

ORBITAL SCIENCES CORPORATION PROPRIETARY DATA; THIS INFORMATION CONTAINS ORBITAL SCIENCES CORPORATION PROPRIETARY DATA AND SHOULD NOT BE RELEASED OR DISCLOSED WITHOUT THE PRIOR EXPRESS WRITTEN APPROVAL OF ORBITAL SCIENCES CORPORATION. THIS DOCUMENT CONTAINS PRIVATE OR PRIVILEGED INFORMATION AND/OR TRADE SECRETS WHICH IS/ARE DISCLOSED IN CONFIDENCE. THIS INFORMATION MAY BE USED, DUPLICATED OR DISCLOSED ONLY TO THE EXTENT AS SPECIFICALLY AUTHORIZED IN WRITING BY ORBITAL SCIENCES CORPORATION.

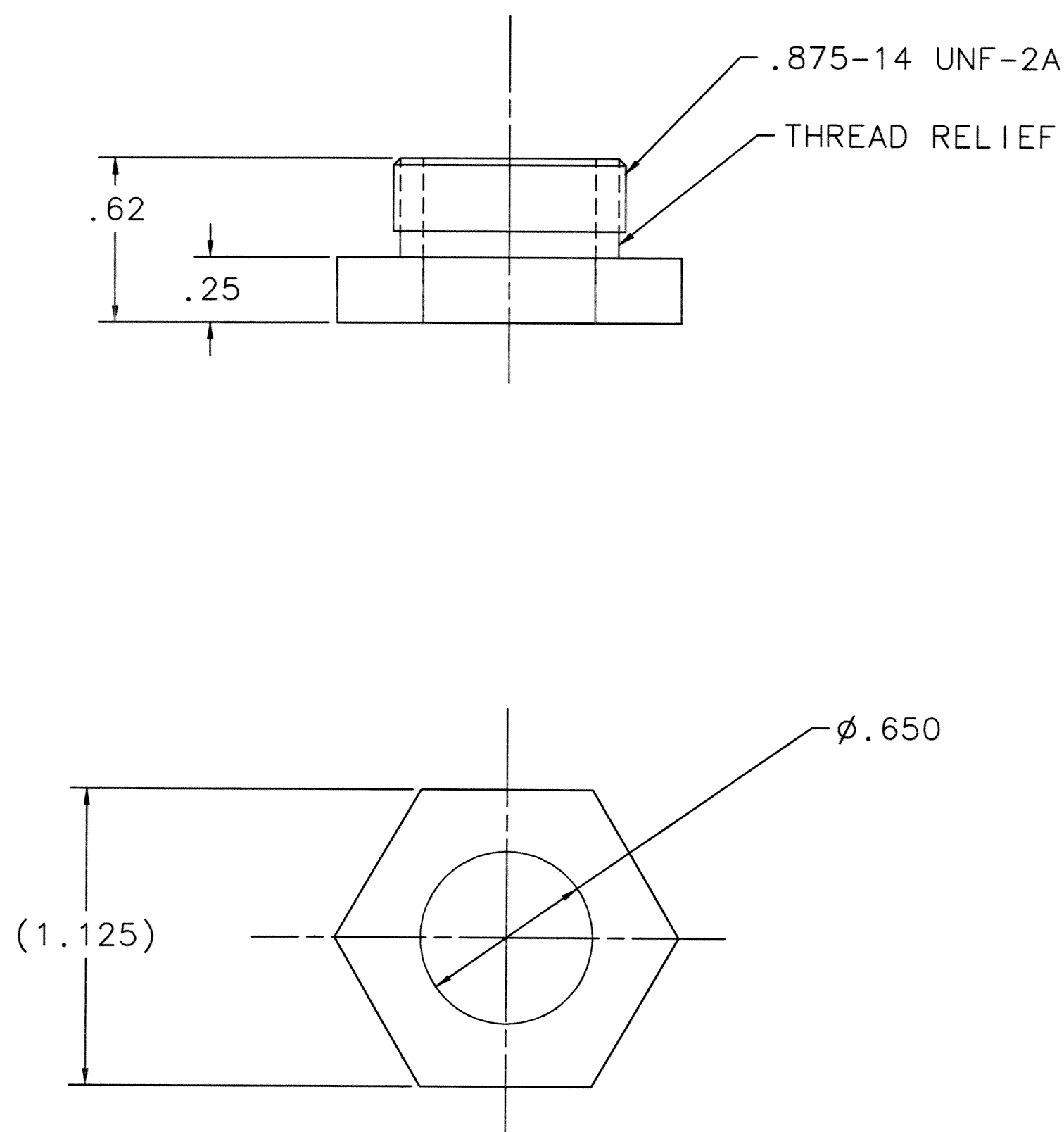
WARNING: INFORMATION SUBJECT TO U.S. EXPORT CONTROL LAWS.
THE ATTACHED DOCUMENTS CONTAIN TECHNICAL DATA WITHIN THE DEFINITION OF THE
INTERNATIONAL TRAFFIC IN ARMS REGULATIONS, AND ARE SUBJECT TO THE EXPORT CONTROL
LAWS OF THE U.S. GOVERNMENT.


REVISION HISTORY

REV	DESCRIPTION	DATE	APPROVED
-	RELEASED PER IR 12318	03-07-30	EB

NOTES:

1. MATERIAL: CRES HEX BAR, TYPE 303, COND A
PER SAE AMS 5640.
2. FINISH: PASSIVATE PER SAE AMS-QQ-P-35, TYPE VIII.
3. BAG AND TAG WITH PART NUMBER.



				-001	FIND NO.	PART OR IDENTIFYING NO.	NOMENCLATURE OR DESCRIPTION				SPECIFICATION		CAGE CODE	NOTE					
QTY REQD PER DASH NO.					PARTS LIST														
					UNLESS OTHERWISE SPECIFIED					CONTRACT NO.		<div><div>Orbital Sciences Corporation Launch Systems Group 3380 South Price Road Chandler, Arizona 85248</div></div>							
					TOLERANCE: ALL HOLE DIA					1. INTERPRET PER ASME Y14.100M. 2. DIMENSIONS ARE IN INCHES. 125/✓ 3. SURFACE TEXTURE SHALL BE 4. DIMENSIONS APPLY AFTER PLATING. 5. REMOVE ALL BURRS AND SHARP EDGES. .005/.015 TOLERANCES ON DECIMAL DIMENSIONS: XXX ±.010 XX ±.02 X ±.1 TOLERANCES ON ANGULAR DIMENSIONS: MACHINED AND LOCATING ±0°30' CHAMFERS ±5° FORMED ±1°		DRAWN		DATE		TITLE PLUG, HOLD DOWN			
					FROM THRU TOL							BOOTHBY		03-07-16					
					0.00 .125 +.004/- .001					CHECKED		DATE		SIZE C 27555		DRAWING NO. 1030-2120		REV -	
					.126 .250 +.005/- .001					E. BROWN		03-07-16							
					.251 .500 +.006/- .001					APPROVED		DATE							
					.501 .750 +.008/- .001					APPROVED		DATE							
-001 1030-1579					.751 1.000 +.010/- .001					APPROVED		DATE		CAGE CODE		DRAWING NO.		REV	
DASH NO. NEXT ASSY					1.001 2.000 +.012/- .001					APPROVED		DATE		27555		1030-2120		-	
APPLICATION					OVER 2.000 +.015/- .005					APPROVED		DATE		SCALE: 2/1		WEIGHT: -		SHEET 1 OF 1	
					TOP ASSEMBLY NO.					J KOKOVITCH		03-07-24							

DWG NO. 1030-2120

SH 1

A