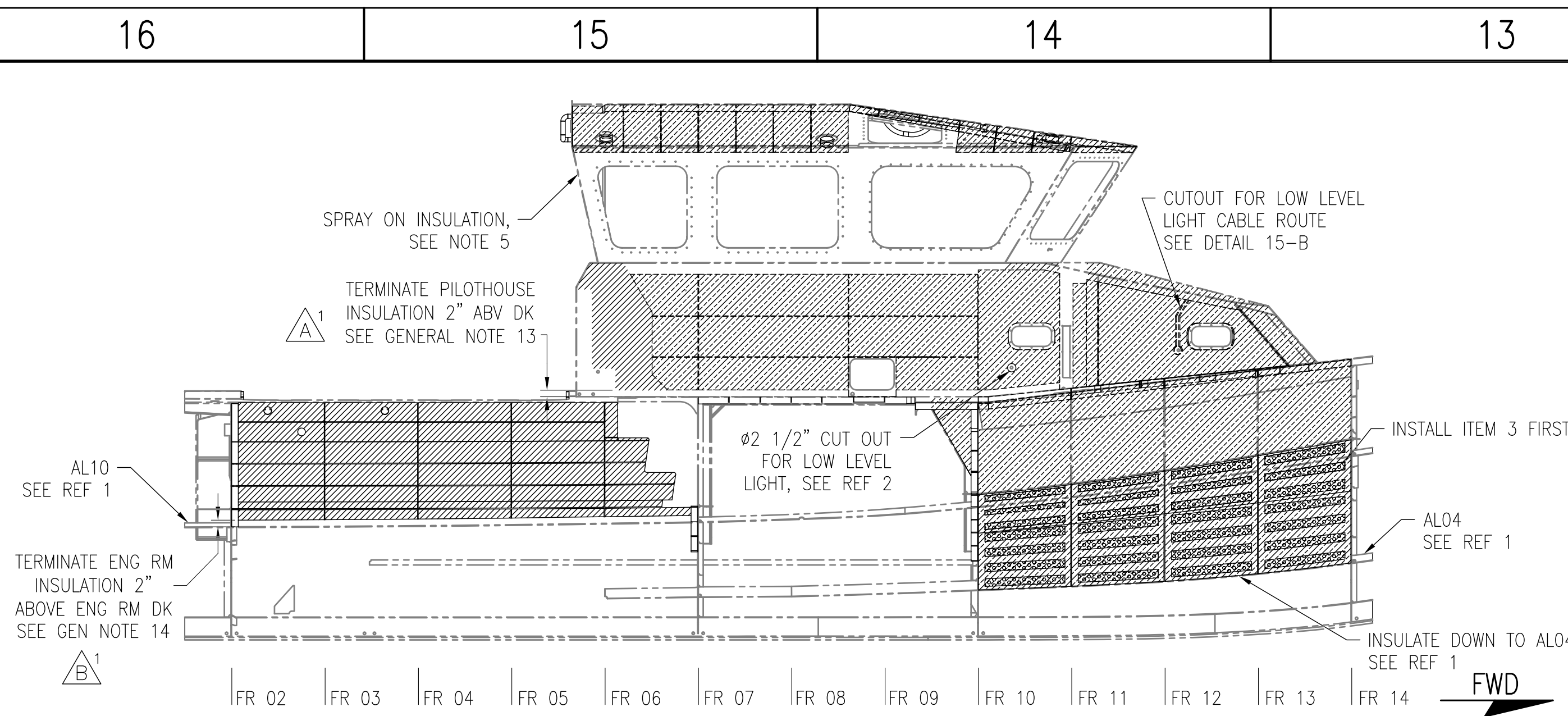
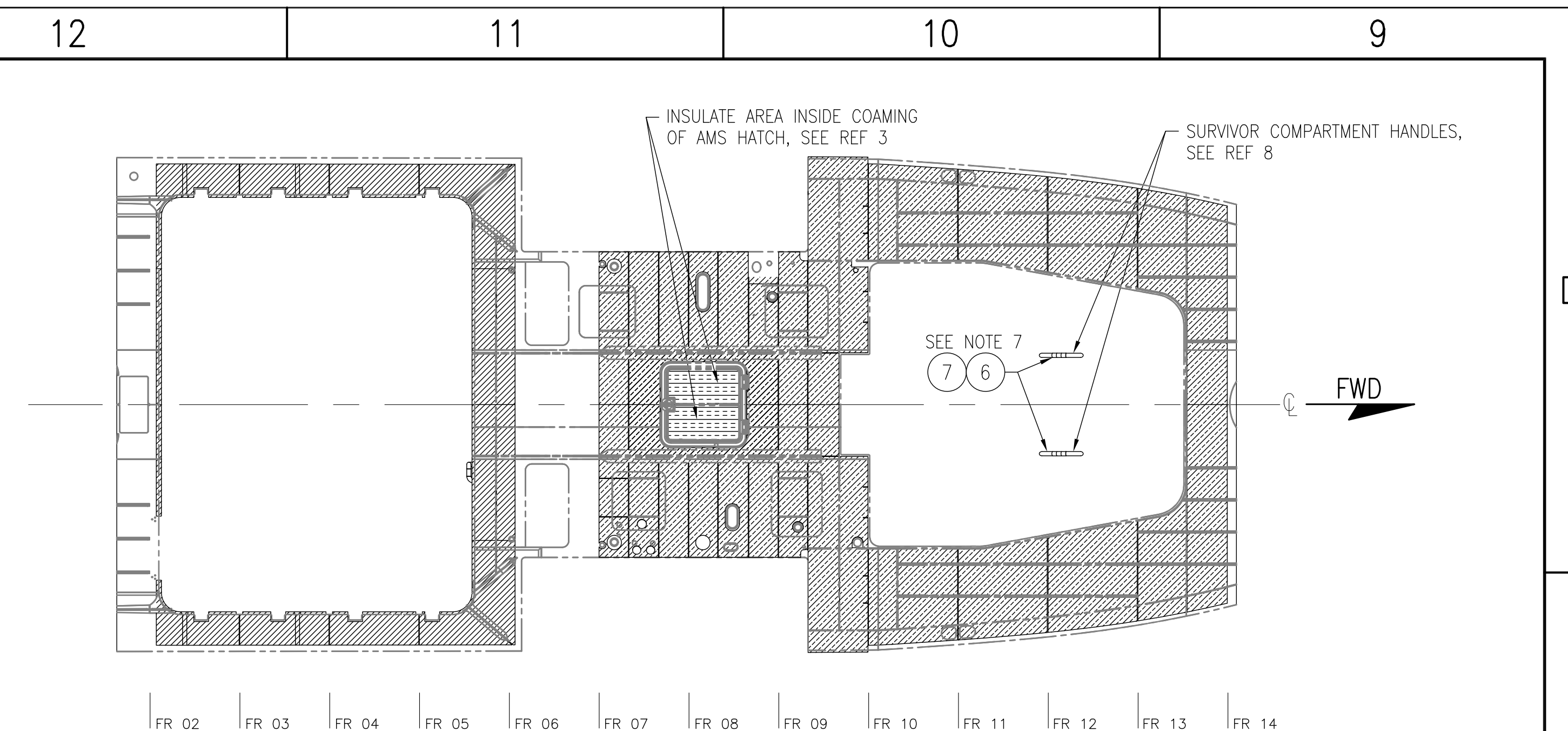


8		7		6		5		4		3		2		1											
MATERIALS LIST						SCHEDULE LEGEND		GENERAL NOTES						REVISIONS											
REV	PC#	QTY	UNIT	MFR PART NO / NSN	DESCRIPTION	MATERIAL			1. 1" CLEARANCE SHALL BE PROVIDED FOR ALL PASS THROUGH PENETRATIONS AND FITTINGS 2. UNLESS OTHERWISE SPECIFIED, ALL DIMENSIONS ARE IN INCHES. 3. HULLBOARD INSULATION IS TO BE INSTALLED WITH ANNULAR WELD STUDS WITH CAP (ITEMS WELD 13, 14, AND 15) UNLESS OTHERWISE NOTED. STUDS ARE TO BE INSTALLED WITH A TYPICAL SPACING NO MORE THAN 18 INCHES AND NO MORE THAN 6 INCHES FROM AN EDGE. 4. ITEM 3, ECODAMP, IS TO COVER AT LEAST 60% OF PANEL 5. SPRAY ON INSULATION IS APPLIED TO PILOTHOUSE AND SURVIVOR COMPARTMENT OVERHEAD IN WAY OF UNINSULATED ALUMINUM SURROUNDING WINDOWS AND ON EXPOSED STIFFENERS. SEE REFERENCE 6. 6. ITEMS 10, 11, AND 12, MATCHING TAPE, IS TO BE APPLIED AS REQUIRED OVER THE EXPOSED FACING JOINT OF ADJOINING BOARDS AND ALL EXPOSED EDGES 7. ITEM 6 IS INSTALLED WITH 1 STRIP OF ITEM 7 ALONG THE HANDGRIP SEAM AND 1 WRAP AT EACH END OF THE HAND GRIP. 8. THE SURVIVOR COMPARTMENT DOOR INSULATION STUDS ITEM 9 ARE GLUED ON USING ITEM 8 AND CAPPED WITH ITEM 14. 9. 2" HULLBOARD WITH FIBERGLASS FACING IS 2 LAYERS OF ITEM 1, SANDWICHING 1 LAYER OF ITEM 18 FACED WITH ITEM 19. 10. 2" HULLBOARD WITH FIBERGLASS FACING IS 1 LAYER OF ITEM 2 FACED WITH ITEM 17. 11. 1" HULLBOARD WITH FIBERGLASS FACING IS 1 LAYER OF ITEM 1 FACED WITH ITEM 17. 12. ALL HULLBOARD FACING SHALL HAVE THE SMOOTH POLYESTER FILM SIDE OF ITEM 17 FACING OUT AND ADHERED TO HULLBOARD USING ITEM 20. 13. BOTTOM OF HULLBOARD INSULATION ON PILOTHOUSE SIDE SHELL SHALL BE 2 INCHES ABOVE DECK TO PREVENT WATER FROM THE DECK WICKING UP INTO THE INSULATION. 14. BOTTOM OF INSULATION IN THE ENGINE ROOM SHALL TERMINATE 2" ABOVE THE ENGINE ROOM DECK TO PREVENT STANDING WATER ON THE DECK FROM WICKING UP INTO THE INSULATION.						REV		SH	ZONE	ITEM	DESCRIPTION		DATE		APPVL SIG & ORG	
D	-	1	AR	SF	204113	INSULATION, HULLBOARD, JOHNS MANVILLE 1" INCOMBUSTIBLE HULLBOARD, FELTED FIBERGLASS, 2.9PCF, 0.23 BTU IN/(HR.FT2.DEGREES F), MIL-1-742F, US COASTGUARD CERTIFICATE OF APPROVAL 164.109/46/0 OR EQUAL		2" HULLBOARD, USING ITEMS 18 & 19 OF MATERIAL LIST, APPROX 233 SF, SEE NOTE 9	A	2	3	16-D 18-A 19-A 20-A 21-B 22-A 23-B	1	THIS REVISION IS IN ACCORDANCE WITH SFLC ACTIVITY 22238, "RBM INSULATION DRAWING 45-RB_M-635_2 REVISION".		06/07/17	E. ALTEMOS/s/ SFLC-ESD- NAME -AMS								
	-	2	AR	SF	204115	INSULATION, HULLBOARD, JOHNS MANVILLE 2" INCOMBUSTIBLE HULLBOARD, FELTED FIBERGLASS, 2.9PCF, 0.23 BTU.IN/(HR.FT2.DEGREES F), MIL-1-742F, US COASTGUARD CERTIFICATE OF APPROVAL 164.109/46/0 OR EQUAL		2" HULLBOARD WITH FIBERGLASS FACING, APPROX 526 SF SEE NOTE 10						RAISED BOTTOM OF HULLBOARD INSULATION IN PILOTHOUSE TO 2" ABOVE DECK TO PREVENT WATER ON THE DECK FROM WICKING UP INTO THE INSULATION.											
	-	3	116	SF	204116	INSULATION KIT, SELF-ADHESIVE FOIL CONSTRAINED LAYER DAMPER, .063" SOUNDOWN ECODAMP DCDS062, SIZE PER SHEET 14" X 28"		1" HULLBOARD WITH FIBERGLASS FACING, APPROX 26 SF, SEE NOTE 11						ADDED GENERAL NOTE 13.											
	-	4	17	SF	205330	PERFORATED PLATE, 3003-H14, .063, .125 HOLE SIZE, .188 HOLE CENTER, STAGGERED, 48.000 W x 120.000 L, MCNICHOLS #1718316341 OR EQUAL		CONSTRAINED LAYER DAMPER, APPROX 116 SF, ITEM 3						J. ROBINSON											
	-	5	19	FT	205836	TRIM MOULDING, PLASTIC, .547-L x .160, TACO MARINE V30-1005B25-1		PERFORATED PLATE, ITEM 4						THIS REVISION IS IN ACCORDANCE WITH SFLC ACTIVITY 26165, "RBM INSULATION DRAWING 45-RB_M-635_2 REVISION", TO ADDRESS ISSUE OF STANDING WATER WICKING UP INTO INSULATION IN ENGINE ROOM.											
C	-	6	6	EA	210546	TAPE, GRIP, 4.250 x 10 FT, GRIPLINK, RIVER ROCK GRAY, STANDARD RAILING SIZE			B	2	3	16-C 20-D 23-B	1	RAISED THE INSULATION ALONG THE ENGINE ROOM BHD AND SHELL TO 2" ABOVE THE ENGINE ROOM DECK TO PREVENT STANDING WATER FROM WICKING UP INTO INSULATION.		02/23/18	E. ALTEMOS/s/ SFLC-ESD- NAME -AMS								
	-	7	AR	RL	210836	TAPE, VINYL, GREY, .750 WIDTH x 66 FT, 3M SCOTCH 35, ELECTRICAL, ROLL								ADDED GENERAL NOTE 14.											
	-	8	AR	GL	211547	ADHESIVE, INSULATION HANGER, 1 GAL, MEI ECO-HANGER GRIP 22-15, 800-1000 HANGERS/GAL								J. ROBINSON											
	-	9	16	EA	211548	INSULATION HANGER, ANNULAR RING STUD, 5356, .181 ND x 1.000 LENGTH, PERFORATED BASE, ADHESIVE MOUNT, AGM INDUSTRIES ALT 177-0875, 2.000 x 2.000 3003 ALUM BASE, NAVY STANDARD								THIS REVISION WAS MADE IN ACCORDANCE WITH SFLC ACTIVITY 36875.											
	-	10	AR	EA	212040	INSULATION, TAPE, 2" WIDE, ALPHA ASSOCIATES INC 59M-PS-2-WHITE, 100% FIBERGLASS SCRIM AND POLYESTER FILM OR EQUAL								07/22/2020											
	-	11	AR	EA	212041	INSULATION, TAPE, 3" WIDE, ALPHA ASSOCIATES INC 59M-PS-3-WHITE, 100% FIBERGLASS SCRIM AND POLYESTER FILM OR EQUAL								W.H CLOONAN /S/ SFLC-SBPL											
	-	12	AR	EA	212042	INSULATION, TAPE, 4" WIDE, ALPHA ASSOCIATES INC 59M-PS-4-WHITE, 100% FIBERGLASS SCRIM AND POLYESTER FILM OR EQUAL								REVISED PART NUMBERS 18 & 19 UNDER MATERIALS LIST.											
	-	13	AR	EA	212043	ANNULAR RING NAVY STUD, ALUMINUM, 1.875" LONG X 0.180" DIA, AGM INDUSTRIES INC ALNS-1875 OR EQUAL								REVISED TEXT OF FIRST ITEM UNDER SCHEDULE LEGEND.											
	-	14	AR	EA	212044	ANNULAR RING DRIVE ON CAP, ALUMINUM, .500" LONG X 0.906" DIA, AGM INDUSTRIES INC ALNC-180 OR EQUAL								REVISED ITEM NUMBER 9 UNDER GENERAL NOTES.											
	-	15	AR	EA	212055	ANNULAR RING NAVY STUD, ALUMINUM, .875" LONG X 0.180" DIA, AGM INDUSTRIES INC ALNS-0875 OR EQUAL								BY: J.B WOODLEY											
B	-	16	AR	EA	212056	INSULATION, TAPE, 3" WIDE, VENTURE TAPE CORPORATION 1525CW, FSK INSULATION TAPE OR EQUAL																			
	-	17	AR	EA	212057	INSULATION, FACING, 100% FIBERGLASS SCRIM AND POLYESTER FILM, ALPHA ASSOCIATES INC ALPHA STYLE 59-M WHITE FR, US COASTGUARD CERTIFICATE OF APPROVAL 164.012/73/0 OR EQUAL																			
	C	18	233	SF	17763007	PYROTEK "QUADZERO"																			
A	C	19	233	SF	-	HULLBOARD: OWENS CORNING 2" FOIL-FACED "INSUL-QUICK" INSULATION																			
	-	20	1	AR	222437	ADHESIVE, LATEX, 1 GAL, VIMASCO CORPORATION 727																			
NOTE: LONGITUDINAL CENTER OF GRAVITY (LCG) - THE REFERENCE POINT IS THE FORWARD PERPENDICULAR FOR VESSELS 120' AND GREATER IN LENGTH. FOR VESSELS AND STANDARD BOATS LESS THAN 120', IDENTIFY THE REFERENCE POINT USED.						SECTIONS & DETAILS		APPLICABILITY		STINFO DESIGNATION															
WEIGHT CONTROL						SHEET REVISION STATUS AND TITLE INDEX		APPLICABILITY		45-RB-M															
WT (LBS)		VCG REF BL		LCG (SEE NOTE)		F/A		TCG REF CL		P/S		45-RB-M		ALL											
NOT USED												45-RB-M		HULLS											
												45-RB-M		HULLS											
												45-RB-M		HULLS											
												45-RB-M		HULLS											
												45-RB-M		HULLS											
												45-RB-M		HULLS											
												45-RB-M		HULLS											
												45-RB-M		HULLS											
												45-RB-M		HULLS											
												45-RB-M		HULLS											
												45-RB-M		HULLS											
												45-RB-M		HULLS											
												45-RB-M		HULLS											
												45-RB-M		HULLS											
												45-RB-M		HULLS											
												45-RB-M		HULLS											
												45-RB-M		HULLS											
												45-RB-M		HULLS											
												45-RB-M		HULLS											
												45-RB-M		HULLS											
												45-RB-M		HULLS											
												45-RB-M		HULLS											
												45-RB-M		HULLS											
												45-RB-M		HULLS											
												45-RB-M		HULLS											
												45-RB-M		HULLS											
												45-RB-M		HULLS											
												45-RB-M		HULLS											
												45-RB-M		HULLS											
												45-RB-M		HULLS											
												45-RB-M		HULLS											
												45-RB-M		HULLS											
												45-RB-M		HULLS											
												45-RB-M		HULLS											
												45-RB-M		HULLS											
												45-RB-M		HULLS											
												45-RB-M		HULLS											
												45-RB-M		HULLS											
												45-RB-M		HULLS											
												45-RB-M		HULLS											
												45-RB-M		HULLS											
												45-RB-M		HULLS											
												45-RB-M		HULLS											
												45-RB-M		HULLS											
												45-RB-M		HULLS											
												45-RB-M		HULLS											
												45-RB-M		HULLS											
												45-RB-M		HULLS											
												45-RB-M		HULLS											
												45-RB-M		HULLS											
												45-RB-M		HULLS											
												45-RB-M		HULLS											
												45-RB-M		HULLS											
												45-RB-M		HULLS											
												45-RB-M		HULLS											
												45-RB-M		HULLS											
												45-RB-M		HULLS											
												45-RB-M		HULLS											
												45-RB-M		HULLS											
												45-RB-M		HULLS											
												45-RB-M		HULLS											



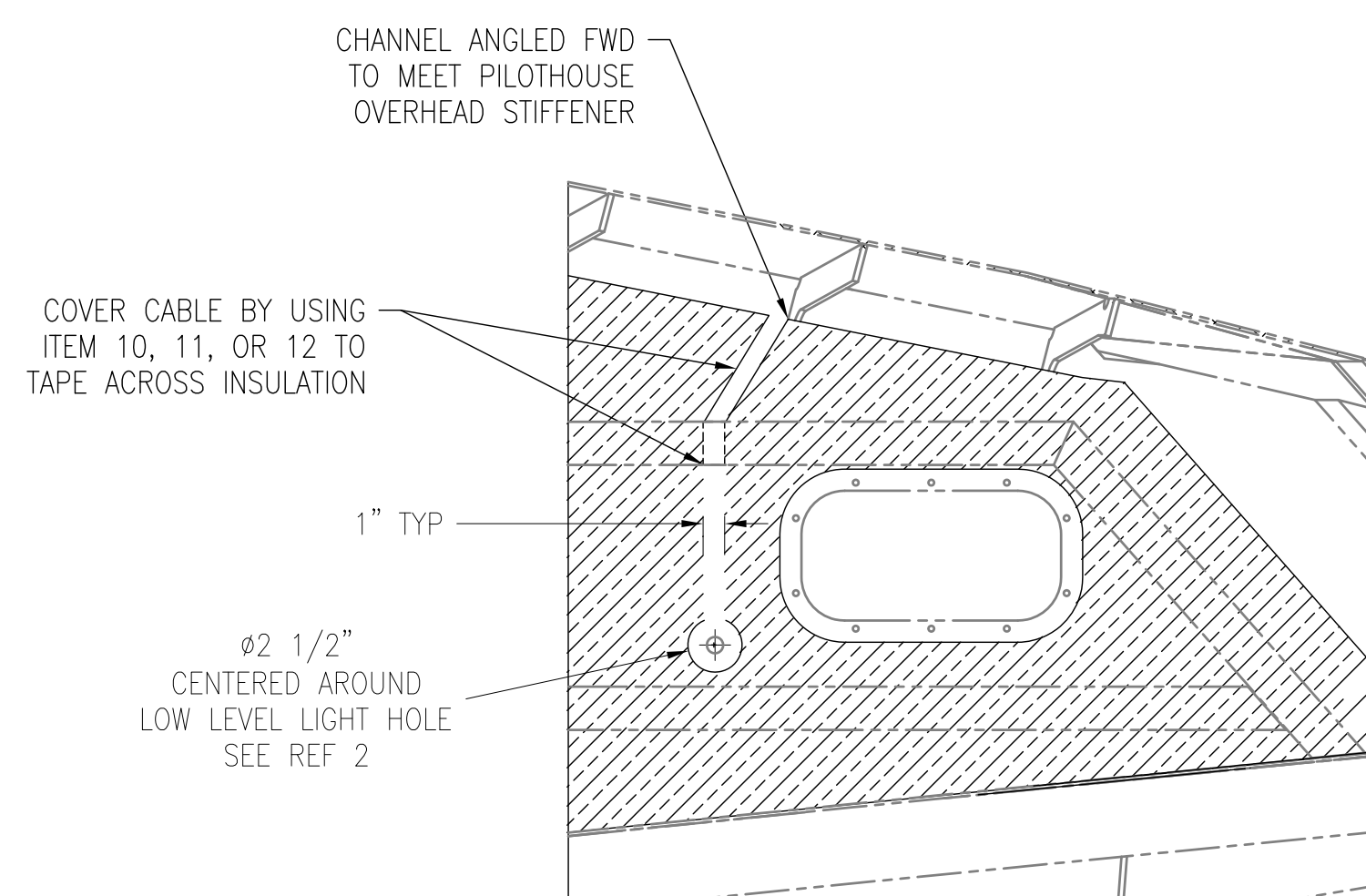
ELEVATION VIEW 14-C $\triangle A' \triangle B'$

STBD LKG PORT
PORT SIDE SIM
SCALE: 3/8"= 1'-0"



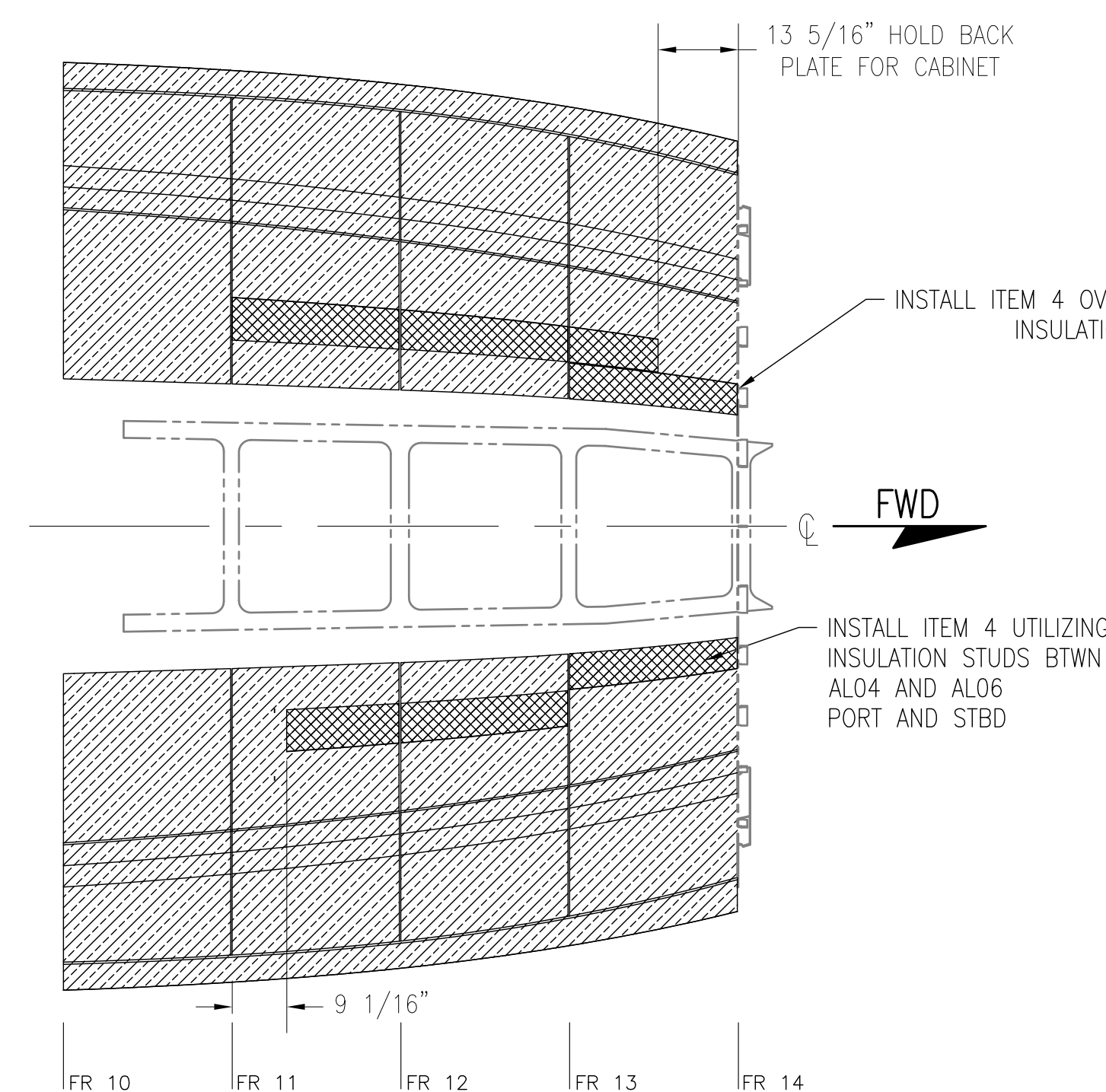
PLAN VIEW 11-C

LKG UP AT DECK
SCALE: 3/8"= 1'-0"



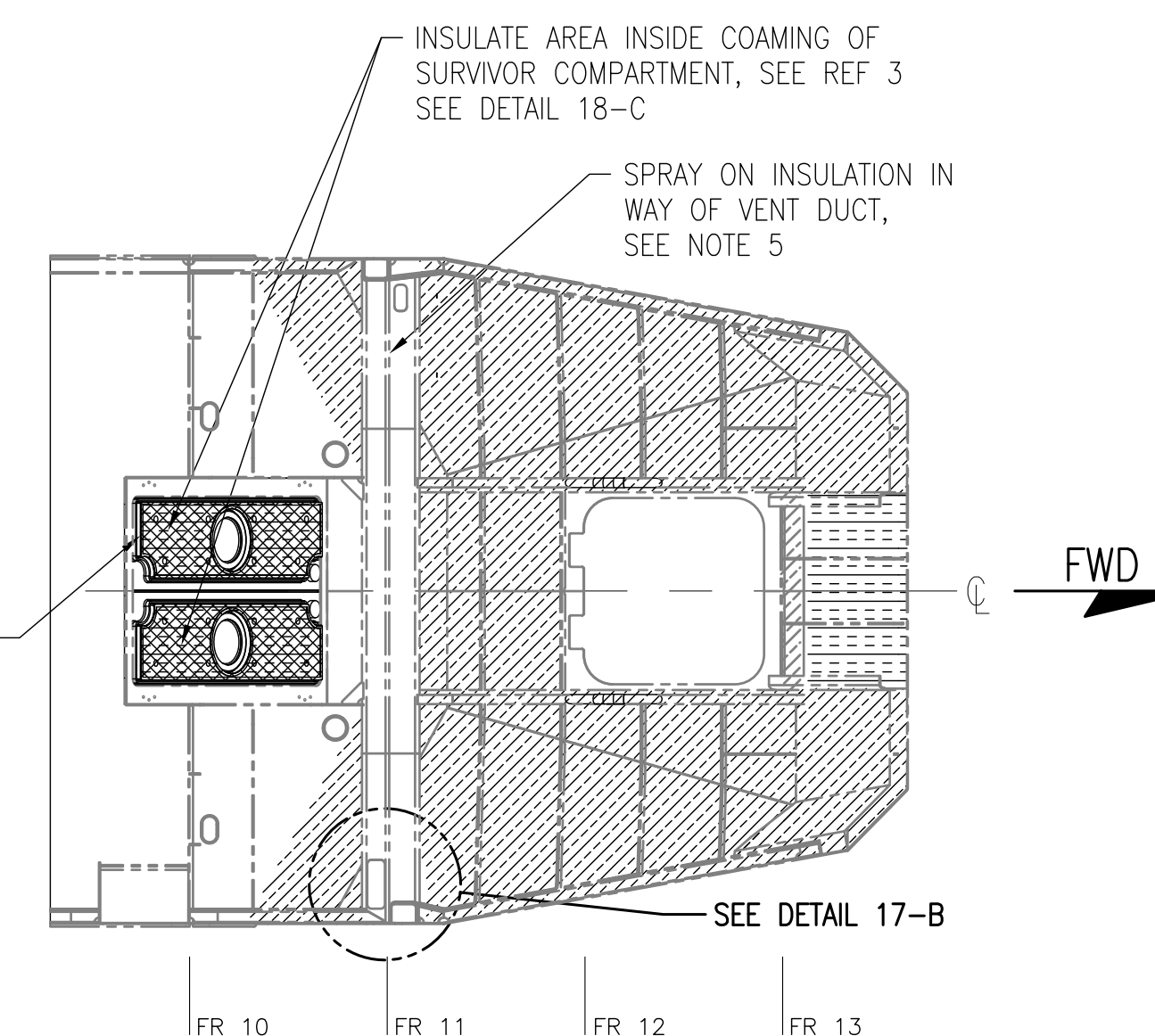
DETAIL 15-B

PORT SIDE SHOWN
STBD SIDE SIMILAR
SCALE: 1 1/2"= 1'-0"
(14-C)



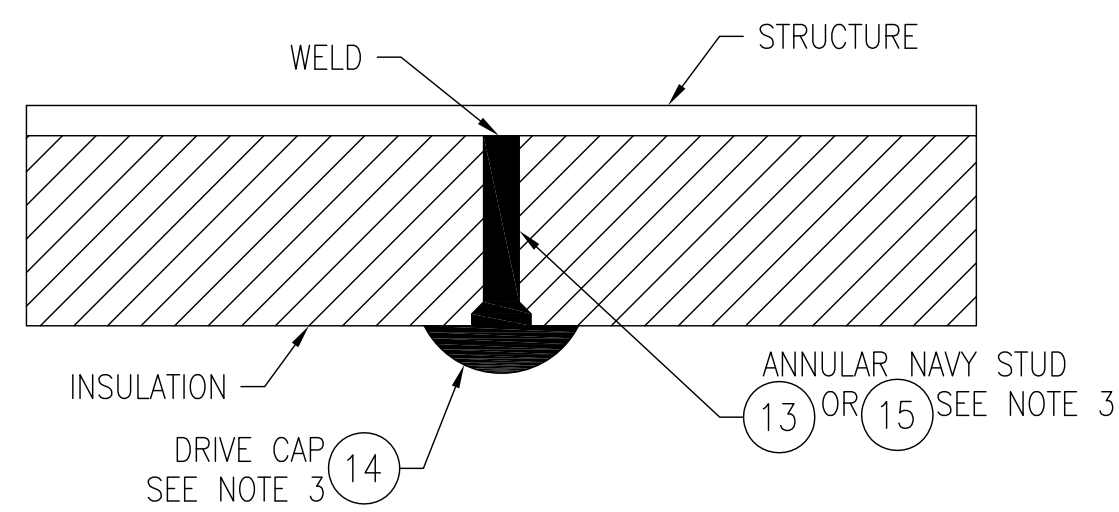
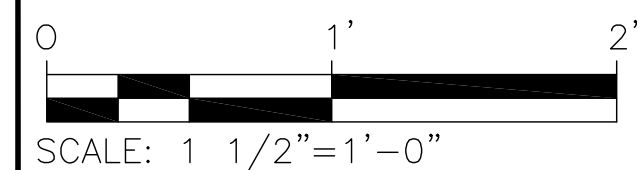
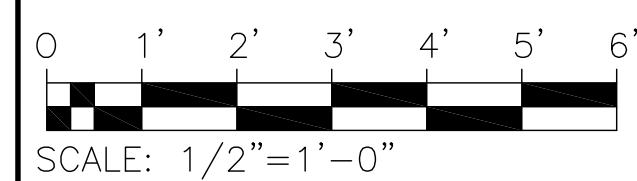
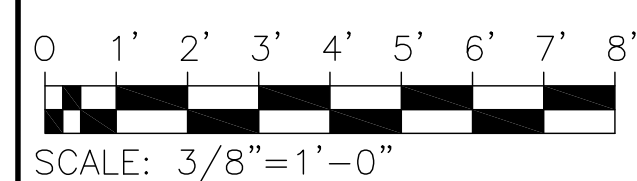
PLAN VIEW 13-A

LKG DOWN AT SURVIVOR
COMPARTMENT
SCALE: 1/2"= 1'-0"



PLAN VIEW 11-A

LKG UP AT SURVIVOR
COMPARTMENT COACH ROOF
AND COMPANIONWAY DOOR
SCALE: 1/2"= 1'-0"



DETAIL 15-A

TYPICAL INSTALLATION OF STUD AND CAP
INCL WITH ITEMS 1-3. WELD STUDS TO SHELL USING
CAPACITOR DISCHARGE STUD WELDING TECHNIQUE IN
ACCORDANCE WITH AWS D1.2/D1.2M:2003
NOT TO SCALE

UNITED STATES COAST GUARD		WASHINGTON, D.C. 20593	
OFFICE OF NAVAL ENGINEERING			
45FT		RB-M	
INSULATION DETAILS			
PLAN & ELEVATION VIEWS			
SIZE D	FSCM CAGE NO. 81340	U.S.C.G. DRAWING NO. 45-RB-M-635-002	REV B
SCALE: AS NOTED		6.00 SQ FT	SHEET 2

