



MISSOURI RIVER, GLASGOW PROJECT OFFICE

FY22 GLASGOW MAINTENANCE BUILDING PROJECT

INDEX	
<u>SHEET NO.</u>	<u>TITLE</u>
	<u>LOCATION</u>
G-002	CULVERT LOCATIONS MAP
	<u>EXISTING CONDITIONS</u>
G-003	EXISTING EXTERIOR CONDITION - PHOTOS
G-004	EXISTING INTERIOR CONDITION - PHOTOS
G-005	EXISTING DAMAGE - PHOTOS
G-006	EXISTING UTILITIES - PHOTOS
	<u>CIVIL</u>
CS-100	BUILDING DIMENSIONS

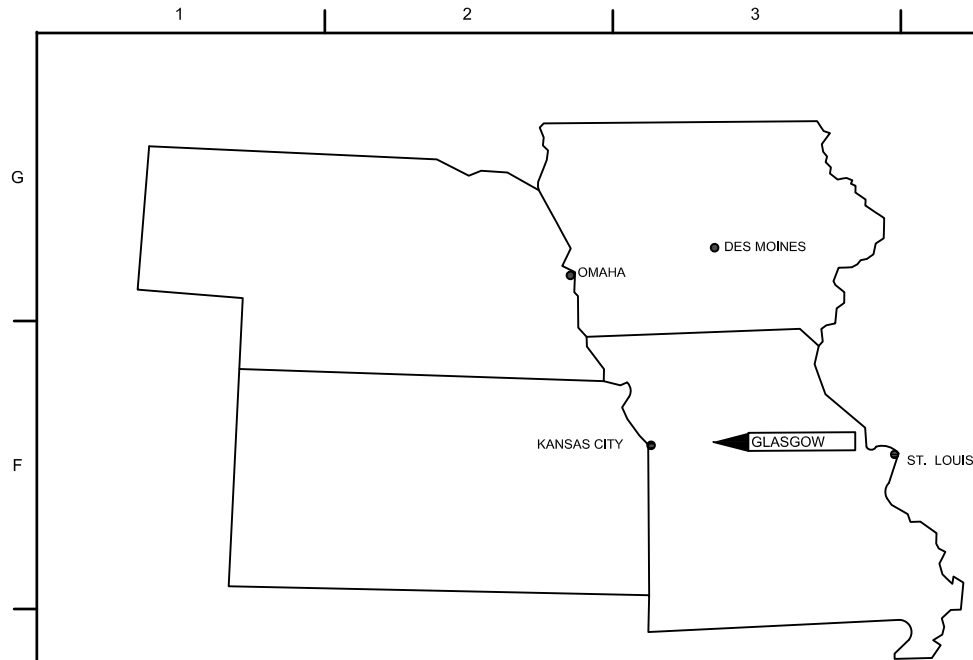
**US Army Corps
of Engineers®**

[illegible]

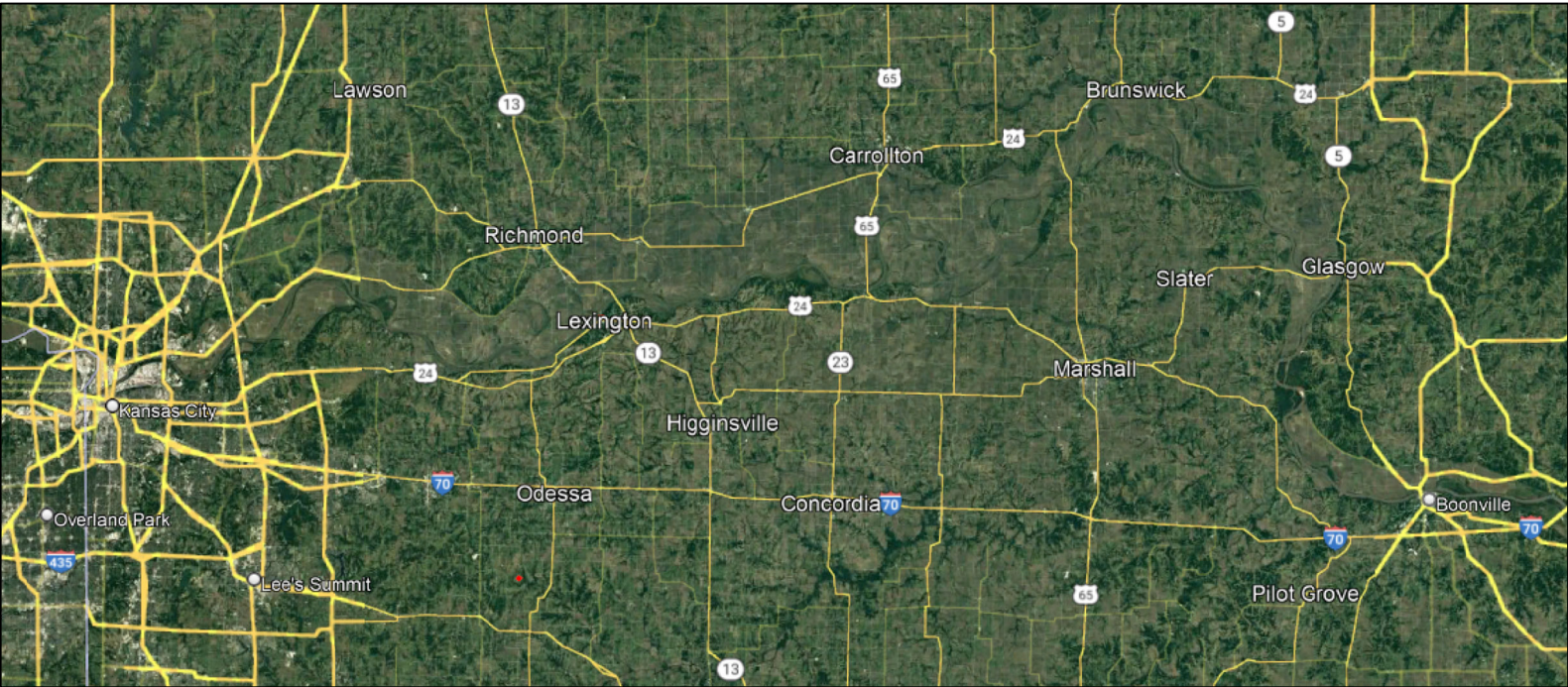
U.S. ARMY CORPS OF ENGINEERS KANSAS DISTRICT 1000 EAST 12TH AVENUE KANSAS CITY, MO 64106	DESIGNED BY:	15 SEP 2022		
	DRAWN BY:	SOLICITATION NO.:		
	LILES	W91DQ22D10055		
	CHECKED BY:	CONTRACT NO.:		
		W53357-24-1324X		
	SUBMITTED BY:			
	SIZE:	11X17		

MISSOURI RIVER, GLASGOW PROJECT OFFICE
FY22 GLASGOW MAINTENANCE BUILDING PROJECT
GLASGOW, MISSOURI

SHEET ID
G-001

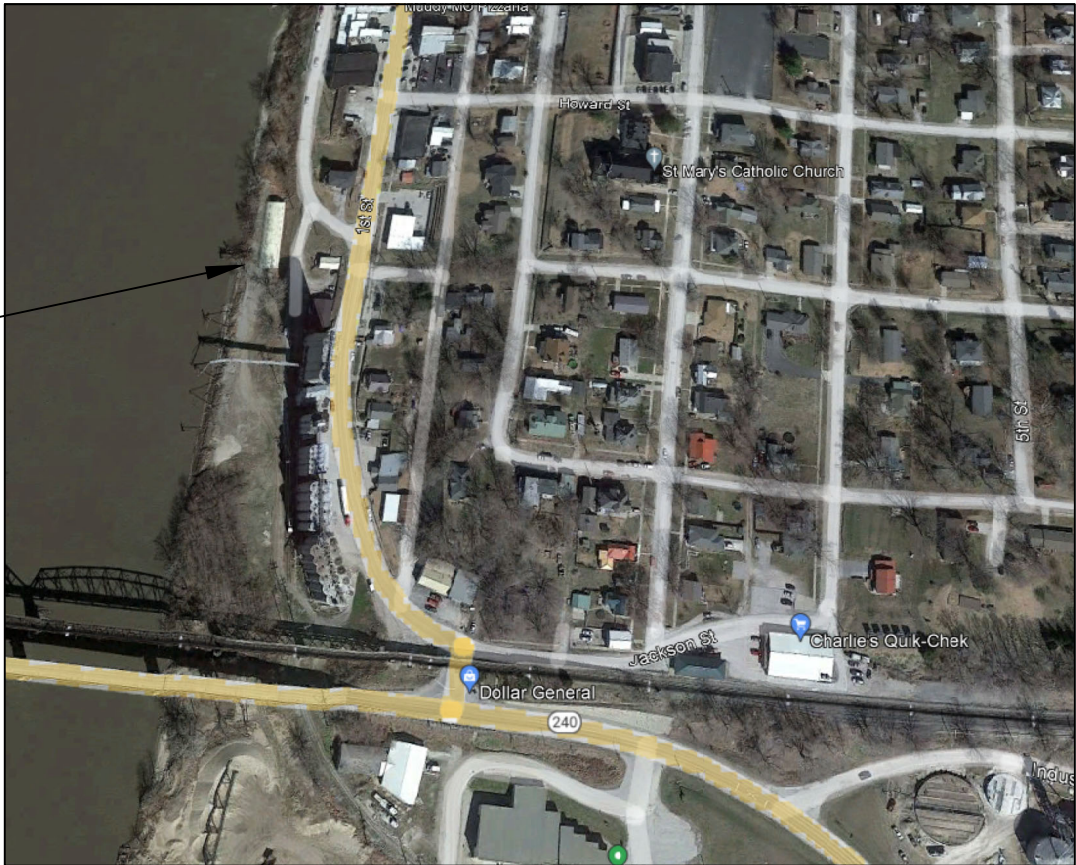


E1 REGIONAL MAP



D7 PROJECT VICINITY MAP

PROJECT LOCATION



A4 AREA MAP



US Army Corps
of Engineers®

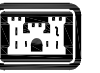
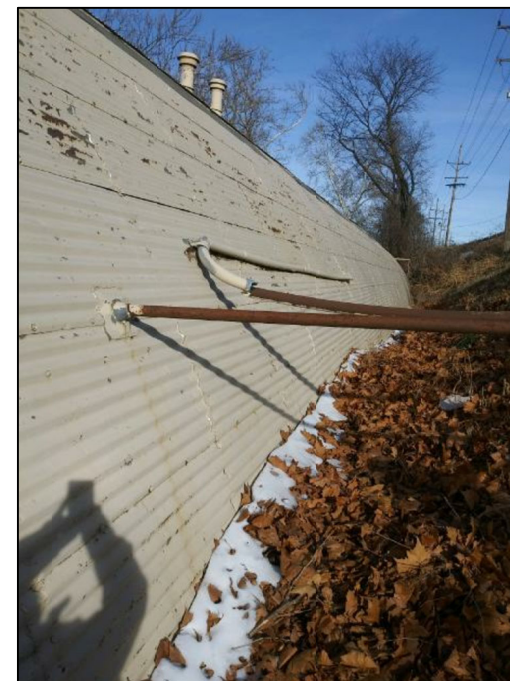
MARK	DATE
0	MAR 2022
INITIAL PROJECT DEVELOPMENT	DESCRIPTION

DESIGNED BY: JULIE TURK	ISSUE DATE: 15 SEPTEMBER 2022
CHECKED BY: JULIE TURK	SOLIDATION NO.: SEE TITLE PAGE
SUBMITTED BY:	CONTRACT NO.: SEE TITLE PAGE
SIZE: 11"x17"	

U.S. ARMY CORPS OF ENGINEERS KANSAS CITY DISTRICT 601 E 12th St. Kansas City, MO 64106	
---	--

GLASGOW FIELD OFFICE MISSOURI RIVER GLASGOW SHOP BUILDING REPAIR PROJECT LOCATION MAP GLASGOW, MISSOURI
--

SHEET ID G-002



US Army Corps
of Engineers®

[illegible]

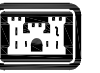
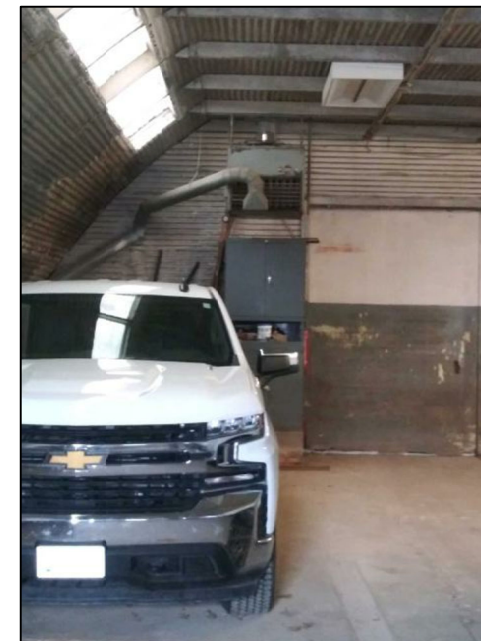
DESIGNED BY:	ISSUE DATE:
DRAWN BY:	15 SEPTEMBER 2022
LILLES	SOLICITATION NO.:
CHECKED BY:	SEE TITLE PAGE
TURK	CONTRACT NO.:
SUBMITTED BY:	SEE TITLE PAGE
SIZE:	
11"x17"	

U.S. ARMY CORPS OF ENGINEERS
KANSAS CITY DISTRICT
601 E 12th St.,
Kansas City, MO 64106

GLASGOW FIELD OFFICE MISSOURI RIVER
GLASGOW SHOP BUILDING REPAIR PROJECT
BUILDING EXTERIOR
GLASGOW, MISSOURI

SHEET ID

G-003

[illegible]

DESIGNED BY:	ISSUE DATE:
PUGH	15 SEPTEMBER 2022
DRAWN BY:	SOLICITATION NO.:
LILLES	SEE TITLE PAGE
CHECKED BY:	CONTRACT NO.:
TURK	SEE TITLE PAGE
SUBMITTED BY:	
SIZE:	
11"x17"	

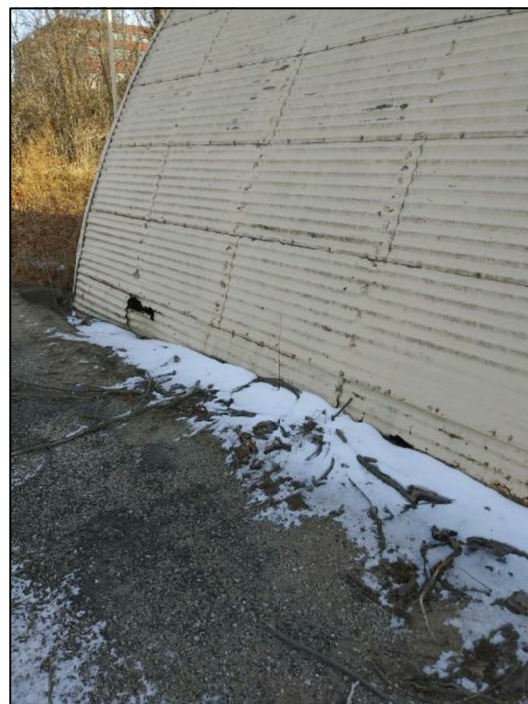
U.S. ARMY CORPS OF ENGINEERS
KANSAS CITY DISTRICT
801 E 12th St.
Kansas City, MO 64106

GLASGOW FIELD OFFICE, MISSOURI RIVER
GLASGOW SHOP BUILDING REPAIR PROJECT
BUILDING INTERIOR
GLASGOW, MISSOURI

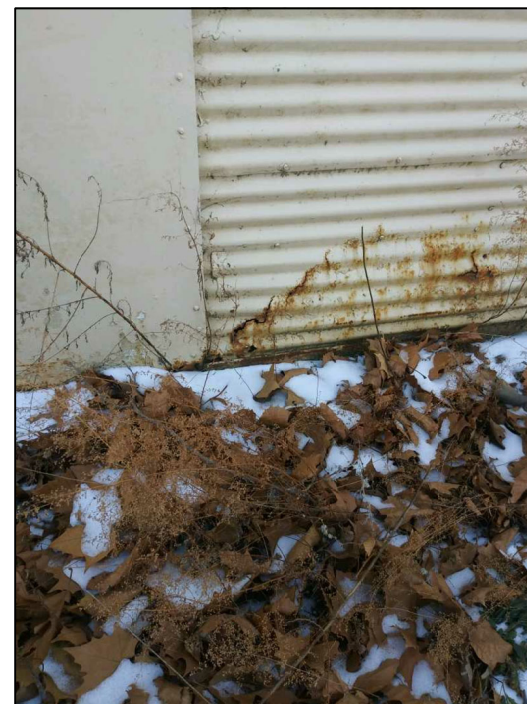
SHEET ID
G-004



D1 NORTH SIDE - BACK



D4 EXISTING INTERNAL SKYLIGHT



D7 NORTH SIDE - DOOR



A3 SOUTH SIDE - CEILING



A6 INTERMEDIATE WALL



**US Army Corps
of Engineers®**

[illegible]

DESIGNED BY: PUGH	ISSUE DATE: 15 SEPTEMBER 2022
DRAWN BY: LILES	SOLICITATION NO.: SEE TITLE PAGE
CHECKED BY: TURK	CONTRACT NO.: SEE TITLE PAGE
SUBMITTED BY:	
SIZE:	

U.S. ARMY CORPS OF ENGINEERS
KANSAS CITY DISTRICT
601 E 12th St.,
Kansas City, MO 64106

GLASGOW FIELD OFFICE MISSOURI RIVER
GLASGOW SHOP BUILDING REPAIR PROJECT
BUILDING INTERIOR
GLASGOW, MISSOURI

SHEET ID

G-005



D4



A3

A6



