

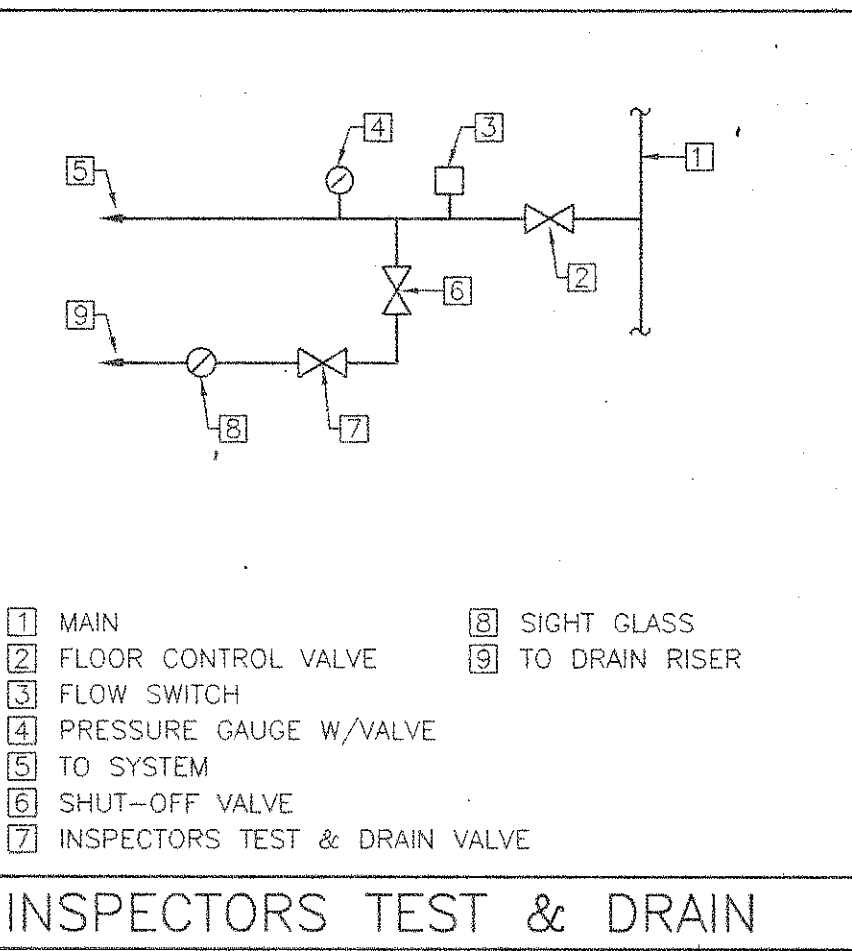
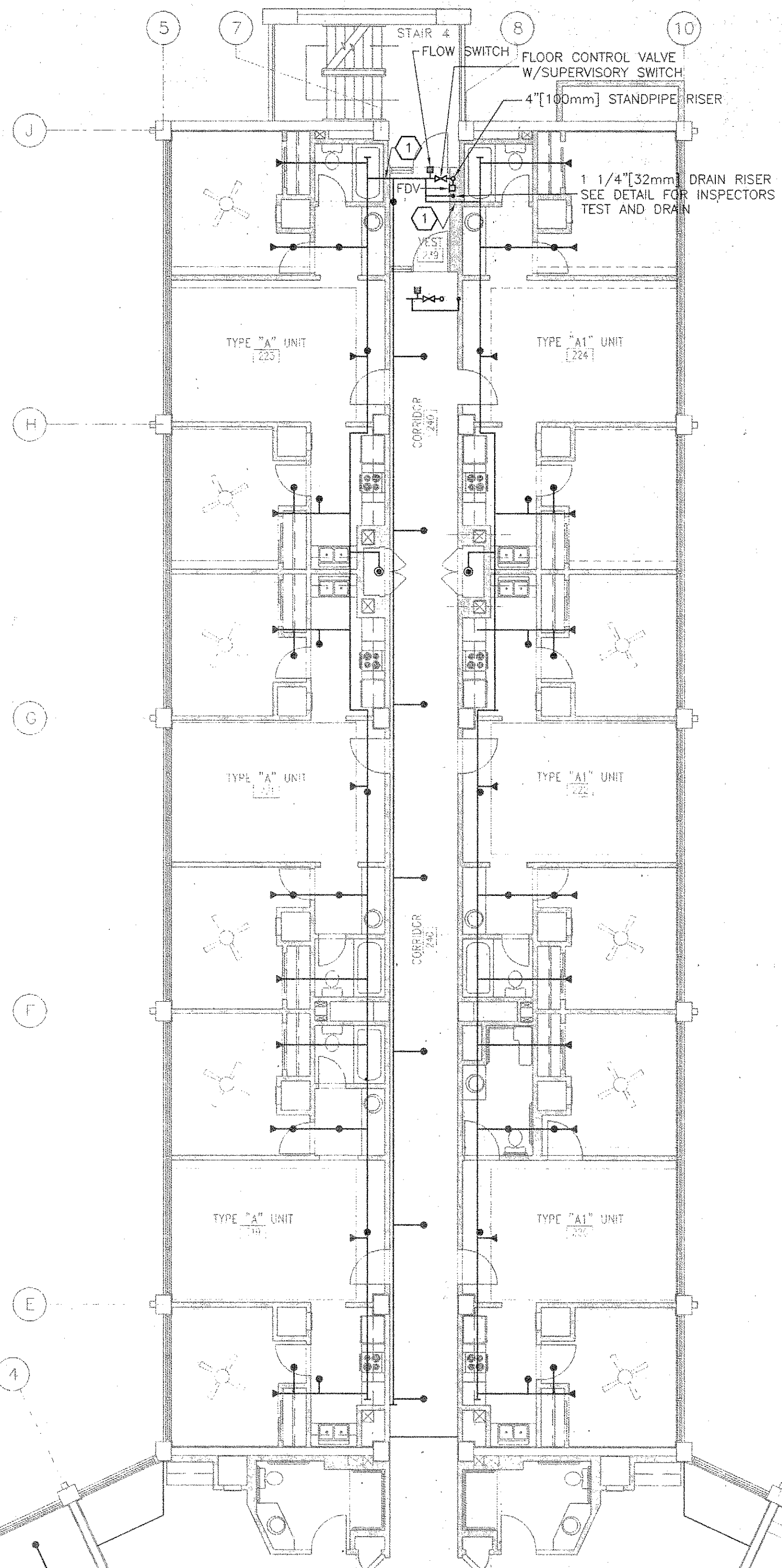
SPECIFIC NOTES
① PROVIDE CORED HOLE THRU CONCRETE BEAM ABOVE NEW CEILING.

FIRE PROTECTION
FIRST FLOOR PLAN
SCALE : 1/8" = 1'-0" [1.0cm = 0.98m]

GVA ENGINEERING, L.L.C.
PROJECT No. 9948

FP2

REVISION	DATE	DESIGN	APPROVED
UNITED STATES AIR FORCE		AIR EDUCATION AND TRAINING COMMAND	
KEESLER AIR FORCE BASE			
BLOOMING, MISSISSIPPI			
OFFICE OF CIVIL ENGINEERS			
REPAIR VAQ TYER HOUSE			
FIRST FLOOR PLAN			
FIRE PROTECTION			
SUBMITTED (Chief of Contracts Design)	RECOMMENDED (Chief of Engineering)	APPROVED (Deputy Civil Engineer)	
CLARENCE H. VAUGHN, P.E.	ROBERT C. SHRYVER, P.E.	WILLIAM J. POND, P.E.	
DESIGNED OJF	CHECKED OJF	SCALE AS NOTED	
DRAWN GYT	DATE 12-MAY-00	PROJECT NUMBER MAHQ 01-1000	SHEET 10 OF 10



SPECIFIC NOTE:
① PROVIDE CORED HOLE THRU CONCRETE BEAM ABOVE NEW CEILING.

**FIRE PROTECTION
TYPICAL PLAN FLOORS 2-5**
SCALE : 1/8" = 1'-0" [3.2mm = 0.30m]

REVISION	DATE		DRAWN	APPROVED	
UNITED STATES AIR FORCE			AIR EDUCATION AND TRAINING COMMAND		
BLOWN			MISSISSIPPI		
OFFICE OF CIVIL ENGINEERS					
KEESLER AIR FORCE BASE					
REPAIR VAQ TYER HOUSE					
TYPICAL PLAN FLOOR 2-5					
FIRE PROTECTION					
SUBMITTED: (Chief of Contracts Design)		RECOMMENDED: (Chief of Engineering)		APPROVED: (Deputy Civil Engineer)	
CLARENCE H. VAUGHN, P.E.		ROBERT C. SHYRLI, P.E.		WILLIAM J. POKR, P.E.	
DESIGNED:		CHECKED:		DRAWING NUMBER:	
OJF		OJF		AS NOTED	
DATE:		DATE:		PROJECT NUMBER:	
GVT		12 MAY 00		MAHG 01-1000	
				SHEET: _____ OF _____	

GVA ENGINEERING, L.L.C.
PROJECT No. 9948

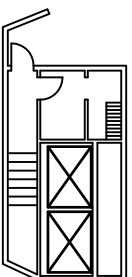
FP3

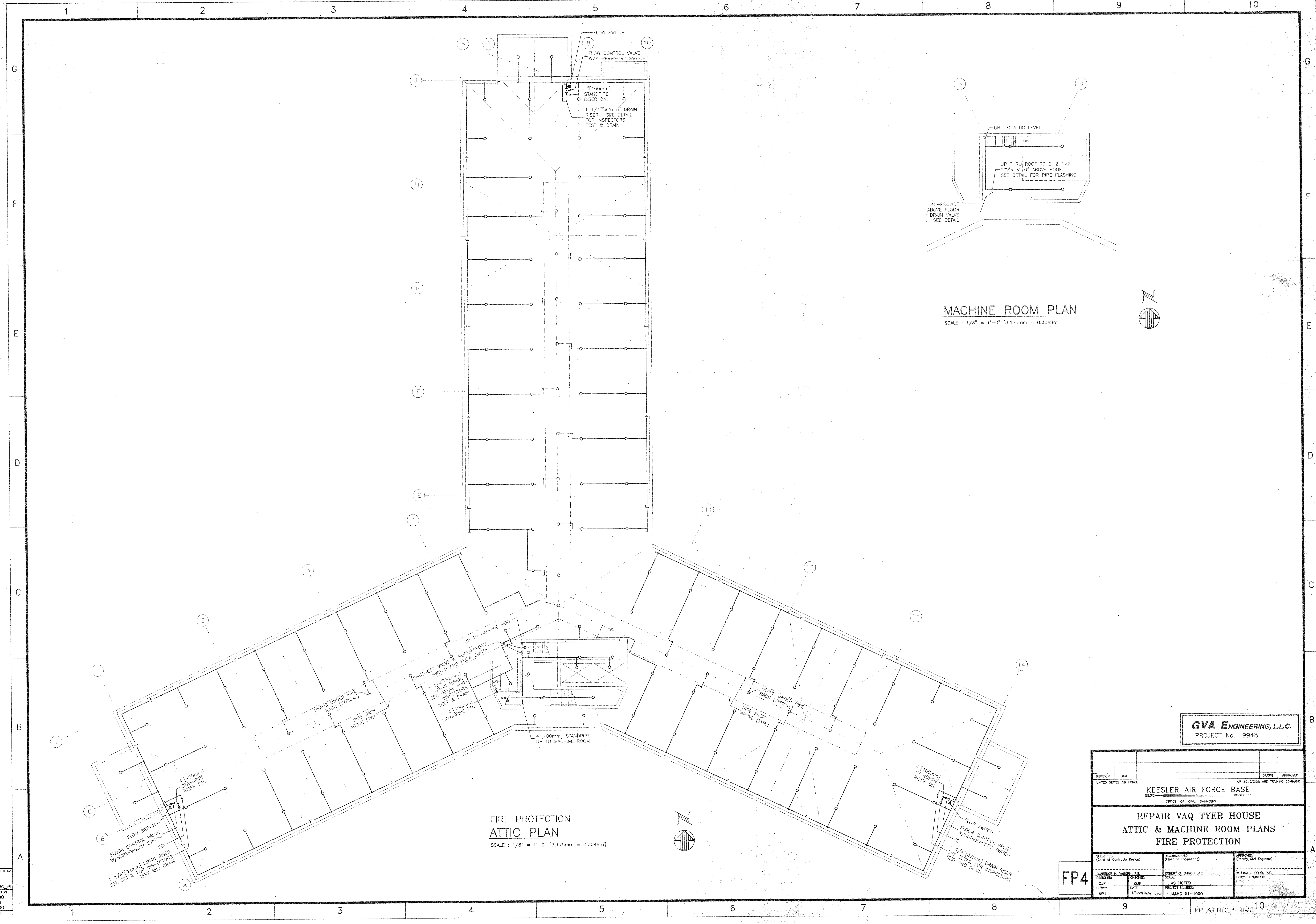
DVA PROJECT NO. 9948
CADD FILE: FP_2-5
LAST REVISION: 5-10-00
PLOT DATE: 5-10-00
PLOT SCALE: 1"=1'

T:\JOBS\9948\DWGNOTES\FP_2-5_FLDWG
May 9, 2000

T:\COURT\9948\FP_2-5.dwg
10:05:43:02 2000
GVT

BLDG. 0470 - 6TH FLOOR
NOT TO SCALE





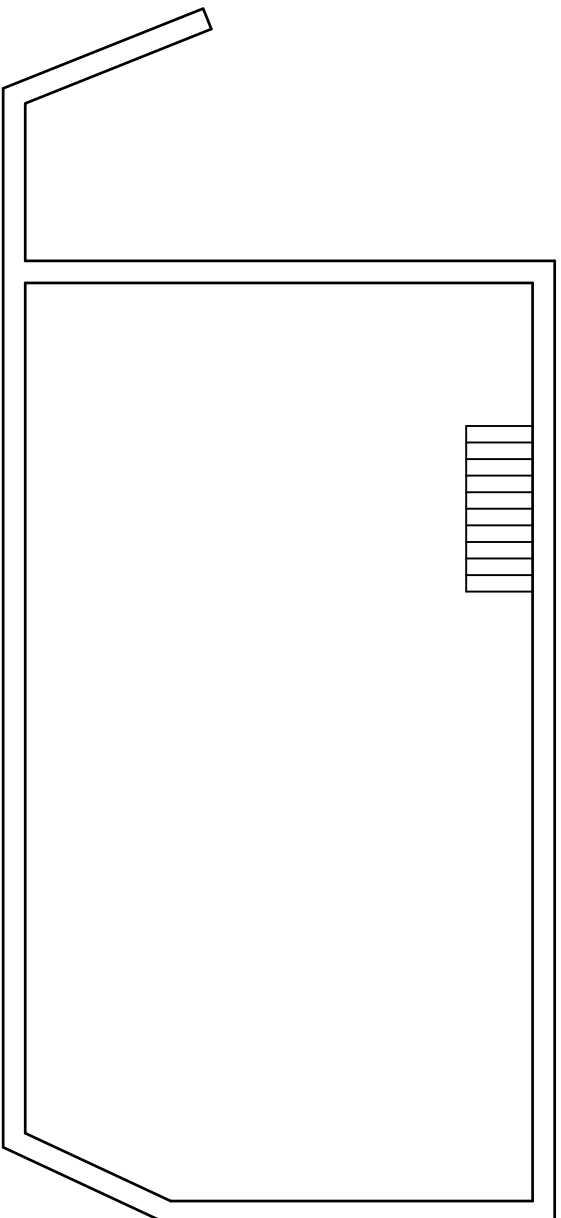
MACHINE ROOM PLAN
SCALE : 1/8" = 1'-0" [3.175mm = 0.3048m]

FIRE PROTECTION
ATTIC PLAN
SCALE : 1/8" = 1'-0" [3.175mm = 0.3048m]

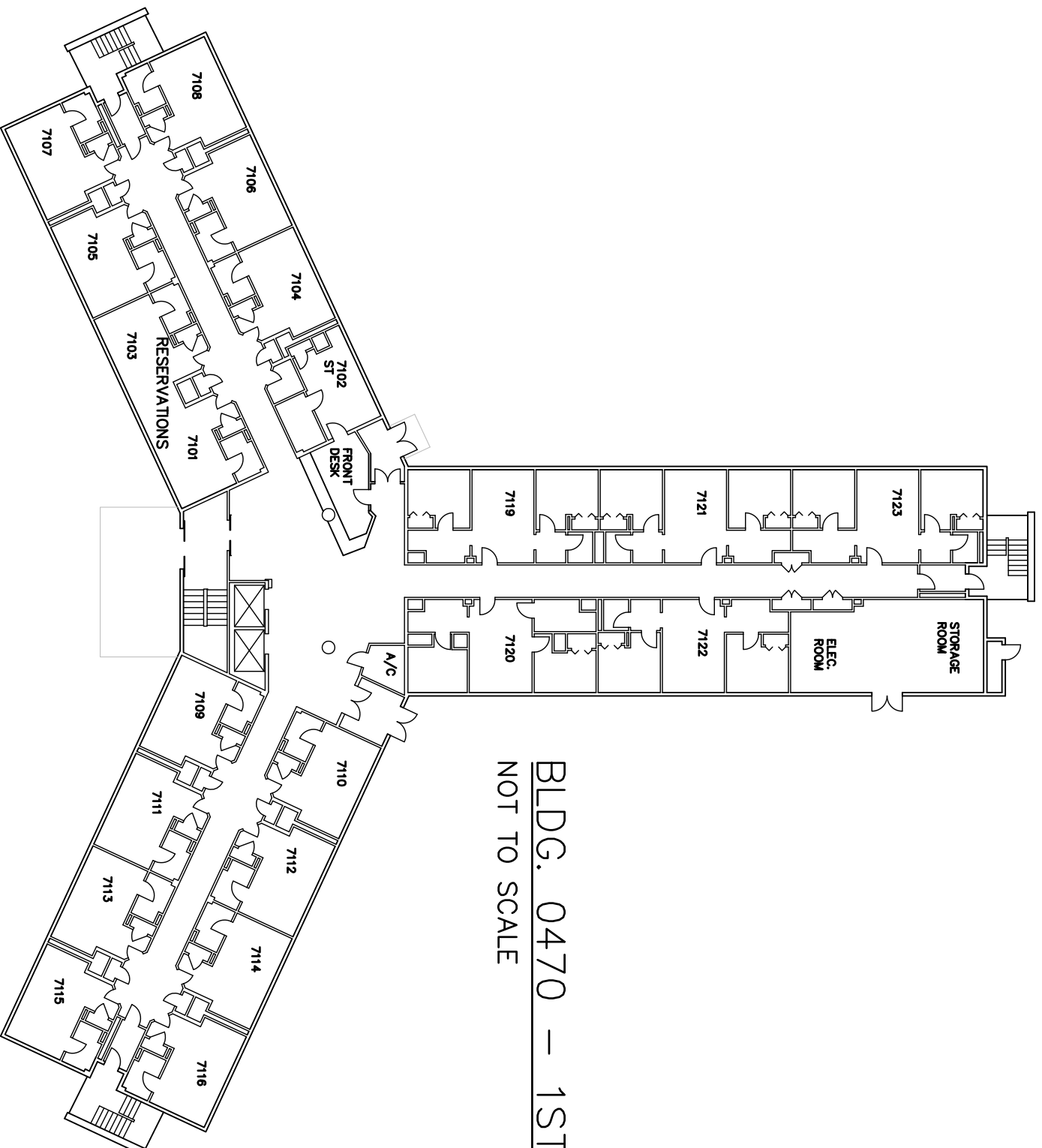
GVA ENGINEERING, L.L.C.
PROJECT No. 9948

REVISION		DATE	DRAWN		APPROVED
UNITED STATES AIR FORCE			AIR EDUCATION AND TRAINING COMMAND		
KEESLER AIR FORCE BASE			MISSISSIPPI		
BLOK1			OFFICE OF CIVIL ENGINEERS		
REPAIR VAQ TYER HOUSE					
ATTIC & MACHINE ROOM PLANS					
FIRE PROTECTION					
SUBMITTED: (Chief of Contracts Design)		RECOMMENDED: (Chief of Engineering)		APPROVED: (Deputy Civil Engineer)	
CLARENCE H. VAUGHN, P.E.		ROBERT C. SHYDU, P.E.		WILLIAM J. POORE, P.E.	
DESIGNED:		SCALE:		DRAWING NUMBER:	
OJF		AS NOTED			
DATE:		PROJECT NUMBER:			
OJF		MAHO 01-1000			
DRAWN:		SHEET		OF	
OJF		12-MAY-05			

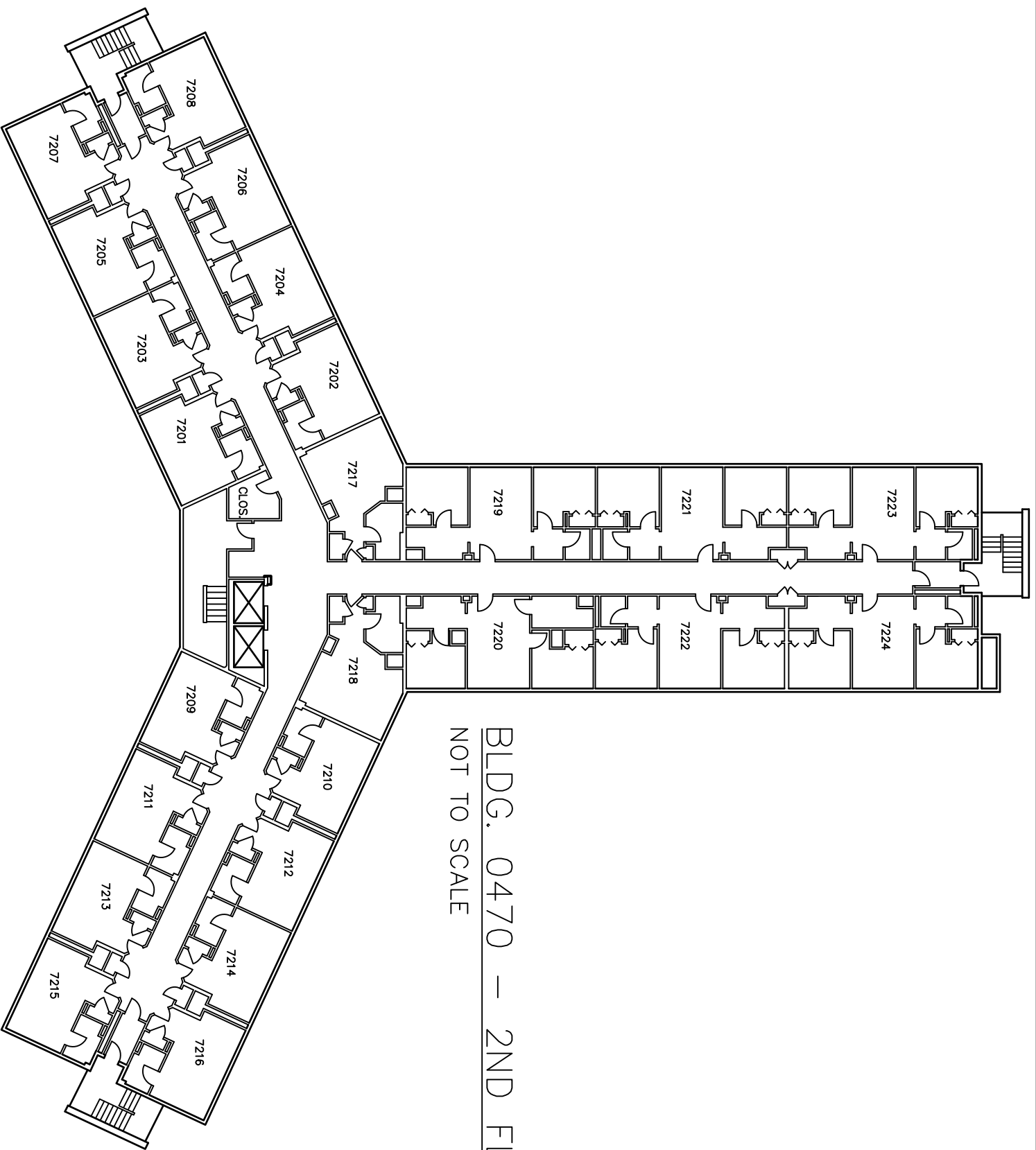
FP4



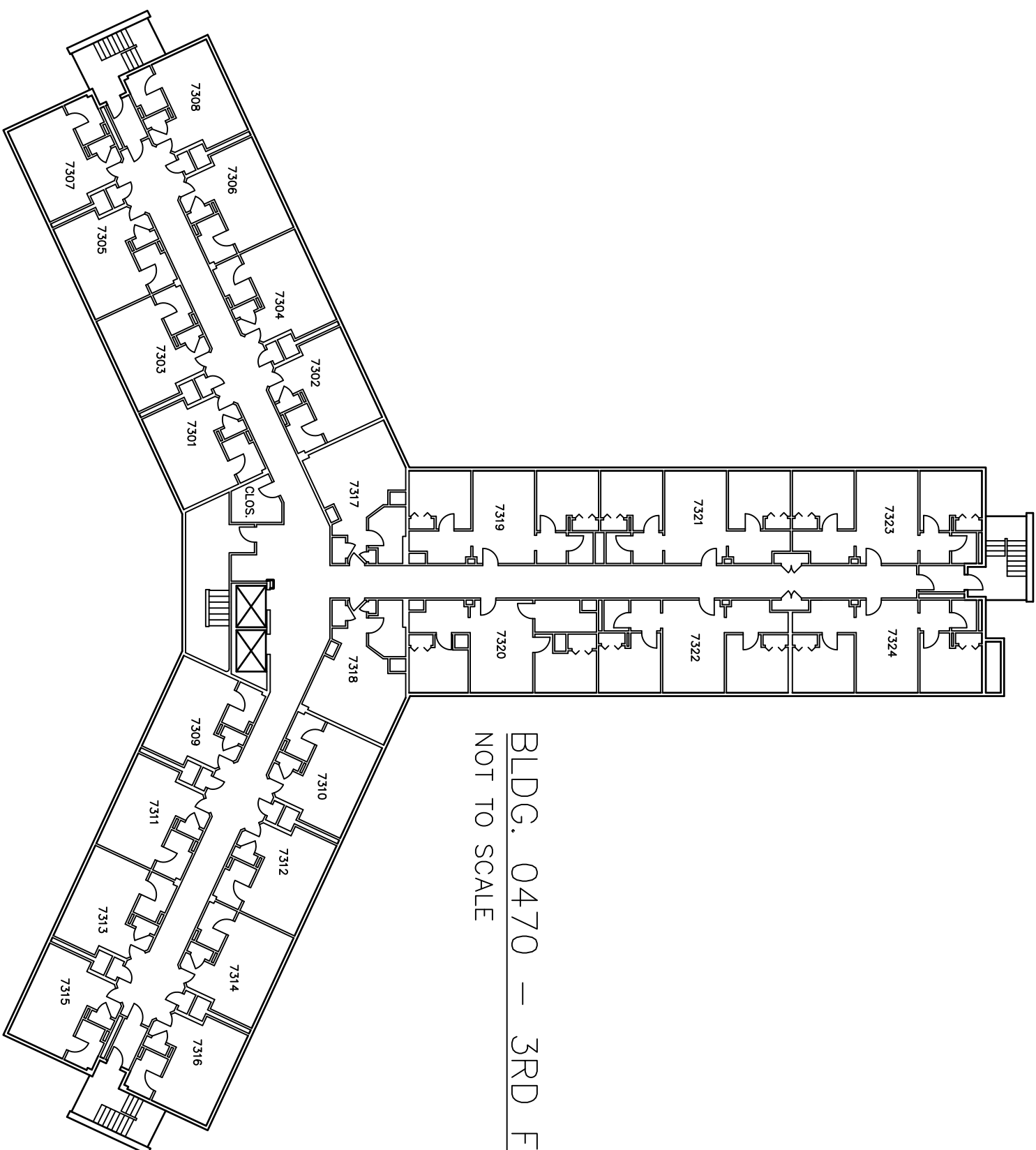
BLDG. 0470 - 7TH FLOOR
NOT TO SCALE



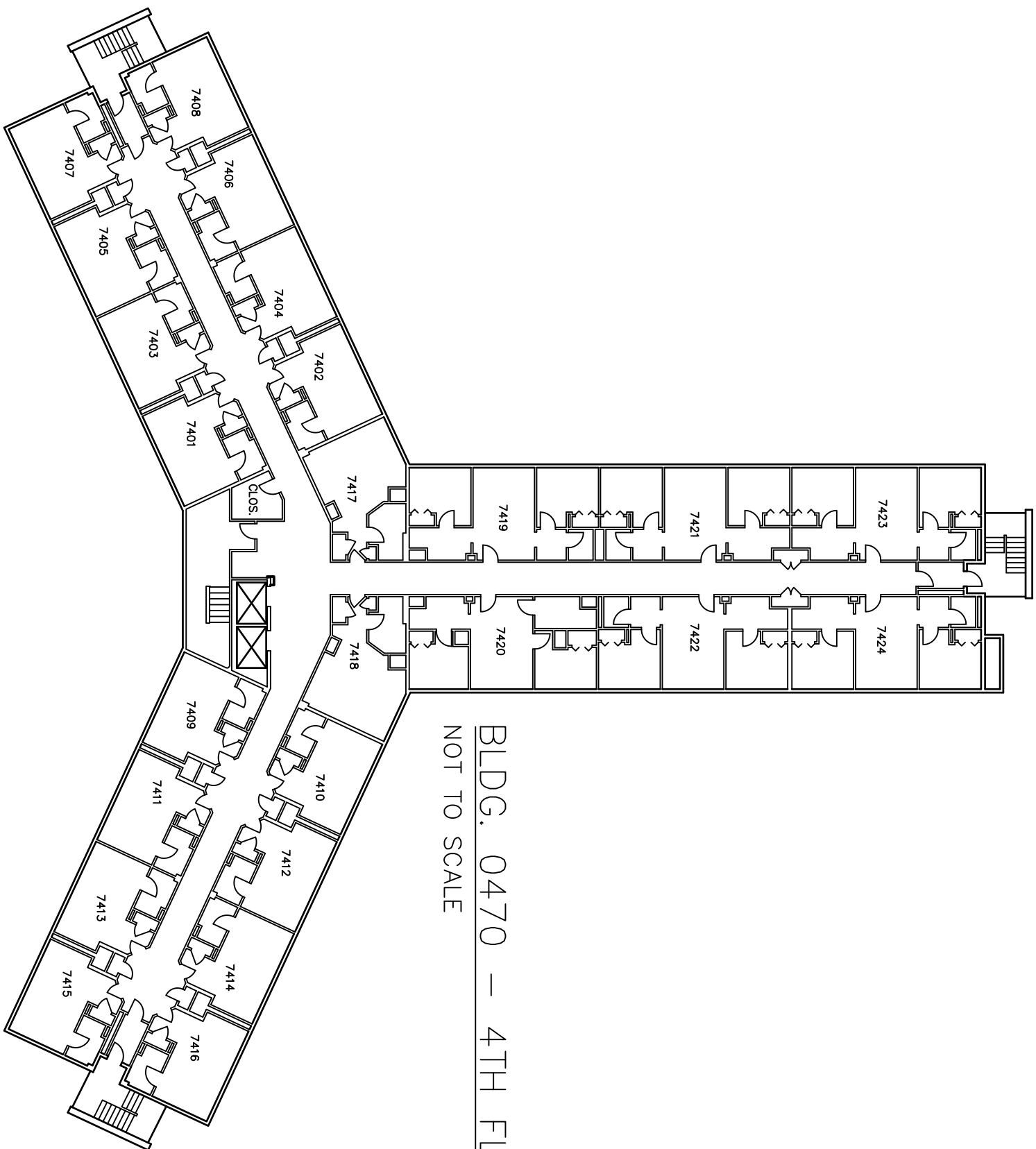
BLDG. 0470 - 1ST FLOOR
NOT TO SCALE



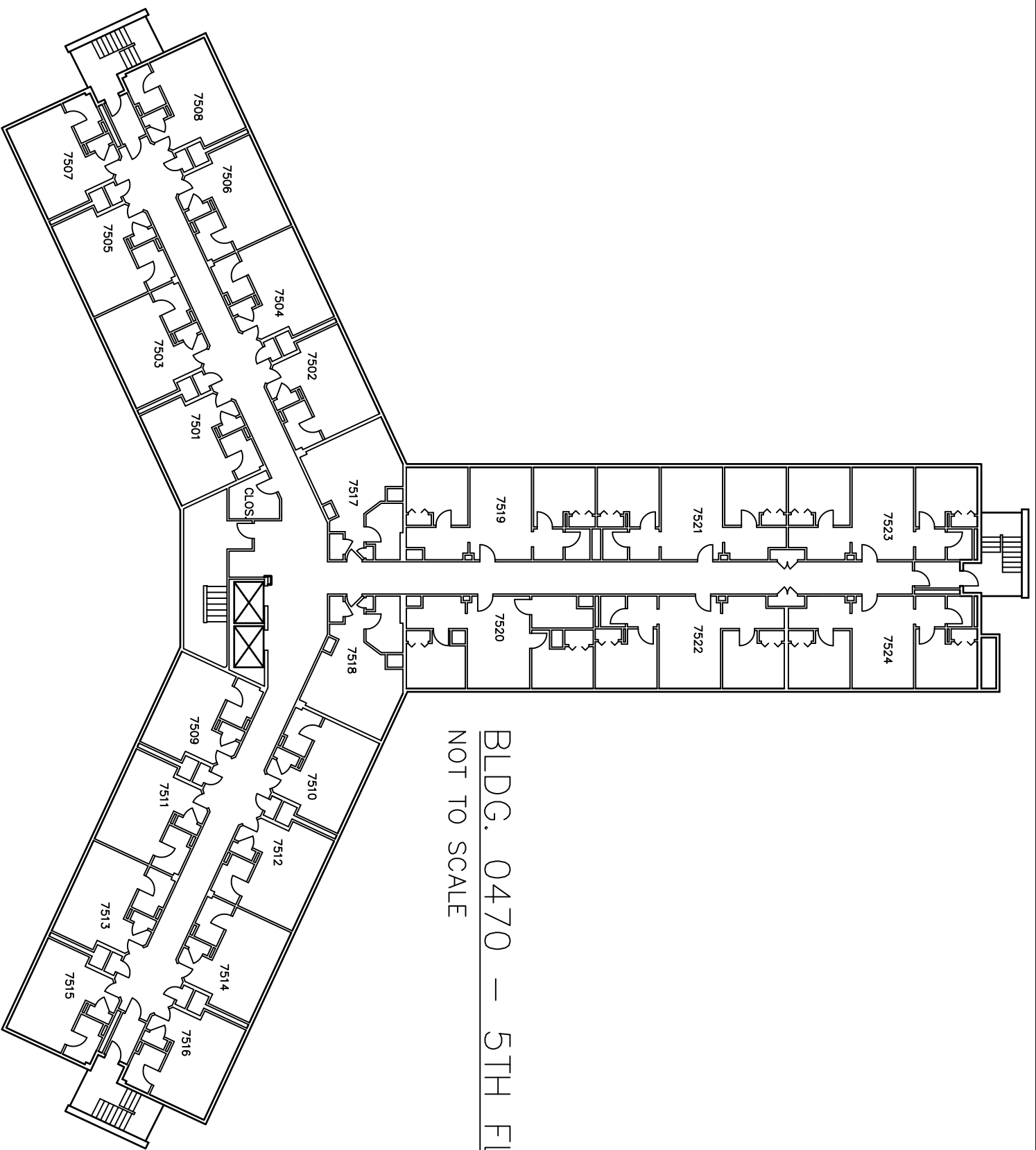
BLDG. 0470 — 2ND FLOOR
NOT TO SCALE



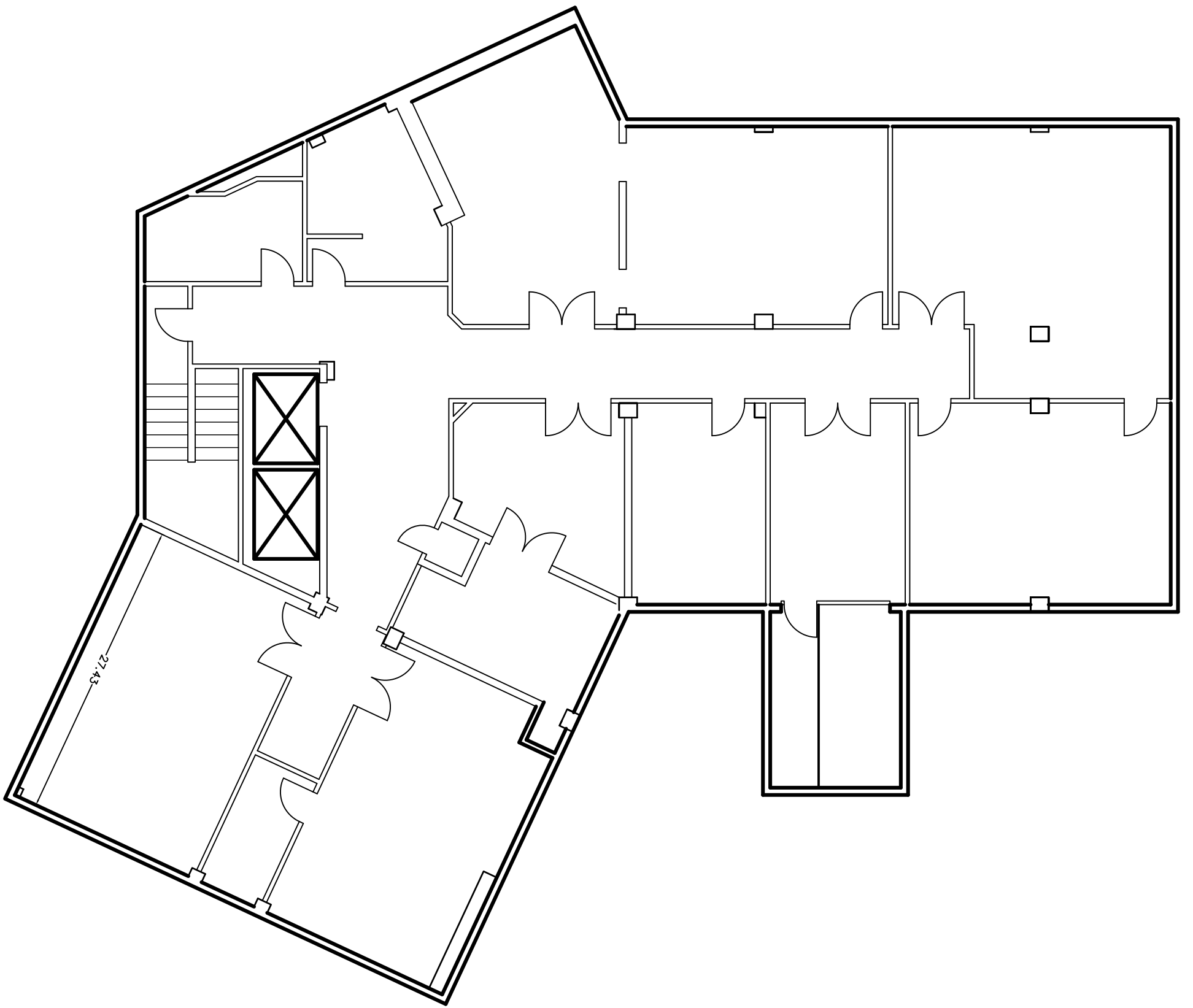
BLDG. 0470 — 3RD FLOOR
NOT TO SCALE

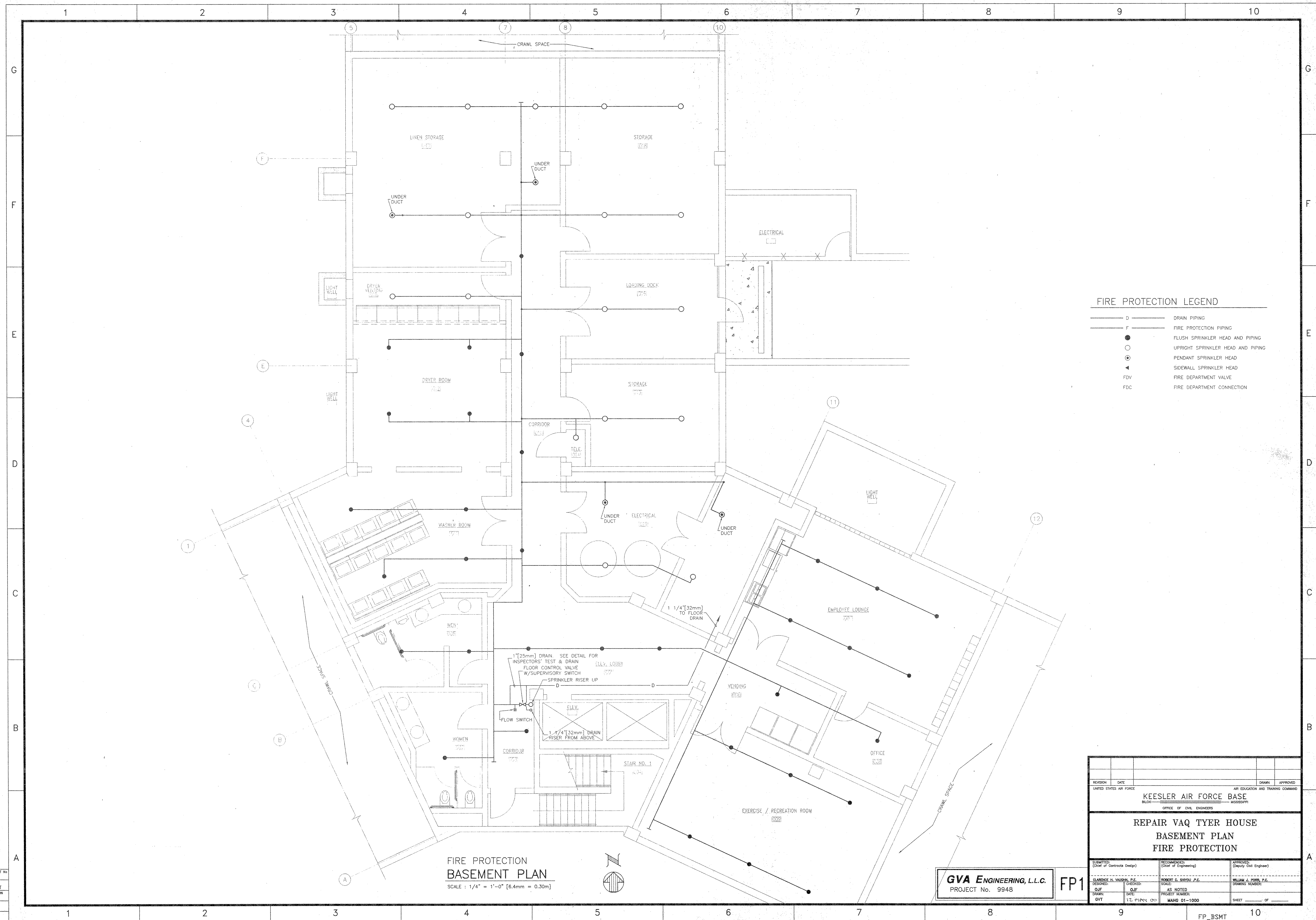


BLDG. 0470 — 4TH FLOOR
NOT TO SCALE



BLDG. 0470 - 5TH FLOOR
NOT TO SCALE





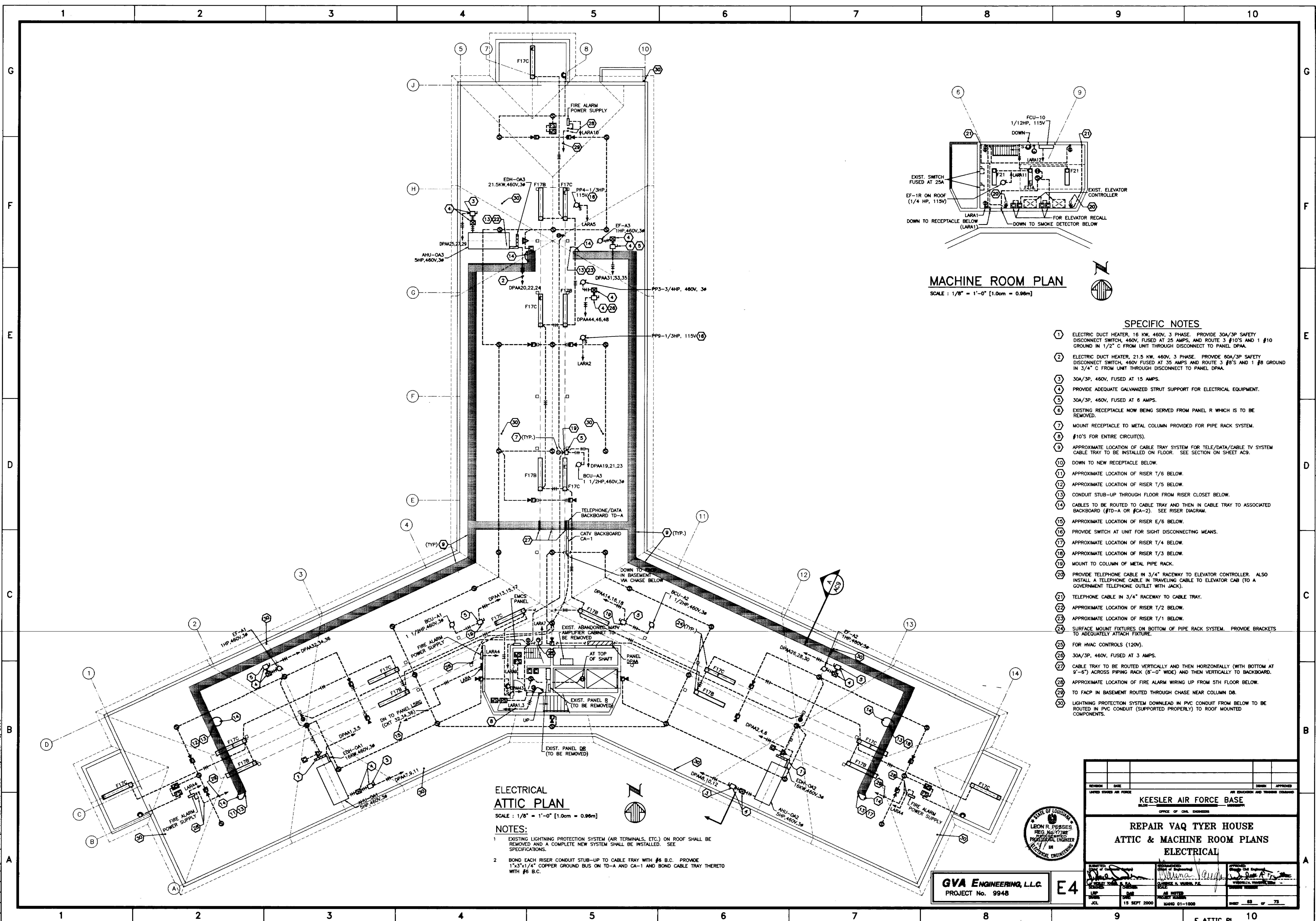
FIRE PROTECTION LEGEND	
D	DRAIN PIPING
F	FIRE PROTECTION PIPING
○	FLUSH SPRINKLER HEAD AND PIPING
●	UPRIGHT SPRINKLER HEAD AND PIPING
⊙	PENDANT SPRINKLER HEAD
◀	SIDEWALL SPRINKLER HEAD
FDV	FIRE DEPARTMENT VALVE
FDC	FIRE DEPARTMENT CONNECTION

FIRE PROTECTION
BASEMENT PLAN
SCALE : 1/4" = 1'-0" [6.4mm = 0.30m]

GVA ENGINEERING, L.L.C.
PROJECT No. 9948

FP1

REVISION	DATE	DESIGNED	CHECKED	DATE	PROJECT NUMBER	DATE	PROJECT NUMBER	DATE	PROJECT NUMBER
UNITED STATES AIR FORCE									
KEESLER AIR FORCE BASE									
BILLOMISSE, MISSISSIPPI									
OFFICE OF CIVIL ENGINEERS									
REPAIR VAQ TYER HOUSE									
BASEMENT PLAN									
FIRE PROTECTION									
SUBMITTED: (Chief of Contracts Design)			RECOMMENDED: (Chief of Engineering)			APPROVED: (Chief of Engineering)			
DESIGNED: GVT			CHECKED: GVT			DATE: 12 MAY 00			PROJECT NUMBER: MAHG 01-1000
DRAWN: GVT			SCALE: AS NOTED			DRAWING NUMBER: SHEET _____ OF _____			



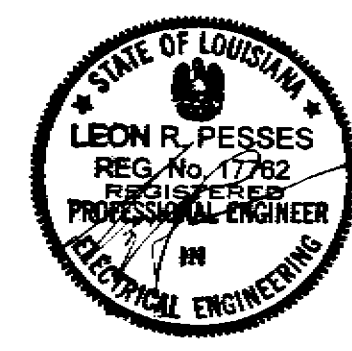
DRAWING NUMBER
63 OF 73
NAN HUI HOLD CORPORATION • IRVINE, CALIFORNIA
REPRODUCED BY N.A. 8/1992 0735-00

T:\CADPROG\9948\E_ATTIC_PL.dwg Wed Sep 13 15:05:50 2000 JCL

OUR PROJECT #	9948
OUR FILE	E_ATTIC_PL
LAST REVISION	9-13-00
PLAT DATE	9-13-00
PLAT SCALE	1=1

- SPECIFIC NOTES**
- 1 FOR COFFEE MAKER, 120V, 18" [457] A.F.F.
 - 2 FOR DISHWASHER, 120V, 24" [610] A.F.F.
 - 3 FOR MICROWAVE, 120V, 65" [1651] A.F.F.
 - 4 FOR REFRIGERATOR, 120V, 36" [914] A.F.F.
 - 5 FOR REFRIGERATOR/MICROWAVE, 120V.
 - 6 TO SMOKE DETECTOR IN CORRIDOR.
 - 7 TO UNDERCABINET FIXTURE, TYPE F14 ABOVE SINK.
 - 8 TO UNDERCABINET FIXTURE, TYPE F14 ABOVE COUNTER.
 - 9 TO PANELBOARD AT RISER E/S. ROUTE THROUGH LIGHTING CONTACTOR AT PANELBOARD FOR CONTROL OF FIXTURE F5 LAMPS.
 - 10 THIS WEEK APPLIES TO THE 1ST FLOOR ONLY (NOT PART OF TYPICAL WORK) SINCE WORK OF OTHER LOCATIONS IS SHOWN ON THE 1/8" SCALE PLANS.
 - 11 WIRING IN RACEWAY TO BACKBOARD AT RISER 1/5.
 - 12 TO PANELBOARD AT RISER E/4. * INDICATES THE PARTICULAR RISER DESIGNATION IN THE ASSOCIATED WING ON THE ASSOCIATED SIDE OF THE CORRIDOR. SEE 1/8" SCALE DRAWINGS FOR RISER DESIGNATIONS.
 - 13 WIRING IN RACEWAY TO BACKBOARD AT RISER 1/4. * INDICATES THE PARTICULAR RISER DESIGNATION IN THE ASSOCIATED WING ON THE ASSOCIATED SIDE OF THE CORRIDOR. SEE 1/8" SCALE DRAWINGS FOR RISER DESIGNATIONS.
 - 14 VARIES. SEE 1/8" SCALE DRAWINGS FOR RISER DESIGNATIONS.
 - 15 SEE ARCHITECTURAL DRAWINGS FOR COORDINATION WITH COLUMN COVERS.
 - 16 DOWN TO BACKBOARD B-1 IN BASEMENT.
 - 17 TO PANELBOARD AT RISER E/3.
 - 18 30A, 3P, 460V FUSED AT 6 AMPS.
 - 19 115V, 1 PHASE WITH INTEGRAL DISCONNECT SWITCH.
 - 20 ROUTE THROUGH LIGHTING CONTACTOR AT PANEL LURE.
 - 21 ACTIVATION OF SMOKE DETECTOR SHALL RECALL ELEVATORS TO SECOND FLOOR LEVEL.
 - 22 LOCATE JUNCTION BOX ABOVE CEILING FOR ELECTRIC DOOR. CONNECT TO ELECTRIC DOOR AS REQUIRED BY WIRING DIAGRAM FURNISHED WITH DOOR SYSTEM.
 - 23 FIRE ALARM REMOTE ALARM DEVICE (TROUBLE).

**ELECTRICAL
ENLARGED FIRST FLOOR PLAN**
SCALE: 1/4" = 1'-0" [1.0cm = 0.98m]

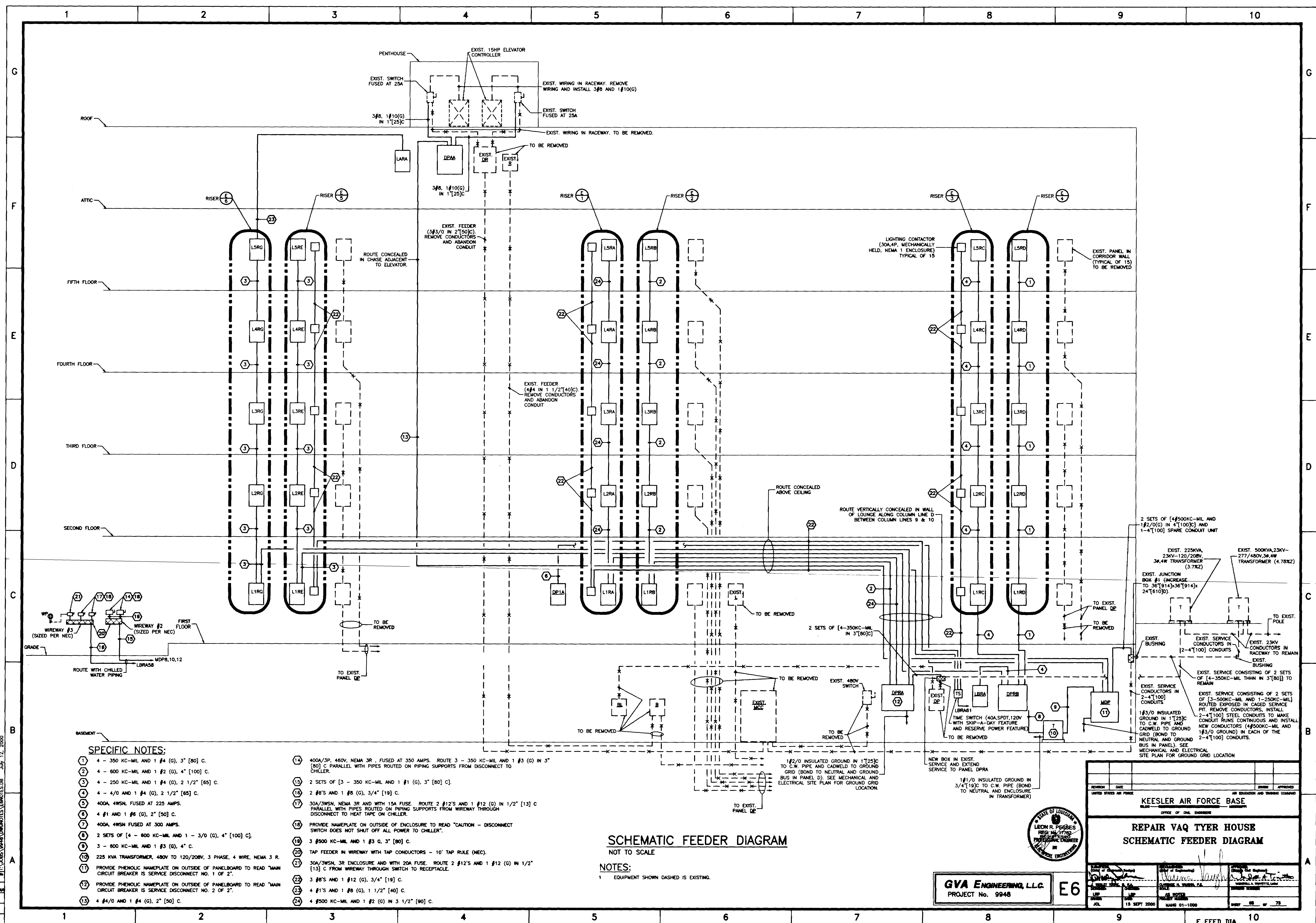


GVA ENGINEERING, L.L.C.
PROJECT No. 9948

E5

REVISION	DATE	BY	APPROVED
KEESLER AIR FORCE BASE OFFICE OF CHIEF ENGINEER			
REPAIR VAQ TYER HOUSE ENLARGED PLAN - FIRST FLOOR ELECTRICAL			
DATE: 15 SEPT 2000		SHEET 54 OF 73	

E-1ST-ENL 10



G

F

E

D

C

B

A

PANEL SCHEDULE											
SURFACE MOUNTED W/DOOR; LIGHTING AND APPLIANCE TYPE											
PANEL: L1BA VOLTS: 120/208 MAIN AMPS: 400 PHASE: 3 WIRES: 4 MLO (DOUBLE LUGS) MINIMUM 10,000 AIC											
CIRCUIT NO.	TRIP	NO.	CIRCUIT	LOAD SERVED	CIRCUIT DESIG.	PHASE LOAD V.A.	CIRCUIT DESIG.	LOAD SERVED	CIRCUIT NO.	TRIP	NO.
1	20	1	RM 120 - DISHWASHER & RECEPT.	A	<1200 1500	B	RM 120 - FANS	2	20	1	
3	20	1	RM 120 - MICROWAVE	C	<1000 675	D	RM 120 - LIGHTING & RECEPT.	4	20	1	
5	20	1	RM 120 - REFRIG. & RECEPT.	E	<1380 970	F	RM 120 - LIGHTING & RECEPT.	6	20	1	
7	50	2	RM 120 - RANGE	G	<4050 1250	H	RM 120 - LIGHTING & RECEPT.	8	20	1	
9			RM 120 - RANGE	I	<4050 970	J	RM 120 - LIGHTING & RECEPT.	10	20	1	
11	20	1	CORRIDOR LIGHTING		<750 1200	K	RM 120 - BATHROOM GFI	12	20	1	
13	20	1	CORRIDOR RECEPTACLES		<750 1200	L	RM 120 - FCU-4 & 5	14	15	1	
15	20	1	RM 122 - DISHWASHER & RECEPT.	A	<1200 1500	B	RM 122 - FANS	16	20	1	
17	20	1	RM 122 - MICROWAVE	C	<1000 675	D	RM 122 - LIGHTING & RECEPT.	18	20	1	
19	20	1	RM 122 - REFRIG. & RECEPT.	E	<1380 970	F	RM 122 - LIGHTING & RECEPT.	20	20	1	
21	50	2	RM 122 - RANGE	G	<4050 1250	H	RM 122 - LIGHTING & RECEPT.	22	20	1	
23			RM 122 - RANGE	I	<4050 970	J	RM 122 - LIGHTING & RECEPT.	24	20	1	
25	20	1	RM 122 - F.A. DEVICES	M	<500 1200	K	RM 122 - BATHROOM GFI	26	20	1	
27	20	1	RM 120 - F.A. DEVICES	M	<500 750	L	RM 122 - FCU 4 & 5	28	15	1	
29	20	1	RM 124 - LIGHTING		<720 1000		CARD READERS	30	20	1	
31	20	1	RM 124 - RECEPT.		<720 500		HVAC CONTROLS	32	20	1	
33	20	1	SPARE		<1000 1000		SPARE	34	20	1	
35	20	1	DHWB-2		<1278 1000		RM 124 - UNIT HEATER	36	15	1	
37	20	1	DHWB-1		<1278 1000		SPARE	38	20	1	
39	20	1	SPARE		<1000 1000		SPARE	40	20	1	
41	60	1	SPARE		<1000 720		SPARE	42	60	1	
TOTAL CONNECTED LOAD			51.5 KVA	TOTAL		17498	19915	14133	DEMAND LINE AMPS: NA		
ESTIMATED DEMAND LOAD			NA								

PANEL SCHEDULE											
SURFACE MOUNTED W/DOOR; LIGHTING AND APPLIANCE TYPE											
PANEL: L2BA VOLTS: 120/208 MAIN AMPS: 400 PHASE: 3 WIRES: 4 MLO (DOUBLE LUGS EXCEPT FOR PANEL L5BA) MINIMUM 10,000 AIC											
CIRCUIT NO.	TRIP	NO.	CIRCUIT	LOAD SERVED	CIRCUIT DESIG.	PHASE LOAD V.A.	CIRCUIT DESIG.	LOAD SERVED	CIRCUIT NO.	TRIP	NO.
1	20	1	RM 220 - DISHWASHER & RECEPT.	A	<1200 1500	B	RM 220 - FANS	2	20	1	
3	20	1	RM 220 - MICROWAVE	C	<1000 675	D	RM 220 - LIGHTING & RECEPT.	4	20	1	
5	20	1	RM 220 - REFRIG. & RECEPT.	E	<1380 970	F	RM 220 - LIGHTING & RECEPT.	6	20	1	
7	50	2	RM 220 - RANGE	G	<4050 1250	H	RM 220 - LIGHTING & RECEPT.	8	20	1	
9			RM 220 - RANGE	I	<4050 970	J	RM 220 - LIGHTING & RECEPT.	10	20	1	
11	20	1	CORRIDOR LIGHTING		<750 1200	K	RM 220 - BATHROOM GFI	12	20	1	
13	20	1	CORRIDOR RECEPTACLES		<750 1200	L	RM 220 - FCU-7 & 8	14	15	1	
15	20	1	RM 222 - DISHWASHER & RECEPT.	A	<1200 1500	B	RM 222 - FANS	16	20	1	
17	20	1	RM 222 - MICROWAVE	C	<1000 675	D	RM 222 - LIGHTING & RECEPT.	18	20	1	
19	20	1	RM 222 - REFRIG. & RECEPT.	E	<1380 970	F	RM 222 - LIGHTING & RECEPT.	20	20	1	
21	50	2	RM 222 - RANGE	G	<4050 1250	H	RM 222 - LIGHTING & RECEPT.	22	20	1	
23			RM 222 - RANGE	I	<4050 970	J	RM 222 - LIGHTING & RECEPT.	24	20	1	
25	20	1	RM 222 - F.A. DEVICES	M	<500 1200	K	RM 222 - BATHROOM GFI	26	20	1	
27	20	1	RM 220 - F.A. DEVICES	M	<500 750	L	RM 222 - FCU 7 & 8	28	15	1	
29	20	1	RM 224 - DISHWASHER & RECEPT.	A	<1000 1500	B	RM 224 - FANS	30	20	1	
31	20	1	RM 224 - MICROWAVE	C	<1000 675	D	RM 224 - LIGHTING & RECEPT.	32	20	1	
33	20	1	RM 224 - REFRIG. & RECEPT.	E	<1380 970	F	RM 224 - LIGHTING & RECEPT.	34	20	1	
35	50	2	RM 224 - RANGE	G	<4050 1250	H	RM 224 - LIGHTING & RECEPT.	36	20	1	
37			RM 224 - RANGE	I	<4050 970	J	RM 224 - LIGHTING & RECEPT.	38	20	1	
39	20	1	RM 224 - F.A. DEVICES	M	<500 1200	K	RM 224 - BATHROOM GFI	40	20	1	
41	20	1	SPARE		<1000 720	L	RM 224 - FCU 7 & 8	42	15	1	
TOTAL CONNECTED LOAD			60.9 KVA	TOTAL		20245	19965	20725	DEMAND LINE AMPS: NA		
ESTIMATED DEMAND LOAD			NA								

NOTE: PANELS L3BA, L4BA & L5BA ARE TYPICAL.

PANEL SCHEDULE											
SURFACE MOUNTED W/DOOR; LIGHTING AND APPLIANCE TYPE											
PANEL: L1BB VOLTS: 120/208 MAIN AMPS: 400 PHASE: 3 WIRES: 4 MLO (DOUBLE LUGS) MINIMUM 10,000 AIC											
CIRCUIT NO.	TRIP	NO.	CIRCUIT	LOAD SERVED	CIRCUIT DESIG.	PHASE LOAD V.A.	CIRCUIT DESIG.	LOAD SERVED	CIRCUIT NO.	TRIP	NO.
1	20	1	RM 119 - DISHWASHER & RECEPT.	A	<1200 1500	B	RM 119 - FANS	2	20	1	
3	20	1	RM 119 - MICROWAVE	C	<1000 675	D	RM 119 - LIGHTING & RECEPT.	4	20	1	
5	20	1	RM 119 - REFRIG. & RECEPT.	E	<1380 970	F	RM 119 - LIGHTING & RECEPT.	6	20	1	
7	50	2	RM 119 - RANGE	G	<4050 1250	H	RM 119 - LIGHTING & RECEPT.	8	20	1	
9			RM 119 - RANGE	I	<4050 970	J	RM 119 - LIGHTING & RECEPT.	10	20	1	
11	30	2	CORRIDOR 140 FCU		<2250 1200	K	RM 119 - BATHROOM GFI	12	20	1	
13			CORRIDOR 140 FCU		<2250 480	L	RM 119 - FCU-4 & 5	14	15	1	
15	20	1	RM 121 - DISHWASHER & RECEPT.	A	<1200 1500	B	RM 121 - FANS	16	20	1	
17	20	1	RM 121 - MICROWAVE	C	<1000 675	D	RM 121 - LIGHTING & RECEPT.	18	20	1	
19	20	1	RM 121 - REFRIG. & RECEPT.	E	<1380 970	F	RM 121 - LIGHTING & RECEPT.	20	20	1	
21	50	2	RM 121 - RANGE	G	<4050 1250	H	RM 121 - LIGHTING & RECEPT.	22	20	1	
23			RM 121 - RANGE	I	<4050 970	J	RM 121 - LIGHTING & RECEPT.	24	20	1	
25	20	1	RM 121 - F.A. DEVICES	M	<500 1200	K	RM 121 - BATHROOM GFI	26	20	1	
27	20	1	RM 119 - F.A. DEVICES	M	<500 750	L	RM 121 - FCU 4 & 5	28	15	1	
29	20	1	RM 123 - DISHWASHER & RECEPT.	A	<1000 1500	B	RM 123 - FANS	30	20	1	
31	20	1	RM 123 - MICROWAVE	C	<1000 675	D	RM 123 - LIGHTING & RECEPT.	32	20	1	
33	20	1	RM 123 - REFRIG. & RECEPT.	E	<1380 970	F	RM 123 - LIGHTING & RECEPT.	34	20	1	
35	50	2	RM 123 - RANGE	G	<4050 1250	H	RM 123 - LIGHTING & RECEPT.	36	20	1	
37			RM 123 - RANGE	I	<4050 970	J	RM 123 - LIGHTING & RECEPT.	38	20	1	
39	20	1	RM 123 - F.A. DEVICES	M	<500 1200	K	RM 123 - BATHROOM GFI	40	20	1	
41	20	1	SPARE		<1000 720	L	RM 123 - FCU 4 & 5	42	15	1	
TOTAL CONNECTED LOAD			63.9 KVA	TOTAL		21715	19965	22215	DEMAND LINE AMPS: NA		
ESTIMATED DEMAND LOAD			NA								

PANEL SCHEDULE											
SURFACE MOUNTED W/DOOR; LIGHTING AND APPLIANCE TYPE											
PANEL: L2BB VOLTS: 120/208 MAIN AMPS: 400 PHASE: 3 WIRES: 4 MLO (DOUBLE LUGS EXCEPT FOR PANEL L5BB) MINIMUM 10,000 AIC											
CIRCUIT NO.	TRIP	NO.	CIRCUIT	LOAD SERVED	CIRCUIT DESIG.	PHASE LOAD V.A.	CIRCUIT DESIG.	LOAD SERVED	CIRCUIT NO.	TRIP	NO.
1	20	1	RM 219 - DISHWASHER & RECEPT.	A	<1200 1500	B	RM 219 - FANS	2	20	1	
3	20	1	RM 219 - MICROWAVE	C	<1000 675	D	RM 219 - LIGHTING & RECEPT.	4	20	1	
5	20	1	RM 219 - REFRIG. & RECEPT.	E	<1380 970	F	RM 219 - LIGHTING & RECEPT.	6	20	1	
7	50	2	RM 219 - RANGE	G	<4050 1250	H	RM 219 - LIGHTING & RECEPT.	8	20	1	
9			RM 219 - RANGE	I	<4050 970	J	RM 219 - LIGHTING & RECEPT.	10	20	1	
11	30	2	CORRIDOR 240 - FCU		<2250 1200	K	RM 219 - BATHROOM GFI	12	20	1	
13			CORRIDOR 240 - FCU		<2250 480	L	RM 219 - FCU-7 & 8	14	15	1	
15	20	1	RM 221 - DISHWASHER & RECEPT.	A	<1200 1500	B	RM 221 - FANS	16	20	1	
17	20	1	RM 221 - MICROWAVE	C	<1000 675	D	RM 221 - LIGHTING & RECEPT.	18	20	1	
19	20	1	RM 221 - REFRIG. & RECEPT.	E	<1380 970	F	RM 221 - LIGHTING & RECEPT.	20	20	1	
21	50	2	RM 221 - RANGE	G	<4050 1250	H	RM 221 - LIGHTING & RECEPT.	22	20	1	
23			RM 221 - RANGE	I	<4050 970	J	RM 221 - LIGHTING & RECEPT.	24	20	1	
25	20	1	RM 221 - F.A. DEVICES	M	<500 1200	K	RM 221 - BATHROOM GFI	26	20	1	
27	20	1	RM 219 - F.A. DEVICES	M	<500 750	L	RM 221 - FCU 7 & 8	28	15	1	
29	20	1	RM 223 - DISHWASHER & RECEPT.	A	<1000 1500	B	RM 223 - FANS	30	20	1	
31	20	1	RM 223 - MICROWAVE	C	<1000 675	D	RM 223 - LIGHTING & RECEPT.	32	20	1	
33	20	1	RM 223 - REFRIG. & RECEPT.	E	<1380 970	F	RM 223 - LIGHTING & RECEPT.	34	20	1	
35	50	2	RM 223 - RANGE	G	<4050 1250	H	RM 223 - LIGHTING & RECEPT.	36	20	1	
37			RM 223 - RANGE	I	<4050 970	J	RM 223 - LIGHTING & RECEPT.	38	20	1	
39	20	1	RM 223 - F.A. DEVICES	M	<500 1200	K	RM 223 - BATHROOM GFI	40	20	1	
41	20	1	SPARE		<1000 720	L	RM 223 - FCU 7 & 8	42	15	1	
TOTAL CONNECTED LOAD			63.9 KVA	TOTAL		21715	19965	22215	DEMAND LINE AMPS: NA		
ESTIMATED DEMAND LOAD			NA								

NOTE: PANELS L3BB, L4BB & L5BB ARE TYPICAL.

GVA ENGINEERING, L.L.C.
PROJECT No. 9948

E9

REVISION	DATE	BY	APPROVED
UNITED STATES AIR FORCE			
KEESLER AIR FORCE BASE			
OFFICE OF CHIEF ENGINEER			
REPAIR VAQ TYER HOUSE			
ELECTRICAL			
PANELBOARD SCHEDULES			
DESIGNED BY	CHECKED BY	APPROVED BY	DATE
DATE	DATE	DATE	DATE
DATE			

T: \CADPROJ\9348\E_PWL1.dwg Tue Sep 12 12:25:51 2000 JCL

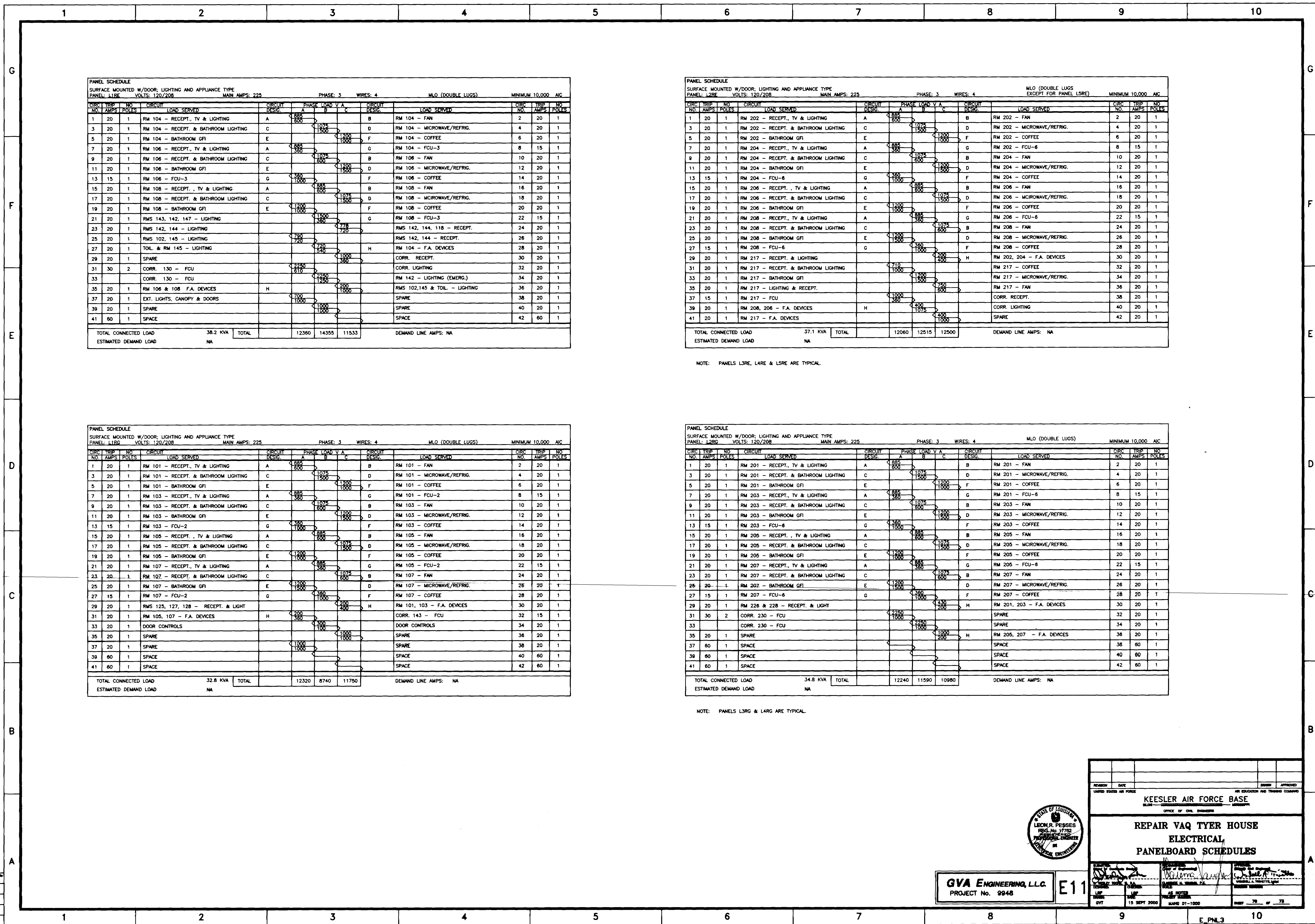
GR. PROJECT NO.	9948
ONE FILE	E_PNL1
LAST REVISION	9-12-00
PLOT DATE	9-12-00
PLOT SCALE	1 = 1

DRAWING NUMBER

DRAWING NUMBER
OLD CORPORATION • IRVINE, CALIFORNIA

DRAWING NUMBER
470-16

NAMING NUMBER
008 OF 73



PANEL SCHEDULE													
SURFACE MOUNTED W/DOOR; LIGHTING AND APPLIANCE TYPE													
PANEL: L126		VOLTS: 120/208		MAIN AMPS: 225		PHASE: 3		WIRES: 4		MLO (DOUBLE LUGS)		MINIMUM 10,000 AIC	
CIRCUIT NO.	TRIP	NO.	CIRCUIT	LOAD SERVED	CIRCUIT DESIG.	PHASE	LOAD V A	CIRCUIT DESIG.	LOAD SERVED	CIRCUIT NO.	TRIP		
NO.	AMPS	POLES								NO.	AMPS		
1	20	1	RM 104 - RECEPT., TV & LIGHTING	A	885 800		1075 1500	B	RM 104 - FAN	2	20		
3	20	1	RM 104 - RECEPT. & BATHROOM LIGHTING	C	885 800		1075 1500	D	RM 104 - MICROWAVE/REFRIG.	4	20		
5	20	1	RM 104 - BATHROOM GFI	E	885 800		1075 1500	F	RM 104 - COFFEE	6	20		
7	20	1	RM 106 - RECEPT., TV & LIGHTING	A	885 800		1075 1500	G	RM 104 - FCU-3	8	15		
9	20	1	RM 106 - RECEPT. & BATHROOM LIGHTING	C	885 800		1075 1500	B	RM 106 - FAN	10	20		
11	20	1	RM 106 - BATHROOM GFI	E	885 800		1075 1500	D	RM 106 - MICROWAVE/REFRIG.	12	20		
13	15	1	RM 106 - FCU-3	G	380 1000			F	RM 106 - COFFEE	14	20		
15	20	1	RM 108 - RECEPT., TV & LIGHTING	A	885 800		1075 1500	B	RM 108 - FAN	16	20		
17	20	1	RM 108 - RECEPT. & BATHROOM LIGHTING	C	885 800		1075 1500	D	RM 108 - MICROWAVE/REFRIG.	18	20		
19	20	1	RM 108 - BATHROOM GFI	E	885 800		1075 1500	F	RM 108 - COFFEE	20	20		
21	20	1	RMS 143, 142, 147 - LIGHTING		885 800		1075 1500	G	RM 108 - FCU-3	22	15		
23	20	1	RMS 142, 144 - LIGHTING		790 720		775 720		RMS 142, 144, 118 - RECEPT.	24	20		
25	20	1	RMS 102, 145 - LIGHTING		790 720		775 720		RMS 142, 144 - RECEPT.	26	20		
27	20	1	TOIL. & RM 145 - LIGHTING		790 720		775 720	H	RM 104 - F.A. DEVICES	28	20		
29	20	1	SPARE		885 800		1075 1500		CORR. RECEPT.	30	20		
31	30	2	CORR. 130 - FCU		2250 810		2250 810		CORR. LIGHTING	32	20		
33	30	2	CORR. 130 - FCU		2250 810		2250 1250		RM 142 - LIGHTING (EMERG.)	34	20		
35	20	1	RM 106 & 108 F.A. DEVICES	H	885 800		1075 1500		RMS 102,145 & TOIL. - LIGHTING	36	20		
37	20	1	EXT. LIGHTS, CANOPY & DOORS		885 800		1075 1500		SPARE	38	20		
39	20	1	SPARE		885 800		1075 1500		SPARE	40	20		
41	60	1	SPACE		885 800		1075 1500		SPACE	42	60		
TOTAL CONNECTED LOAD			38.2 KVA	TOTAL			12360	14355	11533	DEMAND LINE AMPS: NA			
ESTIMATED DEMAND LOAD			NA										

PANEL SCHEDULE											
SURFACE MOUNTED W/DOOR, LIGHTING AND APPLIANCE TYPE											
PANEL: L126 MAIN AMPS: 225 PHASE: 3 WIRES: 4 MLO (DOUBLE LUGS EXCEPT FOR PANEL L5RE) MINIMUM 10,000 AIC											
CIRCUIT NO.	TRIP AMPS	NO. POLES	LOAD SERVED	CIRCUIT DESIG.	PHASE	LOAD V A	CIRCUIT DESIG.	LOAD SERVED	CIRCUIT NO.	TRIP AMPS	NO. POLES
1	20	1	RM 202 - RECEPT., TV & LIGHTING	A	885 600	1075 1500	B	RM 202 - FAN	2	20	1
3	20	1	RM 202 - RECEPT. & BATHROOM LIGHTING	C	885 600	1075 1500	D	RM 202 - MICROWAVE/REFRIG.	4	20	1
5	20	1	RM 202 - BATHROOM GFI	E	885 600	1075 1500	F	RM 202 - COFFEE	6	20	1
7	20	1	RM 204 - RECEPT., TV & LIGHTING	A	885 600	1075 1500	G	RM 202 - FCU-6	8	15	1
9	20	1	RM 204 - RECEPT. & BATHROOM LIGHTING	C	885 600	1075 1500	B	RM 204 - FAN	10	20	1
11	20	1	RM 204 - BATHROOM GFI	E	885 600	1075 1500	D	RM 204 - MICROWAVE/REFRIG.	12	20	1
13	15	1	RM 204 - FCU-6	G	885 600	1075 1500	F	RM 204 - COFFEE	14	20	1
15	20	1	RM 206 - RECEPT., TV & LIGHTING	A	885 600	1075 1500	B	RM 206 - FAN	16	20	1
17	20	1	RM 206 - RECEPT. & BATHROOM LIGHTING	C	885 600	1075 1500	D	RM 206 - MICROWAVE/REFRIG.	18	20	1
19	20	1	RM 206 - BATHROOM GFI	E	885 600	1075 1500	F	RM 206 - COFFEE	20	20	1
21	20	1	RM 208 - RECEPT., TV & LIGHTING	A	885 600	1075 1500	G	RM 206 - FCU-6	22	15	1
23	20	1	RM 208 - RECEPT. & BATHROOM LIGHTING	C	885 600	1075 1500	B	RM 208 - FAN	24	20	1
25	20	1	RM 208 - BATHROOM GFI	E	885 600	1075 1500	D	RM 208 - MICROWAVE/REFRIG.	26	20	1
27	15	1	RM 208 - FCU-6	G	885 600	1075 1500	F	RM 208 - COFFEE	28	20	1
29	20	1	RM 217 - RECEPT. & LIGHTING		710 1000	800 1200	H	RM 202, 204 - F.A. DEVICES	30	20	1
31	20	1	RM 217 - RECEPT. & BATHROOM LIGHTING		710 1000	800 1200		RM 217 - COFFEE	32	20	1
33	20	1	RM 217 - BATHROOM GFI		710 1000	800 1200		RM 217 - MICROWAVE/REFRIG.	34	20	1
35	20	1	RM 217 - LIGHTING & RECEPT.		710 1000	800 1200		RM 217 - FAN	36	20	1
37	15	1	RM 217 - FCU		710 1000	800 1200		CORR. RECEPT.	38	20	1
39	20	1	RM 208, 206 - F.A. DEVICES	H	400 1075	400 1500		CORR. LIGHTING	40	20	1
41	20	1	RM 217 - F.A. DEVICES		400 1075	400 1500		SPARE	42	20	1
TOTAL CONNECTED LOAD				37.1 KVA	TOTAL		12060	12515	12500	DEMAND LINE AMPS: NA	
ESTIMATED DEMAND LOAD				NA							

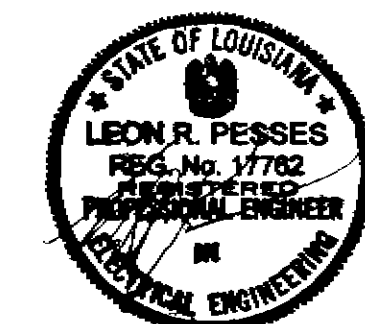
NOTE: PANELS L126, L128 & L129 ARE TYPICAL.

PANEL SCHEDULE											
SURFACE MOUNTED W/DOOR; LIGHTING AND APPLIANCE TYPE											
PANEL: L128		VOLTS: 120/208		MAIN AMPS: 225		PHASE: 3		WIRES: 4		MLO (DOUBLE LUGS)	
MINIMUM 10,000 AIC											
CIRCUIT NO.	TRIP NO.	NO. POLES	CIRCUIT	LOAD SERVED	CIRCUIT DESIG.	PHASE	LOAD V A	CIRCUIT DESIG.	LOAD SERVED	CIRCUIT NO.	TRIP NO.
											POLES
1	20	1	RM 101 - RECEPT., TV & LIGHTING	A	885 600	A	1075 1500	B	RM 101 - FAN	2	20
3	20	1	RM 101 - RECEPT. & BATHROOM LIGHTING	C	885 600		1075 1500	D	RM 101 - MICROWAVE/REFRIG.	4	20
5	20	1	RM 101 - BATHROOM GFI	E	885 600		1075 1500	F	RM 101 - COFFEE	6	20
7	20	1	RM 103 - RECEPT., TV & LIGHTING	A	885 600	A	1075 1500	G	RM 101 - FCU-2	8	15
9	20	1	RM 103 - RECEPT. & BATHROOM LIGHTING	C	885 600		1075 1500	B	RM 103 - FAN	10	20
11	20	1	RM 103 - BATHROOM GFI	E	885 600		1075 1500	D	RM 103 - MICROWAVE/REFRIG.	12	20
13	15	1	RM 103 - FCU-2	G	885 600		1075 1500	F	RM 103 - COFFEE	14	20
15	20	1	RM 105 - RECEPT., TV & LIGHTING	A	885 600	A	1075 1500	B	RM 105 - FAN	16	20
17	20	1	RM 105 - RECEPT. & BATHROOM LIGHTING	C	885 600		1075 1500	D	RM 105 - MICROWAVE/REFRIG.	18	20
19	20	1	RM 105 - BATHROOM GFI	E	885 600		1075 1500	F	RM 105 - COFFEE	20	20
21	20	1	RM 107 - RECEPT., TV & LIGHTING	A	885 600	A	1075 1500	G	RM 105 - FCU-2	22	15
23	20	1	RM 107 - RECEPT. & BATHROOM LIGHTING	C	885 600		1075 1500	B	RM 107 - FAN	24	20
25	20	1	RM 107 - BATHROOM GFI	E	885 600		1075 1500	D	RM 107 - MICROWAVE/REFRIG.	26	20
27	15	1	RM 107 - FCU-2	G	885 600		1075 1500	F	RM 107 - COFFEE	28	20
29	20	1	RMS 125, 127, 128 - RECEPT. & LIGHT		885 600		1075 1500	H	RM 101, 103 - F.A. DEVICES	30	20
31	20	1	RM 105, 107 - F.A. DEVICES	H	885 600		1075 1500		CORR. 143 - FCU	32	15
33	20	1	DOOR CONTROLS		885 600		1075 1500		DOOR CONTROLS	34	20
35	20	1	SPARE		885 600		1075 1500		SPARE	36	20
37	20	1	SPARE		885 600		1075 1500		SPARE	38	20
39	60	1	SPACE		885 600		1075 1500		SPACE	40	60
41	60	1	SPACE		885 600		1075 1500		SPACE	42	60
TOTAL CONNECTED LOAD			32.8 KVA	TOTAL			12320	8740	11750	DEMAND LINE AMPS: NA	
ESTIMATED DEMAND LOAD			NA								

PANEL SCHEDULE											
SURFACE MOUNTED W/DOOR, LIGHTING AND APPLIANCE TYPE											
PANEL: L129G MAIN AMPS: 225 PHASE: 3 WIRES: 4 MLO (DOUBLE LUGS) MINIMUM 10,000 AIC											
CIRCUIT NO.	TRIP AMPS	NO. POLES	CIRCUIT	LOAD SERVED	CIRCUIT DESIG.	PHASE	LOAD V A	CIRCUIT DESIG.	LOAD SERVED	CIRCUIT NO.	TRIP AMPS
1	20	1	RM 201 - RECEPT., TV & LIGHTING	A	885 600	B	1075 1500	B	RM 201 - FAN	2	20
3	20	1	RM 201 - RECEPT. & BATHROOM LIGHTING	C			1200 1500	D	RM 201 - MICROWAVE/REFRIG.	4	20
5	20	1	RM 201 - BATHROOM GFI	E			1200 1500	F	RM 201 - COFFEE	6	20
7	20	1	RM 203 - RECEPT., TV & LIGHTING	A	885 600	B	1075 1500	G	RM 201 - FCU-6	8	15
9	20	1	RM 203 - RECEPT. & BATHROOM LIGHTING	C			1200 1500	B	RM 203 - FAN	10	20
11	20	1	RM 203 - BATHROOM GFI	E			1200 1500	D	RM 203 - MICROWAVE/REFRIG.	12	20
13	15	1	RM 203 - FCU-6	G	350 1500		885 600	F	RM 203 - COFFEE	14	20
15	20	1	RM 205 - RECEPT., TV & LIGHTING	A			1075 1500	B	RM 205 - FAN	16	20
17	20	1	RM 205 - RECEPT. & BATHROOM LIGHTING	C			1200 1500	D	RM 205 - MICROWAVE/REFRIG.	18	20
19	20	1	RM 205 - BATHROOM GFI	E			1200 1500	F	RM 205 - COFFEE	20	20
21	20	1	RM 207 - RECEPT., TV & LIGHTING	A	885 350	B	1075 1500	G	RM 205 - FCU-6	22	15
23	20	1	RM 207 - RECEPT. & BATHROOM LIGHTING	C			1200 1500	B	RM 207 - FAN	24	20
25	20	1	RM 207 - BATHROOM GFI	E			1200 1500	D	RM 207 - MICROWAVE/REFRIG.	26	20
27	15	1	RM 207 - FCU-6	G			885 600	F	RM 207 - COFFEE	28	20
29	20	1	RM 226 & 228 - RECEPT. & LGHT		2250 1500		2250 200	H	RM 201, 203 - F.A. DEVICES	30	20
31	30	2	CORR. 230 - FCU		2250 1500		2250 1000		SPARE	32	20
33	30	2	CORR. 230 - FCU				1000 200		SPARE	34	20
35	20	1	SPARE					H	RM 205, 207 - F.A. DEVICES	36	20
37	60	1	SPACE						SPACE	38	60
39	60	1	SPACE						SPACE	40	60
41	60	1	SPACE						SPACE	42	60
TOTAL CONNECTED LOAD				34.8 KVA	TOTAL		12240	11590	10980	DEMAND LINE AMPS: NA	
ESTIMATED DEMAND LOAD				NA							

NOTE: PANELS L126 & L129 ARE TYPICAL.

GVA ENGINEERING, LLC
PROJECT No. 9948



REVISION	DATE	BY	APPROVED
KEESLER AIR FORCE BASE AIR EDUCATION AND TRAINING COMMAND OFFICE OF CIVIL ENGINEERING			
REPAIR VAQ TYER HOUSE ELECTRICAL PANELBOARD SCHEDULES			
DATE	BY	DATE	BY
15 SEPT 2000	W. J. H. H.	15 SEPT 2000	W. J. H. H.
DATE	BY	DATE	BY
15 SEPT 2000	W. J. H. H.	15 SEPT 2000	W. J. H. H.

T:\ADP\GVA\GVA\GVA_PNL3.dwg Thu Sep 12 12:28:11 2000 JCL

PANEL SCHEDULE										
SURFACE MOUNTED W/DOOR; LIGHTING AND APPLIANCE TYPE										
PANEL: LSRG VOLTS: 120/208 MAIN AMPS: 225 PHASE: 3 WIRES: 4 MLO MINIMUM 10,000 A/C										
CIRCUIT NO.	TRIP AMPS	NO. POLES	CIRCUIT LOAD SERVED	CIRCUIT DESIG.	PHASE LOAD V.A.	CIRCUIT DESIG.	LOAD SERVED	CIRCUIT NO.	TRIP AMPS	NO. POLES
					A B C					
1	20	1	RM 501 - RECEPT., TV & LIGHTING	A	< 885	B	RM 501 - FAN	2	20	1
3	20	1	RM 501 - RECEPT. & BATHROOM LIGHTING	C	< 1075	D	RM 501 - MICROWAVE/REFRIG.	4	20	1
5	20	1	RM 501 - BATHROOM GFI	E	< 1200	F	RM 501 - COFFEE	6	20	1
7	20	1	RM 503 - RECEPT., TV & LIGHTING	A	< 885	G	RM 503 - FCU-8	8	15	1
9	20	1	RM 503 - RECEPT. & BATHROOM LIGHTING	C	< 1075	B	RM 503 - FAN	10	20	1
11	20	1	RM 503 - BATHROOM GFI	E	< 1200	D	RM 503 - MICROWAVE/REFRIG.	12	20	1
13	15	1	RM 503 - FCU-8	G	< 380	F	RM 503 - COFFEE	14	20	1
15	20	1	RM 505 - RECEPT., TV & LIGHTING	A	< 885	B	RM 505 - FAN	16	20	1
17	20	1	RM 505 - RECEPT. & BATHROOM LIGHTING	C	< 1075	D	RM 505 - MICROWAVE/REFRIG.	18	20	1
19	20	1	RM 505 - BATHROOM GFI	E	< 1200	F	RM 505 - COFFEE	20	20	1
21	20	1	RM 507 - RECEPT., TV & LIGHTING	A	< 885	G	RM 505 - FCU-8	22	15	1
23	20	1	RM 507 - RECEPT. & BATHROOM LIGHTING	C	< 1075	B	RM 507 - FAN	24	20	1
25	20	1	RM 507 - BATHROOM GFI	E	< 1200	D	RM 507 - MICROWAVE/REFRIG.	26	20	1
27	15	1	RM 507 - FCU-8	G	< 380	F	RM 507 - COFFEE	28	20	1
29	20	1	RM 526 & 528 - RECEPT. & LIGHT		< 430	H	RM 501, 503 - F.A. DEVICES	30	20	1
31	30	2	CORR. 530 - FCU		< 2280		RM 505,507 - F.A. DEVICES	32	20	1
33			CORR. 530 - FCU		< 4504		PANEL LARA	34	100	3
35	15	1	STAIR 1 - FCU-11		< 240		PANEL LARA	36		
37	20	1	SPARE		< 1984		PANEL LARA	38		
39	20	1	SPARE		< 1000		SPARE	40	20	1
41	60	1	SPARE		< 1000		SPACE	42	60	1
TOTAL CONNECTED LOAD			44.5 KVA	TOTAL	14394	17094	12928	DEMAND LINE AMPS: NA		
ESTIMATED DEMAND LOAD			NA	(NOTE: ESTIMATED DEMAND LOAD DOES NOT INCLUDE LOAD FOR SPARES)						

PANEL SCHEDULE										
SURFACE MOUNTED W/DOOR; DISTRIBUTION TYPE										
PANEL: D2RB VOLTS: 120/208 MAIN AMPS: 800 PHASE: 3 WIRES: 4 MLO MINIMUM 18,000 A/C										
CIRCUIT NO.	TRIP AMPS	NO. POLES	CIRCUIT LOAD SERVED	CIRCUIT DESIG.	PHASE LOAD V.A.	CIRCUIT DESIG.	LOAD SERVED	CIRCUIT NO.	TRIP AMPS	NO. POLES
					A B C					
1	225	3	RISER E/5		< 8760		RISER E/3	2	225	3
3			RISER E/5		< 80280		RISER E/3	4		
5			RISER E/5		< 64415		RISER E/3	6		
7	225	3	PANEL LBRA		< 21800		RISER E/4	8	300	3
9			PANEL LBRA		< 56200		RISER E/4	10		
11			PANEL LBRA		< 22370		RISER E/4	12		
13	100	3	SPACE		< 35950		SPACE	14	100	3
15			SPACE		< 23140		SPACE	16		
17			SPACE		< 86910		SPACE	18		
TOTAL CONNECTED LOAD			640.8 KVA	TOTAL	217690	210285	212793	DEMAND LINE AMPS: 600		
ESTIMATED DEMAND LOAD			216.4 KVA	(NOTE: ESTIMATED DEMAND LOAD DOES NOT INCLUDE LOAD FOR SPARES)						

PANEL SCHEDULE													
SURFACE MOUNTED W/DOOR; DISTRIBUTION TYPE													
PANEL: D2RA VOLTS: 120/208 MAIN AMPS: 800 PHASE: 3 WIRES: 4 MCB: 800A MINIMUM 18,000 A/C													
CIRCUIT NO.	TRIP AMPS	NO. POLES	CIRCUIT LOAD SERVED	CIRCUIT DESIG.	PHASE LOAD V.A.	CIRCUIT DESIG.	LOAD SERVED	CIRCUIT NO.	TRIP AMPS	NO. POLES			
					A B C								
1	225	3	RISER E/6		< 63474		RISER E/1	2	300	3			
3			RISER E/6		< 60864		RISER E/1	4					
5			RISER E/6		< 93778		RISER E/1	6					
7	225	3	SPACE		< 108575		RISER E/2	8	400	3			
9			SPACE		< 99825		RISER E/2	10					
11			SPACE		< 111075		RISER E/2	12					
13	100	3	SPACE				SPACE	14	100	3			
15			SPACE				SPACE	16					
17			SPACE				SPACE	18					
TOTAL CONNECTED LOAD			794.6 KVA	TOTAL	270487	260204	265486	DEMAND LINE AMPS: 526.4					
ESTIMATED DEMAND LOAD			189.5 KVA	(NOTE: ESTIMATED DEMAND LOAD DOES NOT INCLUDE LOAD FOR SPARES)									
* PROVIDE PANEL-MOUNTED KW/KWH METER													

PANEL SCHEDULE										
SURFACE MOUNTED W/DOOR; LIGHTING AND APPLIANCE TYPE										
PANEL: LARA VOLTS: 120/208 MAIN AMPS: 100 PHASE: 3 WIRES: 4 MLO MINIMUM 10,000 A/C										
CIRCUIT NO.	TRIP AMPS	NO. POLES	CIRCUIT LOAD SERVED	CIRCUIT DESIG.	PHASE LOAD V.A.	CIRCUIT DESIG.	LOAD SERVED	CIRCUIT NO.	TRIP AMPS	NO. POLES
					A B C					
1	20	1	ELEVATOR MACHINE ROOM		< 844		PUMP PP9	2	20	1
3	20	1	ATTIC RECEPT.		< 1080		F.A. POWER SUPPLY	4	20	1
5	15	1	PUMP PPA		< 1200		F.A. POWER SUPPLY	6	20	1
7	20	1	HVAC CONTROLS		< 500		F.A. POWER SUPPLY	8	20	1
9	20	1	EMCS PANEL		< 300		F.A. POWER SUPPLY	10	20	1
11	20	1	MACHINE ROOM - EXH. FAN		< 720		MACHINE ROOM - FCU	12	20	1
13	20	1	SPARE		< 1000		SPARE	14	20	1
15	60	1	SPACE				SPACE	16	60	1
17	60	1	SPACE				SPACE	18	60	1
19	60	1	SPACE				SPACE	20	60	1
21	60	1	SPACE				SPACE	22	60	1
23	60	1	SPACE				SPACE	24	60	1
TOTAL CONNECTED LOAD			10.5 KVA	TOTAL	4504	1908	1984	DEMAND LINE AMPS: 23.6		
ESTIMATED DEMAND LOAD			8.5 KVA	(NOTE: ESTIMATED DEMAND LOAD DOES NOT INCLUDE LOAD FOR SPARES)						

PANEL SCHEDULE										
SURFACE MOUNTED W/DOOR; LIGHTING AND APPLIANCE TYPE										
PANEL: LBRA VOLTS: 120/208 MAIN AMPS: 225 PHASE: 3 WIRES: 4 MLO (DOUBLE LUGS) MINIMUM 18,000 A/C										
CIRCUIT NO.	TRIP AMPS	NO. POLES	CIRCUIT LOAD SERVED	CIRCUIT DESIG.	PHASE LOAD V.A.	CIRCUIT DESIG.	LOAD SERVED	CIRCUIT NO.	TRIP AMPS	NO. POLES
					A B C					
1	20	1	RMS 003, 001, 010 - LIGHTING		< 1110		RMS 009, 006, 008 - LIGHTING	2	20	1
3	20	1	RMS 017, 015 - LIGHTING		< 1000		RM 007 - LIGHTING	4	20	1
5	20	1	RMS 002, 005 - LIGHTING		< 1080		RMS 012, 011 - LIGHTING	6	20	1
7	20	1	RMS 018, 018 - LIGHTING		< 1200		RMS 013, 019 - LIGHTING	8	20	1
9	20	1	VENDING MACHINE		< 900		RM 007 - REFRIGERATOR	10	20	1
11	20	1	VENDING MACHINE		< 1200		RM 007 - MICROWAVE	12	20	1
13	20	1	VENDING MACHINE		< 1200		RM 007 - COFFEE	14	20	1
15	20	1	RM 009 - RECEPT.		< 800		RM 009 - RECEPT.	16	20	1
17	20	1	RM 009 - RECEPT.		< 1200		RM 009 - RECEPT.	18	20	1
19	20	1	RM 009 - RECEPT.		< 500		ELECTRIC WATER COOLER	20	20	1
21	20	1	RM 009 - RECEPT.		< 1280		RMS 007, 006 - RECEPT.	22	20	1
23	20	1	RM 009 - RECEPT.		< 1200		RM 008 - RECEPT.	24	20	1
25	20	1	RMS 017, 018, 016, 013 - RECEPT.		< 900		RM 005 - GFI	26	20	1
27	20	1	RMS 010, 012, 001, 001 - RECEPT.		< 1280		RM 002 - GFI	28	20	1
29	20	1	RM 014, 019 - RECEPT.		< 1200		WASHER	30	20	1
31	20	1	WASHER		< 1200		WASHER	32	20	1
33	20	1	WASHER		< 1200		WASHER	34	20	1
35	20	1	WASHER		< 1200		WASHER	36	20	1
37	20	1	WASHER		< 1200		WASHER	38	20	1
39	20	1	WASHER		< 1200		WASHER	40	20	1
41	20	1	WASHER		< 1200		CLOTHES DRYER	42	20	1
43	20	1	WASHER		< 1200		CLOTHES DRYER	44	20	1
45	20	1	WASHER		< 1200		CLOTHES DRYER	46	20	1
47	15	1	UH-B1		< 400		CLOTHES DRYER	48	20	1
49	20	1	ELEVATOR PIT		< 1200		CLOTHES DRYER	50	20	1
51	30	1	STREET LIGHTING		< 2000		CLOTHES DRYER	52	20	1
53	30	1	STREET LIGHTING		< 2000		CLOTHES DRYER	54	20	1
55	20	1	SPARE		< 1000		BACKBOARD B-1	56	20	1
57	20	1	SURGE PROTECTOR		< 200		WIREWAY FOR CHILLERS & RECEPT.	58	20	1
59	20	1	OVERHEAD DOORS		< 1000		HVAC CONTROLS	60	20	1
61	20	1	EXISTING TIME SWITCH		< 200		TIME SWITCH FOR STAIR & CANOPY LTG.	62	20	1
63	20	1	SPARE		< 1000		SPARE	64	20	1
65	60	1	SPACE				SPACE	66	60	1
67	60	1	SPACE				SPACE	68	60	1
69	60	1	SPACE				SPACE	70	60	1
71	60	1	SPACE				SPACE	72	60	1
TOTAL CONNECTED LOAD			70.9 KVA	TOTAL	21600	26370	23140	DEMAND LINE AMPS: 178		
ESTIMATED DEMAND LOAD			64.0 KVA	(NOTE: ESTIMATED DEMAND LOAD DOES NOT INCLUDE LOAD FOR SPARES)						

GVA ENGINEERING, L.L.C.
PROJECT No. 9948

E12

PREPARED BY	DATE	DESIGNED BY	APPROVED BY
UNITED STATES AIR FORCE			
KEESLER AIR FORCE BASE			
OFFICE OF CHIEF ENGINEER			
REPAIR VAQ TYER HOUSE			
ELECTRICAL			
PANELBOARD SCHEDULES			
DESIGNED BY	DATE	DESIGNED BY	DATE
LEON R. PEREZ	15 SEPT 2000	LEON R. PEREZ	15 SEPT 2000
PROF. ENGINEER		PROF. ENGINEER	
STATE OF LOUISIANA		STATE OF LOUISIANA	
REG. NO. 1732		REG. NO. 1732	
PROF. ENGINEER		PROF. ENGINEER	
STATE OF LOUISIANA		STATE OF LOUISIANA	
REG. NO. 1732		REG. NO. 1732	
PROF. ENGINEER		PROF. ENGINEER	
STATE OF LOUISIANA		STATE OF LOUISIANA	
REG. NO. 1732		REG. NO. 1732	
PROF. ENGINEER		PROF. ENGINEER	
STATE OF LOUISIANA		STATE OF LOUISIANA	
REG. NO. 1732		REG. NO. 1732	
PROF. ENGINEER		PROF. ENGINEER	
STATE OF LOUISIANA		STATE OF LOUISIANA	
REG. NO. 1732		REG. NO. 1732	
PROF. ENGINEER		PROF. ENGINEER	
STATE OF LOUISIANA		STATE OF LOUIS	

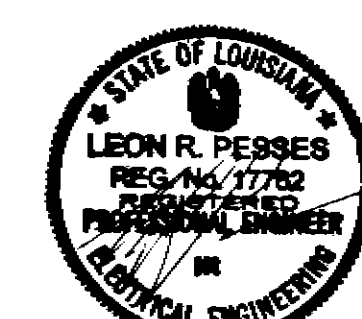
f:\CADPROG\9948\1E_PNL 4.dwg Tue Sep 12 12:31:20 2000 JCL

PANEL SCHEDULE									
SURFACE MOUNTED W/DOOR; DISTRIBUTION									
PANEL: MDP * VOLTS: 277/480									
MAIN AMPS: 1200									
PHASE: 3									
WIRES: 4									
MCB: 1200									
MINIMUM 22,000 AC									
CIRC NO	TRIP AMPS	NO	CIRCUIT	LOAD SERVED	CIRCUIT	LOAD SERVED	CIRC NO	TRIP AMPS	NO
1	15	3	AHU-B1				2	15	3
3			AHU-B1				4		
5			AHU-B1				6		
7	15	3	BCU-L1				8	600	3
9			BCU-L1				10		
11			BCU-L1				12		
13	100	3	PANEL DP1A				14	400	3
15			PANEL DP1A				16		
17			PANEL DP1A				18		
19	20	3	PP-5 & 6				20	20	3
21			PP-5 & 6				22		
23			PP-5 & 6				24		
25	225	3	DPMA				26	100	3
27			DPMA				28		
29			DPMA				30		
31	100	3	SPACE				32	100	3
33			SPACE				34		
35			SPACE				36		
37	100	3	SPACE				38	225	3
39			SPACE				40		
41			SPACE				42		
TOTAL CONNECTED LOAD				800.1 KVA	TOTAL		268174 265974 265974		
ESTIMATED DEMAND LOAD				679.0 KVA	(NOTE: ESTIMATED DEMAND LOAD DOES NOT INCLUDE LOAD FOR SPARES)		DEMAND LINE AMPS: B17		
* PROVIDE PANEL-MOUNTED KW/KWH METER.									

PANEL SCHEDULE									
SURFACE MOUNTED W/DOOR; DISTRIBUTION (FUSIBLE)									
PANEL: DEJA VOLTS: 277/480									
MAIN AMPS: 225									
PHASE: 3 WIRES: 4 MLO MINIMUM 100,000 AC									
CIRCUIT NO.	TRIP	NO.	CIRCUIT	LOAD SERVED	CIRCUIT	LOAD SERVED	CIRCUIT	TRIP	NO.
NO.	AMPS	POLES	DESIG.		DESIG.		DESIG.	AMPS	POLES
1	15	3	PP1		PP2			2	15
3			PP1		PP2			4	
5			PP1		PP2			6	
7	20	3	HWP-1		CWP-1			8	40
9			HWP-1		CWP-1			10	
11			HWP-1		CWP-1			12	
13	40	3	CWP-2		B-1			14	15
15			CWP-2		B-1			16	
17			CWP-2		B-1			18	
19	30	3	SPARE		SPARE			20	60
21			SPARE		SPARE			22	
23			SPARE		SPARE			24	
25	30		SPACE		SPACE			26	30
27			SPACE		SPACE			28	
29			SPACE		SPACE			30	
TOTAL CONNECTED LOAD				57.9 KVA	TOTAL		19307	19307	19307
ESTIMATED DEMAND LOAD				48.9 KVA	(NOTE: ESTIMATED DEMAND LOAD DOES NOT INCLUDE LOAD FOR SPARES)		DEMAND LINE AMPS: 58.9		

PANEL SCHEDULE										2-SECTION PANEL					
SURFACE MOUNTED W/DOOR; DISTRIBUTION															
PANEL: DDA VOLTS: 277/480															
MAIN AMPS: 225										PHASE: 3 WIRES: 4 MLO MINIMUM 10,000 AC					
CIRCUIT NO.	TRIP AMPS	NO. POLES	CIRCUIT	LOAD SERVED	CIRCUIT DESIG.	PHASE	LOAD V	A	CIRCUIT DESIG.	LOAD SERVED	CIRCUIT NO.	TRIP AMPS	NO. POLES		
1	30	3	EDH-OA1		5333	B			EDH-OA2		2	30	3		
3			EDH-OA1		5333				EDH-OA2		4				
5			EDH-OA1		5333				EDH-OA2		6				
7	15	3	AHU-OA1		2018				AHU-OA2		8	15	3		
9			AHU-OA1		2018				AHU-OA2		10				
11			AHU-OA1		2018				AHU-OA2		12				
13	15	3	BCU-A1		798				BCU-A2		14	15	3		
15			BCU-A1		798				BCU-A2		16				
17			BCU-A1		798				BCU-A2		18				
19	15	3	BCU-A3		798				EDH-OA3		20	40	3		
21			BCU-A3		7187				EDH-OA3		22				
23			BCU-A3		7187				EDH-OA3		24				
25	15	3	AHU-OA3		2018				EF-A2		26	15	3		
27			AHU-OA3		558				EF-A2		28				
29			AHU-OA3		558				EF-A2		30				
31	15	3	EF-A3		558				EF-A1		32	15	3		
33			EF-A3		558				EF-A1		34				
35			EF-A3		558				EF-A1		36				
37	40*	3	ELEVATOR CONTROLLER		5577				ELEVATOR CONTROLLER		38	40*	3		
39			ELEVATOR CONTROLLER		5577				ELEVATOR CONTROLLER		40				
41			ELEVATOR CONTROLLER		5577				ELEVATOR CONTROLLER		42				
43	20	1	ATTIC LIGHTING		1200				PUMP PP3		44	15	3		
45	20	1	SPARE		425				PUMP PP3		46				
47	20	1	SPARE		1000				PUMP PP3		48				
49	100	3	SPACE		425				SPACE		50	100	3		
51			SPACE						SPACE		52				
53			SPACE						SPACE		54				
55	100	1	SPACE						SPACE		56	100	1		
57	100	1	SPACE						SPACE		58	100	1		
59	100	1	SPACE						SPACE		60	100	1		
TOTAL CONNECTED LOAD										123.8 KVA	TOTAL	42728	40528	40528	DEMAND LINE AMPS: 148.8
ESTIMATED DEMAND LOAD										121.8 KVA	(NOTE: ESTIMATED DEMAND LOAD DOES NOT INCLUDE LOAD FOR SPARES)				* WITH SHUNT TRIP

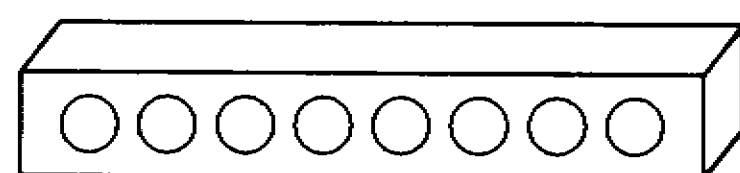
GVA ENGINEERING, LLC
PROJECT No. 9948



REVISION		DATE	BY	APPROVED
UNITED STATES AIR FORCE				
KEESLER AIR FORCE BASE				
OFFICE OF CHIEF ENGINEER				
REPAIR VAQ TYER HOUSE				
ELECTRICAL				
PANELBOARD SCHEDULES				
DESIGNED BY	CHECKED BY	DATE	PROJECT NO.	DATE
15 SEPT 2000	15 SEPT 2000	15 SEPT 2000	9948	15 SEPT 2000

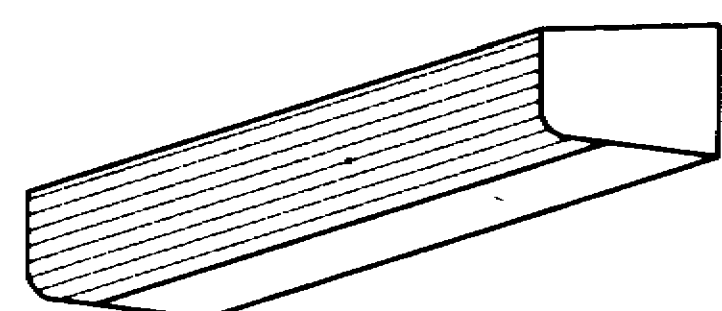
DRAWING NUMBER
470-16
72 OF 73

FIXTURES F10, F10A & F10B



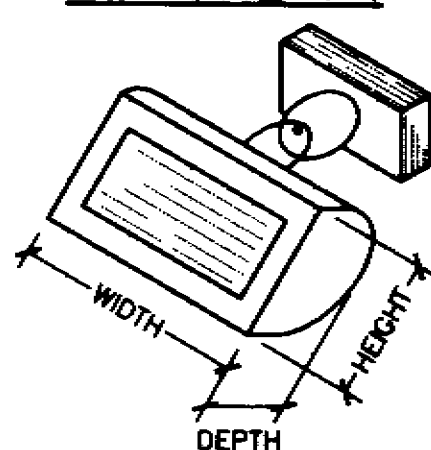
- NOTES:
1. LIGHT BAR - 4 1/2" [114] HIGH, 2 1/8" [54] DEEP.
 2. CHROME FINISH.
 3. MEDIUM BASE SOCKETS WITH CHROME SLEEVES.
 4. F10 - 48" [1219] LONG WITH 8 LAMPS.
 5. F10A - 36" [914] LONG WITH 6 LAMPS.
 6. F10B - 24" [610] LONG WITH 3 LAMPS.

FIXTURE F14



- NOTES:
1. FLANGED SHATTER RESISTANT, WHITE DIFFUSER.
 2. WHITE ENAMEL FINISH.
 3. HIGH POWER FACTOR BALLAST.
 4. MOUNT UNDER CABINET.
 5. 24" [610] LONG x 1 13/16" [46] DEEP x 5 1/4" [133] WIDE WITH 1-17W TB FLUORESCENT LAMP.

FIXTURE F4



- NOTES:
1. ADJUSTABLE FLOOD - 8 1/2" [216] HIGH, 14" [356] WIDE, 6 3/4" [171] DEEP.
 2. ONE PIECE DIE CAST ALUMINUM CYLINDRICAL SHAPED HOUSING.
 3. DIE CAST ALUMINUM SWIVEL WITH INTERNAL LOCKING TEETH PROVIDING 7.5° ADJUSTMENT INTERVALS.
 4. TEMPERED GLASS LENS AND GASKET.
 5. U.L. LISTED FOR WET LOCATIONS.
 6. IES 6x6 DISTRIBUTION.
 7. FIXTURE SHALL BE MOUNTED ON SURFACE BOX ON BEAM.

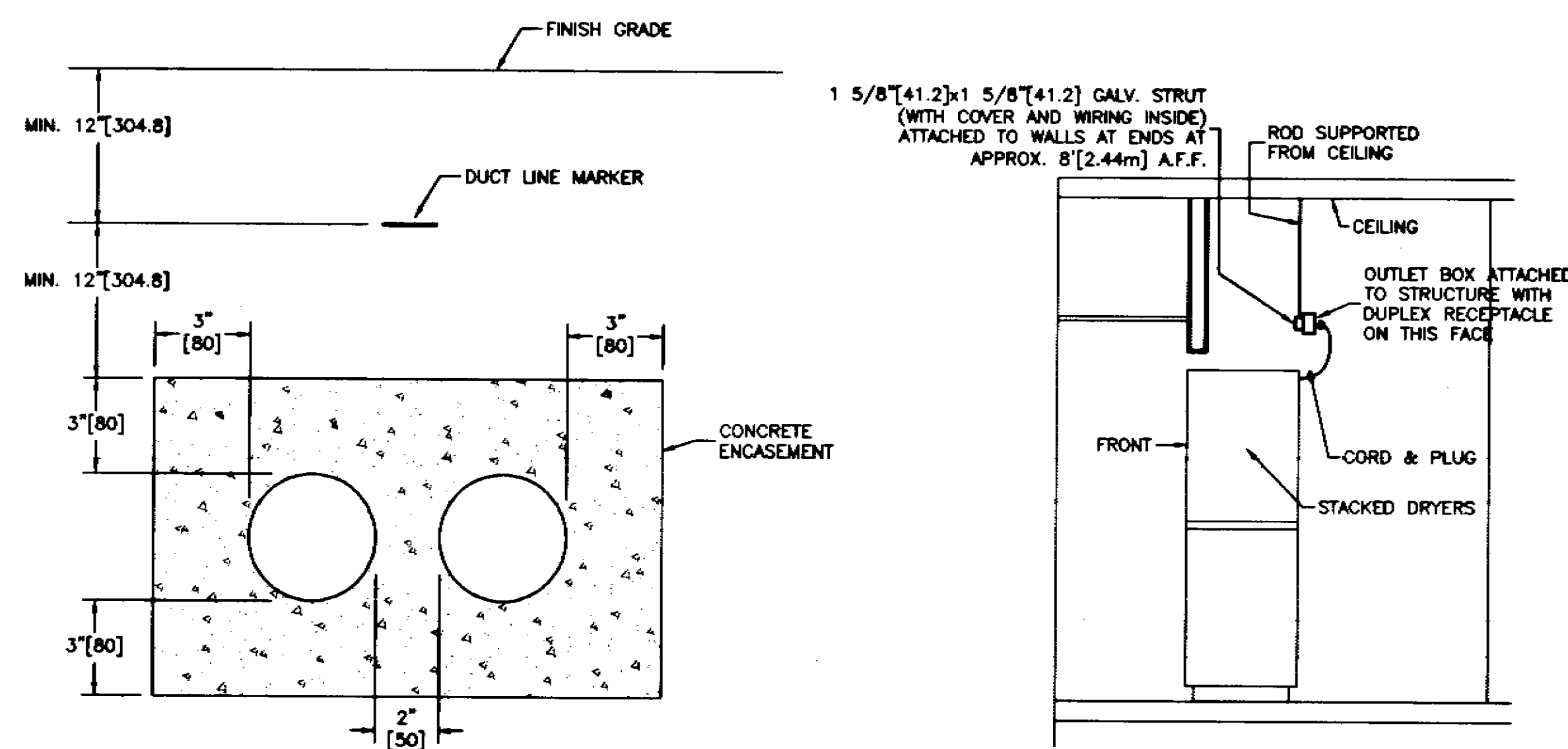
LIGHTING FIXTURES SCHEDULE

CONTRACT DRAWING MARK	DET. NO. 40-06-04	LAMP			FIXTURE VOLTAGE	NOTES
		TYPE	NUMBER	WATTS		
F1	SEE FIXTURE DESCRIPTIONS ON THIS SHEET	COMPACT FLUORESCENT	4	13	120	
F2	SEE FIXTURE DESCRIPTIONS ON THIS SHEET	INCANDESCENT	2	7.2	120	
F3	SEE FIXTURE DESCRIPTIONS ON THIS SHEET	COMPACT FLUORESCENT	2	13	120	
F4	SEE FIXTURE SKETCH ON THIS SHEET	MH	1	100	120	
F5	232	38	TB	2	32	120 WITH EMERGENCY BATTERY PACK
F5A	232	38	TB	2	32	120 FIXTURE TO BE WALL MOUNTED 7'-6" [2.3m] A.F.F.
F6	SEE FIXTURE DESCRIPTIONS ON THIS SHEET	CONCEALED LED LAMP ASSEMBLY	1	2 (MAX.)	120	
F6A	SEE FIXTURE DESCRIPTIONS ON THIS SHEET	CONCEALED LED LAMP ASSEMBLY	1	2 (MAX.)	120	
F7	SEE FIXTURE DESCRIPTIONS ON THIS SHEET	CONCEALED LED LAMP ASSEMBLY	2	2 (MAX.)	120	
F7A	SEE FIXTURE DESCRIPTIONS ON THIS SHEET	COMPACT FLUORESCENT	2	2 (MAX.)	120	
F8	SEE FIXTURE DESCRIPTIONS ON THIS SHEET	COMPACT FLUORESCENT	1	22	120	
F9	SEE FIXTURE DESCRIPTIONS ON THIS SHEET	COMPACT FLUORESCENT	2	9	120	
F10	SEE FIXTURE SKETCH ON THIS SHEET	G25 WHITE MED. BASE	8	40	120	
F10A	SEE FIXTURE SKETCH ON THIS SHEET	G25 WHITE MED. BASE	6	40	120	
F10B	SEE FIXTURE SKETCH ON THIS SHEET	G25 WHITE MED. BASE	4	40	120	
F11	SEE FIXTURE DESCRIPTIONS ON THIS SHEET	COMPACT FLUORESCENT	2	13	120	
F12	SEE FIXTURE DESCRIPTIONS ON THIS SHEET	COMPACT FLUORESCENT	2	13	120	
F13	21383	25	TB	2	32	120
F14	SEE FIXTURE SKETCH ON THIS SHEET	TB	1	17	120	
F15	206B1	20	TB	3	32	120 *
F15A	206C1	20	TB	4	32	120 *
F15B	206A1	20	TB	2	32	120 *
F15C	206A1	20	TB (U-LAMP)	2	31	120 * 2' [610] x 2' [610] FIXTURE
F15D	206A1A	20	TB	2	32	120 * WITH EMERGENCY BATTERY PACK
F15E	206B1A	20	TB	3	32	120 * WITH EMERGENCY BATTERY PACK
F16	218	30	TB	2	32	120 SUSPENDED 8'-0" [2.44m] A.F.F.

LIGHTING FIXTURES SCHEDULE

CONTRACT DRAWING MARK	DET. NO. 40-06-04	LAMP			FIXTURE VOLTAGE	NOTES
		TYPE	NUMBER	WATTS		
F16A	218	30	TB	2	32	120 WITH EMERGENCY BATTERY PACK, SUSPENDED 8'-0" [2.44m] A.F.F.
F17	220B	31	TB	2	32	120 SUSPENDED 8'-0" [2.44m] A.F.F.
F17A	220B	31	TB	2	32	120 WITH EMERGENCY BATTERY PACK, SUSPENDED 8'-0" [2.44m] A.F.F.
F17B	220B	31	TB	2	32	277 MOUNTED ON BOTTOM OF PIPE RACK
F17C	220B	31	TB	2	32	277 WITH EMERGENCY BATTERY PACK, MOUNT ON BOTTOM OF PIPE RACK
F18	SEE FIXTURE DESCRIPTIONS ON THIS SHEET	COMPACT FLUORESCENT	2	28	120	
F19	240B	41	TB (U-LAMP)	2	31	120 *
F19A	240B1	41	TB (U-LAMP)	2	31	120 * WITH EMERGENCY BATTERY PACK
F20	234C	39	TB	4	32	120 *
F21	232	38	TB	2	32	120
F21A	232	38	TB	2	32	120 WITH EMERGENCY BATTERY PACK
F22	SEE FIXTURE DESCRIPTIONS ON THIS SHEET	COMPACT FLUORESCENT	1	22	120	
F23	SEE FIXTURE DESCRIPTIONS ON THIS SHEET	COMPACT FLUORESCENT	2	18	120	
F24	206B1	20	TB	3	32	120 **
F24A	206B1A	20	TB	3	32	120 ** WITH EMERGENCY BATTERY PACK
F25	240B	41	TB (U-LAMP)	2	31	120 **
F25A	240B1	41	TB (U-LAMP)	2	31	120 ** WITH EMERGENCY BATTERY PACK

LIGHTING FIXTURES SCHEDULE NOTES:
 COLOR OF LAMPS FOR TB'S AND COMPACT FLUORESCENT LAMPS SHALL BE 3500 DEGREES K.
 * LATIN (GRID) TYPE.
 ** FLANGED TYPE.



2 DUCT BANK DETAIL
NOT TO SCALE

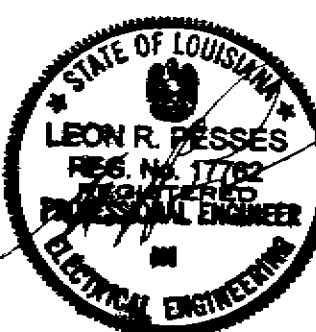
DRYER OUTLET DETAIL (BASEMENT)
NOT TO SCALE

FIXTURE DESCRIPTIONS:

- F1 GROSS CHANDELIER #014530-24-PL-120-W-SC/MB OR APPROVED EQUAL, SURFACE MOUNTED HALF SPHERE, WHITE OPAL DIFFUSER, TWO SATIN CHROME TRIM RINGS WITH BLACK ACCENT CLIPS, WITH 4 - 13 WATT COMPACT FLUORESCENT LAMPS, 120V.
- F2 DUAL-LITE SERIES EDC-204-V OR APPROVED EQUAL, TWIN-HEAD EMERGENCY BATTERY FIXTURE, WALL MOUNTED, WITH ARCHITECTURALLY PLEASING SWIVEL TYPE CYLINDRICAL HEADS (WHITE FINISH), WITH TEST SWITCH, PILOT LIGHT, SOLID STATE CHARGER, MAINTENANCE FREE BATTERY, CHARGE INDICATOR, VOLT METER, 120V, WITH 2 - 7.2 WATT LAMPS, 3-YEAR FULL WARRANTY.
- F3 GROSS CHANDELIER #G-09226-PC-P27-W-120 OR APPROVED EQUAL, WALL MOUNTED HALF CYLINDER, WHITE OPAL DIFFUSER, POLISHED CHROME ACCENT BANDS, WITH 2 - 13 WATT COMPACT FLUORESCENT LAMPS, 120V.
- F6 LITHONIA SERIES LES-ELN OR APPROVED EQUAL, TOP MOUNTED EXIT FIXTURE, SINGLE FACE, DIE-CAST HOUSING, WITH MATTE BLACK FINISH, BRUSHED ALUMINUM STENCIL FACE, RED LETTERS, BATTERY BACKUP WITH MAINTENANCE FREE Ni-CAD BATTERY, WITH CONCEALED LED LAMPS, 120V.
- F6A SAME AS F6 EXCEPT WITH DIRECTIONAL ARROWS AS INDICATED ON FLOOR PLANS.
- F7A SAME AS F6 EXCEPT DOUBLE FACE.
- F7B SAME AS F7 EXCEPT WITH DIRECTIONAL ARROWS AS INDICATED ON FLOOR PLANS.
- F8 HALO SERIES H2432 OR APPROVED EQUAL, JELLY JAR TYPE WALL MOUNTED FIXTURE, ENCLOSED AND GASKETED, CAST ALUMINUM WALL BRACKET WITH BRUSHED OR SATIN ALUMINUM FINISH WITH CLEAR ACRYLIC LACQUER PROTECTIVE COATING, WHITE OPAL TEMPERED GLASS GLOBE THAT SCREWS INTO WALL BRACKET, 1 - 22 WATT COMPACT FLUORESCENT LAMP, 120V.
- F9 RECESSED SHOWER LIGHT, LAMP LOCATIONS LISTED, STEEL HOUSING WITH WHITE ENAMEL FINISH, DROP OPAL GLASS LENS (ROUND), GASKETED, SATIN ALUMINUM TRIM FLUORESCENT LAMPS, 120V.
- F11 CAPRI SERIES FRD101C OR APPROVED EQUAL, SURFACE DRUM FIXTURE, ACRYLIC DIFFUSER, DIE-FORMED STEEL CANOPY WITH BAKED WHITE ENAMEL FINISH, WITH 2 - 13 WATT COMPACT FLUORESCENT LAMPS, 120V.
- F12 SAME AS F3.
- F18 RECESSED OPEN DOWNLIGHT, 6" [152] APERTURE, CLEAR SPECULAR REFLECTOR, STEEL HOUSING WITH BAKED WHITE ENAMEL FINISH, SATIN ALUMINUM TRIM RING, WITH 2 - 28 WATT COMPACT FLUORESCENT LAMPS (HORIZONTAL), 120V.
- F22 SAME AS F8.
- F23 RECESSED OPEN DOWNLIGHT, 8" [203] APERTURE, CLEAR SPECULAR REFLECTOR, STEEL HOUSING WITH BAKED WHITE ENAMEL FINISH, SATIN ALUMINUM TRIM RING WITH CLEAR ACRYLIC LACQUER PROTECTIVE COATING, WITH 2 - 18 WATT COMPACT FLUORESCENT LAMPS (HORIZONTAL), 120V.

SYMBOL SCHEDULE

- FLUORESCENT FIXTURE, SURFACE OR SUSPENDED.
- FLUORESCENT FIXTURE, RECESSED.
- COMPACT FLUORESCENT, INCANDESCENT OR H.I.D. FIXTURE, RECESSED.
- COMPACT FLUORESCENT, INCANDESCENT OR H.I.D. FIXTURE, WALL MOUNTED.
- COMPACT FLUORESCENT, INCANDESCENT, OR HID FIXTURE, SURFACE MOUNTED OR SUSPENDED.
- TWIN-HEAD EMERGENCY BATTERY FIXTURE.
- "E" IN FIXTURE SYMBOL INDICATES THAT IT HAS BATTERY BACKUP FEATURE.
- EXIT LIGHT, TOP MOUNTED, SINGLE FACE (SURFACE OR SUSPENDED).
- SAME AS EXCEPT WITH DIRECTIONAL ARROW.
- SAME AS EXCEPT DOUBLE FACE WITH DIRECTIONAL ARROWS.
- 20A/1P WALL SWITCH (WHITE COLOR), SUBSCRIPT INDICATES OUTLET CONTROLLED, AT 48" [1219] A.F.F.
- 20A/2P, 3-WIRE, 125V, GROUNDING TYPE DUPLEX RECEPTACLE, NEMA 5-20R, WHITE COLOR 18" [457] A.F.F. UNLESS NOTED OTHERWISE.
- SAME AS EXCEPT MOUNTED ABOVE COUNTER AT 36" [914] A.F.F.
- SAME AS EXCEPT WITH GROUND FAULT INTERRUPTER.
- SAME AS GFI EXCEPT MOUNTED ABOVE COUNTER AT 36" [914] A.F.F.
- SAME AS EXCEPT MOUNTED AS REQUIRED FOR ELECTRIC WATER COOLER.
- SAME AS GFI EXCEPT WEATHERPROOF.
- SPECIAL RECEPTACLE FOR OVEN/RANGE (50A, 3P, 4W, 125/250V, NEMA 14-50R). PROVIDE CORD AND MATCHING PLUG ON OVEN/RANGE.
- JUNCTION BOX 4 11/16" [119] OR LESS, WALL MOUNTED.
- JUNCTION BOX, LARGER THAN 4 11/16" [119].
- SURF. FLUSH LIGHTING PANELBOARD.
- DISTRIBUTION PANELBOARD.
- MOTOR.
- ELECTRIC DUCT HEATER.
- SAFETY SWITCH.
- MAGNETIC STARTER.
- FAN, 52" [1321], 4 BLADE, BROWN BLADES AND HOUSING, SHALLOW GLOBE (OPAL) LIGHT KIT (MAX 12" [305] HIGH) WITH TWO INCANDESCENT LAMPS, 3-SPEED PULL CHAIN, AND LIGHT KIT ON/OFF PULL CHAIN. (WALL SWITCH SHALL CONTROL LIGHT KIT).
- COMMUNICATION WALL OUTLET WITH SINGLE GANG MODULAR PLATE AND JACK(S). "G" INDICATES GOVERNMENT TELEPHONE. "P" INDICATES PROTELE TELEPHONE. "D" INDICATES DATA. TELEPHONE JACKS SHALL BE RJ11. DATA JACKS SHALL BE RJ45. PROVIDE A SEPARATE CABLE FOR EACH JACK IN A COMMON 3/4" [19] CONCEALED RACEWAY FROM OUTLET BOX TO BACKBOARD IN THE CLOSET ON THE ASSOCIATED FLOOR. (SEE RISER DIAGRAM).
- SAME AS EXCEPT MOUNTED ABOVE COUNTER AT 48" [1219] A.F.F.
- CABLE TV WALL OUTLET WITH 75 OHM, F-CONNECTOR (ANODIZED BRASS, BERYLLIUM COPPER, OR PHOSPHORUS BRONZE) ON FLUSH PLATE WITH ONE RG-6 CABLE IN 1/2" [13] CONCEALED RACEWAY TO BACKBOARD IN THE CLOSET ON THE ASSOCIATED FLOOR. (SEE RISER DIAGRAM).
- FIRE ALARM PULL STATION.
- FIRE ALARM AUDIO/VISUAL SIGNAL UNIT, WALL MOUNTED. (STROBE INTENSITY SHALL BE 110 CANDELA).
- FIRE ALARM AUDIO SIGNAL UNIT, WALL MOUNTED.
- SMOKE DETECTOR.
- SMOKE DETECTOR, SELF CONTAINED TYPE WITH AUDIBLE SIGNAL.
- HEAT DETECTOR.
- DUCT SMOKE DETECTOR (SHALL BE LOCATED AT LEAST 6-10 DUCT WIDTHS FROM A DUCT BEND OR TURN AND SHALL BE COMPLETELY ACCESSIBLE AFTER CONSTRUCTION). ALSO, PROVIDE A REMOTE INDICATOR AT LOCATION AS DIRECTED BY CONTRACTING OFFICER AND PROVIDE WIRING IN RACEWAY TO DUCT SMOKE DETECTOR).
- FIRE ALARM VISUAL SIGNAL UNIT, WALL MOUNTED (STROBE INTENSITY SHALL BE 110 CANDELA).
- FIRE ALARM CONTROL MODULE.
- SPRINKLER SYSTEM VALVE SUPERVISORY SWITCH (FURNISHED UNDER DIVISION 15). PROVIDE A FIRE ALARM MONITOR MODULE AND CONNECT.
- SPRINKLER SYSTEM FLOW SWITCH (FURNISHED UNDER DIVISION 15). PROVIDE A FIRE ALARM MONITOR MODULE AND CONNECT.
- WIRING IN RACEWAY CONCEALED OVERHEAD OR IN WALLS (CROSSBARS DENOTE NUMBER OF CONDUCTORS WHEN MORE THAN TWO. REQUIRED GREEN EQUIPMENT GROUNDING CONDUCTOR IS NOT SHOWN AS A CROSSBAR). ARROWS INDICATE NUMBER OF CIRCUITS.
- WIRING IN RACEWAY CONCEALED IN OR UNDER FLOOR OR UNDERGROUND.
- WIRING IN RACEWAY RUN EXPOSED.
- EXISTING WIRING IN RACEWAY INSTALLED CONCEALED OVERHEAD OR IN WALL.
- EXISTING WIRING IN RACEWAY INSTALLED CONCEALED OVERHEAD OR IN WALLS. REMOVE WIRING AND EXPOSED RACEWAY.
- RISER DESIGNATION.
- CABLE TRAY.



GVA ENGINEERING, L.L.C.
PROJECT No. 9948

E14

REVISION	DATE	BY	APPROVED
UNITED STATES AIR FORCE			
OFFICE OF CHIEF ENGINEER			
KEESLER AIR FORCE BASE			
REPAIR VAQ TYER HOUSE			
ELECTRICAL			
SCHEDULES			
DATE	BY	DATE	BY
15 SEPT 2000	MADE 01-1000	SHEET 73 OF 73	