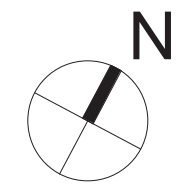


1 ENLARGED POC MECHANICAL, BASEMENT FLOOR - AREA 2  
3/16" = 1'-0"



BASEMENT KEY PLAN - AREA 2  
1" = 100'-0"

VA CONTRACT NO: 36C24519C0171

|                                        |            |
|----------------------------------------|------------|
| BID DOCUMENTS SUBMITTAL                | 11/24/2021 |
| 100% CONSTRUCTION DOCUMENTS SUBMISSION | 07/23/2021 |
| 95% CONSTRUCTION DOCUMENTS SUBMISSION  | 02/12/2021 |
| 60% DESIGN DEVELOPMENT SUBMISSION      | 09/11/2020 |
| 30% SCHEMATIC DESIGN SUBMISSION        | 05/24/2020 |
| Revisions:                             | Date:      |

CONSULTANT

**ckc** COMMERCIAL KITCHEN CONSULTING

747 CONKLIN ROAD,  
BINGHAMTON, NY 13903  
W: www.ckc-llc.net  
E: mberard  
T: 607-217-5389

ARCHITECT/ENGINEER OF RECORD

**Bancroft**

BANCROFT ARCHITECTS + ENGINEERS

700 Nicholas Blvd, Suite 300  
Eik Grove Village, IL 60007  
T: 847.952.9362 F: 847.952.9403  
www.bancroft-a-e.com

STAMP

Office of Construction and Facilities Management

**VA** U.S. Department of Veterans Affairs

Drawing Title  
FOOD SERVICE - ENLARGED HVAC POINT OF CONNECTIONS PLAN - AREA 2

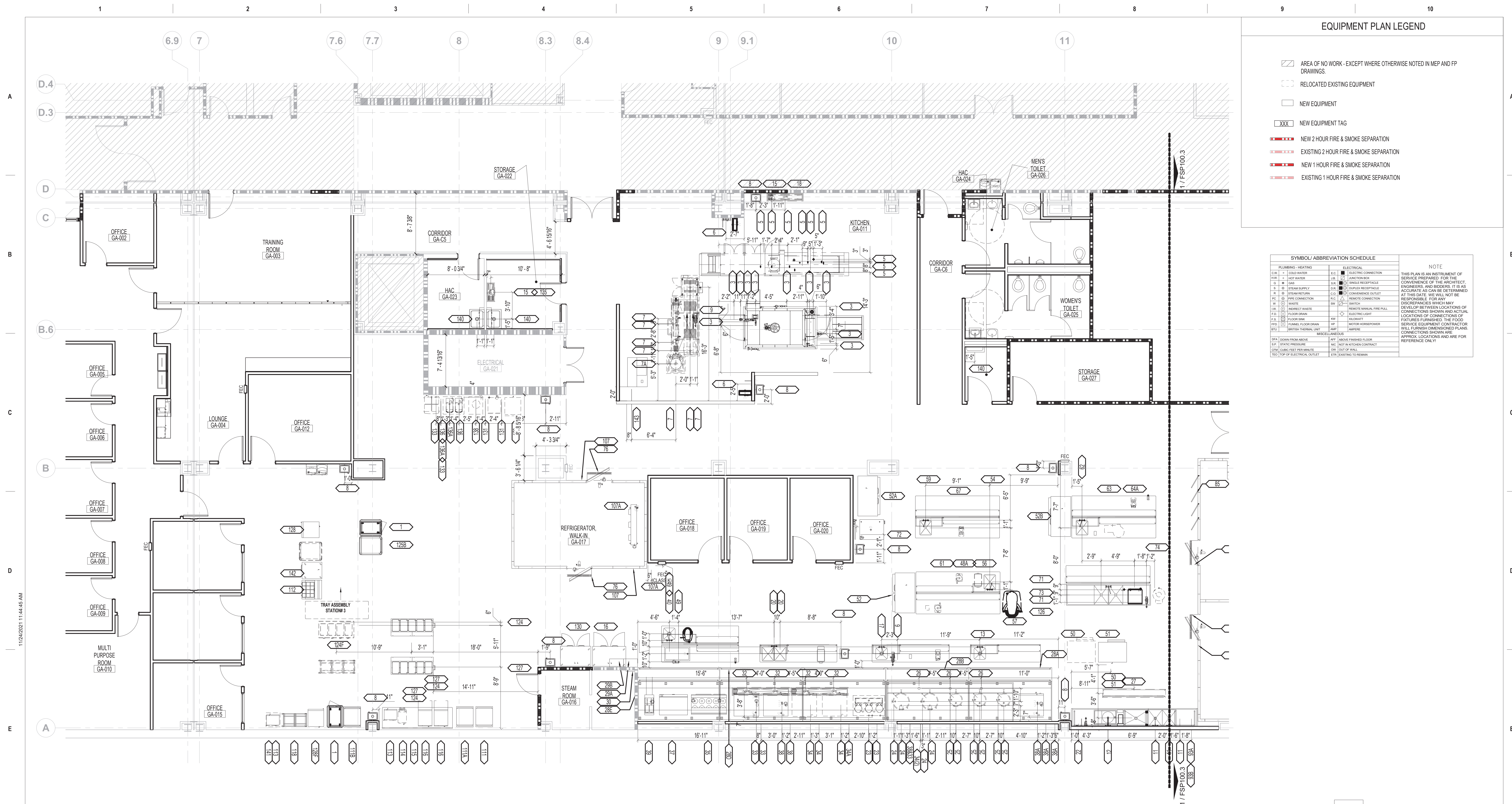
Approved: Project Director

Phase  
BID DOCUMENTS SUBMITTAL

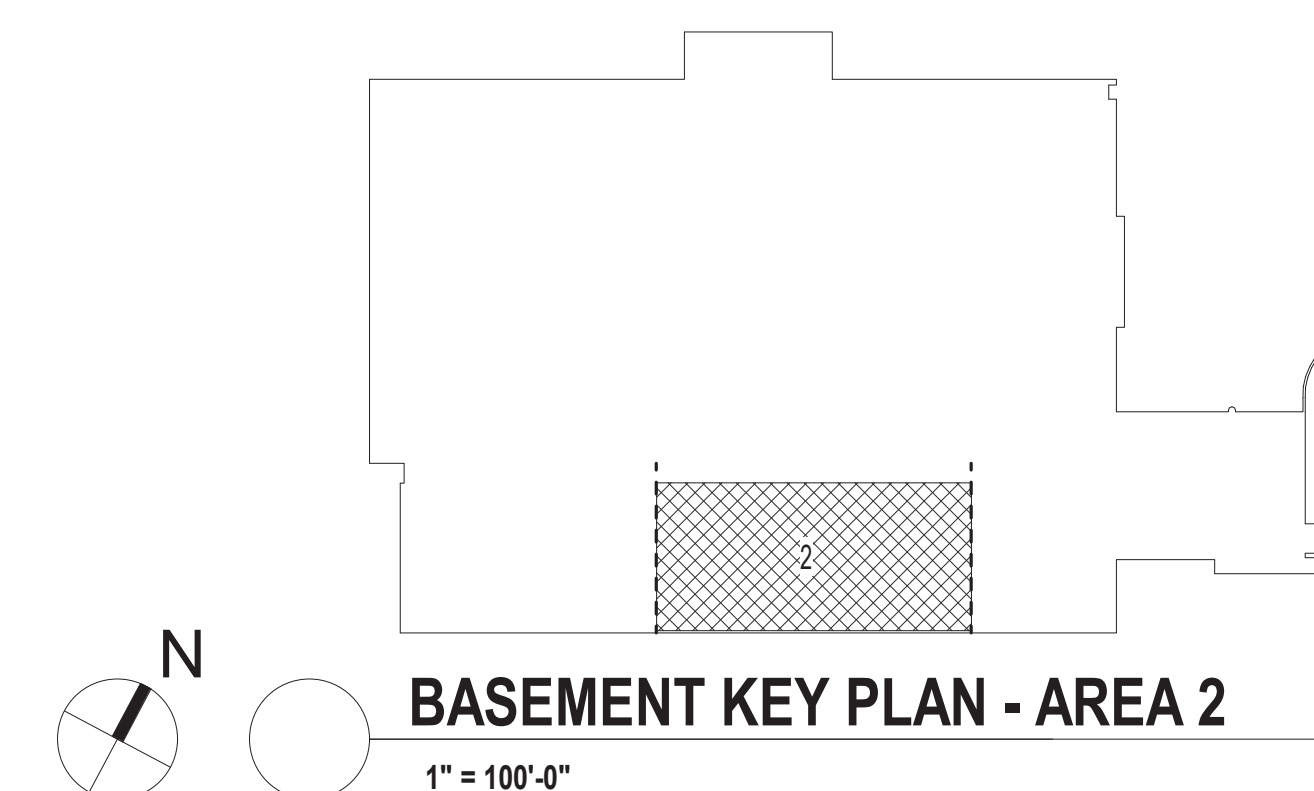
FULLY SPRINKLERED



|                                                                       |                                                        |
|-----------------------------------------------------------------------|--------------------------------------------------------|
| Project Title<br>RENOVATE/UPGRADE NFS KITCHEN - BUILDING 500 BASEMENT | Project Number<br>613-19-103<br>Building Number<br>500 |
| Location<br>510 BUTLER AVENUE, MARTINSBURG, WV 25405                  | Drawing Number<br>FSM100.2                             |
| Issue Date<br>11/24/21                                                | Checked<br>MDB                                         |
|                                                                       | Drawn<br>MDB                                           |



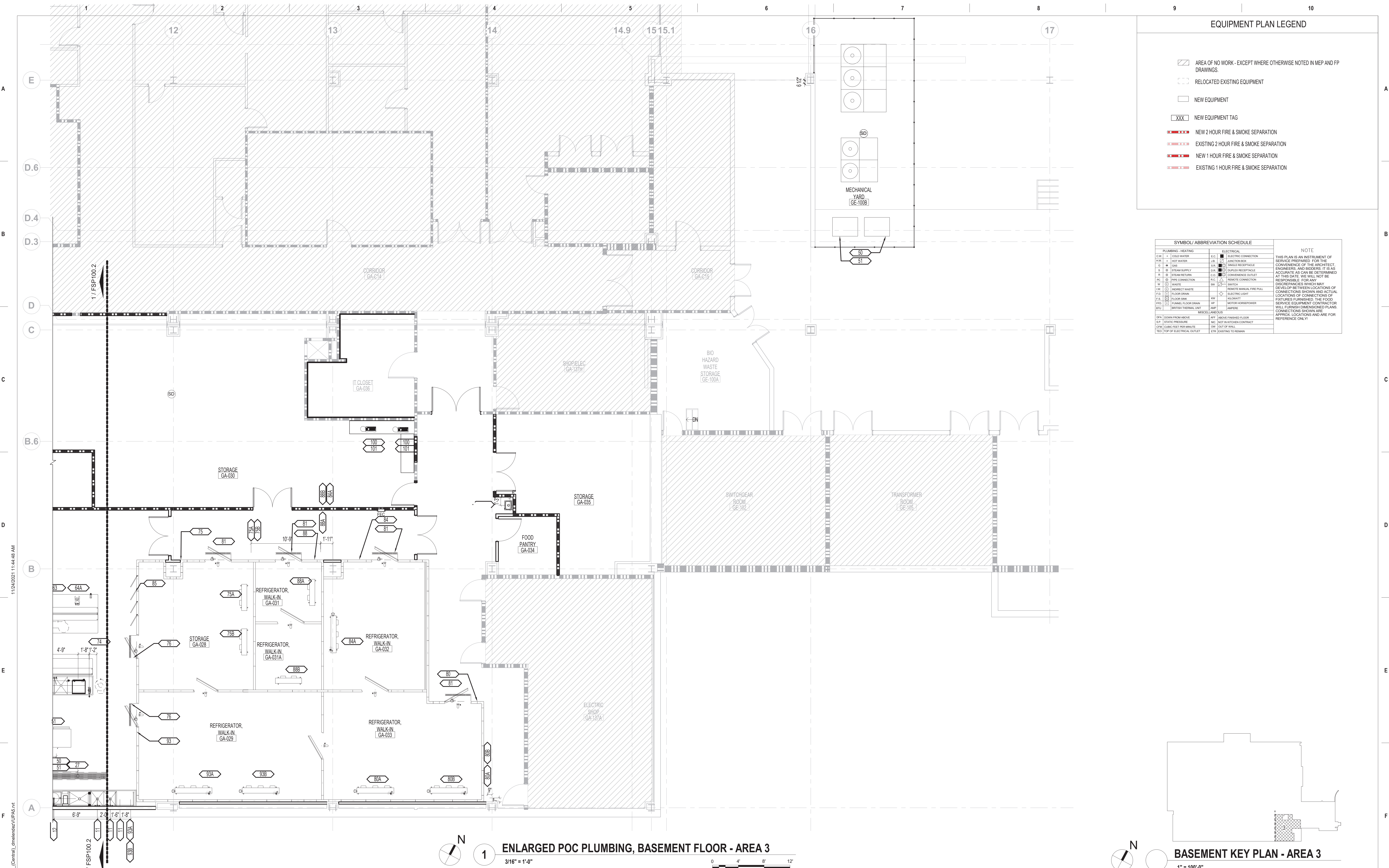
[illegible]

**ENLARGED POC PLUMBING, BASEMENT FLOOR - AREA 2**



|                                                                                                                                                                                                  |  |                                                                             |  |                                                                                                                                                                                  |  |                                                                                                                                                                                                            |  |                                                                                                                         |  |                                                           |  |                                                                                                                                   |  |                                                                                              |  |
|--------------------------------------------------------------------------------------------------------------------------------------------------------------------------------------------------|--|-----------------------------------------------------------------------------|--|----------------------------------------------------------------------------------------------------------------------------------------------------------------------------------|--|------------------------------------------------------------------------------------------------------------------------------------------------------------------------------------------------------------|--|-------------------------------------------------------------------------------------------------------------------------|--|-----------------------------------------------------------|--|-----------------------------------------------------------------------------------------------------------------------------------|--|----------------------------------------------------------------------------------------------|--|
|                                                                                                                                                                                                  |  | CONSULTANT                                                                  |  | ARCHITECT/ENGINEER OF RECORD                                                                                                                                                     |  | STAMP                                                                                                                                                                                                      |  | Drawing Title<br>FOOD SERVICES - ENLARGED PLUMBING POINT OF CONNECTIONS PLAN - AREA 2<br><br>Approved: Project Director |  | Phase<br>BID DOCUMENTS SUBMITTAL<br><br>FULLY SPRINKLERED |  | Project Title<br>RENOVATE/UPGRADE NFS KITCHEN - BUILDING 500 BASEMENT<br><br>Location<br>510 BUTLER AVENUE, MARTINSBURG, WV 25405 |  | Project Number<br>613-19-103<br><br>Building Number<br>500<br><br>Drawing Number<br>FSP100.2 |  |
| BID DOCUMENTS SUBMITTAL<br>100% CONSTRUCTION DOCUMENTS SUBMISSION<br>95% CONSTRUCTION DOCUMENTS SUBMISSION<br>60% DESIGN DEVELOPMENT SUBMISSION<br>30% SCHEMATIC DESIGN SUBMISSION<br>Revisions: |  | 11/24/2021<br>07/23/2021<br>02/12/2021<br>09/11/2020<br>05/24/2020<br>Date: |  |  747 CONKLIN ROAD,<br>BINGHAMTON, NY 13903<br>W: www.ckc.net<br>E: mberard<br>T: 607-217-5389 |  |  700 Nicholas Blvd, Suite 300<br>Elk Grove Village, IL 60007<br>T: 847.952.9362 F: 847.952.9403<br>www.bancroft-ae.com |  | Office of Construction and Facilities Management<br><br>VA U.S. Department of Veterans Affairs                          |  |                                                           |  |                                                                                                                                   |  |                                                                                              |  |





### EQUIPMENT PLAN LEGEND

- AREA OF NO WORK - EXCEPT WHERE OTHERWISE NOTED IN MEP AND FP DRAWINGS.
- RELOCATED EXISTING EQUIPMENT
- NEW EQUIPMENT
- NEW EQUIPMENT TAG
- NEW 2 HOUR FIRE & SMOKE SEPARATION
- EXISTING 2 HOUR FIRE & SMOKE SEPARATION
- NEW 1 HOUR FIRE & SMOKE SEPARATION
- EXISTING 1 HOUR FIRE & SMOKE SEPARATION

| SYMBOL/ABBREVIATION SCHEDULE      |                               |                                                                                                                                                                                                                                                                                                                                                                                                                                                                                         | NOTE |
|-----------------------------------|-------------------------------|-----------------------------------------------------------------------------------------------------------------------------------------------------------------------------------------------------------------------------------------------------------------------------------------------------------------------------------------------------------------------------------------------------------------------------------------------------------------------------------------|------|
| PLUMBING - HEATING                |                               | ELECTRICAL                                                                                                                                                                                                                                                                                                                                                                                                                                                                              |      |
| C.W. + COLD WATER                 | E.C. + ELECTRIC CONNECTION    | <p>THIS PLAN IS AN INSTRUMENT OF SERVICE PREPARED FOR THE CONVENIENCE OF THE ARCHITECT, ENGINEERS, AND BUILDERS. IT IS AS ACCURATE AS CAN BE DETERMINED AT THIS DATE. WE WILL NOT BE RESPONSIBLE FOR ANY DISCREPANCIES WHICH MAY DEVELOP BETWEEN LOCATIONS OF CONNECTIONS SHOWN AND ACTUAL LOCATIONS OF CONNECTIONS OF FUTURES FURNISHED. THE FOOD SERVICE EQUIPMENT CONTRACTOR WILL FURNISH DIMENSIONED PLANS. CONNECTIONS SHOWN ARE APPROX. LOCATIONS AND ARE FOR REFERENCE ONLY.</p> |      |
| H.W. + HOT WATER                  | L.B. + LAMP/BOX               |                                                                                                                                                                                                                                                                                                                                                                                                                                                                                         |      |
| G. + GAS                          | S.R. + SINGLE RECEPTACLE      |                                                                                                                                                                                                                                                                                                                                                                                                                                                                                         |      |
| S. + STEAM SUPPLY                 | D.R. + DUPLEX RECEPTACLE      |                                                                                                                                                                                                                                                                                                                                                                                                                                                                                         |      |
| R. + STEAM RETURN                 | C.O. + COMMUNICATING OUTLET   |                                                                                                                                                                                                                                                                                                                                                                                                                                                                                         |      |
| P.C. + PIPE CONNECTION            | R.C. + REMOTE CONNECTION      |                                                                                                                                                                                                                                                                                                                                                                                                                                                                                         |      |
| W. + WASTE                        | SW. + SWITCH                  |                                                                                                                                                                                                                                                                                                                                                                                                                                                                                         |      |
| I.W. + INDIRECT WASTE             | RM. + REMOTE MANUAL FIRE RALL |                                                                                                                                                                                                                                                                                                                                                                                                                                                                                         |      |
| F.D. + FLOOR DRAIN                | E.L. + ELECTRIC LIGHT         |                                                                                                                                                                                                                                                                                                                                                                                                                                                                                         |      |
| F.S. + FLOOR SINK                 | P.W. + PLUMBING               |                                                                                                                                                                                                                                                                                                                                                                                                                                                                                         |      |
| F.D. + FLOOR DRAIN                | M.P. + MOTOR HORSEPOWER       |                                                                                                                                                                                                                                                                                                                                                                                                                                                                                         |      |
| B.T. + BRITISH THERMAL UNIT       | A.M.P. + AMPERE               |                                                                                                                                                                                                                                                                                                                                                                                                                                                                                         |      |
| MISCELLANEOUS                     |                               |                                                                                                                                                                                                                                                                                                                                                                                                                                                                                         |      |
| D.P. + DOWN FROM ABOVE            | A.T. + ABOVE FINISHED FLOOR   |                                                                                                                                                                                                                                                                                                                                                                                                                                                                                         |      |
| S.P. + STATIC PRESSURE            | N.C. + NOT IN WATER CONTACT   |                                                                                                                                                                                                                                                                                                                                                                                                                                                                                         |      |
| C.F.M. + CUBIC FEET PER MINUTE    | O.W. + OUT OF WALL            |                                                                                                                                                                                                                                                                                                                                                                                                                                                                                         |      |
| T.E.O. + TOP OF ELECTRICAL OUTLET | E.T. + EXISTING TO REMAIN     |                                                                                                                                                                                                                                                                                                                                                                                                                                                                                         |      |

1 ENLARGED POC PLUMBING, BASEMENT FLOOR - AREA 3  
3/16" = 1'-0"

BASEMENT KEY PLAN - AREA 3  
1" = 100'-0"

|                                                                                                                                                                                                                                                                         |                                                                                                                           |                                                                                                                                                                  |                                                                                                                            |                                                                                                                                      |                                         |                                                                                 |                                                                                                           |   |    |
|-------------------------------------------------------------------------------------------------------------------------------------------------------------------------------------------------------------------------------------------------------------------------|---------------------------------------------------------------------------------------------------------------------------|------------------------------------------------------------------------------------------------------------------------------------------------------------------|----------------------------------------------------------------------------------------------------------------------------|--------------------------------------------------------------------------------------------------------------------------------------|-----------------------------------------|---------------------------------------------------------------------------------|-----------------------------------------------------------------------------------------------------------|---|----|
| <b>BID DOCUMENTS SUBMITTAL</b><br>100% CONSTRUCTION DOCUMENTS SUBMISSION 11/24/2021<br>95% CONSTRUCTION DOCUMENTS SUBMISSION 07/23/2021<br>60% DESIGN DEVELOPMENT SUBMISSION 02/12/2021<br>30% SCHEMATIC DESIGN SUBMISSION 09/11/2020<br>Revisions: 05/24/2020<br>Date: | <b>CONSULTANT</b><br><br>747 CONKLIN ROAD,<br>BINGHAMTON, NY 13903<br>W: www.ckc-llc.net<br>E: mberard<br>T: 607-217-5389 | <b>ARCHITECT/ENGINEER OF RECORD</b><br><br>700 Nicholas Blvd, Suite 300<br>Elk Grove Village, IL 60007<br>T: 847.952.9362 F: 847.952.9403<br>www.bancroft-ae.com | <b>STAMP</b><br><br>Office of<br>Construction<br>and Facilities<br>Management<br>VA U.S. Department<br>of Veterans Affairs | <b>Drawing Title</b><br>FOOD SERVICES - ENLARGED PLUMBING POINT OF<br>CONNECTIONS PLAN - AREA 3<br><b>Approved:</b> Project Director | <b>Phase</b><br>BID DOCUMENTS SUBMITTAL | <b>Project Title</b><br>RENOVATE/UPGRADE NFS KITCHEN<br>- BUILDING 500 BASEMENT | <b>Project Number</b><br>613-19-103<br><b>Building Number</b><br>500<br><b>Drawing Number</b><br>FSP100.3 |   |    |
| 1                                                                                                                                                                                                                                                                       | 2                                                                                                                         | 3                                                                                                                                                                | 4                                                                                                                          | 5                                                                                                                                    | 6                                       | 7                                                                               | 8                                                                                                         | 9 | 10 |

C:\Users\mberard\Documents\18-133\_Architectural\_Central\_mberard\UPAS.rvt  
11/24/2021 11:44:48 AM  
VA FORM 08-6231



**ABBREVIATIONS:**  
 CF/CI: Contractor Furnished – Contractor Installed.  
 OF/CI: Owner Furnished – Contractor Installed.  
 EE/CI: Owner Furnished – Owner Installed.  
 OF/OR: Existing Equipment – Contractor Relocate.  
 EE/RP: Existing Equipment – Remains in Place.  
 VF/VI: Vendor Furnished – Vendor Installed.  
 OF/CI: Owner Furnished – Contractor Installed.  
 OF/OI: Owner Furnished – Owner Installed.



A

B

C

D

E

F

A

B

C

D

E

F

11/24/2021 11:44:24 AM

C:\Users\delmendes\Documents\18-133\_Architectural\_Central\_omee\sscc\UPAS.rvt

| 100% FOODSERVICE EQUIPMENT SCHEDULE |                                                        |       |     |                                        |                                                    |                      |                                                        |                             |             |              |                |             |            |                  |         |                 |               |              |                 |             |            |              |      |                 |                 |                   |            |                             |                                           |                            |                                                                                                                                      |                                                                                                    |                                                        |
|-------------------------------------|--------------------------------------------------------|-------|-----|----------------------------------------|----------------------------------------------------|----------------------|--------------------------------------------------------|-----------------------------|-------------|--------------|----------------|-------------|------------|------------------|---------|-----------------|---------------|--------------|-----------------|-------------|------------|--------------|------|-----------------|-----------------|-------------------|------------|-----------------------------|-------------------------------------------|----------------------------|--------------------------------------------------------------------------------------------------------------------------------------|----------------------------------------------------------------------------------------------------|--------------------------------------------------------|
| ITEM NUMBER                         | EQUIPMENT NAME                                         | QTY   | NEW | EXISTING TO BE REMOVED AND REINSTALLED | NOT MOVING PER VA DIRECTION FROM VA EQUIPMENT LIST | FROM BANCROFT SURVEY | EXISTING TO BE RELOCATED OFF-SITE (COORDINATE WITH VA) | EXISTING TO REMAIN IN PLACE | PROVIDED BY | POWER SOURCE | PLUMBING       |             |            |                  |         | MECHANICAL      |               |              |                 |             | ELECTRICAL |              |      |                 |                 | ELECTRICAL WIRING |            |                             |                                           |                            | COMMENTS                                                                                                                             | MANUFACTURER                                                                                       |                                                        |
|                                     |                                                        |       |     |                                        |                                                    |                      |                                                        |                             |             |              | STEAM PRESSURE | STEAM LEASH | CONDENSATE | WATER            | GAS     | WASTE           | EXHAUST (CFM) | SUPPLY (CFM) | VOLTAGE / PHASE | CURRENT (A) | POWER (HP) | POWER (KW)   | DATA | EMERGENCY POWER | ELECTRIC CLOSET | PANEL NO          | CIRCUIT NO | WIRING LENGTH IF OVER 100FT | WIRING AND CONDUIT                        | ELECTRICAL COMMENTS, NOTES |                                                                                                                                      |                                                                                                    |                                                        |
| 61                                  | Worktable w/Sink                                       | 1     | X   |                                        |                                                    |                      |                                                        |                             | CF/CI       |              |                |             |            | 5 HW & 5 CW      |         | 1.5             |               |              | (3) 120/1       | (3) 15      |            | 1920<br>1440 |      | E               | GA137H          | DPA-EQ3SEC2       | 5          | 156                         | 2#6&1#10G, 1 IN C<br>2#10&1#10G, 3/4 IN C | OUTLET ON UDP              | Item# 48 plugs into outlet & 1 Convenience Outlet<br>Item# 56 plugs into outlet                                                      | Custom 30x144 w/ (20x24) sink, overshelf, pot rack & Edlund S-11E can opener (3 outlets in splash) |                                                        |
| 62                                  | Worktable w/Sink                                       | 1     | X   |                                        |                                                    |                      |                                                        |                             | CF/CI       |              |                |             |            | 5 HW & 5 CW      |         | 1.5             |               |              | (3) 120/1       | (3) 15      |            | 1560<br>780  |      | E               | GA137H          | DPA-EQ3SEC1       | 10         | 168                         | 2#10&1#10G, 3/4 IN C                      | OUTLET ON UDP              | Item# 53 plugs into outlet<br>Item# 19 plugs into outlet & 1 Convenience Outlet<br>Item# 64 plug into outlet & 2 Convenience Outlets | Custom 30x144 w/ (20x24) sink, overshelf, pot rack & Edlund S-11E can opener (3 outlets in splash) |                                                        |
| 63                                  | Worktable                                              | 1     | X   |                                        |                                                    |                      |                                                        |                             | CF/CI       |              |                |             |            |                  |         |                 |               |              | (3) 120/1       | (3) 15      |            | 960          |      | E               | GA137H          | DPA-EQ3SEC2       | 8          | 168                         | 2#10&1#10G, 3/4 IN C                      | OUTLET ON UDP              |                                                                                                                                      |                                                                                                    |                                                        |
| 64                                  | Food Processor (Existing Item# E42)                    | 1     |     | X                                      |                                                    |                      |                                                        |                             |             |              |                |             |            |                  |         |                 |               |              | 120/1           | 5 (5-15P)   |            | 600          |      | E               | GA137H          |                   |            |                             |                                           | POWERED FROM #59           |                                                                                                                                      |                                                                                                    |                                                        |
| 64A                                 | Food Processor (Existing Item# E42)                    | 1     |     | X                                      |                                                    |                      |                                                        |                             |             |              |                |             |            |                  |         |                 |               |              | 120/1           | 5 (5-15P)   |            | 600          |      | E               | GA137H          |                   |            |                             |                                           | POWERED FROM #63           |                                                                                                                                      |                                                                                                    |                                                        |
| 65                                  | Slicer (Existing Item# E48)                            | 1     |     | X                                      |                                                    |                      |                                                        |                             | EE/CR       |              |                |             |            |                  |         |                 |               |              | 120/1           | 5.4 (5-15P) | 0.5        | 648          |      |                 | GA137H          | HOUSE PANEL       | 11         | 168                         | 2#10&1#10G, 3/4 IN C                      |                            |                                                                                                                                      |                                                                                                    |                                                        |
| 66                                  | Mobile Slicer Stand                                    | 1     | X   |                                        |                                                    |                      |                                                        |                             | CF/CI       |              |                |             |            |                  |         |                 |               |              | (3) 120/1       | (3) 15      |            | 540          |      |                 | GA137H          | HOUSE PANEL       | 12         | 168                         | 2#10&1#10G, 3/4 IN C                      | OUTLET ON UDP              | 3 Convenience outlets                                                                                                                | Piper 331-3424<br>Custom 30x144 w/ overshelf & Edlund S-11E can opener (3 outlets in splash)       |                                                        |
| 67                                  | Worktable                                              | 1     | X   |                                        |                                                    |                      |                                                        |                             | CF/CI       |              |                |             |            |                  |         |                 |               |              | (3) 120/1       | (3) 15      |            |              |      |                 |                 |                   |            |                             |                                           |                            |                                                                                                                                      |                                                                                                    |                                                        |
| 68                                  | Shelving Units (Existing Item# E26)                    | 1 Lot |     | X                                      |                                                    |                      |                                                        |                             | EE/CR       |              |                |             |            |                  |         |                 |               |              | 120/1           | 5 (5-15P)   |            | 800          |      |                 | GA137H          | HOUSE PANEL       | 13         | 168                         | 2#10&1#10G, 3/4 IN C                      | RECEPTACLE ON #71 UDP      |                                                                                                                                      |                                                                                                    |                                                        |
| 69                                  | Mobile Can Rack (Half Height) (Existing Item# E50)     | 2     |     | X                                      |                                                    |                      |                                                        |                             | EE/CR       |              |                |             |            |                  |         |                 |               |              | 120/1           | 5 (5-15P)   |            | 800          |      |                 | GA137H          | HOUSE PANEL       | 14         | 168                         | 2#10&1#10G, 3/4 IN C                      | RECEPTACLE ON #54 UDP      |                                                                                                                                      |                                                                                                    |                                                        |
| 70                                  | Floor Scales (Existing Item# E32)                      | 1     |     | X                                      |                                                    |                      |                                                        |                             | EE/CR       |              |                |             |            |                  |         |                 |               |              | 120/1           | 5 (5-15P)   |            | 600          |      |                 | GA137H          | HOUSE PANEL       | 15         | 168                         | 2#10&1#10G, 3/4 IN C                      | OUTLET ON UDP              | L15-20P                                                                                                                              | 2 Convenience outlets                                                                              | Custom 36x144 w/ 2 (20x24) sinks (2 outlets in splash) |
| 70A                                 | Floor Scales (Existing Item# E32)                      | 1     |     | X                                      |                                                    |                      |                                                        |                             | EE/CR       |              |                |             |            |                  |         |                 |               |              | 120/1           | 5 (5-15P)   |            | 600          |      |                 | GA137H          | HOUSE PANEL       | 15         | 168                         | 2#10&1#10G, 3/4 IN C                      | RECEPTACLE ON WALL         |                                                                                                                                      |                                                                                                    |                                                        |
| 71                                  | Prep-Table w/ 2 Sinks                                  | 1     | X   |                                        |                                                    |                      |                                                        |                             | CF/CI       |              |                |             |            | 5 HW & 5 CW      | (2) 1.5 |                 |               | (2) 120/1    | (2) 15          |             | 360        |              |      | GA137H          | HOUSE PANEL     | 15                | 168        | 2#10&1#10G, 3/4 IN C        | OUTLET ON UDP                             |                            |                                                                                                                                      |                                                                                                    |                                                        |
| 72                                  | Blast Chiller / Shock Freezer                          | 1     |     | X                                      |                                                    |                      |                                                        |                             | CF/CI       |              |                |             |            |                  | 0.50    |                 |               | 208/3        |                 | 16          | 1920       |              |      | GA137H          | DP-SB-SEC2      | 22,24             | 204        | 2#6&1#10G, 1 IN C           | RECEPTACLE ON WALL                        |                            |                                                                                                                                      | innox MF 54-1L (208/3)                                                                             |                                                        |
| 73                                  | Low Temp Undercounter Dishwasher w/Chemical Sanitizing | 1     | X   |                                        |                                                    |                      |                                                        |                             | CF/CI       |              |                |             |            | .75 HW (110 Deg) |         | 0.75 (hose bib) |               | 120/1        | 13.4            |             | 8604       |              |      | GA137H          | HOUSE PANEL     | 16                | 168        | 2#6&1#10G, 1 IN C           | 90 DEG C WIRE ON UDP #71                  |                            |                                                                                                                                      | Hobart LXEH5                                                                                       |                                                        |
| 74                                  | Potato Peeler (Existing Item# E34)                     | 1     |     | X                                      |                                                    |                      |                                                        |                             | EE/CR       |              |                |             |            | .5 CW            | 2.5     |                 |               | 120/1        | 13 (5-15P)      | 0.75        | 1560       |              |      | GA137H          | HOUSE PANEL     | 17                | 168        | 2#6&1#10G, 1 IN C           | ON UDP #71                                |                            |                                                                                                                                      |                                                                                                    |                                                        |
| 75                                  | Walk-in Food Bank/Produce Cooler                       | 1 Lot | X   |                                        |                                                    |                      |                                                        |                             | CF/CI       |              |                |             |            |                  |         |                 |               | 120/1        | 6 (lights)      |             | 360        |              | E    | GA137H          | DPA-EQ3 SEC2    | 10                |            | 2#12&1#12G, 3/4 IN C        | RECEPTACLE ON AUTO OFF                    |                            |                                                                                                                                      | Bally                                                                                              |                                                        |
| 75A                                 | Food Bank/Produce Cooler Refrigeration System          | 1 Lot | X   |                                        |                                                    |                      |                                                        |                             | CF/CI       |              |                |             |            |                  |         |                 |               | 208/1        | (4) EVAP        | 4.4X0.07    | 240        |              | E    | GA137H          | DPA-EQ3 SEC2    | 26, 28            |            | 2#10&1#10G, 3/4 IN C        |                                           |                            |                                                                                                                                      | Bally                                                                                              |                                                        |
| 75B                                 | Food Bank/Produce Cooler Refrigeration System          | 1 Lot | X   |                                        |                                                    |                      |                                                        |                             | CF/CI       |              |                |             |            |                  |         |                 |               | 208/1        | 1.7             | 2X1/5       | 640        |              | E    | GB100E          | DP-EKB-SEC      | 6, 8              | N/A        | 2#10&1#10G, 3/4 IN C        | SEE 75A                                   |                            |                                                                                                                                      | Bally                                                                                              |                                                        |
| 76                                  | Air Curtains Daily Pull                                | 1     | X   |                                        |                                                    |                      |                                                        |                             | CF/CI       |              |                |             |            |                  |         |                 |               | 208/1        | 1.7             |             |            |              | E    | GB100E          | N/A             |                   |            | N/A                         |                                           |                            |                                                                                                                                      | Berner CLC08-1042A                                                                                 |                                                        |
| 76A                                 | Air Curtains Daily Pull                                | 1     | X   |                                        |                                                    |                      |                                                        |                             | CF/CI       |              |                |             |            |                  |         |                 |               | 208/1        | 1.7             |             |            |              | E    | GB100E          | N/A             |                   |            | N/A                         |                                           |                            |                                                                                                                                      | Berner CLC08-1042A                                                                                 |                                                        |
| 76B                                 | Air Curtains Food Bank                                 | 1     | X   |                                        |                                                    |                      |                                                        |                             | CF/CI       |              |                |             |            |                  |         |                 |               | 208/1        | 6X1.7           | 6X1.7       | 750        |              | E    | GA137H          | DPA-EQ3 SEC2    | 15, 17            |            | 2#10&1#10G, 3/4 IN C        | FEED FROM #76                             | #81, #81A, #81B, #81C      |                                                                                                                                      | Berner CLC08-1042A                                                                                 |                                                        |
| 76C                                 | Air Curtains Meat Pull                                 | 1     | X   |                                        |                                                    |                      |                                                        |                             | CF/CI       |              |                |             |            |                  |         |                 |               | 208/1        |                 |             |            |              | E    | GA137H          |                 |                   |            |                             |                                           | SEE #76B                   |                                                                                                                                      | Berner CLC08-1042A                                                                                 |                                                        |
| 77                                  | Mobile Can Rack                                        | 1 Lot | X   |                                        |                                                    |                      |                                                        |                             | CF/CI       |              |                |             |            |                  |         |                 |               |              |                 |             |            |              |      |                 |                 |                   |            |                             |                                           |                            |                                                                                                                                      |                                                                                                    | Piper CSR-FF 156                                       |
| 78                                  | Shelving Units                                         | 1 Lot | X   |                                        |                                                    |                      |                                                        |                             | CF/CI       |              |                |             |            |                  |         |                 |               |              |                 |             |            |              |      |                 |                 |                   |            |                             |                                           |                            |                                                                                                                                      |                                                                                                    | Metro                                                  |
| 79                                  | Dunnage Units                                          | 1 Lot | X   |                                        |                                                    |                      |                                                        |                             | CF/CI       |              |                |             |            |                  |         |                 |               |              |                 |             |            |              |      |                 |                 |                   |            |                             |                                           |                            |                                                                                                                                      |                                                                                                    | Channel                                                |
| 80                                  | Walk-in Meat Freezer                                   | 1 Lot | X   |                                        |                                                    |                      |                                                        |                             | CF/CI       |              |                |             |            |                  |         |                 |               | 120/1        | 6 (lights)      |             |            |              | E    | GA137H          | DPA-EQ3 SEC2    | 12                |            | 2#12&1#12G, 3/4 IN C        | RECEPTACLE ON AUTO OFF                    |                            |                                                                                                                                      | Bally                                                                                              |                                                        |
| 80A                                 | Meat Freezer Refrigeration System                      | 1 Lot | X   |                                        |                                                    |                      |                                                        |                             | CF/CI       |              |                |             |            |                  |         |                 |               | 208/1        | (4) EVAP        | 4.4X0.07    | 240        |              | E    | GA137H          | DPA-EQ3 SEC2    | 14, 16            |            | 2#12&1#12G, 3/4 IN C        |                                           |                            |                                                                                                                                      | Bally                                                                                              |                                                        |
| 80B                                 | Meat Freezer Refrigeration System                      | 1 Lot | X   |                                        |                                                    |                      |                                                        |                             | CF/CI       |              |                |             |            |                  |         |                 |               | 208/1        | DEFROST         | 15.5A       | 3560       |              | E    | GA137H          | DPA-EQ3 SEC2    | 19, 21            |            | 2#10&1#10G, 3/4 IN C        |                                           |                            |                                                                                                                                      | Bally                                                                                              |                                                        |
| 81                                  | Air Curtains Meat Walk In                              | 1     | X   |                                        |                                                    |                      |                                                        |                             | CF/CI       |              |                |             |            |                  |         |                 |               | 208/1        | 1.7             |             | 408        |              | E    | GA137H          | N/A             | N/A               | N/A        |                             |                                           | SEE 80A                    |                                                                                                                                      | Bally                                                                                              |                                                        |
| 81A                                 | Air Curtains Vegetable Walk In                         | 1     | X   |                                        |                                                    |                      |                                                        |                             | CF/CI       |              |                |             |            |                  |         |                 |               | 208/1        | 1.7             |             | 408        |              | E    | GA137H          | N/A             | N/A               | N/A        |                             |                                           | SEE #76B                   |                                                                                                                                      | Berner CLC08-1048A                                                                                 |                                                        |
| 81B                                 | Air Curtains Food Bank                                 | 1     | X   |                                        |                                                    |                      |                                                        |                             | CF/CI       |              |                |             |            |                  |         |                 |               | 208/1        | 1.7             |             | 408        |              | E    | GA137H          | N/A             | N/A               | N/A        |                             |                                           | SEE #76B                   |                                                                                                                                      | Berner CLC08-1048A                                                                                 |                                                        |
| 81C                                 | Air Curtains Produce/Bread                             | 1     | X   |                                        |                                                    |                      |                                                        |                             | CF/CI       |              |                |             |            |                  |         |                 |               | 208/1        | 1.7             |             | 408        |              | E    | GA137H          | N/A             | N/A               | N/A        |                             |                                           | SEE #76B                   |                                                                                                                                      | Berner CLC08-1048A                                                                                 |                                                        |
| 81D                                 | Air Curtin Compost Freezer                             | 1     | X   |                                        |                                                    |                      |                                                        |                             | CF/CI       |              |                |             |            |                  |         |                 |               | 208/1        | 1.7             |             | 408        |              | E    | GA137H          | DP-SB-SEC1      | 27, 29            |            | 2#10&1#10G, 3/4 IN C        |                                           |                            |                                                                                                                                      | Berner CLC08-1048A                                                                                 |                                                        |
| 82                                  | Shelving Units                                         | 1 Lot | X   |                                        |                                                    |                      |                                                        |                             | CF/CI       |              |                |             |            |                  |         |                 |               |              |                 |             |            |              |      |                 |                 |                   |            |                             |                                           |                            |                                                                                                                                      |                                                                                                    | Metro                                                  |
| 83                                  | Dunnage Units                                          | 1 Lot | X   |                                        |                                                    |                      |                                                        |                             | CF/CI       |              |                |             |            |                  |         |                 |               |              |                 |             |            |              |      |                 |                 |                   |            |                             |                                           |                            |                                                                                                                                      |                                                                                                    | Channel                                                |
| 84                                  | Walk-in Produce/Bread Freezer                          | 1 Lot | X   |                                        |                                                    |                      |                                                        |                             | CF/CI       |              |                |             |            |                  |         |                 |               | 120/1        | 6 (lights)      |             | 360        |              | E    | GA137H          | N/A             | N/A               | N/A        |                             |                                           | SEE #75                    |                                                                                                                                      | Bally                                                                                              |                                                        |
| 84A                                 | Produce/Bread Freezer Refrigeration System             | 1 Lot | X   |                                        |                                                    |                      |                                                        |                             | CF/CI       |              |                |             |            |                  |         |                 |               | 208/1        | DEFROST         | 11.9A       | 2730       |              | E    | GA137H          | DPA-EQ3 SEC2    | 18, 20            |            | 2#12&1#12G, 3/4 IN C        |                                           |                            |                                                                                                                                      | Bally                                                                                              |                                                        |
| 85                                  | Glass Doors w/ Shelving Units                          | 1     | X   |                                        |                                                    |                      |                                                        |                             | CF/CI       |              |                |             |            |                  |         |                 |               | 120/1        | 8               |             | 320        |              | E    | GA137H          | DPA-EQ3 SEC2    | 22, 24            |            | 2#10&1#10G, 3/4 IN C        |                                           |                            |                                                                                                                                      | Sillite Doors                                                                                      |                                                        |
| 86                                  | Food High Density Shelving Units                       | 1 Lot | X   |                                        |                                                    |                      |                                                        |                             | CF/CI       |              |                |             |            |                  |         |                 |               |              |                 |             |            |              |      |                 |                 |                   |            |                             |                                           |                            |                                                                                                                                      |                                                                                                    | Metro                                                  |
| 87                                  | Dunnage Units                                          | 1 Lot | X   |                                        |                                                    |                      |                                                        |                             | CF/CI       |              |                |             |            |                  |         |                 |               | 120/1        | 2 (lights)      |             | 230        |              | E    | GA137H          | DPA-EQ3 SEC2    | 23                |            | 2#12&1#12G, 3/4 IN C        |                                           |                            |                                                                                                                                      | Channel                                                                                            |                                                        |
| 88                                  | Walk-in Vegetable & Beverage Cooler                    | 1 Lot | X   |                                        |                                                    |                      |                                                        |                             | CF/CI       |              |                |             |            |                  |         |                 |               | 208/1        | 1.2             | 2x0.07      | 120        |              | E    | GA137H          | N/A             | N/A               | N/A        |                             |                                           | SEE #75                    |                                                                                                                                      | Bally                                                                                              |                                                        |
| 88A                                 | Vegetable Cooler Evaporator                            | 1 Lot | X   |                                        |                                                    |                      |                                                        |                             | CF/CI       |              |                |             |            |                  |         |                 |               | 208/1        | 0.6             | 1x0.07      | 60         |              | E    | GA137H          | DPA-EQ3 SEC1    | 22, 24            |            | 2#12&1#12G, 3/4 IN C        |                                           |                            |                                                                                                                                      | Bally                                                                                              |                                                        |
| 88B                                 | Beverage Cooler Evaporator                             | 1 Lot | X   |                                        |                                                    |                      |                                                        |                             | CF/CI       |              |                |             |            |                  |         |                 |               | 208/1        | 0.6             | 1x0.07      | 60         |              | E    | GA137H          | DPA-EQ3 SEC1    | 22, 24            |            | 2#12&1#12G, 3/4 IN C        |                                           |                            |                                                                                                                                      | Bally                                                                                              |                                                        |
| 89                                  | Refrigeration Rack System for # Items# 75, 80 & 93     |       |     |                                        |                                                    |                      |                                                        |                             |             |              |                |             |            |                  |         |                 |               | 480/3        | 28              |             | 23268      |              | E    | GA137H          | DPA-EQ3 SEC1    | 25, 27            |            | 4#6&1#10G, 1 IN C           |                                           |                            |                                                                                                                                      |                                                                                                    |                                                        |
| 89A                                 | CONDENSING UNITS 75, 80, 93 LIGHTS, OUTLETS            |       |     |                                        |                                                    |                      |                                                        |                             |             |              |                |             |            |                  |         |                 |               | 120/1        |                 |             | 360        |              | E    | GA137H          | DPA-EQ          | 8, 10, 12         | 96         | 4#6&1#10G, 1 IN C           |                                           |                            |                                                                                                                                      |                                                                                                    |                                                        |
| 90                                  | Mobile Lug Racks (Existing Item# - Rocate)             | 1 Lot |     | X                                      |                                                    |                      |                                                        |                             | EE/CR       |              |                |             |            |                  |         |                 |               |              |                 |             |            |              |      |                 |                 |                   |            |                             |                                           |                            |                                                                                                                                      |                                                                                                    |                                                        |
| 91                                  | Shelving Units                                         | 1 Lot | X   |                                        |                                                    |                      |                                                        |                             | CF/CI       |              |                | </          |            |                  |         |                 |               |              |                 |             |            |              |      |                 |                 |                   |            |                             |                                           |                            |                                                                                                                                      |                                                                                                    |                                                        |



A

B

C

D

E

F

A

B

C

D

E

F

11/24/2021 11:44:25 AM

C:\Users\dmelendez\Documents\18-133\_Architectural\_Central\_cmeleendez\UPAS.rvt

| 100% FOODSERVICE EQUIPMENT SCHEDULE |                                                        |       |     |                                        |                             |                        |                                                       |                             |             |              |                |              |               |       |            |       |               |               |                 |             |            |                   |        |                 |                 |            |                   |                      |                                                      |                                                                 |                                                            |                                                           |                                                         |
|-------------------------------------|--------------------------------------------------------|-------|-----|----------------------------------------|-----------------------------|------------------------|-------------------------------------------------------|-----------------------------|-------------|--------------|----------------|--------------|---------------|-------|------------|-------|---------------|---------------|-----------------|-------------|------------|-------------------|--------|-----------------|-----------------|------------|-------------------|----------------------|------------------------------------------------------|-----------------------------------------------------------------|------------------------------------------------------------|-----------------------------------------------------------|---------------------------------------------------------|
| ITEM NUMBER                         | EQUIPMENT NAME                                         | QTY   | NEW | EXISTING TO BE REMOVED AND REINSTALLED | NOT MOVING PER VA DIRECTION | FROM VA EQUIPMENT LIST | EXISTING TO BE RELOCATED OFFSITE (COORDINATE WITH VA) | EXISTING TO REMAIN IN PLACE | PROVIDED BY | POWER SOURCE | PLUMBING       |              |               |       | MECHANICAL |       | ELECTRICAL    |               |                 |             |            | ELECTRICAL WIRING |        |                 |                 |            | COMMENTS          | MANUFACTURER         |                                                      |                                                                 |                                                            |                                                           |                                                         |
|                                     |                                                        |       |     |                                        |                             |                        |                                                       |                             |             |              | STEAM PRESSURE | STEAM LBS/HR | CONDENSATE    | WATER | GAS        | WASTE | EXHAUST (CFM) | SUPPLY (CFM)  | VOLTAGE / PHASE | CURRENT (A) | POWER (HP) | POWER (KW)        | DATA   | EMERGENCY POWER | ELECTRIC CLOSET | PANEL NO   |                   |                      | CIRCUIT NO                                           | WIRING LENGTH IF OVER 100FT                                     | WIRING AND CONDUIT                                         | ELECTRICAL COMMENTS, NOTES                                |                                                         |
| 119                                 | Mobile Plate Warmers (Existing Item# E7??)             | 1     |     | X                                      |                             |                        |                                                       |                             | EE/CR       |              |                |              |               |       |            |       | 208/1         | 15.4 (6-20P)  |                 | 3696        |            |                   |        |                 |                 |            |                   |                      | INSTALL CABLE REEL FROM CEILING FOR FINAL CONNECTION |                                                                 |                                                            |                                                           |                                                         |
| 119A                                | Mobile Plate Warmers (Existing Item# E7??)             | 1     |     | X                                      |                             |                        |                                                       |                             | EE/CR       |              |                |              |               |       |            |       | 208/1         | 15.4 (6-20P)  |                 | 3696        |            |                   | GB100E | DP-KC           | 2, 4            |            |                   | 2#10&1#10G, 3/4 IN C | INSTALL CABLE REEL FROM CEILING FOR FINAL CONNECTION |                                                                 |                                                            |                                                           |                                                         |
| 119F                                | Mobile Plate Warmers (Existing Item# E7??)             | 1     |     | X                                      |                             |                        |                                                       |                             | EE/CR       |              |                |              |               |       |            |       | 208/1         | 15.4 (6-20P)  |                 | 3696        |            |                   | GB100E | DP-KC           | 1, 3            |            |                   | 2#10&1#10G, 3/4 IN C | INSTALL CABLE REEL FROM CEILING FOR FINAL CONNECTION |                                                                 |                                                            |                                                           |                                                         |
| 120                                 | Pellet Base Heaters (Existing Item# E7??)              | 1     |     | X                                      |                             |                        |                                                       |                             | EE/CR       |              |                |              |               |       |            |       | 208/1         | 16 (L6-20P)   |                 |             |            | 3848              |        | E               | GB100E          | DP-KC      | 5, 7              |                      | 2#10&1#10G, 3/4 IN C                                 | INSTALL CABLE REEL FROM CEILING FOR FINAL CONNECTION            |                                                            |                                                           |                                                         |
| 120A                                | Pellet Base Heaters (Existing Item# E7??)              | 1     |     | X                                      |                             |                        |                                                       |                             | EE/CR       |              |                |              |               |       |            |       | 208/1         | 16 (L6-20P)   |                 |             |            | 3848              |        | E               | GB100E          | EQP-SWBD 2 | 1, 3              | 110                  | 2#8&1#10G, 1 IN C                                    | INSTALL CABLE REEL FROM CEILING FOR FINAL CONNECTION            |                                                            |                                                           |                                                         |
| 120F                                | Pellet Base Heaters (Existing Item# E7??)              | 1     |     | X                                      |                             |                        |                                                       |                             | EE/CR       |              |                |              |               |       |            |       | 208/1         | 16 (L6-20P)   |                 |             |            | 3848              |        | E               | GB100E          | EQP-SWBD 2 | 2, 4              | 110                  | 2#8&1#10G, 1 IN C                                    | INSTALL CABLE REEL FROM CEILING FOR FINAL CONNECTION            |                                                            |                                                           |                                                         |
| 121                                 | SPARE NUMBER                                           | 1 Lot | X   |                                        |                             |                        |                                                       |                             | OF/CI       |              |                |              |               |       |            |       |               |               |                 |             |            |                   |        |                 |                 |            |                   |                      |                                                      |                                                                 |                                                            |                                                           |                                                         |
| 122                                 | Mobile Steam Pan Racks                                 | 1     | X   |                                        |                             |                        |                                                       |                             | OF/CI       |              |                |              |               |       |            |       |               |               |                 |             |            |                   |        |                 |                 |            |                   |                      |                                                      |                                                                 |                                                            |                                                           | Channel LPNS-15                                         |
| 123                                 | Mobile Tray Assembly Station                           | 1     | X   |                                        |                             |                        |                                                       |                             | OF/CI       |              |                |              |               |       |            |       |               |               |                 |             |            |                   |        |                 |                 |            |                   |                      |                                                      |                                                                 |                                                            |                                                           | Custom table 30x144 w/drawers & undershelf (no outlets) |
| 123F                                | Mobile Tray Assembly Station                           | 1     | X   |                                        |                             |                        |                                                       |                             | OF/CI       |              |                |              |               |       |            |       |               |               |                 |             |            |                   |        |                 |                 |            |                   |                      |                                                      |                                                                 |                                                            |                                                           |                                                         |
| 124                                 | Mobile 5 Well Hot Food Unit                            | 1     |     | X                                      |                             |                        |                                                       |                             | EE/CR       |              |                |              |               |       |            | 1     | 208/1         | 15 3/5        |                 | 3756        |            |                   | GB100E | DP-KC           | 9 (#124)        |            |                   | 2#6&1#10G, 1 IN C    | INSTALL CABLE REEL FROM CEILING FOR FINAL CONNECTION | Radiant Heater w/ Light (120V/1 - A7) mounted to overshelf      |                                                            |                                                           |                                                         |
|                                     | Mobile 5 Well Hot Food Unit (Existing Item# E223)-124A | 4     | -   | X                                      |                             |                        |                                                       |                             |             |              |                |              |               |       | 4          | 120/4 | 31.3A (6-60P) |               | 3756            |             |            | GB100E            | DP-KC  | 6 (#124A)       |                 |            | 2#6&1#10G, 1 IN C |                      |                                                      |                                                                 |                                                            |                                                           |                                                         |
| 124F                                | Mobile 5 Well Hot Food Unit (Existing Item# E7??)      | 1     |     | X                                      |                             |                        |                                                       |                             | EE/CR       |              |                |              |               |       |            | 1     | 120/1         | 31.3A (5-50P) |                 | 3756        |            |                   | GB100E | DP-KC           | 8               |            |                   | 2#6&1#10G, 1 IN C    |                                                      |                                                                 | Radiant Heater w/ Light (120V/1 - A7) mounted to overshelf |                                                           |                                                         |
| 125                                 | Mobile Air Curtin Refrigerators (Existing E99)         | 1     | ??  | ??                                     |                             |                        |                                                       |                             | EE/CR       |              |                |              |               |       |            |       | 120/1         | 6.5           |                 | 780         |            |                   | E      | GB100E          | DP-EKB-SEC2     | 14         |                   | 2#10&1#10G, 3/4 IN C | INSTALL CABLE REEL FROM CEILING FOR FINAL CONNECTION |                                                                 |                                                            |                                                           |                                                         |
| 125A                                | Mobile Air Curtin Refrigerators (Existing E99)         | 1     | ??  | ??                                     |                             |                        |                                                       |                             | EE/CR       |              |                |              |               |       |            |       | 120/1         | 6.5           |                 | 780         |            |                   | E      | GB100E          | DP-EKB-SEC2     | 17         |                   | 2#10&1#10G, 3/4 IN C | INSTALL CABLE REEL FROM CEILING FOR FINAL CONNECTION |                                                                 |                                                            |                                                           |                                                         |
| 125F                                | Mobile Air Curtin Refrigerators (Existing???)          | 1     | ??  | ??                                     |                             |                        |                                                       |                             | EE/CR       |              |                |              |               |       |            |       | 120/1         | 6.5           |                 | 780         |            |                   | E      | GB100E          | DP-EKB-SEC2     | 16         |                   | 2#10&1#10G, 3/4 IN C |                                                      |                                                                 |                                                            |                                                           |                                                         |
| 126                                 | Hose Reel w/Control Valve                              | 1     | X   |                                        |                             |                        |                                                       |                             | CF/CI       |              |                |              | .5 HW & .5 CW |       |            |       |               |               |                 |             |            |                   |        |                 |                 |            |                   |                      |                                                      |                                                                 |                                                            | T&S B7102-01M w/ H/C valve (mount to bracket in Item# 71) |                                                         |
| 127                                 | Mobile 5 Well Hot Food Unit                            | 1     | X   |                                        |                             |                        |                                                       |                             | CF/CI       |              |                |              |               |       | 0.75       |       | 208/1         | 15 3/5        |                 | 3756        |            |                   | E      | GB100E          | DP-KB-SEC3      | 19, 21     |                   | 2#10&1#10G, 3/4 IN C | INSTALL CABLE REEL FROM CEILING FOR FINAL CONNECTION | 6-30P Radiant Heater w/ Light (120V/1 - A) mounted to overshelf | Metro                                                      |                                                           |                                                         |
| 128                                 | Mobile 1 Door Reach-in Freezer                         | 1     | X   |                                        |                             |                        |                                                       |                             | OF/CI       |              |                |              |               |       |            |       | 120/1         | 8.5 (5-15P)   |                 | 1020        |            |                   | E      | GB100E          | DP-EKB-SEC2     | 18         |                   | 2#10&1#10G, 3/4 IN C | INSTALL CABLE REEL FROM CEILING FOR FINAL CONNECTION |                                                                 | True TS-23FG                                               |                                                           |                                                         |
| 128F                                | Mobile 1 Door Reach-in Freezer                         | 1     | X   |                                        |                             |                        |                                                       |                             | OF/CI       |              |                |              |               |       |            |       | 120/1         | 8.5 (5-15P)   |                 | 1020        |            |                   | E      | GB100E          | DP-EKB-SEC2     | 19         |                   | 2#10&1#10G, 3/4 IN C | INSTALL CABLE REEL FROM CEILING FOR FINAL CONNECTION |                                                                 | True TS-23FG                                               |                                                           |                                                         |
| 129                                 | Mobile 1 Door Reach-in Freezer (Existing Item# E133)   | 1     |     | X                                      |                             |                        |                                                       |                             | EE/CR       |              |                |              |               |       |            |       | 120/1         | 8 (5-15P)     |                 | 1020        |            |                   | E      | GB100E          | DP-EKB-SEC2     | 20         |                   | 2#10&1#10G, 3/4 IN C | INSTALL CABLE REEL FROM CEILING FOR FINAL CONNECTION |                                                                 |                                                            |                                                           |                                                         |
| 130                                 | 2 Door Reach-in Freezer                                | 1     | X   |                                        |                             |                        |                                                       |                             | OF/CI       |              |                |              |               |       |            |       | 120/1         | 9.8 (5-15P)   |                 | 1176        |            |                   | E      | GB100E          | DP-EKB-SEC2     | 21         |                   | 2#10&1#10G, 3/4 IN C |                                                      |                                                                 | 2F-SA                                                      |                                                           |                                                         |
| 131                                 | Ice Maker (Existing Item# E108)                        | 1     |     | X                                      |                             |                        |                                                       |                             | EE/CR       |              |                |              | .5 CW         |       | (2) .75    |       | 120/1         | 10.8          |                 | 1296        |            |                   | E      | GB100E          | DP-EKB-SEC2     | 22         |                   | 2#10&1#10G, 3/4 IN C |                                                      |                                                                 | Piper 715-2-A15                                            |                                                           |                                                         |
| 132                                 | Mobile Silverware Station                              | 1     | X   |                                        |                             |                        |                                                       |                             | OF/CI       |              |                |              |               |       |            |       |               |               |                 |             |            |                   |        |                 |                 |            |                   |                      |                                                      |                                                                 |                                                            |                                                           |                                                         |
| 133                                 | Ice Maker/Dispenser (Existing Item# E78)               | 1     |     | X                                      |                             |                        |                                                       |                             | EE/CR       |              |                |              | .5 CW         |       | (2) .75    |       | 120/1         | 14            |                 | 1680        |            |                   | E      | GB100E          | DP-EKB-SEC2     | 23         |                   | 2#10&1#10G, 3/4 IN C |                                                      | w/ Water Filter                                                 |                                                            |                                                           |                                                         |
| 134                                 | Worktable (Existing Item# E114)                        | 1     |     | X                                      |                             |                        |                                                       |                             | EE/CR       |              |                |              |               |       |            |       |               |               |                 |             |            |                   |        |                 |                 |            |                   |                      |                                                      |                                                                 |                                                            |                                                           |                                                         |
| 135                                 | Floor Trough                                           | 1     | X   |                                        |                             |                        |                                                       |                             | CF/CI       |              |                |              |               |       |            |       |               |               |                 |             |            |                   |        |                 |                 |            |                   |                      |                                                      |                                                                 |                                                            |                                                           | IMC ASFT-1230-SG                                        |
| 136                                 | Coffee Makers (Existing Item# E115)                    | 1     |     | X                                      |                             |                        |                                                       |                             | EE/CR       |              |                |              | .5 CW         |       |            | 4     | 120/1         | 14.2          |                 | 1680        |            |                   | E      | GB100E          | DP-EKB-SEC2     | 24         |                   | 2#10&1#10G, 3/4 IN C |                                                      | w/ Water Filter                                                 |                                                            |                                                           |                                                         |
| 136A                                | Coffee Makers (Existing Item# E115)                    | 1     |     | X                                      |                             |                        |                                                       |                             | EE/CR       |              |                |              | .5 CW         |       |            |       | 120/1         | 14.2          |                 | 1680        |            |                   | E      | GB100E          | DP-EKB-SEC2     | 25         |                   | 2#10&1#10G, 3/4 IN C |                                                      | w/ Water Filter                                                 |                                                            |                                                           |                                                         |
| 137                                 | Equipment Stand (Existing Item# E77)                   | 1     |     | X                                      |                             |                        |                                                       |                             | EE/CR       |              |                |              |               |       |            |       |               |               |                 |             |            |                   |        |                 |                 |            |                   |                      |                                                      |                                                                 |                                                            |                                                           |                                                         |
| 138                                 | Ice Tea Brewer (Existing Item# E76)                    | 1     |     | X                                      |                             |                        |                                                       |                             | EE/CR       |              |                |              | .5 (VFY)      |       |            |       |               |               |                 | 1680        |            |                   |        | GB100E          | DP-EKB-SEC2     | 26         |                   | 2#10&1#10G, 3/4 IN C |                                                      |                                                                 |                                                            |                                                           |                                                         |
| 139                                 | Chemical Shelving Unit                                 | 1 Lot | X   |                                        |                             |                        |                                                       |                             | OF/CI       |              |                |              |               |       |            |       |               |               |                 |             |            |                   |        |                 |                 |            |                   |                      |                                                      |                                                                 |                                                            |                                                           | Metro                                                   |
| 140                                 | Mop Sinks w/Mop Rack                                   | 3     | X   |                                        |                             |                        |                                                       |                             | CF/CI       |              |                |              | .5 HW & .5 CW |       | 2          |       |               |               |                 |             |            |                   |        |                 |                 |            |                   |                      |                                                      |                                                                 |                                                            | 9-OP-48DF w/ K-246 mop rack                               |                                                         |
| 141                                 | Equipment Stand (Existing Item# E112)                  | 1     |     | X                                      |                             |                        |                                                       |                             | EE/CR       |              |                |              |               |       |            |       |               |               |                 |             |            |                   |        |                 |                 |            |                   |                      |                                                      |                                                                 |                                                            |                                                           |                                                         |
| 142                                 | 1 Door Reach-in Refrigerator                           | 1     | X   |                                        |                             |                        |                                                       |                             | OF/CI       |              |                |              |               |       |            |       | 120/1         | 5.2 (5-15P)   |                 | 624         |            |                   |        | GB100E          | DP-EKB-SEC2     | 27         | 110               | 2#10&1#10G, 3/4 IN C |                                                      |                                                                 | 1-REN-SA                                                   |                                                           |                                                         |
| 143                                 | Digester                                               | 1     | X   |                                        |                             |                        |                                                       |                             | EE/CR       |              |                |              | .5 CW         |       | 2          |       | 120/1         | 5 (5-20P)     |                 |             |            |                   |        |                 | GB100E          | DP-KC      | 16                |                      | 2#12 & 1#12g, 3/4 IN                                 | VERIFY THAT EQUIPMENT CORD HAS GFCI IN PLUG                     | 114 Gallons/day                                            | Unit weighs 1000 lbs.                                     |                                                         |

**ABBREVIATIONS:**  
CF/CI: Contractor Furnished - Contractor Installed.  
OF/CI: Owner Furnished - Contractor Installed.  
OF/O: Owner Furnished - Owner Installed.  
EE/CR: Existing Equipment - Contractor Relocate.  
EE/RP: Existing Equipment -Remains in Place.  
VF/V: Vendor Furnished - Vendor Installed.  
OF/CI: Owner Furnished - Contractor Installed.  
OF/O: Owner Furnished - Owner Installed.

|                                        |  |            |  |            |  |                              |  |       |  |                                                  |  |                                                  |  |                                  |  |                                                                       |  |                              |  |
|----------------------------------------|--|------------|--|------------|--|------------------------------|--|-------|--|--------------------------------------------------|--|--------------------------------------------------|--|----------------------------------|--|-----------------------------------------------------------------------|--|------------------------------|--|
| BID DOCUMENTS SUBMITTAL                |  | 11/24/2021 |  | CONSULTANT |  | ARCHITECT/ENGINEER OF RECORD |  | STAMP |  | Office of Construction and Facilities Management |  | Drawing Title<br>FOOD SERVICE EQUIPMENT SCHEDULE |  | Phase<br>BID DOCUMENTS SUBMITTAL |  | Project Title<br>RENOVATE/UPGRADE NFS KITCHEN - BUILDING 500 BASEMENT |  | Project Number<br>613-19-103 |  |
| 100% CONSTRUCTION DOCUMENTS SUBMISSION |  | 07/23/2021 |  |            |  |                              |  |       |  | VA                                               |  | Approved: Project Director                       |  |                                  |  | Location<br>510 BUTLER AVENUE, MARTINSBURG, WV 25405                  |  | Building Number<br>500       |  |
| 95% CONSTRUCTION DOCUMENTS SUBMISSION  |  | 02/12/2021 |  |            |  |                              |  |       |  | www.bancroft-ae.com                              |  |                                                  |  |                                  |  | Issue Date<br>11/24/21                                                |  | Drawing Number<br>FS613      |  |
| 60% DESIGN DEVELOPMENT SUBMISSION      |  | 09/11/2020 |  |            |  |                              |  |       |  |                                                  |  |                                                  |  |                                  |  | Checked<br>MDB                                                        |  | Drawn<br>MDB                 |  |
| 30% SCHEMATIC DESIGN SUBMISSION        |  | 05/24/2020 |  |            |  |                              |  |       |  |                                                  |  |                                                  |  |                                  |  |                                                                       |  |                              |  |
| Revisions:                             |  | Date:      |  |            |  |                              |  |       |  |                                                  |  |                                                  |  |                                  |  |                                                                       |  |                              |  |