

DATA SHEET

ITEM NAME: Medium Conference Table, 72"w

ITEM CODE: T5

MANUFACTURER: Knoll

PRODUCT NAME: Dividends Horizon

PRODUCT #: DT1ARY9030



DIMENSIONS: 90"w x 30"d x 28 1/2"h

FINISH: Plastic Laminate: Light Ash; Molded Edge: Light Ash; Base: Folkstone Grey (Textured)

UPHOLSTERY: N/A

DESCRIPTION: Provide table with:

- high pressure plastic laminate top
- two freestanding Y legs with stretcher or stiffening plate
- stretcher is extruded aluminum, foot is die cast aluminum and column is extruded aluminum with 3/16" thick structural plate

Zone 1 Quantity

1

Zone 2 Quantity

1

Zone 3 Quantity

0

TOTAL QUANTITY: 2

DATA SHEET

ITEM NAME: Water Control/EOC Conference Table

ITEM CODE: T6

MANUFACTURER: Knoll

PRODUCT NAME: Dividends Horizon

PRODUCT #: DT1ARY8442N



DIMENSIONS: 84"w x 42"d x 28 1/2"h

FINISH: Plastic Laminate: Light Ash; Edge: Light Ash; Base: Folkstone Grey (Textured)

UPHOLSTERY: N/A

DESCRIPTION: Provide table with:

- high pressure plastic laminate top
- two freestanding Y legs with stretcher or stiffening plate
- stretcher is extruded aluminum, foot is die cast aluminum and column is extruded aluminum with 3/16" thick structural plate

Zone 1 Quantity

0

Zone 2 Quantity

1

Zone 3 Quantity

0

TOTAL QUANTITY: 1

DATA SHEET

ITEM NAME: Small Round Meeting Table

ITEM CODE: T7a

MANUFACTURER: Knoll

PRODUCT NAME: Dividends Horizon Tables

PRODUCT #: DT1ACX42



DIMENSIONS: 42" dia x 28 1/2"h

FINISH: Plastic Laminate: Light Ash; Edge: Light Ash; Base: Folkstone Grey (Textured)

UPHOLSTERY: N/A

DESCRIPTION: Provide table with:
-high pressure plastic laminate top
-X base
-glides

Zone 1 Quantity

1

Zone 2 Quantity

3

Zone 3 Quantity

2

TOTAL QUANTITY: 6

DATA SHEET

ITEM NAME: Small Round Meeting Table

ITEM CODE: T7b

MANUFACTURER: Knoll

PRODUCT NAME: Dividends Horizon Tables

PRODUCT #: DT1ACX36



DIMENSIONS: 36" dia x 28 1/2"h

FINISH: Plastic Laminate: Light Ash or Grey Ash; Edge: Light Ash or Grey Ash;
Base: Folkstone Grey (Textured)

UPHOLSTERY: N/A

DESCRIPTION: Provide table with:
-high pressure plastic laminate top
-X base
-glides

Zone 1 Quantity

0

Zone 2 Quantity

3

Zone 3 Quantity

0

TOTAL QUANTITY: 3

DATA SHEET

ITEM NAME: Side Table, Wellness Room

ITEM CODE: T10

MANUFACTURER: Wieland

PRODUCT NAME: Capital

PRODUCT #: 35-202121



DIMENSIONS: 21"w x 21"d x 20"h

FINISH: Wood: #80 Sepia on Maple; Plastic Laminate: Color to match wood

UPHOLSTERY: N/A

DESCRIPTION: Provide end table, will be used with the glider:

- wood legs
- plastic laminate top
- heavy use wood finish for frequent cleaning
- twenty-five year warranty

Zone 1 Quantity

2

Zone 2 Quantity

0

Zone 3 Quantity

0

TOTAL QUANTITY: 2

DATA SHEET

ITEM NAME: Laptop Table

ITEM CODE: T13

MANUFACTURER: Knoll

PRODUCT NAME: Tobaggan Pull Up Table

PRODUCT #: ACT-TB-2-GL-130T-130



DIMENSIONS: 18.2"w x 16.4"d x 24.5"h

FINISH: Frame: Dark Red-Textured; Tablet: Dark Red Laminate

UPHOLSTERY: N/A

DESCRIPTION: Provide laptop table with:
-pull up capability, can also be used as a place to perch
-powder-coated steel frame
-molded plywood with laminate surface
-molded nylon glides
-steel fasteners and hardware

Zone 1 Quantity

0

Zone 2 Quantity

4

Zone 3 Quantity

0

TOTAL QUANTITY: 4

DATA SHEET

ITEM NAME: Cube Table

ITEM CODE: T14

MANUFACTURER: Knoll

PRODUCT NAME: Power Cube

PRODUCT #:
ACT-PW-PC-24-24-13-1C
ACT-PW-PC-24-24-13-1CUSB
ACT-CB-M-MARKER
ACT-CB-M-CLOTH
ACT-CUP-MG



DIMENSIONS: 24"w x 24"d x 13"h

FINISH: White markerboard paint

UPHOLSTERY: N/A

DESCRIPTION: Provide cube table with:
-powder coated steel with white markerboard finish
-4 dry erase markers
-1 microfiber eraser cloth
-magnetic accessory cup
-electrical outlets on one side, cord set
-three electrical outlets/two USB ports on one side, cord set

Zone 1 Quantity

0

Zone 2 Quantity

2

Zone 3 Quantity

0

TOTAL QUANTITY: 2

DATA SHEET

ITEM NAME: Library Table

ITEM CODE: T16

MANUFACTURER: Knoll Studio

PRODUCT NAME: Pixel

PRODUCT #: KCXW7224G



C-Leg Base

DIMENSIONS: 72"w x 24"d x 29"h

FINISH: Laminate Top in Light Ash, Flat Edge in Folkstone, Table Base: Medium Grey

UPHOLSTERY: N/A

DESCRIPTION: Provide table with:
-high pressure laminate top with square edge
-C-leg base with powder coat finish
-adjustable glides
-lifetime warranty

Zone 1 Quantity
0

Zone 2 Quantity
1

Zone 3 Quantity
0

TOTAL QUANTITY: 1

DATA SHEET

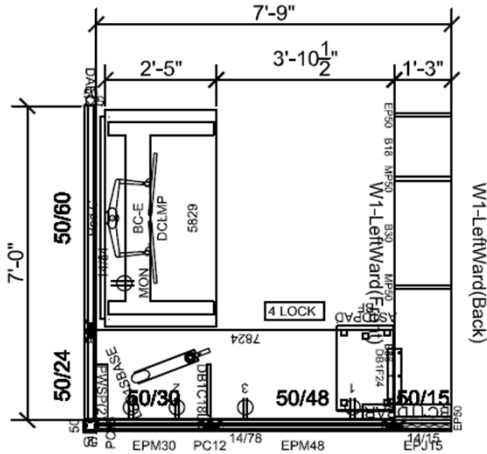
ITEM NAME: Workstation, Focus

ITEM CODE: W1

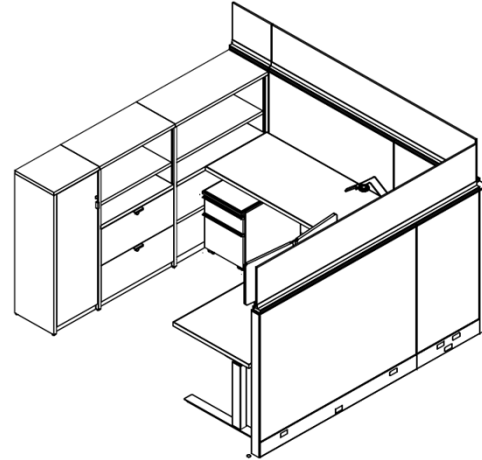
MANUFACTURER: Knoll

PRODUCT NAME: Template (storage), Dividends (panel system and mobile ped), Tone (height adjustable tops and bases), Antenna (desk screen), Knoll Extra (task light, and monitor arm)

PRODUCT #: See info on this data sheet for component requirements.



Plan



Isometric

DIMENSIONS: 7' 9" x 7' actual workstation dimension

FINISH: Plastic Laminate: Light Ash; Edge: Light Ash; Paint: Folkstone Grey

UPHOLSTERY: Screen: Pesto K1000/8, Color Red Carpet; Mobile Pedestal Cushion: Greenwich K1753/4, Color Sheridan; Panel Fabric: Circuit W1754/2, Color Frequency

DESCRIPTION:

- 60" x 30" Tone extended range height adjustable table with screen

- 78" x 24" secondary work surface

Monolithic 50"H panels with 14"H framless glass stack ons

Duplex receptacles

mounted to adjustable height table

management basket mounted to adjustable height table

clips (5) per station

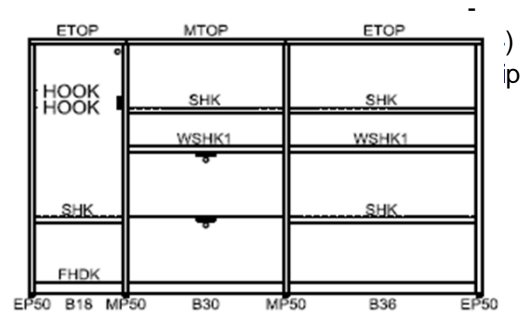
box/file ped with cushion and pencil tray

desk lamp

monitor arm- clamp mount

module- clamp mount

- Template storage wall: Includes (4) file drawer partitions (see elevation right)



Zone 1 Quantity

95

Zone 2 Quantity

75

Zone 3 Quantity

88

TOTAL QUANTITY: 258

DATA SHEET

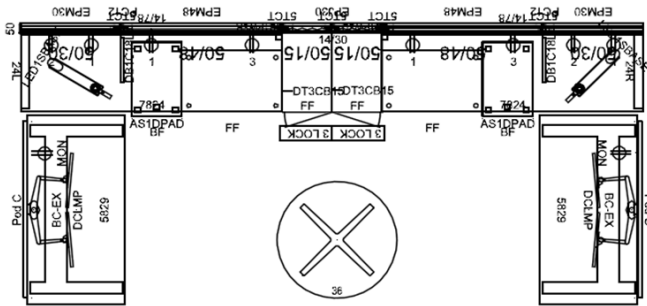
ITEM NAME: Workstation, Collaborative

ITEM CODE: W2

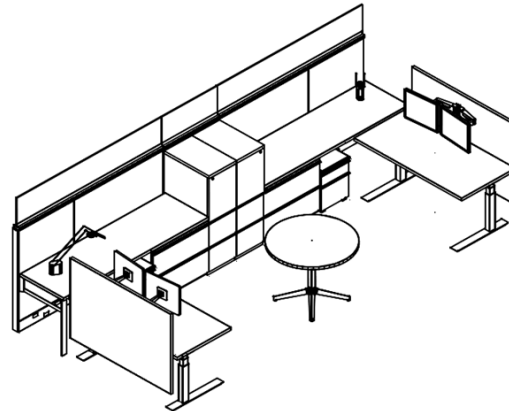
MANUFACTURER: Knoll

PRODUCT NAME: Dividends (panel system, 36" round table, and mobile peds), Tone (height adjustable tops and bases), Antenna (desk screen), Series 2 (tower), Knoll Extra (task light, and monitor arm)

PRODUCT #: See info on this data sheet for component requirements.



Plan (two workstations shown)



Isometric (two workstations shown)

DIMENSIONS: 7' 9" x 7' actual workstation dimension

FINISH: Plastic Laminate: Light Ash; Edge: Light Ash; Paint: Folkstone Grey

UPHOLSTERY: Screen: Pesto K1000/8, Color Red Carpet; Mobile Pedestal Cushion: Greenwich K1753/4, Color Sheridan; Panel Fabric: Circuit W1754/2, Color Frequency

DESCRIPTION:

- (2) 60" x 30" Tone extended range height adjustable tables with screen
- (2) 78" x 24" secondary work surfaces
- Monolithic 50"H panels with 14"H frameless glass stack ons
- (8) Duplex receptacles
- (2) Plug strips mounted to adjustable height tables (1 each)
- (2) Cable management baskets mounted to adjustable height tables (1 each)
- Wire clips (10) 5 per 78" surface
- (2) Mobile box/file peds with cushions and pencil trays
- (2) Sparrow desk lamps
- (2) Sapper dual monitor arms- clamp mount
- (2) Desktop power modules- clamp mount
- Key alike
- (2) 50"H bookcase towers with file/file
- (1) 36" Round meeting table

Zone 1 Quantity

0

Zone 2 Quantity

1

Zone 3 Quantity

0

TOTAL QUANTITY: 1

DATA SHEET

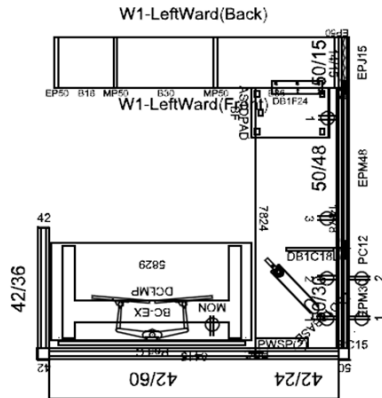
ITEM NAME: Workstation, Reception

ITEM CODE: W3

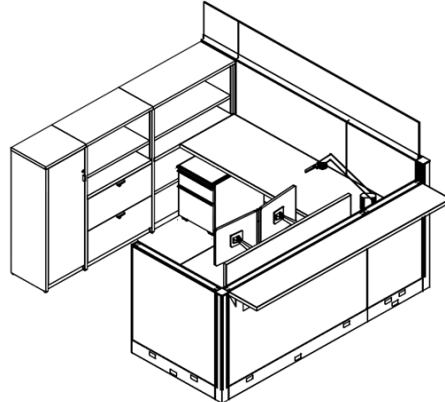
MANUFACTURER: Knoll

PRODUCT NAME: Template (storage), Dividends (panel system and mobile ped), Tone (height adjustable tops and bases), Antenna (desk screen), Knoll Extra (task light, and monitor arm)

PRODUCT #: See info on this data sheet for component requirements.



Plan



Isometric

DIMENSIONS: 7' 9" x 7' actual workstation dimension

FINISH: Plastic Laminate: Light Ash; Edge: Light Ash; Paint: Folkstone Grey

UPHOLSTERY: Screen: Pesto K1000/8, Color Red Carpet; Mobile Pedestal Cushion: Greenwich K1753/4, Color Sheridan; Panel Fabric: Circuit W1754/2, Color Frequency

DESCRIPTION:

- 60" x 30" Tone extended range height adjustable table with screen
- 78" x 24" Secondary work surface
- Monolithic 50"H panels with 14"H frameless glass stack ons on spine
- Monolithic 42"H panels with transaction top
- (4) Duplex receptacles
- Plug Strip mounted to adjustable height table
- Cable management basket mounted to adjustable height table
- Wire clips (5) per station
- Mobile box/file ped with cushion and pencil tray
- Sparrow desk lamp
- Sapper dual monitor arm- clamp mount
- Desktop power module- clamp mount
- Key alike
- Template storage wall: includes (4) file drawer partitions

Zone 1 Quantity

4

Zone 2 Quantity

3

Zone 3 Quantity

3

TOTAL QUANTITY: 10

DATA SHEET

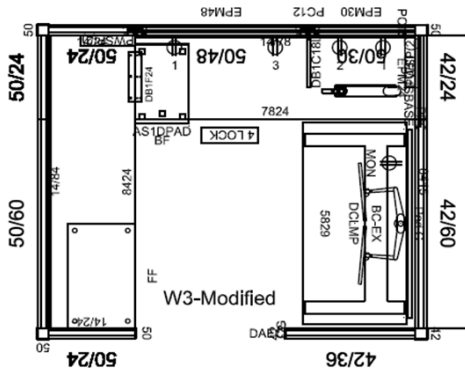
ITEM NAME: Workstation, Reception

ITEM CODE: W3 MODIFIED

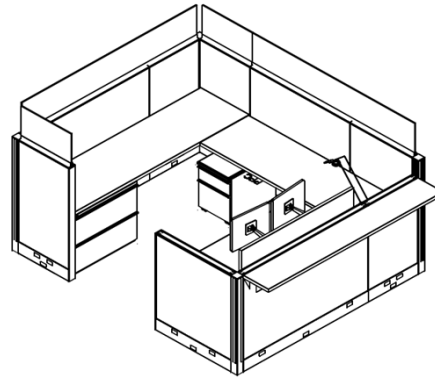
MANUFACTURER: Knoll

PRODUCT NAME: Template (storage), Dividends (panel system and mobile ped), Tone (height adjustable tops and bases), Antenna (desk screen), Knoll Extra (task light, and monitor arm)

PRODUCT #: See info on this data sheet for component requirements.



Plan



Isometric

DIMENSIONS: 7' 9" x 7' actual workstation dimension

FINISH: Plastic Laminate: Light Ash; Edge: Light Ash; Paint: Folkstone Grey

UPHOLSTERY: Screen: Pesto K1000/8, Color Red Carpet; Mobile Pedestal Cushion: Greenwich K1753/4, Color Sheridan; Panel Fabric: Circuit W1754/2, Color Frequency

DESCRIPTION:

- 60" x 30" Tone extended range height adjustable table with screen
- 78" x 24" Secondary work surface
- 84"x 24" back work surface
- Monolithic 50"H panels with 14"H frameless glass stack ons on spine
- Monolithic 42"H panles with transaction top
- (4) Duplex receptacles
- Plug Strip mounted to adjustable height table
- Cable management basket mounted to adjustable height table
- Wire clips (5) per station
- Mobile box/file ped with cushion and pencil tray
- Sparrow desk lamp
- Sapper dual monitor arm- clamp mount
- Desktop power module- clamp mount
- Key alike
- 36"W 2-drawer lateral file

Zone 1 Quantity

0

Zone 2 Quantity

1

Zone 3 Quantity

0

TOTAL QUANTITY: 1

DATA SHEET

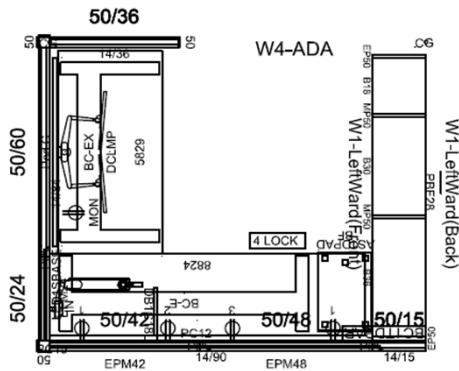
ITEM NAME: Workstation, ADA

ITEM CODE: W4

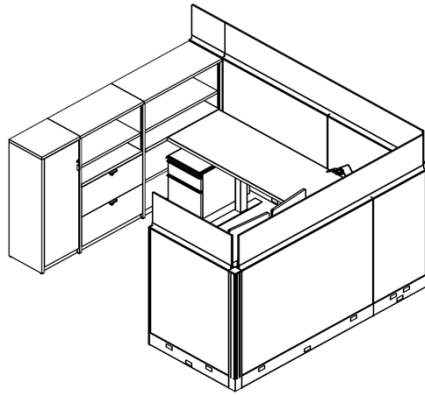
MANUFACTURER: Knoll

PRODUCT NAME: Template (storage), Dividends (panel system and mobile ped), Tone (height adjustable tops and bases), Antenna (desk screen), Knoll Extra (task light and monitor arm)

PRODUCT #: See info on this data sheet for component requirements.



Plan



Isometric

DIMENSIONS: 8' 9" x 7' actual workstation dimension

FINISH: Plastic Laminate: Light Ash; Edge: Light Ash; Paint: Folkstone Grey

UPHOLSTERY: Screen: Pesto K1000/8, Color Red Carpet; Mobile Pedestal Cushion: Greenwich K1753/4, Color Sheridan; Panel Fabric: Circuit W1754/2, Color Frequency

DESCRIPTION: ADA Workstation

- 60" x 30" Tone extended range adjustable height table with screen
- 90" x 24" Tone extended range adjustable height table
- Monolithic 50"H panels with 14"H frameless glass stack ons
- (4) Duplex receptacles
- (2) Plug strips mounted to adjustable height tables
- (2) Cable managment baskets mounted to adjustable height tables
- Mobile box/file ped with cushion and pencil tray
- Sparrow desk lamp
- Sapper dual monitor arm- clamp mount
- Desktop power module- clamp mount
- Key alike
- Template storage wall: includes (4) file drawer partitions

Zone 1 Quantity

1

Zone 2 Quantity

2

Zone 3 Quantity

0

TOTAL QUANTITY: 3

DATA SHEET

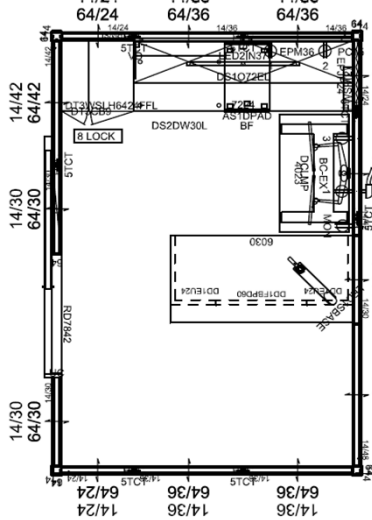
ITEM NAME: Workstation, Supervisory

ITEM CODE: W5

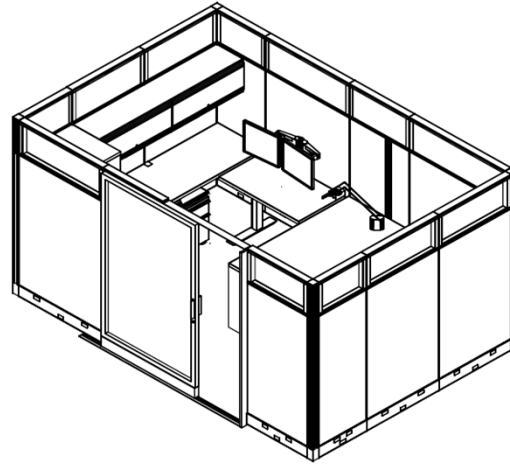
MANUFACTURER: Knoll

PRODUCT NAME: Template (storage), Dividends (panel system and mobile ped), Tone (height adjustable tops and bases), Antenna (desk screen), Series 2 (tower) ,Knoll Extra (task light and monitor arm)

PRODUCT #: See info on this data sheet for component requirements.



Plan



Isometric

DIMENSIONS: 8' x 12' overall dimension

FINISH: Plastic Laminate: Light Ash; Edge: Light Ash; Paint: Folkstone Grey

UPHOLSTERY: Mobile Pedestal Cushion: Greenwich K1753/4, Color Sheridan;
Panel Fabric: Circuit W1754/2, Color Frequency

DESCRIPTION:

- 60" x 30" Desk with end units and modesty panel
- 42" x 24" Tone extended adjustable height table
- 72" x 24" back work surface

Monolithic 64"H panels with 14"H window stack on, locking glass rolling door (78"H)

- (4) Duplex receptacles
- strip mounted to adjustable height table
- management basket mounted to adjustable height table
- box/file ped with cushion and pencil tray
- drawer lateral file
- mount touchdown overhead with LED task light and vertical dividers
- desk lamp
- module- clamp mount

- 64"H Storage tower with file/file, hinged door above and wardrobe with coat bar

- Plug

- Cable

- Mobile

- 30"W 2-

- 72"W panel

- Sparrow

- Desktop power

- Key alike

Zone 1 Quantity

7

Zone 2 Quantity

11

Zone 3 Quantity

12

TOTAL QUANTITY: 30

MVS Space Utilization

St. Louis, MO

DATA SHEET

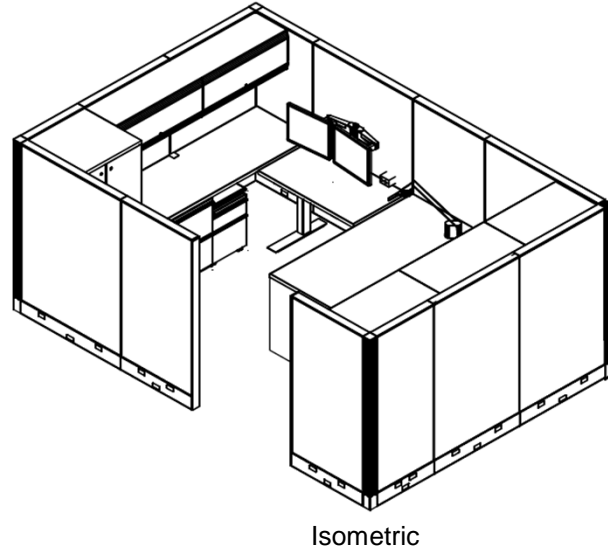
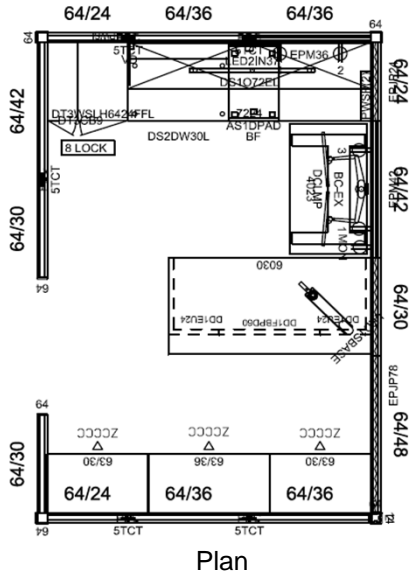
ITEM NAME: Workstation, Specialty

ITEM CODE: W6

MANUFACTURER: Knoll

PRODUCT NAME: Template (storage), Dividends (panel system and mobile ped), Tone (height adjustable tops and bases), Antenna (desk screen), tower, Calibre (lateral files), Knoll Extra (task light and monitor arm)

PRODUCT #: See info on this data sheet for component requirements.



DIMENSIONS: 8' x 12' overall dimension

FINISH: Plastic Laminate: Light Ash; Edge: Light Ash; Paint: Folkstone Grey

UPHOLSTERY: Mobile Pedestal Cushion: Greenwich K1753/4, Color Sheridan;
Panel Fabric: Circuit W1754/2, Color Frequency

DESCRIPTION:

- 60" x 30" Desk with end units and modesty panel
- 42" x 24" Tone extended range adjustable height table
- 72" x 24" back work surface

Monolithic 64"H panels

Duplex receptacles

mounted to adjustable height table

management basket mounted to adjustable height table

box/file ped with cushion and pencil tray

Drawer lateral file

mount touchdown overhead with LED task light and vertical dividers

desk lamp

monitor arm- clamp mount

tower with file/file, hinged door above and wardrobe with coat bar

Drawer lateral file, and (1) 36"W 5-Drawer lateral file

-
- (4)
- Plug strip
- Cable
 - mobile
 - 30"W 2-
 - 72"W panel
 - Sparrow
 - Sapper dual
- 64"H Storage
 - (2) 30"W 5-

Zone 1 Quantity

8

Zone 2 Quantity

4

Zone 3 Quantity

7

TOTAL QUANTITY: 19

MVS Space Utilization

St. Louis, MO

DATA SHEET

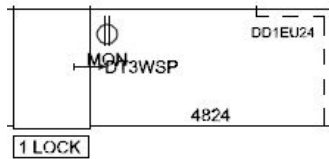
ITEM NAME: Workstation, Hoteling

ITEM CODE: W7

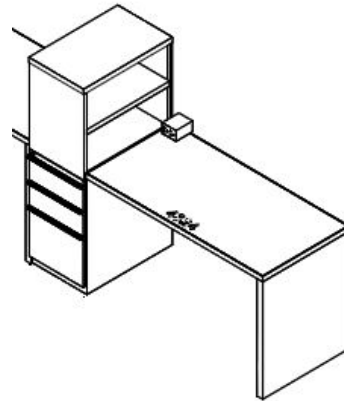
MANUFACTURER: Knoll

PRODUCT NAME: Dividends (worksurfaces and supports), Series 2 (bookcase tower)

PRODUCT #: See info on this data sheet for component requirements.



Plan



Isometric

DIMENSIONS: 5' 3"w x 2'd overall dimension

FINISH: Plastic Laminate: Light Ash; Edge: Light Ash; Paint: Folkstone Grey

UPHOLSTERY: N/A

DESCRIPTION:

- 48" x 24" Desk with end unit
- 50"H side access bookcase tower with box/box/file ped and pencil tray
- Desktop power module- clamp mount

Zone 1 Quantity

7

Zone 2 Quantity

7

Zone 3 Quantity

6

TOTAL QUANTITY: 20

DATA SHEET

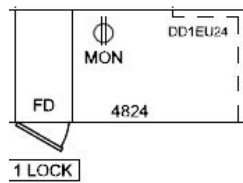
ITEM NAME: Workstation, EOC

ITEM CODE: W8

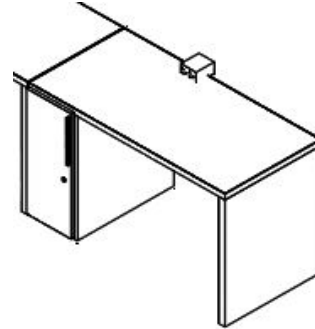
MANUFACTURER: Knoll

PRODUCT NAME: Dividends (worksurfaces and supports), Anchor (storage pedestal)

PRODUCT #: See info on this data sheet for component requirements.



Plan



Isometric

DIMENSIONS: 4'w x 2'd

FINISH: Plastic Laminate: Light Ash; Edge: Light Ash; Paint: Folkstone Grey

UPHOLSTERY: N/A

DESCRIPTION: Provide workstation with:

- 48" x 24" work surface with end unit
- Desktop power module- clamp mount
- 12"W hinged door under- counter cabinet

Zone 1 Quantity

0

Zone 2 Quantity

0

Zone 3 Quantity

4

TOTAL QUANTITY: 4

DATA SHEET

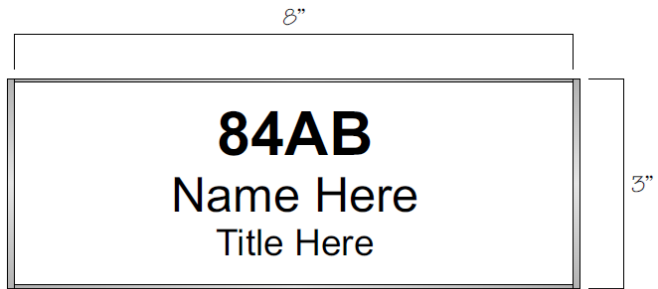
ITEM NAME: Workstation Signage, Magnetic Mount

ITEM CODE: W9

MANUFACTURER: Appenx

PRODUCT NAME: Outsert Modular Signage

PRODUCT #: B9001.C0308MWT-AL
STD3.AL-CLP



DIMENSIONS: 8"w x 3/16"d x 3"h

FINISH: Silver

UPHOLSTERY: N/A

DESCRIPTION: Provide workstation signage with:

- changeable text using paper inserts with a protective lens
- clip on edge caps
- standard square end caps
- room for 2 or 3 lines of copy
- .050 thick 6063-T5 extruded aluminum
- magnetic mount for open office workstations excluding Supervisory, Specialty and Hoteling
- coordinate text message (personnel name, job position/office and system for workstation location numbering), font size and number of lines required on signs with User

Zone 1 Quantity:

100

Zone 2 Quantity

81

Zone 3 Quantity

91

TOTAL QUANTITY: 272

DATA SHEET

ITEM NAME: Workstation Signage, Panel Mount

ITEM CODE: W9A

MANUFACTURER: Appenx

PRODUCT NAME: Outsert Modular Signage

PRODUCT #: B9001.C0308EWT-AL
STD3.AL-CLP



DIMENSIONS: 8"w x 3/16"d x 3"h

FINISH: Silver

UPHOLSTERY: N/A

DESCRIPTION: Provide workstation signage with:

- changeable text using paper inserts with a protective lens
- clip on edge caps
- standard square end caps
- room for 2 or 3 lines of copy
- .050 thick 6063-T5 extruded aluminum
- Pin mount into panel
- coordinate text message (personnel name, job position/office and system for workstation location numbering), font size and number of lines required on signs with User

Zone 1 Quantity

15

Zone 2 Quantity

16

Zone 3 Quantity

23

TOTAL QUANTITY: 54

DATA SHEET

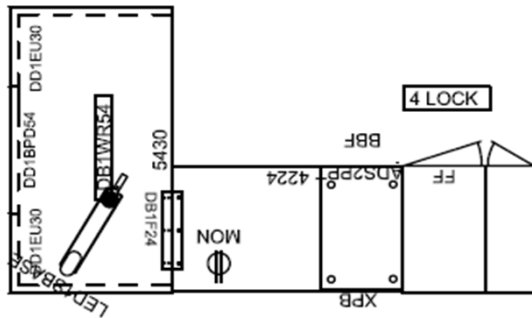
ITEM NAME: Workstation, CAC Room

ITEM CODE: W12

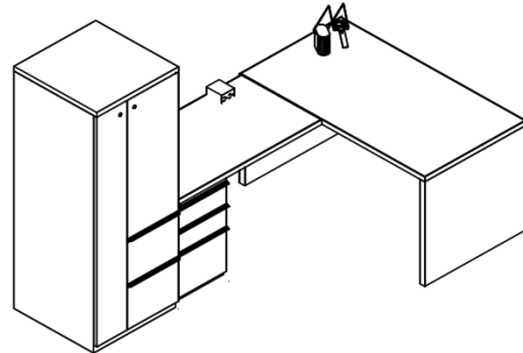
MANUFACTURER: Knoll

PRODUCT NAME: Dividends (worksurfaces and supports), Autostrada (modesty panel), Knoll Extra (monitor arm and tasklight), Series 2 (tower)

PRODUCT #: See info on this data sheet for component requirements.



Plan



Isometric

DIMENSIONS: 8'w x 4' 6"d overall dimension

FINISH: Plastic Laminate: Light Ash; Edge: Light Ash; Paint: Folkstone Grey

UPHOLSTERY: N/A

DESCRIPTION:

- 54" x 30" worksurface with end units and modesty panel
- 48" x 24" worksurface
- Box/box/file pedestal with pencil tray
- 64"H Storage tower with file/file, hinged door above and wardrobe with coat bar
- Sparrow desk lamp
- desktop power module- clamp mount

Zone 1 Quantity

0

Zone 2 Quantity

0

Zone 3 Quantity

1

TOTAL QUANTITY: 1