

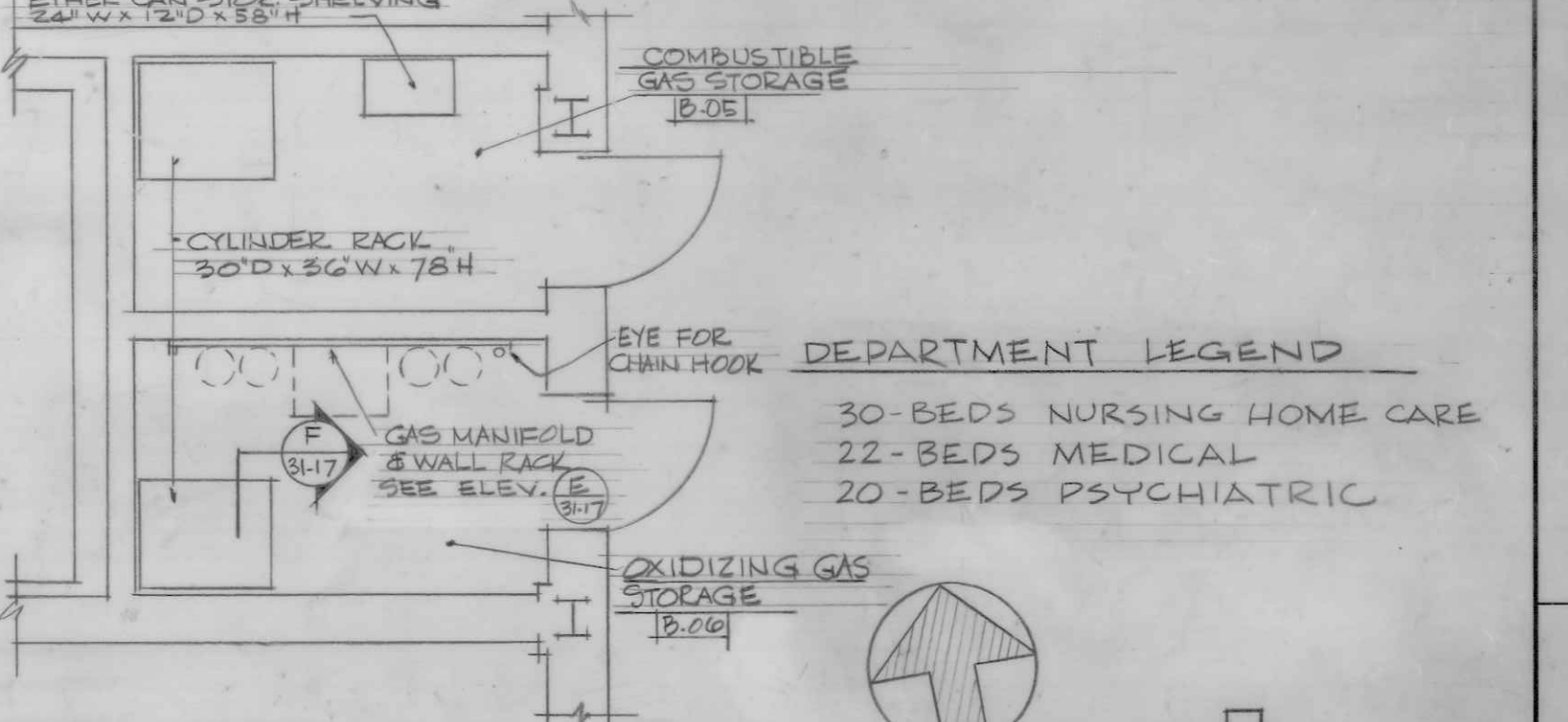
- ### GENERAL NOTES
- INTERIOR PARTITIONS TO BE METAL STUDS WITH GYPSUM WALLBOARD OR METAL LATH & PLASTER, ALSO C.M.U. SEE DWG. 31-14 FOR DETAILS.
  - SHAFTS & PIPE SPACES TO BE CONCRETE MASONRY UNITS (C.M.U.) SEE PLANS FOR THICKNESS.
  - FIRE PARTITIONS (F.P.) TO EXTEND TO BOTTOM OF METAL DECK OR ROOF DECK ABOVE ADJACENT PARTITIONS TO BE SEALED AND PROTECTED TO MAINTAIN A 2 HR. FIRE RATING. IN ROOMS WHERE FIRE PARTITIONS OCCUR, BUT DO NOT CONTINUE ALONG THE ENTIRE LENGTH OF A WALL, THE DOUBLE LAYER OF GYPSUM WALLBOARD WILL BE CONTINUED TO THE NEXT CORNER OR TERMINATION POINT OF THE WALL. DOOR FRAMES IN THESE WALLS MUST BE SIZED ACCORDINGLY TO RECEIVE THE DOUBLE LAYER.
  - ALL CEILING HEIGHTS TO BE 8'-0" UNLESS NOTED OTHERWISE ON THE PLANS.
  - SEE SPECIFICATIONS RELATIVE TO THE FURNISHING AND INSTALLATION OF ALL EQUIPMENT REQUIRED.
  - ALL VERTICAL AND HORIZONTAL PIPES, DUCTS AND CONDUITS IN FINISHED ROOMS SHALL BE FURRED IN. FINISH OF FURRING TO MATCH ROOM FINISH.
  - PROVIDE ACCESS DOORS (A.D.) OR ACCESS PANELS (A.P.) WHERE INDICATED, SIZE 18" WIDE X 14" HIGH EXCEPT WHERE OTHERWISE NOTED, FOR LOCATION OF HEATING & VENTILATING ACCESS PANELS IN SUSPENDED CEILINGS, SEE SPECIFICATIONS. PROVIDE 24" X 24" ACCESS PANELS IN SUSPENDED CEILINGS WHERE PLUMBING VALVES, WATER SWITCHES, OXYGEN PRESSURE SWITCHES, ETC. ARE SHOWN ON PLUMBING DRAWINGS. SEE SPECIFICATIONS FOR IDENTIFICATION PLATES TO BE ATTACHED TO THE SUSPENDED ACCESSIBLE TUB CEILING UNITS OCCURRING WHERE ACCESS TO PLUMBING, HEATING AND VENTILATING EQUIPMENT IS REQUIRED.
  - ALL SPACES ABOVE THE BASEMENT FLOOR HAVING FLOOR DRAINS SHALL HAVE MEMBRANE WATERPROOFING.
  - FOR ROOM FINISHES AND COLORS CONSULT FINISH SCHEDULE AND COLOR SCHEDULE SECTION OF SPECIFICATIONS.
  - CONSULT WINDOW TYPES FOR LOCATION OF WINDOWS THAT RECEIVE INTEGRAL VENEETIAN BLINDS.
  - DOORS IN CORRIDOR WALLS OR DOORS TO BE OPERABLE FROM EITHER SIDE.
  - UNLESS OTHERWISE NOTED, ALL DOORS & FRAMES TO BE HOLLOW METAL.
  - PROVIDE CERAMIC TILE PANELS AT BACK OF LAVATORIES WHERE THEY OCCUR IN ROOMS WITH PLASTER, GYPSUM WALLBOARD OR EXPOSED MASONRY WALLS - SEE DETAILS.
  - FOR TOILET ROOM LAYOUTS SEE DRAWINGS 31-19 & 31-19A.
  - PATIENTS TOILETS SHARED BY MORE THAN ONE BEDROOM ARE TO HAVE 2" OF INSULATION ABOVE CEILING PANELS OVER LAPPING 12" ON ALL SIDES.

### ARCHITECTURAL MATERIAL LEGEND:

	CONCRETE		BRICK		METAL (LARGE SCALE) (ELEV.)		PLYWOOD
	PRECAST STONE		CONCRETE MASONRY UNIT		METAL (SMALL SCALE) (ELEV.)		STRUCTURAL WOOD
	GRAVEL		CERAMIC TILE		LEAD		INSULATION (BLANKET)
	EARTH		RUBBER		FINISHED WOOD		INSULATION (RIGID)

### INTERIOR PARTITION LEGEND:

	METAL STUDS & PLASTER OR GYPSUM WALLBOARD - CEILING HEIGHT.
	METAL STUDS & PLASTER OR GYPSUM WALLBOARD - FULL HEIGHT 2 HR. FIRE RATED PARTITION.
	METAL STUDS & PLASTER OR GYPSUM WALLBOARD - FULL HEIGHT PARTITION.
	CONCRETE MASONRY UNIT WALL - FULL HEIGHT PARTITION.
	CONCRETE MASONRY UNIT WALL - FULL HEIGHT 2 HR. FIRE RATED PARTITION.
	LEAD LINED - LEAD LINED GYPSUM LATH & PLASTER AND GYPSUM WALLBOARD.



**GROUND FLOOR PLAN**  
**BUILDING NO. 31**  
**NEW 204 BED HOSPITAL BUILDING**

VETERANS ADMINISTRATION  
WHITE RIVER JUNCTION, VERMONT

Drawn: R.C.S. Proj. Mgr.: J.M.B.  
Checked: R.C.S. Date: Oct. 27, 71

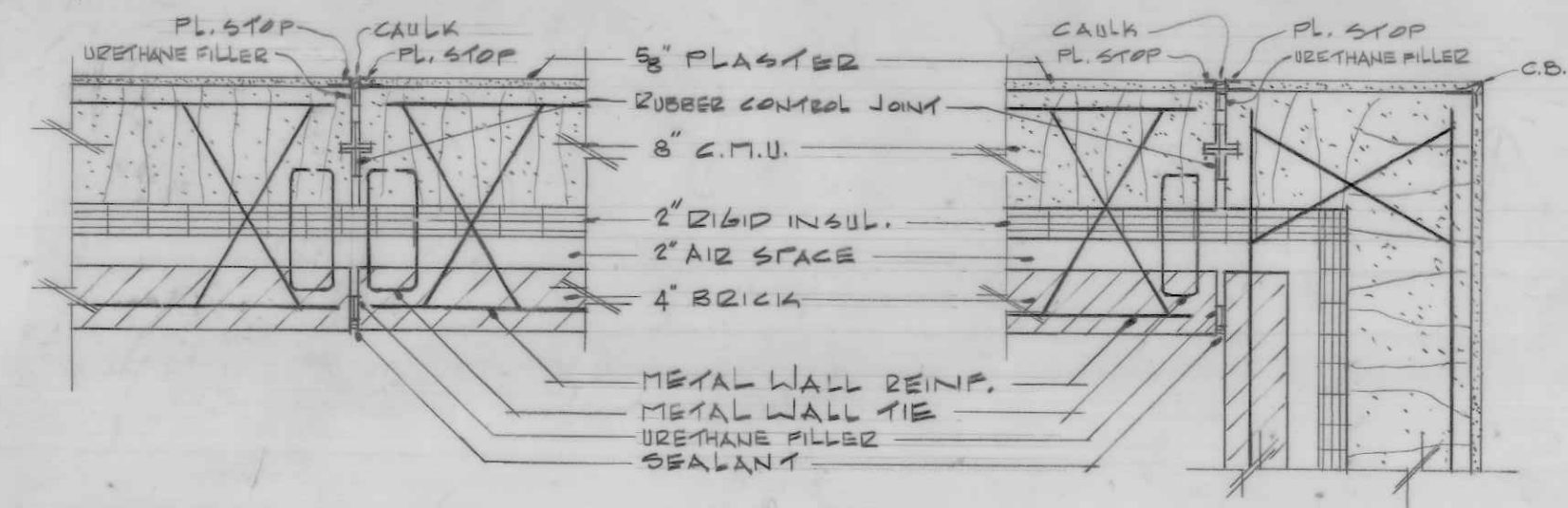
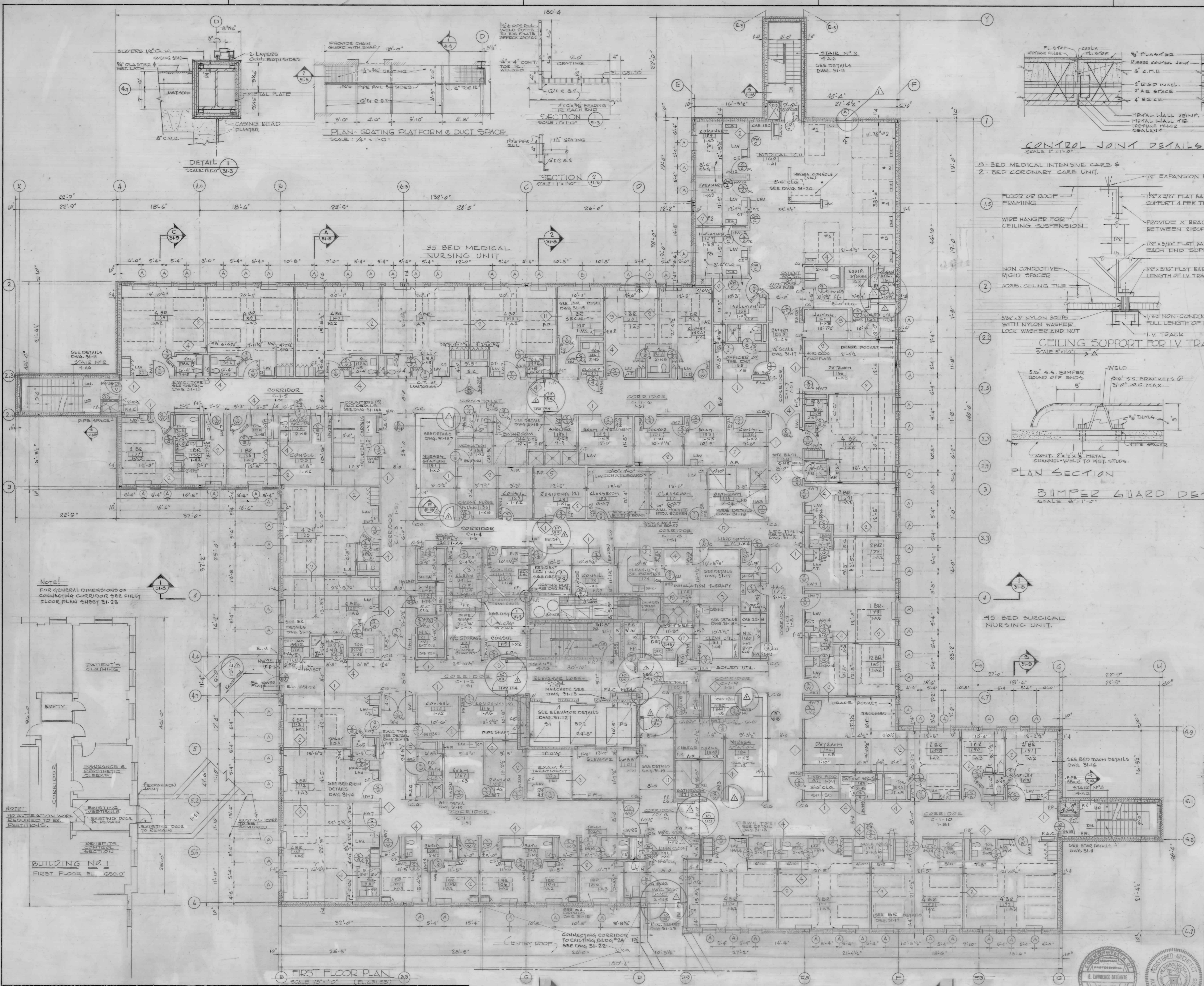
**BELLANTE CLAUS MILLER & NOLAN**  
ARCHITECTS ENGINEERS PLANNERS  
130 NORTH WASHINGTON AVE. SCRANTON, PA.

REVISIONS  
No. Date Description  
1 10/27/71 R.C.S. R.C.S.

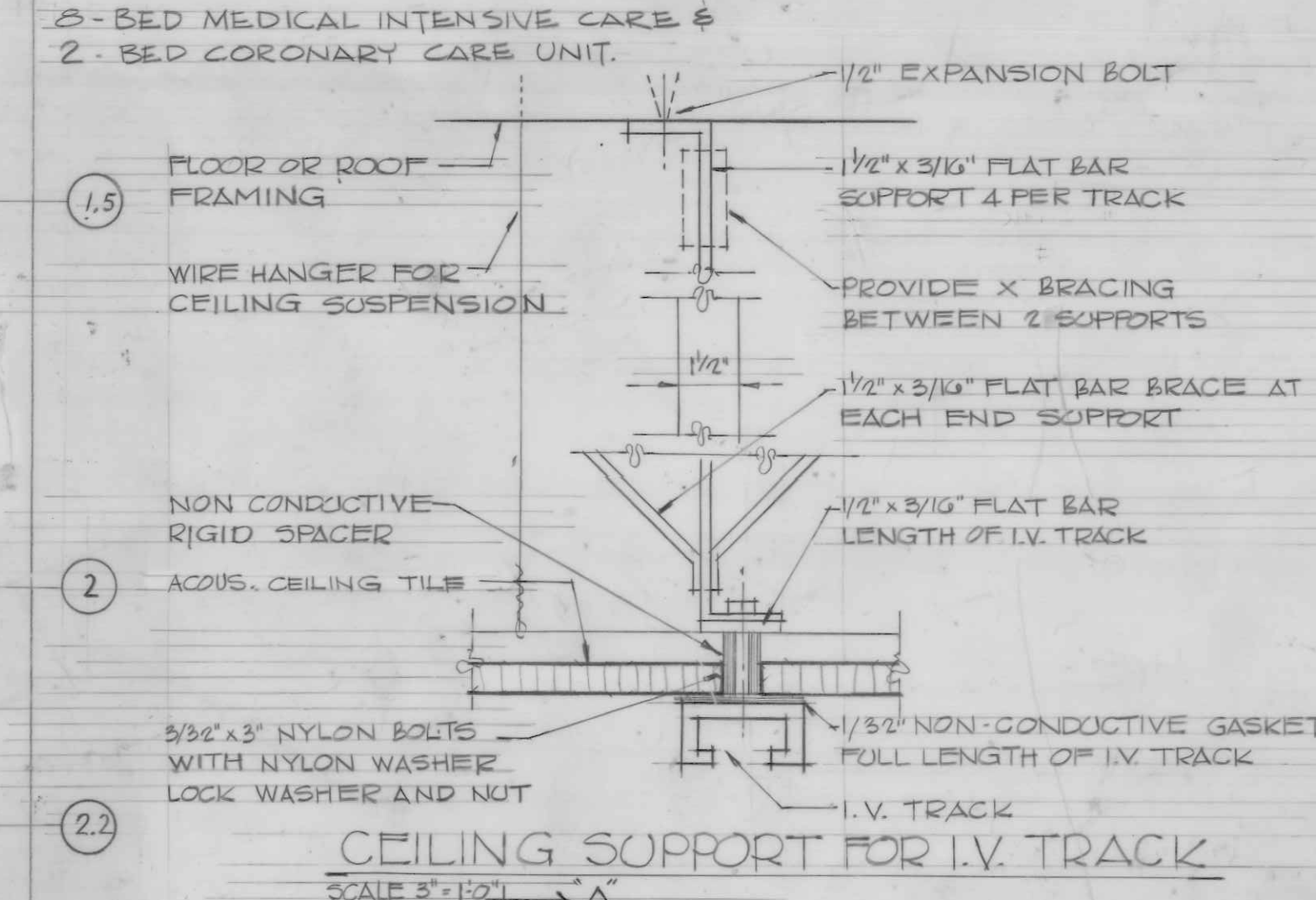
DRAWING NUMBER  
**31-2**  
Sheet 1 of 3  
Proj. No. 44-20.3

ONE EIGHTH INCH EQUALS ONE FOOT  
0 4 8 12 16 20 24 28 32 36  
ONE QUARTER INCH EQUALS ONE FOOT  
0 4 8 12 16 20 24 28 32 36  
ONE INCH EQUALS ONE FOOT  
0 4 8 12 16 20 24 28 32 36

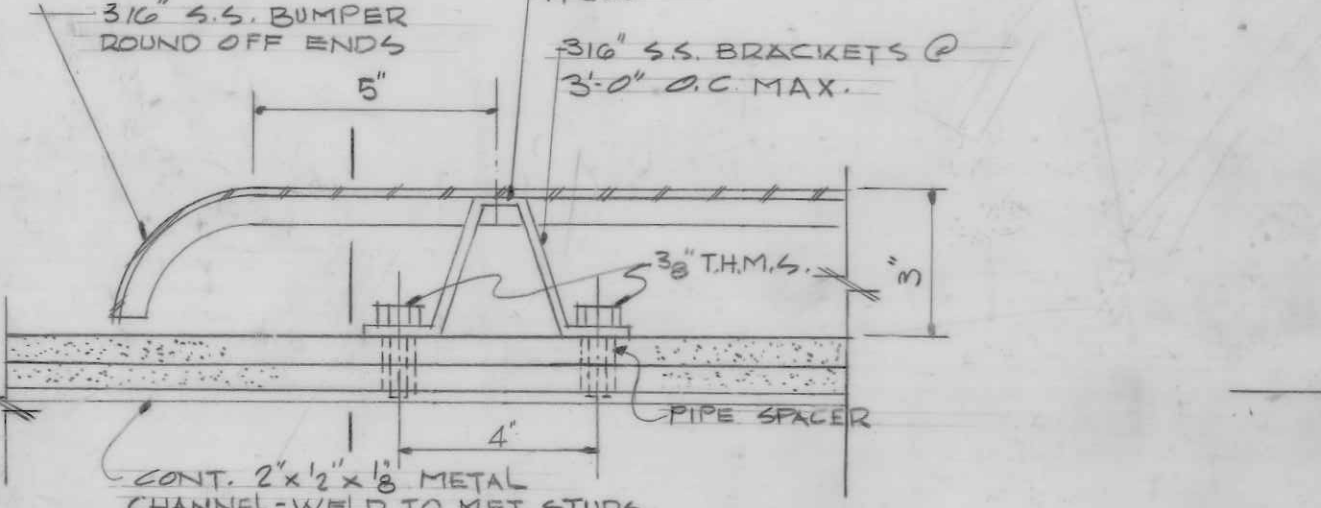




CONTROL JOINT DETAILS  
SCALE 1/4" = 1'-0"



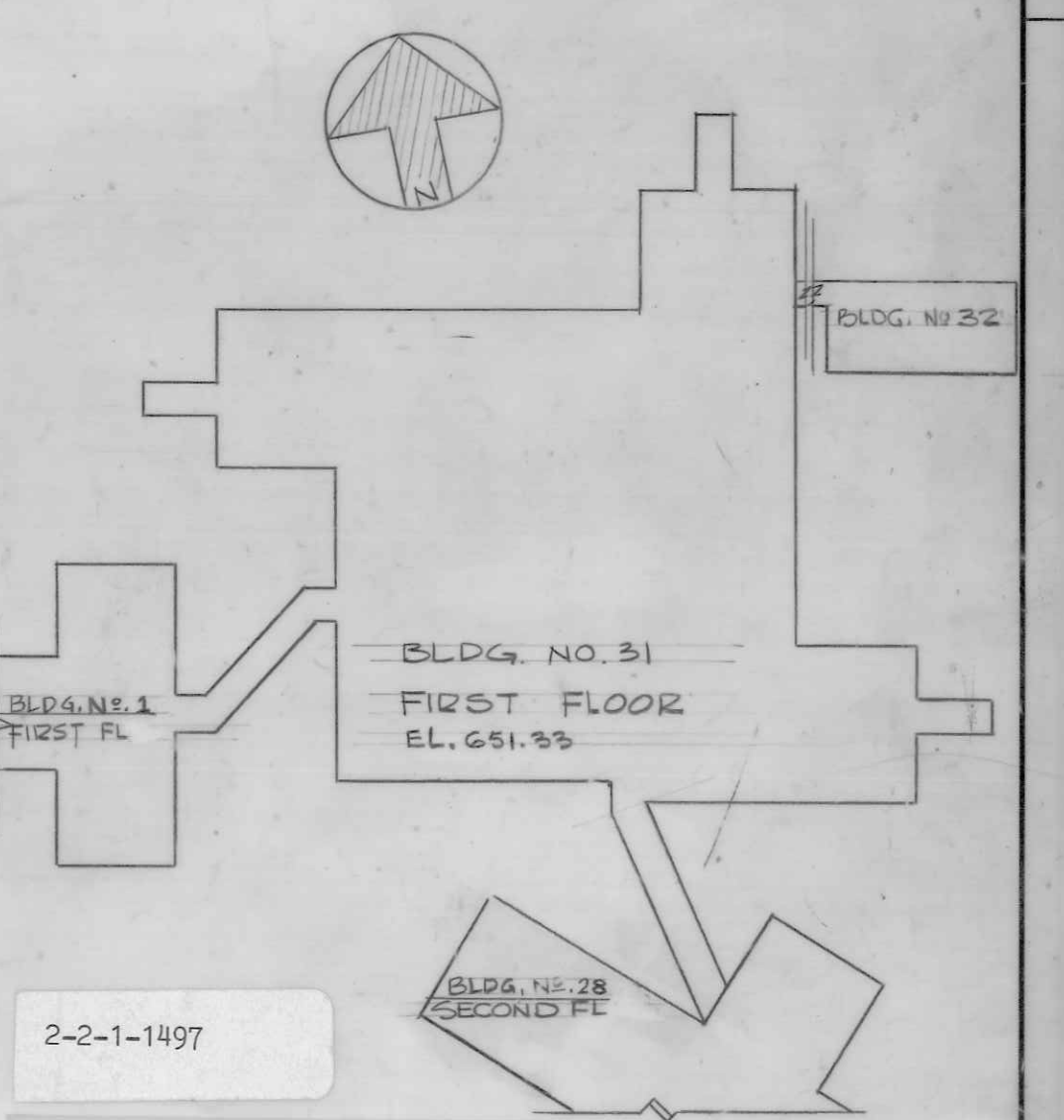
CEILING SUPPORT FOR I.V. TRACK  
SCALE 3/4" = 1'-0"



BIMPER GUARD DETAILS  
SCALE 3/4" = 1'-0"

SECTION A

DEPARTMENT LEGEND  
35-BED MEDICAL NURSING UNIT  
45-BED SURGICAL NURSING UNIT  
MEDICAL INTENSIVE CARE &  
'CORONARY CARE UNIT



FIRST FLOOR PLAN BUILDING NO. 31 NEW 204 BED HOSPITAL BUILDING VETERANS ADMINISTRATION WHITE RIVER JUNCTION, VERMONT			
Drawn: RC	Proj. Mgr.: S.M.B.	REVISIONS	
Checked: R.S.H.	Date: 01-27-71	No.	Date
BELLANTE CLAUSSE MILLER & NOLAN ARCHITECTS ENGINEERS PLANNERS 130 NORTH WASHINGTON AVE. SCRANTON, PA.		AS BUILT	
DRAWING NUMBER 31-3		Sheet: 1 of 1	
Proj. No. 44-5023			

ONE EIGHTH INCH EQUALS ONE FOOT  
ONE QUARTER INCH EQUALS ONE FIVE INCH EQUALS ONE FOOT  
THREE INCHES EQUALS ONE FOOT

RETURN - TRACINGS TO PLAN LIBRARY

FILE FOLDER NO. 2

31-3  
1st Fl. Plan  
31-3



