

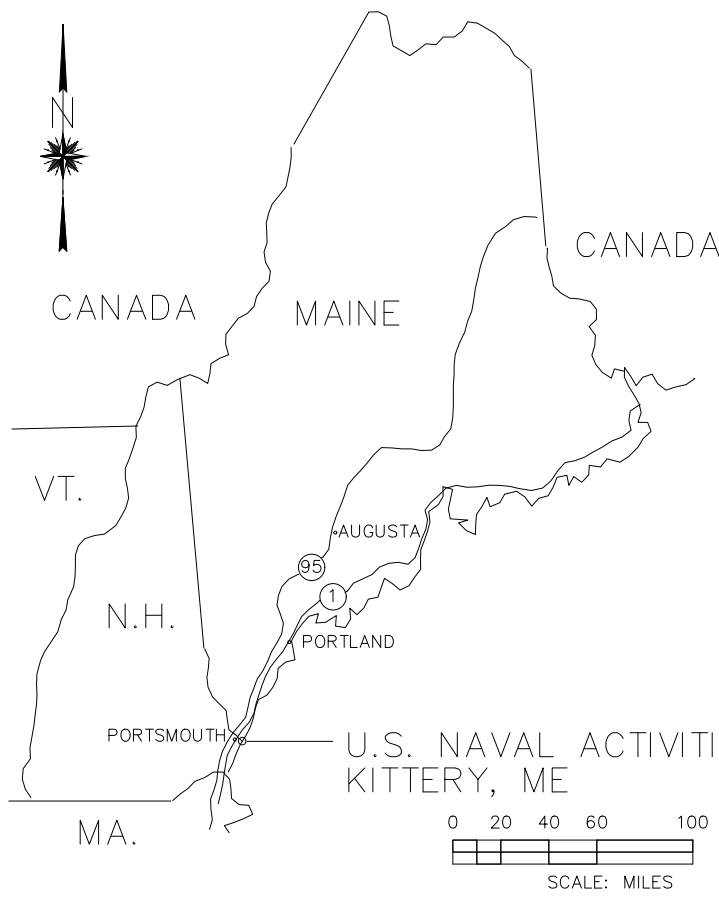
FILE NAME: C:\Users\Louis.dionasso\AppData\Local\Temp\AcPublish_1466A\2019_1618057_Bldg 79 Repair Roof and Repair Brick Wall Over 1st Floor - Mod 2.dwg LAYOUT NAME: C001 PLOTTED: Thursday, September 29, 2022 - 12:47pm USER: louis.dionasso

PORTSMOUTH NAVAL SHIPYARD KITTERY, ME

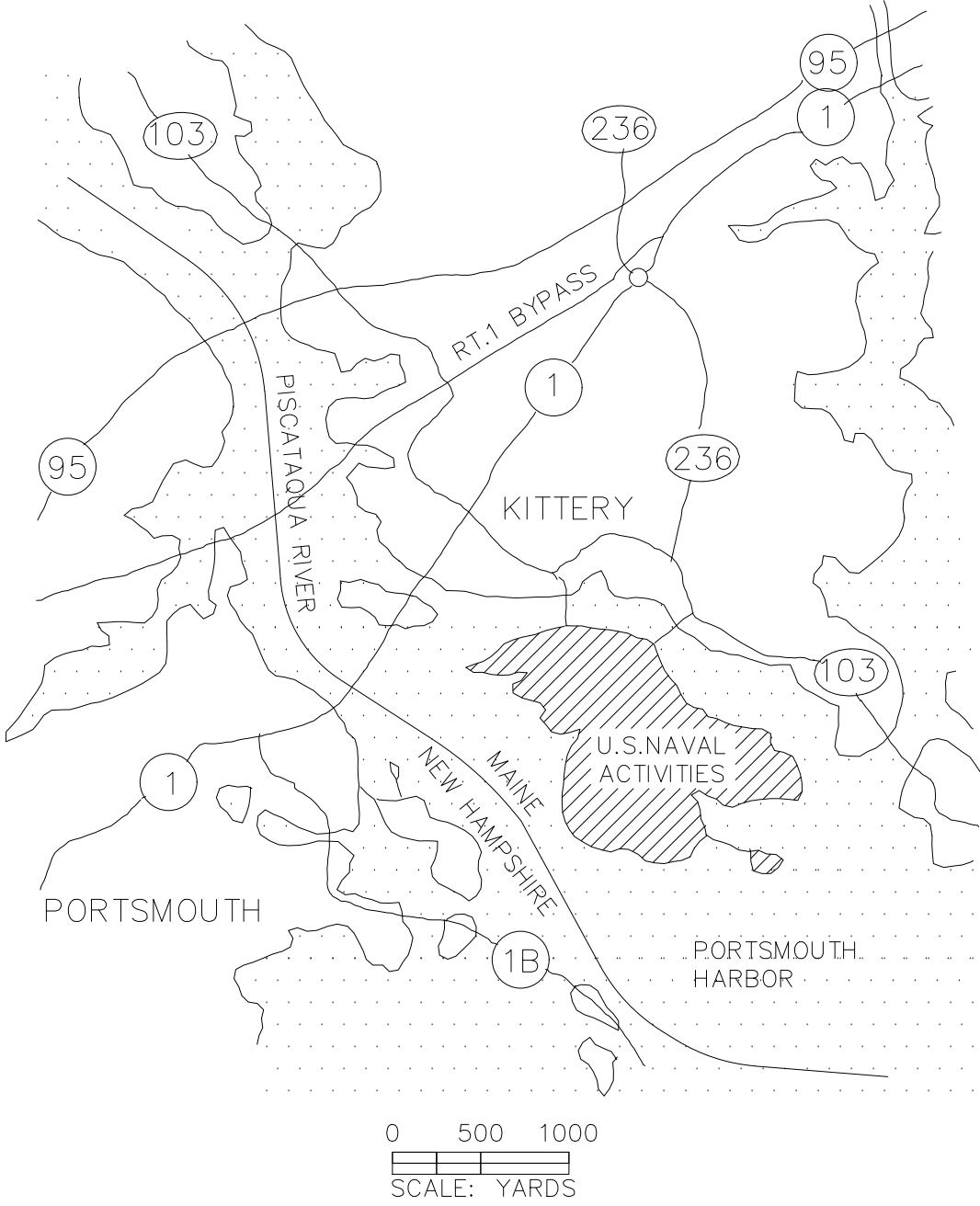
BLDG 79 2ND & 3RD FLOOR RENOVATIONS — OPTION 2

LIST OF DRAWINGS

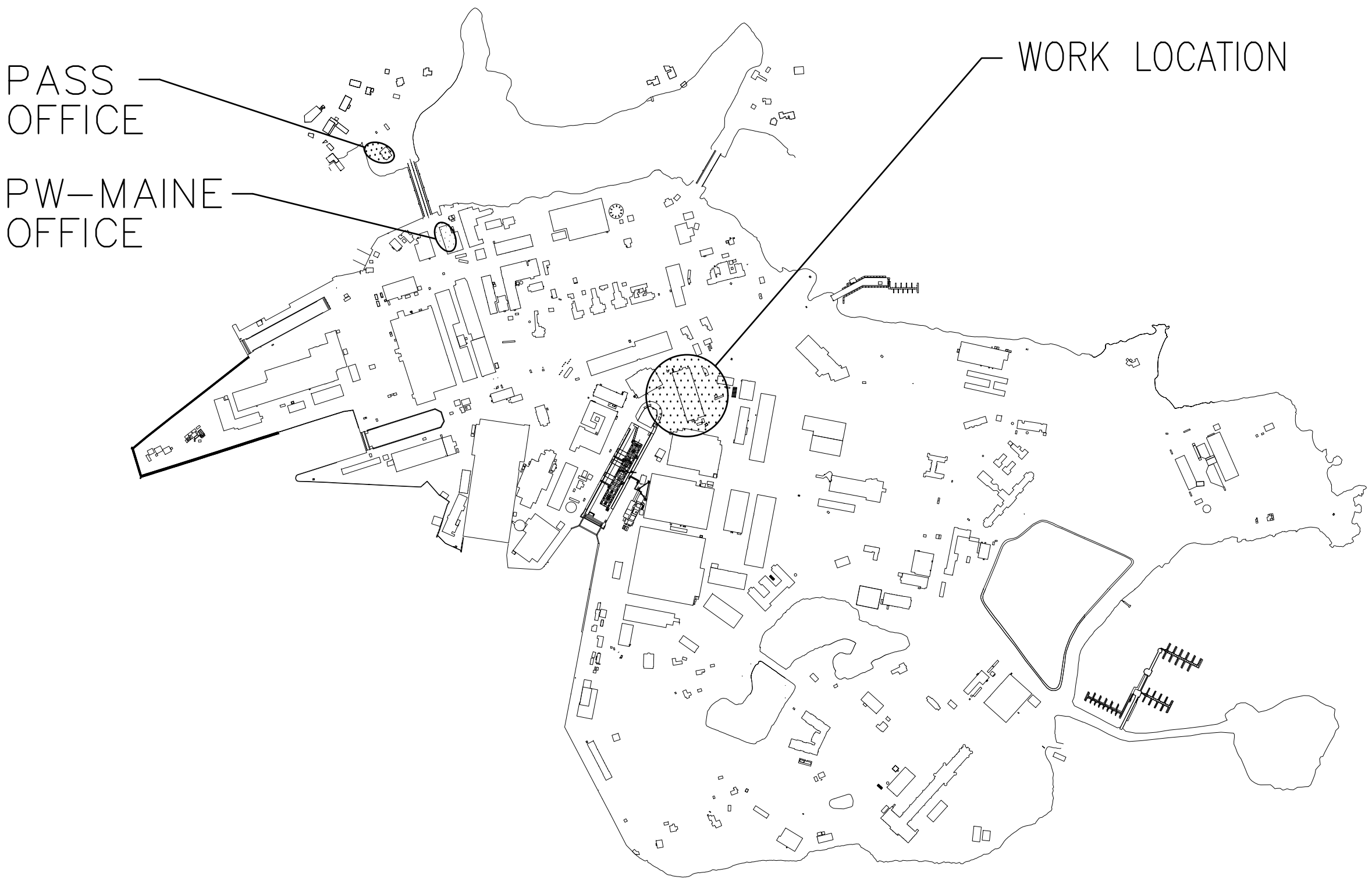
SHEET	SHEET NO.	PWD-ME NO.	NAVFAC DWG. NO.	DRAWING TITLE
1 OF 6	G001	XXX-XX-XXX	1591147	TITLE SHEET
2 OF 6	G002		1591148	GENERAL NOTES
3 OF 6	G101		1591149	LAYDOWN PLAN
4 OF 6	A101		1591150	ROOF PLAN
5 OF 6	A201		1591151	EXTERIOR ELEVATIONS
6 OF 6	A501		1591152	DETAIL



AREA MAP

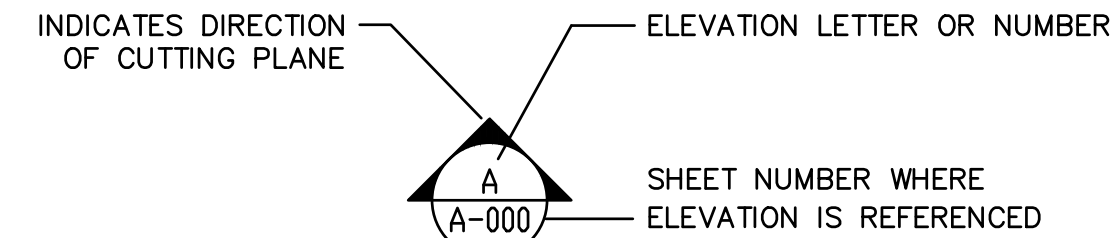


VICINITY MAP

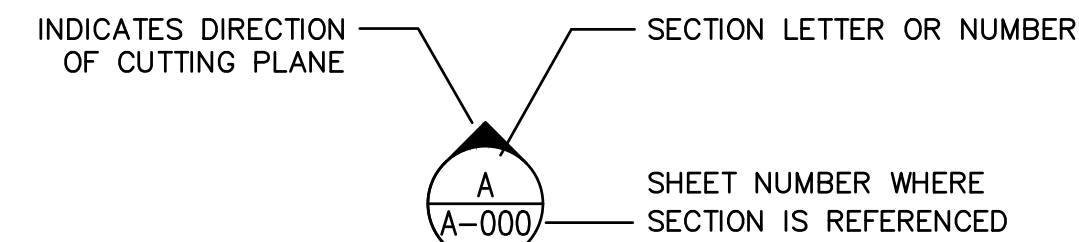


SITE PLAN
NOT TO SCALE

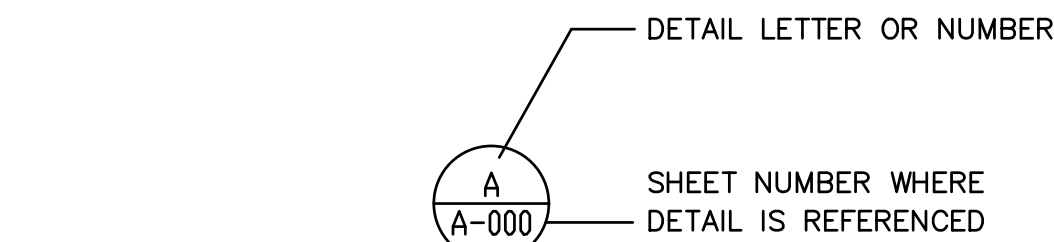
ELEVATION, SECTION OR DETAIL SYMBOLS



ADDITIONAL SHEET REFERENCES
C-102
ELEVATION



ADDITIONAL SHEET REFERENCES
C-102
SECTION



ADDITIONAL SHEET REFERENCES
C-102
DETAIL

SYN	DESCRIPTION	DATE	APP
1	OPTION 2	09/27/2022	DD
0	ISSUED FOR BID	MM/DD/YYYY	DM



APPROVED
FOR COMMANDER NAVFAC

ACTIVITY

SATISFACTORY TO DATE

DESIGNER DON DRIVER

DRAWN BY DAVID HICKMAN

CHECKED BY DAVID HOPPER

DESIGN MANAGER DON DRIVER

PROJECT MANAGER DAVID HOPPER

READ/PM/ME JEFF HOYT

FIRE PROTECTION XXX

DEPARTMENT OF THE NAVY
NAVAL FACILITIES ENGINEERING COMMAND
PUBLIC WORKS DEPARTMENT - MAINE
PORTSMOUTH NAVAL SHIPYARD
KITTERY, MAINE
B79 2ND & 3RD FLOOR RENOVATIONS
— OPTION 2
TITLE SHEET

PROJECT NO.: 1618057

NAVFAC DRAWING NO.
1591147

SHEET ## OF ##

G001 FAC-YR-NUM

DRAWING REVISION: DECEMBER 2018

FILE NAME: C:\Users\Louis.dromasoo\AppData\Local\Temp\AcPublish_1466A\2019_1618057_Bldg 79 Repair Roof and Repair Brick Wall Over 1st Floor - Mod 2.dwg LAYOUT NAME: C002 PLOTTED: Thursday, September 29, 2022 - 12:47pm USER: louis.dromasoo

GENERAL NOTES

1.

PLANS HAVE BEEN COMPILED FROM EXISTING RECORD PLANS, ON-SITE FIELD SURVEY AND OBSERVATION.
2.

UNLESS OTHERWISE NOTED, ALL EXISTING FEATURES DESIGNATED ON THE PLANS TO REMAIN INCLUDING, BUT NOT LIMITED TO, TREES, SIGNS, SIGN POSTS, CURBS, SIDEWALKS AND BACK OF SIDEWALK FEATURES MUST BE VERIFIED, LOCATED, AND PROTECTED DURING ALL PHASES OF CONSTRUCTION.
3.

PREVENT ANY DISTURBANCE OR DAMAGE TO ADJACENT PROPERTIES.
4.

YELLOW PLASTIC:
DO NOT USE YELLOW OR ORANGE-YELLOW COLORED MATERIALS FOR THE FOLLOWING PURPOSES: PROTECTIVE CLOTHING, HOODS, SHEETING, TARPS, POLYETHYLENE BOTTLES OR OTHER CONTAINERS, TAPES, BAGS, BANDING, IDENTIFICATION MARKS ON TOOLS, BOUNDARY MARKERS, RIBBONS, VENT DUCTS, ETC. CONTRACTOR GENERATED YELLOW COLORED WASTE MUST BE DISPOSED OF BY THE CONTRACTOR OFF-YARD. SHIPYARD REFUSE CONTAINERS MUST NOT BE USED FOR THE DISPOSAL OF YELLOW COLORED WASTE MATERIALS. YELLOW COLORED ITEMS SUCH AS DESCRIBED ABOVE ARE OF SPECIAL SIGNIFICANCE WITHIN THE SHIPYARD AND ARE SUBJECT TO STRICT CONTROLS. YELLOW COLORED CONTRACT GENERATED DEBRIS MUST BE BAGGED IN NON-TRANSLUCENT CONTAINERS, AND PROMPTLY REMOVED FROM PORTSMOUTH NAVAL SHIPYARD.
5.

REPORT ALL SPILLS AND LEAKS OF OIL OR OTHER HAZARDOUS SUBSTANCES. (IE OIL, ANTIFREEZE, CHEMICALS, ETC.) OCCURRING DURING THE PERFORMANCE OF THIS CONTRACT IMMEDIATELY UPON DISCOVERY, REGARDLESS OF THE QUANTITY. CALL THE FIRE DEPARTMENT AND CONTRACTING OFFICER TO REPORT THE SPILL. THE GOVERNMENT RESERVES THE RIGHT TO CLEAN UP, PACKAGE AND DISPOSE OF CONTRACTOR SPILLS OCCURRING ON THE SHIPYARD, AND BILL SUCH COSTS TO THE CONTRACTOR.
6.

UNFORESEEN HAZARDOUS MATERIAL
THE DESIGN HAS IDENTIFIED MATERIALS SUCH AS PCB, LEAD PAINT, AND FRIABLE AND NON-FRIABLE ASBESTOS. IF ADDITIONAL MATERIAL, NOT INDICATED, THAT MAY BE HAZARDOUS TO HUMAN HEALTH UPON DISTURBANCE DURING CONSTRUCTION OPERATIONS IS ENCOUNTERED, STOP THAT PORTION OF WORK AND NOTIFY THE CONTRACTING OFFICER IMMEDIATELY.

UTILITY NOTES:

1.

PREVENT DEBRIS FROM ENTERING INLETS AND BASINS. PROVIDE AND MAINTAIN INLET PROTECTION FOR THE DURATION OF THE WORK. INSPECT INLETS WEEKLY AND AFTER EACH STORM EVENT, AND REMOVE ACCUMULATED DEBRIS. CLEAN ALL STRUCTURES AT THE COMPLETION OF THE WORK.

CONSTRUCTION NOTES:

1.

AVAILABLE STORAGE AND LAYDOWN AREAS ARE EXPLICITLY SHOWN ON THE DRAWINGS. NO OTHER SPACE IS AVAILABLE. COORDINATE FINAL DETAILS WITH THE CONTRACTING OFFICER.
2.

ALL CONSTRUCTION MATERIALS MUST BE TRANSPORTED TO AND FROM THE SITE IN COVERED VEHICLES. PROVIDE VACUUM ASSISTED STREET SWEEPER AT THE SITE AS NECESSARY TO KEEP TRAFFIC AREAS CLEAN.
3.

COORDINATE WITH PORTSMOUTH SHIPYARD OPERATIONS DURING THE PROCESS OF THE WORK.
4.

SUBMIT A DETAILED CONSTRUCTION SEQUENCING PLAN FOR REVIEW AND APPROVAL PRIOR TO CONSTRUCTION.
5.

MAINTAIN SECURITY AT ALL TIMES DURING CONSTRUCTION.
6.

COMPLY WITH ALL APPLICABLE O.S.H.A. REGULATIONS AND SAFETY REQUIREMENTS.
7.

ALL CONSTRUCTION SIGNS MUST BE DESIGNED TO WITHSTAND 50MPH WINDS VELOCITY WINDS AND BE PREPARED BY A PROFESSIONAL SIGN COMPANY WITH A MINIMUM OF THREE (3) YEARS EXPERIENCE.
8.

WHERE CONTRACTOR REMOVES EXISTING SITE FEATURES THAT ARE TO REMAIN TO FACILITATE INSTALLATION OF NEW WORK FOR THIS PROJECT, REPLACE THE EXISTING SITE FEATURES AT CONTRACTORS EXPENSE.
9.

THE CONSTRUCTION LIMIT LINE SHOWN ON DRAWING IS AN APPROXIMATION OF THE CONSTRUCTION LIMITS. THE CONTRACTOR IN COORDINATION WITH THE CONTRACTING OFFICER MAY MODIFY THIS LINE TO ACCOMMODATE THE EFFICIENCY OF CONSTRUCTION PROJECT.

GENERAL REMOVALS NOTES

1.

COORDINATE REMOVAL OF DEBRIS WITH THE CONTRACTING OFFICER TO MINIMIZE DISRUPTION OF SHIPYARD ACTIVITIES. COORDINATE WITH WASTE MANAGEMENT PLAN.
2.

FILL, PATCH, PAINT OR OTHERWISE REFINISH TO MATCH EXISTING REMAINING SURFACES DISTURBED BY REMOVALS OR RELOCATIONS.
3.

ANY MATERIALS THAT ARE SUSPECTED TO CONTAIN HAZARDOUS MATERIALS AND DISCOVERED IMMEDIATELY STOP WORK AND REPORT THE CONDITION TO THE CONTRACTING OFFICER.

GENERAL CONSTRUCTION NOTES

1.

WORK INCLUDED IN THIS CONTRACT SHALL CONFORM TO STATE, FEDERAL, NATIONAL AND OTHER CODES AND ORDINANCES THAT APPLY TO THIS PROJECT.
2.

WORK SHALL BE COMPLETED IN COMPLIANCE WITH INDUSTRY STANDARDS AND PERFORMED IN A WORKMANLIKE PROFESSIONAL MANNER.
3.

MAINTAIN BUILDING EGRESS PATHS DURING THE ENTIRE CONTRACT PERIOD. COORDINATE WITH CONTRACTING OFFICER.
4.

DURING THE ENTIRE CONTRACT PERIOD, MAINTAIN THE CONSTRUCTION SITE IN A SECURE, NEAT, CLEAN AND SAFE MANNER.
5.

ITEMS AND COMPONENTS SHOWN ON THE DRAWINGS SHALL BE PROVIDED BY THE CONTRACTOR UNLESS NOTED AS EXISTING.
6.

WORK FROM GIVEN DIMENSIONS AND LARGE SCALE DETAILS. DO NOT SCALE DRAWINGS.
7.

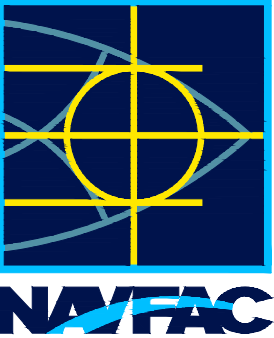

CARE SHALL BE TAKEN TO PROTECT EXISTING SYSTEMS AND SURFACES TO REMAIN. DAMAGE RESULTING FROM THE CONTRACTOR'S OPERATIONS SHALL BE REPAIRED OR REPLACED AS APPROVED BY THE CONTRACTING OFFICER AT NO ADDITIONAL COST TO THE GOVERNMENT.
8.

OBTAIN APPROVAL FROM THE CONTRACTING OFFICER FOR THE SEQUENCE AND TIMING OF OPERATIONS PRIOR TO COMMENCING WORK.

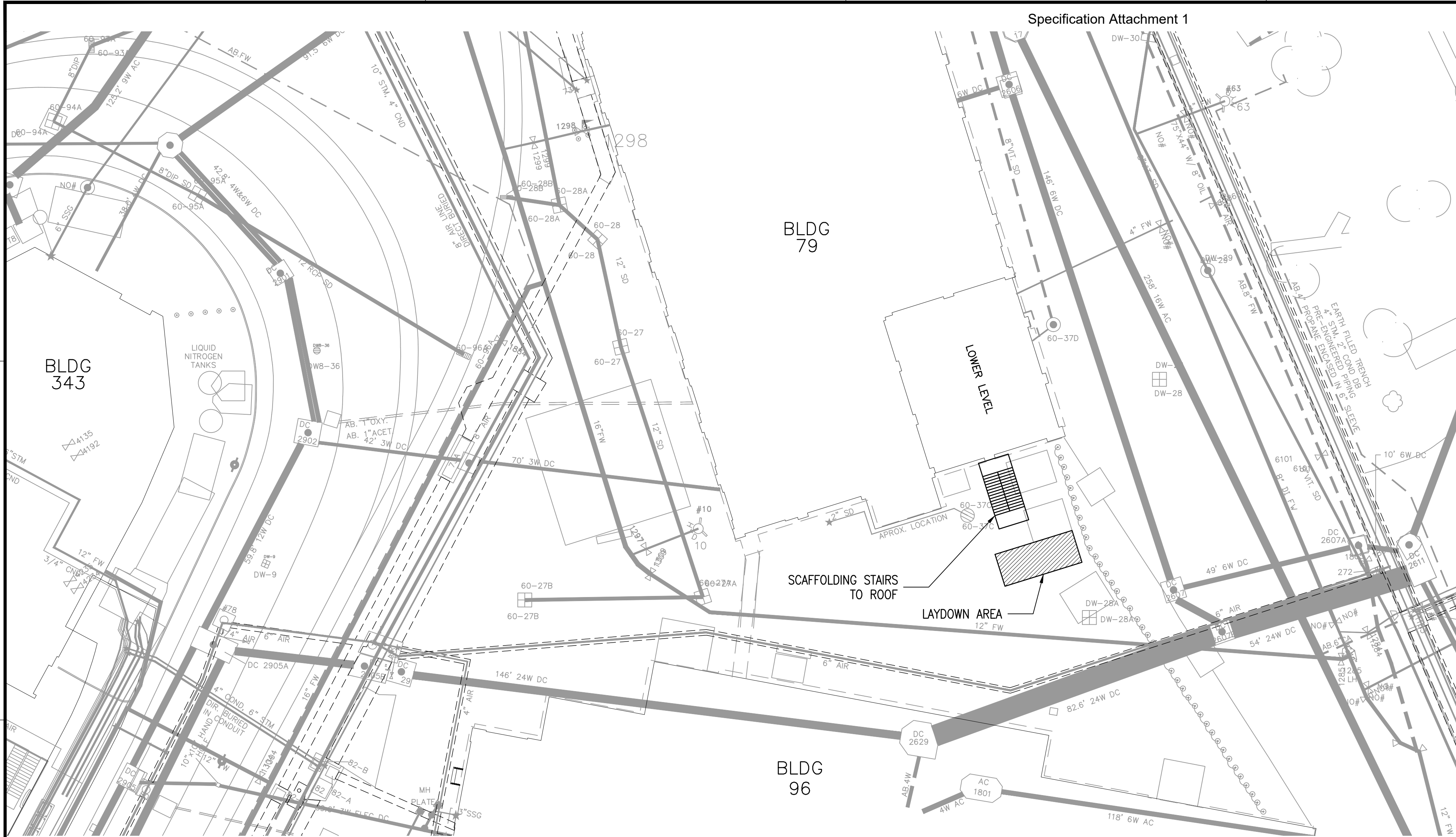
Specification Attachment 1

ABBREVIATIONS

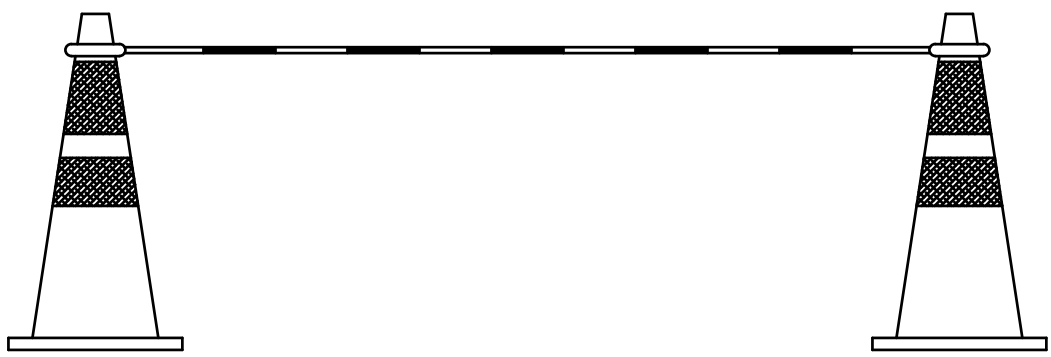
⊙	AT	HGT	HEIGHT	TOS	TOP OF STEEL
&	AND	HM	HOLLOW METAL	TOW	TOP OF WALL
±	PLUS OR MINUS	HORIZ	HORIZONTAL	TS	TRANSITION STRIP
ACM	ASBESTOS CONTAINING MATERIAL	HPCA	HIGH PRESSURE COMPRESSED AIR	TYP	TYPICAL
AFF	ABOVE FINISHED FLOOR	HR	HOOR	UNO	UNLESS NOTED OTHERWISE
ALUM	ALUMINUM	IN	INCHES	VCT	VINYL COMPOSITION TILE
BF	BARRIER FREE	INSUL	INSULATED, INSULATION	VERT	VERTICAL
BLDG	BUILDING	LPCA	LOW PRESSURE COMPRESSED AIR	W/	WITH
BOT	BOTTOM	MAX	MAXIMUM	W	WEST
BS	BOTH SIDES	MDF	MEDIUM DENSITY FIBERBOARD	WD	WOOD
Q	CENTERLINE	MECH	MECHANICAL	WF	WIDE FLANGE
CIA	CONTROLLED INDUSTRIAL AREA	MFR	MANUFACTURER	WR	EXTRUDED POLYSTYRENE
CLG	CEILING	MIN	MINIMUM		
CLR	CLEAR	MIR	MIRROR IMAGE		
CMU	CONCRETE MASONRY UNIT	MO	MASONRY OPENING		
COL	COLUMN	MR	MOISTURE RESISTANT		
CONC	CONCRETE	MTL	METAL		
CONT	CONTINUOUS	N	NORTH		
CUST	CUSTODIAL	NIC	NOT IN CONTRACT		
DF	DRINKING FOUNTAIN	NO, #	NUMBER		
DIA	DIAMETER	NOM	NOMINAL		
DN	DOWN	NUC	NUCLEAR		
DWG	DRAWING	OC	ON CENTER		
E	EAST	PBO	PROVIDED BY OTHERS		
EA	EACH	PCB	POLYCHLORINATED BIPHENYL		
EF	EXHAUST FAN	PERP	PERPENDICULAR		
EJ	EXPANSION JOINT	PLAM	PLASTIC LAMINATE		
ELEC	ELECTRIC	PLYWD	PLYWOOD		
ELEV	ELEVATION	PNT	PAINT		
EQ	EQUAL	PSF	POUNDS PER SQUARE FOOT		
EQUIP	EQUIPMENT	PSI	POUNDS PER SQUARE INCH		
EW	ELECTRIC WATER COOLER	PW	PUBLIC WORKS		
EXIST	EXISTING	PWD	PUBLIC WORKS DEPARTMENT		
EXPR	EXPRESSING	RCB	RUBBER COVE BASE		
FBC	FURNISHED BY CONTRACTOR	RD	ROOF DRAIN		
FBG	FURNISHED BY GOVERNMENT	REINF	REINFORCED		
FE	FIRE EXTINGUISHER	REQD	REQUIRED		
FEC	FIRE EXTINGUISHER CABINET	RO	ROUGH OPENING		
FF	FINISH FLOOR	RM	ROOM		
FL,FLR	FLOOR	RUB	RUBBER		
FNDN	FOUNDATION	S	SOUTH		
FR	FIRE RATED	SIM	SIMILAR		
FRT	FIRE RATED TREATED	SOW	SCOPE OF WORK		
FT	FOOT	SQ	SQUARE		
GA	GAUGE	SSC	SOLID SURFACE COUNTERTOP		
GFGI	GOVERNMENT FURNISHED, GOVERNMENT INSTALLED	STL	STEEL		
		SYS	SYSTEM		
GYP BD	GYPSUM BOARD				

					DD	DM	APPR
					09/27/2022		
					MM/DD/YYYY		
					OPTION 2		
					1	0	
					ISSUED FOR BID		
					SYN	DESCRIPTION	DATE
							
							
APPROVED:							
FOR COMMANDER NAVFAC:							
ACTIVITY:							
SATISFACTORY TO: DATE:							
DESIGNER: DON DRIVER							
DRAWN BY: DAVID HICKMAN							
CHECKED BY: DAVID HOPPER							
DESIGN MANAGER: DON DRIVER							
PROJECT MANAGER: DAVID HOPPER							
READ/PMANE: JEFF HOYT							
FIRE PROTECTION: XXX							
DEPARTMENT OF THE NAVY NAVAL FACILITIES ENGINEERING COMMAND PUBLIC WORKS DEPARTMENT - MAINE PORTSMOUTH NAVAL SHIPYARD - PORTSMOUTH, NH KITTERY, MAINE B79 2ND & 3RD FLOOR RENOVATIONS - OPTION 2 GENERAL NOTES							
PROJECT NO.: 1618057							
NAVFAC DRAWING NO. 1591148							
SHEET ## OF ##							
G002 FAC-YR-NUM							
DRAWFORM REVISION: DECEMBER 2018							

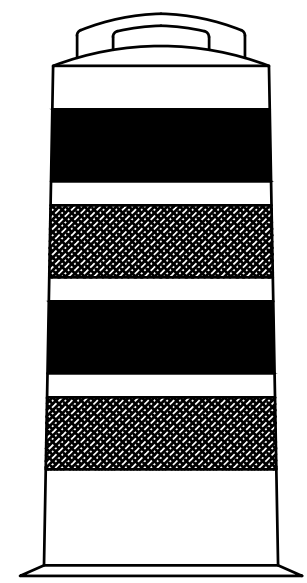
FILE NAME: C:\Users\Louis.dumasso\AppData\Local\Temp\4cPublish_1466A\2019_1618057_Bldg 79 Repair Roof and Repair Brick Wall Over 1st Floor - Mod 2.dwg LAYOUT NAME: C1101 PLOTTED: Thursday, September 29, 2022 - 12:47pm USER: louis.dumasso



LAYDOWN PLAN
SCALE: 1:20



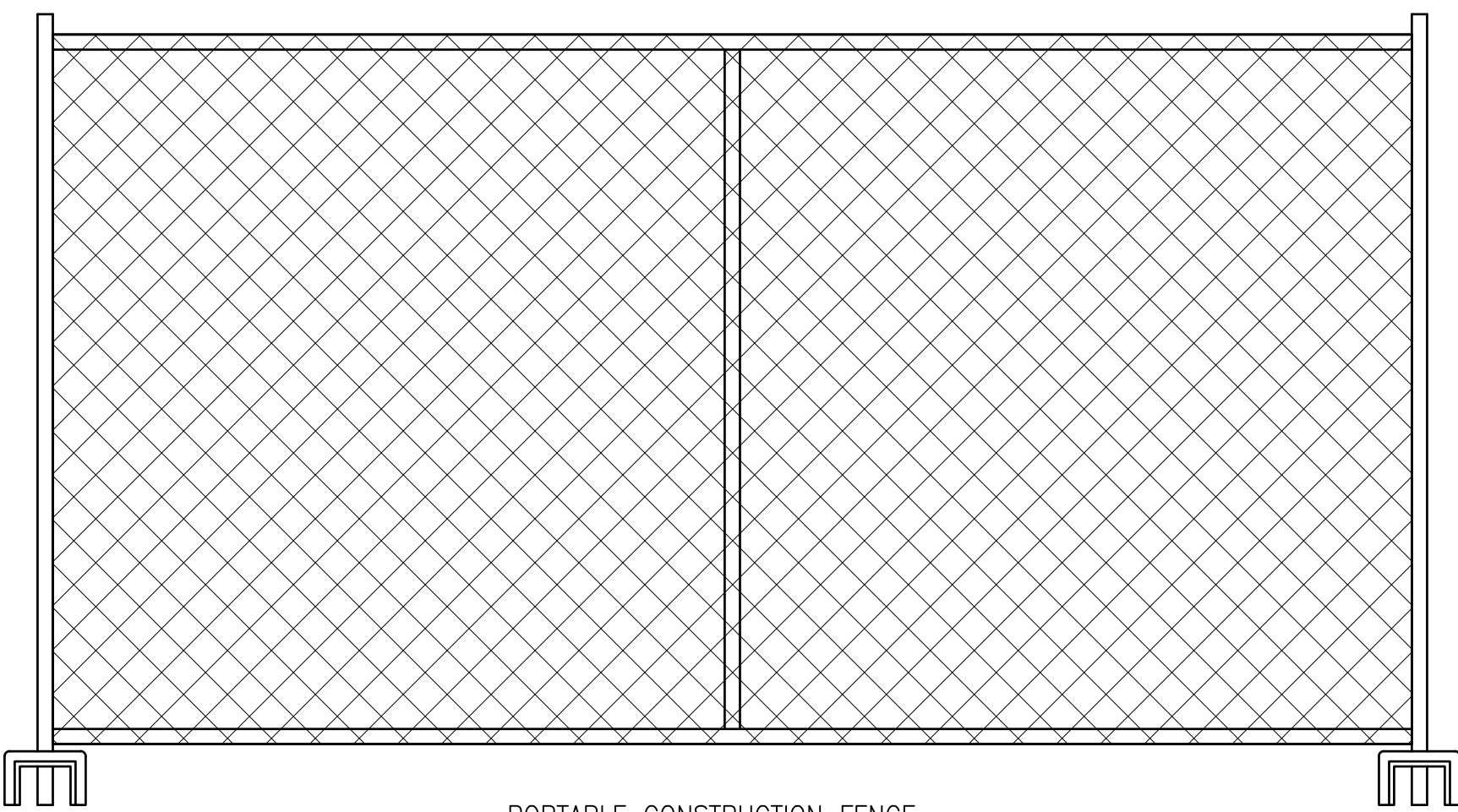
CONES WITH BARRIER POLE



CONSTRUCTION BARREL

TYPE 1 CONSTRUCTION BARRIER

1.



PORTABLE CONSTRUCTION FENCE

**CONSTRUCTION AREA
AUTHORIZED PERSONNEL
ONLY**

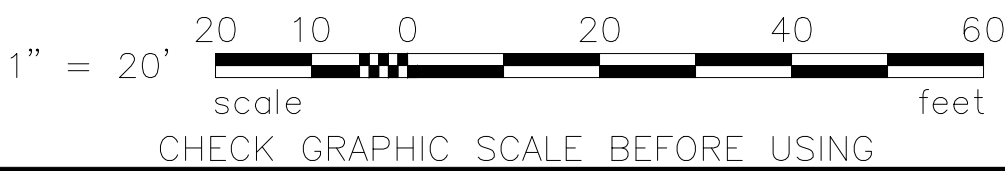
CONTRACTOR NAME

CONSTRUCTION BARRIER SIGN

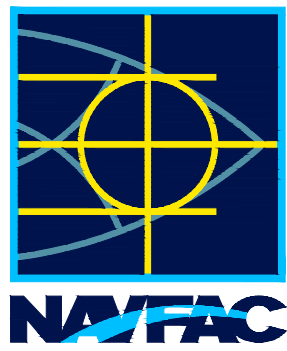
GENERAL CONSTRUCTION NOTES

- ALL BARRIERS AND SIGNAGE SHALL MEET THE REQUIREMENTS OF EM-385-1-1
- PROVIDE MINIMUM TYPE 1 CONSTRUCTION BARRIER AROUND PERIMETER OF CONSTRUCTION AREA.
- CONSTRUCTION BARRIER SIGNS SHALL BE POSTED MINIMUM 150 FEET AROUND PERIMETER OF CONSTRUCTION AREA.
- CONTRACTOR SHALL COORDINATE LAYOUT AND OPENING IN FIELD WITH CM/ET.
- BARRIER LAYOUT SHALL NOT BE CHANGED WITHOUT PRIOR APPROVAL OF CM/ET.
- IF AT ANYTIME IT IS DETERMINED THAT THE RISK TO THE PUBLIC CHANGES BASED ON THE CONTRACTORS WORK, THE CONTRACTOR SHALL TAKE IMMEDIATE ACTION TO ADDRESS ANY RISK TO THE PUBLIC.

GRAPHIC SCALE



SYN	DESCRIPTION	DATE	DM	APP
1	OPTION 2	09/27/2022	DM	
0	ISSUED FOR BID	MM/DD/YYYY	DM	



APPROVED
FOR COMMANDER NAVFAC
ACTIVITY
SATISFACTORY TO DATE
DESIGNER DON DRIVER
DRAWN BY DAVID HICKMAN
CHECKED BY DAVID HOPPER
DESIGN MANAGER DON DRIVER
PROJECT MANAGER DAVID HOPPER
READ/PM/ME JEFF HOYT
FIRE PROTECTION XXX

DEPARTMENT OF THE NAVY	NAVAL FACILITIES ENGINEERING COMMAND
NAVAL FACILITIES ENGINEERING COMMAND ~ MID-ATLANTIC	NAVAL SHIPYARD - PORTSMOUTH, NH
PUBLIC WORKS DEPARTMENT - MAINE	PORTSMOUTH NAVAL SHIPYARD
B79 2ND & 3RD FLOOR RENOVATIONS - OPTION 2	
LAYDOWN PLAN	

PROJECT NO.:	1618057
NAVFAC DRAWING NO.	1591149
SHEET ##	OF ##
G1101	FAC-YR-NUM

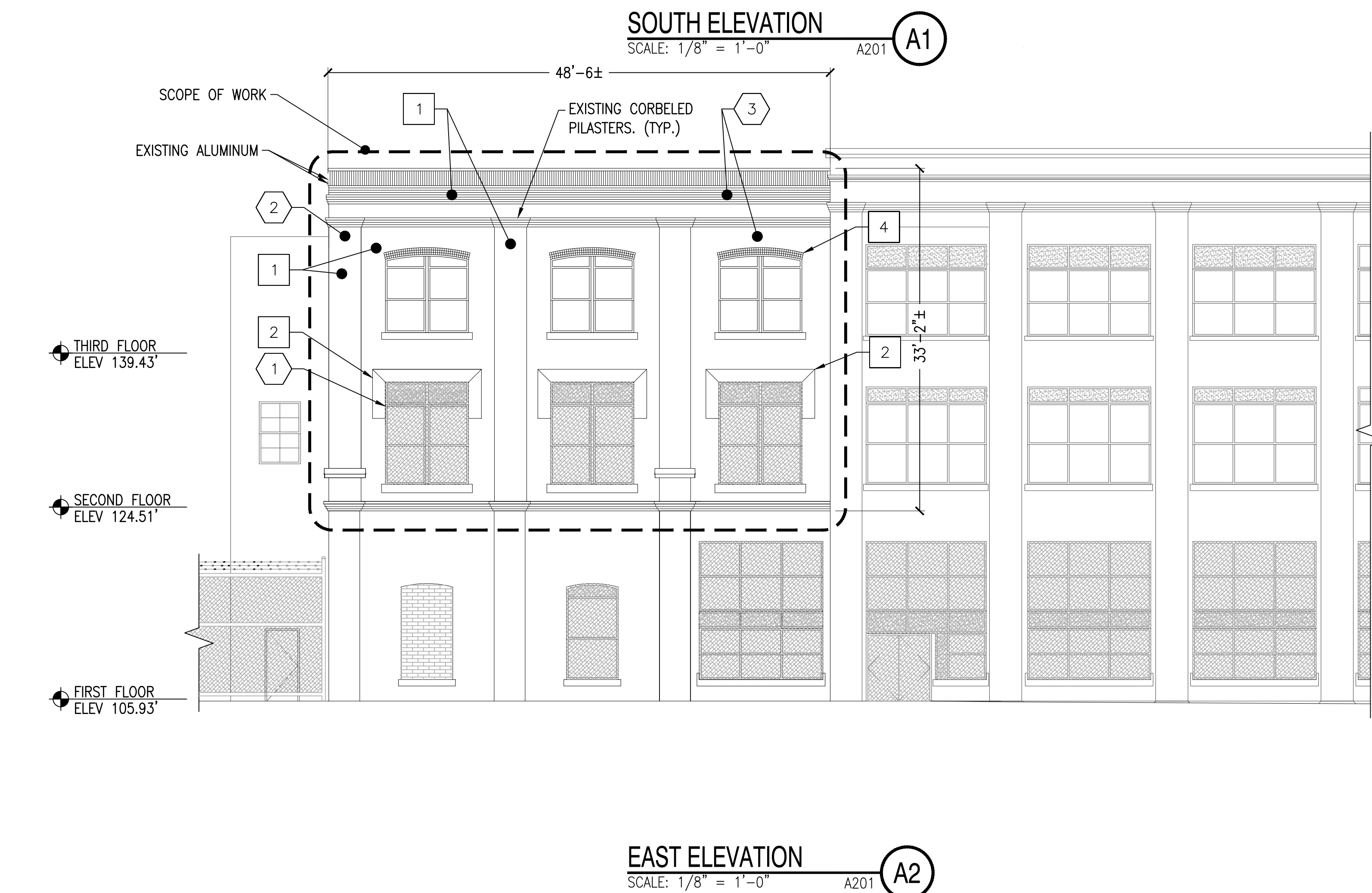
DRAWFORM REVISION: DECEMBER 2018

Specification Attachment 1



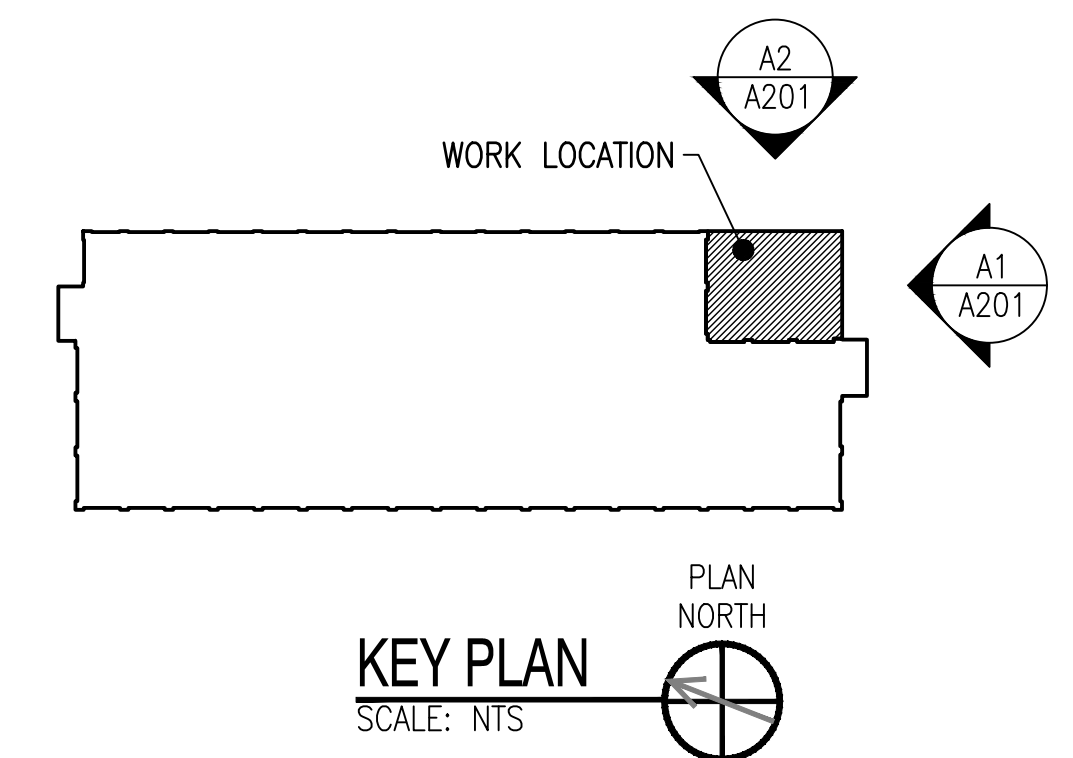
CHECK GRAPHIC SCALE BEFORE USING

DRAWFORM REVISION: DECEMBER 2018




KEY PLAN

1. REPOINT BRICK MASONRY INCLUDING WALLS, PILASTERS, AND CORBELS.
2. REPOINT JOINTS OF BRICK AND STONE MASONRY.
3. REPOINT BRICK SOLDIERS AT WINDOW HEADS.
4. REPOINT ARCHED BRICK ROWLOCKS AT WINDOW HEADS.



1/8" = 1'



8 4 0 8 16 24
scale feet

CHECK GRAPHIC SCALE BEFORE USING

PROJECT NO.: 1618057	
AVFAC DRAWING NO. 1591151	
SHEET ##	OF ##
A201	FAC-YR-NUM

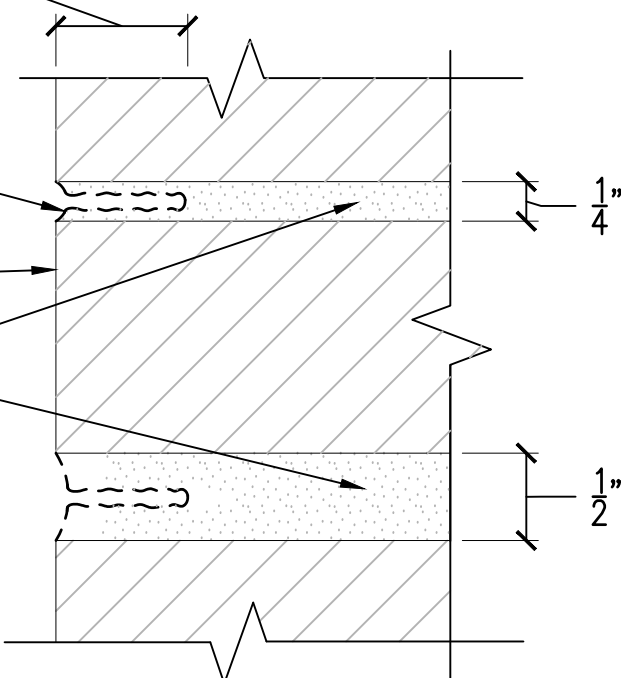
FILE NAME: C:\Users\Louis.dfonasso\AppData\Local\Temp\4cPublish_1466A\2019_1618057_Bldg 79 Repair Roof and Repaint Brick Wall Over 1st Floor - Mod 2.dwg LAYOUT NAME: A501 PLOTTED: Thursday, September 29, 2022 - 12:47pm USER: louis.dfonasso

REMOVE EXISTING MORTAR
UP TO 1" OR 3 x WIDTH,
OR TO ORIGINAL SOUND
MORTAR, WHICH EVER IS
GREATER

GRIND OUT NARROW LINE
ALONG THE CENTER OF JOINT.
EDGES AND SIDES OF BRICK
UNIT SHALL NOT BE DAMAGED
DURING MORTAR GRINDING

EXISTING BRICK FACING
TO REMAIN

EXISTING MORTAR



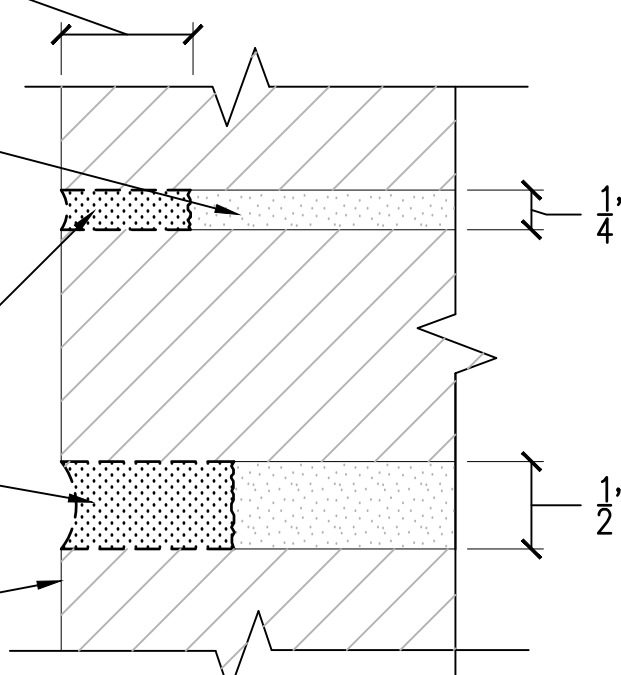
STEP 1

REMOVE EXISTING MORTAR
UP TO 1" OR 3 x WIDTH,
OR TO ORIGINAL SOUND
MORTAR

EXISTING MORTAR

REMOVE MORTAR FROM WIDTH
OF JOINT BY CUTTING, USING
HAND HELD OR LIGHT
PNEUMATIC TOOLS ONLY.
REMOVE ALL MORTAR WITHOUT
DAMAGING OR REMOVING THE
BRICK EDGES OR WIDENING
JOINTS

EXISTING BRICK FACING
TO REMAIN



STEP 2

NOTE: MORTAR REPOINTING METHODS WILL
BE COORDINATED AND APPROVED BY
PWD-ME CULTURAL RESOURCES.

DETERIORATED MORTAR REMOVAL PROCEDURES

SCALE: NTS

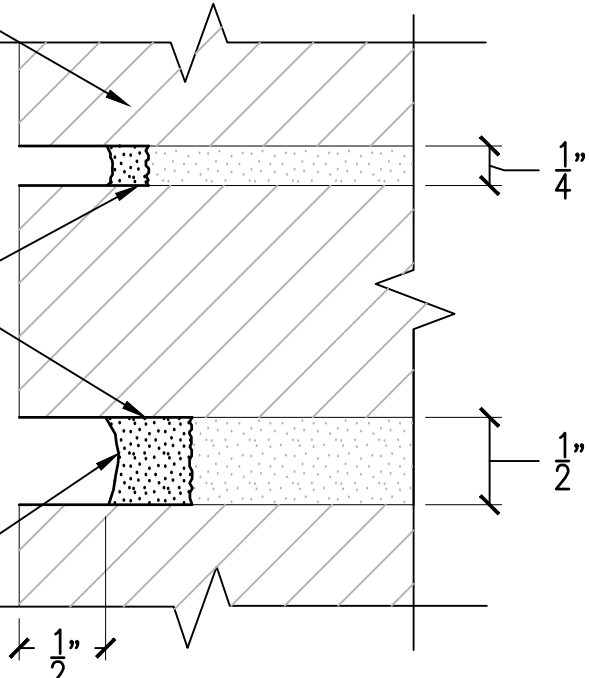
A201

1

EXISTING BRICK FACING
TO REMAIN

MOISTEN ALL JOINTS AND ALLOW
SURFACE TO DRY PRIOR TO THE
APPLICATION OF THE FIRST
LAYER OF MORTAR. MORTAR TO
BE TOOLED WHEN "THUMBPRINT"
HARD

APPLY PRE HYDRATED POINTING
MORTAR IN 1/4" DEEP LAYERS
AFTER PREVIOUS LAYER HAS
BEEN TOOLED. TOOL MORTAR
WHEN IT BECOMES
"THUMBPRINT" HARD

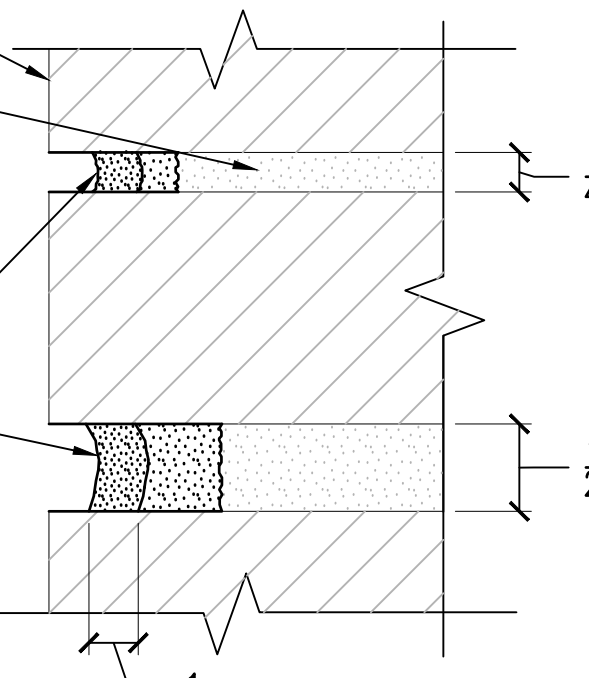


STEP 3

EXISTING BRICK
FACING TO REMAIN

EXISTING MORTAR

APPLY PRE HYDRATED POINTING
MORTAR IN 1/4" DEEP LAYERS
AFTER PREVIOUS LAYER HAS
BEEN TOOLED. TOOL MORTAR
WHEN IT BECOMES
"THUMBPRINT" HARD

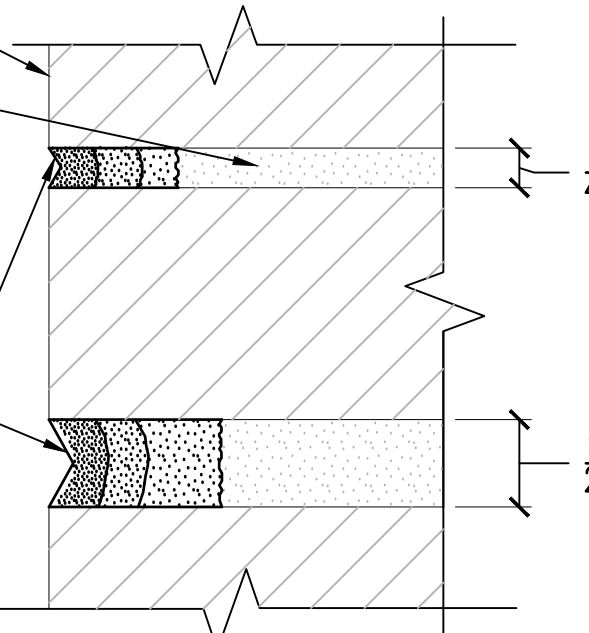


STEP 4

EXISTING BRICK
FACING TO REMAIN

EXISTING MORTAR

INSTALL LAST LAYER AND TOOL
TO A "GRAPEVINE" PROFILE DO
NOT ALLOW MORTAR TO COME
INTO CONTACT WITH OR RESIDUE
TO REMAIN ON ANY EXPOSED
BRICK SURFACES



STEP 5

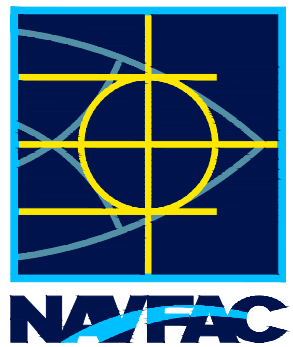
NOTE: REFER TO STEP 1 AND STEP 2, ON
SHEET AD501 FOR MORTAR REMOVAL
PROCEDURES. MORTAR REPOINTING METHODS
WILL BE COORDINATED AND APPROVED BY
PWD-ME CULTURAL RESOURCES.

TYPICAL REPOINTING PROCEDURES

SCALE: NTS

A201

2



APPROVED

FOR COMMANDER NAVFAC

ACTIVITY

SATISFACTORY TO DATE

DESIGNER DON DRIVER

DRAWN BY DAVID HICKMAN

CHECKED BY DAVID HOPPER

DESIGN MANAGER DON DRIVER

PROJECT MANAGER DAVID HOPPER

HEAD/PM/ME JEFF HOYT

FIRE PROTECTION XXX

DEPARTMENT OF THE NAVY
NAVAL FACILITIES ENGINEERING COMMAND
NAVAL FACILITIES ENGINEERING COMMAND ~ MID-ATLANTIC
PUBLIC WORKS DEPARTMENT - MAINE
PORTSMOUTH NAVAL SHIPYARD
PORTSMOUTH, MAINE
KITTEERY, MAINE
B79 2ND & 3RD FLOOR RENOVATIONS
- OPTION 2
DETAILS

PROJECT NO.: 1618057

NAVFAC DRAWING NO.

1591152

SHEET ## OF ##

A501 FAC-YR-NUM

DRAWING REVISION: DECEMBER 2018