



DIRECTORATE OF PUBLIC WORKS
ENGINEERING DIVISION

WHITE SANDS MISSILE RANGE, NEW MEXICO

CONCURRENCES

Note: Signatures affixed on this sheet indicate official recommendation and approval of all the drawings in this set as indexed on this sheet

| |
|------------------------------------|
| Garrison Safety |
| Physical Security |
| Fire Department |
| DPW Environmental |
| Anti-Terrorism Force Protection |
| Information Management |
| Operations & Maintenance |
| Customer 1 |
| Customer 2 |

REPAIR SIGNS/SPEED
CONTROL WSMR MAIN POST

BID SET
100% DESIGN
DATE: DEC 2022

| | | | | |
|--|---------------|--|-------------|----------|
| | | | | |
| | | | | |
| | | | | |
| NO. | DATE | DESCRIPTION | BY | APPROVED |
| REVISIONS | | | | |
| WHITE SANDS MISSILE RANGE, N.M. DIRECTORATE OF PUBLIC WORKS ENGINEERING DIVISION | | | | |
| DRAWN BY REP | DESIGNED BY | REPAIR SIGNS/SPEED CONTROL WSMR MAIN POST | | |
| CHECKED BY | | | | |
| SUBMITTED | | | | |
| PROJECT MANAGER | | | | |
| RECOMMENDED | | | | |
| BRANCH CHIEF | | COVER SHEET | | |
| APPROVED | | | | |
| John Morgan CHIEF, ENGINEERING DIVISION | | | | |
| DATE December, 2022 | SCALE NONE | DRAWING NUMBER WS-85110-2022-C-G-01 | PLATE 01 | |
| | | SHEET 1 OF 10 | | |

General Notes:

1. Contractor shall coordinate all work with existing conditions and construction drawings. Provide all equipment, material and labor as required for complete functional system.
2. All materials and equipment shall be installed in accordance with manufacture's published recommendations, contract documents, industry standards and all federal, state, and local codes and amendments as adopted by the government for service intended by the Contracting Officer (KO). The install of all materials and equipment shall be made by experience and licensed craftsman in a neat workman like manner. All materials, supervision, labor, tool, costs and services necessary to completely install a functional system shall be furnished by the contractor.
3. The term "provide" used in the drawings and scope of work implies the contractor is to furnish, transport, install, connect, warrant, and start-up, inclusively.
4. The drawings are diagrammatic only but shall be followed as closely as actual construction conditions and work of other trades permit.
5. Upon completion of work, contractor shall provide within 10 days, manufacture's operating & maintenance manual for all equipment including replacement parts list.
6. Contractor shall report discrepancies between field conditions and new construction drawings to the KO in writting before the RFI deadline during the solicitation phase.
7. Should there be any concern by the contractor, the contractor is to submit a Request For Information (RFI) through the proper procedures to have his/her concerns resolved.
8. Contractor shall field verify all existing utilities prior to any excavation for new sign post/pole foundations per SOW 5.5.
9. Contractor shall remove and dispose of any existing asphalt pavement or rigid concrete. Contractor shall dispose rigid concrete at the WSMR Hughes Reclamation Area (Main Cantonment) located at the intersection of Watertown and Hughes Ave. Rigid concrete shall be free of rebar and/or all debris. Contractor shall provide a report to the COR of quantities disposed of.
10. Contractor shall apply water for dust control per section 158 of the Federal Highway Administration (FP-03). Contractor shall utilize water standpipe located at LAT= 32.3692, long = -106.4790 Approximately 1 miles South of project. Alternate water source is a fire hydrant located at 32.3758, -106.4788 approximately $\frac{1}{2}$ mile from project, contractor shall provide a backflow prevention that is approved by the Water Plant Manager, 575-678-1917. Metering of water usage shall be required and reported to the COR on a weekly basis by the amount of truck loads used per day.
11. A borrow pit is available for use. Borrow pit is located North of Nike , LAT: 32.3890, -106.4730. COR shall be notified at least 5 working days prior to removing any material. Quantities of material removed shall be reported to the COR on a weekly basis. When finished using borrow pit, contractor shall remove any grubbed vegetation and leave side slopes at a 4H:1V or flatter slope. Approximate distance from project site is 1 miles.

Solar Powered Hazard Identification Beacons:

1. Solar Powered Hazard Identification beacons shall be Installed per 2019 Edition, Standard Specifications for Highway and Bridge Construction section 715 Beacons and Temporary Signal Equipment and Standard NMDOT Drawings 715S-01-1/1 and 715S-03-1/1.

Raised Crossings:

1. Raised Crossings shall be placed per schedule on sheet 9.
2. Raised crossing on Picatinny shall have 2EA steel concrete filled bollards on the North end of crossing. South end of crossing shall have an ADA compliant perpendicular curb ramp per NMDOT standards 608-001-2.

Traffic Sign Notes:

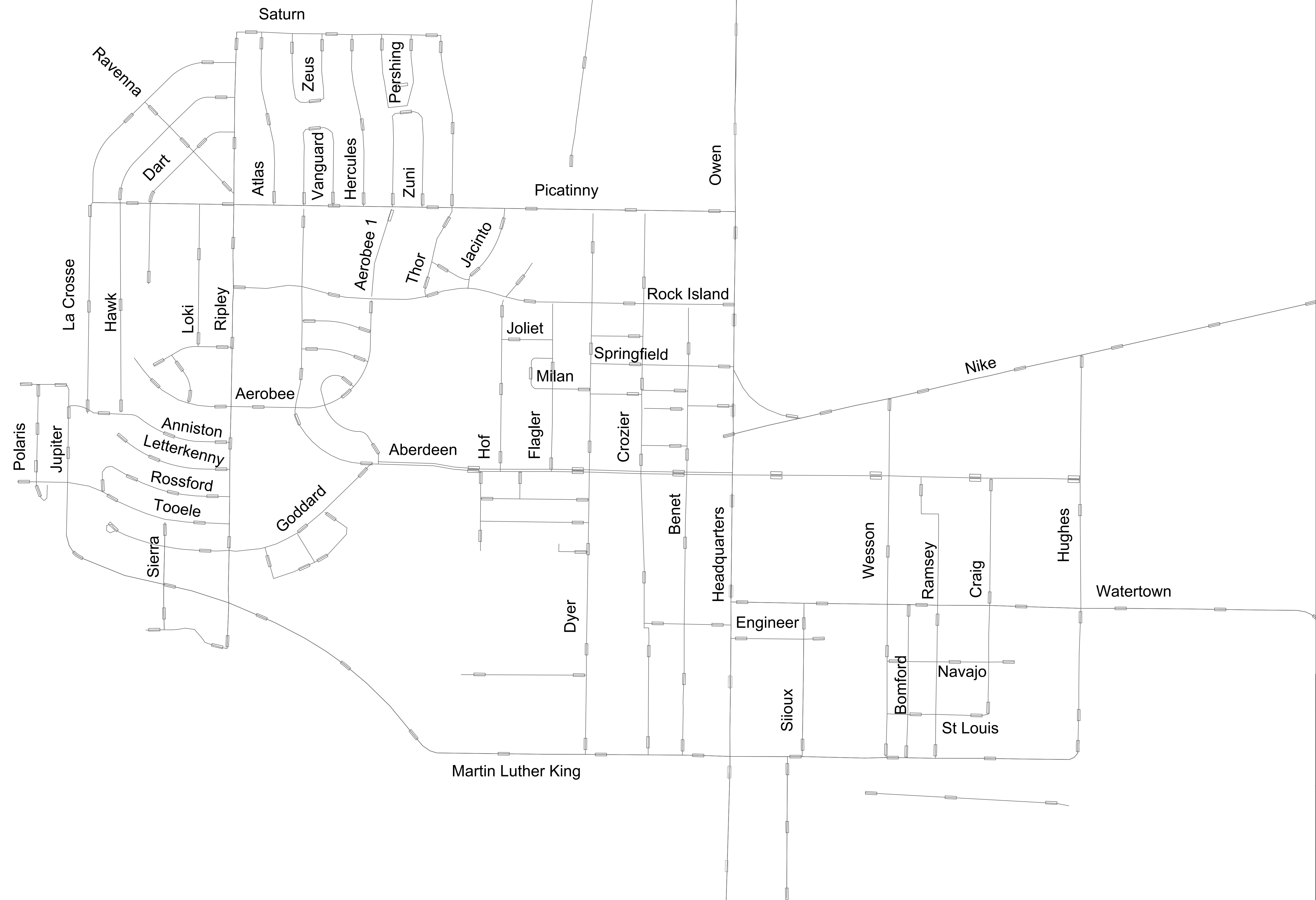
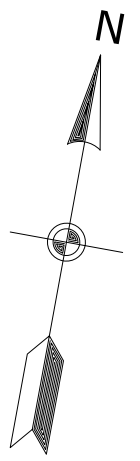
1. All sign materials and installation shall comply with the latest edition of the Manual on Uniform Traffic Control Devices, Section 701 of NMSHTD and Plan Sheet 7.
2. All sign panels shall conform to ASTM B 209. Sign panels shall be constructed of 0.125" Aluminum.
3. All traffic signs shall have 2 - 1.75"x1.75" galvanized square post conforming to ASTM A 1011, grade 55.
4. All sign sheeting shall comply with ASTM D4956 Type XI reflective sheeting.
5. NCHRP 350 compliant breakaways sleeves shall be required on all sign installations with the exception of delineators.
6. All new traffic signs, specifications and placement distances shall be per sign details and sign distance tables of the "standard highway signs" standard manual, 2009 edition.
7. All new signs shall be installed at designated areas and new sign posts shall have a "slipbase system" & shall be installed at a safe clear distance from the existing curb or edge of pavement.
8. All traffic posts and all signs shall be turned over to the WSMR Sign Fabricator Kasey Page 575-678-2907.

Pavement Marking Notes:

1. All pavement markings & striping shall be 4: wide, white or yellow as indicated on the details and plan sheets 8 and shall conform to standard highway colors.
2. All pavement markings shall be installed by using Type "B" Waterborn paint with glass beads per section 634.05 of the FP-03.
3. All specifications for pavement markings are as per Manual of Uniform Traffic Control Devices (MUTCD) and standard manual 2009 Edition.
4. Contractor shall prepare Road surface prior to applying roadway markings per manufacture specifications.
5. Flagler shall be a one way street pavement markings and roadway signs shall be placed accordingly.
6. The pavement markings over the entire main cantonment shall be refreshed with Type B waterborn paint. Every stop sign shall have a 12" stop bar. Roadways with curb will not require edge line pavement markings. Pavement markings shall not cross side streets or driveways. Pavement markings consist of approximately 264,000LF of 4", 3,000LF of 12" (to include new and refreshed crosswalks) and 30EA symbols.

BID SET
100% DESIGN
DATE: DEC 2022

| | | | | |
|--|-------------|--|----|----------|
| | | | | |
| | | | | |
| | | | | |
| | | | | |
| NO. | DATE | DESCRIPTION | BY | APPROVED |
| REVISIONS | | | | |
| WHITE SANDS MISSILE RANGE, N.M. DIRECTORATE OF PUBLIC WORKS ENGINEERING DIVISION | | | | |
| DRAWN BY REP | DESIGNED BY | REPAIR SIGNS/SPEED CONTROL WSMR MAIN POST | | |
| CHECKED BY | | | | |
| SUBMITTED | | | | |
| PROJECT MANAGER | | | | |
| RECOMMENDED | | GENERAL NOTES | | |
| BRANCH CHIEF | | | | |
| APPROVED | | DRAWING NUMBER | | PLATE |
| John Morgan | | WS-85110-2022-C-GI-02 | | 02 |
| CHIEF, ENGINEERING DIVISION | | | | |
| DATE | SCALE | | | |
| December, 2022 | NONE | | | |
| | | SHEET | 2 | OF 10 |



BID SET
100% DESIGN
DATE: DEC 2022

| | | | | |
|--|---|--|----------|----------|
| | | | | |
| | | | | |
| | | | | |
| NO. | DATE | DESCRIPTION | BY | APPROVED |
| REVISIONS | | | | |
| WHITE SANDS MISSILE RANGE, N.M. DIRECTORATE OF PUBLIC WORKS ENGINEERING DIVISION | | | | |
| DRAWN BY REP | DESIGNED BY | REPAIR SIGNS/SPEED CONTROL WSMR MAIN POST | | |
| CHECKED BY | | | | |
| SUBMITTED | | | | |
| PROJECT MANAGER RECOMMENDED | | | | |
| BRANCH CHIEF | | SITE PLAN | | |
| APPROVED John Morgan CHIEF, ENGINEERING DIVISION | DRAWING NUMBER WS-85110-2022-C-SP-03 | PLATE 03 | | |
| DATE December, 2022 | SCALE NONE | SHEET 3 | OF 10 | |

| MAIN POST SIGNAGE | | | | | | |
|-------------------|-----------|---------|------------|-------|-------|-----|
| Roadway | Direction | LAT | LONG | R2-1 | Size | SF |
| Headquarters | SB | 32.3713 | -106.4795 | 35MPH | 30X36 | 7.5 |
| Headquarters | SB | 32.3713 | -106.4795 | 35MPH | 30X36 | 7.5 |
| Headquarters | SB | 32.3623 | -106.4774 | 35MPH | 30X36 | 7.5 |
| Headquarters | NB | 32.3490 | -106.4477 | 35MPH | 30X36 | 7.5 |
| Headquarters | NB | 32.3537 | -106.4612 | 35MPH | 30X36 | 7.5 |
| Headquarters | NB | 32.3621 | -106.4773 | 35MPH | 30X36 | 7.5 |
| MLK | EB | 32.3730 | -106.4787 | 25MPH | 24X30 | 5 |
| MLK | EB | 32.3730 | -106.4749 | 25MPH | 24X30 | 5 |
| MLK | EB | 32.3767 | -106.4945 | 15MPH | 24X30 | 5 |
| MLK | EB | 32.3764 | -106.4933 | 15MPH | 24X30 | 5 |
| MLK | WB | 32.3731 | -106.4703 | 25MPH | 24X30 | 5 |
| MLK | WB | 32.3731 | -106.4758 | 25MPH | 24X30 | 5 |
| MLK | WB | 32.3731 | -106.4801 | 25MPH | 24X30 | 5 |
| MLK | WB | 32.3730 | -106.4842 | 25MPH | 24X30 | 5 |
| MLK | WB | 32.3768 | -106.4943 | 15MPH | 24X30 | 5 |
| ABERDEEN | WB | 32.3801 | -106.4703 | 25MPH | 30X36 | 7.5 |
| ABERDEEN | WB | 32.3800 | -106.4802 | 25MPH | 30X36 | 7.5 |
| ABERDEEN | WB | 32.3800 | -106.4844 | 25MPH | 30X36 | 7.5 |
| ABERDEEN | WB | 32.3801 | -106.4882 | 15MPH | 24X30 | 5 |
| ABERDEEN | WB | 32.3801 | -106.4901 | 15MPH | 24X30 | 5 |
| ABERDEEN | EB | 32.3799 | -106.4893 | 15MPH | 24X30 | 5 |
| ABERDEEN | EB | 32.3800 | -106.4844 | 25MPH | 24X30 | 5 |
| Picatinny | WB | 32.3862 | -106.4882 | 15MPH | 24X30 | 5 |
| Picatinny | WB | 32.3861 | -106.4976 | 15MPH | 24X30 | 5 |
| Picatinny | EB | 32.3861 | -106.4907 | 15MPH | 24X30 | 5 |
| Picatinny | EB | 32.3861 | -106.4976 | 15MPH | 24X30 | 5 |
| ROCK ISLAND | WB | 32.3840 | -106.4888 | 15MPH | 24X30 | 5 |
| ROCK ISLAND | WB | 32.3841 | -106.4862 | 25MPH | 24X30 | 5 |
| ROCK ISLAND | WB | 32.3839 | -106.4837 | 25MPH | 24X30 | 5 |
| ROCK ISLAND | WB | 32.3839 | -106.4820 | 25MPH | 24X30 | 5 |
| ROCK ISLAND | WB | 32.3840 | -106.4799 | 25MPH | 24X30 | 5 |
| ROCK ISLAND | EB | 32.3839 | -106.4889 | 15MPH | 24X30 | 5 |
| ROCK ISLAND | EB | 32.3841 | -106.4862 | 25MPH | 24X30 | 5 |
| ROCK ISLAND | EB | 32.3839 | -106.4837 | 25MPH | 24X30 | 5 |
| ROCK ISLAND | EB | 32.3840 | -106.4799 | 25MPH | 24X30 | 5 |
| ROCK ISLAND | EB | 32.3841 | -1106.4975 | 15MPH | 24X30 | 5 |

| MAIN POST SIGNAGE | | | | | | |
|-------------------|-----------|---------|-----------|-------|-------|----|
| Roadway | Direction | LAT | LONG | R2-1 | Size | SF |
| Ripley | NB | 32.3768 | -106.4938 | 15MPH | 24X30 | 5 |
| Ripley | NB | 32.3796 | -106.4938 | 15MPH | 24X30 | 5 |
| Ripley | NB | 32.3818 | -106.4938 | 15MPH | 24X30 | 5 |
| Ripley | NB | 32.3866 | -106.4938 | 15MPH | 24X30 | 5 |
| Ripley | NB | 32.3891 | -106.4937 | 15MPH | 24X30 | 5 |
| Ripley | SB | 32.3891 | -106.4937 | 15MPH | 24X30 | 5 |
| Ripley | SB | 32.3852 | -106.4939 | 15MPH | 24X30 | 5 |
| Ripley | SB | 32.3836 | -106.4939 | 15MPH | 24X30 | 5 |
| Ripley | SB | 32.3823 | -106.4939 | 15MPH | 24X30 | 5 |
| Ripley | SB | 32.3814 | -106.4939 | 15MPH | 24X30 | 5 |
| Dyer | NB | 32.3737 | -106.4835 | 25MPH | 24X30 | 5 |
| Dyer | NB | 32.3796 | -106.4836 | 25MPH | 24X30 | 5 |
| Dyer | NB | 32.3808 | -106.4835 | 25MPH | 24X30 | 5 |
| Dyer | NB | 32.3824 | -106.4835 | 25MPH | 24X30 | 5 |
| Dyer | NB | 32.3842 | -106.4835 | 25MPH | 24X30 | 5 |
| Dyer | NB | 32.3860 | -106.4835 | 25MPH | 24X30 | 5 |
| Dyer | SB | 32.3737 | -106.4835 | 25MPH | 24X30 | 5 |
| Dyer | SB | 32.3769 | -106.4836 | 25MPH | 24X30 | 5 |
| Dyer | SB | 32.3796 | -106.4836 | 25MPH | 24X30 | 5 |
| Dyer | SB | 32.3824 | -106.4835 | 25MPH | 24X30 | 5 |
| Dyer | SB | 32.3842 | -106.4835 | 25MPH | 24X30 | 5 |
| Dyer | SB | 32.3860 | -106.4835 | 25MPH | 24X30 | 5 |
| Crozier | NB | 32.3821 | -106.4820 | 25MPH | 24X30 | 5 |
| Crozier | NB | 32.3852 | -106.4820 | 25MPH | 24X30 | 5 |
| Crozier | NB | 32.3838 | -106.4821 | 25MPH | 24X30 | 5 |
| Crozier | SB | 32.3821 | -106.4820 | 25MPH | 24X30 | 5 |
| Crozier | SB | 32.3852 | -106.4820 | 25MPH | 24X30 | 5 |
| Joliet | WB | 32.3832 | -106.4822 | 25MPH | 24X30 | 5 |
| Joliet | EB | 32.3830 | -106.4835 | 25MPH | 24X30 | 5 |
| Springfield | EB | 32.3824 | -106.4834 | 25MPH | 24X30 | 5 |
| Springfield | WB | 32.3825 | -106.4822 | 25MPH | 24X30 | 5 |
| Milan | WB | 32.3819 | -106.4848 | 25MPH | 24X30 | 5 |
| Milan | EB | 32.3818 | -106.4840 | 25MPH | 24X30 | 5 |
| Flagler | NB | 32.3814 | -106.4846 | 25MPH | 24X30 | 5 |
| Flagler | SB | 32.3810 | -106.4847 | 25MPH | 24X30 | 5 |
| Jacinto | NB | 32.3852 | -106.4863 | 25MPH | 24X30 | 5 |
| Jacinto | SB | 32.3852 | -106.4865 | 25MPH | 24X30 | 5 |

BID SET
100% DESIGN
DATE: DEC 2022

| | | | | |
|--|---------------|---|----|----------|
| | | | | |
| | | | | |
| | | | | |
| | | | | |
| NO. | DATE | DESCRIPTION | BY | APPROVED |
| REVISIONS | | | | |
| WHITE SANDS MISSILE RANGE, N.M. DIRECTORATE OF PUBLIC WORKS ENGINEERING DIVISION | | | | |
| DRAWN BY REP | DESIGNED BY | REPAIR SIGNS/SPEED CONTROL WSMR MAIN POST SIGN SCHEDULE | | |
| CHECKED BY - | | | | |
| SUBMITTED - | | | | |
| PROJECT MANAGER RECOMMENDED | | | | |
| BRANCH CHIEF | | | | |
| APPROVED John Morgan | | DRAWING NUMBER | | PLATE |
| CHIEF, ENGINEERING DIVISION | | WS-85110-2022-C-GC-04 | | 04 |
| DATE December, 2022 | SCALE NONE | SHEET 4 OF 10 | | |

| MAIN POST SIGNAGE | | | | | | |
|-------------------|-----------|---------|-----------|-------|-------|----|
| Roadway | Direction | LAT | LONG | R2-1 | Size | SF |
| Thor | NB | 32.3854 | -106.4879 | 25MPH | 24X30 | 5 |
| Thor | SB | 32.3853 | -106.4881 | 25MPH | 24X30 | 5 |
| Aerobee | NB | 32.3850 | -106.4896 | 15MPH | 24X30 | 5 |
| Aerobee | SB | 32.3851 | -106.4897 | 15MPH | 24X30 | 5 |
| Goddard | NB | 32.3795 | -106.4903 | 15MPH | 24X30 | 5 |
| Goddard | SB | 32.3777 | -106.4936 | 15MPH | 24X30 | 5 |
| Goddard | EB | 32.3779 | -106.4956 | 15MPH | 24X30 | 5 |
| Goddard | WB | 32.3782 | -106.4970 | 15MPH | 24X30 | 5 |
| Sioux | NB | 32.3731 | -106.4773 | 25MPH | 24X30 | 5 |
| Sioux | SB | 32.3766 | -106.4774 | 25MPH | 24X30 | 5 |
| Engineer | EB | 32.3759 | -106.4792 | 25MPH | 24X30 | 5 |
| Engineer | WB | 32.3759 | -106.4774 | 25MPH | 24X30 | 5 |
| Wesson | NB | 32.3744 | -106.4749 | 25MPH | 24X30 | 5 |
| Wesson | SB | 32.3744 | -106.4749 | 25MPH | 24X30 | 5 |
| Wesson | NB | 32.3785 | -106.4749 | 25MPH | 24X30 | 5 |
| Wesson | SB | 32.3785 | -106.4749 | 25MPH | 24X30 | 5 |
| Wesson | SB | 32.3794 | -106.4751 | 25MPH | 24X30 | 5 |
| Saint Louis | EB | 32.3740 | -106.4748 | 25MPH | 24X30 | 5 |
| Saint Louis | WB | 32.3740 | -106.4748 | 25MPH | 24X30 | 5 |
| Navajo | EB | 32.3754 | -106.4729 | 25MPH | 24X30 | 5 |
| Navajo | WB | 32.3754 | -106.4729 | 25MPH | 24X30 | 5 |
| Watertown | WB | 32.3758 | -106.4694 | 25MPH | 24X30 | 5 |
| Watertown | EB | 32.3767 | -106.4690 | 25MPH | 24X30 | 5 |
| Hughes | WB | 32.3806 | -106.4695 | 25MPH | 24X30 | 5 |
| Hughes | EB | 32.3765 | -106.4695 | 25MPH | 24X30 | 5 |
| Hughes | WB | 32.3765 | -106.4695 | 25MPH | 24X30 | 5 |
| Hughes | EB | 32.3806 | -106.4695 | 25MPH | 24X30 | 5 |
| Tooele | WB | 32.3784 | -106.4940 | 15MPH | 24X30 | 5 |
| Tooele | EB | 32.3784 | -106.4954 | 15MPH | 24X30 | 5 |
| Tooele | WB | 32.3795 | -106.4998 | 15MPH | 24X30 | 5 |
| Tooele | EB | 32.3793 | -106.4984 | 15MPH | 24X30 | 5 |
| Rossford | WB | 32.3791 | -106.4940 | 15MPH | 24X30 | 5 |
| Rossford | WB | 32.3793 | -106.4958 | 15MPH | 24X30 | 5 |
| Rossford | EB | 32.3791 | -106.4956 | 15MPH | 24X30 | 5 |
| Rossford | EB | 32.3794 | -106.4974 | 15MPH | 24X30 | 5 |

| MAIN POST SIGNAGE | | | | | | |
|-------------------|-----------|---------|-----------|-------|-------|-------|
| Roadway | Direction | LAT | LONG | R2-1 | Size | SF |
| Letterkenny | EB | 32.3798 | -106.4955 | 15MPH | 24X30 | 5 |
| Letterkenny | WB | 32.3799 | -106.4956 | 15MPH | 24X30 | 5 |
| Letterkenny | EB | 32.3807 | -106.4972 | 15MPH | 24X30 | 5 |
| Anniston | WB | 32.3805 | -106.4941 | 15MPH | 24X30 | 5 |
| Anniston | EB | 32.3804 | -106.4954 | 15MPH | 24X30 | 5 |
| Anniston | WB | 32.3807 | -106.4957 | 15MPH | 24X30 | 5 |
| Anniston | EB | 32.3810 | -106.4967 | 15MPH | 24X30 | 5 |
| Anniston | EB | 32.3811 | -106.4981 | 15MPH | 24X30 | 5 |
| Sierra | NB | 32.3773 | -106.4956 | 15MPH | 24X30 | 5 |
| Sierra | SB | 32.3783 | -106.4957 | 15MPH | 24X30 | 5 |
| Jupiter | WB | 32.3793 | -106.4985 | 15MPH | 24X30 | 5 |
| Jupiter | EB | 32.3793 | -106.4985 | 15MPH | 24X30 | 5 |
| Jupiter | WB | 32.3808 | -106.4984 | 15MPH | 24X30 | 5 |
| Jupiter | EB | 32.3808 | -106.4984 | 15MPH | 24X30 | 5 |
| Polaris | SB | 32.3813 | -106.4994 | 15MPH | 24X30 | 5 |
| Polaris | NB | 32.3796 | -106.4993 | 15MPH | 24X30 | 5 |
| Ravenna | NB | 32.3866 | -106.4940 | 15MPH | 24X30 | 5 |
| Ravenna | SB | 32.3878 | -106.4953 | 15MPH | 24X30 | 5 |
| Ravenna | NB | 32.3878 | -106.4953 | 15MPH | 24X30 | 5 |
| Ravenna | SB | 32.3885 | -106.4964 | 15MPH | 24X30 | 5 |
| Atlas | SB | 32.3902 | -106.4931 | 15MPH | 24X30 | 5 |
| Saturn | WB | 32.3904 | -106.4926 | 15MPH | 24X30 | 5 |
| Zeus | NB | 32.3902 | -106.4922 | 15MPH | 24X30 | 5 |
| Zeus | EB | 32.3887 | -106.4917 | 15MPH | 24X30 | 5 |
| Zeus | WB | 32.3887 | -106.4917 | 15MPH | 24X30 | 5 |
| Zeus | SB | 32.3903 | -106.4914 | 15MPH | 24X30 | 5 |
| Vanguard | EB | 32.3880 | -106.4914 | 15MPH | 24X30 | 5 |
| Vanguard | WB | 32.3880 | -106.4914 | 15MPH | 24X30 | 5 |
| | | | | Total | 137EA | 717.5 |

BID SET
100% DESIGN
DATE: DEC 2022

| | | | | |
|--|----------------|---|------|----------|
| | | | | |
| | | | | |
| | | | | |
| | | | | |
| NO. | DATE | DESCRIPTION | BY | APPROVED |
| REVISIONS | | | | |
| WHITE SANDS MISSILE RANGE, N.M. DIRECTORATE OF PUBLIC WORKS ENGINEERING DIVISION | | | | |
| DRAWN BY REP | DESIGNED BY | REPAIR SIGNS/SPEED CONTROL WSMR MAIN POST SIGN SCHEDULE CONTINUED | | |
| CHECKED BY | | | | |
| SUBMITTED | | | | |
| PROJECT MANAGER RECOMMENDED | | | | |
| BRANCH CHIEF | | | | |
| APPROVED | | DRAWING NUMBER | | PLATE |
| John Morgan CHIEF, ENGINEERING DIVISION | | WS-85110-2022-C-GC-05 | | 05 |
| DATE | December, 2022 | SCALE | NONE | |
| | | SHEET | 5 | OF 10 |

| ADDITIONAL MAIN POST SIGNAGE | | | | | |
|------------------------------|-------------------|---------|-----------|-------|------|
| Roadway | Direction | LAT | LONG | Size | SF |
| Flagler | Do Not Enter R5-1 | 32.38 | -106.4846 | 30X30 | 6.25 |
| Flagler | Do Not Enter R5-1 | 32.3801 | -106.4847 | 30X30 | 6.25 |
| Flagler | One Way R6-1 | 32.3802 | -106.4846 | 36X12 | 3 |
| Flagler | One Way R6-1 | 32.3806 | -106.4847 | 36X12 | 3 |
| Flagler | One Way R6-1 | 32.3811 | -106.4846 | 36X12 | 3 |
| Flagler | One Way R6-1 | 32.3813 | -106.4847 | 36X12 | 3 |
| Flagler | One Way R6-1 | 32.3817 | -106.4847 | 36X12 | 3 |
| Flagler | One Way R6-1 | 32.3814 | -106.4846 | 36X12 | 3 |
| Flagler | Wrong Way R5-1a | 32.3817 | -106.4847 | 36X24 | 6 |
| Flagler | Wrong Way R5-1a | 32.3817 | -106.4846 | 36X24 | 6 |
| Flagler | Begin One Way | 32.3817 | -106.4846 | 24X30 | 5 |
| Ripley | Stop R1-1 | 32.3902 | -106.4937 | 30X30 | 6.25 |
| Saturn | Stop R1-1 | 32.3904 | -106.4936 | 30X30 | 6.25 |
| | | | Total | 13EA | 60 |

| UPGRADED SOLAR POWERED (LED) MAIN POST SIGNAGE | | | | | |
|--|-------------------|---------|-----------|-------|--------|
| Roadway | Direction | LAT | LONG | Size | SF |
| Picatinny | Stop R1-1 | 32.386 | -106.4797 | 30X30 | 6.25 |
| Picatinny | Stop R1-1 | 32.3861 | -106.4796 | 30X30 | 6.25 |
| Rock Island | Stop R1-1 | 32.3839 | -106.4797 | 30X30 | 6.25 |
| Aberdeen | Stop R1-1 | 32.3798 | -106.4797 | 30X30 | 6.25 |
| MLK | Stop R1-1 | 32.3729 | -106.4796 | 30X30 | 6.25 |
| Picatinny | 25MPH R2-1 | 32.3862 | -106.4808 | 24X30 | 5 |
| Rock Island | 25MPH R2-1 | 32.3839 | -106.4837 | 24X30 | 5 |
| Aberdeen | 25MPH R2-1 | 32.3800 | -106.4844 | 24X30 | 5 |
| MLK | 25MPH R2-1 | 32.3730 | -106.4842 | 24X30 | 5 |
| Headquarters SB | 35MPH R2-1 | 32.3828 | -106.4794 | 30X36 | 7.5 |
| Headquarters NB | 35MPH R2-1 | 32.3692 | -106.4794 | 30X36 | 7.5 |
| Headquarters SB | 45MPH R2-1 | 32.3688 | -106.4795 | 30X36 | 7.5 |
| Headquarters SB | 35MPH R2-1 | 32.3757 | -106.4796 | 30X36 | 7.5 |
| Headquarters NB | 45MPH R2-1 | 32.3474 | -106.4425 | 30X36 | 7.5 |
| Headquarters NB | 35MPH R2-1 | 32.3828 | -106.4794 | 30X36 | 7.5 |
| Headquarters | Yield to Ped R1-5 | 32.3854 | -106.4796 | 36X36 | 9 |
| Headquarters | Yield to Ped R1-5 | 32.3854 | -106.4796 | 36X36 | 9 |
| Headquarters | Yield to Ped R1-5 | 32.3761 | -106.4794 | 36X36 | 9 |
| Headquarters | Yield to Ped R1-5 | 32.3761 | -106.4794 | 36X36 | 9 |
| | | | Total | 19EA | 132.25 |



Figure 1. Traffic Signs with LED Lighting

BID SET
100% DESIGN
DATE: DEC 2022

| | | | | |
|--|--|--|-----------------------|----------|
| NO. | DATE | DESCRIPTION | BY | APPROVED |
| REVISIONS | | | | |
| WHITE SANDS MISSILE RANGE, N.M. DIRECTORATE OF PUBLIC WORKS ENGINEERING DIVISION | | | | |
| DRAWN BY REP | DESIGNED BY | REPAIR SIGNS/SPEED CONTROL WSMR MAIN POST ADDITIONAL SIGN SCHEDULE | | |
| CHECKED BY | | | | |
| SUBMITTED | | | | |
| PROJECT MANAGER RECOMMENDED | | | | |
| BRANCH CHIEF APPROVED | John Morgan CHIEF, ENGINEERING DIVISION | | DRAWING NUMBER | PLATE |
| DATE December, 2022 | SCALE NONE | | WS-85110-2022-C-GC-06 | 06 |
| | | | SHEET 6 OF 10 | |

| Flashing Beacon Radar Poles Schedule | | | | |
|--------------------------------------|---------|-----------|-----------|----------|
| Roadway | LAT | LONG | Direction | QTY (EA) |
| Headquarters | 32.3575 | -106.4686 | NB & SB | 2 |
| Headquarters | 32.3652 | -106.4795 | NB & SB | 2 |
| Headquarters | 32.3818 | -106.4795 | NB & SB | 2 |
| Picatinny | 32.3862 | -106.4856 | EB & WB | 2 |
| Rock Island | 32.3840 | -106.4829 | EB & WB | 2 |
| Aberdeen | 32.3800 | -106.4818 | EB & WB | 2 |
| MLK | 32.3731 | -106.4849 | EB & WB | 2 |
| Ripley | 32.3806 | -106.4938 | NB & SB | 2 |



Figure 2. Solar Powered Radar Speed Limit Sign

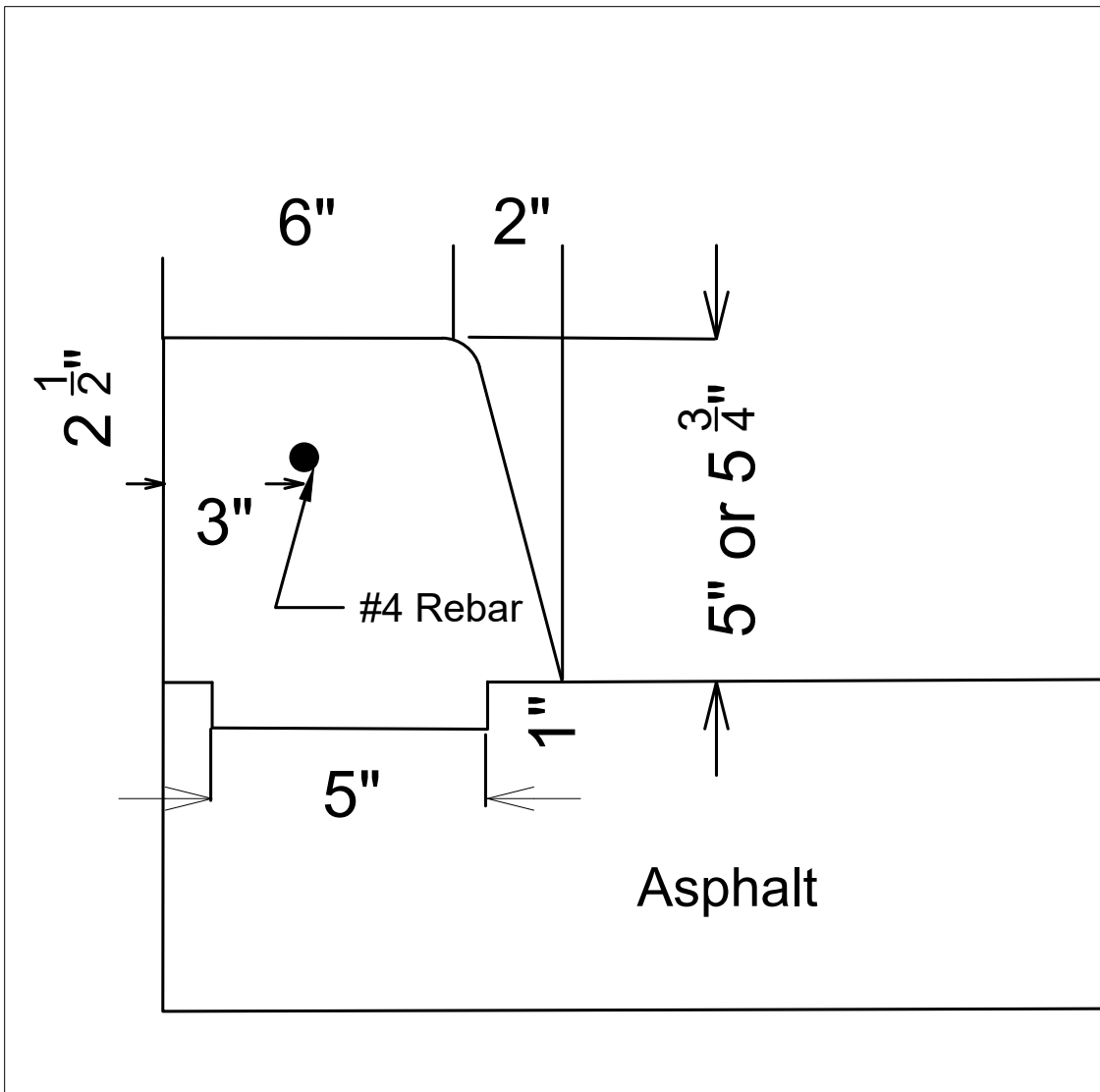


Figure 3. TY IV Curb (Keyed)

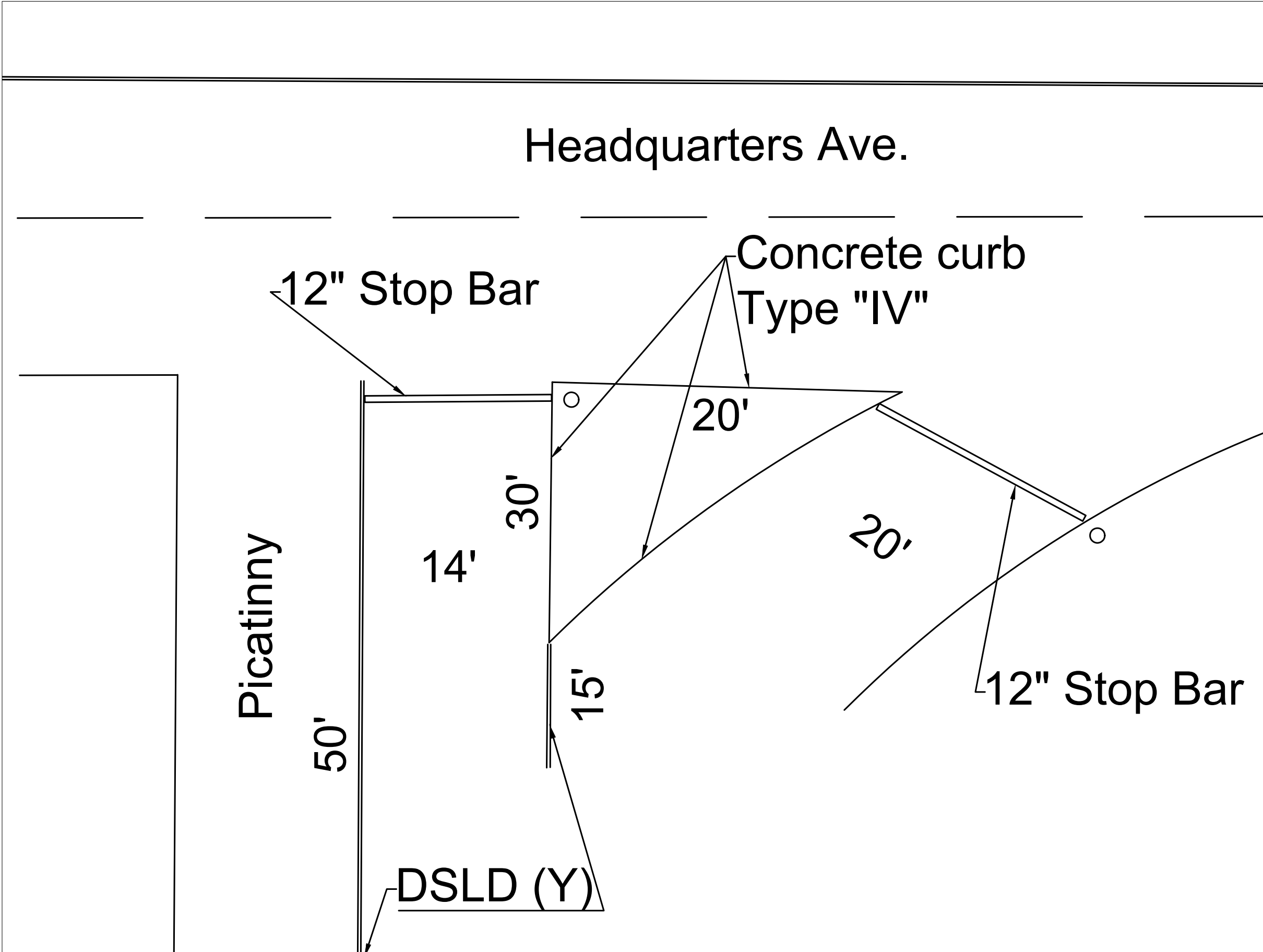


Figure 4. Raised Concrete Median with gravel fill.

1. Saw cut and tie in curb 2' west of Headquarters Ave. edge of pavement.
2. Contractor shall place 90LF of 6" Concrete Curb and Gutter. Backfill and compact with 4" of borrow material and 2" of 1" Toro Red gravel.
3. Place 2EA Solar Powered LED Stop signs with 12" stop bars, see per figure 4.
4. DSLD (Y) Double Solid Yellow Pavement Markings.
5. All concrete shall be 3000PSI and rebar shall be #4.

BID SET
100% DESIGN
DATE: DEC 2022

| | | | | |
|--|--|---|----------------|----------|
| NO. | DATE | DESCRIPTION | BY | APPROVED |
| REVISIONS | | | | |
| WHITE SANDS MISSILE RANGE, N.M. DIRECTORATE OF PUBLIC WORKS ENGINEERING DIVISION | | | | |
| DRAWN BY REP | DESIGNED BY | REPAIR SIGNS/SPEED CONTROL WSMR MAIN POST RADAR SIGN SCHEDULE | | |
| CHECKED BY | | | | |
| SUBMITTED | | | | |
| PROJECT MANAGER RECOMMENDED | | | | |
| BRANCH CHIEF APPROVED | John Morgan CHIEF, ENGINEERING DIVISION | | DRAWING NUMBER | PLATE |
| DATE December, 2022 | SCALE NONE | WS-85110-2022-C-GC-07 | 07 | |
| SHEET 7 OF 10 | | | | |

| Traffic Sign Removal Schedule | | | | |
|-------------------------------|-----------|-------------|---------|-----------|
| Roadway | Direction | Description | LAT | LONG |
| MLK | EB | 30MPH | 32.3767 | -106.4945 |
| MLK | WB | 30MPH | 32.3730 | -106.4842 |
| MLK | WB | 25MPH | 32.3768 | -106.4943 |
| ABERDEEN | EB | 30MPH | 32.3799 | -106.4893 |
| ABERDEEN | EB | 30MPH | 32.3800 | -106.4844 |
| ROCK ISLAND | EB | 25MPH | 32.3839 | -106.4889 |
| Ripley | NB | 25MPH | 32.3768 | -106.4938 |
| Ripley | NB | 25MPH | 32.3866 | -106.4938 |
| Joliet | WB | 10MPH | 32.3832 | -106.4822 |
| Springfield | EB | 15MPH | 32.3824 | -106.4834 |
| Milan | WB | 10MPH | 32.3819 | -106.4848 |
| Goddard | NB | 20MPH | 32.3795 | -106.4903 |
| Goddard | SB | 20MPH | 32.3777 | -106.4936 |
| Saint Louis | EB | 20MPH | 32.3740 | -106.4748 |
| Anniston | WB | 15MPH | 32.3805 | -106.4941 |
| Sierra | NB | 15MPH | 32.3773 | -106.4956 |
| Headquarters | SB | 45MPH | 32.3713 | -106.4795 |
| Headquarters | SB | 45MPH | 32.3713 | -106.4795 |
| Headquarters | SB | 55MPH | 32.3623 | -106.4774 |
| Headquarters | NB | 55MPH | 32.3490 | -106.4477 |
| Headquarters | NB | 55MPH | 32.3537 | -106.4612 |
| Headquarters | NB | 45MPH | 32.3621 | -106.4773 |
| MLK | EB | 35MPH | 32.3730 | -106.4787 |
| MLK | EB | 35MPH | 32.3730 | -106.4749 |
| MLK | EB | 30MPH | 32.3764 | -106.4933 |
| MLK | WB | 35MPH | 32.3731 | -106.4703 |
| MLK | WB | 35MPH | 32.3731 | -106.4758 |
| MLK | WB | 30MPH | 32.3731 | -106.4801 |
| ABERDEEN | WB | 30MPH | 32.3801 | -106.4703 |
| ABERDEEN | WB | 30MPH | 32.3800 | -106.4802 |

| Traffic Sign Removal Schedule | | | | |
|-------------------------------|----|-------|---------|------------|
| ABERDEEN | WB | 30MPH | 32.3800 | -106.4844 |
| ABERDEEN | WB | 25MPH | 32.3801 | -106.4882 |
| ABERDEEN | WB | 25MPH | 32.3801 | -106.4901 |
| Picatinny | WB | 25MPH | 32.3862 | -106.4882 |
| Picatinny | WB | 25MPH | 32.3861 | -106.4976 |
| Picatinny | EB | 25MPH | 32.3861 | -106.4907 |
| Picatinny | EB | 25MPH | 32.3861 | -106.4976 |
| ROCK ISLAND | WB | 25MPH | 32.3840 | -106.4888 |
| ROCK ISLAND | EB | 25MPH | 32.3841 | -1106.4975 |
| Ripley | NB | 25MPH | 32.3796 | -106.4938 |
| Ripley | NB | 25MPH | 32.3818 | -106.4938 |
| Ripley | NB | 25MPH | 32.3891 | -106.4937 |
| Ripley | SB | 25MPH | 32.3891 | -106.4937 |
| Ripley | SB | 25MPH | 32.3852 | -106.4939 |
| Ripley | SB | 25MPH | 32.3836 | -106.4939 |
| Ripley | SB | 25MPH | 32.3823 | -106.4939 |
| Ripley | SB | 25MPH | 32.3814 | -106.4939 |
| Dyer | NB | 30MPH | 32.3737 | -106.4835 |
| Watertown | WB | 30MPH | 32.3758 | -106.4694 |
| Watertown | EB | 30MPH | 32.3767 | -106.4690 |
| Hughes | WB | 30MPH | 32.3806 | -106.4695 |
| Hughes | EB | 30MPH | 32.3765 | -106.4695 |
| Hughes | WB | 30MPH | 32.3765 | -106.4695 |
| Hughes | EB | 30MPH | 32.3806 | -106.4695 |
| Zeus | EB | 10MPH | 32.3887 | -106.4917 |
| Zeus | WB | 10MPH | 32.3887 | -106.4917 |
| Vanguard | EB | 10MPH | 32.3880 | -106.4914 |
| Vanguard | WB | 10MPH | 32.3880 | -106.4914 |

BID SET
100% DESIGN
DATE: DEC 2022

| | | | | |
|--|----------------|--|------|----------|
| | | | | |
| | | | | |
| | | | | |
| | | | | |
| NO. | DATE | DESCRIPTION | BY | APPROVED |
| REVISIONS | | | | |
| WHITE SANDS MISSILE RANGE, N.M. DIRECTORATE OF PUBLIC WORKS ENGINEERING DIVISION | | | | |
| DRAWN BY REP | DESIGNED BY | REPAIR SIGNS/SPEED CONTROL WSMR MAIN POST Removals | | |
| CHECKED BY | | | | |
| SUBMITTED | | | | |
| PROJECT MANAGER | | | | |
| RECOMMENDED | | | | |
| BRANCH CHIEF | | | | |
| APPROVED | | DRAWING NUMBER | | PLATE |
| John Morgan | | WS-85110-2022-C-D-08 | | 08 |
| CHIEF, ENGINEERING DIVISION | | | | |
| DATE | December, 2022 | SCALE | NONE | |
| | | SHEET | 8 | OF 10 |

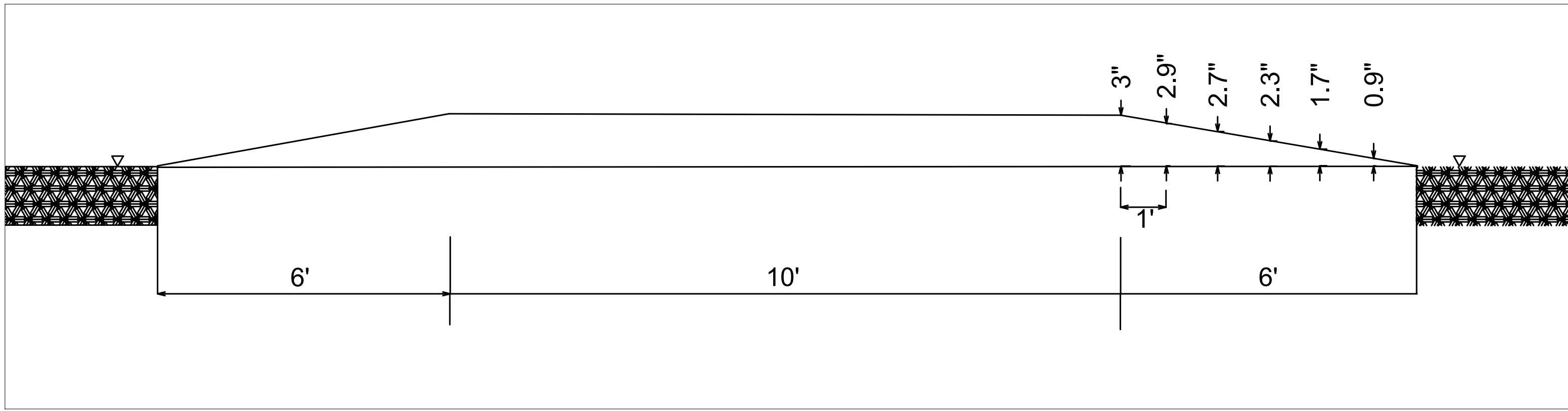


Figure 4. Section A-A



Figure 6. Raised Crossing Example

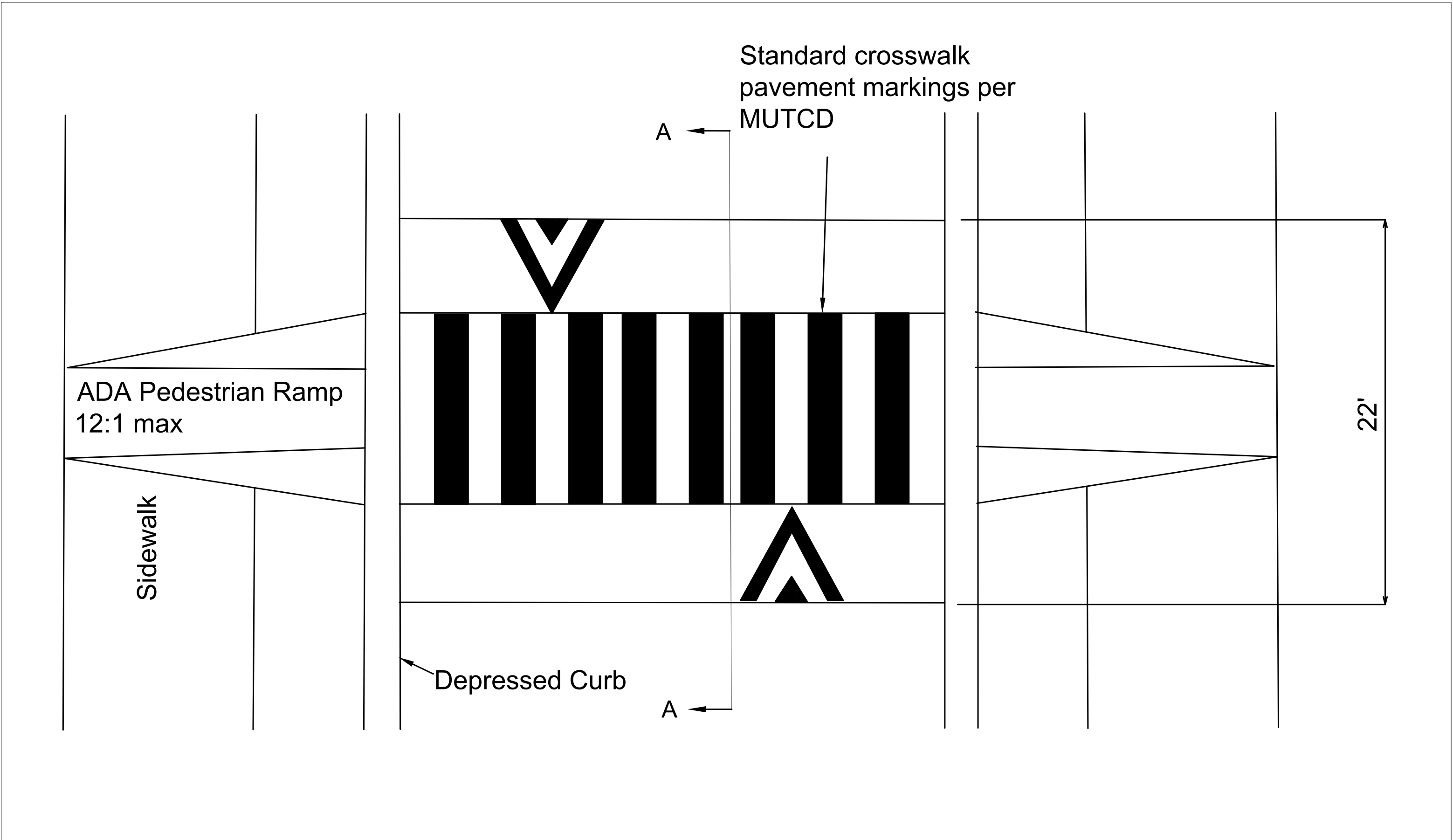


Figure 5. Raised Crossing

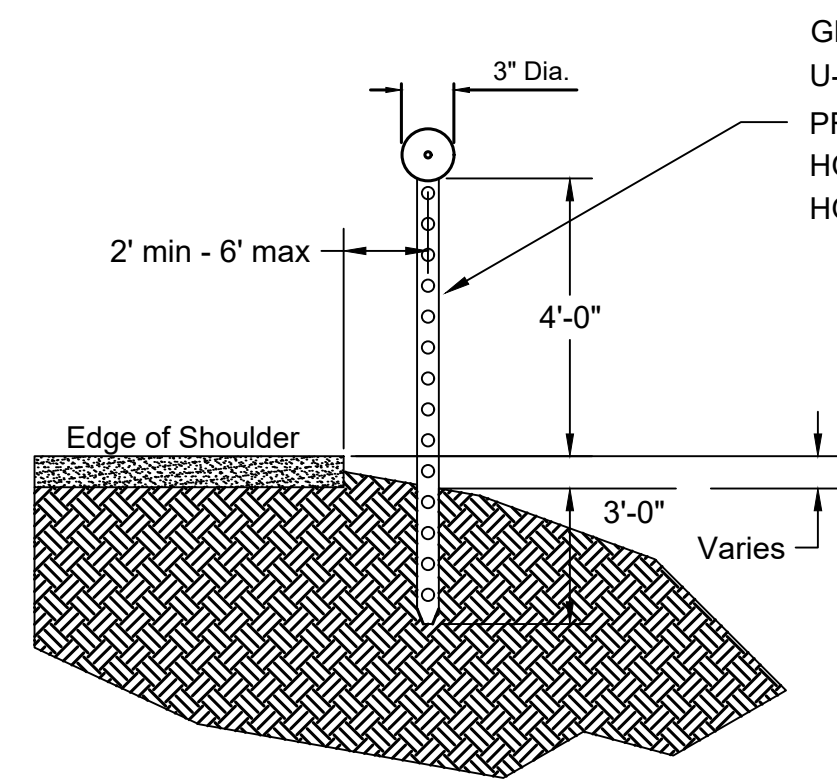
General Notes:

1. Raised crossing at Picatinny shall have an ADA compliant pedestrian ramp on the south end of crossing and 2EA concrete filled steel bollards on the north end of crossing. Bollards shall be installed per manufactures recommendations.

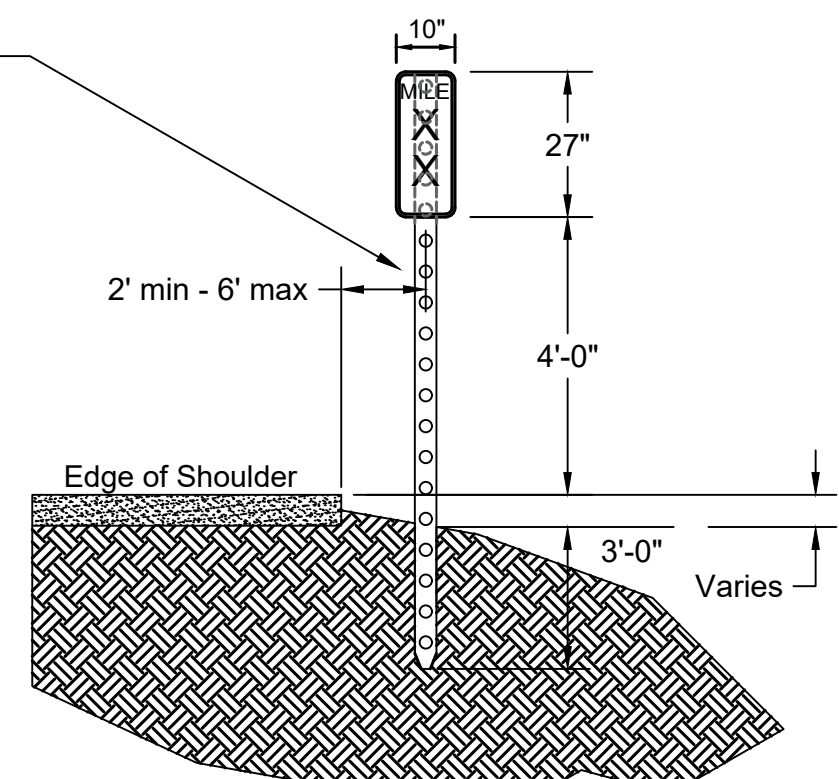
| Raised Crossing Schedule | | | |
|--------------------------|---------|-----------|-----------------------------------|
| Roadway | LAT | LONG | Edge of Curb to edge of Curb (LF) |
| Picatinny | 32.3862 | -106.4826 | 45 |
| Wingate | 32.3850 | -106.4857 | 40 |
| Goddard | 32.3784 | -106.4917 | 24 |

BID SET
100% DESIGN
DATE: DEC 2022

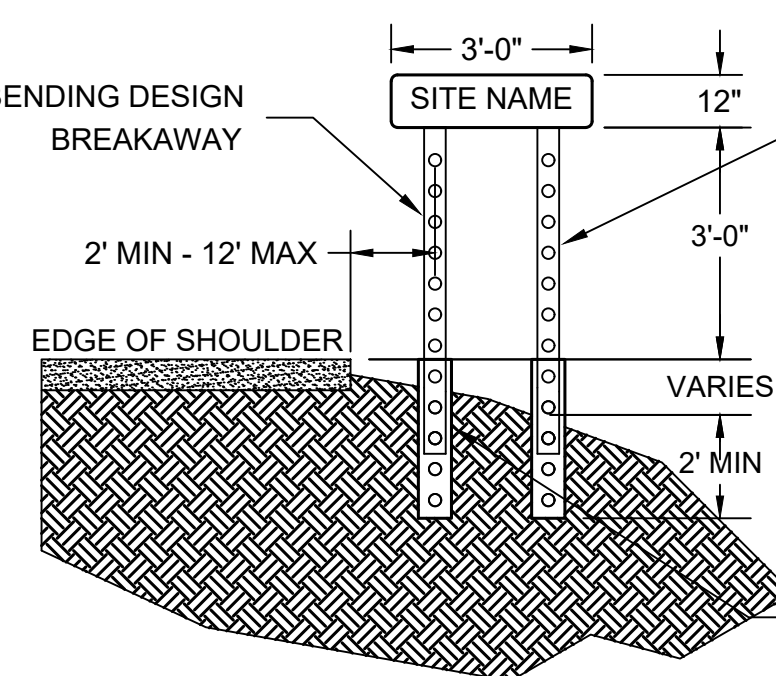
| | | | | |
|--|---------------|--|--------------|----------|
| NO. | DATE | DESCRIPTION | BY | APPROVED |
| REVISIONS | | | | |
| WHITE SANDS MISSILE RANGE, N.M. DIRECTORATE OF PUBLIC WORKS ENGINEERING DIVISION | | | | |
| DRAWN BY REP | DESIGNED BY | REPAIR SIGNS/SPEED CONTROL WSMR MAIN POST RAISED CROSSINGS | | |
| CHECKED BY | | | | |
| SUBMITTED | | | | |
| PROJECT MANAGER | | | | |
| RECOMMENDED | | | | |
| BRANCH CHIEF | | | | |
| APPROVED John Morgan CHIEF, ENGINEERING DIVISION | | DRAWING NUMBER WS-85110-2022-C-C-09 | PLATE 09* | |
| DATE December, 2022 | SCALE NONE | SHEET 9 | OF 10 | |



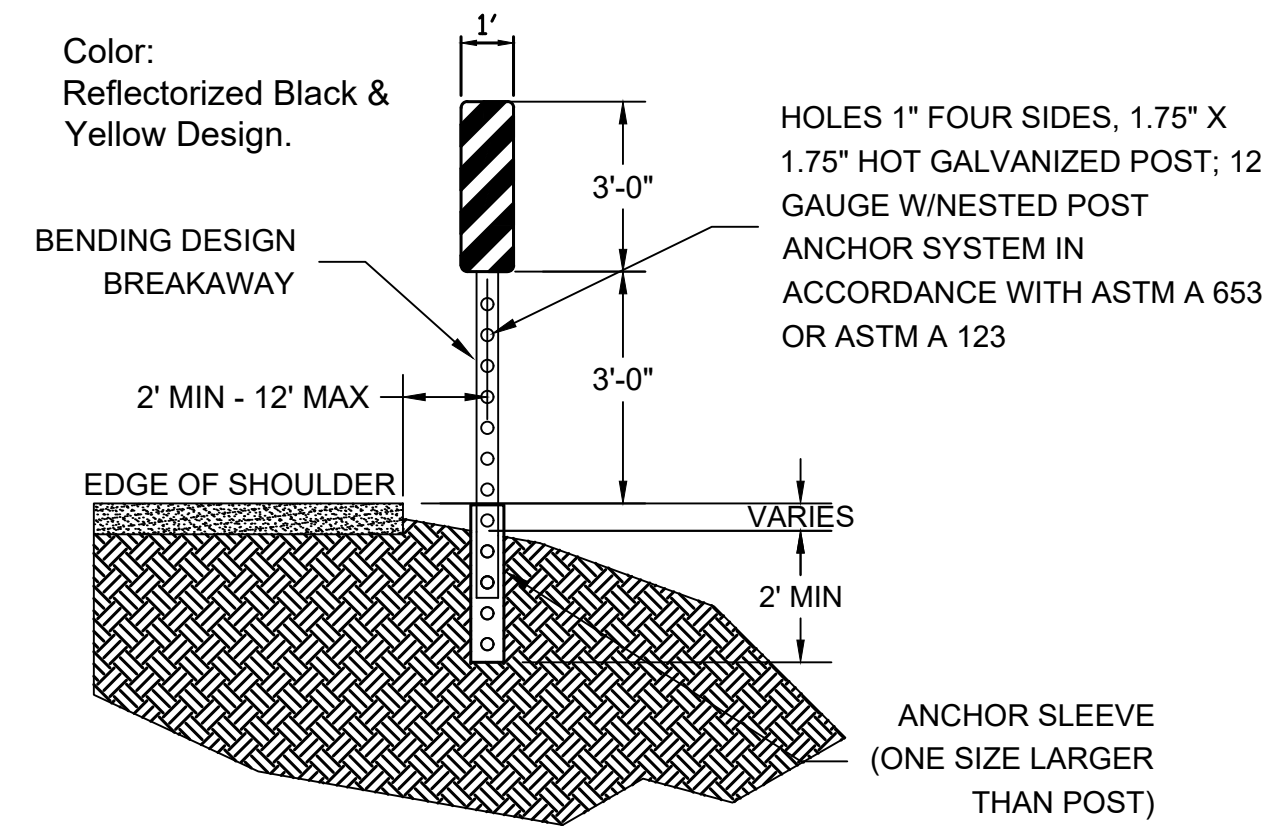
DELINEATOR
NTS



MILE MARKER
NTS



SITE NAME PLAQUE
NTS

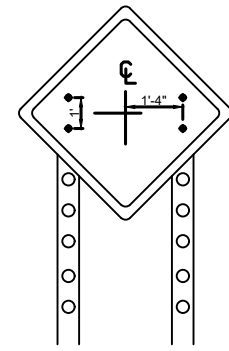


OBJECT MARKER SIGN
TYPE 3
NTS

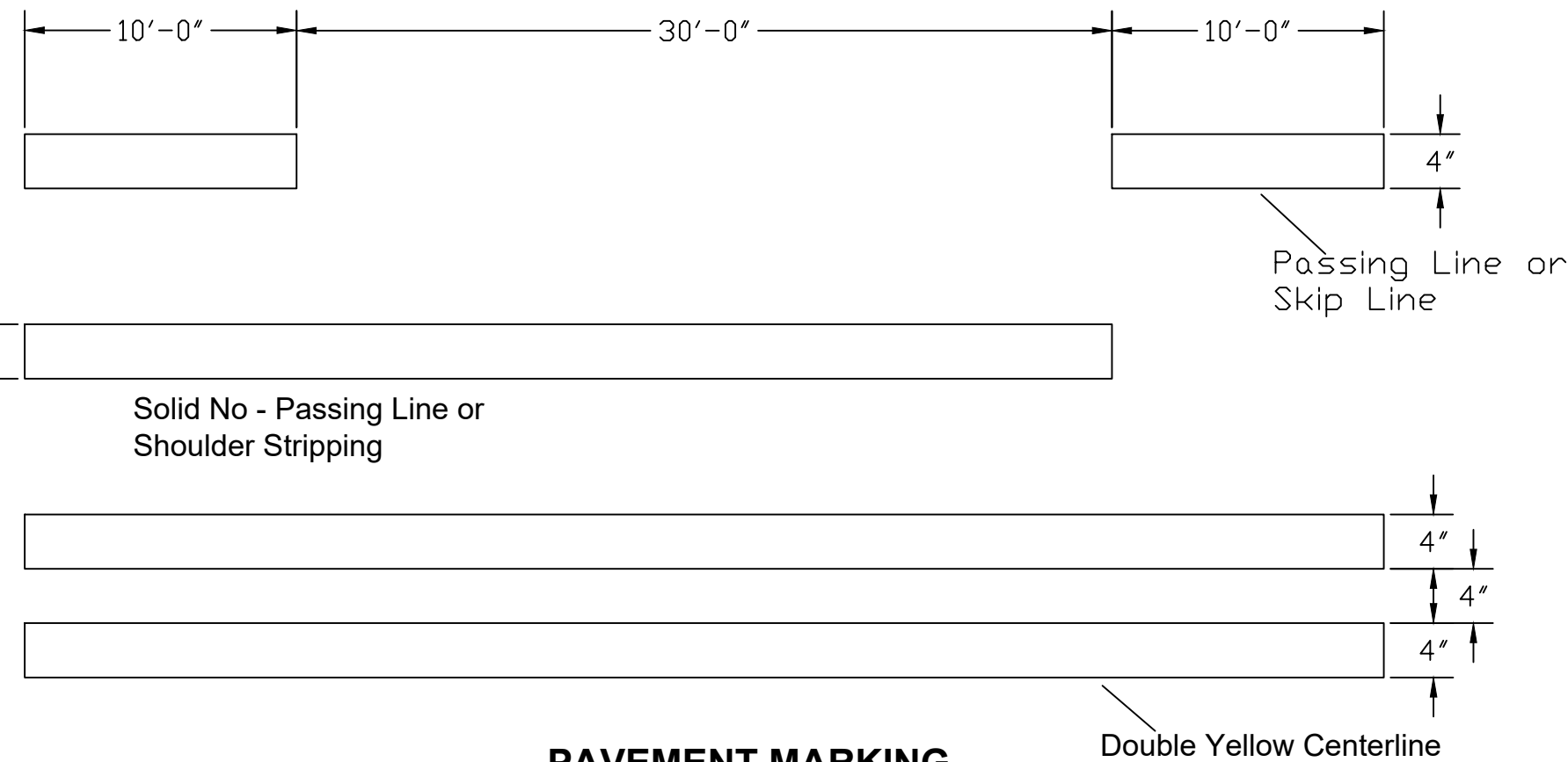
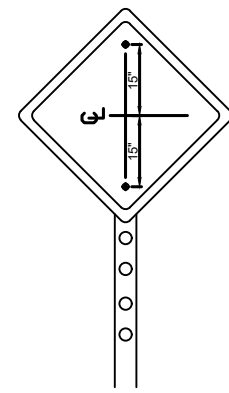
MIN. SIGN POST WEIGHTS:
Double Post Configuration 2.50 lbs/ft.
Single Post 4.00 lbs/ft.
Delineator 2.00 lbs/ft.
Mile Markers 2.00 lbs/ft.

SIGN POST NOTES:
The weight of each sign post before punching is 2.00, 2.50 or 4.00 lbs/ft. The sign post is punched with 0.375" diameter holes on 1.0" centers full length. First hole and last hole 1.0" from end of post.

Stripe Notes:
1. All paint shall comply with the Manual of Uniform Traffic Control Devices.
2. Apply Type "B" Waterborn Paint with glass beads per FP-03.



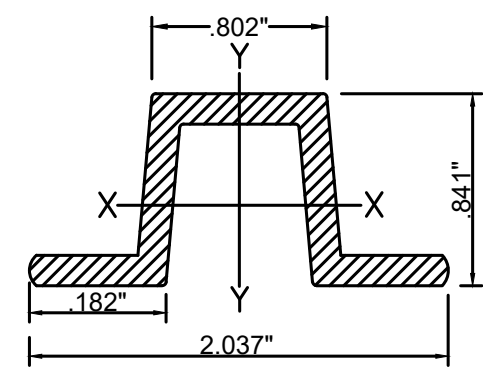
BOLT
CONFIGURATION
NTS



PAVEMENT MARKING
Typical Shoulder/Center Stripe
Dimensions
NTS

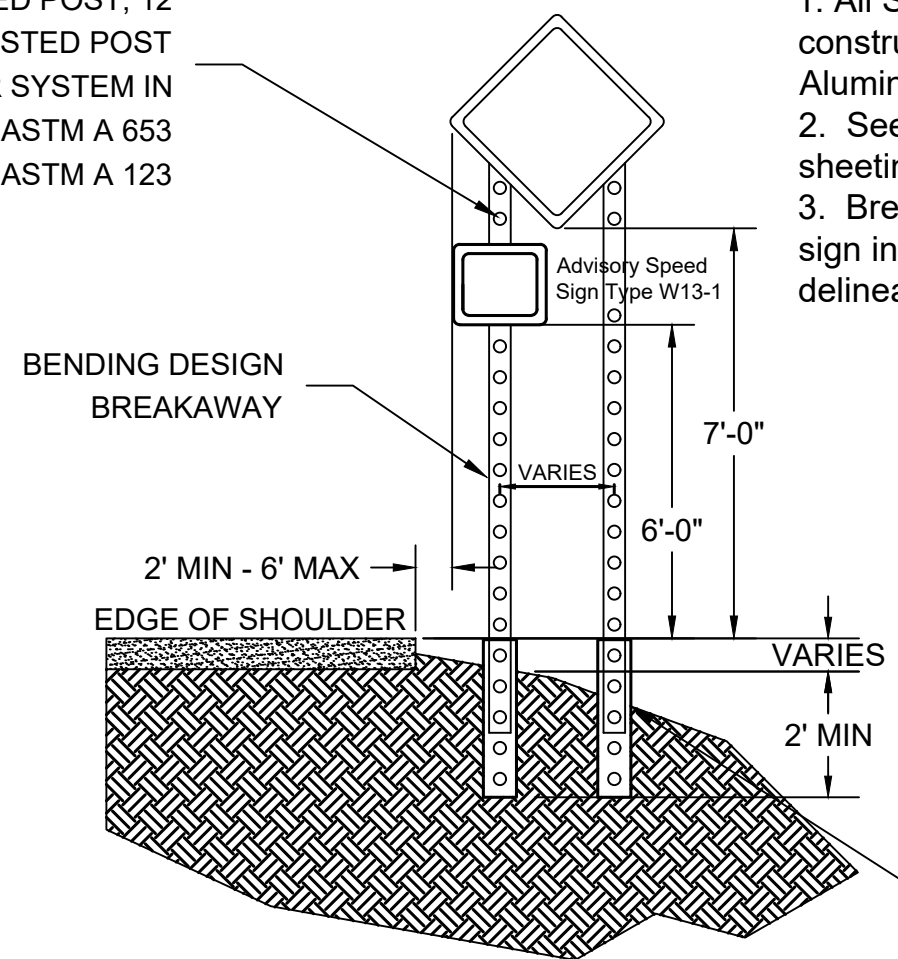


Stop Bar



TYPICAL TRAFFIC CONTROL SIGN
NTS

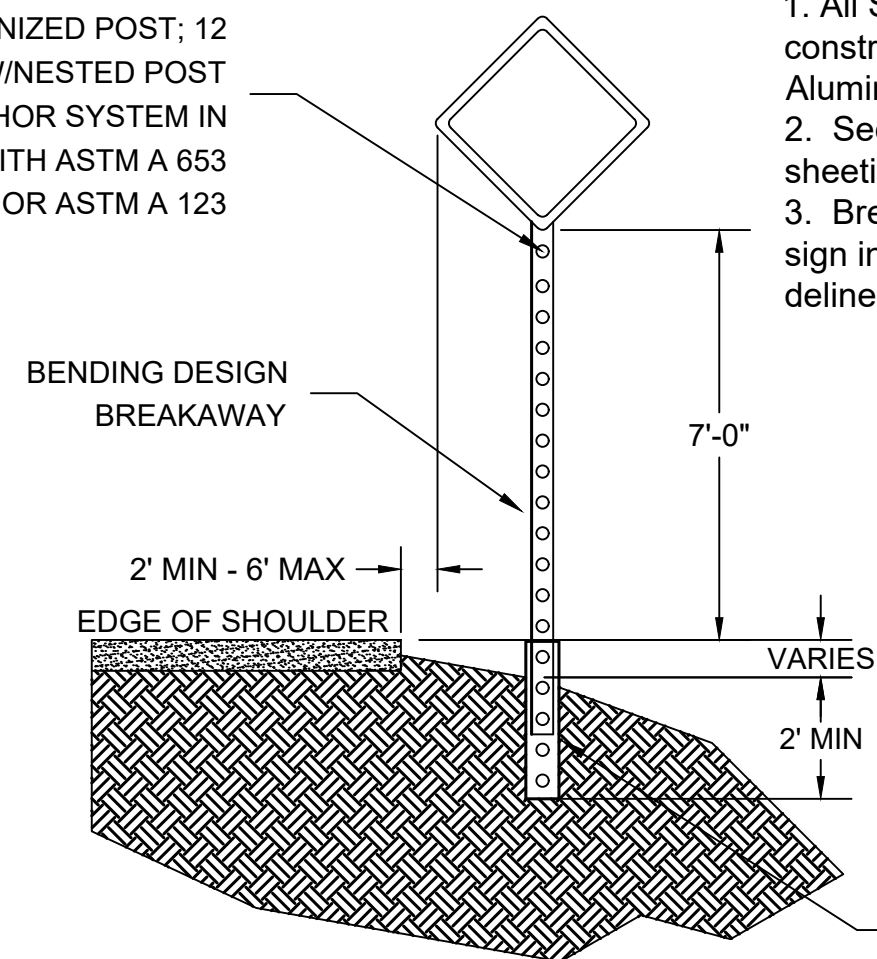
HOLES 1" FOUR SIDES, 1.75" X 1.75" HOT GALVANIZED POST; 12 GAUGE W/NESTED POST ANCHOR SYSTEM IN ACCORDANCE WITH ASTM A 653 OR ASTM A 123



Traffic Sign Notes:
1. All Sign panels shall be constructed of 0.125" Aluminum.
2. See sign schedule for sheeting type.
3. Breakaways required on all sign installations EXCEPT delineators.

ANCHOR SLEEVE (ONE SIZE LARGER THAN POST)

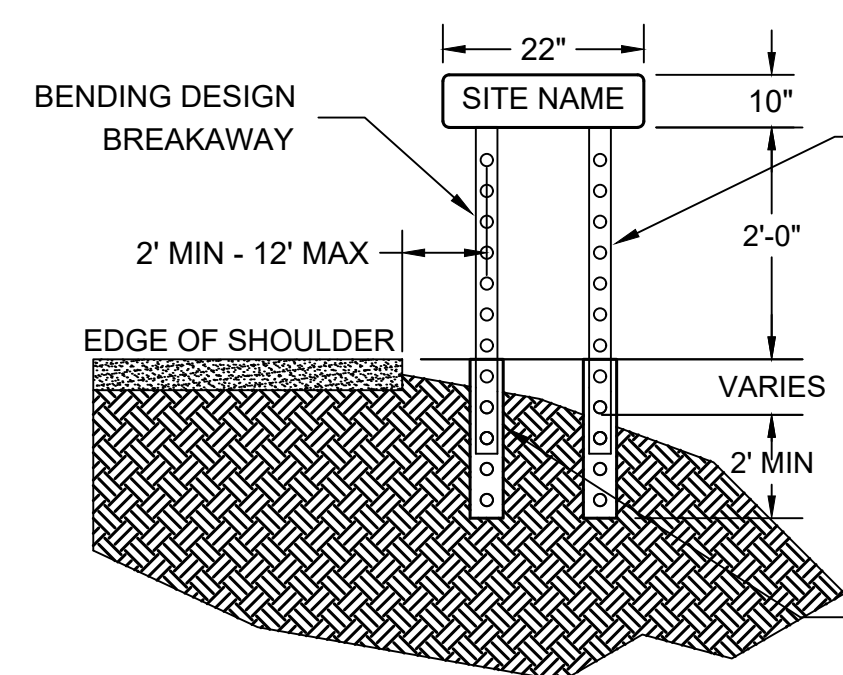
HOLES 1" FOUR SIDES, 1.75" X 1.75" HOT GALVANIZED POST; 12 GAUGE W/NESTED POST ANCHOR SYSTEM IN ACCORDANCE WITH ASTM A 653 OR ASTM A 123



TYPICAL TRAFFIC CONTROL SIGN
NTS

Traffic Sign Notes:
1. All Sign panels shall be constructed of 0.125" Aluminum.
2. See sign schedule for sheeting type.
3. Breakaways required on all sign installations EXCEPT delineators.

ANCHOR SLEEVE (ONE SIZE LARGER THAN POST)



SITE NAME PLAQUE
NTS

HOLES 1" FOUR SIDES, 1.75" X 1.75" HOT GALVANIZED POST; 12 GAUGE W/NESTED POST ANCHOR SYSTEM IN ACCORDANCE WITH ASTM A 653 OR ASTM A 123

ANCHOR SLEEVE (ONE SIZE LARGER THAN POST)

BID SET
100% DESIGN
DATE: DEC 2022

| | | | |
|--|-------------|---|-------|
| | | | |
| | | | |
| | | | |
| | | | |
| NO. | DATE | DESCRIPTION | BY |
| REVISIONS | | | |
| WHITE SANDS MISSILE RANGE, N.M. DIRECTORATE OF PUBLIC WORKS ENGINEERING DIVISION | | | |
| DRAWN BY | DESIGNED BY | REPAIR SIGNS/SPEED CONTROL WSMR MAIN POST | |
| REP. | REP. | | |
| CHECKED BY | | | |
| SUBMITTED | | | |
| PROJECT MANAGER | | | |
| RECOMMENDED | | ROADWAY TRAFFIC SIGN/PAVEMENT MARKING DETAIL | |
| BRANCH CHIEF | | | |
| APPROVED | | | |
| John Morgan | | | |
| CHIEF, ENGINEERING DIVISION | | | |
| DATE | SCALE | DRAWING NUMBER | PLATE |
| December, 2022 | NONE | WS-85110-2022-C-DT-10 | 10 |
| | | SHEET 10 OF 10 | |