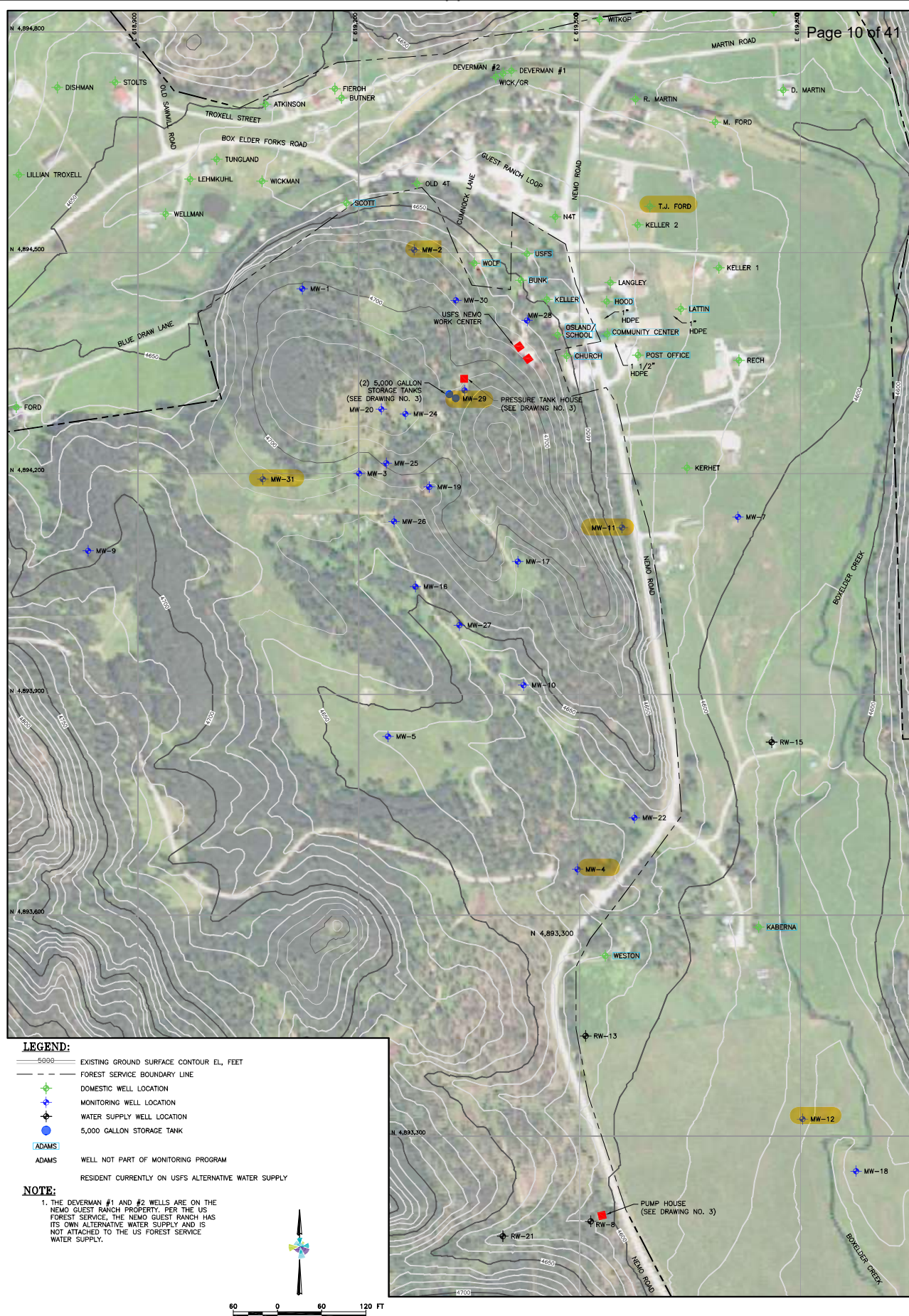





Figure 1-1
Black Hills Area Map
USFS, Black Hills, South Dakota

0 6 12 18
Scale in Miles

Figure excerpted from the RIFS (Weston, 2015)



CLIENT US FOREST SERVICE, BLACK HILLS, SOUTH DAKOTA		PROVIDED BY  amec foster wheeler		ISSUED FOR PROJECT US FOREST SERVICE WATER SUPPLY SYSTEM NEMO WORK CENTER		ISSUED DATE 18 OCT 2016	
DISCLAIMER AMEC FOSTER WHEELER PRODUCED THE INFORMATION PRESENTED ON THIS DRAWING THROUGH THE USE OF TECHNICAL INFORMATION AND PRACTICAL EXPERIENCE SPECIFIC TO ITS EFFORTS. RECEIVING THIS DRAWING DOES NOT GUARANTEE ANY RIGHTS TO SUCH TECHNICAL INFORMATION AND PRACTICAL EXPERIENCE. ANY ALTERATION OR ADAPTATION OF THE DATA OR CONTENTS OF THIS DRAWING SHALL BE AT USER'S SOLE RISK AND WITHOUT ANY LIABILITY OR LEGAL RESPONSIBILITY TO AMEC FOSTER WHEELER.		DRN BY CS		TITLE SITE LAYOUT, TOPOGRAPHY, AND WELL LOCATIONS		PROJECT No. 32106F001	
		DSN BY KS				DRAWING No. 2-1	
		CHK BY KS					
		APR BY KS				REV 0	