
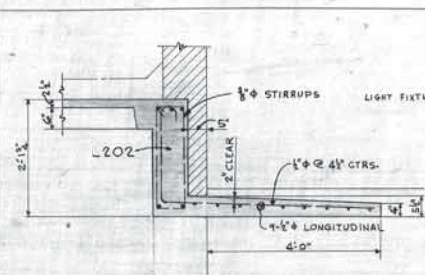


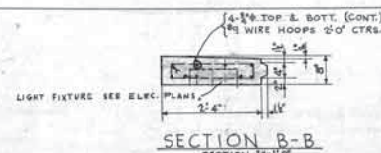
▲ TOP OF ROUGH CONC. SLAB = ELEV. 479.35
EXCEPT AS OTHERWISE SHOWN ON PLAN.

THIS DRAWING FORMS A PART OF CONTRACT NO. W-43-01-
MTC-554 MODIFICATION NO. 1 DATED 1 JULY 48

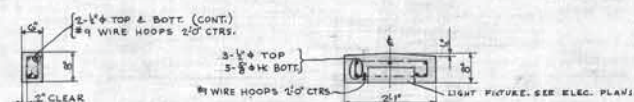
A)	2-54 CORRECTIONS & CLASSIFICATIONS	R. 6
B)	7-58 CORRECTIONS & CLASSIFICATIONS	R. 7
REVISION	DESCRIPTION	BY
	P. M. O'MEARA ASSOCIATES C. J. MAGUOLLO & G. QUICK ARCHITECTS - ENGINEERS ST. LOUIS, MO.	WAR DEPARTMENT CORPS OF ENGINEERS BOSTON DISTRICT ST. LOUIS, MO.
DRAWN BY	<div data-bbox="2455 1766 2713 1774">VETERANS ADMINISTRATION HOSPITAL</div> <div data-bbox="2501 1792 2713 1800">POPLAR BLUFF, MO.</div> <div data-bbox="2545 1806 2713 1814">200 BED G. M.</div> <div data-bbox="2473 1832 2713 1840">FIFTH FLOOR FRAMING PLAN</div>	
TRACED BY		
CHECKED BY		
SUBMITTED BY		
APPROVED	APPROVED	DATE
 C. J. Magullo Lead Engineer	 P. M. O'Meara Col. C. & D. DIST. ENGINEER	22.06.1947
<div data-bbox="2355 1806 2713 1814">SCALE: NOT TO SPEC. NO.</div> <div data-bbox="2355 1814 2713 1822">DRAWING NO. 32-01-S8</div>		
<div data-bbox="2355 1822 2713 1828">V. A PROJECT NO. 2899</div>		



SECTION A-A
SHOWING CANOPY OVER DOOR

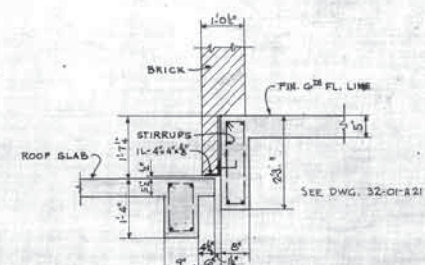
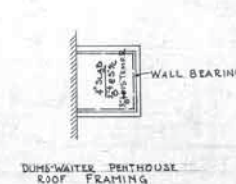


SECTION B-B

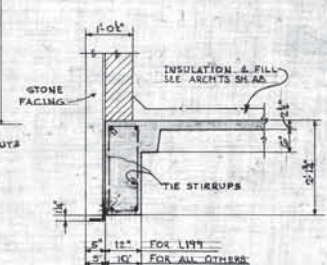
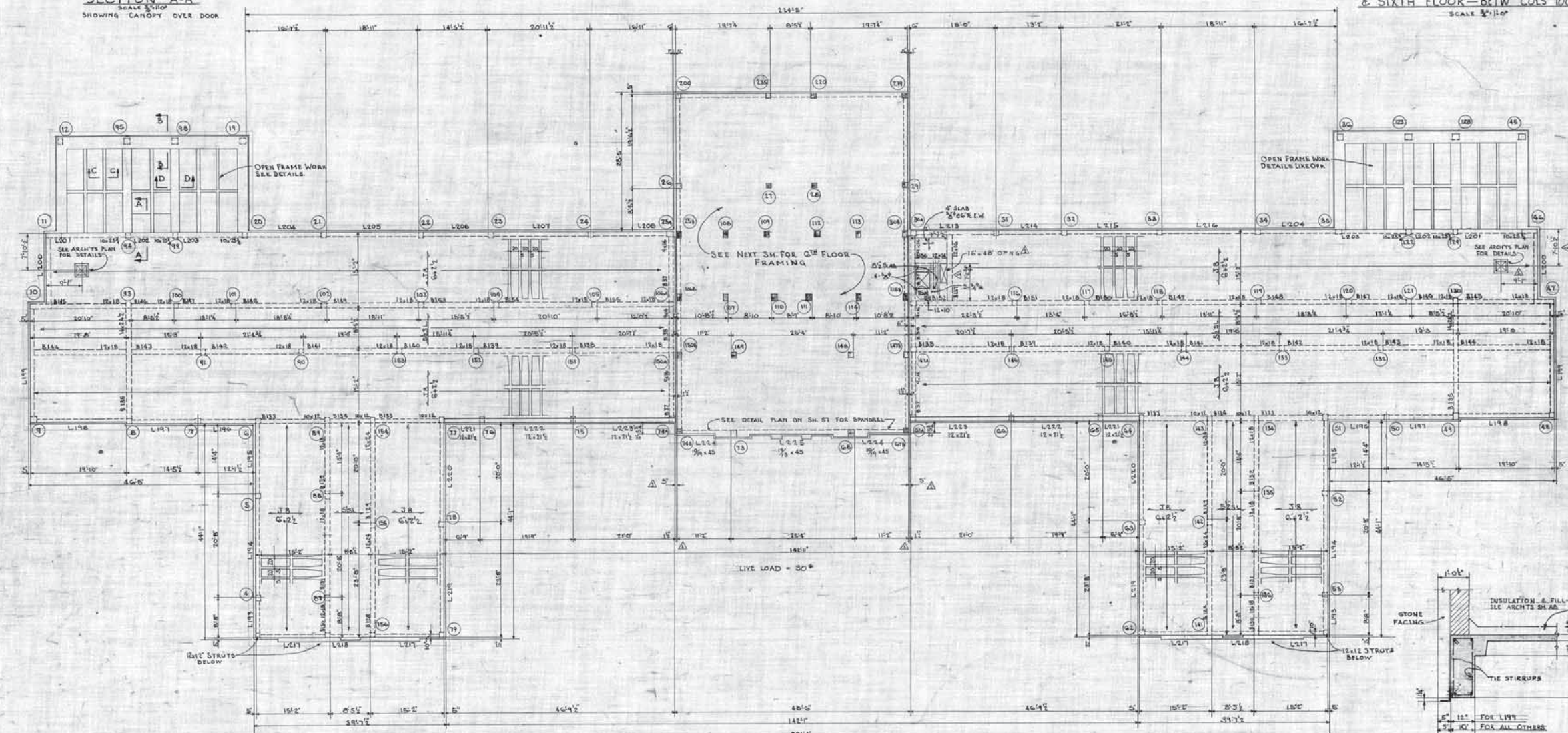


SECTION C-C

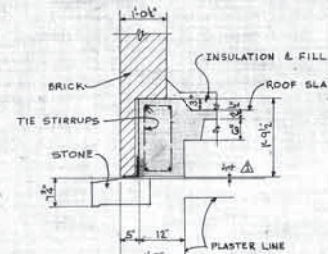
SECTION D-D



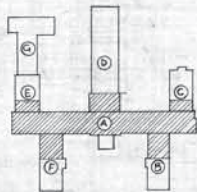
SECTION THRU EXPANSION JOINT AT ROOF
& SIXTH FLOOR-BETW COLS 106A & 150A



TYPICAL SPANDREL DETAIL
EXCEPT AS NOTED ON PLAN



SPANDREL DETAIL
THRU L221, L222 & L223



KEY PLAN

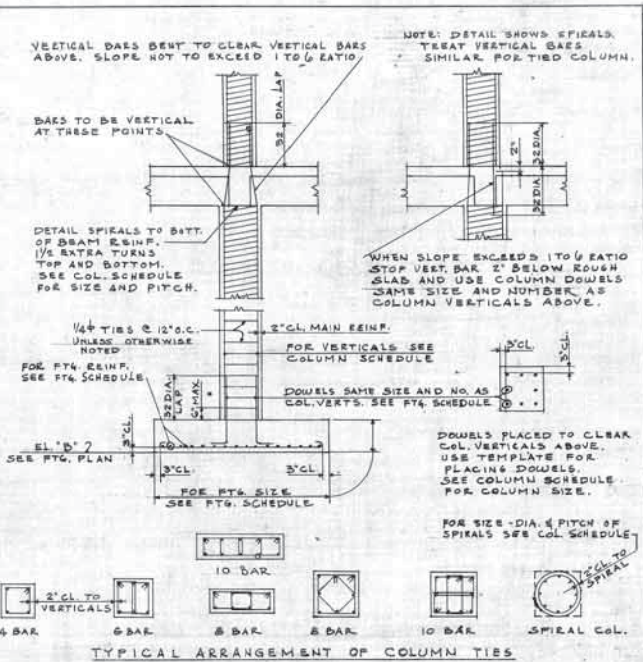
NOTES:
FOR TYPICAL DETAILS SEE---SHT. S-17
FOR COLUMN SCHEDULE SEE---SHT. S-18-S-19
FOR BEAM SCHEDULE SEE---SHT. S-21
FOR SPANDREL SCHEDULE SEE---SHT. S-22
FOR RIS SCHEDULE & TAPERED ENDS SEE---SHT. S-23

RECORD DRAWING AS CONSTRUCTED
SUBMITTED BY *[Signature]*
APPROVED BY *[Signature]* 9-30

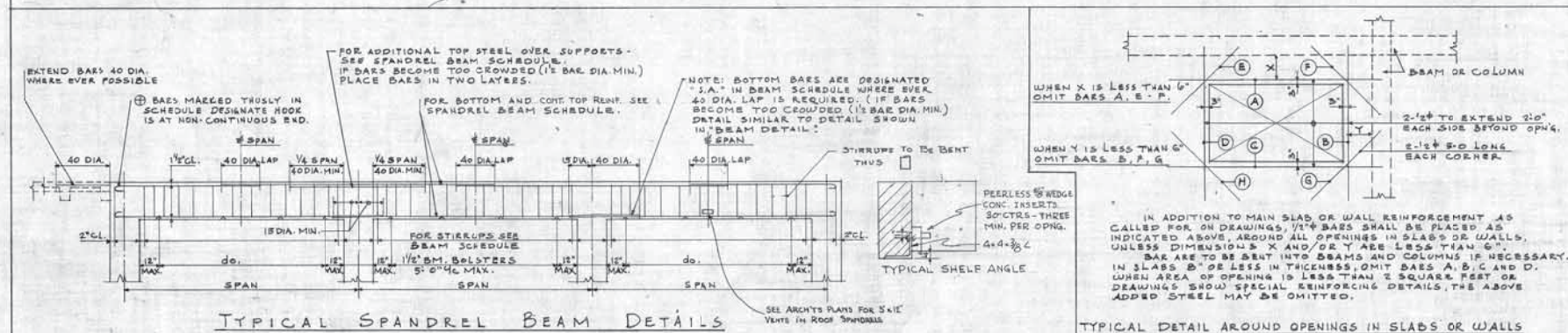
ROOF FRAMING PLAN
TOP OF ROUGH CONC. SLAB ELEV. 430.88
EXCEPT OTHERWISE SHOWN ON PLAN

THIS DRAWING FORMS A PART OF CONTRACT NO. W-05-050
554 MODIFICATION NO. 1 DATED 1-27-48

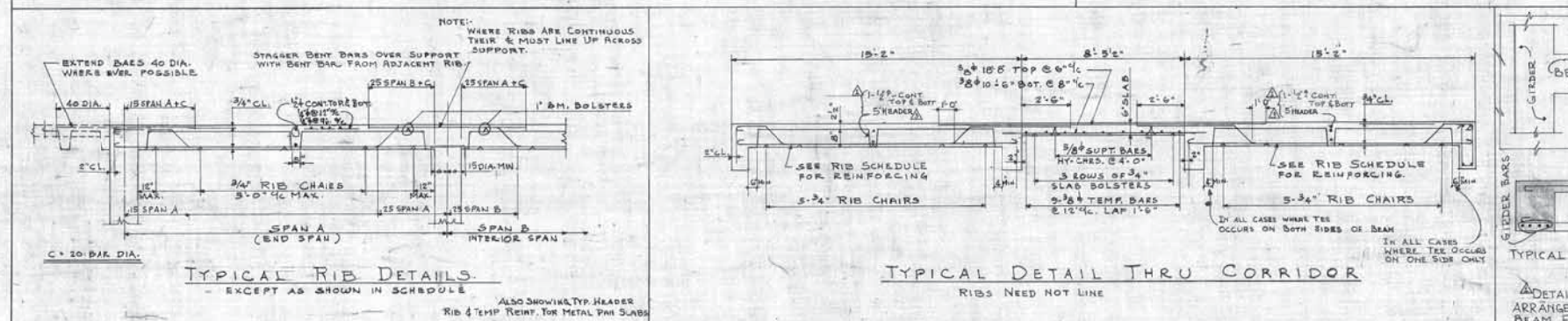
REVISION	DATE	DESCRIPTION	BY
1	2-2-48	CORRECTIONS & CLARIFICATIONS	FJS
DRAWN BY: W.A.A. CHECKED BY: E.L.W. SUBMITTED BY: <i>[Signature]</i> APPROVED BY: <i>[Signature]</i> 9-30			
VETERANS ADMINISTRATION HOSPITAL POPLAR BLUFF, MO. 200 BED G.M. ROOF FRAMING PLAN			
DATE: 20. OCT. 1947 SCALE: NOTED SPEC. NO. 32-01-S9			V.A. PROJECT NO. 2899



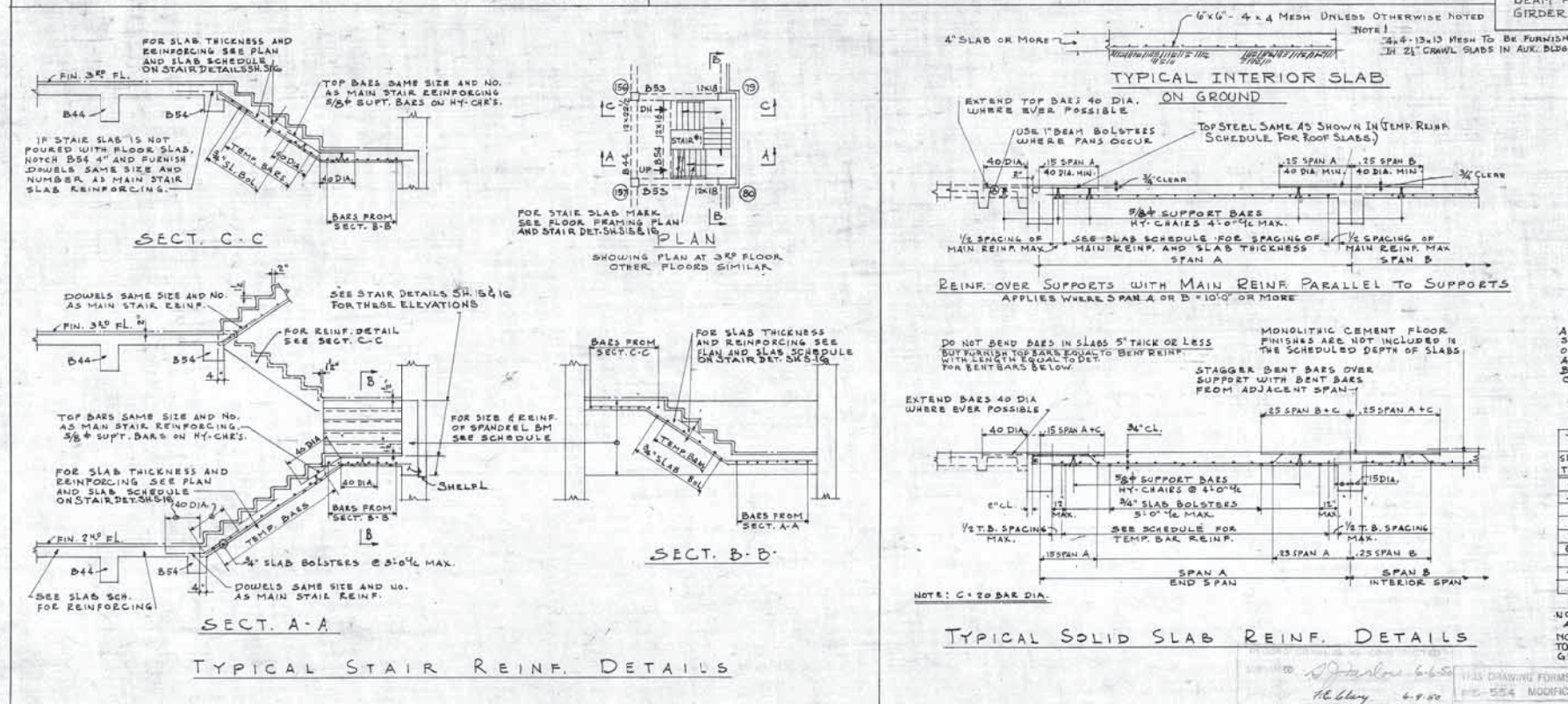
TYPICAL COLUMN AND FOOTING DETAILS



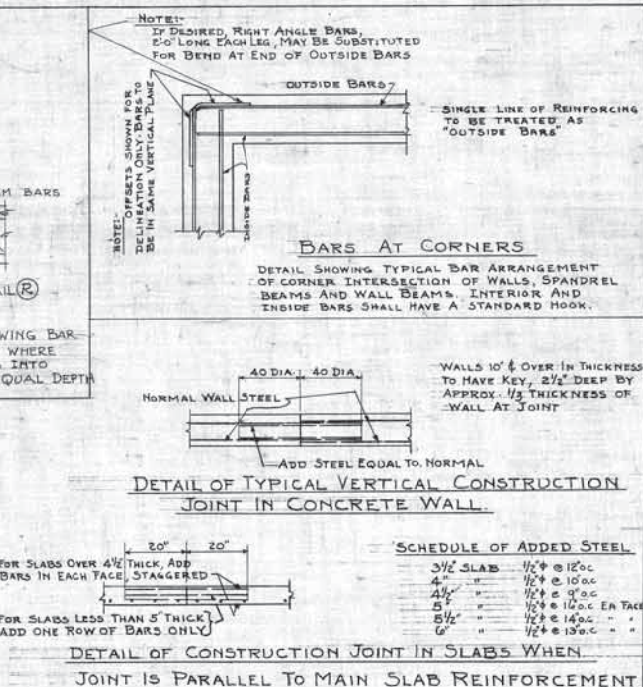
TYPICAL DETAIL AROUND OPENINGS IN SLABS OR WALLS



TYPICAL DETAIL THRU CORRIDOR



TYPICAL SOLID SLAB REINF. DETAILS



DETAIL OF CONSTRUCTION JOINT IN SLABS WHEN
JOINT IS PARALLEL TO MAIN SLAB REINFORCEMENT

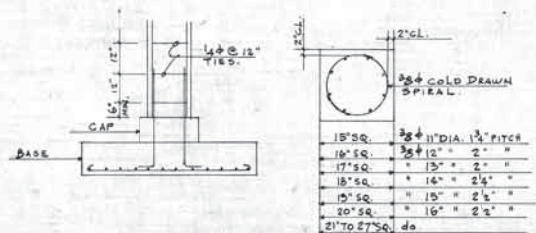
SLAB THK.	TEMP. REINF. & SPACING	
	FLOOR SLAB	ROOF SLAB
4"	$\frac{3}{8}$ ϕ @ 18"	$\frac{3}{8}$ ϕ @ 15"
4½"	$\frac{3}{8}$ ϕ @ 15"	$\frac{3}{8}$ ϕ @ 12"
5"	$\frac{3}{8}$ ϕ @ 12"	$\frac{3}{8}$ ϕ @ 12"
5½"	$\frac{3}{8}$ ϕ @ 12"	$\frac{1}{2}$ ϕ @ 18"
6"	$\frac{3}{8}$ ϕ @ 12"	$\frac{1}{2}$ ϕ @ 16"
6½"	$\frac{1}{2}$ ϕ @ 18"	$\frac{1}{2}$ ϕ @ 15"
7"	$\frac{1}{2}$ ϕ @ 18"	$\frac{1}{2}$ ϕ @ 12"
7½"	$\frac{1}{2}$ ϕ @ 15"	$\frac{1}{2}$ ϕ @ 12"
8"	$\frac{1}{2}$ ϕ @ 15"	$\frac{1}{2}$ ϕ @ 12"

NOTE: ROOF SLAB ALSO INCLUDES
ALL SLABS EXPOSED TO WEATHER.
NOTE: TEMP REINF SCHEDULE PERTAINS
TO ALL SLABS EXCEPT THOSE ON THE
GROUND

TYP. DET. FOR ALL OPNGS. IN CONC. WALL				
1-1-68 CORRECTIONS 2-2-68 CORRECTIONS & CLARIFICATIONS		F-16 F-16		
REVISION	DATE	DESCRIPTION	BY	
P. M. O'MEARA ASSOCIATES G. E. CAGLIOLLO & C. E. QUINN ARCHITECTS - ENGINEERS ST. LOUIS, MO.		WAR DEPARTMENT CORPS OF ENGINEERS ST. LOUIS DISTRICT ST. LOUIS, MO.		
DRAWN BY A.S.		VETERANS ADMINISTRATION HOSPITAL		
TRACED BY A.S.		POPLAR BLUFF, MO.		
CHECKED BY W.P.		200 BED G.M.		
SUBMITTED		REINF. STEEL DETAILS		
APPROVED: <i>[Signature]</i> DATE: 20 OCT. 1967		APPROVED: <i>[Signature]</i> DATE: 20 OCT. 1967		
SPEC. NO. 1 DRAWING NUMBER		SCALE: NONE SPEC. NO. 1 DRAWING NUMBER		
V. A. PROJECT NO. 2899		32-01-517		

		COLUMN AND FOOTING SCHEDULE																										COL-39 IS OUT		
STORY	COLUMN NUMBER	1-36 59-82	2-35 60-81	3-34	4-33	5	6	7-50 65-76	8-49	9-48	11	11A	12-13-18-19 36-37-44-45	14	14A	15	16	16A	17	17A	20-35	21-22-23-24 31-32-33-34 52	25A-30A	35B-30B	26-29	27-28	10 47	46	38-43	-42
SEVENTH	SIZE																													
	VERTICALS																													
SIXTH	SIZE																													
	VERTICALS																													
FIFTH	SIZE																													
	VERTICALS																													
FOURTH	SIZE																													
	VERTICALS																													
THIRD	SIZE																													
	VERTICALS																													
SECOND	SIZE																													
	VERTICALS																													
FIRST	SIZE																													
	VERTICALS																													
SUB-BASEMENT	SIZE																													
	VERTICALS																													
COLUMN FOOTINGS	SIZE																													
	VERTICALS																													
DOWELS	SIZE																													
	VERTICALS																													
CAP	SIZE																													
	VERTICALS																													
REIN. EACH WAY	SIZE																													
	VERTICALS																													

COLUMN AND FOOTING SCHEDULE																														
STORY	COLUMN NUMBER	40, 41 (OUT)	51	57-58 63-64	61-60	62-73	63	64	66-75	67A-74A	67B-74B	68-73	69-72 69A, 72A	70-71	77	78	85 158-159-158	86 137	87 136	88	89	90 153-146-151	91-103-104-105 116-117-118-119 135-143-144-145 152-155	92 131	93 130	94 129	95-96-97-98 123-124-127-128	99 122	100 121	
SEVENTH	SIZE											12x12																		
	VERTICALS											4-58φ																		
SIXTH	SPIRAL OR TIES											TIES																		
	SIZE											12x12																		
FIFTH	VERTICALS											4-58φ																		
	SPIRAL OR TIES											TIES																		
FOURTH	SIZE	12x12			12x12	12x12	12x12	12x12	12x12	12x12	12x12	12x12				12x12	12x12			12x12	12x12	12x12	12x12	12x12	12x12	12x12	12x12	12x12	12x12	12x12
	VERTICALS	4-58φ			4-58φ	4-58φ	4-58φ	4-58φ	4-58φ	4-58φ	4-58φ	6-78φ				4-58φ	4-58φ			4-58φ	4-58φ	4-58φ	4-58φ	4-58φ	4-58φ	4-58φ	4-58φ	4-58φ	4-58φ	4-58φ
THIRD	SPIRAL OR TIES				TIES	TIES	TIES	TIES	TIES	TIES	TIES	TIES				TIES	TIES			TIES	TIES	TIES	TIES	TIES	TIES	TIES	TIES	TIES	TIES	TIES
	SIZE	18x13	12x14	26x12	20x12	14x14	18x13	18x13	12x12	13x13	18x13	18x13				13x13	14x14	12x14	13x13	14x14	14x14	13x13	16x16	14x14	12x12	14x14	12x12	12x12	12x12	12x12
SECOND	VERTICALS	4-58φ	4-58φ	8-78φ	8-78φ	4-1φ	4-58φ	4-1φ	4-1φ	4-58φ	4-58φ	8-1φ				4-1φ	4-1φ	4-58φ	6-78φ	4-58φ	4-58φ	4-58φ	4-58φ	4-58φ	4-58φ	4-58φ	4-58φ	4-58φ	4-58φ	4-58φ
	SPIRAL OR TIES	TIES	TIES	TIES	TIES	TIES	TIES	TIES	TIES	TIES	TIES	SPIRAL				TIES	TIES	TIES	TIES	TIES	TIES	TIES	TIES	TIES	TIES	TIES	TIES	TIES	TIES	TIES
FIRST	SIZE	18x15	12x14	20x12	16x14	14x14	18x15	12x12	14x14	17x13	17x13					14x14	16x16	14x14	15x15	15x15	16x16	15x15	16x16	14x14	15x15	15x15	15x15	15x15	15x15	15x13
	VERTICALS	6-78φ	4-58φ	8-78φ	8-78φ	6-1φ	6-1φ	6-1φ	6-1φ	4-78φ	4-78φ	9-1φ				4-58φ	6-1φ	6-78φ	4-1φ	6-1φ	6-78φ	4-78φ	6-78φ	6-78φ	6-78φ	6-78φ	6-78φ	6-78φ	4-1φ	4-58φ
SUB-BASEMENT	SPIRAL OR TIES	TIES	TIES	TIES	TIES	TIES	TIES	TIES	TIES	TIES	TIES	SPIRAL				TIES	TIES	TIES	TIES	TIES	TIES	TIES	TIES	TIES	TIES	TIES	TIES	TIES	TIES	TIES
	SIZE	16x16	13x14	40x12	40x12	16x16	15x15	15x15	13x13	18x15	18x15					16x16	15x15	15x15	15x15	16x16	16x16	16x16	16x16	15x15	16x16	16x16	16x16	16x16	16x16	16x16
COLUMN FOOTINGS	VERTICALS	6-78φ	4-58φ	8-78φ	8-78φ	6-1φ	6-1φ	6-1φ	4-1φ	4-1φ	4-1φ	9-1φ				6-1φ	6-1φ	6-78φ	6-1φ	6-1φ	6-78φ	6-1φ	6-1φ	6-78φ	6-1φ	6-1φ	6-78φ	6-1φ	6-78φ	6-78φ
	SPIRAL OR TIES	SPIRAL	TIES	TIES	TIES	SPIRAL	SPIRAL	SPIRAL	SPIRAL	TIES	TIES	SPIRAL				SPIRAL	SPIRAL	SPIRAL	SPIRAL	SPIRAL	SPIRAL	SPIRAL	SPIRAL	SPIRAL	SPIRAL	SPIRAL	SPIRAL	SPIRAL	SPIRAL	SPIRAL
DOVELS	SIZE	11x17				18x18	17x17	15x15	15x15	16x16	22x22					16x16														
	VERTICALS	9-1φ				8-1φ	9-1φ	8-1φ	8-1φ	8-1φ	11-1φ					9-1φ														
REIN. EACH WAY	SIZE																													
	VERTICALS																													
CAP	SIZE	26x26x10	26x26x10	26x26x10	26x26x10	26x26x10	26x26x10	26x26x10	26x26x10	26x26x10	26x26x10	26x26x10				26x26x10	26x26x10	26x26x10	26x26x10	26x26x10	26x26x10	26x26x10	26x26x10	26x26x10	26x26x10	26x26x10	26x26x10	26x26x10	26x26x10	26x26x10
	BASE	7-1x7-1x24	7-1x7-1x24	7-1x7-1x24	7-1x7-1x24	7-1x7-1x24	7-1x7-1x24	7-1x7-1x24	7-1x7-1x24	7-1x7-1x24	7-1x7-1x24	7-1x7-1x24				7-1x7-1x24	7-1x7-1x24	7-1x7-1x24	7-1x7-1x24	7-1x7-1x24	7-1x7-1x24	7-1x7-1x24	7-1x7-1x24	7-1x7-1x24	7-1x7-1x24	7-1x7-1x24	7-1x7-1x24	7-1x7-1x24	7-1x7-1x24	7-1x7-1x24
REIN. EACH WAY	SIZE	21-58φ	14-58φ	11-58φ	11-58φ	11-58φ	11-58φ	11-58φ	11-58φ	11-58φ	11-58φ	11-58φ				21-58φ	21-58φ	21-58φ	21-58φ	21-58φ	21-58φ	21-58φ	21-58φ	21-58φ	21-58φ	21-58φ	21-58φ	21-58φ	21-58φ	21-58φ
	VERTICALS																													



COLUMN TIES AND SPIRAL REINFORCING.

NOTE: FOR ALL COLUMN SIZES IN SCHEDULE ABOVE THE FIRST FIGURE REPRESENTS THE LEFT TO RIGHT DIRECTION OF THE COLUMN AS SHOWN ON PLANS. THUS:

FOOTING SIZES SIMILAR



REVISIONS
DATE
BY
DESCRIPTION

REVISION	DATE	BY	DESCRIPTION
1	10-10-47	J.L.M.	MODIFICATION NO. 1
2	10-10-47	J.L.M.	MODIFICATION NO. 2
3	10-10-47	J.L.M.	MODIFICATION NO. 3
4	10-10-47	J.L.M.	MODIFICATION NO. 4
5	10-10-47	J.L.M.	MODIFICATION NO. 5
6	10-10-47	J.L.M.	MODIFICATION NO. 6
7	10-10-47	J.L.M.	MODIFICATION NO. 7
8	10-10-47	J.L.M.	MODIFICATION NO. 8
9	10-10-47	J.L.M.	MODIFICATION NO. 9
10	10-10-47	J.L.M.	MODIFICATION NO. 10
11	10-10-47	J.L.M.	MODIFICATION NO. 11
12	10-10-47	J.L.M.	MODIFICATION NO. 12
13	10-10-47	J.L.M.	MODIFICATION NO. 13
14	10-10-47	J.L.M.	MODIFICATION NO. 14
15	10-10-47	J.L.M.	MODIFICATION NO. 15
16	10-10-47	J.L.M.	MODIFICATION NO. 16
17	10-10-47	J.L.M.	MODIFICATION NO. 17
18	10-10-47	J.L.M.	MODIFICATION NO. 18
19	10-10-47	J.L.M.	MODIFICATION NO. 19
20	10-10-47	J.L.M.	MODIFICATION NO. 20
21	10-10-47	J.L.M.	MODIFICATION NO. 21
22	10-10-47	J.L.M.	MODIFICATION NO. 22
23	10-10-47	J.L.M.	MODIFICATION NO. 23
24	10-10-47	J.L.M.	MODIFICATION NO. 24
25	10-10-47	J.L.M.	MODIFICATION NO. 25
26	10-10-47	J.L.M.	MODIFICATION NO. 26
27	10-10-47	J.L.M.	MODIFICATION NO. 27
28	10-10-47	J.L.M.	MODIFICATION NO. 28
29	10-10-47	J.L.M.	MODIFICATION NO. 29
30	10-10-47	J.L.M.	MODIFICATION NO. 30
31	10-10-47	J.L.M.	MODIFICATION NO. 31
32	10-10-47	J.L.M.	MODIFICATION NO. 32
33	10-10-47	J.L.M.	MODIFICATION NO. 33
34	10-10-47	J.L.M.	MODIFICATION NO. 34
35	10-10-47	J.L.M.	MODIFICATION NO. 35
36	10-10-47	J.L.M.	MODIFICATION NO. 36
37	10-10-47	J.L.M.	MODIFICATION NO. 37
38	10-10-47	J.L.M.	MODIFICATION NO. 38
39	10-10-47	J.L.M.	MODIFICATION NO. 39
40	10-10-47	J.L.M.	MODIFICATION NO. 40
41	10-10-47	J.L.M.	MODIFICATION NO. 41
42	10-10-47	J.L.M.	MODIFICATION NO. 42
43	10-10-47	J.L.M.	MODIFICATION NO. 43
44	10-10-47	J.L.M.	MODIFICATION NO. 44
45	10-10-47	J.L.M.	MODIFICATION NO. 45
46	10-10-47	J.L.M.	MODIFICATION NO. 46
47	10-10-47	J.L.M.	MODIFICATION NO. 47
48	10-10-47	J.L.M.	MODIFICATION NO. 48
49	10-10-47	J.L.M.	MODIFICATION NO. 49
50	10-10-47	J.L.M.	MODIFICATION NO. 50
51	10-10-47	J.L.M.	MODIFICATION NO. 51
52	10-10-47	J.L.M.	MODIFICATION NO. 52
53	10-10-47	J.L.M.	MODIFICATION NO. 53
54	10-10-47	J.L.M.	MODIFICATION NO. 54
55	10-10-47	J.L.M.	MODIFICATION NO. 55
56	10-10-47	J.L.M.	MODIFICATION NO. 56
57	10-10-47	J.L.M.	MODIFICATION NO. 57
58	10-10-47	J.L.M.	MODIFICATION NO. 58
59	10-10-47	J.L.M.	MODIFICATION NO. 59
60	10-10-47	J.L.M.	MODIFICATION NO. 60
61	10-10-47	J.L.M.	MODIFICATION NO. 61
62	10-10-47	J.L.M.	MODIFICATION NO. 62
63	10-10-47	J.L.M.	MODIFICATION NO. 63
64	10-10-47	J.L.M.	MODIFICATION NO. 64
65	10-10-47	J.L.M.	MODIFICATION NO. 65
66	10-10-47	J.L.M.	MODIFICATION NO. 66
67	10-10-47	J.L.M.	MODIFICATION NO. 67
68	10-10-47	J.L.M.	MODIFICATION NO. 68
69	10-10-47	J.L.M.	MODIFICATION NO. 69
70	10-10-47	J.L.M.	MODIFICATION NO. 70
71	10-10-47	J.L.M.	MODIFICATION NO. 71
72	10-10-47	J.L.M.	MODIFICATION NO. 72
73	10-10-47	J.L.M.	MODIFICATION NO. 73
74	10-10-47	J.L.M.	MODIFICATION NO. 74
75	10-10-47	J.L.M.	MODIFICATION NO. 75
76	10-10-47	J.L.M.	MODIFICATION NO. 76
77	10-10-47	J.L.M.	MODIFICATION NO. 77
78	10-10-47	J.L.M.	MODIFICATION NO. 78
79	10-10-47	J.L.M.	MODIFICATION NO. 79
80	10-10-47	J.L.M.	MODIFICATION NO. 80
81	10-10-47	J.L.M.	MODIFICATION NO. 81
82	10-10-47	J.L.M.	MODIFICATION NO. 82
83	10-10-47	J.L.M.	MODIFICATION NO. 83
84	10-10-47	J.L.M.	MODIFICATION NO. 84
85	10-10-47	J.L.M.	MODIFICATION NO. 85
86	10-10-47	J.L.M.	MODIFICATION NO. 86
87	10-10-47	J.L.M.	MODIFICATION NO. 87
88	10-10-47	J.L.M.	MODIFICATION NO. 88
89	10-10-47	J.L.M.	MODIFICATION NO. 89
90	10-10-47	J.L.M.	MODIFICATION NO. 90
91	10-10-47	J.L.M.	MODIFICATION NO. 91
92	10-10-47	J.L.M.	MODIFICATION NO. 92
93	10-10-47	J.L.M.	MODIFICATION NO. 93
94	10-10-47	J.L.M.	MODIFICATION NO. 94
95	10-10-47	J.L.M.	MODIFICATION NO. 95
96	10-10-47	J.L.M.	MODIFICATION NO. 96
97	10-10-47	J.L.M.	MODIFICATION NO. 97
98	10-10-47	J.L.M.	MODIFICATION NO. 98
99	10-10-47	J.L.M.	MODIFICATION NO. 99
100	10-10-47	J.L.M.	MODIFICATION NO. 100

V.A. PROJECT NO. 2899

32-01-518

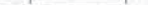
C O L U M N A N D F O O T I N G S C H E D U L E ~

[illegible]

C O L U M N A N D F O O T I N G S C H E D U L E ~

[illegible]

Δ NOTE:
SEE SHEET 32-01-SI FOR COL'S P.I. TO PG INC

Δ NOTE:
FOR ALL COLUMN SIZES ON SCHEDULE ABOVE THE 131 FIGURE REPRESENTS THE LEFT TO RIGHT DIRECTION OF THE COL. AS SHOWN ON PLANS. THUS — 

519

(C)	R.2-48	MODIFICATION #1	J.11
	R.2-48	CORRECTIONS & CLARIFICATION	P.L.G.
A	R.1-48	CORRECTIONS & CLARIFICATIONS	R.W.W.
REVISION	DATE	DESCRIPTION	BY
	P. M. OMBARA ASSOCIATES G. J. MAGUOLIO G. E. QUICK ARCHITECTS - ENGINEERS ST. LOUIS, MO.	WAR DEPARTMENT CORPS OF ENGINEERS ST. LOUIS DISTRICT ST. LOUIS, MO.	
DRAWN BY	A.S.	VETERANS ADMINISTRATION HOSPITAL	
TRACED BY	A.S.	POPLAR BLUFF, MO.	
CHECKED BY	J. L. H.	200 RED G.	
SUBMITTED	COL. & FTG. SCHEDULE		
APPROVED	APPROVED	DATE	
<i>[Signature]</i>	<i>[Signature]</i>	20-OCT-1947	
COL. & FTG. SCHEDULE		DRAWING NO. 25-25-25	
SCALE		SHEET NUMBER	
VVA PROJECT NO. 2528		32-01 S19	

REINFORCING PER BEAM

THIS DRAWING FORMS A PART OF CONTRACT NO. W 02-050
-C-554 MODIFICATION NO. 1 DATED JANUARY 42

REINFORCING PER BEAM

52

2-240	CORRECTIONS & CLARIFICATIONS	T.O.
2-148	CORRECTIONS & CLARIFICATIONS	REVIEW
REVISION DATE	DESCRIPTION	BY
P. M. O'NEARA ASSOCIATES G. J. MAGDULO ARCHITECTS - ENGINEERS ST. LOUIS, MO.	WAR DEPARTMENT CORPS OF ENGINEERS ST. LOUIS DISTRICT ST. LOUIS, MO.	
DRAWN BY	VETERANS ADMINISTRATION HOSPITAL	
TRACED BY	POPULAR BLUFF, MO.	
CHECKED BY	200 BED G.M.	
SUBMITTED BY	BEAM SCHEDULE	
APPROVED: <i>[Signature]</i> REL. CHAIRMAN	APPROVED: <i>[Signature]</i> COL. C. E. SURFACE, Engineer	DATE: 20 OCT 1947
SCALE		SPEC. NO.
DRAWING NUMBER		
V. A. PROJECT NO. 2899		32- 01 - S20

B E A M S C H E D U L E

[illegible]

BEAM SCHEDULE

[illegible]

NOTES:
SEE NOTES ON SHT 520

11-48		CORRECTIONS		P. 66	
REVISION	DATE	DESCRIPTION		BY	
P. M. OMEARA ASSOCIATES G. J. MAGUIOLO G. E. QUICK ARCHITECTS - ENGINEERS ST. LOUIS, MO.		WAR DEPARTMENT COMPS OF ENGINEERS ST. LOUIS DISTRICT ST. LOUIS, MO.			
DRAWN BY	A. S.	VETERANS ADMINISTRATION HOSPITAL			
TRACED BY	A. S.	FOPULAR BLUFF, MO.			
CHECKED BY	G. 4300	200 BED G. M.			
SUBMITTED		BRAM SCHEDULE			
APPROVED:	<i>[Signature]</i> W. D. DUBOIS W. D. DUBOIS	APPROVED:	<i>[Signature]</i>	DATE	20 OCT. 1947
SCALE		C. E. HARTNEY - ARCHITECT			
DRAWING NUMBER		SPEC. NO. 10-200-100-20-20			
V. A. PROJECT NO. 2899		32 - 01 - 522			

S P A N D R E L B E A M S C H E D U L E S

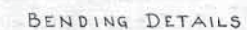
No. of Beams							REINFORCING PER SPANDREL BEAM									
SEVENTH	SIXTH	FIFTH	FOURTH	THIRD	SECOND	FIRST	BEAM MARK	W/D	STRAIGHT HOOKED	REMARKS	CONTINUOUS BARS IN TOP	ADDITIONAL TOP BARS OVER SUPPORTS	STIRRUPS			
NO. SIZE	NO. SIZE	NO. SIZE	NO. SIZE	NO. SIZE	NO. SIZE	NO. SIZE			NO. SIZE		NO. SIZE	NO. SIZE	NO. SIZE			
2							L176	10/34	2	1"	2	1"	2	1"		
2							L177	10/34	2	1"	2	1"	2	1"		
2							L178	10/34	2	1"	2	1"	2	1"		
2							L179	10/34	2	1"	2	1"	2	1"		
2							L180	10/34	2	1"	2	1"	2	1"		
2							L181	10/34	2	1"	2	1"	2	1"		
1							L182	10/34	2	1"	2	1"	2	1"		
1							L183	10/34	2	1"	2	1"	2	1"		
1							L184	10/34	2	1"	2	1"	2	1"		
2							L185	10/34	2	1"	2	1"	2	1"		
1							L186	10/34	2	1"	2	1"	2	1"		
1							L187	10/34	2	1"	2	1"	2	1"		
1							L188	10/34	2	1"	2	1"	2	1"		
SEE DETAILS SH. ST FOR VARIOUS																
2							L193	10/28	2	1"	2	1"	2	1"		
2							L194	10/28	2	1"	2	1"	2	1"		
2							L195	10/28	2	1"	2	1"	2	1"		
2							L196	10/28	2	1"	2	1"	2	1"		
2							L197	10/28	2	1"	2	1"	2	1"		
2							L198	10/28	3	1"	2	1"	2	1"		
2							L199	10/28	3	1"	2	1"	2	1"		
2							L200	10/28	2	1"	2	1"	2	1"		
2							L201	10/28	2	1"	2	1"	2	1"		
2							L202	10/28	2	1"	2	1"	2	1"		
2							L203	10/28	2	1"	2	1"	2	1"		
1							L204	10/28	2	1"	2	1"	2	1"		
1							L205	10/28	2	1"	2	1"	2	1"		
1							L206	10/28	2	1"	2	1"	2	1"		
1							L207	10/28	2	1"	2	1"	2	1"		
1							L208	10/28	2	1"	2	1"	2	1"		
1							L209	8/40	2	1"	2	1"	2	1"		
1							L210	8/40	2	1"	2	1"	2	1"		
2							L211	8/40	2	1"	2	1"	2	1"		
1							L212	8/40	2	1"	2	1"	2	1"		
1							L213	10/28	2	1"	2	1"	2	1"		
1							L214	10/28	2	1"	2	1"	2	1"		
1							L215	10/28	2	1"	2	1"	2	1"		
1							L216	10/28	2	1"	2	1"	2	1"		
4							L217	10/28	2	1"	2	1"	2	1"		
2							L218	10/28	2	1"	2	1"	2	1"		
2							L219	10/28	2	1"	2	1"	2	1"		
2							L220	10/28	2	1"	2	1"	2	1"		
2							L221	11/24	2	1"	2	1"	2	1"		
2							L222	11/24	2	1"	2	1"	2	1"		
2							L223	11/24	2	1"	2	1"	2	1"		
2							L224	10/40	3	1"	2	1"	2	1"		
1							L225	8/40	2	1"	2	1"	2	1"		
2							L226	8/40	2	1"	2	1"	2	1"		
2							L227	8/40	2	1"	2	1"	2	1"		
2							L228	8/40	2	1"	2	1"	2	1"		
1							L229	8/40	2	1"	2	1"	2	1"		
1							L230	8/40	3	1"	2	1"	2	1"		
SEE DETAILS SH. ST FOR VARIOUS																
2							L234	11/24	2	1"	2	1"	2	1"		
1							L235	11/24	3	1"	2	1"	2	1"		
2							L236	8/40	2	1"	2	1"	2	1"		
2							L237	8/40	2	1"	2	1"	2	1"		

NO. OF BEAMS							REINFORCING PER SPANDREL BEAM														
SEVENTH	SIXTH	FIFTH	FOURTH	THIRD	SECOND	FIRST	BEAM MARK	W/D	STRAIGHT	HOOKE	REMARKS	CONTINUOUS BARS IN TOP	ADDITIONAL TOP BARS OVER SUPPORTS	STIRRUPS							
NO.	SIZE	NO.	SIZE	NO.	SIZE	NO.	NO.	NO.	NO.	NO.	NO.	NO.	NO.	NO.							
2							L238	8/32	2	3/4"		2	5/8"	COL 106B	1	1/4"	COL 106B	13	5/8"	3, 4, 5, 6, 8, 9, 10, 11, 12, 13, 14, 15, 16, 17, 18, 19, 20, 21, 22, 23, 24, 25, 26, 27, 28, 29, 30, 31, 32, 33, 34, 35, 36, 37, 38, 39, 40, 41, 42, 43, 44, 45, 46, 47, 48, 49, 50, 51, 52, 53, 54, 55, 56, 57, 58, 59, 60, 61, 62, 63, 64, 65, 66, 67, 68, 69, 70, 71, 72, 73, 74, 75, 76, 77, 78, 79, 80, 81, 82, 83, 84, 85, 86, 87, 88, 89, 90, 91, 92, 93, 94, 95, 96, 97, 98, 99, 100	
2							L239	8/32	2	3/4"		2	5/8"	COL 25B	1	1/4"	COL 25B	11	5/8"	3, 4, 5, 6, 8, 9, 10, 11, 12, 13, 14, 15, 16, 17, 18, 19, 20, 21, 22, 23, 24, 25, 26, 27, 28, 29, 30, 31, 32, 33, 34, 35, 36, 37, 38, 39, 40, 41, 42, 43, 44, 45, 46, 47, 48, 49, 50, 51, 52, 53, 54, 55, 56, 57, 58, 59, 60, 61, 62, 63, 64, 65, 66, 67, 68, 69, 70, 71, 72, 73, 74, 75, 76, 77, 78, 79, 80, 81, 82, 83, 84, 85, 86, 87, 88, 89, 90, 91, 92, 93, 94, 95, 96, 97, 98, 99, 100	
2							L240	8/32			⊕	2	5/8"	COL 26	1	1/4"	COL 26	19	5/8"	3, 4, 5, 6, 8, 9, 10, 11, 12, 13, 14, 15, 16, 17, 18, 19, 20, 21, 22, 23, 24, 25, 26, 27, 28, 29, 30, 31, 32, 33, 34, 35, 36, 37, 38, 39, 40, 41, 42, 43, 44, 45, 46, 47, 48, 49, 50, 51, 52, 53, 54, 55, 56, 57, 58, 59, 60, 61, 62, 63, 64, 65, 66, 67, 68, 69, 70, 71, 72, 73, 74, 75, 76, 77, 78, 79, 80, 81, 82, 83, 84, 85, 86, 87, 88, 89, 90, 91, 92, 93, 94, 95, 96, 97, 98, 99, 100	
2							L241	8/32		2	1"	⊕	2	5/8"	COL 200	1	7/8"	COL 200	26	5/8"	2, 4, 5, 6, 8, 9, 10, 11, 12, 13, 14, 15, 16, 17, 18, 19, 20, 21, 22, 23, 24, 25, 26, 27, 28, 29, 30, 31, 32, 33, 34, 35, 36, 37, 38, 39, 40, 41, 42, 43, 44, 45, 46, 47, 48, 49, 50, 51, 52, 53, 54, 55, 56, 57, 58, 59, 60, 61, 62, 63, 64, 65, 66, 67, 68, 69, 70, 71, 72, 73, 74, 75, 76, 77, 78, 79, 80, 81, 82, 83, 84, 85, 86, 87, 88, 89, 90, 91, 92, 93, 94, 95, 96, 97, 98, 99, 100
1							L242	8/32	2	3/4"		2	3/4"	COL 220, 235	1	1/4"	COL 220, 235	11	5/8"	2, 4, 5, 6, 8, 9, 10, 11, 12, 13, 14, 15, 16, 17, 18, 19, 20, 21, 22, 23, 24, 25, 26, 27, 28, 29, 30, 31, 32, 33, 34, 35, 36, 37, 38, 39, 40, 41, 42, 43, 44, 45, 46, 47, 48, 49, 50, 51, 52, 53, 54, 55, 56, 57, 58, 59, 60, 61, 62, 63, 64, 65, 66, 67, 68, 69, 70, 71, 72, 73, 74, 75, 76, 77, 78, 79, 80, 81, 82, 83, 84, 85, 86, 87, 88, 89, 90, 91, 92, 93, 94, 95, 96, 97, 98, 99, 100	
									</												

NO. OF BEAMS							REINFORCING PER SPANDREL BEAM													
SEVENTH	SIXTH	FIFTH	FOURTH	THIRD	SECOND	FIRST	BEAM MARK	W/D	STRAIGHT NO.	HOOKE NO.	REMARKS	CONTINUOUS BARS IN TOP NO.	SITE REMARKS	ADDITIONAL TOP BARS OVER SUPPORTS NO.	SIZE	15'6" REMARKS	STIRRUPS NO.	SIZE	STIRRUP SPACING EACH END	
							L341	10/32	2	1#	CENTERED	2	1#	S.A. 60 L340 & L342	2	1#	15'6" COVERED	12	3/8"	2' 4", 5', 2' 11"
							L342	10/32	2	1#	1" 15'6" ⊕ COL. 211	2	1#	⊕ COL. 211	2	1#	5'6" COL. 211	33	3/8"	2', 6' 4", 8' 6", 10', 2' 12"
							L343	10/32	2	1#	⊕	2	1#	⊕ COL. 211	1	1#	COL. 212	17	3/8"	3' 4", 3', BAL. @ 12"
							L344	10/32	2	1#		2	1#	⊕ COL. 213	1	1#	COL. 213	21	3/8"	3' 4", 3', BAL. @ 12"
							L345	10/32	2	1#		2	1#	⊕ COL. 214	1	1#	COL. 214	23	3/8"	3' 4", 3', BAL. @ 12"
							L346	10/32	2	1#	⊕	2	1#	⊕ COL. 215	1	1#	COL. 215	19	3/8"	3' 4", 3', BAL. @ 12"
							L347	10/32	2	1#		2	1#	⊕ COL. 216	1	1#	COL. 216	16	3/8"	3' 4", 3', BAL. @ 12"
							L348	10/32	2	1#		2	1#	⊕ COL. 217	1	1#	COL. 217	23	3/8"	2' 3" 5", 7', BAL. @ 12"
							L349	10/32	2	1#		2	1#	⊕ COL. 218	1	1#	COL. 218	24	3/8"	3' 3" 6", 7', @ 12"
							L350	10/32	2	1#	⊕	2	1#	⊕ COL. 219	1	1#	COL. 219	21	3/8"	3' 4", 3', BAL. @ 12"
							L351	10/32	3	1#	1" 2" 15'6" 2" 15'6"	2	1#	⊕ COL. 219				21	3/8"	3' 4", 3', BAL. @ 12"
							L352	10/32				2	1#	COL. 200 BARS LAP & L381	1	1#	COL. 219	11	3/8"	3' 4", 3', BAL. @ 12"
								</												

No. of Beams				REINFORCING PER SPANDREL BEAM																	
Beam No.	Span Length	Slope	Elevation	BOTTOM BARS				CONTINUOUS BARS IN TOP				ADDITIONAL TOP BARS OVER SUPPORTS				STIRRUPS					
				STRAIGHT		HOOKED		NO. SIZE		NO. SIZE		REMARKS		NO. SIZE		REMARKS		NO. SIZE		REMARKS	
				NO.	SIZE	NO.	SIZE	NO.	SIZE	NO.	SIZE	NO.	SIZE	NO.	SIZE	NO.	SIZE	NO.	SIZE	NO.	SIZE
L390	10/43			3	1#	3	1#	3	1#	3	1#	3	1#	3	1#	3	1#	3	1#	3	1#
L391	10/43			3	1#	3	1#	3	1#	3	1#	3	1#	3	1#	3	1#	3	1#	3	1#
L392	10/43			3	1#	3	1#	3	1#	3	1#	3	1#	3	1#	3	1#	3	1#	3	1#
L393	10/43			3	1#	3	1#	3	1#	3	1#	3	1#	3	1#	3	1#	3	1#	3	1#
L394	10/43			3	1#	3	1#	3	1#	3	1#	3	1#	3	1#	3	1#	3	1#	3	1#
L395	10/43			3	1#	3	1#	3	1#	3	1#	3	1#	3	1#	3	1#	3	1#	3	1#
L396	10/43			3	1#	3	1#	3	1#	3	1#	3	1#	3	1#	3	1#	3	1#	3	1#
L397	10/43			3	1#	3	1#	3	1#	3	1#	3	1#	3	1#	3	1#	3	1#	3	1#
L398	10/43			3	1#	3	1#	3	1#	3	1#	3	1#	3	1#	3	1#	3	1#	3	1#
L399	10/43			3	1#	3	1#	3	1#	3	1#	3	1#	3	1#	3	1#	3	1#	3	1#
L400	10/43			3	1#	3	1#	3	1#	3	1#	3	1#	3	1#	3	1#	3	1#	3	1#
L401	10/43			3	1#	3	1#	3	1#	3	1#	3	1#	3	1#	3	1#	3	1#	3	1#
L402	10/43			3	1#	3	1#	3	1#	3	1#	3	1#	3	1#	3	1#	3	1#	3	1#
L403	10/43			3	1#	3	1#	3	1#	3	1#	3	1#	3	1#	3	1#	3	1#	3	1#
L404	10/43			3	1#	3	1#	3	1#	3	1#	3	1#	3	1#	3	1#	3	1#	3	1#
L405	10/43			3	1#	3	1#	3	1#	3	1#	3	1#	3	1#	3	1#	3	1#	3	1#
L406	10/43			3	1#	3	1#	3	1#	3	1#	3	1#	3	1#	3	1#	3	1#	3	1#
L407	10/43			3	1#	3	1#	3	1#	3	1#	3	1#	3	1#	3	1#	3	1#	3	1#
L408	10/43			3	1#	3	1#	3	1#	3	1#	3	1#	3	1#	3	1#	3	1#	3	1#
L409	10/43			3	1#	3	1#	3	1#	3	1#	3	1#	3	1#	3	1#	3	1#	3	1#
L410	10/43			3	1#	3	1#	3	1#	3	1#	3	1#	3	1#	3	1#	3	1#	3	1#
L411	10/43			3	1#	3	1#	3													

MARK	TYPE RIB	SIZE	TAPER ENDS	REINFORCEMENT		PER RIB		BENDING
				BOTTOM REINF.		TOP REINF.		
				NO. OF STR.	DENT	NO.	SIZE LENGTH	
J1	STANDARD D&L PART	5 x 10 1/2 8 1/4 x 10 1/2	T-1-E No-T	1-5/8" HK 1-5/8" HK	1-3/8" 1-3/8"			DETAIL I DETAIL III
J2	STANDARD D&L PART	5 x 10 1/2 8 1/4 x 10 1/2	T-1-E No-T	1-5/8" HK 1-3/8" HK	1-3/8" 1-5/8"			DETAIL II Do
J3	STANDARD D&L PART	5 x 10 1/2 8 1/4 x 10 1/2	T-1-E No-T	1-3/8" HK 1-3/8" HK	1-3/8" 1-3/8"			DETAIL III Do
J4	STANDARD D&L PART	5 x 10 1/2 8 1/4 x 10 1/2	T-2-E No-T	1-5/8" HK 1-3/8" HK	1-3/8" 1-3/8"			DETAIL I DETAIL III
J5	STANDARD D&L PART	5 x 10 1/2 8 1/4 x 10 1/2	T-2-E No-T	1-3/8" HK 1-3/8" HK	1-3/8" 1-3/8"			DETAIL II Do
J6	STANDARD	5 x 10 1/2	T-1-E	1-3/8" HK	1-3/8"	1-3/8"-11'0"	CENTERED OVER BEAM	DETAIL II
J7	STANDARD	5 x 10 1/2	T-1-E	1-3/8" HK	1-3/8"	1-3/8"-11'0"	CENTER'D OVER BEAM	DETAIL II
J8	STANDARD	5 x 8 1/2	T-1-E	1-3/8" HK	1-1/2"			DETAIL I
J9	STANDARD	5 x 12 1/2	T-1-E	1-3/8" HK	1-3/8"	*LAP 40D PAST BM INTO ADJ. RIB	1-3/8"-11'0"	CENTER'D OVER BEAM
J10	STANDARD	5 x 12 1/2	No-T	1-5/8" S	1-3/8"			TYPICAL - SEE DETAIL ON SH. 517
J11	STANDARD	5 x 12 1/2	T-1-E	1-3/8" HK	1-3/8"	1-3/8"-11'0"	CENTER'D OVER BEAM	TYPICAL - SEE DETAIL ON SH. 517
J12	STANDARD	8 x 12 1/2	No-T	1-1/2" S	1-1/2"			TYPICAL - SEE DETAIL ON SH. 517
J13	STANDARD	5 x 12 1/2	T-1-E	1-1/2" HK	1-5/8"	1-1/2"-11'0"	CENTERED OVER BEAM	TYPICAL - SEE DETAIL ON SH. 517
J14	STANDARD D&L PART	5 x 12 1/2 8 1/4 x 12 1/2	T-1-E No-T	1-3/8" HK 1-3/8" HK	1-3/8" 1-3/8"			DETAIL I DETAIL III
J15	STANDARD D&L PART	5 x 12 1/2 8 1/4 x 12 1/2	T-1-E No-T	1-3/8" HK 1-1/2" HK	1-3/8" 1-3/8"			DETAIL II Do
J16	STANDARD	5 x 12 1/2	T-1-E	1-3/8" HK	1-3/8"			TYPICAL - SEE DETAIL ON SH. 517
J17	STANDARD	5 x 12 1/2	No-T	1-3/8" HK	1-3/8"			TYPICAL - SEE DETAIL ON SH. 517
J18	STANDARD	5 x 10 1/2	T-2-E	1-3/8"	1-3/8"	1-3/8"-33'0"		TYPICAL - SEE DETAIL ON SH. 517
J19	STANDARD	5 x 12 1/2	T-1-E	1-3/8"	1-3/8"			TYPICAL - SEE DETAIL ON SH. 517
J20	STANDARD D&L PART	5 x 12 1/2 8 1/4 x 12 1/2	T-1-E No-T	1-3/8" HK 1-1/2" HK	1-3/8" 1-3/8"			DETAIL II Do
J21	STANDARD D&L PART	5 x 12 1/2 8 1/4 x 12 1/2	T-1-E No-T	1-1/2" HK 1-1/2" HK	1-3/8" 1-1/2"			DETAIL III Do
J22	STANDARD D&L PART	5 x 12 1/2 8 1/4 x 12 1/2	T-1-E No-T	1-1/2" HK 1-1/2" HK	1-3/8" 1-1/2"			DETAIL II Do
J23	STANDARD D&L PART	5 x 12 1/2 8 1/4 x 12 1/2	T-2-E No-T	1-1/2" HK 1-1/2" HK	1-1/2" 1-1/2"			DETAIL I DETAIL III
J24	STANDARD D&L PART	5 x 12 1/2 8 1/4 x 12 1/2	T-1-E No-T	1-3/8" HK 1-1/2" HK	1-3/8" 1-3/8"			DETAIL II Do
J25	STANDARD D&L PART	5 x 12 1/2 8 1/4 x 12 1/2	T-1-E No-T	1-3/8" HK 1-3/8" HK	1-3/8" 1-3/8"			DETAIL I DETAIL III
J26	STANDARD	5 x 10 1/2	No-T	1-3/8" HK	1-3/8"			DETAIL I
J27	STANDARD D&L PART	5 x 12 1/2 5 x 12 1/2	T-1-E No-T	1-3/8" 1-1/2"	1-3/8" 1-3/8"			DETAIL III Do
J28	STANDARD D&L PART	5 x 12 1/2 8 1/4 x 12 1/2	T-1-E No-T	1-3/8" HK 1-3/8" HK	1-1/2" 1-1/2"			DETAIL I DETAIL IV
J29	STANDARD D&L PART	5 x 10 1/2 8 1/4 x 10 1/2	T-1-E No-T	1-3/8" HK 1-3/8" HK	1-3/8" 1-3/8"			DETAIL I DETAIL III
J30	STANDARD	5 x 10 1/2	T-1-E	1-3/8" HK	1-3/8"	1-3/8"-14'0"	CENTER'D ON BEAM	DETAIL IV
J31	STANDARD	5 x 14 1/2	T-1-E	1-3/8" HK	1-3/8"			DETAIL V
J32	STANDARD	5 x 10 1/2	T-1-E	1-3/8" HK	1-3/8"			DETAIL I
J33	STANDARD	5 x 10 1/2	T-1-E	1-3/8" HK	1-3/8"			DETAIL I
J34	STANDARD	5 x 10 1/2	No-T					



THIS DRAWING FORMS A PART OF CONTRACT NO. W-33-63-8-20
and 534 MODIFICATION NO. 1 DATED 1 JULY 43

7-2-48	CORRECTIONS & CLARIFICATIONS	R 2 W
7-14-48	CORRECTIONS & CLARIFICATIONS	R 2 W
REVISIONS	DATE	DESCRIPTION
P. M. O'MEARA ASSOCIATES G. J. MAGUOLLO G. E. QUICK ARCHITECTS - ENGINEERS ST. LOUIS, MO.		WAR DEPARTMENT CORPS OF ENGINEERS ST. LOUIS DISTRICT ST. LOUIS, MO.
DRAWN BY	VETERANS ADMINISTRATION HOSPITAL	
TRACED BY	POPULAR BLUFF MO.	
CHECKED BY	200 BED G.H.	
SUBMITTED	SPANDREL BEAM & RIB SCHEDULE	
APPROVED	APPROVED	DATE
<i>[Signature]</i> HEAD ENGINEER	<i>[Signature]</i> COL. C. E. MERTHA - ENGINEER	20 OCT. 1947
SCALE		DRAWING NUMBER
V. A. PROJECT NO. 2899		32-01-526