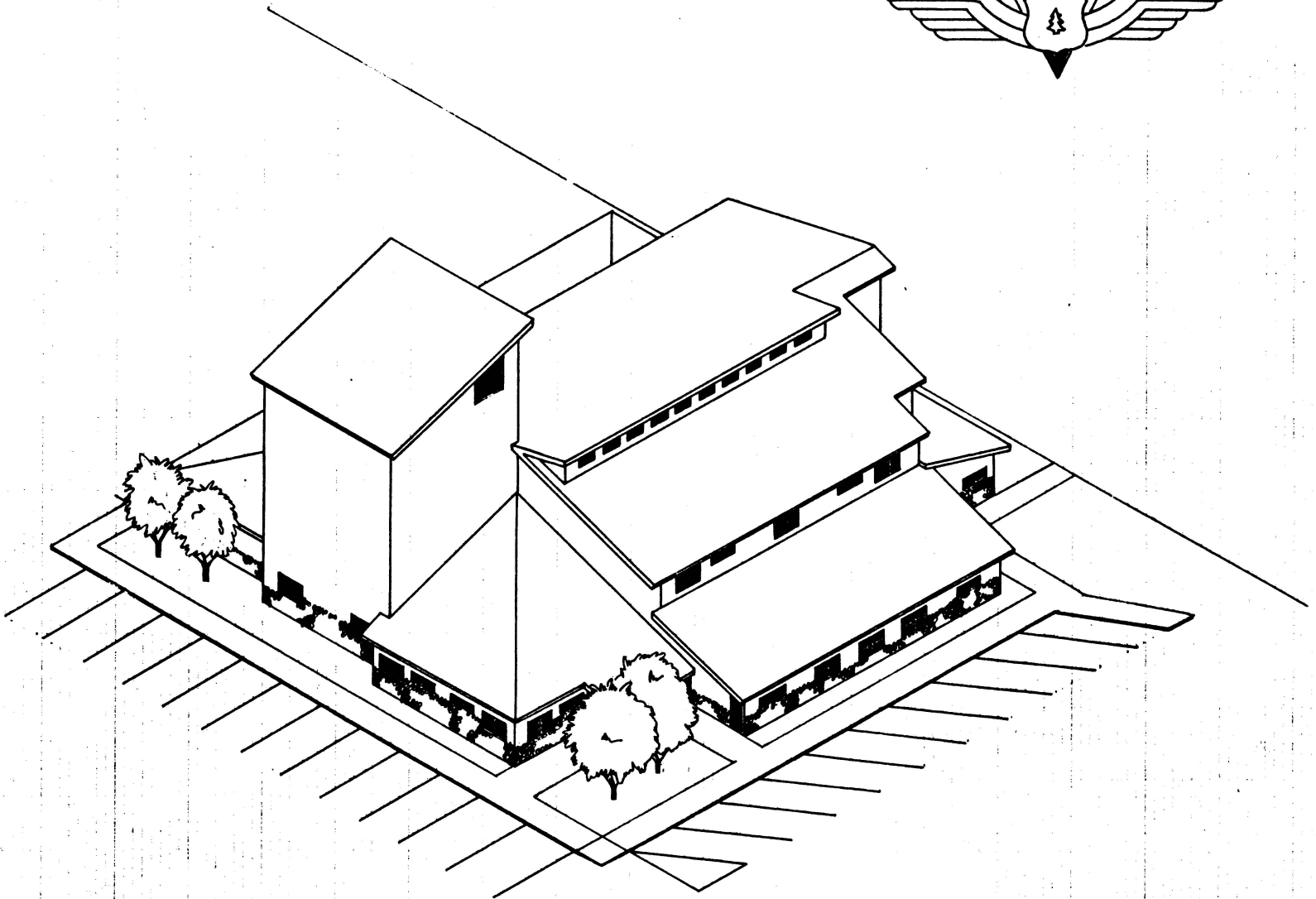
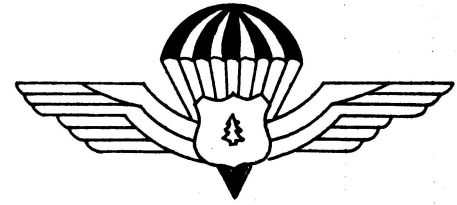


# MCCALL SMOKEJUMPER BASE







Administrative building and tower

Pilot Offices/Showers

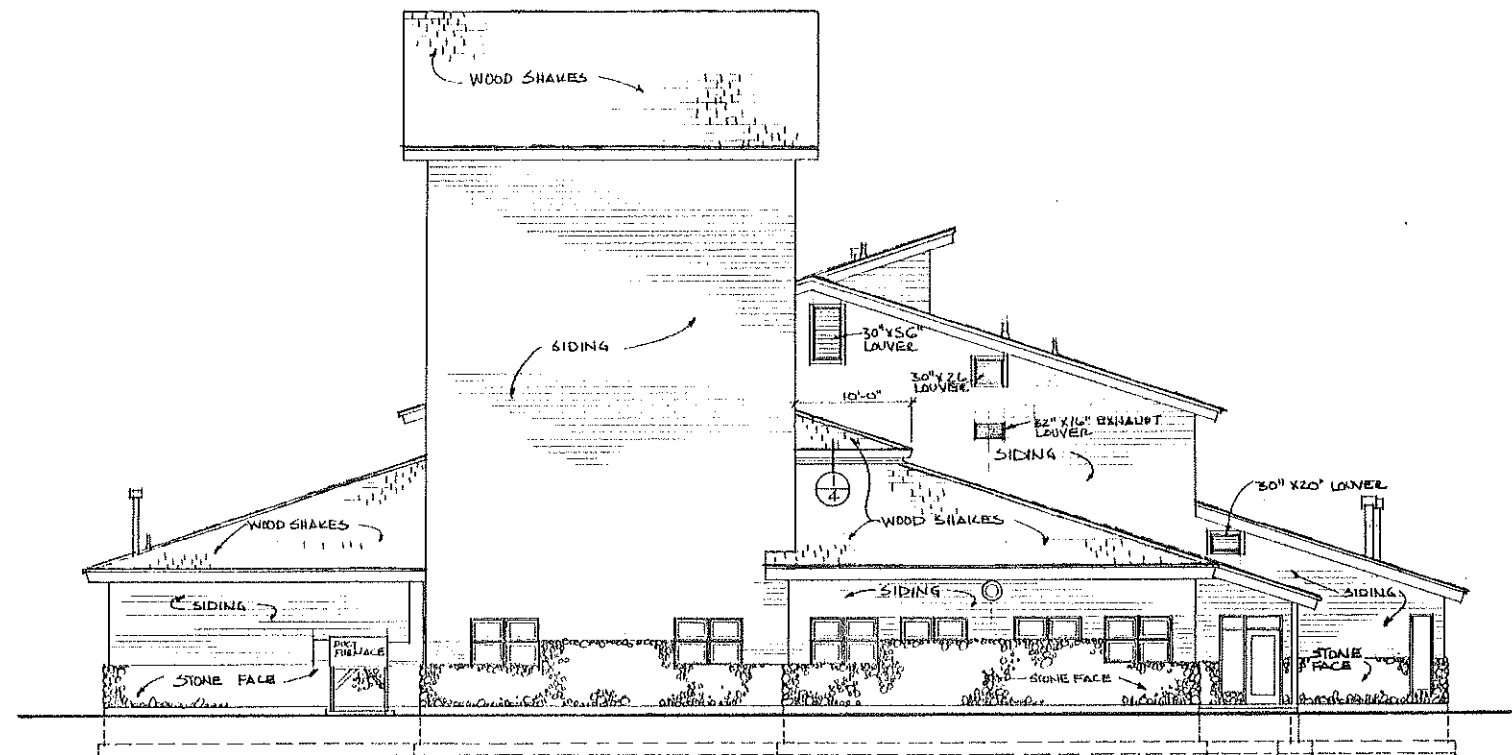
Bike Storage

Motor Sheds

Weight Rm

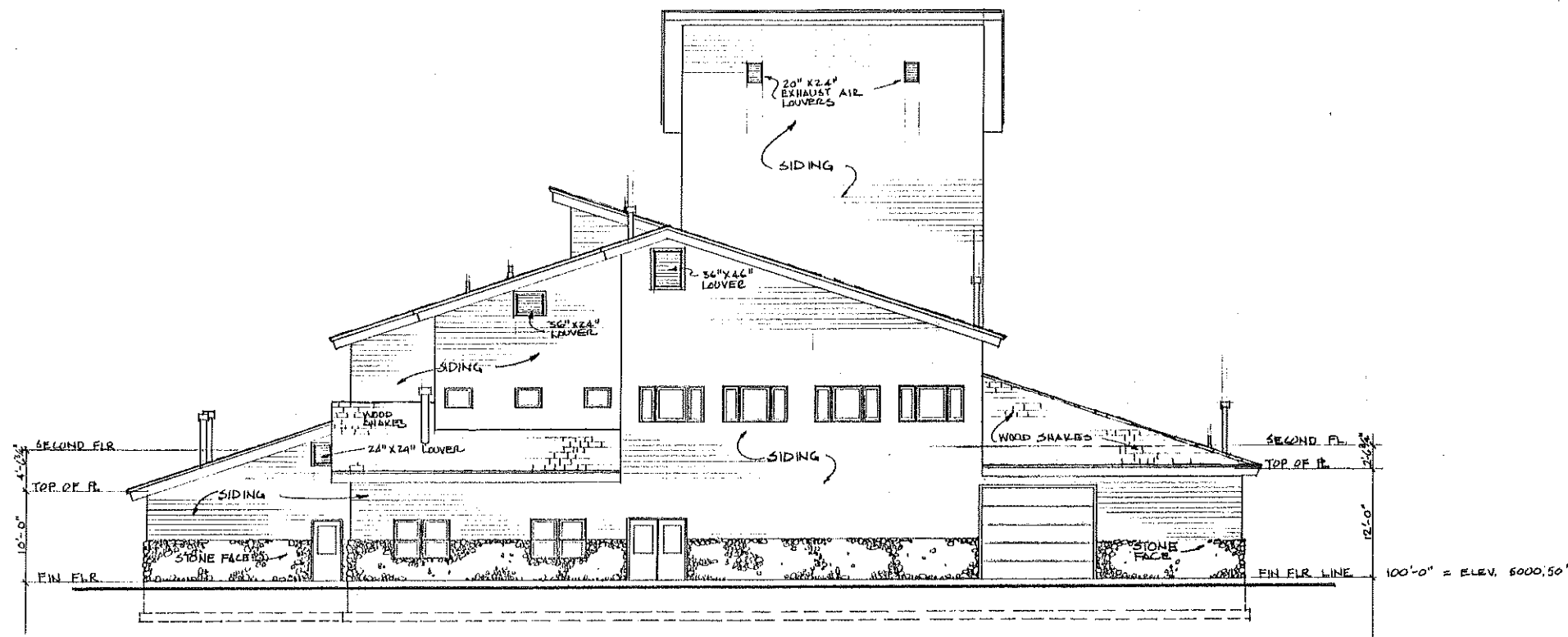
Google





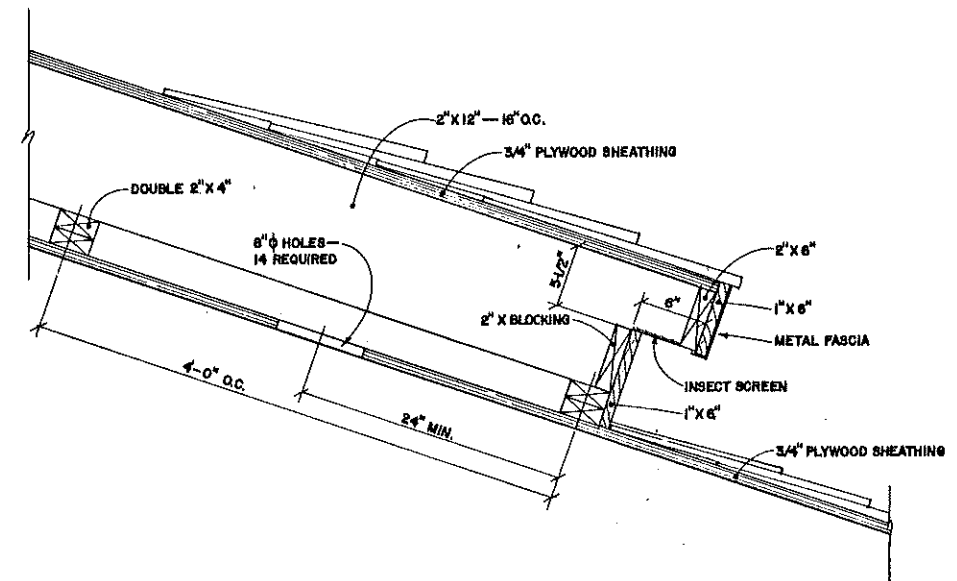
**WEST ELEVATION**

SCALE 1/8" = 1'-0"



**EAST ELEVATION**

SCALE 1/8" = 1'-0"

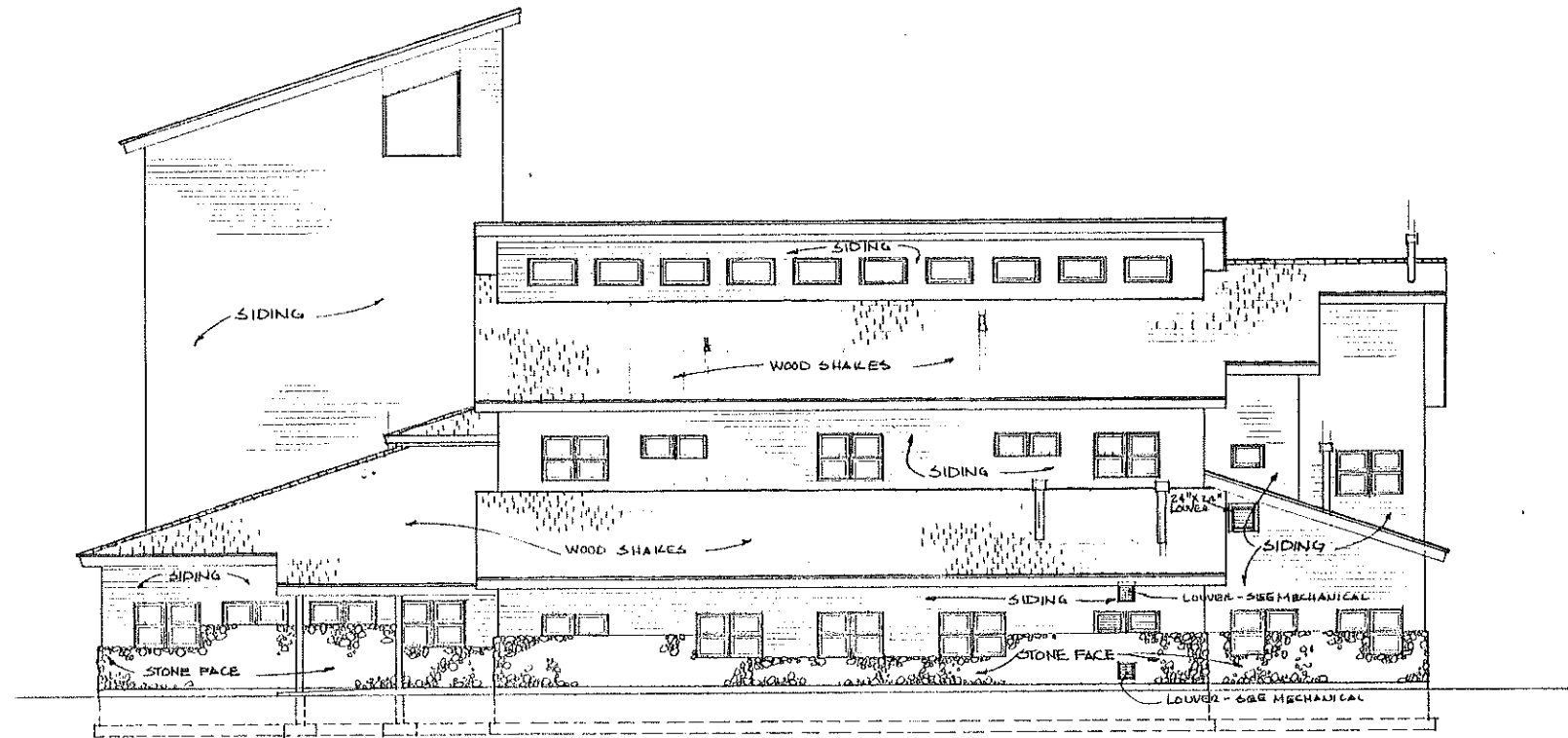


**VENTING DETAIL**

1-1/2" = 1'-0"

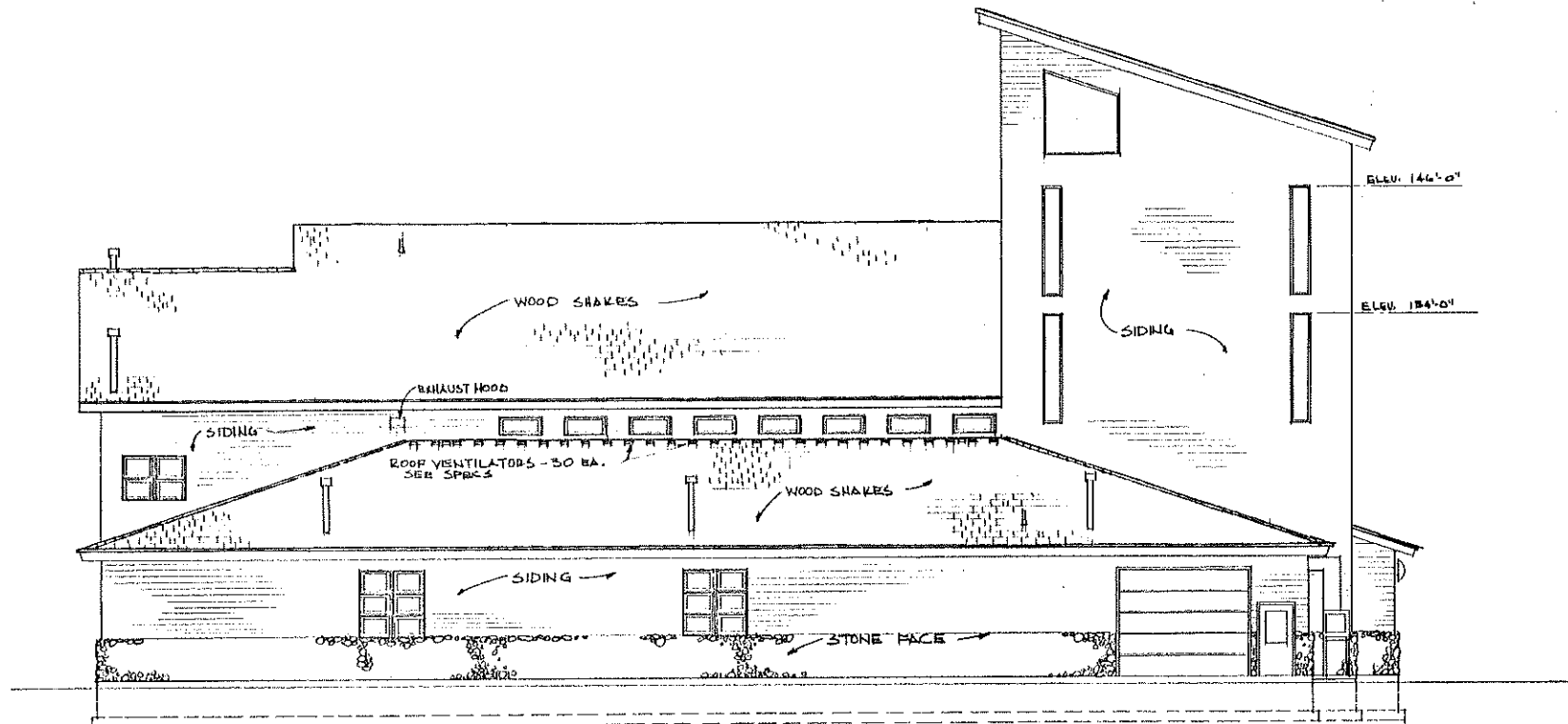


U.S. Department of Agriculture FOREST SERVICE		<b>McCALL SMOKEJUMPER BASE</b>	
Region 4	Engineering	PAYETTE NATIONAL FOREST McCALL, IDAHO	
DESIGN	BY B. CROCKETT CHECK W. MOFFETT	<b>PARALOFT BUILDING ELEVATIONS</b>	
DRAWN	BY B. CROCKETT CHECK W. MOFFETT		
APPROVED	<i>[Signature]</i> TITLE <i>Atty. Engr.</i> DATE 6/1/86	DRAWING NO. 270	4 of 31



**SOUTH ELEVATION**

SCALE 1/8" = 1'-0"

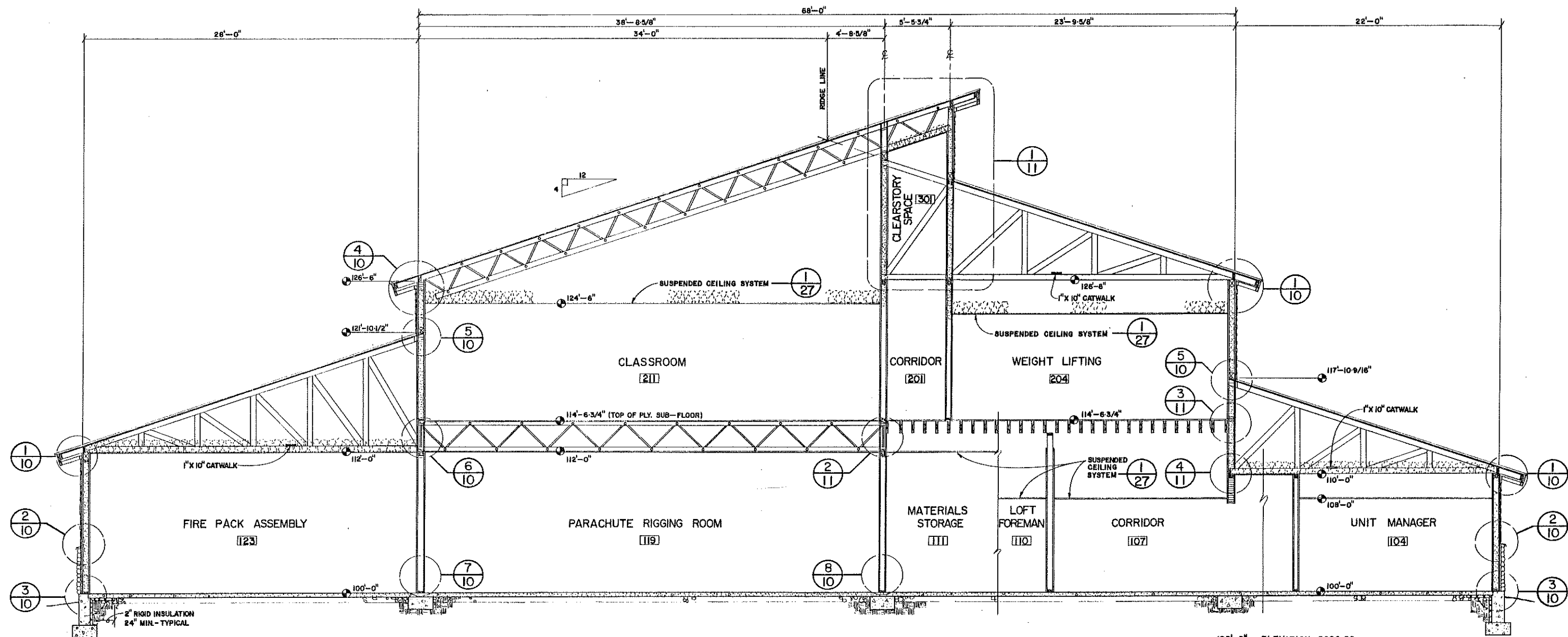


**NORTH ELEVATION**

SCALE 1/8" = 1'-0"



U.S. Department of Agriculture FOREST SERVICE		<b>McCALL SMOKEJUMPER BASE</b>	
Region 4	Engineering	PAYETTE NATIONAL FOREST	McCALL, IDAHO
DESIGN	BY B. CROCKETT CHECK W. MOFFETT	<b>PARALOFT BUILDING ELEVATIONS</b>	
DRAWN	BY B. CROCKETT CHECK W. MOFFETT		
APPROVED	<i>William C. Brown</i>	DRAWING NO. 270	5 : 31
TITLE	Act. Dir. Engr.	DATE 6/18/86	



NOTE: SEE STRUCTURAL DRAWINGS FOR TRUSS & FRAMING MEMBER SIZE, SPACING, CONNECTIONS ETC.

# BUILDING SECTION

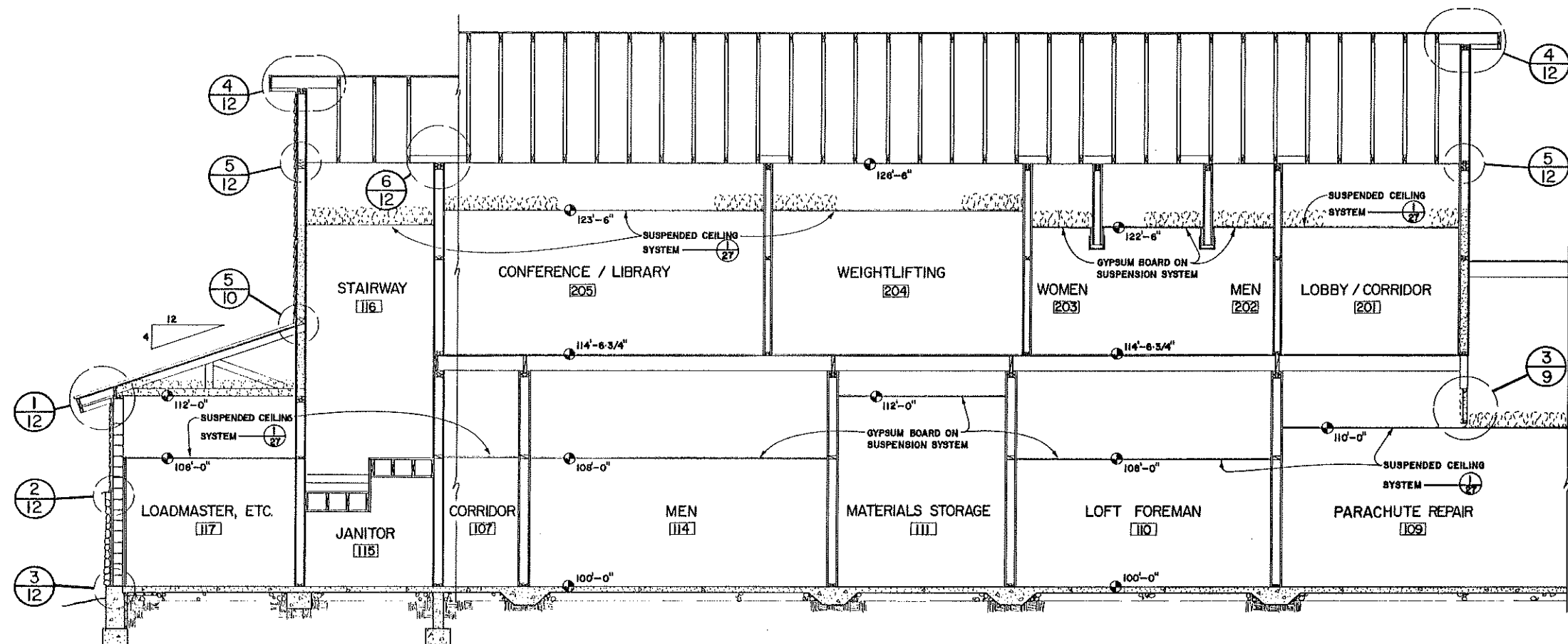
1/4" = 1'-0"



NOTE: INSULATION =  
WALLS - R-19  
CEILINGS - R-19  
UNDER FLOOR - SEE SPEC.

100'-0" = ELEVATION 5000.50

U.S. Department of Agriculture FOREST SERVICE		McCALL SMOKEJUMPER BASE	
Region 4		PAYETTE NATIONAL FOREST	
Engineering		McCALL, IDAHO	
DESIGN	BY B. L. ROCKETT / W. MOFFETT	PARALOFT BUILDING	
	CHECK W. MOFFETT	BUILDING SECTION	
DRAWN	BY G. W. GIBBONS	DRAWING NO.	270
	CHECK W. MOFFETT		6
APPROVED	BY [Signature]		31
TITLE	Act. Dir. [Signature]	DATE	6/1/82

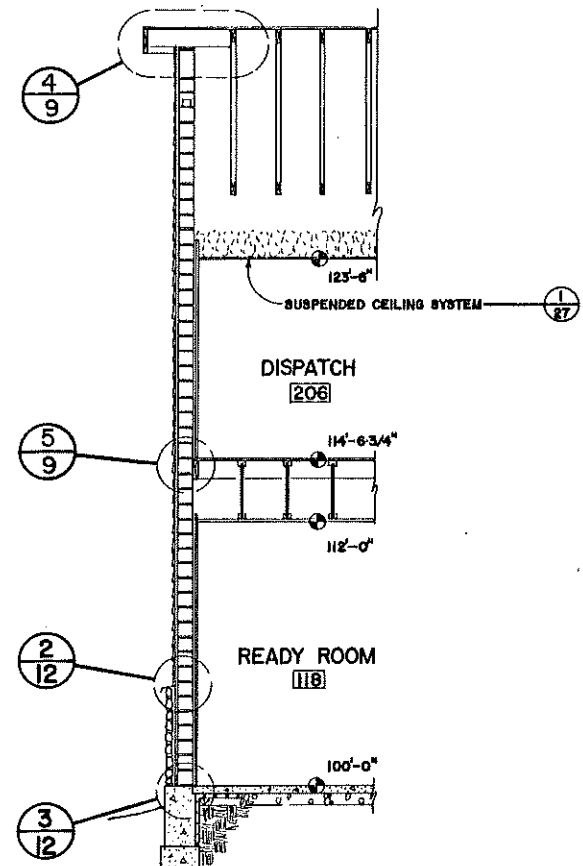


NOTE: SEE STRUCTURAL DRAWINGS FOR TRUSS & FRAMING  
MEMBER SIZE, SPACING, CONNECTIONS ETC.

NOTE: INSULATION =  
WALLS - R-19  
CEILINGS - R-19  
UNDER FLOOR - SEE SPEC.

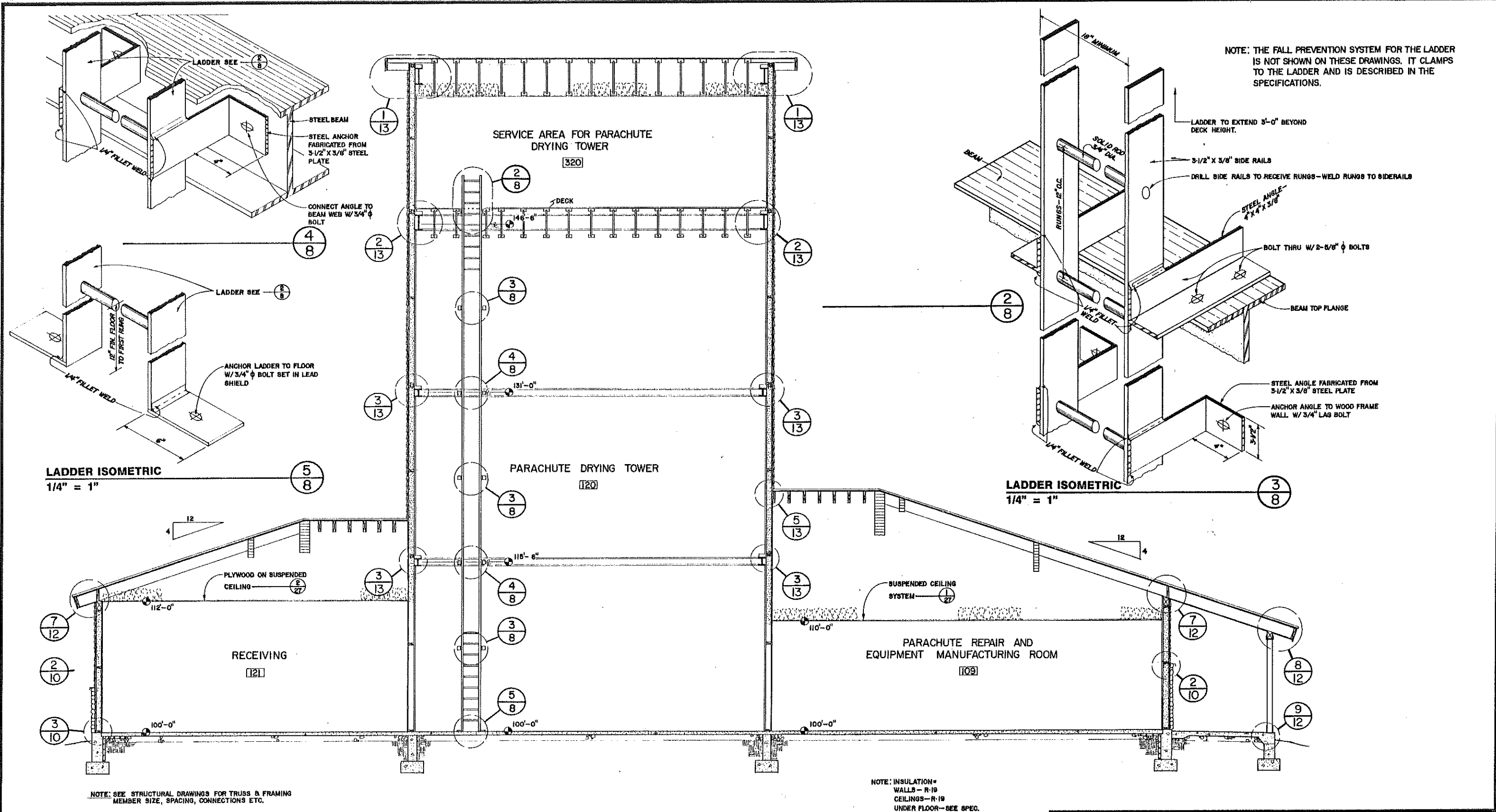
**BUILDING SECTION**

1/4" = 1'-0"



**WALL SECTION**  
1/4" = 1'-0"

U.S. Department of Agriculture FOREST SERVICE		<b>McCALL SMOKEJUMPER BASE</b>	
Region 4	Engineering	PAYETTE NATIONAL FOREST McCALL, IDAHO	
DESIGN	BY B. COCKETT / W. MOFFETT CHECK W. MOFFETT	<b>PARALOFT BUILDING BUILDING SECTION</b>	
DRAWN	BY GW GIBBONS CHECK W. MOFFETT		
APPROVED	<i>[Signature]</i> TITLE <i>Act. Dir. Engr.</i> DATE 6/14/86	DRAWING NO. 270	7 31



**BUILDING SECTION**

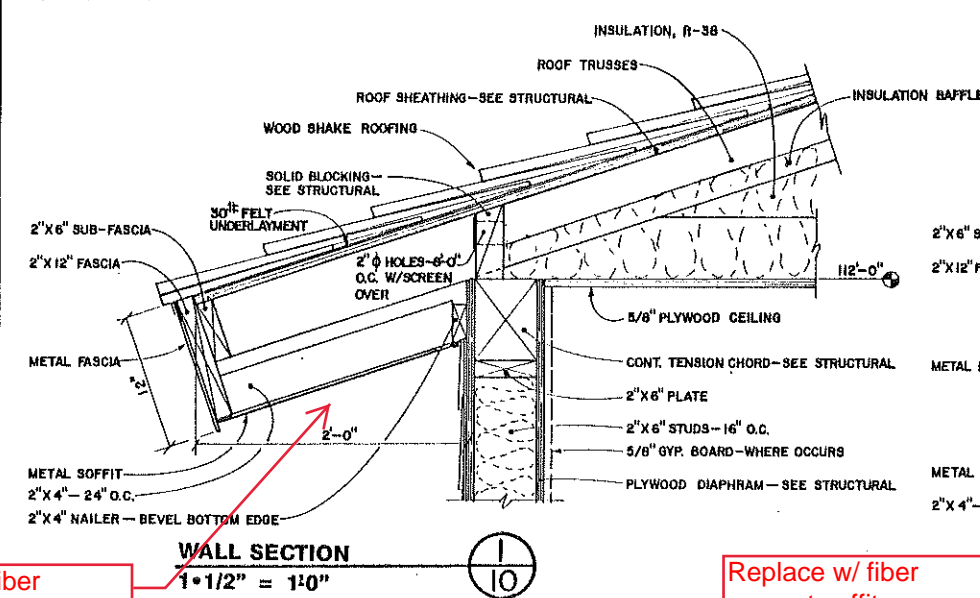
1/4" = 1'-0"



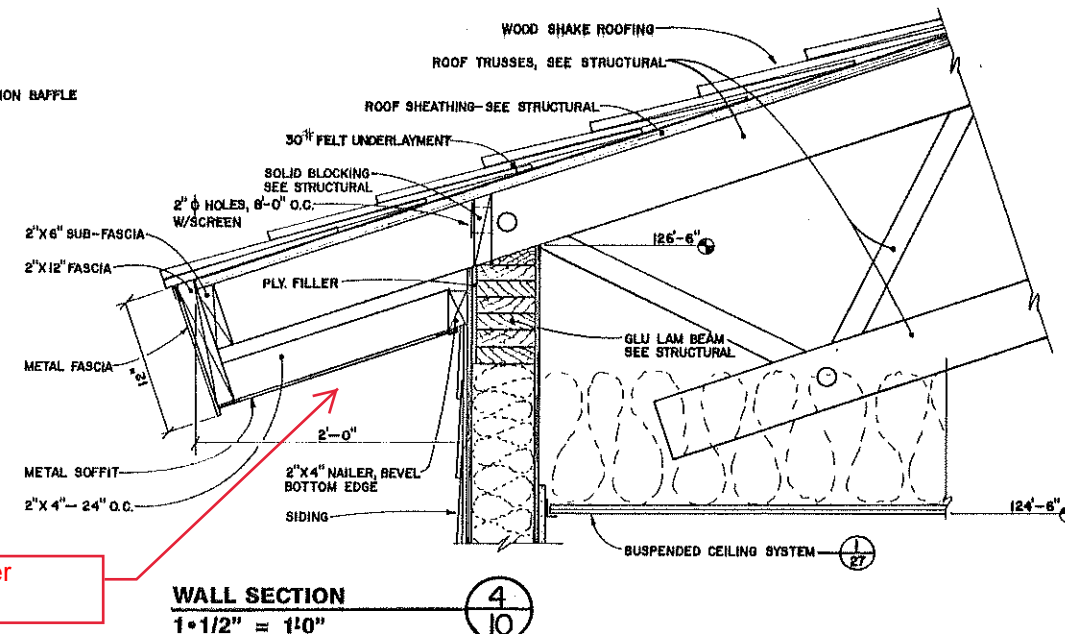
U.S. Department of Agriculture FOREST SERVICE		<b>McCALL SMOKEJUMPER BASE</b>	
Region 4	Engineering	PAYETTE NATIONAL FOREST	McCALL, IDAHO
DESIGN	BY W. MOFFETT CHECK B. CROCKETT	<b>PARALOFT BUILDING BUILDING SECTION</b>	
DRAWN	BY G.W. GIBBONS CHECK W. MOFFETT	DRAWING NO.	270
APPROVED	By <i>[Signature]</i>	8	31
TITLE	At Dir. Engr.	DATE	6/18/86



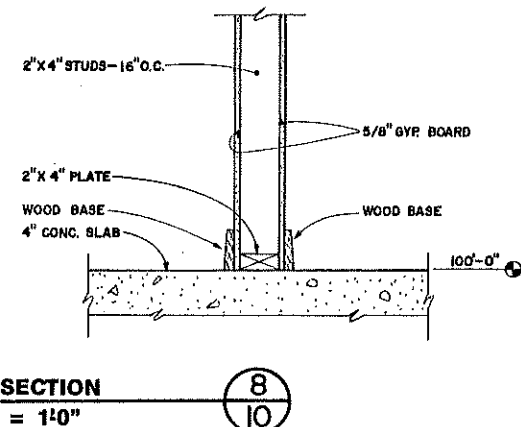
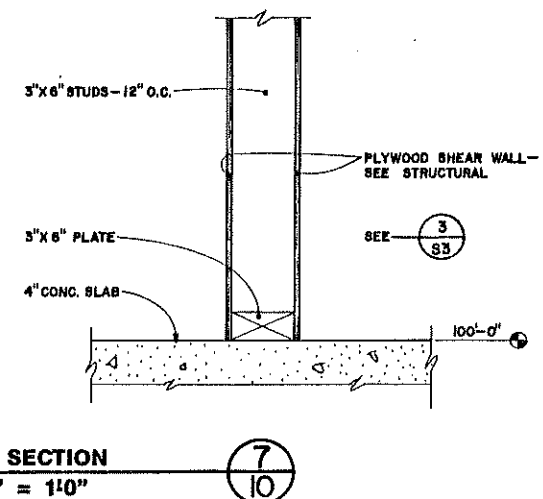
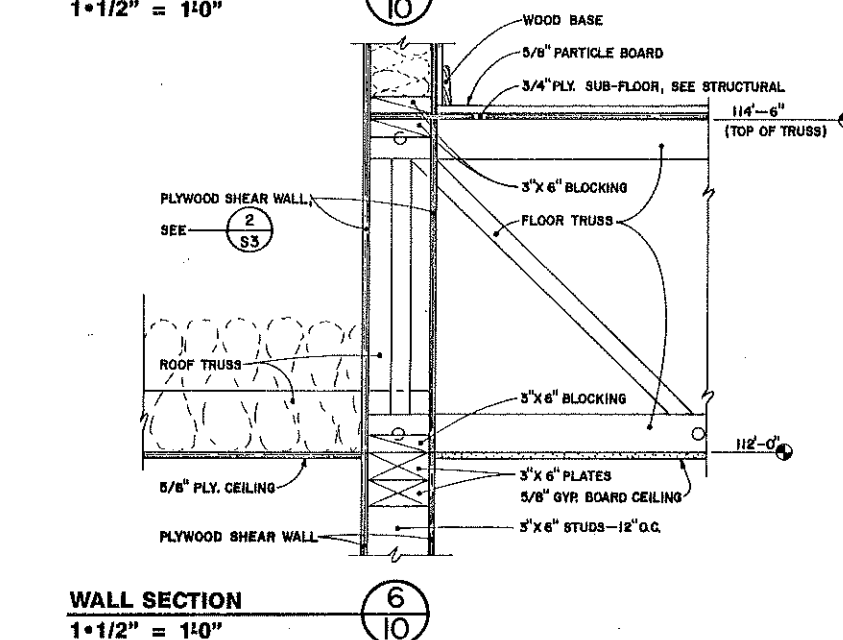
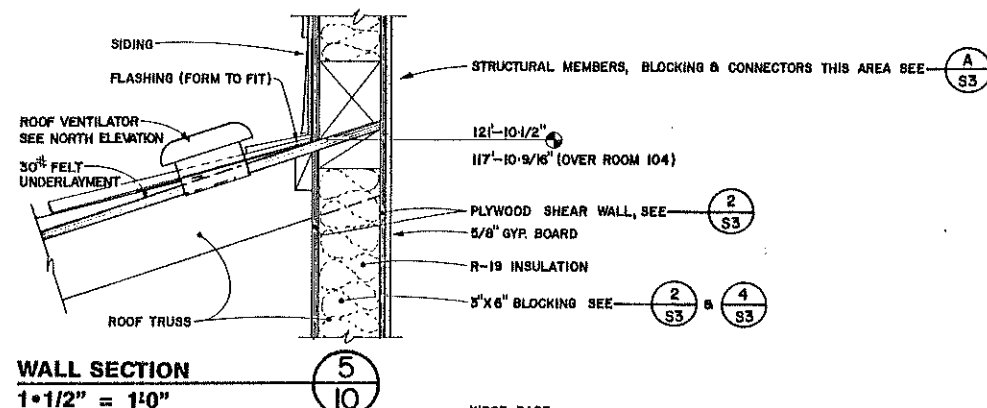
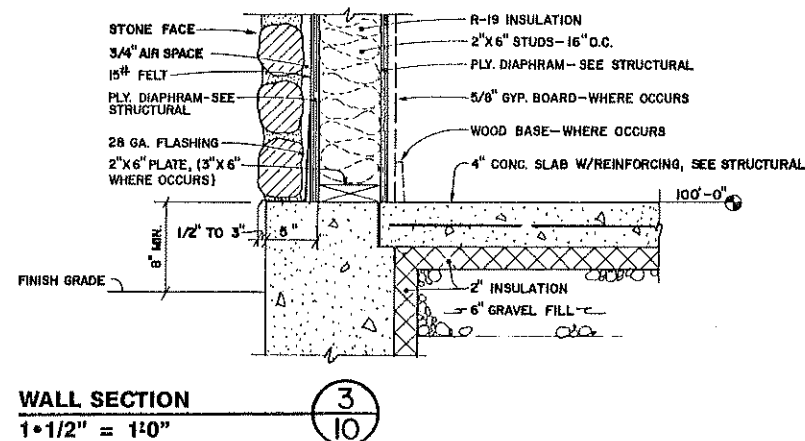
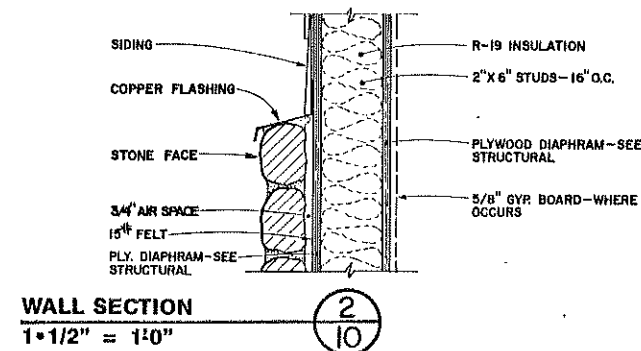




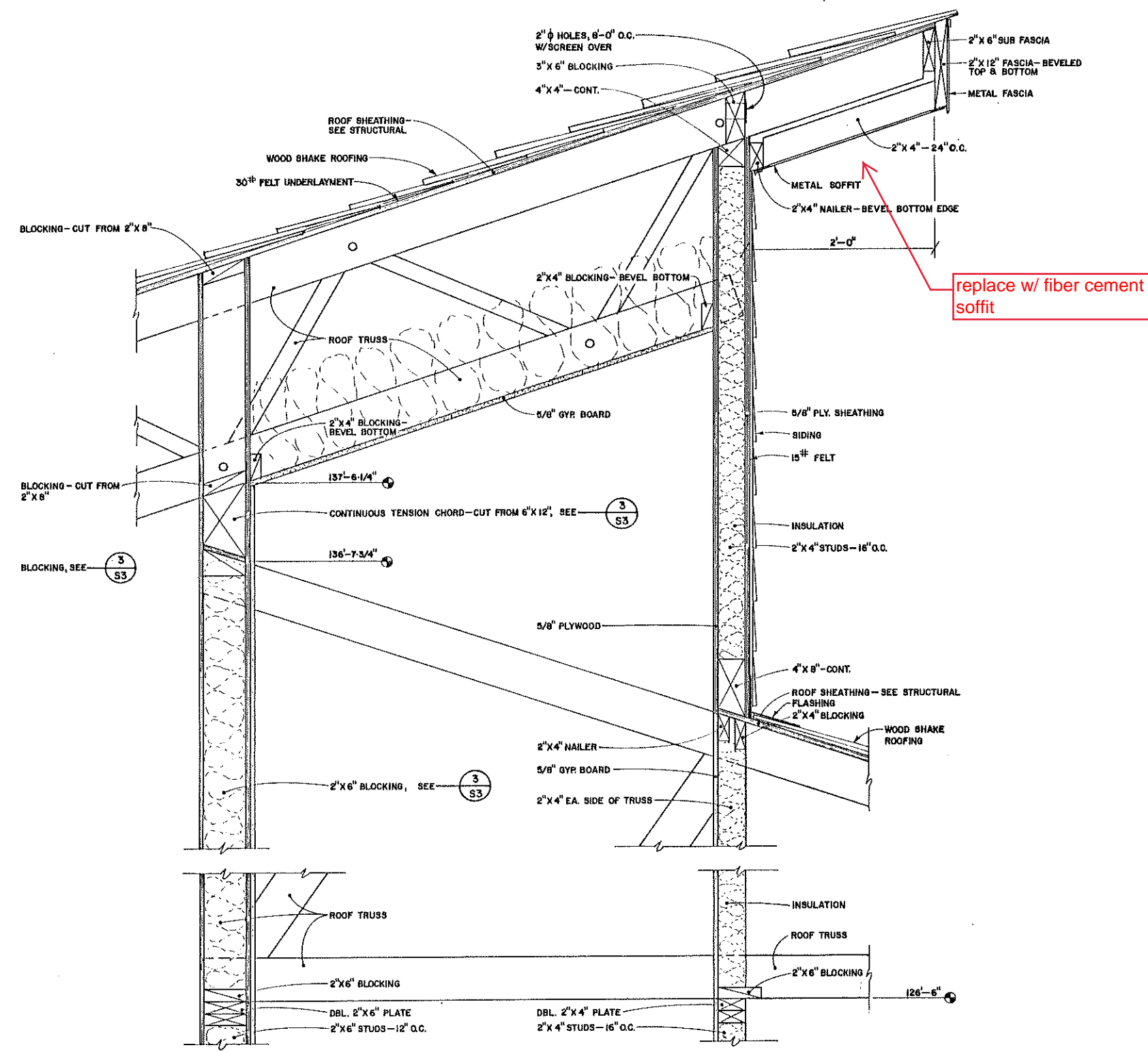
Replace w/ fiber  
cement soffit



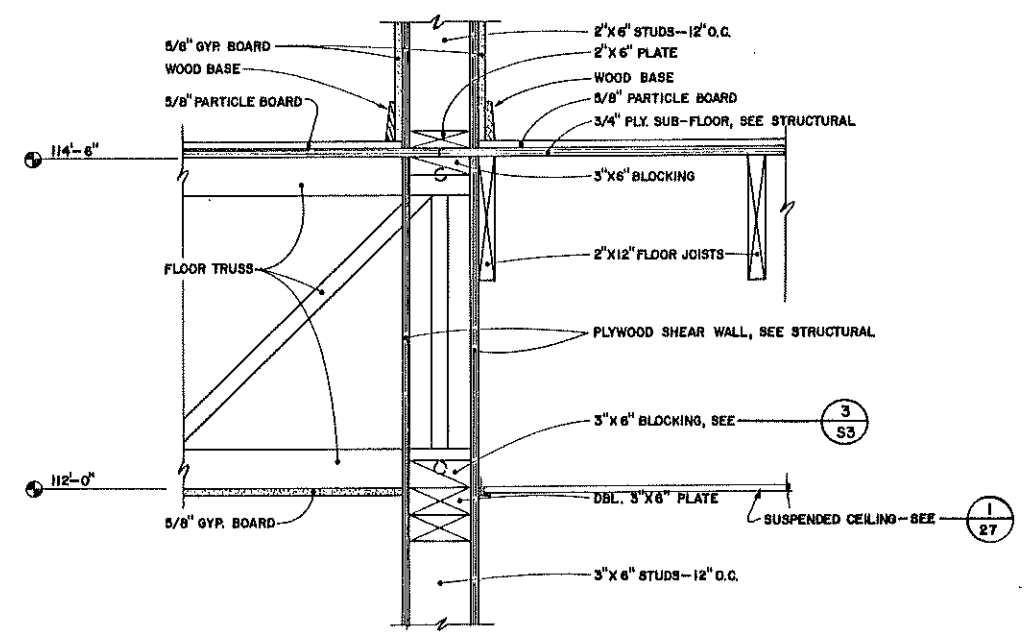
Replace w/ fiber  
cement soffit



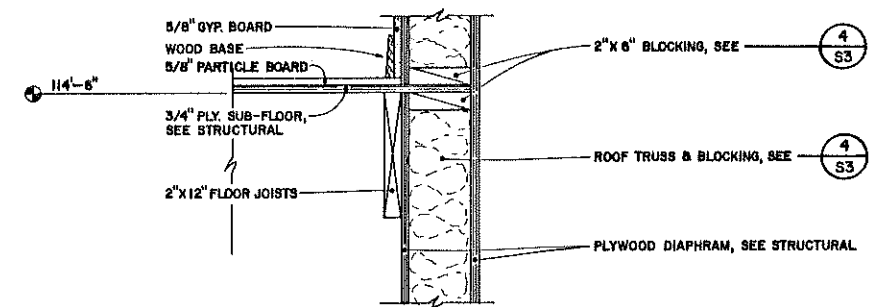
U.S. Department of Agriculture FOREST SERVICE		McCALL SMOKEJUMPER BASE	
Region 4		Engineering	
DESIGN	BY W. MOFFETT CHECK B. CROCKETT	PAYETTE NATIONAL FOREST	
DRAWN	BY G.W. GIBBONS CHECK W. MOFFETT	McCALL, IDAHO	
APPROVED <i>Esther L. Kavan</i>		PARALOFT BUILDING	
TITLE <i>Alt. Ditch Erosion</i>		WALL SECTIONS & DETAILS	
DATE <i>6/18/66</i>		DRAWING NO. 270	10 31



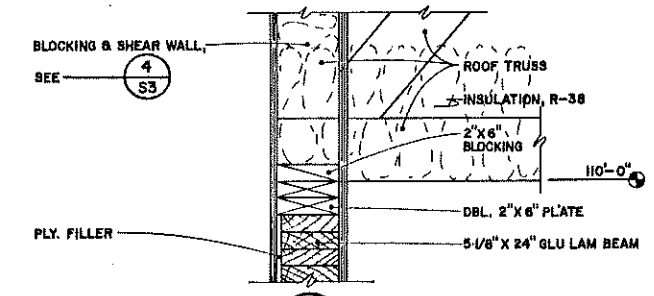
WALL SECTION 1 1 1/2" = 1'-0"



WALL SECTION 2 1 1/2" = 1'-0"

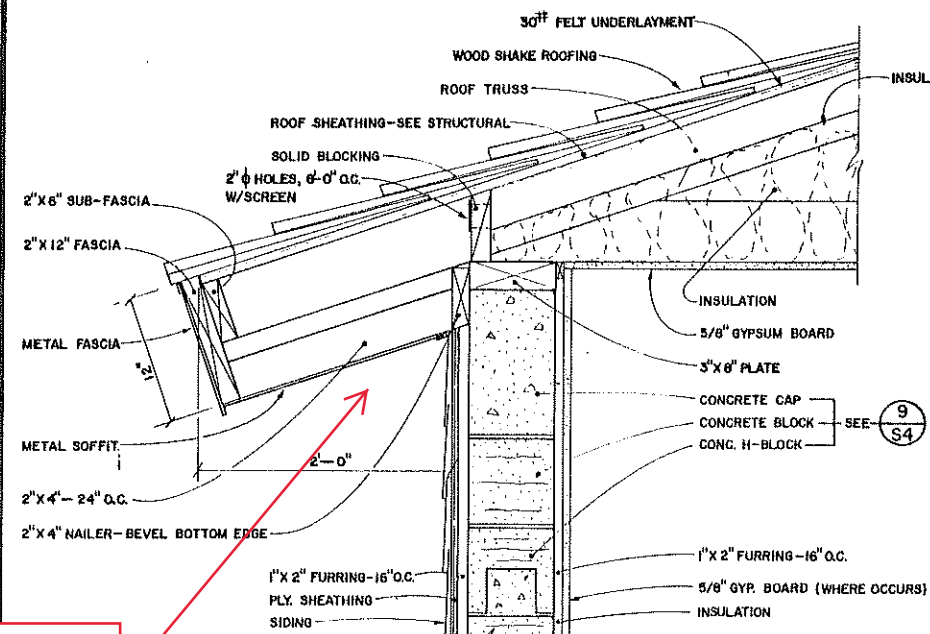


WALL SECTION 3 1 1/2" = 1'-0"

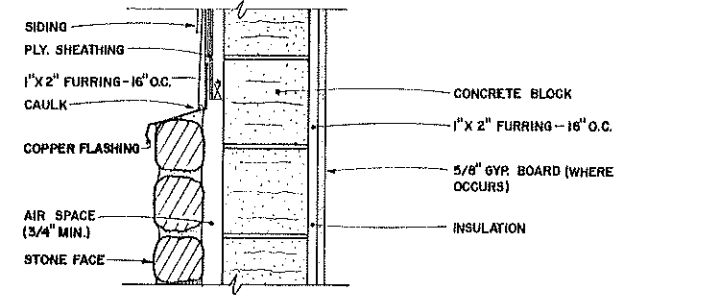


WALL SECTION 4 1 1/2" = 1'-0"

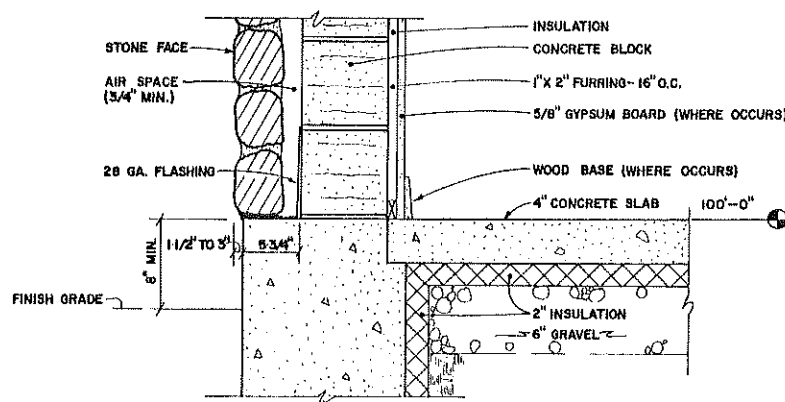
U.S. Department of Agriculture FOREST SERVICE		McCALL SMOKEJUMPER BASE	
Region 4 Engineering		PAYETTE NATIONAL FOREST McCall, IDAHO	
DESIGN	BY: W. MOFFETT	PARALOFT BUILDING WALL SECTIONS & DETAILS	
CHECK	B. CROCKETT		
DRAWN	BY: G.W. GIBBONS		
CHECK	W. MOFFETT	DRAWING NO. 270 11 31	
APPROVED	DATE 6/1/86		



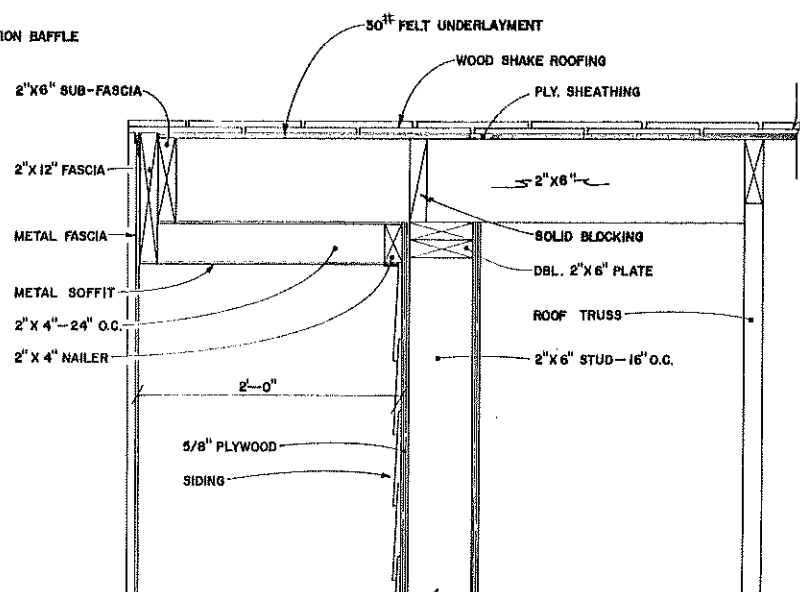
WALL SECTION  
1 1/2" = 1'-0"



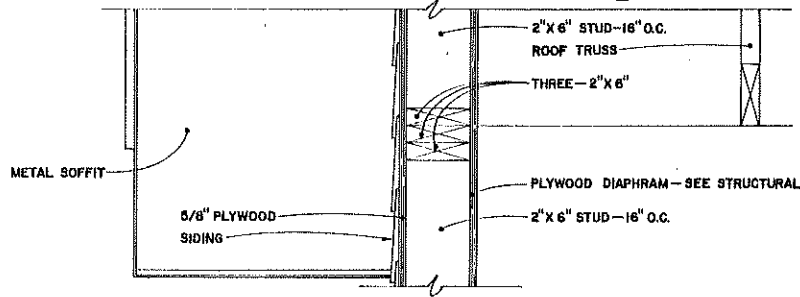
WALL SECTION  
1 1/2" = 1'-0"



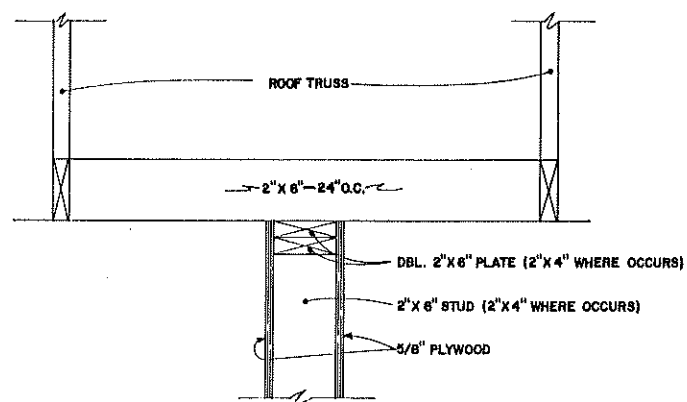
WALL SECTION  
1 1/2" = 1'-0"



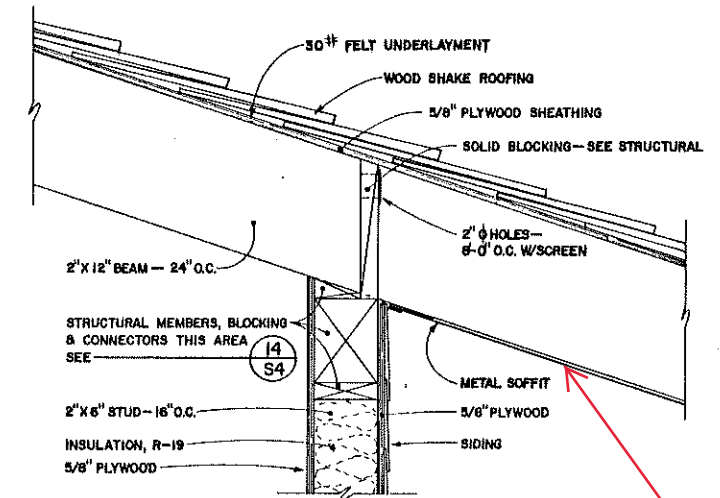
WALL SECTION  
1 1/2" = 1'-0"



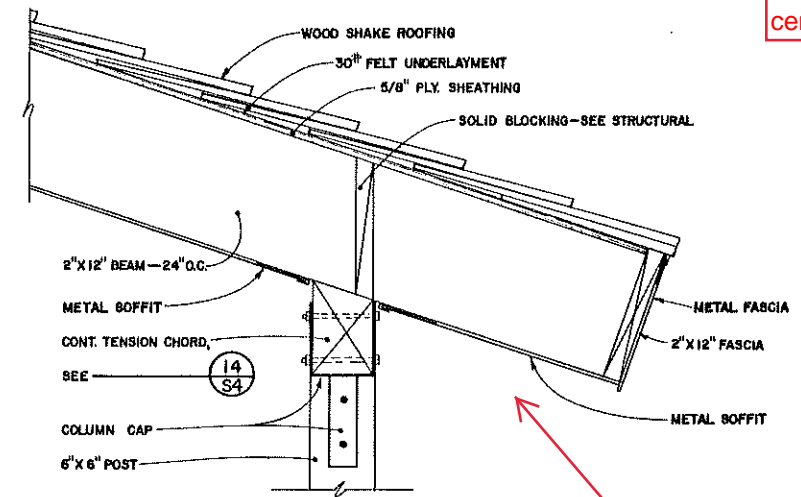
WALL SECTION  
1 1/2" = 1'-0"



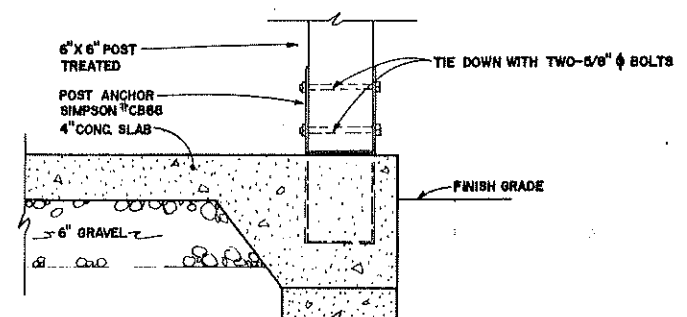
WALL SECTION  
1 1/2" = 1'-0"



WALL SECTION  
1 1/2" = 1'-0"



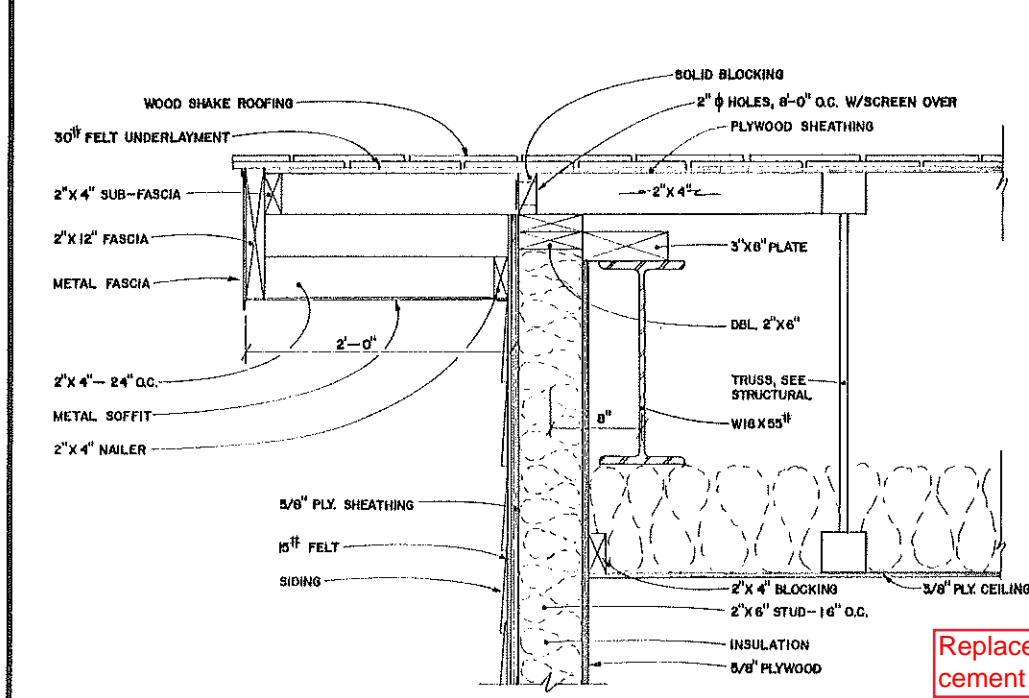
WALL SECTION  
1 1/2" = 1'-0"



WALL SECTION  
1 1/2" = 1'-0"

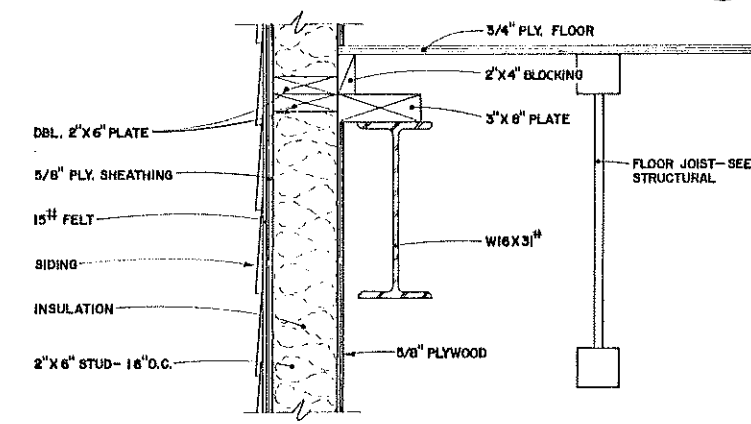
U.S. Department of Agriculture FOREST SERVICE		McCALL SMOKEJUMPER BASE	
Region 4 Engineering		PAYETTE NATIONAL FOREST McCall, IDAHO	
DESIGN	BY W. MOFFETT CHECK B.C. ROCKWELL	PARALOFT BUILDING WALL SECTIONS & DETAILS	
DRAWN	BY G.W. GIBBONS CHECK W.M. OFFETT	DRAWING NO.	270
APPROVED	DATE 6/18/66	12	31
TITLE Act. Dir. Engr.			





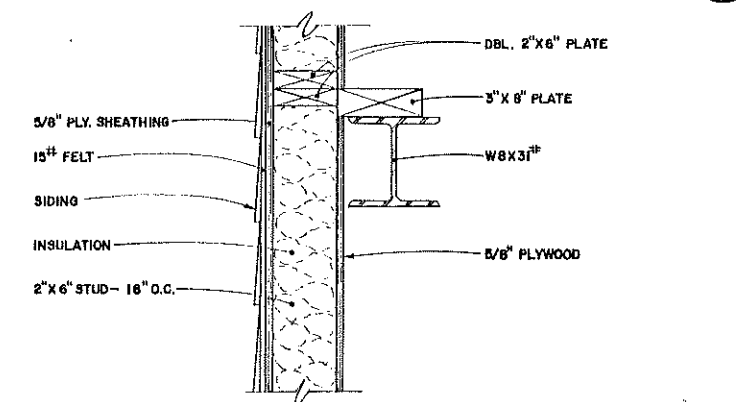
WALL SECTION  
1 1/2" = 1'-0"

1  
13



WALL SECTION  
1 1/2" = 1'-0"

2  
13

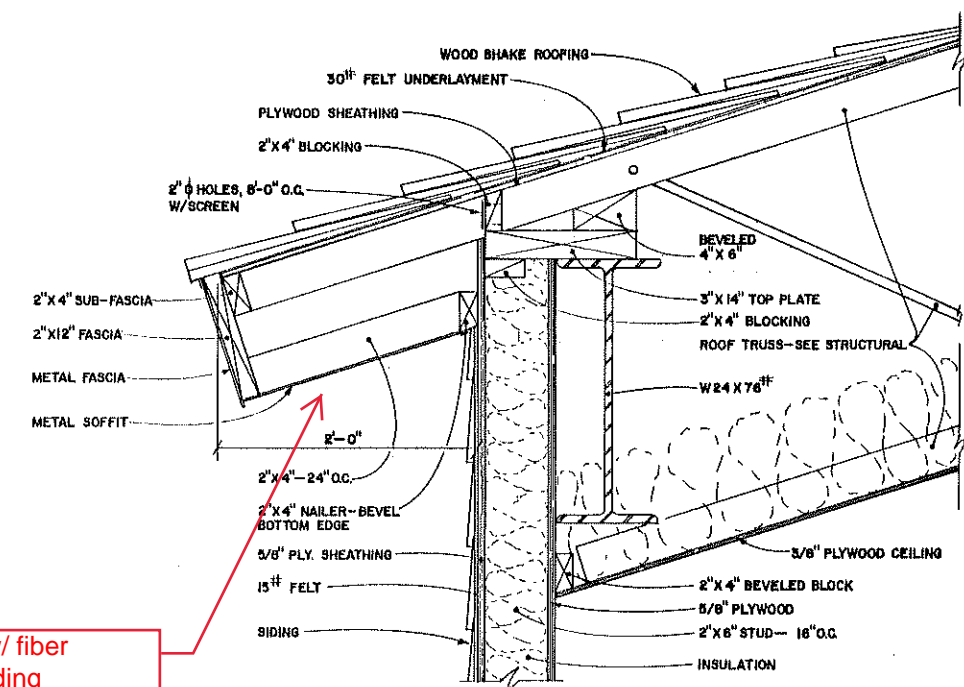


WALL SECTION  
1 1/2" = 1'-0"

3  
13

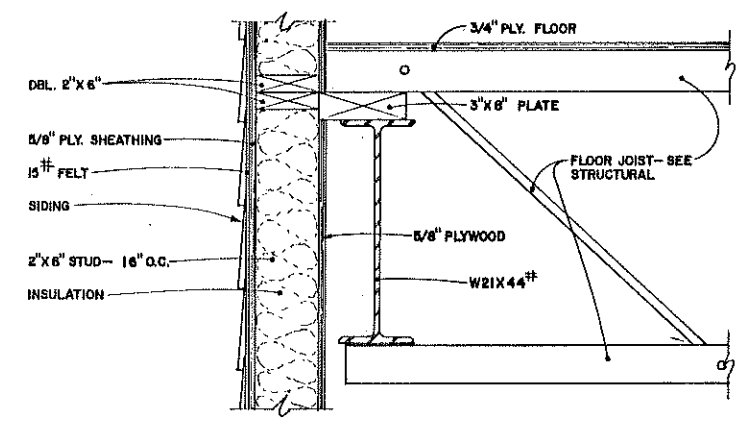


Replace w/ fiber cement siding



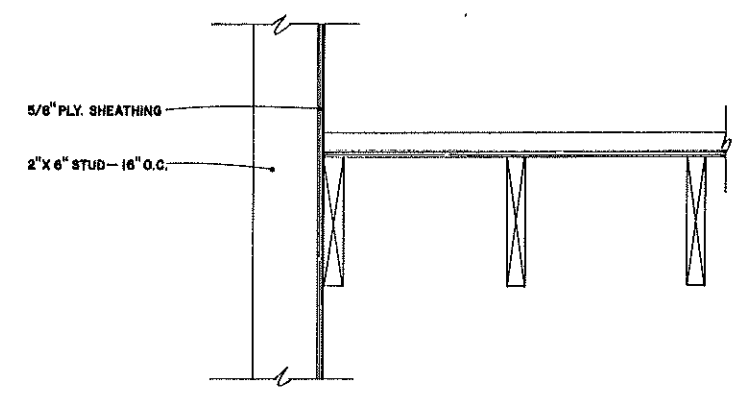
WALL SECTION  
1 1/2" = 1'-0"

4  
13



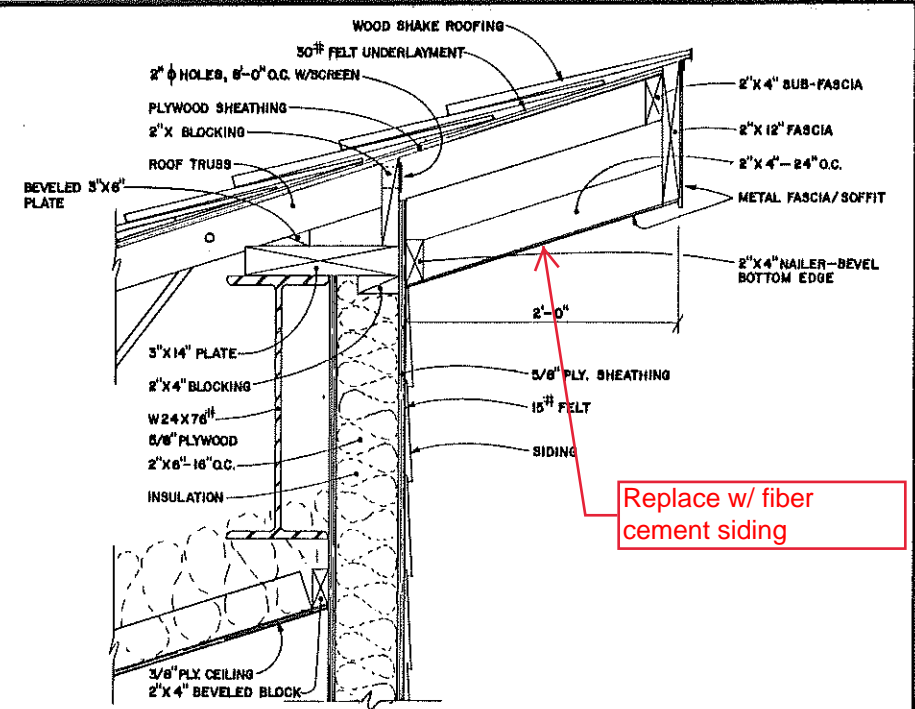
WALL SECTION  
1 1/2" = 1'-0"

5  
13



WALL SECTION  
1 1/2" = 1'-0"

6  
13



WALL SECTION  
1 1/2" = 1'-0"

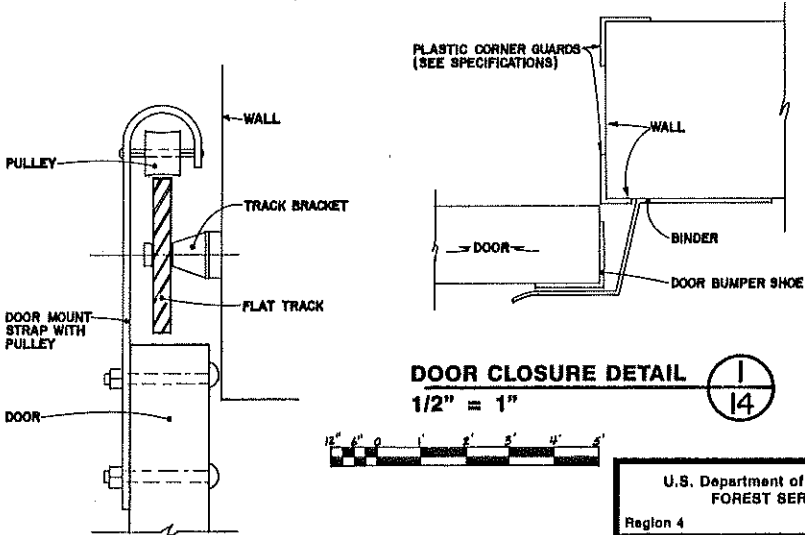
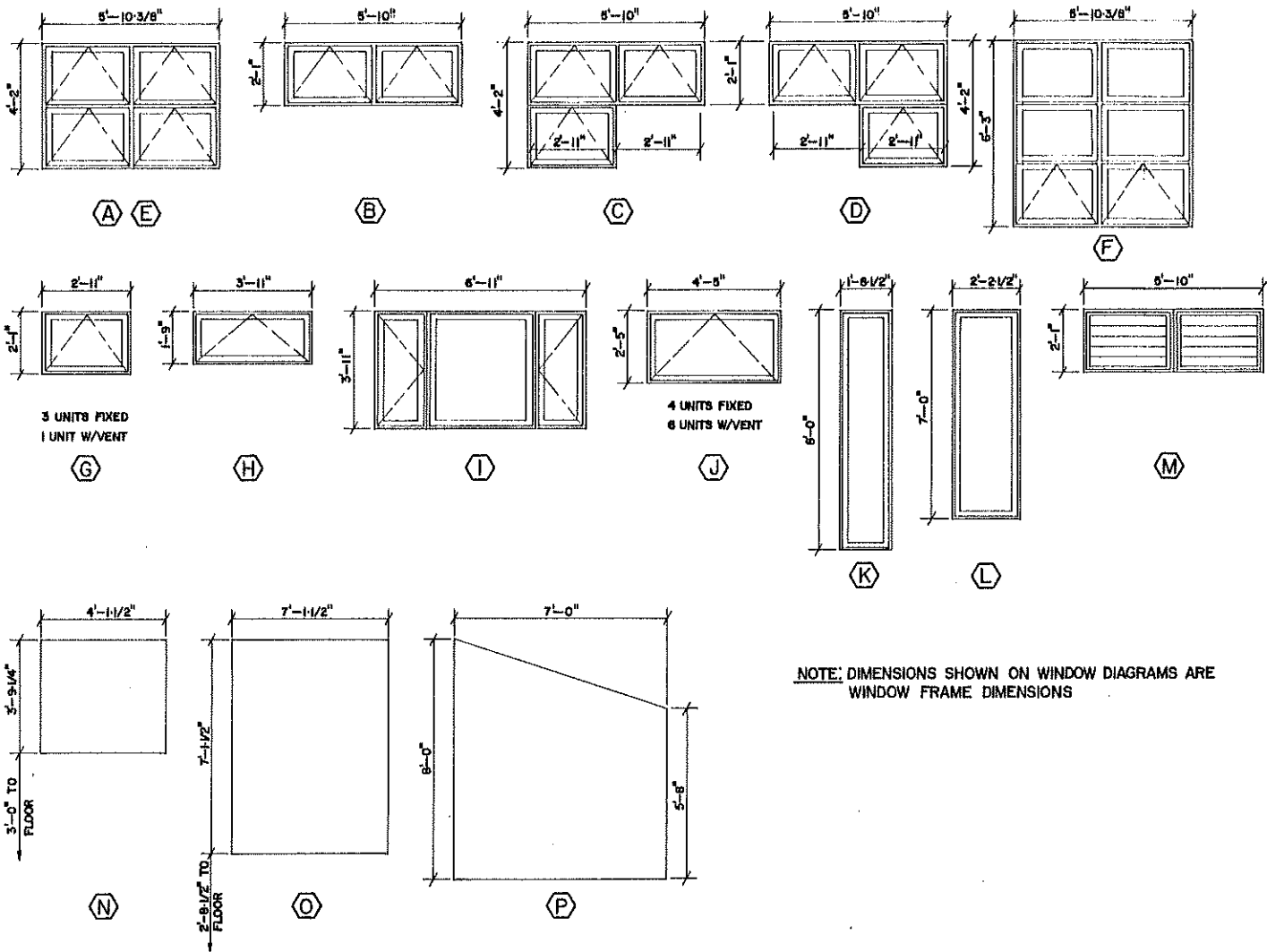
7  
13

Replace w/ fiber cement siding

U.S. Department of Agriculture FOREST SERVICE		McCALL SMOKEJUMPER BASE	
Region 4 Engineering		PAYETTE NATIONAL FOREST McCALL, IDAHO	
DESIGN	BY W. MOFFETT CHECK B. CROCKETT	PARALOFT BUILDING WALL SECTIONS	
DRAWN	BY G.W. GIBBONS CHECK W. MOFFETT		
APPROVED	DATE 6/18/86	DRAWING NO. 270	13 of 31

PARALOFT BUILDING  
WINDOW SCHEDULE

MARK	NO. REQD.	TYPE	ROUGH OPENING	HEAD	JAMB	SILL	MULLION	TRANSOM	NOTES
(A)	14	SEE WINDOW DIAGRAM	5'-10 7/8" X 4'-2 3/4"	(1 15)	(2 15)	(3 15)	(16 15)	(14 15)	PELLA CLAD AWNING WINDOW #3020 CA 22 W/ 3/8" MULLION REINFORCEMENT
(B)	7		5'-10 1/2" X 2'-1 3/4"	(1 15)	(2 15)	(3 15)	(15 15)		PELLA CLAD AWNING WINDOW #3020 CA 21
(C)	1		5'-10 1/2" X 4'-2 3/4"	(1 15)	(2 15)	(3 15)	(15 15)	(14 15)	PELLA CLAD AWNING WINDOW #3020 CA 21 PLUS #3020 CA 11 BELOW—SEE DIAGRAM
(D)	1		5'-10 1/2" X 4'-2 3/4"	(1 15)	(2 15)	(3 15)	(15 15)	(14 15)	PELLA CLAD AWNING WINDOW #3020 CA 21 PLUS #3020 CA 11 BELOW—SEE DIAGRAM
(E)	2		5'-10 7/8" X 4'-2 3/4"	(7 15)	(8 15)	(9 15)	(16 15)	(14 15)	PELLA CLAD AWNING WINDOW #3020 CA 22 W/ 3/8" MULLION REINFORCEMENT
(F)	2		5'-11 1/4" X 6'-3 3/4"	(1 15)	(2 15)	(3 15)	(16 15)	(14 15)	PELLA CLAD AWNING WINDOW #3020 CA 23 W/ 3/8" MULLION REINFORCEMENT
(G)	4		2'-11 1/2" X 2'-1 3/4"	(1 15)	(2 15)	(3 15)			PELLA CLAD AWNING WINDOW #3020 CA 11 WINDOW AT END OF HALL VENTED
(H)	8		3'-11 1/2" X 1'-9 3/4"	(1 15)	(2 15)	(3 15)			PELLA CLAD AWNING WINDOW #4216 CA 11 ALL UNITS W/REMOTE OPERATORS SEE (24)
(I)	4		6'-11 1/2" X 3'-11 3/4"	(10 15)	(11 15)	(12 15)	(13 15)		PELLA CLAD CASEMENT WINDOW #1642 CC— 3642 CC—1642 CC
(J)	10		4'-5 1/2" X 2'-5 3/4"	(4 15)	(5 15)	(6 15)			PELLA CLAD AWNING WINDOW #4824 CA 11 6-UNITS W/REMOTE OPERATORS SEE (24)
(K)	4		1'-9" X 8'-0 3/4"	(17 15)	(18 15)	(19 15)			PELLA CLAD FRAME GLAZED W/ 1/4" LEXAN. SAND BLAST GLAZING TO FROSTED FINISH
(L)	1		2'-3" X 7'-0 3/4"	(17 15)	(18 15)	(19 15)			PELLA CLAD FRAME GLAZED W/ DOUBLE GLAZED CLEAR GLASS
(M)	1		5'-10 1/2" X 2'-1 3/4"	(20 15)	(21 15)	(22 15)			PELLA CLAD FRAME — LOUVER L-3 MOUNTED IN FRAME—SEE SHEET M-4
(N)	3		4'-2" X 3'-10"	(23 15)	(24 15)	(25 15)			SINGLE GLAZING SET IN OAK FRAME
(O)	1		7'-2" X 7'-2 1/4"	(23 15)	(24 15)	(25 15)			REAR SCREEN PROJECTION GLAZING—SEE SPEC.
(P)	2		7'-0 1/2" X VARIES (SEE WINDOW DIAGRAM)	(17 15)	(18 15)	(19 15)			PELLA CLAD FRAME GLAZED W/ 1/4" LEXAN. SAND BLAST GLAZING TO A FROSTED FINISH



DOOR TRACK DETAIL (2)  
1/2" = 1"

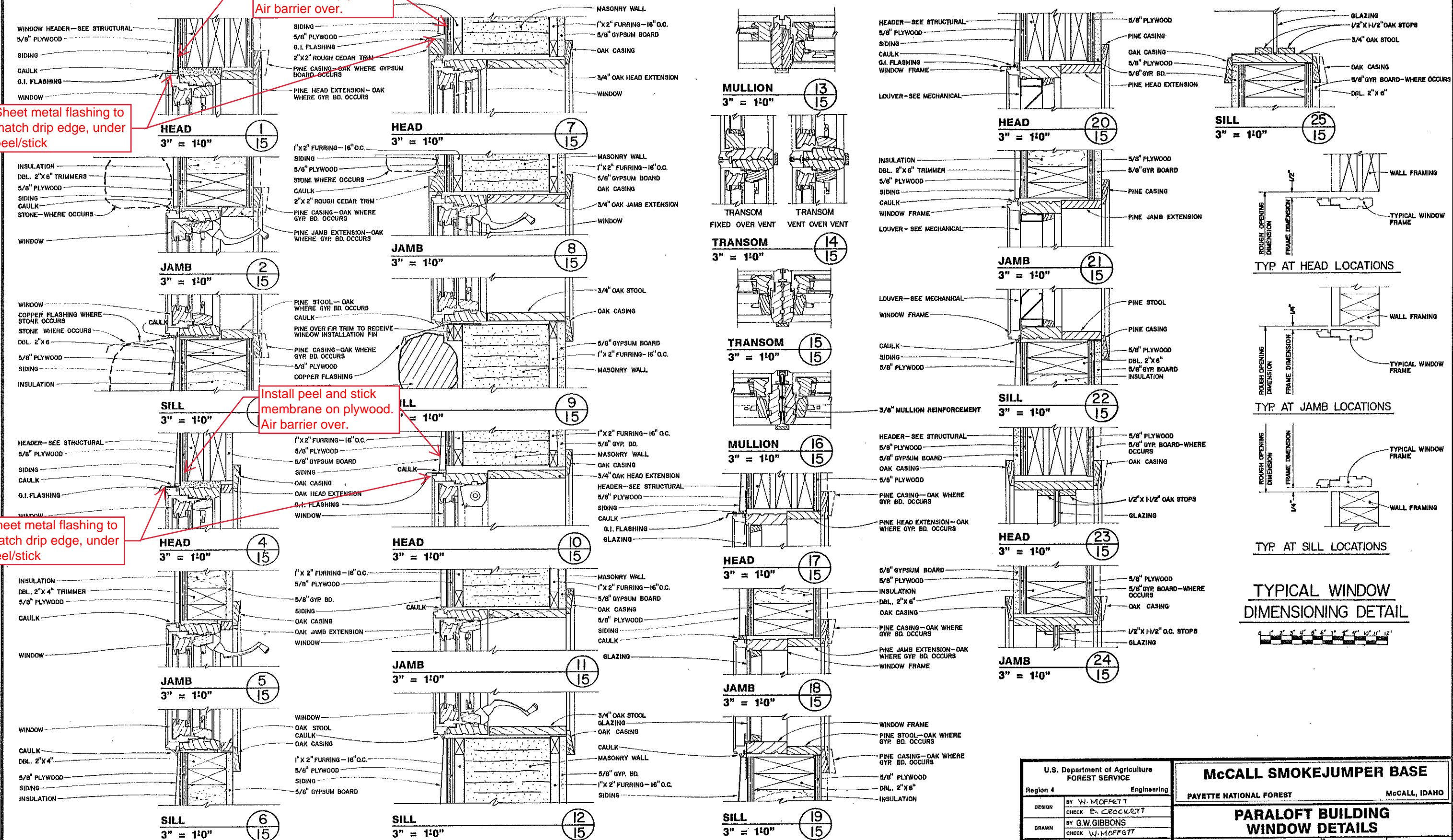
U.S. Department of Agriculture FOREST SERVICE		McCALL SMOKEJUMPER BASE	
Region 4 Engineering		PAYETTE NATIONAL FOREST McCALL, IDAHO	
DESIGN	BY W. McOFFETT CHECK B. CROCKETT	PARALOFT BUILDING WINDOW DETAILS	
DRAWN	BY G.W. GIBBONS CHECK W. McOFFETT	DRAWING NO.	270
APPROVED	By [Signature] TITLE Act. Dir. Engr. DATE 6/18/86	14	31

Install peel and stick membrane on plywood. Air barrier over.

Sheet metal flashing to match drip edge, under peel/stick

Install peel and stick membrane on plywood.  
Air barrier over.

Sheet metal flashing to match drip edge, under peel/stick



TYP AT HEAD LOCATIONS

TYP. AT JAMB LOCATIONS

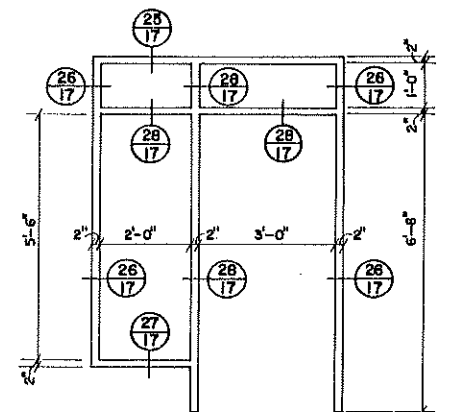
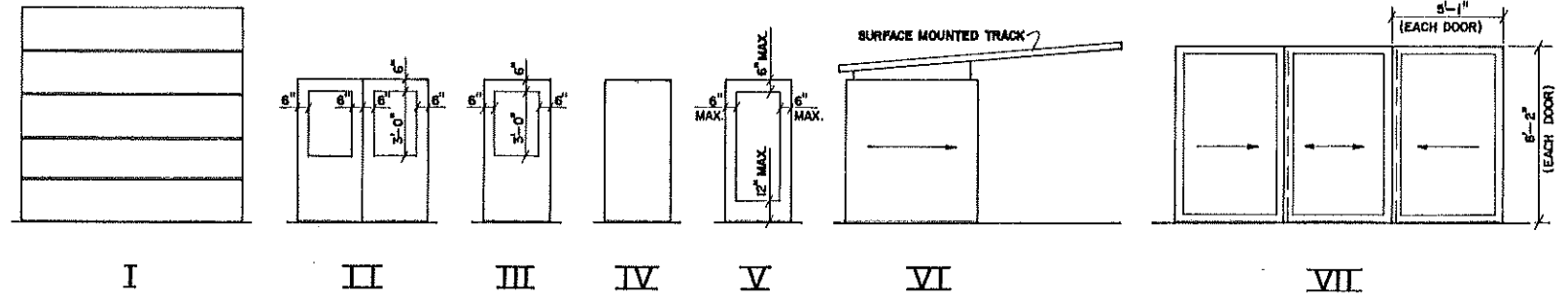
TYP. AT SILL LOCATIONS

TYPICAL WINDOW  
DIMENSIONING DETAIL

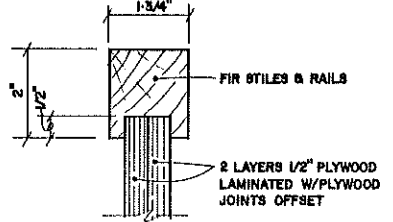
U.S. Department of Agriculture FOREST SERVICE		McCALL SMOKEJUMPER BASE	
Region 4		Engineering	
DESIGN	BY W. MOFFETT CHECK B. CROCKETT	PAYETTE NATIONAL FOREST	
DRAWN	BY G.W. GIBBONS CHECK W. MOFFETT	McCALL, IDAHO	
APPROVED <u>W. MOFFETT</u>		PARALOFT BUILDING WINDOW DETAILS	
TITLE <u>Art. Det. Engr.</u> DATE <u>6/1/86</u>		DRAWING NO. <u>270</u>	SHEET <u>15</u> OF <u>31</u>



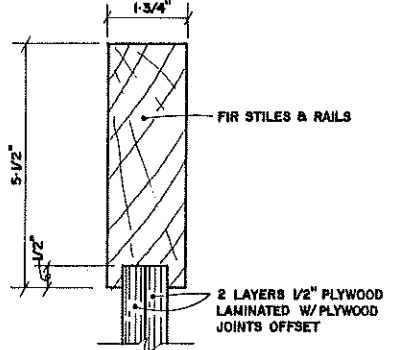
DOOR SCHEDULE								
MARK	DOOR SIZE	DOOR MATERIAL	DOOR TYPE	HEAD	JAMB	THRESH.	HARDWARE GROUP	NOTES
①	12'-0" X 10'-0" X 2"	INSULATED METAL	I	① 17	② 17	③ 17	1	OVERHEAD DOOR
②	12'-0" X 10'-0" X 2"	INSULATED METAL	I	① 17	② 17	③ 17	1	OVERHEAD DOOR
③	PR. 3'-0" X 6'-8" X 1-3/4"	INSULATED METAL	II	④ 17	⑤ 17	⑥ 17	2	
④	3'-0" X 6'-8" X 1-3/4"	INSULATED METAL	III	⑦ 17	⑧ 17	⑨ 17	3	
⑤	3'-0" X 6'-8" X 1-3/4"	INSULATED METAL	V	—	—	⑥ 17	3	IN HOLLOW METAL FRAME W/SIDELIGHT, SEE ①6
⑥	3'-0" X 6'-8" X 1-3/4"	INSULATED METAL	III	⑨ 17	⑩ 17	⑥ 17	4	
⑦	6'-0" X 6'-8" X 1-3/4"	STEEL	VI	② 14	① 14	—	5	
⑧	6'-0" X 6'-8" X 1-3/4"	STEEL	VI	② 14	① 14	—	5	
⑨	6'-0" X 6'-8" X 1-3/4"	STEEL	VI	② 14	① 14	—	5	
⑩	4'-0" X 6'-8" X 1-3/4"	STEEL	III	⑪ 17	⑫ 17	—	6	
⑪	PR. 3'-0" X 6'-8" X 1-3/4"	STEEL	II	⑮ 17	⑯ 17	—	7	
⑫	3'-0" X 6'-8" X 1-3/4"	S.C. OAK	IV	⑪ 17	⑫ 17	—	6	
⑬	3'-0" X 6'-8" X 1-3/4"	S.C. OAK	III	⑪ 17	⑫ 17	—	6	
⑭	3'-0" X 6'-8" X 1-3/4"	S.C. OAK	IV	⑬ 17	⑭ 17	—	6	
⑮	3'-0" X 6'-8" X 1-3/4"	S.C. OAK	IV	⑬ 17	⑭ 17	—	6	
⑯	3'-0" X 6'-8" X 1-3/4"	S.C. OAK	IV	⑬ 17	⑭ 17	—	8	
⑰	3'-0" X 6'-8" X 1-3/4"	S.C. OAK	IV	⑬ 17	⑭ 17	—	8	
⑱	3'-0" X 6'-8" X 1-3/4"	S.C. OAK	IV	⑮ 17	⑯ 17	—	6	
⑲	3'-0" X 6'-8" X 1-3/4"	S.C. OAK	IV	⑮ 17	⑯ 17	—	6	
⑳	3'-0" X 6'-8" X 1-3/4"	S.C. OAK	IV	⑮ 17	⑯ 17	—	9	
㉑	3'-0" X 6'-8" X 1-3/4"	S.C. OAK	IV	⑮ 17	⑯ 17	—	9	
㉒	3'-0" X 6'-8" X 1-3/4"	S.C. OAK	IV	⑮ 17	⑯ 17	—	9	
㉓	3'-0" X 6'-8" X 1-3/4"	S.C. OAK	IV	⑮ 17	⑯ 17	⑰ 17	10	POCKET DOOR—LATCH SIDE JAMB ⑰
㉔	4'-0" X 6'-8" X 1-3/4"	S.C. OAK	IV	⑮ 17	⑯ 17	—	6	
㉕	3'-0" X 6'-8" X 1-3/4"	S.C. OAK	IV	⑮ 17	⑯ 17	—	6	
㉖	3'-0" X 6'-8" X 1-3/4"	INSULATED METAL	V	⑮ 17	⑯ 17	—	6	
㉗	3'-0" X 6'-8" X 1-3/4"	INSULATED METAL	V	⑮ 17	⑯ 17	—	6	
㉘	3'-0" X 6'-8" X 1-3/4"	S.C. OAK	IV	⑲ 17	⑳ 17	㉑ 17	6	
㉙	3'-0" X 6'-8" X 1-3/4"	S.C. OAK	IV	⑲ 17	⑳ 17	㉑ 17	6	
㉚	3'-0" X 6'-8" X 1-3/4"	S.C. OAK	III	⑮ 17	⑯ 17	—	11	
㉛	3'-0" X 6'-8" X 1-3/4"	S.C. OAK	IV	⑮ 17	⑯ 17	⑰ 17	8	
㉜	3'-0" X 6'-8" X 1-3/4"	S.C. OAK	IV	⑮ 17	⑯ 17	⑰ 17	8	
㉝	3'-0" X 6'-8" X 1-3/4"	S.C. OAK	IV	⑮ 17	⑯ 17	—	11	
㉞	3'-0" X 6'-8" X 1-3/4"	S.C. OAK	III	⑮ 17	⑯ 17	—	11	
㉟	3'-0" X 6'-8" X 1-3/4"	S.C. OAK	III	⑮ 17	⑯ 17	—	11	
㊱	3'-0" X 6'-8" X 1-3/4"	S.C. OAK	III	⑮ 17	⑯ 17	—	11	
㊲	3'-0" X 6'-8" X 1-3/4"	S.C. OAK	IV	⑮ 17	⑯ 17	—	6	
㊳	3'-0" X 6'-8" X 1-3/4"	S.C. OAK	IV	⑮ 17	⑯ 17	—	6	
㊴	2'-8" X 6'-8" X 1-3/4"	S.C. OAK	IV	⑮ 17	⑯ 17	—	6	
㊵	3'-0" X 6'-8" X 1-3/4"	S.C. OAK	IV	⑮ 17	⑯ 17	—	6	
㊶	THREE— 5'-1" X 8'-2" X 1-3/4"	CUSTOM WOOD	VII	② 21	③ 21	④ 21	12	CUSTOM BUILT SEE— ② ③ ④
㊷	THREE— 5'-1" X 8'-2" X 1-3/4"	CUSTOM WOOD	VII	② 21	③ 21	④ 21	12	CUSTOM BUILT SEE— ② ③ ④
㊸	37'-7/8" X 9'-10-3/8"	FOLDING PANELS	—	① 19	② 18 ④ 18	⑤ 18	—	SEE FOLDING PARTITION SPECIFICATION



DOOR FRAME  
1/2" = 10"



DOOR RAIL  
1/2" = 1"



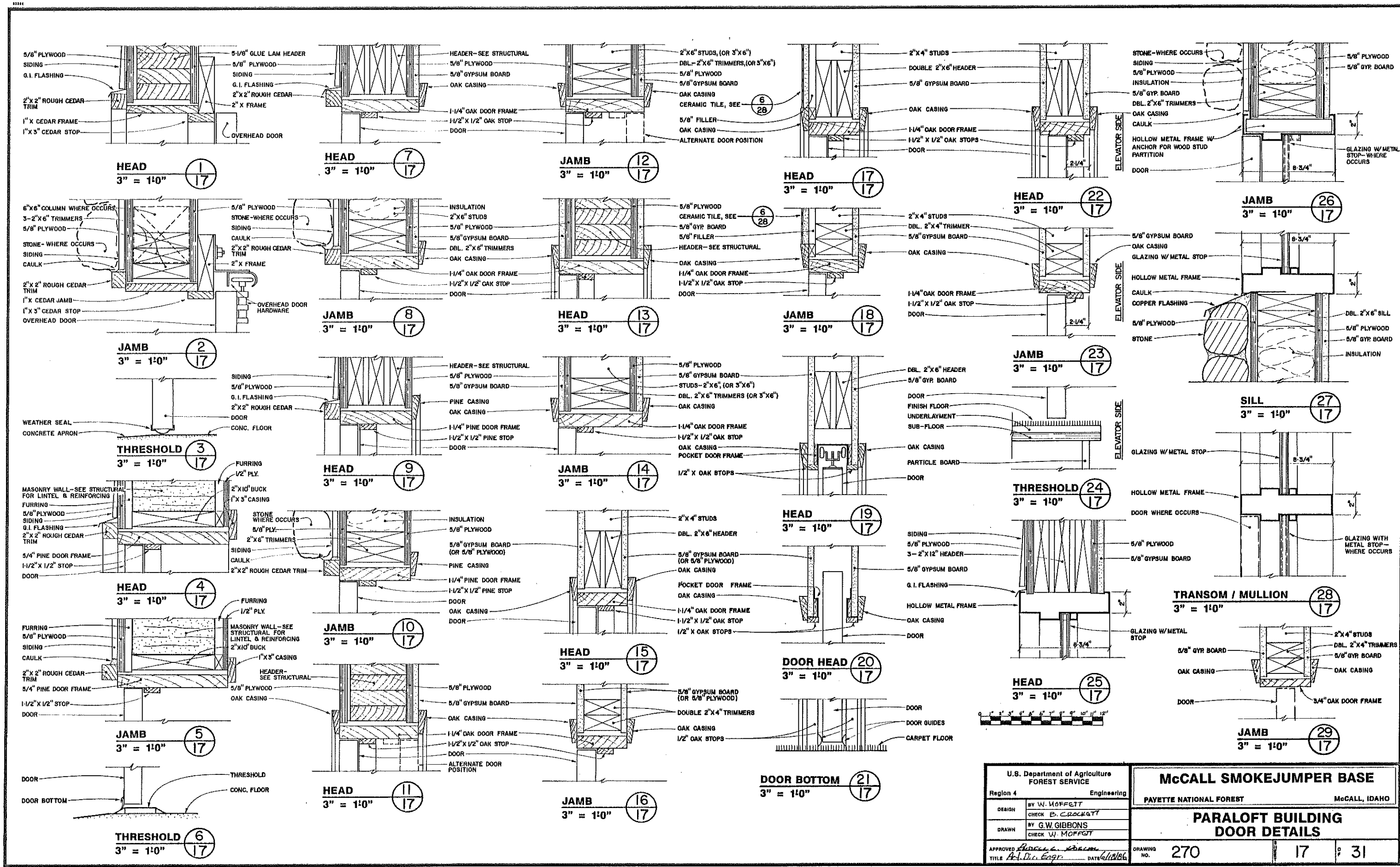
DOOR STILE  
1/2" = 1"

### HARDWARE SCHEDULE

HARDWARE GROUP QUANTITY PER DOOR			ITEM:	MANUFACTURER HARDWARE GROUP QUANTITY PER DOOR			ITEM:	MANUF.
1	1 EA.	CYLINDER 20-022 612 MK BALANCE BY DOOR SUPPLIER		A	9	1-1/2 PR. 1 EA. 1 EA.	HINGES BB 1279 4-1/2"X 4-1/2" USIO LOCKSET D53PD ORBIT 612 MK STOP 302TB USIO	B A D
2	3 PR. 1 EA. 2 EA. 2 EA. 1 EA. 1 SET 2 EA. 2 EA.	HINGES BB1191 4-1/2"X 4-1/2" USIO NRP LOCKSET L9553P X 42 612 MK CLOSER P8504 DBL FLUSHBOLTS 1358-12 USIO THRESHOLD 171B WEATHERSTRIP S88D DOOR BOTTOM 307B STOPS 302ES USIO	B A C D E E E D	10	1 EA. 1 EA.	POCKET DOOR FRAME 2826 PULL 100 USIO	H D	
				11	1-1/2 PR. 1 EA. 1 EA. 1 EA.	HINGES BB1279 4-1/2"X 4-1/2" USIO LOCKSET D70PD ORBIT 612 MK CLOSER 8503 DBL STOP 302TB USIO	B A C D	
3	1-1/2 PR. 1 EA. 1 EA. 1 EA. 1 SET 1 EA. 1 EA. 1 EA.	HINGES BB1191 4-1/2"X 4-1/2" USIO NRP EXIT DEVICE 99TP USIO CYLINDER 20-022 612 MK CLOSER P8504 DBL THRESHOLD 171B WEATHERSTRIP S88D DOOR BOTTOM 307B STOP 302ES USIO	B F A C E E E D	12	4 PCS 8 EA. 2 EA. 9 EA. 2 EA. 3 EA. 3 EA.	TRACK X2641- 8'-0" BRACKETS X2651-T END CAPS X2641-EC HANGERS X2650 DOOR STOPS 1231 STAY ROLLERS 2559-1/2 PULLS 2689-10	H H H H H H H	
4	1-1/2 PR. 1 EA. 1 EA. 1 EA. 1 EA. 1 EA.	HINGES BB1191 4-1/2"X 4-1/2" USIO NRP LOCKSET L9553P X 42 612 MK CLOSER P8504 DBL THRESHOLD 171B DOOR BOTTOM 307B STOP 302TB USIO	B A C E E D	MANUFACTURERS:				
5	1 EA. 1 SET	FIRE DOOR #647 HARDWARE FOR FIRE DOOR #2102	G G	A— SCHLAGE				
6	1-1/2 PR. 1 EA. 1 EA. 1 EA.	HINGES BB1279 4-1/2"X 4-1/2" USIO LOCKSET D53PD ORBIT 612 MK CLOSER 8504 DBL STOP 302TB USIO	B A C D	B— HAGER				
				C— NORTON				
7	3 PR. 1 EA. 2 EA. 2 EA. 2 EA.	HINGES BB1279 4-1/2"X 4-1/2" USIO LOCKSET D53PD ORBIT 612 MK CLOSERS 8503 DBL FLUSHBOLTS 1358-12 USIO STOPS 302TB USIO	B A C D D	D— QUALITY				
				E— PEMKO				
8	1-1/2 PR. 1 EA. 1 EA. 1 EA. 1 EA. 1 EA.	HINGES BB1279 4-1/2"X 4-1/2" USIO CLOSER 8503 DBL PUSH 40 3-1/2"X 15" USIO PULL 1510 3-1/2" X 15" USIO KICKPLATE 10"X 2" LDW USIO STOP 302TB USIO SIGN-MEN OR WOMEN-PLASTIC	B C D D D D D	F— VON DUPRIN				
				G— RICHARDS-WILCOX				
				H— STANLEY				

MANUFACTURERS:  
A— SCHLAGE  
B— HAGER  
C— NORTON  
D— QUALITY  
E— PEMKO  
F— VON DUPRIN  
G— RICHARDS-WILCOX  
H— STANLEY

U.S. Department of Agriculture FOREST SERVICE		McCALL SMOKEJUMPER BASE	
Region 4 Engineering		PAYETTE NATIONAL FOREST McCALL, IDAHO	
DESIGN	BY W. MOFFETT	PARALOFT BUILDING	
CHECK	BY C. CROCKETT	DOOR & HARDWARE SCHEDULE	
DRAWN	BY G.W. GIBBONS		
CHECK	BY W. MOFFETT		
APPROVED	BY [Signature]	DRAWING NO.	270
TITLE	At. D. L. Engr.	16	31



U.S. Department of Agriculture FOREST SERVICE		<b>McCALL SMOKEJUMPER BASE</b>	
Region 4	Engineering	PAYETTE NATIONAL FOREST	McCALL, IDAHO
DESIGN	BY W. MOFFETT	<b>PARALOFT BUILDING DOOR DETAILS</b>	
	CHECK B. CROCKETT		
DRAWN	BY G.W. GIBBONS	DRAWING NO. 270	
	CHECK W. MOFFETT		
APPROVED	DATE 6/10/86	17	31
TITLE	Arch. Engr.		