

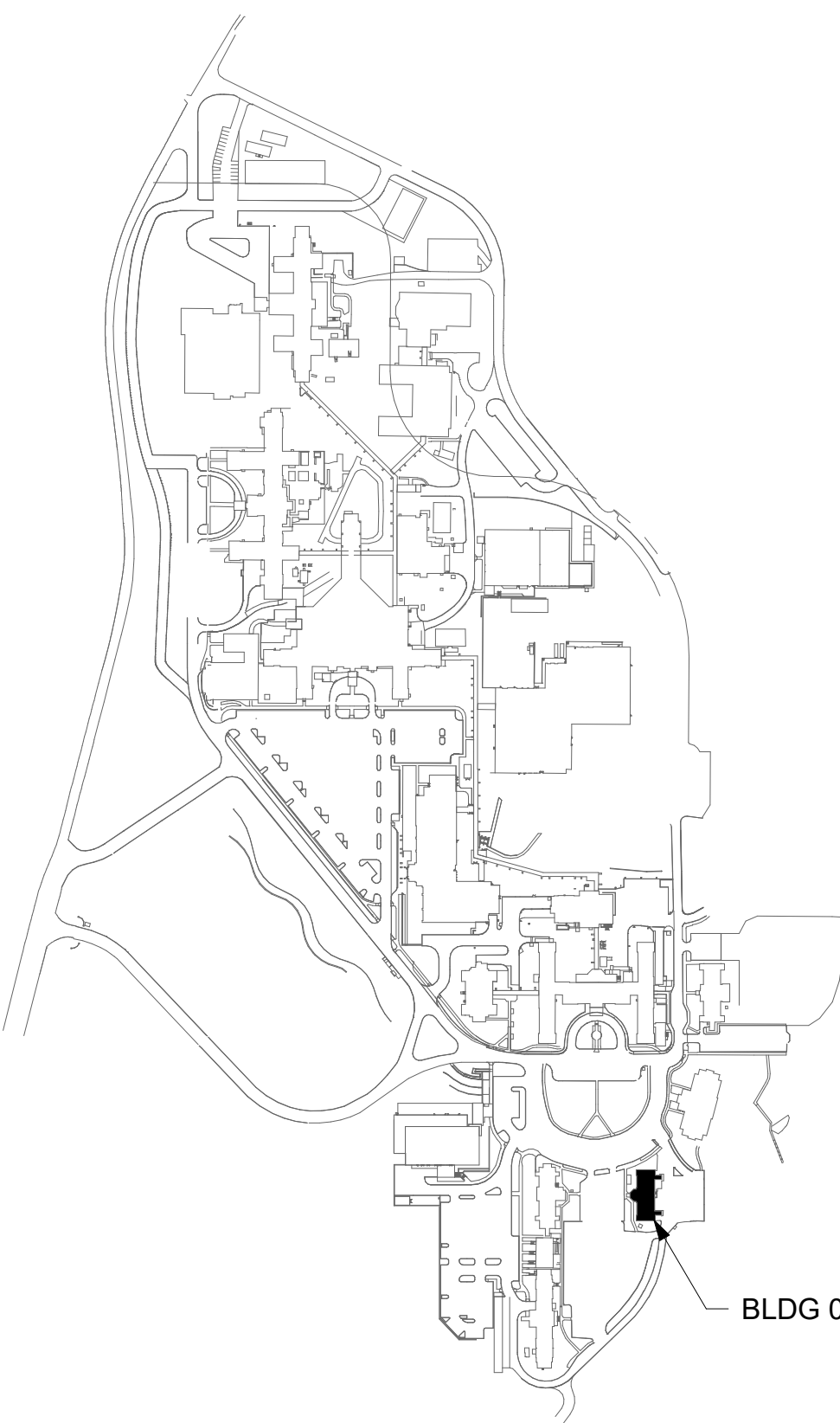
GENERAL NOTES

- ALL EXISTING EQUIPMENT MAY NOT BE SHOWN FOR CLARITY. CONTRACTOR SHALL FIELD VERIFY ALL POWER AND SIGNAL DEVICES AND ASSOCIATED CIRCUITRY AS REQUIRED. ALL RACEWAYS AND CONDUCTORS ASSOCIATED WITH EQUIPMENT TO BE DEMOLISHED SHALL BE DEMOLISHED BACK TO THEIR SOURCE, UNLESS OTHERWISE NOTED.
- PROTECT ALL EXISTING WORK FROM DAMAGE DURING CONSTRUCTION. ANY DAMAGED MATERIALS, SYSTEMS, COMPONENTS, FINISHES BE LIKE, SHALL BE REPAIRED OR REPLACED AT THE EXPENSE OF THE CONTRACTOR TO THE ACCEPTANCE OF THE OWNER. COORDINATE WITH ARCHITECTURAL DRAWINGS AS REQUIRED.
- SEAL ALL INTERIOR WALL AND CEILING PENETRATIONS TO MATCH EXISTING FIRE RATING OR NEW FIRE RATING, IF REQUIRED.
- ALL TELECOMMUNICATIONS CABLING CATEGORY 6 AND BELOW SHALL BE UPGRADED WITH CAT6A PORTS AND CABLE QUANTITIES INDICATED, UNLESS NOTED OTHERWISE.
- TELECOMMUNICATIONS CABLES SHALL BE ROUTED IN EXISTING PATHWAY VACATED BY EXISTING CABLING. PROVIDE RACEWAYS TO EXTEND TO ASSOCIATED TR.
- A TELECOMMUNICATIONS OUTLET UPGRADE SHALL INCLUDE, BUT IS NOT LIMITED TO REMOVING AND DISPOSING EXISTING DEVICES AND CABLES; PROVIDING ALL LABOR, MATERIALS, TOOLS, TEST INSTRUMENTS, AND CONSUMABLES REQUIRED FOR THE INSTALLATION, TERMINATION, TESTING, LABELING, AND CERTIFICATION OF A FULLY FUNCTIONAL CATEGORY 6A OUTLET WITH THE PORT QUANTITY INDICATED.
- CONTRACTOR SHALL PROVIDE, INSTALL, AND TERMINATE HORIZONTAL CAT6A CABLING FROM EACH WAO (WORK AREA OUTLET) TO ITS RESPECTIVE TR.
- PROVIDE PULL BOXES SIZED PER ANSI/TIA-569 AT 100-FT INTERVALS IN STRAIGHT CONDUIT RUNS, OR CONDUIT CONTAINING BENDS TOTALING MORE THAN 180 DEGREES.
- PROVIDE CONDUITS AND SLEEVES AS REQUIRED FOR ROUTING AND INSTALLATION OF HORIZONTAL AND BACKBONE CABLING. PROVIDE FIRE-STOP MATERIALS TO SEAL IN AND AROUND CONDUIT PER CODE. REFER TO ARCHITECTURAL DRAWINGS FOR PARTITION TYPES AND WALL HEIGHTS.
- OUTLET LOCATIONS ARE APPROXIMATE. DETERMINE EXACT LOCATIONS IN FIELD; DOCUMENT VARIANCES ON AS-BUILT DRAWINGS.
- CONTRACTOR SHALL BE RESPONSIBLE FOR RELOCATING FURNITURE, INCLUDING TRANSPORTATION, FOR ALL WORK TO DESIRED VA STORAGE LOCATION. COORDINATE WITH VA AS REQUIRED.
- ALL DATA CABLING SHALL BE SEGREGATED FROM OTHER SPECIAL SYSTEMS INCLUDING, BUT NOT LIMITED TO, SECURITY, FIRE ALARM, AND NURSE CALL SYSTEMS. WHEN ROUTED THROUGH CONDUIT, DATA CABLING SHALL HAVE ITS OWN RACEWAY. WHEN DATA CABLING IS ROUTED THROUGH A COMMON SPECIAL SYSTEMS CABLE TRAY, CABLING SHALL BE BUNDLED WITH LIKE SYSTEMS; ADDITIONALLY, CABLE TRAYS SHALL BE PROVIDED WITH TRAY DIVIDERS AS REQUIRED TO SEGREGATE SYSTEMS FROM ONE ANOTHER.
- FIBER - OPTIC CABLING ROUTES AND ASSOCIATED RACEWAYS/CABLE TRAY ARE DIAGRAMMATICAL. COORDINATE EXACT ROUTING WITH EXISTING CONDITIONS, ARCHITECTURAL FEATURES, MECHANICAL DUCTWORK, PIPING, EQUIPMENT, AND OTHER OBSTRUCTIONS PRIOR TO INSTALLATION.

KEY NOTES

- PROVIDE TELECOMMUNICATIONS OUTLET WITH PORT QUANTITY SHOWN TO REPLACE EXISTING TELECOMMUNICATION'S OUTLET; EXISTING OUTLET CONDUIT SHALL REMAIN AND BE UTILIZED TO FEED NEW CABLING. REFERENCE SHEET DETAIL "1" ON SHEET ET503 AND THE GENERAL NOTES ON THIS SHEET FOR ADDITIONAL INFORMATION. COORDINATE WITH VA FOR EXACT OUTLET PLACEMENT.
- EXISTING WIRELESS ACCESS POINT TO BE RE-FED WITH CAT6A CABLING.
- REMOVE AND REPLACE EXISTING CABLE TRAY IN THE AREAS SHOWN AS REQUIRED; IF CABLE TRAY IS NON-EXISTENT, PROVIDE CABLE TRAY AS INDICATED. REFERENCE DETAIL "6" ON SHEET ET503 AND TELECOMMUNICATIONS WAO AND CABLE TRAY SCHEDULE ON SHEET ET701. WHERE WALL EXTENDS TO CEILING, CABLE TRAY SHALL STOP AND TRANSITION TO CONDUIT SLEEVES ((2) 4" MINIMUM) WITH APPROPRIATE FIRE-PROOFING AND CAULKING TO PASS THROUGH WALL WHERE EXISTING CABLE TRAY AND/OR SLEEVES ARE DISCOVERED, EVALUATE CONDITION AND RACEWAY CAPACITY; IF CABLE TRAY AND/OR SLEEVES APPEAR TO BE REUSABLE, NOTIFY COR FOR POSSIBLE REUSE.
- FIBER-OPTIC CABLE VERTICAL ROUTING: COORDINATE EXACT LOCATIONS PRIOR TO INSTALLATION. UTILIZE RIGID CONDUIT SLEEVES WITH FIRE PROOFING AND ALL REQUIRED APPURTENANCES AS REQUIRED. REFERENCE DETAIL 2 ON SHEET ET503 FOR ADDITIONAL INFORMATION.

KEY PLAN



DATA OUTLETS AND DEVICES IN THIS AREA SHALL BE SERVED FROM TELECOMMUNICATION ROOM 308.

ALL BACKBONE CABLING ROUTES ARE DIAGRAMMATICAL; CONTRACTOR SHALL ENSURE A-SIDE AND B-SIDE ROUTING IS AS DIVERSE AS PRACTICAL. REFERENCE COMMUNICATIONS DRAWINGS FOR ALL REQUIRED FIBER-OPTIC CABLING.

1 BLDG 02 - FLOOR 3 - TELECOMMUNICATIONS PLAN
3/16" = 1'-0"



		CONSULTANT	ARCHITECT/ENGINEER OF RECORD	STAMP	Office of Construction and Facilities Management VA U.S. Department of Veterans Affairs	Drawing Title BLDG 02 - FLOOR 3 - TELECOMMUNICATIONS PLAN	Phase CONSTRUCTION DOCUMENTS	Project Title EHRM INFRASTRUCTURE UPGRADES	Project Number 657-21-701JB
			A/E: SPEES DESIGN BUILD 625 1ST AVE, STE 301 SEATTLE, WA 98104 (206) 590-2118 RAY SPEES	LOUIS R. LITZAU STATE OF WASHINGTON REGISTERED PROFESSIONAL ENGINEER 3-31-21		Approved:	FULLY SPRINKLERED	Location ST. LOUIS VA MEDICAL CENTER - JEFFERSON BARRACKS, MO	Building Number 02
Revisions:		Date:						Issue Date 03/31/2022	Checked LRL/WM
								Drawn JGE/JBB	Drawing Number 02ET103
									309 OF 435

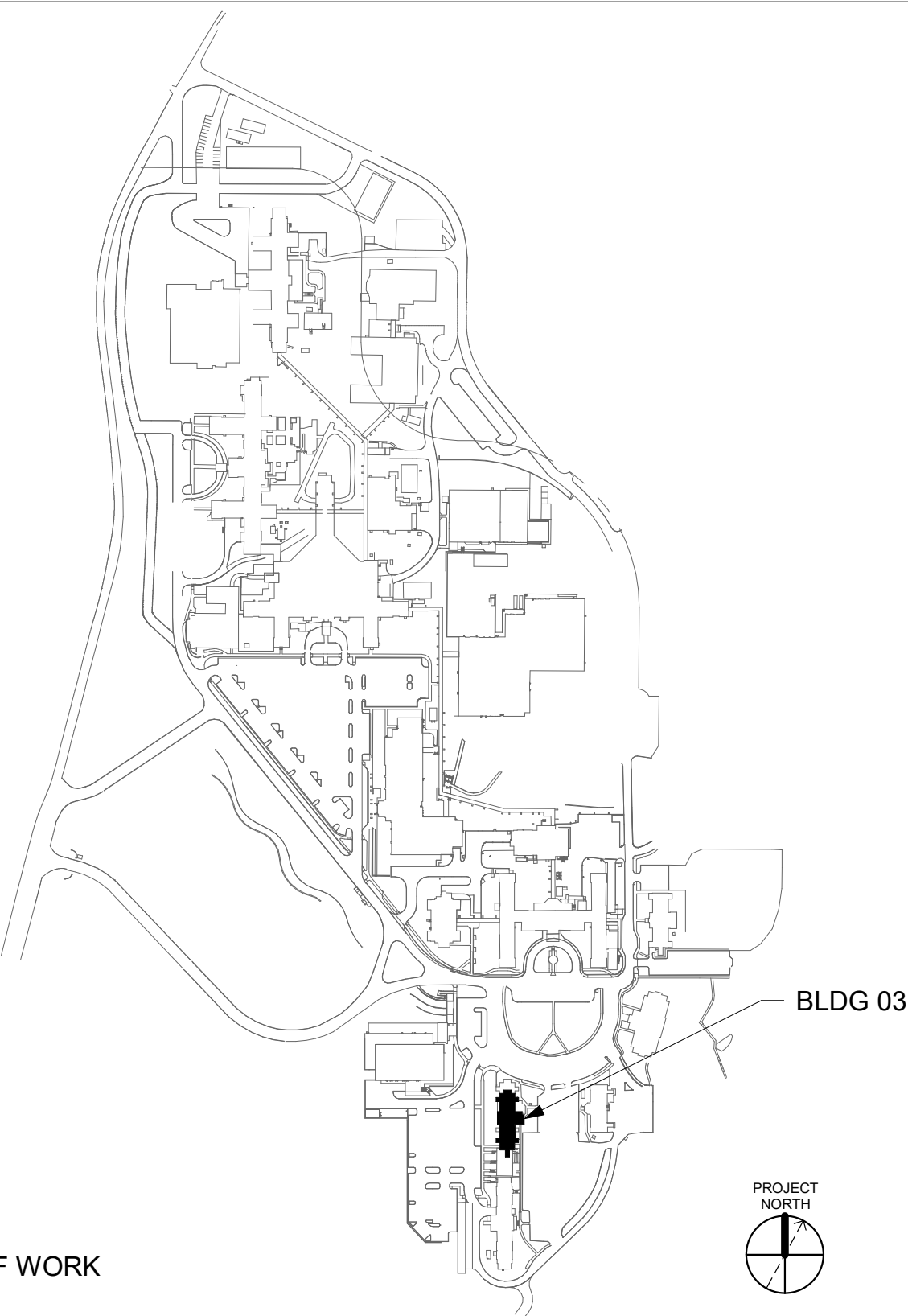
GENERAL NOTES

1. ALL EXISTING EQUIPMENT MAY NOT BE SHOWN FOR CLARITY. CONTRACTOR SHALL FIELD VERIFY ALL POWER AND SIGNAL DEVICES AND ASSOCIATED CIRCUITRY AS REQUIRED. ALL RACEWAYS AND CONDUCTORS ASSOCIATED WITH EQUIPMENT TO BE DEMOLISHED SHALL BE DEMOLISHED BACK TO THEIR SOURCE, UNLESS OTHERWISE NOTED.
2. PROTECT ALL EXISTING WORK FROM DAMAGE DURING CONSTRUCTION. ANY DAMAGED MATERIALS, SYSTEMS, COMPONENTS, FINISHES BE LIKE, SHALL BE REPAIRED OR REPLACED AT THE EXPENSE OF THE CONTRACTOR TO THE ACCEPTANCE OF THE OWNER.
3. SEAL ALL INTERIOR WALL AND CEILING PENETRATIONS TO MATCH EXISTING FIRE RATING OR NEW FIRE RATING, IF REQUIRED. COORDINATE WITH ARCHITECTURAL DRAWINGS AS REQUIRED.
4. ALL TELECOMMUNICATIONS CABLING CATEGORY 6 AND BELOW SHALL BE UPGRADED WITH CAT6A PORTS AND CABLE QUANTITIES INDICATED, UNLESS NOTED OTHERWISE.
5. TELECOMMUNICATIONS CABLES SHALL BE ROUTED IN EXISTING PATHWAY VACATED BY EXISTING CABLING. PROVIDE RACEWAYS TO EXTEND TO ASSOCIATED TR.
6. A TELECOMMUNICATIONS OUTLET UPGRADE SHALL INCLUDE, BUT IS NOT LIMITED TO REMOVING AND DISPOSING EXISTING DEVICES AND CABLES; PROVIDING ALL LABOR, MATERIALS, TOOLS, TEST INSTRUMENTS, AND CONSUMABLES REQUIRED FOR THE INSTALLATION, TERMINATION, TESTING, LABELING, AND CERTIFICATION OF A FULLY FUNCTIONAL CATEGORY 6A OUTLET WITH THE PORT QUANTITY INDICATED.
7. CONTRACTOR SHALL PROVIDE, INSTALL, AND TERMINATE HORIZONTAL CAT6A CABLING FROM EACH WAO (WORK AREA OUTLET) TO ITS RESPECTIVE TR.
8. PROVIDE PULL BOXES SIZED PER ANSI/TIA-569 AT 100-FT INTERVALS IN STRAIGHT CONDUIT RUNS, OR CONDUIT CONTAINING BENDS TOTALING MORE THAN 180 DEGREES.
9. PROVIDE CONDUITS AND SLEEVES AS REQUIRED FOR ROUTING AND INSTALLATION OF HORIZONTAL AND BACKBONE CABLING. PROVIDE FIRE-STOP MATERIALS TO SEAL IN AND AROUND CONDUIT PER CODE. REFER TO ARCHITECTURAL DRAWINGS FOR PARTITION TYPES AND WALL HEIGHTS.
10. OUTLET LOCATIONS ARE APPROXIMATE. DETERMINE EXACT LOCATIONS IN FIELD; DOCUMENT VARIANCES ON AS-BUILT DRAWINGS.
11. CONTRACTOR SHALL BE RESPONSIBLE FOR RELOCATING FURNITURE, INCLUDING TRANSPORTATION, FOR ALL WORK TO DESIRED VA STORAGE LOCATION. COORDINATE WITH VA AS REQUIRED.
12. ALL DATA CABLING SHALL BE SEGREGATED FROM OTHER SPECIAL SYSTEMS INCLUDING, BUT NOT LIMITED TO, SECURITY, FIRE ALARM, AND NURSE CALL SYSTEMS. WHEN ROUTED THROUGH CONDUIT, DATA CABLING SHALL HAVE ITS OWN RACEWAY. WHEN DATA CABLING IS ROUTED THROUGH A COMMON SPECIAL SYSTEMS CABLE TRAY, CABLING SHALL BE BUNDLED WITH LIKE SYSTEMS; ADDITIONALLY, CABLE TRAYS SHALL BE PROVIDED WITH TRAY DIVIDERS AS REQUIRED TO SEGREGATE SYSTEMS FROM ONE ANOTHER.
13. FIBER-OPTIC CABLING ROUTES AND ASSOCIATED RACEWAYS/ CABLE TRAY ARE DIAGRAMMATICAL. COORDINATE EXACT ROUTING WITH EXISTING CONDITIONS, ARCHITECTURAL FEATURES, MECHANICAL DUCTWORK, PIPING, EQUIPMENT, AND ANY OTHER OBSTRUCTIONS PRIOR TO INSTALLATION.

KEY NOTES

- 1 PROVIDE TELECOMMUNICATIONS OUTLET WITH PORT QUANTITY SHOWN TO REPLACE EXISTING TELECOMMUNICATIONS OUTLET; EXISTING OUTLET CONDUIT SHALL REMAIN AND BE UTILIZED TO FEED NEW CABLING; REFERENCE SHEET DETAIL '1' ON SHEET ET503 AND THE GENERAL NOTES ON THIS SHEET FOR ADDITIONAL INFORMATION. COORDINATE WITH VA FOR EXACT OUTLET PLACEMENT.
- 2 EXISTING WIRELESS ACCESS POINT TO BE RE-FED WITH CAT6A CABLING.
- 3 REMOVE AND REPLACE EXISTING CABLE TRAY IN THE AREAS SHOWN AS REQUIRED; IF CABLE TRAY IS NON-EXISTENT, PROVIDE CABLE TRAY AS INDICATED. REFERENCE DETAIL '8' ON SHEET ET503 AND TELECOMMUNICATIONS WAO AND CABLE TRAY SCHEDULE ON SHEET ET701. WHERE WALL EXTENDS TO CEILING, CABLE TRAY SHALL STOP AND TRANSITION TO CONDUIT SLEEVES (I) 4", MINIMUM WITH APPROPRIATE FIRE-PROOFING AND CAULKING TO PASS THROUGH WALL WHERE EXISTING CABLE TRAY AND/OR SLEEVES ARE DISCOVERED, EVALUATE CONDITION AND RACEWAY CAPACITY; IF CABLE TRAY AND/OR SLEEVES APPEAR TO BE REUSABLE, NOTIFY COR FOR POSSIBLE REUSE.
- 4 FIBER-OPTIC CABLE VERTICAL ROUTING - COORDINATE EXACT LOCATIONS PRIOR TO INSTALLATION. UTILIZE RIGID CONDUIT SLEEVES WITH FIRE-PROOFING AND ALL REQUIRED APPURTENANCES AS REQUIRED. REFERENCE DETAIL 2 ON SHEET ET503 FOR ADDITIONAL INFORMATION.
- 5 FIBER-OPTIC CABLE HORIZONTAL ROUTING SHALL BE CONCEALED ABOVE CEILING WHEREVER POSSIBLE UTILIZED CABLE TRAY AS APPLICABLE. PROVIDE CONDUIT SLEEVE WITH FIREPROOFING AS REQUIRED WHERE WALL PENETRATIONS ARE REQUIRED. REFERENCE DETAIL 2 ON SHEET ET503 FOR ADDITIONAL INFORMATION.

KEY PLAN



EXISTING SIDE-A FIBER-OPTIC BACKBONE
BUILDING ENTRY POINT (APPROXIMATE LOCATION).
ROUTE FIBER-OPTIC CABLES TO TRs AS INDICATED
ON COMMUNICATIONS DRAWINGS; REFERENCE
COMMUNICATIONS DRAWINGS FOR ALL FIBER-
OPTIC CABLING, RACEWAY TYPES,
SPECIFICATIONS, AND RATINGS. REFERENCE KEY
NOTES ON THIS SHEET REGARDING CABLE TRAY
AND VERTICAL/HORIZONTAL ROUTING FOR
ADDITIONAL FIBER BACKBONE CABLING
REQUIREMENTS.

**SIDE-B FIBER-OPTIC BACKBONE:
REFERENCE COMMUNICATION SHEETS
FOR ADDITIONAL INFORMATION
REGARDING HANDHOLE, CONDUIT,
BUILDING PENETRATIONS, FIBER-OPTIC
CABLING, AND RACEWAY INFORMATION**

DATA OUTLETS AND DEVICES IN THIS AREA SHALL BE SERVED FROM TELECOMMUNICATION ROOM B025.

**ALL BACKBONE CABLING ROUTES ARE
DIAGRAMMATICAL; CONTRACTOR SHALL ENSURE
A-SIDE AND B-SIDE ROUTING IS AS DIVERSE AS
PRACTICAL. REFERENCE COMMUNICATIONS DRAWINGS
FOR ALL REQUIRED FIBER-OPTIC CABLING.**

BLDG 03 - FLOOR 0 - TELECOMMUNICATIONS PLAN

 1/8" = 1'-0"

[illegible]

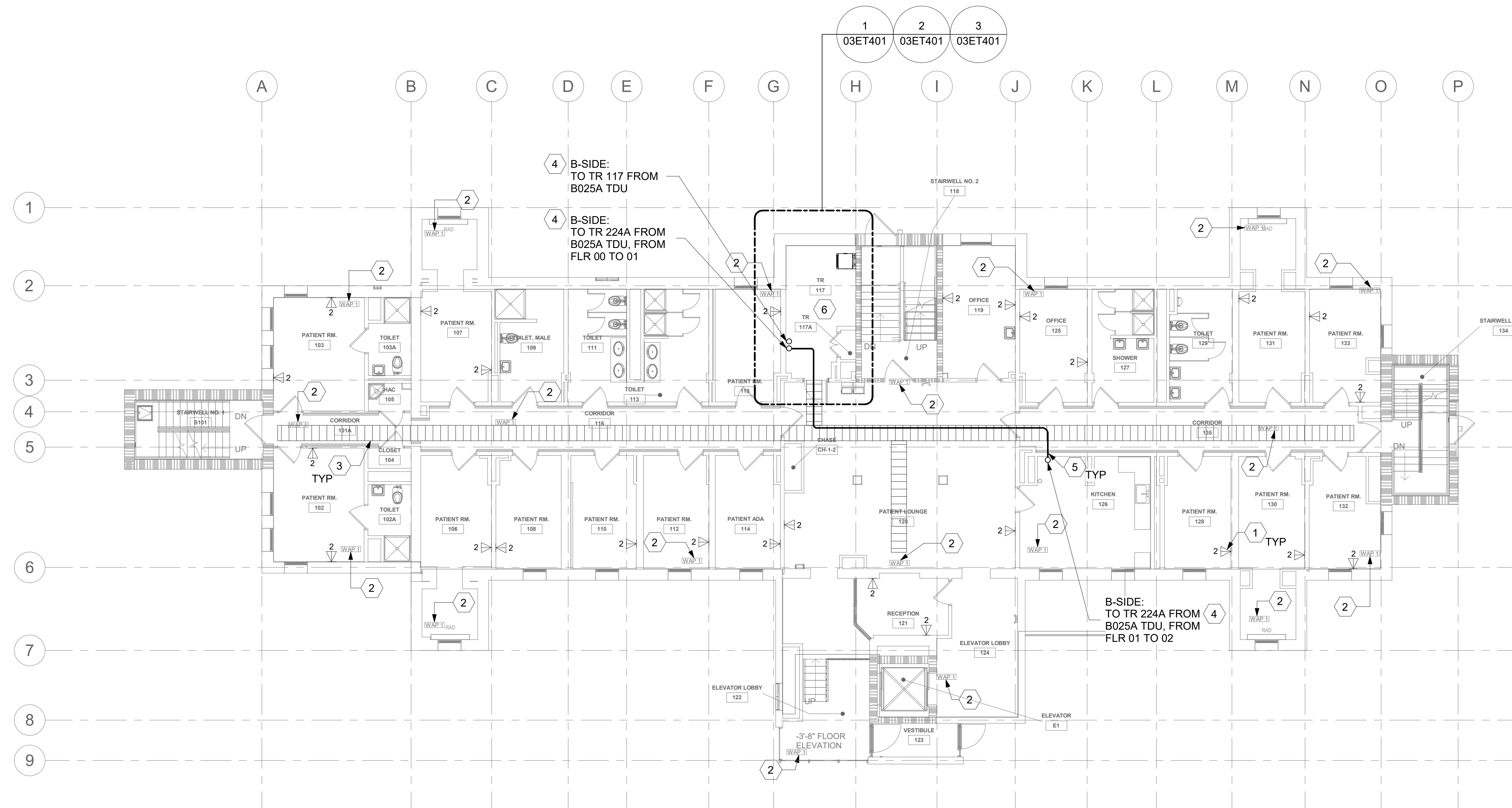
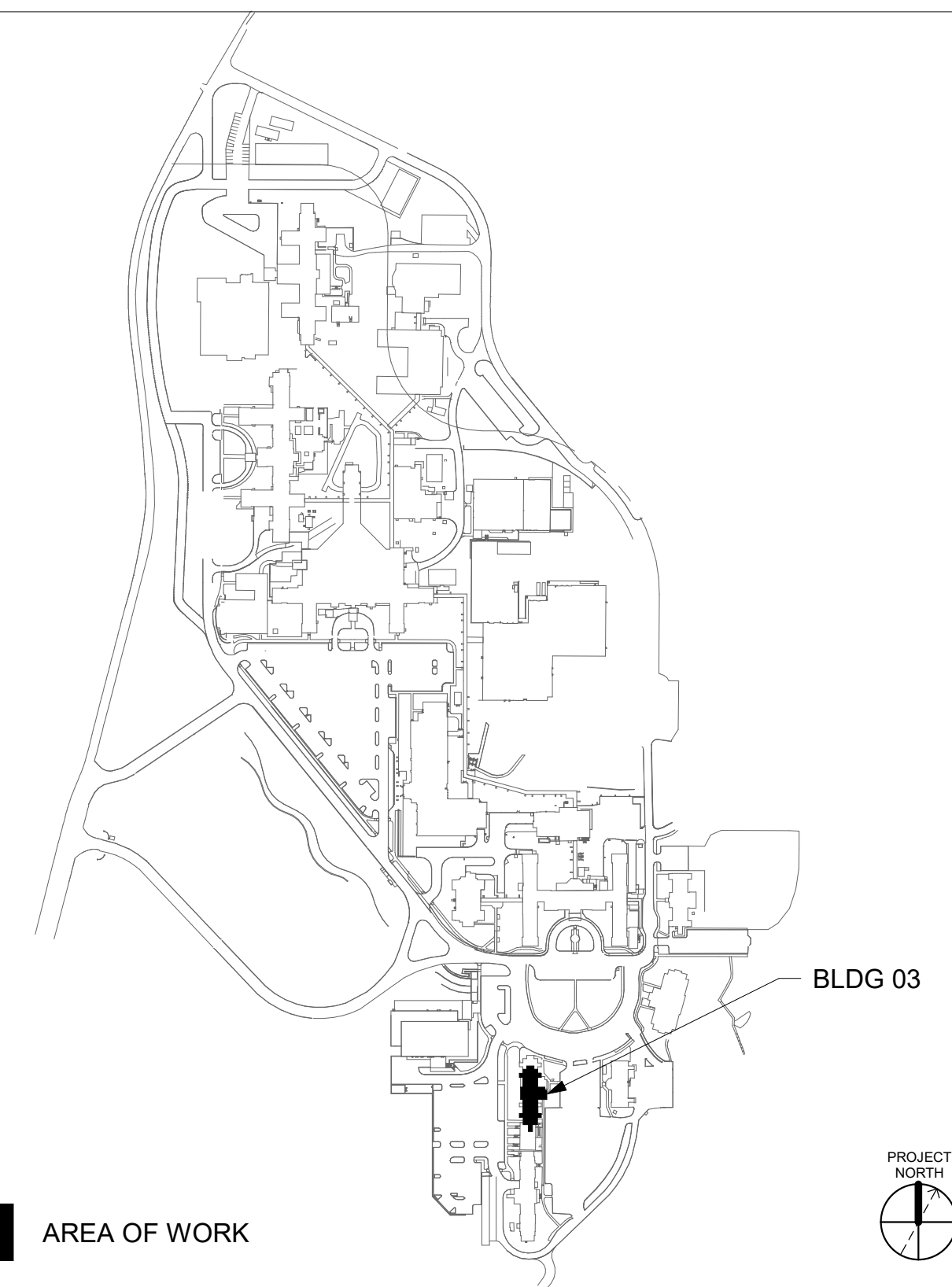
GENERAL NOTES

1. ALL EXISTING EQUIPMENT MAY NOT BE SHOWN FOR CLARITY. CONTRACTOR SHALL FIELD VERIFY ALL POWER AND SIGNAL DEVICES AND ASSOCIATED CIRCUITRY AS REQUIRED. ALL RACEWAYS AND CONDUCTORS ASSOCIATED WITH EQUIPMENT TO BE DEMOLISHED SHALL BE DEMOLISHED BACK TO THEIR SOURCE, UNLESS OTHERWISE NOTED.
2. PROTECT ALL EXISTING WORK FROM DAMAGE DURING CONSTRUCTION. ANY DAMAGED MATERIALS, SYSTEMS, COMPONENTS, FINISHES BE LIKE, SHALL BE REPAIRED OR REPLACED AT THE EXPENSE OF THE CONTRACTOR TO THE ACCEPTANCE OF THE OWNER.
3. SEAL ALL INTERIOR WALL AND CEILING PENETRATIONS TO MATCH EXISTING FIRE RATING OR NEW FIRE RATING, IF REQUIRED. COORDINATE WITH ARCHITECTURAL DRAWINGS AS REQUIRED.
4. ALL TELECOMMUNICATIONS CABLING CATEGORY 6 AND BELOW SHALL BE UPGRADED WITH CAT6A PORTS AND CABLE QUANTITIES INDICATED, UNLESS NOTED OTHERWISE.
5. TELECOMMUNICATIONS CABLES SHALL BE ROUTED IN EXISTING PATHWAY VACATED BY EXISTING CABLING. PROVIDE RACEWAYS TO EXTEND TO ASSOCIATED TR.
6. A TELECOMMUNICATIONS OUTLET UPGRADE SHALL INCLUDE, BUT IS NOT LIMITED TO REMOVING AND DISPOSING EXISTING DEVICES AND CABLES; PROVIDING ALL LABOR, MATERIALS, TOOLS, TEST INSTRUMENTS, AND CONSUMABLES REQUIRED FOR THE INSTALLATION, TERMINATION, TESTING, LABELING, AND CERTIFICATION OF A FULLY FUNCTIONAL CATEGORY 6A OUTLET WITH THE PORT QUANTITY INDICATED.
7. CONTRACTOR SHALL PROVIDE, INSTALL, AND TERMINATE HORIZONTAL CAT6A CABLING FROM EACH WAO (WORK AREA OUTLET) TO ITS RESPECTIVE TR.
8. PROVIDE PULL BOXES SIZED PER ANSI/TIA-569 AT 100-FT INTERVALS IN STRAIGHT CONDUIT RUNS, OR CONDUIT CONTAINING BENDS TOTALING MORE THAN 180 DEGREES.
9. PROVIDE CONDUITS AND SLEEVES AS REQUIRED FOR ROUTING AND INSTALLATION OF HORIZONTAL AND BACKBONE CABLING. PROVIDE FIRE-STOP MATERIALS TO SEAL IN AND AROUND CONDUIT PER CODE. REFER TO ARCHITECTURAL DRAWINGS FOR PARTITION TYPES AND WALL HEIGHTS.
10. OUTLET LOCATIONS ARE APPROXIMATE. DETERMINE EXACT LOCATIONS IN FIELD; DOCUMENT VARIANCES ON AS-BUILT DRAWINGS.
11. CONTRACTOR SHALL BE RESPONSIBLE FOR RELOCATING FURNITURE, INCLUDING TRANSPORTATION, FOR ALL WORK TO DESIRED VA STORAGE LOCATION. COORDINATE WITH VA AS REQUIRED.
12. ALL DATA CABLING SHALL BE SEGREGATED FROM OTHER SPECIAL SYSTEMS INCLUDING, BUT NOT LIMITED TO, SECURITY, FIRE ALARM, AND NURSE CALL SYSTEMS. WHEN ROUTED THROUGH CONDUIT, DATA CABLING SHALL HAVE ITS OWN RACEWAY. WHEN DATA CABLING IS ROUTED THROUGH A COMMON SPECIAL SYSTEMS CABLE TRAY, CABLING SHALL BE BUNDLED WITH LIKE SYSTEMS; ADDITIONALLY, CABLE TRAYS SHALL BE PROVIDED WITH TRAY DIVIDERS AS REQUIRED TO SEGREGATE SYSTEMS FROM ONE ANOTHER.
13. FIBER-OPTIC CABLING ROUTES AND ASSOCIATED RACEWAYS/ CABLE TRAY ARE DIAGRAMMATICAL. COORDINATE EXACT ROUTING WITH EXISTING CONDITIONS, ARCHITECTURAL FEATURES, MECHANICAL DUCTWORK, PIPING, EQUIPMENT, AND ANY OTHER OBSTRUCTIONS PRIOR TO INSTALLATION.

KEY NOTES

- 1 PROVIDE TELECOMMUNICATIONS OUTLET WITH PORT QUANTITY SHOWN TO REPLACE EXISTING TELECOMMUNICATIONS OUTLET; EXISTING OUTLET CONDUIT SHALL REMAIN AND BE UTILIZED TO FEED NEW CABLING; REFERENCE SHEET DETAIL '1' ON SHEET ET503 AND THE GENERAL NOTES ON THIS SHEET FOR ADDITIONAL INFORMATION. COORDINATE WITH VA FOR EXACT OUTLET PLACEMENT.
- 2 EXISTING WIRELESS ACCESS POINTS TO BE RE-FED WITH CAT6A CABLING.
- 3 REMOVE AND REPLACE EXISTING CABLE TRAY IN THE AREAS SHOWN AS REQUIRED; IF CABLE TRAY IS NON-EXISTENT, PROVIDE CABLE TRAY AS INDICATED. REFERENCE DETAIL '6' ON SHEET ET503 AND TELECOMMUNICATIONS WAO AND CABLE TRAY SCHEDULE ON SHEET ET701. WHERE WALL PENETRATIONS TO CEILING, CABLE TRAY SHALL STOP AND TRANSITION TO CONDUIT SLEEVES (2) 4" MINIMUM WITH APPROPRIATE FIRE-PROOFING AND CAULKING TO PASS THROUGH WALL WHERE EXISTING CABLE TRAY AND/OR SLEEVES ARE DISCOVERED. EVALUATE CONDITION AND RACEWAY CAPACITY; IF CABLE TRAY AND/OR SLEEVES APPEAR TO BE REUSABLE, NOTIFY COR FOR POSSIBLE REUSE.
- 4 FIBER-OPTIC CABLE VERTICAL ROUTING; COORDINATE EXACT LOCATIONS PRIOR TO INSTALLATION. UTILIZE RIGID CONDUIT SLEEVES WITH FIRE PROOFING AND ALL REQUIRED APPURTENANCES AS REQUIRED. REFERENCE DETAIL 2 ON SHEET ET503 FOR ADDITIONAL INFORMATION.
- 5 FIBER-OPTIC CABLE HORIZONTAL ROUTING SHALL BE CONCEALED ABOVE DROP CEILING WHEREVER POSSIBLE. UTILIZE CABLE TRAY AS APPLICABLE. PROVIDE CONDUIT SLEEVE WITH FIREPROOFING AS REQUIRED WHERE WALL PENETRATIONS ARE REQUIRED. REFERENCE DETAIL 2 ON SHEET ET503 FOR ADDITIONAL INFORMATION.
- 6 UTILIZE EXISTING PACS SECURITY HEAD END LOCATION FOR NEW OR RELOCATED PACS SECURITY TR EQUIPMENT. UPGRADE OR MODIFY EXISTING HEAD END LOCATION AS REQUIRED TO PROVIDE A COMPLETE AND FULLY FUNCTIONAL PACS SECURITY SYSTEM. PROVIDE CONDUIT, RACEWAYS, AND CABLEWAYS AS REQUIRED. COORDINATE WITH VA PRIOR TO CONSTRUCTION. CONTRACTOR SHALL VERIFY EXACT HEAD END LOCATION AS REQUIRED.

KEY PLAN



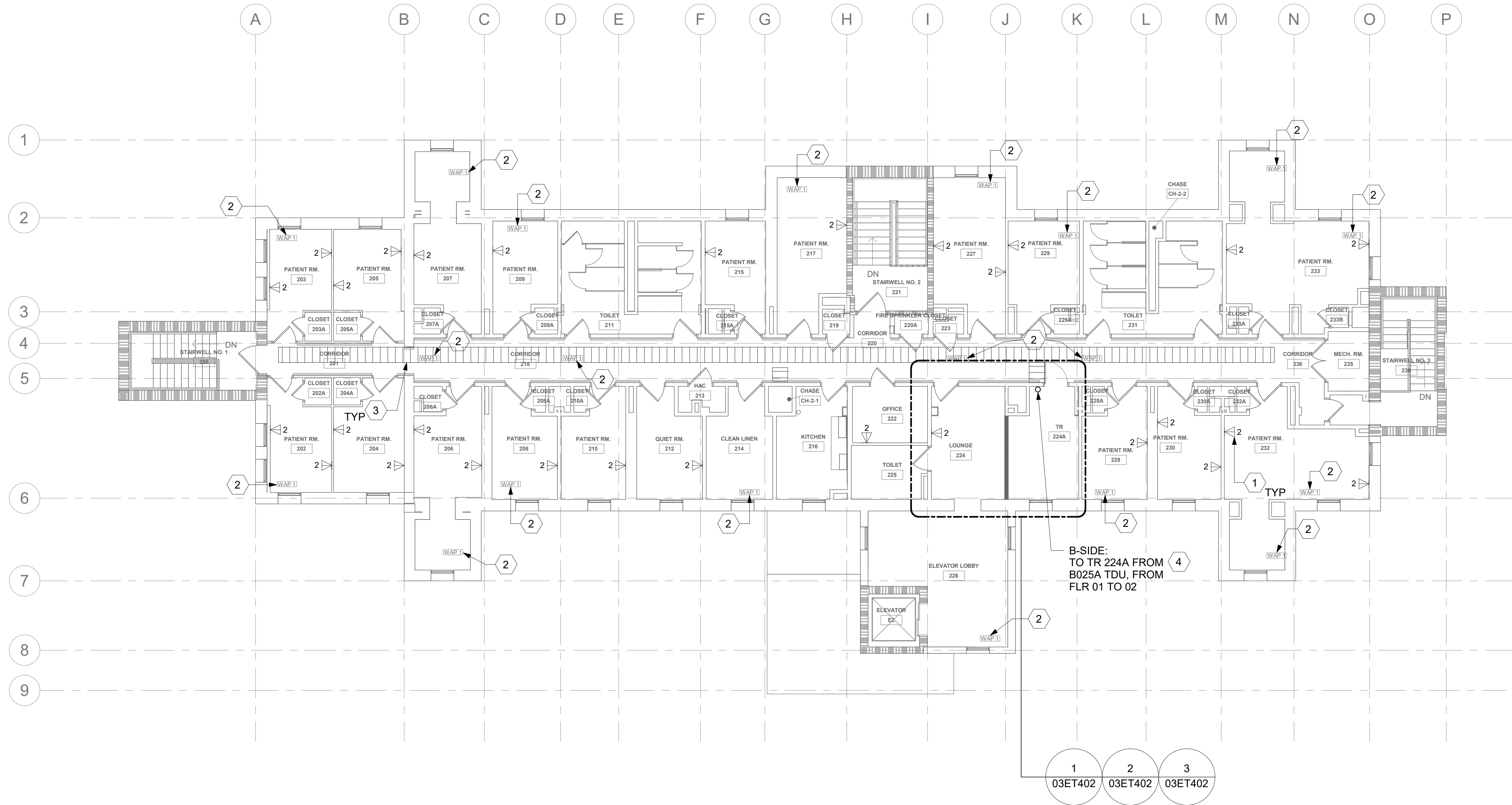
DATA OUTLETS AND DEVICES IN THIS AREA SHALL BE SERVED FROM TELECOMMUNICATION ROOM 117.

ALL BACKBONE CABLING ROUTES ARE DIAGRAMMATICAL; CONTRACTOR SHALL ENSURE A-SIDE AND B-SIDE ROUTING IS AS DIVERSE AS PRACTICAL. REFERENCE COMMUNICATIONS DRAWINGS FOR ALL REQUIRED FIBER-OPTIC CABLING.

[illegible]

- ## KEY NOTES

- ## KEY PLAN



**ALL BACKBONE CABLING ROUTES ARE
DIAGRAMMATICAL; CONTRACTOR SHALL ENSURE
A-SIDE AND B-SIDE ROUTING IS AS DIVERSE AS
PRACTICAL. REFERENCE COMMUNICATIONS
DRAWINGS FOR ALL REQUIRED FIBER-OPTIC
CABLING.**

Drawing Number
03ET102
312 OF 435

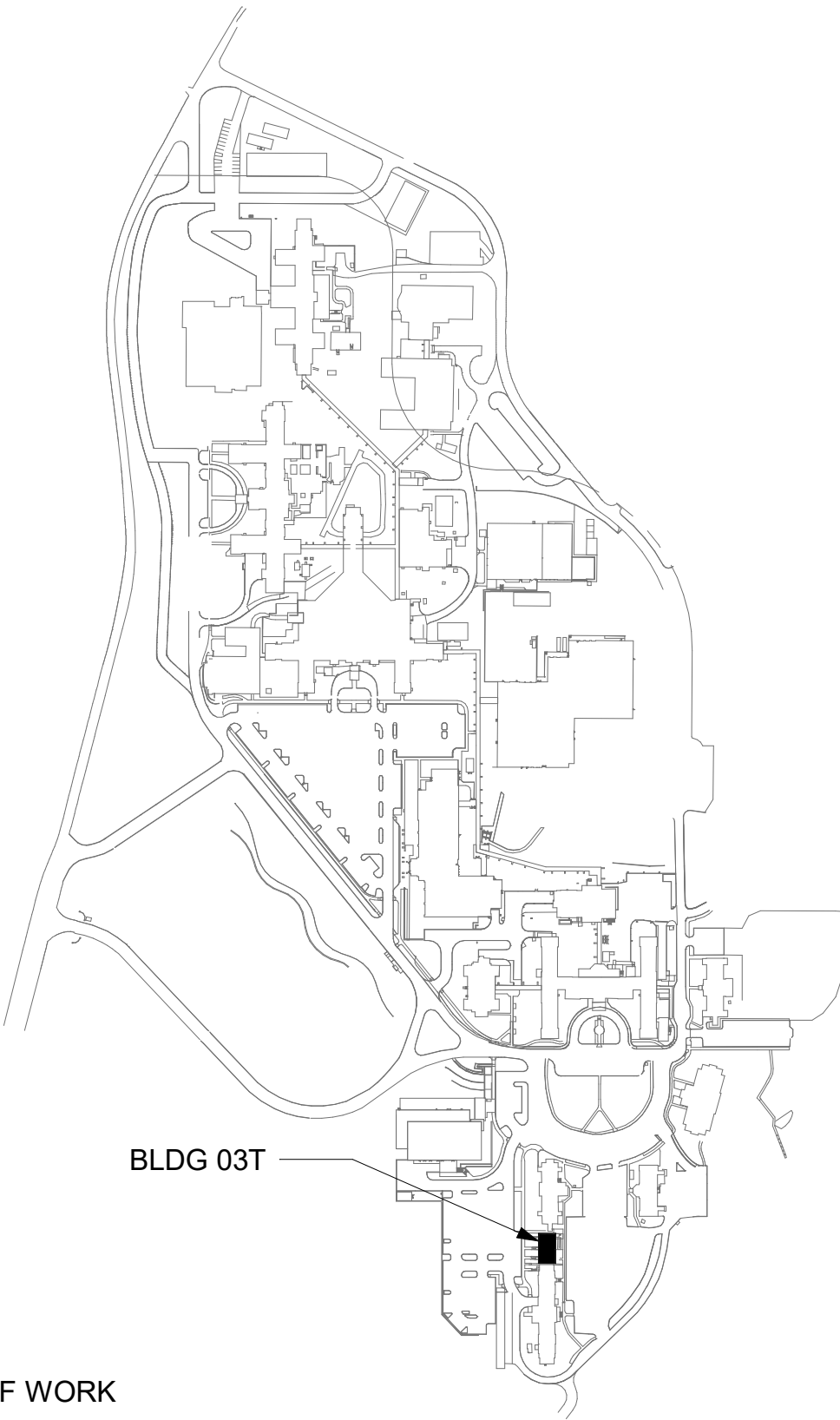
GENERAL NOTES

- ALL EXISTING EQUIPMENT MAY NOT BE SHOWN FOR CLARITY. CONTRACTOR SHALL FIELD VERIFY ALL POWER, LIGHTING AND ASSOCIATED CIRCUITRY AS REQUIRED. ALL RACEWAYS AND CONDUCTORS ASSOCIATED WITH EQUIPMENT TO BE DEMOLISHED SHALL BE DEMOLISHED BACK TO THEIR SOURCE, UNLESS OTHERWISE NOTED.
- PROTECT ALL EXISTING WORK FROM DAMAGE DURING CONSTRUCTION. ANY DAMAGED MATERIALS, SYSTEMS, COMPONENTS, FINISHES BE LIKE, SHALL BE REPAIRED OR REPLACED AT THE EXPENSE OF THE CONTRACTOR TO THE ACCEPTANCE OF THE OWNER.
- SEAL ALL INTERIOR WALL AND CEILING PENETRATIONS TO MATCH EXISTING FIRE RATING OR NEW FIRE RATING, IF REQUIRED. COORDINATE WITH ARCHITECTURAL DRAWINGS AS REQUIRED.
- ALL TELECOMMUNICATIONS CABLING CATEGORY 6 AND BELOW SHALL BE UPGRADED WITH CAT6A PORTS AND CABLE QUANTITIES INDICATED, UNLESS NOTED OTHERWISE.
- TELECOMMUNICATIONS CABLES SHALL BE ROUTED IN EXISTING PATHWAY VACATED BY EXISTING CABLING. PROVIDE RACEWAYS TO EXTEND TO ASSOCIATED TR.
- A TELECOMMUNICATIONS OUTLET UPGRADE SHALL INCLUDE, BUT IS NOT LIMITED TO REMOVING AND DISPOSING EXISTING DEVICES AND CABLES; PROVIDING ALL LABOR, MATERIALS, TOOLS, TEST INSTRUMENTS, AND CONSUMABLES REQUIRED FOR THE INSTALLATION, TERMINATION, TESTING, LABELING, AND CERTIFICATION OF A FULLY FUNCTIONAL CATEGORY 6A OUTLET WITH THE PORT QUANTITY INDICATED.
- CONTRACTOR SHALL PROVIDE, INSTALL, AND TERMINATE HORIZONTAL CAT6A CABLING FROM EACH WAO (WORK AREA OUTLET) TO ITS RESPECTIVE TR.
- PROVIDE PULL BOXES SIZED PER ANSI/TIA-569 AT 100-FT INTERVALS IN STRAIGHT CONDUIT RUNS, OR CONDUIT CONTAINING BENDS TOTALING MORE THAN 180 DEGREES.
- PROVIDE CONDUITS AND SLEEVES AS REQUIRED FOR ROUTING AND INSTALLATION OF HORIZONTAL AND BACKBONE CABLING. PROVIDE FIRE-STOP MATERIALS TO SEAL IN AND AROUND CONDUIT PER CODE. REFER TO ARCHITECTURAL DRAWINGS FOR PARTITION TYPES AND WALL HEIGHTS.
- OUTLET LOCATIONS ARE APPROXIMATE. DETERMINE EXACT LOCATIONS IN FIELD; DOCUMENT VARIANCES ON AS-BUILT DRAWINGS.
- CONTRACTOR SHALL BE RESPONSIBLE FOR RELOCATING FURNITURE, INCLUDING TRANSPORTATION, FOR ALL WORK TO DESIRED VA STORAGE LOCATION. COORDINATE WITH VA AS REQUIRED.
- ALL DATA CABLING SHALL BE SEGREGATED FROM OTHER SPECIAL SYSTEMS INCLUDING, BUT NOT LIMITED TO, SECURITY, FIRE ALARM, AND NURSE CALL SYSTEMS. WHEN ROUTED THROUGH CONDUIT, DATA CABLING SHALL HAVE ITS OWN RACEWAY. WHEN DATA CABLING IS ROUTED THROUGH A COMMON SPECIAL SYSTEMS CABLE TRAY, CABLING SHALL BE BUNDLED WITH LIKE SYSTEMS; ADDITIONALLY, CABLE TRAYS SHALL BE PROVIDED WITH TRAY DIVIDERS AS REQUIRED TO SEGREGATE SYSTEMS FROM ONE ANOTHER.
- FIBER-OPTIC CABLING ROUTES AND ASSOCIATED RACEWAYS/ CABLE TRAY ARE DIAGRAMMATICAL. COORDINATE EXACT ROUTING WITH EXISTING CONDITIONS, ARCHITECTURAL FEATURES, MECHANICAL DUCTWORK, PIPING, EQUIPMENT, AND ANY OTHER OBSTRUCTIONS PRIOR TO INSTALLATION.

KEY NOTES

- PROVIDE TELECOMMUNICATIONS OUTLET WITH PORT QUANTITY SHOWN TO REPLACE EXISTING TELECOMMUNICATIONS OUTLET; EXISTING OUTLET CONDUIT SHALL REMAIN AND BE UTILIZED TO FEED NEW CABLING; REFERENCE SHEET DETAIL "1" ON SHEET ET503 AND THE GENERAL NOTES ON THIS SHEET FOR ADDITIONAL INFORMATION. COORDINATE WITH VA FOR EXACT OUTLET PLACEMENT.
- EXISTING WIRELESS ACCESS POINT TO BE RE-FED WITH CAT6A CABLING.
- FIBER-OPTIC CABLE HORIZONTAL ROUTING SHALL BE CONCEALED ABOVE DROP CEILING WHEREVER POSSIBLE. UTILIZE CABLE TRAY AS APPLICABLE. PROVIDE CONDUIT SLEEVE WITH FIREPROOFING AS REQUIRED WHERE WALL PENETRATIONS ARE REQUIRED. REFERENCE DETAIL 2 ON SHEET ET503 FOR ADDITIONAL INFORMATION.
- UTILIZE EXISTING PACS SECURITY HEAD END LOCATION FOR NEW OR RELOCATED PACS SECURITY TR EQUIPMENT. UPGRADE OR MODIFY EXISTING HEAD END LOCATION AS REQUIRED TO PROVIDE A COMPLETE AND FULLY FUNCTIONAL TR PACS SECURITY SYSTEM. PROVIDE EQUIPMENT, RACEWAYS, AND CABLING AS REQUIRED. COORDINATE WITH VA PRIOR TO CONSTRUCTION. CONTRACTOR SHALL VERIFY EXACT HEAD END LOCATION AS REQUIRED.

KEY PLAN



1 BLDG 03T - FLOOR 1 - TELECOMMUNICATIONS PLAN
1/4" = 1'-0"



DATA OUTLETS AND DEVICES IN THIS AREA SHALL BE SERVED FROM TELECOMMUNICATION ROOM 118.

ALL BACKBONE CABLING ROUTES ARE DIAGRAMMATICAL; CONTRACTOR SHALL ENSURE A-SIDE AND B-SIDE ROUTING IS AS DIVERSE AS PRACTICAL. REFERENCE COMMUNICATIONS DRAWINGS FOR ALL REQUIRED FIBER-OPTIC CABLING.

Revisions:	Date:

CONSULTANT

ARCHITECT/ENGINEER OF RECORD
A/E: SPEES DESIGN BUILD 625 1ST AVE, STE 301 SEATTLE, WA 98104 (206) 590-2118 RAY SPEES

STAMP

Office of Construction and Facilities Management
U.S. Department of Veterans Affairs

Drawing Title
BLDG 03T - FLOOR 1 - TELECOMMUNICATIONS PLAN
Approved:

Phase
CONSTRUCTION DOCUMENTS
FULLY SPRINKLERED

Project Title
EHRM INFRASTRUCTURE UPGRADES
Location
ST. LOUIS VA MEDICAL CENTER - JEFFERSON BARRACKS, MO
Issue Date
03/31/2022
Checked
LRL/WM
Drawn
JGE/JBB

Project Number
657-21-701JB
Building Number
03T
Drawing Number
03TET101
313 OF 435

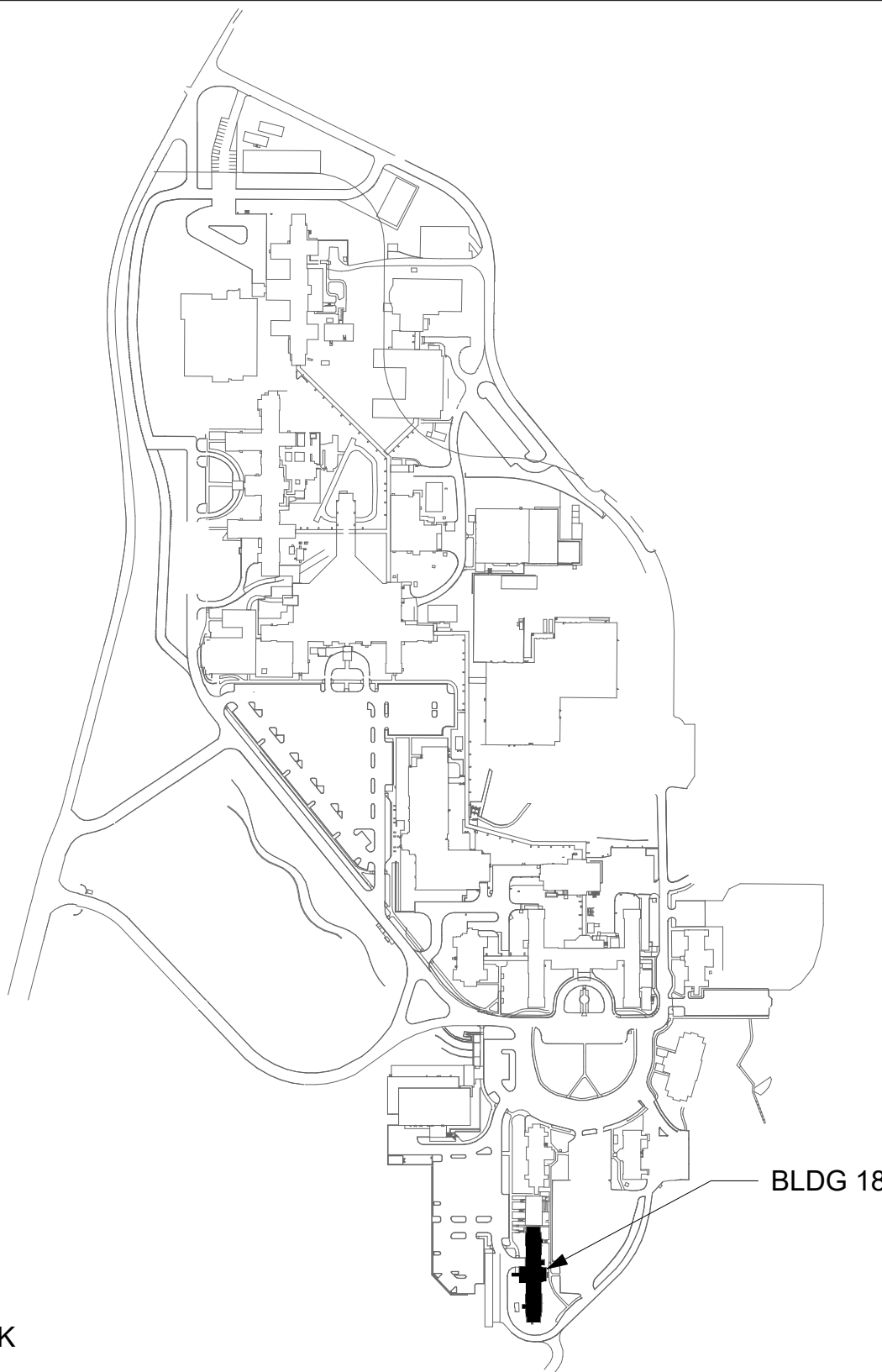
GENERAL NOTES

- ALL EXISTING EQUIPMENT MAY NOT BE SHOWN FOR CLARITY. CONTRACTOR SHALL FIELD VERIFY ALL POWER AND SIGNAL DEVICES AND ASSOCIATED CIRCUITRY AS REQUIRED. ALL RACEWAYS AND CONDUCTORS ASSOCIATED WITH EQUIPMENT TO BE DEMOLISHED SHALL BE DEMOLISHED BACK TO THEIR SOURCE, UNLESS OTHERWISE NOTED.
- PROTECT ALL EXISTING WORK FROM DAMAGE DURING CONSTRUCTION. ANY DAMAGED MATERIALS, SYSTEMS, COMPONENTS, FINISHES BE LIKE, SHALL BE REPAIRED OR REPLACED AT THE EXPENSE OF THE CONTRACTOR TO THE ACCEPTANCE OF THE OWNER.
- SEAL ALL INTERIOR WALL AND CEILING PENETRATIONS TO MATCH EXISTING FIRE RATING OR NEW FIRE RATING, IF REQUIRED. COORDINATE WITH ARCHITECTURAL DRAWINGS AS REQUIRED.
- ALL TELECOMMUNICATIONS CABLING CATEGORY 6 AND BELOW SHALL BE UPGRADED WITH CAT6A PORTS AND CABLE QUANTITIES INDICATED, UNLESS NOTED OTHERWISE.
- TELECOMMUNICATIONS CABLES SHALL BE ROUTED IN EXISTING PATHWAY VACATED BY EXISTING CABLING AS CONDUIT FILL ALLOWS. PROVIDE ADDITIONAL RACEWAYS TO EXTEND TO ASSOCIATED TR AS REQUIRED.
- A TELECOMMUNICATIONS OUTLET UPGRADE SHALL INCLUDE, BUT IS NOT LIMITED TO REMOVING AND DISPOSING EXISTING DEVICES AND CABLES; PROVIDING ALL LABOR, MATERIALS, TOOLS, TEST INSTRUMENTS, AND CONSUMABLES REQUIRED FOR THE INSTALLATION, TERMINATION, TESTING, LABELING, AND CERTIFICATION OF A FULLY FUNCTIONAL CATEGORY 6A OUTLET WITH THE PORT QUANTITY INDICATED.
- CONTRACTOR SHALL PROVIDE, INSTALL, AND TERMINATE HORIZONTAL CAT6A CABLING FROM EACH WAO (WORK AREA OUTLET) TO ITS RESPECTIVE TR.
- PROVIDE PULL BOXES SIZED PER ANSI/TIA-569 AT 100-FT INTERVALS IN STRAIGHT CONDUIT RUNS, OR CONDUIT CONTAINING BENDS TOTALING MORE THAN 180 DEGREES.
- PROVIDE CONDUITS AND SLEEVES AS REQUIRED FOR ROUTING AND INSTALLATION OF HORIZONTAL AND BACKBONE CABLING. PROVIDE FIRE-STOP MATERIALS TO SEAL IN AND AROUND CONDUIT PER CODE. REFER TO ARCHITECTURAL DRAWINGS FOR PARTITION TYPES AND WALL HEIGHTS.
- OUTLET LOCATIONS ARE APPROXIMATE. DETERMINE EXACT LOCATIONS IF FIELD; DOCUMENT VARIANCES ON AS-BUILT DRAWINGS.
- CONTRACTOR SHALL BE RESPONSIBLE FOR RELOCATING FURNITURE, INCLUDING TRANSPORTATION, FOR ALL WORK TO DESIRED VA STORAGE LOCATION. COORDINATE WITH VA AS REQUIRED.
- ALL DATA CABLING SHALL BE SEGREGATED FROM OTHER SPECIAL SYSTEMS INCLUDING, BUT NOT LIMITED TO, SECURITY, FIRE ALARM, AND NURSE CALL SYSTEMS. WHEN ROUTED THROUGH CONDUIT, DATA CABLING SHALL HAVE ITS OWN RACEWAY. WHEN DATA CABLING IS ROUTED THROUGH A COMMON SPECIAL SYSTEMS CABLE TRAY, CABLING SHALL BE BUNDLED WITH LIKE SYSTEMS; ADDITIONALLY, CABLE TRAYS SHALL BE PROVIDED WITH TRAY DIVIDERS AS REQUIRED TO SEGREGATE SYSTEMS FROM ONE ANOTHER.
- FIBER-OPTIC CABLING ROUTES AND ASSOCIATED RACEWAYS/ CABLE TRAY ARE DIAGRAMMATICAL. COORDINATE EXACT ROUTING CONDITIONS, ARCHITECTURAL FEATURES, MECHANICAL DUCTWORK, PIPING, EQUIPMENT, AND ANY OTHER OBSTRUCTIONS PRIOR TO INSTALLATION.

KEY NOTES

- PROVIDE TELECOMMUNICATIONS OUTLET WITH PORT QUANTITY SHOWN TO REPLACE EXISTING TELECOMMUNICATIONS OUTLET; EXISTING OUTLET CONDUIT SHALL REMAIN AND BE UTILIZED TO FEED NEW CABLING; REFERENCE SHEET DETAIL '1' ON SHEET ET503 AND THE GENERAL NOTES ON THIS SHEET FOR ADDITIONAL INFORMATION. COORDINATE WITH VA FOR EXACT OUTLET PLACEMENT.
- EXISTING WIRELESS ACCESS POINT TO BE RE-FED WITH CAT6A CABLING.
- REMOVE AND REPLACE EXISTING CABLE TRAY IN THE AREAS SHOWN AS REQUIRED; IF CABLE TRAY IS NON-EXISTENT, PROVIDE CABLE TRAY AS INDICATED. REFERENCE DETAIL '6' ON SHEET ET503 AND TELECOMMUNICATIONS WAO AND CABLE TRAY SCHEDULE ON SHEET ET701. WHERE WALL EXTENDS TO CEILING, CABLE TRAY SHALL STOP AND TRANSITION TO CONDUIT SLEEVES ((2) 4", MINIMUM) WITH APPROPRIATE FIRE-PROOFING AND CAULKING TO PASS THROUGH WALL. WHERE EXISTING CABLE TRAY AND/OR SLEEVES ARE DISCOVERED, EVALUATE CONDITION AND RACEWAY CAPACITY; IF CABLE TRAY AND/OR SLEEVES APPEAR TO BE REUSABLE, NOTIFY COR FOR POSSIBLE REUSE
- FIBER-OPTIC CABLE VERTICAL ROUTING; COORDINATE EXACT LOCATIONS PRIOR TO INSTALLATION. UTILIZE RIGID CONDUIT SLEEVES WITH FIRE PROOFING AND ALL REQUIRED APPURTENANCES AS REQUIRED. REFERENCE DETAIL 2 ON SHEET ET503 FOR ADDITIONAL INFORMATION.
- FIBER-OPTIC CABLE HORIZONTAL ROUTING SHALL BE CONCEALED ABOVE DROP CEILING WHEREVER POSSIBLE. UTILIZE CABLE TRAY AS APPLICABLE. PROVIDE CONDUIT SLEEVE WITH FIREPROOFING AS REQUIRED WHERE WALL PENETRATIONS ARE REQUIRED. REFERENCE DETAIL 2 ON SHEET ET503 FOR ADDITIONAL INFORMATION.

KEY PLAN



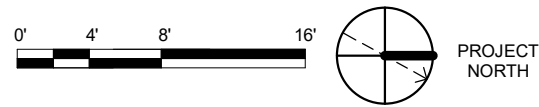
DATA OUTLETS AND DEVICES IN THIS AREA SHALL BE SERVED FROM TELECOMMUNICATION ROOM 11A.

ALL BACKBONE CABLING ROUTES ARE DIAGRAMMATICAL; CONTRACTOR SHALL ENSURE A-SIDE AND B-SIDE ROUTING IS AS DIVERSE AS PRACTICAL. REFERENCE COMMUNICATIONS DRAWINGS FOR ALL REQUIRED FIBER-OPTIC CABLING.

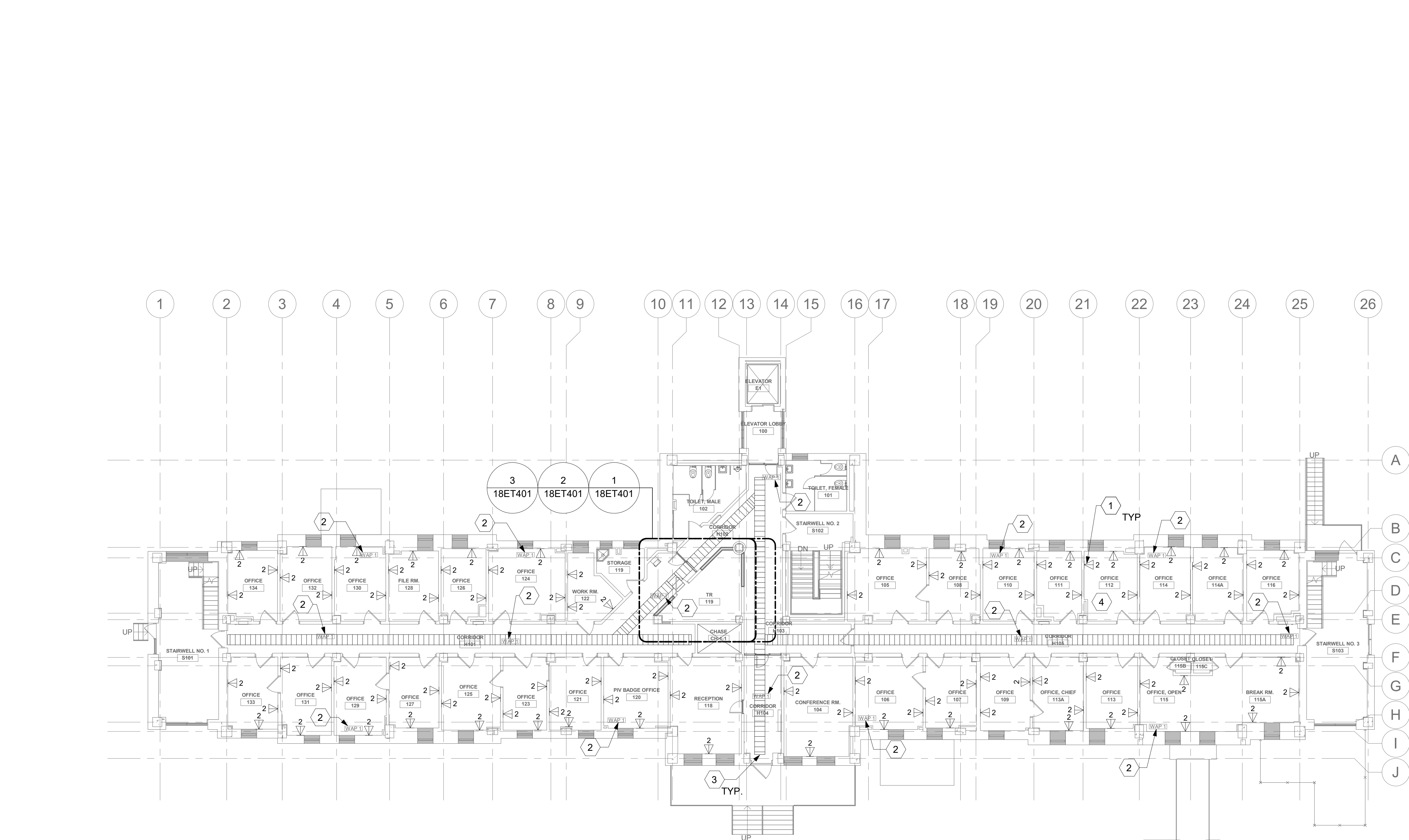
EXISTING SIDE-A FIBER-OPTIC BACKBONE BUILDING ENTRY POINT (APPROXIMATE LOCATION). ROUTE FIBER-OPTIC CABLES TO TRs AS INDICATED ON COMMUNICATIONS DRAWINGS; REFERENCE COMMUNICATIONS DRAWINGS FOR ALL FIBER-OPTIC CABLING, RACEWAY TYPES, SPECIFICATIONS, AND RATINGS. REFERENCE KEY NOTES ON THIS SHEET REGARDING CABLE TRAY AND VERTICAL/HORIZONTAL ROUTING FOR ADDITIONAL FIBER BACKBONE CABLING REQUIREMENTS.

SIDE-B FIBER-OPTIC BACKBONE: REFERENCE COMMUNICATION SHEETS FOR ADDITIONAL INFORMATION REGARDING HANDHOLE, CONDUIT, BUILDING PENETRATIONS, FIBER-OPTIC CABLING, AND RACEWAY INFORMATION

1 BLDG 18 - FLOOR 0 - TELECOMMUNICATIONS PLAN
3/32" = 1'-0"



		CONSULTANT	ARCHITECT/ENGINEER OF RECORD	STAMP	Office of Construction and Facilities Management	Drawing Title	Phase	Project Title	Project Number
			A/E: SPEES DESIGN BUILD 625 1ST AVE, STE 301 SEATTLE, WA 98104 (206) 590-2118 RAY SPEES		VA U.S. Department of Veterans Affairs	BLDG 18 - FLOOR 0 - TELECOMMUNICATIONS PLAN	CONSTRUCTION DOCUMENTS	EHRM INFRASTRUCTURE UPGRADES	657-21-701JB
						Approved:	NON SPRINKLERED	Location ST. LOUIS VA MEDICAL CENTER - JEFFERSON BARRACKS, MO	Building Number 18
								Issue Date 03/31/2022	Checked LRL/WM
								Drawn JGE/JBB	Drawing Number 18ET100
									314 OF 435
Revisions:		Date:							



DATA OUTLETS AND DEVICES IN THIS AREA SHALL BE SERVED FROM TELECOMMUNICATION ROOM 119.

ALL BACKBONE CABLING ROUTES ARE DIAGRAMMATICAL; CONTRACTOR SHALL ENSURE A-SIDE AND B-SIDE ROUTING IS AS DIVERSE AS PRACTICAL. REFERENCE COMMUNICATIONS DRAWINGS FOR ALL REQUIRED FIBER-OPTIC CABLING.

1 BLDG 18 - FLOOR 1 - TELECOMMUNICATIONS PLAN
3/32" = 1'-0"

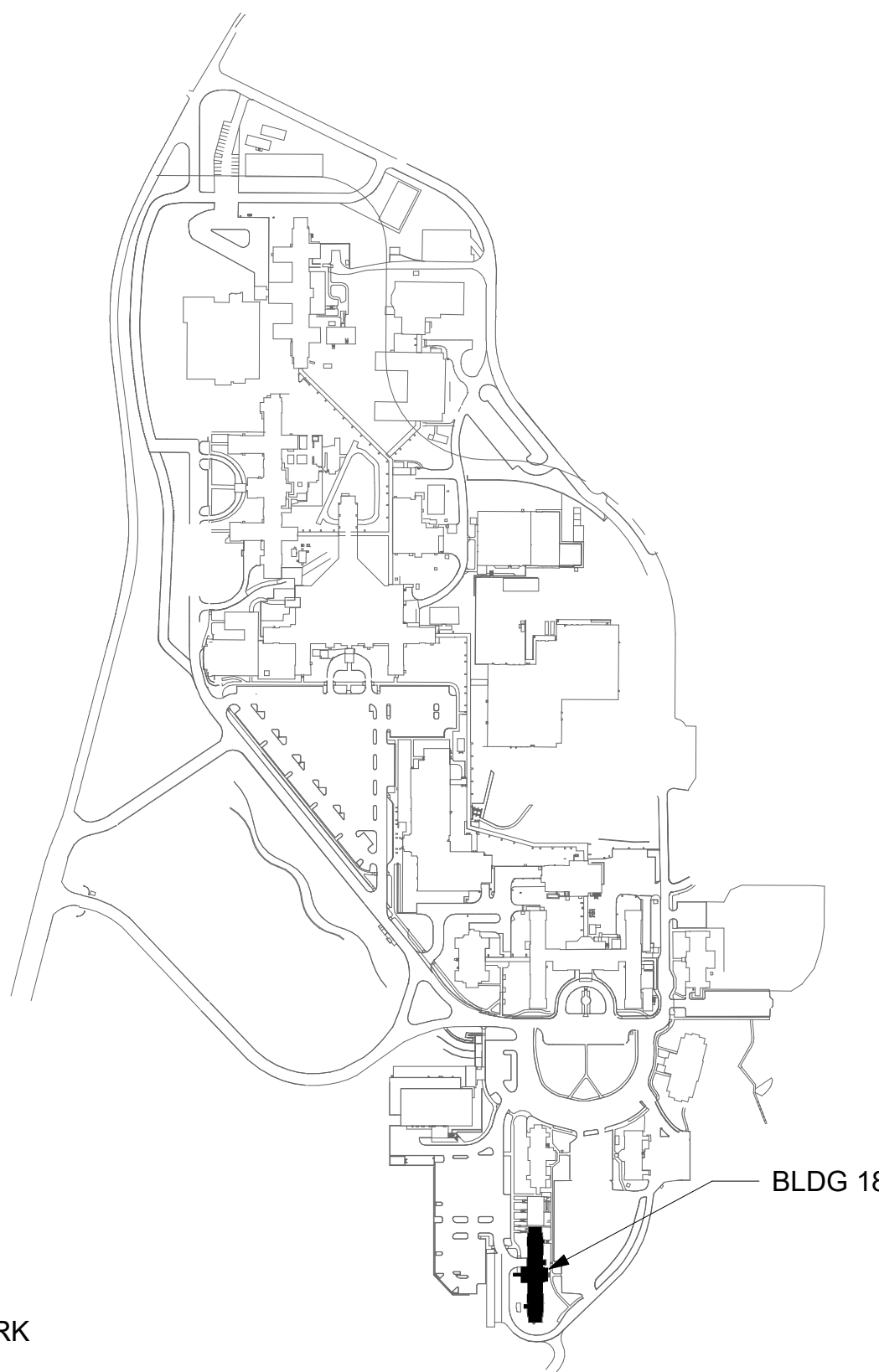
GENERAL NOTES




- ALL EXISTING EQUIPMENT MAY NOT BE SHOWN FOR CLARITY. CONTRACTOR SHALL FIELD VERIFY ALL POWER AND SIGNAL DEVICES AND ASSOCIATED CIRCUITRY AS REQUIRED. ALL RACEWAYS AND CONDUCTORS ASSOCIATED WITH EQUIPMENT TO BE DEMOLISHED SHALL BE DEMOLISHED BACK TO THEIR SOURCE, UNLESS OTHERWISE NOTED.
- PROTECT ALL EXISTING WORK FROM DAMAGE DURING CONSTRUCTION. ANY DAMAGED MATERIALS, SYSTEMS, COMPONENTS, FINISHES BE LIKE, SHALL BE REPAIRED OR REPLACED AT THE EXPENSE OF THE CONTRACTOR TO THE ACCEPTANCE OF THE OWNER.
- SEAL ALL INTERIOR WALL AND CEILING PENETRATIONS TO MATCH EXISTING FIRE RATING OR NEW FIRE RATING, IF REQUIRED. COORDINATE WITH ARCHITECTURAL DRAWINGS AS REQUIRED.
- ALL TELECOMMUNICATIONS CABLING CATEGORY 6 AND BELOW SHALL BE UPGRADED WITH CAT6A PORTS AND CABLE QUANTITIES INDICATED, UNLESS NOTED OTHERWISE.
- TELECOMMUNICATIONS CABLES SHALL BE ROUTED IN EXISTING PATHWAY VACATED BY EXISTING CABLING AS CONDUIT FILL ALLOWS. PROVIDE ADDITIONAL RACEWAYS TO EXTEND TO ASSOCIATED TR AS REQUIRED.
- A TELECOMMUNICATIONS OUTLET UPGRADE SHALL INCLUDE, BUT IS NOT LIMITED TO REMOVING AND DISPOSING EXISTING DEVICES AND CABLES; PROVIDING ALL LABOR, MATERIALS, TOOLS, TEST INSTRUMENTS, AND CONSUMABLES REQUIRED FOR THE INSTALLATION, TERMINATION, TESTING, LABELING, AND CERTIFICATION OF A FULLY FUNCTIONAL CATEGORY 6A OUTLET WITH THE PORT QUANTITY INDICATED.
- CONTRACTOR SHALL PROVIDE, INSTALL, AND TERMINATE HORIZONTAL CAT6A CABLING FROM EACH WAO (WORK AREA OUTLET) TO ITS RESPECTIVE TR.
- PROVIDE PULL BOXES SIZED PER ANSI/TIA-569 AT 100-FT INTERVALS IN STRAIGHT CONDUIT RUNS, OR CONDUIT CONTAINING BENDS TOTALING MORE THAN 180 DEGREES.
- PROVIDE CONDUITS AND SLEEVES AS REQUIRED FOR ROUTING AND INSTALLATION OF HORIZONTAL AND BACKBONE CABLING. PROVIDE FIRE-STOP MATERIALS TO SEAL IN AND AROUND CONDUIT PER CODE. REFER TO ARCHITECTURAL DRAWINGS FOR PARTITION TYPES AND WALL HEIGHTS.
- OUTLET LOCATIONS ARE APPROXIMATE. DETERMINE EXACT LOCATIONS IF FIELD; DOCUMENT VARIANCES ON AS-BUILT DRAWINGS.
- CONTRACTOR SHALL BE RESPONSIBLE FOR RELOCATING FURNITURE, INCLUDING TRANSPORTATION, FOR ALL WORK TO DESIRED VA STORAGE LOCATION. COORDINATE WITH VA AS REQUIRED.
- ALL DATA CABLING SHALL BE SEGREGATED FROM OTHER SPECIAL SYSTEMS INCLUDING, BUT NOT LIMITED TO, SECURITY, FIRE ALARM, AND NURSE CALL SYSTEMS. WHEN ROUTED THROUGH CONDUIT, DATA CABLING SHALL HAVE ITS OWN RACEWAY. WHEN DATA CABLING IS ROUTED THROUGH A COMMON SPECIAL SYSTEMS CABLE TRAY, CABLING SHALL BE BUNDLED WITH LIKE SYSTEMS; ADDITIONALLY, CABLE TRAYS SHALL BE PROVIDED WITH TRAY DIVIDERS AS REQUIRED TO SEGREGATE SYSTEMS FROM ONE ANOTHER.
- FIBER-OPTIC CABLING ROUTES AND ASSOCIATED RACEWAYS/ CABLE TRAY ARE DIAGRAMMATICAL. COORDINATE EXACT ROUTING WITH EXISTING CONDITIONS, ARCHITECTURAL FEATURES, MECHANICAL DUCTWORK, PIPING, EQUIPMENT, AND ANY OTHER OBSTRUCTIONS PRIOR TO INSTALLATION.

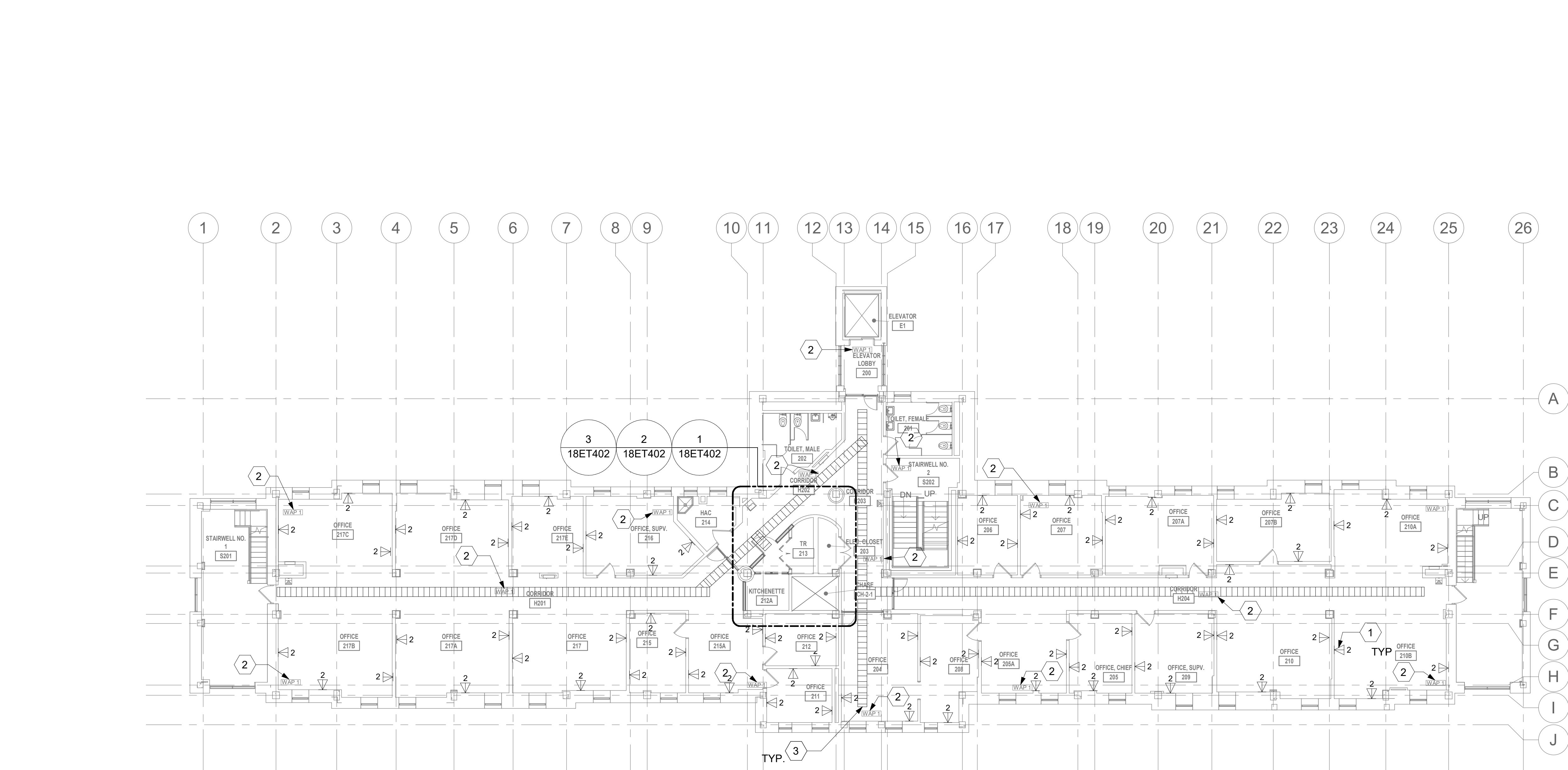
KEY NOTES

- PROVIDE TELECOMMUNICATIONS OUTLET WITH PORT QUANTITY SHOWN TO REPLACE EXISTING TELECOMMUNICATIONS OUTLET; EXISTING OUTLET CONDUIT SHALL REMAIN AND BE UTILIZED TO FEED NEW CABLING; REFERENCE SHEET DETAIL '1' ON SHEET ET503 AND THE GENERAL NOTES ON THIS SHEET FOR ADDITIONAL INFORMATION. COORDINATE WITH VA FOR EXACT OUTLET PLACEMENT.
- EXISTING WIRELESS ACCESS POINT TO BE RE-FED WITH CAT6A CABLING.
- REMOVE AND REPLACE EXISTING CABLE TRAY IN THE AREAS SHOWN AS REQUIRED; IF CABLE TRAY IS NON-EXISTENT, PROVIDE CABLE TRAY AS INDICATED. REFERENCE DETAIL '6' ON SHEET ET503 AND TELECOMMUNICATIONS WAO AND CABLE TRAY SCHEDULE ON SHEET ET701. WHERE WALL EXTENDS TO CEILING, CABLE TRAY SHALL STOP AND TRANSITION TO CONDUIT SLEEVES [(2) 4", MINIMUM] WITH APPROPRIATE FIRE-PROOFING AND CAULKING TO PASS THROUGH WALL. WHERE EXISTING CABLE TRAY AND/OR SLEEVES ARE DISCOVERED, EVALUATE CONDITION AND RACEWAY CAPACITY; IF CABLE TRAY AND/OR SLEEVES APPEAR TO BE REUSABLE, NOTIFY COR FOR POSSIBLE REUSE.
- UTILIZE EXISTING PACS SECURITY HEAD END LOCATION FOR NEW OR RELOCATED PACS SECURITY TR EQUIPMENT. UPGRADE OR MODIFY EXISTING HEAD END LOCATION AS REQUIRED TO PROVIDE A COMPLETE AND FULLY FUNCTIONAL TR PACS SECURITY SYSTEM. PROVIDE EQUIPMENT, RACEWAYS, AND CABLING AS REQUIRED. COORDINATE WITH VA PRIOR TO CONSTRUCTION. CONTRACTOR SHALL VERIFY EXACT HEAD END LOCATION AS REQUIRED.

KEY PLAN



		CONSULTANT	ARCHITECT/ENGINEER OF RECORD A/E: SPEES DESIGN BUILD 625 1ST AVE, STE 301 SEATTLE, WA 98104 (206) 590-2118 RAY SPEES  SPEESDESIGNBUILD	STAMP 	Office of Construction and Facilities Management  U.S. Department of Veterans Affairs	Drawing Title	Phase	Project Title	Project Number
						BLDG 18 - FLOOR 1 - TELECOMMUNICATIONS PLAN	CONSTRUCTION DOCUMENTS	EHRM INFRASTRUCTURE UPGRADES	657-21-701JB
						Approved:	NON SPRINKLERED	Location	Building Number
								ST. LOUIS VA MEDICAL CENTER - JEFFERSON BARRACKS, MO	18
								Issue Date	Checked
Revisions:		Date:			03/31/2022	LRL/WM	JGE/JBB	18ET101	
								315 OF 435	

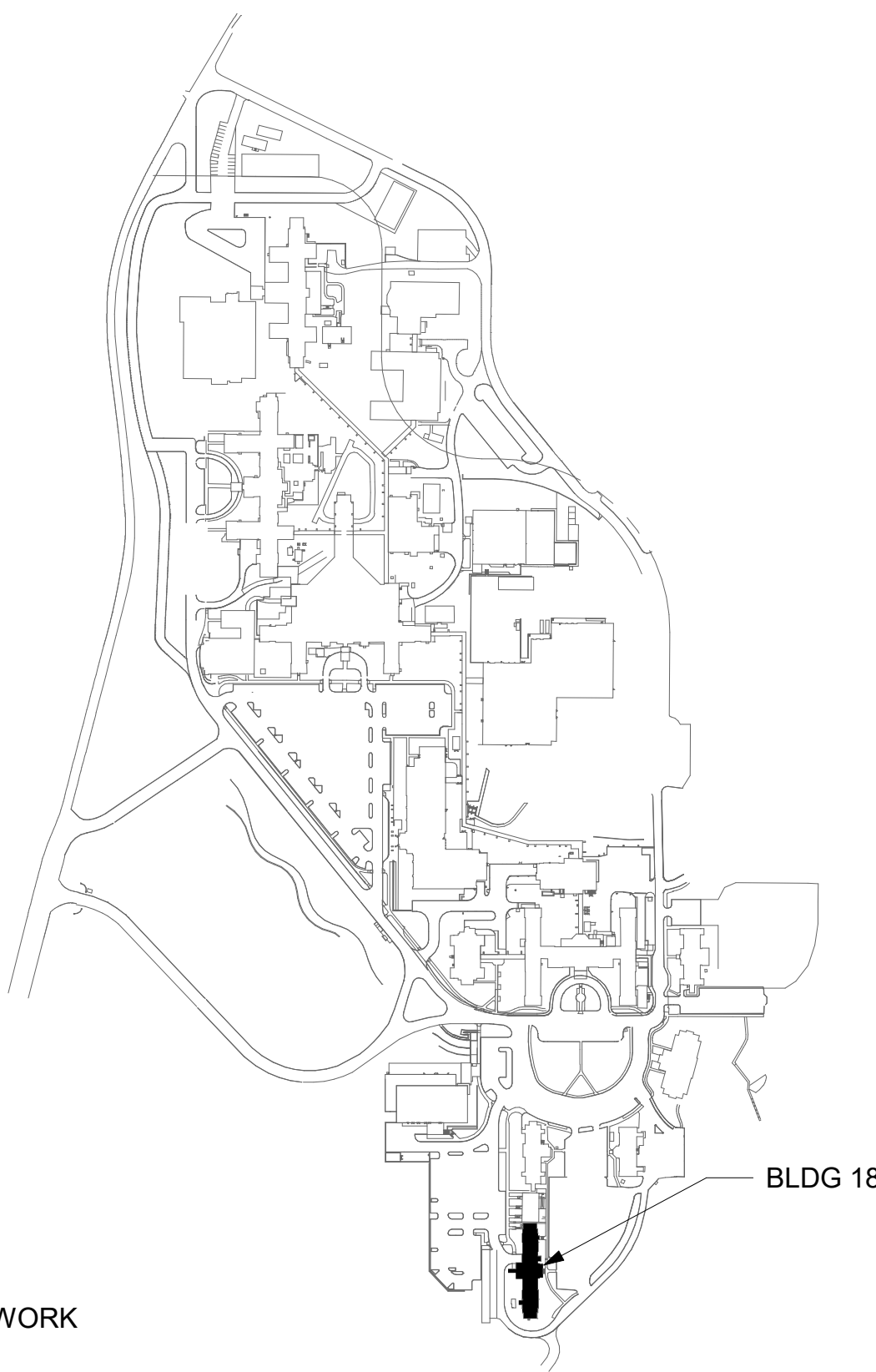


DATA OUTLETS AND DEVICES IN THIS AREA SHALL BE SERVED FROM TELECOMMUNICATION ROOM 213.

ALL BACKBONE CABLING ROUTES ARE DIAGRAMMATICAL; CONTRACTOR SHALL ENSURE A-SIDE AND B-SIDE ROUTING IS AS DIVERSE AS PRACTICAL. REFERENCE COMMUNICATIONS DRAWINGS FOR ALL REQUIRED FIBER-OPTIC CABLING.

1 BLDG 18 - FLOOR 2 - TELECOMMUNICATIONS PLAN
3/32" = 1'-0"

KEY PLAN



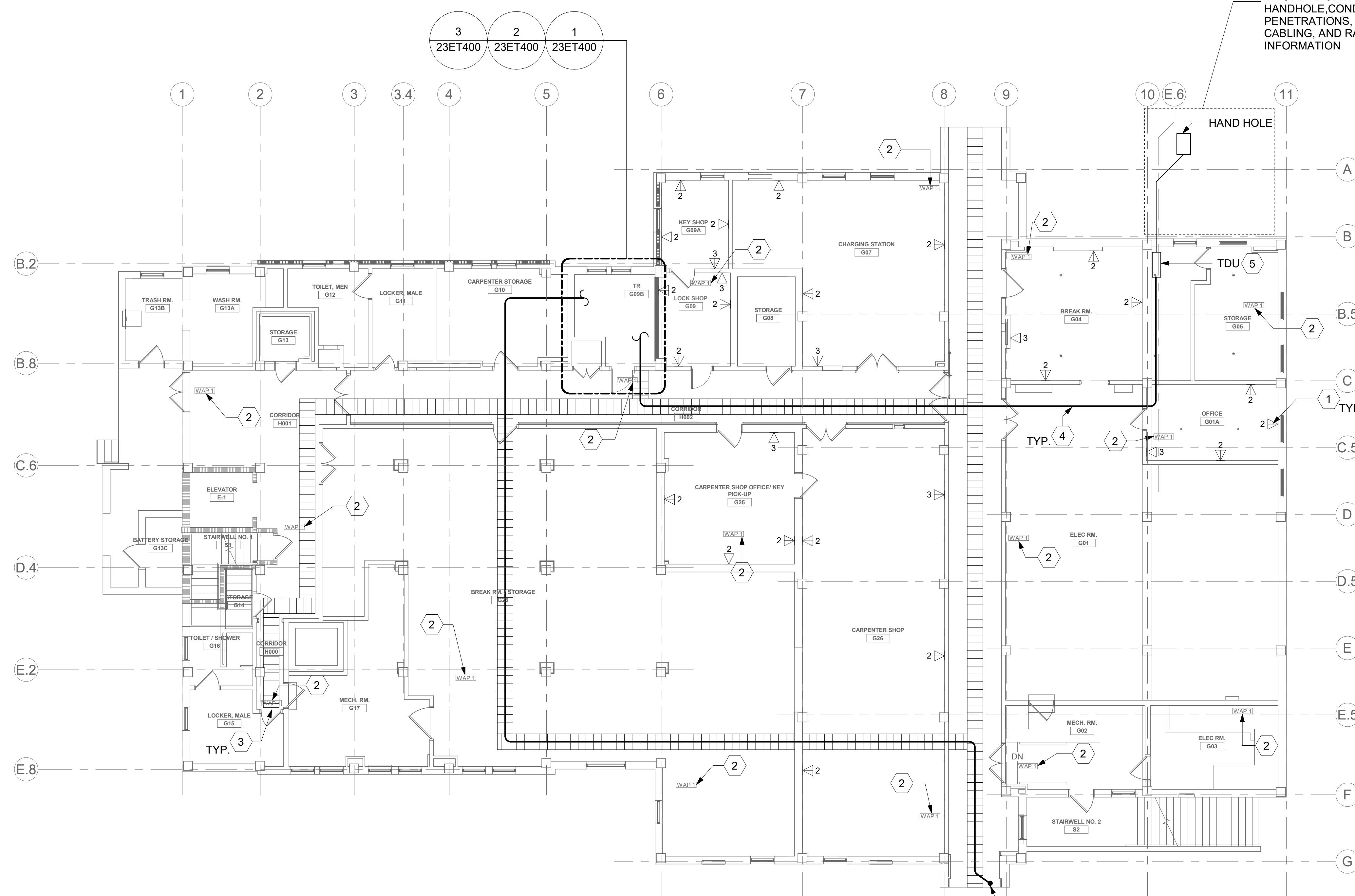
KEY NOTES

- 1 PROVIDE TELECOMMUNICATIONS OUTLET WITH PORT QUANTITY SHOWN TO REPLACE EXISTING TELECOMMUNICATIONS OUTLET; EXISTING OUTLET CONDUIT SHALL REMAIN AND BE UTILIZED TO FEED NEW CABLING; REFERENCE SHEET DETAIL "1" ON SHEET ET503 AND THE GENERAL NOTES ON THIS SHEET FOR ADDITIONAL INFORMATION. COORDINATE WITH VA FOR EXACT OUTLET PLACEMENT.
- 2 EXISTING WIRELESS ACCESS POINT TO BE RE-FED WITH CAT6A CABLING.
- 3 REMOVE AND REPLACE EXISTING CABLE TRAY IN THE AREAS SHOWN AS REQUIRED; IF CABLE TRAY IS NON-EXISTENT, PRIORITIZE CABLE TRAY AS INDICATED. REFERENCE DETAIL "6" ON SHEET ET503 AND TELECOMMUNICATIONS WAO AND CABLE TRAY SCHEDULE ON SHEET ET701. WHERE WALL EXTENDS TO CEILING, CABLE TRAY SHALL STOP AND TRANSITION TO CONDUIT SLEEVES ((2) 4", MINIMUM) WITH APPROPRIATE FIRE-PROOFING AND CAULKING TO PASS THROUGH WALL. WHERE EXISTING CABLE TRAY AND/OR SLEEVES ARE DISCOVERED, EVALUATE CONDITION AND RACEWAY CAPACITY; IF CABLE TRAY AND/OR SLEEVES APPEAR TO BE REUSABLE, NOTIFY COR FOR POSSIBLE REUSE.

GENERAL NOTES

1. ALL EXISTING EQUIPMENT MAY NOT BE SHOWN FOR CLARITY. CONTRACTOR SHALL FIELD VERIFY ALL POWER AND SIGNAL DEVICES AND ASSOCIATED CIRCUITRY AS REQUIRED. ALL RACEWAYS AND CONDUCTORS ASSOCIATED WITH EQUIPMENT TO BE DEMOLISHED SHALL BE DEMOLISHED BACK TO THEIR SOURCE, UNLESS OTHERWISE NOTED.
2. PROTECT ALL EXISTING WORK FROM DAMAGE DURING CONSTRUCTION. ANY DAMAGED MATERIALS, SYSTEMS, COMPONENTS, FINISHES BE LIKE, SHALL BE REPAIRED OR REPLACED AT THE EXPENSE OF THE CONTRACTOR TO THE ACCEPTANCE OF THE OWNER.
3. SEAL ALL INTERIOR WALL AND CEILING PENETRATIONS TO MATCH EXISTING FIRE RATING OR NEW FIRE RATING, IF REQUIRED. COORDINATE WITH ARCHITECTURAL DRAWINGS AS REQUIRED.
4. ALL TELECOMMUNICATIONS CABLING CATEGORY 6 AND BELOW SHALL BE UPGRADED WITH CAT6A PORTS AND CABLE QUANTITIES INDICATED, UNLESS NOTED OTHERWISE.
5. TELECOMMUNICATIONS CABLES SHALL BE ROUTED IN EXISTING PATHWAY VACATED BY EXISTING CABLING AS CONDUIT FILL ALLOWS. PROVIDE ADDITIONAL RACEWAYS TO EXTEND TO ASSOCIATED TR AS REQUIRED.
6. A TELECOMMUNICATIONS OUTLET UPGRADE SHALL INCLUDE, BUT IS NOT LIMITED TO REMOVING AND DISPOSING EXISTING DEVICES AND CABLES; PROVIDING ALL LABOR, MATERIALS, TOOLS, TEST INSTRUMENTS, AND CONSUMABLES REQUIRED FOR THE INSTALLATION, TERMINATION, TESTING, LABELING, AND CERTIFICATION OF A FULLY FUNCTIONAL CATEGORY 6A OUTLET WITH THE PORT QUANTITY INDICATED.
7. CONTRACTOR SHALL PROVIDE, INSTALL, AND TERMINATE HORIZONTAL CAT6A CABLING FROM EACH WAO (WORK AREA OUTLET) TO ITS RESPECTIVE TR.
8. PROVIDE PULL BOXES SIZED PER ANSI/TIA-569 AT 100-FT INTERVALS IN STRAIGHT CONDUIT RUNS, OR CONDUIT CONTAINING BENDS TOTALING MORE THAN 180 DEGREES.
9. PROVIDE CONDUITS AND SLEEVES AS REQUIRED FOR ROUTING AND INSTALLATION OF HORIZONTAL AND BACKBONE CABLING. PROVIDE FIRE-STOP MATERIALS TO SEAL IN AND AROUND CONDUIT PER CODE. REFER TO ARCHITECTURAL DRAWINGS FOR PARTITION TYPES AND WALL HEIGHTS.
10. OUTLET LOCATIONS ARE APPROXIMATE. DETERMINE EXACT LOCATIONS IF FIELD; DOCUMENT VARIANCES ON AS-BUILT DRAWINGS.
11. CONTRACTOR SHALL BE RESPONSIBLE FOR RELOCATING FURNITURE, INCLUDING TRANSPORTATION, FOR ALL WORK TO DESIRED VA STORAGE LOCATION. COORDINATE WITH VA AS REQUIRED.
12. ALL DATA CABLING SHALL BE SEGREGATED FROM OTHER SPECIAL SYSTEMS INCLUDING, BUT NOT LIMITED TO, SECURITY, FIRE ALARM, AND NURSE CALL SYSTEMS. WHEN ROUTED THROUGH CONDUIT, DATA CABLING SHALL HAVE ITS OWN RACEWAY. WHEN DATA CABLING IS ROUTED THROUGH A COMMON SPECIAL SYSTEMS CABLE TRAY, CABLING SHALL BE BUNDLED WITH LIKE SYSTEMS; ADDITIONALLY, CABLE TRAYS SHALL BE PROVIDED WITH TRAY DIVIDERS AS REQUIRED TO SEGREGATE SYSTEMS FROM ONE ANOTHER.
13. FIBER-OPTIC CABLING ROUTES AND ASSOCIATED RACEWAYS/ CABLE TRAY ARE DIAGRAMMATICAL. COORDINATE EXACT ROUTING WITH EXISTING CONDITIONS, ARCHITECTURAL FEATURES, MECHANICAL DUCTWORK, PIPING, EQUIPMENT, AND ANY OTHER OBSTRUCTIONS PRIOR TO INSTALLATION.

		CONSULTANT	ARCHITECT/ENGINEER OF RECORD A/E: SPEES DESIGN BUILD 625 1ST AVE, STE 301 SEATTLE, WA 98104 (206) 590-2118 RAY SPEES	STAMP LOUIS R. LITZKO STATE OF WASHINGTON REGISTERED PROFESSIONAL ENGINEER 3-31-23	Office of Construction and Facilities Management VA U.S. Department of Veterans Affairs	Drawing Title BLDG 18 - FLOOR 2 - TELECOMMUNICATIONS PLAN Approved:	Phase CONSTRUCTION DOCUMENTS NON SPRINKLERED	Project Title EHRM INFRASTRUCTURE UPGRADES Location ST. LOUIS VA MEDICAL CENTER - JEFFERSON BARRACKS, MO Issue Date 03/31/2022	Project Number 657-21-701JB Building Number 18 Drawing Number 18ET102 316 OF 435
Revisions:	Date:								



DATA OUTLETS AND DEVICES IN THIS AREA SHALL BE SERVED FROM TELECOMMUNICATION ROOM G09B.

ALL BACKBONE CABLING ROUTES ARE DIAGRAMMATICAL; CONTRACTOR SHALL ENSURE A-SIDE AND B-SIDE ROUTING IS AS DIVERSE AS PRACTICAL. REFERENCE COMMUNICATIONS DRAWINGS FOR ALL REQUIRED FIBER-OPTIC CABLING.

EXISTING SIDE-A FIBER-OPTIC BACKBONE BUILDING ENTRY POINT (APPROXIMATE LOCATION). ROUTE FIBER-OPTIC CABLES TO TRS AS INDICATED ON COMMUNICATIONS DRAWINGS; REFERENCE COMMUNICATIONS DRAWINGS FOR ALL FIBER-OPTIC CABLING, RACEWAY TYPES, SPECIFICATIONS, AND RATINGS. REFERENCE KEY NOTES ON THIS SHEET REGARDING CABLE TRAY AND VERTICAL/HORIZONTAL ROUTING FOR ADDITIONAL FIBER BACKBONE CABLING REQUIREMENTS.

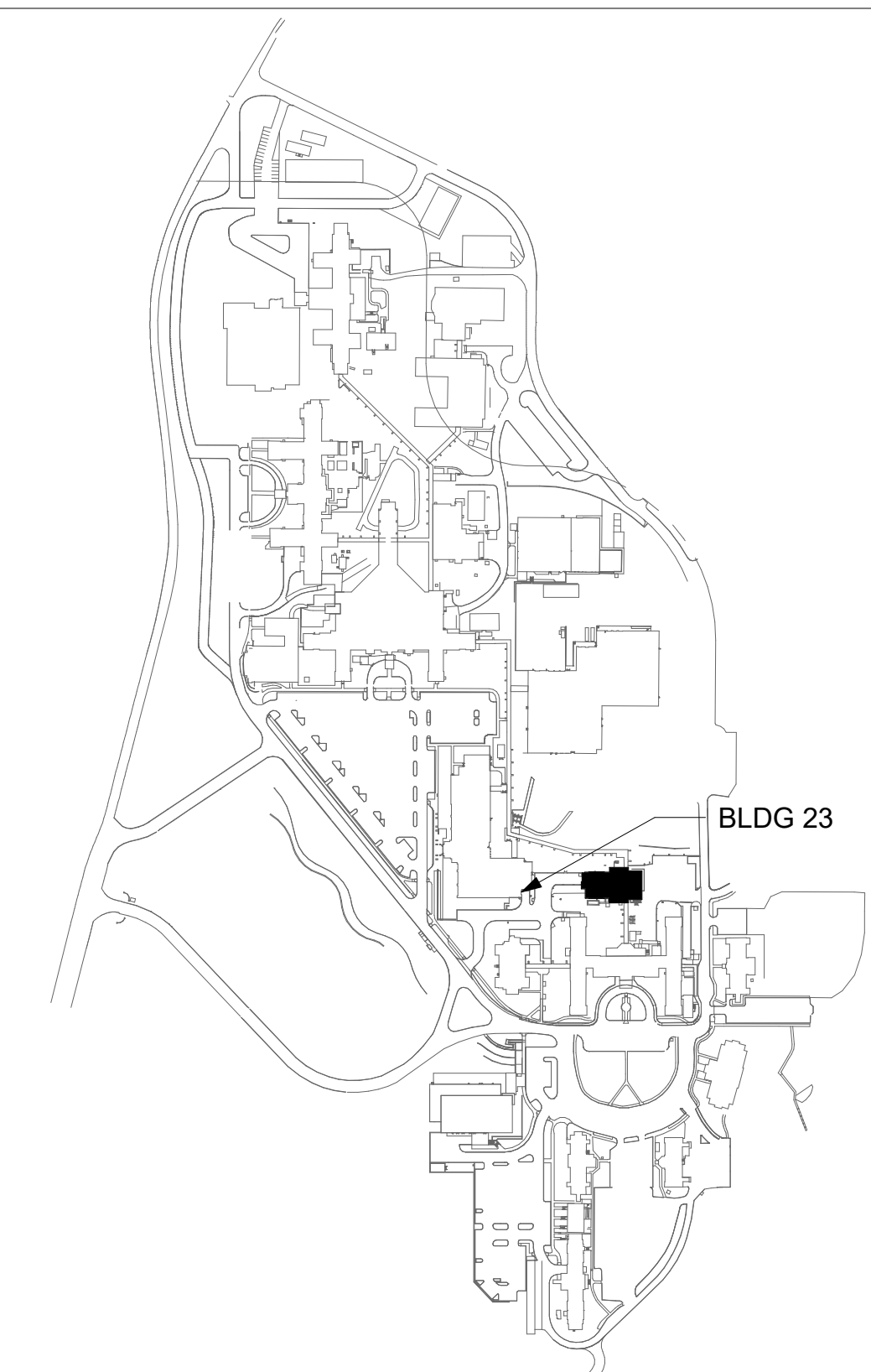
GENERAL NOTES

1. ALL EXISTING EQUIPMENT MAY NOT BE SHOWN FOR CLARITY. CONTRACTOR SHALL FIELD VERIFY ALL POWER AND SIGNAL DEVICES AND ASSOCIATED CIRCUITRY AS REQUIRED. ALL RACEWAYS AND CONDUCTORS ASSOCIATED WITH EQUIPMENT TO BE DEMOLISHED SHALL BE DEMOLISHED BACK TO THEIR SOURCE, UNLESS OTHERWISE NOTED.
2. PROTECT ALL EXISTING WORK FROM DAMAGE DURING CONSTRUCTION. ANY DAMAGED MATERIALS, SYSTEMS, COMPONENTS, FINISHES BE LIKE, SHALL BE REPAIRED OR REPLACED AT THE EXPENSE OF THE CONTRACTOR TO THE ACCEPTANCE OF THE OWNER.
3. SEAL ALL INTERIOR WALL AND CEILING PENETRATIONS TO MATCH EXISTING FIRE RATING OR NEW FIRE RATING, IF REQUIRED. COORDINATE WITH ARCHITECTURAL DRAWINGS AS REQUIRED.
4. ALL TELECOMMUNICATIONS CABLING CATEGORY 6 AND BELOW SHALL BE UPGRADED WITH CAT6A PORTS AND CABLE QUANTITIES INDICATED, UNLESS NOTED OTHERWISE.
5. TELECOMMUNICATIONS CABLES SHALL BE ROUTED IN EXISTING PATHWAY VACATED BY EXISTING CABLING. PROVIDE RACEWAYS TO EXTEND TO ASSOCIATED TR.
6. A TELECOMMUNICATIONS OUTLET UPGRADE SHALL INCLUDE, BUT IS NOT LIMITED TO REMOVING AND DISPOSING EXISTING DEVICES AND CABLES; PROVIDING ALL LABOR, MATERIALS, TOOLS, TEST INSTRUMENTS, AND CONSUMABLES REQUIRED FOR THE INSTALLATION, TERMINATION, TESTING, LABELING, AND CERTIFICATION OF A FULLY FUNCTIONAL CATEGORY 6A OUTLET WITH THE PORT QUANTITY INDICATED.
7. CONTRACTOR SHALL PROVIDE, INSTALL, AND TERMINATE HORIZONTAL CAT 6A CABLING FROM EACH WAO (WORK AREA OUTLET) TO ITS RESPECTIVE TR.
8. PROVIDE PULL BOXES SIZED PER ANSI/TIA-569 AT 100-FT INTERVALS IN STRAIGHT CONDUIT RUNS, OR CONDUIT CONTAINING BENDS TOTALING MORE THAN 180 DEGREES.
9. PROVIDE CONDUITS AND SLEEVES AS REQUIRED FOR ROUTING AND INSTALLATION OF HORIZONTAL AND BACKBONE CABLING. PROVIDE FIRE-STOP MATERIALS TO SEAL IN AND AROUND CONDUIT PER CODE. REFER TO ARCHITECTURAL DRAWINGS FOR PARTITION TYPES AND WALL HEIGHTS.
10. OUTLET LOCATIONS ARE APPROXIMATE. DETERMINE EXACT LOCATIONS IN FIELD; DOCUMENT VARIANCES ON AS-BUILT DRAWINGS.
11. CONTRACTOR SHALL BE RESPONSIBLE FOR RELOCATING FURNITURE, INCLUDING TRANSPORTATION, FOR ALL WORK TO DESIRED VA STORAGE LOCATION. COORDINATE WITH VA AS REQUIRED.
12. ALL DATA CABLING SHALL BE SEGREGATED FROM OTHER SPECIAL SYSTEMS INCLUDING, BUT NOT LIMITED TO, SECURITY, FIRE ALARM, AND NURSE CALL SYSTEMS. WHEN ROUTED THROUGH CONDUIT, DATA CABLING SHALL HAVE ITS OWN RACEWAY. WHEN DATA CABLING IS ROUTED THROUGH A COMMON SPECIAL SYSTEMS CABLE TRAY, CABLING SHALL BE BUNDLED WITH LIKE SYSTEMS; ADDITIONALLY, CABLE TRAYS SHALL BE PROVIDED WITH TRAY DIVIDERS AS REQUIRED TO SEGREGATE SYSTEMS FROM ONE ANOTHER.
13. FIBER-OPTIC CABLING ROUTES AND ASSOCIATED RACEWAYS/CABLE TRAY ARE DIAGRAMMATICAL. COORDINATE EXACT ROUTING WITH EXISTING CONDITIONS, ARCHITECTURAL FEATURES, MECHANICAL DUCTWORK, PIPING, EQUIPMENT, AND ANY OTHER OBSTRUCTIONS PRIOR TO INSTALLATION.

KEY NOTES

1. PROVIDE TELECOMMUNICATIONS OUTLET WITH PORT QUANTITY SHOWN TO REPLACE EXISTING TELECOMMUNICATIONS OUTLET; EXISTING OUTLET CONDUIT SHALL REMAIN AND BE UTILIZED TO FEED NEW CABLING; REFERENCE SHEET DETAIL '1' ON SHEET ET503 AND THE GENERAL NOTES ON THIS SHEET FOR ADDITIONAL INFORMATION. COORDINATE WITH VA FOR EXACT OUTLET PLACEMENT.
2. EXISTING WIRELESS ACCESS POINT TO BE RE-FED WITH CAT6A CABLING.
3. REMOVE AND REPLACE EXISTING CABLE TRAY IN THE AREAS SHOWN AS REQUIRED; IF CABLE TRAY IS NON-EXISTENT, PROVIDE CABLE TRAY AS INDICATED. REFERENCE DETAIL '6' ON SHEET ET503 AND TELECOMMUNICATIONS WAO AND CABLE TRAY SCHEDULE ON SHEET ET701. WHERE WALL EXTENDS TO CEILING, CABLE TRAY SHALL STOP AND TRANSITION TO CONDUIT SLEEVES [2] 4". MINIMUM WITH APPROPRIATE FIRE-PROOFING AND CAULKING TO PASS THROUGH WALL. WHERE EXISTING CABLE TRAY AND/OR SLEEVES ARE DISCOVERED, EVALUATE CONDITION AND RACEWAY CAPACITY; IF CABLE TRAY AND/OR SLEEVES APPEAR TO BE REUSABLE, NOTIFY COR FOR POSSIBLE REUSE.
4. UTILIZE EXISTING PACS SECURITY HEAD END LOCATION FOR NEW OR RELOCATED PACS SECURITY TR EQUIPMENT. UPGRADE OR MODIFY EXISTING HEAD END LOCATION AS REQUIRED TO PROVIDE A COMPLETE AND FULLY FUNCTIONAL TR PACS SECURITY SYSTEM. PROVIDE EQUIPMENT, RACEWAYS, AND CABLING AS REQUIRED. COORDINATE WITH VA PRIOR TO CONSTRUCTION. CONTRACTOR SHALL VERIFY EXACT HEAD END LOCATION AS REQUIRED.

KEY PLAN



AREA OF WORK



DATA OUTLETS AND DEVICES IN THIS AREA SHALL BE SERVED FROM TELECOMMUNICATION ROOM 121A.

ALL BACKBONE CABLING ROUTES ARE DIAGRAMMATICAL; CONTRACTOR SHALL ENSURE A-SIDE AND B-SIDE ROUTING IS AS DIVERSE AS PRACTICAL. REFERENCE COMMUNICATIONS DRAWINGS FOR ALL REQUIRED FIBER-OPTIC CABLING.




[illegible]