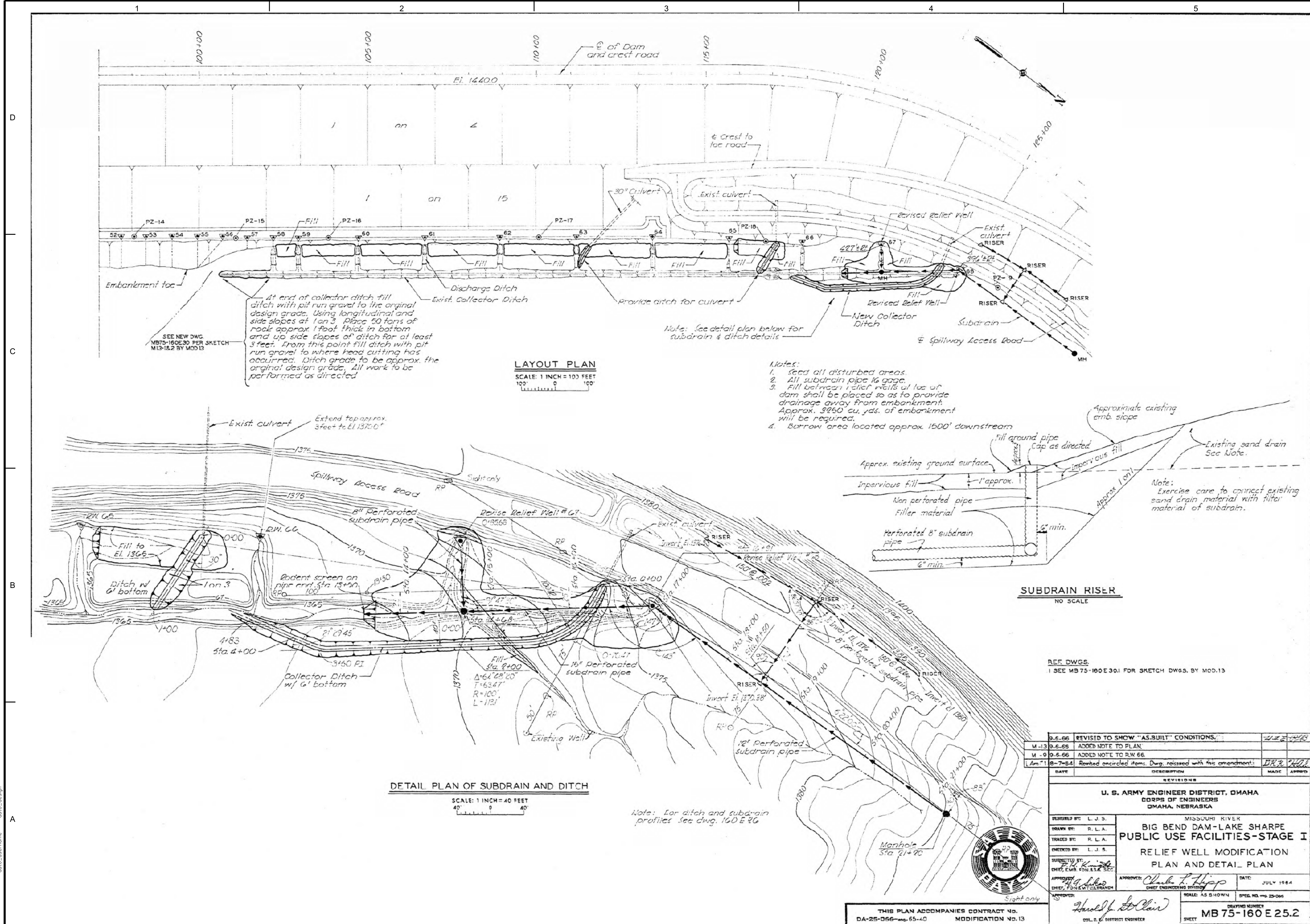
[illegible]

NOVEMBER 2022	KPB/CLR	
U. S. ARMY ENGINEER DISTRICT		
CORPS OF ENGINEERS		
OMAHA, NEBRASKA		
SOLICITATION NO.: W912F738005	OK'D BY: RJC/BUL	
CONTRACT NO.: W912F7236xxx	SUBMITTED BY: ALB	
FILE NUMBER:	FILE NAME: auto-short_design	
LOT DATE: 04/04/2006	LOT SCALE: 50'00"=50'00"	
SIZE: 35'x22'		

**RELIEF WELL MODIFICATION
PLANS AND DETAIL PLAN
(1966)**

SHEET
IDENTIFICATION
NUMBER
FIO-1



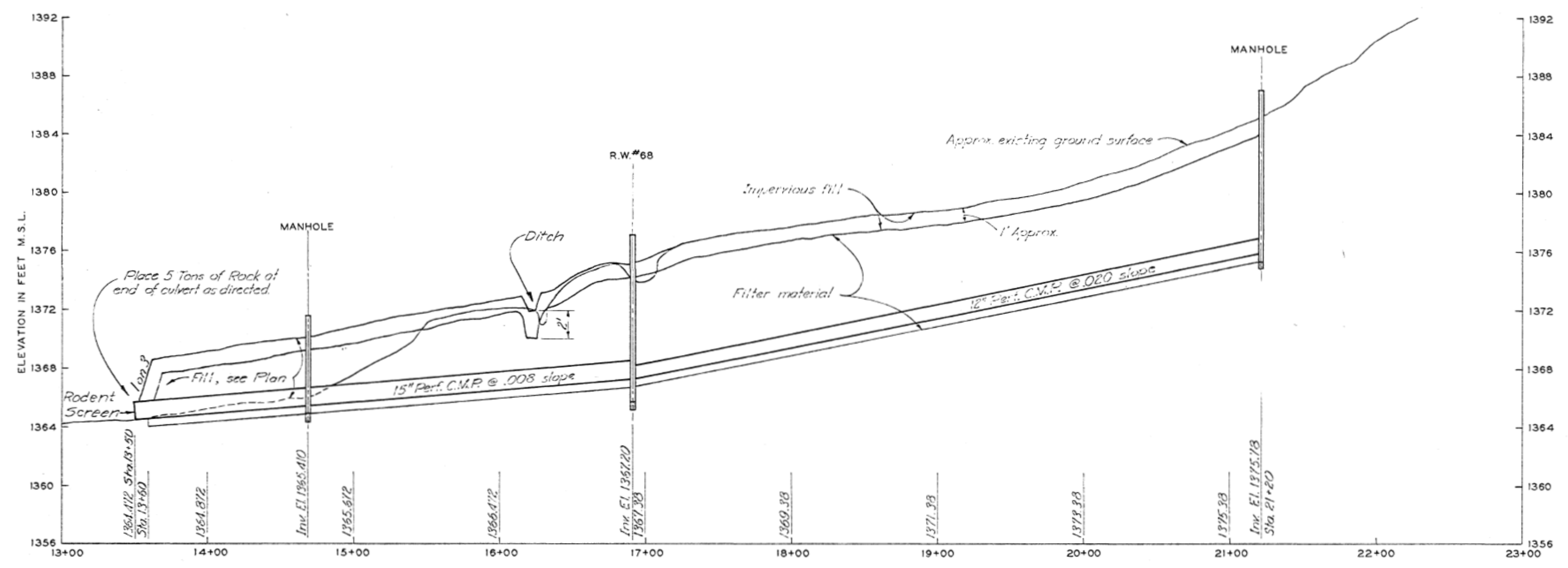
auto_username
auto_design

D

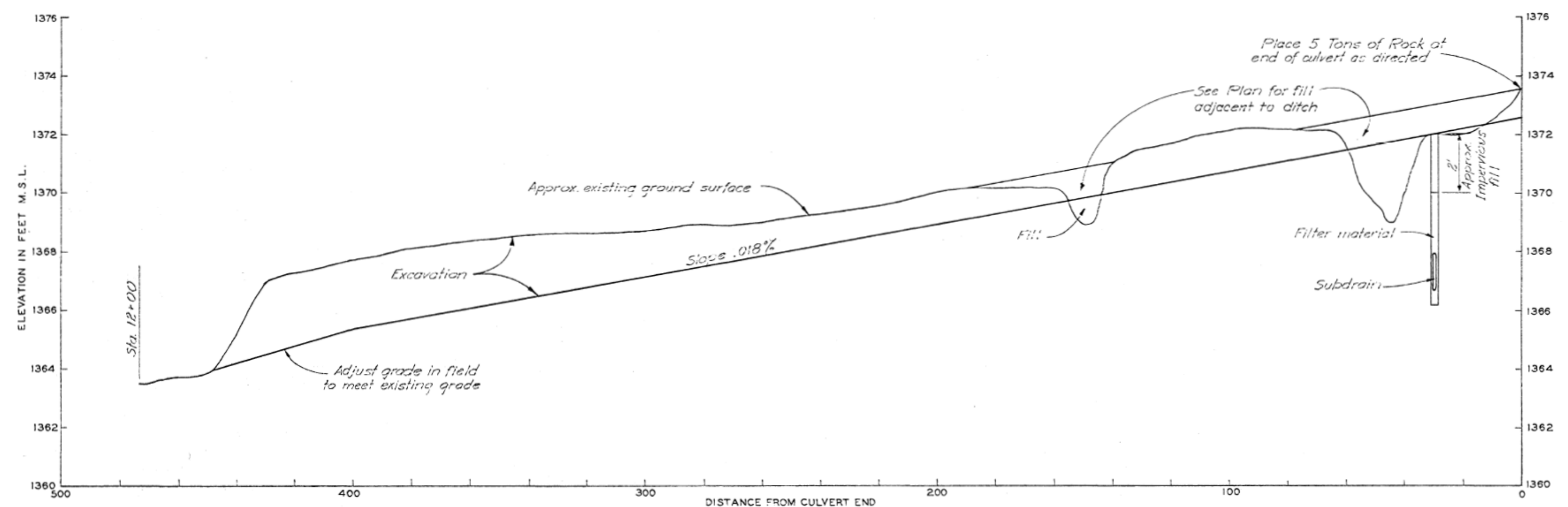
C

B

A



PROFILE SUBDRAIN LINE
SCALE: VERT. 1 INCH = 4 FEET
HORIZ. 1 INCH = 40 FEET



DITCH PROFILE
SCALE: VERT. 1 INCH = 2 FEET
HORIZ. 1 INCH = 20 FEET



THIS PLAN ACCOMPANIES CONTRACT NO. DA-25-066-mg-55-40, MODIFICATION NO.

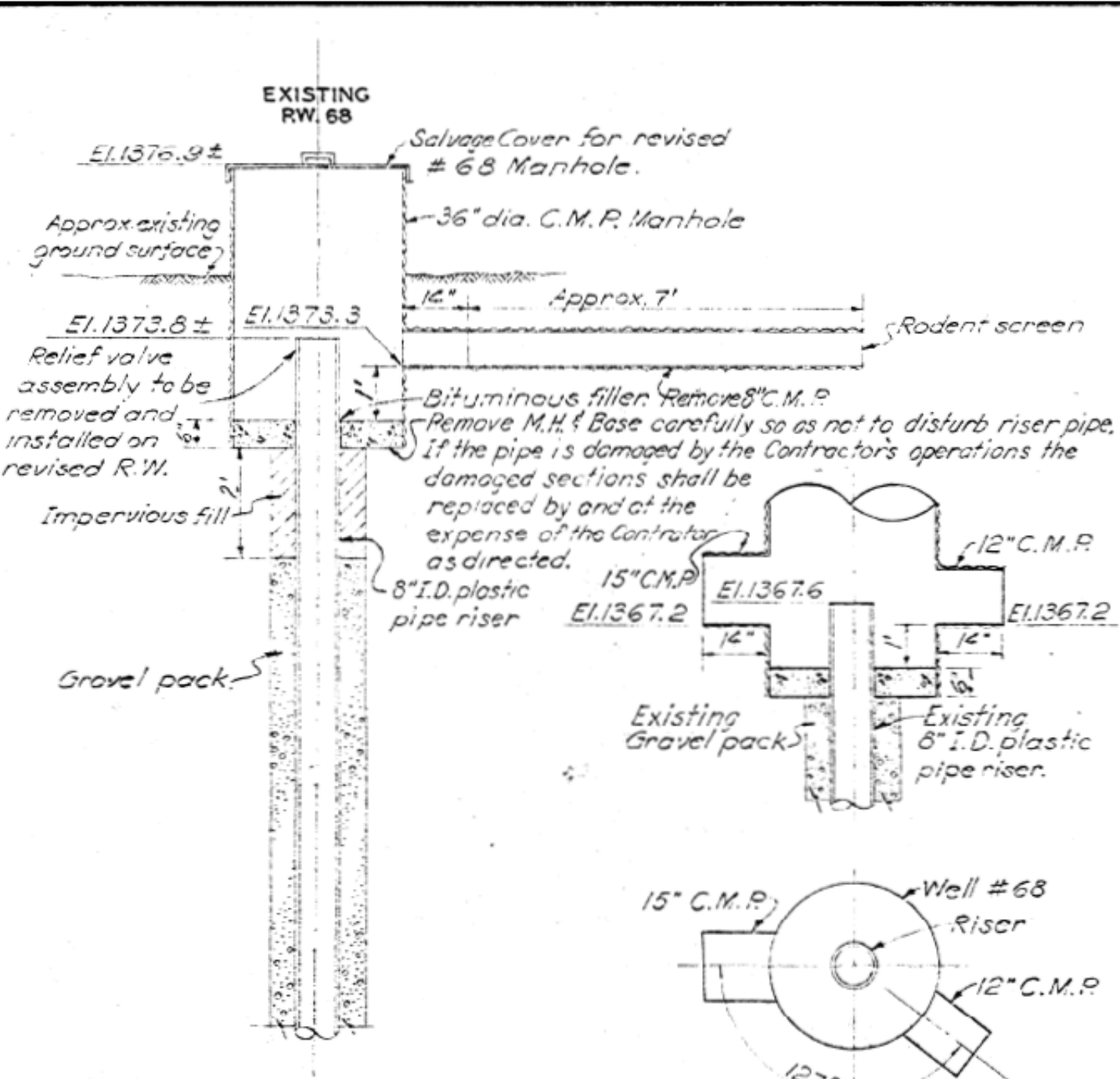
9-5-66 REVISED TO SHOW "AS-BUILT" CONDITIONS.		DATE	MADE	APPRO
REVISIONS				
U. S. ARMY ENGINEER DISTRICT, OMAHA CORPS OF ENGINEERS OMAHA, NEBRASKA				
DESIGNED BY: L. J. S.	MISSOURI RIVER			
DRAWN BY: G. R. S.	BIG BEND DAM - LAKE SHARPE			
TRADED BY: G. R. S.	PUBLIC USE FACILITIES - STAGE I			
CHECKED BY: L. J. S.	RELIEF WELL MODIFICATION			
SUBMITTED BY: F. L. K.	PROFILES			
APPROVED: [Signature]	APPROVED: Charles L. Hays	DATE: JULY 1964		
CHIEF, CIVIL & S. BRANCH	CHIEF ENGINEERING DIVISION	SCALE: AS SHOWN SPEC. NO. mg 25-066		
APPROVED: Harold F. St. Clair	DRAWING NUMBER		SHEET	
COL. D. L. DISTRICT ENGINEER	MB 75-160E 261		SHEET	

US ARMY CORPS
OF ENGINEERS
OMAHA DISTRICT

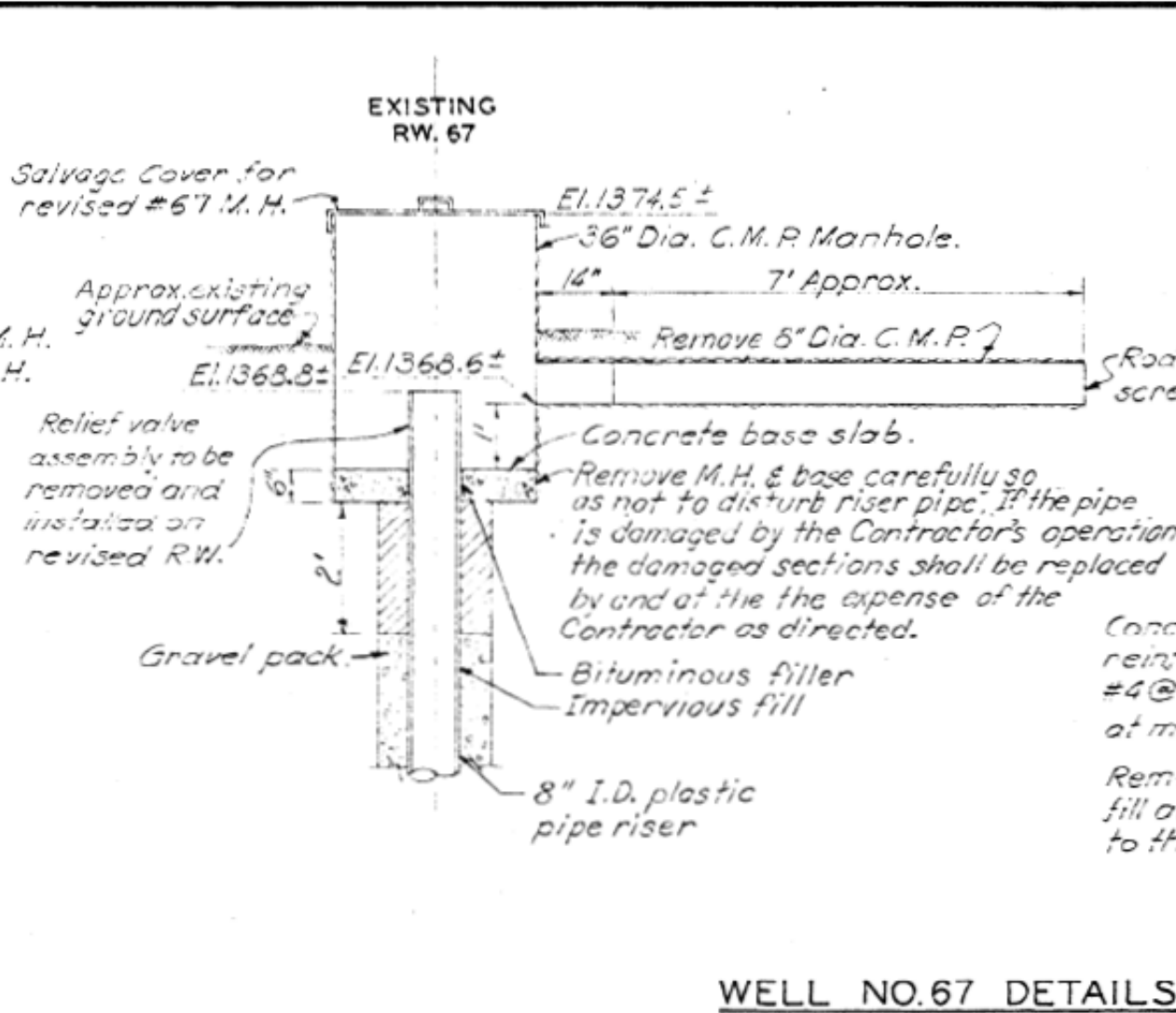
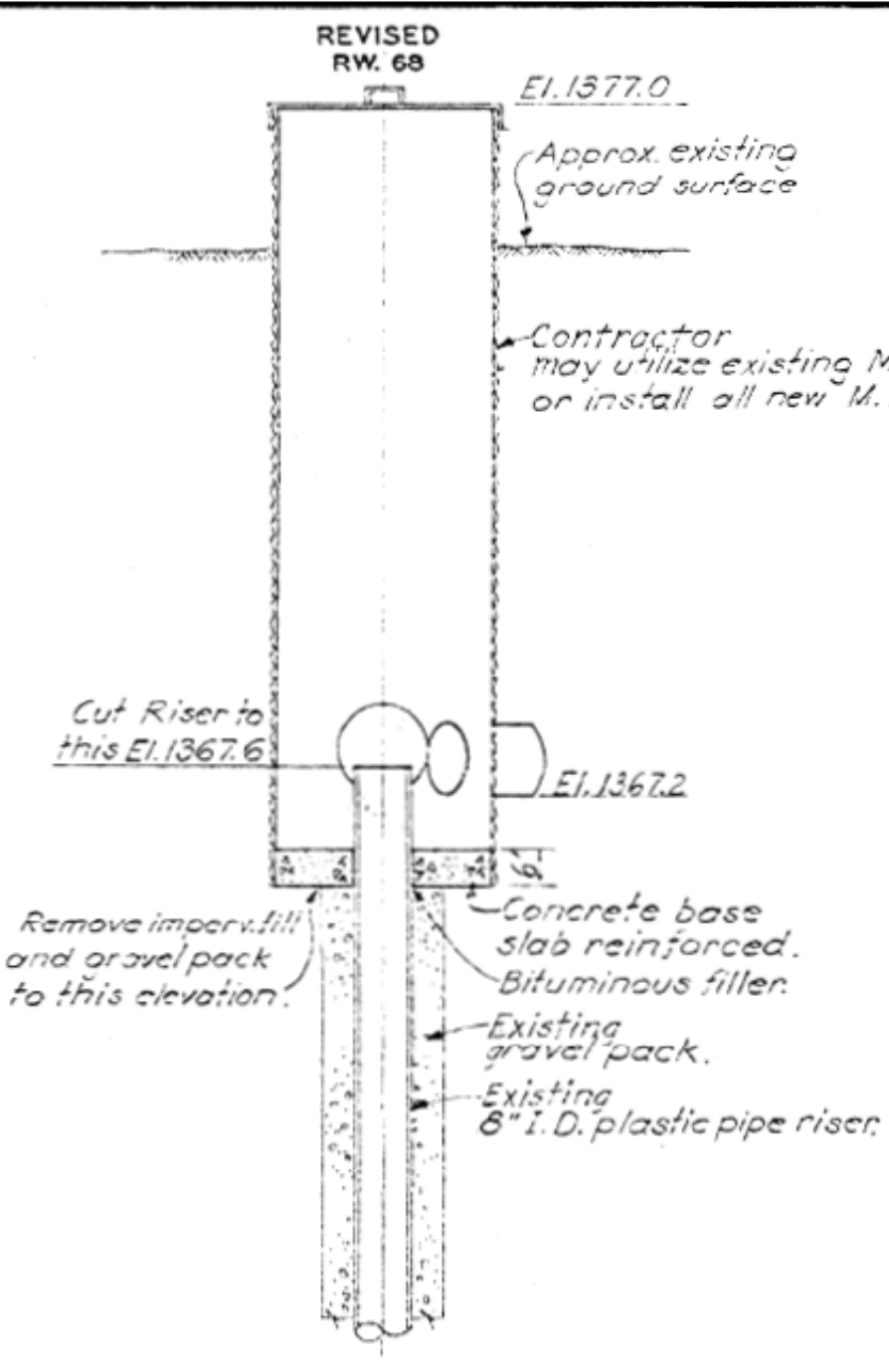
DESIGNED BY: KPB/CLR	DATE: NOVEMBER 2022	U. S. ARMY ENGINEER DISTRICT CORPS OF ENGINEERS OMAHA, NEBRASKA	PLOT DATE: 10-25-2022
DWN BY: RJC/BLL	SOLIDIFICATION NO.: W9128F230005		
SUBMITTED BY: ALB	CONTRACT NO.: W9128F230005		
FILE NAME: 8400-300-1-000-000	FILE NUMBER: W9128F230005		
PLOT SCALE: 1/8" = 1'-0"		PLOT DATE: 10-25-2022	

BIG BEND DAM - LAKE SHARPE
FORT THOMPSON, SOUTH DAKOTA
REPLACEMENT OF LEFT ABUTMENT
COLLECTOR PIPE SYSTEM
RELIEF WELL MODIFICATION
PROFILES
(1966)

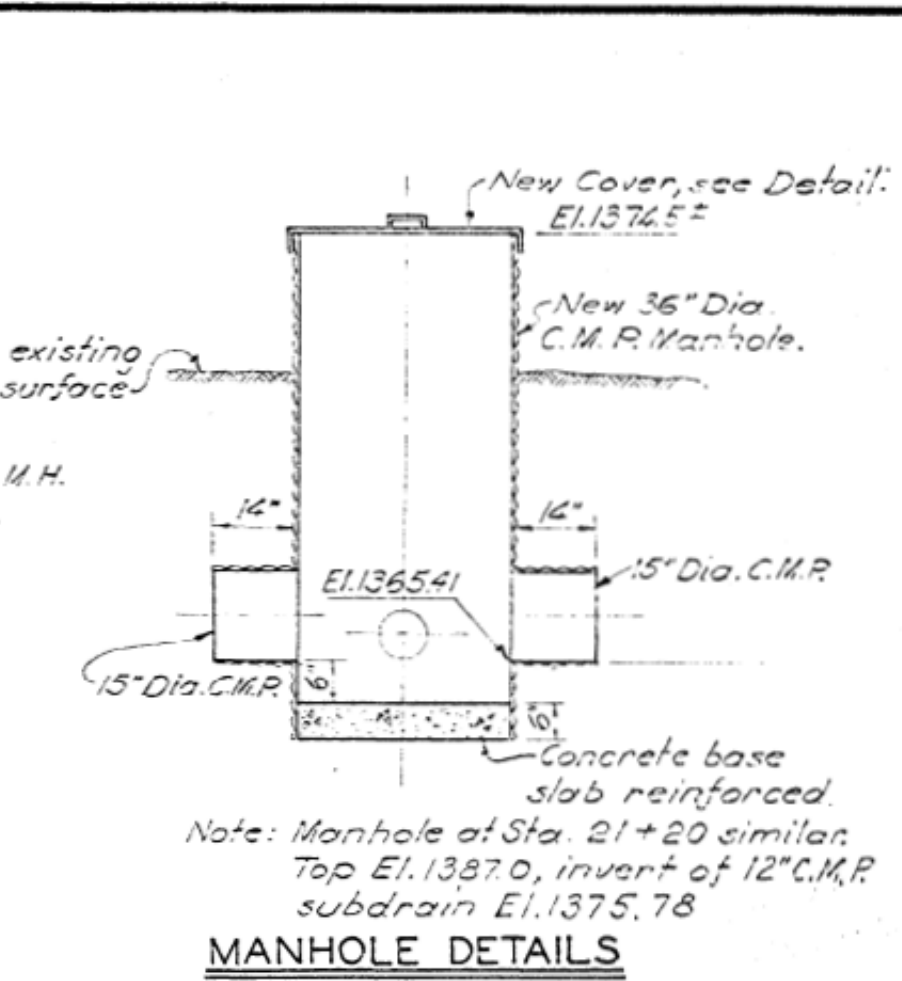
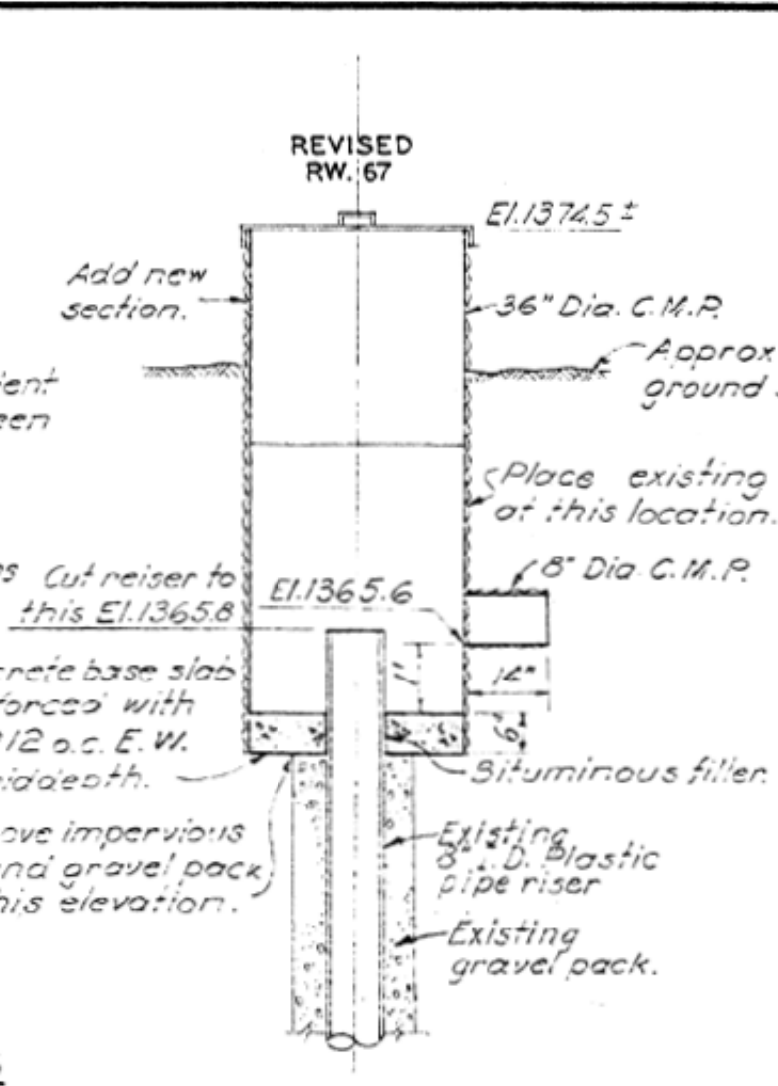
SHEET
IDENTIFICATION
NUMBER
FIO-2



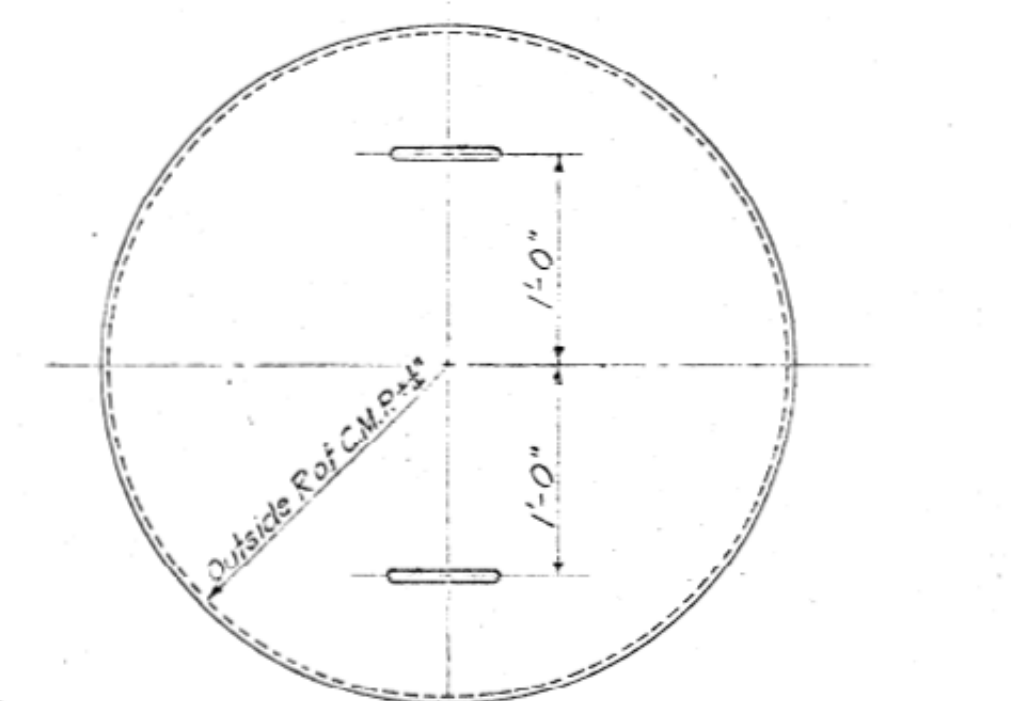
WELL NO. 68 DETAILS



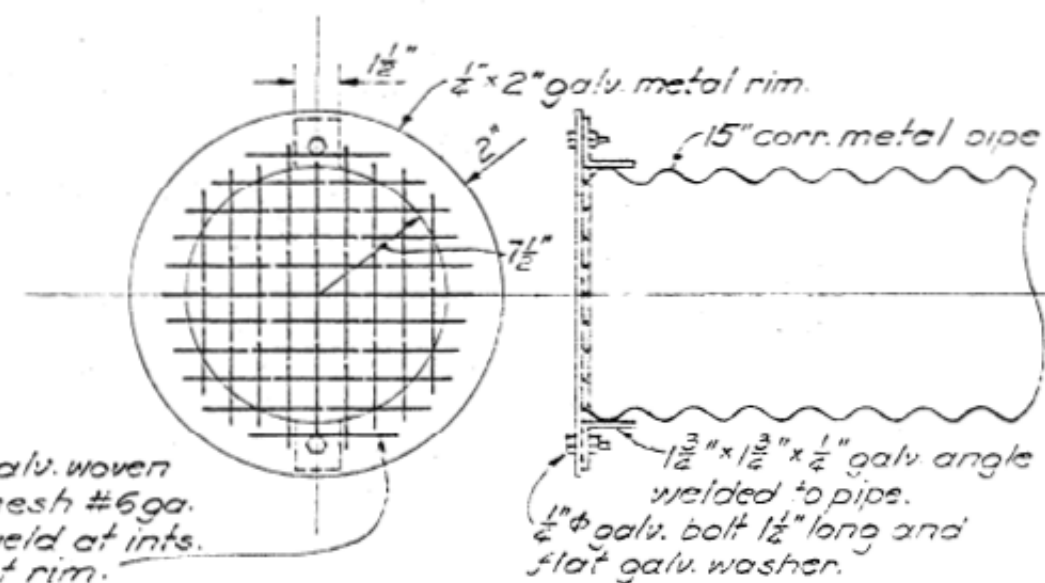
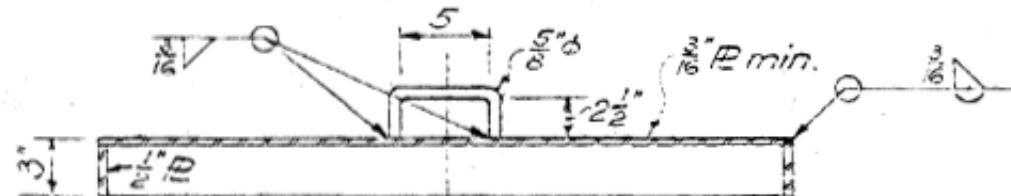
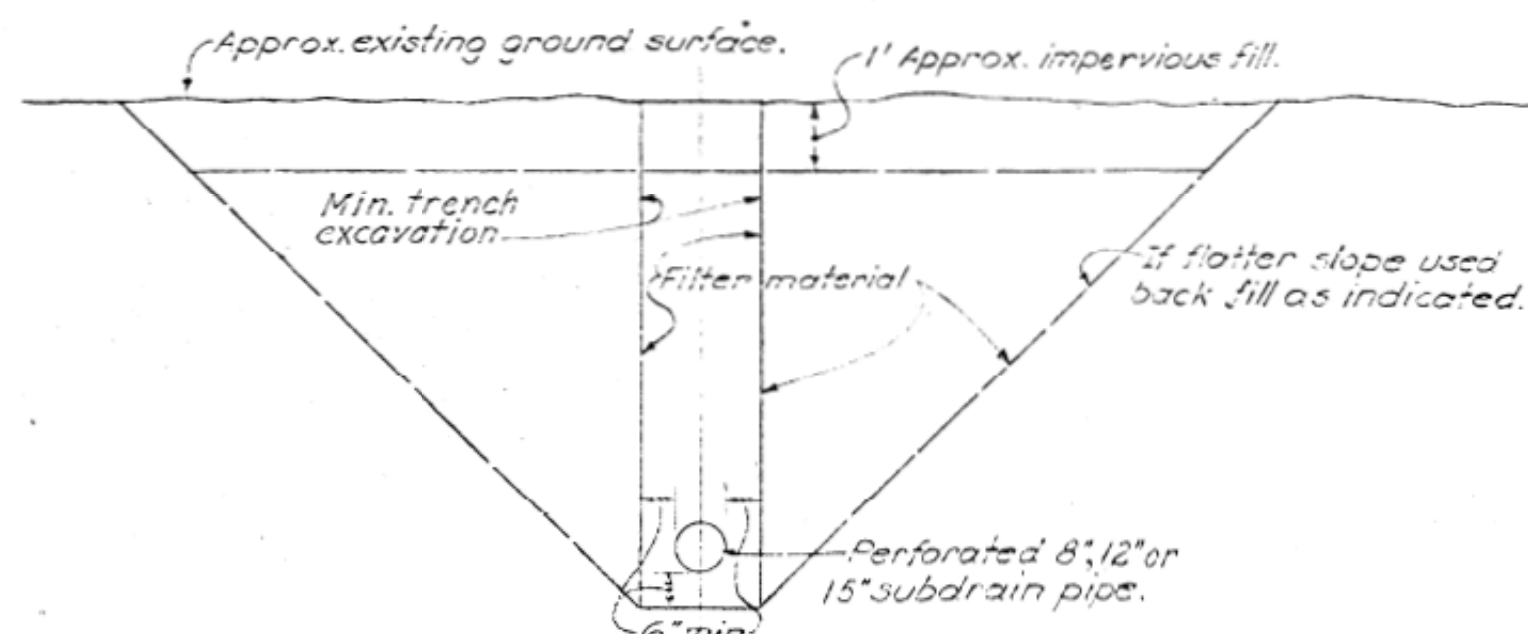
WELL NO.67 DETAILS



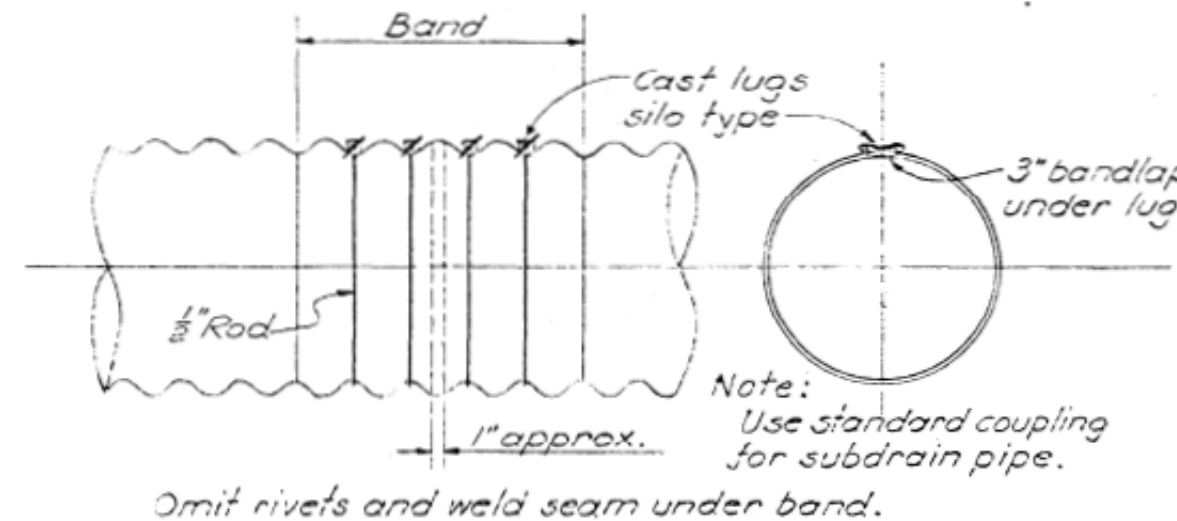
MANHOLE DETAILS



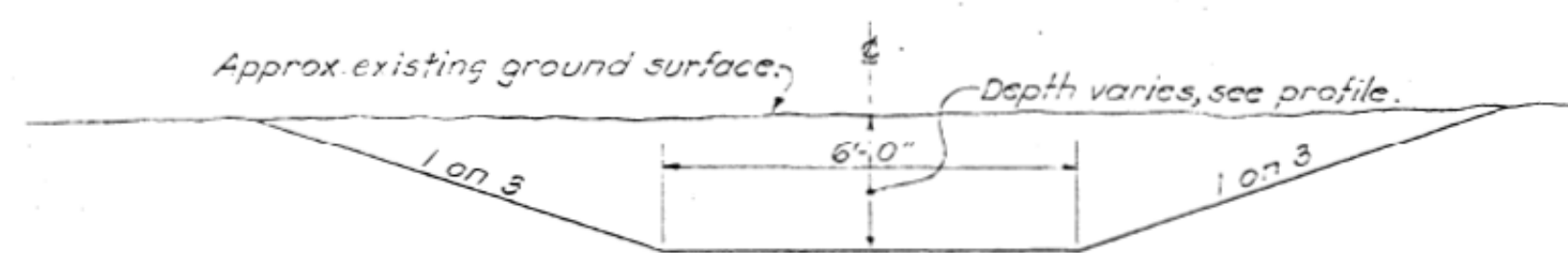
STEEL COVER DETAIL
FOR MANHOLES

RODENT SCREEN

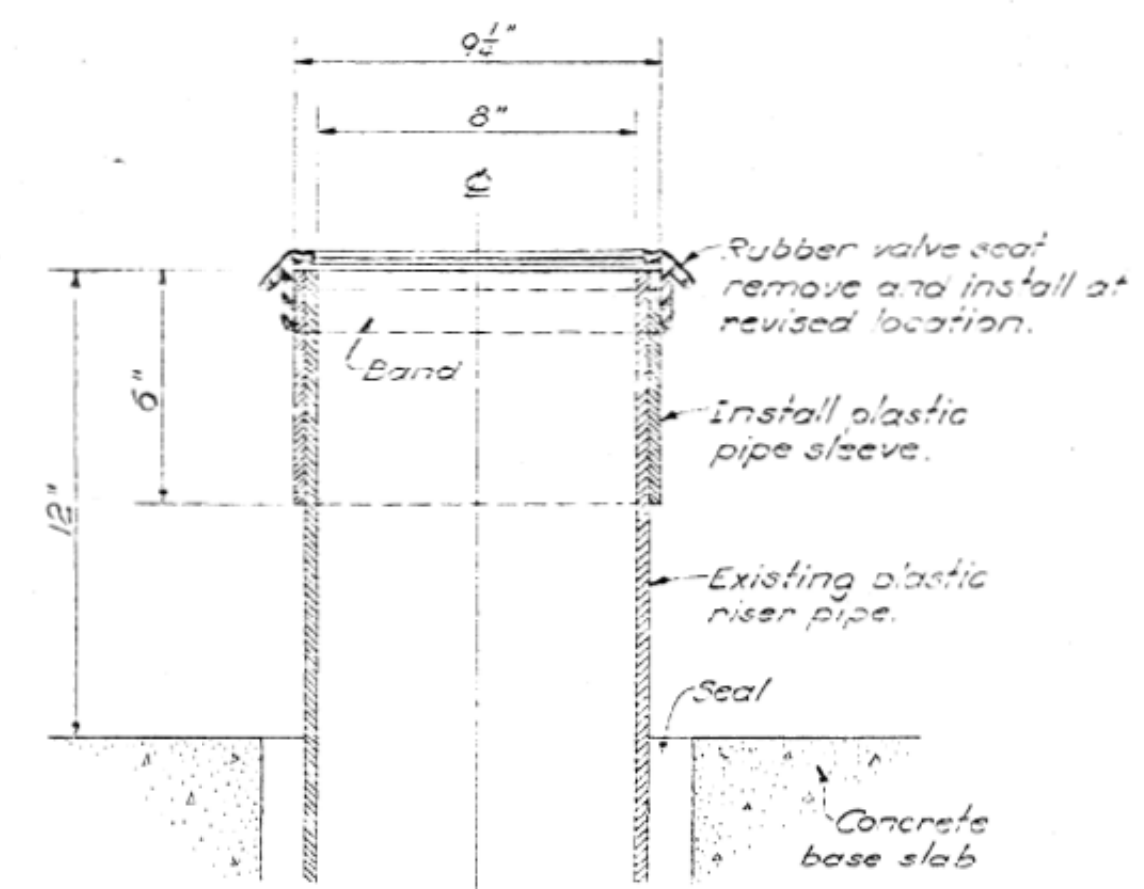
TYPICAL SECTION
SUBDRAIN



METAL PIPE COUPLING FOR MANHOLES



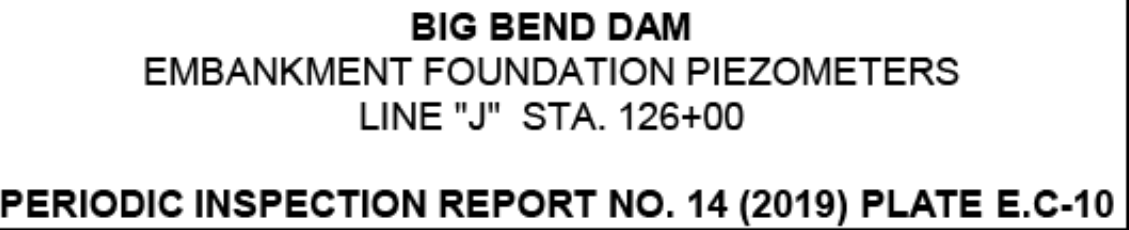
TYPICAL DITCH SECTION



RELIEF VALVE DETAIL

	9-5-66	REVISED TO SHOW "AS-BUILT" CONDITIONS.	HFE	HLB
M-9	9-6-66	WELL NO. 67 DETAILS COVER ELEVATIONS CHANGED		
Am-2	8-11-64	Revised encircled items in accordance with written description. Drawing not issued with this amendment.	DKK	HQB

DATE	DESCRIPTION	MADE	REVISION
<p align="center">U. S. ARMY ENGINEER DISTRICT, OMAHA CORPS OF ENGINEERS OMAHA, NEBRASKA</p>			
DESIGNED BY: L. J. S.	MISSOURI RIVER		
DRAWN BY: G. M.	BIG BEND DAM-LAKE SHARPE		
TRACED BY: G. M.	PUBLIC USE FACILITIES-STAGE I		
CHECKED BY: L. J. S.	RELIEF WELL MODIFICATION		
SUBMITTED BY: <i>L. J. S.</i>	DETAILS		
APPROVED: <i>H. L. Shook</i> CHIEF FORS & MTC'S BRANCH	APPROVED: <i>Charles K. Lipps</i> CHIEF ENGINEERING DIVISION		
APPROVED:	SCALE: NO SCALE	DATE: JULY 1964	SPEC. NO. ENG-25-066
<i>Harold J. St. Clair</i> COL, DISTRICT ENGINEER	DRAWING NUMBER MB75-160E27.2		
	SHEET		

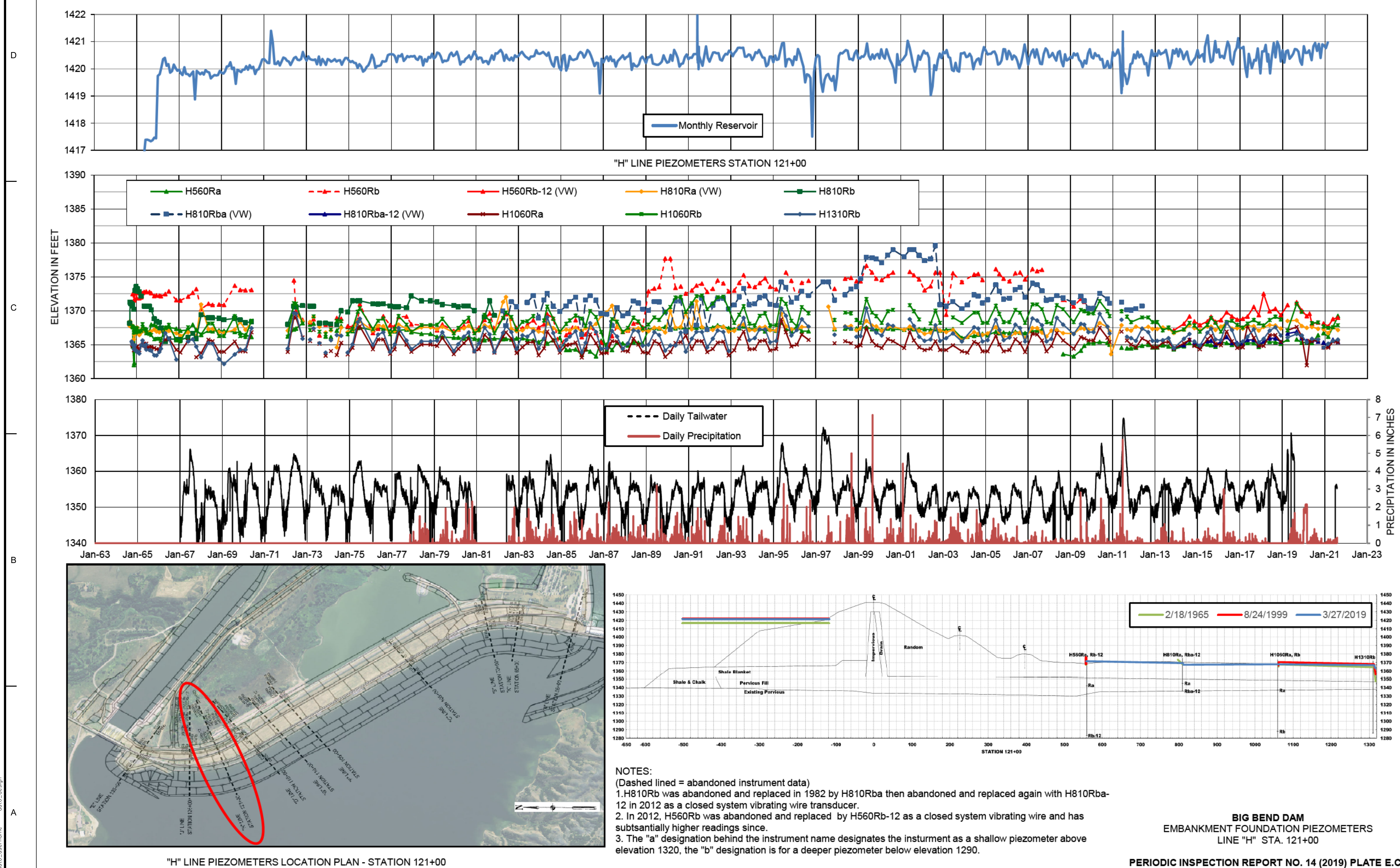


[illegible]

U.S. ARMY ENGINEER DISTRICT	405B/CLIR	NOVEMBER 2022
CORPS OF ENGINEERS	DWYER BY: NAC/BSL	
OMAHA, NEBRASKA	ALB LIMITED BY: W912F73CXXXX	
	FILE NAME: auto-short-1-design	
	SIZE: 351x222	PLOT DATE: auto-yr/mo
		PLOT SCALE: auto-scale

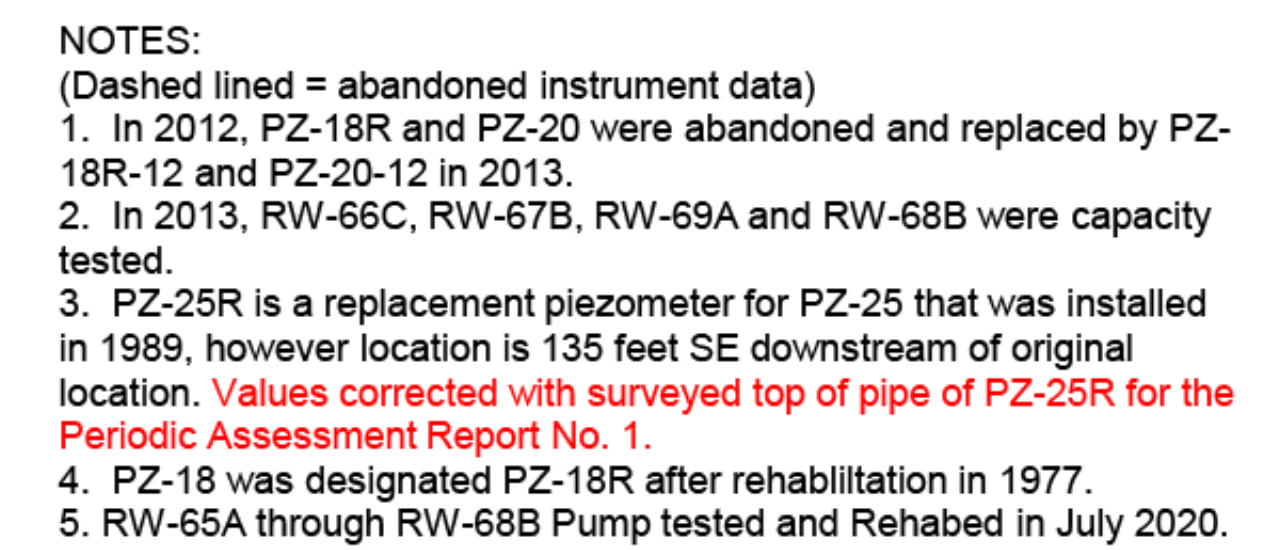
EMBANKMENT FOUNDATION PIEZOMETERS
LINE "H" STATION 121+00

SHEET
IDENTIFICATION
NUMBER
FIO-5



BIG BEND DAM
EMBANKMENT FOUNDATION PIEZOMETERS
LINE "H" STA. 121+00

PERIODIC INSPECTION REPORT NO. 14 (2019) PLATE E.C-9



BIG BEND DAM EMBANKMENT RELIEF WELL AND RELIEF WELL PIEZOMETER OBSERVATIONS

[illegible]

U.S. ARMY ENGINEER DISTRICT CORPS OF ENGINEERS OMAHA, NEBRASKA	PERFORMER	NOVEMBER 2022
	DWM BY: CLW/BLL	CKO BY: RJC/BLL
	SUBMITTED BY: ALG	CONTRACT NO.: W9257.23CXXXX
	FILE NAME:	FILE NUMBER:
	DATE: 31.1X.22	PLOT SCALE:
		PLOT DATE:

**FORT THOMPSON, SOUTH DAKOTA
REPLACEMENT OF LEFT ABUTMENT
COLLECTOR PIPE SYSTEM
GEOLOGIC PROFILE C-C'
SUBSURFACE INVESTIGATION**

SHEET
IDENTIFICATION
NUMBER
FIO-10

