

REVISION HISTORY	
REV	DATE
1	
2	
3	
4	
5	
6	
7	

GREAT PLAINS AREA INDIAN HEALTH SERVICE OFFICE OF ENVIRONMENTAL HEALTH & ENGINEERING	
DIVISION OF FACILITIES MANAGEMENT 420 S. GARFIELD AVE, STE 200 PIERRE, SD 57501 (605) 945-5434 FAX (605) 224-1704	



TITLE Parking Lot Improvements LOWER BRULE HEALTH CENTER LOWER BRULE SIOUX RESERVATION	
LOWER BRULE, SD	

DRAWN BY: RG, KB	
CHECKED BY:	
APPROVED BY:	
PROJECT NO:	
PROJECT ENG:	
DWG SCALE:	
DATE: 08-18-2022	
SIZE: 11" X 17"	

DRAWING NO. A-1	REV. 1
--------------------	-----------



REVISION HISTORY	
REV	DATE
1	
2	
3	
4	
5	
6	
7	

GREAT PLAINS AREA INDIAN HEALTH SERVICE
OFFICE OF ENVIRONMENTAL
HEALTH & ENGINEERING

DIVISION OF FACILITIES MANAGEMENT
420 S. GARFIELD AVE, STE 200
PIERRE, SD 57501
(605) 945-5434 FAX (605) 224-1704



TITLE

Parking Lot Demolition
LOWER BRULE
HEALTH CENTER

LOWER BRULE SIOUX RESERVATION

LOWER BRULE, SD

DRAWN BY: RG, KB

CHECKED BY:

APPROVED BY:

PROJECT NO:

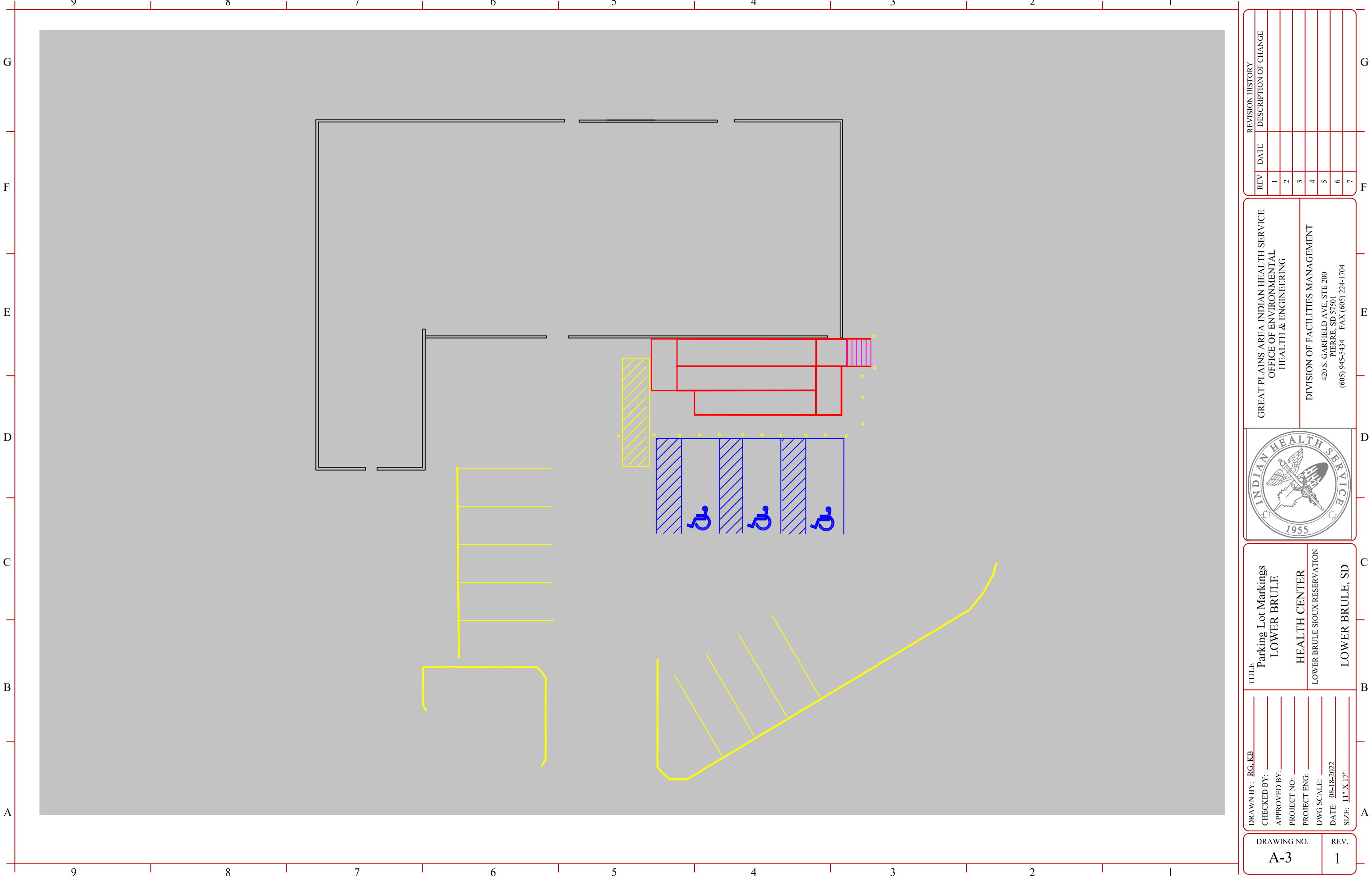
PROJECT ENG:

DWG SCALE:

DATE: 08-18-2022

SIZE: 11" X 17"

DRAWING NO.	REV.
A-2	1



INSTALL 1/4" THICK LOW DESNITY
PE PIPE BOLLARD COVER

DOMED FINISH ON
TOP OF CONCRETE

8" BY 1/4" THICK STEEL PIPE
CASING PAINTED YELLOW

6 - No. 4 REBAR IMBEDDED
AFTER CONCRETE IS
POURED IN CASING
6 FEET LONG

MIN. 3000 PSI CONCRETE

OVERSIZED CONCRETE
SUPPORT BLOCK
MIN. 24" DIAMETER

CONCRETE PAD

BOLLARD DETAIL
NOT TO SCALE

REVISION HISTORY	
REV	DATE
1	
2	
3	
4	
5	
6	
7	

GREAT PLAINS AREA INDIAN HEALTH SERVICE OFFICE OF ENVIRONMENTAL HEALTH & ENGINEERING	
DIVISION OF FACILITIES MANAGEMENT 420 S. GARFIELD AVE, STE 200 PIERRE, SD 57501 (605) 945-5434 FAX (605) 224-1704	



TITLE Parking Lot Improvements LOWER BRULE HEALTH CENTER LOWER BRULE SIOUX RESERVATION	
LOWER BRULE, SD	

DRAWN BY: RG, KB	
CHECKED BY:	
APPROVED BY:	
PROJECT NO:	
PROJECT ENG:	
DWG SCALE:	
DATE: 08-18-2022	
SIZE: 11" X 17"	

DRAWING NO. A-4	REV. 1
--------------------	-----------