

11/18/2021 10:43:47 AM

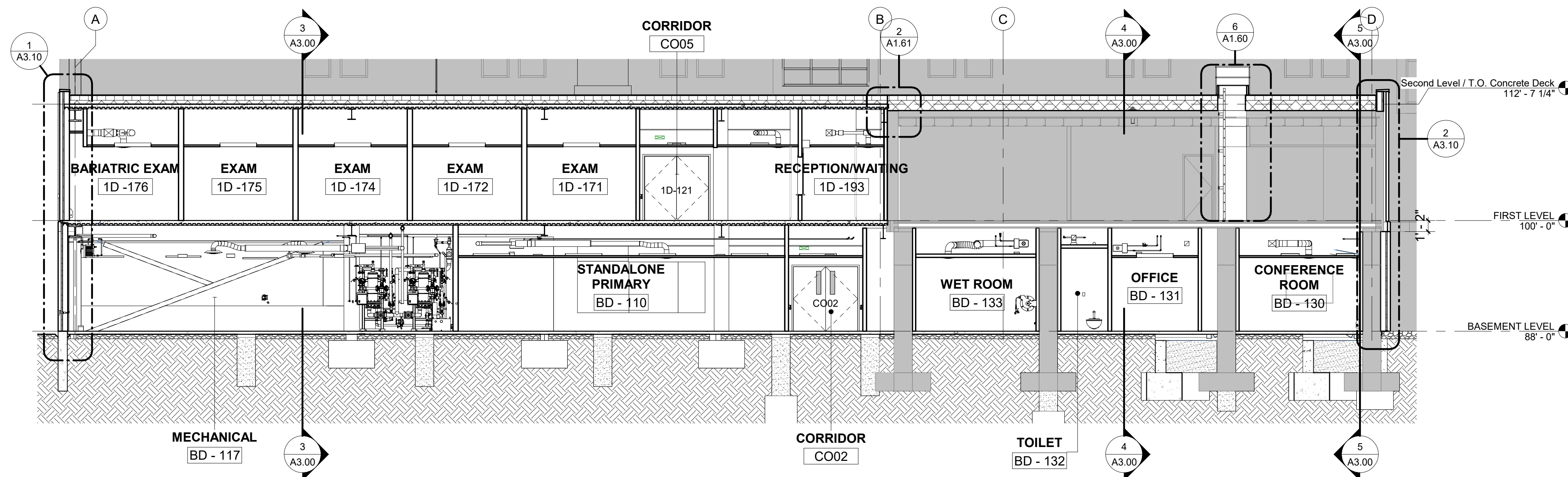
one and one half inches = one foot

three quarters inch = one foot one inch = one foot

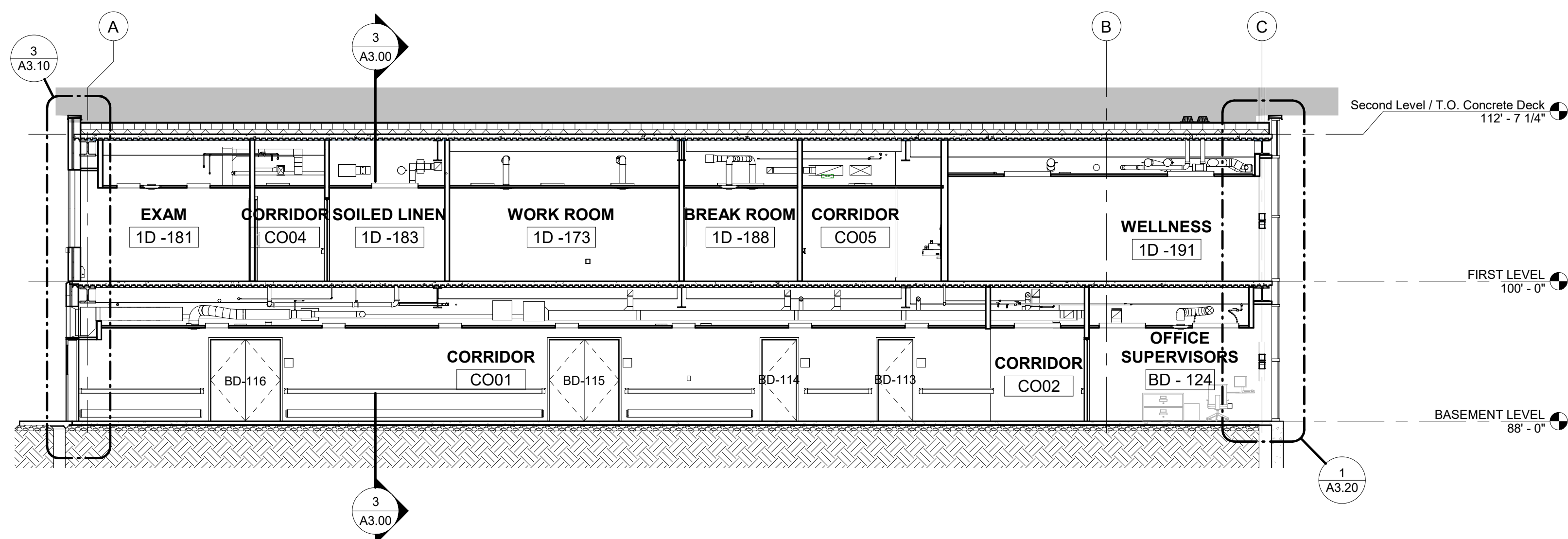
one half inch = one foot

one quarter inch = one foot

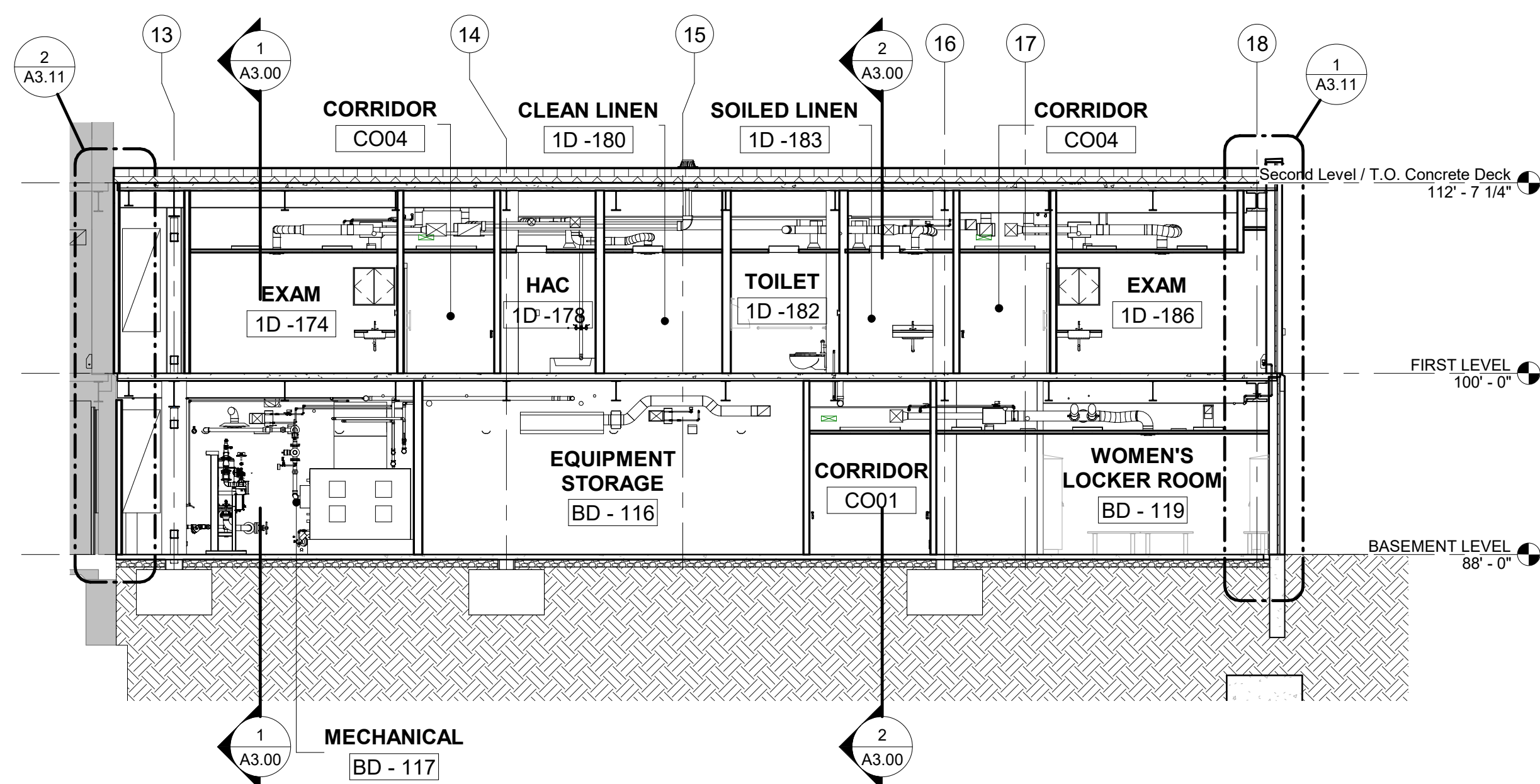
one eighth inch = one foot



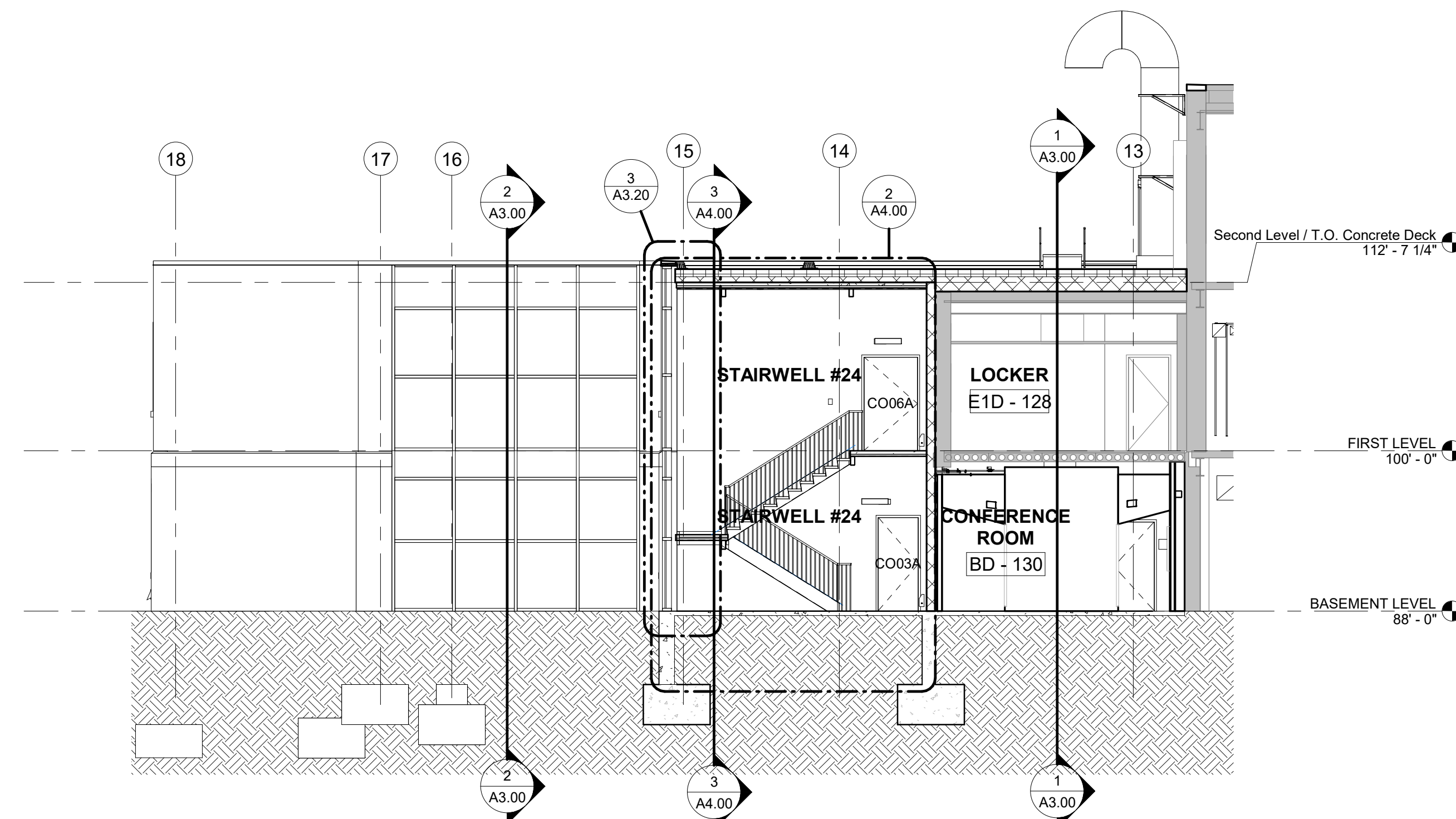
1 BUILDING SECTION
1/8" = 1'-0"



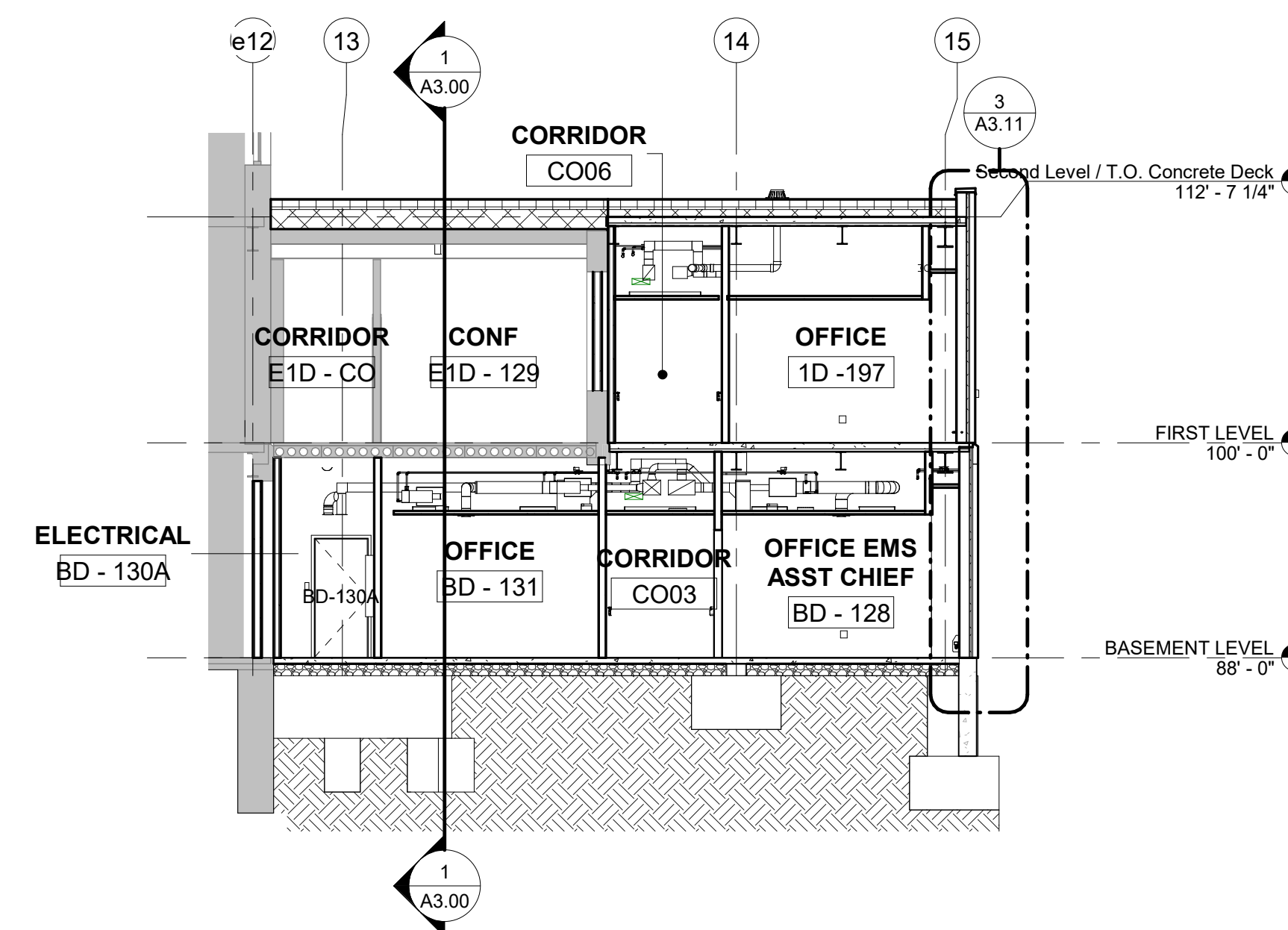
2 BUILDING SECTION
1/8" = 1'-0"



3 BUILDING SECTION
1/8" = 1'-0"



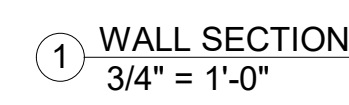
5 BUILDING SECTION
1/8" = 1'-0"



4 BUILDING SECTION
1/8" = 1'-0"

CONSTRUCTION DOCUMENTS

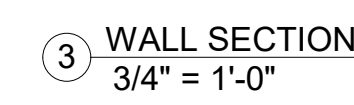
--	--	--	--	--	--	--	--	--	--	--	--	--	--	--	--	--	--	--	--	--	--	--	--	--	--	--	--	--	--	--	--	--	--	--	--	--	--	--	--	--	--	--	--	--	--	--	--	--	--	--	--	--	--	--	--	--	--	--	--	--	--	--	--	--	--	--	--	--	--	--	--	--	--	--	--	--	--	--	--	--	--	--	--	--	--	--	--	--	--	--	--	--	--	--	--	--	--	--	--	--	--	--	--	--	--	--	--	--	--	--	--	--	--	--	--	--	--	--	--	--	--	--	--	--	--	--	--	--	--	--	--	--	--	--	--	--	--	--	--	--	--	--	--	--	--	--	--	--	--	--	--	--	--	--	--	--	--	--	--	--	--	--	--	--	--	--	--	--	--	--	--	--	--	--	--	--	--	--	--	--	--	--	--	--	--	--	--	--	--	--	--	--	--	--	--	--	--	--	--	--	--	--	--	--	--	--	--	--	--	--	--	--	--	--	--	--	--	--	--	--	--	--	--	--	--	--	--	--	--	--	--	--	--	--	--	--	--	--	--	--	--	--	--	--	--	--	--	--	--	--	--	--	--	--	--	--	--	--	--	--	--	--	--	--	--	--	--	--	--	--	--	--	--	--	--	--	--	--	--	--	--	--	--	--	--	--	--	--	--	--	--	--	--	--	--	--	--	--	--	--	--	--	--	--	--	--	--	--	--	--	--	--	--	--	--	--	--	--	--	--	--	--	--	--	--	--	--	--	--	--	--	--	--	--	--	--	--	--	--	--	--	--	--	--	--	--	--	--	--	--	--	--	--	--	--	--	--	--	--	--	--	--	--	--	--	--	--	--	--	--	--	--	--	--	--	--	--	--	--	--	--	--	--	--	--	--	--	--	--	--	--	--	--	--	--	--	--	--	--	--	--	--	--	--	--	--	--	--	--	--	--	--	--	--	--	--	--	--	--	--	--	--	--	--	--	--	--	--	--	--	--	--	--	--	--	--	--	--	--	--	--	--	--	--	--	--	--	--	--	--	--	--	--	--	--	--	--	--	--	--	--	--	--	--	--	--	--	--	--	--	--	--	--	--	--	--	--	--	--	--	--	--	--	--	--	--	--	--	--	--	--	--	--	--	--	--	--	--	--	--	--	--	--	--	--	--	--	--	--	--	--	--	--	--	--	--	--	--	--	--	--	--	--	--	--	--	--	--	--	--	--	--	--	--	--	--	--	--	--	--	--	--	--	--	--	--	--	--	--	--	--	--	--	--	--	--	--	--	--	--	--	--	--	--	--	--	--	--	--	--	--	--	--	--	--	--	--	--	--	--	--	--	--	--	--	--	--	--	--	--	--	--	--	--	--	--	--	--	--	--	--	--	--	--	--	--	--	--	--	--	--	--	--	--	--	--	--	--	--	--	--	--	--	--	--	--	--	--	--	--	--	--	--	--	--	--	--	--	--	--	--	--	--	--	--	--	--	--	--	--	--	--	--	--	--	--	--	--	--	--	--	--	--	--	--	--	--	--	--	--	--	--	--	--	--	--	--	--	--	--	--	--	--	--	--	--	--	--	--	--	--	--	--	--	--	--	--	--	--	--	--	--	--	--	--	--	--	--	--	--	--	--	--	--	--	--	--	--	--	--	--	--	--	--	--	--	--	--	--	--	--	--	--	--	--	--	--	--	--	--	--	--	--	--	--	--	--	--	--	--	--	--	--	--	--	--	--	--	--	--	--	--	--	--	--	--	--	--	--	--	--	--	--	--	--	--	--	--	--	--	--	--	--	--	--	--	--	--	--	--	--	--	--	--	--	--	--	--	--	--	--	--	--	--	--	--	--	--	--	--	--	--	--	--	--	--	--	--	--	--	--	--	--	--	--	--	--	--	--	--	--	--	--	--	--	--	--	--	--	--	--	--	--	--	--	--	--	--	--	--	--	--	--	--	--	--	--	--	--	--	--	--	--	--	--	--	--	--	--	--	--	--	--	--	--	--	--	--	--	--	--	--	--	--	--	--	--	--	--	--	--	--	--	--	--	--	--	--	--	--	--	--	--	--	--	--	--	--	--	--	--	--	--	--	--	--	--	--	--	--	--	--	--	--	--	--	--	--	--	--	--	--	--	--	--	--	--	--	--	--	--	--	--	--	--	--	--	--	--	--	--	--	--	--	--	--	--	--	--	--	--	--	--	--	--	--	--	--	--	--	--	--	--	--	--	--	--	--	--	--	--	--	--	--	--	--	--	--	--	--	--	--	--	--	--	--	--	--	--	--	--	--	--	--	--	--	--	--	--	--	--	--	--	--	--	--	--	--	--	--	--	--	--	--	--	--	--	--	--	--	--	--	--	--	--	--	--	--	--	--	--	--	--	--	--	--	--	--	--	--	--	--	--	--	--	--	--	--	--	--	--	--	--	--	--	--	--	--	--	--	--	--	--	--	--	--	--	--	--	--	--	--	--	--	--	--	--	--	--	--	--	--	--	--	--	--	--	--	--	--	--	--	--	--	--	--	--	--	--	--	--	--	--	--	--	--	--	--	--	--	--	--	--	--	--	--	--	--	--	--	--	--	--	--	--	--	--	--	--	--	--	--	--	--	--	--	--	--	--	--	--	--	--	--	--	--	--	--	--	--	--	--	--	--	--	--	--	--	--	--	--	--	--	--	--	--	--	--	--	--	--	--	--	--	--	--	--	--	--



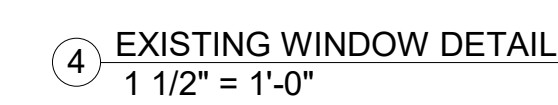
— FOUNDATION DRAINAGE SYSTEM, SEE CIVIL AND STRUCTURAL DRAWINGS



BASEMENT LEVEL

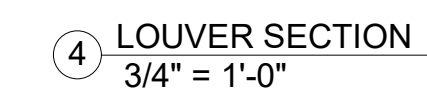
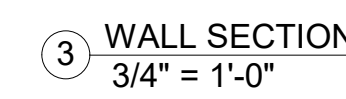
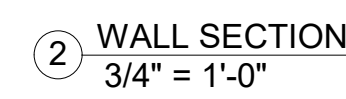
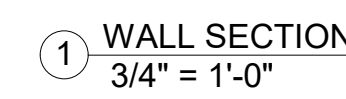


— FOUNDATION DRAINAGE SYSTEM, SEE CIVIL AND STRUCTURAL DRAWINGS



BLDG. 1 FOR CARE	Project Number	Office of Construction and Facilities Management
	437-315	
	Building Number	
PLANT	Drawing Number	

VA FORM 08-6231



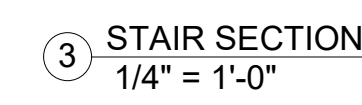
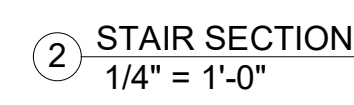
Department of
Veterans Affairs



Dwg. 43 of 128

[illegible]


1. SHEET SIZE FOR PROPER SCALE IS 30X42.
2. SEE SHEET G0.03 FOR GENERAL NOTES
3. APPLY 1 1/2" THICK FIREPROOFING AT ALL EXPOSED STRUCTURAL STEEL, DECKING, SECONDARY STRUCTURE WITHIN CEILING SPACE ABOVE BASEMENT & FIRST FLOOR LEVEL CEILING, TYP. EXCEPT STAIRS.

REFERENCE STRUCTURAL FOR STAIR DETAILS
ALL STRUCTURAL STEEL AND TUBING IS TO BE
PAINTED. SEE STRUCTURAL REFERENCE 099100
ENSURE ELEVATIONS OF DECKS, ETC. MATCH
EXISTING & PLANNED FUTURE EXPANSION
FLOOR/DECK LEVELS AND ROOF TOO.



CONSULTANTS:		
"Calibre	CALIBRE 9090 S RIDGELINE BLVD, SUITE 105 HIGHLANDS RANCH COLORADO 80129 PHONE (303) 730-0434	 Albertson Engineering Inc.
	ALBERTSON ENGINEERING INC. 3202 W MAIN ST C. RAPID CITY, SOUTH DAKOTA 57702 PHONE (605) 343-9606	 SUMMIT FIRE CONSULTING 575 MINNEHAHA AVE WEST ST. PAUL, MINNESOTA 55103 (612) 387-7050



Drawing Title ENLARGED STAIR PLAN(S) AND SECTIONS		Project Title EXPAND BLDG. 1 FOR PRIMARY CARE		Project Number 437-315		Office of Construction and Facilities Management
				Building Number 1		
Approved: Project Director FARGO VAHCS		Location 2101 ELM STREET FARGO, ND 58102		Drawing Number A4.00		 Department of Veterans Affairs
		Date 11/16/21	Checked JS	Drawn JGC	Dwg. 45 of 128	

CONSTRUCTION DOCUMENTS

Office of
Construction
and Facilities
Management

Department of
Veterans Affairs

11/18/2021 10:44:14 AM

GENERAL NOTES:

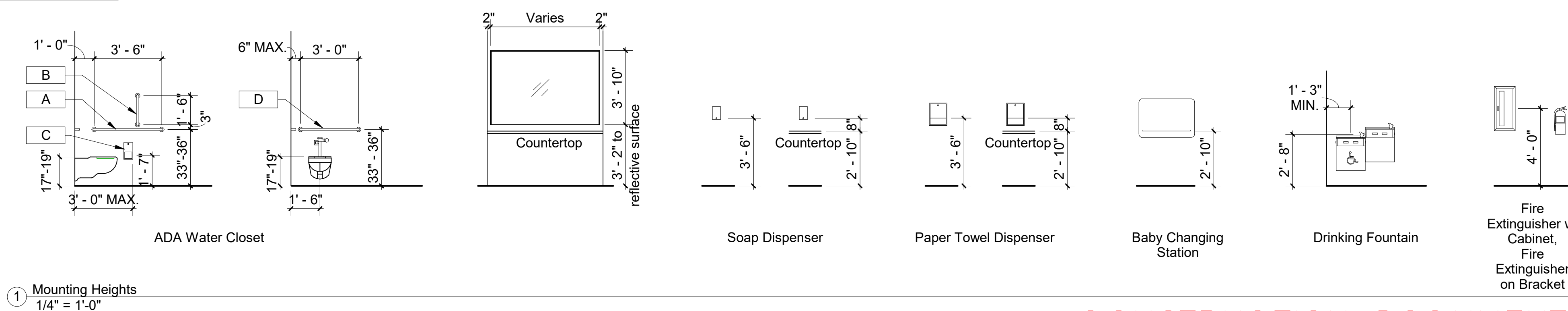
1. SHEET SIZE FOR PROPER SCALE IS 30X42.
2. SEE SHEET G0.03 FOR GENERAL NOTES
3. APPLY 1 1/2" THICK FIREPROOFING AT ALL EXPOSED STRUCTURAL STEEL DECKING SECONDARY STRUCTURE WITHIN CEILING SPACE ABOVE BASEMENT & FIRST FLOOR LEVEL CEILING. TYP. EXCEPT STAIRS.

Room Finish Schedule

Number	Name	Floor Finish	Base Finish	Walls				Ceiling Finish	Comments
				West	East	North	South		
1D -121	CORRIDOR	LVT-1	PRB	P-1	P-1	P-1	P-1	ACT-1	
1D -171	EXAM	LVT-2	RB-1	P-1	P-1	P-3	P-1	ACT-1	
1D -172	EXAM	LVT-2	RB-1	P-1	P-1	P-3	P-1	ACT-1	
1D -173	WORK ROOM	CPT-1/LVT-2	RB-1	P-4	P-1	P-1	P-1	ACT-1	
1D -174	EXAM	LVT-2	RB-1	P-1	P-1	P-3	P-1	ACT-1	
1D -175	EXAM	LVT-2	RB-1	P-1	P-1	P-3	P-1	ACT-1	
1D -176	BARiatric EXAM	LVT-2	RB-1	P-1	P-1	P-3	P-1	ACT-1	
1D -177	EXAM	LVT-2	RB-1	P-3	P-1	P-1	P-1	ACT-1	
1D -178	HAC	QT-1	QT-COVE	P-1/FRP	P-1/FRP	P-1/FRP	P-1/FRP	ACT-1	
1D -179	EXAM	LVT-2	RB-1	P-3	P-1	P-1	P-1	ACT-1	
1D -180	CLEAN LINEN	LIN-1	LIN-1	P-1	P-1	P-1	P-1	ACT-1	
1D -181	EXAM	LVT-2	RB-1	P-3	P-1	P-1	P-1	ACT-1	
1D -182	TOILET	PT-1	PT-COVE	P-1/PT-2/PT-3	P-1/PT-2/PT-3	P-1/PT-2/PT-3	P-1/PT-2/PT-3	ACT-1	
1D -183	SOILED LINEN	LIN-1	LIN-1	P-1	P-1	P-1	P-1	ACT-1	
1D -184	EXAM	LVT-2	RB-1	P-1	P-1	P-1	P-3	ACT-1	
1D -185	EXAM	LVT-2	RB-1	P-1	P-1	P-1	P-3	ACT-1	
1D -186	EXAM	LVT-2	RB-1	P-1	P-1	P-1	P-3	ACT-1	
1D -187	EXAM	LVT-2	RB-1	P-1	P-1	P-1	P-3	ACT-1	
1D -188	BREAK ROOM	LVT-2	RB-1	P-4	P-1	P-1	P-1	ACT-1	
1D -188A	STAFF TLT	PT-1	PT-COVE	P-1/PT-2/PT-3	P-1/PT-2/PT-3	P-1/PT-2/PT-3	P-1/PT-2/PT-3	GYP	
1D -189	EXAM	LVT-2	RB-1	P-1	P-1	P-3	P-1	ACT-1	
1D -190	EXAM	LVT-2	RB-1	P-1	P-1	P-3	P-1	ACT-1	
1D -191	WELLNESS	CPT-1	RB-1	P-1	P-1	P-4	P-4	ACT-1/GYP	
1D -191A	EQUIP STG	LIN-1	LIN-1	P-1	P-1	P-1	P-1	ACT-1	
1D -192	PHARMACY OFFICE	CPT-1	RB-1	P-1	P-3	P-1	P-1	ACT-1	
1D -193	RECEPTION WAITING	CPT-1	RB-1	P-1	P-1	P-4	P-4	ACT-1	
1D -194	LOGISTICS STG	LIN-1	LIN-1	P-1	P-1	P-1	P-1	ACT-1	
1D -195	ELECT	CONC	RB-1	P-1	P-1	P-1	P-1	OPEN TO STRUCTURE	
1D -196	OFFICE	CPT-1	RB-1	P-4	P-1	P-1	P-1	ACT-1	
1D -197	OFFICE	CPT-1	RB-1	P-1	P-4	P-1	P-1	ACT-1	
1D -198	OFFICE	CPT-1	RB-1	P-1	P-4	P-1	P-1	ACT-1	
1D -199	OFFICE	CPT-1	RB-1	P-4	P-1	P-1	P-1	ACT-1	
BD - 110	STANDALONE PRIMARY	LIN-1	LIN-1	P-1	P-1	P-1	P-1	ACT-1	
BD - 112	EMS WORKROOM	CPT-1	RB-1	P-4	P-1	P-1	P-1	ACT-1	
BD - 113	OFFICE PROGRAM SUPPORT ASST	CPT-1	RB-1	P-1	P-1	P-4	P-1	ACT-1	
BD - 114	OFFICE	CPT-1	RB-1	P-1	P-1	P-4	P-1	ACT-1	
BD - 115	CART STORAGE	LIN-1	LIN-1	P-1	P-1	P-1	P-1	OPEN TO STRUCTURE	
BD - 116	EQUIPMENT STORAGE	LIN-1	LIN-1	P-1	P-1	P-1	P-1	OPEN TO STRUCTURE	
BD - 117	MECHANICAL	CONC	RB-1	P-1	P-1	P-1	P-1	OPEN TO STRUCTURE	
BD - 118	MEN'S LOCKER ROOM	PT-1	PT-COVE	P-1	P-1	P-1	P-1	ACT-1/GYP	
BD - 118A	MEN'S SHOWER	PT-1	PT-COVE	P-1/PT-2/PT-3	P-1/PT-2/PT-3	P-1/PT-2	P-1/PT-2/PT-3	ACT-1/GYP	SEE ELEVATIONS FOR TILE LAYOUT
BD - 118B	MEN'S TOILET	PT-1	PT-COVE	P-1/PT-2/PT-3	P-1/PT-2/PT-3	P-1/PT-2/PT-3	P-1/PT-2/PT-3	ACT-1/GYP	SEE ELEVATIONS FOR TILE LAYOUT
BD - 119	WOMEN'S LOCKER ROOM	PT-1	PT-COVE	P-1	P-1	P-1	P-1	ACT-1/GYP	
BD - 119A	WOMEN'S SHOWER	PT-1	PT-COVE	P-1/PT-2/PT-3	P-1/PT-2/PT-3	P-1/PT-2/PT-3	P-1/PT-2/PT-3	ACT-1/GYP	SEE ELEVATIONS FOR TILE LAYOUT
BD - 119B	WOMEN'S TOILET	PT-1	PT-COVE	P-1/PT-2/PT-3	P-1/PT-2/PT-3	P-1/PT-2/PT-3	P-1/PT-2/PT-3	ACT-1/GYP	SEE ELEVATIONS FOR TILE LAYOUT
BD - 120	GEMS STORAGE	LIN-1	LIN-1	P-1	P-1	P-1	P-1	OPEN TO STRUCTURE	
BD - 121	HOUSEKEEPING EXPENDABLES	LIN-1	LIN-1	P-1	P-1	P-1	P-1	OPEN TO STRUCTURE	
BD - 122	LEADS WORKROOM	CPT-1	RB-1	P-1	P-4	P-1	P-1	ACT-1	
BD - 123	STAFF LOUNGE	LVT-2	RB-1	P-4	P-1	P-1	P-1	ACT-1	
BD - 124	OFFICE SUPERVISORS	CPT-1	RB-1	P-1	P-1	P-4	P-1	ACT-1	
BD - 125	OFFICE GEMS COORDINATOR	CPT-1	RB-1	P-1	P-1	P-1	P-4	ACT-1	
BD - 126	SECRETARY OFFICE	CPT-1	RB-1	P-1	P-4	P-1	P-1	ACT-1	
BD - 127	OFFICE EMS CHIEF	CPT-1	RB-1	P-4	P-1	P-1	P-1	ACT-1	
BD - 128	OFFICE EMS ASST CHIEF	CPT-1	RB-1	P-1	P-4	P-1	P-1	ACT-1	
BD - 129	OFFICE ADMIN OFFICER	CPT-1	RB-1	P-4	P-1	P-1	P-1	ACT-1	
BD - 130	CONFERENCE ROOM	CPT-1	RB-1	P-1	P-4	P-1	P-1	ACT-1	
BD - 130A	ELECTRICAL	CONC	RB-1	P-1	P-1	P-1	P-1	OPEN TO STRUCTURE	
BD - 131	OFFICE	CPT-1	RB-1	P-1	P-1	P-4	P-1	ACT-1	
BD - 132	TOILET	PT-1	PT-COVE	P-1/PT-2/PT-3	P-1/PT-2/PT-3	P-1/PT-2/PT-3	P-1/PT-2/PT-3	GYP	
BD - 133	WET ROOM	PT-1	PT-COVE	PT-2	PT-2	PT-2	PT-2	ACT-1	
CO01	CORRIDOR	LVT-1	RB-1	P-1	P-1	P-1	P-1	ACT-1	
CO02	CORRIDOR	LVT-1	RB-1	P-1	P-1	P-1	P-1	ACT-1	
CO03	CORRIDOR	LVT-1	RB-1	P-1	P-1	P-1	P-1	ACT-1	
CO04	CORRIDOR	LVT-1	RB-1	P-1	P-1	P-1	P-1	ACT-1	
CO05	CORRIDOR	LVT-1	RB-1	P-1	P-1	P-1	P-1	ACT-1	
CO06	CORRIDOR	LVT-1	RB-1	P-1	P-1	P-1	P-1	ACT-1	
E1D -108	OFFICE (M.H.)	EXISTING	EXISTING	EXISTING	EXISTING	EXISTING	EXISTING	EXISTING	
E1D -110	CONSULT (M.H.)	EXISTING	EXISTING	EXISTING	EXISTING	EXISTING	EXISTING	EXISTING	
E1D -112	OFFICE (M.H.)	EXISTING	EXISTING	EXISTING	EXISTING	EXISTING	EXISTING	EXISTING	
E1D -116	CONSULT PHARM	CPT-1	RB-1	P-1	P-1	P-1	P-4	ACT-1	
E1D -120	WORK ROOM (P.C. DOC'S)	CPT-1	RB-1	P-1	P-1	P-1	P-4	ACT-1	
E1D -128	LOCKER	EXISTING	EXISTING	EXISTING	EXISTING	EXISTING	EXISTING	EXISTING	
E1D -129	CONF	EXISTING	EXISTING	EXISTING	EXISTING	EXISTING	EXISTING	EXISTING	
E1D -130	STAFF BREAK ROOM	EXISTING	EXISTING	EXISTING	EXISTING	EXISTING	EXISTING	EXISTING	
EBD - 70	MECHANICAL ROOM	EXISTING	EXISTING	EXISTING	EXISTING	EXISTING	EXISTING	EXISTING	
EBD - 80	STORAGE	EXISTING	EXISTING	EXISTING	EXISTING	EXISTING	EXISTING	EXISTING	
STAIRWELL #24	STAIRWELL #24	RF-1	RB-1	P-1	P-1	P-1	P-1	OPEN TO STRUCTURE	
STAIRWELL #24	STAIRWELL #24	RF-1	RB-1	P-1	P-1	P-1	P-1	OPEN TO STRUCTURE	

Toilet Room Accessory...

- A 42" Grab bar
B 18" Grab bar
C Toilet paper dispenser
D 36" Grab bar



CONSTRUCTION DOCUMENTS

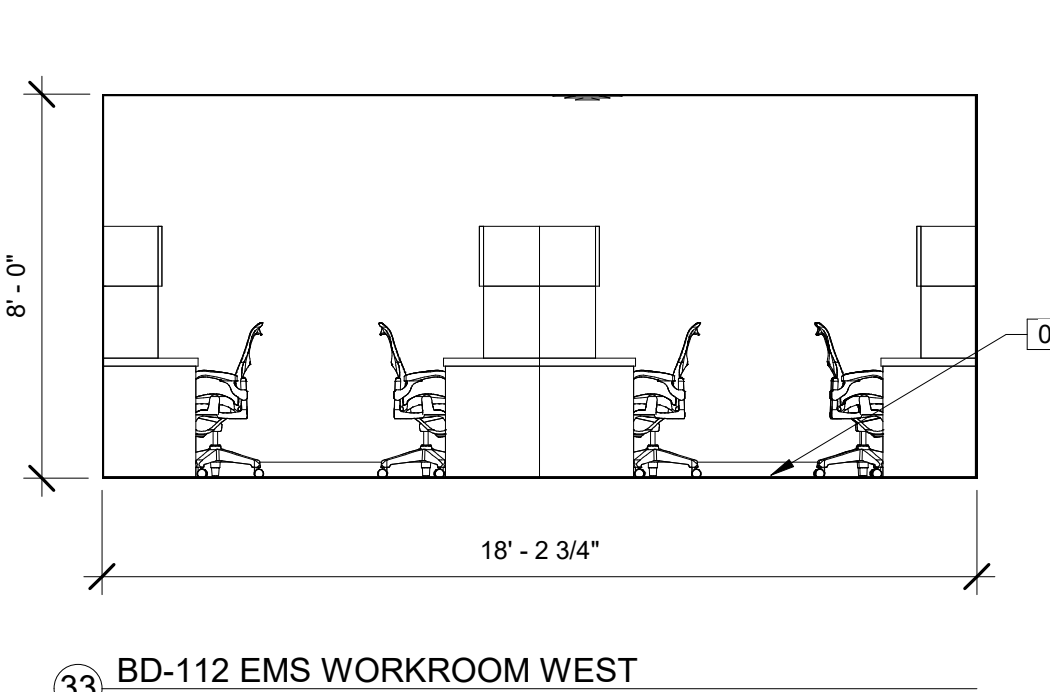
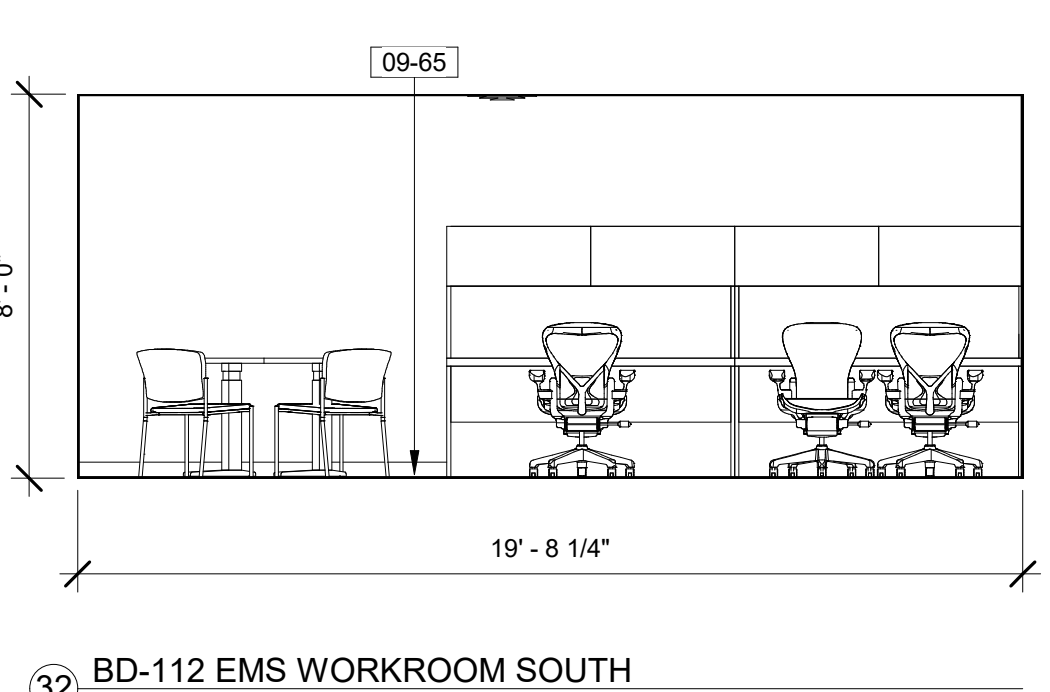
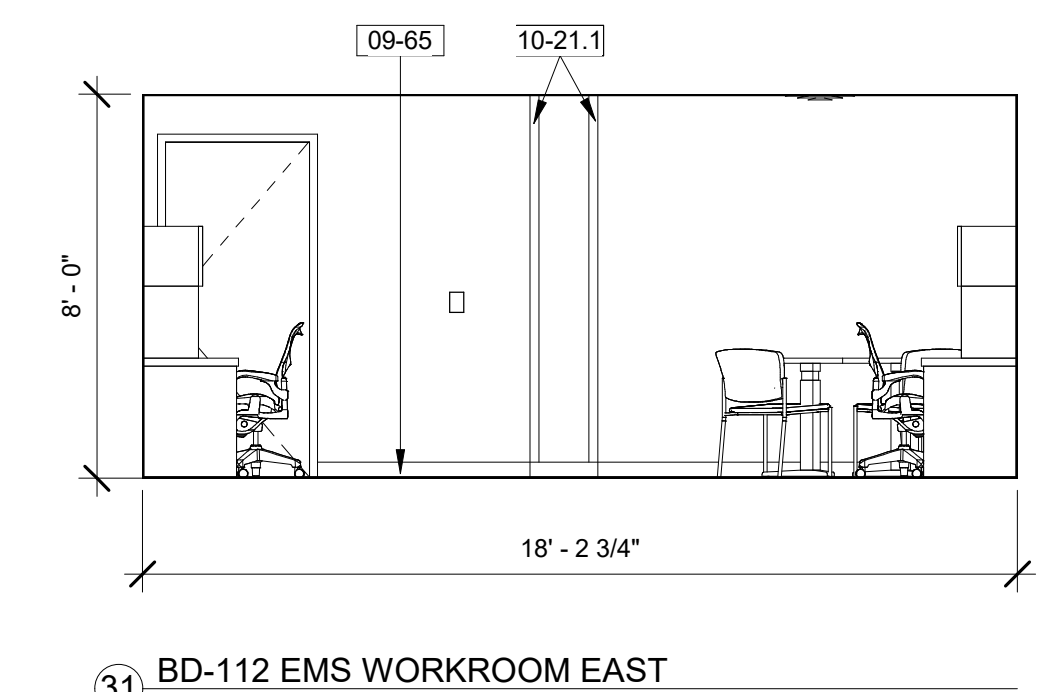
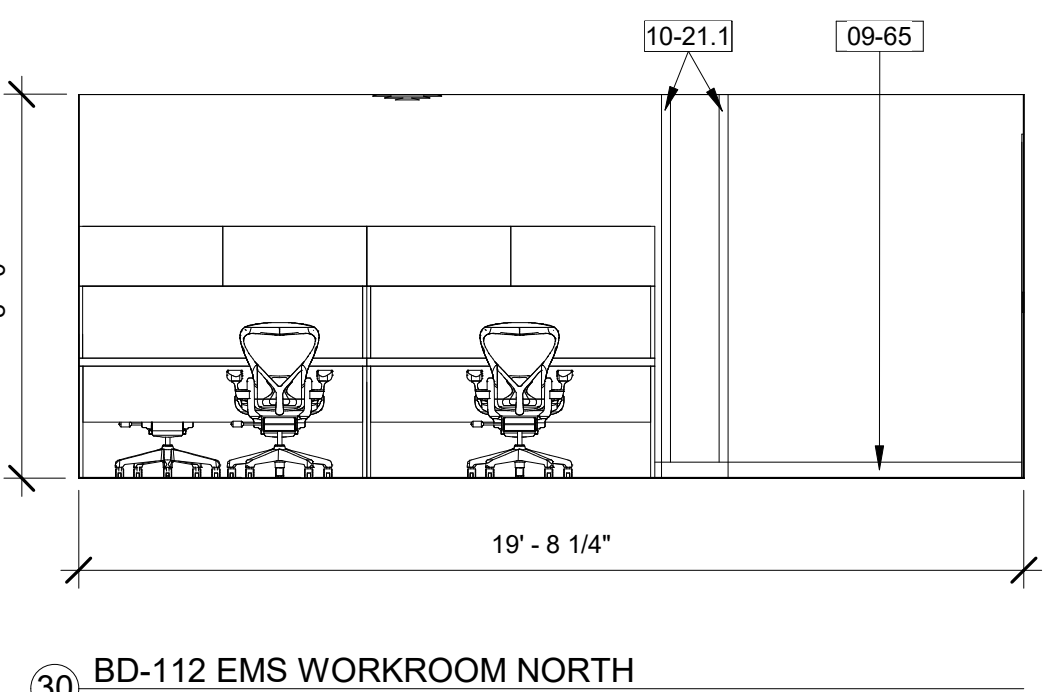
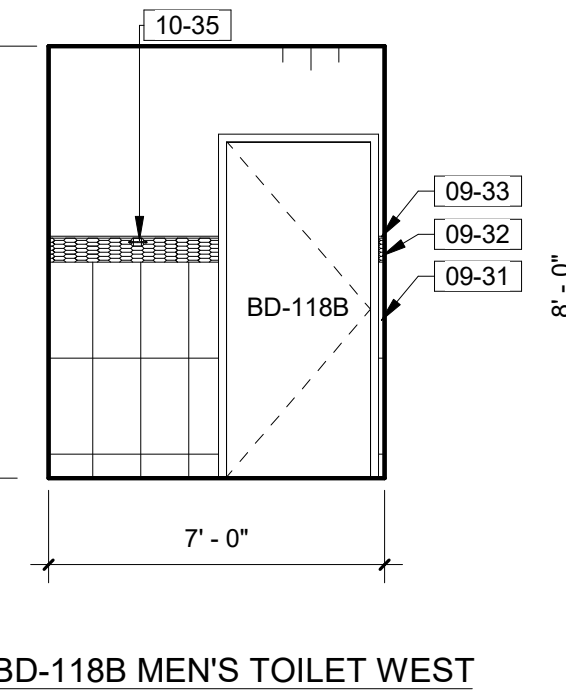
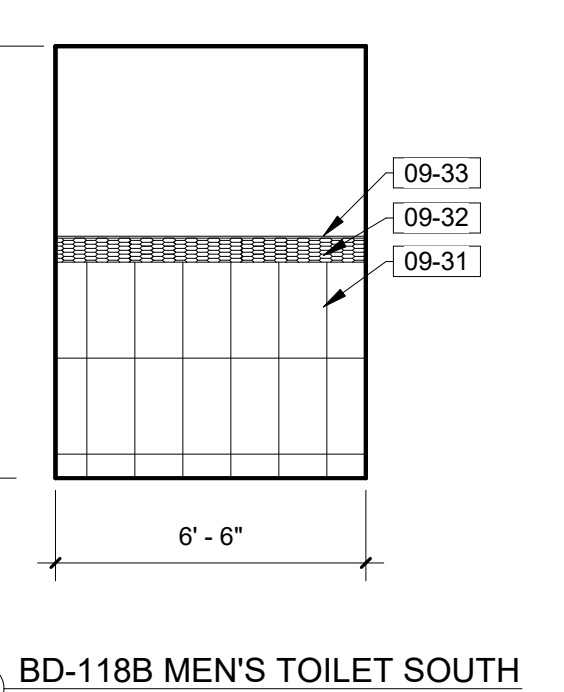
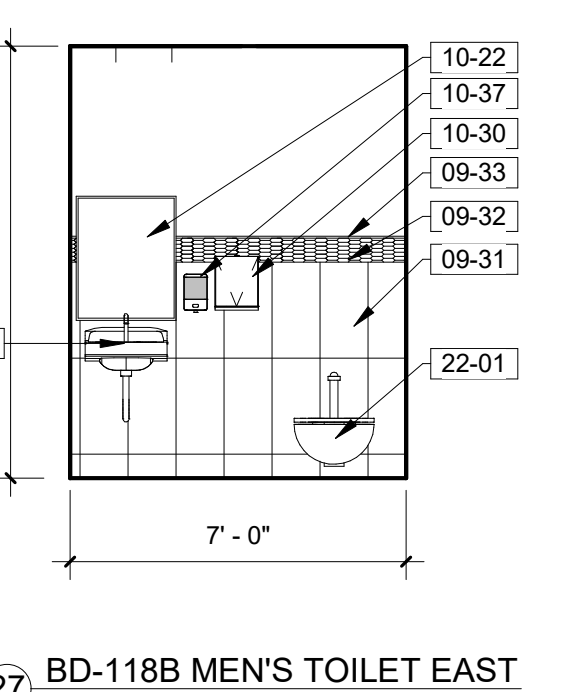
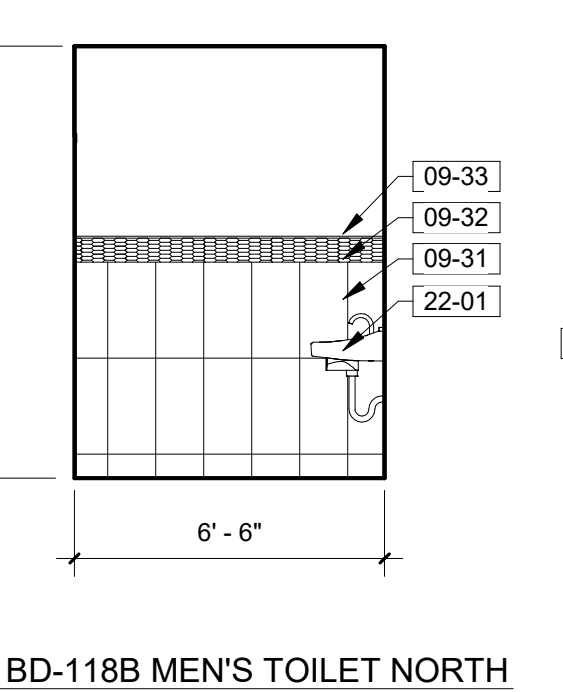
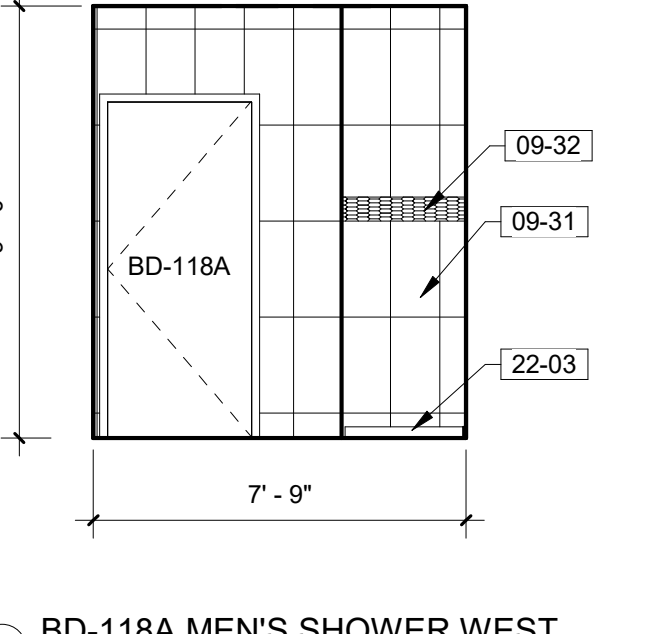
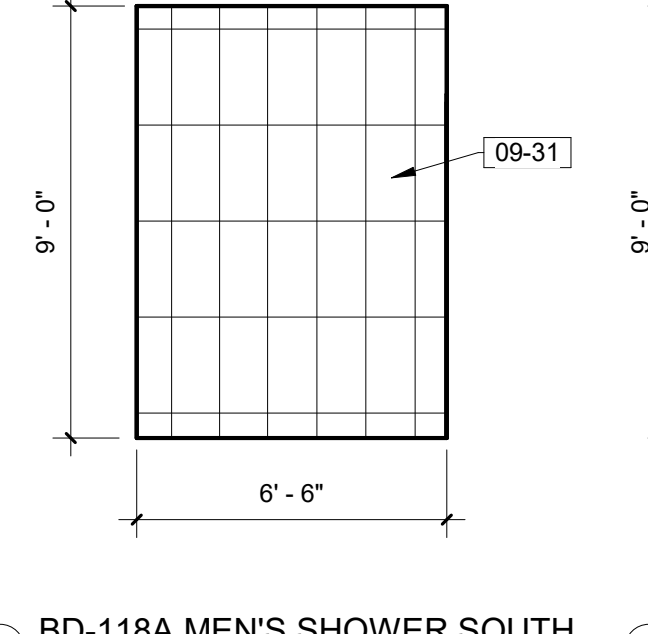
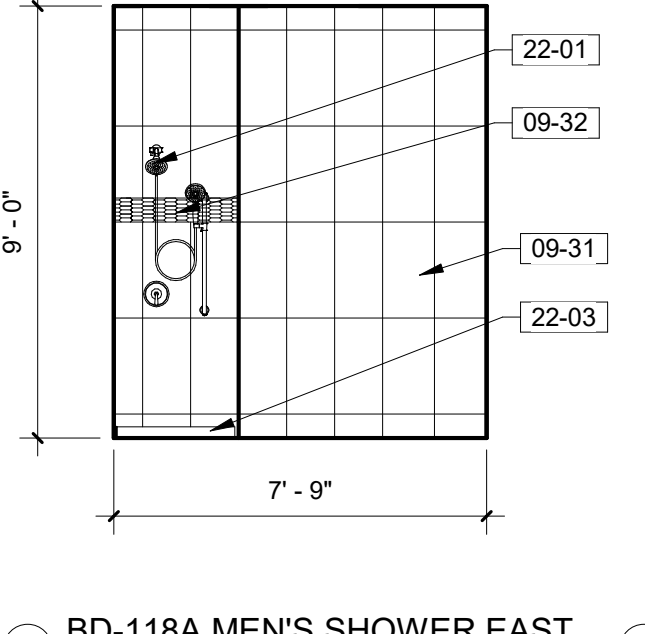
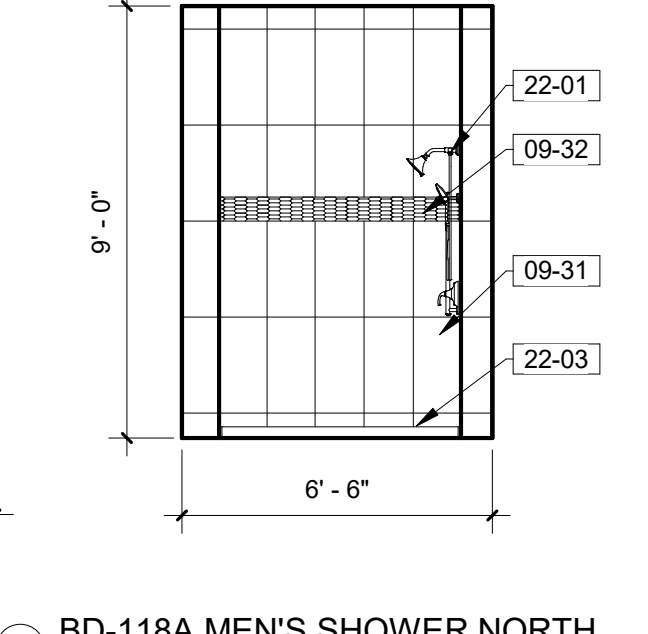
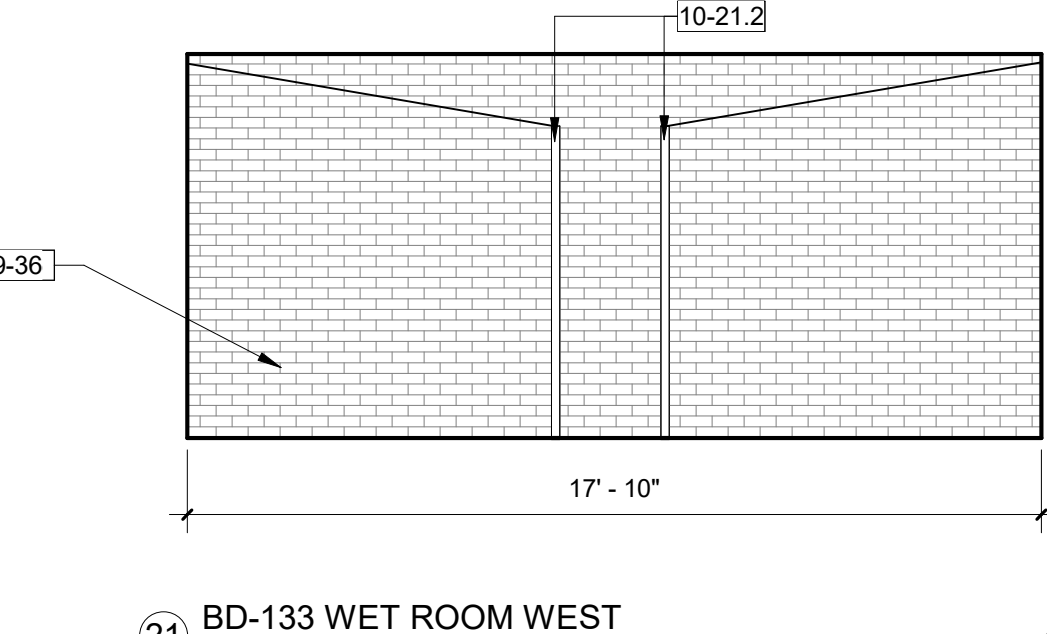
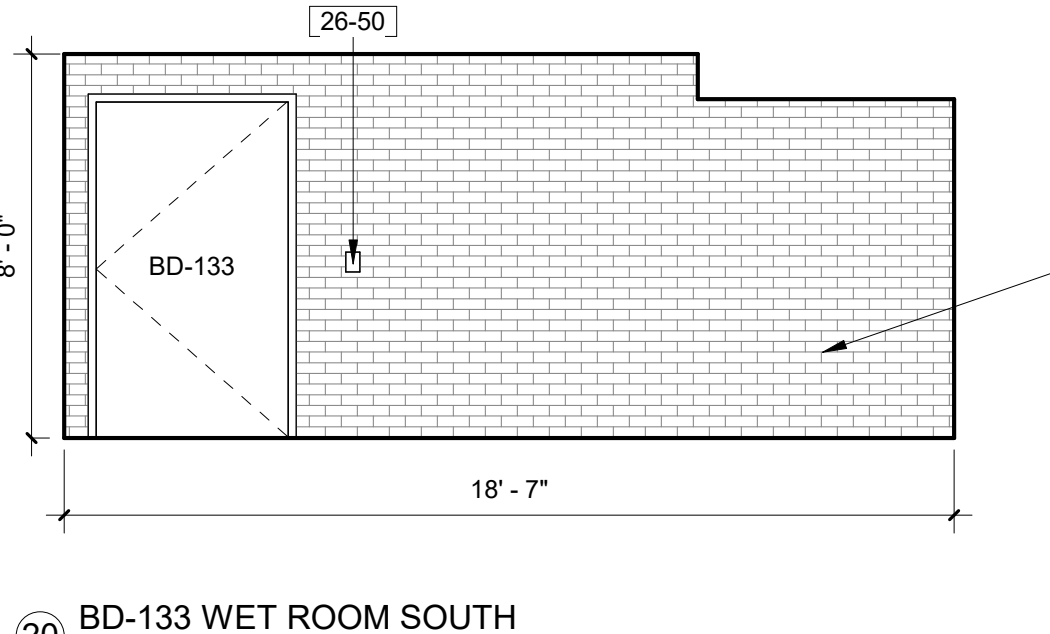
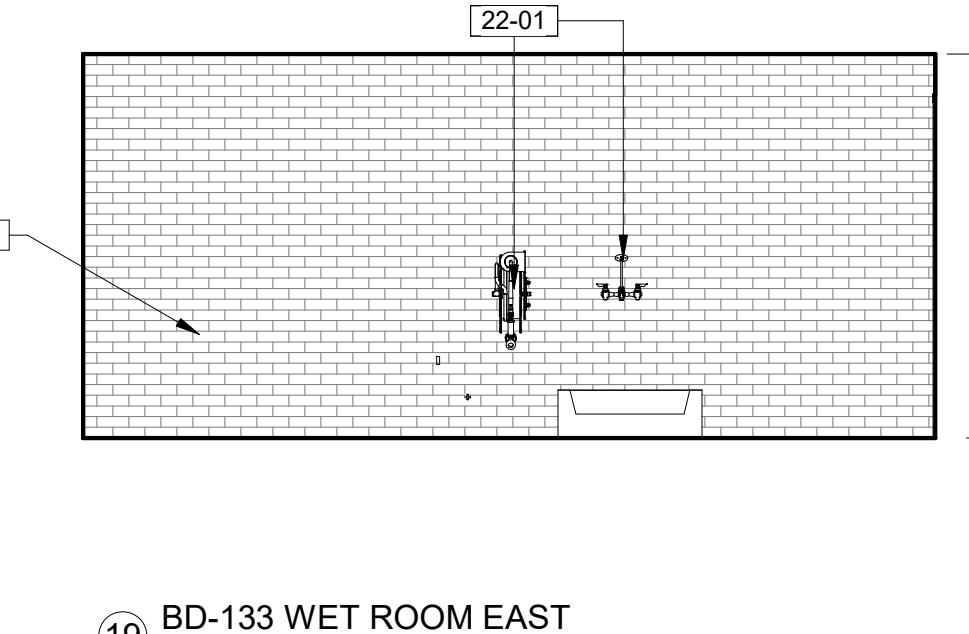
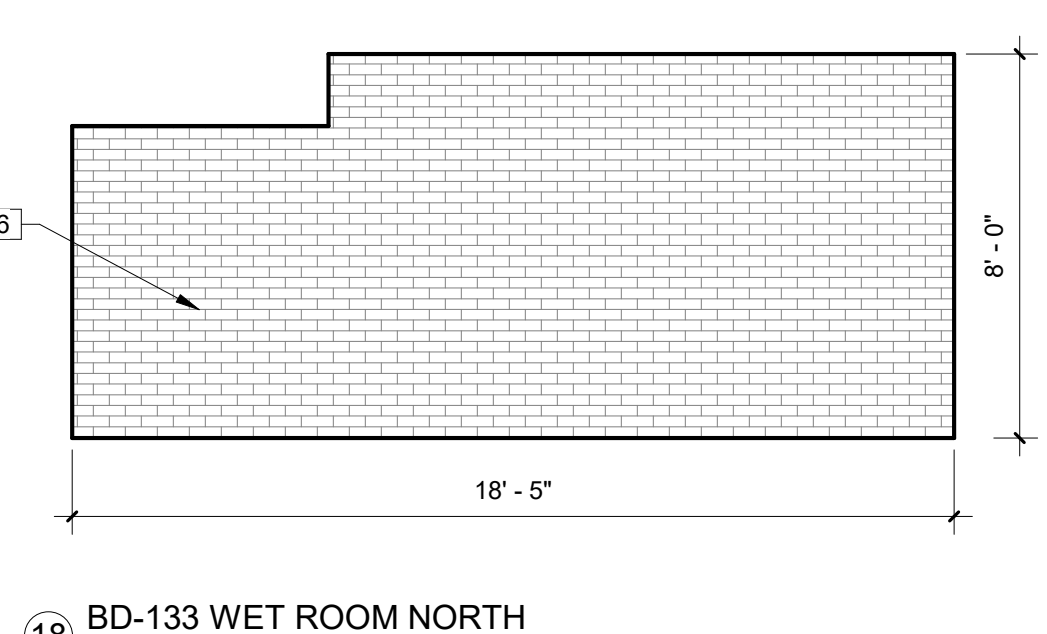
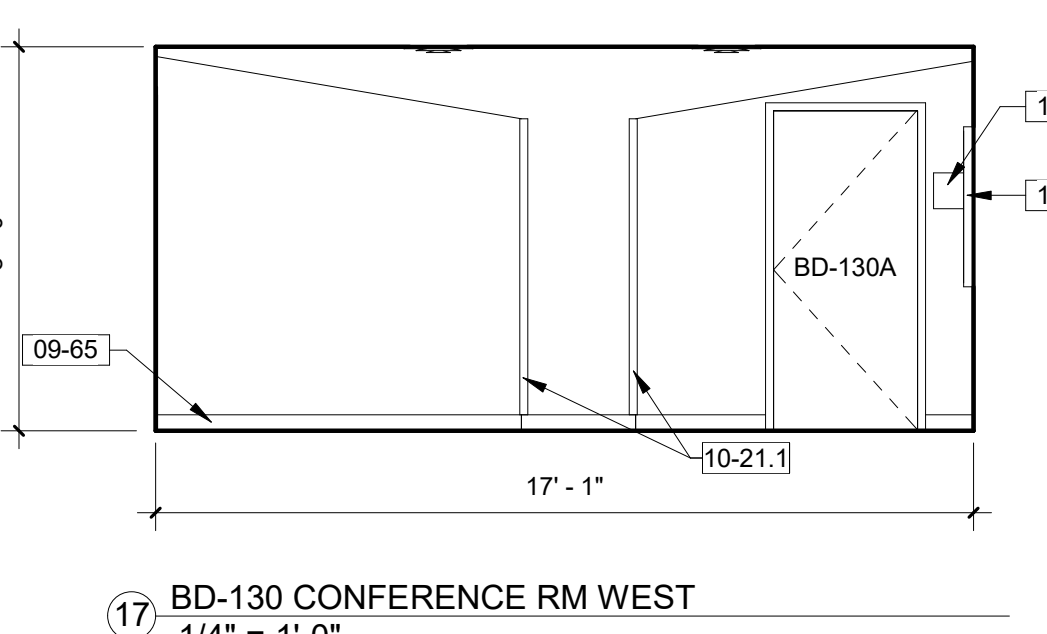
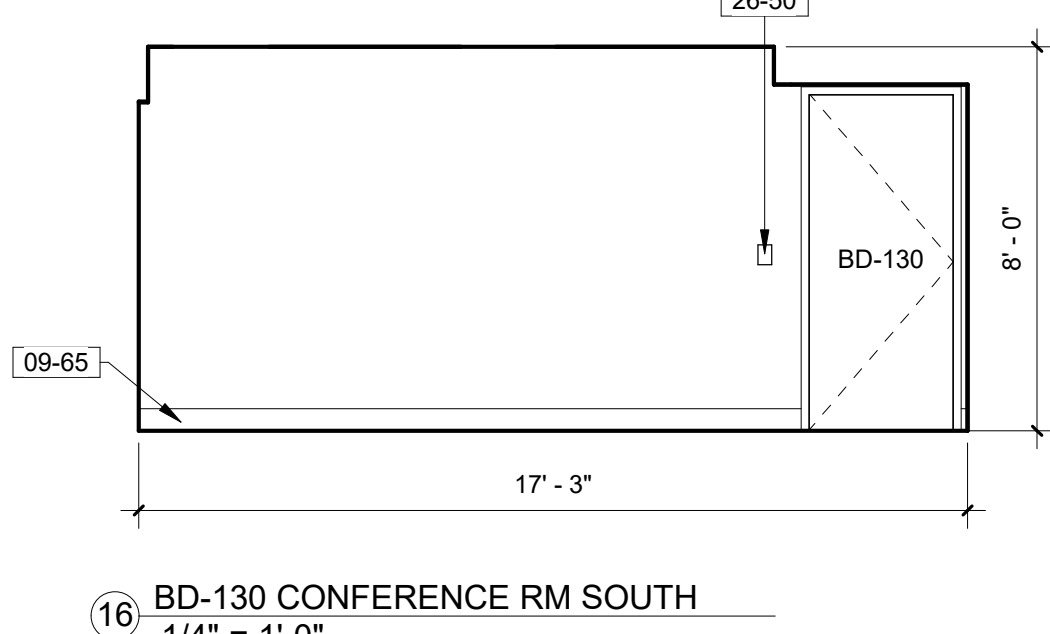
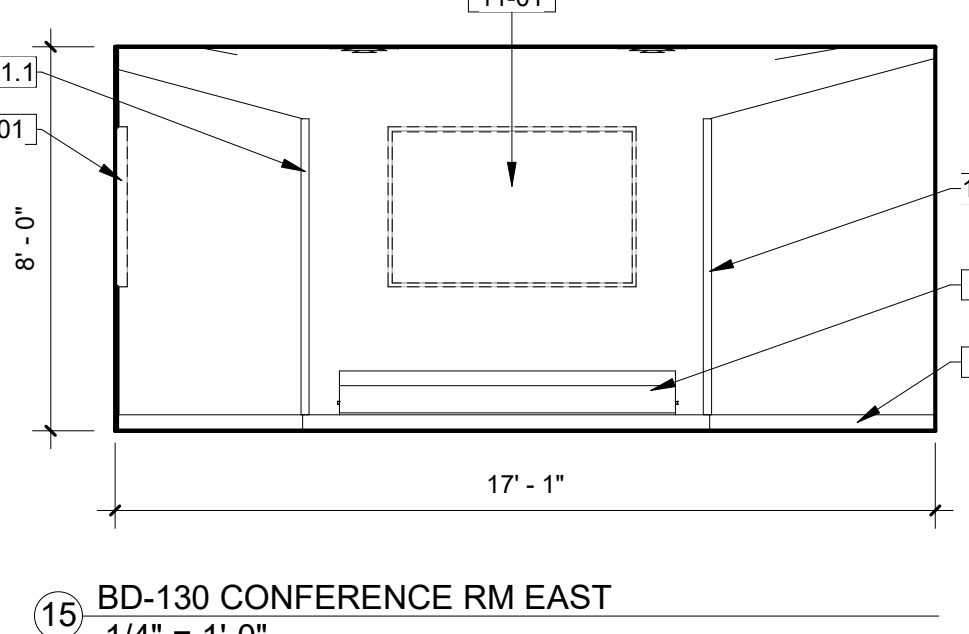
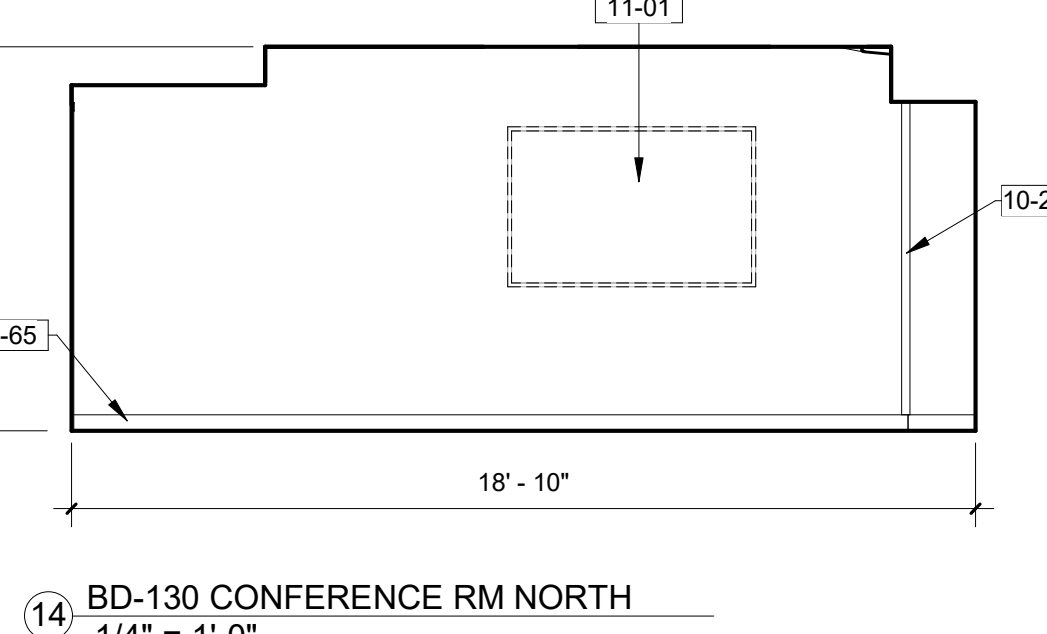
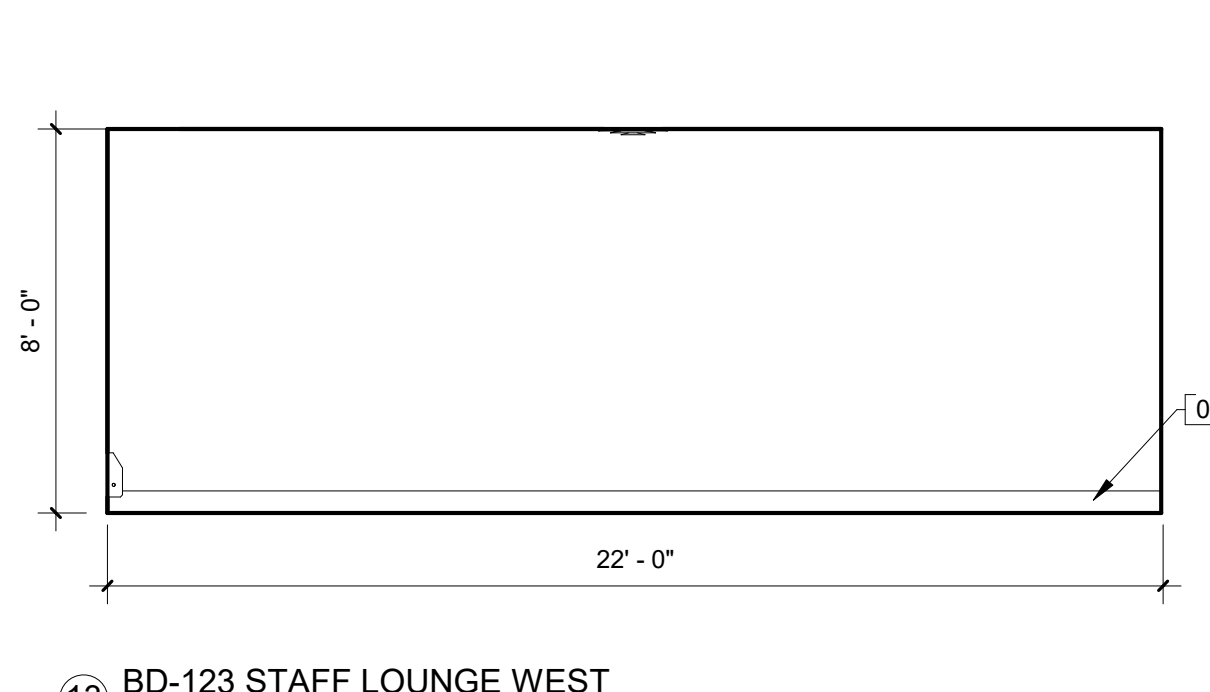
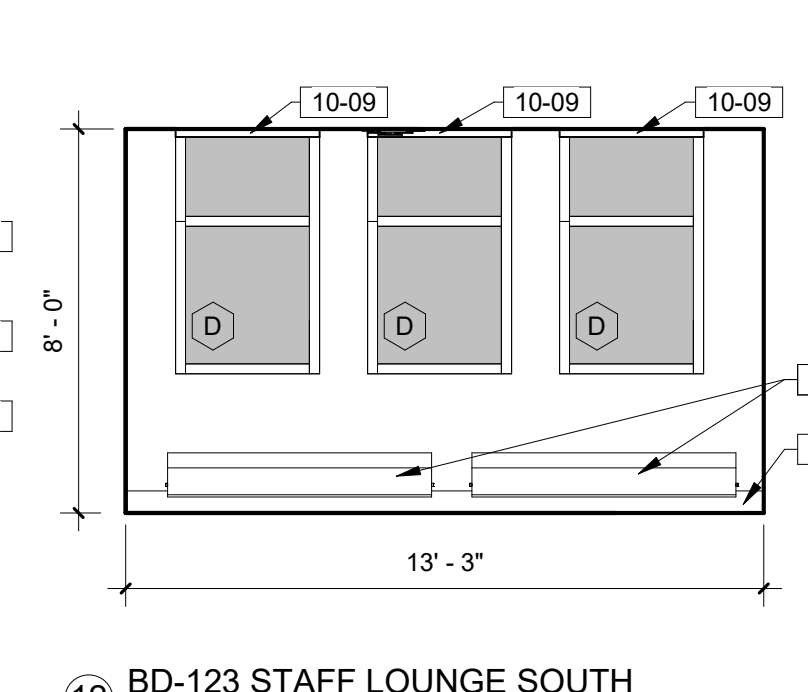
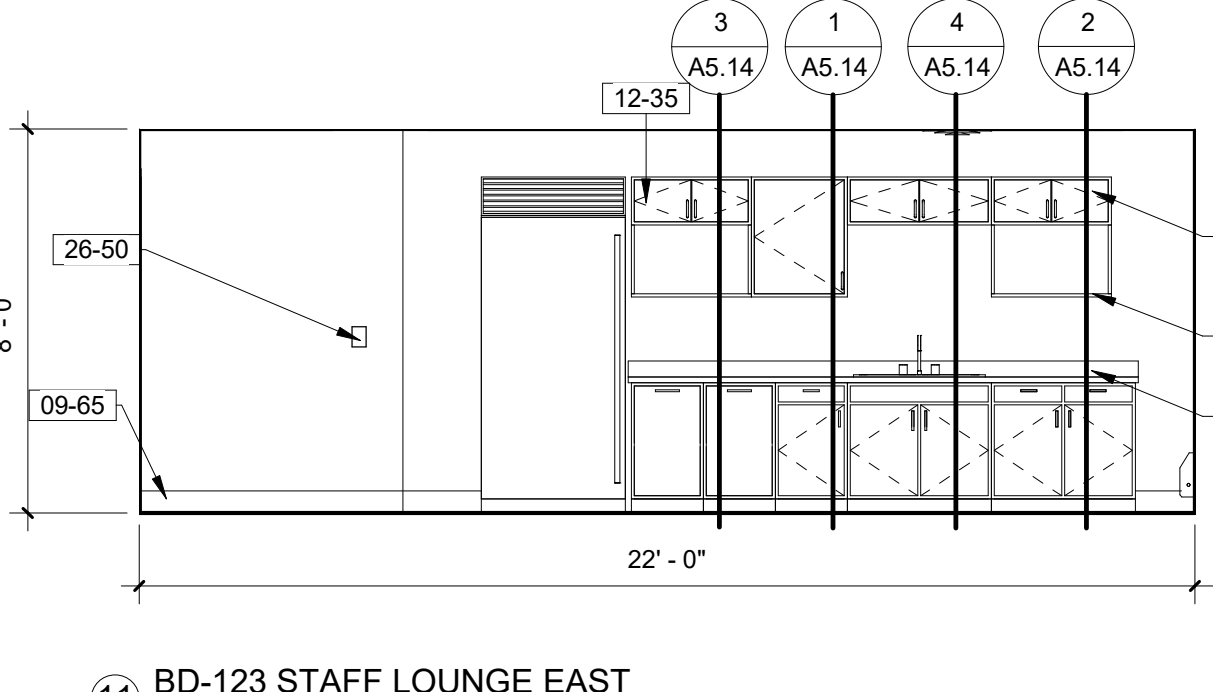
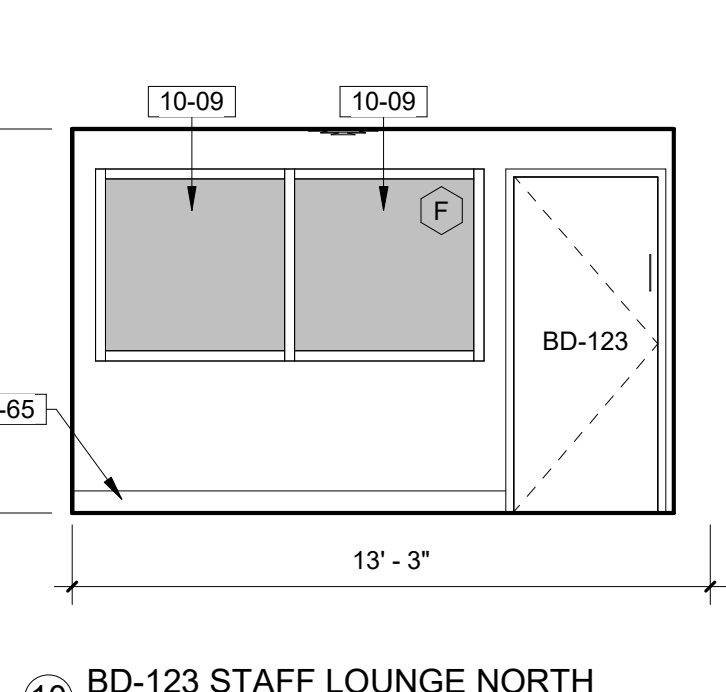
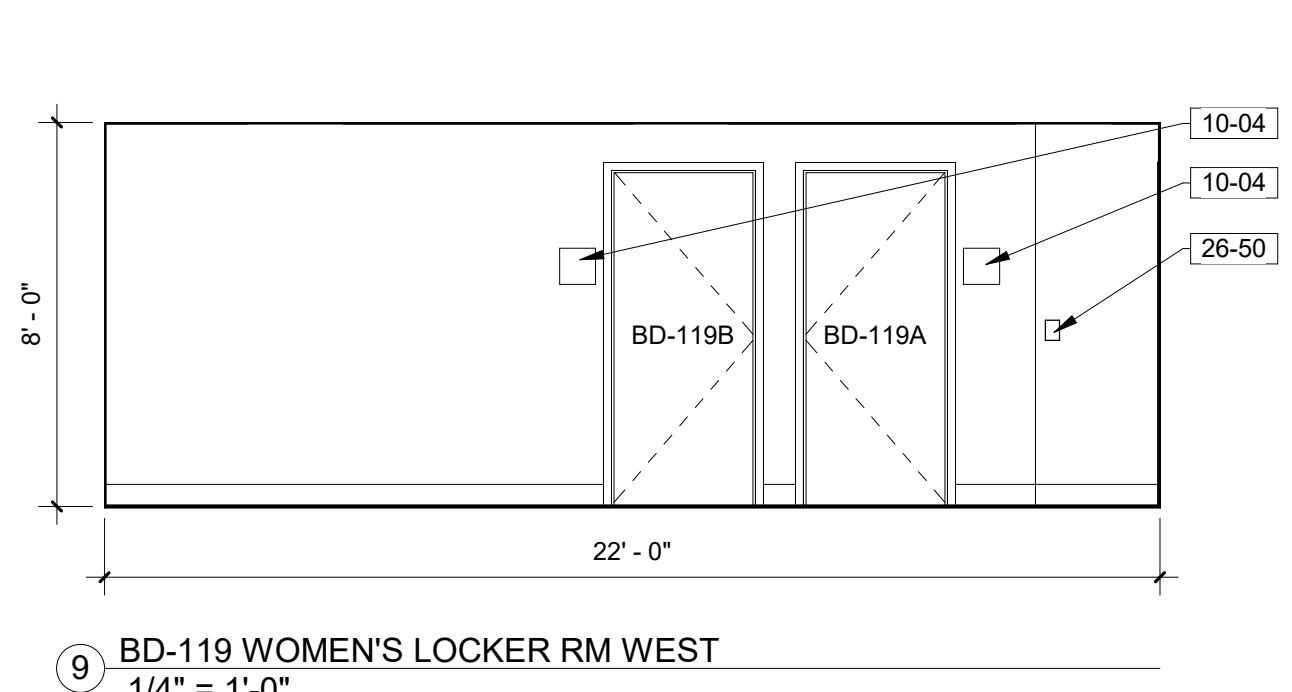
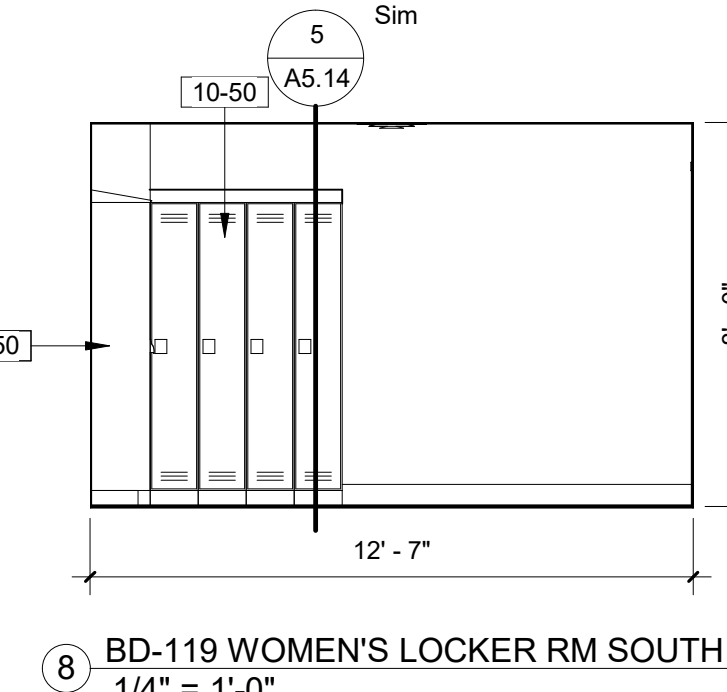
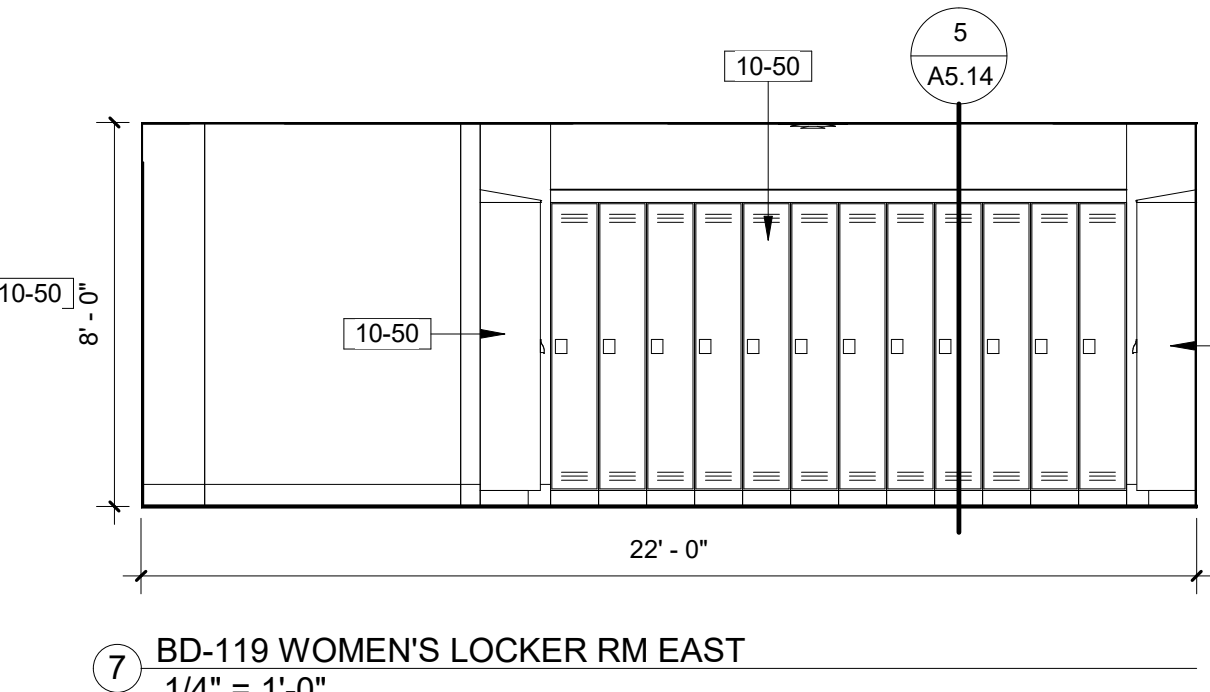
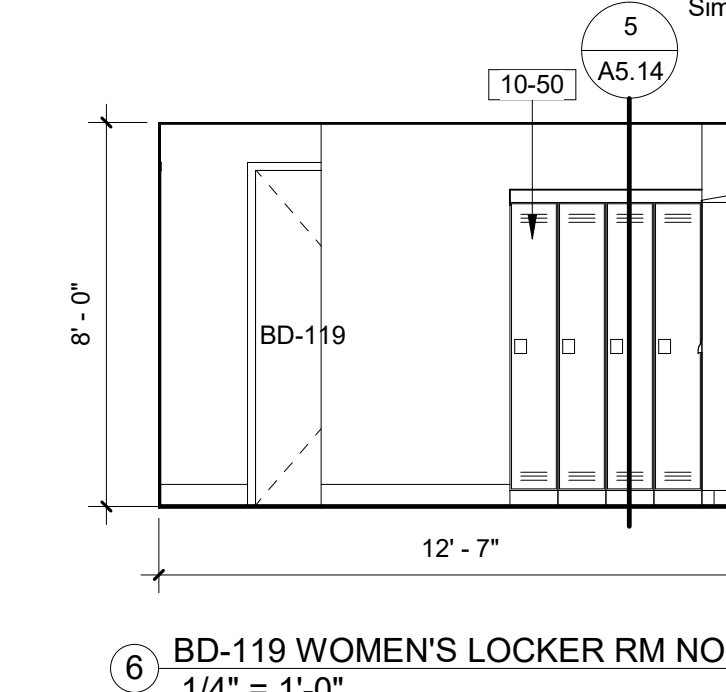
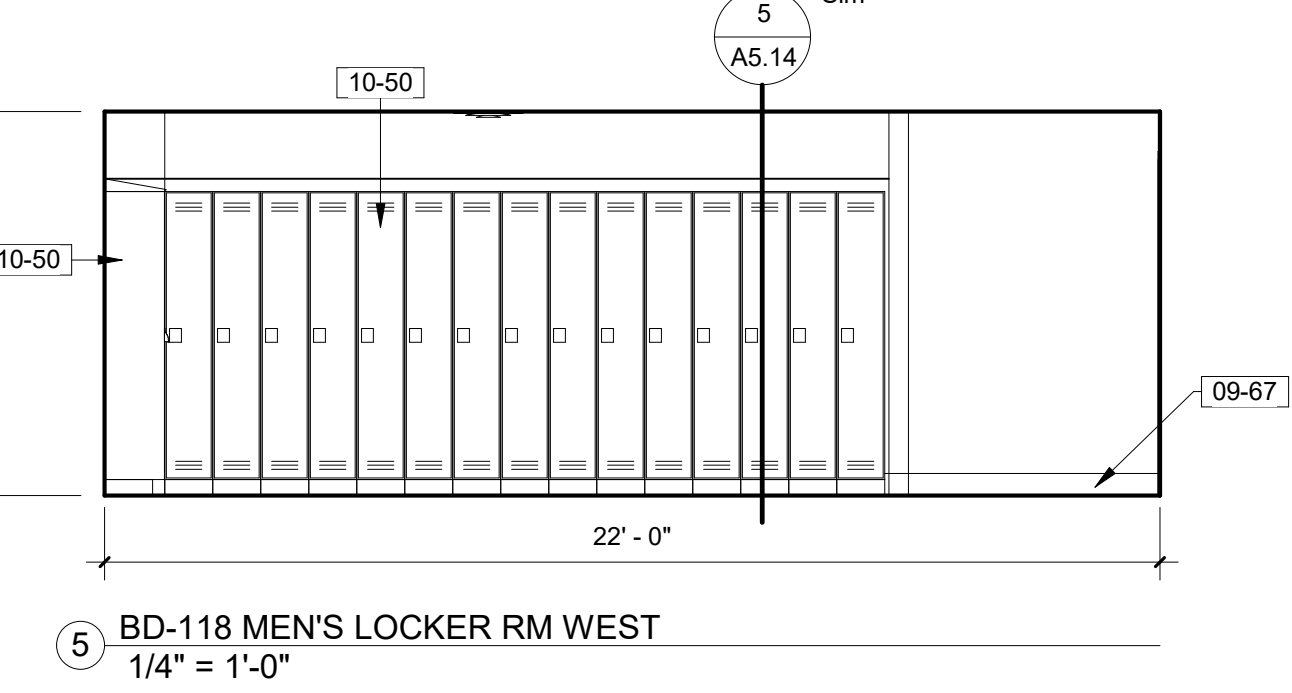
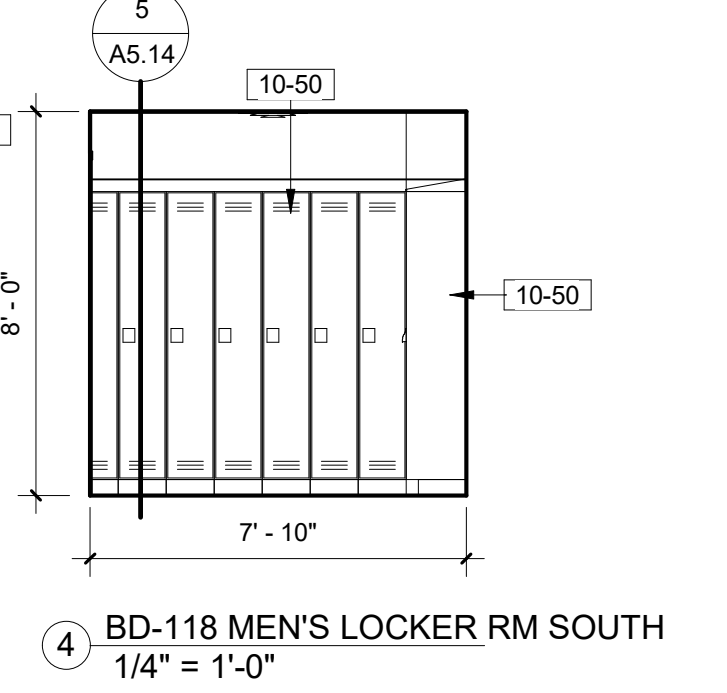
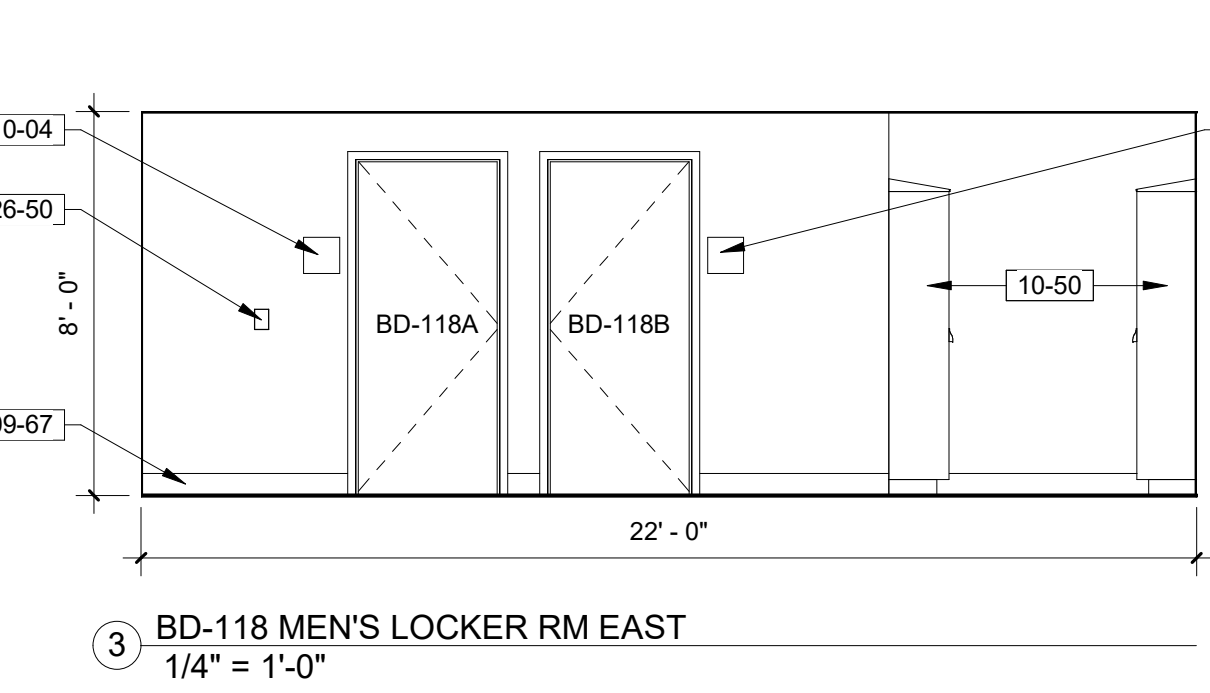
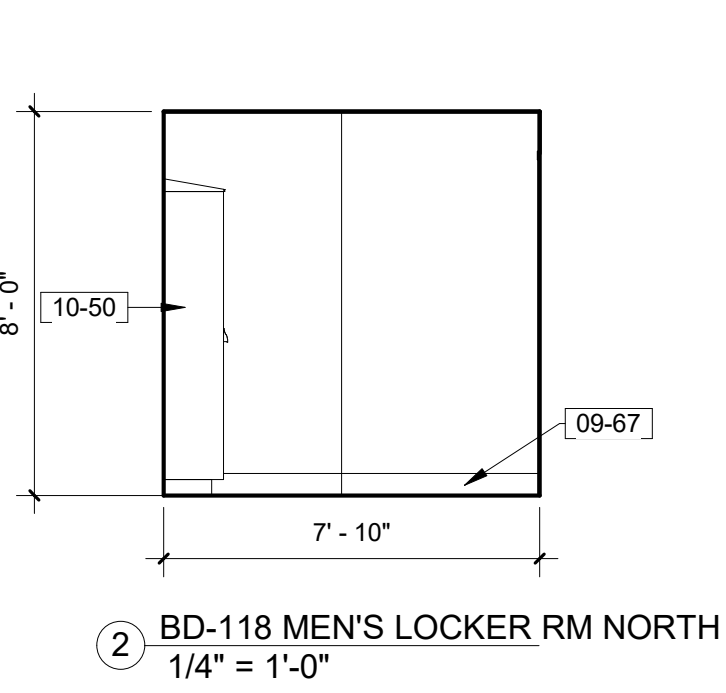
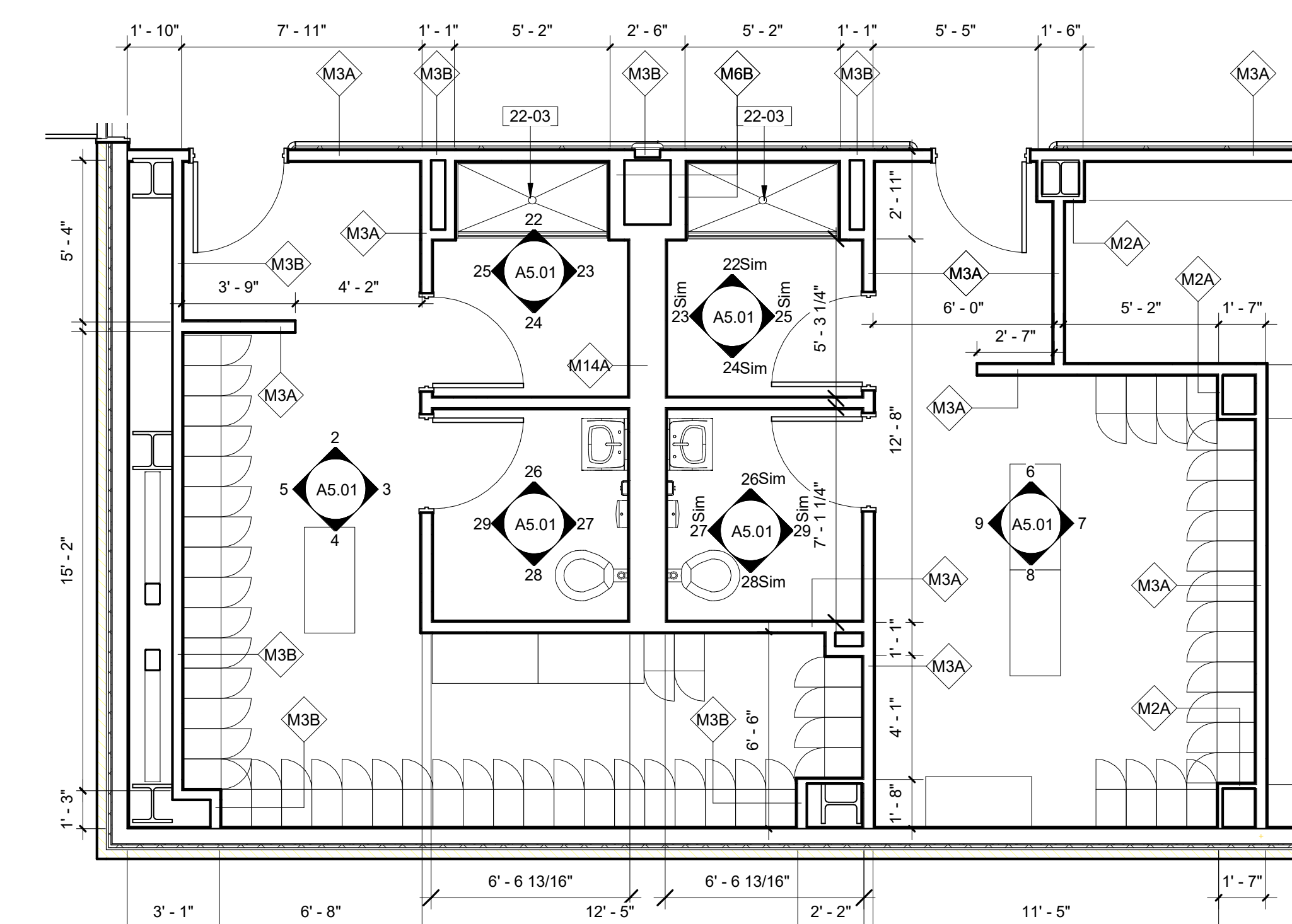
11/18/2021 10:44:28 AM	Revisions:	Date	CONSULTANTS: Calibre CALIBRE 9090 S RIDGELINE BLVD, SUITE 105 HIGHLANDS RANCH, COLORADO 80129 PHONE (303) 730-0434 Albertson Engineering Inc. SUMMIT FIRE PROTECTION	ALBERTSON ENGINEERING INC. 3202 W MAIN ST C RAPID CITY, SOUTH DAKOTA 57702 PHONE (605) 343-9606 SUMMIT FIRE CONSULTING 575 MINNEHAHA AVE WEST ST. PAUL, MINNESOTA 55103 (612) 387-7050	ARCHITECT FOURFRONT DESIGN INC. FOURFRONT DESIGN, INC. 517 7TH STREET RAPID CITY, SOUTH DAKOTA 57701 PH: (605) 342-9470 FAX: (605) 342-2377 WWW.FOURFRONTDESIGN.COM	Drawing Title ROOM FINISH SCHEDULE Approved: Project Director FARGO VAHCS	Project Title EXPAND BLDG. 1 FOR PRIMARY CARE Location 2101 ELM STREET FARGO, ND 58102 Date 11/16/21 Checked JS Drawn MD/JGC	Project Number 437-315 Building Number 1 Drawing Number A5.00 Dwg. 47 of 128	Office of Construction and Facilities Management Department of Veterans Affairs
------------------------	------------	------	--	---	--	--	--	---	--

GENERAL NOTES:

1. SHEET SIZE FOR PROPER SCALE IS 30X42.
2. SEE SHEET G003 FOR GENERAL NOTES.
3. APPLY 1 1/2" THICK FIREPROOFINGS AT ALL EXPOSED STRUCTURAL STEEL DECKING SECONDARY STRUCTURE WITHIN CEILING SPACE ABOVE BASEMENT & FIRST FLOOR LEVEL CEILING. TYP. EXCEPT STAIRS.

KEYNOTES:

- 09-31 PT-2, PORCELAIN TILE, SEE SPECIFICATION.
- 09-32 PT-3, GLASS TILE, SEE SPECIFICATION.
- 09-33 METAL BULLNOSE TRIM, SEE SPECIFICATION.
- 09-36 PT-4, PORCELAIN TILE, SEE SPECIFICATION.
- 09-65 RUBBER BASE, SEE SPECIFICATION.
- 09-67 PORCELAIN TILE BASE, SEE SPECIFICATION.
- 10-04 ROOM SIGN, SEE SIGNAGE SCHEDULE.
- 10-09 ROLL TYPE WINDOW SHADES.
- 10-21.1 CG-1, VINYL CORNER GUARD, SEE SPECIFICATION.
- 10-21.2 CG-2, STAINLESS STEEL CORNER GUARD, SEE SPECIFICATION.
- 10-22 24"x30" MIRROR, SEE SPECIFICATION.
- 10-30 SURFACE MOUNTED PAPER TOWEL DISPENSER, SEE SPECIFICATION.
- 10-35 ROBE HOOK, SEE SPECIFICATION.
- 10-37 SOAP DISPENSER (A5076), SEE SPECIFICATION.
- 10-50 FULL HEIGHT METAL LOCKERS, SEE SPECS.
- 11-01 WALL MOUNTED DISPLAY BY OWNER. TYPICAL. SEE ELECTRICAL FOR CONNECTION TYP.
- 12-30 PLASTIC LAMINATE COUNTERTOP AND BACKSPLASH, TYPICAL.
- 12-35 PLASTIC LAMINATE WALL CABINETS, TYP., SEE SPECIFICATION.
- 12-42 PLASTIC LAMINATE WALL CABINETS, TYP., SEE SPECIFICATION.
- 22-01 PLUMBING FIXTURE (REF. MECHANICAL).
- 22-03 SOLID SURFACE SHOWER PAN, TYP.
- 23-01 MECHANICAL EQUIPMENT (REF. MECHANICAL).
- 26-50 INTERIOR LIGHT FIXTURE (REF. ELECTRICAL).



CONSTRUCTION DOCUMENTS

CONSULTANTS:

Calibre
CALIBRE
9090 S RIDGELINE BLVD, SUITE 105
HIGHLANDS RANCH, COLORADO 80129
PHONE: (303) 730-0434

Albertson Engineering Inc.

ALBERTSON ENGINEERING INC.
3202 W MAIN ST C
RAPID CITY, SOUTH DAKOTA 57702
PHONE: (605) 343-9606

SUMMIT FIRE CONSULTING
575 MINNEHAHA AVE WEST
ST. PAUL, MINNESOTA 55103
(612) 387-7050



ARCHITECT

FOURFRONT DESIGN INC.
FOURFRONT DESIGN, INC.
517 7TH STREET
RAPID CITY, SOUTH DAKOTA
57701
PH: (605) 342-9470
FAX: (605) 342-2377
WWW.FOURFRONTDESIGN.COM

Drawing Title
ENLARGED FLOOR PLAN AND INTERIOR ELEVATIONS - BASEMENT

Approved: Project Director
FARGO VAHCS

Project Title
EXPAND BLDG. 1 FOR PRIMARY CARE

Location
**2101 ELM STREET
FARGO, ND 58102**

Date
11/16/21

Checked
JS

Drawn
MD/JGC

Project Number
437-315

Building Number
1

Drawing Number
A5.01

Dwg. 48 of 128

Office of
Construction
and Facilities
Management

