

1

PLUMBING - ENLARGED DEMOLITION PLAN, INTERSTITIAL FLOOR - AREA 1

3/16" = 1'-0"

0 4' 8' 12'


PLAN LEGEND	
	AREA NOT IN CONTRACT
PLUMBING DEMOLITION GENERAL NOTES	
A.	CONTRACTOR TO COORDINATE WITH VA COR FOR ALL PLUMBING SERVICE OUTAGES.
B.	CONTRACTOR SHALL BE RESPONSIBLE FOR ANY DAMAGE TO FINISHES OR COMPONENTS NOT SCHEDULED FOR DEMOLITION. DAMAGED ITEMS SHALL BE REPLACED OR REPAIRED TO MEET OR EXCEED FORMER CONDITIONS.
C.	EXISTING CONDITIONS ARE SHOWN BASED ON INFORMATION OBTAINED FROM FIELD SURVEYS, EXISTING BUILDING DOCUMENTS, AND STAFF. VERIFY EXISTING CONDITIONS AND REPORT ANY CONFLICTS BEFORE PROCEEDING.
D.	ABANDONED AND/OR DEAD LEG DOMESTIC WATER PIPING WILL NOT BE ALLOWED AND SHALL BE REMOVED EVEN IF NOT SHOWN ON DRAWINGS.
E.	ALL PENETRATIONS SHALL BE SEALED WITH FIRE PROOFING.
F.	REMOVE ALL ASSOCIATED VALVING, CLAMPS, HANGERS, SUPPORTS, ETC., ASSOCIATED WITH PIPING REMOVAL.
G.	CONTRACTOR IS RESPONSIBLE FOR ALL MODIFICATIONS TO THE EXISTING PIPING NECESSARY TO PERMIT THE INSTALLATION OF NEW WORK.
H.	ALL ASSOCIATED PIPING SHALL INCLUDE BUT NOT BE LIMITED TO CW, HW, HWC, SANITARY, AND VENT PIPING.
I.	ALL DOMESTIC PIPING BEING DEMOLISHED TO MAIN SHALL BE CAPPED 1.5X THE DIAMETER OF BRANCH PIPING. NO DEAD END OR STUBS ARE ALLOWED IN DOMESTIC WATER PIPING. ALL DEAD END PIPING MUST BE CAPPED.
J.	ANY PIPING THAT CANNOT BE VALVED OFF MUST BE "FROZE". CONTRACTOR TO PROVIDE "FREEZE SHUT DOWN".
K.	PATCH AND FILL CONCRETE SLAB WHERE DOMESTIC WATER AND VENT PIPING HAVE BEEN REMOVED.
L.	ASSUME ALL MASTIC ON PIPE INSULATION CONTAINS ASBESTOS AND MUST BE ABATED BY A LICENSED ABATEMENT SUBCONTRACTOR.
M.	PRIOR TO START OF DEMOLITION WORK, GC SHALL ENSURE THAT A CURRENT VA PROVIDED HAZARDOUS MATERIAL SURVEY HAS BEEN CONDUCTED IDENTIFYING ALL HAZARDOUS MATERIAL FOUND IN SOW AREAS. GC TO VERIFY QUANTITIES AND LOCATIONS OF ALL HAZARDOUS MATERIALS FOUND TO BE REMOVED PRIOR TO DEMOLITION. REMOVAL TO BE IN ACCORDANCE WITH ANY REGULATORY PLANS OR APPROVALS IN STATE OF WEST VIRGINIA. APPROXIMATE QUANTITY TO BE REMOVED: ~ 2,000 FEET OF LINEAR PIPING.
PLUMBING DEMOLITION KEYNOTES	
X	
1.	ABANDON IN PLACE.
2.	REMOVE PIPING AS SHOWN DASHED BEYOND THIS POINT. CAP AND SEAL PIPING AT MAIN.



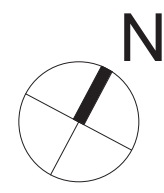
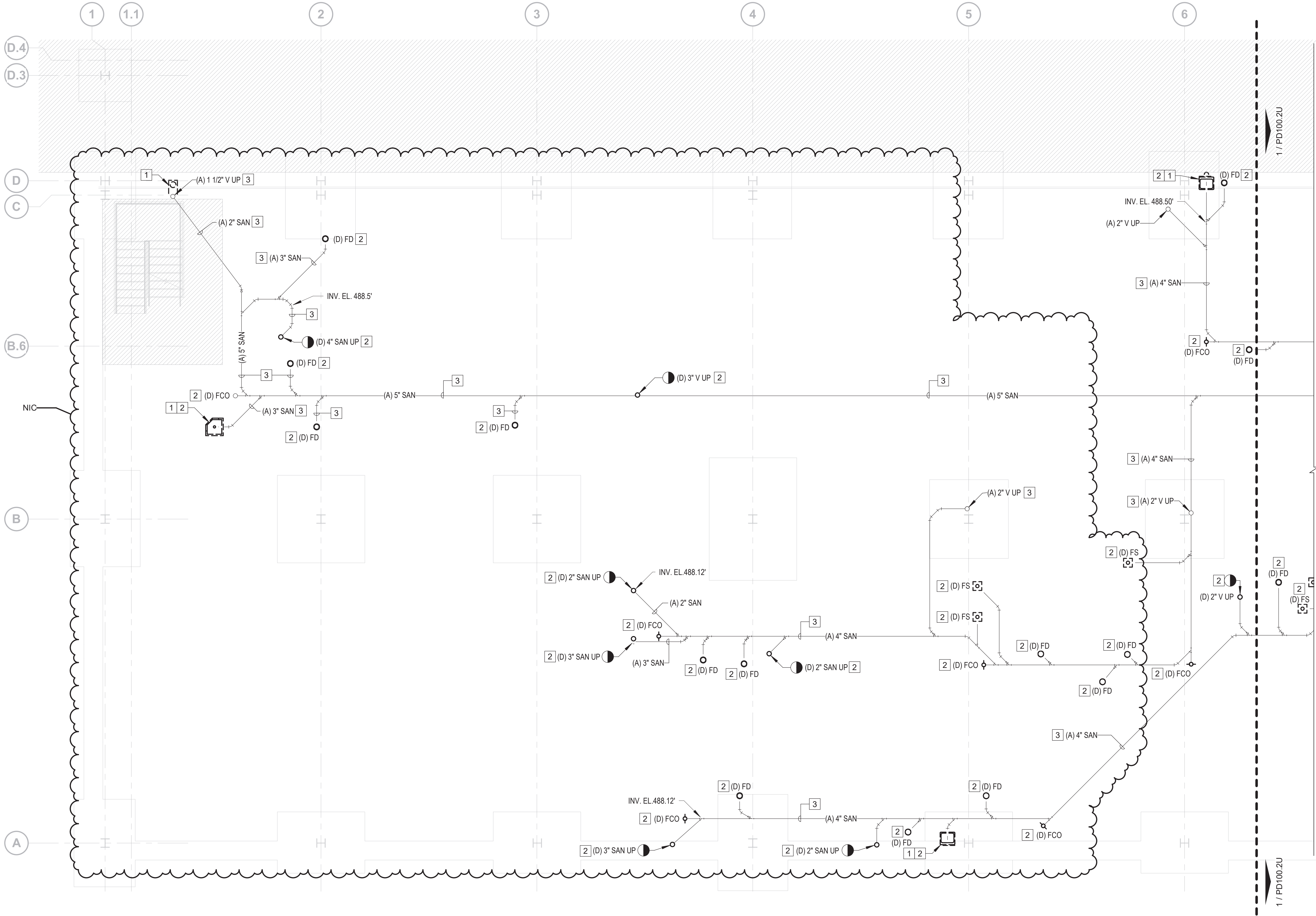
BASEMENT KEY PLAN - AREA 1

NOT TO SCALE

VA CONTRACT NO: 36C24519C0171

		CONSULTANT	<div><div>700 Nicholas Blvd, Suite 300 Elk Grove Village, IL 60007 T:847.952.9342 F:847.952.9403 www.bancroft-ae.com</div></div>	STAMP	<div>Office of Construction and Facilities Management</div> <div>VAU.S. Department of Veterans Affairs</div>	Drawing Title PLUMBING - ENLARGED DEMOLITION PLAN, INTERSTITIAL FLOOR - AREA 1	Phase	BID DOCUMENTS SUBMITTAL		Project Title RENOVATE /UPGRADE NUTRITION & FOOD SERVICE KITCHEN	Project Number 613-19-103						
								Building Number 500									
BID DOCUMENTS SUBMITTAL								Location 510 BUTLER AVENUE, MARTINSBURG, WV 25405		Drawing Number PD100.11							
100% CONSTRUCTION DOCUMENTS SUBMISSION								Issue Date 11/24/21	Checked RAH	Drawn TE							
95% CONSTRUCTION DOCUMENTS SUBMISSION																	
Revisions:																	

C:\Users\mcalister\Documents\15-133_Plumbing_Central_mcalisterBDRM.rvt 11/24/2021 12:13:35 PM



1

PLUMBING - ENLARGED DEMOLITION PLAN, UNDERGROUND - AREA 1

3/16" = 1'-0"



PLAN LEGEND	
	AREA NOT IN CONTRACT
PLUMBING DEMOLITION GENERAL NOTES	
A.	CONTRACTOR TO COORDINATE WITH VA COR FOR ALL PLUMBING SERVICE OUTAGES.
B.	CONTRACTOR SHALL BE RESPONSIBLE FOR ANY DAMAGE TO FINISHES OR COMPONENTS NOT SCHEDULED FOR DEMOLITION. DAMAGED ITEMS SHALL BE REPLACED OR REPAIRED TO MEET OR EXCEED FORMER CONDITIONS.
C.	EXISTING CONDITIONS ARE SHOWN BASED ON INFORMATION OBTAINED FROM FIELD SURVEYS, EXISTING BUILDING DOCUMENTS, AND STAFF. VERIFY EXISTING CONDITIONS AND REPORT ANY CONFLICTS BEFORE PROCEEDING.
D.	REMOVE ALL ASSOCIATED VALVING, CLAMPS, HANGERS, SUPPORTS, ETC., ASSOCIATED WITH PIPING REMOVAL.
E.	CONTRACTOR IS RESPONSIBLE FOR ALL MODIFICATIONS TO THE EXISTING PIPING NECESSARY TO PERMIT THE INSTALLATION OF NEW WORK.
F.	REMOVE EXISTING CONCRETE FLOOR SLAB TO ACCOMMODATE UNDERGROUND PLUMBING WORK. ASSUME 12 INCH SLAB THROUGH OUT THE KITCHEN, VERIFY ACTUAL THICKNESS.
G.	PATCH AND FILL CONCRETE SLAB WHERE SANITARY AND VENT PIPING HAVE BEEN REMOVED OR PLUGGED.
H.	COORDINATE CONCRETE FLOOR SLAB REMOVAL AND REPLACEMENT WORK WITH ARCHITECTURAL AND STRUCTURAL REQUIREMENTS. NEW CONCRETE FLOOR SLAB WORK SHALL BE PERFORMED AS EARLY AS POSSIBLE IN THE PROJECT SCHEDULE TO ALLOW FOR THE PROPER CURING TIME REQUIRED TO RECIEVE THE NEW FLOOR FINISHES.
I.	FINISHED FLOOR EL. 490'
PLUMBING DEMOLITION KEYNOTES	
1.	REMOVE PLUMBING FIXTURE IN ITS ENTIRETY.
2.	INSTALL MECHANICAL PLUG (SIMILAR TO CHERNE "END-OF-PIPE GRIPPER") TO PERMANENTLY BLOCK SANITARY PIPING. SANITARY PIPING TO BE ABANDONED IN PLACE. CUT SANITARY PIPING AS NEEDED TO INSTALL PLUG RECESSED WITHIN EXISTING FLOOR TO PREVENT TRIP HAZARD. REFER TO ARCHITECTURAL DRAWINGS FOR MORE INFORMATION.
3.	ABANDON IN PLACE.



BASEMENT KEY PLAN - AREA 1

NOT TO SCALE

VA CONTRACT NO: 36C24519C0171

BID DOCUMENTS SUBMITTAL	11/24/2021
100% CONSTRUCTION DOCUMENTS SUBMISSION	07/23/2021
95% CONSTRUCTION DOCUMENTS SUBMISSION	02/12/2021
60% DESIGN DEVELOPMENT SUBMISSION	09/11/2020
30% SCHEMATIC DESIGN DEVELOPMENT	05/24/2020
Revisions:	Date:

CONSULTANT

ARCHITECT/ENGINEER OF RECORD
 BANCROFT ARCHITECTS + ENGINEERS 700 Nicholas Blvd, Suite 300 Elk Grove Village, IL 60007 T: 847.952.9362 F: 847.952.9403 www.bancroft-ae.com

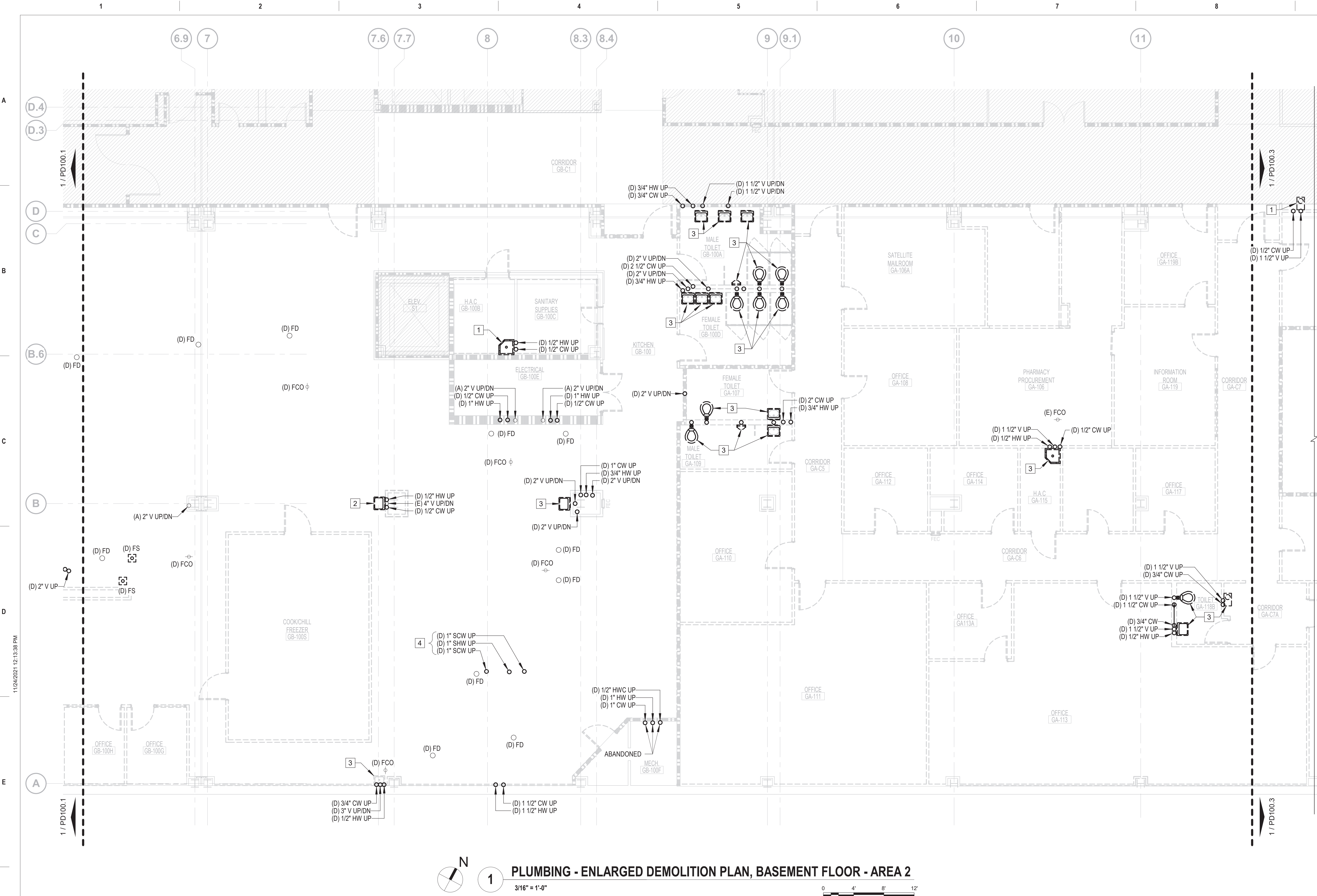
STAMP

Office of Construction and Facilities Management VA U.S. Department of Veterans Affairs
--

Drawing Title PLUMBING - ENLARGED DEMOLITION PLAN, UNDERGROUND - AREA 1
Approved: Project Director

Phase BID DOCUMENTS SUBMITTAL
FULLY SPRINKLERED

Project Title RENOVATE /UPGRADE NUTRITION & FOOD SERVICE KITCHEN			Project Number 613-19-103 Building Number 500	
Location 510 BUTLER AVENUE, MARTINSBURG, WV 25405			Drawing Number	
Issue Date 11/24/21	Checked RAH	Drawn TE	PD100.1U	



1 PLUMBING - ENLARGED DEMOLITION PLAN, BASEMENT FLOOR - AREA 2
3/16" = 1'-0"

PLAN LEGEND

AREA NOT IN CONTRACT

2 HOUR FIRE & SMOKE SEPARATION

1 HOUR FIRE & SMOKE SEPARATION

PLUMBING DEMOLITION GENERAL NOTES

A. CONTRACTOR TO COORDINATE WITH VA COR FOR ALL PLUMBING SERVICE OUTAGES.

B. CONTRACTOR SHALL BE RESPONSIBLE FOR ANY DAMAGE TO FINISHES OR COMPONENTS NOT SCHEDULED FOR DEMOLITION. DAMAGED ITEMS SHALL BE REPLACED OR REPAIRED TO MEET OR EXCEED FORMER CONDITIONS.

C. GENERAL CONTRACTOR IS RESPONSIBLE FOR REMOVAL AND REPLACEMENT OF CEILINGS, CEILING TILES, AND CEILING GRIDS ASSOCIATED WITH AREAS OF WORK BY ALL CONTRACTORS.

D. EXISTING CONDITIONS ARE SHOWN BASED ON INFORMATION OBTAINED FROM FIELD SURVEYS, EXISTING BUILDING DOCUMENTS, AND STAFF. VERIFY EXISTING CONDITIONS AND REPORT ANY CONFLICTS BEFORE PROCEEDING.

E. ABANDONED AND/OR DEAD LEG DOMESTIC WATER PIPING WILL NOT BE ALLOWED AND SHALL BE REMOVED EVEN IF NOT SHOWN ON DRAWINGS.

F. ALL PENETRATIONS SHALL BE SEALED WITH FIRE PROOFING.

G. REMOVE ALL ASSOCIATED VALVING, CLAMPS, HANGERS, SUPPORTS, ETC., ASSOCIATED WITH PIPING REMOVAL.

H. CONTRACTOR IS RESPONSIBLE FOR ALL MODIFICATIONS TO THE EXISTING PIPING NECESSARY TO PERMIT THE INSTALLATION OF NEW WORK.

I. ALL ASSOCIATED PIPING SHALL INCLUDE BUT NOT BE LIMITED TO CW, HW, HWC, SANITARY, AND VENT PIPING.

J. REMOVE EXISTING CONCRETE FLOOR SLAB TO ACCOMMODATE UNDERGROUND PLUMBING WORK. ASSUME 12 INCH SLAB THROUGH OUT THE KITCHEN, VERIFY ACTUAL THICKNESS.

K. PATCH AND FILL CONCRETE SLAB WHERE DOMESTIC WATER, SANITARY AND VENT PIPING HAVE BEEN REMOVED OR PLUGGED.

L. COORDINATE CONCRETE FLOOR SLAB REMOVAL AND REPLACEMENT WORK WITH ARCHITECTURAL AND STRUCTURAL REQUIREMENTS. NEW CONCRETE FLOOR SLAB WORK SHALL BE PERFORMED AS EARLY AS POSSIBLE IN THE PROJECT SCHEDULE TO ALLOW FOR THE PROPER CURING TIME REQUIRED TO RECIEVE THE NEW FLOOR FINISHES.

M. ASSUME ALL MASTIC ON PIPE INSULATION CONTAINS ASBESTOS AND MUST BE ABATED BY A LICENSED ABATEMENT SUBCONTRACTOR.

N. PRIOR TO START OF DEMOLITION WORK, GC SHALL ENSURE THAT A CURRENT VA PROVIDED HAZARDOUS MATERIAL SURVEY HAS BEEN CONDUCTED IDENTIFYING ALL HAZARDOUS MATERIAL FOUND IN SOW AREAS. GC TO VERIFY QUANTITIES AND LOCATIONS OF ALL HAZARDOUS MATERIALS FOUND TO BE REMOVED PRIOR TO DEMOLITION. REMOVAL TO BE IN ACCORDANCE WITH ANY REGULATORY PLANS OR APPROVALS IN STATE OF WEST VIRGINIA. APPROXIMATE QUANTITY TO BE REMOVED: ~ 2,000 FEET OF LINEAR PIPING.

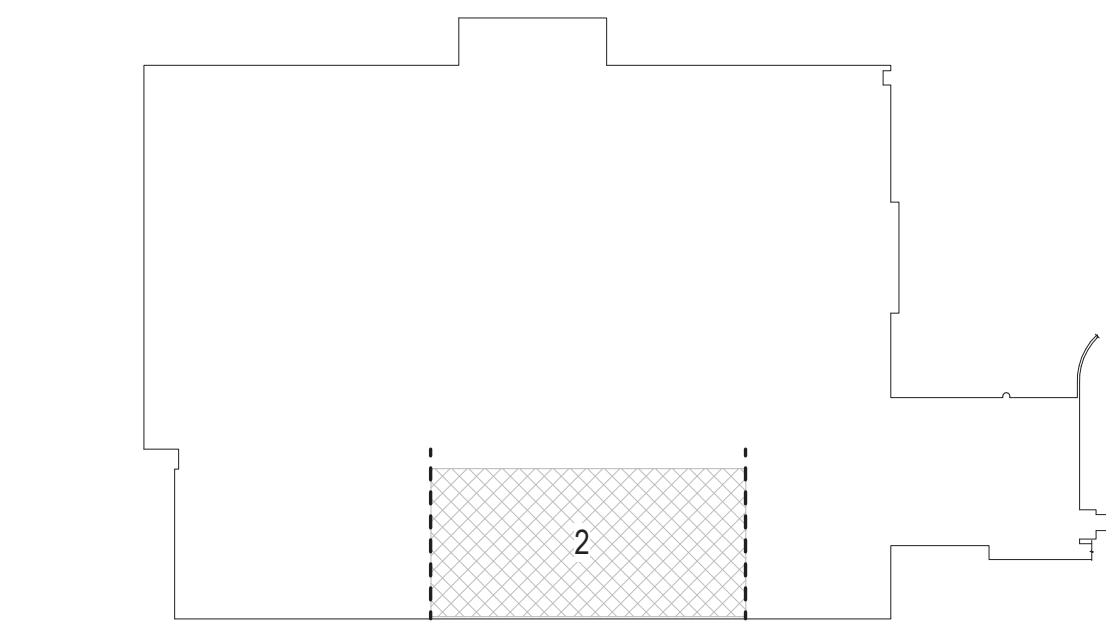
PLUMBING DEMOLITION KEYNOTES

1. REMOVE PLUMBING FIXTURE IN ITS ENTIRETY AND ALL ASSOCIATED PIPING BACK TO MAIN. DEMOLISH SANITARY PIPING TO THE FLOOR.

2. REMOVE PLUMBING FIXTURE IN ITS ENTIRETY AND ALL ASSOCIATED DOMESTIC WATER PIPING BACK TO MAIN. SANITARY AND VENT PIPING TO BE ABANDONED IN PLACE.

3. REMOVE PLUMBING FIXTURE IN ITS ENTIRETY AND ALL ASSOCIATED PIPING BACK TO MAIN.

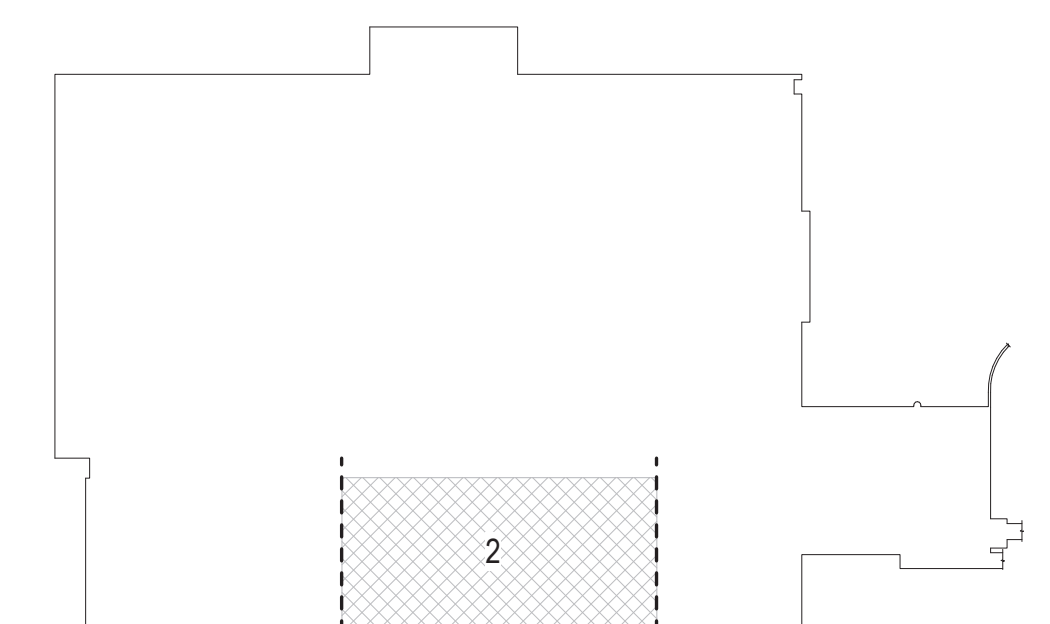
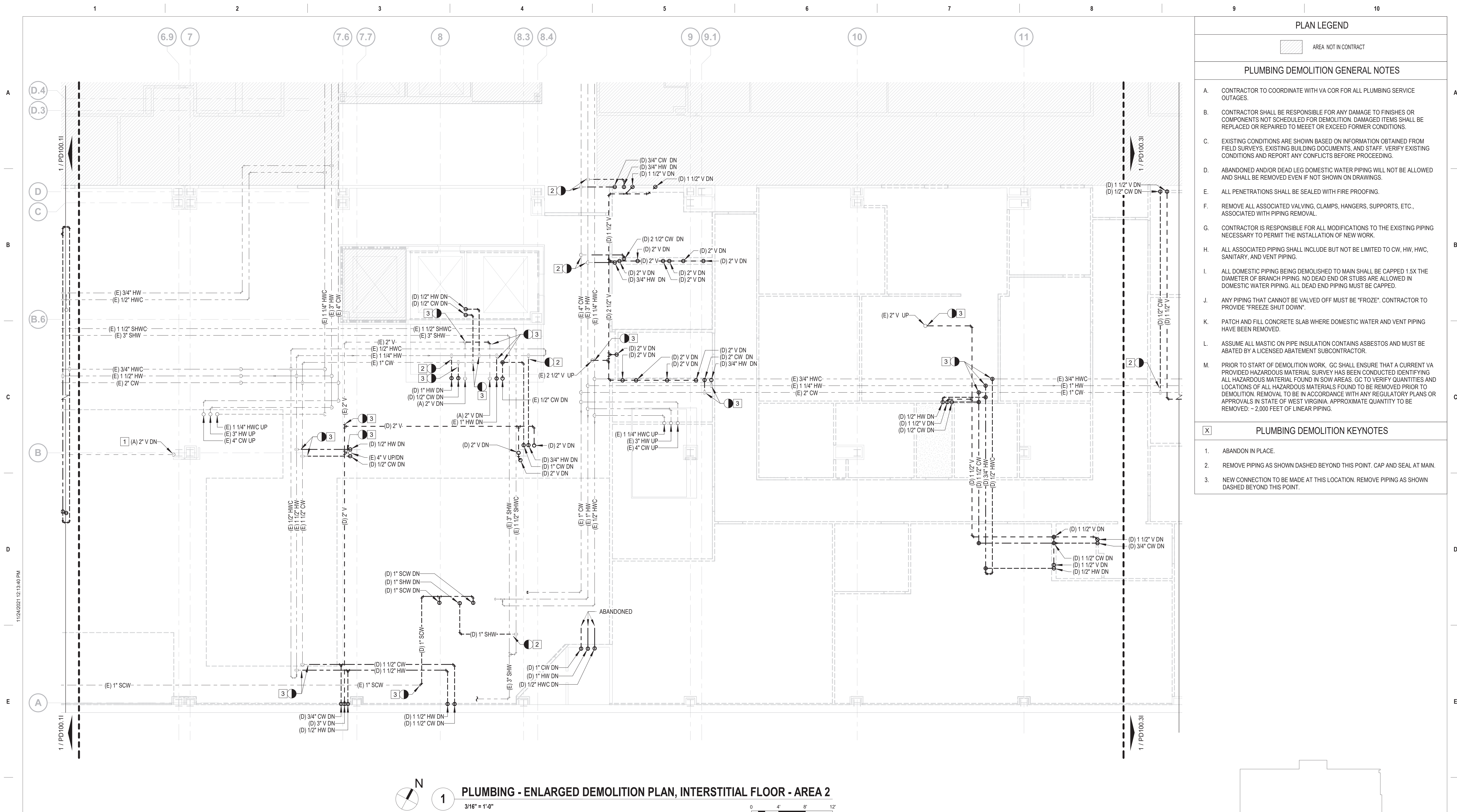
4. DEMOLISH DOMESTIC SOFT WATER PIPING TO DISHWASHING UNIT.



BASEMENT KEY PLAN - AREA 2
NOT TO SCALE

VA CONTRACT NO: 36C24519C0171

		CONSULTANT		ARCHITECT/ENGINEER OF RECORD		STAMP		Office of Construction and Facilities Management		Drawing Title PLUMBING - ENLARGED DEMOLITION PLAN, BASEMENT FLOOR - AREA 2		Phase		Project Number 613-19-103	
				<div><div><div><div></div><div>Bancroft</div></div><div><div>700 Nicholas Blvd, Suite 300 Elk Grove Village, IL 60007 T: 847-952-3942 F: 847-952-9403 www.bancroft-ae.com</div></div></div><div>BANCROFT ARCHITECTS + ENGINEERS</div></div> <td colspan="2"></td> <td colspan="2"></td> <td colspan="2">Approved: Project Director</td> <td colspan="2">Project Title RENOVATE /UPGRADE NUTRITION & FOOD SERVICE KITCHEN</td> <td colspan="2">Building Number 500</td>						Approved: Project Director		Project Title RENOVATE /UPGRADE NUTRITION & FOOD SERVICE KITCHEN		Building Number 500	
BID DOCUMENTS SUBMITTAL		11/24/2021								Location 510 BUTLER AVENUE, MARTINSBURG, WV 25405		Drawing Number PD100.2			
100% CONSTRUCTION DOCUMENTS SUBMISSION		07/23/2021								Issue Date 11/24/21		Checked RAH			
95% CONSTRUCTION DOCUMENTS SUBMISSION		02/12/2021								Drawn TE					
60% DESIGN DEVELOPMENT SUBMISSION		09/11/2020													
30% SCHEMATIC DESIGN DEVELOPMENT		05/24/2020													
Revisions:		Date:													



BASEMENT KEY PLAN - AREA 2

NOT TO
SCALE

VA CONTRACT NO: 36C24519C0171

Project Title RENOVATE /UPGRADE NUTRITION & FOOD SERVICE KITCHEN			Project Number 613-19-103	
Location 510 BUTLER AVENUE, MARTINSBURG, WV 25405			Building Number 500	
Issue Date 11/24/21		Checked RAH	Drawn TWE	
PD100.21				

BID DOCUMENTS SUBMITTAL	11/24/2021
100% CONSTRUCTION DOCUMENTS SUBMISSION	07/23/2021
95% CONSTRUCTION DOCUMENTS SUBMISSION	02/12/2021
Revisions:	Date:

CONSULTANT

ARCHITECT/ENGINEER OF RECORD



STAMP

Office of
Construction
and Facilities
Management

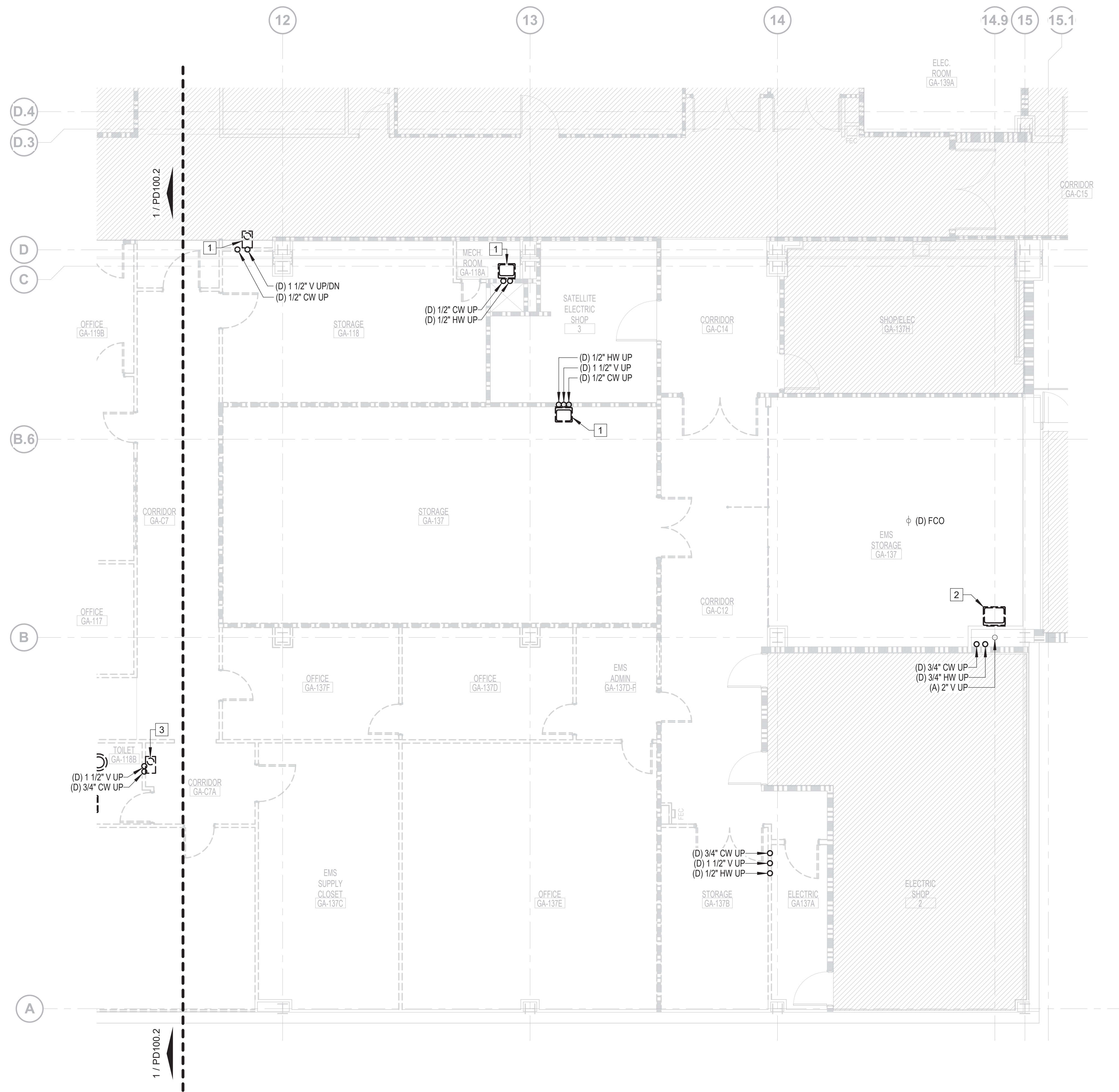
VA | U.S. Department
of Veterans Affairs




Drawing Title	PLUMBING - ENLARGED DEMOLITION PLAN, INTERSTITIAL FLOOR - AREA 2
---------------	---

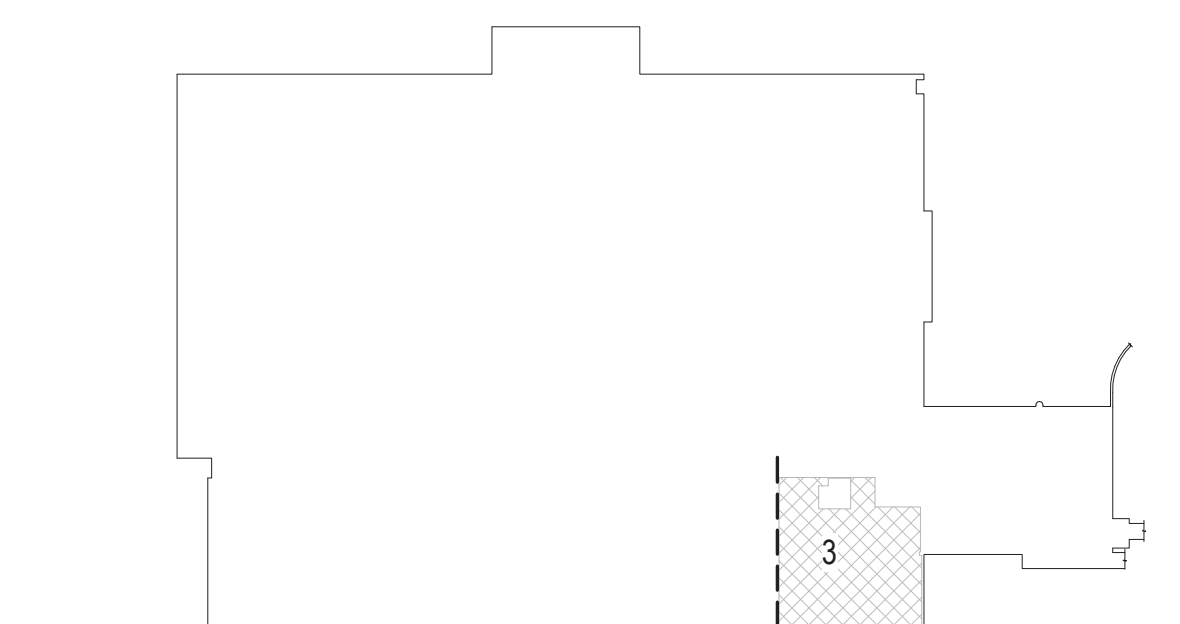
Approved: Project Director

Phase	BID DOCUMENTS SUBMITTAL
-------	----------------------------

FULLY SPRINKLERED



<div> <div>  <div>AREA NOT IN CONTRACT</div> </div> <div>  <div>2 HOUR FIRE & SMOKE SEPARATION</div> </div> <div>  <div>1 HOUR FIRE & SMOKE SEPARATION</div> </div> </div>	
<div>PLUMBING DEMOLITION GENERAL NOTES</div>	
<div> <div>A.</div> <div>CONTRACTOR TO COORDINATE WITH VA COR FOR ALL PLUMBING SERVICE OUTAGES.</div> </div> <div> <div>B.</div> <div>CONTRACTOR SHALL BE RESPONSIBLE FOR ANY DAMAGE TO FINISHES OR COMPONENTS NOT SCHEDULED FOR DEMOLITION. DAMAGED ITEMS SHALL BE REPAIRED OR REPAIRED TO MEET OR EXCEED FORMER CONDITIONS.</div> </div> <div> <div>C.</div> <div>GENERAL CONTRACTOR IS RESPONSIBLE FOR REMOVAL AND REPLACEMENT OF CEILINGS, CEILING TILES, AND CEILING GRIDS ASSOCIATED WITH AREAS OF WORK BY ALL CONTRACTORS.</div> </div> <div> <div>D.</div> <div>EXISTING CONDITIONS ARE SHOWN BASED ON INFORMATION OBTAINED FROM FIELD SURVEYS, EXISTING BUILDING DOCUMENTS, AND STAFF. VERIFY EXISTING CONDITIONS AND REPORT ANY CONFLICTS BEFORE PROCEEDING.</div> </div> <div> <div>E.</div> <div>ABANDONED AND/OR DEAD LEG DOMESTIC WATER PIPING WILL NOT BE ALLOWED AND SHALL BE REMOVED EVEN IF NOT SHOWN ON DRAWINGS.</div> </div> <div> <div>F.</div> <div>ALL PENETRATIONS SHALL BE SEALED WITH FIRE PROOFING.</div> </div> <div> <div>G.</div> <div>REMOVE ALL ASSOCIATED VALVING, CLAMPS, HANGERS, SUPPORTS, ETC., ASSOCIATED WITH PIPING REMOVAL.</div> </div> <div> <div>H.</div> <div>CONTRACTOR IS RESPONSIBLE FOR ALL MODIFICATIONS TO THE EXISTING PIPING NECESSARY TO PERMIT THE INSTALLATION OF NEW WORK.</div> </div> <div> <div>I.</div> <div>ALL ASSOCIATED PIPING SHALL INCLUDE BUT NOT BE LIMITED TO CW, HW, HWC, SANITARY, AND VENT PIPING.</div> </div> <div> <div>J.</div> <div>REMOVE EXISTING CONCRETE FLOOR SLAB TO ACCOMMODATE UNDERGROUND PLUMBING WORK. ASSUME 12 INCH SLAB THROUGH OUT THE KITCHEN, VERIFY ACTUAL THICKNESS.</div> </div> <div> <div>K.</div> <div>PATCH AND FILL CONCRETE SLAB WHERE DOMESTIC WATER, SANITARY AND VENT PIPING HAVE BEEN REMOVED OR PLUGGED.</div> </div> <div> <div>L.</div> <div>COORDINATE CONCRETE FLOOR SLAB REMOVAL AND REPLACEMENT WORK WITH ARCHITECTURAL AND STRUCTURAL REQUIREMENTS. NEW CONCRETE FLOOR SLAB WORK SHALL BE PERFORMED AS EARLY AS POSSIBLE IN THE PROJECT SCHEDULE TO ALLOW FOR THE PROPER CURING TIME REQUIRED TO RECEIVE THE NEW FLOOR FINISHES.</div> </div> <div> <div>M.</div> <div>ASSUME ALL MASTIC ON PIPE INSULATION CONTAINS ASBESTOS AND MUST BE ABATED BY A LICENSED ABATEMENT SUBCONTRACTOR.</div> </div> <div> <div>N.</div> <div>PRIOR TO START OF DEMOLITION WORK, GC SHALL ENSURE THAT A CURRENT VA PROVIDED HAZARDOUS MATERIAL SURVEY HAS BEEN CONDUCTED IDENTIFYING ALL HAZARDOUS MATERIAL FOUND IN SOW AREAS. GC TO VERIFY QUANTITIES AND LOCATIONS OF ALL HAZARDOUS MATERIALS FOUND TO BE REMOVED PRIOR TO DEMOLITION. REMOVAL TO BE IN ACCORDANCE WITH ANY REGULATORY PLANS OR APPROVALS IN STATE OF WEST VIRGINIA. APPROXIMATE QUANTITY TO BE REMOVED: ~ 2,000 FEET OF LINEAR PIPING.</div> </div>	
<div>X</div>	<div>PLUMBING DEMOLITION KEYNOTES</div>
<div> <div>1.</div> <div>REMOVE PLUMBING FIXTURE IN ITS ENTIRETY AND ALL ASSOCIATED PIPING BACK TO MAIN. DEMOLISH SANITARY PIPING TO THE FLOOR.</div> </div> <div> <div>2.</div> <div>REMOVE PLUMBING FIXTURE IN ITS ENTIRETY AND ALL ASSOCIATED DOMESTIC WATER PIPING BACK TO MAIN. SANITARY AND VENT PIPING TO BE ABANDONED IN PLACE.</div> </div> <div> <div>3.</div> <div>REMOVE PLUMBING FIXTURE IN ITS ENTIRETY AND ALL ASSOCIATED PIPING BACK TO MAIN.</div> </div>	



BASEMENT KEY PLAN - AREA 3

NOT TO
SCALE

VA CONTRACT NO: 36C24519C0171

[illegible]

