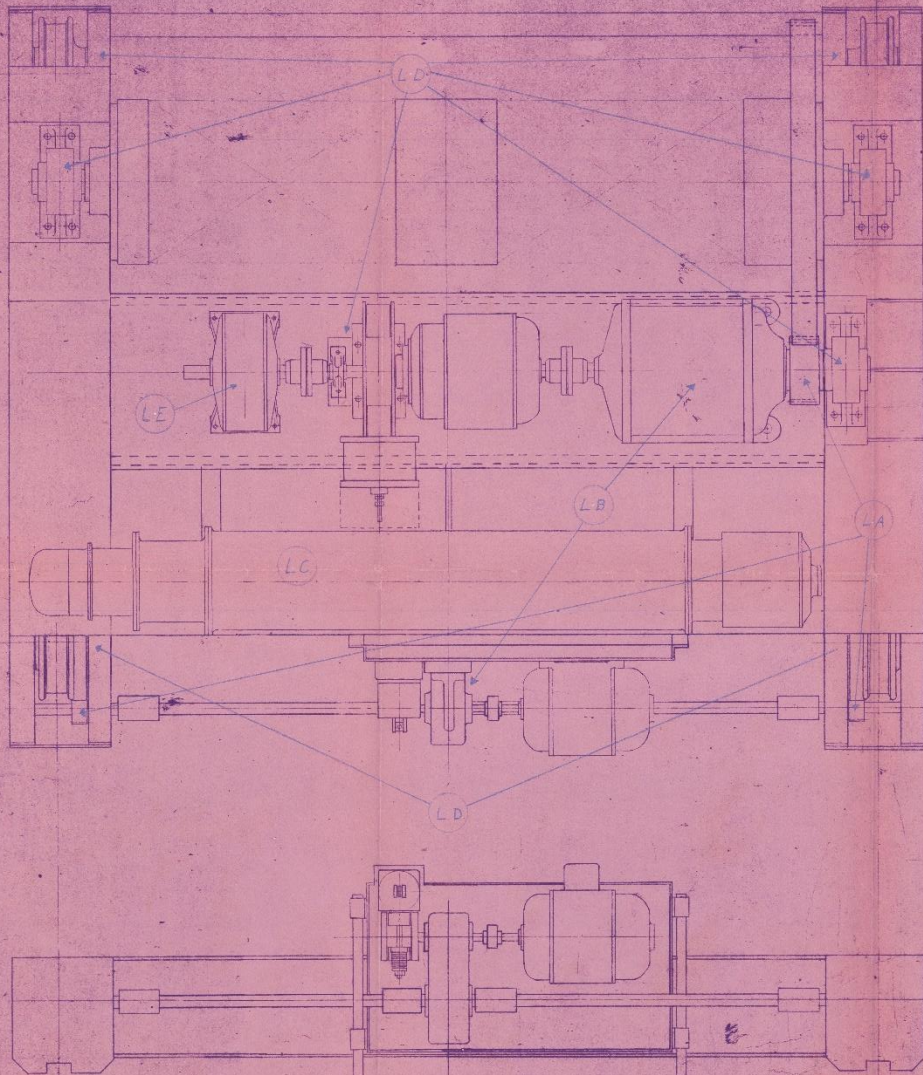




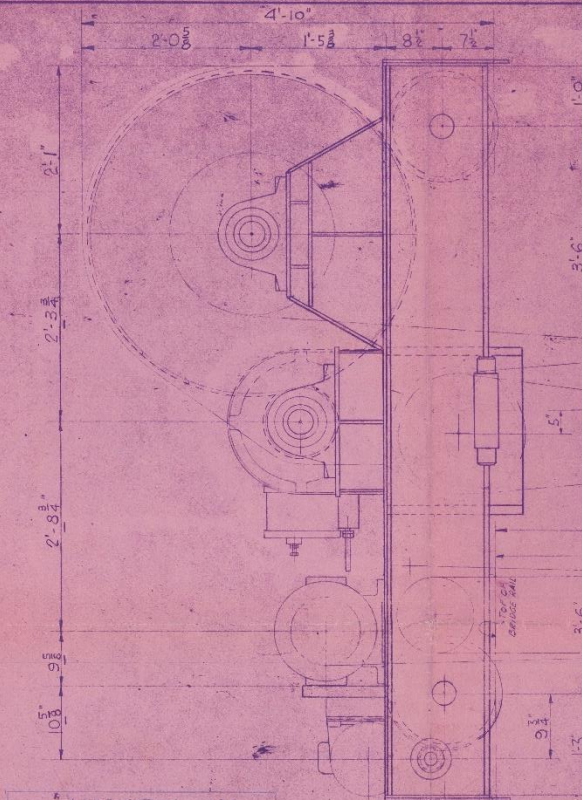


47-1162

7'-0" WHEEL RISE



9'-0" SPREAD



**LUBRICATION CODE**  
 (A) SOTON HOIST BULL GEAR & DR. WHEEL BEARS - KEYSTONE NO. 1 T.M.E.D.  
 (B) GEAR CASES - AS PER NAME PLATE DATA  
 (C) BEARING HOIST CASES - AS PER NAME PLATE DATA  
 (D) FITTINGS - HUMBLE MULTI-PURPOSE OIL  
 (E) EDDY CURRENT BRAKE 1000 PSI  
 (F) DYNAMIC MANUAL PAGE 25-1000

NOTE:  
 \* BY CHECO - LOS ANGELES  
 BALANCE BY CHECO - HOUSTON

FOR GENERAL NOTES REFER GENERAL ARRG'T ENG #L 1152

**BILL OF MATERIAL**

ITEM	QTY	DESCRIPTION	PL	PL
1	1	WINSMITH HORSE DIFFERENTIAL SPEED REDUCER 2" B.T.H. 30:1 RATIO		
2	1	REDUCER 2" B.T.H. 30:1 RATIO		
3	1	HAIR STEEL ROLLER 2" DIA. 1/2" THICK		
4	1	HAIR STEEL ROLLER 2" DIA. 1/2" THICK		
5	1	HAIR STEEL ROLLER 2" DIA. 1/2" THICK		
6	1	HAIR STEEL ROLLER 2" DIA. 1/2" THICK		
7	1	HAIR STEEL ROLLER 2" DIA. 1/2" THICK		
8	1	HAIR STEEL ROLLER 2" DIA. 1/2" THICK		
9	1	HAIR STEEL ROLLER 2" DIA. 1/2" THICK		
10	1	HAIR STEEL ROLLER 2" DIA. 1/2" THICK		
11	1	HAIR STEEL ROLLER 2" DIA. 1/2" THICK		
12	1	HAIR STEEL ROLLER 2" DIA. 1/2" THICK		
13	1	HAIR STEEL ROLLER 2" DIA. 1/2" THICK		
14	1	HAIR STEEL ROLLER 2" DIA. 1/2" THICK		
15	1	HAIR STEEL ROLLER 2" DIA. 1/2" THICK		
16	1	HAIR STEEL ROLLER 2" DIA. 1/2" THICK		

17	1	SHEPARD-NILES 10-TON FORM-B SLAB 10-TON 1000MM DIA. HOIST REVER 4" DIA. 1/2" THICK		
18	1	UPPER SHEAVE 11/16" DIA. B. 201-4117		
19	1	EQUALIZER SHEAVE 5" DIA. B. 304-1017		
20	1	GE. DC SHEPARD HOIST WOUND DRUM TYPE BRAKE 11000 PSI 1500 (2000) LB		
21	1	HOIST BLOCK 10-TON 5 SHEAVE 2D-1082		
22	1	TROLLEY MOTOR 7.5 HP 1500 RPM		
23	1	SLIP RING HORSE 65 TENV 30:1 RATIO		
24	1	DRUM REDUCER 2" B.T.H. 30:1 RATIO		
25	1	HAIR STEEL ROLLER 2" DIA. 1/2" THICK		
26	1	HAIR STEEL ROLLER 2" DIA. 1/2" THICK		
27	1	HAIR STEEL ROLLER 2" DIA. 1/2" THICK		

SPEC. ENG. 88-019-60-21  
 REVISION NO. 1  
 DATE ISSUED 9-23-60

ASSEMBLY OF SOTON TROLLEY WITH HOIST AUXILIARY HOIST

ITEM	QTY	DESCRIPTION	PL	PL
1	1	WINSMITH HORSE DIFFERENTIAL SPEED REDUCER 2" B.T.H. 30:1 RATIO		
2	1	REDUCER 2" B.T.H. 30:1 RATIO		
3	1	HAIR STEEL ROLLER 2" DIA. 1/2" THICK		
4	1	HAIR STEEL ROLLER 2" DIA. 1/2" THICK		
5	1	HAIR STEEL ROLLER 2" DIA. 1/2" THICK		
6	1	HAIR STEEL ROLLER 2" DIA. 1/2" THICK		
7	1	HAIR STEEL ROLLER 2" DIA. 1/2" THICK		
8	1	HAIR STEEL ROLLER 2" DIA. 1/2" THICK		
9	1	HAIR STEEL ROLLER 2" DIA. 1/2" THICK		
10	1	HAIR STEEL ROLLER 2" DIA. 1/2" THICK		
11	1	HAIR STEEL ROLLER 2" DIA. 1/2" THICK		
12	1	HAIR STEEL ROLLER 2" DIA. 1/2" THICK		
13	1	HAIR STEEL ROLLER 2" DIA. 1/2" THICK		
14	1	HAIR STEEL ROLLER 2" DIA. 1/2" THICK		
15	1	HAIR STEEL ROLLER 2" DIA. 1/2" THICK		
16	1	HAIR STEEL ROLLER 2" DIA. 1/2" THICK		
17	1	HAIR STEEL ROLLER 2" DIA. 1/2" THICK		
18	1	HAIR STEEL ROLLER 2" DIA. 1/2" THICK		
19	1	HAIR STEEL ROLLER 2" DIA. 1/2" THICK		
20	1	HAIR STEEL ROLLER 2" DIA. 1/2" THICK		
21	1	HAIR STEEL ROLLER 2" DIA. 1/2" THICK		
22	1	HAIR STEEL ROLLER 2" DIA. 1/2" THICK		
23	1	HAIR STEEL ROLLER 2" DIA. 1/2" THICK		
24	1	HAIR STEEL ROLLER 2" DIA. 1/2" THICK		
25	1	HAIR STEEL ROLLER 2" DIA. 1/2" THICK		
26	1	HAIR STEEL ROLLER 2" DIA. 1/2" THICK		
27	1	HAIR STEEL ROLLER 2" DIA. 1/2" THICK		
28	1	HAIR STEEL ROLLER 2" DIA. 1/2" THICK		
29	1	HAIR STEEL ROLLER 2" DIA. 1/2" THICK		
30	1	HAIR STEEL ROLLER 2" DIA. 1/2" THICK		
31	1	HAIR STEEL ROLLER 2" DIA. 1/2" THICK		
32	1	HAIR STEEL ROLLER 2" DIA. 1/2" THICK		
33	1	HAIR STEEL ROLLER 2" DIA. 1/2" THICK		
34	1	HAIR STEEL ROLLER 2" DIA. 1/2" THICK		
35	1	HAIR STEEL ROLLER 2" DIA. 1/2" THICK		
36	1	HAIR STEEL ROLLER 2" DIA. 1/2" THICK		
37	1	HAIR STEEL ROLLER 2" DIA. 1/2" THICK		
38	1	HAIR STEEL ROLLER 2" DIA. 1/2" THICK		
39	1	HAIR STEEL ROLLER 2" DIA. 1/2" THICK		
40	1	HAIR STEEL ROLLER 2" DIA. 1/2" THICK		
41	1	HAIR STEEL ROLLER 2" DIA. 1/2" THICK		
42	1	HAIR STEEL ROLLER 2" DIA. 1/2" THICK		
43	1	HAIR STEEL ROLLER 2" DIA. 1/2" THICK		
44	1	HAIR STEEL ROLLER 2" DIA. 1/2" THICK		
45	1	HAIR STEEL ROLLER 2" DIA. 1/2" THICK		
46	1	HAIR STEEL ROLLER 2" DIA. 1/2" THICK		
47	1	HAIR STEEL ROLLER 2" DIA. 1/2" THICK		
48	1	HAIR STEEL ROLLER 2" DIA. 1/2" THICK		
49	1	HAIR STEEL ROLLER 2" DIA. 1/2" THICK		
50	1	HAIR STEEL ROLLER 2" DIA. 1/2" THICK		
51	1	HAIR STEEL ROLLER 2" DIA. 1/2" THICK		
52	1	HAIR STEEL ROLLER 2" DIA. 1/2" THICK		
53	1	HAIR STEEL ROLLER 2" DIA. 1/2" THICK		
54	1	HAIR STEEL ROLLER 2" DIA. 1/2" THICK		
55	1	HAIR STEEL ROLLER 2" DIA. 1/2" THICK		
56	1	HAIR STEEL ROLLER 2" DIA. 1/2" THICK		
57	1	HAIR STEEL ROLLER 2" DIA. 1/2" THICK		
58	1	HAIR STEEL ROLLER 2" DIA. 1/2" THICK		
59	1	HAIR STEEL ROLLER 2" DIA. 1/2" THICK		
60	1	HAIR STEEL ROLLER 2" DIA. 1/2" THICK		
61	1	HAIR STEEL ROLLER 2" DIA. 1/2" THICK		
62	1	HAIR STEEL ROLLER 2" DIA. 1/2" THICK		
63	1	HAIR STEEL ROLLER 2" DIA. 1/2" THICK		
64	1	HAIR STEEL ROLLER 2" DIA. 1/2" THICK		
65	1	HAIR STEEL ROLLER 2" DIA. 1/2" THICK		
66	1	HAIR STEEL ROLLER 2" DIA. 1/2" THICK		
67	1	HAIR STEEL ROLLER 2" DIA. 1/2" THICK		
68	1	HAIR STEEL ROLLER 2" DIA. 1/2" THICK		
69	1	HAIR STEEL ROLLER 2" DIA. 1/2" THICK		
70	1	HAIR STEEL ROLLER 2" DIA. 1/2" THICK		
71	1	HAIR STEEL ROLLER 2" DIA. 1/2" THICK		
72	1	HAIR STEEL ROLLER 2" DIA. 1/2" THICK		
73	1	HAIR STEEL ROLLER 2" DIA. 1/2" THICK		
74	1	HAIR STEEL ROLLER 2" DIA. 1/2" THICK		
75	1	HAIR STEEL ROLLER 2" DIA. 1/2" THICK		
76	1	HAIR STEEL ROLLER 2" DIA. 1/2" THICK		
77	1	HAIR STEEL ROLLER 2" DIA. 1/2" THICK		
78	1	HAIR STEEL ROLLER 2" DIA. 1/2" THICK		
79	1	HAIR STEEL ROLLER 2" DIA. 1/2" THICK		
80	1	HAIR STEEL ROLLER 2" DIA. 1/2" THICK		
81	1	HAIR STEEL ROLLER 2" DIA. 1/2" THICK		
82	1	HAIR STEEL ROLLER 2" DIA. 1/2" THICK		
83	1	HAIR STEEL ROLLER 2" DIA. 1/2" THICK		
84	1	HAIR STEEL ROLLER 2" DIA. 1/2" THICK		
85	1	HAIR STEEL ROLLER 2" DIA. 1/2" THICK		
86	1	HAIR STEEL ROLLER 2" DIA. 1/2" THICK		
87	1	HAIR STEEL ROLLER 2" DIA. 1/2" THICK		
88	1	HAIR STEEL ROLLER 2" DIA. 1/2" THICK		
89	1	HAIR STEEL ROLLER 2" DIA. 1/2" THICK		
90	1	HAIR STEEL ROLLER 2" DIA. 1/2" THICK		
91	1	HAIR STEEL ROLLER 2" DIA. 1/2" THICK		
92	1	HAIR STEEL ROLLER 2" DIA. 1/2" THICK		
93	1	HAIR STEEL ROLLER 2" DIA. 1/2" THICK		
94	1	HAIR STEEL ROLLER 2" DIA. 1/2" THICK		
95	1	HAIR STEEL ROLLER 2" DIA. 1/2" THICK		
96	1	HAIR STEEL ROLLER 2" DIA. 1/2" THICK		
97	1	HAIR STEEL ROLLER 2" DIA. 1/2" THICK		
98	1	HAIR STEEL ROLLER 2" DIA. 1/2" THICK		
99	1	HAIR STEEL ROLLER 2" DIA. 1/2" THICK		
100	1	HAIR STEEL ROLLER 2" DIA. 1/2" THICK		



# BILL OF MATERIAL

NO. OF RUNWAYS - 1 AT 250'

INTERMEDIATE SUPP. R. BRKT.

18' 4" 2x2x1/4 @ 15" Lg.

END SUPPORT BRKT.

2 4x4x3/8 @ 15' Lg.

9/0# ASCE

MIT 15" C

2x2x1/4 4

3/8 DIA. HOLES

30WF

INTERMEDIATE SUPPORTS - 5' C TO C

50/10 TON  
VICKSBURG, MISS.

CRANE HOIST ENGR. CORP.

ANGLE SUPPORT BRACKETS

SCALE: None DRAWN: ER

BRIDGE: DO JOB NO. 2088A

CRANE HOIST ENGINEERING CORP.

303 FRIO STREET

P. O. BOX 5410

HOUSTON 12, TEXAS

END SUPPORTS

BOTTOM OF COLLECTORS

1" SQ. BAR

5"

1 1/2"

5 3/8" NTS

1 1/4" NTS

5 3/8"

2"

2"

3 3/8" NTS

1 3/4" NTS

4x4x3/8 4

30WF

3/8 DIA. HOLES

3/8"

3/8" WIRE

1"

2 1/2"

2 1/2"

9"

1"

2 1/2"

2 1/2"

9"

1"

2 1/2"

2 1/2"

9"

1"

2 1/2"

2 1/2"

9"

1"

2 1/2"

2 1/2"

9"

1"

2 1/2"

2 1/2"

9"

1"

2 1/2"

2 1/2"

9"

1"

2 1/2"

2 1/2"

9"

1"

2 1/2"

2 1/2"

9"

1"

2 1/2"

2 1/2"

9"

1"

2 1/2"

2 1/2"

9"

1"

2 1/2"

2 1/2"

9"

1"

2 1/2"

2 1/2"

9"

1"

2 1/2"

2 1/2"

9"

1"

2 1/2"

2 1/2"

9"

1"

2 1/2"

2 1/2"

9"

1"

2 1/2"

2 1/2"

9"

1"

2 1/2"

2 1/2"

9"

1"

2 1/2"

2 1/2"

9"

1"

2 1/2"

2 1/2"

9"

1"

2 1/2"

2 1/2"

9"

1"

2 1/2"

2 1/2"

9"

1"

2 1/2"

2 1/2"

9"

1"

2 1/2"

2 1/2"

9"

1"

2 1/2"

2 1/2"

9"

1"

2 1/2"

2 1/2"

9"

1"

2 1/2"

2 1/2"

9"

1"

2 1/2"

2 1/2"

9"

1"

2 1/2"

2 1/2"

9"

1"

2 1/2"

2 1/2"

9"

1"

2 1/2"

2 1/2"

9"

1"

2 1/2"

2 1/2"

9"

1"

2 1/2"

2 1/2"

9"

1"

2 1/2"

2 1/2"

9"

1"

2 1/2"

2 1/2"

9"

1"

2 1/2"

2 1/2"

9"

1"

2 1/2"

2 1/2"

9"

1"

2 1/2"

2 1/2"

9"

1"

2 1/2"

2 1/2"

9"

1"

2 1/2"

2 1/2"

9"

1"

2 1/2"

2 1/2"

9"

1"

2 1/2"

2 1/2"

9"

1"

2 1/2"

2 1/2"

9"

1"

2 1/2"

2 1/2"

9"

1"

2 1/2"

2 1/2"

9"

1"

2 1/2"

2 1/2"

9"

1"

2 1/2"

2 1/2"

9"

1"

2 1/2"

2 1/2"

9"

1"

2 1/2"

2 1/2"

9"

1"

2 1/2"

2 1/2"

9"

1"

2 1/2"

2 1/2"

9"

1"

2 1/2"

2 1/2"

9"

1"

2 1/2"

2 1/2"

9"

1"

2 1/2"

2 1/2"

9"

1"

2 1/2"

2 1/2"

9"

1"

2 1/2"

2 1/2"

9"

1"

2 1/2"

2 1/2"

9"

1"

2 1/2"

2 1/2"

9"

1"

2 1/2"

2 1/2"

9"

1"

2 1/2"

2 1/2"

9"

1"

2 1/2"

2 1/2"

9"

1"

2 1/2"

2 1/2"

9"

1"

2 1/2"

2 1/2"

9"

1"

2 1/2"

2 1/2"



