

- NOTES:
101. ALL DIMENSIONS ARE IN MILLIMETERS (mm) AND VALUES ARE IN SI UNITS. DIMENSIONS AND VALUES IN BRACKETS ARE U.S. CUSTOMARY UNITS (inch) CONVERTED FROM MILLIMETERS / SI UNITS.
107. INSPECTION / ACCEPTANCE TO BE MEASURED AND RECORDED IN SI UNITS.
- 109b. ESTIMATED WEIGHT IS 984.4 KG, ( 984.45 LBM )
- 901 DRAWINGS REPRESENT MECHANICAL LIMITATIONS OF YOKE PRE-ASSY.
- 902 FEATURES NOT EXPLICITLY SPECIFIED ARE SUBJECT TO VENDOR SPECIFICATION AND LBNL APPROVAL.
- 903 WELD SIZES NOT SPECIFIED TO BE DETERMINED BY THE VENDOR
- 904 RETROREFLECTOR NEST TO BE PURCHASED BY LBNL AND SUPPLIED TO VENDOR
- 905 HOLES MARKED-L ARE HOIST POTENTIAL RING ATTACHMENT POINTS. IF LIFTING FIXTURE IS NECESSARY, THEN IT IS TO BE DESIGNED BY VENDOR. LIFTING FIXTURE MUS FIT WITHIN FOOTPRINT OF MAGNETIC YOKE. ADDITIONAL LIFTING FIXTURE FEATURE SUBJECT TO LBNL APPROVAL
- 906 YOKE ALIGNMENT FEATURES TO BE DESIGNED BY VENDOR. ALIGNMENT FEATURES MUST SATISFY MULTIPLOLE AND ALIGNMENT REQUIREMENTS SPECIFIED IN MECHANICAL REQUIREMENTS DOCUMENT, AND FIT WITHIN MAGNETIC FOOTPRINT
907. YOKE FEATURES:
- YOKE ARE SYMMETRIC TO THE CENTERLINE
  - YOKE IS A LAMINATED SHEET CONSTRUCTIONS, STACKED, BONDED, WELDED
  - LAMINATION SHEET MATERIAL; M36 SILICON STEEL. THICKNESS TO BE DETERMINED
  - LAMINATION SHEET TO BE DESIGNED BY VENDOR
  - YOKE INTERFACE SURFACES MAY REQUIRE POST MACHINING CLEANUP ON BOTH UPPER AND LOWER YOKE

CHANGE DESCRIPTION (SEE LBNL PDM FOR REV HISTORY)		UNLESS OTHERWISE SPECIFIED		PROJECT NAME		ERNEST ORLANDO LAWRENCE BERKELEY NATIONAL LABORATORY UNIVERSITY OF CALIFORNIA			
BASELINE RELEASE		ESTIMATED MASS 984.447 LBM		ADVANCED LIGHT SOURCE		ALS-U - BOOSTER TO ACCUMULATOR TRANSFER LINE			
AUTHOR	San Mateo, Ed	TOLERANCE X± - .XX±0.05 .XXX±0.001		DRW REF DOC	DRAWING UNITS	MAGNETS - GENERAL			
CHECKED BY	ssoezeri	FRACTIONS: ± - / - -		EG-1000-0923	mm·kg·s	BTA MAGNET DIPOLE-TBENDA			
CHECKED AT	Jun 24 2021 12:47:09 PM PDT	ANGLES: ± - / - -		SCALE	THIRD ANGLE				
RELEASED BY	CASwenson	MACH. SURFS.: 3.2um ✓ or better		1:4					
RELEASED AT	Jun 24 2021 3:57:34 PM PDT	REFERENCE -THREADS ARE CLASS G or H -BREAK EDGES 0.5 MAX, ON MACHINED WORK -REMOVE BURRS, WELD SPLATTER & LOOSE SCALE		PRINT NOT TO SCALE					
THIS DRAWING IS THE PROPERTY OF ERNEST ORLANDO LAWRENCE BERKELEY NATIONAL LABORATORY (LBNL) AND ANYTHING PRODUCED FROM THESE DRAWINGS IS SUBJECT TO LBNL'S INTELLECTUAL PROPERTY RIGHTS. THIS DRAWING IS LOANED ON A CONFIDENTIAL BASIS SUBJECT TO RETURN ON DEMAND AND NOTHING HEREIN MAY BE REPRODUCED, USED OR DISCLOSED IN WHOLE OR PART WITHOUT PRIOR WRITTEN PERMISSION OF LBNL.				SHEET SIZE	SHEET	CATEGORY CODE	LIFECYCLE STATE	ITEM NUMBER	REV
				D	1 OF 5	AL7210	Released	AL-1262-9077	A

D

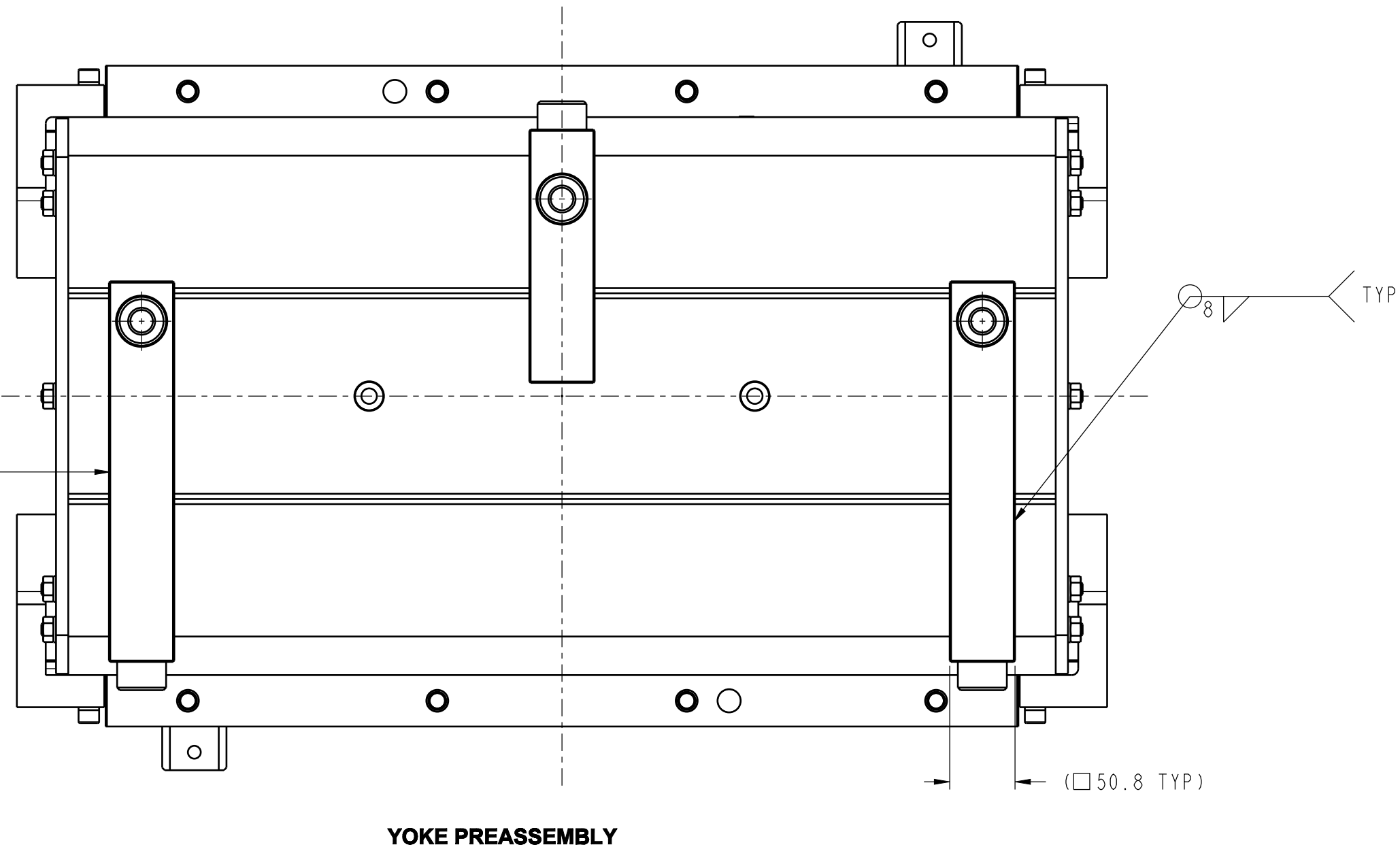
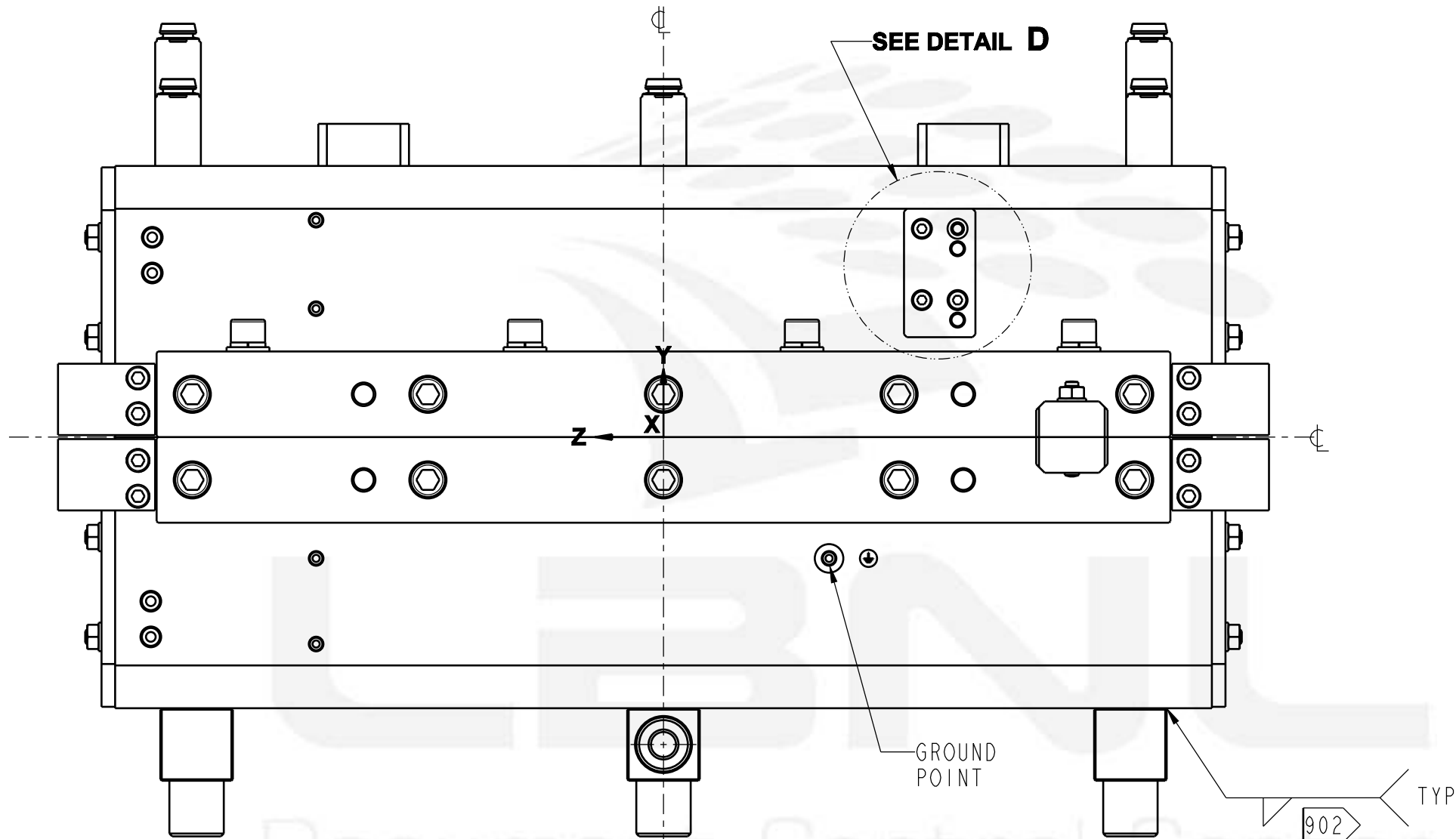
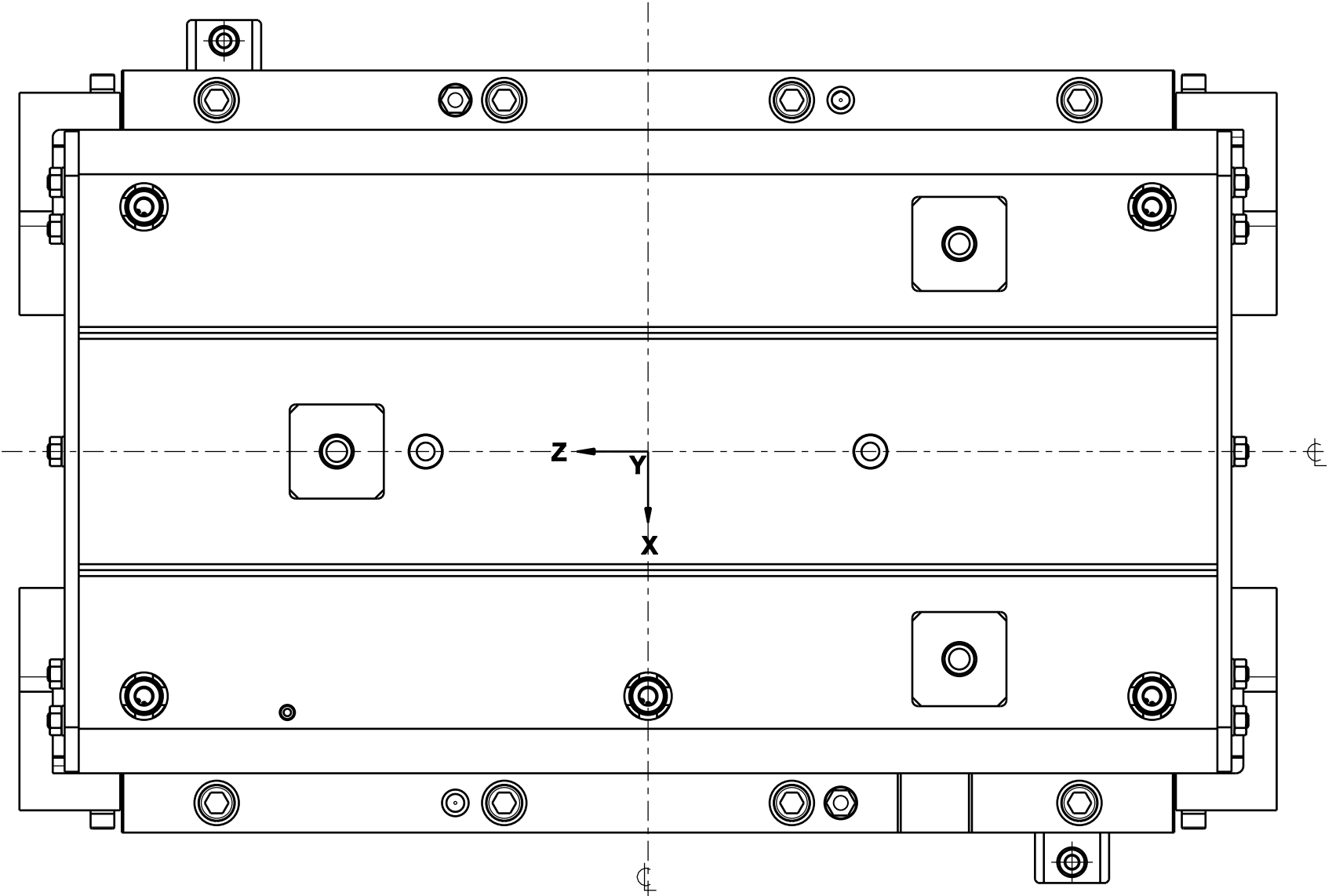
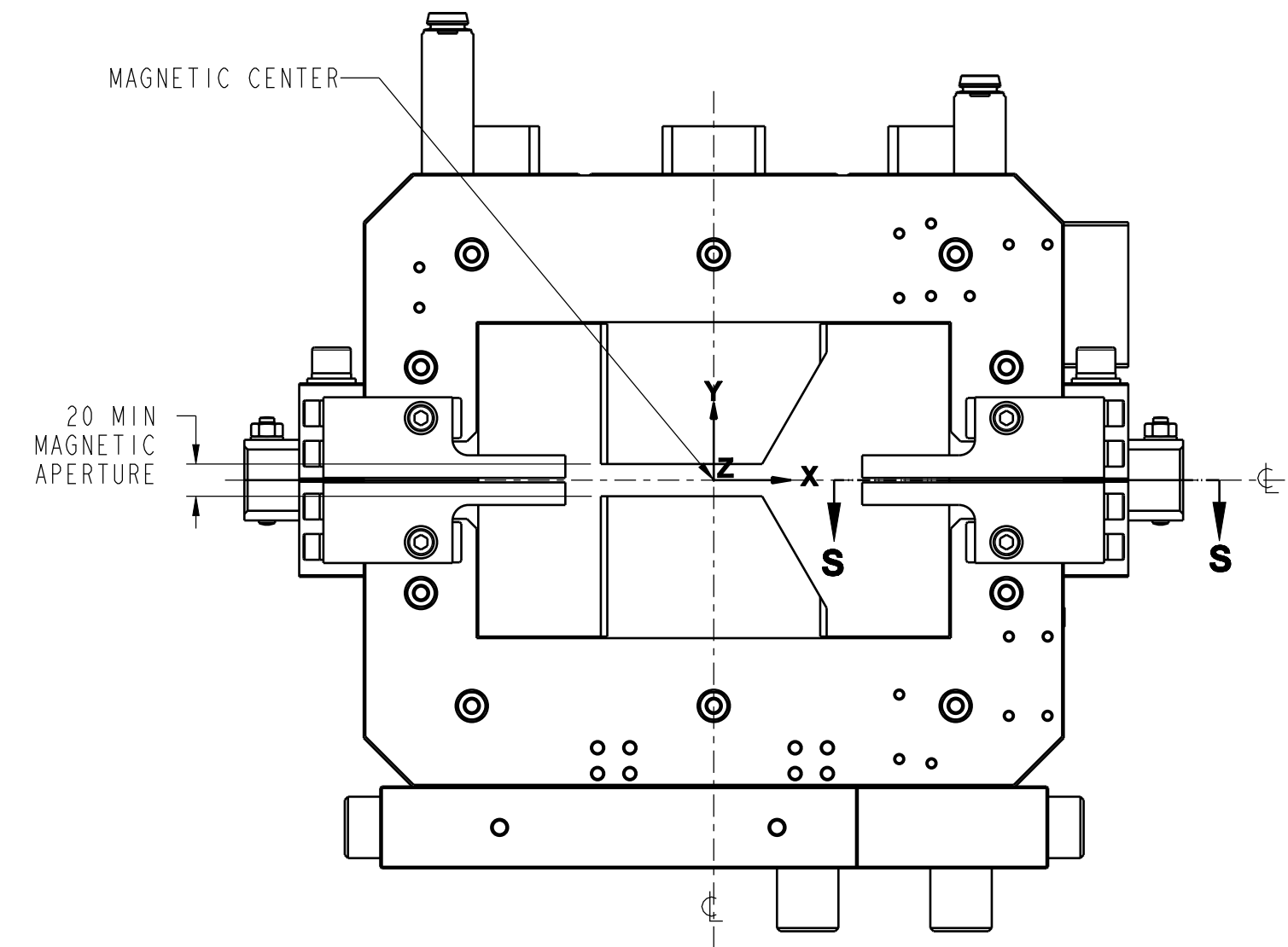
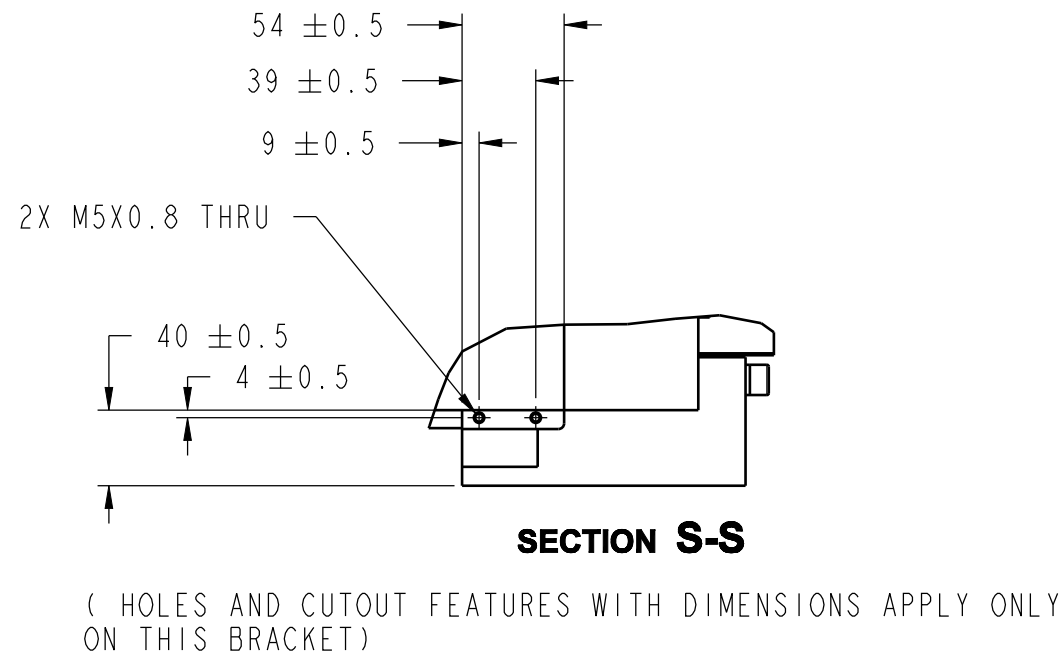
C

B

D

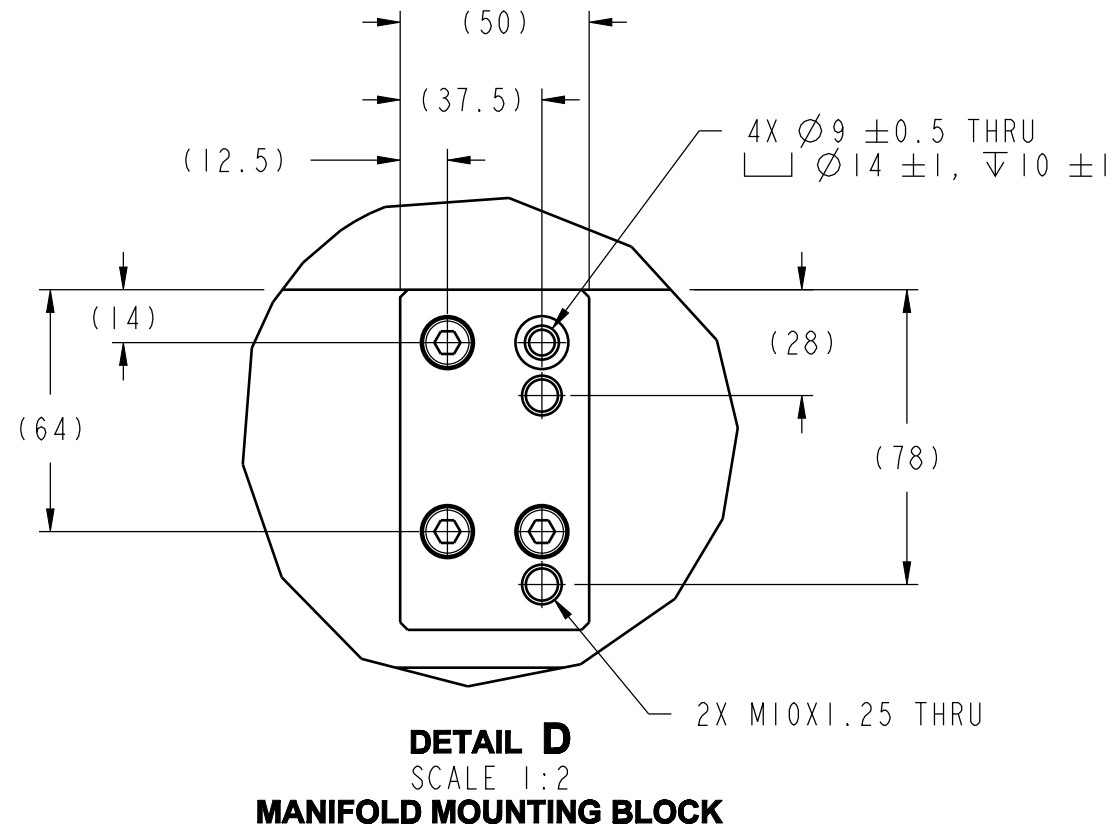
C

A

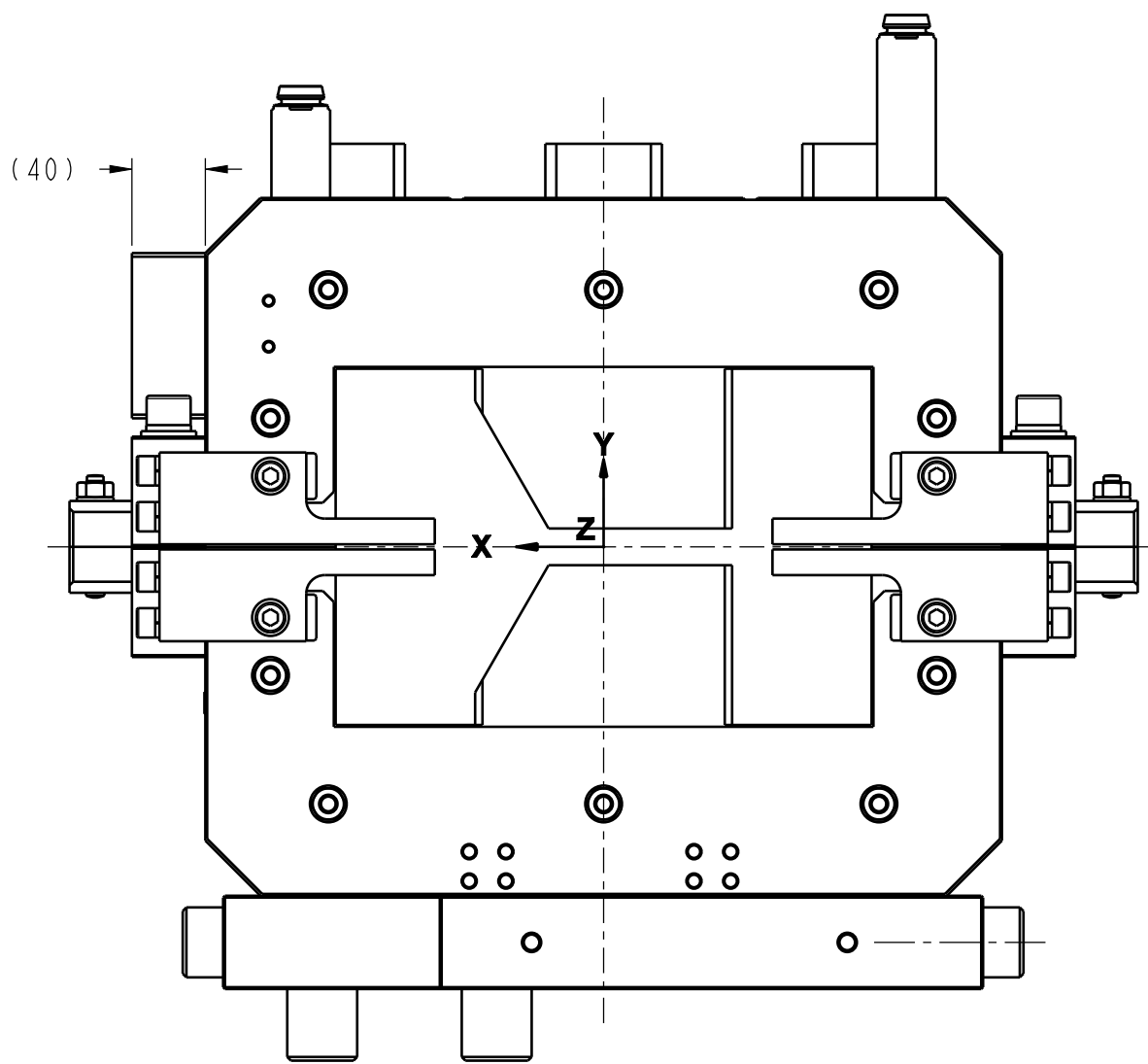


**YOKE PREASSEMBLY**

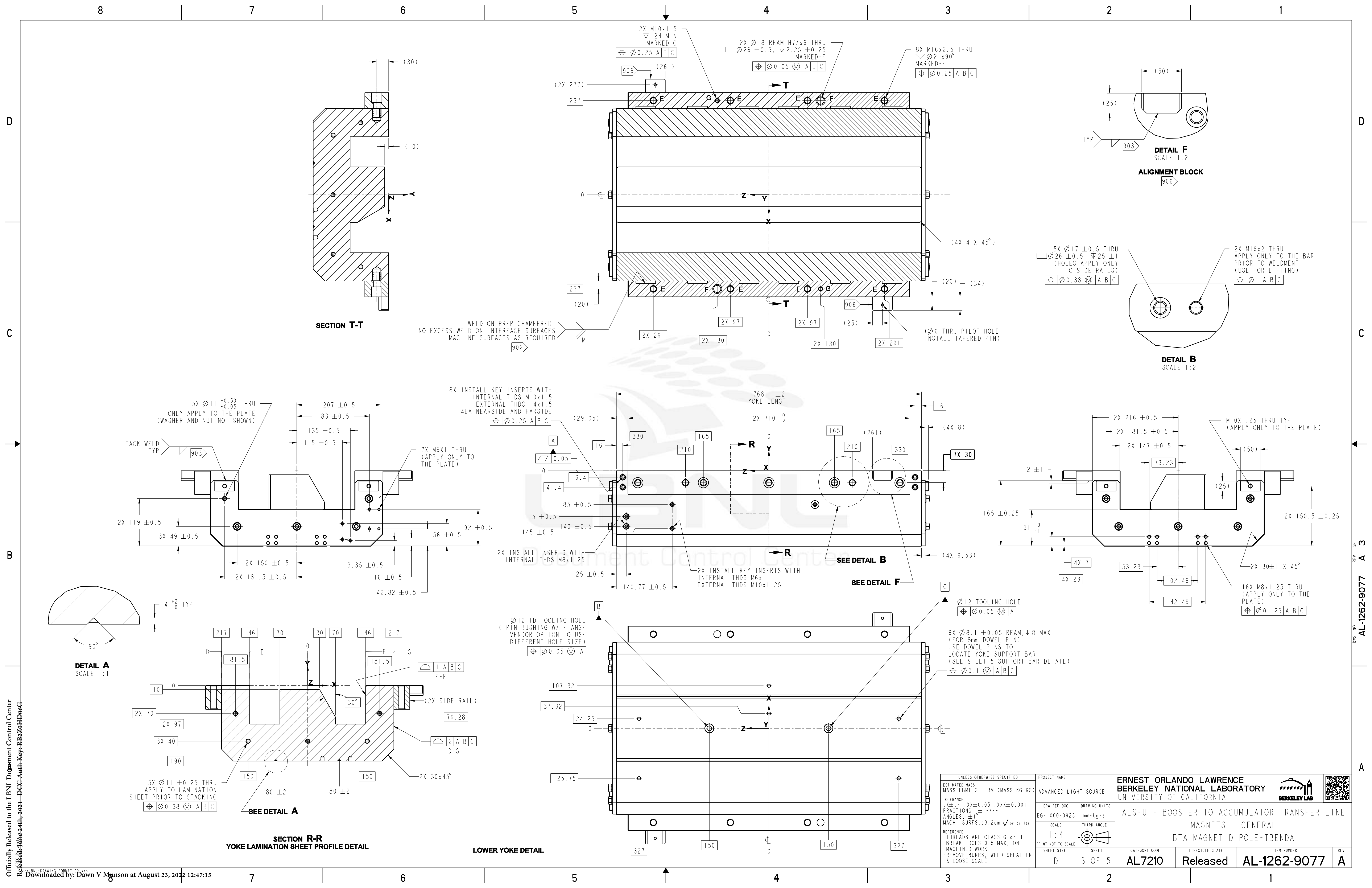
SEE SHEET 5 FOR SUPPORT BARS DETAIL



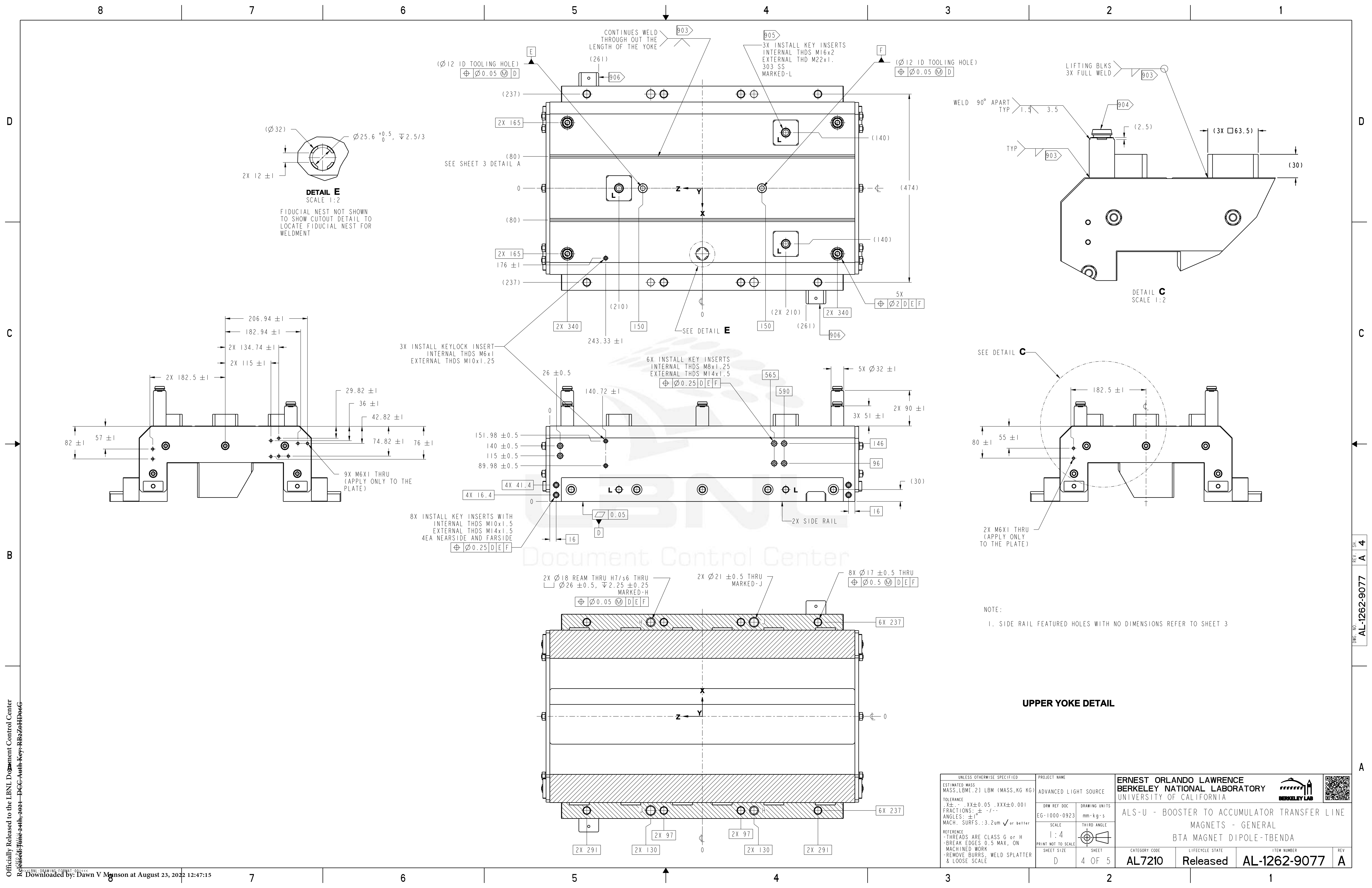
**DETAIL D**  
SCALE 1:2  
**MANIFOLD MOUNTING BLOCK**



UNLESS OTHERWISE SPECIFIED		PROJECT NAME		ERNEST ORLANDO LAWRENCE BERKELEY NATIONAL LABORATORY UNIVERSITY OF CALIFORNIA			
ESTIMATED MASS MASS: LBM(.21 LBM (MASS: KG (KG)		ADVANCED LIGHT SOURCE		ALS-U - BOOSTER TO ACCUMULATOR TRANSFER LINE MAGNETS - GENERAL BTA MAGNET DIPOLE-TBENDA			
TOLERANCE X ± . . XX ± 0.05 . XXX ± 0.001 FRACTIONS: ± - / - - ANGLES: ± / - MACH. SURFS.: 3.2um ✓ or better		DRW REF DOC EG-1000-0923	DRAWING UNITS mm-kg-s				
REFERENCE - THREADS ARE CLASS G or H - BREAK EDGES 0.5 MAX, ON MACHINED WORK - REMOVE BURRS, WELD SPLATTER & LOOSE SCALE		SCALE 1:4 PRINT NOT TO SCALE	THIRD ANGLE 	CATEGORY CODE AL7210	LIFECYCLE STATE Released	ITEM NUMBER AL-1262-9077	REV A
SHEET SIZE D		SHEET 2 OF 5					



UNLESS OTHERWISE SPECIFIED		PROJECT NAME		ERNEST ORLANDO LAWRENCE BERKELEY NATIONAL LABORATORY UNIVERSITY OF CALIFORNIA	
ESTIMATED MASS MASS: LBM [ 21 LBM (MASS-KG KG) ]		ADVANCED LIGHT SOURCE		ALS-U - BOOSTER TO ACCUMULATOR TRANSFER LINE	
TOLERANCE ± . . . XX ± 0.05 . . . XXX ± 0.001 FRACTIONS: ± - / - - ANGLES: ± - / - - MACH. SURFS.: 3.2um ✓ or better		DRAWING UNITS EG-1000-0923		MAGNETS - GENERAL	
REFERENCE - THREADS ARE CLASS G or H - BREAK EDGES 0.5 MAX, ON MACHINED WORK - REMOVE BURRS, WELD SPLATTER & LOOSE SCALE		SCALE 1:4 PRINT NOT TO SCALE		BTA MAGNET DIPOLE-TBENDA	
SHEET SIZE D		SHEET 3 OF 5		CATEGORY CODE AL7210	REV A
		LIFECYCLE STATE Released		ITEM NUMBER AL-1262-9077	



UNLESS OTHERWISE SPECIFIED		PROJECT NAME		ERNEST ORLANDO LAWRENCE BERKELEY NATIONAL LABORATORY UNIVERSITY OF CALIFORNIA	
ESTIMATED MASS MASS: LBM(1.21 LBM (MASS: KG (KG))		ADVANCED LIGHT SOURCE		ALS-U - BOOSTER TO ACCUMULATOR TRANSFER LINE	
TOLERANCE X ± . . XX ± 0.05 . . XXX ± 0.001 FRACTIONS: ± - / - - ANGLES: ± ° ' - - MACH. SURFS.: 3.2um ✓ or better		DRW REF DOC	DRAWING UNITS	MAGNETS - GENERAL	
REFERENCE - THREADS ARE CLASS G or H - BREAK EDGES 0.5 MAX, ON MACHINED WORK - REMOVE BURRS, WELD SPLATTER & LOOSE SCALE		SCALE	THIRD ANGLE	BTA MAGNET DIPOLE-TBENDA	
PRINT NOT TO SCALE		1:4			
SHEET SIZE		D	SHEET	CATEGORY CODE	REV
4 OF 5				AL7210	A
				LIFECYCLE STATE	ITEM NUMBER
				Released	AL-1262-9077



