

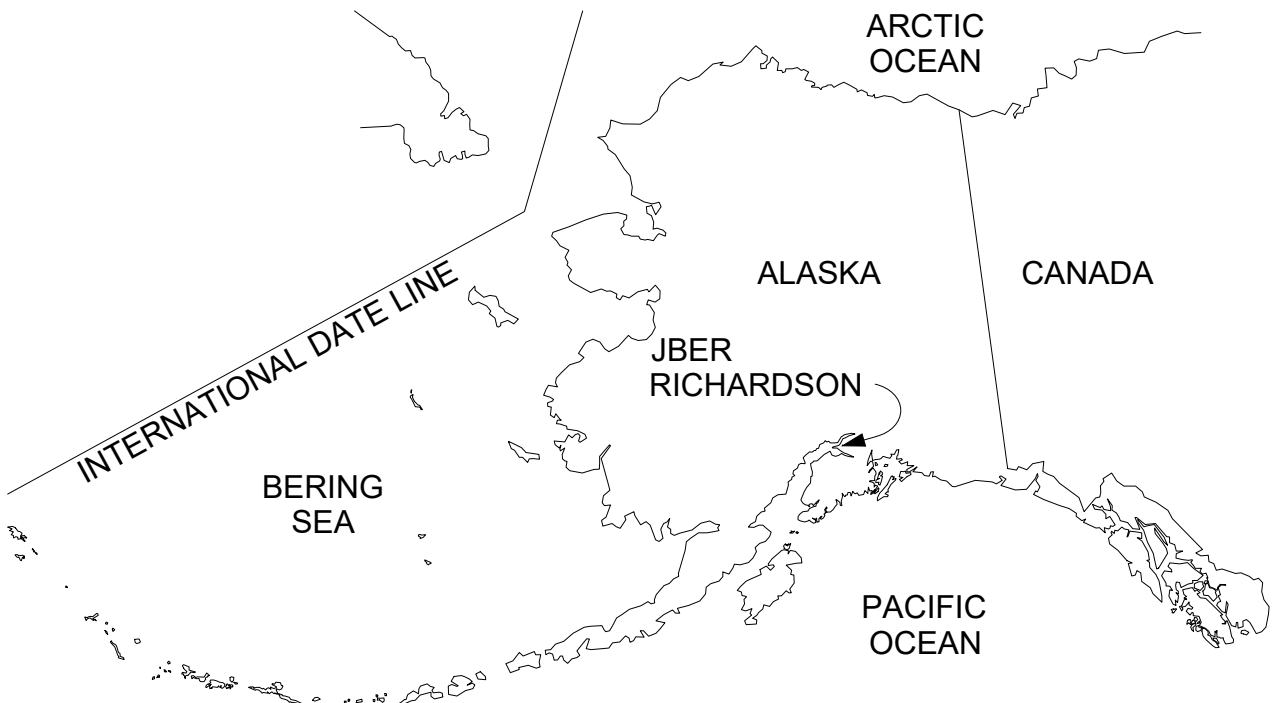


PROJECT No. HJZH 21-1099

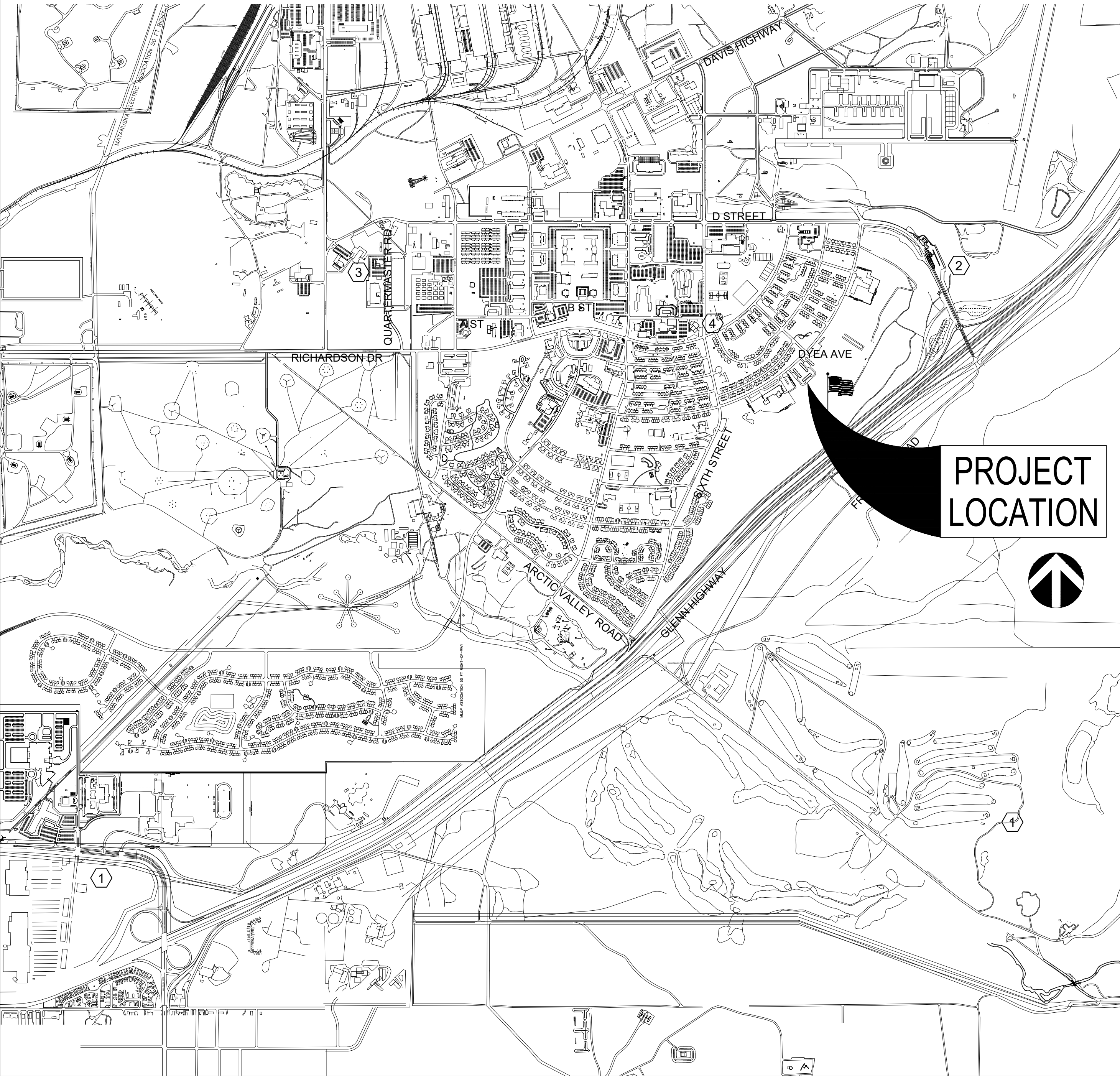
DEMO UNACCOMPANIED HOUSING
(MULTI FACILTY)

JBER - RICHARDSON, ALASKA

LOCATION MAP



VICINITY MAP



GENERAL NOTES

- AT NO TIME WILL THE CONTRACTORS WORK, STORAGE OF MATERIALS, PARKING OF VEHICLES OR OTHER ACTIVITIES BE ALLOWED TO INTERFERE WITH THE WORK ACTIVITIES OF GOVERNMENT PERSONNEL OR TO DAMAGE GOVERNMENT OR PRIVATE PROPERTY.
- PARKING SHALL BE ALLOWED IN APPROVED PARKING SPACES ONLY. VEHICLES OTHERWISE PARKED SO WILL BE REMOVED AT THE CONTRACTOR'S EXPENSE.
- THE CONTRACTOR'S MATERIALS AND EQUIPMENT SHALL NOT BE STORED WITHIN TWENTY (20) FEET OF ANY BUILDING, OBSTRUCT FIRE EXITS OR OTHERWISE INTERFERE WITH FIRE FIGHTING FACILITIES. ANY MATERIALS, EQUIPMENT OR VEHICLES DOING SO WILL BE REMOVED AT THE CONTRACTOR'S EXPENSE.
- THE CONTRACTOR SHALL AT ALL TIMES KEEP THE WORK AREA FREE FROM ACCUMULATION OF WASTE MATERIALS. DEBRIS SHALL BE REMOVED ON A DAILY BASIS.
- ALL WELDING AND/OR THE USE OF FLAME PRODUCING DEVICES SHALL BE CLEARED THROUGH THE FIRE DEPARTMENT.
- ALL CONSTRUCTION PERMITS, FEES AND COORDINATION OF ANCILLARY ITEMS SHALL BE THE RESPONSIBILITY OF THE CONTRACTOR.
- THE WORK OF THIS CONTRACT SHALL COMPLY WITH APPLICABLE FEDERAL, STATE AND LOCAL CODES OR STANDARDS. ALL WORK SHALL COMPLY WITH THE MOST RECENT ADOPTED EDITION OF THE CODES OR STANDARDS LISTED BELOW:
- EPA STANDARDS
 - INTERNATIONAL BUILDING CODE (I.B.C.)
 - INTERNATIONAL FUEL GAS CODE (I.F.G.C.)
 - INTERNATIONAL MECHANICAL CODE (I.M.C.)
 - INTERNATIONAL PLUMBING CODE (I.P.C.)
 - NATIONAL ELECTRICAL CODE (N.E.C.)
 - NATIONAL ELECTRICAL SAFETY CODE (N.E.S.C.)
 - NATIONAL FIRE PROTECTION ASSOCIATION (N.F.P.A.)
 - OSHA STANDARDS
 - SHEET METAL & AIR CONDITIONING CONTRACTOR'S NATIONAL ASSOCIATION INC. (SMACNA)
 - FIRE CODES

MAP KEY

SYMBOL	FACILITY
①	MULDOON ENTRANCE GATE
②	RICHARDSON ENTRANCE GATE
③	673 CES BLDG 730
④	FIRE STATION 4 : BLDG. 654

SCHEDULE OF DRAWINGS

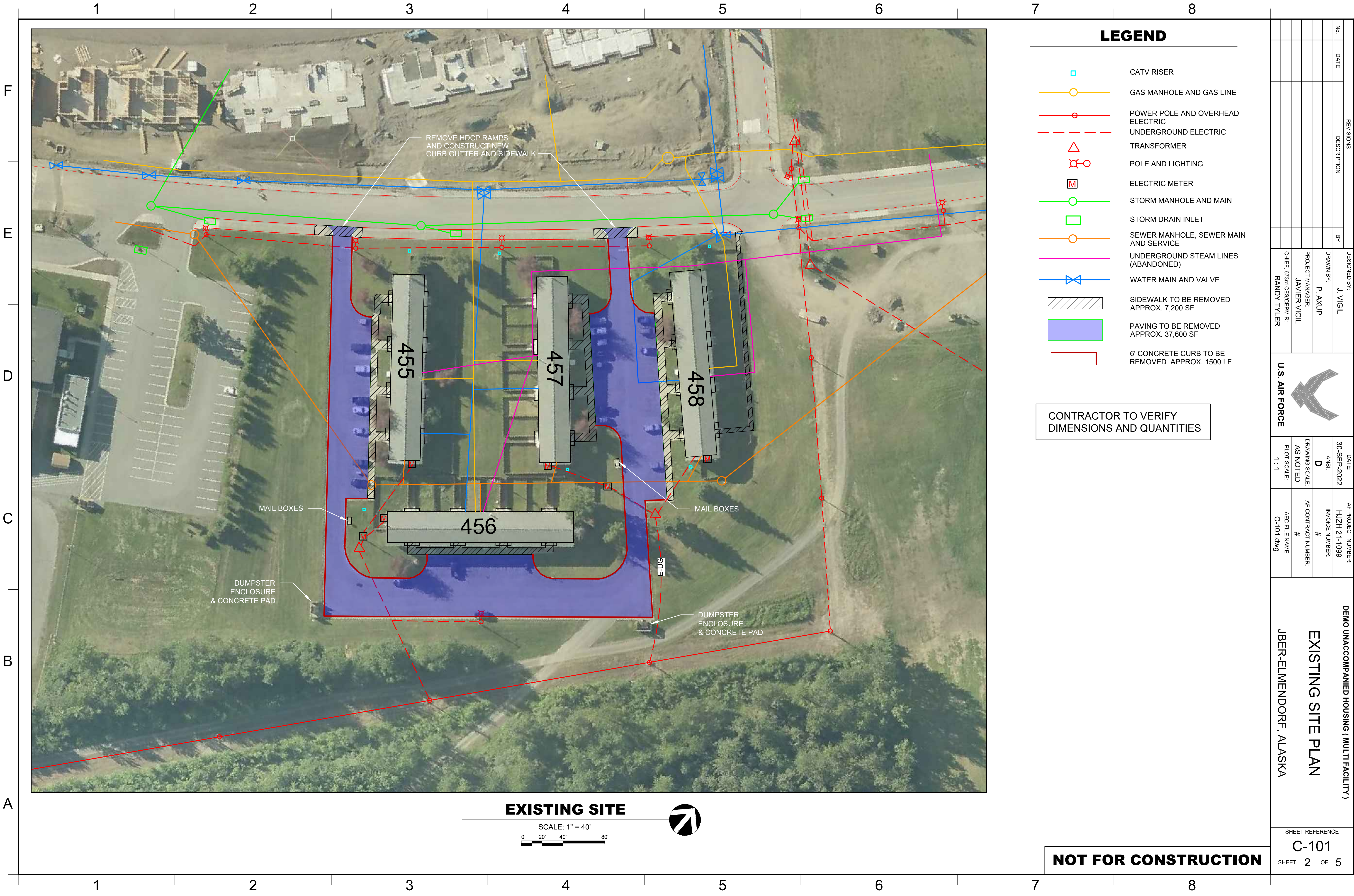
REF	SHEET TITLE	
G-001	COVER SHEET, VICINITY MAP & GENERAL NOTES	1 OF 5
C-101	EXISTING SITE PLAN	2 OF 5
A-701	EXISTING FLOOR PLAN	3 OF 5
A-702	ELEVATION PLAN	4 OF 5
A-703	ELEVATION PLAN	5 OF 5

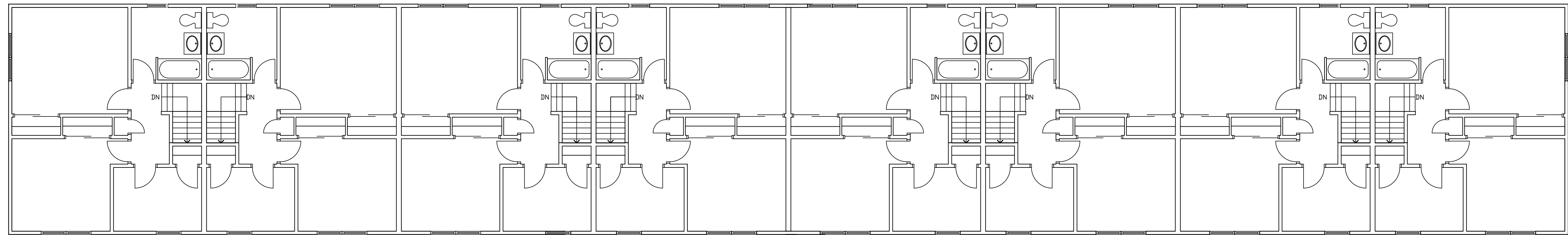
GENERAL DESCRIPTION OF WORK

DEMOLITION OF BASE HOUSING AND SUPPORTING UTILITIES AND REGRADING OF THE SITE.

NOT FOR CONSTRUCTION

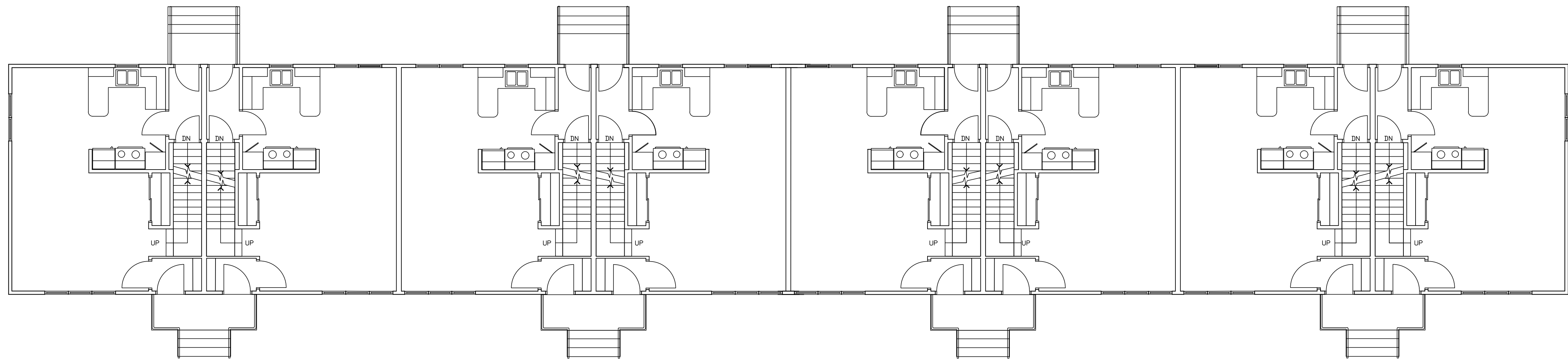
REVISIONS		DESIGNED BY:	DATE:	AF PROJECT NUMBER:	DEMO UNACCOMPANIED HOUSING (MULTI FACILITY) COVER SHEET, NOTES AND DRAWING SCHEDULE JBER-RICHARDSON ALASKA
No.	DATE	DESCRIPTION	BY	INVOICE NUMBER:	
				#	
				AF CONTRACT NUMBER:	
			PROJECT MANAGER:	#	SHEET REFERENCE G-001
			JAVIER VIGIL		
			CHIEF: 6734 CES/CEPAR:		
			DAVID BEAVER		SHEET 1 OF 5



[illegible]

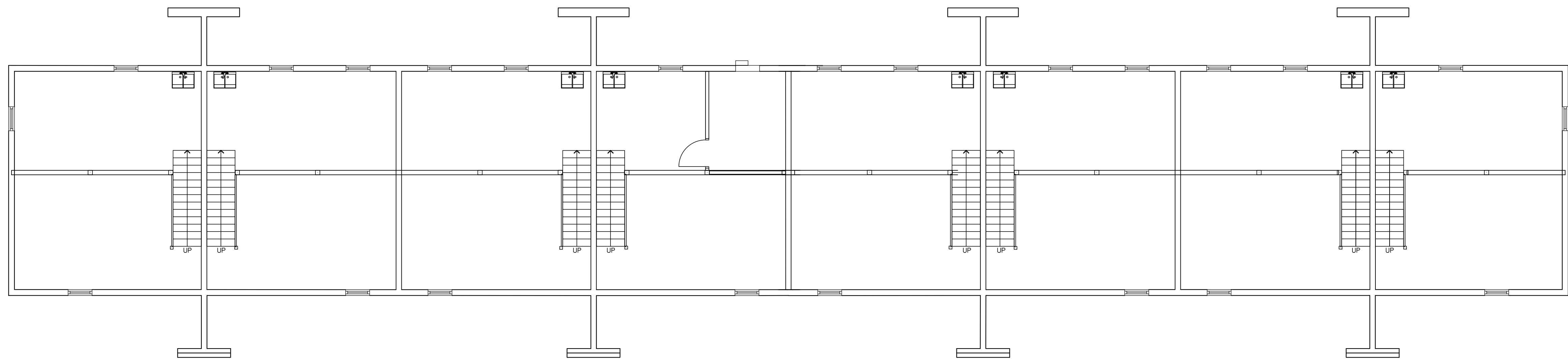
SECOND FLOOR

SCALE: 1/2" = 1'



FIRST FLOOR

SCALE: 1/2" = 1'

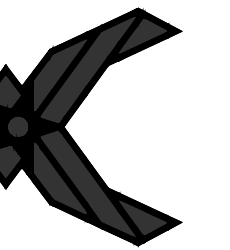


BASEMENT

SCALE: 1/2" = 1'

RECORD DRAWING

REVISIONS			DESIGNED BY:
No.	DATE	DESCRIPTION	BY
			DRAWN BY: P. AXUP
		PROJECT MANAGER: JAVIER VIGIL	
		CHIEF: 0730D CES/CEMR ANDREW D. COTTON	

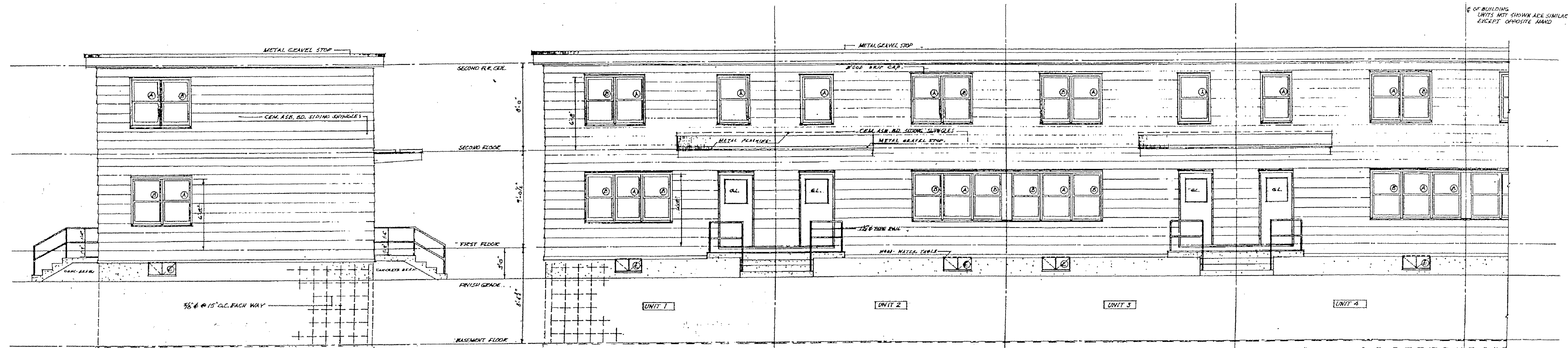


DATE:	AF PROJECT NUMBER:
05-OCT-2022	HJZH 21-1099
ANSI:	INVOICE NUMBER:
D	#
DRAWING SCALE:	AF CONTRACT NUMBER:
AS NOTED	#
PLOT SCALE:	AEC FILE NAME:
	A 700-4-000

EXISTING ELEVATIONS
BLDGS 455, 456, 457, 458

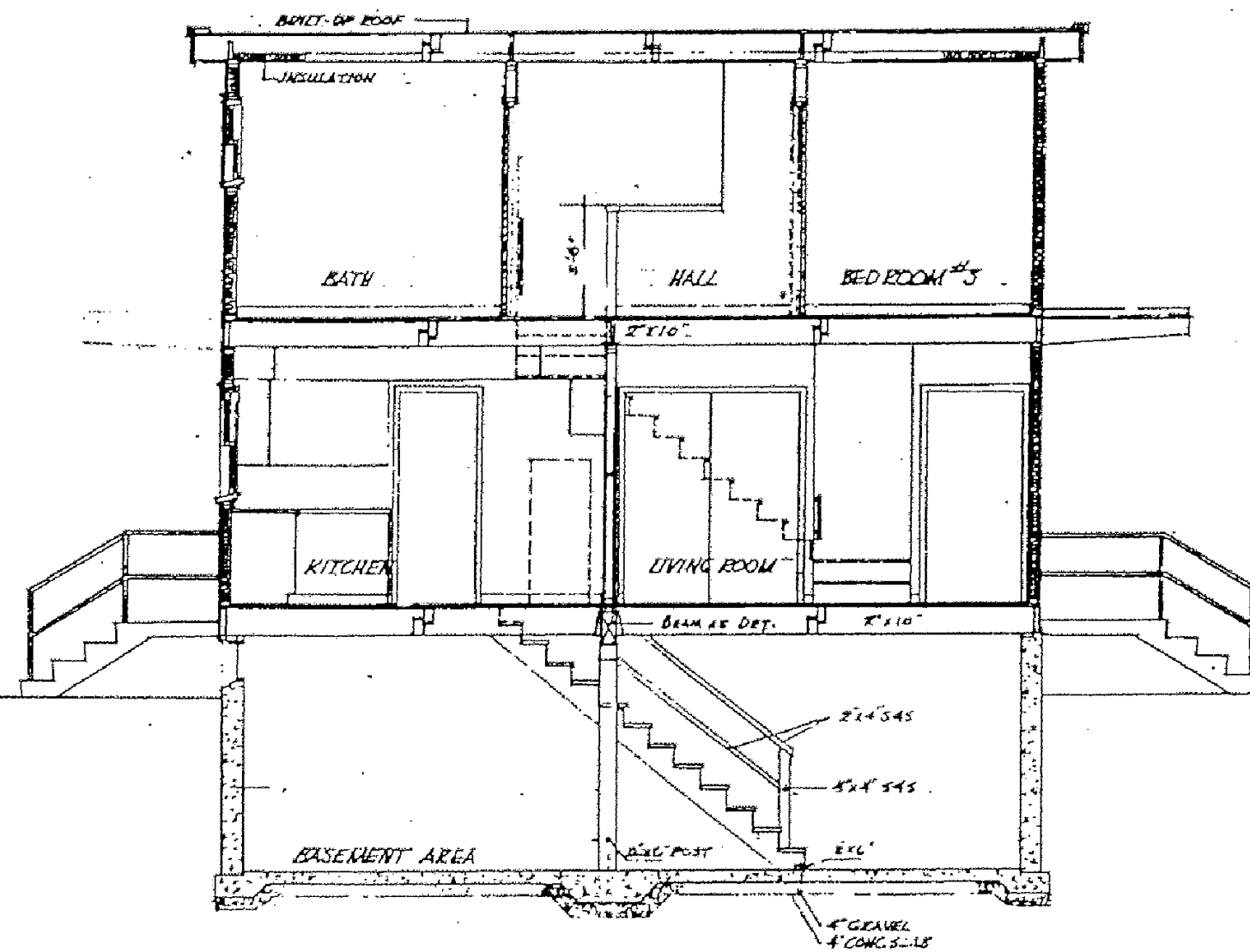
IBER-EL MENDORE ALASKA

MEET REFERENCE
A-702
4 OF 5

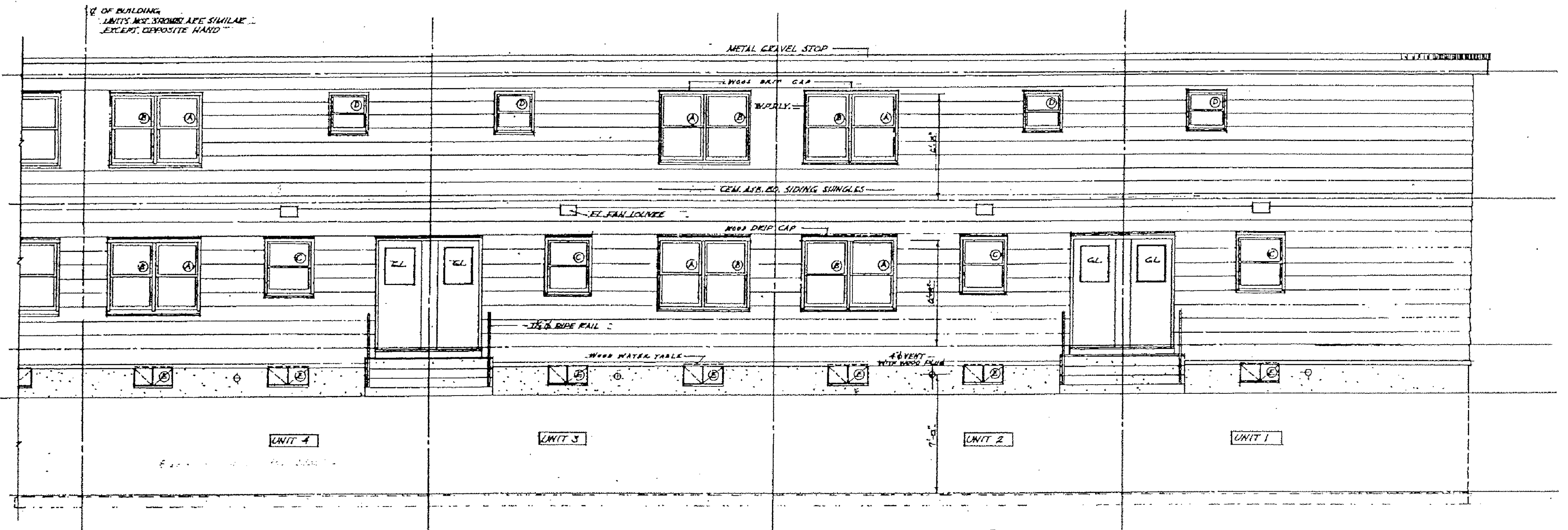


LEFT END ELEVATION SCALE 1/4" = 1'-0"

1/2 FRONT ELEVATION SCALE 1/4" = 1'-0" --"



CROSS SECTION SCALE 1/4" = 1'



1/2 REAR ELEVATION SCALE 1/4" = 1'-0"

EXHIBIT
DRAWINGS

EXISTING BUILDINGS 457 & 458 SUPPLEMENTAL INFORMATION PROVIDED BY OTHERS

NOT
TO SCALE

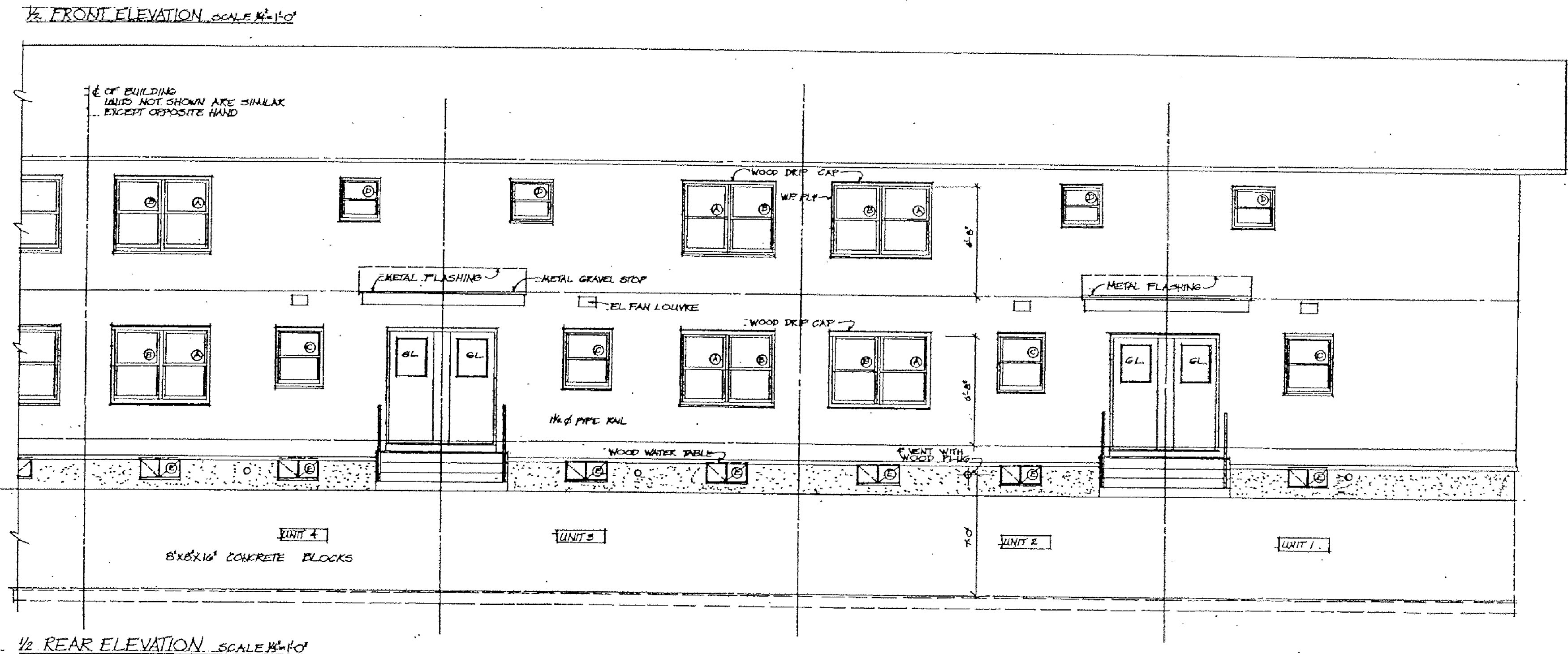
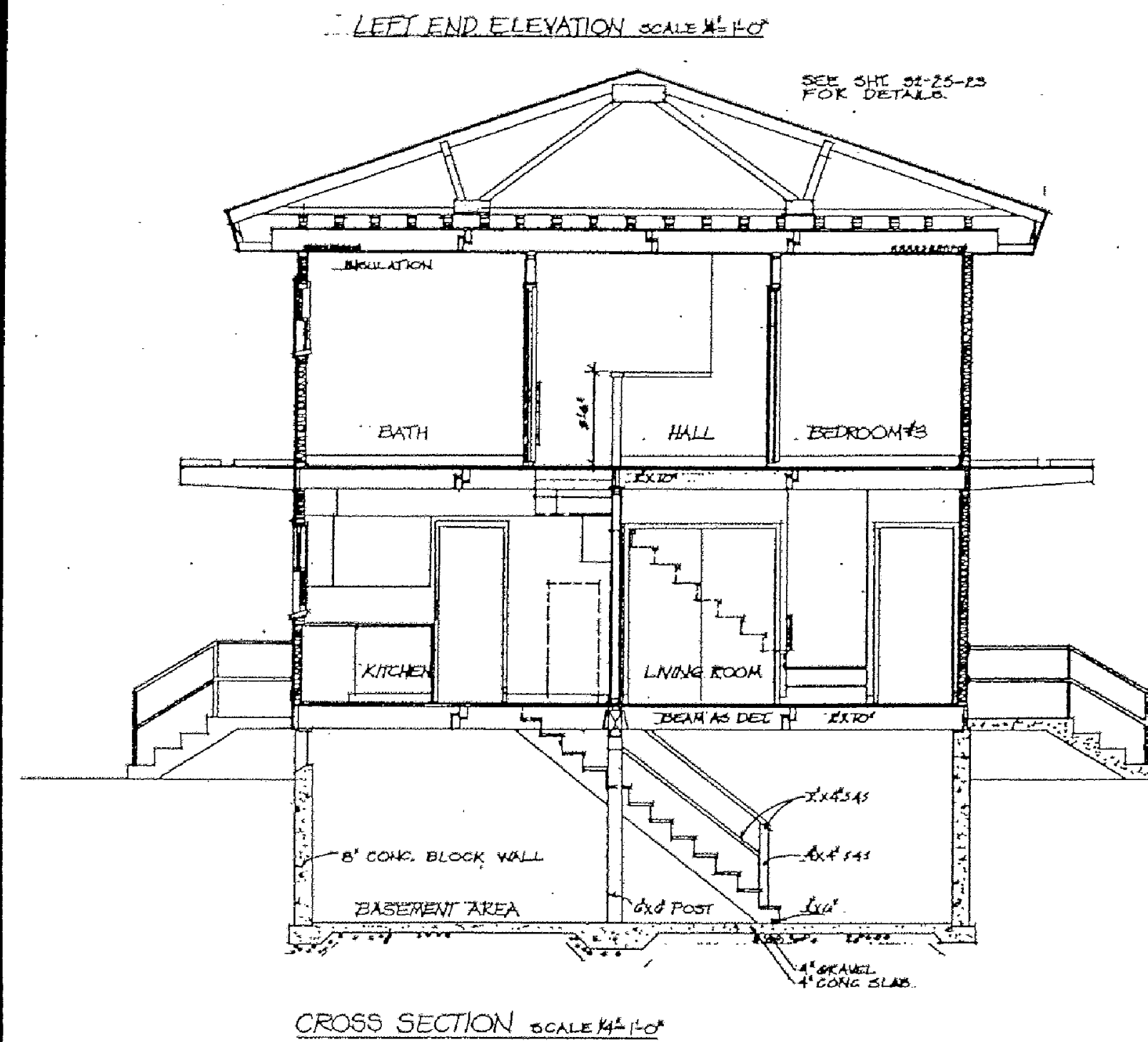
FY01 REVITALIZE BUILDINGS 457 & 458
US ARMY CORPS OF ENGINEERS, ALASKA DISTRICT
FORT RICHARDSON, ALASKA



REPRODUCED
AUGUST, 2001

SYMBOL	GENERAL RETURNED BY DIST. ENGINEER	DATE	BY	APPROVED
<div style="text-align: center;">REVISIONS</div>				
FOSS, WILCOLM AND OLSEN		DEPARTMENT OF THE ARMY		
ARCHITECTS - ENGINEERS		CLASS OF ENGINEERS		
JUREAU ALASKA		OFFICE OF THE DISTRICT ENGINEER		
		ALASKA DISTRICT		
		ANCHORAGE, ALASKA		
DRAWN BY	LF	FORT RICHARDSON, ALASKA		
TRACED BY	LF	THREE BED ROOM-8 FAMILY QUARTER:		
CHECKED BY	LB	N. C. O. 1080 SQ. FT.		
SUBMITTED BY	LF	ARCHITECTURAL		
APPROVED REG. BY	LF	ELEVATIONS & SECTION		
CHIEF ENGINEER	LF	DATE: 29 Feb 53		
APPROVED:	LF	ENGINEER IN CHARGE, DISTRICT		
CHIEF ENGINEER, DISTRICT	LF	SCALE: 1" = 10' 0"		
APPROVED FOR:		DRAWING NUMBER		
		25-01-43		
DATE		SHEET 3 OF 8		

RECORD DRAWING



NOT
TO SCALE

REPRODUCED
AUGUST, 2001

1 2 3 4 5 6 7 8

PR	Day 12
F 15-01-49	May 12
Sinc of	th 78
3 8	

1 2 3 4 5 6 7 8

DEMO UNACCOMPANIED HOUSING (MULTI FACILITY)
EXISTING ELEVATIONS
BLDGS 455, 456, 457, 458
JBER-ELMENDORF, ALASKA

SHEET REFERENCE
A-703
SHEET 5 OF 5