

STATEMENT OF WORK

Durango Parking Lot Fence and Gate Project

Durango, CO

FY 2023

Contents

SECTION A - DESCRIPTION – STATEMENT OF OBJECTIVES	3
A.1 – GENERAL REQUIREMENTS	3
A.1.1 – PROJECT OBJECTIVES	3
A.1.2 - LOCATION OF PROJECT	3
A.1.3 – SCOPE OF CONTRACT	3
A.1.4 - DESCRIPTION OF WORK	3
A.1.5 - CONTRACT PERIOD	3
A.1.6 DEFINITIONS	3
SECTION A.2 – TECHNICAL REQUIREMENTS	3
A.2.1 - BLM WILL FURNISH OR PROVIDE THE FOLLOWING	3
A.2.2 - CONTRACTOR WILL FURNISH	4
A.2.3 - ACCESS	4
A.2.4 – OPERATIONS PLAN	4
A.2.5 - COR/PI	4
A.2.6 - ENVIRONMENTAL CONSIDERATIONS	4
A.2.8 - FIRE STIPULATIONS	4
A.2.9 - HAZARDOUS MATERIALS	6
A.2.10 - PROTECTION	6
A.2.14 - INJURIES AND DAMAGE	6
A.2.15 - SIMULTANEOUS USE OF AREA	6
A.2.16 - SPARK ARRESTERS	6
A.2.17 - STATUS REPORT	6
A.2.18 - ARCHAEOLOGICAL OR CULTURAL DISCOVERIES	7
A.3 - CONTRACTOR QUALITY CONTROL INSPECTION SYSTEM	7
A.4 - GOVERNMENT INSPECTIONS	7

A.5 -ACCEPTANCE.....	7
A.5.1 Unit Basis	7
A.7 - PAYMENT	7
PART I - THE SCHEDULE.....	7
SECTION B - SPECIAL CONTRACT REQUIREMENTS.....	7
B. 1 - KEY PERSONNEL	7
B.1.2 Substitutions	8
B.2 - PREWORK CONFERENCE	8
B.3 SAFETY PLAN	8
PART III - LIST OF DOCUMENTS, EXHIBITS AND OTHER ATTACHMENTS	8
SECTION C - LIST OF ATTACHMENTS.....	8
C.1 –Location Map	9
C.2 –Gate Replacement	10
C.3 Sale Barn Fence Construction	12
C.4 Big Canyon Fence	13
C.5 Fence Construction Diagram.....	14

SECTION A - DESCRIPTION – STATEMENT OF OBJECTIVES

A.1 – GENERAL REQUIREMENTS

A.1.1 – PROJECT OBJECTIVES

Description of Work: Furnishing labor, equipment, supplies, and materials to install one new steel pipe gates, pipe and materials for metal fence and all materials for buck and pole fence. All work shall be according to the attached specifications and drawings.

A.1.2 - LOCATION OF PROJECT

Location: Work under this contract is located in Durango, Colorado. The work sites are Grandview Ridge, Sale Barn Trailhead, and Big Canyon Trailhead. The work locations are shown on the maps provided.

See attached maps.

A.1.3 – SCOPE OF CONTRACT

The Contractor shall provide all materials and labor to install the fences and gates and identified.

A.1.4 - DESCRIPTION OF WORK

The project

A.1.5 - CONTRACT PERIOD

Work cannot be started until the contract is awarded or after May 1, 2023 and will need to be completed by November 15, 2023.

A.1.6 DEFINITIONS

CO – Contracting Officer

COR – Contracting Officers' Representative

COR/PI - either the COR or the PI

PI – Project Inspector

SECTION A.2 – TECHNICAL REQUIREMENTS

A.2.1 - BLM WILL FURNISH OR PROVIDE THE FOLLOWING

1. Pin flag the location of the fences to be installed.
2. Provide maps and descriptions of the area, and go with the operator around the boundary of the area.
3. Site Visits: May 10, 2023; 10:00 am Sale Barn Parking Lot, Durango Colorado (latitude 37.223878, longitude -107.856603)

Location: Durango, Colorado.

See attached maps.

Previous Work: In 2022 metal gates were installed on Animas City Mountain and Grandview Ridge.

4. A pre-work conference with the contractor awarded the job. Conduct on-site inspections by the PI/COR.

A.2.2 - CONTRACTOR WILL FURNISH

1. Any and all necessary parts, supplies, labor, and equipment to install the gate and fences according to specifications.

2. Transportation for equipment and operators to and from the site.

4. A “Contractors authorized representative” proficient in the English language, on site at all times when working.

A.2.3 - ACCESS

Access is provided Hwy 160, and then via Carbon Junction Road.

A.2.4 – OPERATIONS PLAN

Prior to the commencement of operations, the Contractor shall obtain from the COR written approval of a written operations plan commensurate with the terms and conditions of the contract.

Work must be done in a systematic manner and working through it in a logical manner prescribed in the operations plan.

A.2.5 - COR/PI

COR - Project Inspector

Nathaniel West

Tel. (970) 882-1128

Cell (970) 749-1809

29211 Highway 184

Dolores, CO 81323

A.2.6 - ENVIRONMENTAL CONSIDERATIONS

A.2.6.3 - Contractor shall clean-up all generated litter and dispose of it at an approved sanitary landfill or other location and in a manner approved by the CO/COR.

A.2.6.4 – No work will occur from December 1 through April 30, annually.

A.2.8 - FIRE STIPULATIONS

A.2.8.1. Fire Period and Closed Season

Specific fire prevention measures are listed below and shall be effective for the period April 1 to October 19, which is the defined fire season start and stop dates for the area, of each year. The Bureau of Land Management may change the dates of said period by advance written notice if justified by unusual weather or other conditions. Required tools and equipment shall be kept in serviceable condition and immediately available for initial attack on fires.

A.2.8.2. Substitute Measures

The Contracting Officer Representative may by written notice authorize, substitute measures or equipment or may waive specific requirements during periods of low fire danger.

A.2.8.3. Emergency Measures

The Bureau of Land Management may require emergency measures, including the necessary shutting down of equipment or portions of operations in the project area during periods of fire emergency created by hazardous climatic conditions or when the implementation of Fire Restrictions require.

A.2.8.4. Fire Control

The Contractor shall, independently and in cooperation with the BLM, take all reasonable action to prevent and suppress fires in the project area. Independent initial action shall be prompt and shall include the use of all personnel and equipment available in the project area.

A.2.8.5. Compliance with State Forest Laws

Listing of specific fire precautionary measures herein is not intended to relieve the Contractor in any way from compliance with the State Fire Laws covering fire prevention and suppression equipment, applicable to operations under this contract, permit or license.

A.2.8.6. Fire Precautions

Specific fire precautionary measures are as follows:

a. Fire Extinguishers and Equipment, on Trucks, Tractors, etc.

All power-driven equipment operated by the Contractor on public land, except portable fire pumps, shall be equipped with one fire extinguisher having a UL rating of at least 5 B, C and one "D" handled or long handled round point shove.

d. Extinguishers

One refill for each type or one extra extinguisher sufficient to replace each size extinguisher required on equipment shall be safely stored in the fire tool box or other agreed upon place on the project area that is protected and readily available.

A.2.9 - HAZARDOUS MATERIALS

A.2.9.1 Use of Hazardous Materials and/or petroleum products requires that all appropriate State and Federal Regulations be complied with including, but not limited to, Material Safety Data Sheets (MSDS) on hand and use of necessary Personal Protective Clothing (PPE).

A.2.9.2. On-site disposal of Hazardous Materials or Waste including hydrocarbons is not authorized. On-site disposal will subject the contractor to at least the cost of reclamation and the appropriate disposal of contaminated soil.

A.2.9.3. Incidental (de minimus) leaks from fittings, gaskets or ruptured hoses will not subject the contractor to remedial requirements. They will be considered to be normal and unavoidable losses. Continual leaks will be noted on inspection reports and correction through maintenance required.

A.2.9.4. Maintenance and repair operations that require the draining of engines or hydraulic systems may be conducted on site only if the fluids are captured, containerized, and removed from public lands for proper disposal.

A.2.10 - PROTECTION

The contractor is required to protect cadastral survey markers (brasscaps), bench marks, project markers, bearing trees and other markers and stakes from damage or removal. In case of destruction or removal by the contractor, they will be replaced by the government and the actual cost of replacement deducted from payments due the contractor.

A.2.14 - INJURIES AND DAMAGE

The Contractor, in his operations under this contract, shall not do or omit to do anything by which act or omission any person or property may be injured or damaged and shall indemnify and save the United States harmless from any claim, demand, action, or damages on account of any personal injury or property damage arising by reason of anything done or omitted to be done by the Contractor, his contractors, subcontractors, or the employees of any of them.

A.2.15 - SIMULTANEOUS USE OF AREA

If the CO or Field Office Manager determines that other uses of the contact area will not seriously interfere with the operations of the contractor, he may issue permits, leases, or contracts for the simultaneous use of the contract area by others.

A.2.16 - SPARK ARRESTERS

It is prohibited to operate or use any internal or external combustion engine, on any timber, brush, or grass covered land, including trails traversing such land, without a spark arrester maintained in effective working order and meeting guidelines set forth in National Wildfire Coordinating Group Publication NFES 1363 and 2363.

A.2.17 - STATUS REPORT

Provided an onsite visit has not occurred during the period, the contractor is required to report status of work when any special situations or problems are encountered or once a week (whichever is less). These

reports may be made by telephone to the PI/COR. In the event of extreme weather the Contracting Officer will determine the best course of action based on comments from both the Contractor and PI/COR.

A.2.18 - ARCHAEOLOGICAL OR CULTURAL DISCOVERIES

If in connection with operations under this contract the Contractor, his subcontractors, or the employees of any of them, discovers, encounters, or becomes aware of any objects or sites of cultural value on the contract area such as historical or prehistorical ruins, human remains, graves or grave markers, fossils, or artifacts, the Contractor shall immediately suspend all operations in the vicinity of the cultural value and shall notify the COR of the findings. Operations may resume at the discovery site upon receipt of written instructions and authorization by the COR.

A.3 - CONTRACTOR QUALITY CONTROL INSPECTION SYSTEM

The Contractor shall propose and adopt a quality control inspection system to ensure that the work is progressing in compliance with specifications. Complete records of all inspection work performed by the Contractor shall be maintained and made available to the Government during the contract performance.

A.4 - GOVERNMENT INSPECTIONS

The Government will make periodic inspections as a basis for payments and recommendations for adjustments in work quality while work is in progress.

A.5 -ACCEPTANCE

A.5.1 Unit Basis

Work will be accepted or rejected on an individual project basin.

A.7 - PAYMENT

Payment will be based on the Government's inspection results. The Contractor's inspection results are to be used as a guide for the Contractor's use in complying with contract specifications and not as a basis for payment. Payment will be made once all work is complete, inspected and accepted by the Government.

PART I - THE SCHEDULE

SECTION B - SPECIAL CONTRACT REQUIREMENTS

B. 1 - KEY PERSONNEL

The Contractor shall assign to this contract key personnel that list may include the following:

- CONTRACTOR REPRESENTATIVE
- FOREMAN
- INSPECTOR

B.1.2 Substitutions

The Contractor shall make no substitutions of key personnel without notifying the Contracting Officer within a reasonable timeframe and in advance, and shall submit justification (including proposed substitutions) in sufficient detail to permit evaluation of the impact on the contract. Proposed substitutes should have comparable qualifications to those of the persons being replaced.

- The Contractor shall make no diversion of key personnel without the written consent of the Contracting Officer.
- The contract will be modified to reflect any approved changes of key personnel.
- The Contractor's contractor representative shall be fully conversant in the English language.

B.2 - PREWORK CONFERENCE

Prior to commencement of work, the Contractor shall attend a meeting to discuss the contract terms, work performance requirements, and safety. Also at this meeting such items as work progress schedule, quality control, camping/worksites plan, and fire prevention plans shall be finalized in writing.

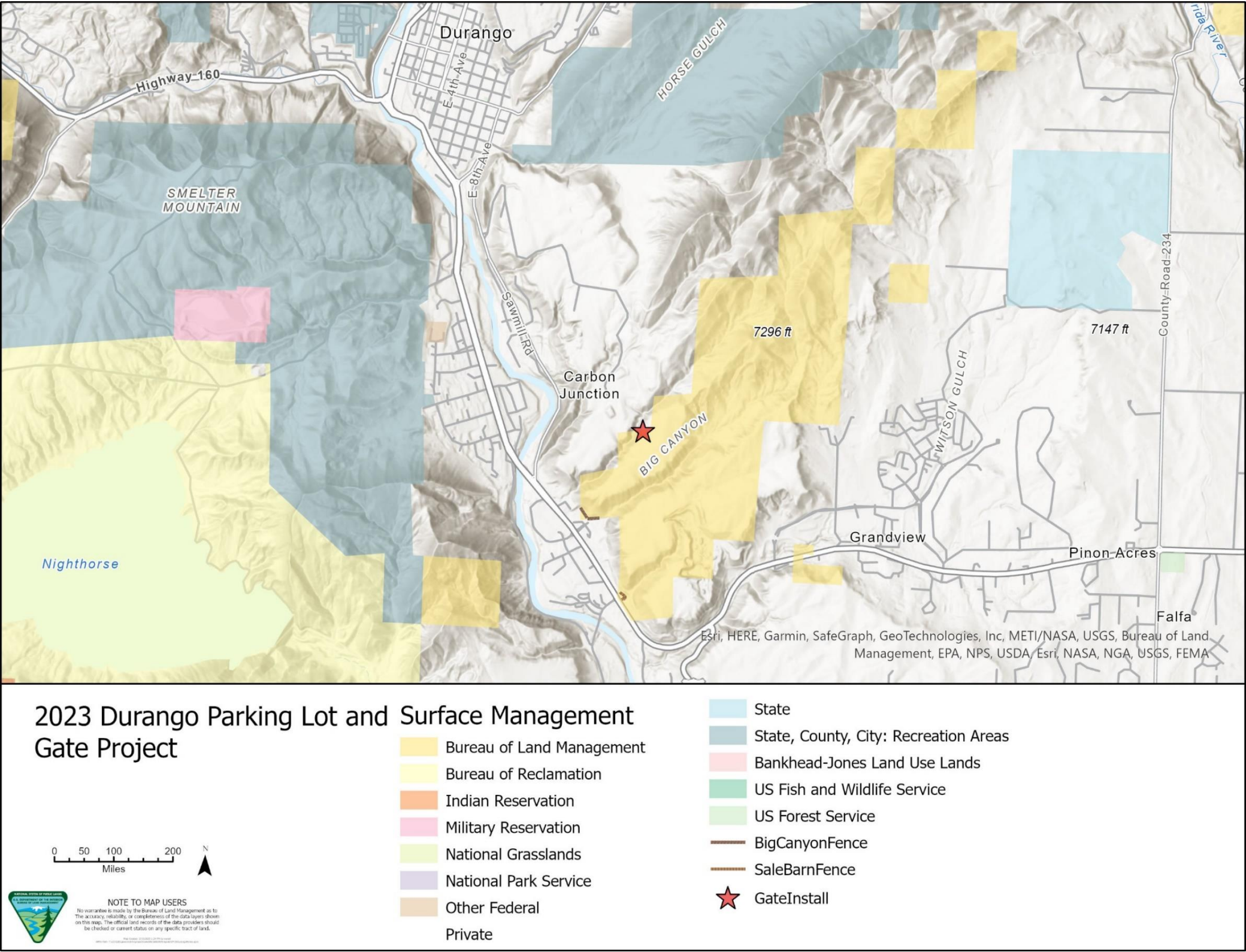
B.3 SAFETY PLAN

The Contractor shall prepare a Safety Plan that addresses the specific hazards of the work site and shall include working in areas of falling debris. The Contractor shall identify the specific conditions that she/he considers is a hazard. The Safety Plan shall also address the personal protective equipment and mitigating measures the Contractor will employ to increase safety on the worksite. Additionally, a plan of action for an emergency event shall be included in the Safety Plan. (See also C.2.13.1)PART II - CONTRACT CLAUSES

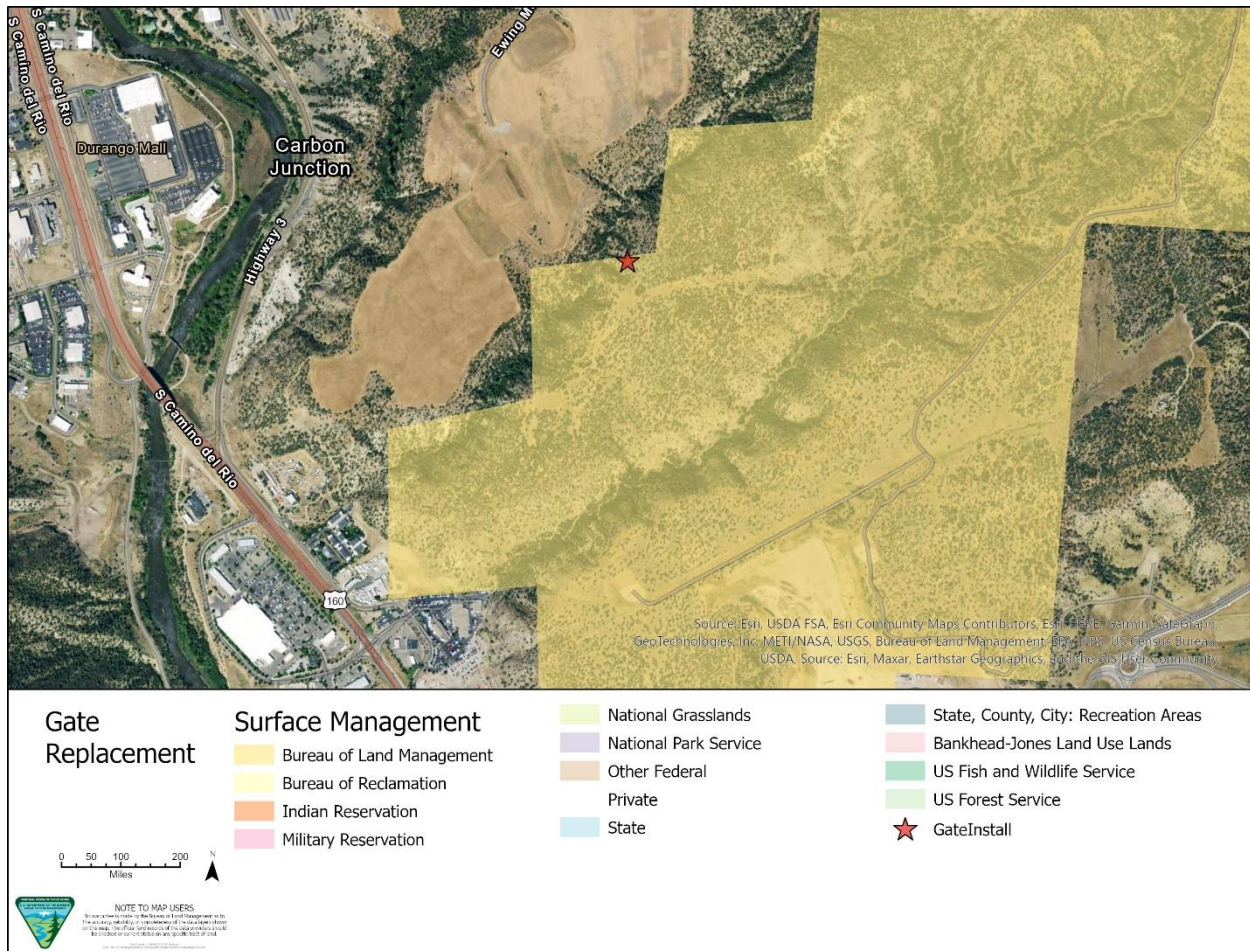
PART III - LIST OF DOCUMENTS, EXHIBITS AND OTHER ATTACHMENTS

SECTION C - LIST OF ATTACHMENTS

C.1 –Location Map



C.2 –Gate Replacement

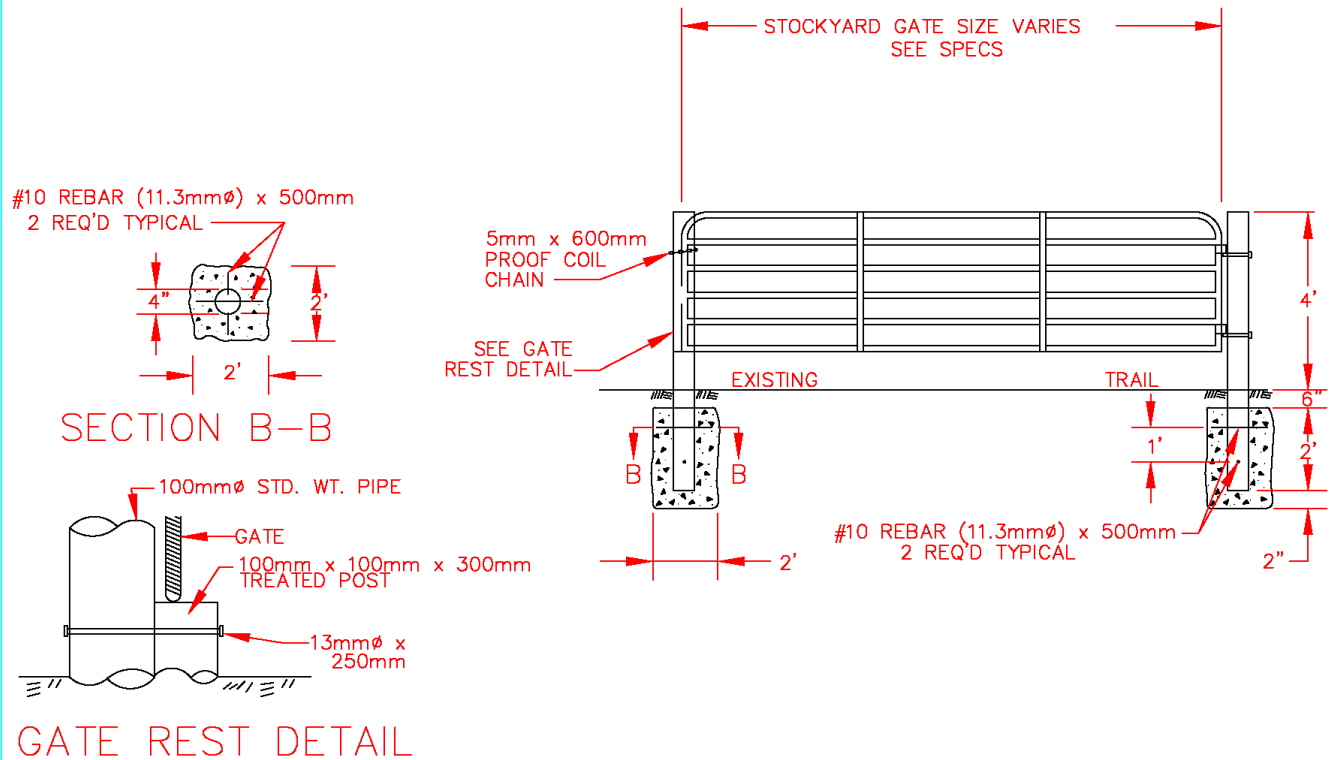
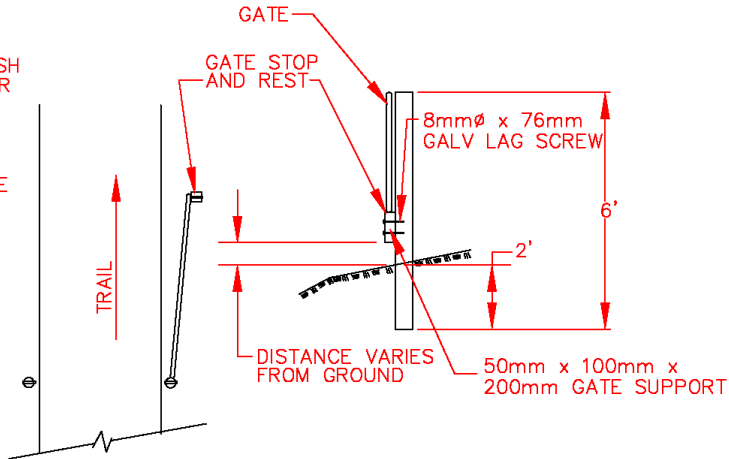


The proposed action will also replace the last remaining wood post gate with a metal gate. Examples of the gate to be removed and installed are below.



STOCKYARD GATE

1. THE GATE SHALL BE STOCKYARD TYPE OR ITS EQUIVALENT. THE GATE FRAME SHALL BE FABRICATED FROM 32mm HIGH STRENGTH STEEL TUBING (450MPa. MIN. YIELD STRENGTH) THE VERTICAL STAYS SHALL BE HIGH STRENGTH PRESS FORMED 76mm x 300mm GAUGE STEEL (OR EQUAL) ON BOTH FACES. FINISH ON THE GATE AND THE TWO GATE POSTS SHALL CONSIST OF AT LEAST ONE PRIMER COAT AND ONE COAT OF DARK GREEN SURFACE PAINT.
2. ALL BOLTS AND LAG SCREWS SHOWN INCLUDE WASHERS AND NUTS.
3. BARRICADE MARKER PANELS SHALL BE ALUMINUM OVERLAIN WITH "3 M" REFLECTIVE SHEETING WIDE ANGLE FLATTOP PRESSURE SENSITIVE, NO. 3280 IMPERIAL WHITE TRANSPARENT "STOP SIGN RED" CODE NO. 712 SHALL BE APPLIED BY SILK SCREEN PROCESSING, AIR BRUSHING OR SPRAYING TO PRODUCE STRIPING, EQUAL PRODUCTS AND PROCESSES MAY BE APPROVED.
4. THE METAL POSTS SHALL BE 6' IN HEIGHT, SCHEDULE 40 OR 80, 3" THICKNESS. FINISH ON THE POSTS SHALL BE THE SAME AS THE GATE..
5. CONCRETE SHALL CONFORM TO MINOR CONCRETE SPECS.
6. ALL STEEL MEMBERS EXCEPT LAG SCREWS, CHAIN, GATE, FRAME, REBAR, AND BOLTS SHALL BE A-36.



MATERIAL LIST FOR GATE		
ITEM	DESCRIPTION	QUANTITY
BOLT	13mm ϕ x 250mm – FOR GATE REST	1 EA.
BOLTS	8mm ϕ x 64mm – FOR SIGNS	12 EA.
CHAIN	5mm PROOF COIL CHAIN 600mm LONG	1 EA.
GATE	STOCKYARD TYPE	1 EA.
GATE POSTS	100mm ϕ STANDARD WEIGHT PIPE	2 EA.
REBARS	#10 REBAR (11.3mm ϕ) x 500mm long	4 EA.
METAL POST	6' HEIGHT, SCHED. 40 OR 80, 3" THICKNESS	3 EA.
TREATED POST	100mm x 100mm x 300mm TREATED POST	1 EA.
CONCRETE	FOOTINGS	0.6CU. Meter
LAG SCREW	10mm ϕ x 125mm LONG GALV.	2 EA.
LAG SCREW	8mm ϕ x 76mm LONG GALV.	2 EA.
FIR BLOCK	50mm x 100mm x 200mm GATE SUPPORT	1 EA.
STRAP IRON	64mm x 6mm x 500mm TYPE II SIGN	3 EA.
	MOUNTING BRACKET	



UNITED STATES DEPARTMENT OF THE INTERIOR
BUREAU OF LAND MANAGEMENT

PROJECT NO:	
DESIGN OFFICE:	
DESIGNED BY:	
DRAWN BY:	
CHK'D BY:	
APPROVED BY:	
DATE:	

SHEET 2 OF 2

Figure 1 - Gate Construction Diagram

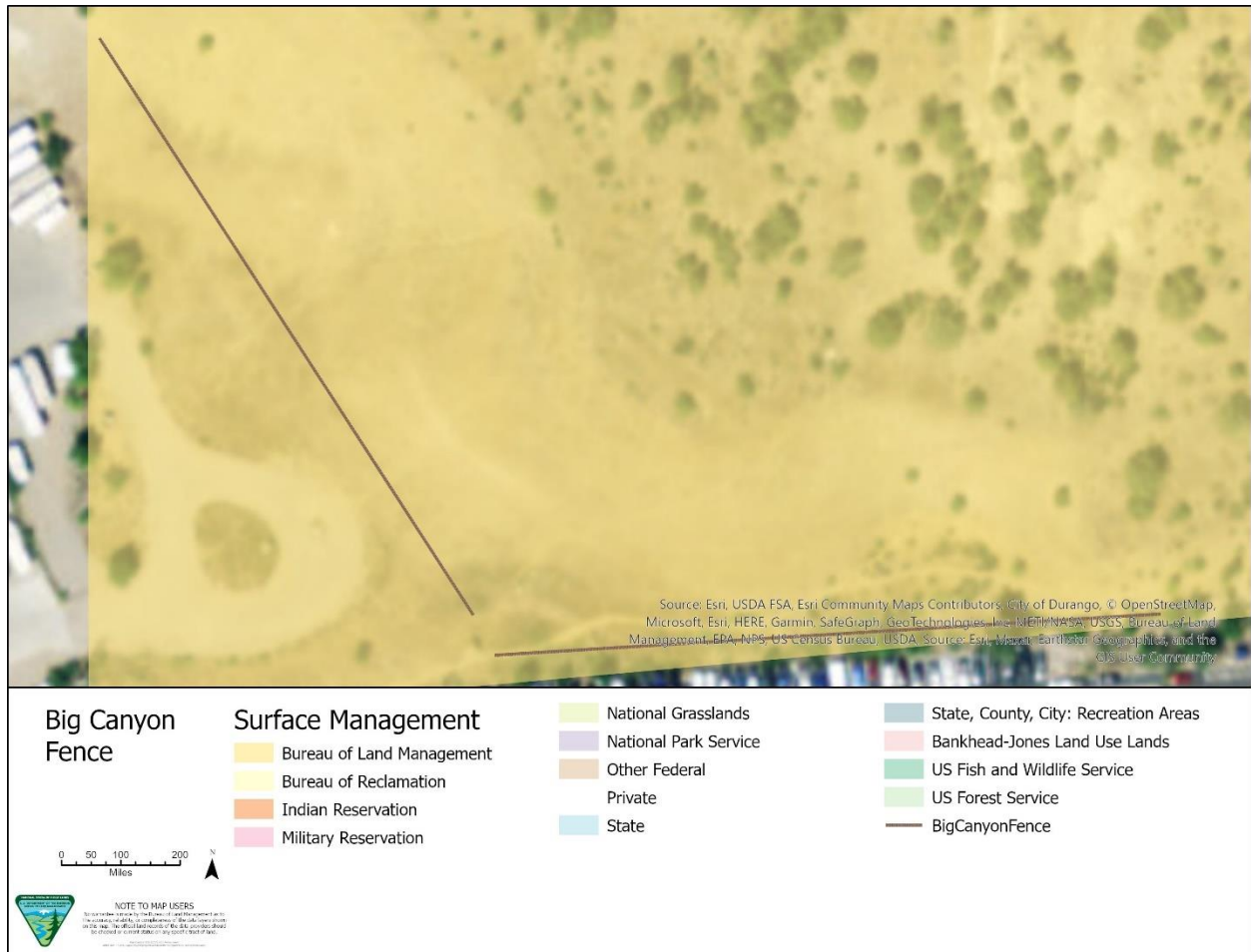
C.3 Sale Barn Fence Construction



All fences will be constructed as identified in the examples below C.5.

Approximately 480 feet of fencing at the Sale Barn Trailhead.

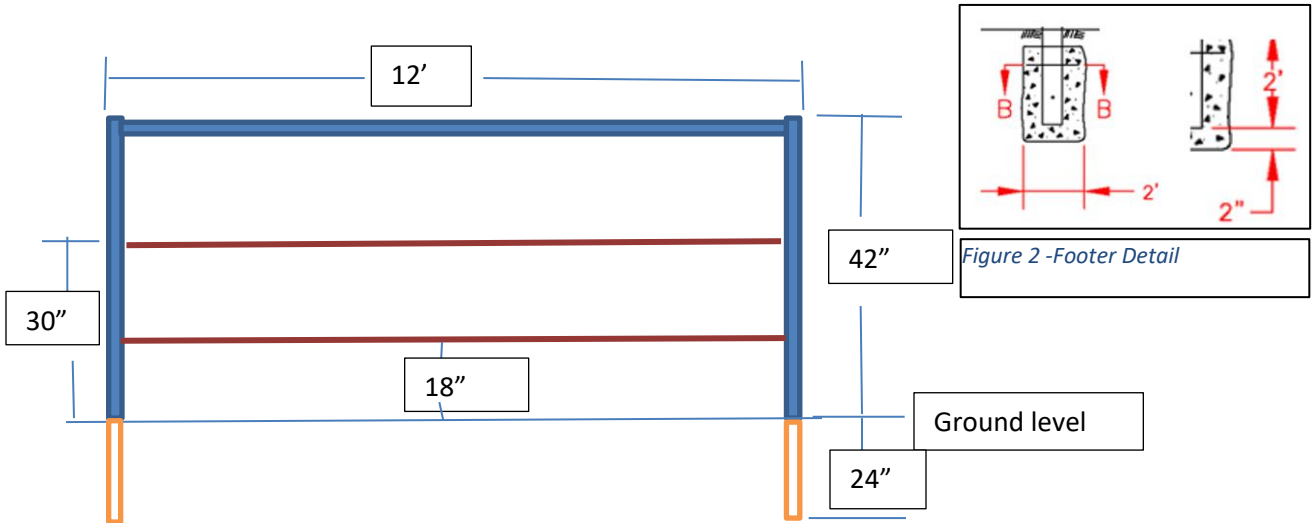
C.4 Big Canyon Fence



All fences will be constructed as identified in the examples below C.5.

Approximately 810 feet of fencing at Big Canyon Trailhead.

C.5 Fence Construction Diagram



Material List	Description
Vertical Posts	Schedule 40 or 80 - 3" thickness pipe – 66" tall post spacing 11 feet between posts.
Horizontal Top Bar	Schedule 40 or 80 - 3" thickness pipe
Horizontal cables	½" cable stretched tight so as not to sag, secure with cable clamps.
Concrete	Footings for vertical posts – see figure 2

