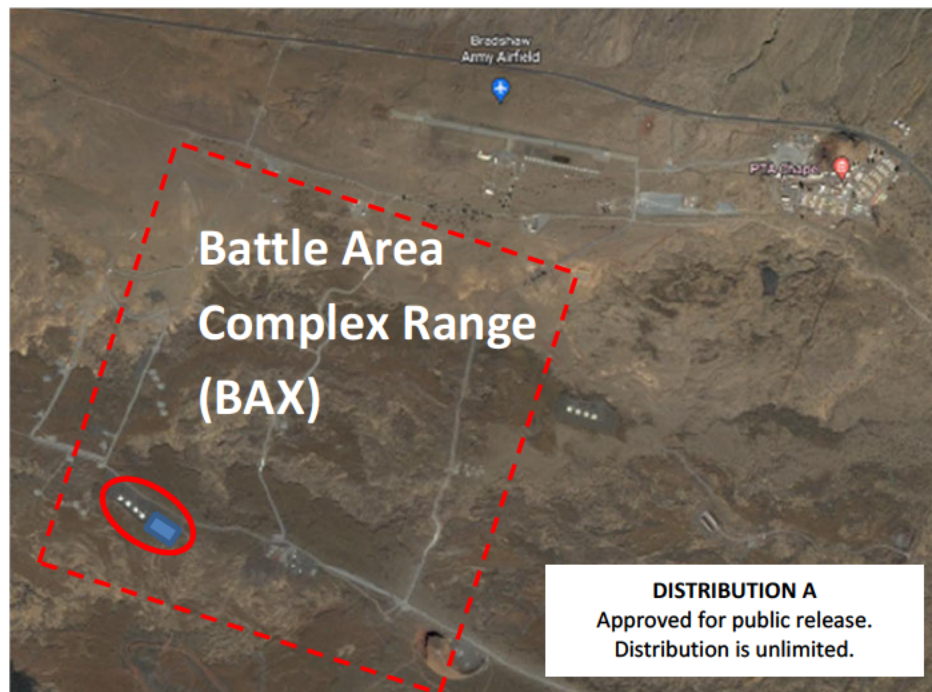
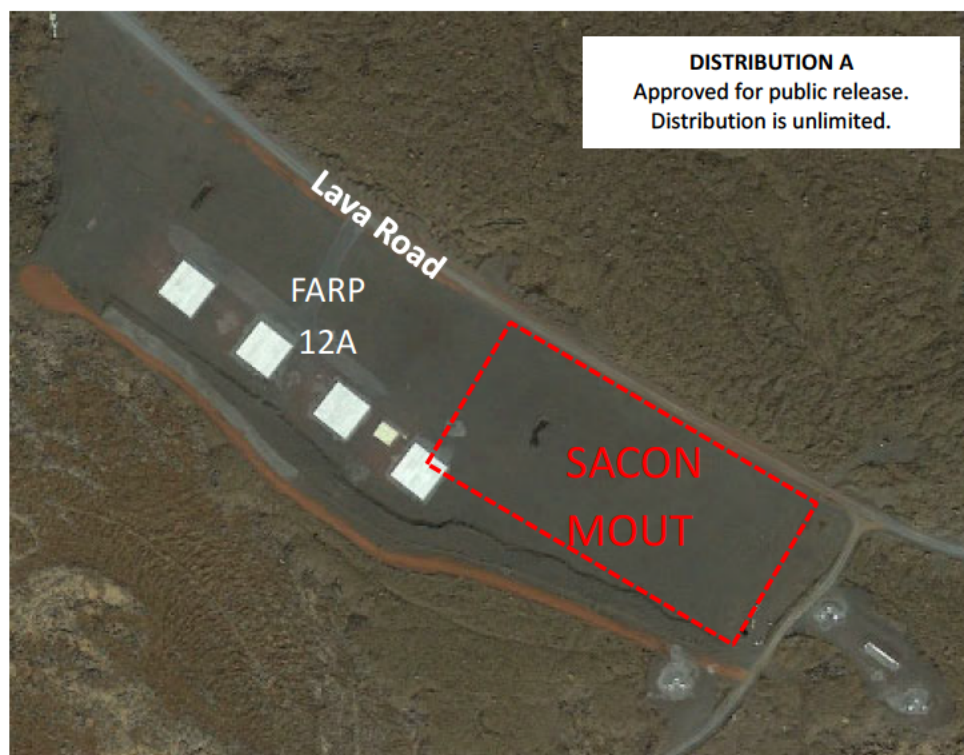


## Figures



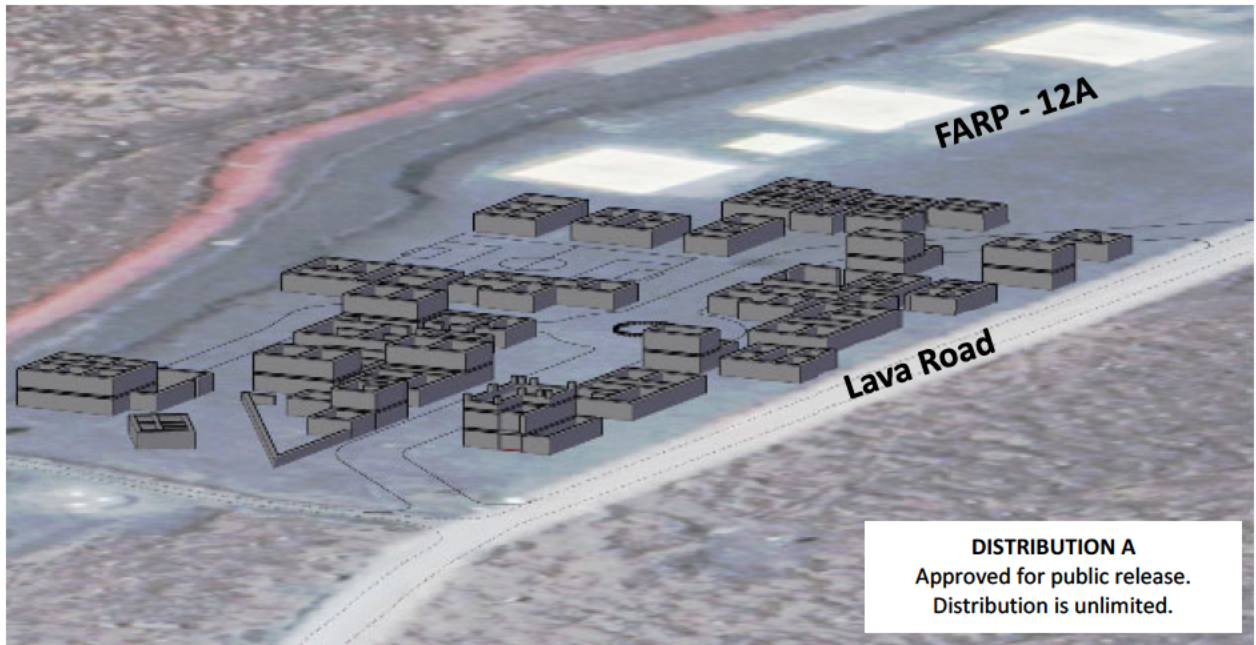
**Figure 1 (PTA MOUT Vicinity Map)**



**Figure 2 (Proposed PTA MOUT 300' x 500' Area)**



**Figure 3 (PTA Concept Site Plan)**



**Figure 4 (PTA Concept Site Plan 3D View)**



**Figure 5 (PTA Site)**



**Figure 6 (PTA Site)**



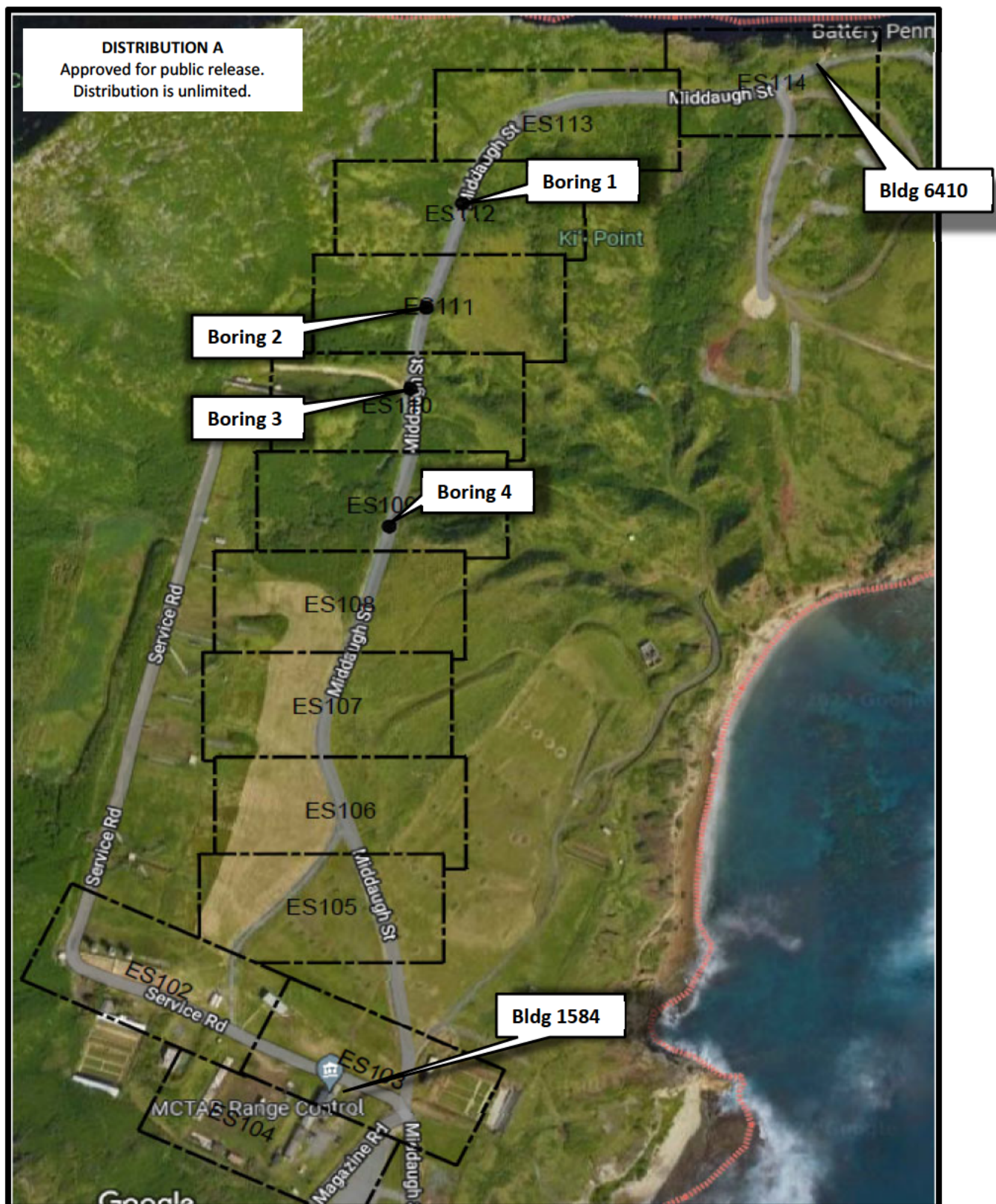
**Figure 7 (Typical SACON MOUT)**



**Figure 8 (Typical SACON MOUT)**

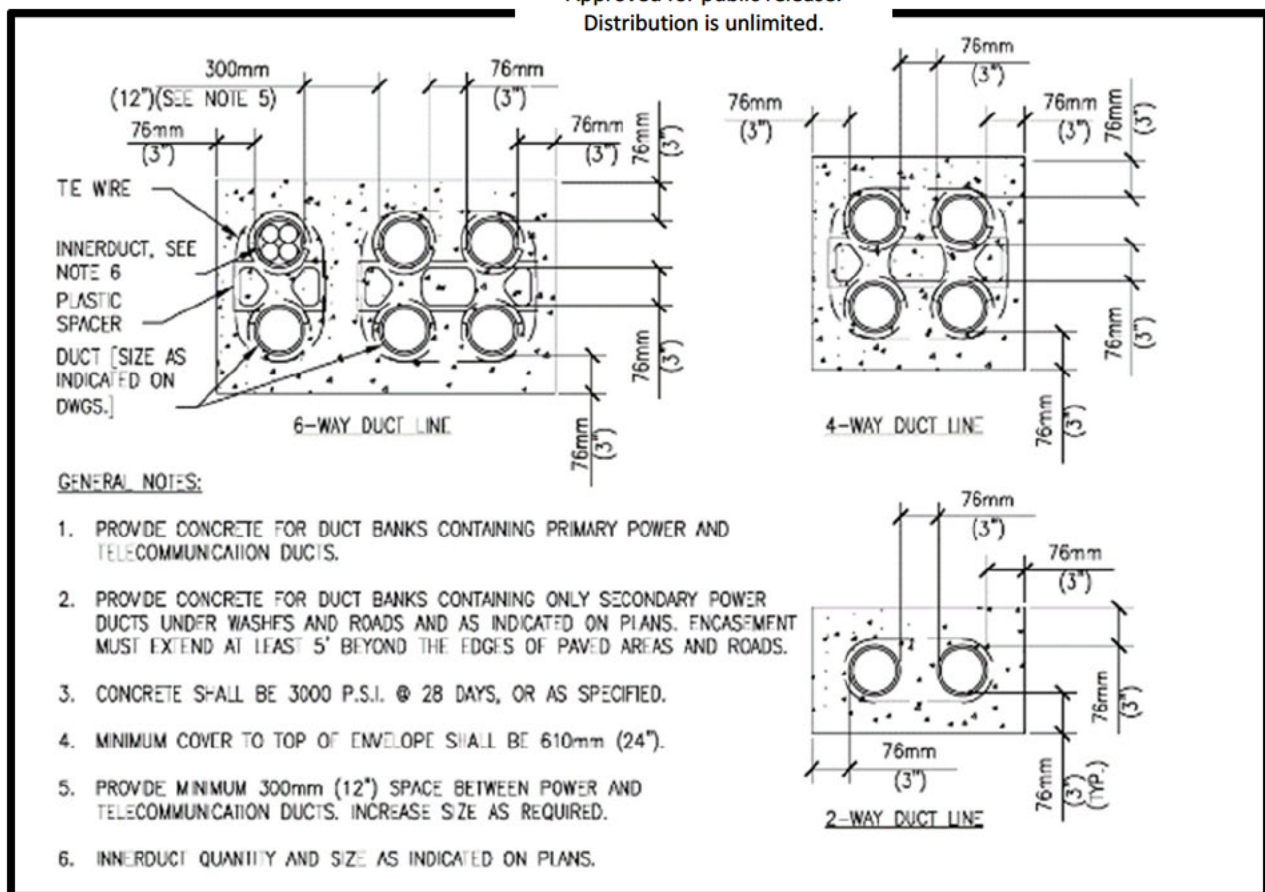


**Figure 9 (MCBH Kaneohe Bay Shore Power)**



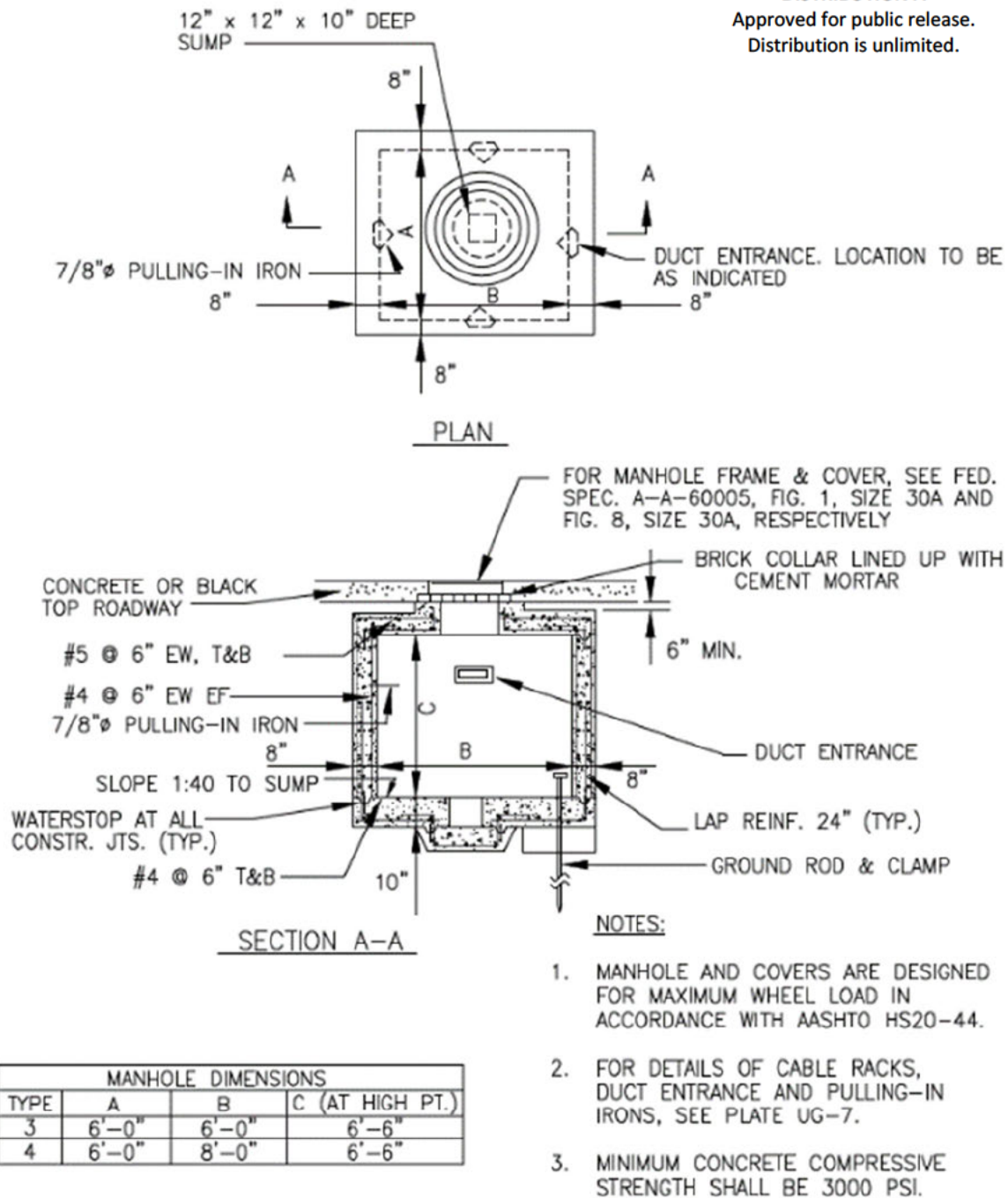
**Figure 10 (MCBH Soil Boring Locations)**

**DISTRIBUTION A**  
Approved for public release.  
Distribution is unlimited.



**Figure 11 (MCBH Trench Detail)**

DISTRIBUTION A  
Approved for public release.  
Distribution is unlimited.



STANDARD ELECTRICAL MANHOLE (TRAFFIC)  
TYPES 3 & 4

SKETCH DATE

JUNE 2002

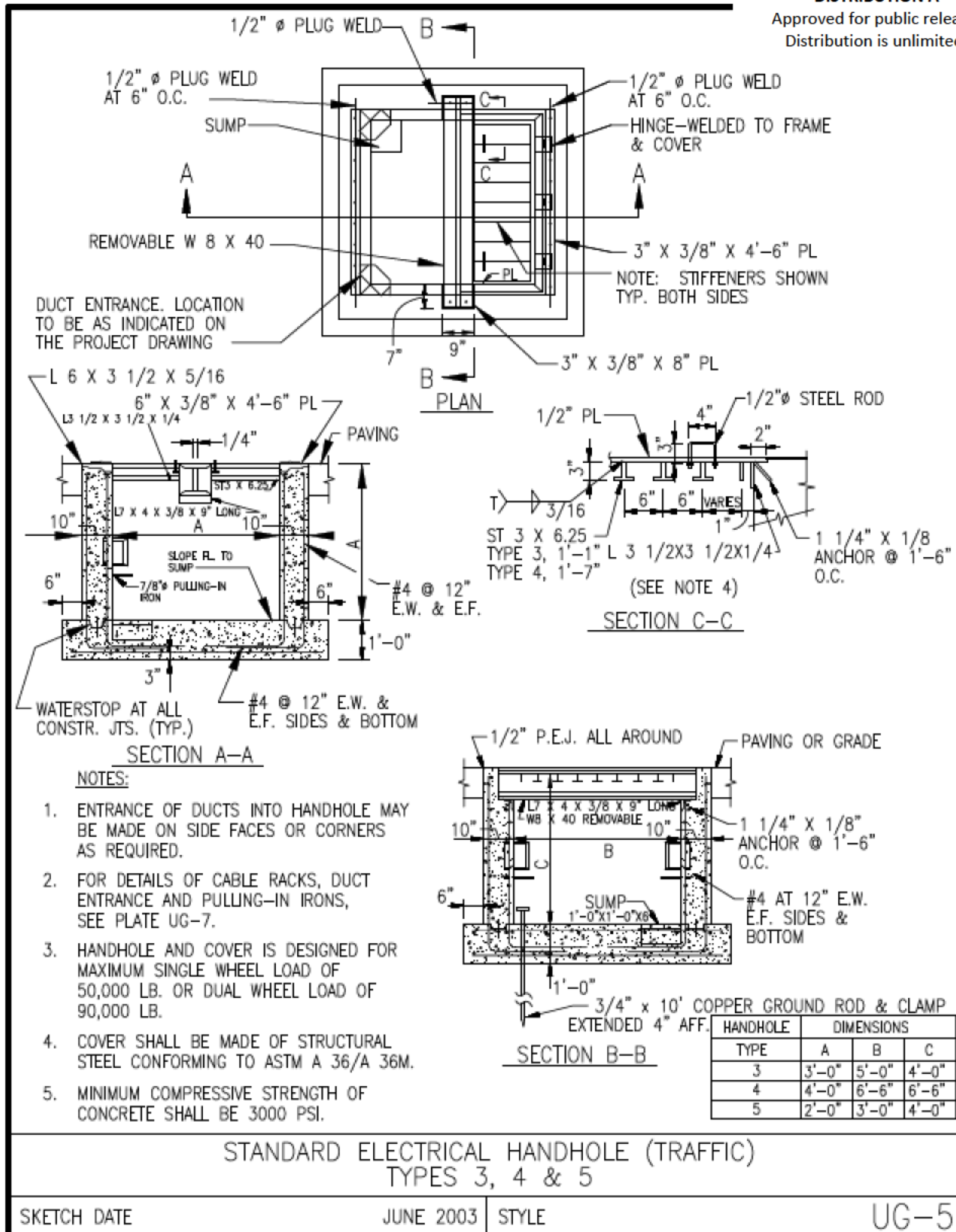
STYLE

UG-2

Figure 12 (MCBH Electrical Manhole Detail)

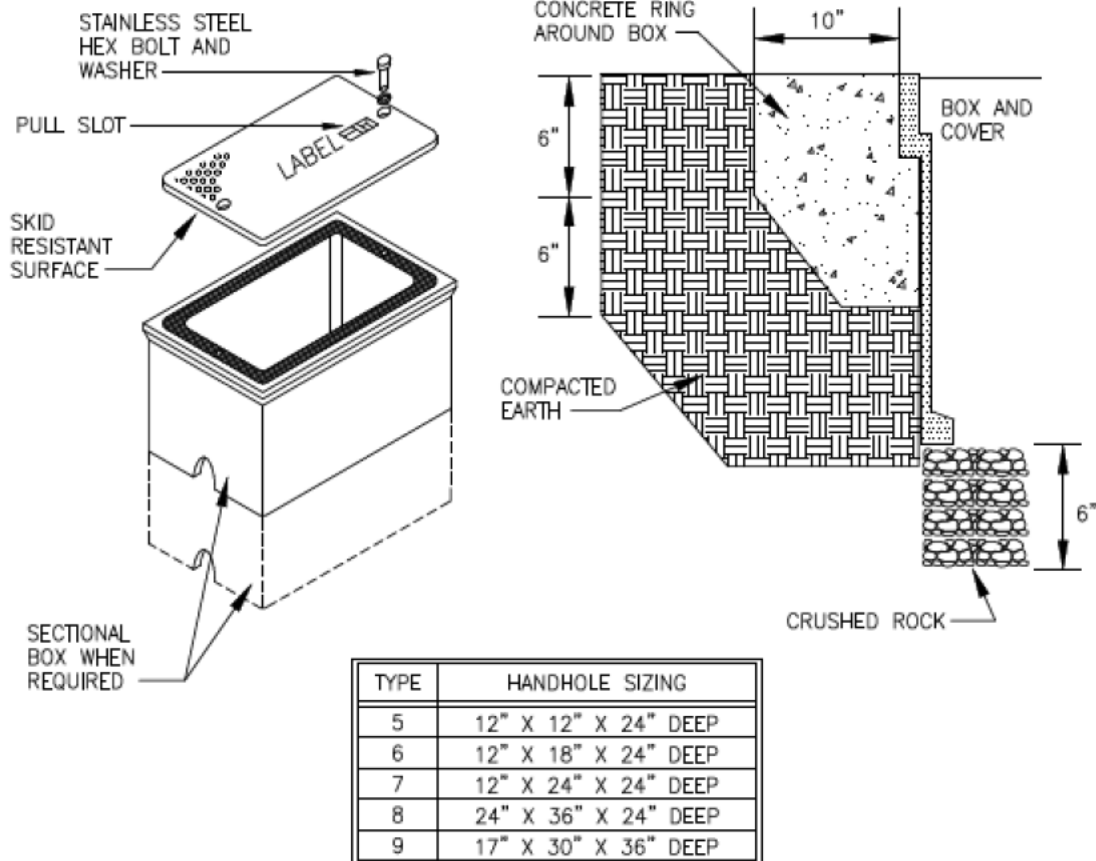
# **DISTRIBUTION A**

Approved for public release.  
Distribution is unlimited.



**Figure 13 (MCBH Electrical Handhole Detail)**

**DISTRIBUTION A**  
Approved for public release.  
Distribution is unlimited.



#### HANDHOLE REQUIREMENTS

1. HOUSING SHALL BE A POLYMER CONCRETE REINFORCED WITH A HEAVY WEAVE FIBERGLASS REINFORCING WITH COMPRESSIVE STRENGTH OF NO LESS THAN 10,000 PSI.
2. COVER AND BOX SHALL WITHSTAND A SERVICE LOAD OF NO LESS THAN 15,000 LBS OVER A 10" X 10" AREA.
3. PROVIDE STAINLESS STEEL BOLTS AND INSERTS.
4. PROVIDE WITH (2) 2 1/2" MOUSEHOLES.
5. PROVIDE LABEL "ELECTRICAL" FOR POWER HANDHOLES OR "TELEPHONE" FOR TELEPHONE HANDHOLES, OR AS INDICATED.

STANDARD ELECTRICAL HANDHOLE (NONTRAFFIC)  
(COMPOSITE/FIBERGLASS) TYPES 5, 6, 7, 8 & 9

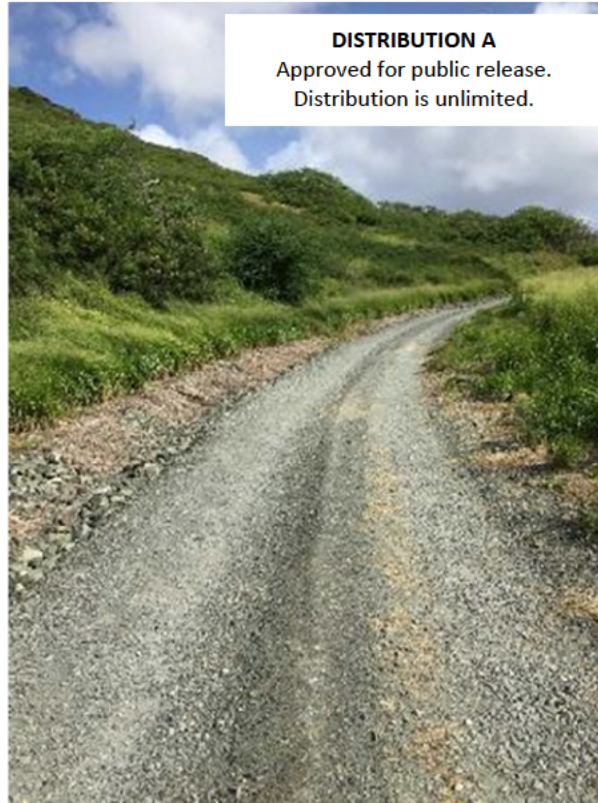
SKETCH DATE

JUNE 2002

STYLE

UG-6

**Figure 14 (MCBH Electrical Handhole Detail)**



**Figure 15 (MCBH Middaugh St)**



**Figure 16 (MCBH Middaugh St)**