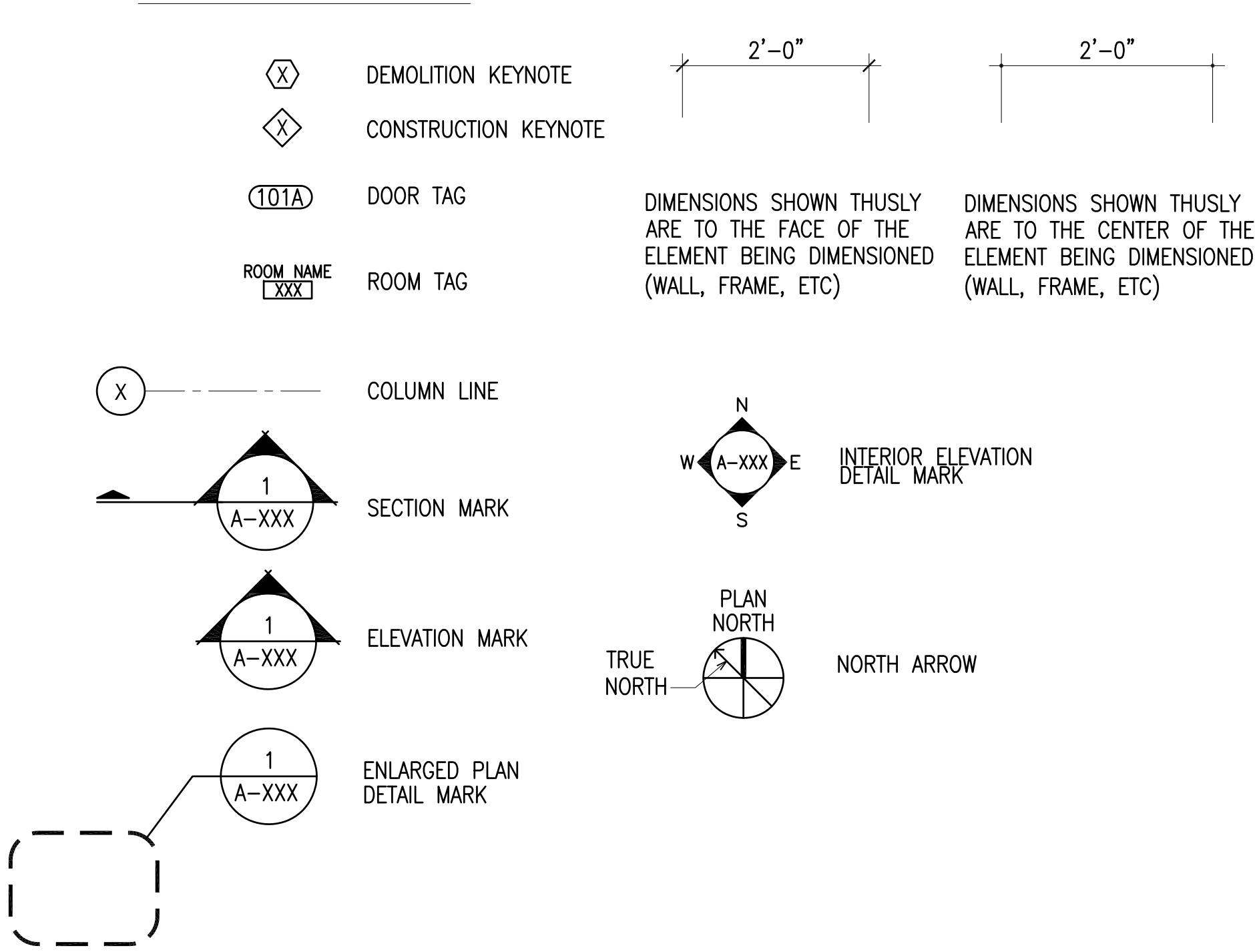


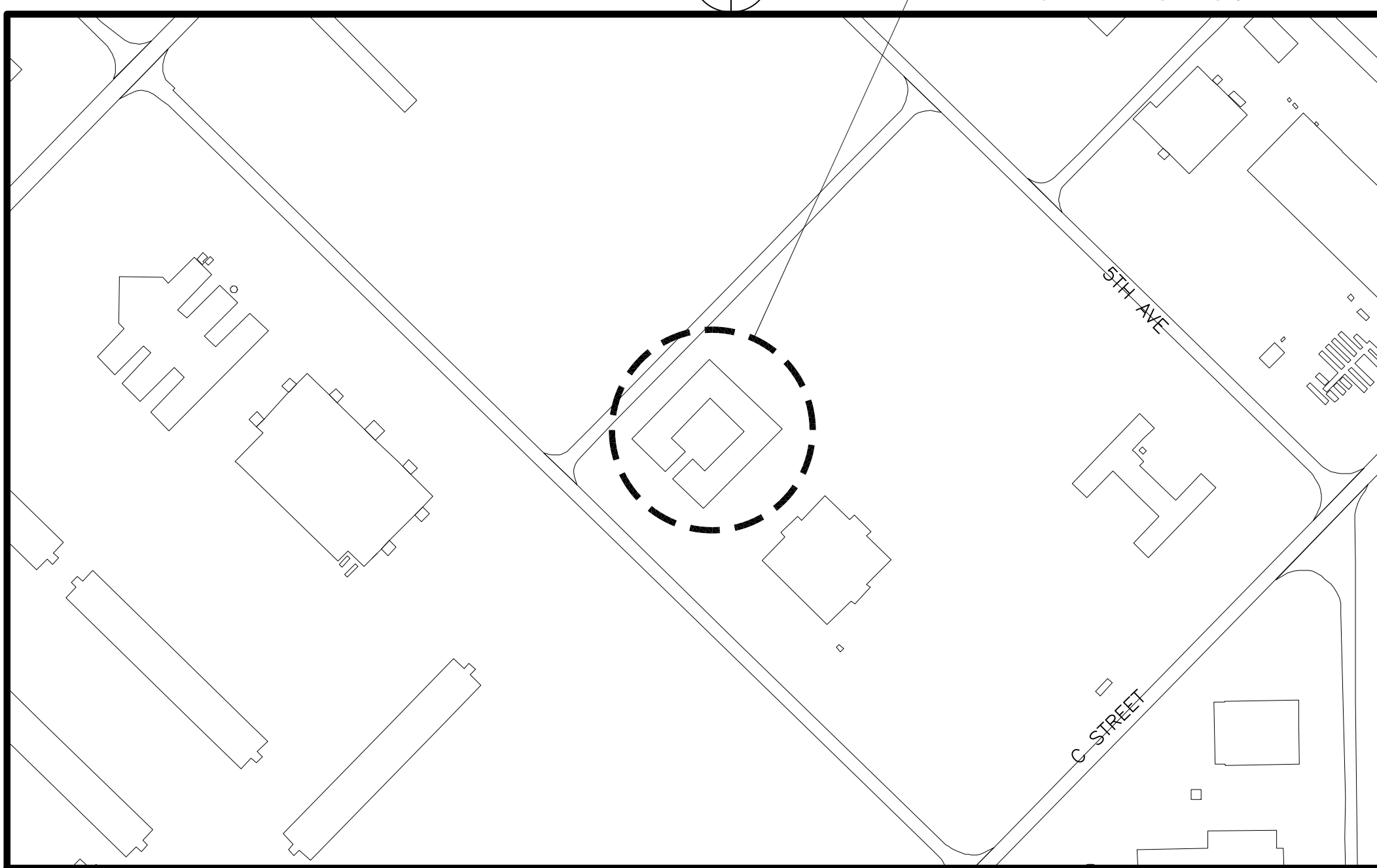
ABBREVIATIONS

A ANGLE (GEOMETRY) ANGLE (STEEL) AMP A/C ACT ACU ADH ADJ A/E AFF AG AGG AHU AL ALT ANOD APPD APPROX ARCH ASPH AUTO	B BIT BD B/L BLK BM B.M. BOT BP BRG BRIDG BRKT BS BTWN BVL	C C CAB CF CFM CG CIR CJ CL CLG CLR CMU CO COL CONC COND CONST CJ CONT CPT CTD CTR CTRD CU CU IN. CW CT	D DBL DEG DEPT DIA DIM DIV DN DR DS DWG	E EA EC EF EL ELEV ENGR ENT EOS EQ OR = EQUIP EW EXH EXIST EXP EJ EXT	F F TO F FA FAB FD FDN FE FEC FF FHC FIG FIN FLR FLUOR FM FOM FOS FRT FS FT FTG FUR FUT FW	G GA GALV GC GEN GFI INTERRUPT CL GND GR GWB GYP	H HB HC HDW HORZ HP HR HT OR H HW IN INCL INSUL INV I.B.O.	H-I HOSE BIBB HOLLOW CORE HARDWARE HORIZONTAL HIGH POINT HOUR HEIGHT/HIGH HOT WATER INCH INCLUDED INSULATION INVERT INSTALLED BY OWNER	K-L KIT LAM LAV LF LH LKR LVR	M MATL MAX MDP MECH MEZZ MFR MH MIR MISC ML MO MTD MTG MTL	N N N/A N/C N/L NO NOM NS NTS	O OA OC OD OFF OPNG OPP OVHD OF	P PART PFN PL PLMB PLYWD PNL PAR PRE-FAB PSF PSI PT PVC PVMT	R RCP RD RECP REINF REQD REV RHT RL RM RO RTU	R RISER REFLECTED CEILING PLAN ROOF DRAIN RECEIPTACLE REINFORCE REQUIRED REVISION RIGHT HAND RAIN LEADER ROOM ROUGH OPENING ROOF UNIT	S S SAN SFT SHIT SIM SL SM SPEC SQ SS SSTL ST STC STD STL STR STRUC SUSP SYM SYS	T T&B TEL TEMP TERR THRU THK TOC TOF TOJ TOP TOS TRANSF TRED OR T TYP	U UL UNF UON	V V VAV VCT VERT VEST VTR VOL VWC	W W WDTH W/ W/O WC WD WH WP WSCOT WT	W WEST WIDTH WITH WITHOUT WATER CLOSET WOOD WATER HEATER WATERPROOF(ING) WAINSCOT WEIGHT
--	---	--	--	--	--	--	--	--	---	---	--	--	--	---	--	---	--	------------------------------	--	---	---

SYMBOL LEGEND



CHERRY POINT AIR STATION MAP
NOT TO SCALE



VICINITY MAP
NOT TO SCALE

MINOR RENOVATION
MEN'S RESTROOM, B286
MARINE CORPS AIR STATION
CHERRY POINT, NORTH CAROLINA
PW WO.# 7241743

INDEX OF DRAWINGS

SHEET NUMBER	NAVFAC NUMBER	PLATE NUMBER	SHEET TITLE
1	12866929	G-001	COVER SHEET
2	12866930	A-101	DEMOLITION & CONSTRUCTION



FINAL

2 DEC 2022

APPROVED

ACTIVITY - SATISFACTORY 10

DATE 12/7/2022

APPROVED

FOR EFD FOR COMMANDER NAVFAC

DATE

A/E EFD

DESIGN HMP

DRAWN HMP

REVIEW LTC

QC

CHIEF ARCH/ ENGR

PROJECT MANAGER HMP

FIRE PROTECTION

BRANCH MANAGER LPF

DESIGN DIRECTOR LPF

DEPARTMENT OF THE NAVY

NAVAL FACILITIES ENGINEERING COMMAND

MARINE CORPS AIR STATION, CHERRY POINT, N.C.

MCAS CHERRY POINT

CHERRY POINT, NC

MINOR RENOVATION

MEN'S RESTROOM, B286

COVER SHEET

CODE ID. NO. 80081

SCALE: AS NOTED

FED. NO.

STA. PROJ. NO. 7241743

SPEC. NO.

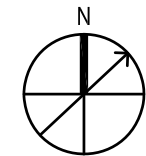
CONSTR. CONTR. NO.

NAVFAC DRAWING NO. 12866929

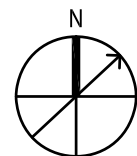
SHEET 1 OF 2

G-001

DRAWING REVISION: 07 AUG 2018



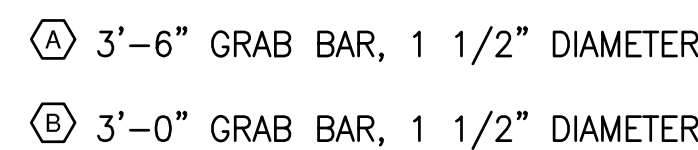
SCALE: 1/2"=1'-0"



SCALE: 1/2"=1'-0"



SCALE: $1/2 = 1' - 0'$



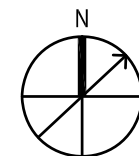
1. GRAB BARS, SECTION 604.5. THE EXACT HEIGHT OF GRAB BARS ARE TO BE COORDINATED WITH TOILET ACCESSORIES AND WATERCLOSET FLUSH VALVE HEIGHT
2. TOILET TISSUE DISPENSERS, SECTION 604.7
3. LAVATORIES AND SINKS, SECTION 606
4. INSULATE ALL EXPOSED LAVATORY WATER AND WASTE PIPING, SECTION 606.6
5. PAPER TOWEL DISPENSERS AND HAND DRYERS, SECTION 603.6, ANSI A117.1

SCALE: 1/2"=1'-0"

1. SEE SYMBOL LEGEND ON SHEET G-001.
2. ASBESTOS MATERIAL AND LEAD-BASED PAINT TESTING HAS BEEN PERFORMED ON EXISTING AREAS OF WORK. SEE THE SPECIFICATION FOR ASBESTOS MATERIAL AND LEAD-BASED PAINT REPORT RESULTS. CONTRACTOR SHALL BE RESPONSIBLE FOR THE APPROPRIATE STANDARD OF CARE REGARDING THE HANDLING OF ANY MATERIALS FOUND TO BE HAZARDOUS AND THE PROTECTION OF PERSONS FROM EXPOSURE
3. WHERE PIPES, CONDUITS, DUCTS, OR OTHER UTILITIES ARE REMOVED AND NOT REPLACED, PROVIDE MATERIALS TO FILL THE OPENINGS(S) WHICH ARE THE SAME AS ADJACENT CONSTRUCTION.
4. EXISTING INTERIOR WALLS ARE PAINTED CONCRETE MASONRY UNLESS NOTED OTHERWISE.
5. CLEAN AND PREPARE ALL EXISTING PREVIOUSLY PAINTED INTERIOR SURFACES, WITHIN THE LIMITS OF CONSTRUCTION, FOR NEW PAINT FINISHES.
6. ALL MATERIALS ARE TO BE CONSIDERED NEW UNLESS SPECIFICALLY REFERRED TO AS "EXISTING".
7. DIMENSIONS ORIGINATE FROM THE FACE OF CONCRETE MASONRY OR THE FACE OF THE TOILET PARTITION UNLESS OTHERWISE NOTED.

- ① REMOVE EXISTING URINAL. CAP PIPING AND SEAL WALL WITH A STAINLESS STEEL PLATE
- ② REMOVE EXISTING WALL MOUNTED LAVATORY AND MIRROR. PREPARE PIPING FOR INSTALLATION OF ACCESSIBLE LAVATORY. PREPARE CONCRETE MASONRY WALL FOR INSTALLATION OF NEW MIRROR
- ③ REMOVE EXISTING TOILET PARTITIONS – PATCH REMAINING HOLES IN THE CONCRETE MASONRY WALL
- ④ REMOVE EXISTING URINAL SCREEN – PATCH REMAINING HOLES IN THE CONCRETE MASONRY WALL
- ⑤ REMOVE EXISTING WALL-MOUNTED MIRROR
- ⑥ CLEAN AND PREPARE EXISTING CONCRETE MASONRY WALLS FOR NEW PAINT FINISH

- 1 TOILET PARTITION
- 2 ACCESSIBLE WALL-MOUNTED LAVATORY
- 3 TOILET TISSUE DISPENSER
- 4 GRAB BAR - SEE DETAIL A3/A-101
- 5 PAINT WALLS IN ROOM - WIDTHS INDICATED IN PLAN BY
±8'-0" HIGH - COLOR TO MATCH EXISTING
- 6 WALL MOUNTED MIRROR



SCALE: NTS

$$1/2'' = 1' - 0''$$

DESIGNED & ENGINEERED BY:
FACILITIES ENGINEERING

The seal of the United States Marine Corps is a circular emblem. It features a red outer ring with the words "DEPARTMENT OF THE NAVY" at the top and "UNITED STATES MARINE CORPS" at the bottom, separated by small stars. The center of the seal is a white globe with a red eagle with spread wings perched on top. A red anchor is positioned behind the globe. The entire seal is encircled by a thick, gold-colored rope-like border.

AL

ACTIVITY - SATISFACTORY TO

ATE

APPROVED

OR EFD FOR COMMANDER NAVFAC

ATE

A/E	EFD
DESIGN	HMP
DRAWN	HMP
REVIEW	LTC
QC	
CHIEF	ARCH./ ENGR.
PROJECT MANAGER	HMP
FIRE PROTECTION	
BRANCH MANAGER	LPF
DESIGN DIRECTOR	LPF

MARINE CORPS AIR STATION, CHERRY POINT, N.C.

MARINE CORPS AIR STATION, CHERRY POINT, N.C.

POINT MINOR RENOVATION
MEN'S RESTROOM, B286

<p>RINE</p>	<p>FLOO</p>
--------------------	--------------------

CODE ID. NO. 80091	SIZE	D
SCALE: AS NOTED		
ED NO.		
TA. PROJ. NO.	7241743	
PEC. NO.		
ONSTR. CONTR. NO.		
AVFAC DRAWING NO.		
12866930		
SHEET	2	OF 2
A-101		