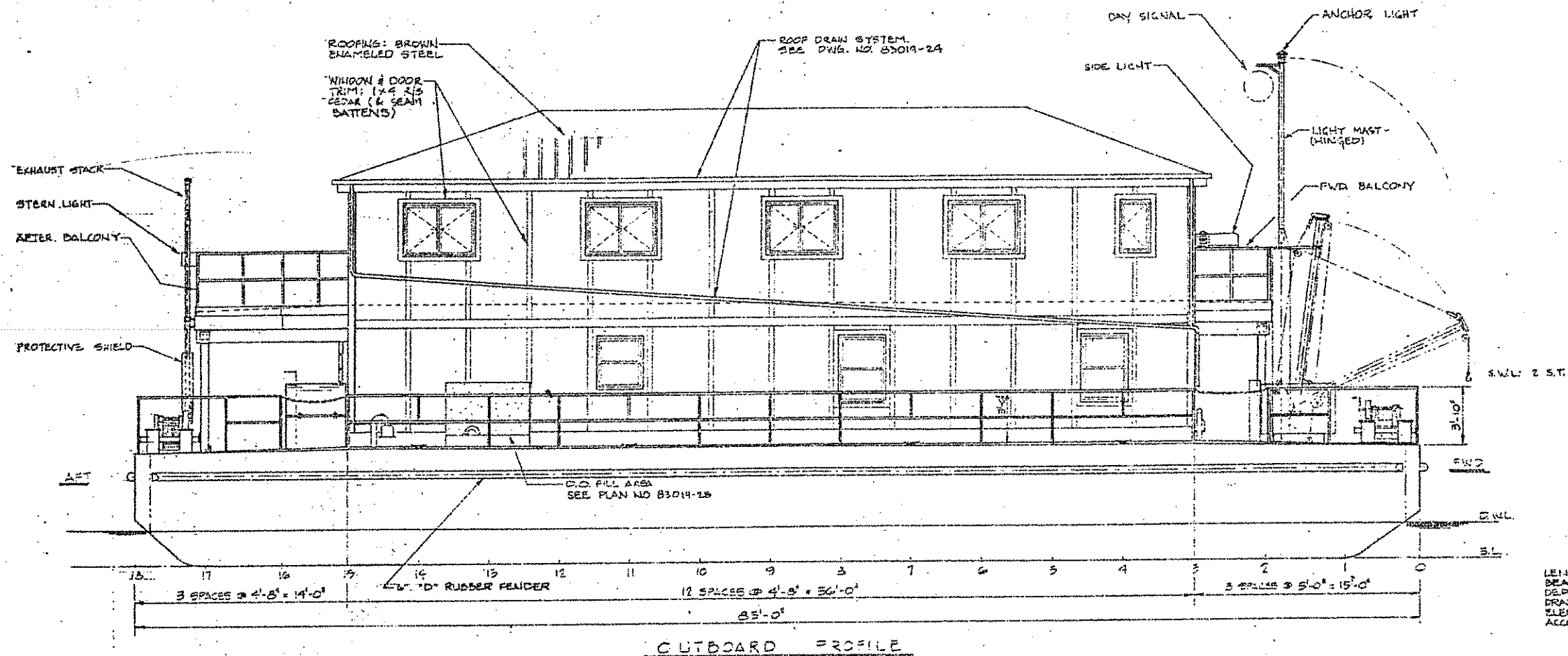


Scanned 1/6/19



PARTICULARS	
LENGTH	35 FT.
BEAM	13 FT. 6 IN.
DEPTH (P.S.)	7 FT. 6 IN.
DRAFT (DESIGN)	2 FT. 6 IN.
ELECTRIC POWER: 2 DG. @ 20 KW. EA.	40 KW.
ACCOMMODATIONS:	
COOK'S QUARTERS	1
B BUNK ROOMS 1/2 EACH	16
TOTAL	17

PLAN LIST				
TITLE	NO.	REV.	TITLE	NO. REV.
Outboard Profile, Plan List & Notes	83019-1	A	Potable Water System - Diagrammatic Arrangement	83019-25 A
Main and Upper Deck Arrangement & Equipment List	83019-2	A	S.W. Flushing System - Diagrammatic Arrangement	83019-26 A
Hold Arrangement & Views from Ahead & Astern	83019-3		Bilge System - Diagrammatic Arrangement	83019-27
Inboard Profile & Port Side Outboard Profile	83019-4		F.O. System - Diagrammatic Arrangement	83019-28 A
Revision Record	83019-5		Sewage Treatment System - Diagrammatic Arrangement	83019-29 A
Midship Section	83019-6		Fire & Safety Equipment - Arrangement & List of Material	83019-30 A
Bow Rake Structure	83019-7		Electrical - One Line Diagram & Load Analysis	83019-31 A
Stern Rake Structure	83019-8		Electrical Equipment List & 12 VDC Schematic	83019-32 A
Structural Profiles and Details	83019-9		Electrical Lighting Arrangement & Material List	83019-33 A
F.O. Tank, Foundation & Details	83019-10		Barrack Floor Plan	83019-34
F.W. Tank, Foundation & Details	83019-11		Barrack Construction Sheet 1 of 3	83019-35 A
Diesel Generator Foundation & Installation	83019-12		Barrack Construction - Sheet 2 of 3	83019-36
Deck Winches & Bitts Foundations	83019-13		Barrack Construction - Sheet 3 of 3	83019-37
M.S.D. Foundation & S.W. (FLUSH) & Rainwater Tanks	83019-14		Barrack Door & Window Details	83019-38
2 Ton Mast, Boom & Hoist - Arrangement	83019-15		Barrack Outside Decks Layout & Details	83019-39 A
2 Ton Mast, Boom & Hoist - Details	83019-16	A	Plumbing Arrangement and List of Fixtures & Accessories	83019-40
Vertical Ladders & Handrails	83019-17	A	Laundry, Mid Room, & Workshop - Arrangements	83019-41
Hold Ventilation - Arrangement & Details	83019-18		Kitchen & Pantry - Arrangement & Details	83019-42 A
Hatches & Soft Patches - Details	83019-19		Insulation, Floor Covering and Wall Finish Schedules	83019-43 A
Inclined Ladders & Walkways, Hull Anodes & Sea Conns.	83019-20		Furniture Lay-out and List	83019-44 A
Boarding Platform - Arrangement & Details	83019-21			
Portable Float Dock - Arrangement Details	83019-22			
Gasoline Tank & Handling System - Arrangement & Details	83019-23	A		
Rain Water Collecting System - Diagrammatic Arrangement	83019-24	A		

- NOTES
- The design shown on these plans was developed from the United States Department of Agriculture - Forest Service Specifications R10-B3-36.
 - The design is based on the United States Coast Guard Rules and Regulations for Uninspected Vessels, 46CFR, as applied to an unmanned barge.
 - The requirements of the United States Public Health Service Handbook on Sanitation of Vessel Construction have been incorporated into the design.
 - The design of the barracks house also incorporates, insofar as practical, the standards of the Universal Building Code and the National Electric Code.
 - The design of the hull and hull equipments, insofar as practical, incorporates the requirements of the applicable United States Coast Guard Regulations 33CFR and 46CFR such as Pollution, Electrical Engineering, and Marine Engineering.
 - The hull structural design is based on the American Bureau of Shipping Rules for Building and Classing Steel Vessels for Service on the Rivers and Intra-coastal Waterways (1960).
 - The bottom structure is designed for the vessel to be beached on a gradually sloping mud, sand, or gravel bottom with variations in height of less than 6 inches.
 - The compartmentation of the hull is located to provide the vessel with a one compartment standard of subdivision.
 - The vessel will not be inspected by the United States Coast Guard, nor will it be assigned a load line, nor will it be classed by the American Bureau of Shipping.
 - The hull structure is to be fabricated from mild steel such as ASTM A36 or ABS Ordinary Strength Hull Steel.
 - All welding is to be in accordance with the ABS Rules.

U.S. DEPARTMENT OF AGRICULTURE
FOREST SERVICE
TONGASS NATIONAL FOREST - CHATHAM AREA
SITKA, ALASKA

Designed for: OREGON MARINE CONSTRUCTION, INC.
PORT INDUSTRIAL PARK
REDSPOUT, OREGON 97487

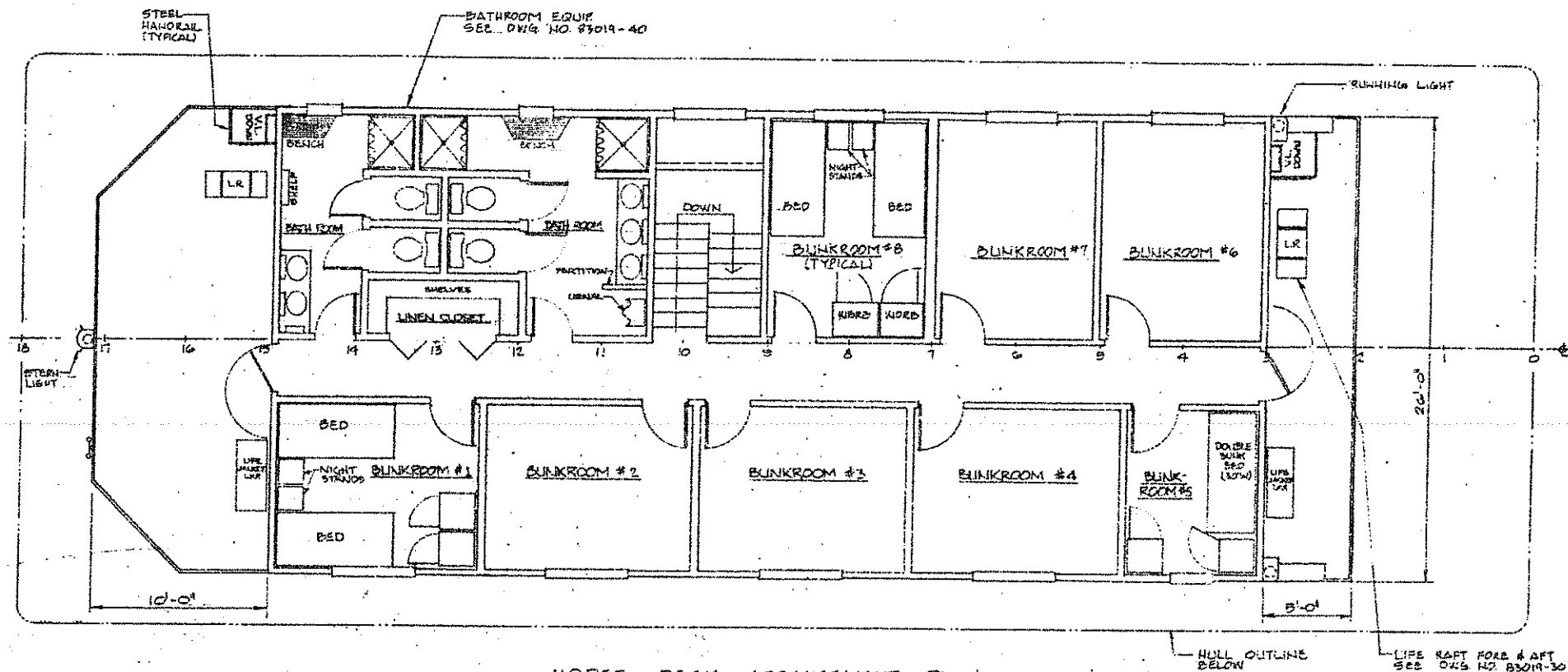
Designed by: J. CAMERON MCKERNAN
ENGINEER + NAVAL ARCHITECT
1230 S. E. 7TH AVENUE, PORTLAND, OREGON 97214
PHONE (503) 232-7211

DRAWN BY: JMK (D.E.) APPROVED BY: [Signature]
CHECKED BY: [Signature] FILE NO. P83-19
SCALE: 1/2" = 1'-0" DATE: 10-7-83

FLOATING FIELD CAMP
186' x 31'-6" x 27'-6" STEEL BARGE
OUTBOARD PROFILE,
PLAN LIST & NOTES

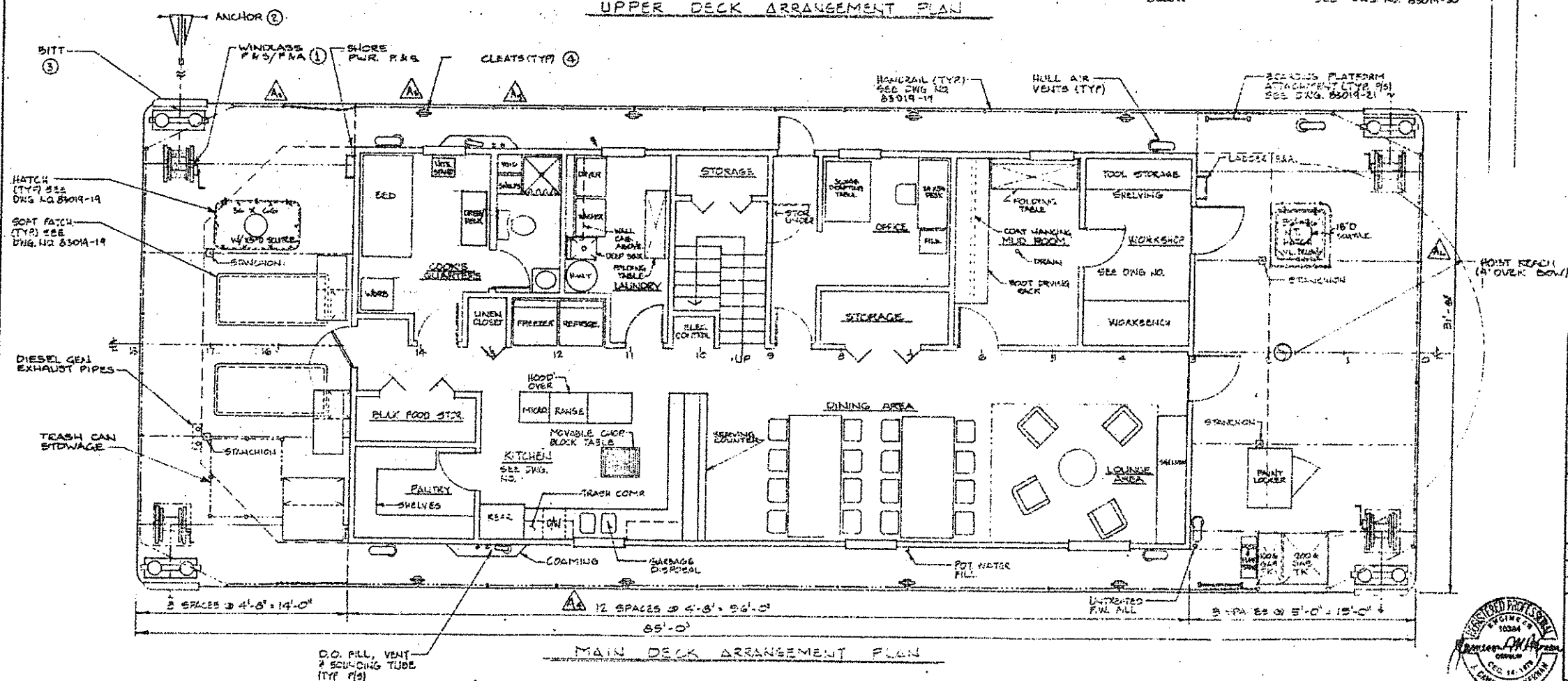
PLAN NO. 83019-1 REV. A





UPPER DECK ARRANGEMENT PLAN

EQUIPMENT LIST				
MK	ITEM	QTY	DESCRIPTION	REMARKS
①	WINDLASS	4	HAND POWERED - 2 SPEED 30 ST. FULL - BERGE EQUIP. MODEL EN-10	
②	ANCHOR	6	250 LB. 24,000 LB. NOMINAL HOLDING - DANFORTH OR EQUAL	2 FOR STEER. WANCHES - 3 SHARPES STORED IN BOW RACK
③	BITTS	4	12" DOUBLE BARKEL - STEEL	1/4" CROSS ARM
④	CLEAT	6	12" STEEL WELD ON - WASH CHAIN RING 110 OR EQUAL	



MAIN DECK ARRANGEMENT PLAN

U.S. DEPARTMENT OF AGRICULTURE
FOREST SERVICE
TONGASS NATIONAL FOREST - CHATHAM AREA
SITKA, ALASKA

Designed for Builder:
OREGON MARINE CONSTRUCTION, INC.
PORT INDUSTRIAL PARK
REEDSPORT, OREGON 97467

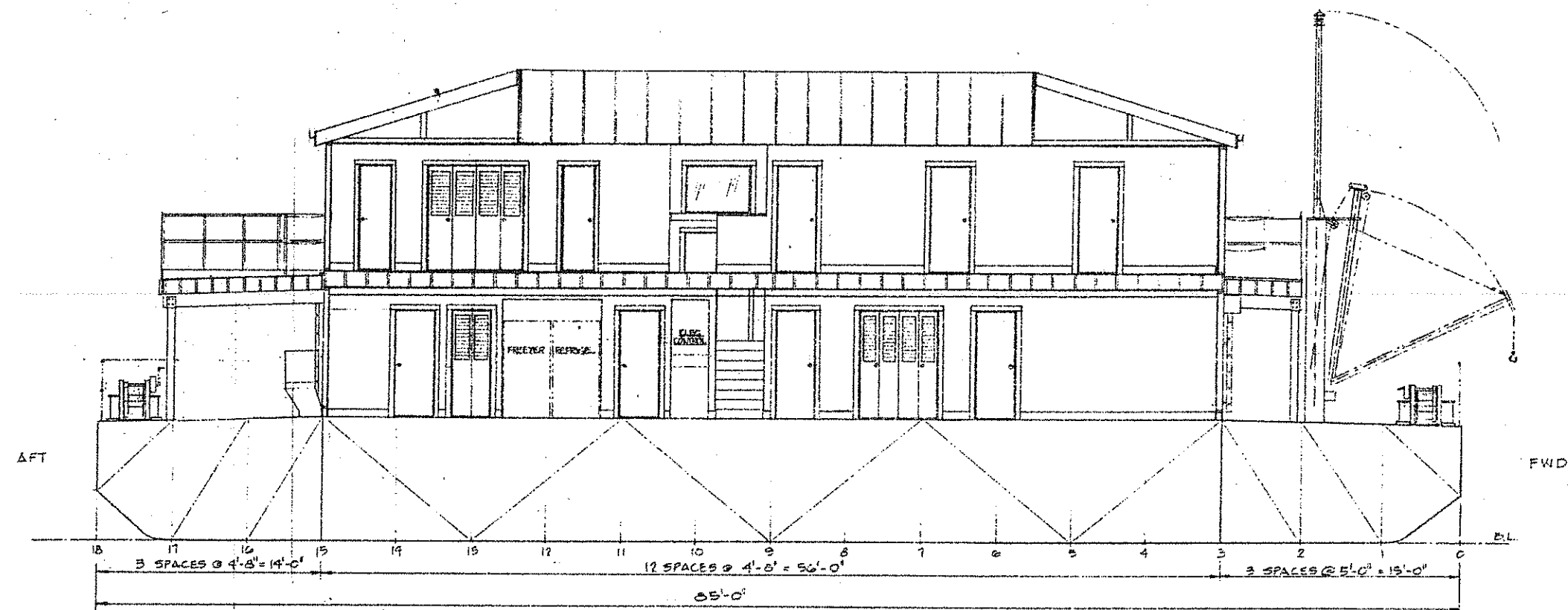
Designed by:
J. CAMERON MCKERNAN
ENGINEER + NAVAL ARCHITECT
1230 S. E. 7th AVENUE, PORTLAND, OREGON 97214
PHONE: (503) 232-7311

DRAWN BY: JMC (J.C.) APPROVED BY:
CHECKED BY: FILE NO. FBS-12
SCALE: 1/4" = 1'-0" DATE: 10-7-85

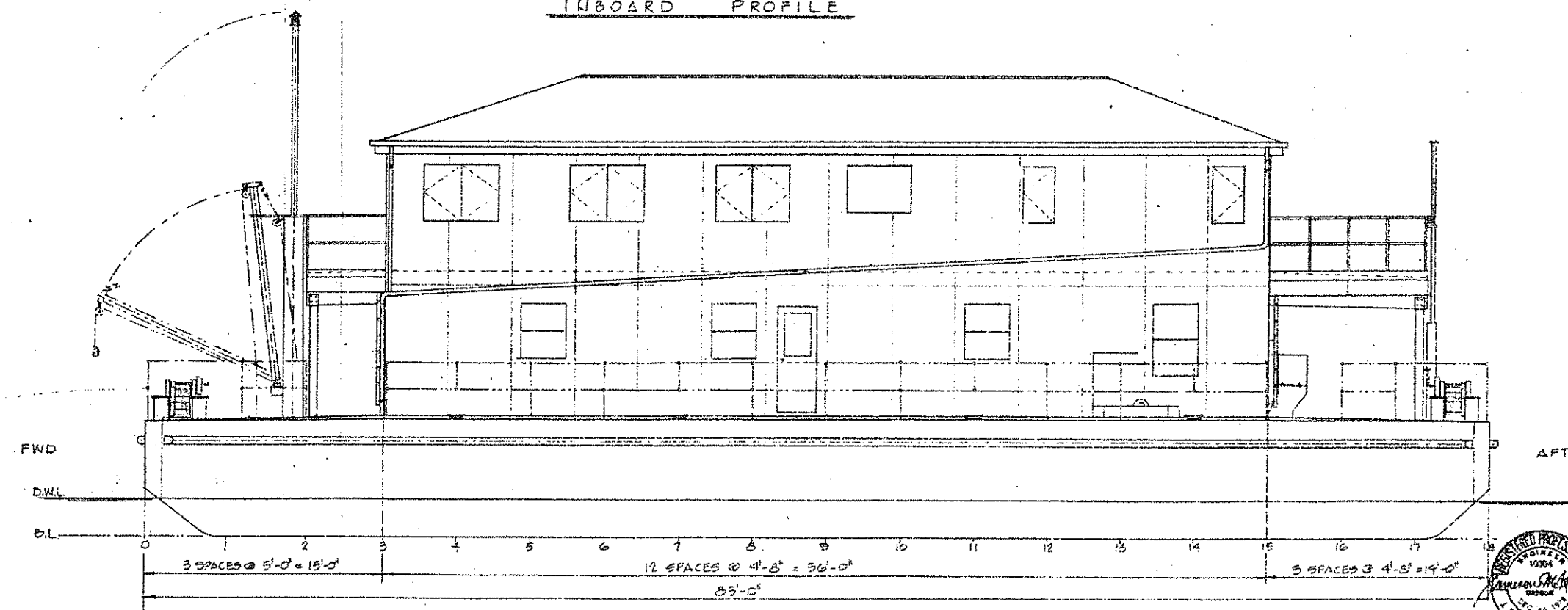
FLOATING FIELD CAMP
18' x 31' x 47' STEEL BARGE
MAIN & UPPER DECK ARRANGEMENT
&
EQUIPMENT LIST

PLAN NO. 83019-2 REV. A





INBOARD PROFILE



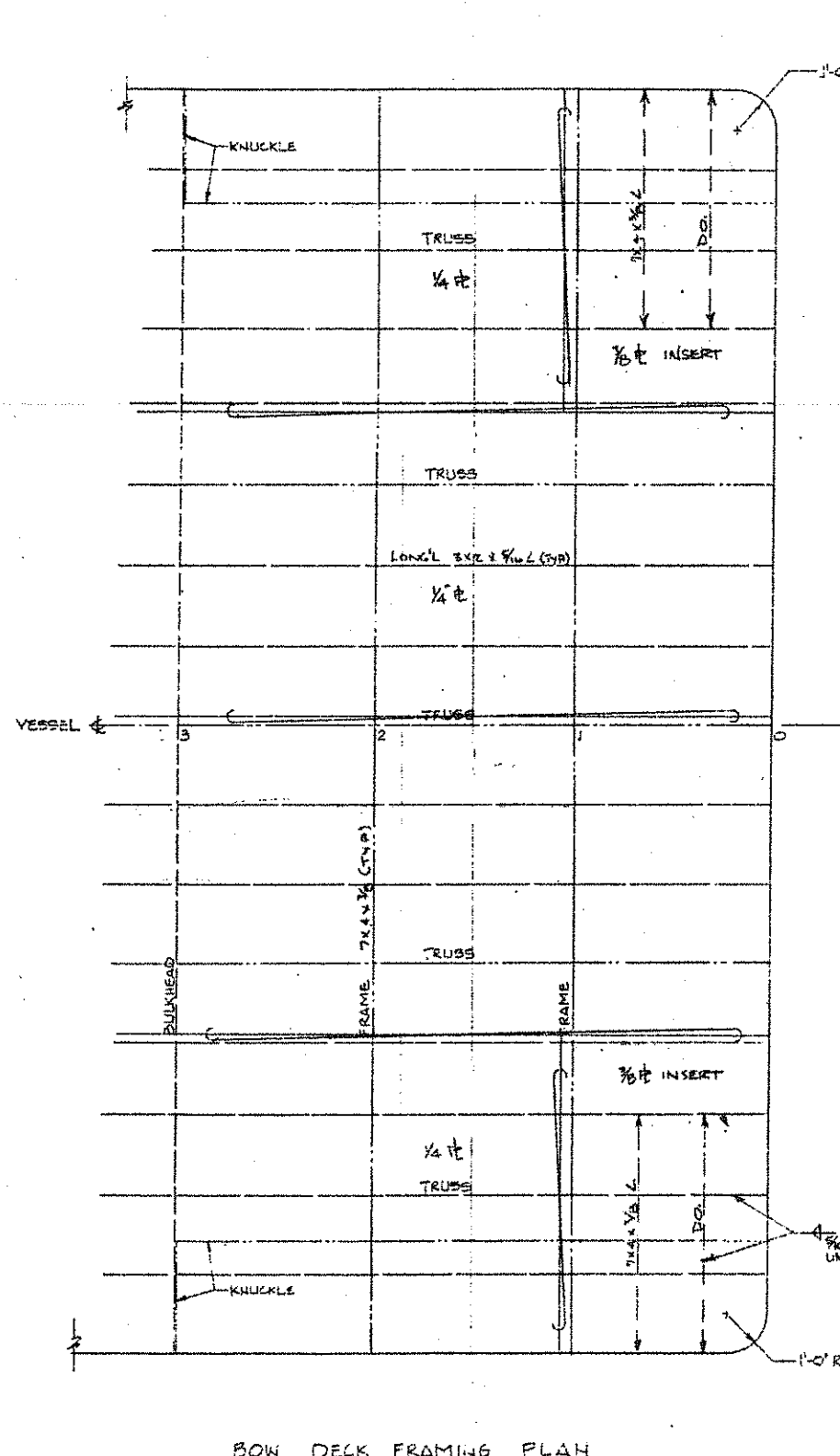
OUTBOARD PROFILE - PORT SIDE

Built for:		U. S. DEPARTMENT OF AGRICULTURE FOREST SERVICE TONGASS NATIONAL FOREST - CHATHAM AREA SITKA, ALASKA	
Designed for builder:		OREGON MARINE CONSTRUCTION, INC. PORT INDUSTRIAL PARK REEDSPORT, OREGON 97467	
Designed by:		J. CAMERON McKERNAN ENGINEER + NAVAL ARCHITECT 1820 S. E. 7TH AVENUE, PORTLAND, OREGON 97214 PHONE: (503) 232-7211	
DRAWN BY:	APPROVED BY:		
CHECKED BY:	FILE NO.:	P85-19	
SCALE:	DATE:	10/9/83	
FLOATING FIELD CAMP 105' x 31'-0" x 27'-0" STEEL BARGE INBOARD PROFILE & PORT SIDE OUTBOARD PROFILE			
PLAN NO.:		55019-4	
REV.:			

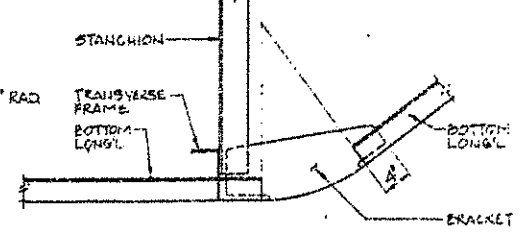
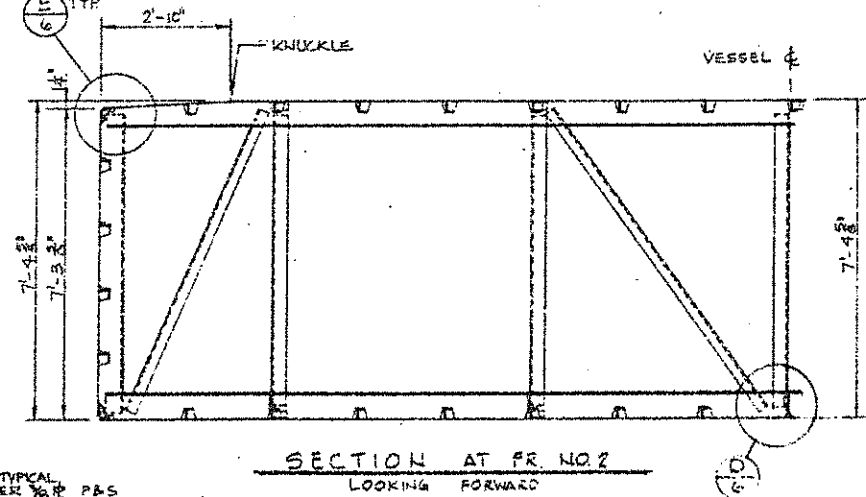
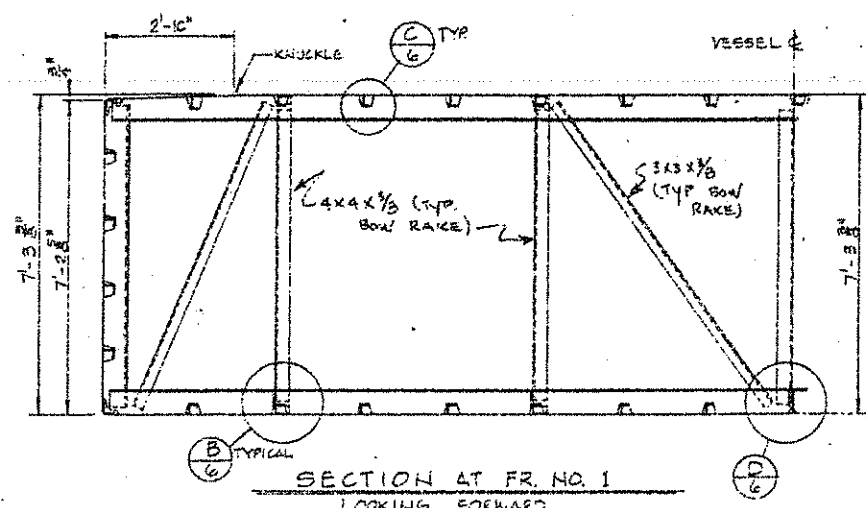
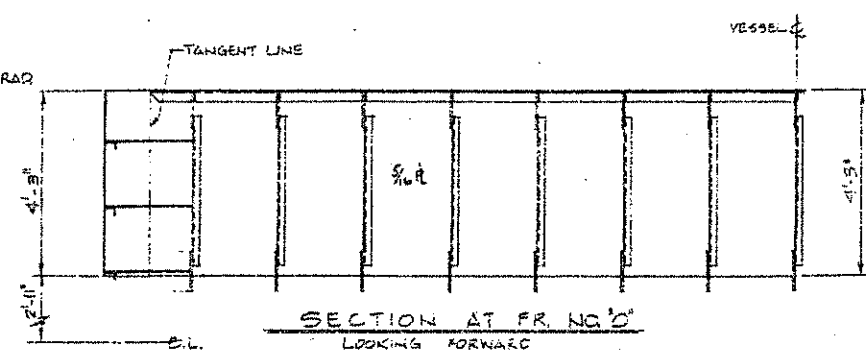


REVISIONS			
Rev.	Plan No.	Description	By/Date
A	All	NOTE: Revision "A" was prepared to record the "as-built" condition. The changes shown as Revision "A" are not to be considered as either approved or disapproved by the designer, J. Cameron McKernan.	
1		1. Revised Plan List.	
2		2. Added scuttle to hatch aft.	
2		3. Relocated furniture in cook's quarters.	
2		4. Centered kitchen sink under window and added cabinets above sink counter.	
2		5. In cook's bath added shelf behind shower.	
2		6. Added scuttle in hatch fwd.	
20		7. Revised open rest.	
17		8. Deleted top rungs on ladder.	
23		9. Added Mark 1 filter.	
24		10. Deleted Mark 1 filter.	
24		11. Revised air conditioning fan.	
24		12. Added Mark 10 pump to air conditioning fan.	
		13. Deleted 10, 11, 12 as directed by Oregon Marine Construction, Inc.	
20		13. Revised "1000" battery also revised to longer service enclosure 1-2-60.	
23		14. Changed Mark 1.	
23		15. Added 1/2" diameter, Mark 1, in new discharge.	
29		16. Revised pressure tank 1/2" connection and added reference to 1/2" discharge for connection to 1/2" discharge for connection to 1/2" discharge for connection to 1/2" discharge.	
26		17. Changed Mark 1.	
20		18. Revised engine connections and added Mark 1.	
20		19. Revised H.A.B. connection.	
30		20. Deleted Mark 1 filter and added Mark 1 filter.	
21		21. Deleted 21-1101 "A" Non-Critical Panel and replaced directly to net.	
31		22. Deleted 1000 battery.	
31		23. Deleted C.B.'s generator.	
35		24. In Roof connection detail revised attic save vent.	
39		25. On balcony outside pipe - added drainage for drainage and deleted deck and pipe.	
42		26. Covered sink under window and added dishwasher & cabinets to sink.	
42		27. Deleted wall vent fans and added wall cabinets.	
48		28. Revised fiber covering material.	
46		29. Revised cook's quarters.	
		All of Revision "A" made to record "as-built" condition. See "NOTE" at beginning of revision description.	

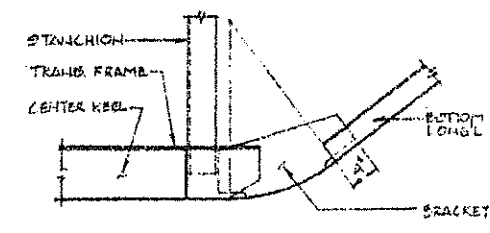
U.S. DEPARTMENT OF AGRICULTURE FOREST SERVICE TONGAS NATIONAL FOREST - CHATHAM AREA SITKA, ALASKA	
Designed for Author: OREGON MARINE CONSTRUCTION, INC. PORT INDUSTRIAL PARK REEDSPORT, OREGON 97487	
Designed by: J. CAMERON MCKERNAN ENGINEER & NAVAL ARCHITECT 1820 S. E. FIN AVENUE, PORTLAND, OREGON 97214 PHONE (503) 233-7851	
DRAWN BY: CHECKED BY: SCALE: N/A	APPROVED BY: FILE NO: P83-19 DATE: 4/17/83
FLOATING FIELD CAMP 104' x 31' x 27' x 27' STEEL BARGE	
REVISION RECORD	
PLAN NO. B5019-5 REV.	



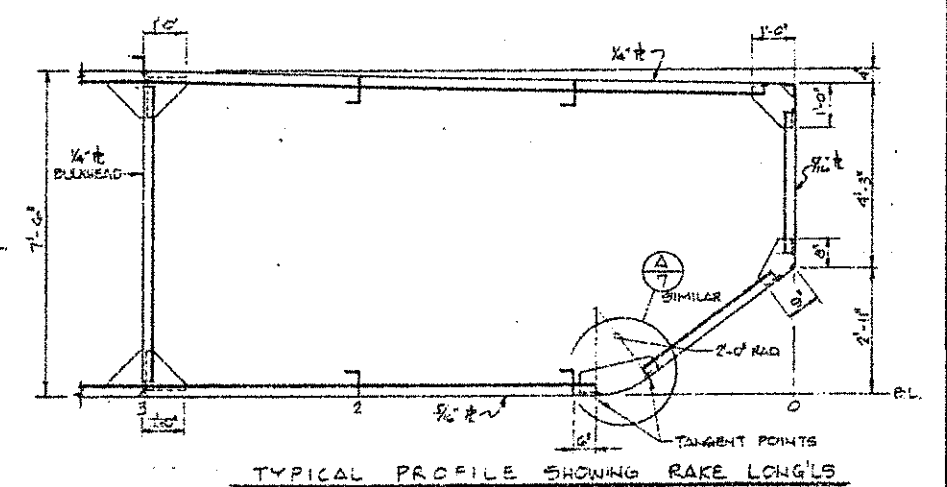
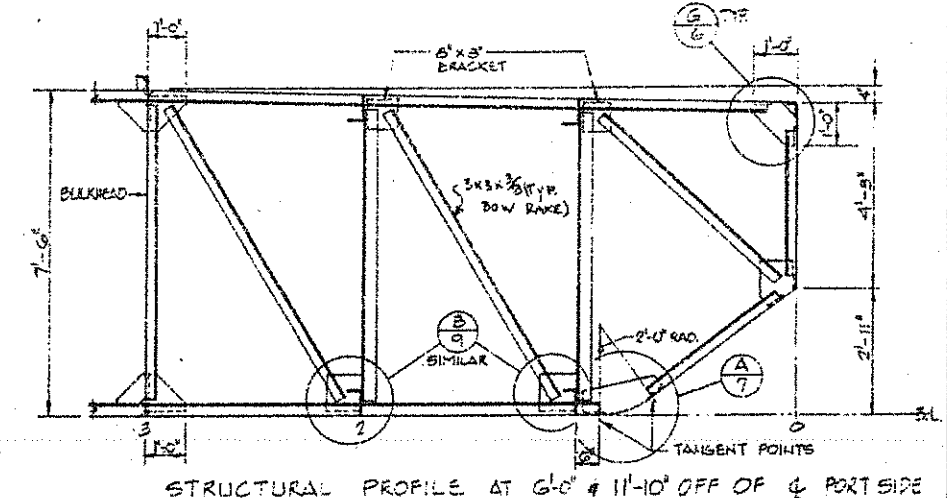
BOW DECK FRAMING PLAN



A CONNECTION DETAIL
SCALE: 1" = 1'-0"



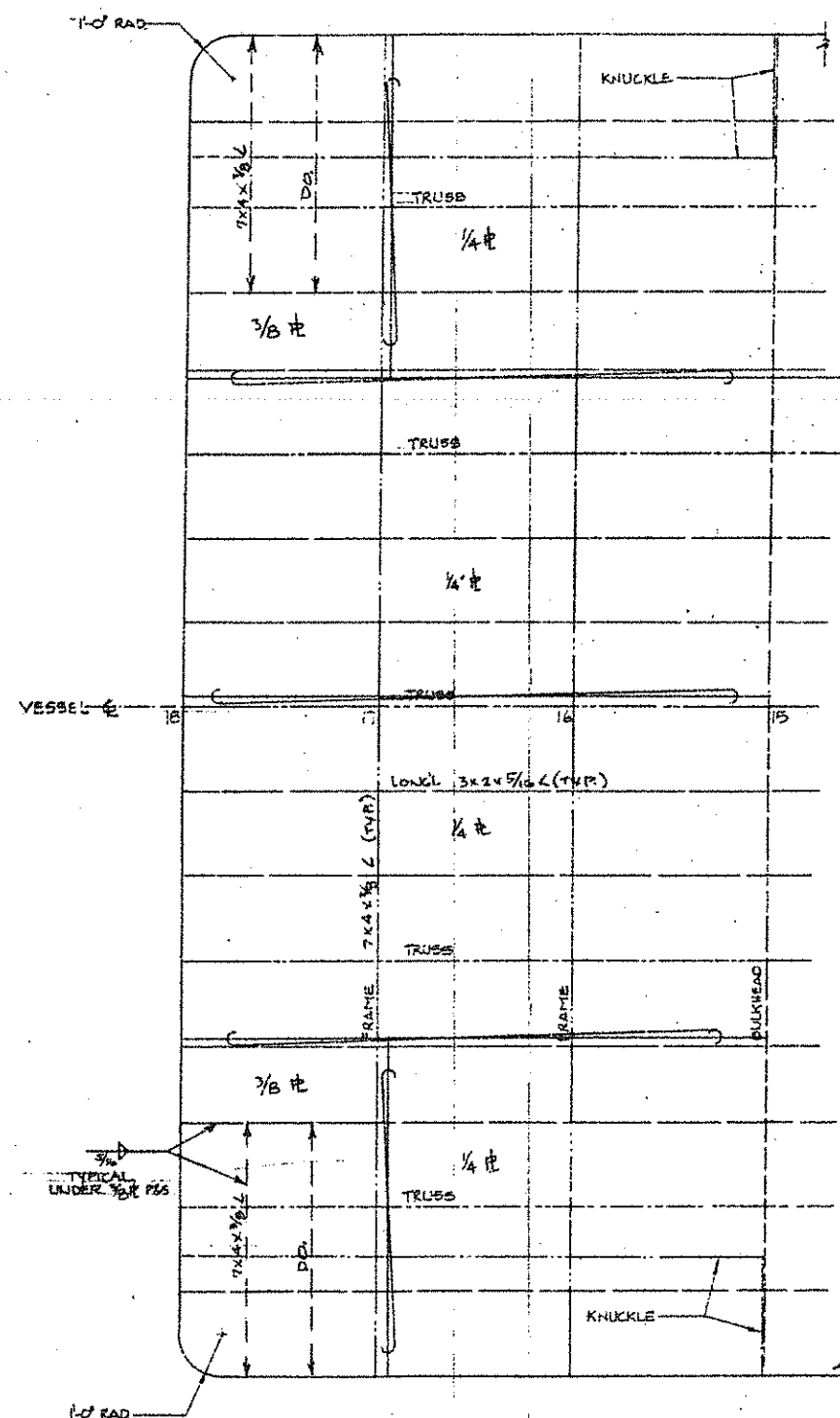
B CONNECTION DETAIL
SCALE: 1" = 1'-0"



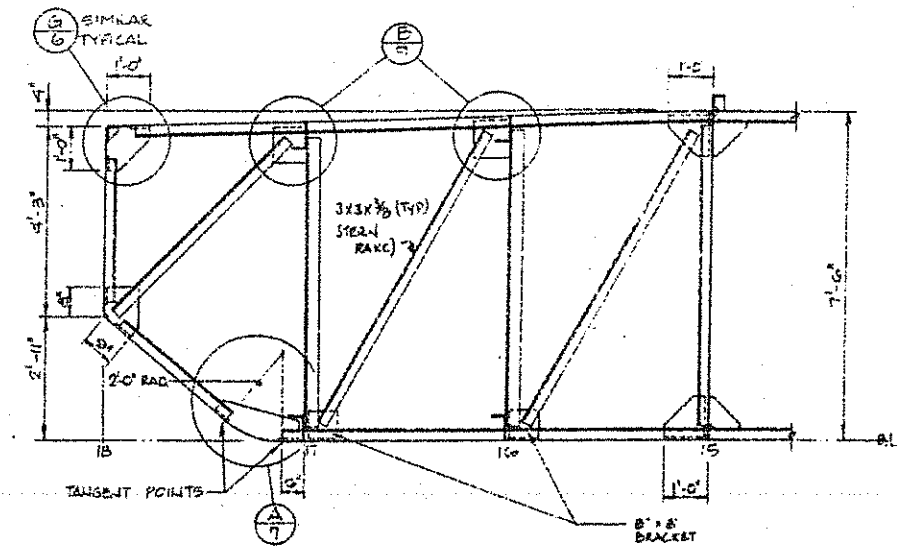
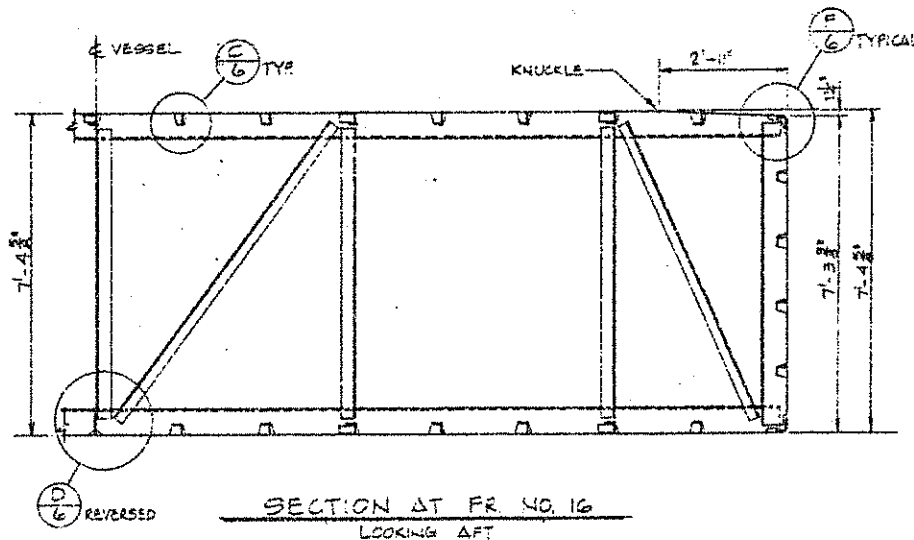
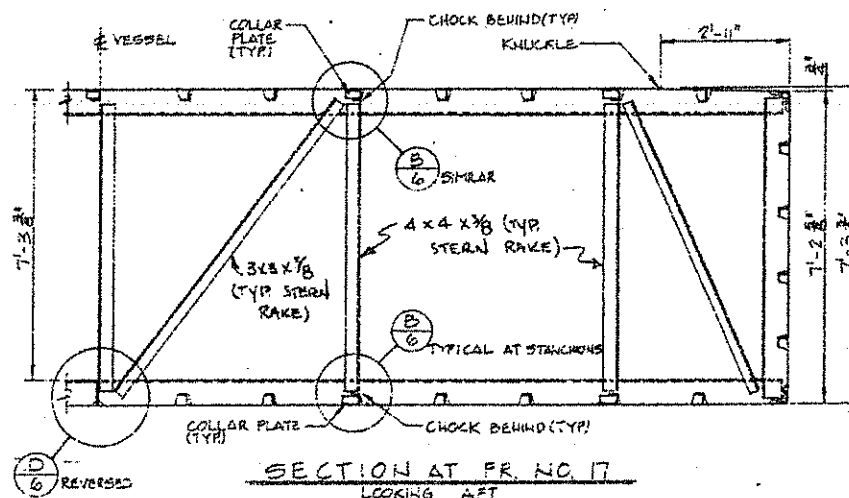
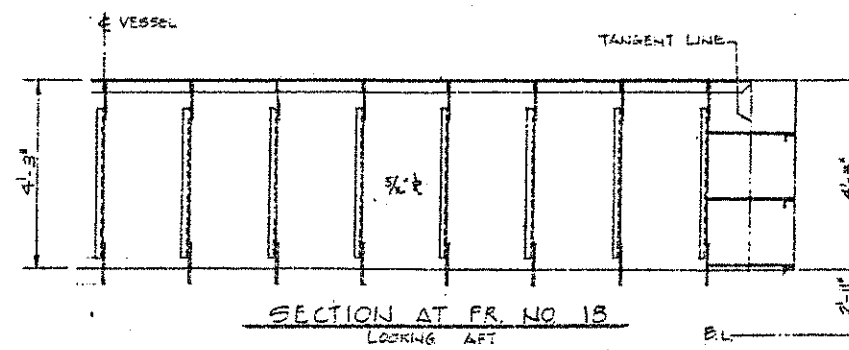
NOTE: CALL-OUTS FOR SHAPES, SIZES, WELDING, AND GENERAL DIMENSIONS ARE AS INDICATED ON DWG. NO. B3019-6
BRACKETS: ALL BRACKETS ARE 1/2\"/>

Built for: U. S. DEPARTMENT OF AGRICULTURE FOREST SERVICE TONGASS NATIONAL FOREST - CHATHAM AREA SITKA, ALASKA	
Designed for Station: OREGON MARINE CONSTRUCTION, INC. PORT INDUSTRIAL PARK REEDSPORT, OREGON 97467	
Designed by: J. CAMERON McKERNAN ENGINEER & NAVAL ARCHITECT 1830 S. E. 21st AVENUE, PORTLAND, OREGON 97214 PHONE: (503) 233-7211	
DRAWN BY: JCMH (1/11)	APPROVED BY:
CHECKED BY:	FILE NO. PM3-19
SCALE: 1/2" = 1'-0"	DATE: 7/20/55
FLOATING FIELD CAMP 186' x 21' x 17' 6" STEEL BRACKET	
BOW RAKE STRUCTURE	
PLAN NO. B3019-7	REV.

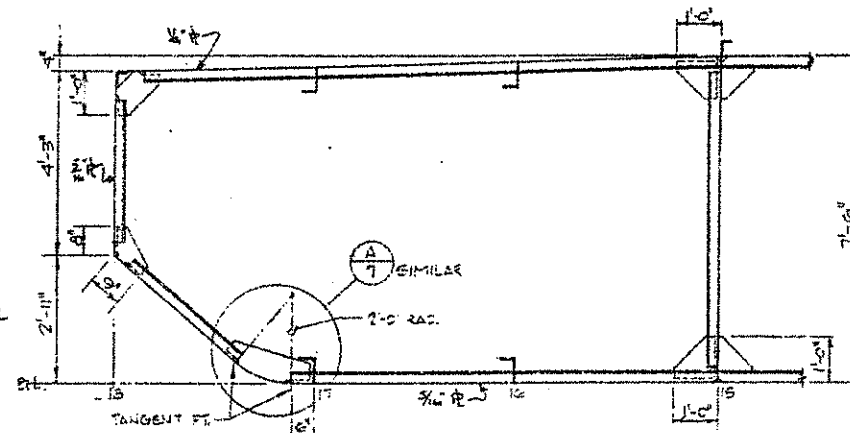




STERN DECK FRAMING PLAN



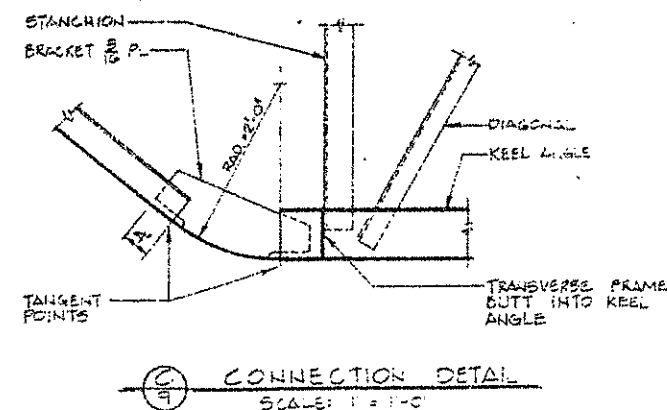
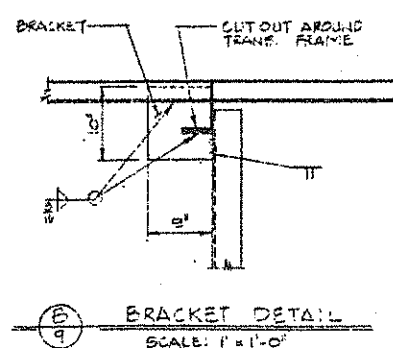
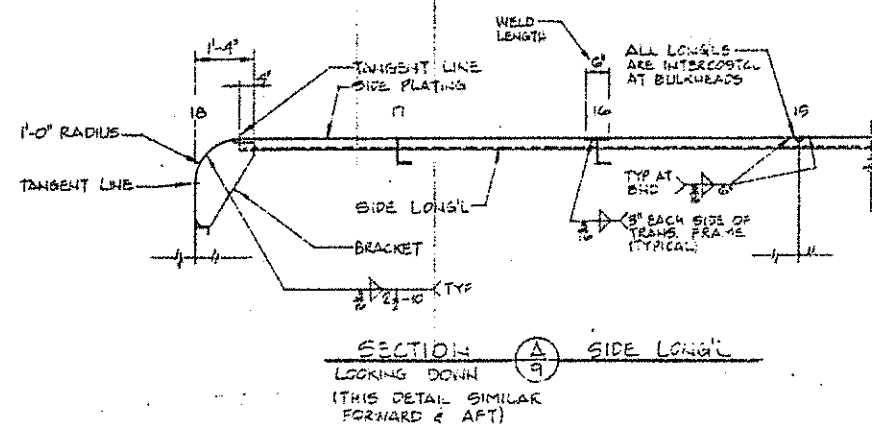
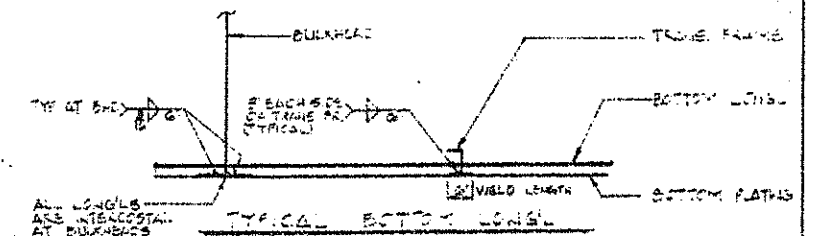
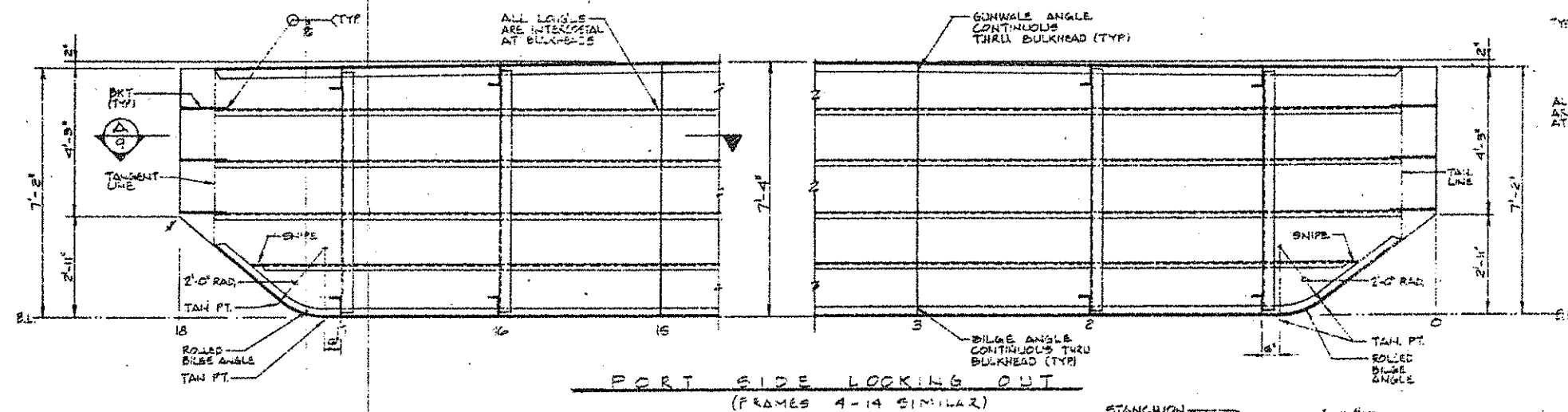
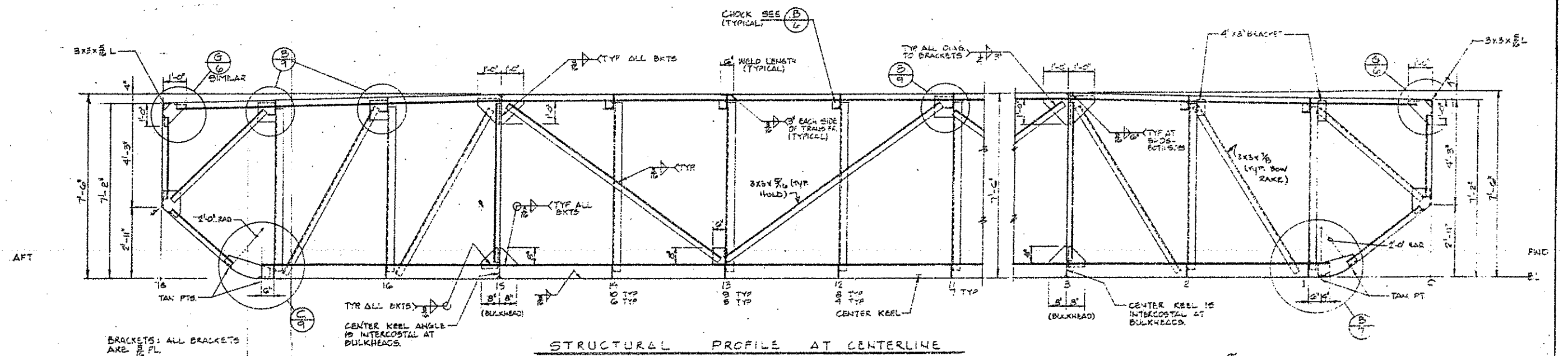
STRUCTURAL PROFILE AT 6'-0" & 11'-10" OFF OF & PORT SIDE



NOTE: CALL-OUTS FOR SHAPES, SIZES, WELDING, AND GENERAL DIMENSIONS ARE AS INDICATED ON DWG. NO. B3019-6

Built for:		U.S. DEPARTMENT OF AGRICULTURE FOREST SERVICE TONGASS NATIONAL FOREST - CHATHAM AREA SITKA, ALASKA	
Designed for Number:		OREGON MARINE CONSTRUCTION, INC. PORT INDUSTRIAL PARK REDSPOUT, OREGON 97467	
Designed by:		J. CAMERON McKERNAN ENGINEER + NAVAL ARCHITECT 1220 S. W. 11th AVENUE, PORTLAND, OREGON 97214 PHONE: (503) 232-7211	
DRAWN BY:	APPROVED BY:		
CHECKED BY:	FILE NO.:	FMB-19	
SCALE:	DATE:	7/25/55	
FLOATING FIELD CAMP (65' x 21'-0" x 21'-0" STEEL BARGE) STEERN RAKE STRUCTURE			
PLAN NO.		B3019-6	
REV.			





Built for: U.S. DEPARTMENT OF AGRICULTURE FOREST SERVICE TONGASS NATIONAL FOREST - CHATHAM AREA SITKA, ALASKA	
Designed for Station: OREGON MARINE CONSTRUCTION, INC. PORT INDUSTRIAL PARK REEDSPORT, OREGON 97467	
Designed by: J. CAMERON McKERNAN ENGINEER & NAVAL ARCHITECT 1230 S. E. 7TH AVENUE, PORTLAND, OREGON 97214 PHONE (503) 222-7211	
DRAWN BY: <i>Kml</i>	APPROVED BY: _____
CHECKED BY: _____	FILE NO.: P85-19
SCALE: 1/2" = 1'-0"	DATE: 7/30/78
FLOATING FIELD CAMP (85' x 37' 6" x 17' 6" STEEL BARGE) STRUCTURAL PROFILES & DETAILS	
PLAN NO.: B3019-91	REV:

