







## RTA



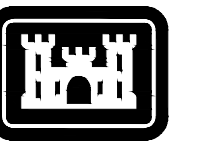
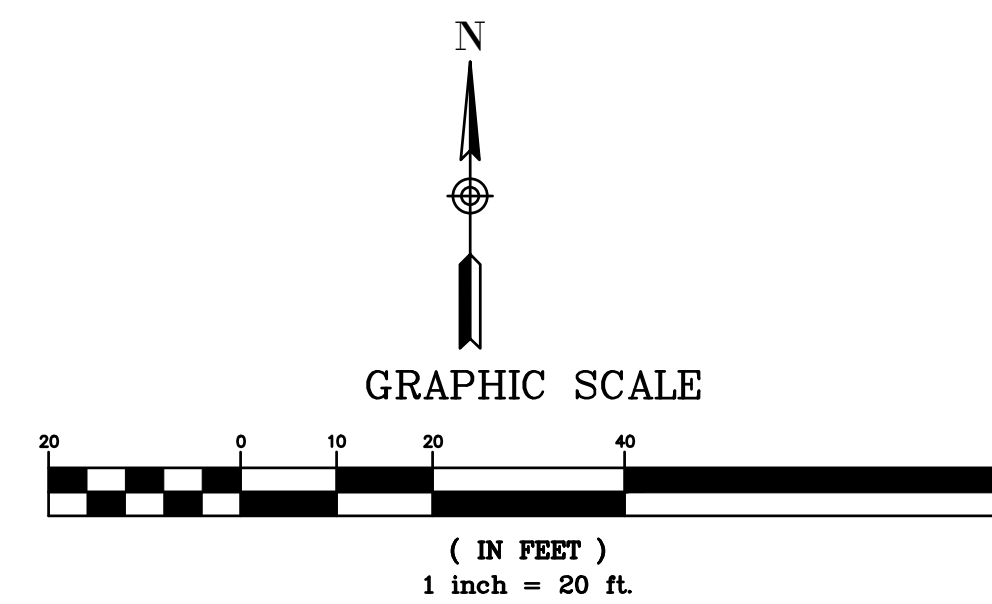


GENERAL NOTES:

1. THE PRIMARY PHASE CONDUCTORS SHALL BE SINGLE CONDUCTOR COPPER, 15KV, 133 PERCENT INSULATION, TYPE MV105, WITH A SEMI CONDUCTING SCREEN, EPR INSULATION, AND COPPER TAPE SHIELDING.
2. FIELD VERIFY EXISTING CONDITIONS.
3. POLE NUMBERS AND POLES SHALL NO LONGER EXIST AFTER DEMOLITION. POLE NUMBERS AND POLE LOCATIONS ARE FOR REFERENCE ONLY.
4. REFER TO SHEET E-001 FOR LEGEND AND ABBREVIATIONS.
5. CHECK PHASE ROTATION BEFORE AND AFTER SWITCHING OH 12KV TO UNDERGROUND CABLE.
6. OCLIN OPYION 5: THIS OPTION SHALL INCLUDE THE WORK FROM POLE W/41 TO POLE W/47 AND TO POLE EW/2. IF ONLY CLIN OPTION 5 IS SELECTED PROVIDE CABLE AND DUCT BANK PER KEY NOTE 1 FROM POLE W/41 TO POLE W/47 AND POLE EW/2 AND PROVIDE A RISER ON POLE W/47 AND POLE EW/2.

**#** KEY NOTES:

1. PROVIDE (3) # 4/0 15KV EPR, COPPER CABLE FOR PRIMARY POWER IN TWO CONDUITS. PROVIDE DUCTBANK PER DETAIL 6 SHEET E-503.
2. PROVIDE NEW LIGHT POLES AND LUMINARIES PER DETAILS 4 AND 5 ON SHEET E-501. MOUNT NEW LUMINARIES ON LIGHT POLES AT 24 FEET HEIGHT. PROVIDE HANDHOLE PER DETAIL 3 ON SHEET E-502.
3. PROVIDE ELECTRICAL MANHOLE PER DETAIL 1 SHEET E-502.
4. PROVIDE NEW RISER ON POLE W/47 TO MAINTAIN EXISTING LIGHTING PER DETAIL 1 AND 2 ON SHEET E-501 AND DETAIL 3 ON SHEET E-503 FOR THE DOWN GUY .
5. EXISTING 500 KVA, 3-PHASE, 4W,12470-480/277 TRANSFORMER.
6. -----
7. PROVIDE (2) #3/0 AND (1) #12 G , COPPER CABLE FOR LIGHTING. PROVIDE LIGHTING DUCTBANK PER DETAIL 4 ON SHEET E-503.
8. PROVIDE(3) # 4/0 15KV EPR, COPPER CABLE FOR PRIMARY POWER. PROVIDE DUCTBANK PER DETAIL 4 SHEET E-502.

[illegible]

U.S. ARMY CORPS OF ENGINEERS SACRAMENTO DISTRICT 1325 J STREET SACRAMENTO, CA 95814	DESIGNED BY: R. LEON	ISSUE DATE: 09/22/92
IN-HOUSE DESIGN 1325 J STREET SACRAMENTO, CA 95814	CHECKED BY: A. PASCUAL PE	CONTRACT NO: 7800-XX-XXXXX
	SUBMITTED BY: A. PASCUAL PE	SPEC NO: 2410
	ANSI D	DESIGN FILE NO: 130-25-0933

12KV OVERHEAD TO UNDERGROUND POWER LINE REPLACEMENT  
PN# 490571

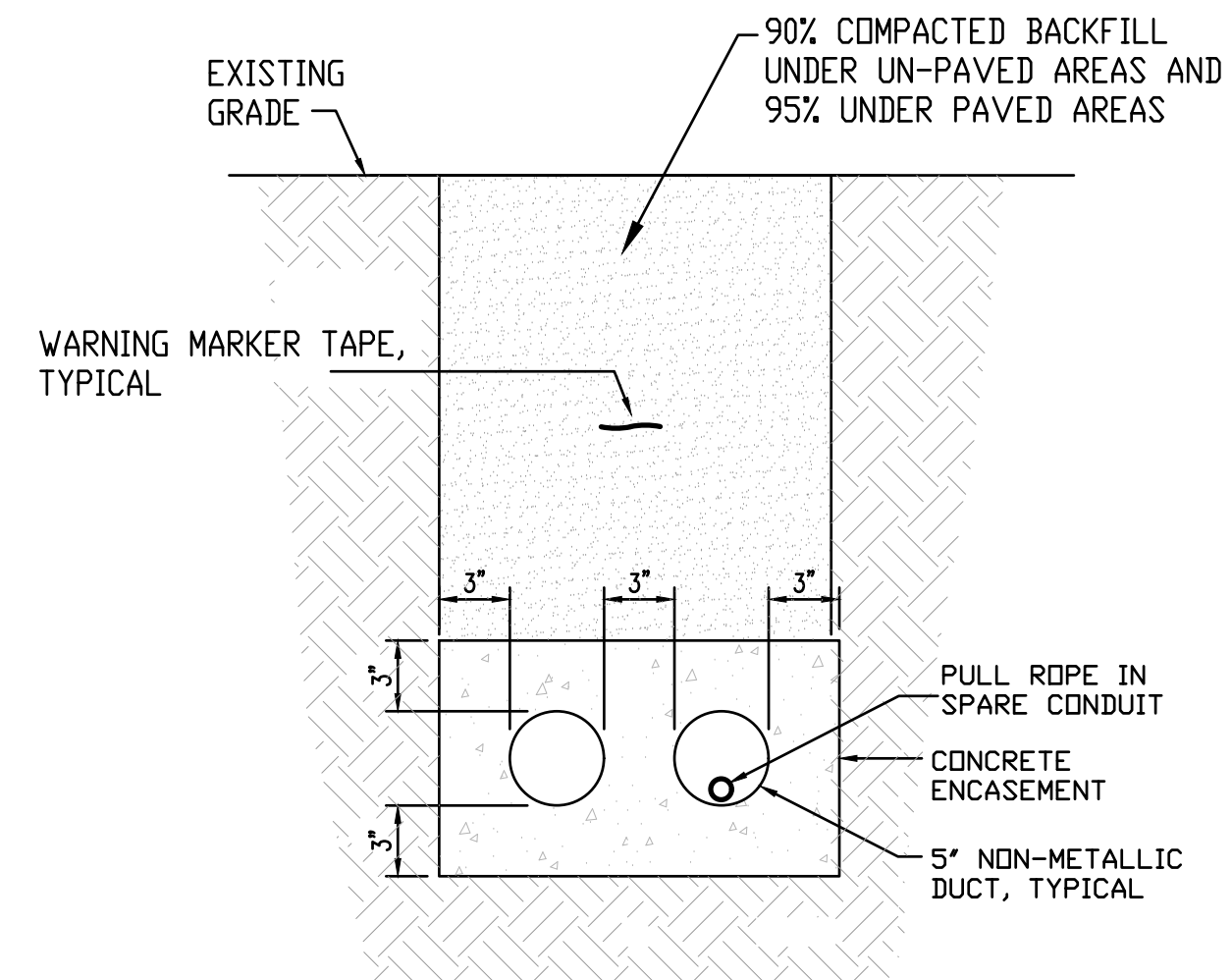
**SITE PLAN**  
**STATION 28+00 TO 23+00**  
**OPTION BID**

SHEET ID

E-110







TYPE	HANDHOLE SIZING
7	12" X 24" X 24" DEEP

## HANDHOLE REQUIREMENTS

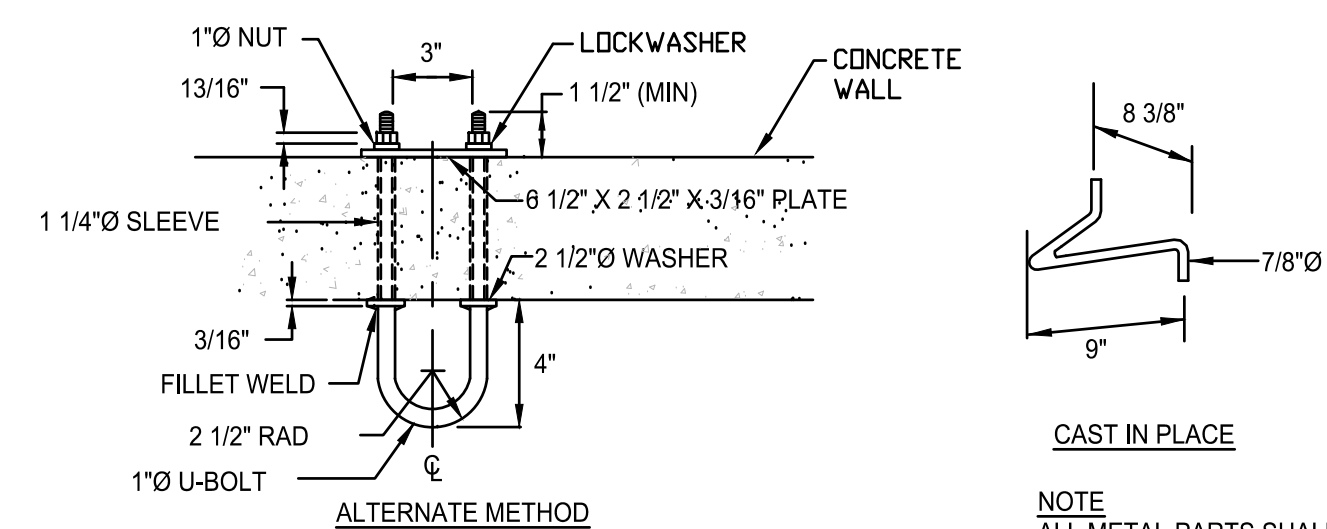
1. HOUSING SHALL BE A POLYMER CONCRETE REINFORCED WITH A HEAVY WEAVE FIBERGLASS REINFORCING WITH COMPRESSIVE STRENGTH OF NO LESS THAN 10,000 PSI.
2. COVER AND BOX SHALL WITHSTAND A SERVICE LOAD OF NO LESS THAN 15,000 LBS OVER A 10" x 10" AREA.
3. PROVIDE STAINLESS STEEL BOLTS AND INSERTS.
4. PROVIDE WITH (2) 2 1/2" MOUSEHOLES.
5. PROVIDE LABEL "LIGHTING" FOR LIGHTING HANDHOLES.

STANDARD LIGHTING HANDHOLE (TRAFFIC)  
(COMPOSITE/FIBERGLASS) TYPE 7

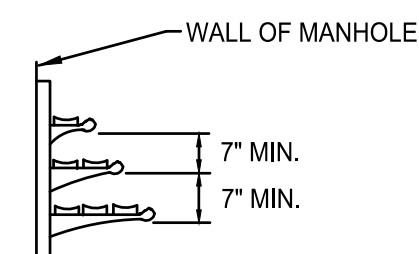
NOT TO SCALE

2-WAY 5" CONCRETE ENCASED  
ELECTRICAL DUCTBANK

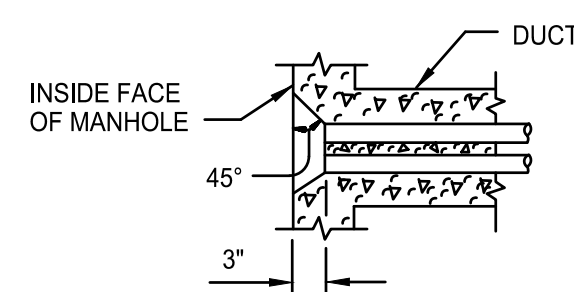
NO SCALE



### DETAIL OF PULLING-IN IRON



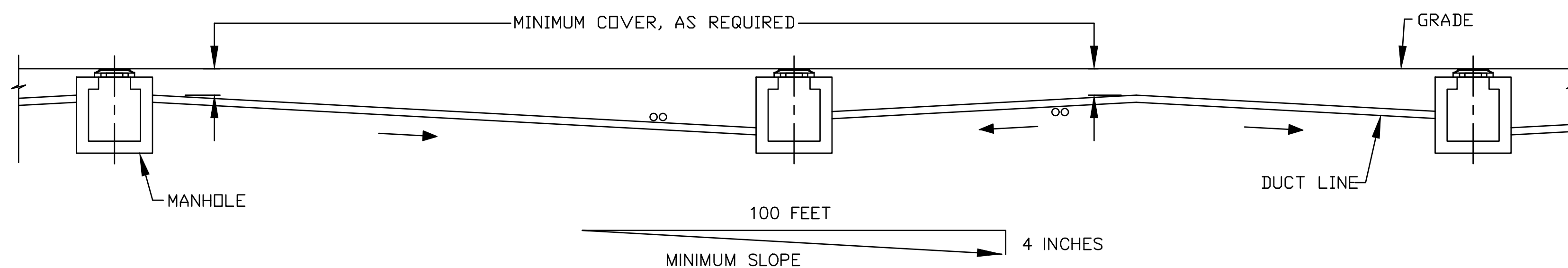
TYPICAL CABLE RACK WITH PORCELAIN INSULATORS



### TYPICAL DUCT ENTRANCE

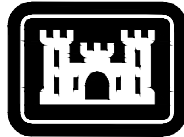
### DETAILS (PULLING-IN IRONS, CABLE RACK AND DUCT ENTRANCE)

NOT TO SCALE



# DUCT LINE ELEVATION

NOT TO SCALE



**US Army Corps  
of Engineers®**

[illegible]

U.S. ARMY CORPS OF ENGINEERS SACRAMENTO DISTRICT 1325 J STREET SACRAMENTO CA 95814	DESIGNED BY: R. LEON	ISSUE DATE: FEBRUARY 1992
	DRAWN BY: R. LEON	SOLICITATION NO.: W91328-XX-XXXXX
	CHECKED BY:	CONTRACT NO.: W928XX-XXXXX
IN-HOUSE DESIGN 1325 J STREET SACRAMENTO CA 95814	SUBMITTED BY: A. PASCUA, PE	SPEC NO.: 2410
	SIZE: 130-254/1933	DESIGN FILE NO.: ANSLD

DDJC TRACY, CA  
12KV OVERHEAD TO UNDERGROUND POWER LINE REPLACEMENT  
PN# 490571

SHEET ID

E-502



