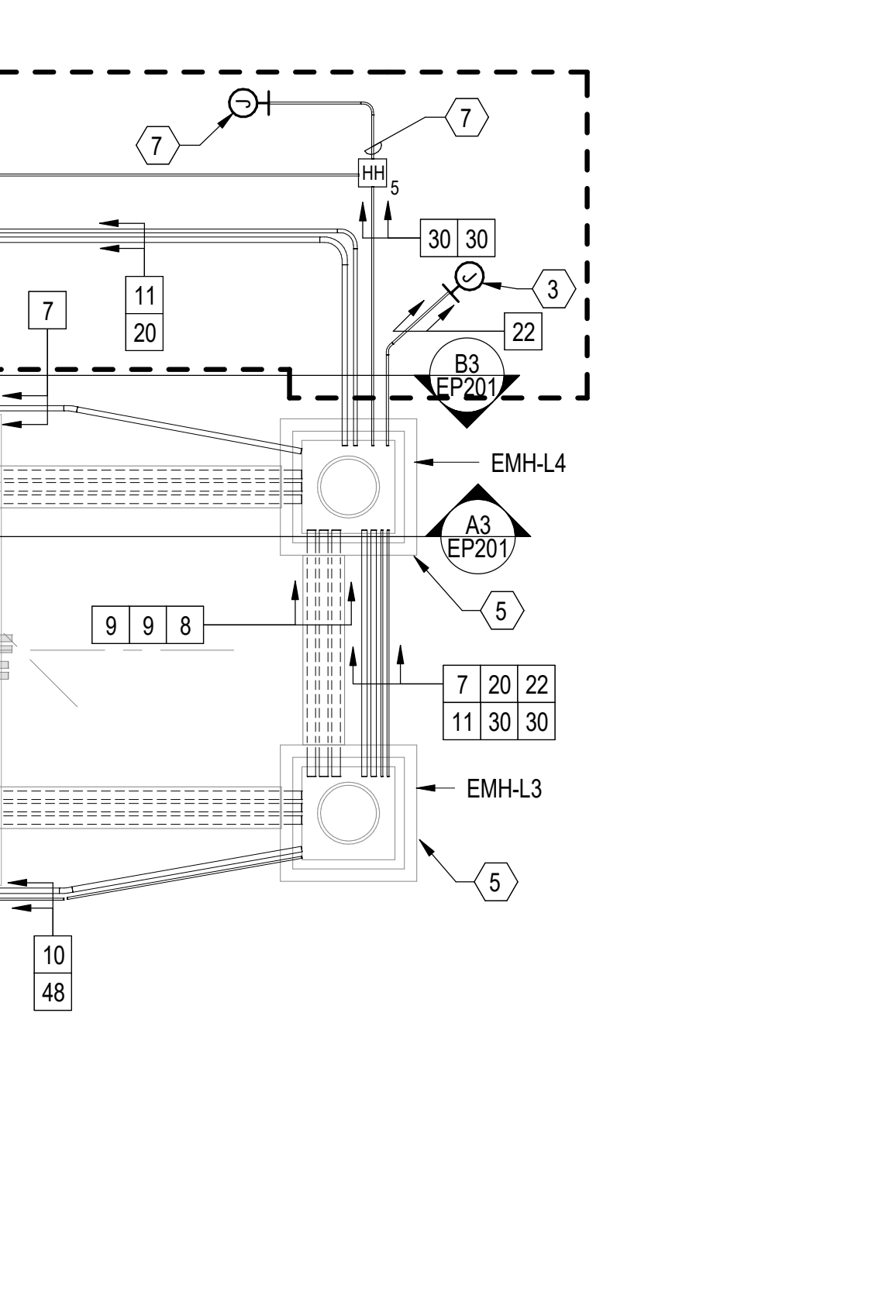


SHEET NOTES

- SEE SHEET ES101 FOR THE ELECTRICAL AND TELECOM FEEDER SCHEDULE.

SHEET KEYNOTES

- TELECOM CIRCUITS. SEE SHEET TN101.
- HANDHOLE FOR LIGHTING CIRCUITS. REFER TO SHEET SB522 FOR ADDITIONAL INFORMATION.
- REFER TO SHEET A1/ES104 FOR LIFT STATION CONTROL PANEL.
- PROVIDE CONNECTION TO POLE MOUNTED EXTERIOR CAMERAS. REFER TO EMLV1-5 ON SHEET E-741 FOR BRANCH CIRCUIT INFORMATION.
- UNDER BASE BID, PROVIDE CONDUITS FOR THE FLOATING DOCK UP TO MANHOLES EMH-L3 AND EMH-L4. MANHOLES ARE PART OF THE BASE BID.
- PROVIDE CONNECTION HEATING ENCLOSURE. REFER TO MECHLVB-14 ON SHEET E-744 FOR BRANCH CIRCUIT INFORMATION.
- PROVIDE CONNECTION TO PIER ACU. REFER TO EMLV1-4 ON SHEET E-741 FOR BRANCH CIRCUIT INFORMATION. REFER TO SHEET ES104 FOR PIER ACU LOCATION.
- REFER TO DETAIL C2/EP505 FOR FLOATING DECK HANDHOLE.
- ROUTE HEAT TRACE PANEL FEEDER CONDUIT THROUGH SLAB.

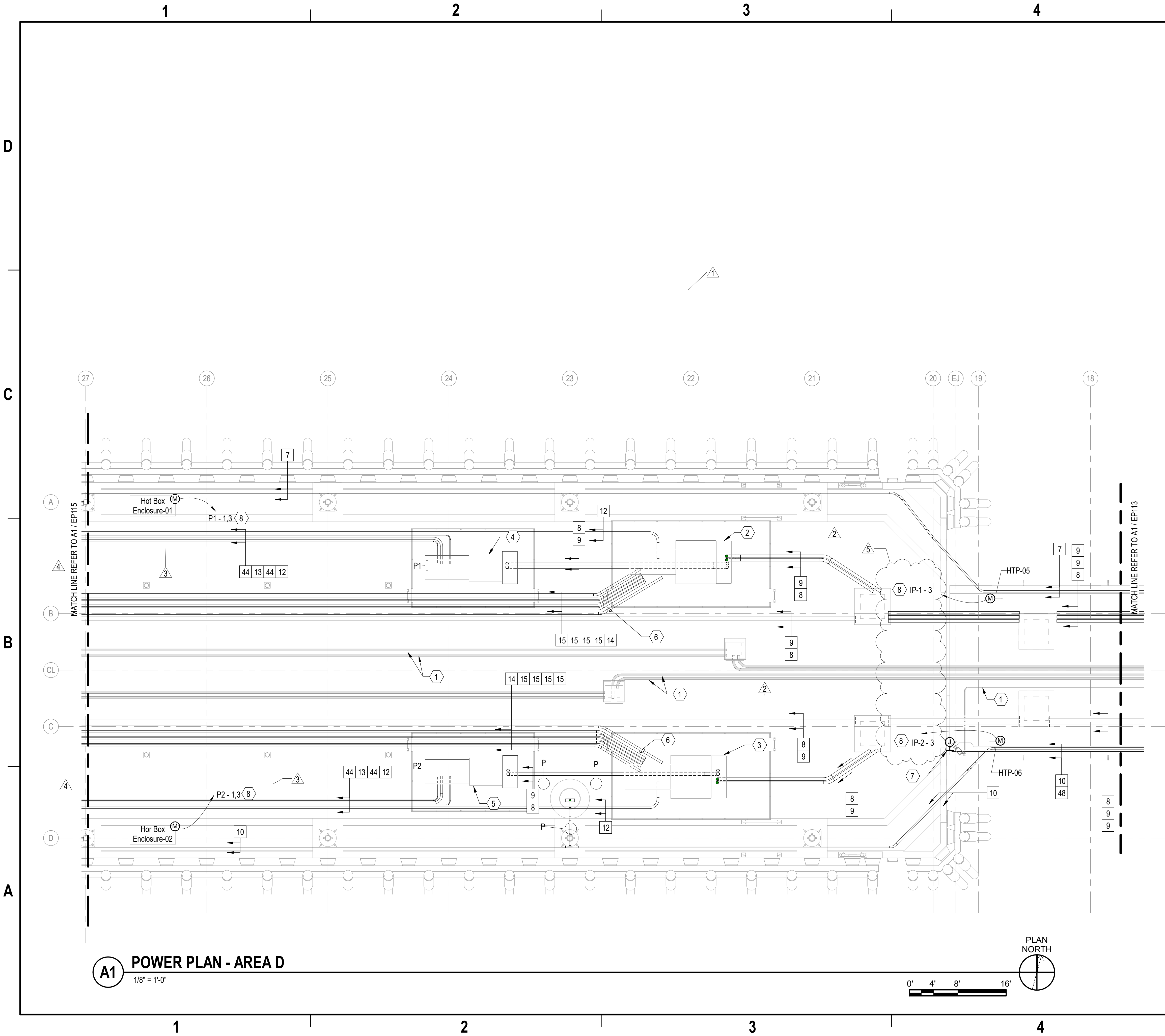


KEY PLAN

POWER PLAN - AREA A

1/8" = 1'-0"

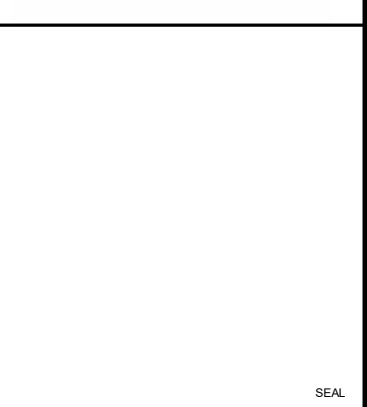
APPROVED	FOR COMMANDER NAVFAC	ACTIVITY	Timothy Calohan, PE, NOAA Senior Project Manager	SATISFACTORY TO DATE	04OCT2022	DES	JR	DRW	BG	CHK	JC	PM/DM	RS/RC	BRANCH MANAGER	JAS	CHIEF ENGINEER	EJA	FIRE PROTECTION	DSN
NAVAL FACILITIES ENGINEERING SYSTEMS COMMAND NAVAL STATION NORFOLK - NORFOLK, VA NAVAL STATION NEWPORT NOAA OMAO SHIP & SUPPORT FACILITY RELOCATION NEWPORT, RHODE ISLAND																			
PIER - POWER PLAN - AREA A																			
SCALE: AS NOTED PROJECT NO.: 1562331 CONSTR. CONTR. NO. N4008523R2527 NAVFAC DRAWING NO. 12874264 SHEET 388 OF 504 DRAWING REVISION: 25 AUGUST 2020																			



- ### SHEET NOTES
- SEE SHEET ES101 FOR THE ELECTRICAL AND TELECOM FEEDER SCHEDULE.
 - THE DIMENSIONS OF THE UNIT SUBSTATIONS ON THE PIER CANNOT BE EXCEEDED AS TO NOT INTRUDE INTO THE PIER FIRE LANE. ALL NEC CLEARANCES MUST BE OBSERVED. PRIMARY AND SECONDARY SECTIONS MUST BE FRONT ACCESS ONLY.
 - PRIOR TO FINAL DESIGN FABRICATION AND INSTALLATION OF PLATFORM, COORDINATE UNIT SUBSTATION MOUNTING POINTS WITH THE PLATFORM STRUCTURE TO AVOID MISALIGNMENT WITH THE UNIT SUBSTATION MOUNTING LOCATIONS.

- ### SHEET KEYNOTES
- TELECOM CIRCUITS. SEE SHEET TN103.
 - UNIT SUBSTATION B-1. SEE ELEVATION ON DETAIL A2 / EP503.
 - UNIT SUBSTATION B-2. SEE ELEVATION ON DETAIL A2 / EP503.
 - UNIT SUBSTATION IP-1. SEE DETAIL B2 / EP503.
 - UNIT SUBSTATION IP-2. SEE DETAIL B2 / EP503.
 - PROVIDE CONTROL WIRING IN 3" SCHD40 PVC CONDUIT FOR SHIP SHORE POWER.
 - PROVIDE CONNECTION TO POLE MOUNTED EXTERIOR CAMERAS. REFER TO EMLV1-5 ON SHEET E-741 FOR BRANCH CIRCUIT INFORMATION.
 - ROUTE HEAT TRACE PANEL (HTP) AND HOT BOX HEATER FEEDER CONDUIT THROUGH SLAB.

REV	DATE	DESCRIPTION
5	06/27/2023	UPDATED HTPS SERVICE PANEL BOARD
4	06/15/2023	UPDATED CONDUITS ROUTE
3	04/17/2023	UPDATED HEATING BOX LOAD
2	02/27/2023	UPDATED UNIT SUBSTATIONS
1	02/27/2023	BASE BID UPDATE



APPROVED
FOR COMMANDER NAVFAC
ACTIVITY
Timothy Calohan, PE, NOAA Senior Project Manager
SATISFACTORY TO DATE 04OCT2022
DES JR DRW BG CHK JC
PM/DW RS/RC
BRANCH MANAGER JAS
CHIEF ENGINEER EJA
FIRE PROTECTION DSN

DEPARTMENT OF THE NAVY
NAVAL FACILITIES ENGINEERING SYSTEMS COMMAND
NAVAL FACILITIES ENGINEERING SYSTEMS COMMAND - MID-ATLANTIC
MID-ATLANTIC
NAVAL STATION NORFOLK - NORFOLK, VA
NAVAL STATION NEWPORT
NOAA OMAO SHIP & SUPPORT FACILITY RELOCATION
NEWPORT, RHODE ISLAND

PIER - POWER PLAN - AREA D

KEY PLAN

SCALE: AS NOTED

PROJECT NO.: 1562331

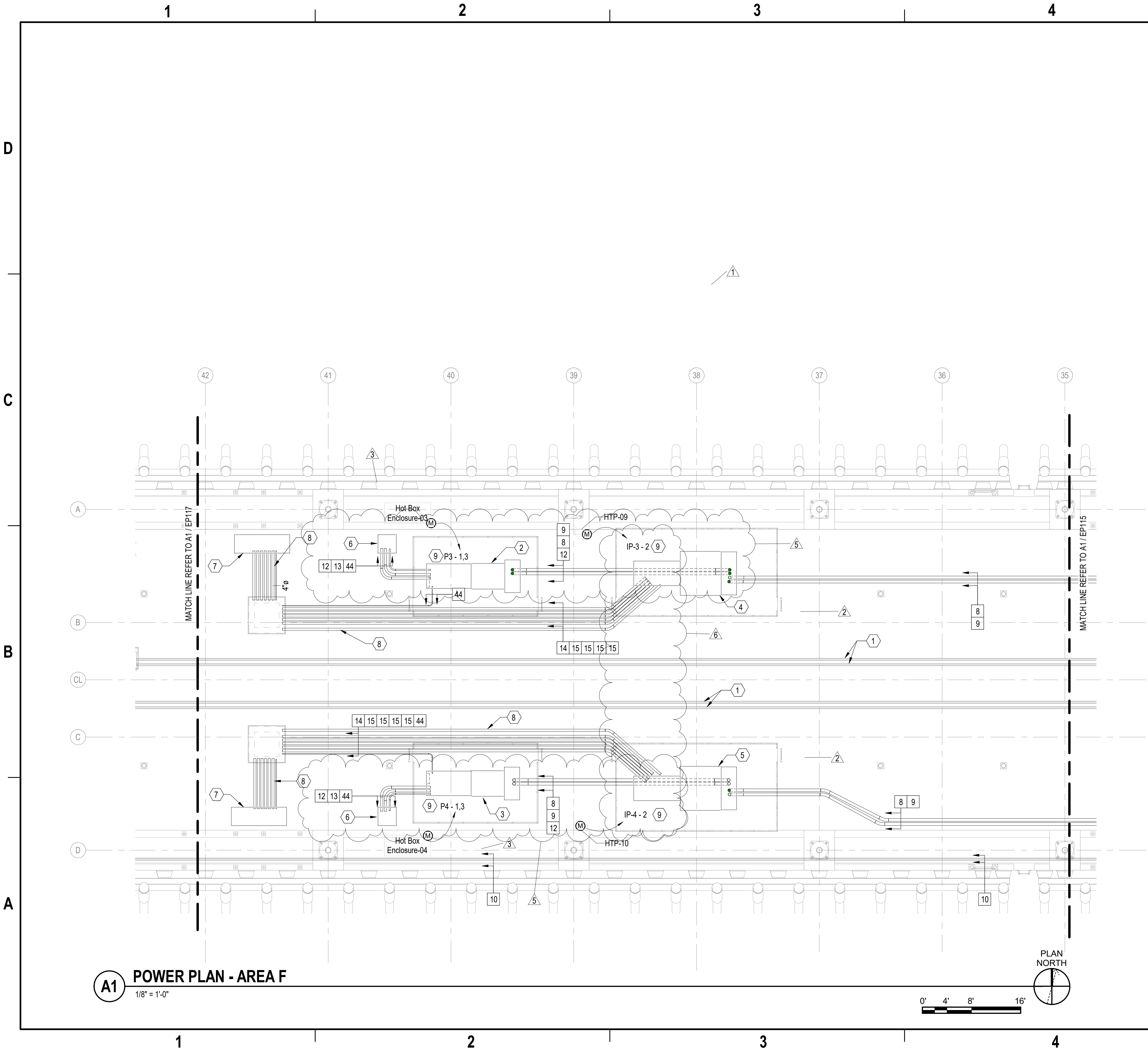
CONSTR. CONTR. NO. N4008523R2527

NAVFAC DRAWING NO. 12874267

SHEET 391 OF 504

EP114

DRAWING REVISION: 25 AUGUST 2020



A1 POWER PLAN - AREA F
1/8" = 1'-0"

SHEET NOTES

- SEE SHEET ES101 FOR THE ELECTRICAL AND TELECOM FEEDER SCHEDULE.
- THE DIMENSIONS OF THE UNIT SUBSTATIONS ON THE PIER CANNOT BE EXCEEDED AS TO NOT INTRUDE INTO THE PIER FIRE LANE. ALL NEC CLEARANCES MUST BE OBSERVED. PRIMARY AND SECONDARY SECTIONS MUST BE FRONT ACCESS ONLY.
- PRIOR TO FINAL DESIGN FABRICATION AND INSTALLATION OF PLATFORM, COORDINATE UNIT SUBSTATION MOUNTING POINTS WITH THE PLATFORM STRUCTURE TO AVOID MISALIGNMENT WITH THE UNIT SUBSTATION MOUNTING LOCATIONS.

SHEET KEYNOTES

- TELECOM CIRCUITS. SEE SHEET TN105.
- UNIT SUBSTATION IP-3. SEE DETAIL B2 / EP503.
- UNIT SUBSTATION IP-4. SEE DETAIL B2 / EP503.
- UNIT SUBSTATION B-3. SEE DETAIL A2 / EP503.
- UNIT SUBSTATION B-4. SEE DETAIL A2 / EP503.
- PIER INDUSTRIAL POWER LVCB. SEE DETAIL A2 / EP505.
- PIER SHORE POWER LVCB. SEE DETAIL A2 / EP508.
- PROVIDE CONTROL WIRING IN 3" SCHD40 PVC CONDUIT FOR PIER SHORE POWER.
- ROUTE HEAT TRACE PANEL (HTP) AND HOT BOX HEATER FEEDER CONDUIT THROUGH SLAB.



APPROVED

FOR COMMANDER NAVFAC

ACTIVITY

Timothy Calohan, PE,
NOAA Senior Project Manager

SATISFACTORY TO DATE 04OCT2022

DES JR DRW BG CHK JC

PM/DW RS/RC

BRANCH MANAGER JAS

CHIEF ENGINEER EJA

FIRE PROTECTION DSN

NAVAL FACILITIES ENGINEERING SYSTEMS COMMAND

NAVAL FACILITIES ENGINEERING SYSTEMS COMMAND - MID-ATLANTIC

NAVAL STATION NORFOLK - NORFOLK, VA

NAVAL STATION NEWPORT

NOAA OMAO SHIP & SUPPORT FACILITY RELOCATION

NEWPORT, RHODE ISLAND

PIER - POWER PLAN - AREA F

SCALE: AS NOTED

PROJECT NO.: 1562331

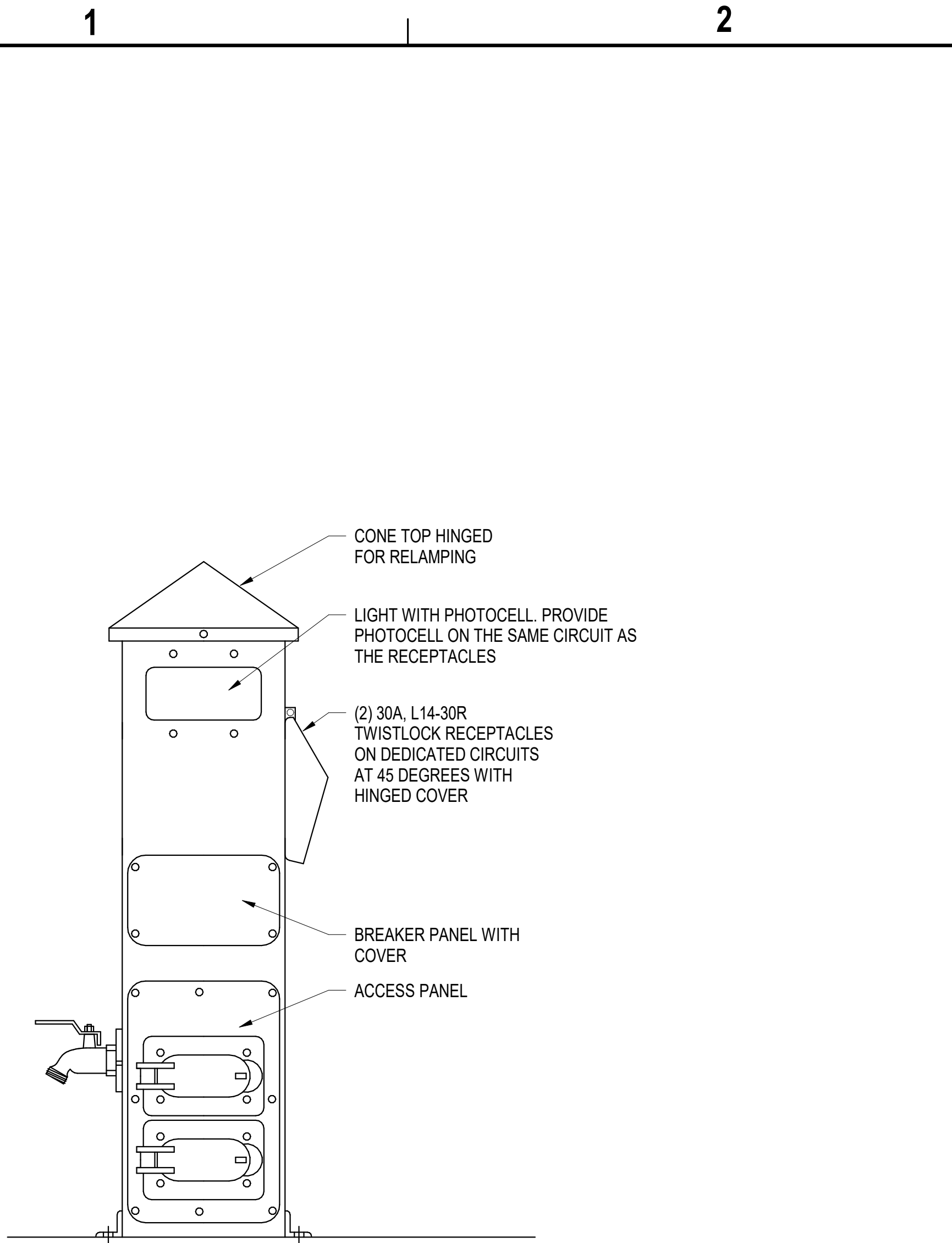
CONSTR. CONTR. NO. N4008523R2527

NAVFAC DRAWING NO. 12874269

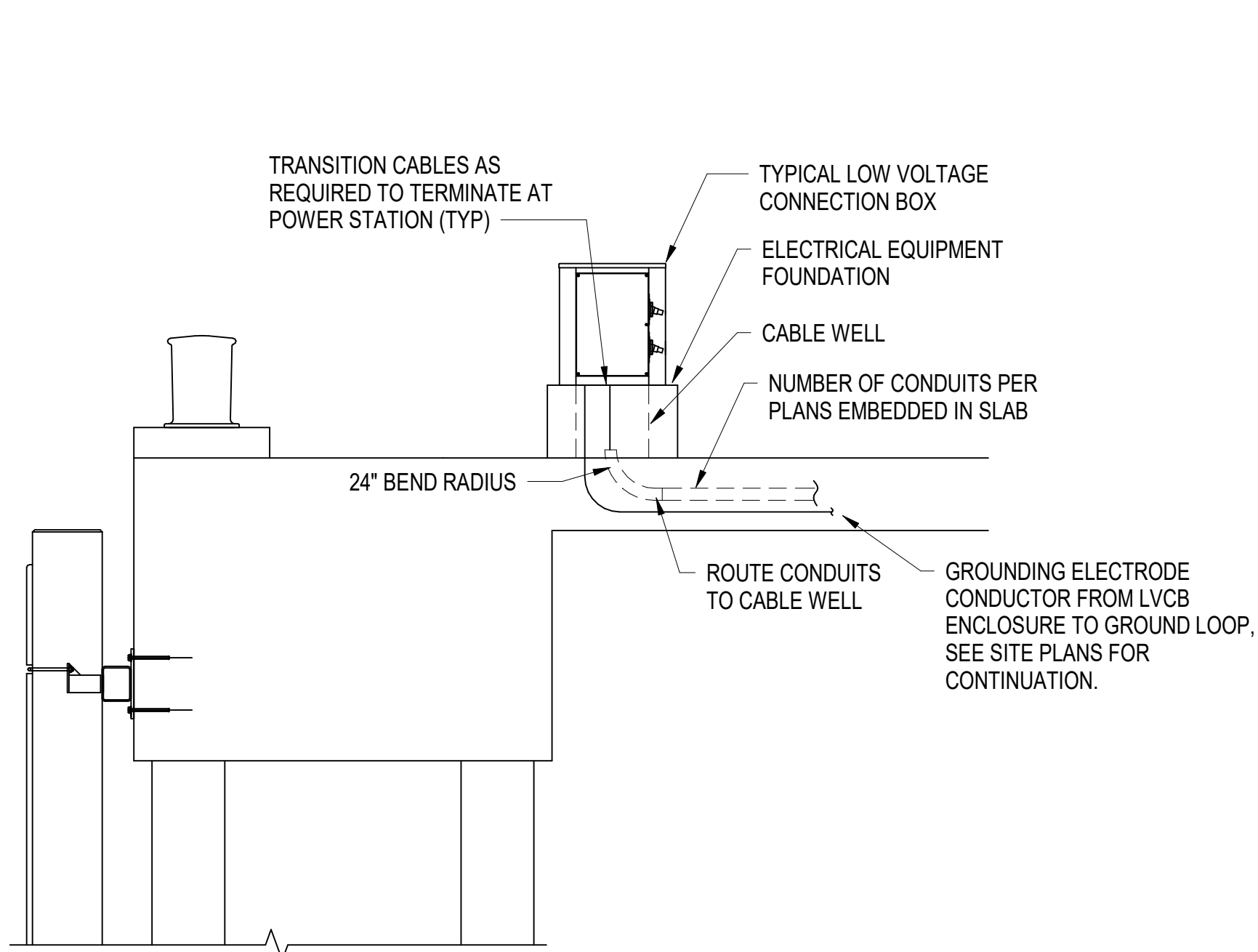
SHEET 393 OF 504

EP116

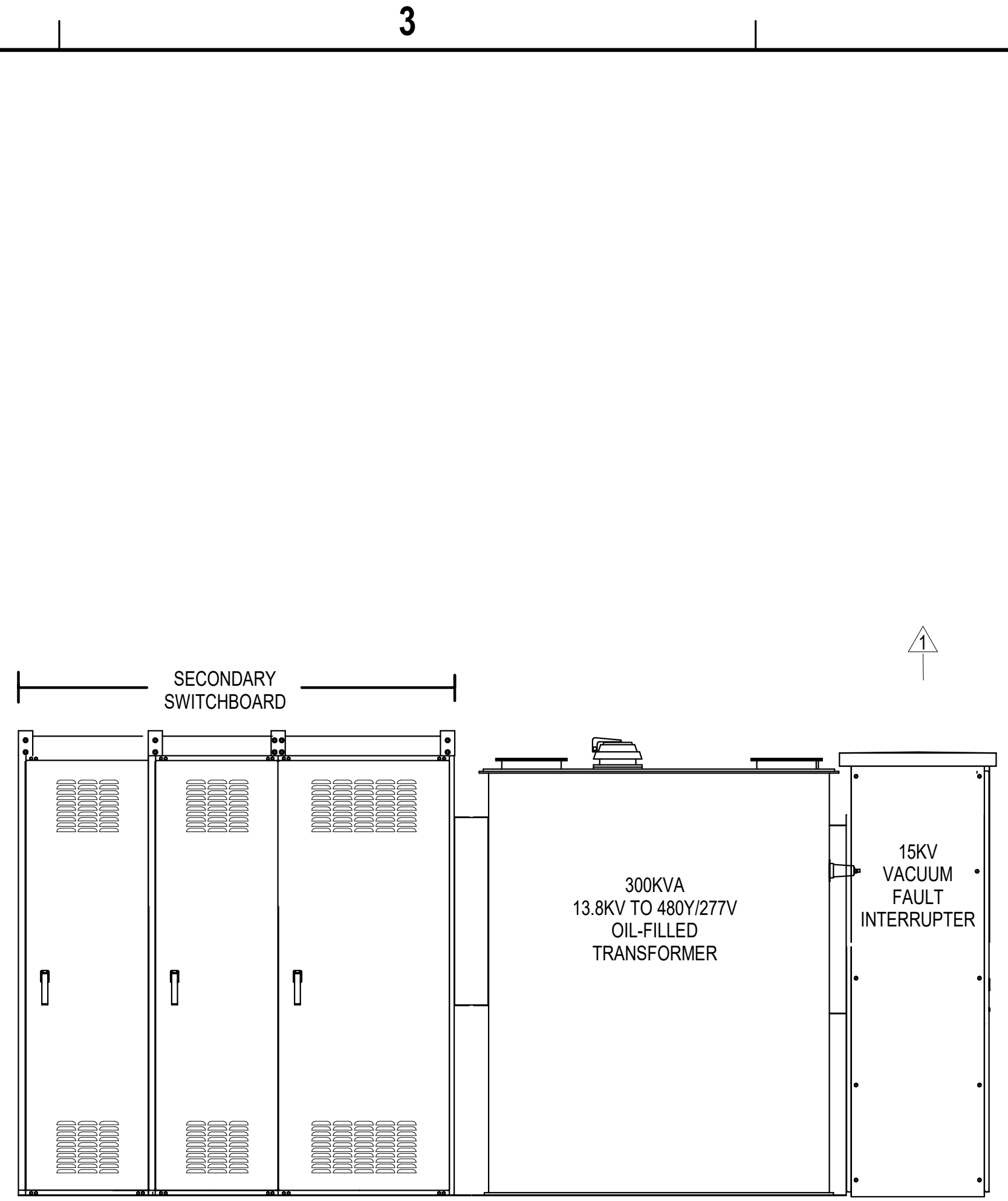
DRAWING REVISION: 25 AUGUST 2020



B1 FLOATING DOCK ELECTRICAL PILLAR
NOT TO SCALE

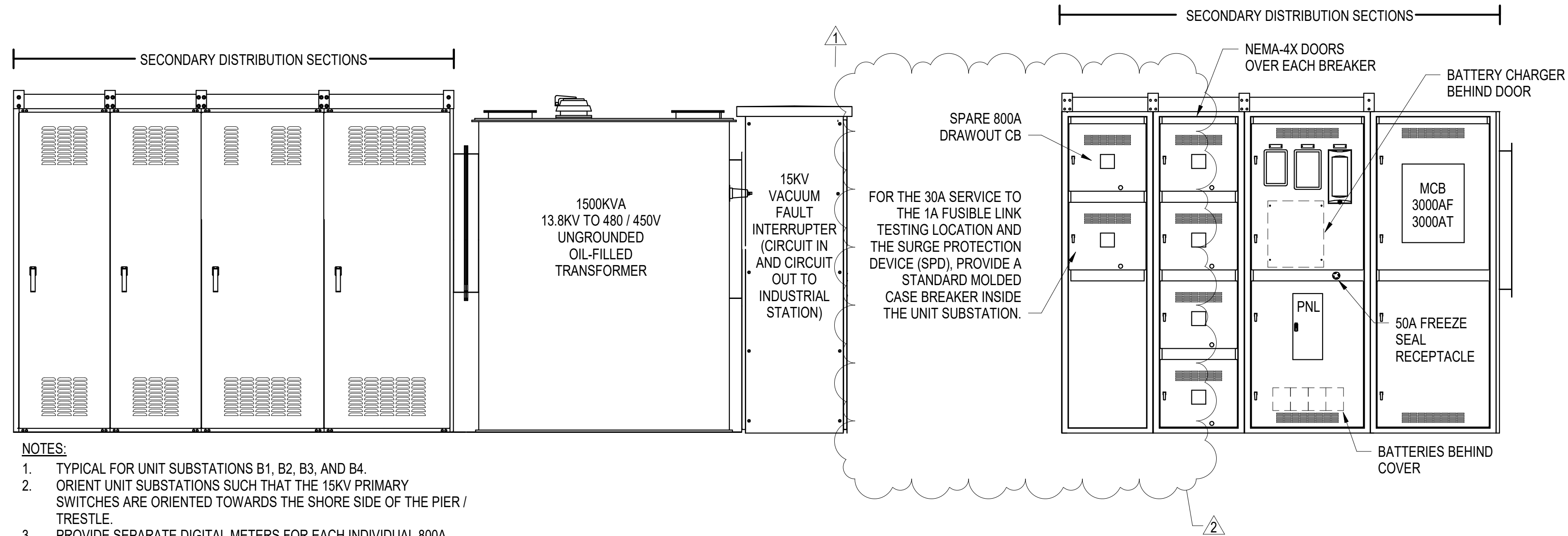


A1 TYPICAL LVCB SECTION
NOT TO SCALE



- NOTES:
1. TYPICAL FOR UNIT SUBSTATIONS IP-1, IP-2, IP-3, AND IP-4.
 2. ORIENT UNIT SUBSTATIONS SUCH THAT THE 15KV PRIMARY SWITCHES ARE ORIENTED TOWARDS THE SHORE SIDE OF THE PIER / TRESTLE.
 3. PRIMARY AND SECONDARY SECTIONS MUST BE FRONT ACCESS ONLY.

B2 TYPICAL INDUSTRIAL UNIT SUBSTATION
NOT TO SCALE



- NOTES:
1. TYPICAL FOR UNIT SUBSTATIONS B1, B2, B3, AND B4.
 2. ORIENT UNIT SUBSTATIONS SUCH THAT THE 15KV PRIMARY SWITCHES ARE ORIENTED TOWARDS THE SHORE SIDE OF THE PIER / TRESTLE.
 3. PROVIDE SEPARATE DIGITAL METERS FOR EACH INDIVIDUAL 800A BREAKER SERVING THE LVCB(S).
 4. PRIMARY AND SECONDARY SECTIONS MUST BE FRONT ACCESS ONLY.

A2 TYPICAL BERTH UNIT SUBSTATION
NOT TO SCALE

APPR	
DATE	06/27/2023
SYN	DESCRIPTION
2	UPDATED UNIT SUBSTATIONS ELEVATION
1	UPDATED UNIT SUBSTATIONS DETAILS

FOR COMMANDER NAVFAC

ACTIVITY

Timothy Calohan, PE,
NOAA Senior Project Manager

SATISFACTORY TO DATE 04OCT2022

DES JR DRW BG CHK JC

PM/DW RS/RC

BRANCH MANAGER JAS

CHIEF ENGINEER EJA

FIRE PROTECTION DSN

NAVAL FACILITIES ENGINEERING SYSTEMS COMMAND
NAVAL FACILITIES ENGINEERING SYSTEMS COMMAND - MID-ATLANTIC
NAVAL STATION NORFOLK - NORFOLK, VA
NAVAL STATION NEWPORT
NOAA OMAO SHIP & SUPPORT FACILITY RELOCATION
NEWPORT, RHODE ISLAND

POWER DETAILS

SCALE: AS NOTED

PROJECT NO.: 1562331

CONSTR. CONTR. NO. N4008523R2527

NAVFAC DRAWING NO. 12874280

SHEET 404 OF 504

EP503

DRAWING REVISION: 25 AUGUST 2020

