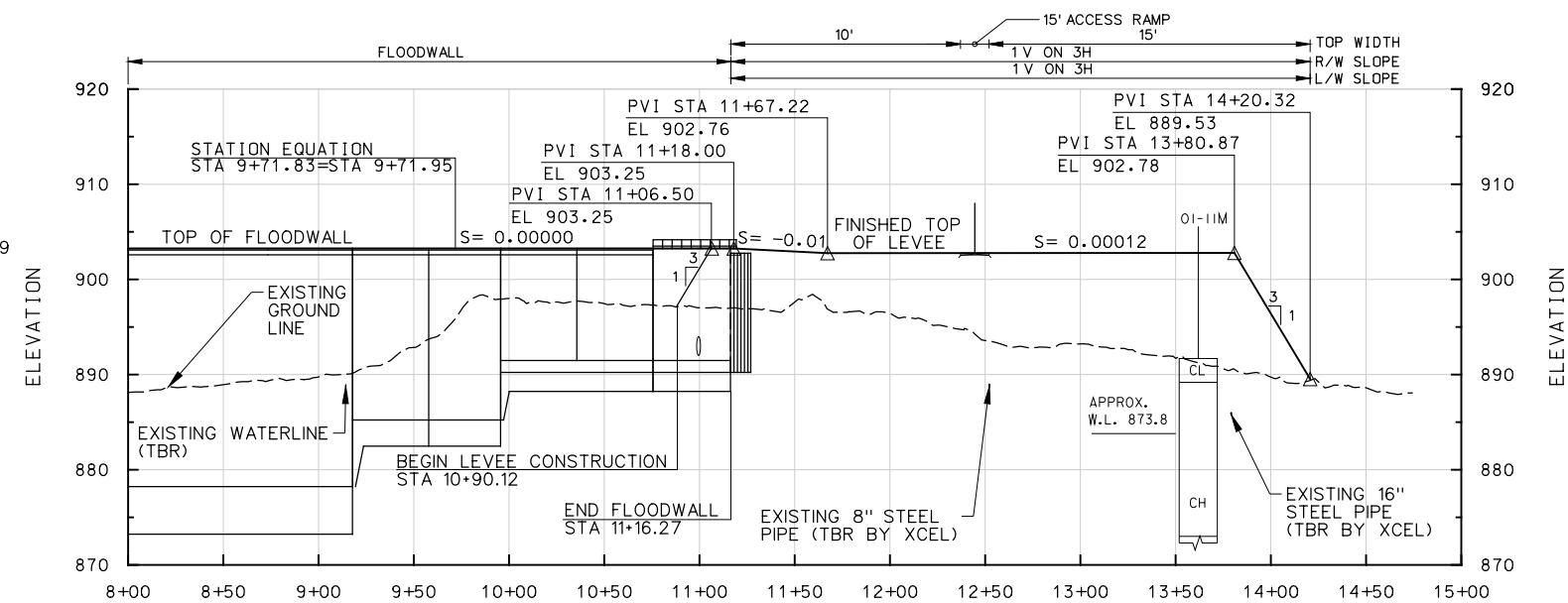
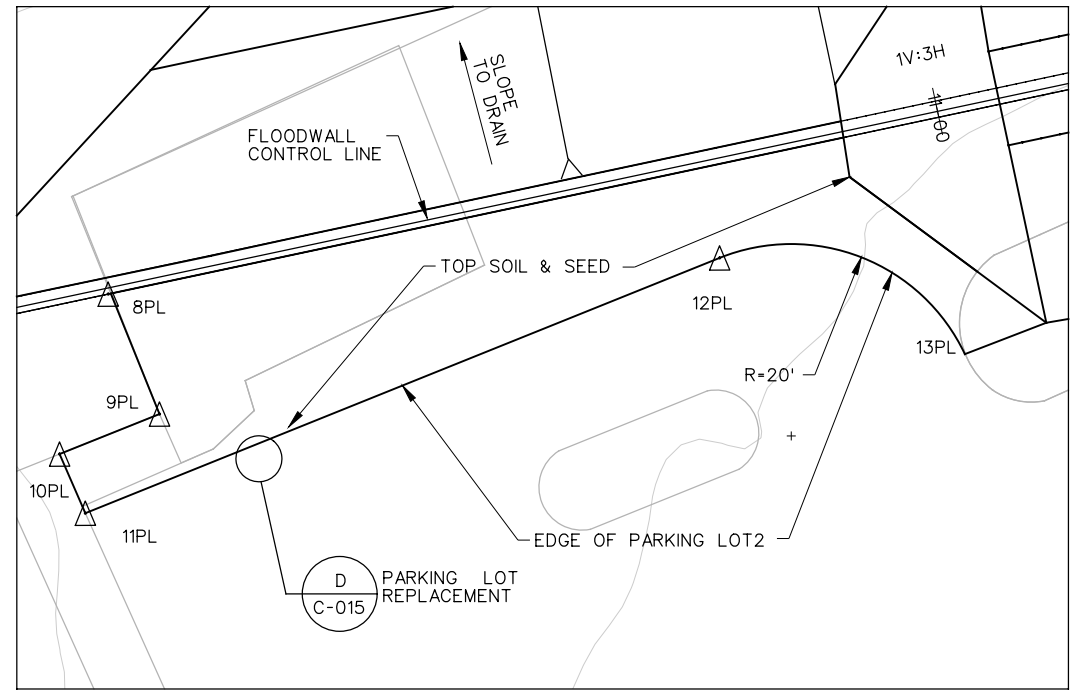


FLOODWALL & LEVEE PLAN

0 50' 100'
SCALE: 1"=50'



FLOODWALL & LEVEE PROFILE



I
PARKING LOT 2
10' 5' 0' 10'
SCALE: 1"=10'-0"

PARKING LOT 2
CONTROL DATA

POINT ID	STATION	OFFSET (FT)
8PL	10+11.78	0.63 (RIGHT)
9PL	10+14.12	13.96 (RIGHT)
10PL	10+03.07	15.87 (RIGHT)
11PL	10+04.41	22.46 (RIGHT)
12PL	10+74.61	10.21 (RIGHT)
13PL	10+97.52	25.34 (RIGHT)

NOTES

1. NEW WATER LINE SHALL PROVIDE SERVICE TO PICNIC SHELTER SPIGOT.
2. XCEL ENERGY SHALL REMOVE AND REPLACE THE 8" & 16" STEEL GAS LINES. CONTRACTOR SHALL VERIFY NEW ALIGNMENT AND DEPTH PRIOR TO LEVEE PLACEMENT.

REFERENCES

1. ALIGNMENT CONTROL
2. DEMOLITION & REMOVAL PLAN
3. STORM SEWER PLAN
4. STORM SEWER PROFILE
5. STORM SEWER PIPING SCHEDULE
6. PAVEMENT, PATIO & CURB DETAILS
7. FLOODWALL
10. FENCE

SHT. REF. NO.

- C-001
- C-005
- C-011
- C-014
- C-013
- C-015
- S-001
- S-019

FOR REFERENCE ONLY



US Army Corps
of Engineers
St. Paul District

Rev.	Date	By	Description	Appr.
1	AS-BUILT	AS OF MAY 2009	AS-BUILT	

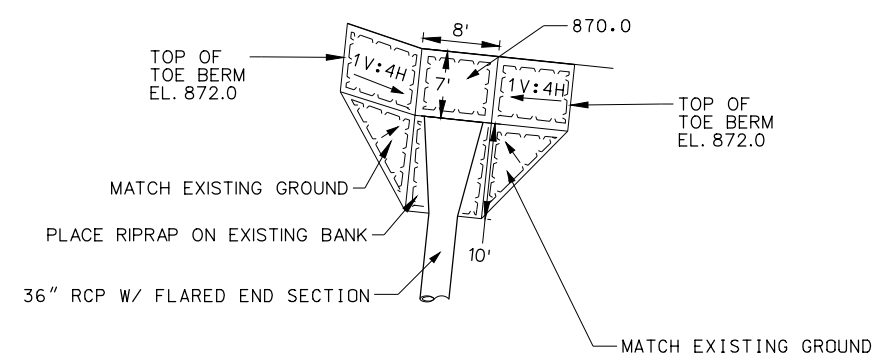
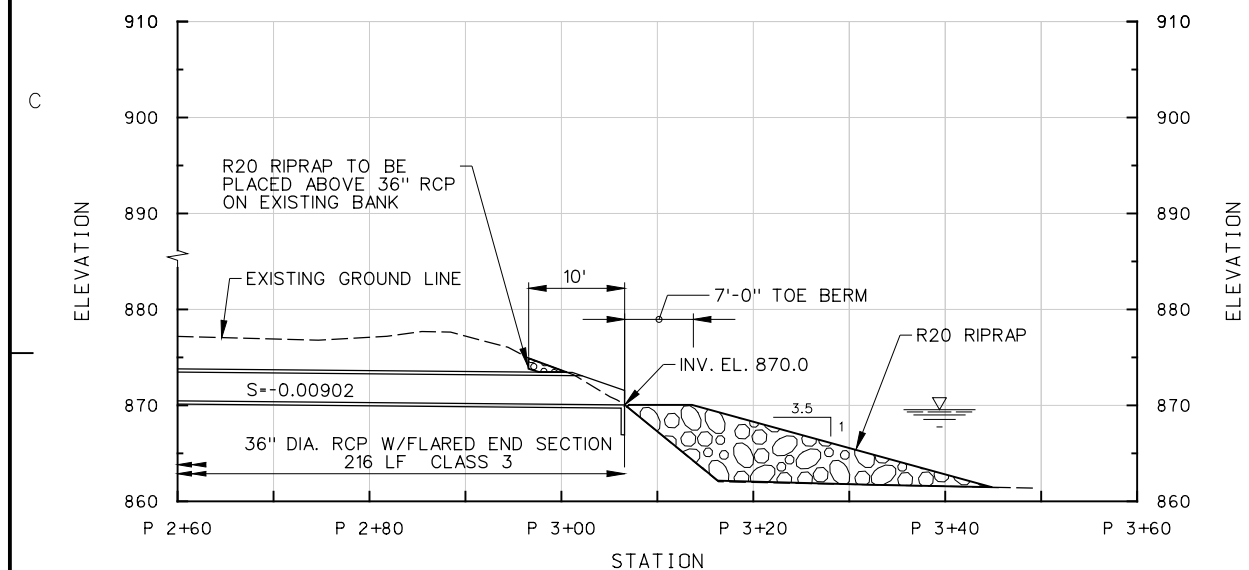
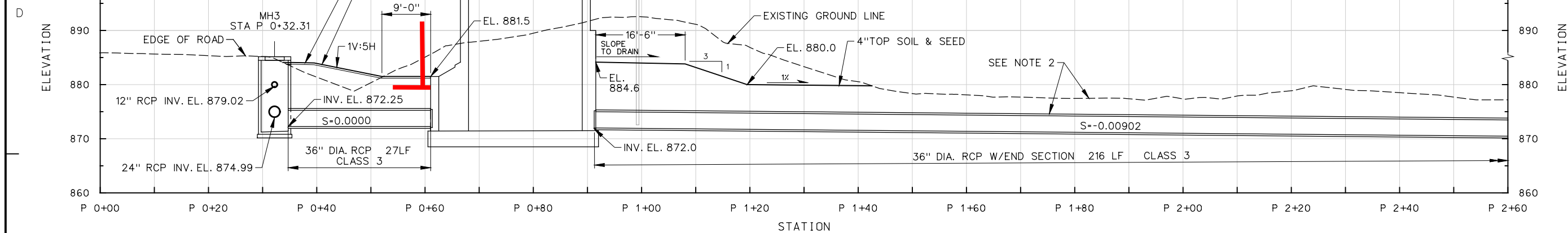
Designed by:	Date:	Rev.
EPP	APRIL 2007	
Dwn by:	Solicitation No.:	
EPP	W92ES-07-R-0009	
Authority:	Drawing Number:	
WORK FOR OTHERS	R-FM-64/41	
File Name:	AC004_FGVA_SIPN_C-64041.DGN	
Plot Scale:	AS SHOWN	
Plot Date:		

CONSTRUCTION DRAWINGS
FARGO VA MEDICAL CENTER - FLOOD CONTROL
RED RIVER OF THE NORTH
FARGO, NORTH DAKOTA

SHEET
PLAN, PROFILE & DETAIL
STA. 8+00 THRU STA. 16+00

Sheet
reference
number:
C-004
Sheet of

AS-BUILT



NOTES:

REFERENCES

SHT. REF. NO.

FOR REFERENCE ONLY

CONSTRUCTION DRAWINGS FARGO VA RIVER OF THE NORTH FARGO, NORTH DAKOTA		CONTROL SHEET FARGO, NORTH DAKOTA	
SITE DESIGN PIPE PROFILES MANHOLE 3 - PUMP STATION		SHEET C-012	
DEPARTMENT OF THE ARMY ST. PAUL DISTRICT CITY OF ENGINEERS ST. PAUL, MINNESOTA		DESIGNED BY: EPP DWN BY: EPP AUTHORITY: ECONOMIC ACT CITY OF FARGO COORDINATE SYSTEM US SURVEY FT Vertical Coordinate System: MSL NGVD 1988 (ADJ)	
DATE: APRIL 2007 SOLICITATION NO: W912ES-07-R-0009 DRAWING NUMBER: R-FM-64/049		REV. AS-BUILT AS OF MAY 2009	
SYMBOL DATE APPROV.		PLOT SCALE: AS SHOWN PLOT DATE:	



US Army Corps
of Engineers
St. Paul District

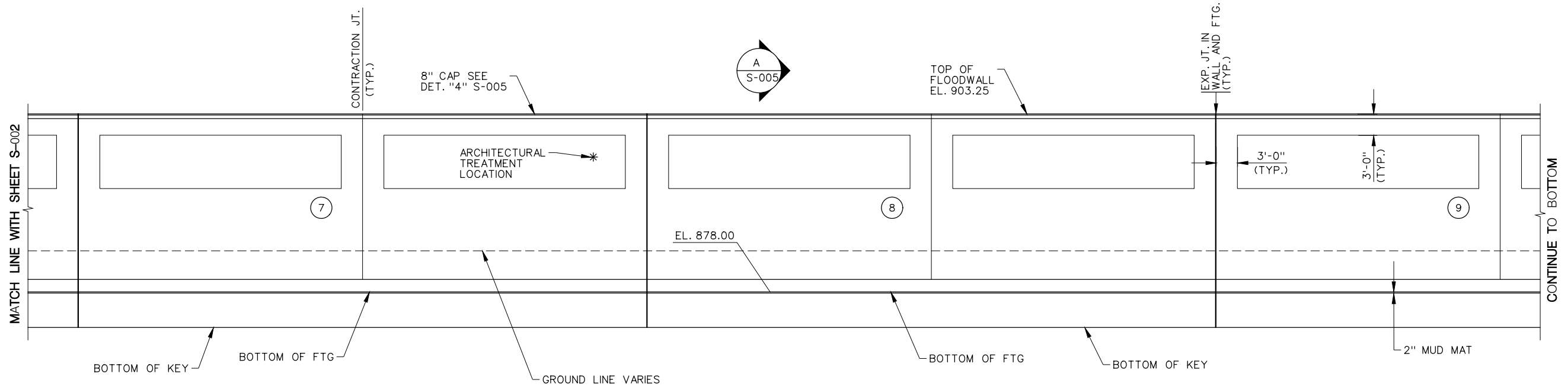
Rev.	Date	Designed by:	Cad by:	Solicitation No.:	Dyn by:	Drawing Number:	File Name:	Plot Date:	Symbol	Description	Date	Appr.
	APRIL 2007	TSF	EW	W92ES-07-R-009	NR	R-FM-64/055	WORK FOR OTHERS					
							AS-BUILT AS OF MAY 2009					

Rev.	Date	Designed by:	Cad by:	Solicitation No.:	Dyn by:	Drawing Number:	File Name:	Plot Date:	Symbol	Description	Date	Appr.
	APRIL 2007	TSF	EW	W92ES-07-R-009	NR	R-FM-64/055	WORK FOR OTHERS					
							AS-BUILT AS OF MAY 2009					

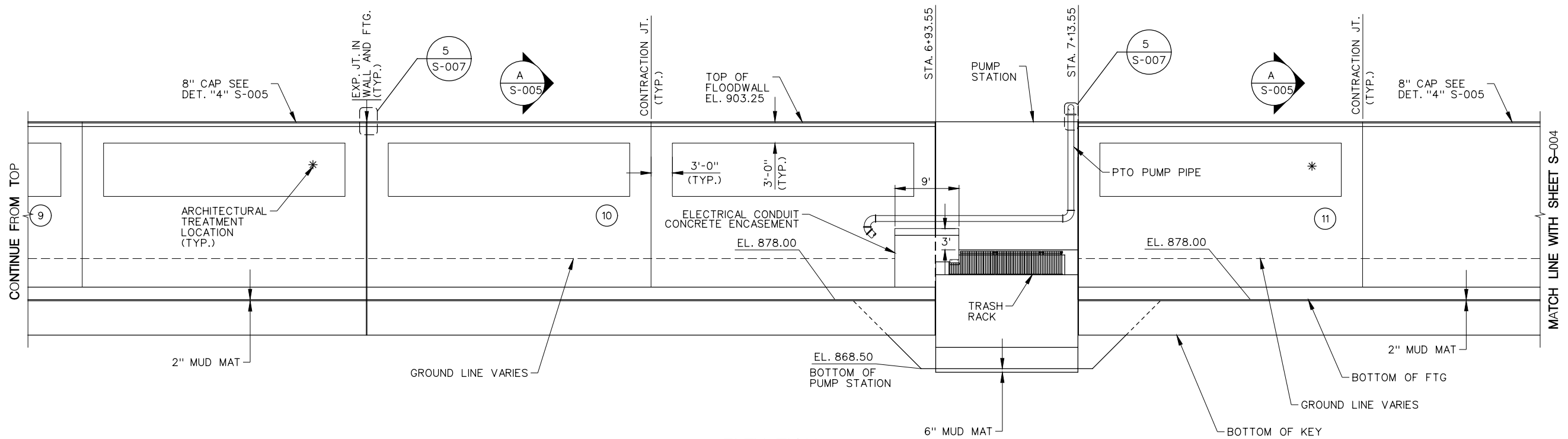
CONSTRUCTION DRAWINGS
FARGO VA MEDICAL CENTER - FLOOD CONTROL
RED RIVER OF THE NORTH
FARGO, NORTH DAKOTA
FLOOD CONTROL
FLOODWALL
ELEVATION MONOLITHS 7 THRU 11

Sheet
reference
number:
S-003
Sheet . of .

AS-BUILT

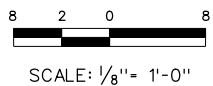


ELEVATION
FLOODWALL
LOOKING AT FRONT FACE
SCALE: 1/8" = 1'-0"



ELEVATION
FLOODWALL
LOOKING AT FRONT FACE
SCALE: 1/8" = 1'-0"

FOR REFERENCE ONLY



RIVER SIDE
BACK FACE/WET SIDE

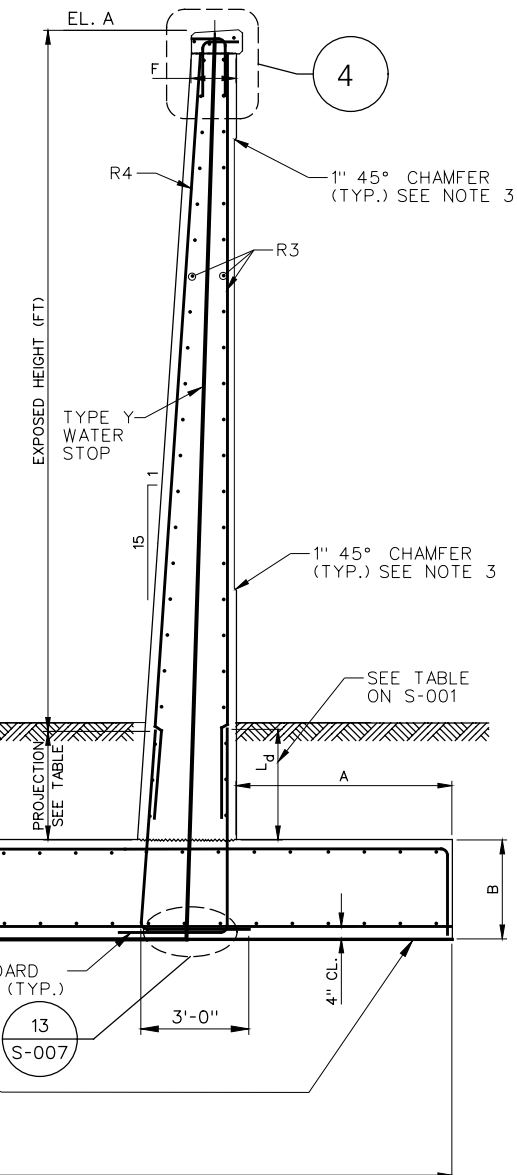
LAND SIDE
FRONT FACE/DRY SIDE

T-WALL SCHEDULE

T-WALL SCHEDULE													
WALL TYPE (EXPOSED HEIGHT)	A	B	C	F	I	J	R1	R2	R3	R4			R5
										DOWEL	PROJECTION	VERTICAL	
19'	6'-0"	2'-9"	36'-0"	1'-3"	2'-9"	5'-6"	*9 @ 6"	*7 @ 12"	*7 @ 12"	*9 @ 6"	5'-10"	*9 @ 6"	*9 @ 12"
12'	3'-9"	1'-9"	26'-0"	1'-3"	1'-9"	2'-9"	*9 @ 6"	*6 @ 12"	*6 @ 12"	*9 @ 6"	5'-10"	*9 @ 6"	*6 @ 6"
7'	3'-9"	1'-3"	13'-0"	1'-3"	1'-3"	1'-9"	*9 @ 12"	*5 @ 12"	*5 @ 12"	*9 @ 12"	5'-10"	*9 @ 12"	*5 @ 6"

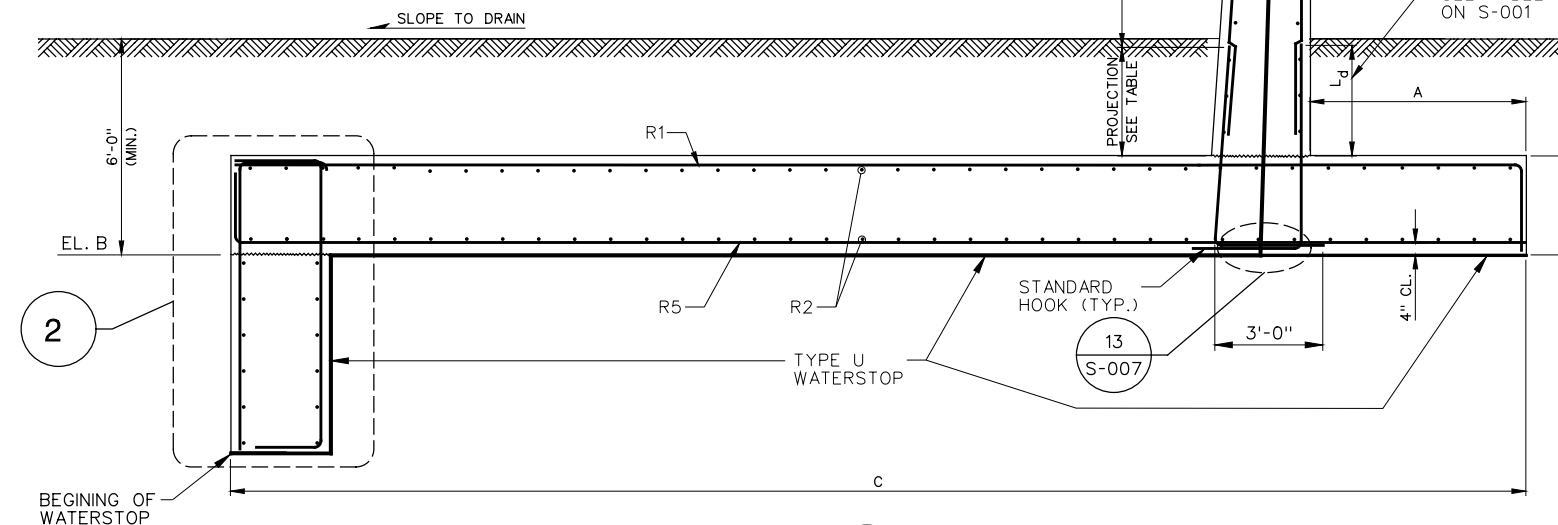
WALL REACHES

WALL REACHES				
STA. LOCATION	WALL LENGTH	TOP OF WALL EL. A	BOT. OF FTG. EL. B	WALL TYPE (EXPOSED HEIGHT)
G0+00.00 TO G0+93.68	93.68'	903.25	884.00'	12'-0"
G0+93.68 TO G6+93.55	599.87'	903.25	878.00'	19'-0"
G7+13.55 TO G9+14.63	201.20'	903.25	878.00'	19'-0"
G9+14.63 TO G9+92.51	77.76'	903.25	884.00'	12'-0"
G9+92.51 TO G11+16.27	123.76'	903.25	890.00'	7'-0"



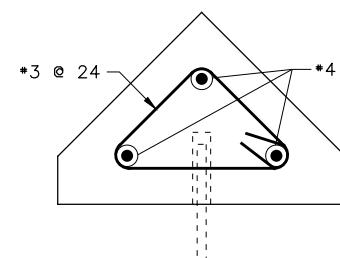
NOTES:

1. ALL SECTIONS REQUIRE A MINIMUM COVER OF 6'-0" TO THE BOTTOM OF FOOTING FOR FROST PROTECTION. RE-GRADE AND BACKFILL AREAS WHERE REQUIRED. SEE PROFILE SHEETS FOR FINAL GROUND LINE.
2. FOOTING IS TO BE PLACED DIRECTLY ON NATURAL, COHESIVE SOIL. GRANULAR MATERIAL IS NOT ALLOWED TO BE PLACED UNDER THE FOOTING AND IF ENCOUNTERED DURING EXCAVATION, IT SHALL BE REMOVED.
3. 1" 45° CHAMFER FOR RECESSED PANEL ON WALL MONOLITHS AS SHOWN ON SHEETS S-002 AND S-003.



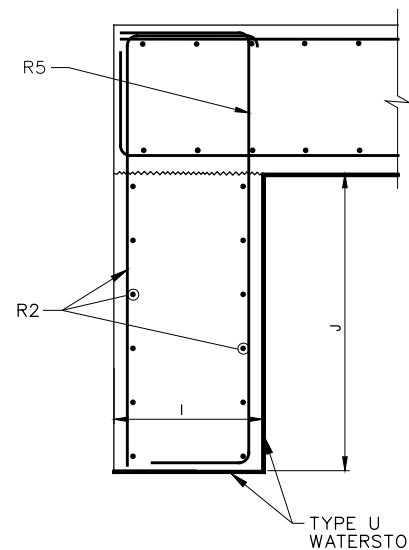
SECTION

A	SECTION
S-001	TYPICAL T-WALL
S-002	SCALE: NONE
S-003	
S-004	



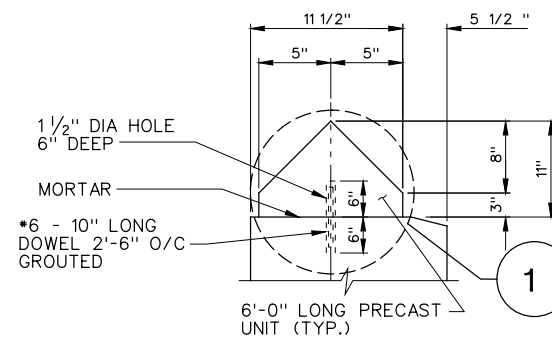
DETAIL

SAFETY CAP REINF.
SCALE: NONE



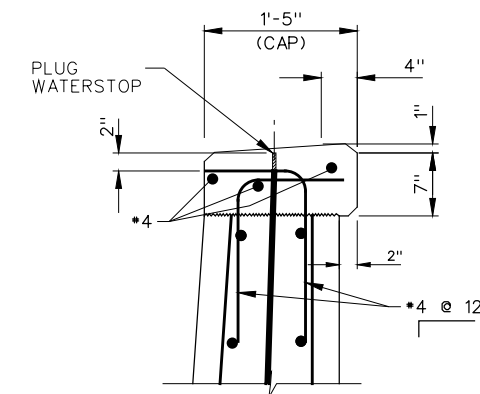
DETAIL

TYPICAL T-WALL
SCALE: NONE



DETAIL

SAFETY CAP
SCALE: NONE



DETAIL

TYPICAL T-WALL CAP
SCALE: NONE

FOR REFERENCE ONLY