

A

B

C

3

100% FLOOR PAN W/ TROUGH ITEM #26 DRAWING

NOT TO SCALE

BASIS OF DESIGN MANUFACTURER'S CUT SHEET

D

E

F

1

EXISTING FLIGHT TYPE DISHWASHER ITEM #5 DRAWING

NOT TO SCALE

CONSULTANT



747 CONKLIN ROAD,
BINGHAMTON, NY 13903
W: www.cckc.net
E: mbeard
T: 607-217-5389

ARCHITECT/ENGINEER OF RECORD



STAMP

Office of
Construction
and Facilities
Management

U.S. Department
of Veterans Affairs

Drawing Title
FOOD SERVICES DISHWASHER EXIST. SOILED
TABLE, POWER SOAK SINK AND FLOOR PAN
DRAWING

Approved: Project Director

Phase
BID DOCUMENTS SUBMITTAL

FULLY SPRINKLERED

VA CONTRACT NO: 36C24519C0171

Project Title
RENOVATE/UPGRADE NFS KITCHEN
- BUILDING 500 BASEMENT

Location
510 BUTLER AVENUE, MARTINSBURG, WV 25405

Issue Date
11/24/21

Checked
MDB

Drawn
MDB

Project Number
613-19-103
Building Number
500

Drawing Number
QF-5

A

B

C

D

E

F

11/24/2021 11:44:59 AM

C:\Users\dmendes\Documents\18-133_Architectural_Central_mf\electrical\UPAS.rvt

A

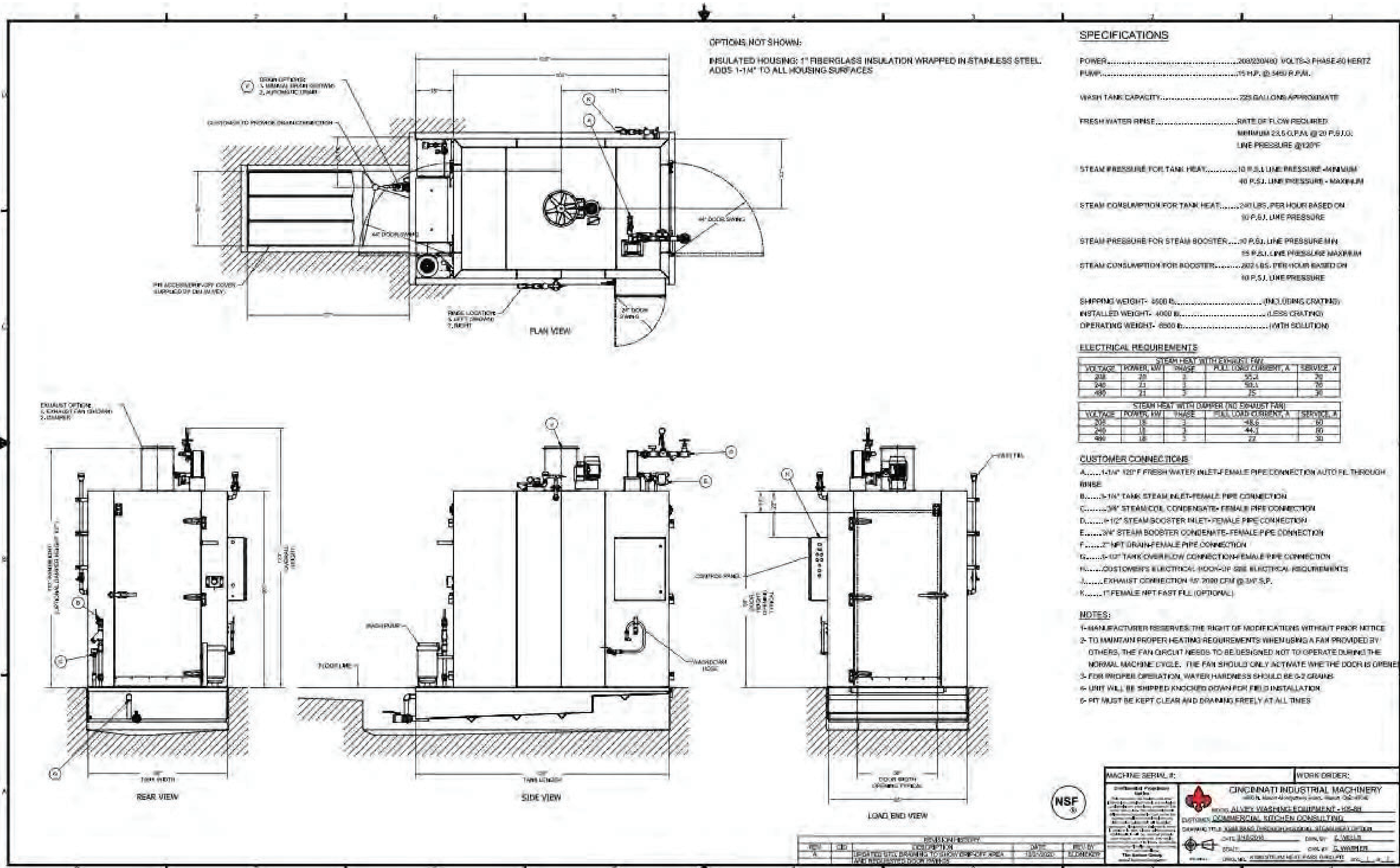
B

C

D

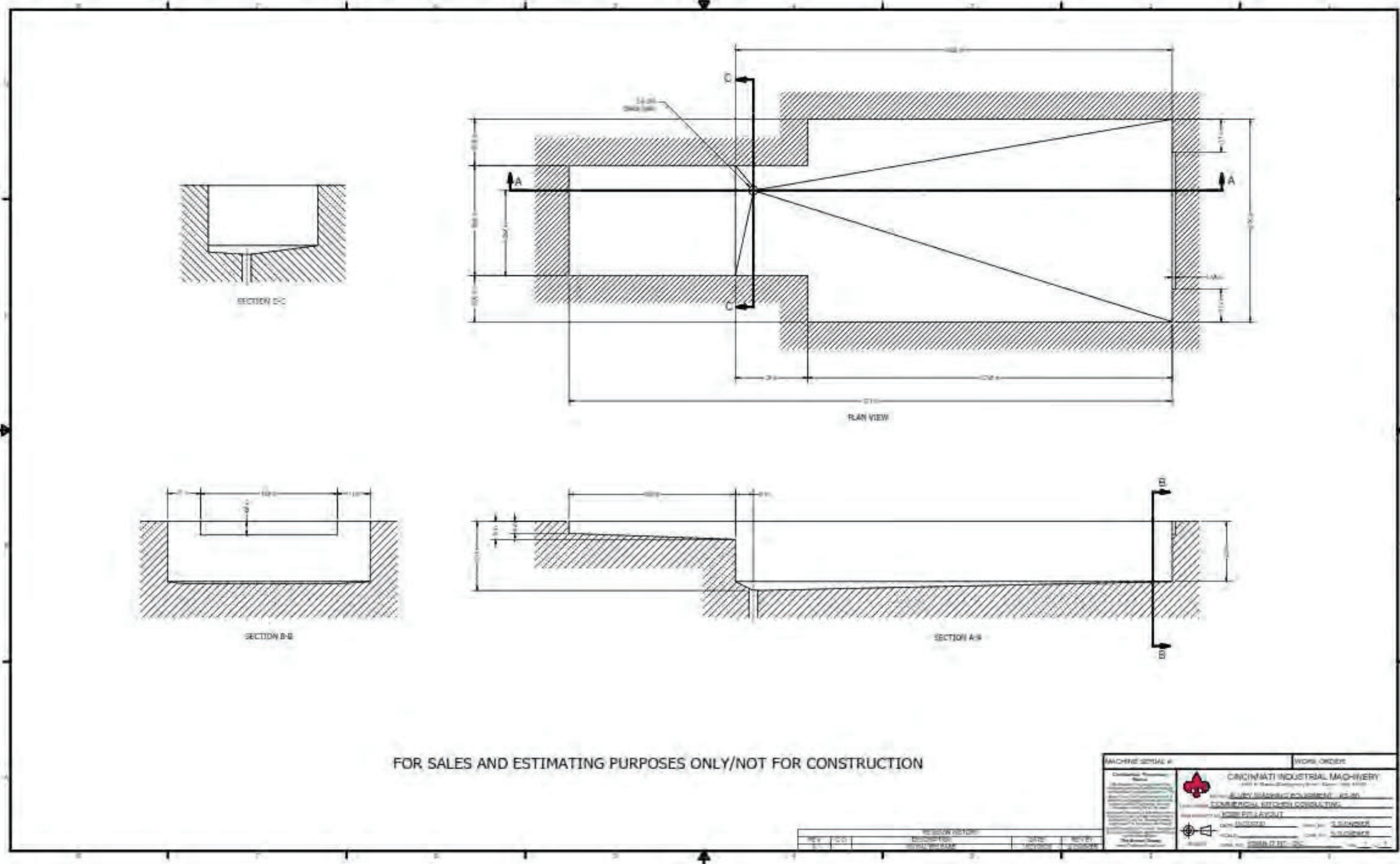
E

F



1 100% CART WASHER ITEM #3 DRAWING
NOT TO SCALE

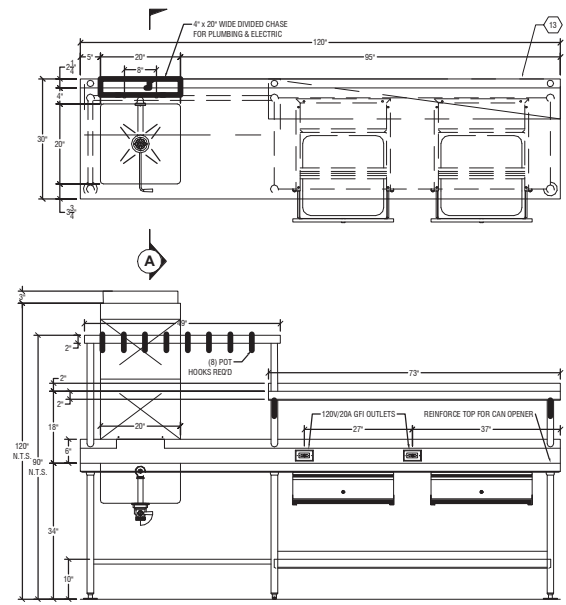
BASIS OF DESIGN MANUFACTURER'S CUT SHEETS



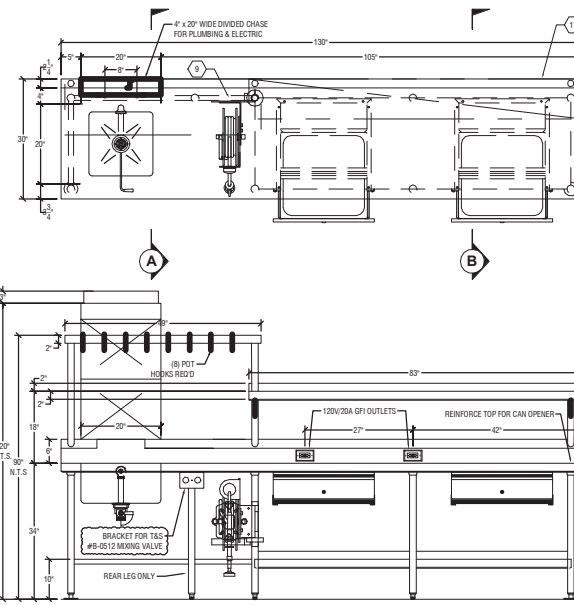
2 100% CART WASHER ITEM #3 DETAIL DRAWING
NOT TO SCALE

BID DOCUMENTS SUBMITTAL		CONSULTANT		ARCHITECT/ENGINEER OF RECORD		STAMP		Office of Construction and Facilities Management		Drawing Title FOOD SERVICES EQUIPMENT CART WASHER ITEM #3 DRAWING		Phase BID DOCUMENTS SUBMITTAL		Project Title RENOVATE/UPGRADE NFS KITCHEN - BUILDING 500 BASEMENT		Project Number 613-19-103	
100% CONSTRUCTION DOCUMENTS SUBMISSION		11/24/2021		747 CONKLIN ROAD, BINGHAMTON, NY 13903		Bancroft Architects + Engineers		VA		Approved: Project Director		FULLY SPRINKLERED		Location 510 BUTLER AVENUE, MARTINSBURG, WV 25405		Building Number 500	
95% CONSTRUCTION DOCUMENTS SUBMISSION		07/23/2021		W: www.ckc-llc.net		BANCROFT ARCHITECTS + ENGINEERS		U.S. Department of Veterans Affairs						Issue Date 11/24/21		Drawing Number QF-6	
60% DESIGN DEVELOPMENT SUBMISSION		02/12/2021		E: mberard										Checked MDB			
30% SCHEMATIC DESIGN SUBMISSION		09/11/2020		T: 607-217-5389										Drawn MDB			
Revisions:		Date:															

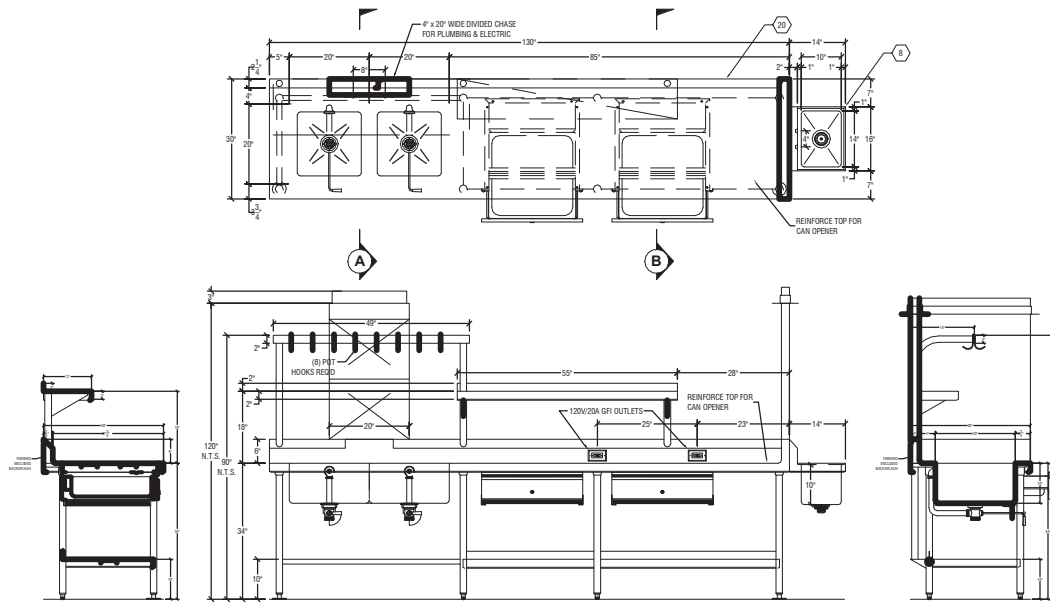
A



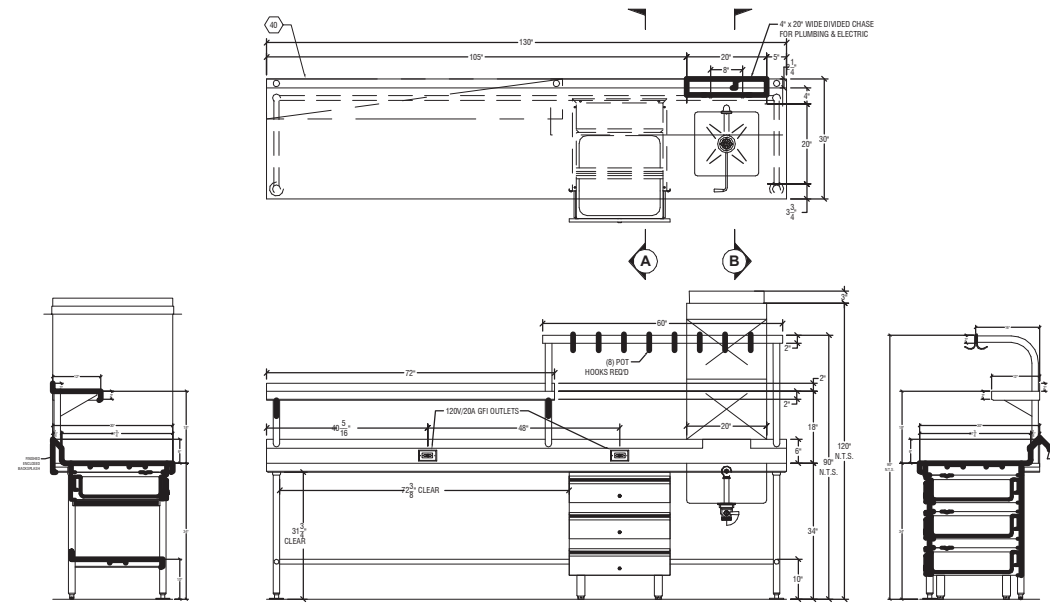
ITEM# 13 WORKTABLE W/SINK



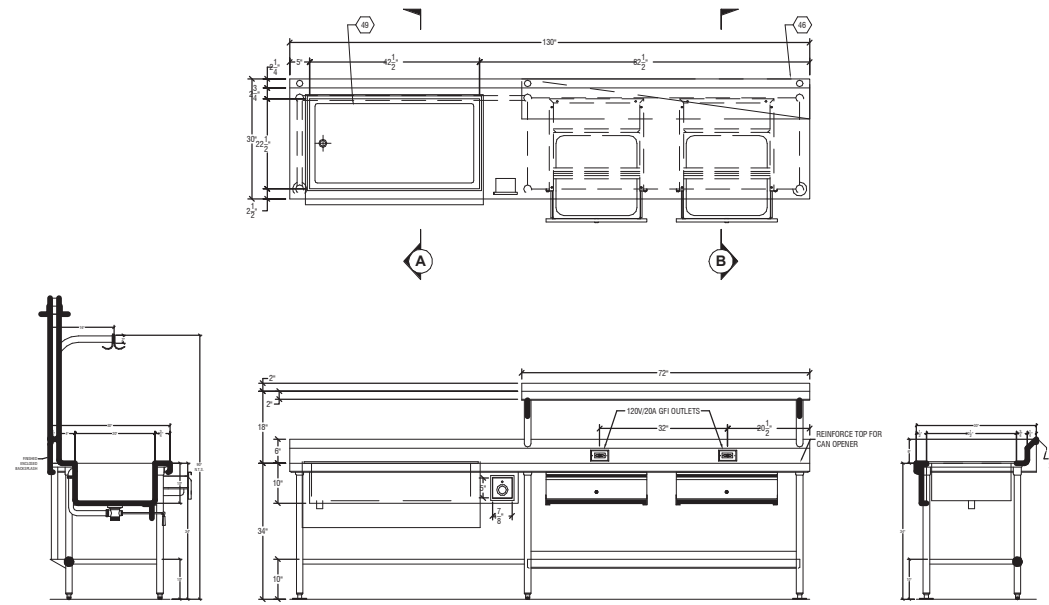
ITEM# 17 WORKTABLE W/SINK



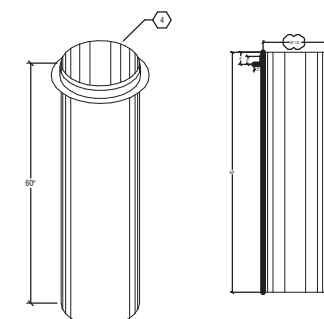
ITEM# 20 WORKTABLE W/ 2 SINKS



ITEM# 40 BAKING WORKTABLE W/SINK



ITEM# 46 WORKTABLE



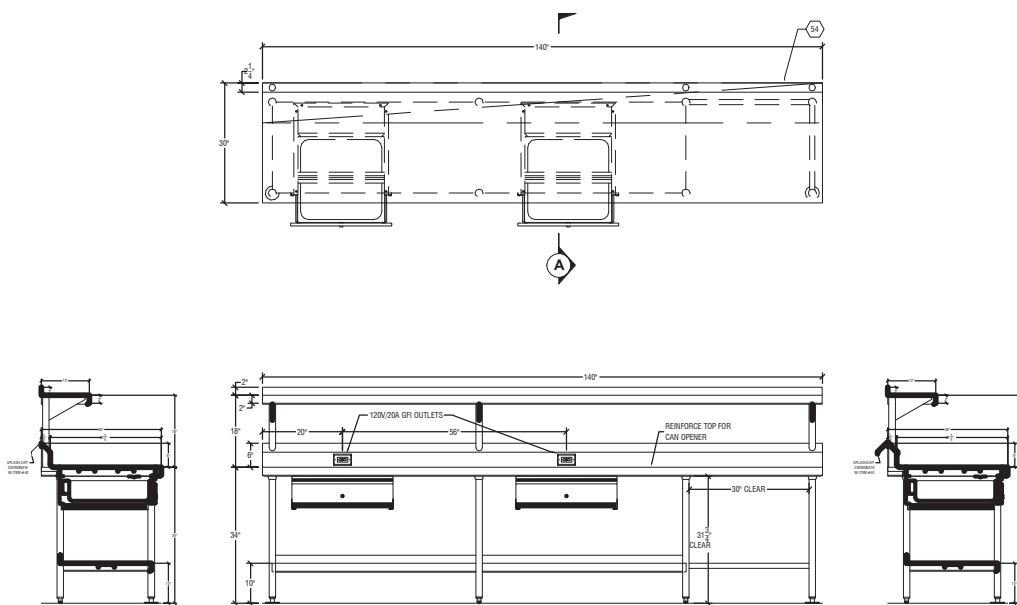
ITEM# 4 VENT DUCT

B

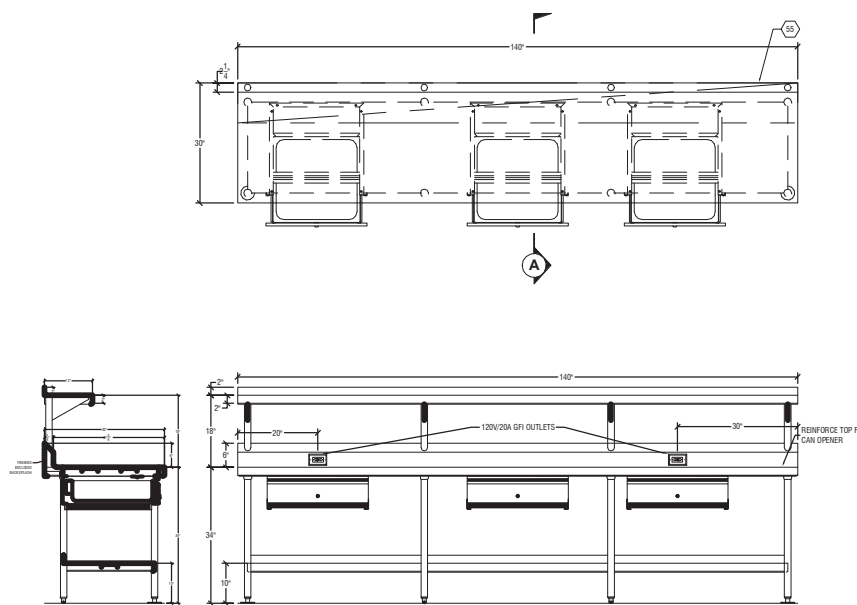
B

C

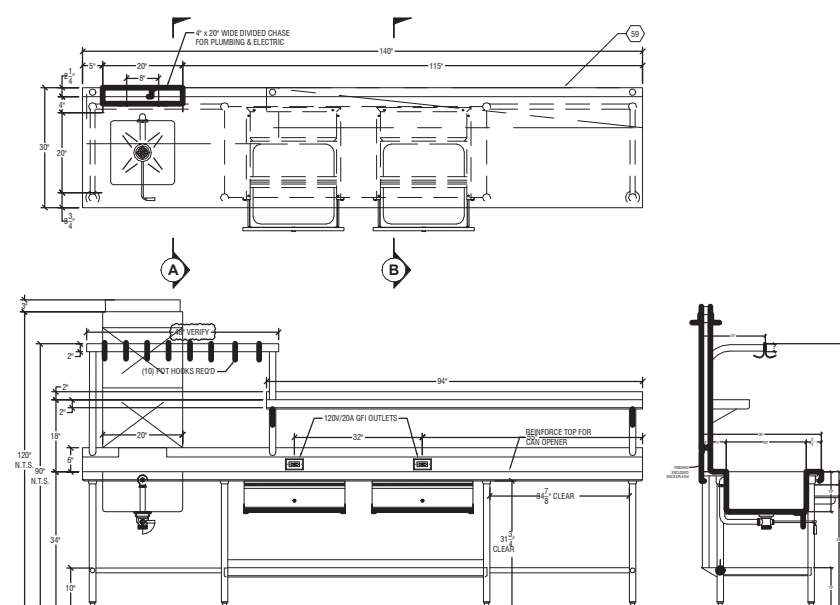
C



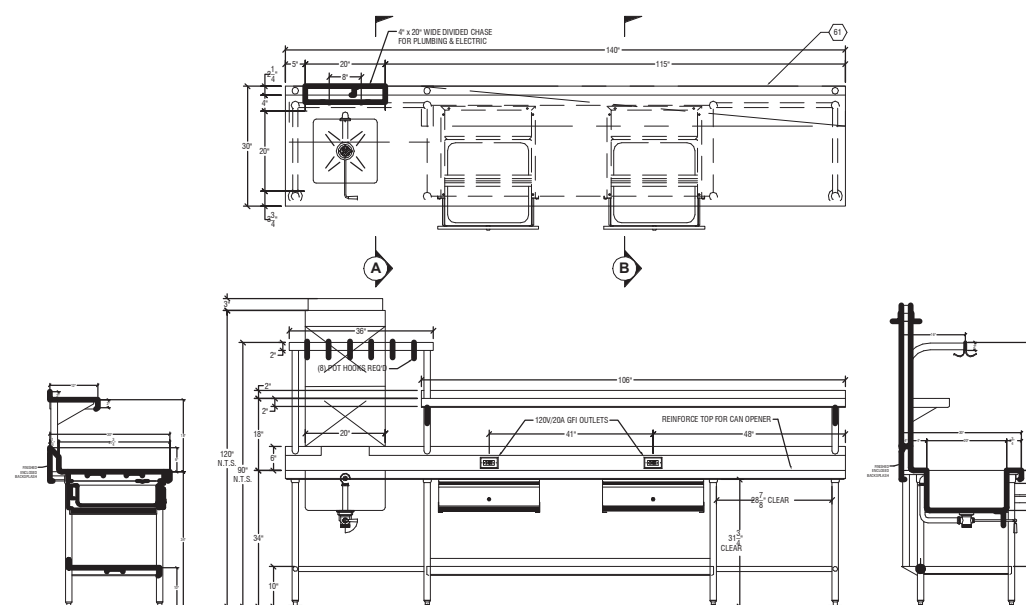
ITEM# 54 WORKTABLE



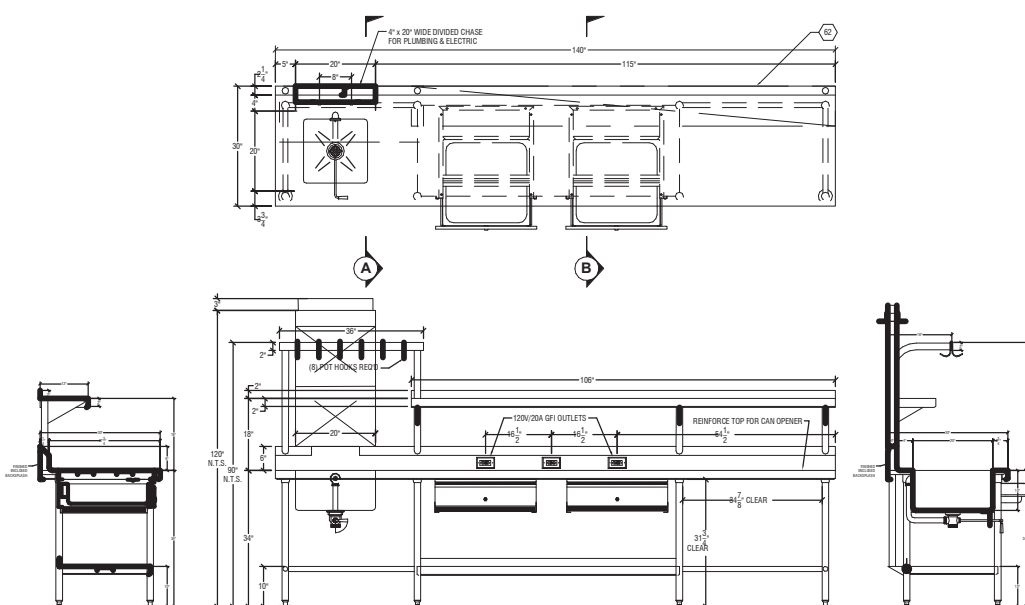
ITEM# 55 WORKTABLE



ITEM# 59 WORKTABLE W/SINK



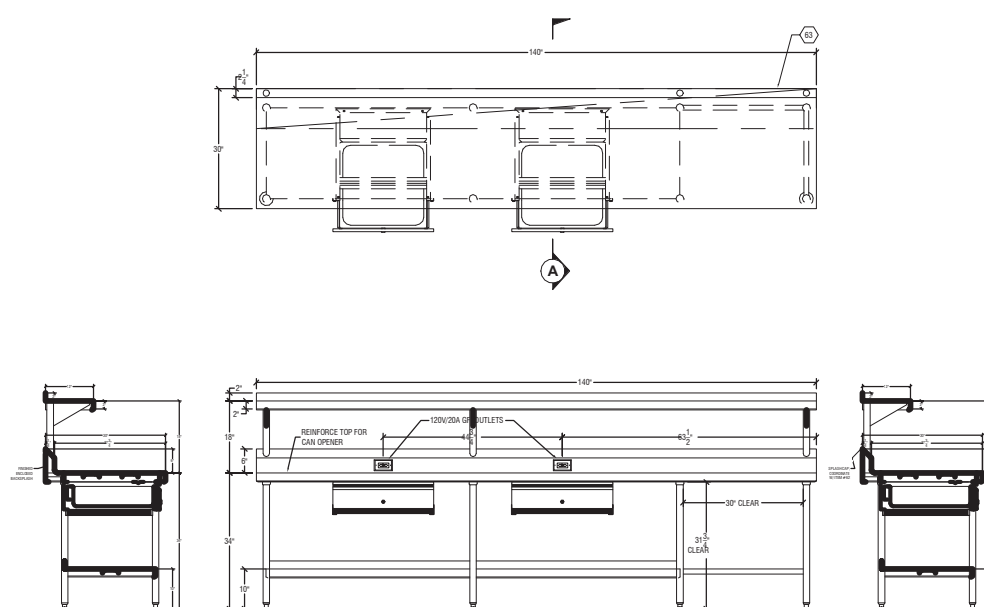
ITEM# 61 WORKTABLE W/SINK



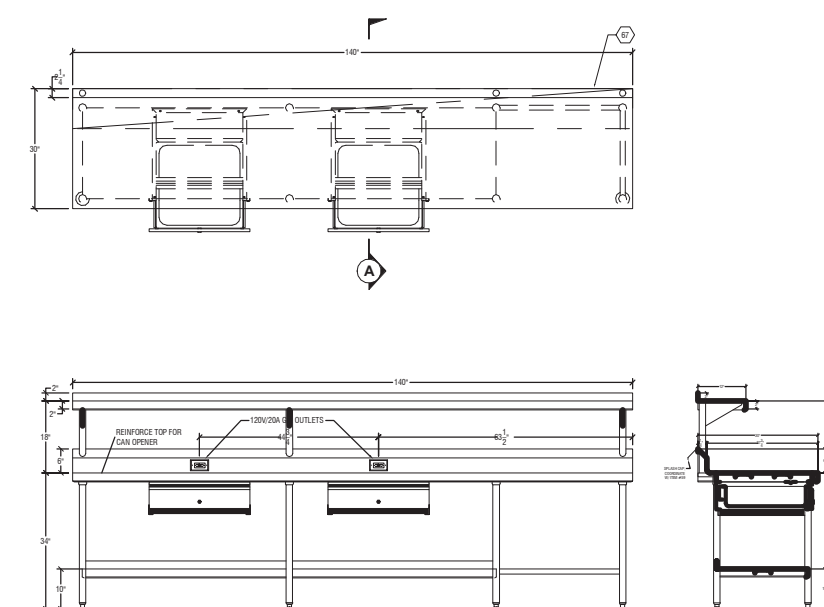
ITEM# 62 WORKTABLE W/SINK

D

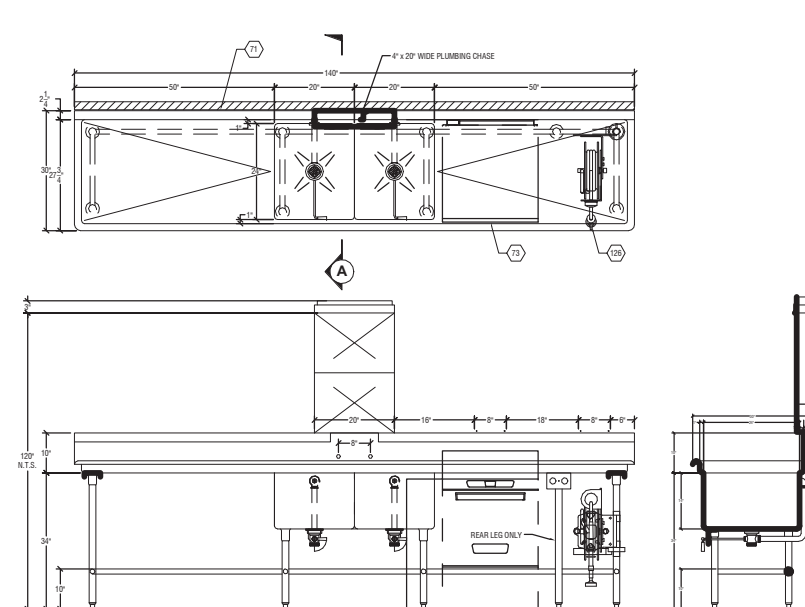
D



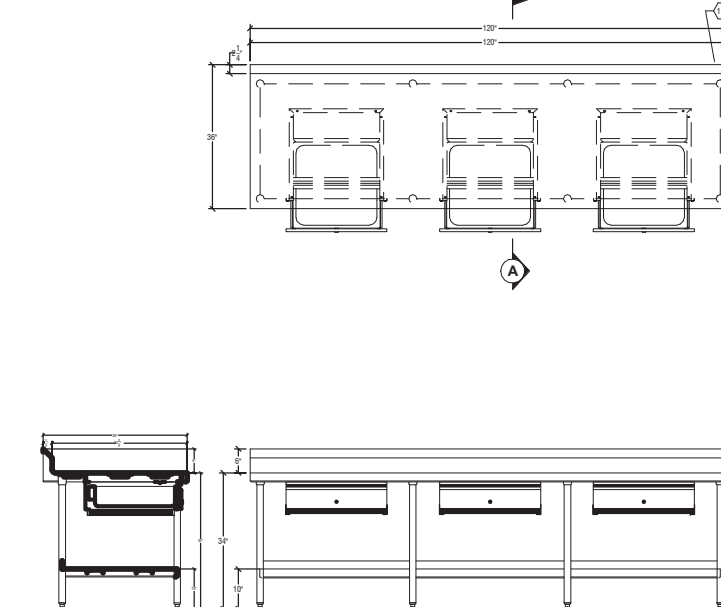
ITEM# 63 WORKTABLE



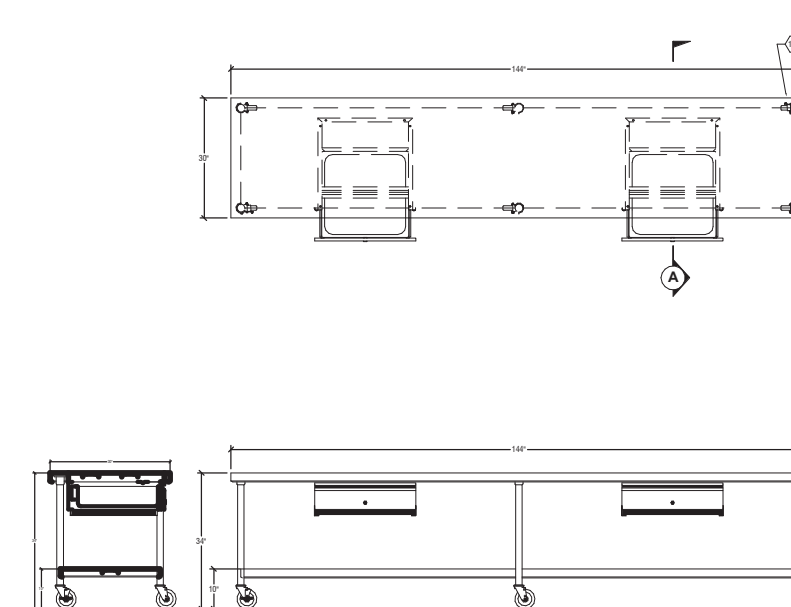
ITEM# 67 WORKTABLE



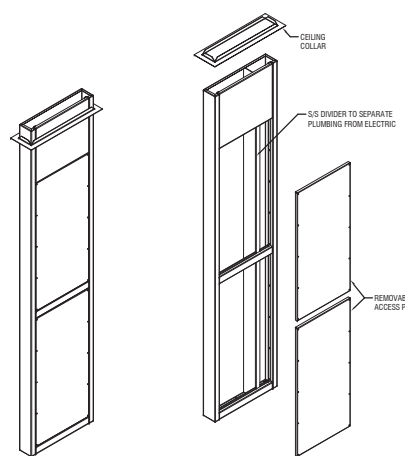
ITEM# 71 PREP TABLE W/2 SINKS



ITEM# 115 WORKTABLE



ITEM# 123 MOBILE TRAY ASSEMBLY STATION



TYPICAL CHASE DETAIL (4' x 20')
(FROM TABLE TOP TO FINISHED CEILING)

E

E

1

CUSTOM FABRICATED EQUIPMENT

NOT TO
SCALE

C:\Users\mleidas\Documents\18-133_Architectural_Central_mleidas\UPAS.rvt
11/24/2021 11:45:00 AM

BID DOCUMENTS SUBMITTAL	11/24/2021
100% CONSTRUCTION DOCUMENTS SUBMISSION	07/23/2021
95% CONSTRUCTION DOCUMENTS SUBMISSION	02/12/2021
60% DESIGN DEVELOPMENT SUBMISSION	09/11/2020
30% SCHEMATIC DESIGN SUBMISSION	05/24/2020
Revisions:	Date:

CONSULTANT



747 CONKLIN ROAD,
BINGHAMTON, NY 13903
W: www.ckc-llc.net
E: mberard
T: 607-217-5389

ARCHITECT/ENGINEER OF RECORD



700 Nicholas Blvd, Suite 300
Elk Grove Village, IL 60007
T: 847.952.9362 F: 847.952.9403
www.bancroft-ae.com

STAMP

Office of
Construction
and Facilities
Management



U.S. Department
of Veterans Affairs

Drawing Title
FOOD SERVICES EQUIPMENT - CUSTOM
FABRICATED EQUIPMENT

Approved: Project Director

Phase

BID DOCUMENTS SUBMITTAL

FULLY SPRINKLERED

VA CONTRACT NO: 36C24519C0171

Project Title RENOVATE/UPGRADE NFS KITCHEN - BUILDING 500 BASEMENT	Project Number 613-19-103
Location 510 BUTLER AVENUE, MARTINSBURG, WV 25405	Building Number 500
Issue Date 11/24/21	Checked MDB
Drawn MDB	Drawing Number QF-7