

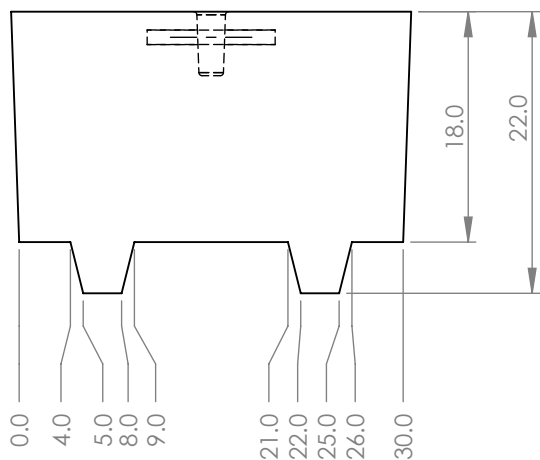
4

3

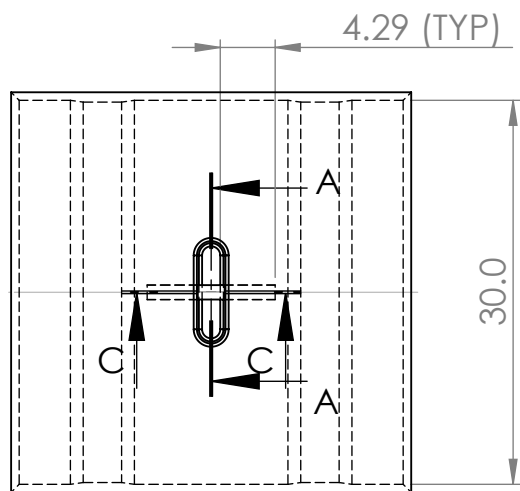
2

1

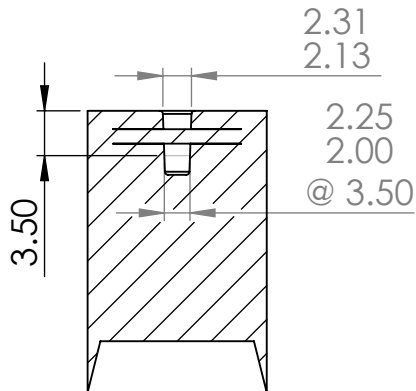
D



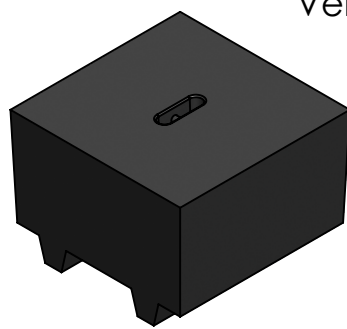
C



B

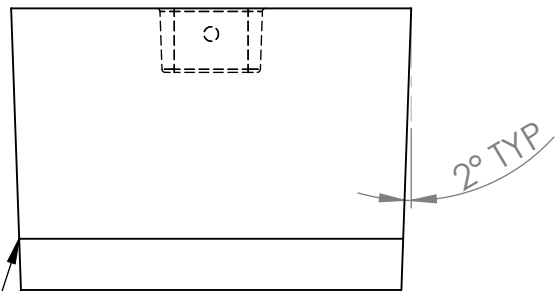


SECTION C-C  
SCALE 1 : 15



Vendor may add a  
0.50 radius on  
all external edges

Vendor can add in draft as shown



POCKET MUST BE ABLE TO DIP  
A 3/4" SAFETY ANCHOR SHACKLE

F.O.S. > 4

#### DRAWING VIEW REVISIONS :

- ENGINEER: NLS DATE: 11/15 ZONE: ALL  
DESCRIPTION: Eliminate surface finish spec, loosen .XX tolerances frm 0.02, Add Rod spec, change rod frm 1045 steel.
- ENGINEER: NLS DATE: 01/16 ZONE: ALL  
DESCRIPTION: Add in Draft and Radius Spec.
- ENGINEER: NLS DATE: 10/17 ZONE: ALL  
DESCRIPTION: Change Pocket frm 4" width and 4" depth, for increased factor of safety.

MATERIAL: CAST IRON ASTM A48, CL30 OR EQUIVALENT

APPROXIMATE WEIGHT: 4400 +/- 100lbs

NO MODIFICATION OF SPECIFIED  
DIMENSIONS OR MATERIALS IS  
ALLOWED UNLESS APPROVED  
BY NOAA ENGINEERS.

Surface Finish: As Cast

DO NOT SCALE DRAWING

DIMENSIONS ARE IN INCHES

TOLERANCES ARE:

ANGLES  $\pm 1^\circ$

FRACTIONS  $\pm 1/8$

DECIMALS

.X  $\pm 0.25$

.XX  $\pm 0.13$

.XXX  $\pm 0.002$

CAD FILE

{ENGR}{Anchor}{4400# NOAA CAST ANCHOR WITH ROD}{3}

THIRD ANGLE PROJECTION



DRAWN

MHO

DATE

07/14

CHECKED

NLS

DATE

11/15



NOAA-PMEL  
Engineering Division

7600 Sand Point Wy NE  
Seattle, WA 98115  
206-526-6800

PROJECT

Engineering Cast Anchor

SHEET NAME

NOAA CAST ANCHOR WITH ROD

PLOT DATE

12/1/2021

SHEET

1 OF 1

4

3

2

1

D

C

B

A