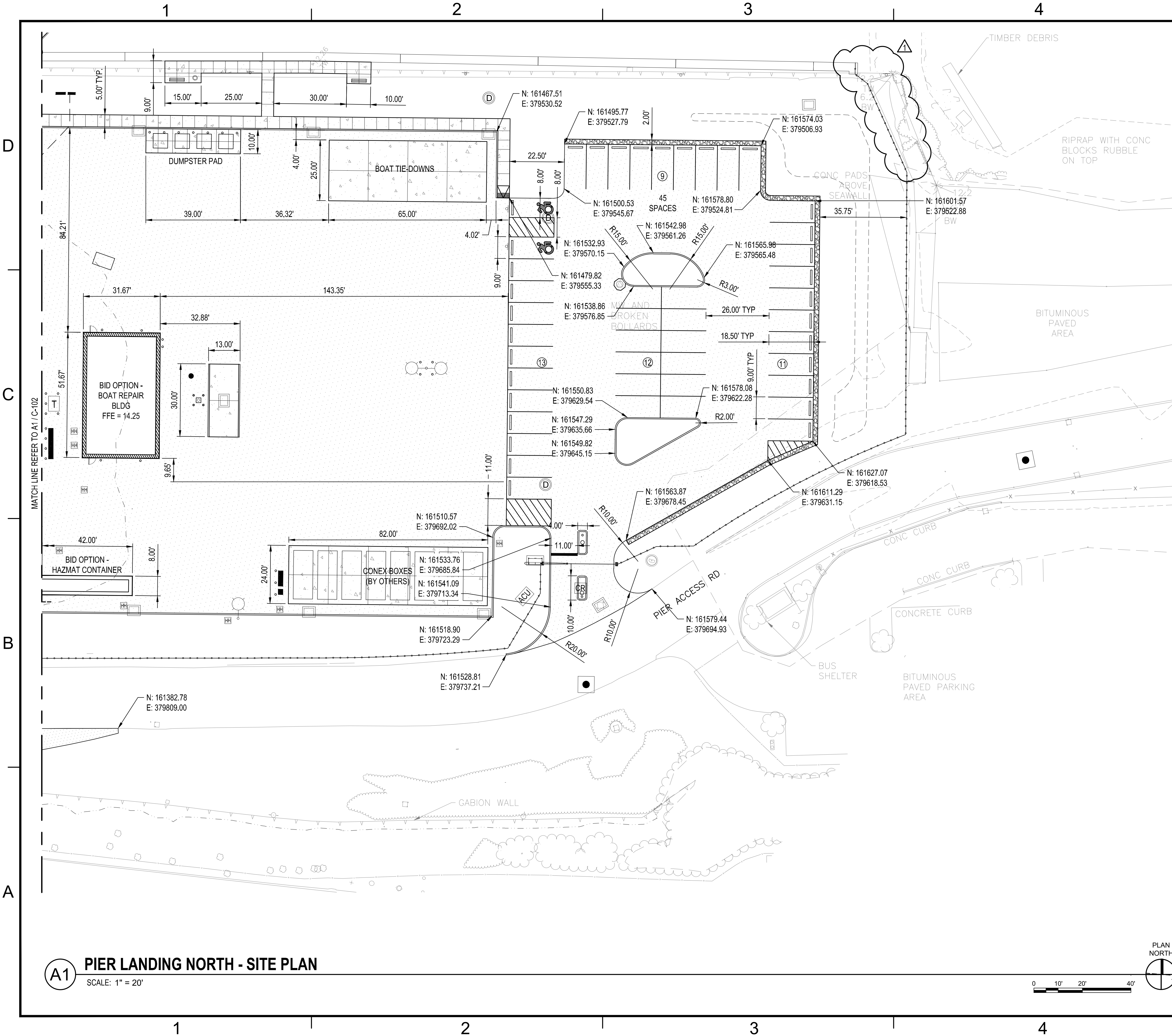


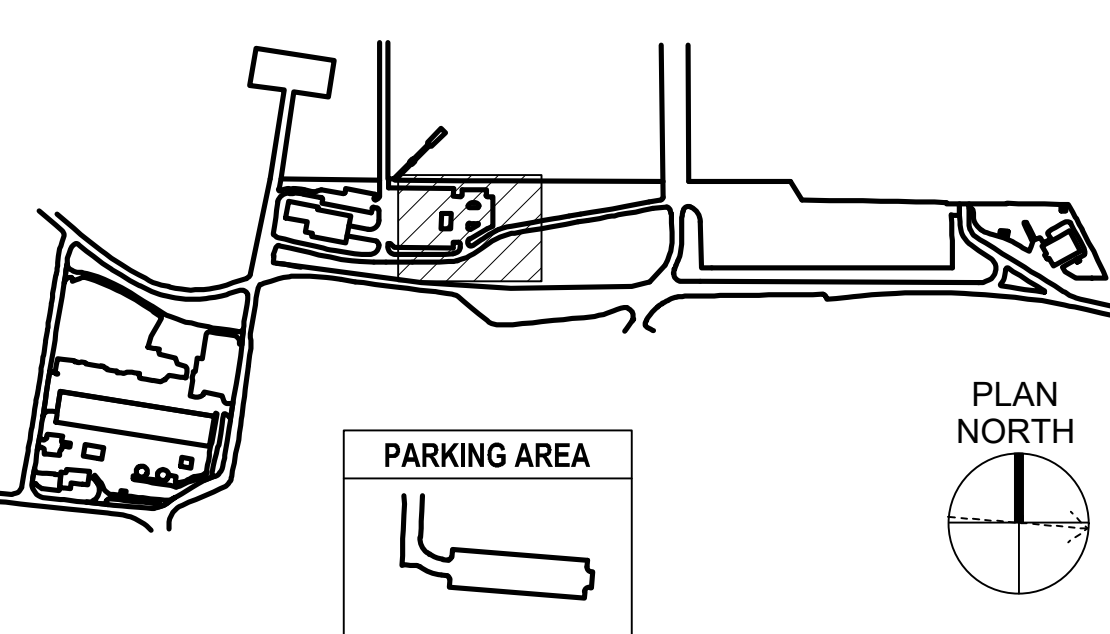
NAVFAC		SYN		DESCRIPTION		DATE		APPRO	
4		PERIMETER FENCE REVISION		04/17/2023					
3		FLOATING DOCK RP8FP		04/17/2023					
2		BASE BID UPDATE		02/27/2023					
1		FIRE EMERGENCY SIGN UPDATE		02/09/2023					
SEAL									
MN+ BMCD JointVenture A/E, INC.									
APPROVED									
FOR COMMANDER NAVFAC									
ACTIVITY Timothy Calahan, PE, NOAA Senior Project Manager									
SATISFACTORY TO DATE 04OCT2022									
PM/DMM DRW KPG CHK PJK RSRIC									
BRANCH/MANAGER DLB									
CHIEF ENGINEER EJA									
FIRE PROTECTION OSN									
NAVAL FACILITIES ENGINEERING SYSTEMS COMMAND NAVAL FACILITIES ENGINEERING SYSTEMS COMMAND - MID-ATLANTIC NAVAL STATION NORFOLK - NORFOLK VA NEWPORT, RHODE ISLAND NAVAL STATION NEWPORT NOAA OMAO SHIP & SUPPORT FACILITY RELOCATION PIER LANDING - OVERALL SITE PLAN									
SCALE: AS NOTED									
PROJECT NO.: 1562331									
CONSTR. CONTR. NO. N4008523R2527									
NAVFAC DRAWING NO. 12873930									
SHEET 54 OF 504									
C-101									



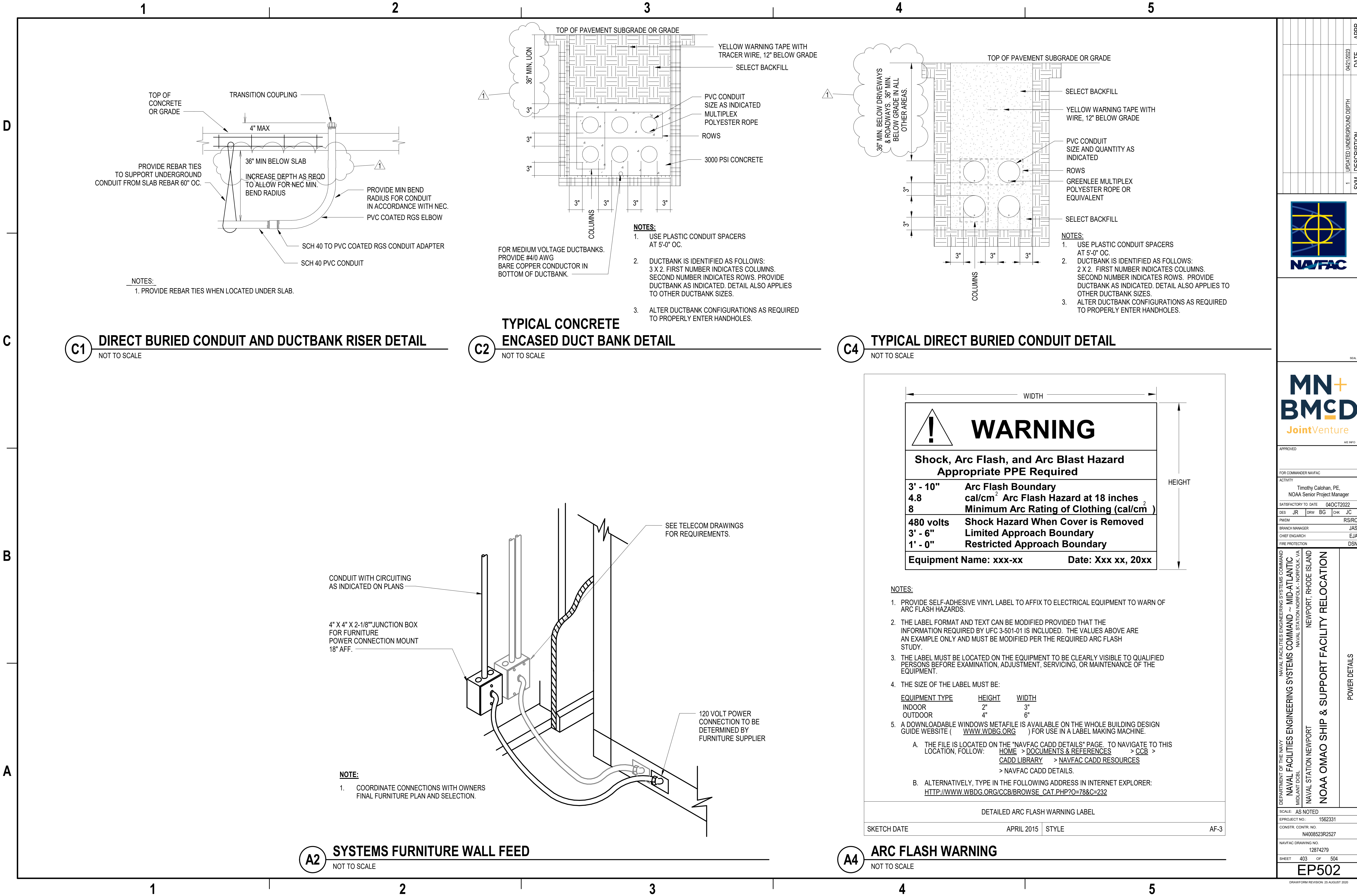
SHEET NOTES

- SEE DRAWING C-001 FOR LEGEND AND ABBREVIATIONS AND SEE DRAWING C-002 FOR GENERAL NOTES.
- SEE DRAWING L-101 FOR LANDSCAPING LAYOUT AND SURFACE TREATMENTS NOT DETAILED ON THIS PLAN.
- CURB OR EDGE OF PAVEMENT RADII SHALL BE 5', UNLESS OTHERWISE NOTED, TYP.

KEY PLAN



				DATE	APPR
				04/21/2023	
				DESCRIPTION	
				PERIMETER FENCE REVISION	
				1	
APPROVED					
FOR COMMANDER NAFAC					
ACTIVITY					
Timothy Calohan, PE, NOAA Senior Project Manager					
SATISFACTORY TO DATE 04OCT2022					
DES KPG DRW KPG CHK PJK					
PM/DM RSRC					
BRANCH MANAGER DLS					
CHIEF ENGINEER EJA					
FIRE PROTECTION DSN					
NAVAL FACILITIES ENGINEERING SYSTEMS COMMAND					
NAVAL FACILITIES ENGINEERING SYSTEMS COMMAND - MID-ATLANTIC					
NAVAL STATION NORFOLK - NORFOLK VA					
NAVAL STATION NEWPORT					
NOAA OMAO SHIP & SUPPORT FACILITY RELOCATION					
NEWPORT, RHODE ISLAND					
PIER LANDING NORTH - SITE PLAN					
SCALE: AS NOTED					
E/PROJECT NO.: 1562331					
CONSTR. CONTR. NO. N4008523R2527					
NAVFAC DRAWING NO. 12873932					
SHEET 56 OF 504					
C-103					
DRAWING REVISION: 25 AUG 2020					



APPR	DATE	04/21/2023
SYN	DESCRIPTION	1. UPDATED UNDERGROUND DEPTH.

APPROVED	
FOR COMMANDER NAVFAC	
ACTIVITY	
Timothy Calohan, PE, NOAA Senior Project Manager	
SATISFACTORY TO DATE 04OCT2022	
DES	JR
BRW	BG
CHK	JC
PM/DM	RS/RC
BRANCH MANAGER	JAS
CHIEF ENGINEER	EJA
FIRE PROTECTION	DSN

DEPARTMENT OF THE NAVY
NAVAL FACILITIES ENGINEERING SYSTEMS COMMAND
NAVAL STATION NORFOLK - NORFOLK, VA
MID-ATLANTIC
NAVAL STATION NEWPORT
NOAA OMAO SHIP & SUPPORT FACILITY RELOCATION
NEWPORT, RHODE ISLAND

POWER DETAILS

SCALE:	AS NOTED
PROJECT NO.:	1562331
CONSTR. CONTR. NO.	N4008523R2527
NAVFAC DRAWING NO.	12874279
SHEET	403 OF 504

EP502

DRAWING REVISION: 25 AUGUST 2020