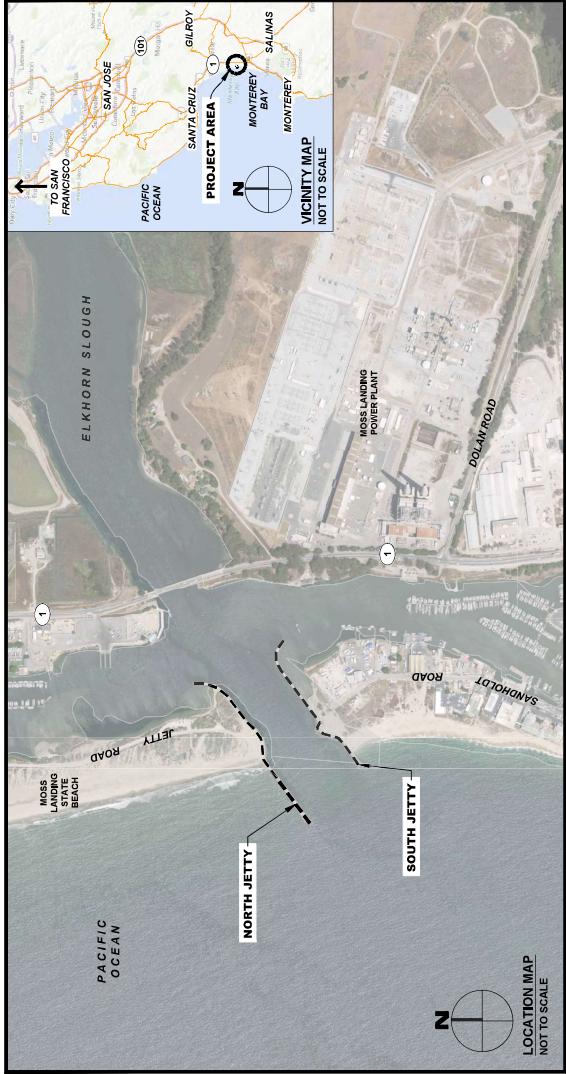




US Army Corps
of Engineers®
San Francisco District

MONTEREY COUNTY, CALIFORNIA MOSS LANDING JETTY REPAIR PROJECT



SOLICITATION NO.: W912P723B0001
CONTRACT NO.: W912P723C00XX
ISSUE DATE: OCTOBER 2022

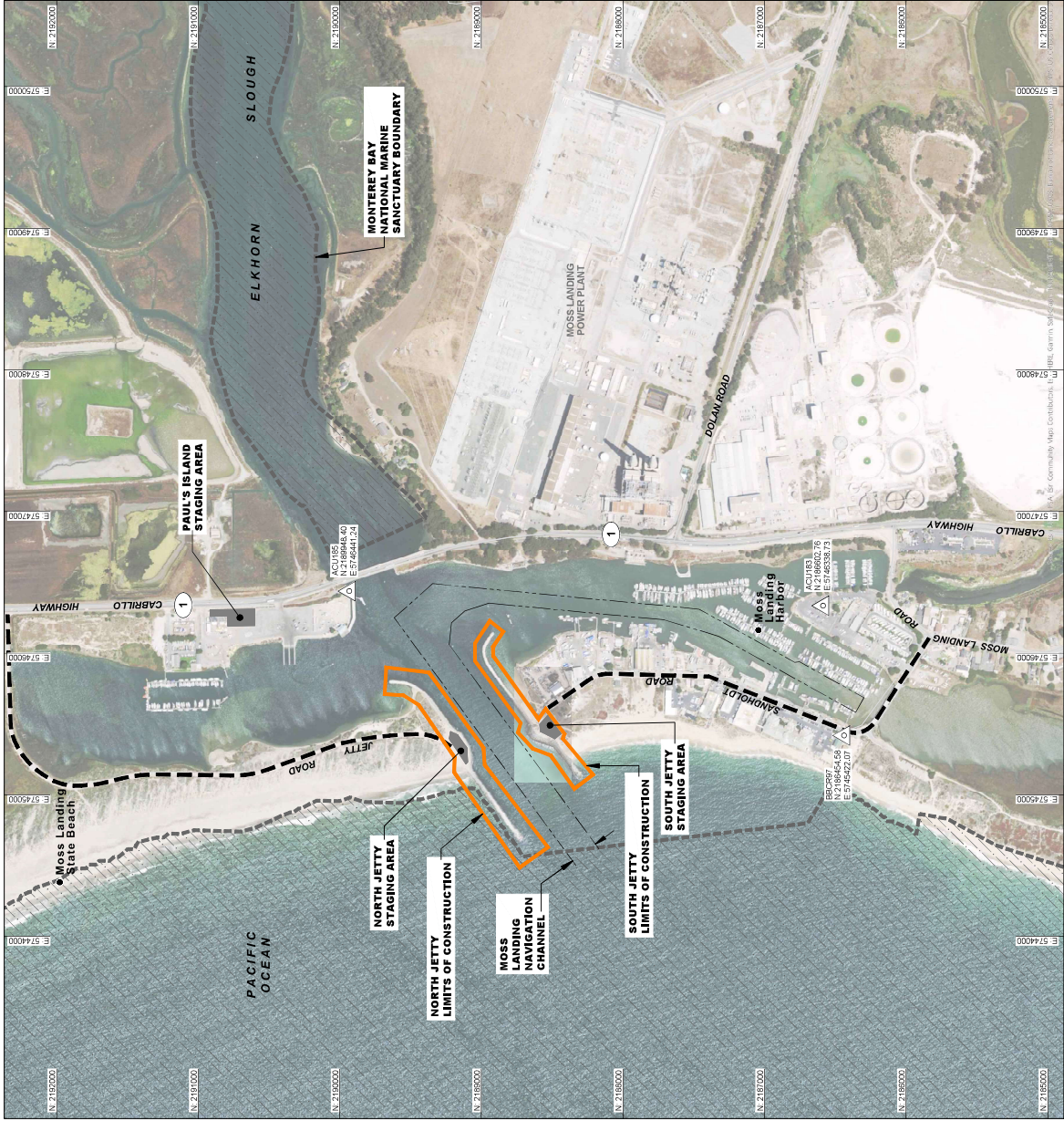
COVERSHEET		SHEET ID G-001	
MONTEREY COUNTY, CALIFORNIA MOSS LANDING JETTY REPAIR PROJECT			
DESIGNED BY: F. SUN DRAWN BY: A. KIRSCH CHECKED BY: A. FAHMAN SUBMITTED BY: S. HA PROJECT NO: W912P723C00XX CONTRACT NO: W912P723B0001 SOLICITATION NO: W912P723C00XX ISSUE DATE: OCTOBER 2022		MARK DESCRIPTION DATE	
U.S. ARMY CORPS OF ENGINEERS 450 GOLDEN GATE AVE 4TH FLOOR SAN FRANCISCO DISTRICT SAN FRANCISCO, CA 94102-4041		US Army Corps of Engineers®	

THIS PROJECT WAS DESIGNED BY THE SAN FRANCISCO DISTRICT OF THE U.S. ARMY CORPS OF ENGINEERS. THE INITIALS OR SIGNATURES ON THESE PROJECT DOCUMENTS ARE WITHIN THE SCOPE OF THEIR EMPLOYMENT AS REQUIRED BY ER 1110-4-8162.

SIGNATURES AFFIXED BELOW INDICATE OFFICIAL RECOMMENDATION AND APPROVAL OF DRAWINGS IN THIS SET.

SUBMITTED BY:	DATE
SON T. HA, P.E., P.A.M. CHIEF ENGINEERING BRANCH	
APPROVED BY:	DATE
RYAN T. LARSON, P.E. CHIEF ENGINEERING AND TECHNICAL SERVICES DIVISION	
PREPARED UNDER THE DIRECTION OF:	
KEVIN P. ARNETT, P.E. LT, COLONEL, DISTRICT COMMANDER	

20 19 18 17 16 15 14 13 12 11 10 9 8 7 6 5 4 3 2 1



NOTES:

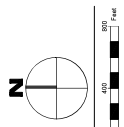
1. INGRESS AND EGRESS TO ANY DOCKS / PIERS / BOAT YARDS ARE ONLY SURVEYED TO THE NEAREST STREET, CALIFORNIA HIGHWAY 1, OR FEDERAL INTERSTATE.
2. SURVEY CONTROL HORIZONTAL DATUM IS CALIFORNIA NAD83 STATE PLANE ZONE 4, US FOOT. SURVEY CONTROL VERTICAL DATUM IS MLLW.
3. NOAA REFERENCE STATION: MOSS LANDING, CA
MSS LANDING 855016
TIDAL EPOCH: 1985-2001

LEGEND

- EXISTING ROAD
- NAVIGATION CHANNEL
- SURVEY CONTROL POINT
- APPROXIMATE LIMITS OF CONSTRUCTION
- MONTEREY BAY NATIONAL MARINE SANCTUARY

CONTROL POINT COORDINATE TABLE				
POINT ID	EASTING	NORTHING	ELEVATION, FT (MLLW)	MARKER
ACU1183	5746338.73	2,188,602.76	11.52	941 3616 D TIDAL
ACU1185	5746441.24	2,189,948.40	8.46	941 3623 A TIDAL
BBQ2597	5745422.07	2,188,654.56	14.14	941 3616 A TIDAL

TIDAL DATUMS	
DATUM	ELEVATION, FT (MLLW)
MHHW	5.22
MHW	4.52
MSL	2.73
MLW	1.04
MLLW	0.00



A1 HAUL ROUTES AND SURVEY CONTROL POINTS
SCALE: 1"=400'

SHEET ID
G-003

MONTEREY COUNTY, CALIFORNIA
MOSS LANDING JETTY REPAIR PROJECT
HAUL ROUTES AND
SURVEY CONTROL POINTS

DESIGNED BY: F. SUN
CHECKED BY: A. FARMAN
SUBMITTED BY: S. HA
PROJECT NO: W912722C000X
CONTRACT NO: W912722C000X
SOLICITATION NO: 01
ISSUE DATE: OCTOBER 2022

U.S. ARMY CORPS OF ENGINEERS
SAN FRANCISCO DISTRICT
450 GOLDEN GATE AVE 4TH FLOOR
SAN FRANCISCO, CA 94102-3404



SOLICITATION



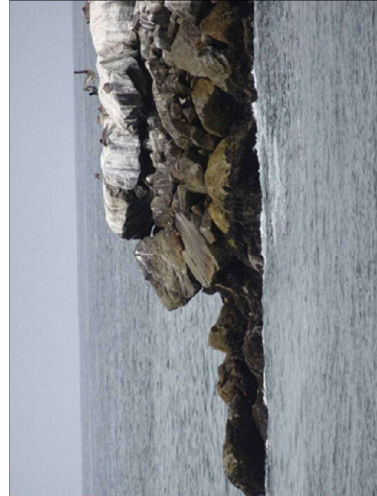
KEY NOTES

- 01 NORTH JETTY HEAD, EXISTING CONDITION. SEE DWGS C-101-C104 FOR REPAIR DETAILS.
- 02 EXISTING ATON VERTICAL STRUCTURAL MEMBER TO BE REMOVED FROM CONCRETE BASE AND STORED DURING CONSTRUCTION. (E) CONCRETE BASE TO BE DEMOLISHED. (N) CONCRETE BASE TO BE RECONSTRUCTED PER EXISTING CONDITIONS. COORDINATE WITH USGC PRIOR TO RE-INSTALLATION OF ATON.
- 03 NORTH JETTY SEAWARD SIDE, EXISTING CONDITION. SEE DWGS C-101 AND C-102 FOR REPAIR DETAILS.
- 04 EXISTING DANGER SIGN AND CONCRETE BASE TO BE REMOVED AND REPLACED WITH NEW DANGER SIGN PER EP 310-146.
- 05 TIMBER PILES TO BE REMOVED (8 IN TOTAL). CONTRACTOR TO VERIFY LOCATION AND NUMBER OF PILES.

LEGEND

- JETTY CONTROL LINE
- APPROXIMATE JETTY CREST
- APPROXIMATE JETTY TOE
- MONTEREY BAY NATIONAL MARINE SANCTUARY
- (E) TIMBER PILE TO BE REMOVED
- EXISTING FEATURE TO BE DEMOLISHED/REMOVED

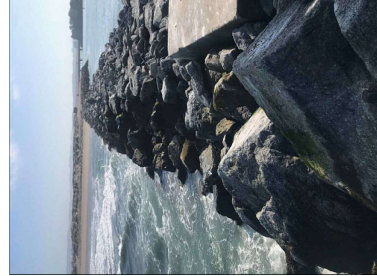
G1 PLAN VIEW - NORTH JETTY STA 46+50 TO STA 55+70
SCALE: 1"=40'



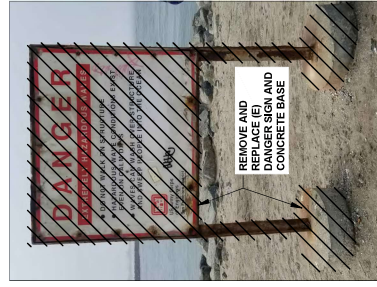
01 NORTH JETTY HEAD (FACING NORTH)



02 NAVIGATION AID



03 NORTH JETTY SEAWARD SIDE FACING EAST



04 DANGER SIGN

U.S. Army Corps of Engineers

MARK	DESCRIPTION	DATE

ISSUE DATE	OCTOBER 2022
DESIGNED BY	F. SUN
DRAWN BY	A. HIRSCH
CHECKED BY	A. FARHAN
PROJECT NO.	W1972722C000X
CONTRACT NO.	W1972722C000X
PROJECT NO.	S. HA

U.S. ARMY CORPS OF ENGINEERS
450 GOLDEN GATE AVE. 4TH FLOOR
SAN FRANCISCO, CA 94102-3404

MONTEREY COUNTY, CALIFORNIA
MOSS LANDING JETTY REPAIR PROJECT

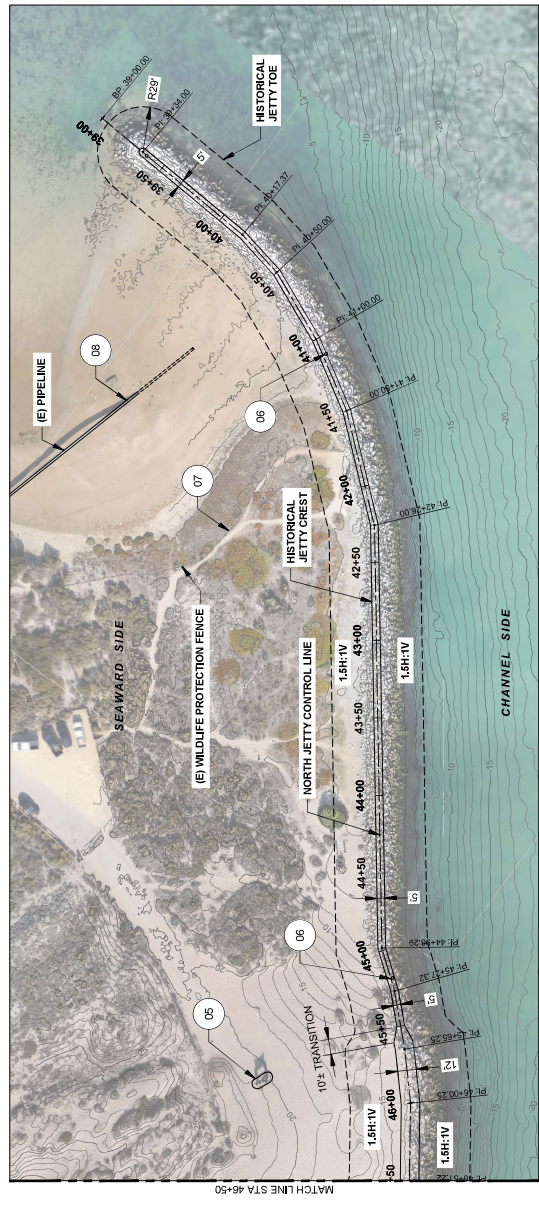
NORTH JETTY
EXISTING CONDITIONS

SHEET ID
C-001

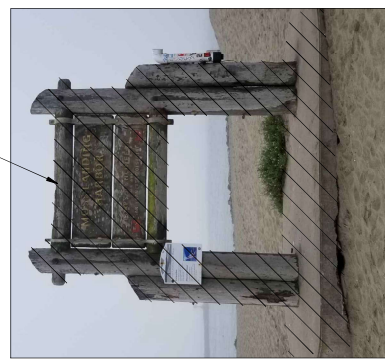
 US Army Corps of Engineers	DATE		MARK		DESCRIPTION		
U.S. ARMY CORPS OF ENGINEERS SAN FRANCISCO DISTRICT 490 GOLDEN GATE AVE., 4TH FLOOR SAN FRANCISCO, CA 94102-4041		DESIGNED BY: F. SUN		CHECKED BY: A. NBSCH CRAWAY BY: A. NBSCH CONTRACT NO. W67298001 SOLICITATION NO. W67298001		SUBMITTED BY: A. FARAHAN PROJECT NO. W67298000X	
		SIZE: 11 INCH D		SCALE: 1/8" = 1'-0"		DATE: OCTOBER 2022 ISSUE DATE:	

MONTEREY COUNTY, CALIFORNIA
MOSS LANDING JETTY REPAIR PROJECT

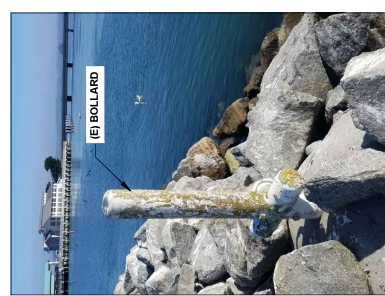
NORTH JETTY
EXISTING CONDITIONS



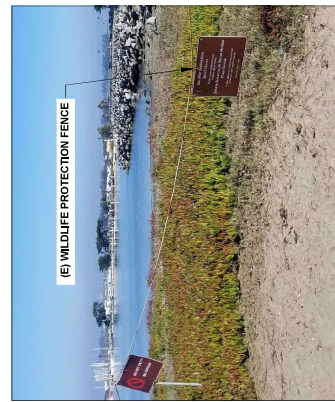
G1 PLAN VIEW - NORTH JETTY STA 39+00 TO STA 46+50
SCALE: 1"=40'



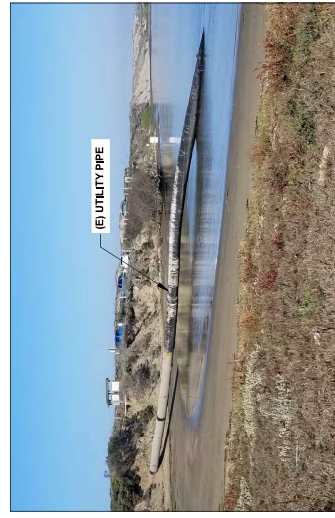
05 NORTH JETTY PROJECT SIGN



06 BOLLARD



07 WILDLIFE PROTECTION FENCE




08 UTILITY PIPE

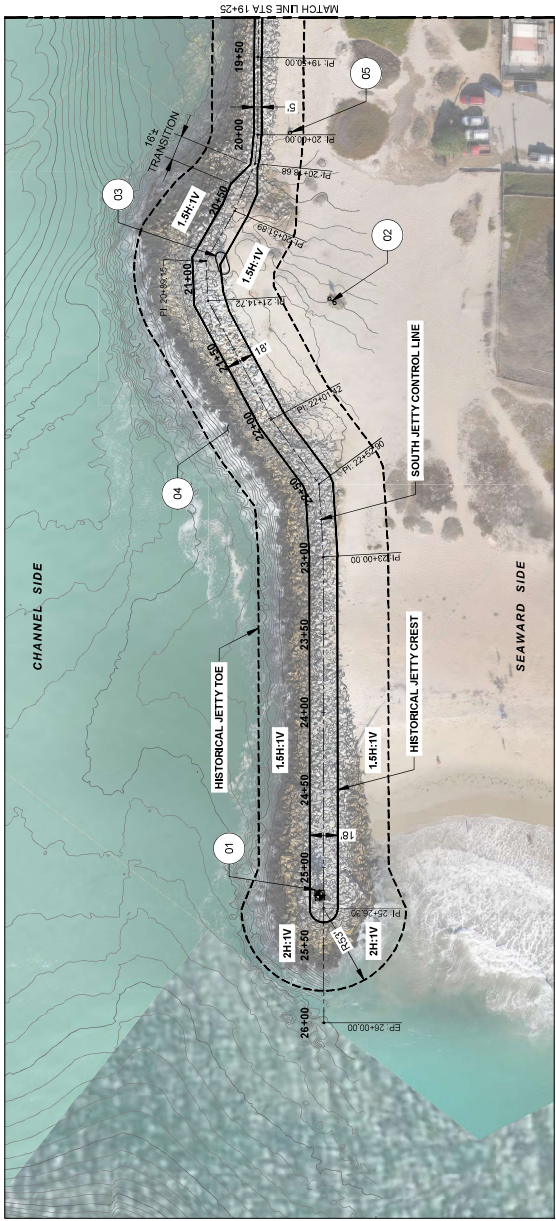
KEY NOTES

- 05 EXISTING NORTH JETTY PROJECT SIGN AND CONCRETE BASE TO BE REMOVED AND REPLACED WITH NEW GROUND-MOUNTED PROJECT SIGN PER E 310-14;
- 06 EXISTING BOLLARD (TYPICAL); PROTECT IN PLACE.
- 07 EXISTING WILDLIFE PROTECTION FENCE; PROTECT IN PLACE.
- 08 UNKNOWN UTILITY PIPE; PROTECT IN PLACE.

LEGEND

- | | |
|---|-----------------------------------|
| — — — — — | JETTY CONTROL LINE |
| ————— | APPROXIMATE JETTY CREST |
| - - - - - | APPROXIMATE JETTY TOE |
|  | EXISTING FEATURE TO BE DEMOLISHED |

20 19 18 17 16 15 14 13 12 11 10 9 8 7 6 5 4 3 2 1



G1 PLAN VIEW - SOUTH JETTY STA 19+25 TO STA 26+00
SCALE: 1"=40'



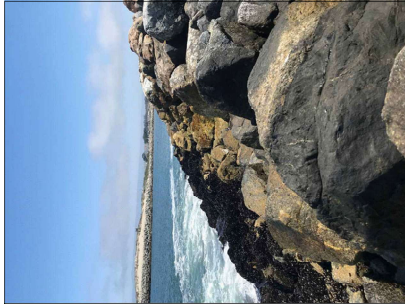
01 NAVIGATION AID



02 DANGER SIGN



03 SOUTH JETTY PROJECT SIGN



04 SOUTH JETTY CHANNEL SIDE
FACING EAST

KEY NOTES

- (01) EXISTING ATON VERTICAL STRUCTURAL MEMBER TO BE REMOVED FROM CONCRETE BASE AND STORED DURING CONSTRUCTION. EXISTING CONCRETE BASE TO BE DEMOLISHED. (N) CONCRETE BASE TO BE CONSTRUCTED FOR ATON TO BE INSTALLED ON (N) CONCRETE BASE. CONSTRUCTION SHALL BE COMPLETED PRIOR TO RE-INSTALLATION OF ATON.
- (02) EXISTING DANGER SIGN TO BE REMOVED AND REPLACED WITH NEW DANGER SIGN PER USAGE SIGN STANDARDS MANUAL EP 31C-46a. SEE C-105 FOR NEW LOCATION.
- (03) EXISTING SOUTH JETTY PROJECT IDENTIFICATION SIGN AND CONCRETE BASE TO BE REMOVED. INSTALL NEW GROUND-MOUNTED PROJECT IDENTIFICATION SIGN PER USAGE SIGN STANDARDS MANUAL EP 31C-46a.
- (04) SOUTH JETTY EXISTING CONDITION, SEE PLANS FOR REPAIR DETAILS.
- (05) EXISTING BOLLARD (TYPICAL). PROTECT IN PLACE.

LEGEND

- JETTY CONTROL LINE
- APPROXIMATE JETTY CREST
- APPROXIMATE JETTY TOE
- EXISTING FEATURE TO BE DEMOLISHED

U.S. Army Corps of Engineers

MARK	DESCRIPTION

SIZE	AND D

ISSUE DATE	DESIGNED BY	DRAWN BY	CHECKED BY	PROJECT NO.	CONTRACT NO.	SUBMITTAL NO.

U.S. ARMY CORPS OF ENGINEERS	SAN FRANCISCO DISTRICT	450 GOLDEN GATE AVE 4TH FLOOR	SAN FRANCISCO, CA 94102-3404
DESIGNED BY	F. SUN	ISSUE DATE	OCTOBER 2022
DRAWN BY	A. KIRSCH	SUBMITTAL NO.	W19722200001
CHECKED BY	A. FARHANI	CONTRACT NO.	W197222000XX
PROJECT NO.	S. HA	SUBMITTED BY	S. HA

U.S. ARMY CORPS OF ENGINEERS
MONTREY COUNTY, CALIFORNIA
MOSS LANDING JETTY REPAIR PROJECT
SOUTH JETTY
EXISTING CONDITIONS

SHEET ID
C-003

20
19
18
17
16
15
14
13
12
11
10
9
8
7
6
5
4
3
2
1

US Army Corps of Engineers®

100

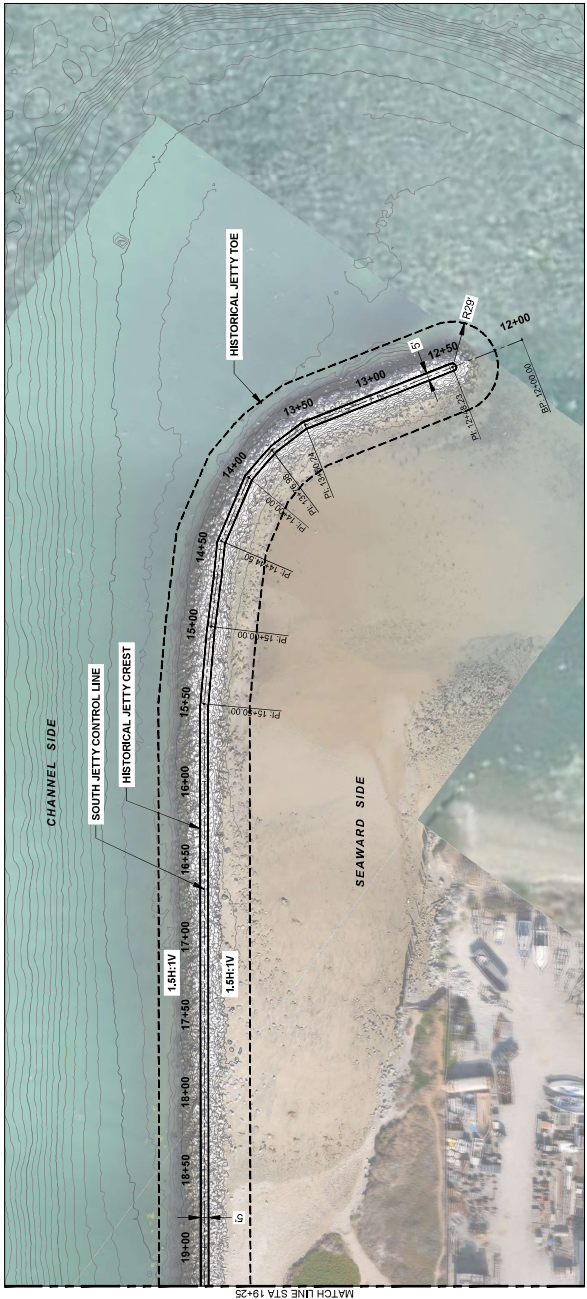
YEARS

LEGEND

JETTY CONTROL LINE

APPROXIMATE JETTY CREST

APPROXIMATE JETTY TOE



G1 PLAN VIEW - SOUTH JETTY STA 12+00 TO STA 19+25
SCALE: 1"=40'

MARK	DESCRIPTION	DATE

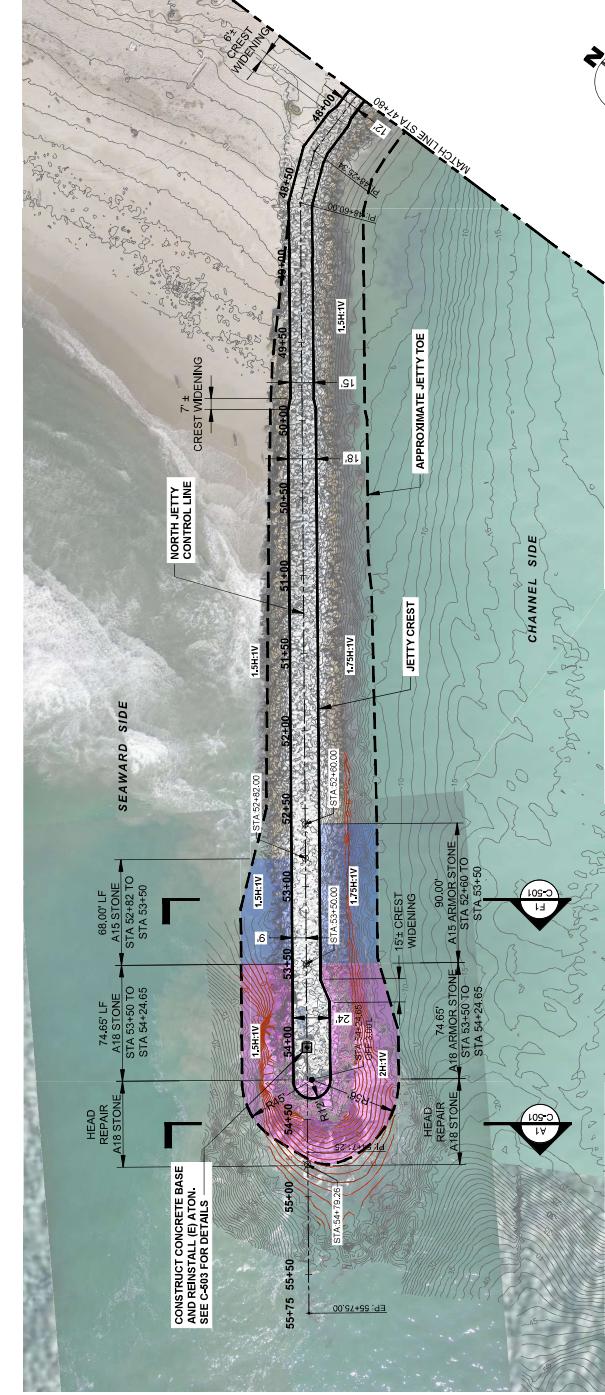
ISSUE DATE	DESIGNED BY	DRAWN BY	CHECKED BY	SUBMITTED BY	PROJECT NO.
OCTOBER 2022	F. SUN	A. HIRSCH	A. FARHANI	S. HA	W192722C00XX
SOLUTION NO.	W192722C0001	W192722C0001	W192722C0001	W192722C0001	W192722C0001

U.S. ARMY CORPS OF ENGINEERS
450 GOLDEN GATE AVE 4TH FLOOR
SAN FRANCISCO, CA 94102-4041

MONTREY COUNTY, CALIFORNIA
MOSS LANDING JETTY REPAIR PROJECT
SOUTH JETTY
EXISTING CONDITIONS

SHEET ID
C-004

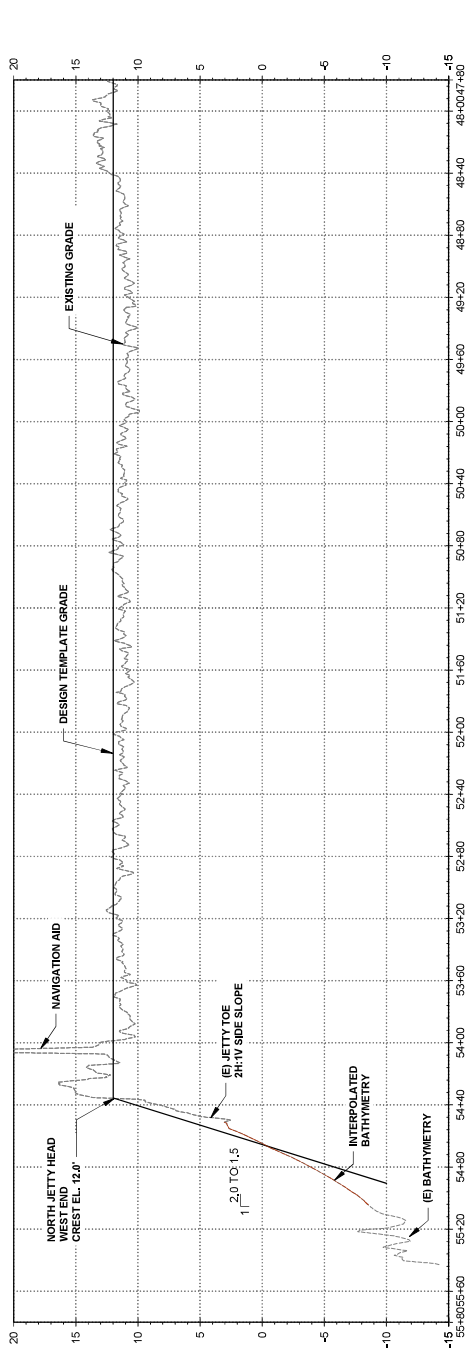
1 2 3 4 5 6 7 8 9 10 11 12 13 14 15 16 17 18 19 20



- LEGEND**
- REPAIR LOCATION - A18 ARMOR STONE
 - REPAIR LOCATION - A15 ARMOR STONE
 - (E) CONTOUR (INTERPOLATED)
 - (E) CONTOUR
 - JETTY CREST
 - JETTY TOE

- NOTES**
- THE JETTY CONTROL LINE SHOWN ON THIS DRAWING ESTABLISHES THE ALIGNMENT OF THE EXISTING JETTY AND IS BASED ON THE CONTROL TABLE ON SHEET C-100. THE JETTY REPAIR LOCATIONS SHOWN CORRESPOND TO THE JETTY REPAIR CENTERLINE AT ALL LOCATIONS.
 - HATCHING SHOWN IS INDICATIVE OF THE APPROXIMATE REPAIR LOCATION, AND DOES NOT INDICATE THE ACTUAL SIZE OR DIMENSIONS OF THE REPAIR AREA.
 - DIMENSIONS OF JETTY CREST WIDENING AND TRANSITION AREAS ARE APPROXIMATE.

G1 PLAN VIEW - NORTH JETTY STA 47+80 TO STA 55+75
SCALE: 1"=40'



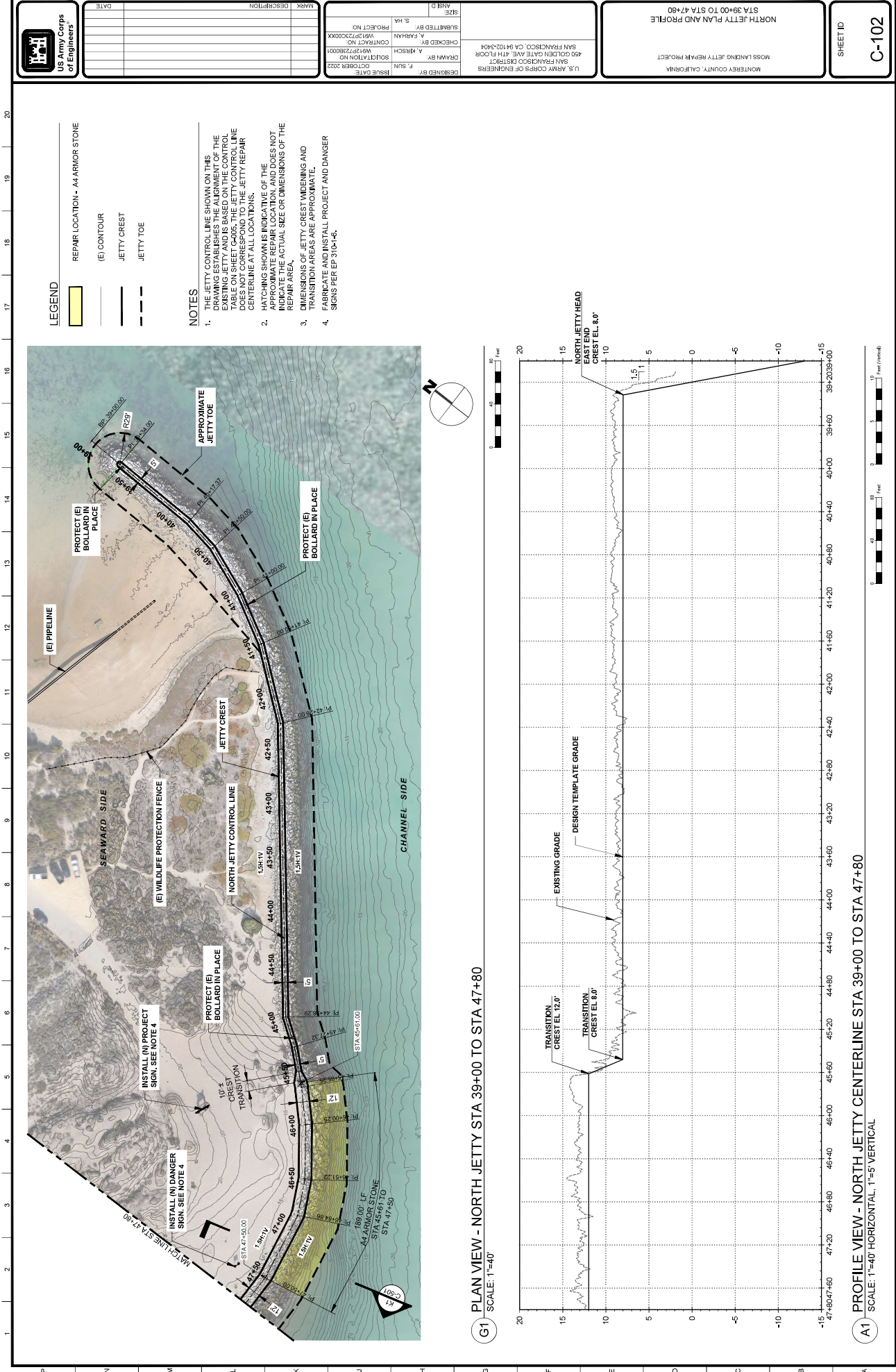
A1 PROFILE VIEW - NORTH JETTY CENTERLINE STA 47+80 TO STA 55+75
SCALE: 1"=40' HORIZONTAL, 1"=5' VERTICAL

U.S. ARMY CORPS OF ENGINEERS
MONTREY COUNTY, CALIFORNIA
MOSS LANDING JETTY REPAIR PROJECT
NORTH JETTY PLAN AND PROFILE
STA 47+80 TO STA 55+75

DESIGNED BY: F. SUN
DRAWN BY: J. KIRK
CHECKED BY: A. FARHAN
SUBMITTED BY: S. HA
PROJECT NO.: W912722C000X
CONTRACT NO.: W912722C000X
SOLUTION NO.: W912722C000X
ISSUE DATE: OCTOBER 2022

SIZE: 11x17
ANSI D

SHEET ID: C-101



U.S. ARMY CORPS OF ENGINEERS		SHEET ID C-102	
NORTH JETTY PLAN AND PROFILE STA 39+00 TO STA 47+80		MONTEREY COUNTY, CALIFORNIA MOSS LANDING JETTY REPAIR PROJECT	
DESIGNED BY F. SUN	DRAWN BY A. KIRSCH	CHECKED BY A. FARHMAN	SIZE 11x17
ISSUE DATE OCTOBER 2022	CONTRACT NO. W62722200001	PROJECT NO. W62722200001	DATE 10/20/2022

2 3 4 5 6 7 8 9 10 11 12 13 14 15 16 17 18 19 20

U.S. ARMY CORPS OF ENGINEERS

LOGO

DESIGNED BY: F. SUN

DRAWN BY: A. MRSCH

CHECKED BY: S. HA

PROJECT NO: W91272200001

ISSUE DATE: OCTOBER 2022

CONTRACT NO: W91272200001

SUBMITTED BY: S. HA

PROJECT NO: W91272200001

U.S. ARMY CORPS OF ENGINEERS

450 GOLDEN GATE AVE 4TH FLOOR

SAN FRANCISCO, CA 94102-4001

DESIGNED BY: F. SUN

DRAWN BY: A. MRSCH

CHECKED BY: S. HA

PROJECT NO: W91272200001

MONTEREY COUNTY, CALIFORNIA

MOSS LANDING JETTY REPAIR PROJECT

SOUTH JETTY PLAN AND PROFILE

STA 19+20 TO STA 26+00

SHEET ID

C-103

LEGEND

REPAIR LOCATION - A15 ARMOR STONE

REPAIR LOCATION - A7 ARMOR STONE

(E) CONTOUR

JETTY CREST

JETTY TOE

NOTES

1. THE JETTY CONTROL LINE SHOWN ON THIS DRAWING ESTABLISHES THE ALIGNMENT OF THE EXISTING JETTY. THE JETTY CONTROL LINE DOES NOT CORRESPOND TO THE JETTY CENTERLINE AT ALL LOCATIONS.

2. HATCHING SHOWN IS INDICATIVE OF THE APPROXIMATE REPAIR LOCATION, AND DOES NOT INDICATE ACTUAL SIZE OR DIMENSIONS OF THE REPAIR AREAS.

3. DIMENSIONS OF JETTY CREST WIDENING AND TRANSITION AREAS ARE APPROXIMATE.

4. FABRICATE AND INSTALL SIGNS PER EP 3104-4.

G1 PLAN VIEW - SOUTH JETTY STA 19+20 TO STA 26+00
SCALE: 1"=40'

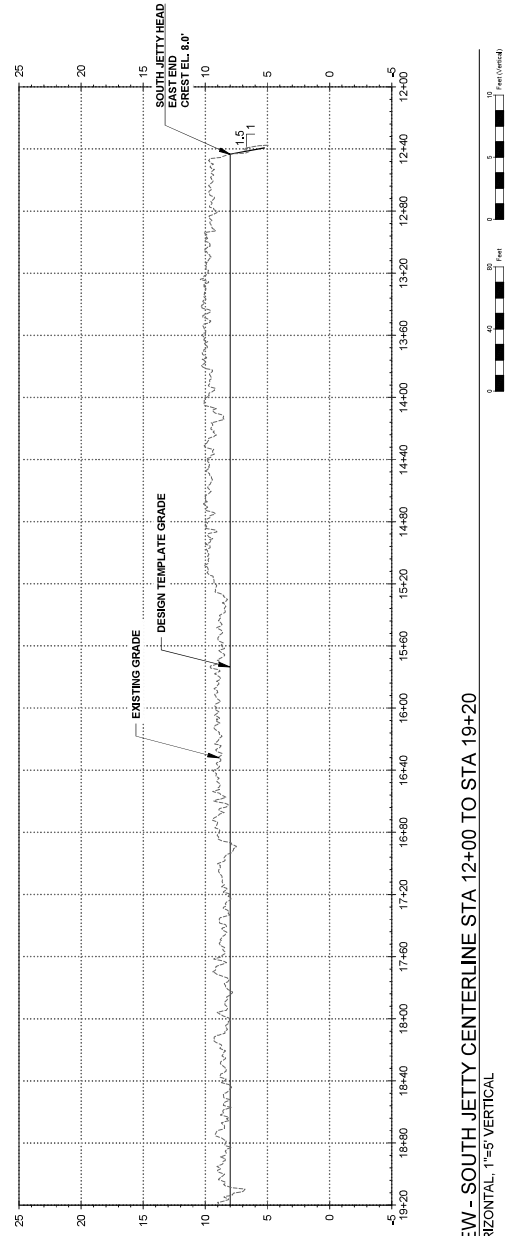
A1 PROFILE VIEW - SOUTH JETTY CENTERLINE STA 19+20 TO STA 26+00
SCALE: 1"=40' HORIZONTAL, 1"=5' VERTICAL

C:\users\BCE\AN\project\call\emp\acshd\m_26041_C103-C104.dwg 11 Oct 2023 - 4:47pm

2 3 4 5 6 7 8 9 10 11 12 13 14 15 16 17 18 19 20



G1 PLAN VIEW - SOUTH JETTY STA 12+00 TO STA 19+20
SCALE: 1"=40'



A1 PROFILE VIEW - SOUTH JETTY CENTERLINE STA 12+00 TO STA 19+20
SCALE: 1"=40' HORIZONTAL, 1"=5' VERTICAL



US Army Corps of Engineers

DATE	REVISION	DESCRIPTION

ISSUE DATE	DESIGNED BY	DRAWN BY	CHECKED BY	PROJECT NO.
OCTOBER 2022	F. SUN	A. KIRSCH	A. FARHAN	W197222C00XX

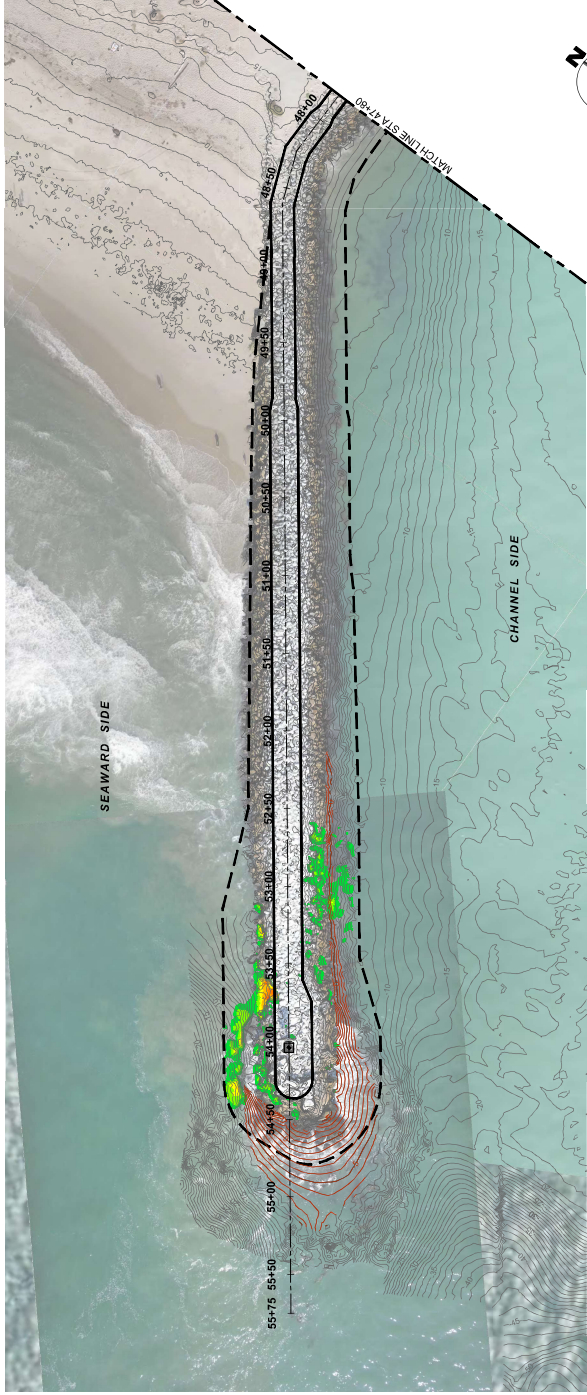
U.S. ARMY CORPS OF ENGINEERS
SAN FRANCISCO DISTRICT
450 GOLDEN GATE AVE 4TH FLOOR
SAN FRANCISCO, CA 94102-3404

MONTEREY COUNTY, CALIFORNIA
MOSS LANDING JETTY REPAIR PROJECT

SOUTH JETTY PLAN AND PROFILE
STA 12+00 TO STA 19+20

SHEET ID
C-104

1 2 3 4 5 6 7 8 9 10 11 12 13 14 15 16 17 18 19 20



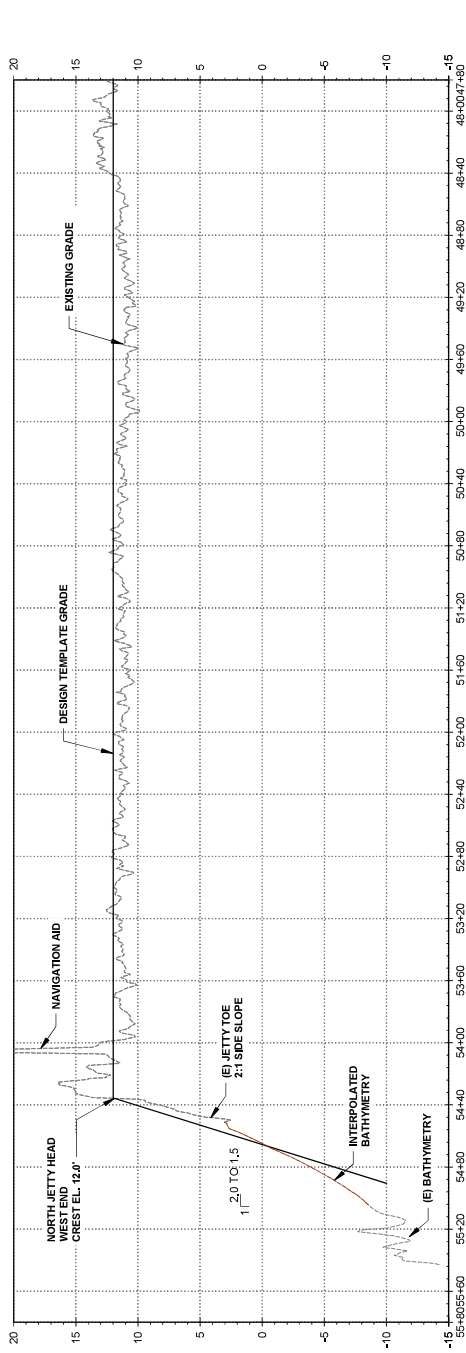
DEPTH BELOW DESIGN TEMPLATE (FT)			
NO.	FROM	TO	COLOR
1	2.0	3.0	Green
2	3.0	4.0	Light Green
3	4.0	5.0	Yellow
4	5.0	6.0	Orange
5	6.0	7.0	Dark Orange
6	7.0	8.0	Red
7	8.0	9.0	Dark Red
8	9.0	10.0	Black

- LEGEND**
- (E) CONTOUR (INTERPOLATED)
 - (E) CONTOUR
 - JETTY CREST
 - JETTY TOE

NOTES:

- DUE TO INCOMPLETE SURVEY DATA AT THE NORTH JETTY HEAD AREA, NOT ALL CONTOURS AND RANGES ARE SHOWN. INTERPOLATED CONTOUR DATA AND SLOPES MAY NOT REFLECT ACTUAL EXISTING CONDITIONS.

G1 PLAN VIEW - NORTH JETTY STA 47+80 TO STA 55+75
SCALE: 1"=40'




A1 PROFILE VIEW - NORTH JETTY CENTERLINE STA 47+80 TO STA 55+75
SCALE: 1"=40' HORIZONTAL, 1"=5' VERTICAL

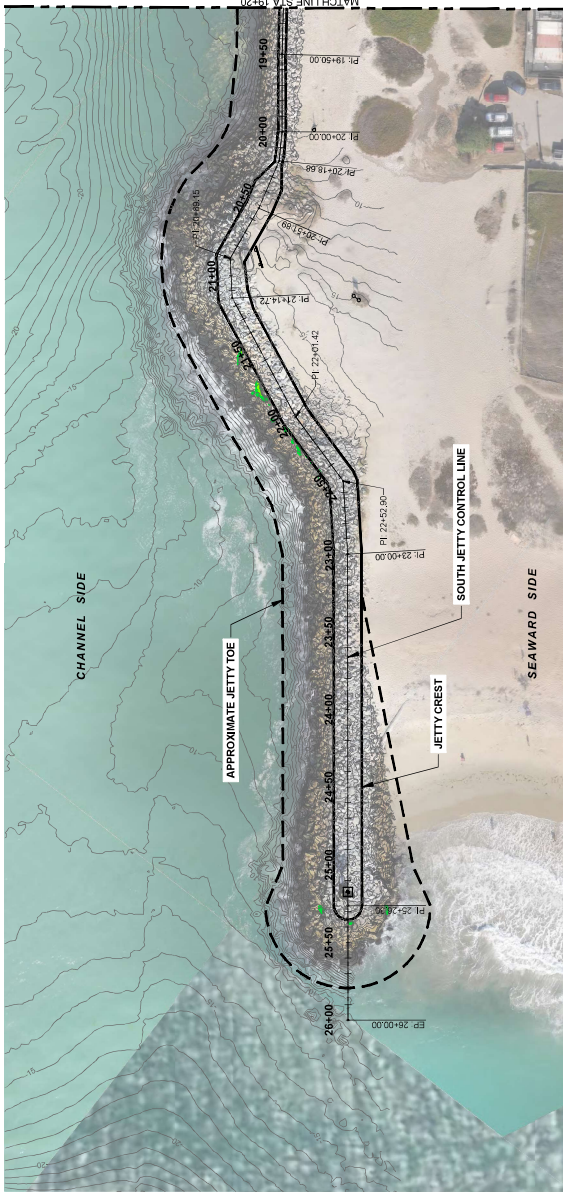
U.S. ARMY CORPS OF ENGINEERS
MONTREY COUNTY, CALIFORNIA
MOSS LANDING JETTY REPAIR PROJECT
NORTH JETTY ISOPACH PLAN AND PROFILE
STA 47+80 TO STA 55+75

DESIGNED BY: F. SUN
DRAWN BY: M. HIRSCH
CHECKED BY: A. FARHAN
SUBMITTED BY: S. HA
PROJECT NO.: W192722C00XX
CONTRACT NO.: W192722C00XX
ISSUE DATE: OCTOBER 2022

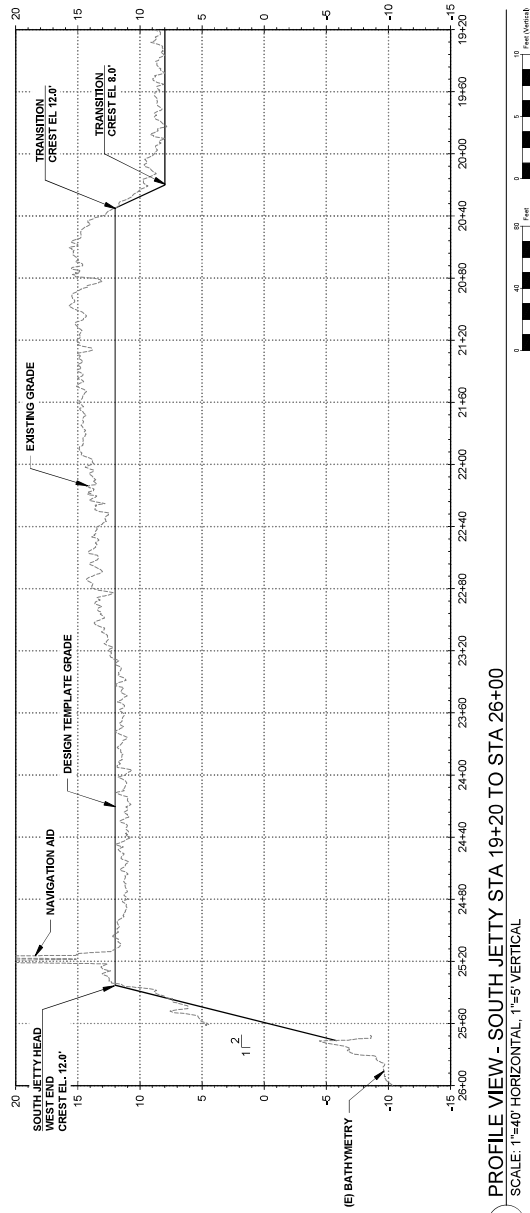
SIZE: 11x17
ANSI D

SHEET ID: C-111

 U.S. Army Corps of Engineers	SHEET ID C-113		SOUTH JETTY IRRIGATION PLAN AND PROFILE STA 19+20 TO STA 26+00	
	MONTREY COUNTY, CALIFORNIA MOSS LAUNING JETTY REPAIR PROJECT		U.S. ARMY CORPS OF ENGINEERS SAN FRANCISCO DISTRICT 450 GOLDEN GATE AVE. 1TH FLOOR SAN FRANCISCO, CA 94102-5004	
DESIGNED BY: F. SUN ISSUE DATE: OCTOBER 2022		DRAWN BY: A. KESCH SOLIDWORKS NO. 104789-0001		CHECKED BY: A. KESCH CONTRACT NO. WSP-7250003
MARK DESCRIPTION DATE		SUBMITTED BY: A. FAHMAN PROJECT NO. WSP725000X		SIZE: A3 AND D

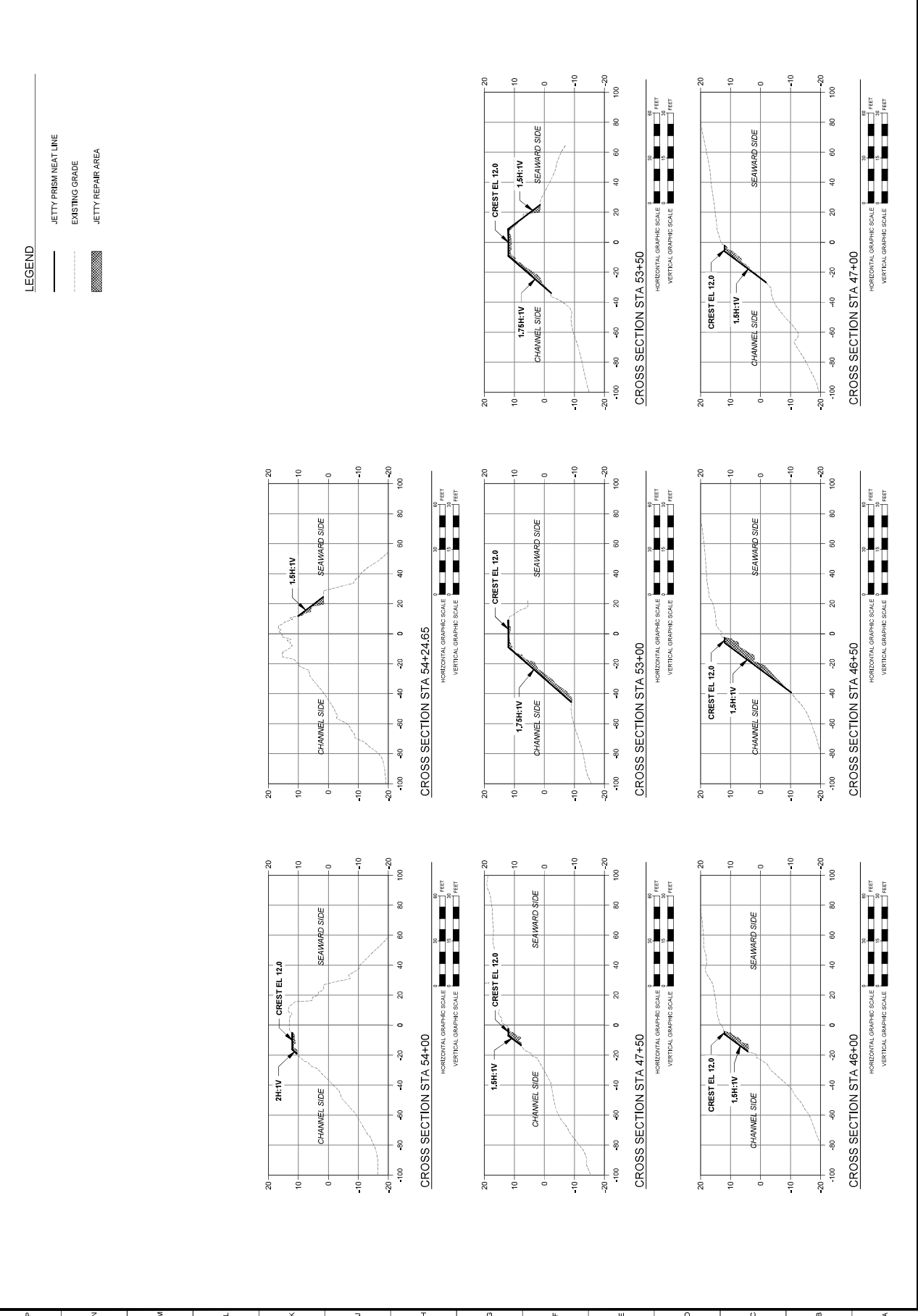


G1 PLAN VIEW - SOUTH JETTY STA 19+20 TO STA 26+00
SCALE: 1"=40'



A1 **PROFILE VIEW - SOUTH JETTY STA 19+20 TO STA 26+00**
SCALE: 1"=40' HORIZONTAL, 1"=5' VERTICAL

1 2 3 4 5 6 7 8 9 10 11 12 13 14 15 16 17 18 19 20



U.S. ARMY CORPS OF ENGINEERS
MONTREY COUNTY, CALIFORNIA
MOSS LANDING JETTY REPAIR PROJECT

CROSS SECTIONS
NORTH JETTY

DESIGNED BY
F. SUN
OCTOBER 2022

DRAWN BY
A. FARRHAN
CONTRACT NO.
W197222C0001

CHECKED BY
A. FARRHAN
CONTRACT NO.
W197222C0001

PROJECT NO.
S. HA

ISSUE DATE
OCTOBER 2022

SOLUTION NO.
W197222C0001

CONTRACT NO.
W197222C0001

PROJECT NO.
S. HA

SIZE
1" = 20'

DATE

U.S. ARMY CORPS OF ENGINEERS
SAN FRANCISCO, CA 94102-4041
450 GOLDEN GATE AVE 4TH FLOOR
SAN FRANCISCO, CA 94102-4041

U.S. ARMY CORPS OF ENGINEERS
SAN FRANCISCO DISTRICT
450 GOLDEN GATE AVE 4TH FLOOR
SAN FRANCISCO, CA 94102-4041

MARK

DESCRIPTION

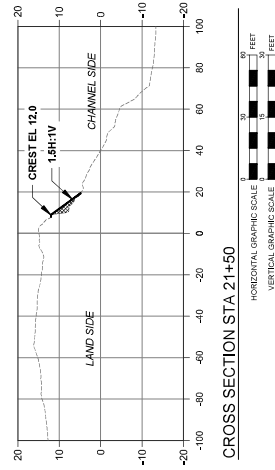
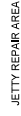
DATE

SHEET NO.
C-301

SHEET TOTAL
10

C:\users\BCE\AN\p00000000\emp\p00000000\BCE\CH-C00000000\11 OCT 2022 - 2.00pm

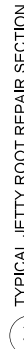
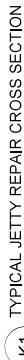
SOUTH JETTY
CROSS SECTIONS




MONTEREY COUNTY, CALIFORNIA MOSS LANDING JETTY REPAIR PROJECT TYPICAL JETTY REPAIR AND STONE PLACEMENT DETAILS	SHEET ID C-502
---	--------------------------

1. REPAIR EXISTING STONE AS NECESSARY TO ACHIEVE A SMOOTH INTERFACE WITHOUT DISCONTINUITIES BETWEEN NEW STONE AND EXISTING STONE.
2. RECONSTRUCTION WORK WILL BE REQUIRED AT AREAS OF DISCONTINUITY OR TO CORRECT EXISTING DEFECTIVE CONDITIONS DUE TO STONE BRIDGING, EXCESSIVE JOINTS, OR DEFICIENT STONE TO STONE INTERLOCK BUT ARE CURRENTLY WITHIN THE REPAIR TEMPLATE TOLERANCE.
3. IT IS NECESSARY TO ALLOW JOINTS IN THE NEW STONE TO FORM A TIGHT-JOINT, SMOOTH TRANSITION FROM EXISTING STRUCTURE TO THE NEW WORK WITH NO PROTRUSIONS, NOTCHES, OR SHARP SLOPE CHANGES.
4. REPAIR EXISTING JETTY STONE AS NECESSARY IN ORDER TO ACHIEVE A SMOOTH TRANSITION FROM EXISTING TO THE REPAIR. REPAIR SLOPE MAY BE ADJUSTED LOCALLY TO ACHIEVE STABLE TEAR-AT-JOINT OF REPAIR WITH EXISTING JETTY SURFACE.
5. FOR NORTH JETTY HEAD REPAIR, REPAIR EXISTING STONE AS NECESSARY TO ACHIEVE A SMOOTH TRANSITION FROM THE HEAD TO THE TRUNK TO ACHIEVE GOOD STONE-TO-STONE INTERLOCK.
6. FOR LANDWARD SIDE REPAIRS, EXCAVATE THE EXISTING BEACH TERRAIN TO ALLOW FOR TIE-IN OF REPAIRS SECTIONS TO EXISTING BEACH TERRAIN. EXCAVATION SHALL NOT EXCEED BELOW 3 FEET MAX.

SEE SHEET C-601 FOR JETTY DIMENSIONS AND SIDE SLOPES.



20 19 18 17 16 15 14 13 12 11 10 9 8 7 6 5 4 3 2 1



US Army Corps of Engineers

MARK	DESCRIPTION
DATE	

ISSUE DATE: OCTOBER 2022

DESIGNED BY: F. SUN

DRAWN BY: M. KIRSCH

CHECKED BY: A. FARHAN

PROJECT NO: W912722000001

CONTRACT NO: W912722000001

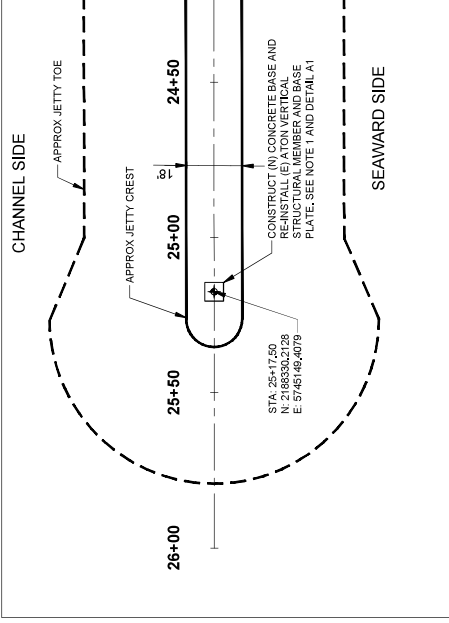
U.S. ARMY CORPS OF ENGINEERS
450 GOLDEN GATE AVE 4TH FLOOR
SAN FRANCISCO, CA 94102-4041

NAVIGATION AID DETAILS

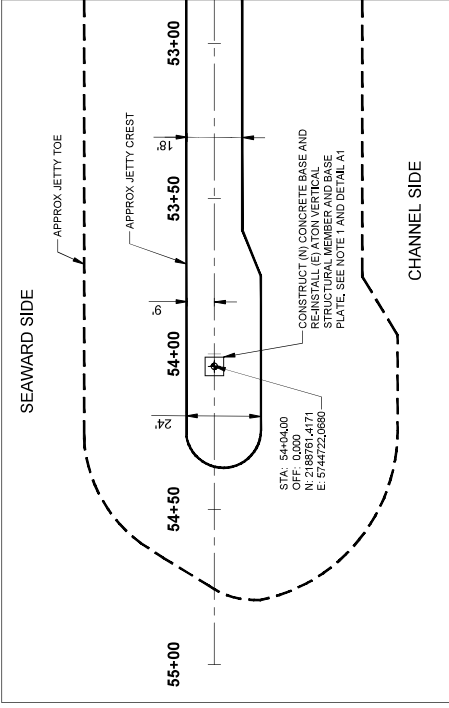
MONTREY COUNTY, CALIFORNIA
JITTY REPAIR PROJECT

SHEET ID: C-503

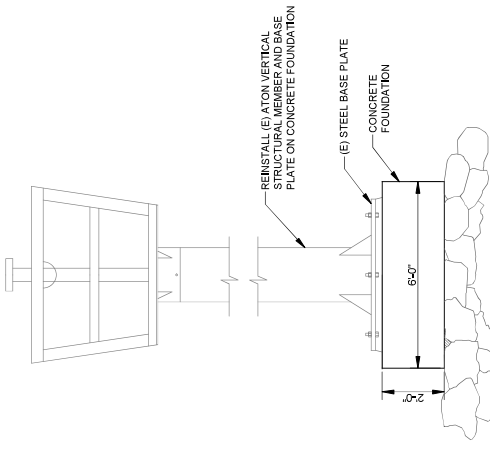
- SHEET NOTES:**
- COORDINATE WITH USGS PRIOR TO RE-INSTALLATION OF ATON TO VERIFY PLACEMENT LOCATION.
 - REMOVE AND STORE (E) ATON VERTICAL STRUCTURAL MEMBER AND BASE PLATE PRIOR TO CONSTRUCTION.
 - RE-INSTALL (E) ATON VERTICAL STRUCTURAL MEMBER AND BASE PLATE ON CONCRETE BASE.



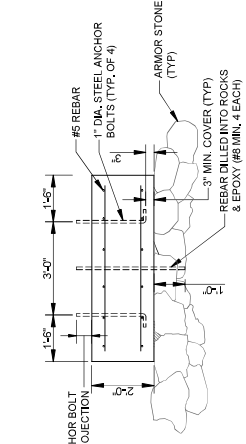
H10 PLAN VIEW - SOUTH JETTY ATON
SCALE: 1"=20'



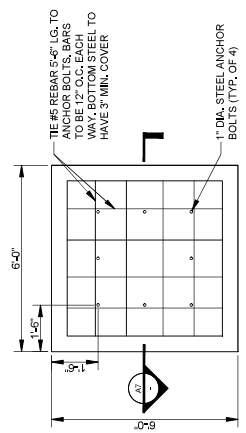
H1 PLAN VIEW - NORTH JETTY ATON
SCALE: 1"=20'



A14 ELEVATION: EXPOSED JETTY
STRUCTURE CONCRETE FOUNDATION
SCALE: 1/2"=1'-0"



A7 SECTION: EXPOSED JETTY
STRUCTURE CONCRETE FOUNDATION
SCALE: 1/2"=1'-0"



A1 PLAN DETAIL: EXPOSED JETTY
STRUCTURE CONCRETE FOUNDATION
SCALE: 1/2"=1'-0"