



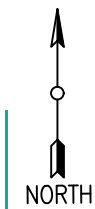
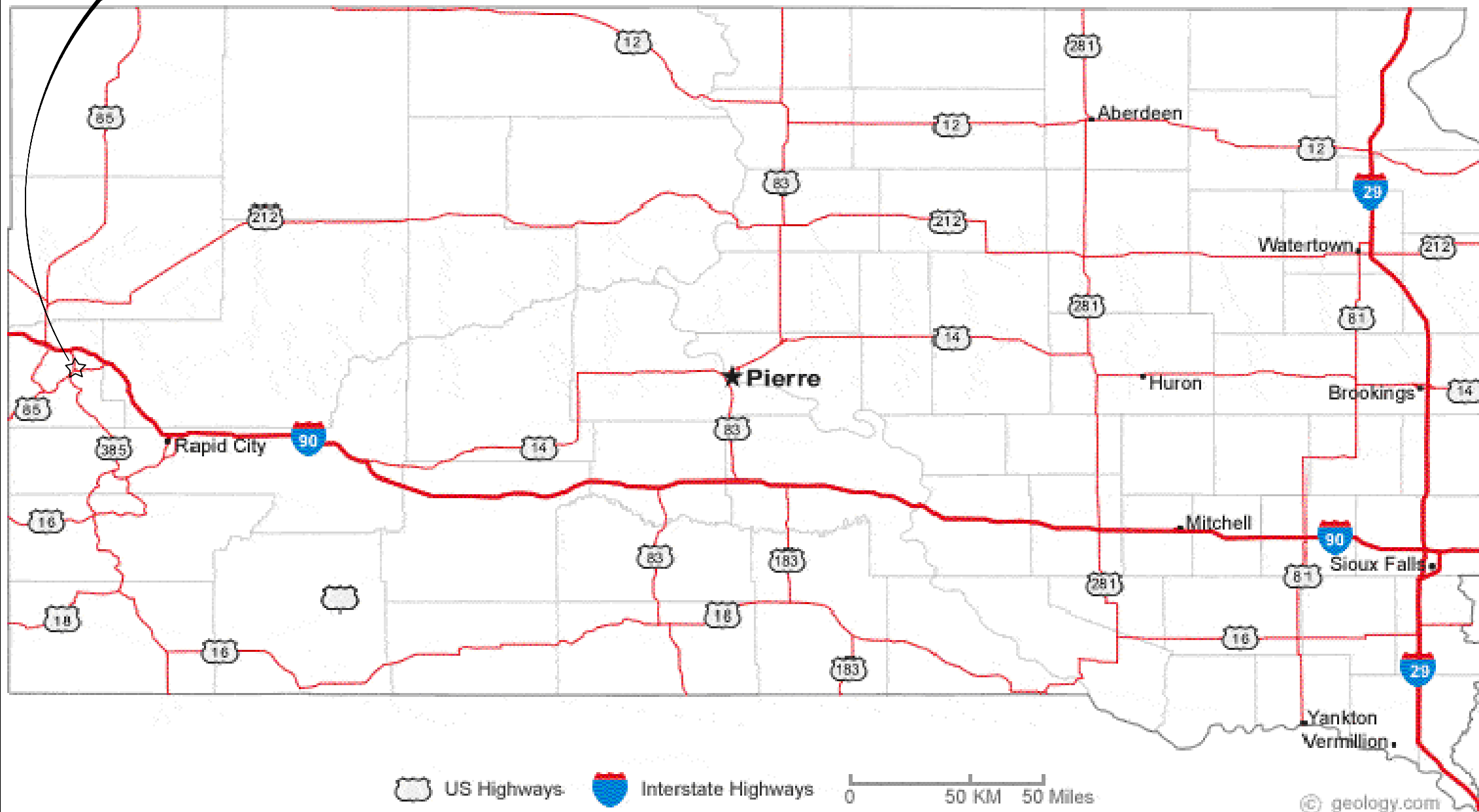
UNITED STATES DEPARTMENT OF THE INTERIOR
BUREAU OF LAND MANAGEMENT

GAOA SPRUCE GULCH ROAD REPAIR

LAWRENCE COUNTY, SOUTH DAKOTA

SOUTH DAKOTA FIELD OFFICE

PROJECT LOCATION
DEADWOOD, SOUTH DAKOTA



DRAWING INDEX

SHEET NO.	PAGE TITLE
1	COVER SHEET
2	LOCATION MAP
3	SITE MAP
4 - 5	DETAIL SHEETS
6 - 8	PLANS SHEETS

STATE REFERENCE MAP



UNITED STATES DEPARTMENT OF THE INTERIOR
BUREAU OF LAND MANAGEMENT

COVER SHEET
GAOA SPRUCE GULCH ROAD REPAIR

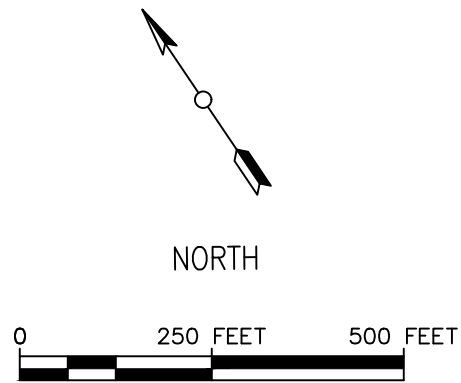
SOUTH DAKOTA

SOUTH DAKOTA FIELD OFFICE


AUTOCAD NAME:	2022, GAOA SPRUCE GULCH ROAD.DWG	MARK	REVISION	DATE	APPROVED
PROJECT NO:					
DESIGN OFFICE:	EASTERN MONTANA-DAKOTAS DISTRICT OFFICE				
RECOMMENDED BY:	TANNER CAHILL				
APPROVED BY:	TANNER CAHILL				
	DATE: 4/29/2022				
	DATE: 4/29/2022				

SHEET 1 OF 8

S:\SUPPORT_SERVICES\ENGINEERING\SDO\ROADS\2022, GAOA SPRUCE GULCH ROAD\CADD\DWG\2022, GAOA SPRUCE GULCH ROAD.DWG



LOCATION MAP



UNITED STATES DEPARTMENT OF THE INTERIOR
BUREAU OF LAND MANAGEMENT

LOCATION MAP

GAOA SPRUCE GULCH ROAD REPAIR

SOUTH DAKOTA FIELD OFFICE

AUTOCAD NAME:	2022, GAOA SPRUCE GULCH ROAD.DWG	MARK	REVISION	DATE	APPROVED
PROJECT NO:					
DESIGN OFFICE:	EASTERN MONTANA-DAKOTAS DISTRICT OFFICE				
RECOMMENDED BY:	TANNER CAHILL				
APPROVED BY:	TANNER CAHILL				

SHEET 2 OF 8

S:\SUPPORT_SERVICES\ENGINEERING\SDO\ROADS\ROAD\CADD\DWG\2022, GAOA SPRUCE GULCH ROAD\2022, GAOA SPRUCE GULCH ROAD.DWG



AUTOCAD NAME: 2022, GAOA SPRUCE GULCH ROAD.DWG		MARK	REVISION	DATE	APPROVED
PROJECT NO:					
DESIGN OFFICE: EASTERN MONTANA-DAKOTAS DISTRICT OFFICE					
RECOMMENDED BY: TANNER CAHILL					
DATE: 4/29/2022					
APPROVED BY: TANNER CAHILL					
DATE: 4/29/2022					

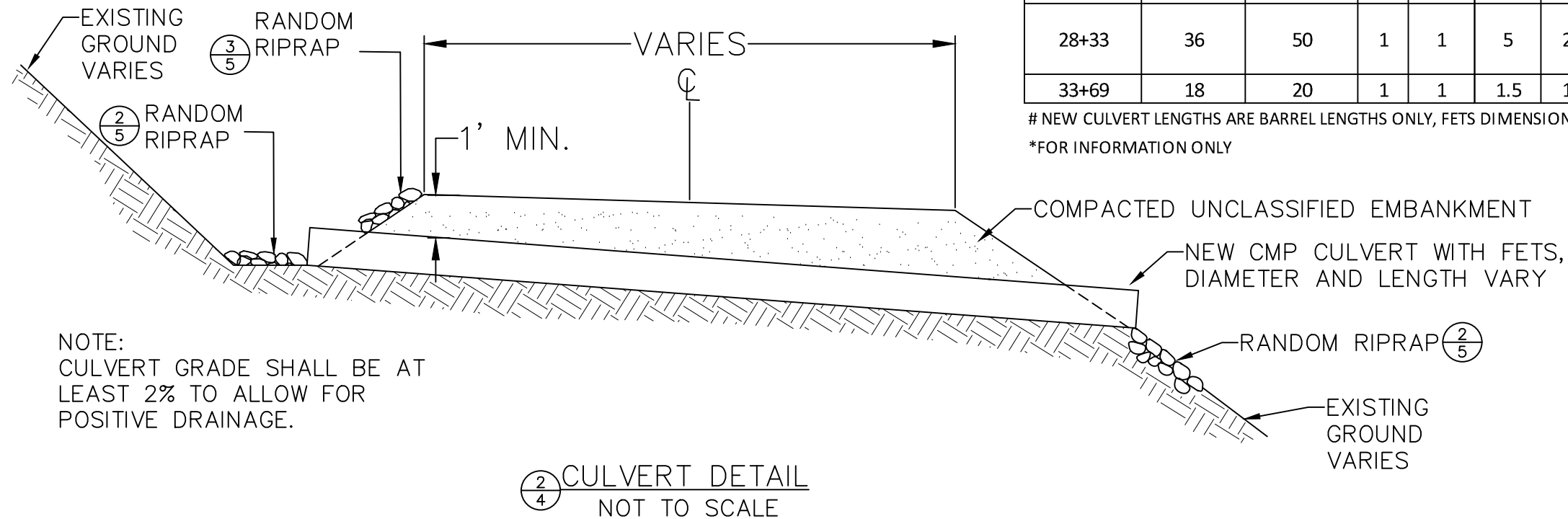
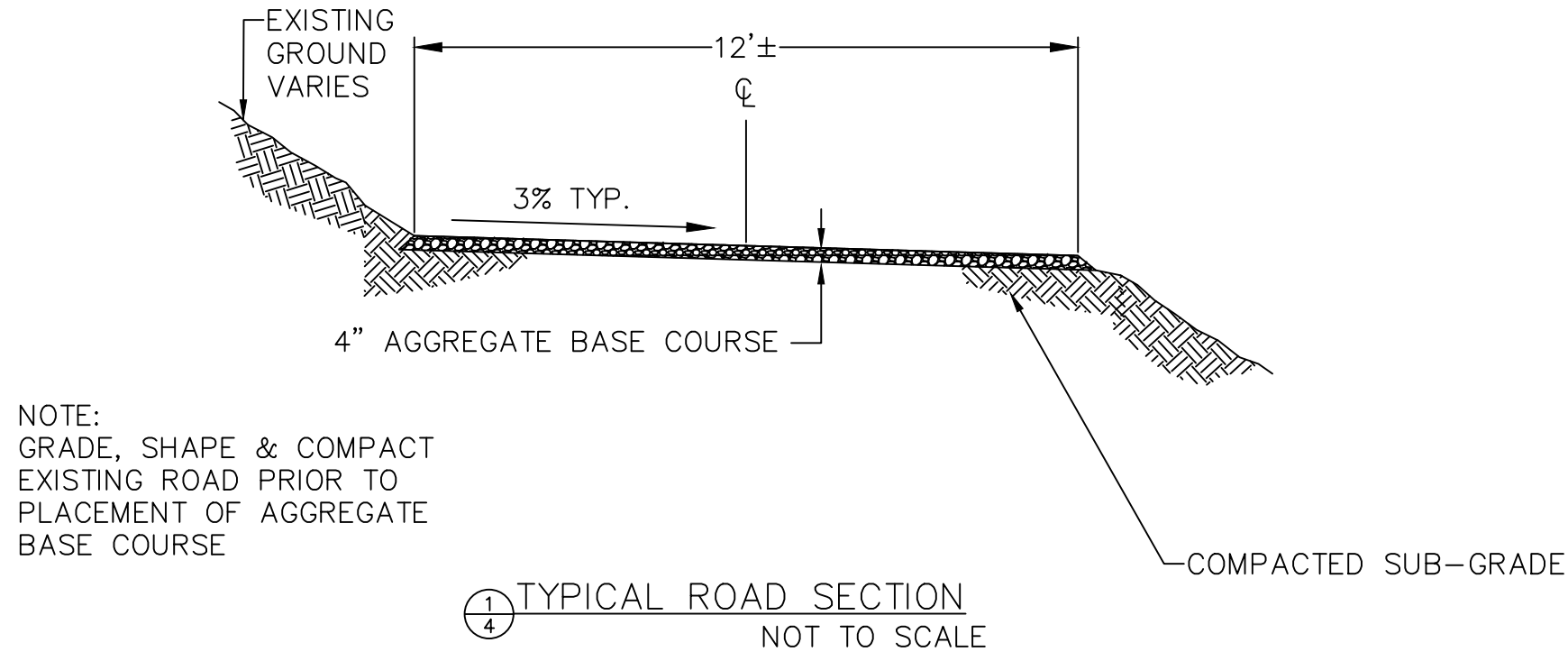
UNITED STATES DEPARTMENT OF THE INTERIOR
BUREAU OF LAND MANAGEMENT

SITE MAP

GAOA SPRUCE GULCH ROAD REPAIR

SOUTH DAKOTA FIELD OFFICE

S:\SUPPORT_SERVICES\ENGINEERING\SDO\ROADS\ROAD\CADD\DWG\2022_GAOA SPRUCE GULCH ROAD.DWG



CULVERT SUMMARY							
STATION	NEW CULVERT PIPE (IN.)	16 GAUGE CMP (FT.) #	END SECTIONS		RIPRAP QUANTITIES (CU. YD.)*		REMARKS
			LEFT	RIGHT	INLET	OUTLET	
9+88	24	20	1	1	1.5	1.5	REMOVE EXISTING CULVERT IF FOUND
13+15	18	20	1	1	1.5	1.5	REMOVE EXISTING CULVERT IF FOUND
22+44	36	40	1	1	2.5	2.5	REMOVE EXISTING CULVERT IF FOUND
26+45	24	30	1	1	1.5	1.5	REMOVE EXISTING CULVERT IF FOUND
28+33	36	50	1	1	5	2.5	REMOVE EXISTING CULVERT IF FOUND, DOUBLE QUANTITY OF RIPRAP ON INLET BANK
33+69	18	20	1	1	1.5	1.5	REMOVE EXISTING CULVERT IF FOUND

NEW CULVERT LENGTHS ARE BARREL LENGTHS ONLY, FETS DIMENSIONS NOT INCLUDED. SLOPE ALL CULVERTS AT 2% MIN.

*FOR INFORMATION ONLY



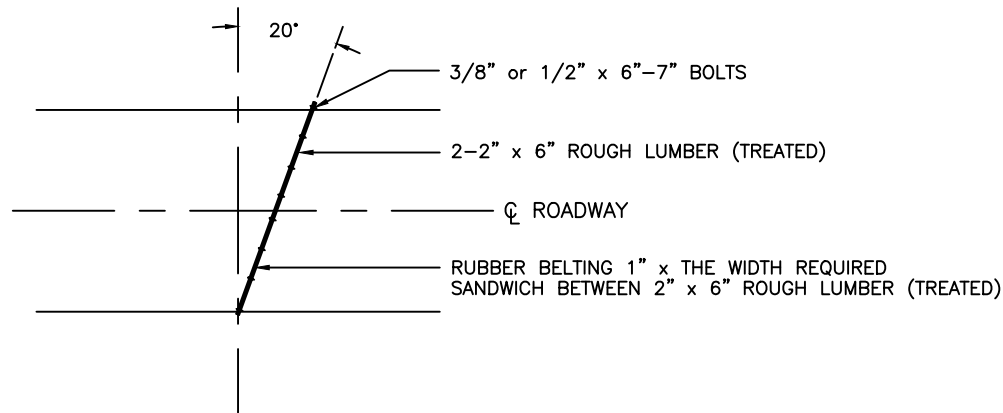
UNITED STATES DEPARTMENT OF THE INTERIOR
BUREAU OF LAND MANAGEMENT

DETAIL SHEET
GAOA SPRUCE GULCH ROAD REPAIR

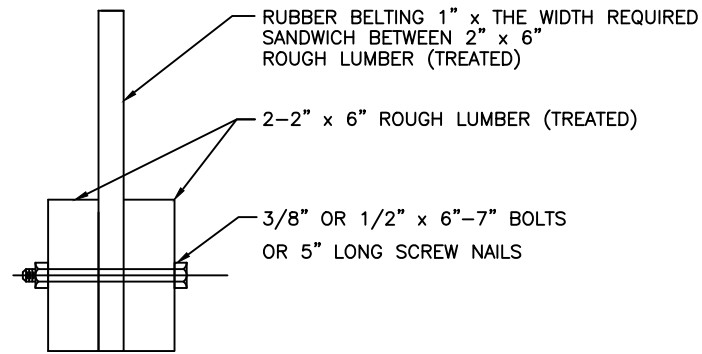
SOUTH DAKOTA FIELD OFFICE

APPROVED	DATE	REVISION	MARK	AUTOCAD NAME:	PROJECT NO:	DESIGN OFFICE:	RECOMMENDED BY:	APPROVED BY:
				2022_GAOA SPRUCE GULCH ROAD.DWG		EASTERN MONTANA-DAKOTAS DISTRICT OFFICE	TANNER CAHILL	TANNER CAHILL
							DATE: 4/29/2022	DATE: 4/29/2022

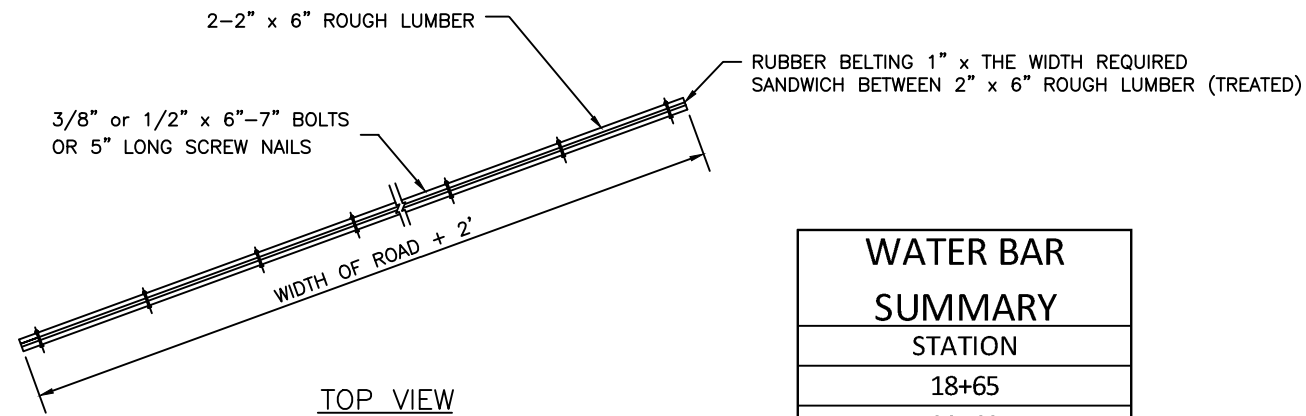
S:\SUPPORT_SERVICES\ENGINEERING\SDFO\ROADS\ROAD\CADD\DWG\2022, GAOA SPRUCE GULCH ROAD\DWG 2022, GAOA SPRUCE GULCH ROAD.DWG



INSTALLATION PLAN



END VIEW

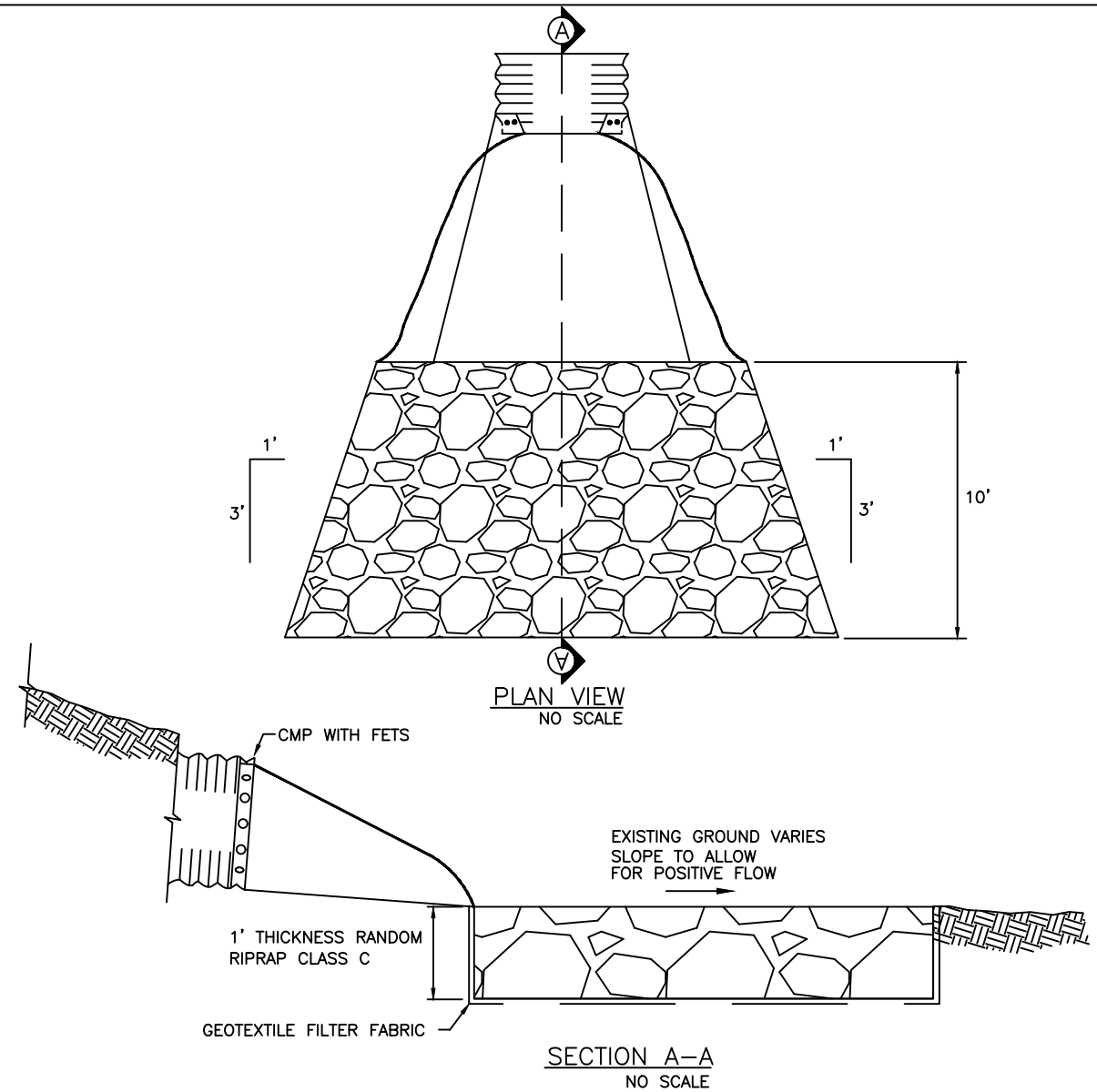


TOP VIEW

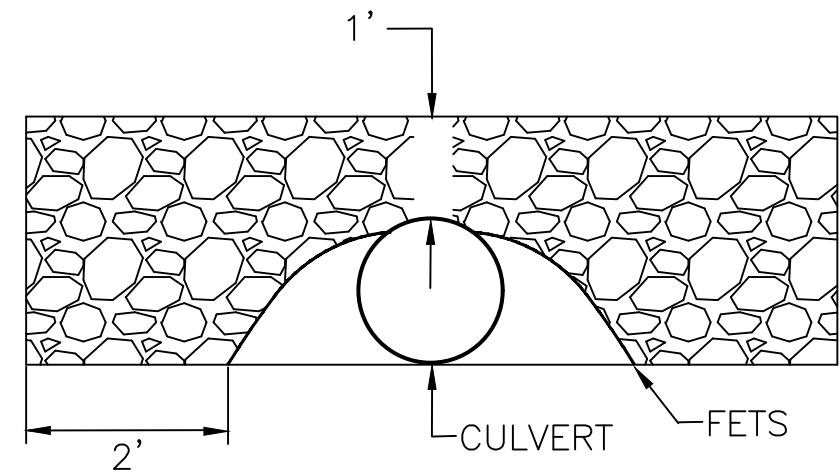
WATER BAR SUMMARY

STATION
18+65
20+60
35+04
36+53
52+64

1
5 WATER BAR DETAIL

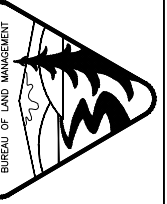


2
5 RIPRAP SPLASH PAD DETAIL



NOTE:
1' THICKNESS RANDOM RIPRAP CLASS C
ATOP GEOTEXTILE FILTER FABRIC

3
5 INLET RIPRAP DETAIL



UNITED STATES DEPARTMENT OF THE INTERIOR
BUREAU OF LAND MANAGEMENT

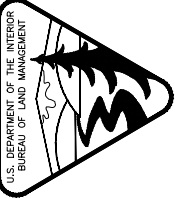
DETAIL SHEET
GAOA SPRUCE GULCH ROAD REPAIR
SOUTH DAKOTA FIELD OFFICE

APPROVED	DATE	REVISION	MARK	AUTOCAD NAME:	PROJECT NO:	DESIGN OFFICE:	RECOMMENDED BY:	APPROVED BY:
				2022, GAOA SPRUCE GULCH ROAD.DWG		EASTERN MONTANA-DAKOTAS DISTRICT OFFICE	TANNER CAHILL	TANNER CAHILL
							DATE: 4/29/2022	DATE: 4/29/2022

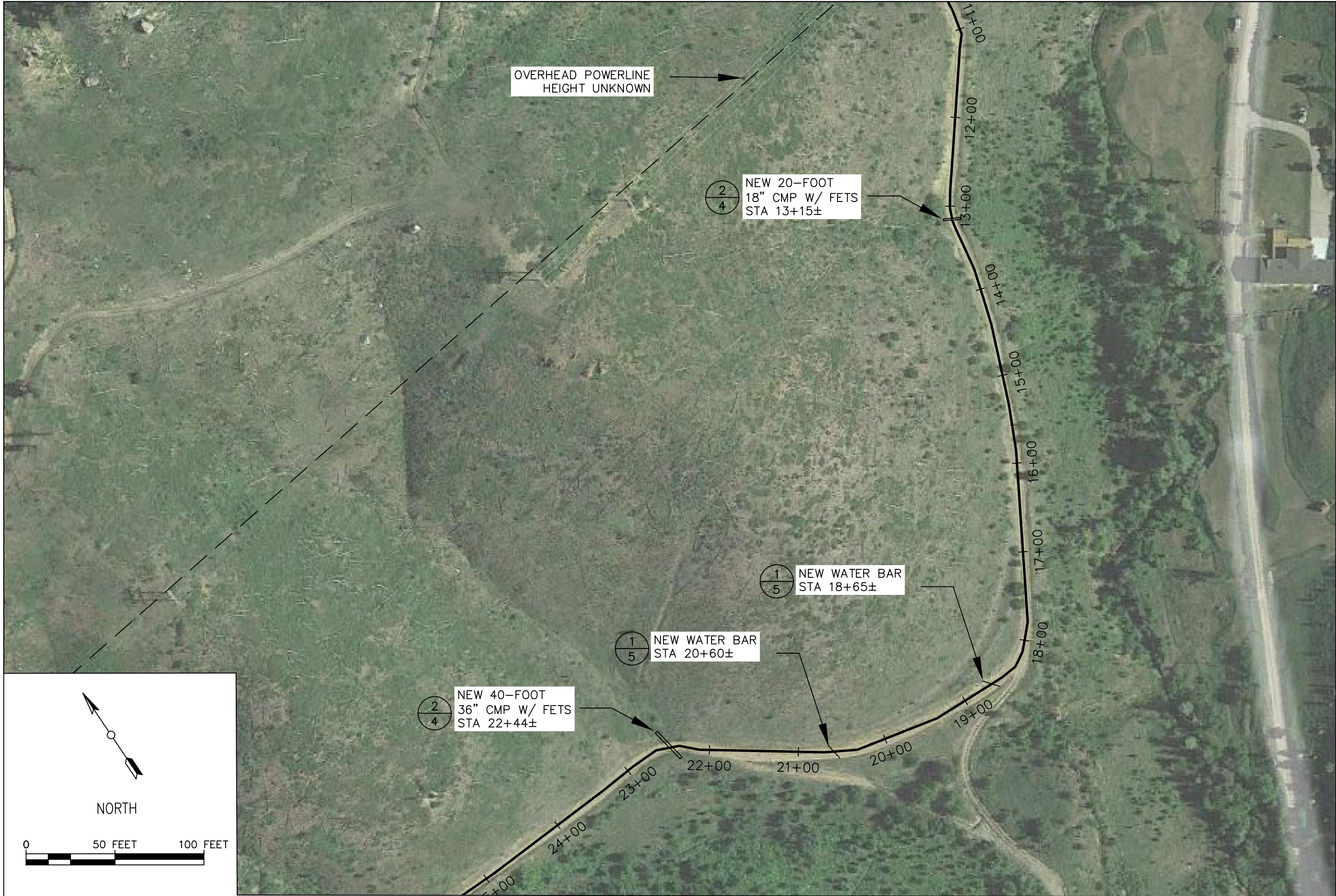
S:\SUPPORT_SERVICES\ENGINEERING\SDO\ROADS\2022, GAOA SPRUCE GULCH ROAD\CADD\DWG\2022, GAOA SPRUCE GULCH ROAD.DWG



SITE MAP

UNITED STATES DEPARTMENT OF THE INTERIOR BUREAU OF LAND MANAGEMENT							
PLAN SHEET				GAOA SPRUCE GULCH ROAD REPAIR			
SOUTH DAKOTA FIELD OFFICE							
AUTOCAD NAME:	2022, GAOA SPRUCE GULCH ROAD.DWG	MARK	REVISION	DATE	APPROVED		
PROJECT NO:							
DESIGN OFFICE:	EASTERN MONTANA-DAKOTAS DISTRICT OFFICE						
RECOMMENDED BY:	TANNER CAHILL						
DATE:	4/29/2022						
APPROVED BY:	TANNER CAHILL						
DATE:	4/29/2022						

S:\SUPPORT_SERVICES\ENGINEERING\SDFO\ROADS\2022, GAOA SPRUCE GULCH ROAD\CADD\DWG\2022, GAOA SPRUCE GULCH ROAD.DWG



SITE MAP

AUTOCAD NAME: 2022, GAOA SPRUCE GULCH ROAD.DWG		MARK	REVISION	DATE	APPROVED
PROJECT NO:					
DESIGN OFFICE: EASTERN MONTANA-DAKOTAS DISTRICT OFFICE					
RECOMMENDED BY: TANNER CAHILL					
DATE: 4/29/2022					
APPROVED BY: TANNER CAHILL					
DATE: 4/29/2022					

U.S. DEPARTMENT OF THE INTERIOR
BUREAU OF LAND MANAGEMENT

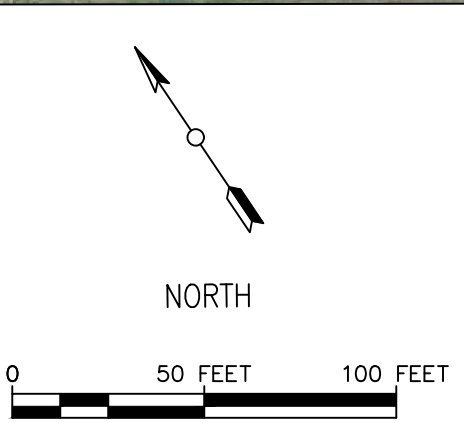
UNITED STATES DEPARTMENT OF THE INTERIOR
BUREAU OF LAND MANAGEMENT

PLAN SHEET

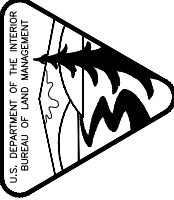
GAOA SPRUCE GULCH ROAD REPAIR

SOUTH DAKOTA FIELD OFFICE

S:\SUPPORT_SERVICES\ENGINEERING\SDO\ROADS\ROADS\CADD\DWG\2022, GAOA SPRUCE GULCH ROAD\2022, GAOA SPRUCE GULCH ROAD.DWG



SITE MAP



UNITED STATES DEPARTMENT OF THE INTERIOR
BUREAU OF LAND MANAGEMENT

PLAN SHEET

GAOA SPRUCE GULCH ROAD REPAIR

SOUTH DAKOTA FIELD OFFICE

AUTOCAD NAME:	2022, GAOA SPRUCE GULCH ROAD.DWG	MARK	REVISION	DATE	APPROVED
PROJECT NO:					
DESIGN OFFICE:	EASTERN MONTANA-DAKOTAS DISTRICT OFFICE				
RECOMMENDED BY:	TANNER CAHILL				
APPROVED BY:	TANNER CAHILL				

SHEET **8** OF **8**