

U.S. COAST GUARD
CIVIL ENGINEERING
CEU PROVIDENCE



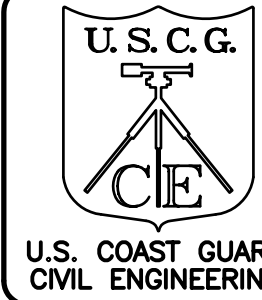
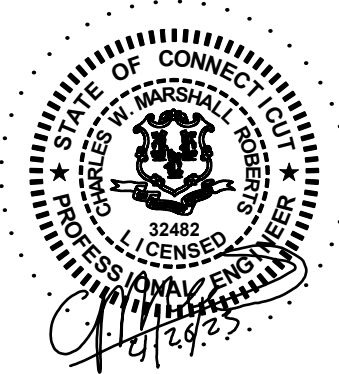
Austin
Brockenbrough

ENGINEERING + CONSULTING

1011 Boulder Springs Drive, Suite 200 | Richmond, Virginia 23225
804.592.3900 main | 804.592.3901 fax
www.brockenbrough.com

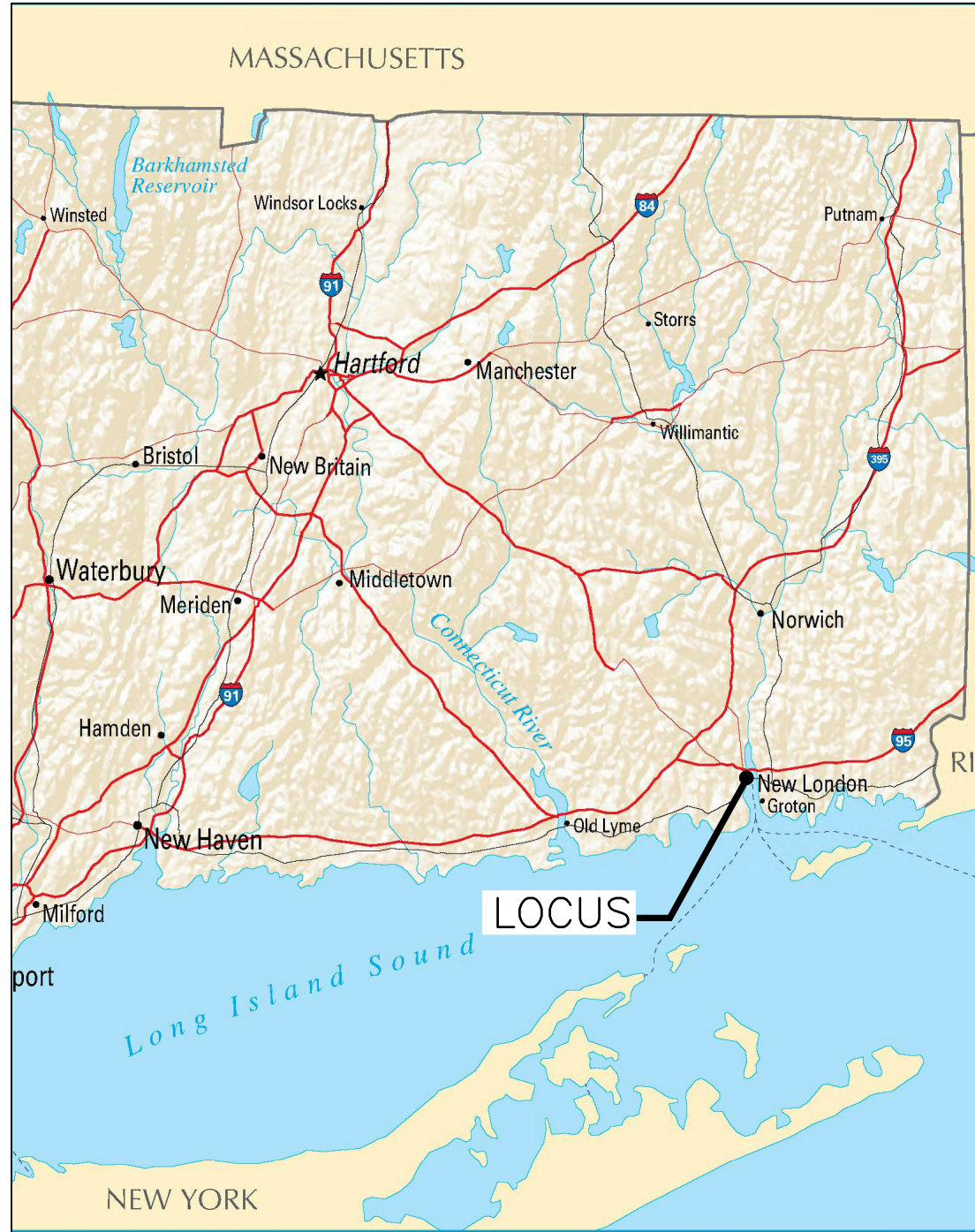
DRAWING INDEX

SHEET ID	SHEET NO.	SHEET TITLE
G-001	1	COVER SHEET
G-101	2	NOTES
C-101	3	SITE PLAN
C-102	4	CIVIL PLAN
C-103	5	PROPOSED DREDGE PLAN
C-301	6	PROPOSED DREDGE SECTIONS
S-101	7	EXISTING/DEMOLITION PIER PLAN AND SECTION
S-102	8	PROPOSED PIER PLAN AND SECTION
S-103	9	FENDER CUSHION PLANS
S-104	10	FORCE PROTECTION PLAN
S-501	11	DETAILS
S-502	12	DETAILS
P-101	13	PLUMBING SITE PLAN
P-501	14	PLUMBING DETAILS
P-502	15	RAILROAD DETAILS
E-001	16	ELECTRICAL LEGEND, NOTES, AND ABBREVIATIONS
E-101	17	ELECTRICAL SITE PLAN
E-401	18	ELECTRICAL PARTIAL PLAN
E-501	19	ELECTRICAL DETAILS

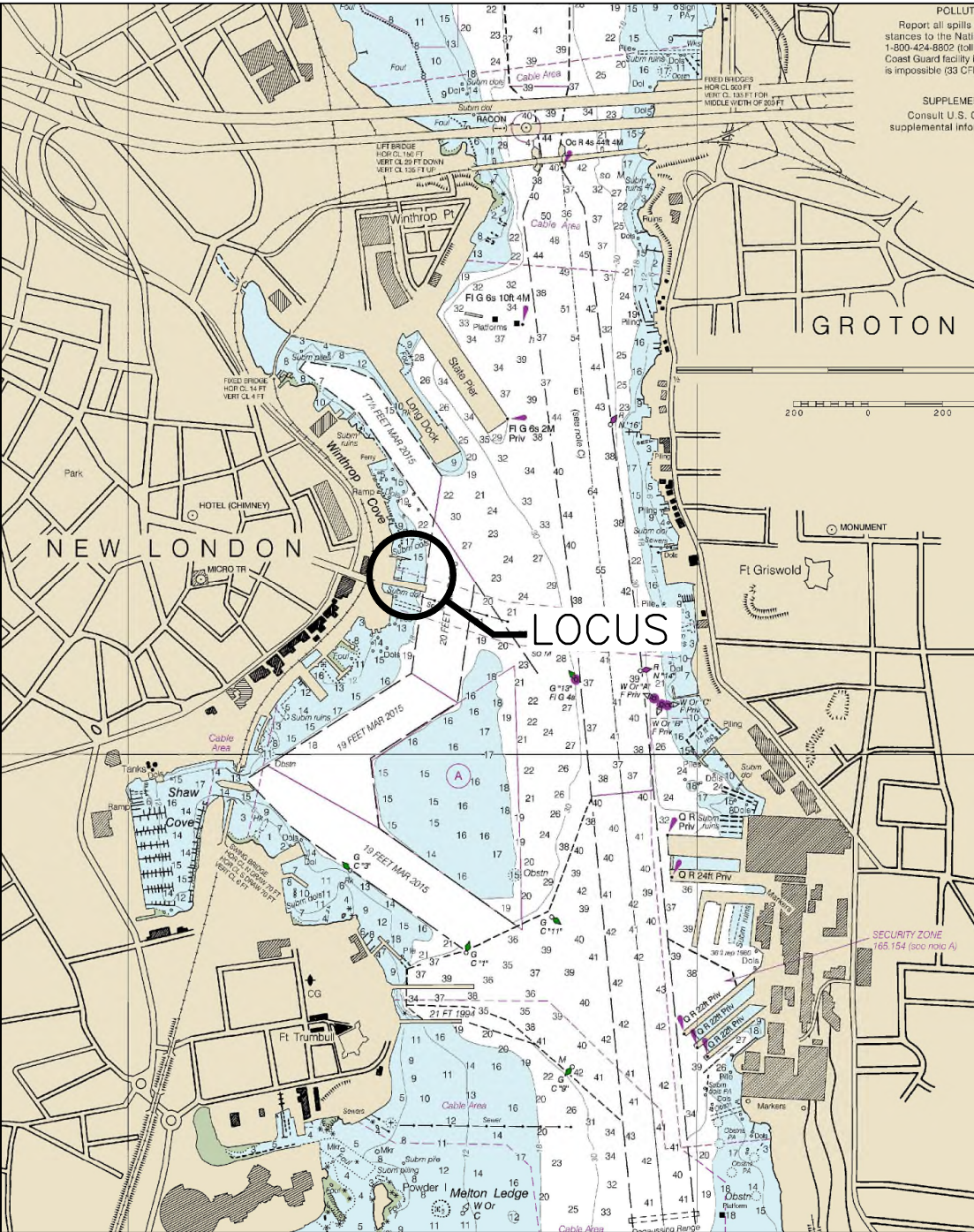


DATE	04/26/23
100% FOR CONSTRUCTION	
MARK DESCRIPTION	
SCALE: AS SHOWN	
PLOTTING SCALE: 1:1	

NEW HOME PORT FOR USCG CUTTER EAGLE
NEW LONDON, CONNECTICUT
PROJECT NUMBER 16192309



VICINITY MAP
SCALE: NTS



LOCATION MAP
SCALE: NTS

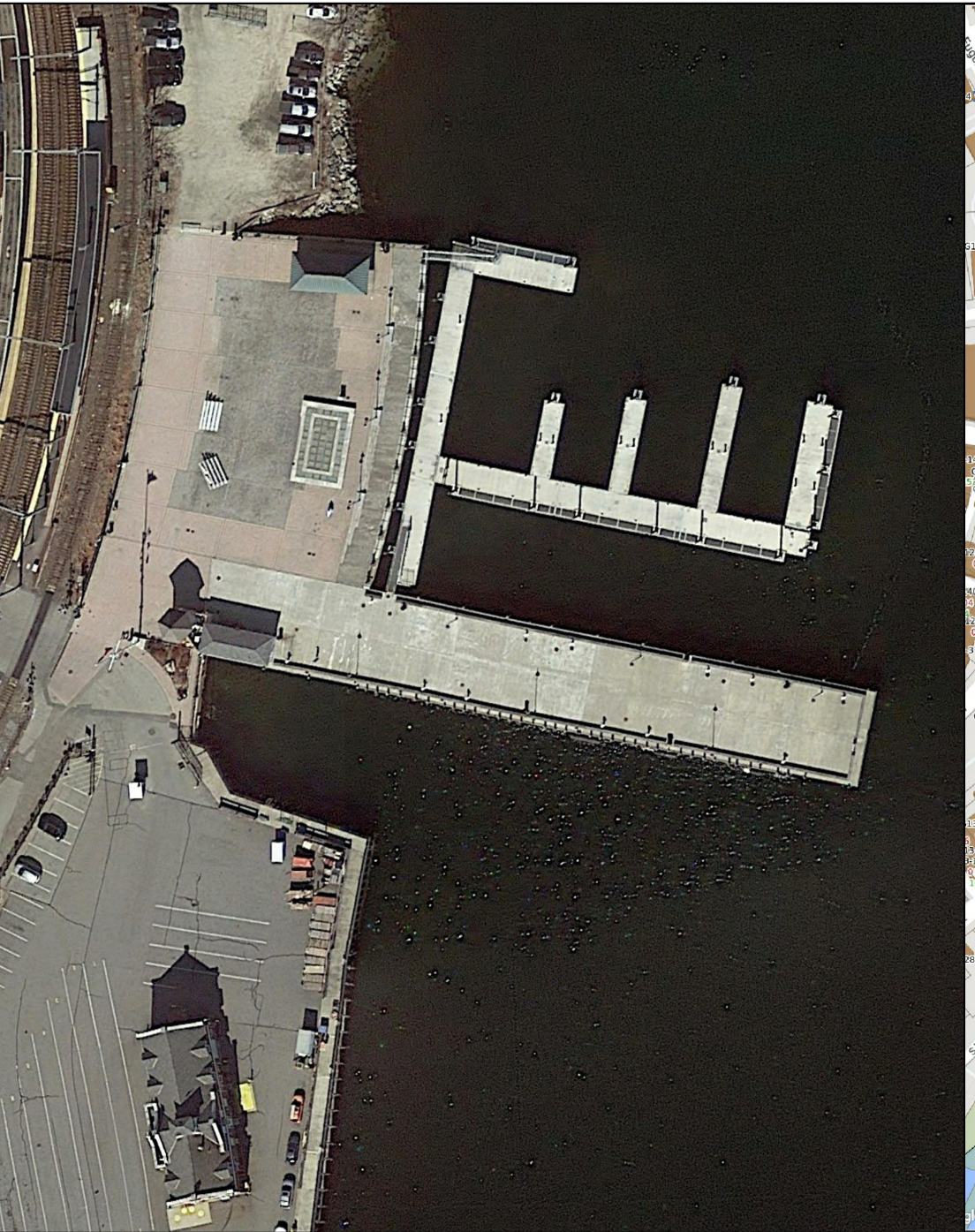
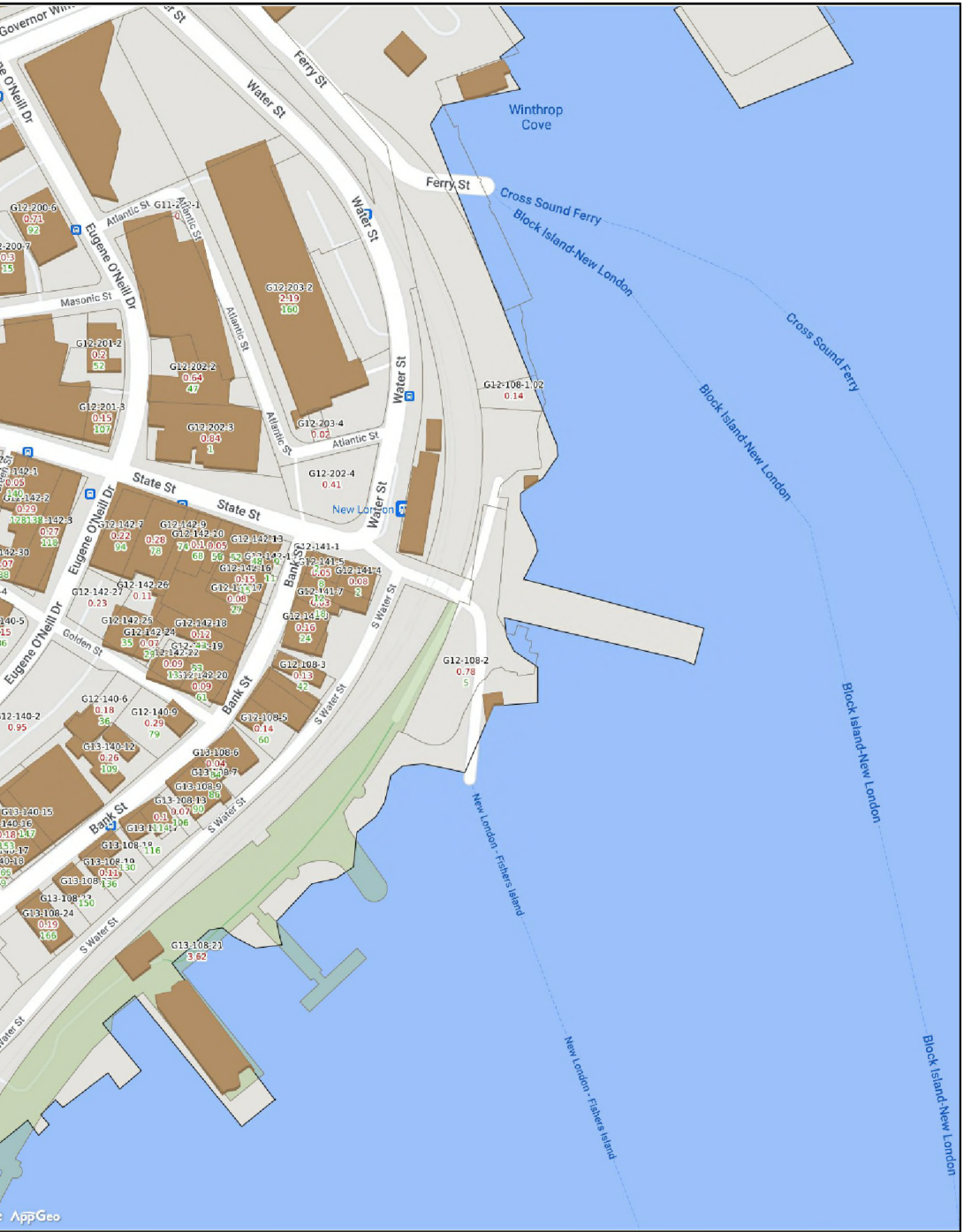


PHOTO
SCALE: NTS



PROPERTY MAP
SCALE: NTS

MICHAEL P. CAROSOTTO, PE 04/26/2023
APPROVING OFFICER DATE

MICHAEL P. CAROSOTTO, PE
TECHNICAL DIRECTOR

DAVID GLASS, PE
BRANCH CHIEF

A/E COMPANY:
CHILDS ENGINEERING CORPORATION
600 MAIN STREET
NEW LONDON, CT 06320
A/E PROJECT NO.:
2953-21.01
CONSULTING A/E:

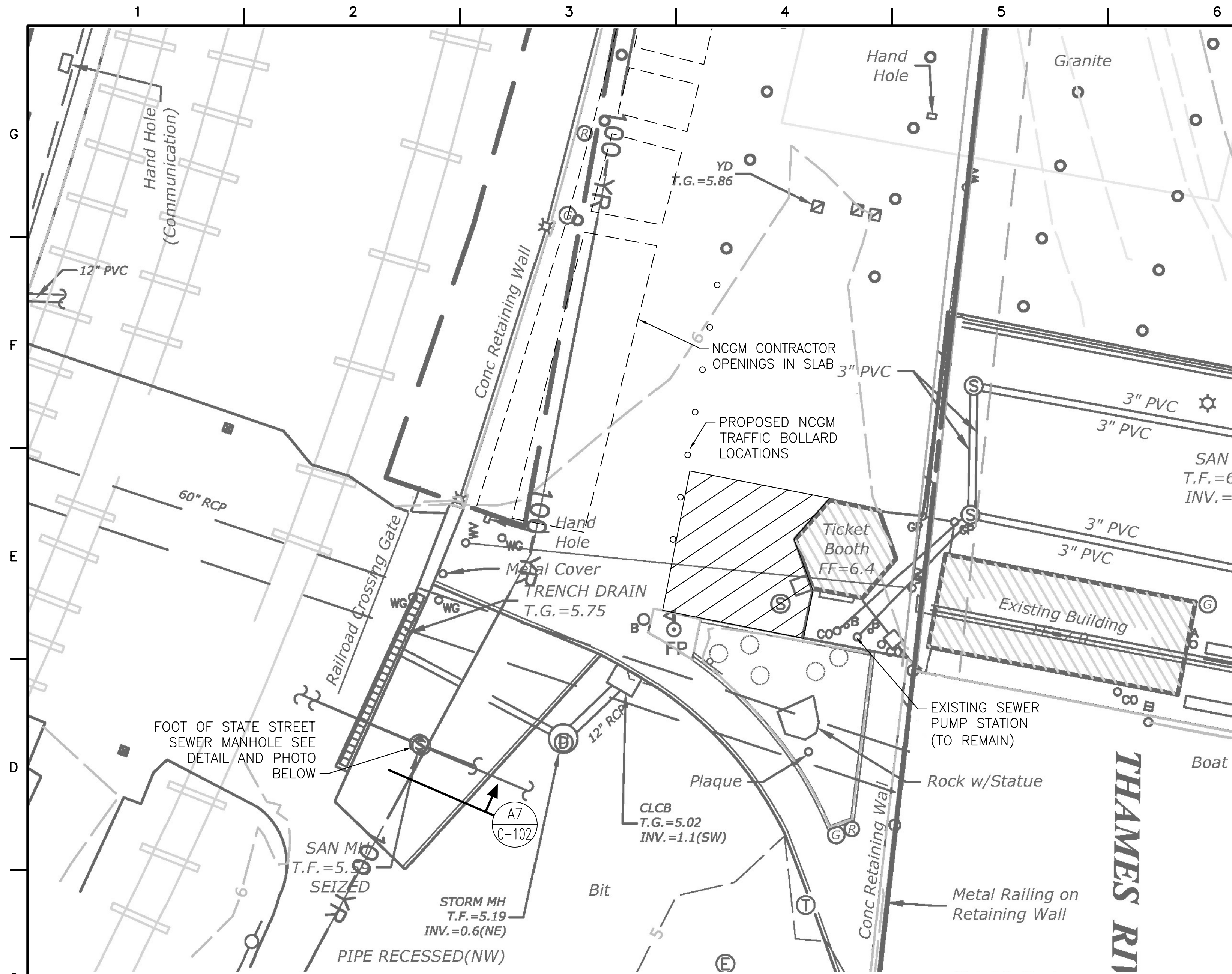
CIVIL ENGINEERING UNIT PROVIDENCE
475 KILVERT ST., SUITE 100
WARWICK, RI 02886
PROJECT ENGINEER:
CHARLIE M. ROBERTS
DESIGNED BY:
LPL
DRAWN BY:
TEO
CHECKED BY:
CMR

USCG PROJECT NO.
16190401
USCG DRAWING NO.
P16190401G001
USCG FILENAME
P16190401G-001.DWG
SHEET 01 OF 19

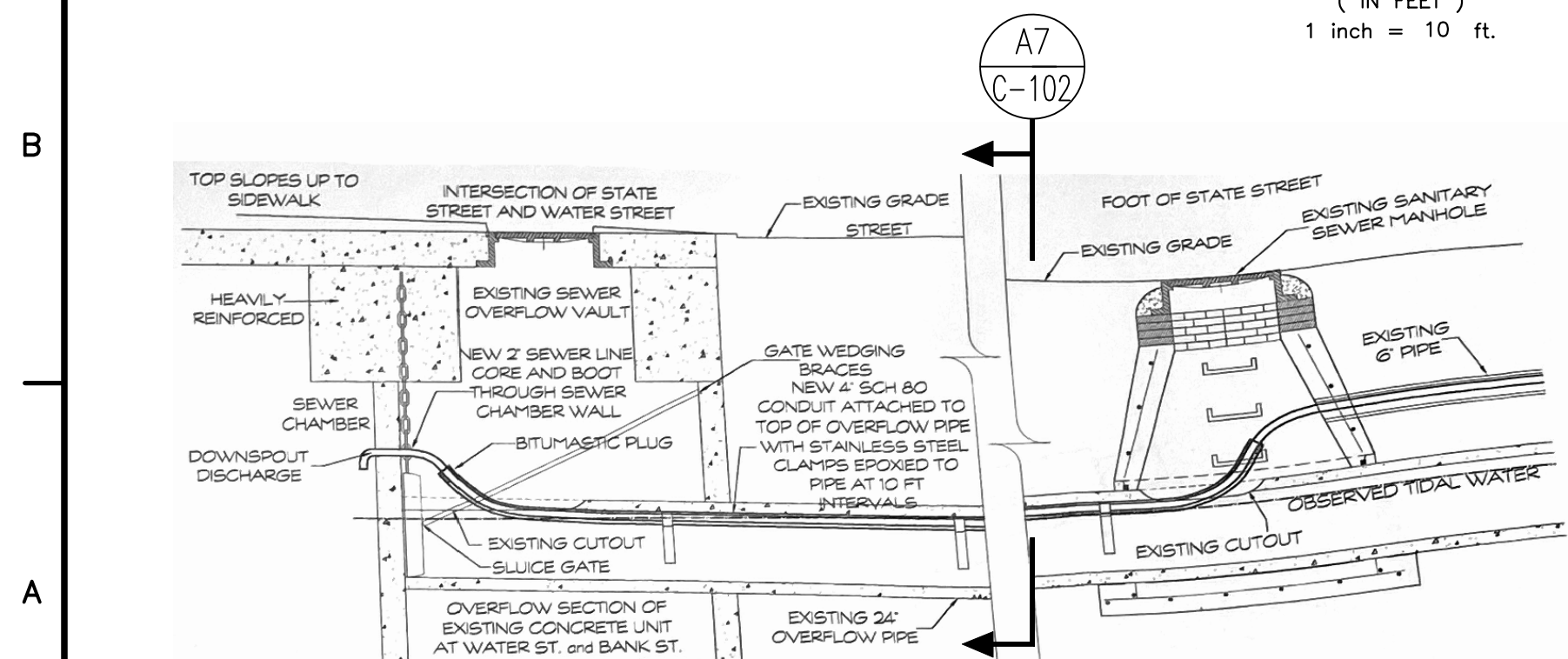
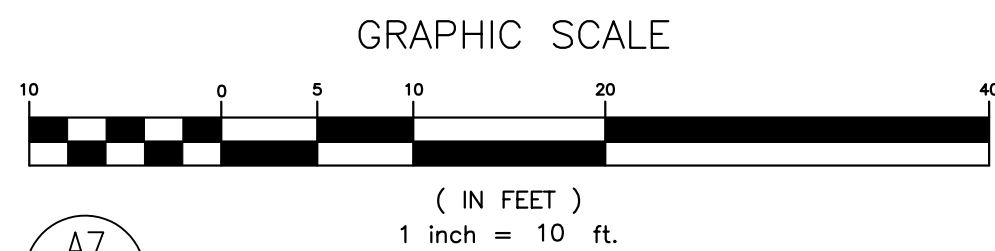
NEW HOME PORT FOR USCG CUTTER EAGLE
COAST GUARD MUSEUM-USCGC EAGLE
NEW LONDON CT

SHEET ID
CITY PIER
G-001

GENERAL
COVER SHEET



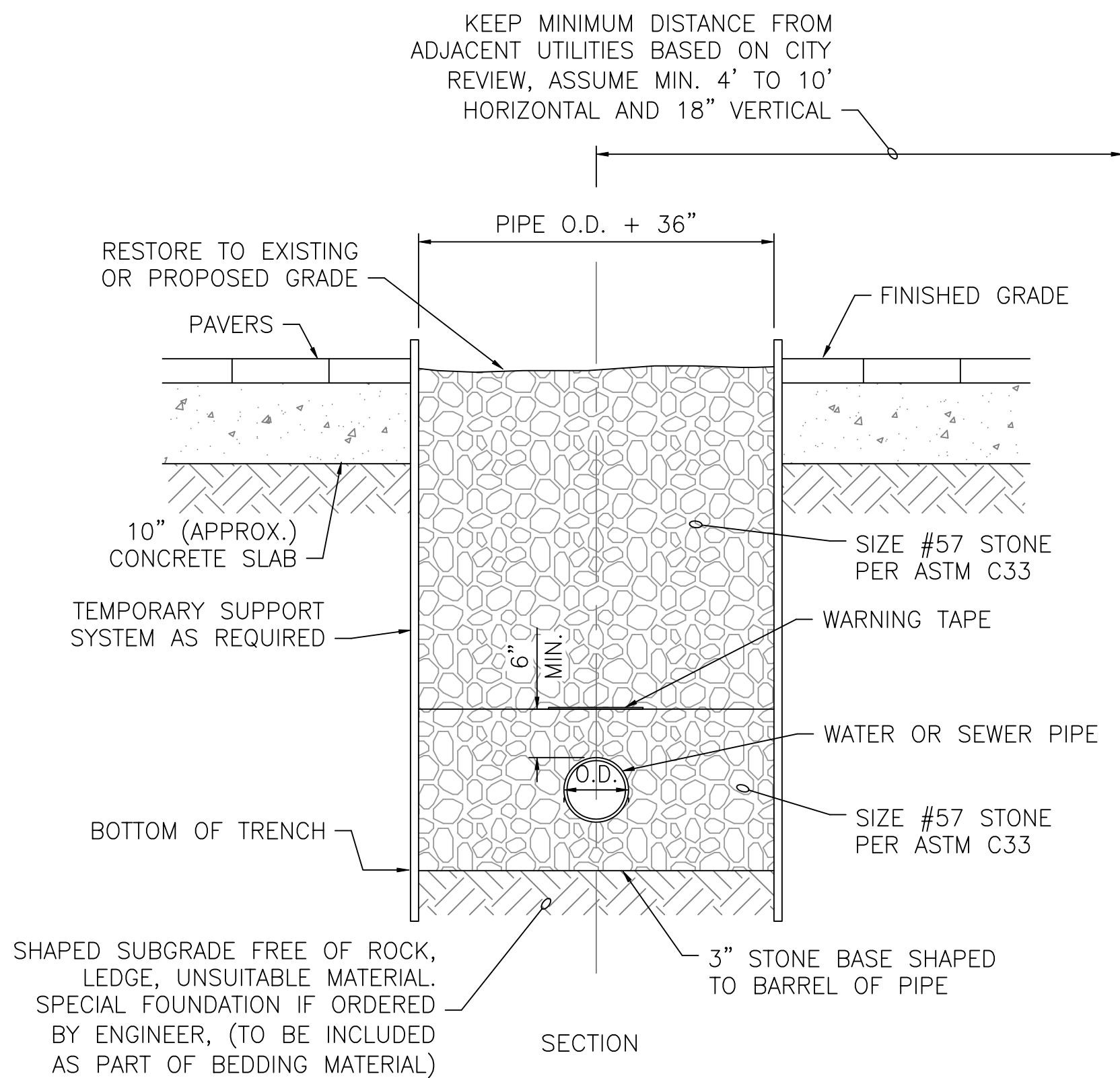
CIVIL PLAN
SCALE: 1" = 10'-0"



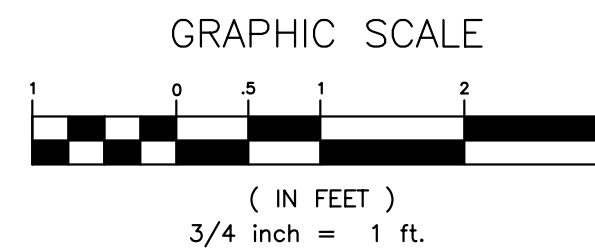
A2 SEWER LINE DETAIL
SCALE: NONE

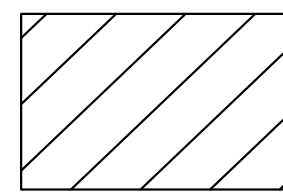


FOOT OF STATE STREET MANHOLE
LOOKING DOWN, WEST IS TOP OF IMAGE



E8 WATER OR SEWER PIPE TRENCH DETAIL
SCALE: 3/4" = 1'-0"



 = REMOVE PAVERS, SAW CUT CONCRETE SLAB, AND EXCAVATE TO INSTALL NEW PUMP STATION AND WATER METER VAULT

NOTES:

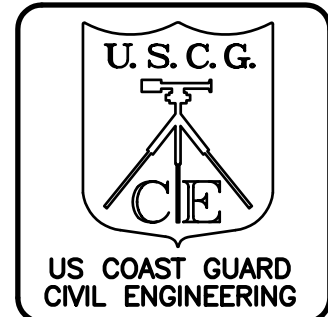
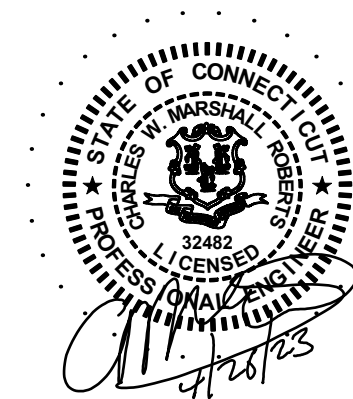
1. CONTRACTOR TO COORDINATE ALL CIVIL AND UTILITY WORK WITH NCGM CONTRACTOR.
2. CONTRACTOR TO CONDUCT UTILITY SURVEY PRIOR TO START OF WORK.
3. AREA OF EXCAVATION HAS A CONCRETE SLAB WITH PAVERS PLACED ON TOP.
4. AS PART OF NCGM WORK THE PAVERS ARE BEING REPLACED AND UTILITY AND TRAFFIC BOLLARD WORK IS BEING DONE IN THIS AREA.
5. EXISTING SEWER PUMP STATION AND PIPING FROM BATHROOMS AND MARINA TO REMAIN. CONTRACTOR MUST LOCATE PRIOR TO UTILITY WORK.
5. SEE SHEET G-101 FOR COORDINATION NOTES.

REFERENCES:

PLAN REFERENCED FROM DRAWING TITLED "NATIONAL COAST GUARD MUSEUM, EXISTING CONDITIONS PLAN" BY SLR INTERNATIONAL CORP., CHESHIRE, CT. DATED 12/02/2022.

DETAILS REFERENCED FROM DRAWING TITLED "SEWER PLAN FERRY TERMINAL EXPANSION NEW LONDON, CONNECTICUT" BY DOCKO, INC. MYSTIC, CT.

A7 PIPE SECTION
SCALE: NONE



MARK	DESCRIPTION	DATE	SCALE
100%	FOR CONSTRUCTION	04/26/23	AS SHOWN

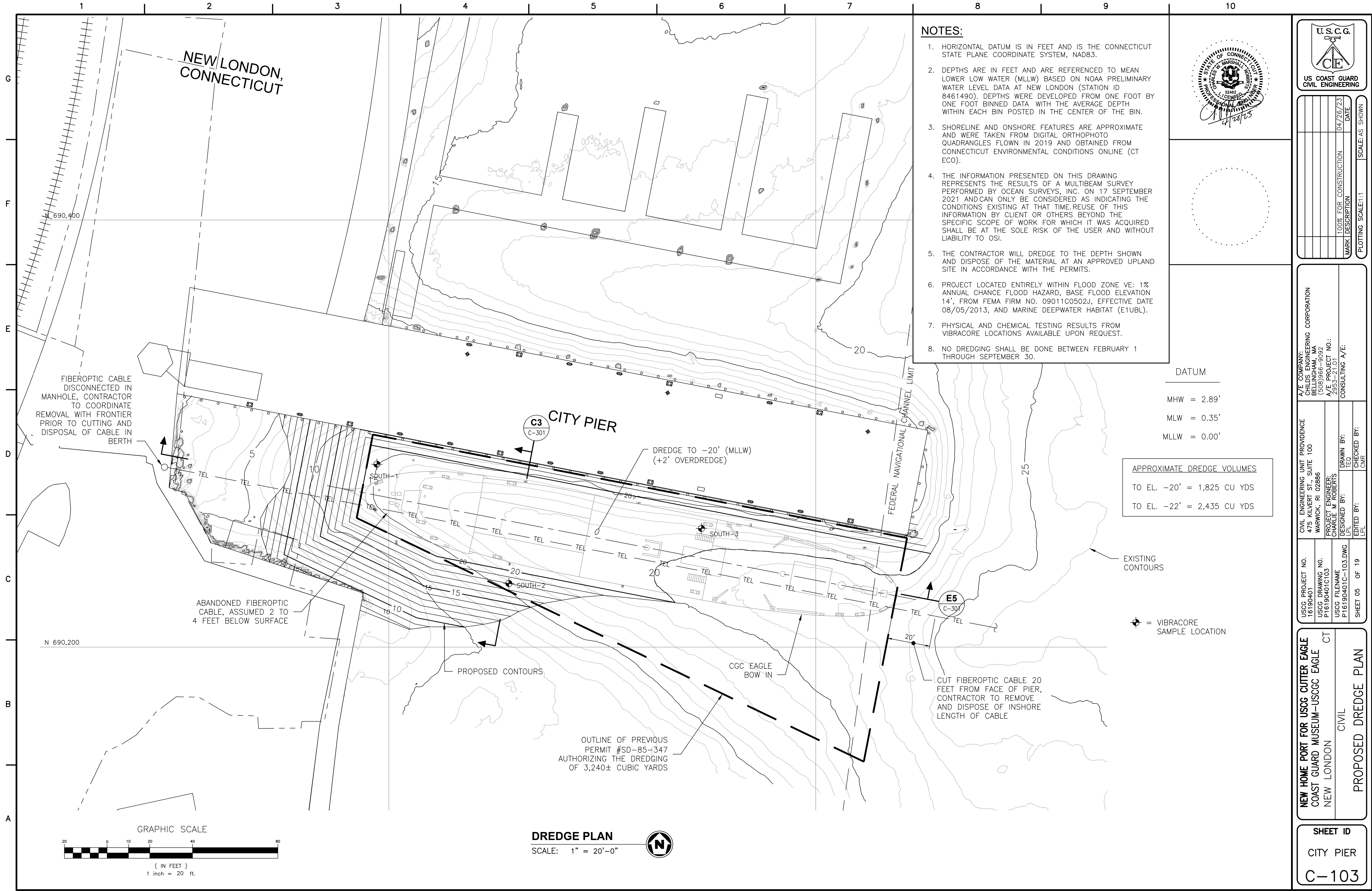
A/E COMPANY:
HILDS ENGINEERING CORPORATION
600 WILSON AVENUE
WARWICK, RI 02886
(508) 966-9092
A/E PROJECT NO.:
2953-21.01
CONSULTING A/E:

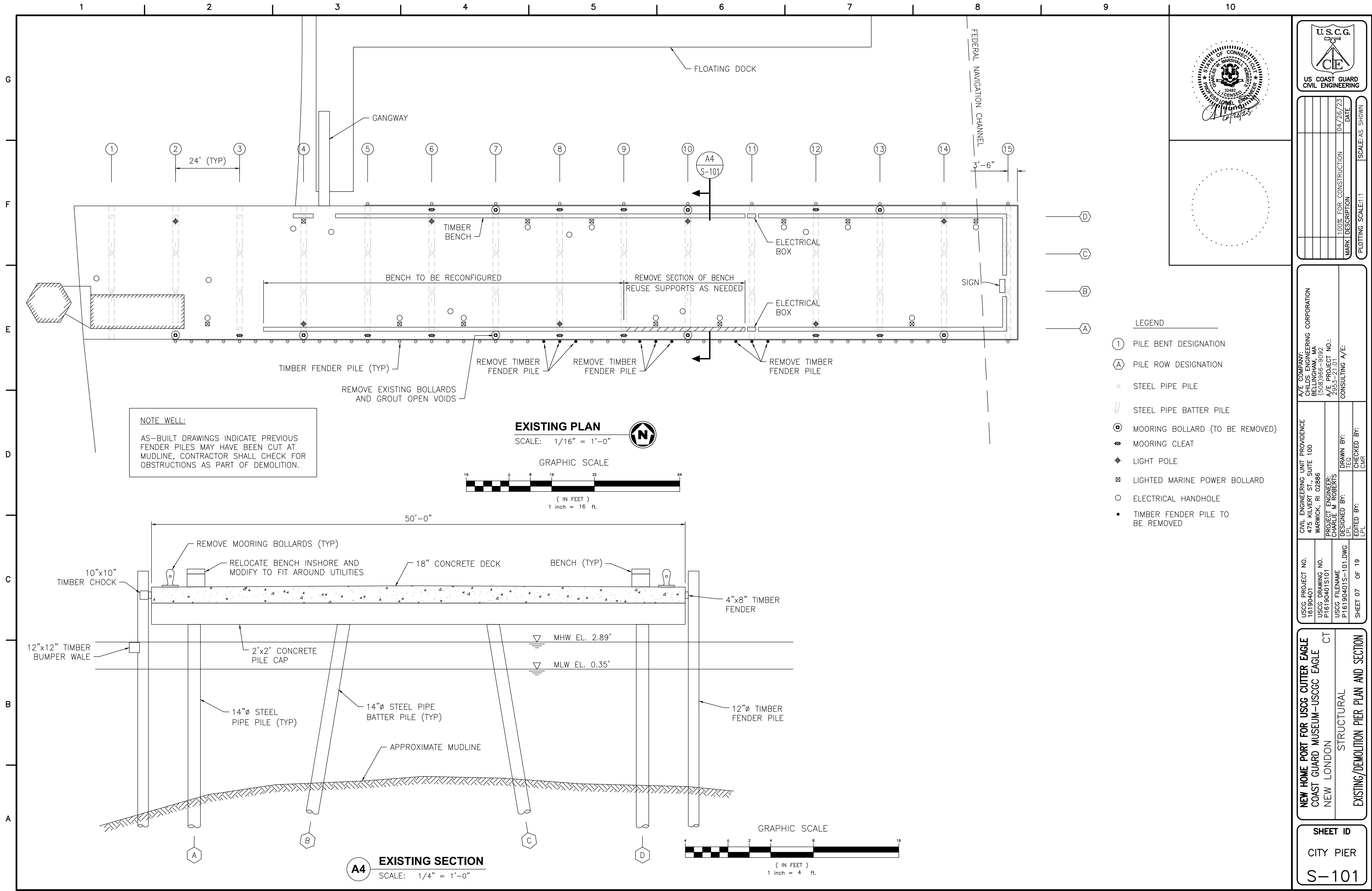
CIVIL ENGINEERING UNIT PROVIDENCE
475 KILVERT ST., SUITE 100
WARWICK, RI 02886
PROJECT ENGINEER:
CHARLIE M. ROBERTS
DESIGNED BY:
LPL
DRAWN BY:
TEO
CHECKED BY:
CMR

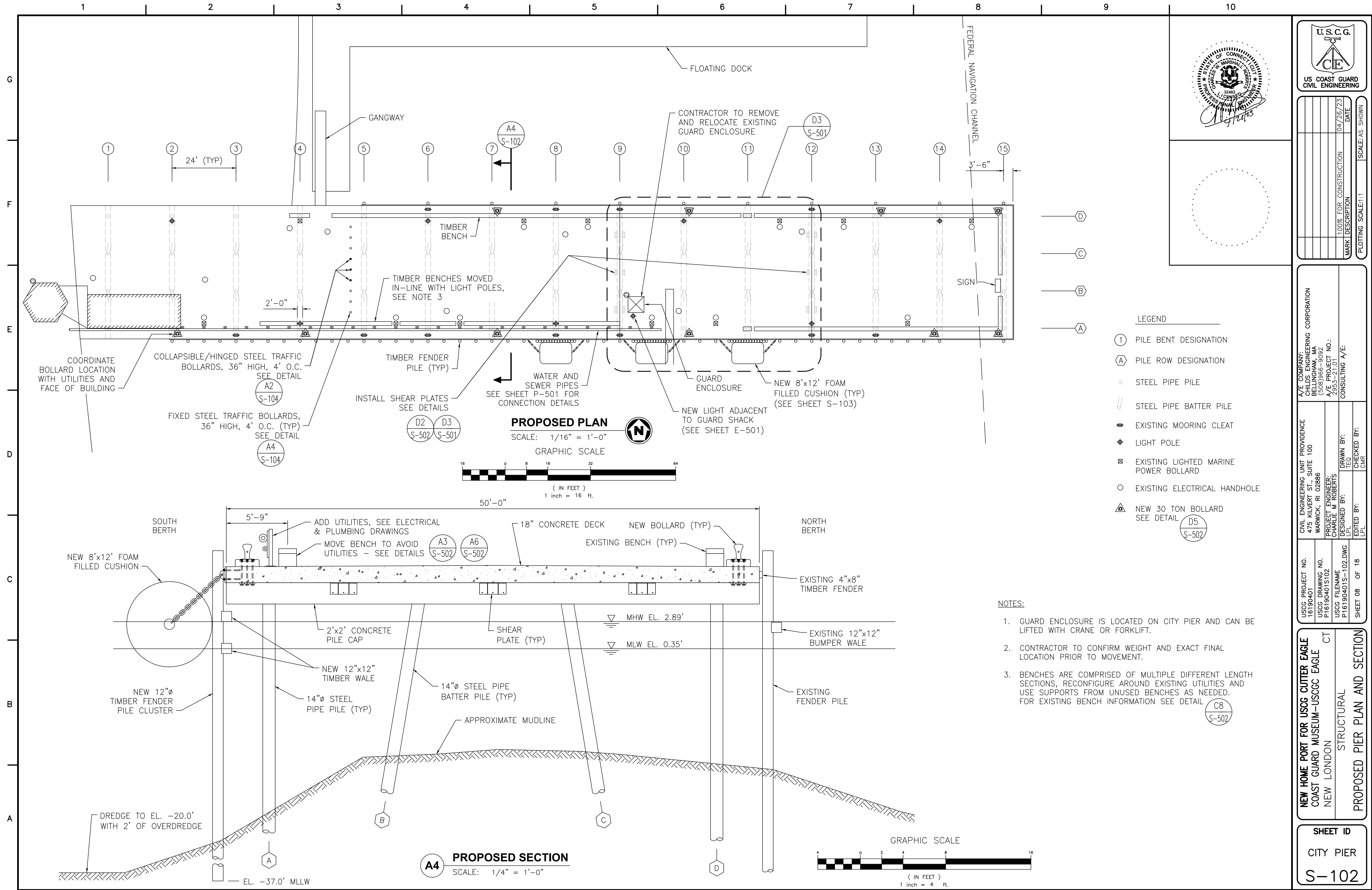
USCG PROJECT NO.
16190401
USCG DRAWING NO.
P16190401C102
USCG FILENAME
P16190401C-102.DWG
SHEET 04 OF 19

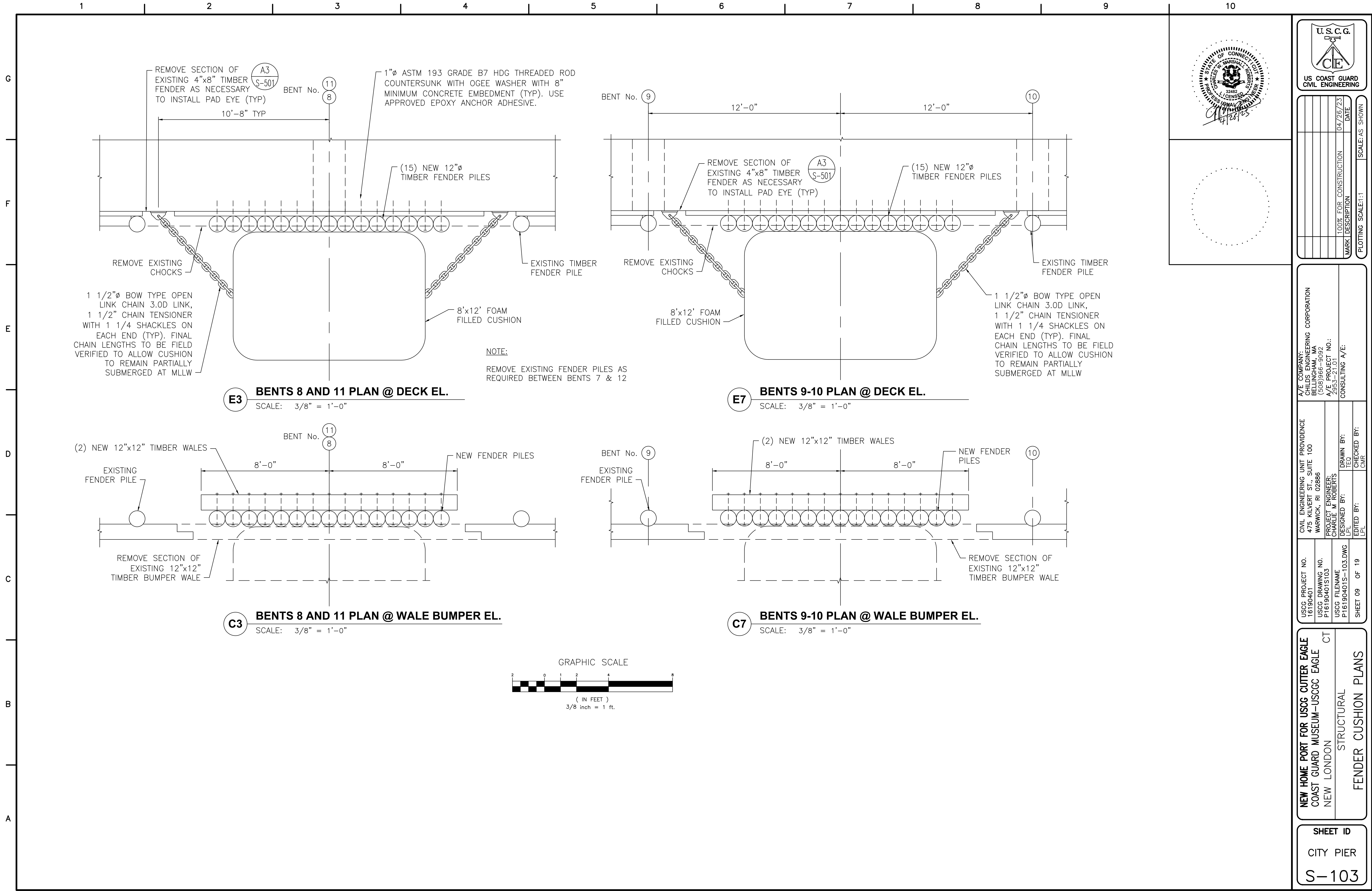
NEW HOME PORT FOR USCG CUTTER EAGLE
COAST GUARD MUSEUM-USCGC EAGLE
NEW LONDON
CIVIL
CIVIL PLAN

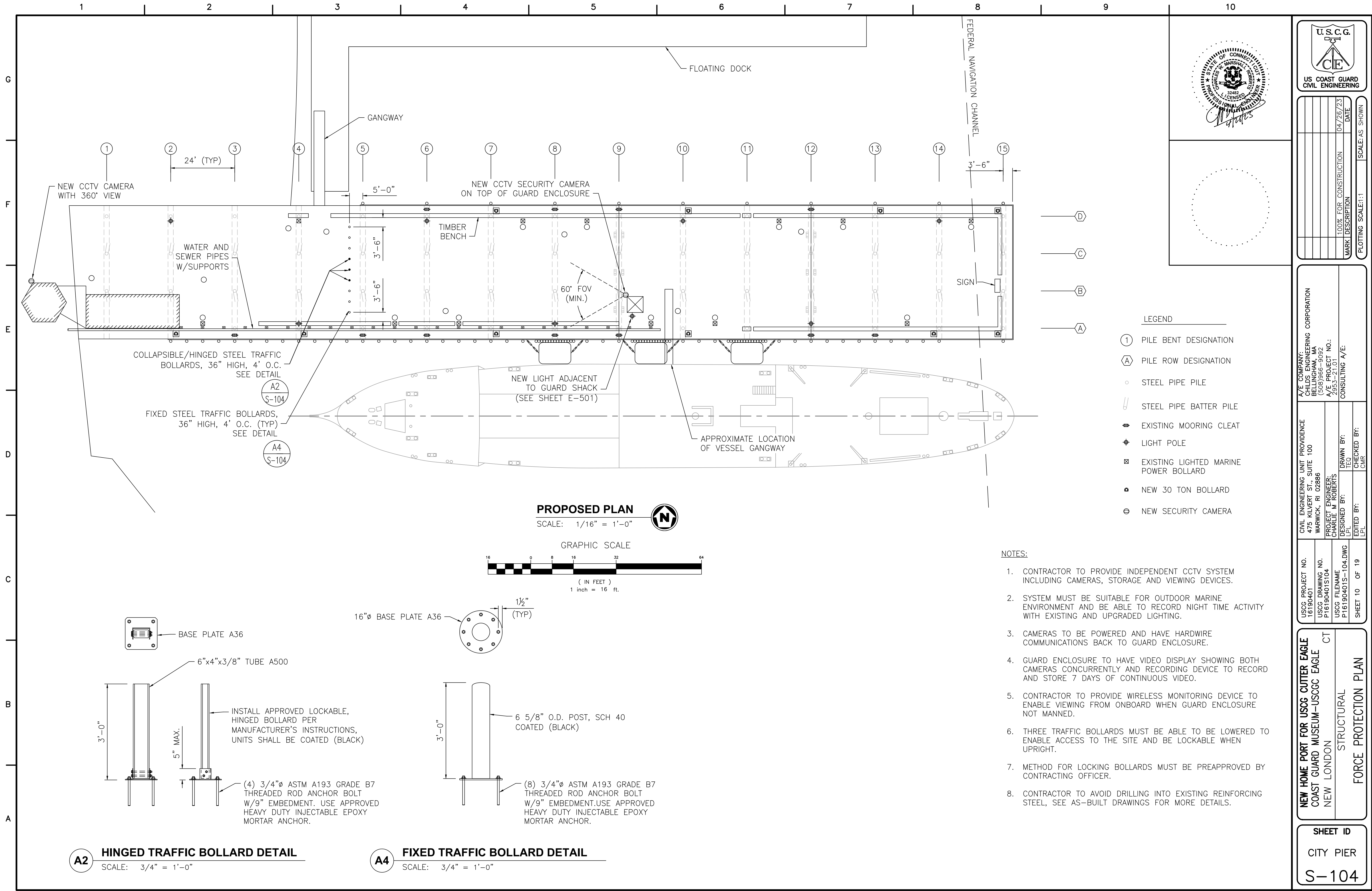
SHEET ID
CITY PIER
C-102

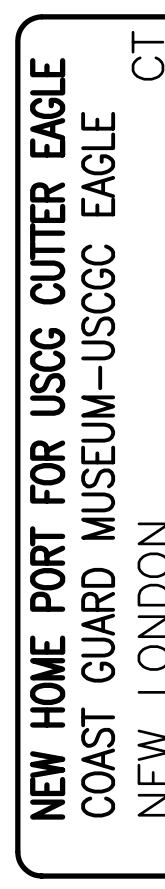
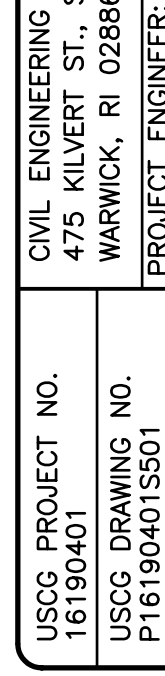
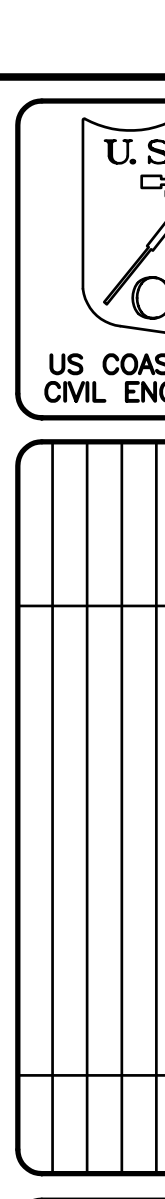
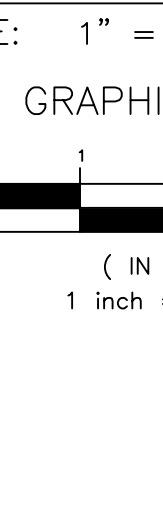
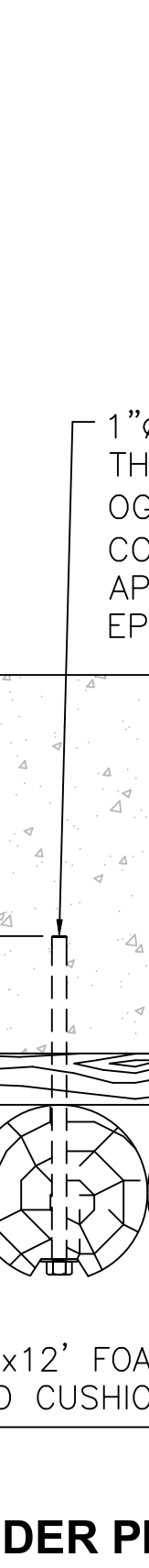
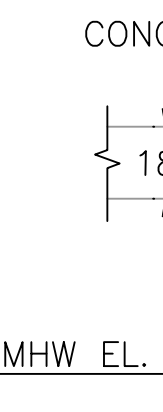
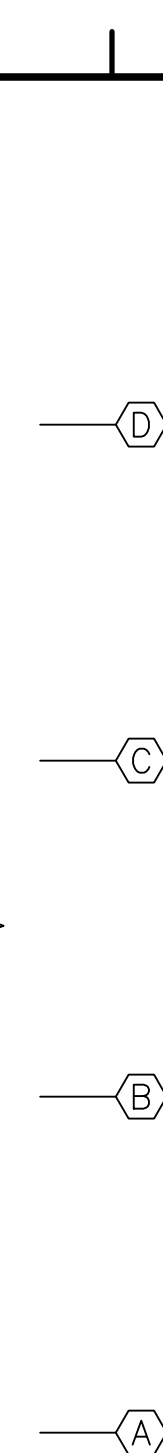


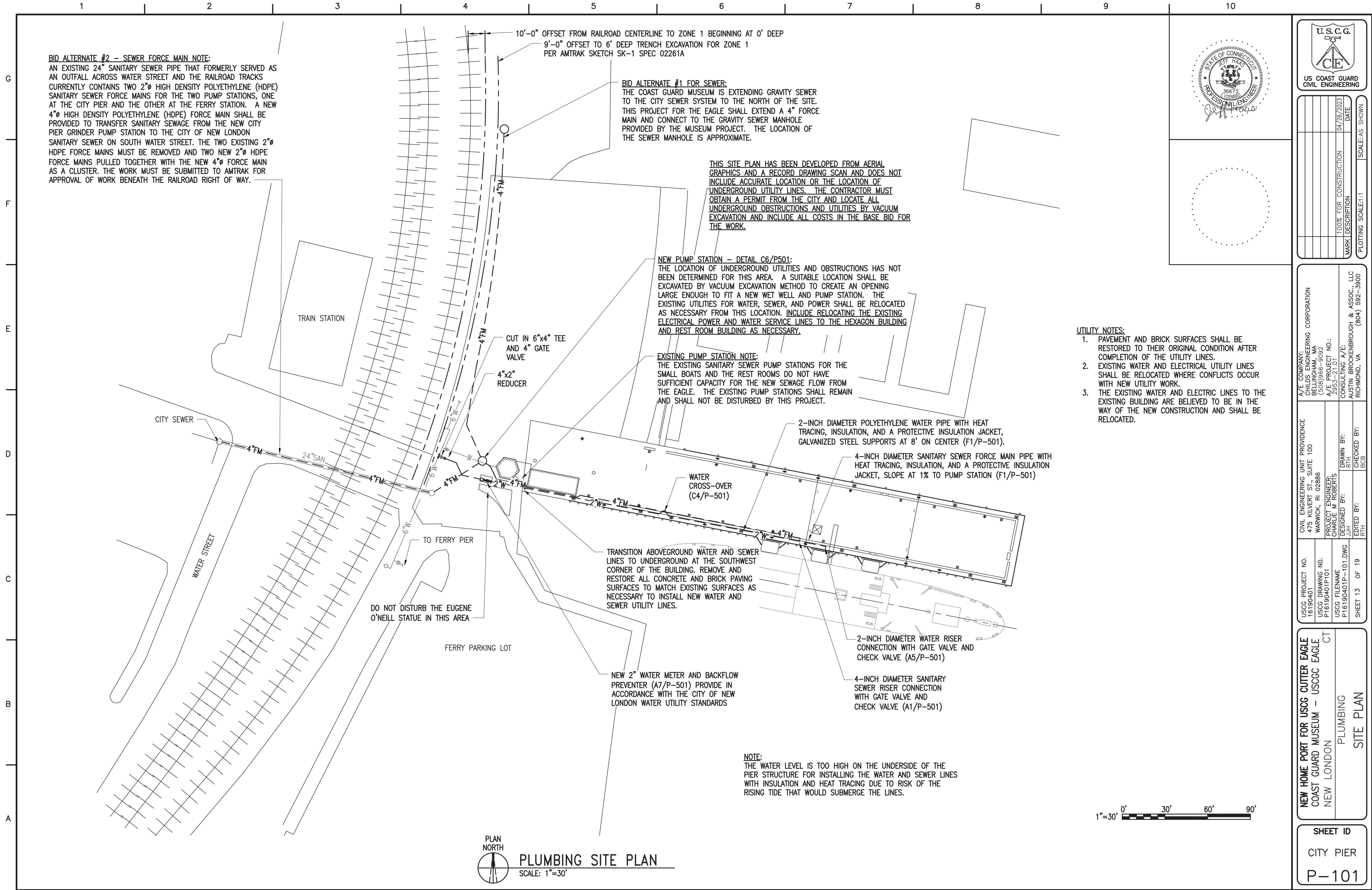


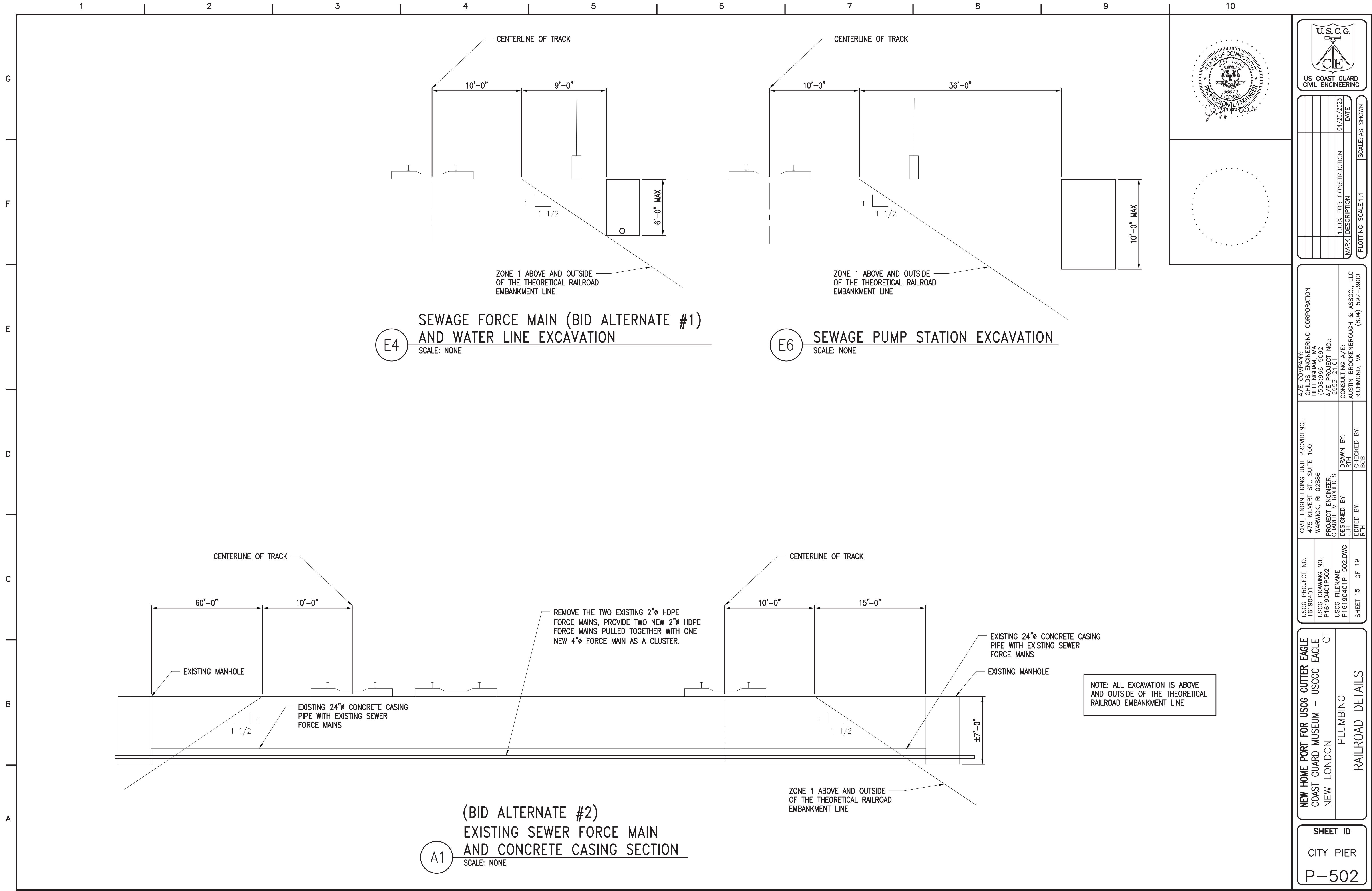


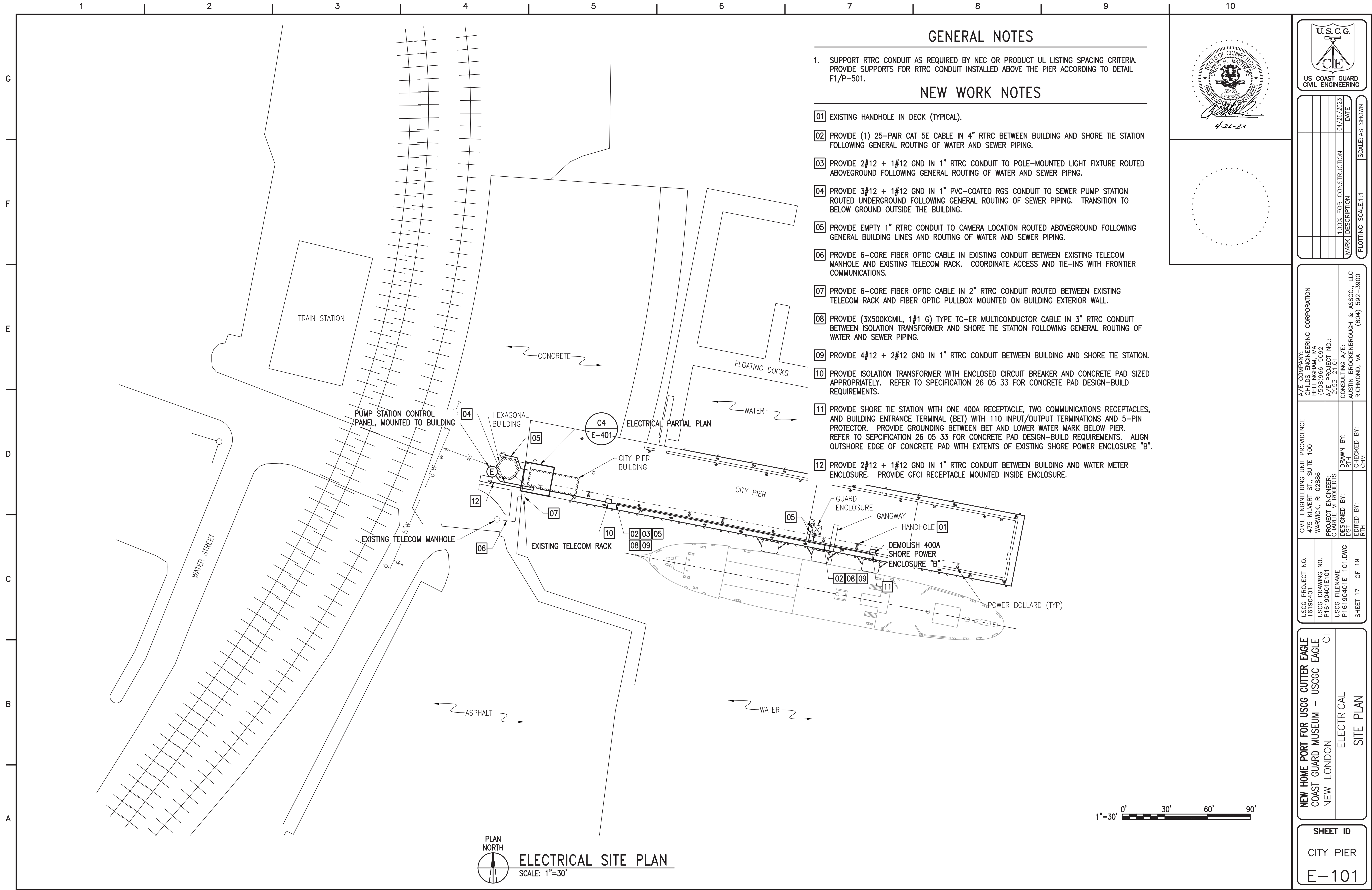














SCALE: $3/4"=1'-0"$

1. PROVIDE WEATHERPROOF SEAL AT ALL BUILDING PENETRATIONS.

[illegible]

A/E COMPANY: CHILDS ENGINEERING CORPORATION BELLINGHAM, MA (508)966-9092 A/E PROJECT NO.: 2953-21.01	CONSULTING A/E: AUSTIN BROCKENBROUGH & ASSOC., LLC RICHMOND, VA (804) 592-3900
---	---

CIVIL ENGINEERING UNIT PROVIDENCE	
475 KILVERT ST., SUITE 100	
WARWICK, RI 02886	
PROJECT ENGINEER:	
CHARLIE M ROBERTS	
DESIGNED BY:	DRAWN BY:
POST	RTH
EDITED BY:	CHECKED BY:

USCG PROJECT NO. 16190401	USCG DRAWING NO. P16190401E401	USCG FILENAME P16190401E-401.DWG	SHEET 18 OF 19
------------------------------	-----------------------------------	-------------------------------------	----------------

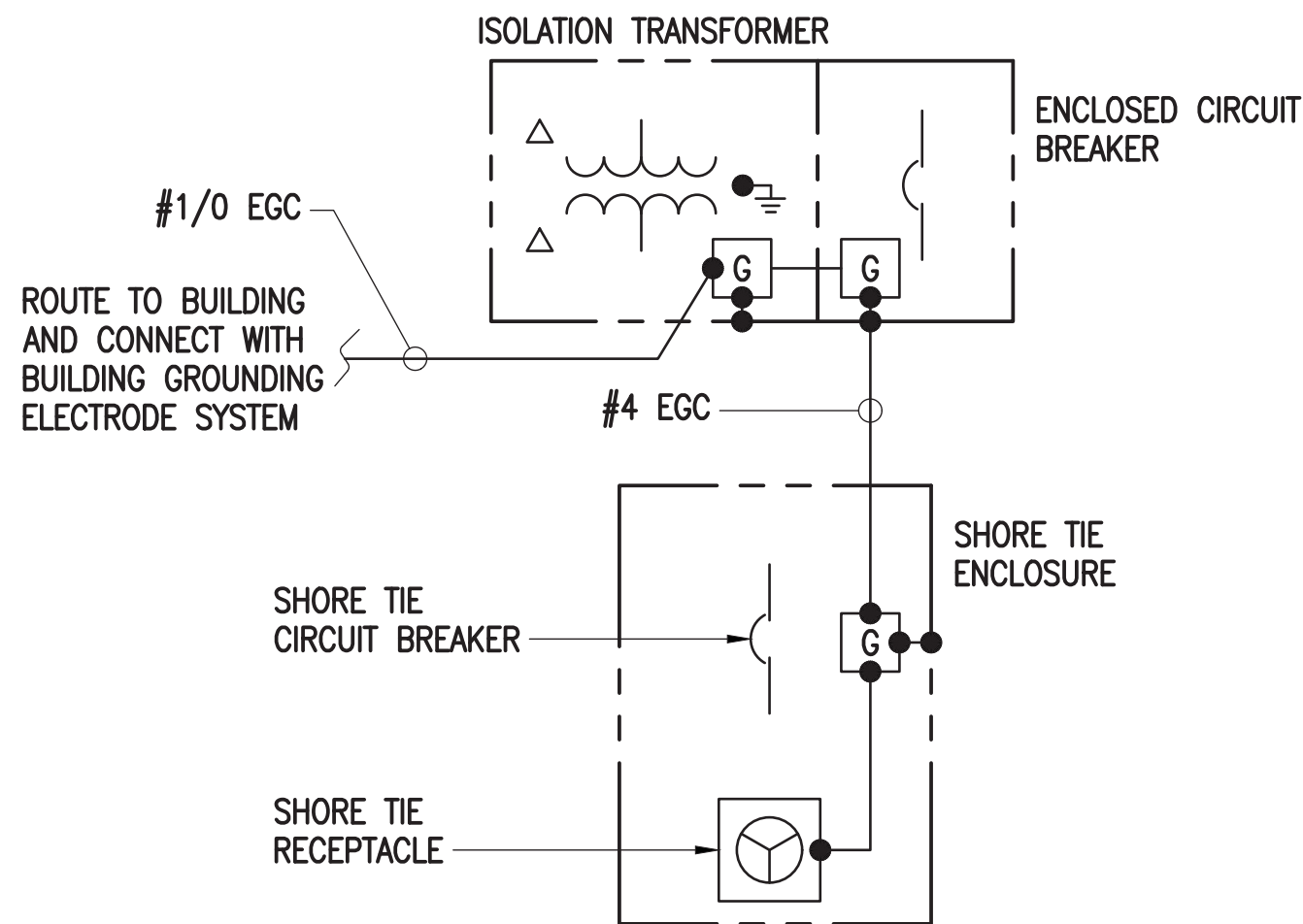
NEW HOME PORT FOR USCG CUTTER EAGLE
COAST GUARD MUSEUM – USCGC EAGLE
NEW LONDON CT
ELECTRICAL
PARTIAL PLAN

SHEET ID

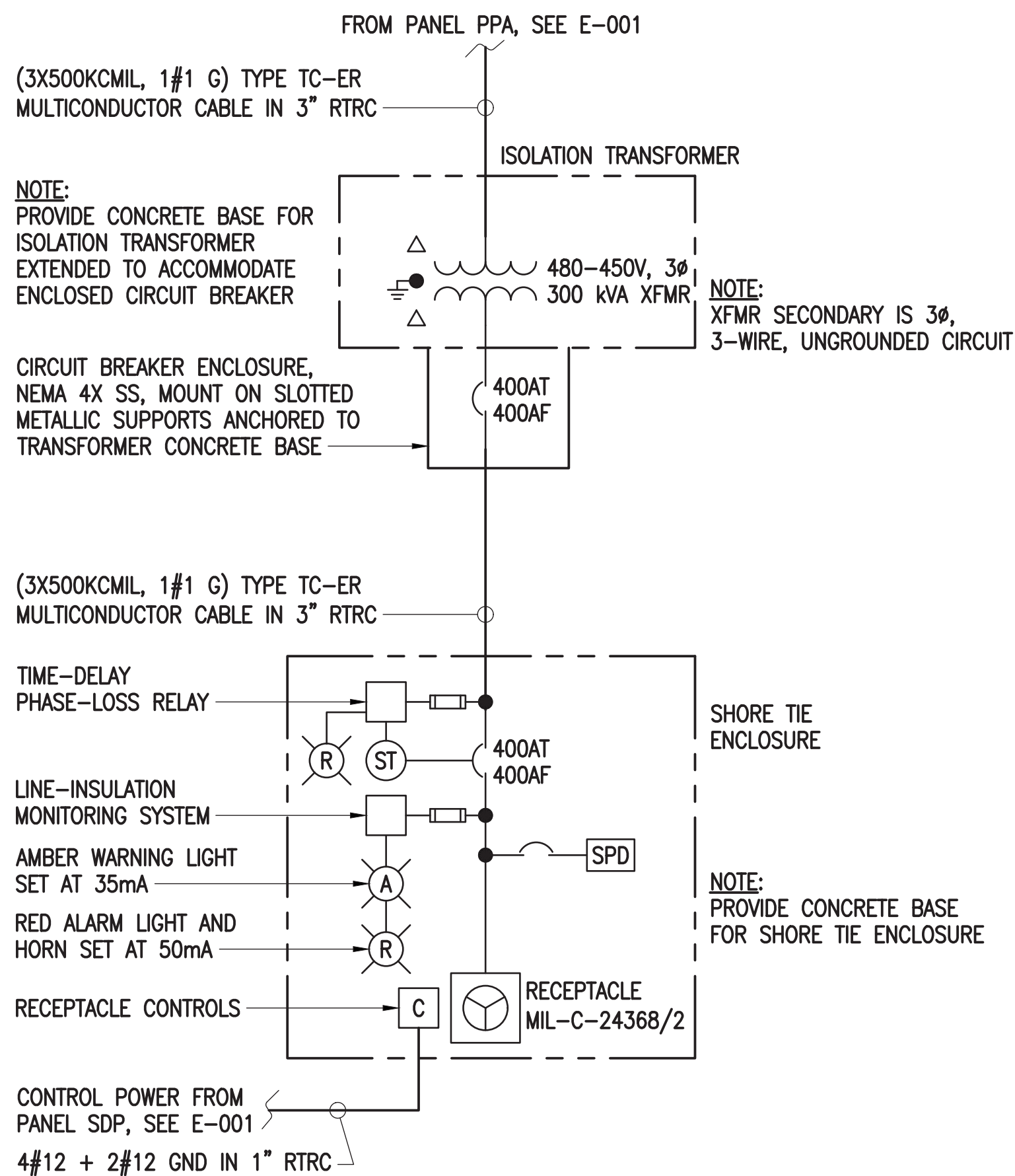
CITY PIER

E-401





E2 SHORE POWER GROUNDING DIAGRAM
SCALE: NONE

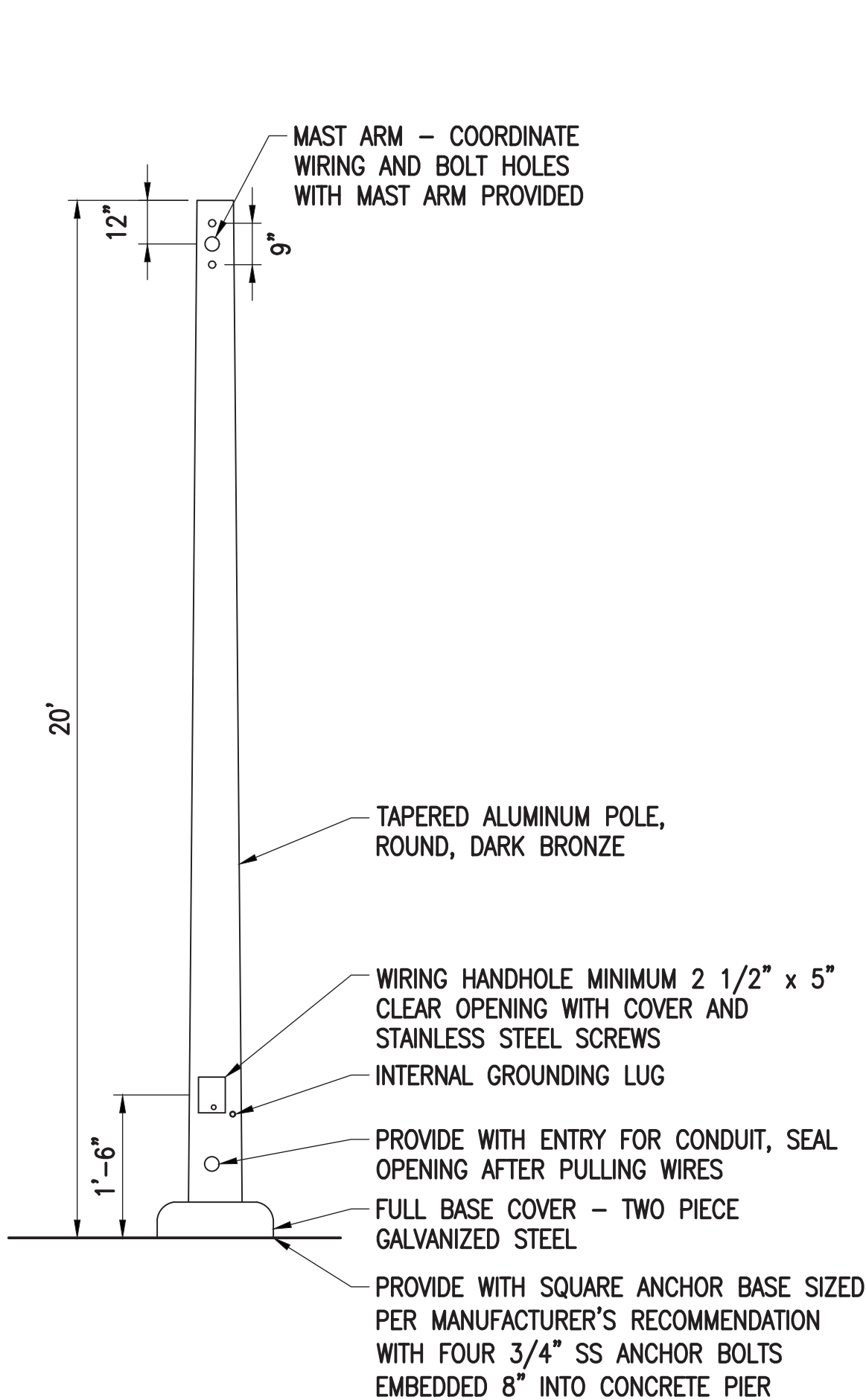


A2 SHORE POWER ONE-LINE DIAGRAM
SCALE: NONE

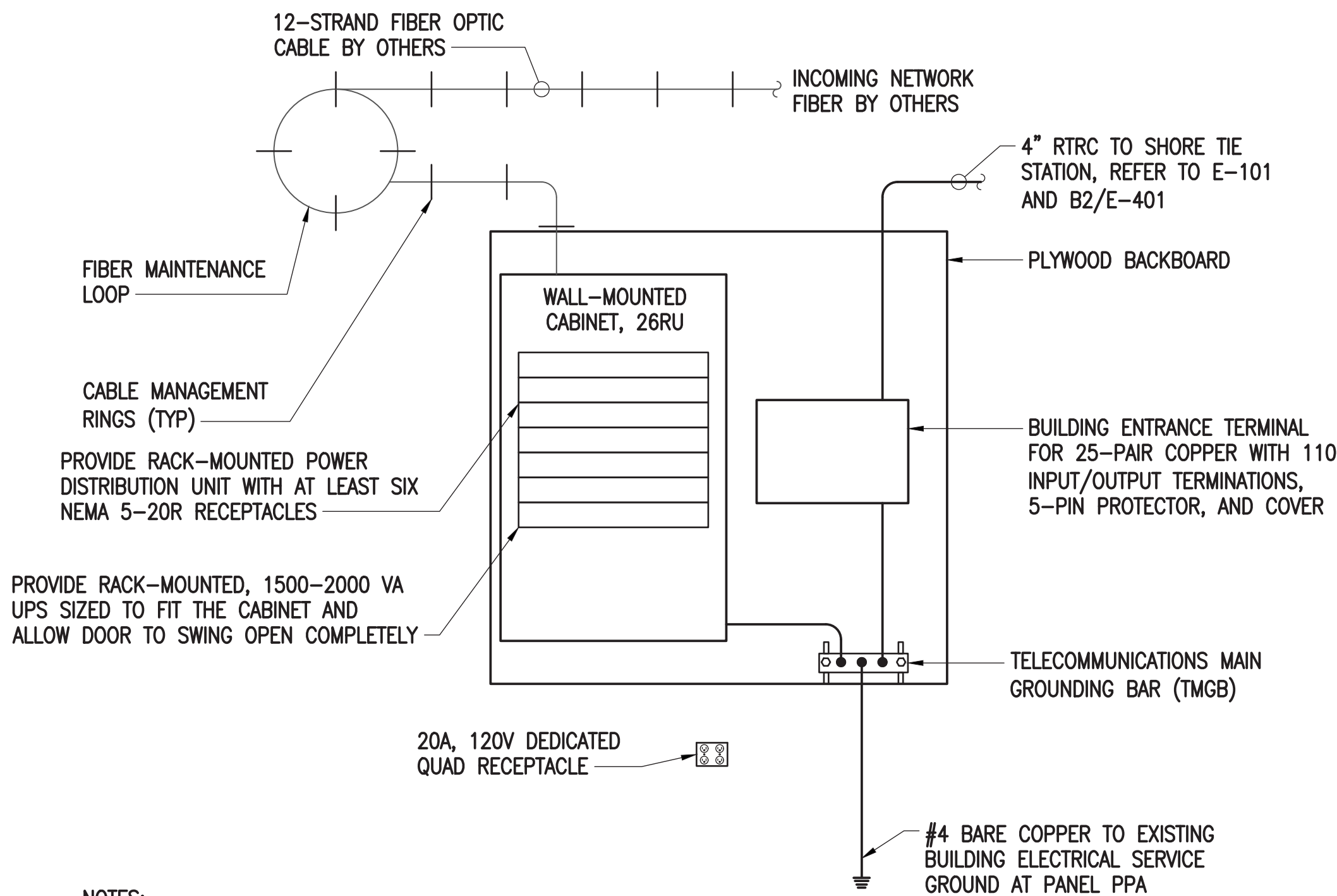
LUMINAIRE REQUIREMENTS:

1. HOUSING – DIE-CAST ALUMINUM OR DIE-CAST AND EXTRUDED ALUMINUM WITH INTEGRAL, SELF-CLEANING HEAT SINK FINS, RIBS, OR EQUIVALENT PASSIVE COOLING MECHANISM. HEAT SINK SHALL BE INCORPORATED DIRECTLY INTO HOUSING TO ENSURE MAXIMUM HEAT TRANSFER AND DISSIPATION.
2. FINISH – MULTI-STAGE PRE-TREATMENT, FINISHED WITH BAKED-ON POLYESTER POWDER COAT. FINISH SHALL PASS 2500 HOUR SALT SPRAY TEST PER ASTM B117. FINISH COLORS INCLUDE DARK BRONZE, SILVER, OR BLACK WITH CUSTOM COLORS AVAILABLE.
3. POWER SUPPLY/LED DRIVER – PROVIDE IN SEPARATE COMPARTMENT ACCESSIBLE WITHOUT THE USE OF HAND TOOLS. CLASS 1 DRIVER SHALL OPERATE AT 120-480V, 60 HZ. POWER FACTOR GREATER THAN 0.9 AND THD LESS THAN 20% AT FULL LOAD. MINIMUM EFFICACY SHALL BE 60 LM/W AT MAXIMUM 600 mA OPERATING CURRENT.
4. LIGHT OUTPUT – NOMINAL 12,000 LUMENS AT 90 WATTS.
5. LED OPTICAL ASSEMBLY – NUMBER OF LED ARRAYS SHALL VARY TO ACCOMMODATE DESIRED LUMINAIRE OUTPUT. PROVIDE WITH NEMA TYPE V DISTRIBUTION. BUG UPLIGHT RATING OF U0, WITH BACKLIGHT AND GLARE RATINGS AS DETERMINED BY LIGHTING ZONE INSTALLED. MINIMUM COLOR RENDERING INDEX (CRI) SHALL BE 70 FOR CORRELATED COLOR TEMPERATURE (CCT) OF 4000 K TO 4500 DEGREES K.
6. SURGE PROTECTION – 6 kV MINIMUM, COMPLIANT WITH ANSI C62.41.2.
7. CERTIFICATION – UL AND/OR ETL LISTED, MINIMUM IP65 RATED PER ANSI/IEC 60529, AND RoHS COMPLIANT.
8. PROVIDE WITH PHOTOCELL AND BIRD SPIKES.
9. OTHER – THE ABOVE SKETCH IS A NON-PROPRIETARY GRAPHIC REPRESENTATION OF A LUMINAIRE THAT MAY MEET THE SPECIFICATION REQUIREMENTS AND IS NOT INTENDED TO INDICATE A CERTAIN MANUFACTURER'S PREFERENCE. DIMENSIONS ARE NOMINAL AND VARY PER MANUFACTURER.

E5 LED AREA LUMINAIRE
SCALE: NONE



A5 ANCHOR BASE ALUMINUM POLE
SCALE: NONE



NOTES:

1. PROVIDE 25-PAIR, PE89/CAT 5e, 24 AWG MINIMUM COPPER CABLE IN 4" RTRC FROM COPPER PATCH PANEL TO SHORE-TIE STATION LOCATION.
2. PROVIDE WALL-MOUNTED ENCLOSED CABINET WITH 26RU SPACE. MOUNT THE FOLLOWING IN THE RACK: FIBER OPTIC PATCH PANEL WITH SINGLEMODE FIBER OPTIC DUPLEX LC CONNECTORS, COPPER PATCH PANEL WITH FIBER OPTIC MEDIA CONVERTER, POWER DISTRIBUTION UNIT, AND UPS.
3. PROVIDE CABINET WITH A COPPER GROUND BUS FOR ATTACHMENT OF GROUND CONDUCTORS.
4. TERMINATE THE OSP 12-STRAND SINGLE MODE FIBER OPTIC CABLE AT THE FIBER PATCH PANEL.

A7 COMMUNICATIONS CABINET (INTERIOR)
SCALE: NONE



DATE	SCALE	DESCRIPTION
04/26/2023	AS SHOWN	100% FOR CONSTRUCTION

A/E COMPANY:
HILDS ENGINEERING CORPORATION
1000 W. MAIN ST., SUITE 100
WARWICK, RI 02886
A/E PROJECT NO.:
2953-211.01
CONSULTING A/E:
AUSTIN BROCKENBROUGH & ASSOC., LLC
RICHMOND, VA (804) 592-3900

CIVIL ENGINEERING UNIT PROVIDENCE
475 KILVERT ST., SUITE 100
WARWICK, RI 02886
PROJECT ENGINEER:
CHARLIE M. ROBERTS
DESIGNED BY:
DST
DRAWN BY:
RTH
CHECKED BY:
CHM

USCG PROJECT NO.
16190401
USCG DRAWING NO.
P16190401E501
USCG FILENAME
P16190401E-501.DWG
SHEET 19 OF 19

NEW HOME PORT FOR USCG CUTTER EAGLE
COAST GUARD MUSEUM - USCGC EAGLE
NEW LONDON CT
ELECTRICAL
DETAILS

SHEET ID
CITY PIER
E-501