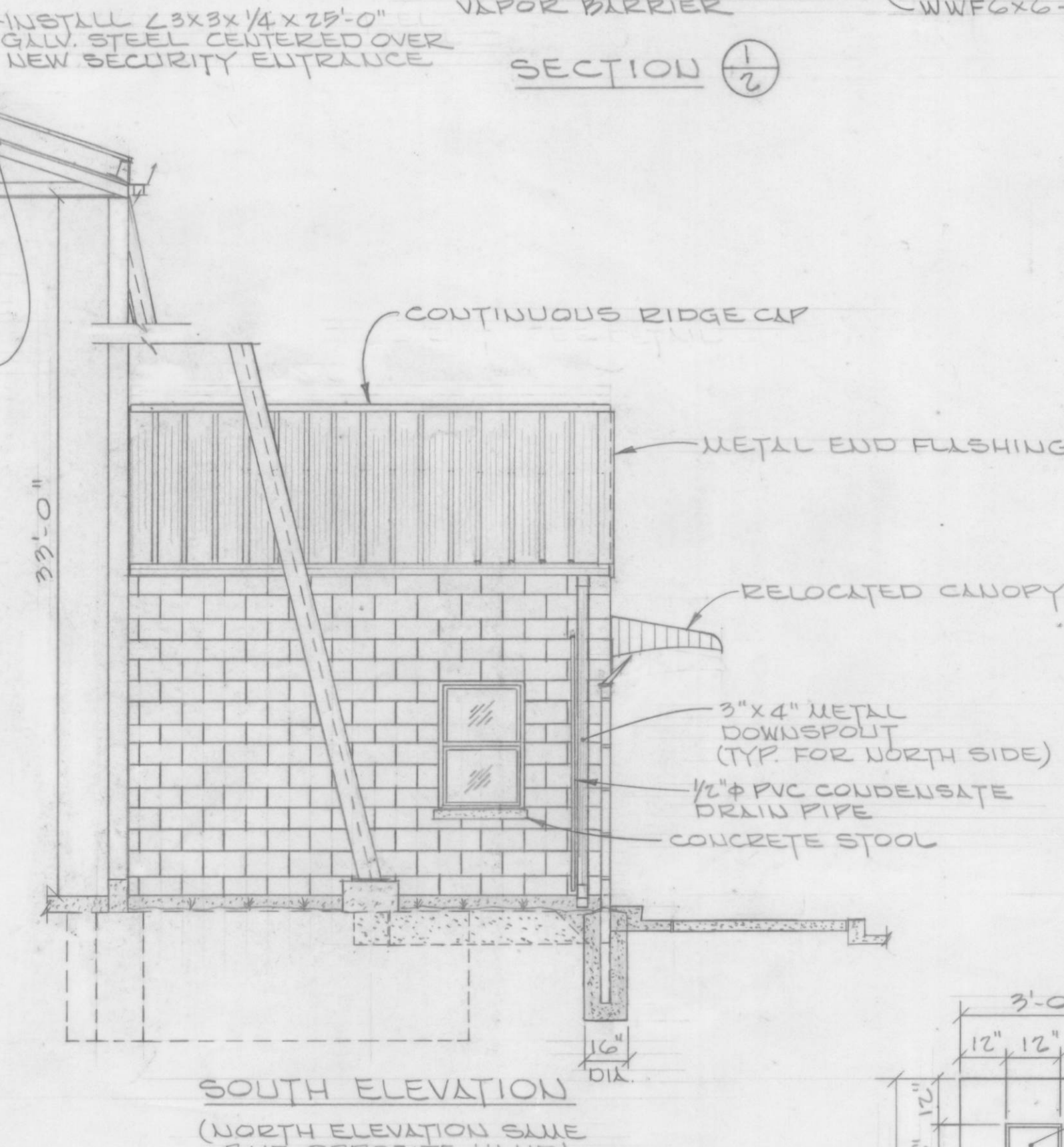
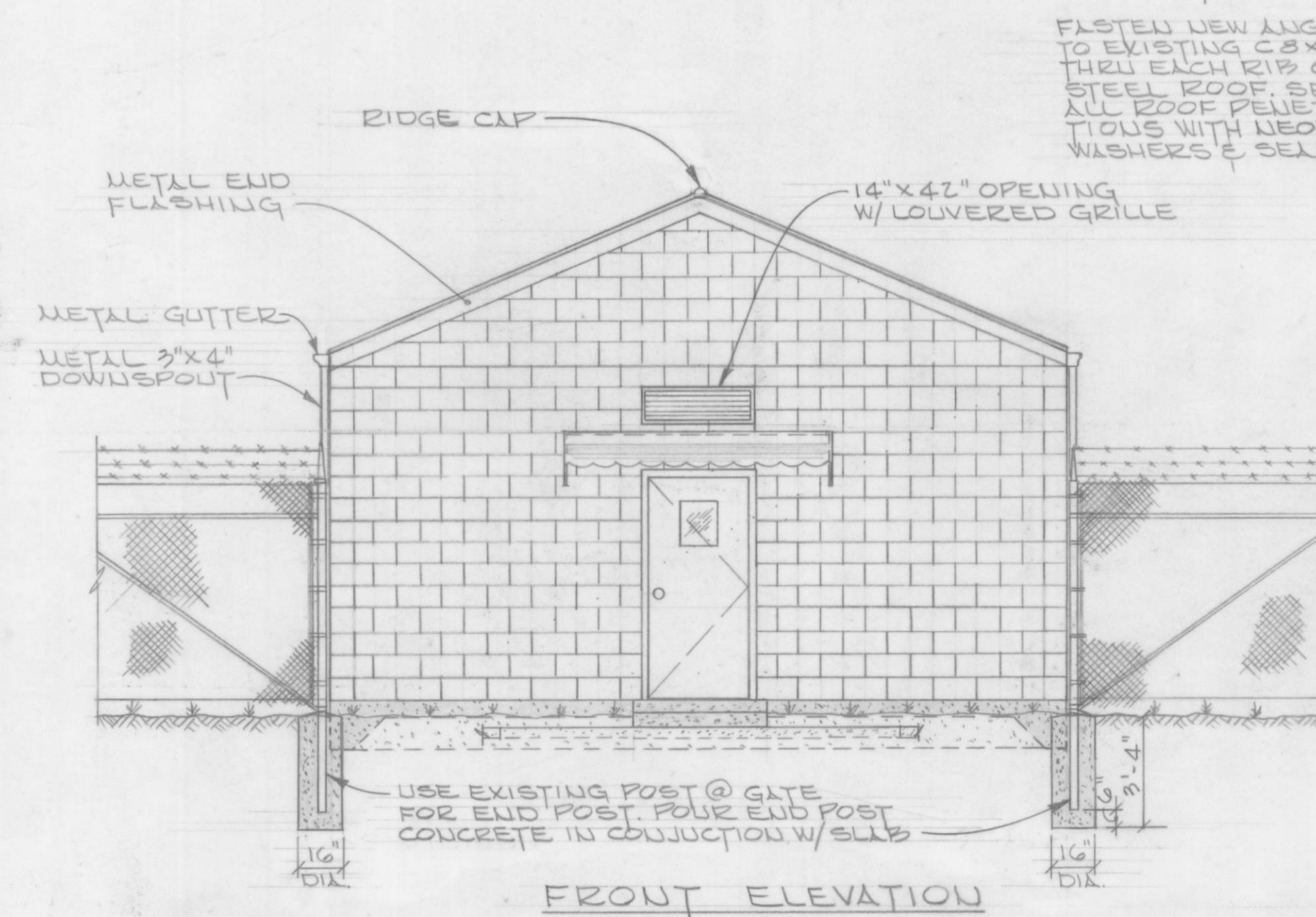


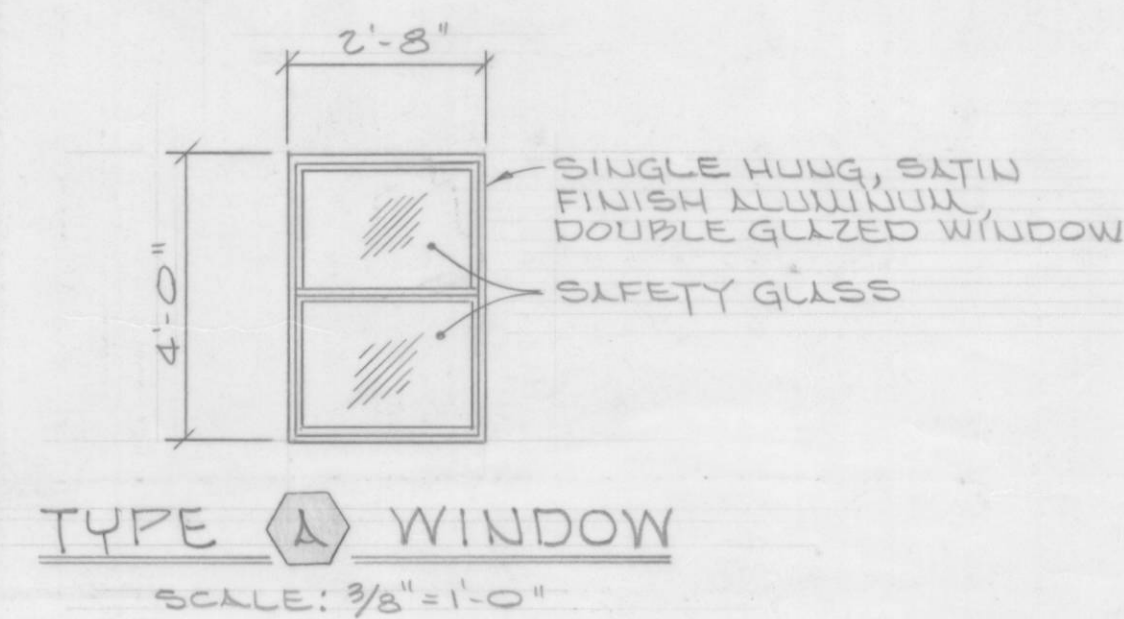
LEGEND		
EXISTING	PROPOSED	DESCRIPTION
		CONCRETE IN PLAN, SECTION OR ELEVATION.
		CONCRETE MASONRY UNIT WALL IN PLAN.
		CMU WALL WITH 1/2\"/>
		DOOR & TYPE NUMBER
		WINDOW & TYPE LETTER



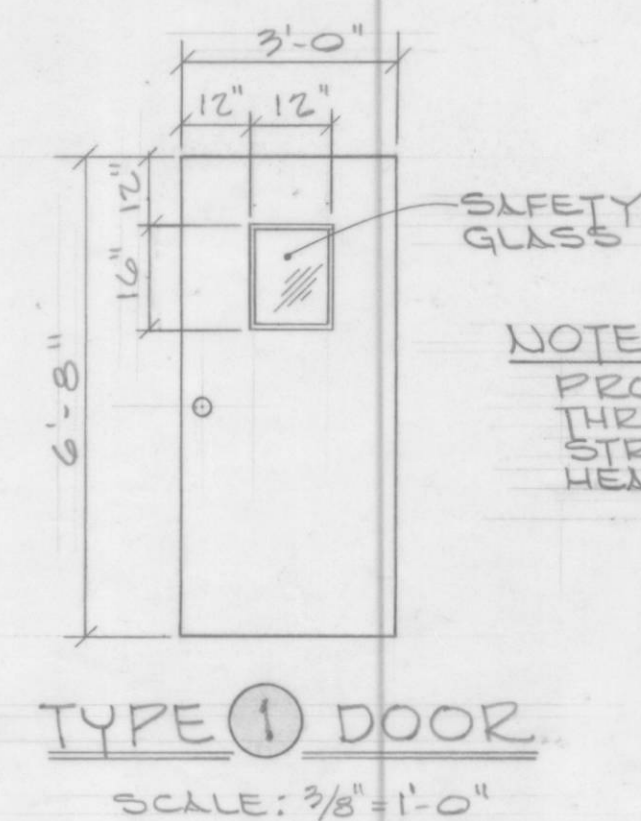
NOTES

1. CONTRACTOR SHALL CUT & FILL EXISTING GROUND UNDER NEW FLOOR SLAB AND COMPACT TO ELEVATION EQUAL TO TOP OF EXISTING STRUT AND PILE CAPS, EL. 184.5.
2. CONTRACTOR SHALL PROVIDE 3/8\"/>
3. COLOR OF PAINT SHALL MATCH EXISTING PAINT USED ON INTERIOR & EXTERIOR OF ADJOINING BUILDING.

RECOMMENDED
Brushmaster
 CHIEF, STRUCTURES LAB
 DATE 11/15/85



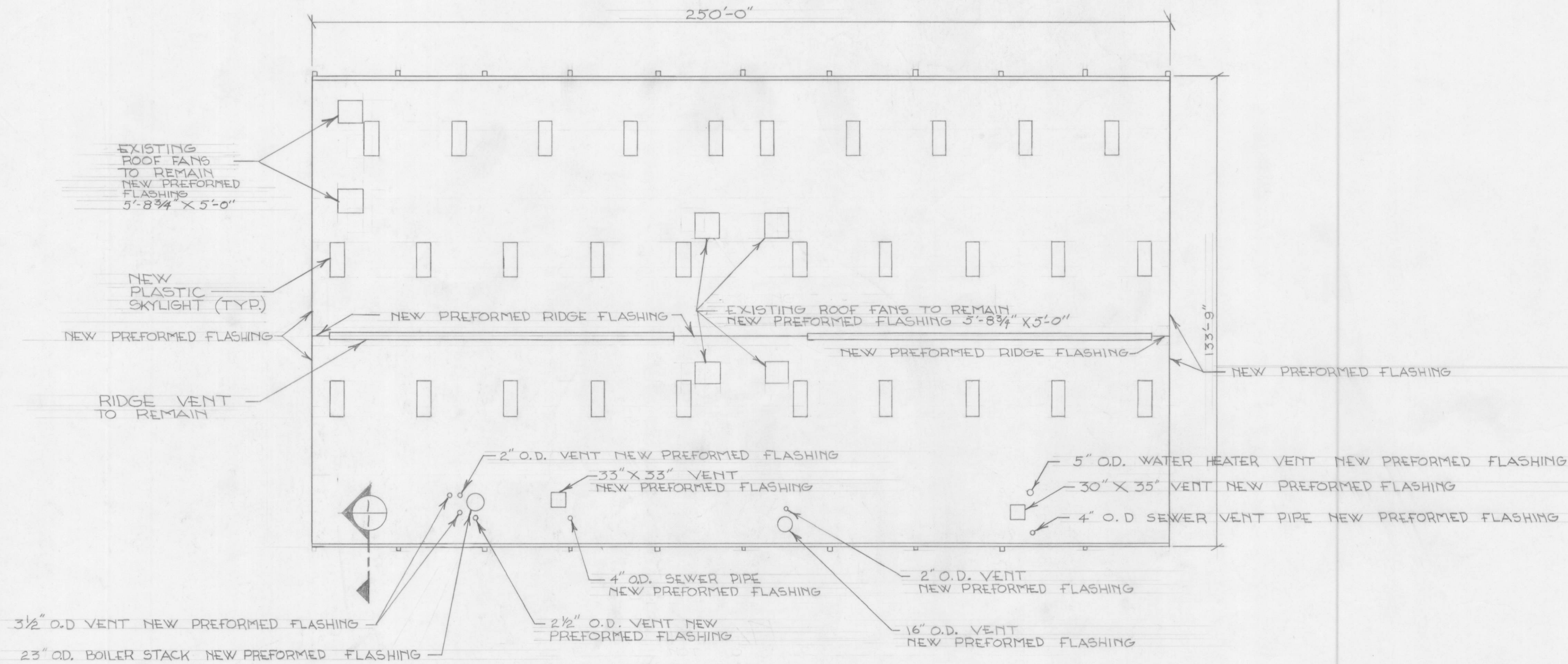
NEW SECURITY ENTRANCE
 SCALE: 1/4\"/>



NOTE:
 PROVIDE ALUMINUM THRESHOLD & WEATHER-STRIPPING ON DOOR JAMB, HEAD AND SILL.

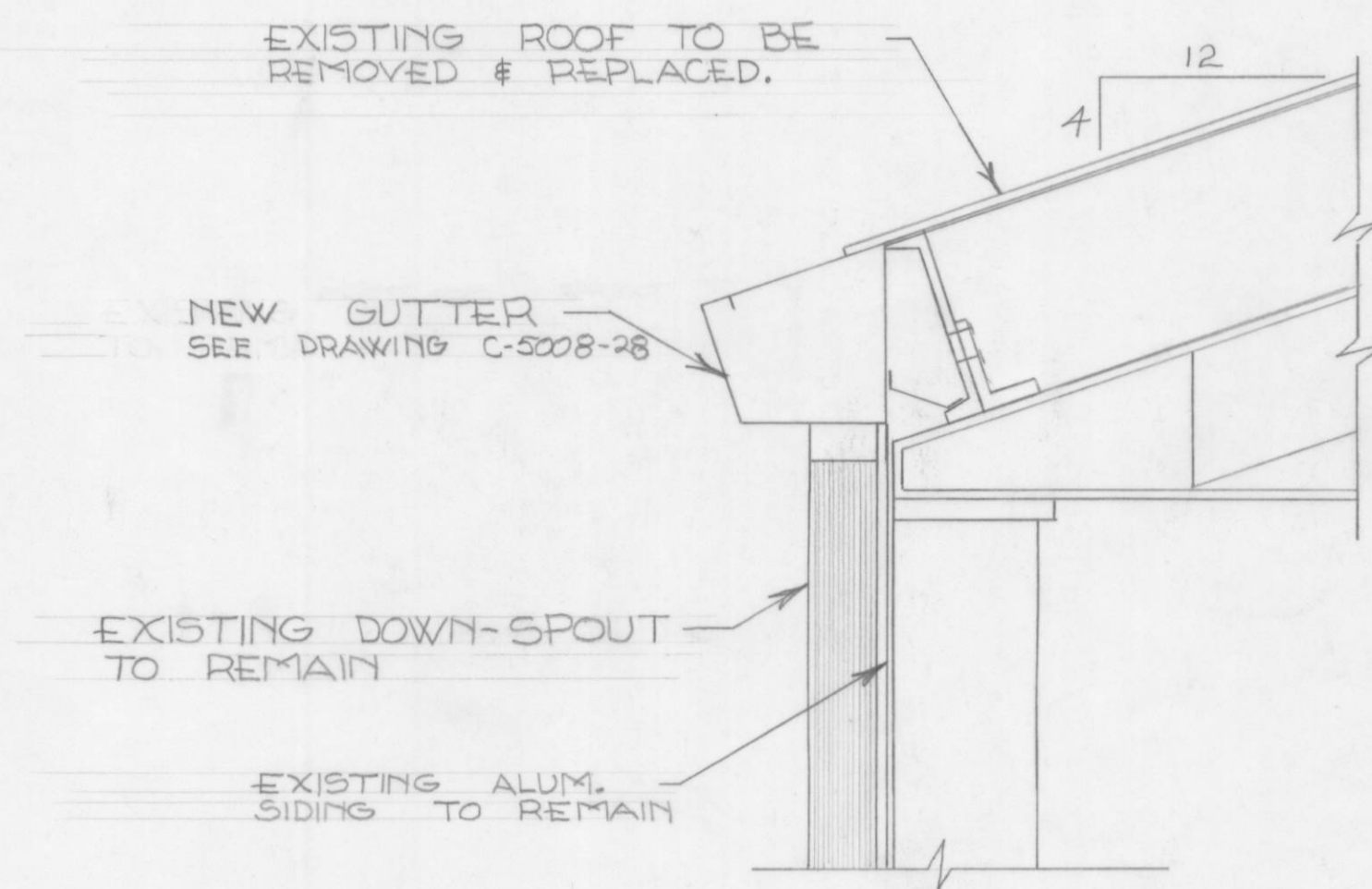
TYPE 1 DOOR
 SCALE: 3/8\"/>

SYM	DESCRIPTION	DATE	APPROVED
REVISIONS			
APPROVED	COMMANDER & DIRECTOR	NEW SECURITY ENTRANCE & RESTROOM RENOVATION BUILDING NO. 5008 ARCHITECTURAL PLAN, SECTION, ELEVATIONS & DETAILS SCALE: AS SHOWN	
RECOMMENDED	CHIEF, E&CS		
REVIEWED	CHIEF, ENO. BR.		
REVIEWED	CHIEF, DES. & SPECS. SECT.		
SUBMITTED	PROJECT ENG.		
DRAWN BY	DATE	U. S. ARMY ENGINEER WATERWAYS EXPERIMENT STATION CORPS OF ENGINEERS VICKSBURG, MISS. DRAWING NO. C-5008-40 SHEET 2 OF 3	

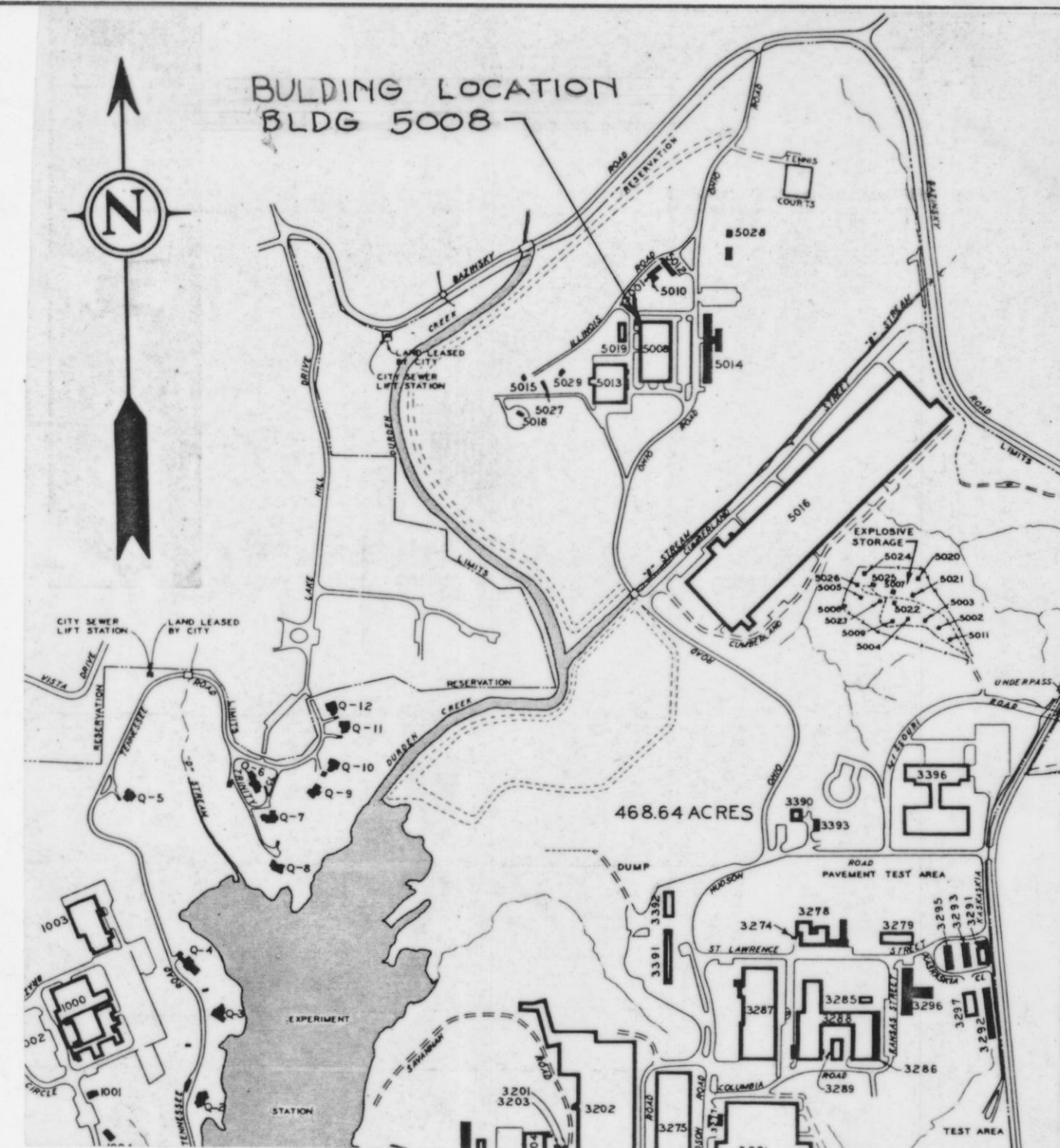


NOTES:

1. EXISTING ALUMINUM ROOFING PANELS, FLASHING AND FASTNERS SHALL BE REMOVED AND REPLACED WITH STEEL AS SPECIFIED.
2. EXISTING PLASTIC SKYLIGHTS PANELS SHALL BE REMOVED AND REPLACED WITH PANELS OF SAME DIMENSIONS AND MATERIALS AS SPECIFIED.
3. CONFIGURATION OF SKYLIGHTS SHALL MATCH ROOF PANELS.



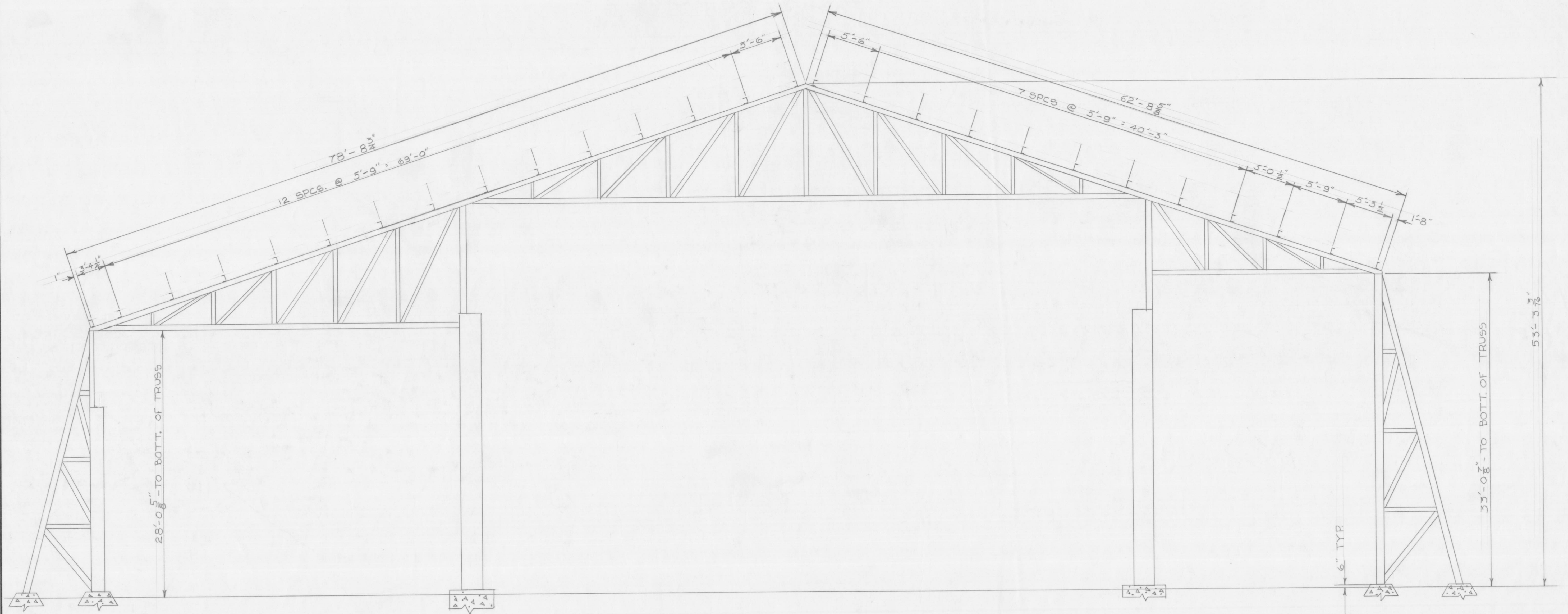
SECTION 1
NOT TO SCALE



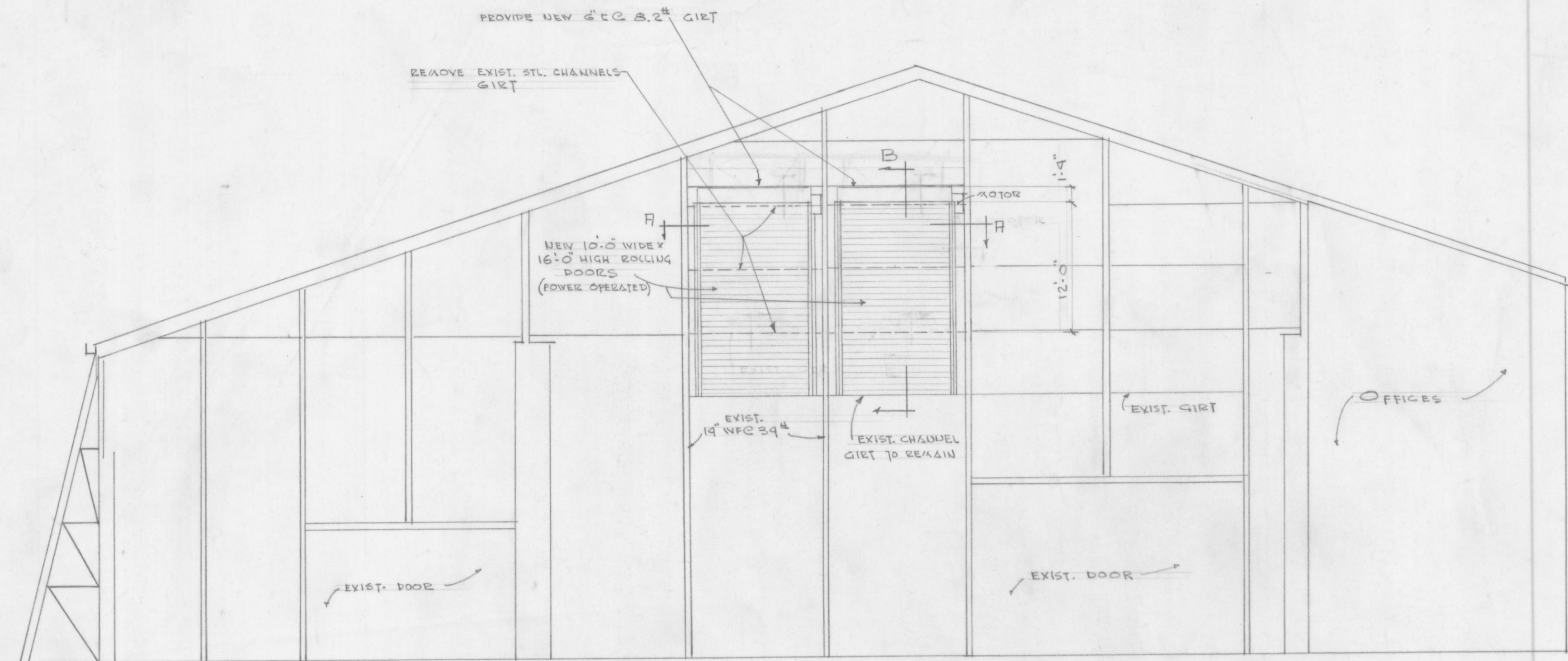
PARTIAL STATION MAP
NOT TO SCALE

SYM	ZONE	DESCRIPTION		DATE APPROVED
REVISIONS				
APPROVED		BUILDING 5008 REROOFING		U.S. ARMY ENGINEER WATERWAYS EXPERIMENT STATION CORPS OF ENGINEERS VICKSBURG, MISS. C-5008-30
COLONEL, CEN DIRECTOR				
RECOMMENDED DIV. CHIEF				
REVIEWED BRANCH CHIEF				
SUBMITTED PROJECT ENG.				
Warren V. Smith				
CHECKED FOR PRODUCTION				
19 Sept 80				
DRAWN	TRACED	CHECKED		
51	9-10-80		SCALE: NONE	SPEC. NO.
			SHEET 1 OF 2	

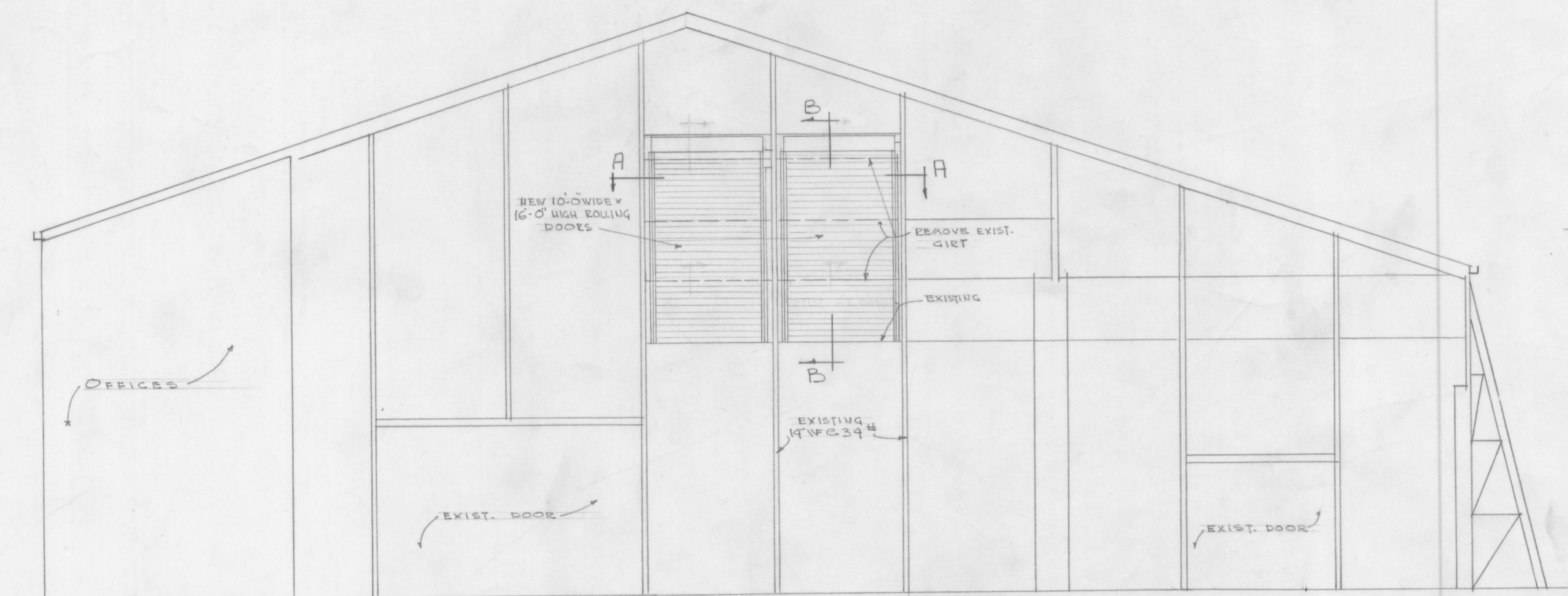
BUILDING 5008
REROOFING



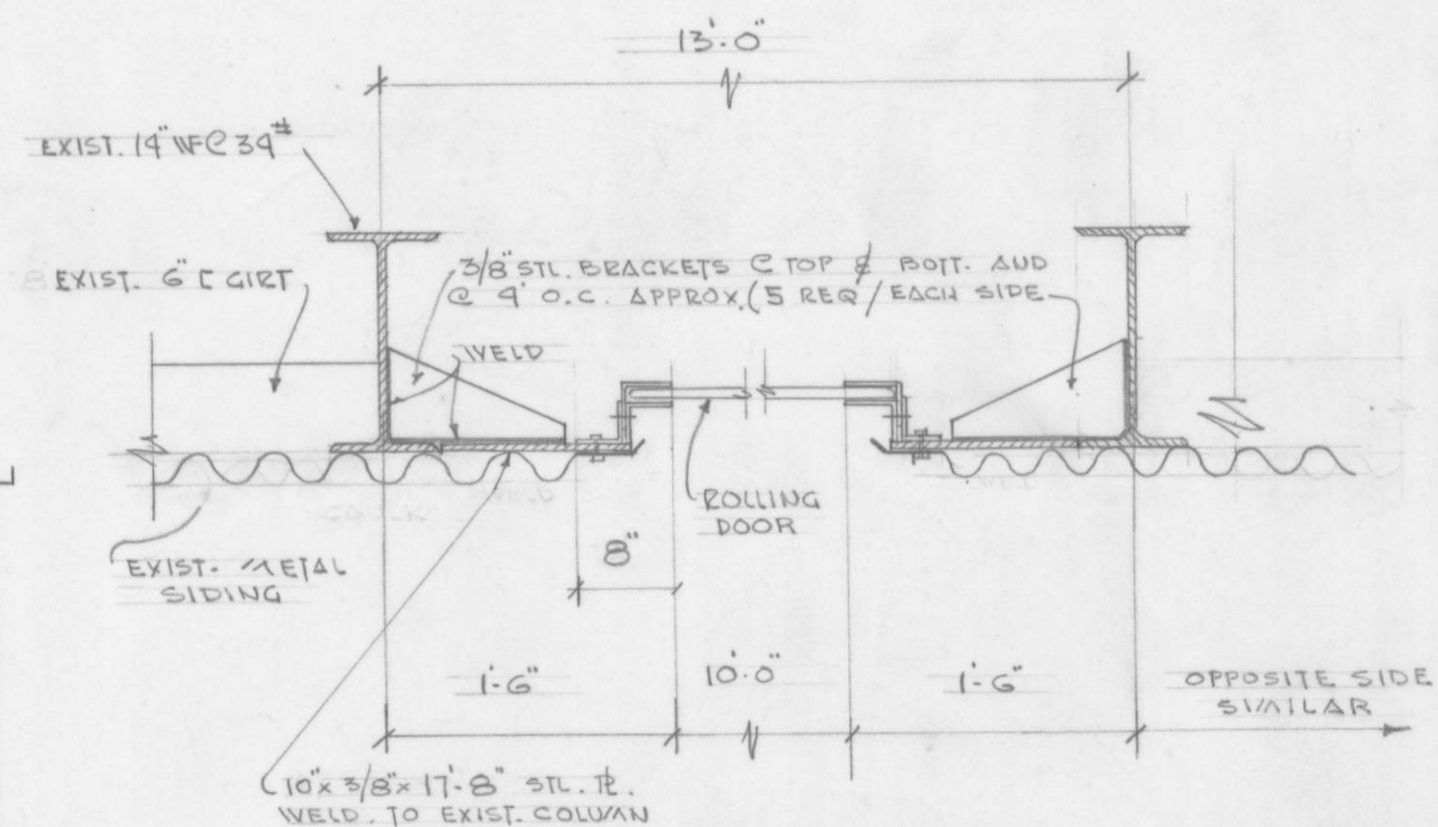
SYMBOL	DESCRIPTION	DATE	APPROVED
REVISIONS			
APPROVED:	BUILDING 5008 PURLIN SPACING	U. S. ARMY ENGINEER WATERWAYS EXPERIMENT STATION CORPS OF ENGINEERS VICKSBURG, MISS. DRAWING NO: C-5008-30 SHEET 2 OF 2	
RECOMMENDED:			
REVIEWED:			
REVIEWED:			
SUBMITTED:			
DRAWN BY:	DATE:	SCALE: NONE	



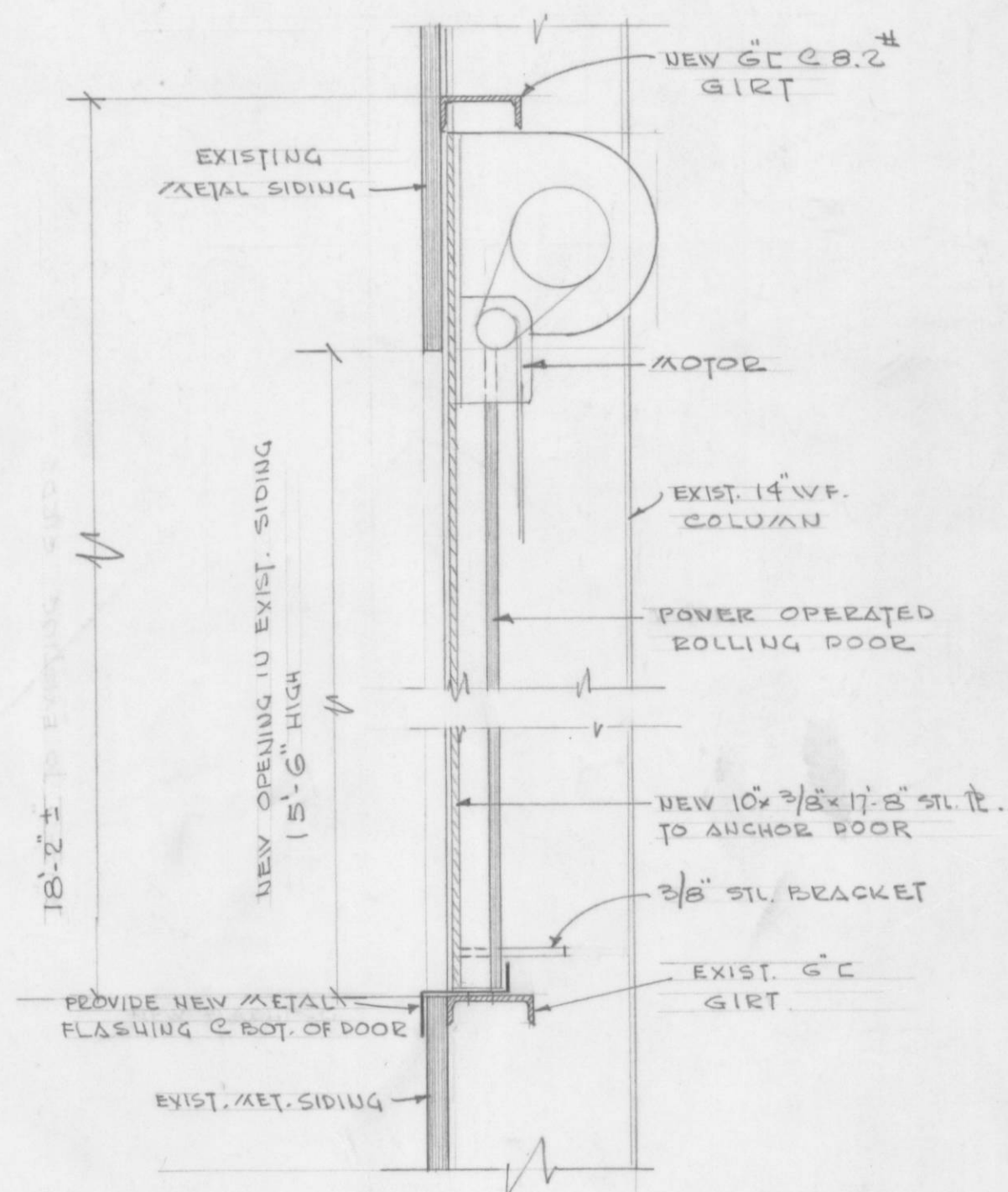
SOUTH WALL
SCALE 1/8" = 1'-0"



NORTH WALL
SCALE 1/8" = 1'-0"



SECTION A-A
SCALE 1" = 1'-0"



SECTION B-B
SCALE 1" = 1'-0"

APPROVED			PROPOSED NEW POWER OPERATED ROLLING DOORS FOR BLAST LOAD GEN. BUILDING		U.S. ARMY ENGINEER WATERWAYS EXPERIMENT STATION CORPS OF ENGINEERS VICKSBURG, MISS.	
COLONEL, CE, DIRECTOR					DRAWING No. C-5008-2	
RECOMMENDED: DIV. CHIEF						
REVIEWED: BRANCH CHIEF						
SUBMITTED: PROJECT ENG.			SCALE: AS SHOWN		SHEET 1 OF 1	
CHECKED FOR PRODUCTION						
SPEC. NO.						
DRAWN	TRACED	CHECKED				
J.E.B.		7-15-64				