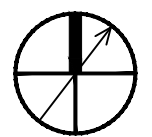


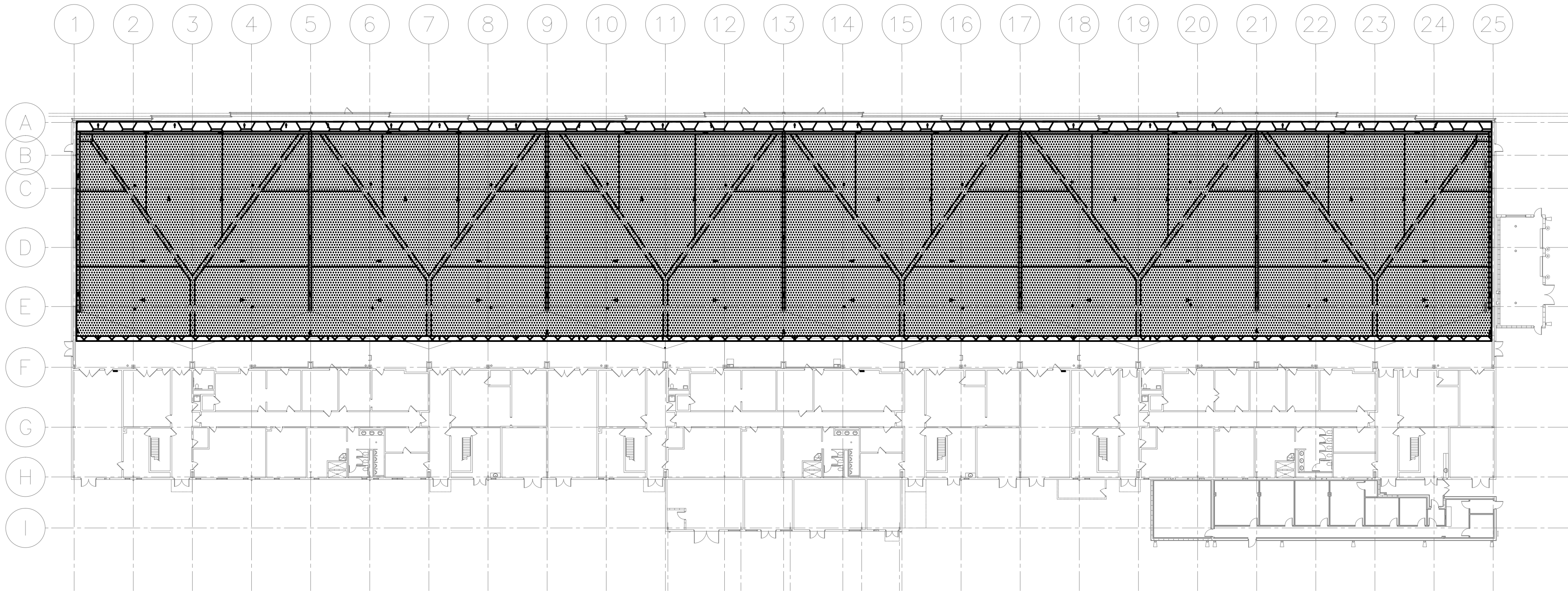
FILE NAME: \\gfhed\gfhed\US\Chertilly\Projects\565\11203457\Digital\_Design\1 - CAD\3.1.2 - Sheet\08 - Sprinkler\1372148-FX118.dwg LAYOUT NAME: 01 PLOTTED: Tuesday, December 13, 2022 - 11:35am USER: rsoach



A1

OVERALL 1st FLOOR PLAN - IGNITABLE LIQUID DRAINAGE FLOOR ASSEMBLY

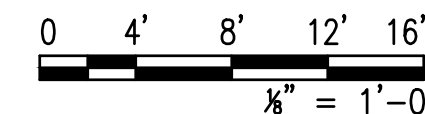
SCALE: 1/32" = 1'-0"



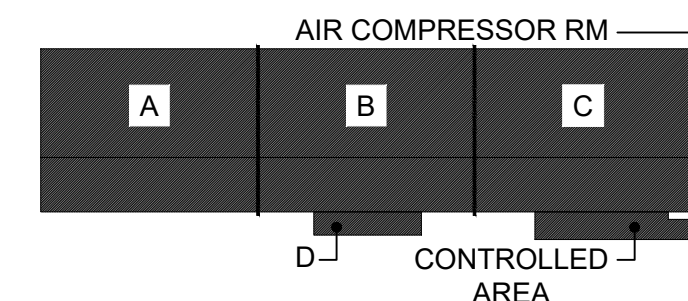
LEGEND

- ILDFA FLOOR
- RAMP - 1:12 SLOPE UP TO FLOOR
- RAMP - 1:24 SLOPE UP TO FLOOR
- AIRCRAFT GROUNDING POINT (REFER TO ELECTRICAL DOCUMENTS FOR EXACT LOCATION AND REQUIREMENTS)
- EXISTING FLOOR TRENCH
- ILDFA ZONING
- FLOW DIRECTION
- ILDFA CONTROL PANEL

GRAPHIC SCALE



KEY PLAN



APPROVED

FOR COMMANDER NAVFAC

ACTIVITY: APPROVED BY KYLE STRAUSBAUGH, NAVFAC FEAD DIRECTOR - FWD OCEANA, VA EMAIL

SATISFACTORY TO DATE: 12/06/2022

DES: MCF DRW: JBK CHR: MUB

FM/DM: EAW/CWJ

BRANCH MANAGER: DSN

CHIEF ENG/ARCH: EJA

FIRE PROTECTION: DSN

NAVAL FACILITIES ENGINEERING SYSTEMS COMMAND

NAVAL FACILITIES ENGINEERING SYSTEMS COMMAND ~ MID-ATLANTIC

NAVAL STATION - NORFOLK VA

NAVAL AIR STATION, OCEANA

VIRGINIA BEACH, VA

HANGAR 404 FIRE PROTECTION AND BUILDING ENVELOPE REPAIRS

OVERALL 1st FLOOR PLAN - ILDFA

SCALE: 1/32" = 1'-0"

PROJECT NO.: 1372148

CONSTR. CONTR. NO.

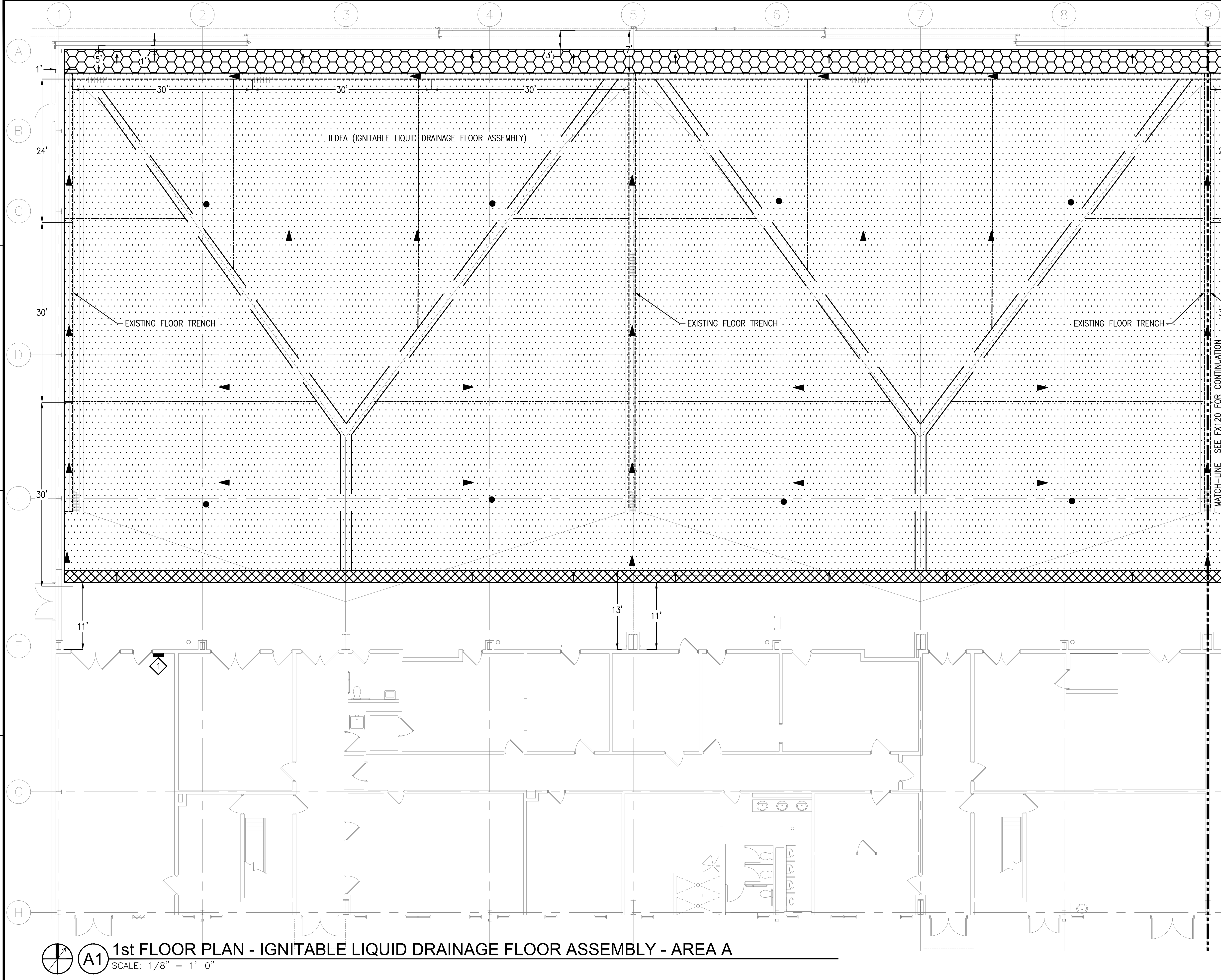
NAVFAC DRAWING NO. 12821798

SHEET 191 OF 382

FX118

DRAWING REVISION: 07 AUG 2018

FILE NAME: \\JAG-SVR-001\Projects\565\1203487\Digital\_Design\1 - CAD\3.1.2 - Sheet\08 - Sprinkler\1372148-FX119.dwg LAYOUT NAME: 01 - PLOTTED: Tuesday, December 13, 2022 - 11:36am USER: roach



### LEGEND

ILDFA FLOOR

RAMP - 1:12 SLOPE UP TO FLOOR

RAMP - 1:24 SLOPE UP TO FLOOR

AIRCRAFT GROUNDING POINT  
(REFER TO ELECTRICAL DOCUMENTS FOR EXACT LOCATION AND REQUIREMENTS)

EXISTING FLOOR TRENCH

ILDFA ZONING

FLOW DIRECTION

### KEY NOTES

1.

ILDFA SYSTEM CONTROL PANEL. REFER TO ELECTRICAL DRAWINGS FOR MORE INFORMATION.

### GRAPHIC SCALE

0

4'

8'

12'

16'

1/8" = 1'-0"

### KEY PLAN

A

B

C

AIR COMPRESSOR RM

CONTROLLED AREA

DEPARTMENT OF THE NAVY

NAVAL FACILITIES ENGINEERING SYSTEMS COMMAND

NAVAL STATION - NORFOLK VA

NAVAL AIR STATION, OCEANA

HANGAR 404 FIRE PROTECTION AND BUILDING ENVELOPE REPAIRS

1st FLOOR PLAN - AREA A - ILDFA

NAVFAC

14601 George Carter Way Suite 102  
Chantilly VA USA 20151  
T 1 571 325 5000 F 1 571 325 5005  
W www.ghe.com

APPROVED

FOR COMMANDER NAVFAC

ACTIVITY

APPROVED BY KYLE STRAUSBAUGH,  
NAVFAC FEAD DIRECTOR - PWD  
OCEANA, VA EMAIL

SATISFACTORY TO DATE

12/06/2022

DIES

MCP

DRW

JBK

CHK

MUB

FM/DM

EAW/CWJ

BRANCH MANAGER

DSN

CHIEF ENG/ARCH

EJA

FIRE PROTECTION

DSN

SCALE:

1/8" = 1'-0"

PROJECT NO.:

1372148

CONSTR. CONTR. NO.

12821776

NAVFAC DRAWING NO.

12821776

SHEET

192

OF

382

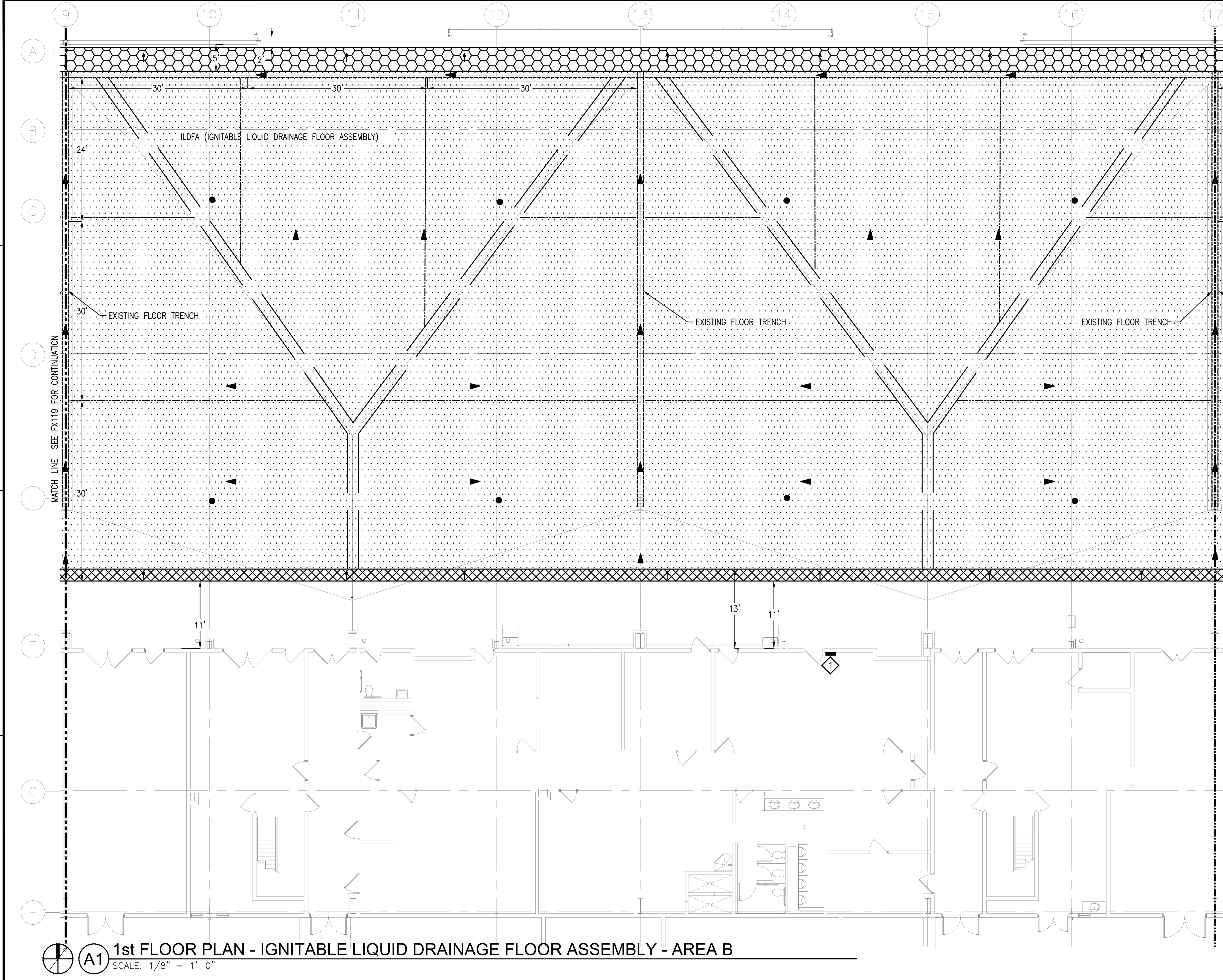
FX119

DRAWFORM REVISION: 07 AUG 2018

**A1** 1st FLOOR PLAN - IGNITABLE LIQUID DRAINAGE FLOOR ASSEMBLY - AREA A  
SCALE: 1/8" = 1'-0"



FILE NAME: \\VAD-SVR-001\Projects\565\1203487\Digital\_Design\1 - CAD\3.1.2 - Sheet\08 - Sprinkler\1372148-FX120.dwg LAYOUT NAME: 02 PLOTTED: Tuesday, December 13, 2022 - 11:36am USER: roach



### LEGEND

ILDFA FLOOR

RAMP - 1:12 SLOPE UP TO FLOOR

RAMP - 1:24 SLOPE UP TO FLOOR

AIRCRAFT GROUNDING POINT  
(REFER TO ELECTRICAL  
DOCUMENTS FOR EXACT LOCATION  
AND REQUIREMENTS)

EXISTING FLOOR TRENCH

ILDFA ZONING

FLOW DIRECTION

### KEY NOTES

1.

ILDFA SYSTEM CONTROL PANEL. REFER TO  
ELECTRICAL DRAWINGS FOR MORE  
INFORMATION.

14501 George Carter Way Suite 102  
Chantilly VA USA 20151  
T 1 571 325 5000 F 1 571 325 5005  
W www.ghd.com

APPROVED

FOR COMMANDER NAVFAC

ACTIVITY  
APPROVED BY KYLE STRAUSBAUGH,  
NAVFAC FEAD DIRECTOR - FWD  
OCEANA, VA EMAIL

SATISFACTORY TO DATE  
12/06/2022

DIES

MCP

DRW

CHK

CHK

MUB

FM/DM

EAW/CWJ

BRANCH MANAGER

DSN

CHIEF ENG/ARCH

EJA

FIRE PROTECTION

DSN

NAVAL FACILITIES ENGINEERING SYSTEMS COMMAND

NAVAL FACILITIES ENGINEERING SYSTEMS COMMAND ~ MID-ATLANTIC

MID-ATLANTIC CORE

NAVAL STATION - NORFOLK VA

VIRGINIA BEACH, VA

HANGAR 404 FIRE PROTECTION AND  
BUILDING ENVELOPE REPAIRS

1st FLOOR PLAN - AREA B - ILDFA

SCALE: 1/8" = 1'-0"

PROJECT NO.: 1372148

CONSTR. CONTR. NO.

NAVFAC DRAWING NO. 12821800

SHEET 193 OF 382

FX120

DRAWFORM REVISION: 07 AUG 2018

GRAPHIC SCALE

0

4'

8'

12'

16'

1/8" = 1'-0"

KEY PLAN

AIR COMPRESSOR RM

A

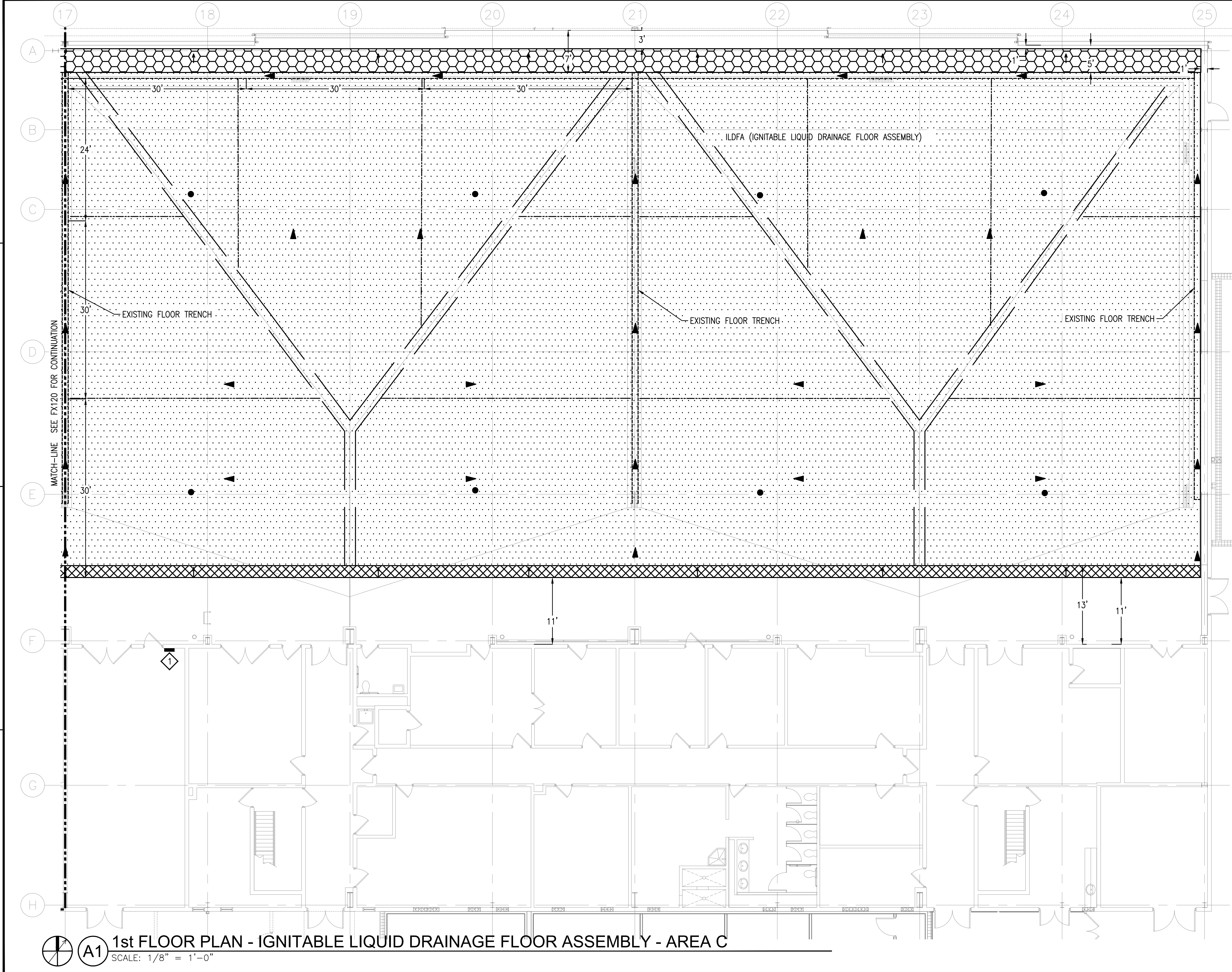
B

C

D

CONTROLLED AREA

FILE NAME: \\JAG-SVR-001\Projects\565\120348\Digital\_Design\1 - CAD\3.1.2 - Sheet\08 - Sprinkler\1372148-FX121.dwg LAYOUT NAME: 03 - PLOTTED: Tuesday, December 13, 2022 - 11:36am USER: roach



### LEGEND

- ILDFA FLOOR
- RAMP - 1:12 SLOPE UP TO FLOOR
- RAMP - 1:24 SLOPE UP TO FLOOR
- AIRCRAFT GROUNDING POINT (REFER TO ELECTRICAL DOCUMENTS FOR EXACT LOCATION AND REQUIREMENTS)
- EXISTING FLOOR TRENCH
- ILDFA ZONING
- FLOW DIRECTION

### KEY NOTES

1. ILDFA SYSTEM CONTROL PANEL. REFER TO ELECTRICAL DRAWINGS FOR MORE INFORMATION.

### GRAPHIC SCALE

0 4' 8' 12' 16'

$\frac{1}{8}'' = 1'-0''$

### KEY PLAN

SYN	DESCRIPTION	DATE	APPR

44601 George Carter Way Suite 102  
Charlottesville VA USA 22911  
T 1 571 325 5000 F 1 571 325 5005  
W www.ghd.com

APPROVED

FOR COMMANDER NAVFAC

ACTIVITY: **APPROVED BY KYLE STRAUSBAUGH,**  
**NAVFAC FEAD DIRECTOR - FWD**  
**OCEANA, VA EMAIL:**

SATISFACTORY TO DATE: **12/06/2022**

DWG	MCP	DRW	CHK	CHK	MUB

PM/DM: **EAW/CWJ**

BRANCH MANAGER: **DSN**

CHIEF ENG/ARCH: **EJA**

FIRE PROTECTION: **DSN**

NAVAL FACILITIES ENGINEERING SYSTEMS COMMAND

NAVAL FACILITIES ENGINEERING SYSTEMS COMMAND ~ MID-ALANTIC

NAVAL STATION - NORFOLK VA

NAVAL AIR STATION, OCEANA

**HANGAR 404 FIRE PROTECTION AND BUILDING ENVELOPE REPAIRS**

**1st FLOOR PLAN - AREA C - ILDFA**

SCALE: **1/8" = 1'-0"**

PROJECT NO.: **1372148**

CONSTR. CONTR. NO.:

NAVFAC DRAWING NO.: **12821801**

SHEET **194** OF **382**

**FX121**

DRAWFORM REVISION: 07 AUG 2018



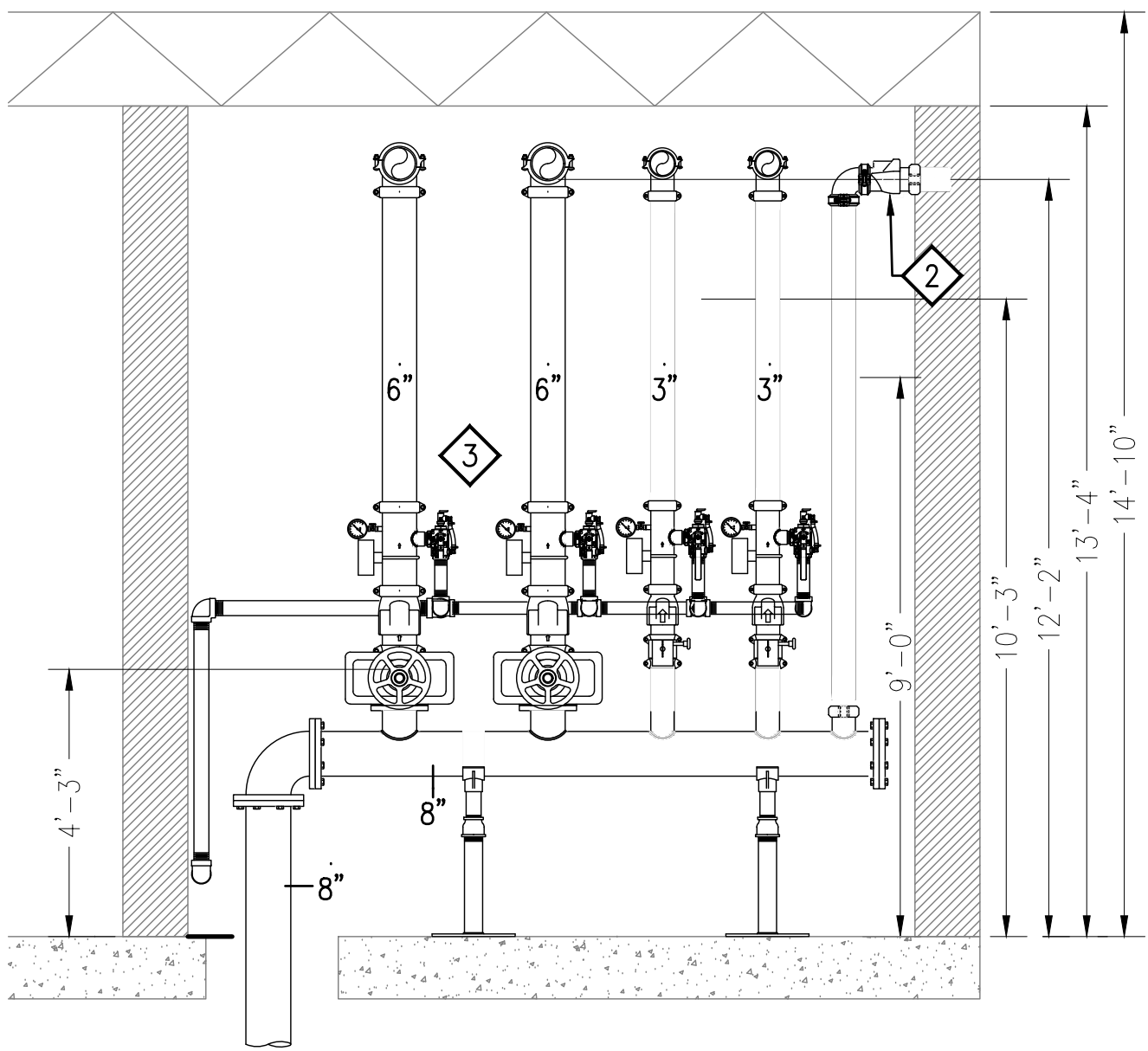
FILE NAME: N:\US\Charlity\Projects\65611203487\Digital\_Design\1 - CAD\3.1.2 - Sheet\08 - Sprinkler\1372148-FX301.dwg LAYOUT NAME: . PLOTTED: Tuesday, December 13, 2022 - 11:36am USER: rsoch

D

C

B

A

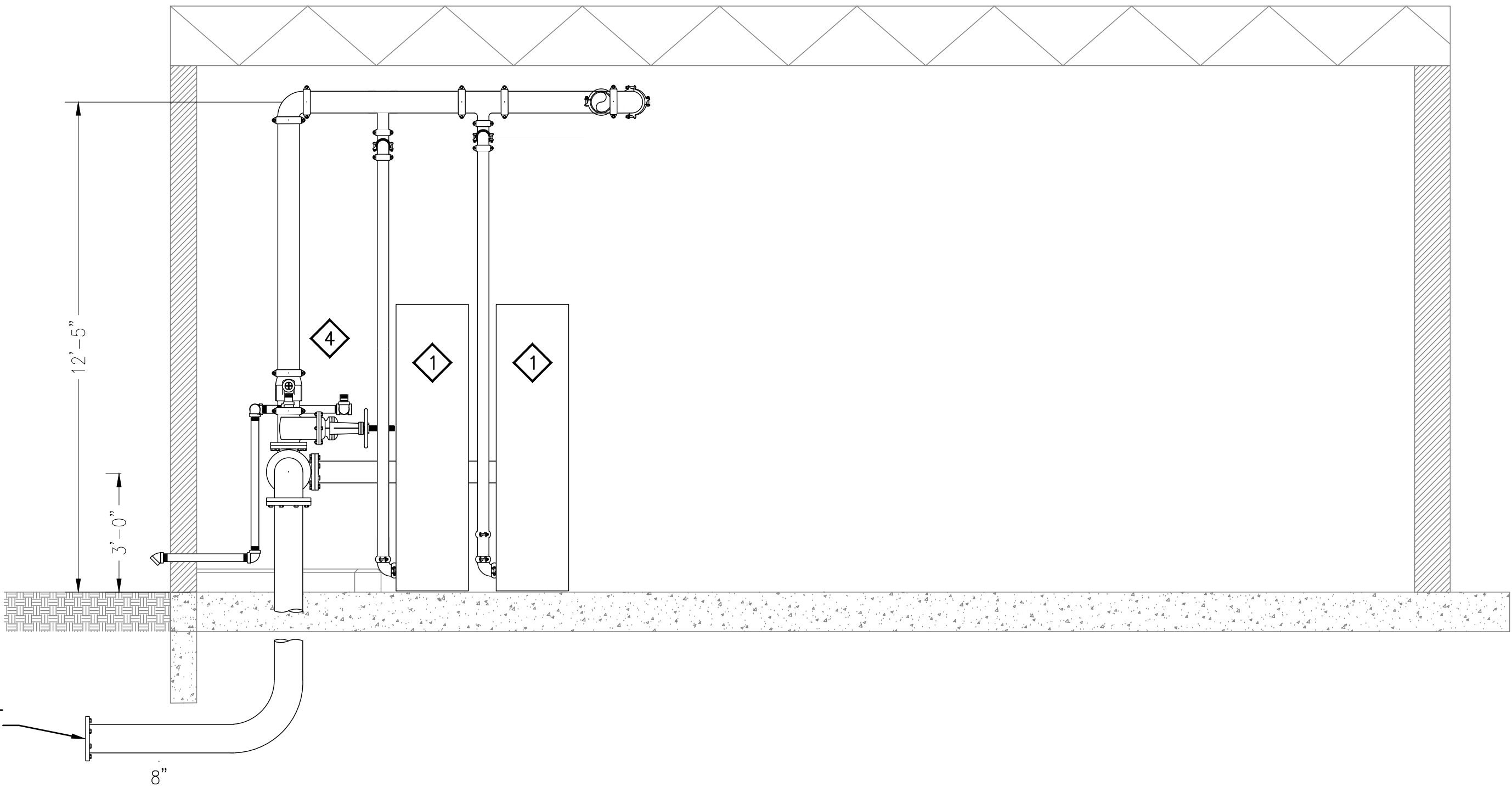


**SECTION - FOAM ROOM 225 - SPRINKLER**  
SCALE: 3/8" = 1'-0" FX401

2



**SECTION - FOAM ROOM 225 - SPRINKLER**  
SCALE: 3/8" = 1'-0" FX401



5

**SHEET NOTES**

1. PROVIDE VALVES, PIPING, HANGERS, TEST HEADER, AND EQUIPMENT FOR A COMPLETE AND OPERATIONAL SYSTEM.
2. REFER TO FX601 FOR RISER DIAGRAM.
3. MINIMUM PIPE SIZES ARE SHOWN ON THE DRAWINGS. SUBMIT HYDRAULIC CALCULATIONS FOR SPRINKLER SYSTEMS.

**KEY NOTES**

1. PROVIDE EXPANSION TANK FOR HANGAR BAY SPRINKLER SYSTEM.
2. PROVIDE CHECK VALVE.
3. PROVIDE WET PIPE RISERS FOR HANGAR BAY CEILING SYSTEM, TYPICAL 2.
4. PROVIDE WET PIPE RISERS FOR OFFICE/ADMIN/SUPPORT AREAS, TYPICAL 2.



APPROVED

FOR COMMANDER NAVFAC

ACTIVITY:  
\*APPROVED BY KYLE STRAUSBAUGH,  
NAVFAC FEAD DIRECTOR - FWD  
OCEANA, VA EMAIL:

SATISFACTORY TO DATE 12/06/2022

DES MCF DRW JBI CHR MUB

FM/DM EAW/CWJ

BRANCH MANAGER DSN

CHIEF ENG/ARCH EJA

FIRE PROTECTION DSN

DEPARTMENT OF THE NAVY  
NAVAL FACILITIES ENGINEERING SYSTEMS COMMAND  
NAVAL STATION - NORFOLK VA  
NAVAL AIR STATION, OCEANA  
HANGAR 404 FIRE PROTECTION AND  
BUILDING ENVELOPE REPAIRS  
SECTION - FOAM ROOM 225 - SPRINKLER

SCALE: 3/8" = 1'-0"

PROJECT NO.: 1372148

CONSTR. CONTR. NO.

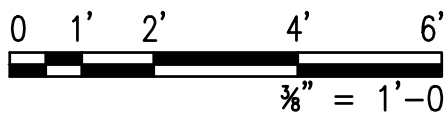
NAVFAC DRAWING NO. 12821797

SHEET 195 OF 382

**FX301**

DRAWFORM REVISION: 07 AUG 2018

GRAPHIC SCALE



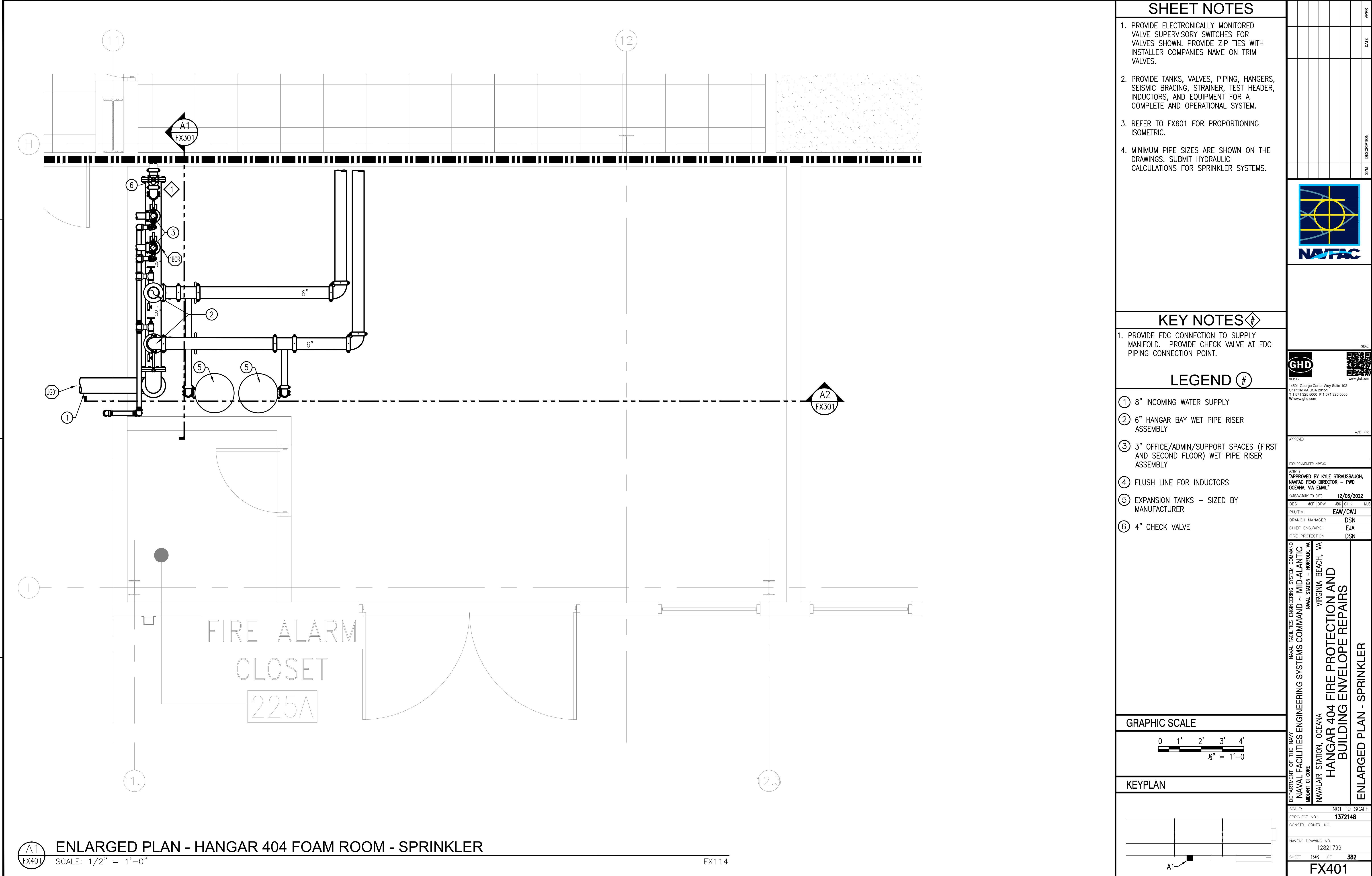
D

C

B

A

FILE NAME: \\V02-SVR-001\Projects\565\1203487\Digital\_Design\1 - CAD\3.1.2 - Sheet\08 - Sprinkler\1372148-FX401.dwg LAYOUT NAME: FX401 PLOTTED: Tuesday, December 13, 2022 11:36am USER: rosch



SHEET NOTES

1. PROVIDE ELECTRONICALLY MONITORED VALVE SUPERVISORY SWITCHES FOR VALVES SHOWN. PROVIDE ZIP TIES WITH INSTALLER COMPANIES NAME ON TRIM VALVES.
2. PROVIDE TANKS, VALVES, PIPING, HANGERS, SEISMIC BRACING, STRAINER, TEST HEADER, INDUCTORS, AND EQUIPMENT FOR A COMPLETE AND OPERATIONAL SYSTEM.
3. REFER TO FX601 FOR PROPORTIONING ISOMETRIC.
4. MINIMUM PIPE SIZES ARE SHOWN ON THE DRAWINGS. SUBMIT HYDRAULIC CALCULATIONS FOR SPRINKLER SYSTEMS.

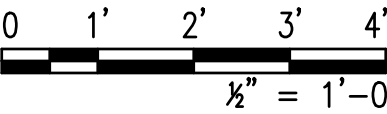
KEY NOTES

1. PROVIDE FDC CONNECTION TO SUPPLY MANIFOLD. PROVIDE CHECK VALVE AT FDC PIPING CONNECTION POINT.

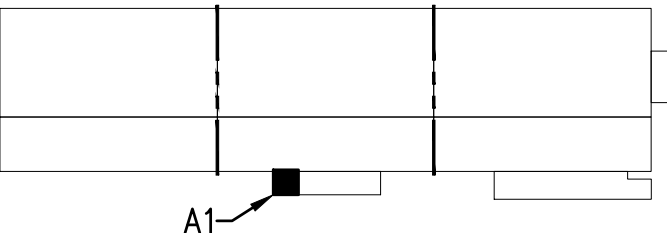
LEGEND

- 1 8" INCOMING WATER SUPPLY
- 2 6" HANGAR BAY WET PIPE RISER ASSEMBLY
- 3 3" OFFICE/ADMIN/SUPPORT SPACES (FIRST AND SECOND FLOOR) WET PIPE RISER ASSEMBLY
- 4 FLUSH LINE FOR INDUCTORS
- 5 EXPANSION TANKS - SIZED BY MANUFACTURER
- 6 4" CHECK VALVE

GRAPHIC SCALE



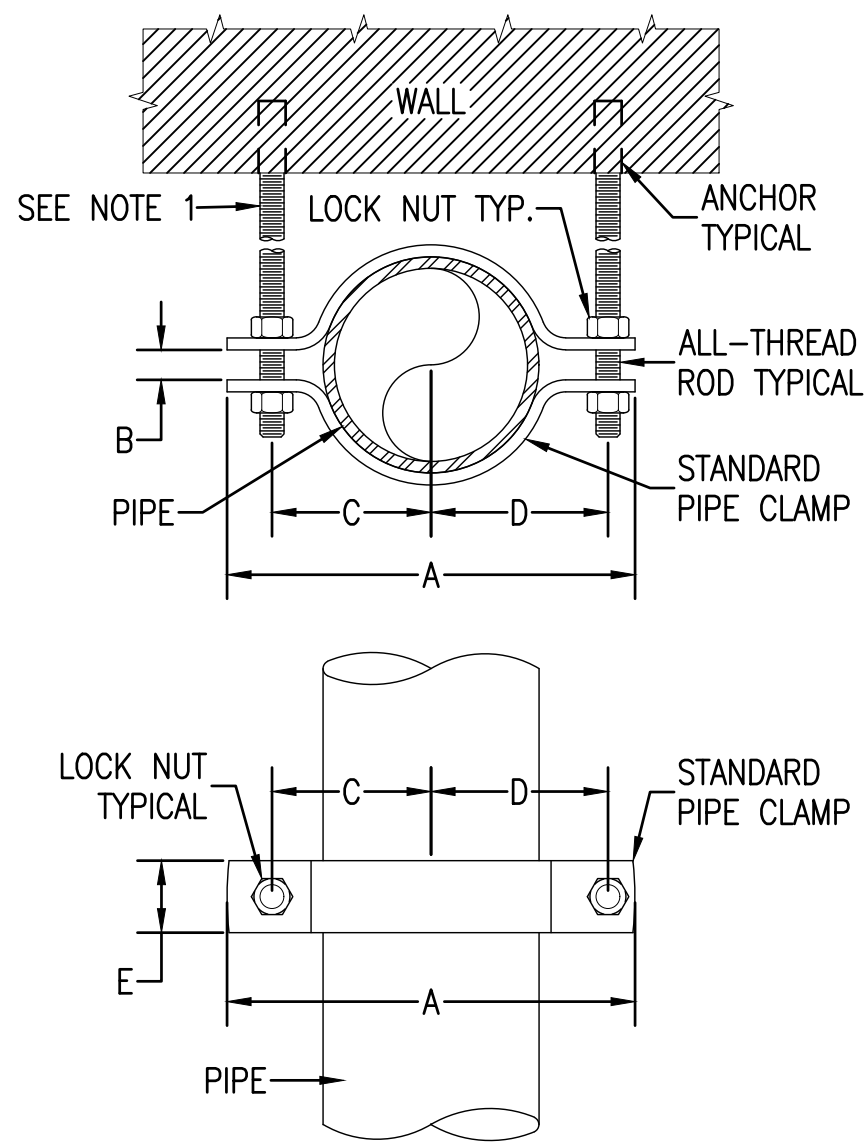
KEYPLAN



APPROVED	DATE	APPR
FOR COMMANDER NAVFAC		
ACTIVITY	APPROVED BY KYLE STRAUSBAUGH, NAVFAC FEAD DIRECTOR - FWD OCEANA, VA EMAIL	
SATISFACTORY TO DATE	12/06/2022	
DWG	MCP	DRW
FM/DM	EAU/CWJ	
BRANCH MANAGER	DSN	
CHIEF ENG/ARCH	EJA	
FIRE PROTECTION	DSN	
DEPARTMENT OF THE NAVY	NAVAL FACILITIES ENGINEERING SYSTEMS COMMAND	
NAVAL FACILITIES ENGINEERING SYSTEMS COMMAND	MID-ALANTIC	
NAVAL STATION - NORFOLK VA	VIRGINIA BEACH, VA	
NAVALAIR STATION, OCEANA	HANGAR 404 FIRE PROTECTION AND BUILDING ENVELOPE REPAIRS	
ENLARGED PLAN - SPRINKLER		
SCALE:	NOT TO SCALE	
PROJECT NO.:	1372148	
CONSTR. CONTR. NO.		
NAVFAC DRAWING NO.	12821799	
SHEET	196	OF 382
FX401		
DRAWING REVISION: 07 AUG 2018		



FILE NAME: N:\US (Charlity Projects)\65611203487\Digital\_Design\1 - CAD\3.1.2 - Sheet\08 - Sprinkler\1372148-FX501.dwg PLOTTED: Tuesday, December 13, 2022 - 11:56am USER: rcaoh



PIPE SIZE	A	B	C	D	E	ROD SIZE
1	3 <sup>9</sup> / <sub>16</sub>	1 <sup>1</sup> / <sub>4</sub>	1 <sup>1</sup> / <sub>4</sub>	1 <sup>5</sup> / <sub>16</sub>	1 <sup>1</sup> / <sub>4</sub>	5 <sup>1</sup> / <sub>16</sub>
1 <sup>1</sup> / <sub>4</sub>	4 <sup>3</sup> / <sub>16</sub>	3 <sup>1</sup> / <sub>8</sub>	1 <sup>1</sup> / <sub>4</sub>	1 <sup>1</sup> / <sub>16</sub>	1 <sup>1</sup> / <sub>4</sub>	5 <sup>1</sup> / <sub>16</sub>
1 <sup>1</sup> / <sub>2</sub>	4 <sup>9</sup> / <sub>16</sub>	3 <sup>1</sup> / <sub>8</sub>	1 <sup>5</sup> / <sub>8</sub>	1 <sup>1</sup> / <sub>8</sub>	1 <sup>1</sup> / <sub>4</sub>	5 <sup>1</sup> / <sub>16</sub>
2	5 <sup>5</sup> / <sub>16</sub>	3 <sup>1</sup> / <sub>8</sub>	2	2 <sup>1</sup> / <sub>4</sub>	1 <sup>1</sup> / <sub>4</sub>	1 <sup>1</sup> / <sub>2</sub>
2 <sup>1</sup> / <sub>2</sub>	6 <sup>1</sup> / <sub>16</sub>	3 <sup>1</sup> / <sub>8</sub>	2 <sup>1</sup> / <sub>2</sub>	2 <sup>3</sup> / <sub>4</sub>	1 <sup>1</sup> / <sub>4</sub>	1 <sup>1</sup> / <sub>2</sub>
3	7	3 <sup>1</sup> / <sub>8</sub>	2 <sup>3</sup> / <sub>4</sub>	3 <sup>1</sup> / <sub>16</sub>	1 <sup>1</sup> / <sub>4</sub>	1 <sup>1</sup> / <sub>2</sub>
4	8 <sup>1</sup> / <sub>2</sub>	3 <sup>1</sup> / <sub>8</sub>	3 <sup>9</sup> / <sub>16</sub>	3 <sup>1</sup> / <sub>16</sub>	1 <sup>1</sup> / <sub>2</sub>	1 <sup>1</sup> / <sub>2</sub>
5	9 <sup>9</sup> / <sub>16</sub>	3 <sup>1</sup> / <sub>4</sub>	3 <sup>7</sup> / <sub>8</sub>	4 <sup>1</sup> / <sub>8</sub>	2	5 <sup>1</sup> / <sub>8</sub>
6	11 <sup>1</sup> / <sub>16</sub>	3 <sup>1</sup> / <sub>4</sub>	4 <sup>1</sup> / <sub>8</sub>	5 <sup>1</sup> / <sub>8</sub>	2	3 <sup>1</sup> / <sub>4</sub>
8	13 <sup>5</sup> / <sub>16</sub>	1	5 <sup>5</sup> / <sub>8</sub>	6	2	3 <sup>1</sup> / <sub>4</sub>
10	16 <sup>1</sup> / <sub>2</sub>	1	7 <sup>1</sup> / <sub>4</sub>	7 <sup>1</sup> / <sub>4</sub>	2	7 <sup>1</sup> / <sub>8</sub>
12	18 <sup>1</sup> / <sub>2</sub>	1	8 <sup>1</sup> / <sub>4</sub>	8 <sup>1</sup> / <sub>4</sub>	2	7 <sup>1</sup> / <sub>8</sub>

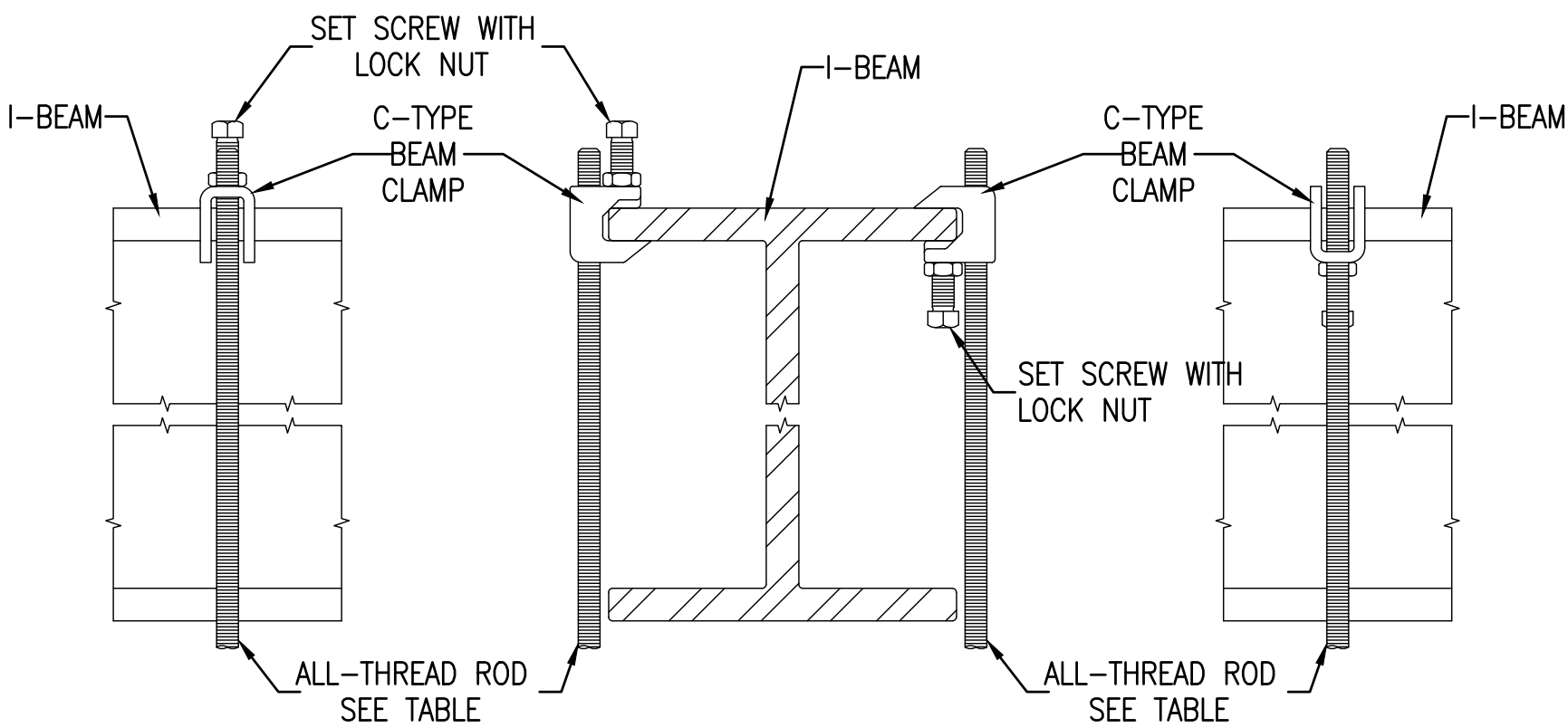
ALL SIZES ARE IN INCHES

NOTES:

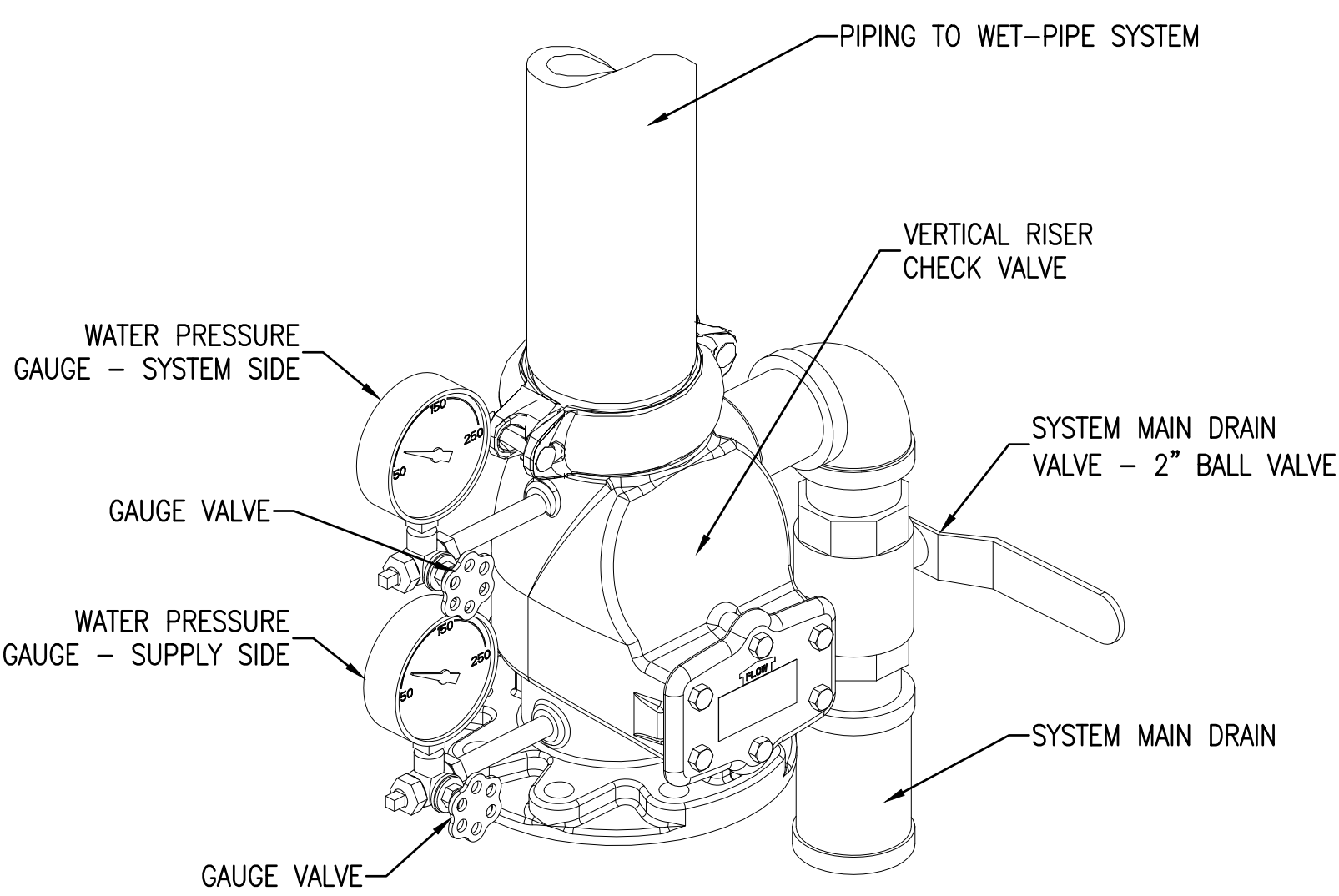
1. ALL-THREAD ROD LENGTH MUST BE CUT IN FIELD. LENGTH WILL VARY BASED ON DISTANCES OF PIPE FROM MOUNTING WALL AND PIPE FITTINGS.

2. THIS ASSEMBLY MUST BE USED FOR PIPE RESTRAINT ONLY. THIS ASSEMBLY MUST NOT BE USED TO SUPPORT PIPE IN HORIZONTAL POSITIONS.

ALL SIZES IN INCHES	NOMINAL PIPE SIZE									
	1"	1 <sup>1</sup> / <sub>4</sub> "	1 <sup>1</sup> / <sub>2</sub> "	2"	2 <sup>1</sup> / <sub>2</sub> "	3"	4"	5"	6"	8"
ROD DIAMETER	3 <sup>1</sup> / <sub>8</sub> "	3 <sup>1</sup> / <sub>8</sub> "	3 <sup>1</sup> / <sub>8</sub> "	3 <sup>1</sup> / <sub>8</sub> "	3 <sup>1</sup> / <sub>8</sub> "	3 <sup>1</sup> / <sub>8</sub> "	3 <sup>1</sup> / <sub>8</sub> "	1 <sup>1</sup> / <sub>2</sub> "	1 <sup>1</sup> / <sub>2</sub> "	1 <sup>1</sup> / <sub>2</sub> "
SIZE OF SET SCREW	3 <sup>1</sup> / <sub>8</sub> "	3 <sup>1</sup> / <sub>8</sub> "	3 <sup>1</sup> / <sub>8</sub> "	3 <sup>1</sup> / <sub>8</sub> "	1 <sup>1</sup> / <sub>2</sub> "	1 <sup>1</sup> / <sub>2</sub> "	1 <sup>1</sup> / <sub>2</sub> "	1 <sup>1</sup> / <sub>2</sub> "	1 <sup>1</sup> / <sub>2</sub> "	5 <sup>1</sup> / <sub>8</sub> "



C-TYPE BEAM CLAMP MUST BE UTILIZED IN THE TOP OF BEAM CONFIGURATION ONLY AND MUST NOT BE USED TO HANG PIPE FROM BAR JOISTS.



### C1 PIPE RESTRAINING CLAMP

SCALE: NOT TO SCALE

FX501

### C2 INSTALLATION OF STEEL C-CLAMP W/ LOCKNUT

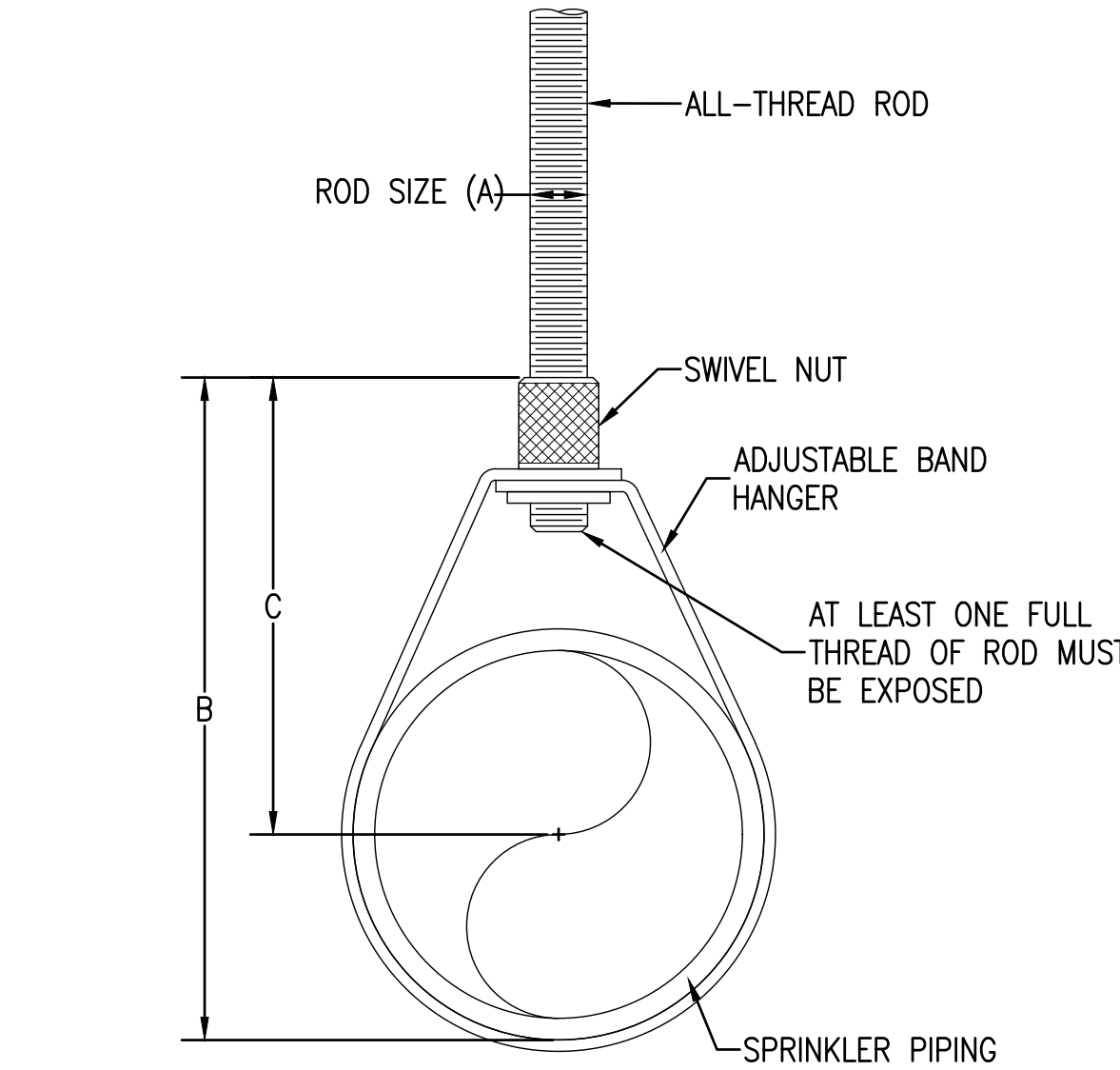
SCALE: NOT TO SCALE

FX501

### D4 RISER CHECK VALVE WITH TRIM

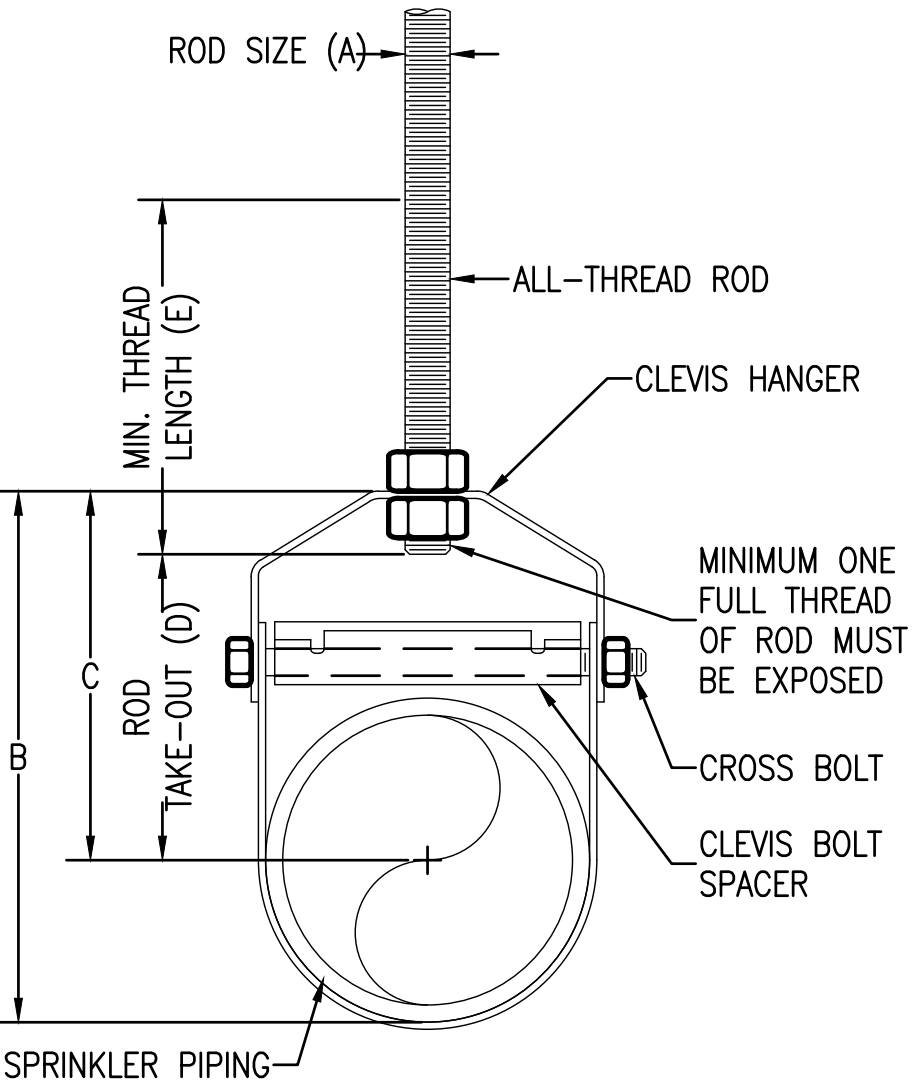
SCALE: NOT TO SCALE TO SPRINKLER SYSTEM - SEE FLOOR PLAN FOR CONTINUATION

FX501



PIPE SIZE	A	B	C
1/2	3/8	3/8	2 5/8
3/4	3/8	3/8	2 1/2
1	3/8	3/8	2 5/8
1 1/4	3/8	3/4	2 1/8
1 1/2	3/8	3/8	2 1/8
2	3/8	4 1/2	3
2 1/2	3/8	5 5/8	4 1/8
3	3/8	5 7/8	4
4	3/8	7 3/8	5
5	1/2	9 1/8	6 1/4
6	1/2	10 1/8	6 3/4
8	1/2	13 3/8	8 3/4

ALL SIZES ARE IN INCHES



PIPE SIZE	A	B	C	D	E
1/2	3/8	2 5/8	1 1/16	1 5/16	2 1/2
3/4	3/8	2 1/16	1 1/8	1 1/8	2 1/2
1	3/8	2 1/16	2 1/8	1 3/8	2 1/2
1 1/4	3/8	3 1/16	2 3/8	1 1/16	2 1/2
1 1/2	3/8	4	3	2 1/4	2 1/2
2	3/8	4 1/2	3 1/4	2 1/2	2 1/2
2 1/2	3/8	5 5/16	4	3 1/16	2 1/2
3	3/8	6 3/4	4 7/8	3 15/16	2 1/2
4	3/8	7 1/16	5 1/2	4 1/8	2 1/2
5	1/2	9 1/8	6 1/8	5	2 1/2
6	1/2	10 1/16	6 5/16	5 1/16	3
8	1/2	12 3/4	8 3/8	7 1/8	3 1/2
10	5/8	15 1/4	9 13/16	8 3/8	3 1/2
12	5/8	17 5/8	11 3/16	9 1/16	3 1/2

ALL SIZES ARE IN INCHES

### C2 INSTALLATION OF ADJUSTABLE BAND HANGER

SCALE: NOT TO SCALE

FX501

### C4 INSTALLATION OF CLEVIS HANGER

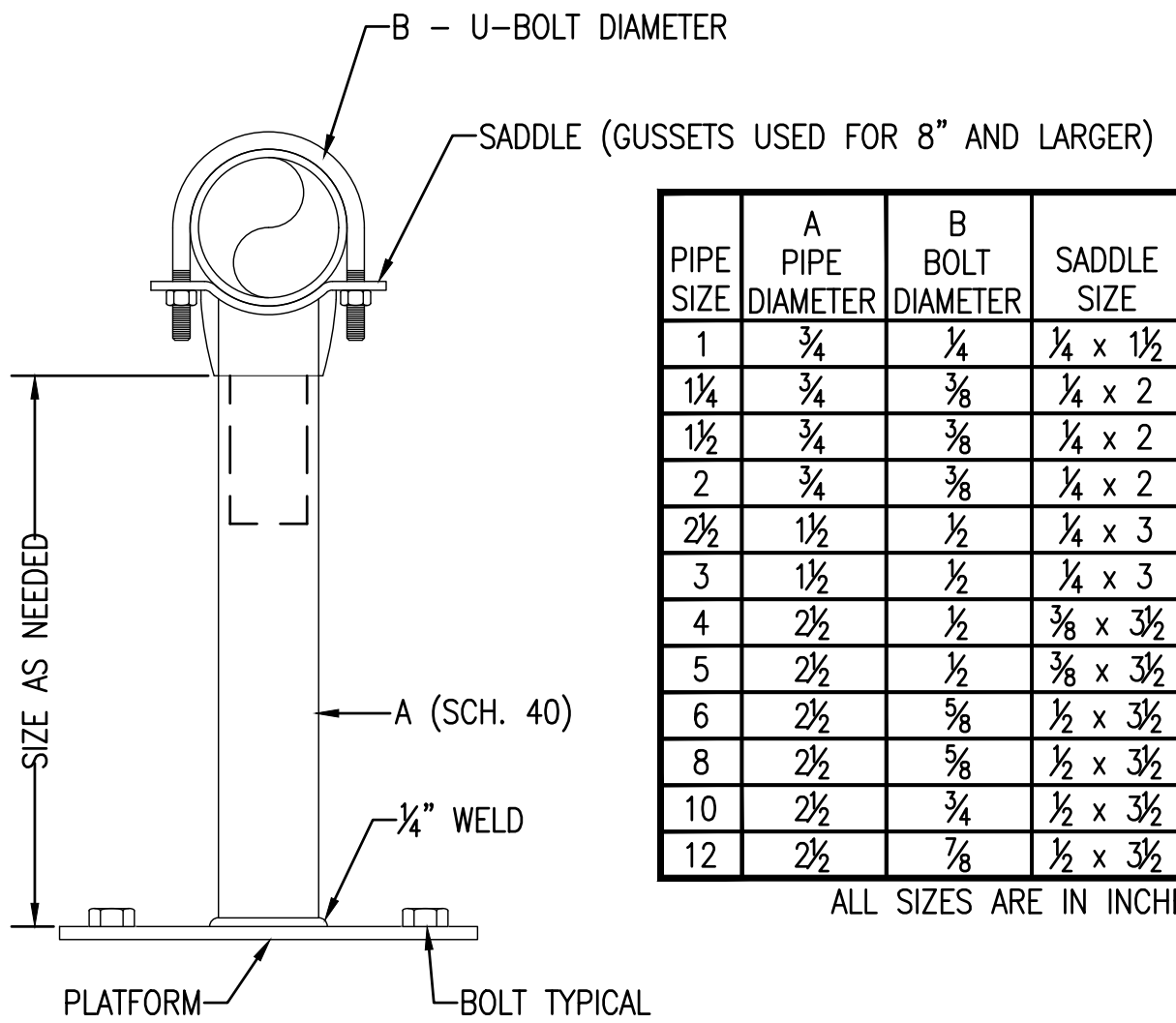
SCALE: NOT TO SCALE

FX501

### B4 MINIMUM 6-INCH HANGAR BAY SPRINKLER RISER

SCALE: NOT TO SCALE

FX301



PIPE SIZE	A PIPE DIAMETER	B BOLT DIAMETER	SADDLE SIZE	PLATFORM SIZE	BOLT SIZE
1	3/4	1/4	1/4 x 1 1/2	1/4 x 6 x 6	3/8
1 1/4	3/4	3/8	1/4 x 2	1/4 x 6 x 6	5/8
1 1/2	3/4	3/8	1/4 x 2	1/4 x 6 x 6	5/8
2	3/4	3/8	1/4 x 2	1/4 x 6 x 6	5/8
2 1/2	1 1/2	1/2	1/4 x 3	3/8 x 8 x 8	3/4
3	1 1/2	1/2	1/4 x 3	3/8 x 8 x 8	3/4
4	2 1/2	1/2	3/8 x 3 1/2	3/8 x 12 x 12	3/4
5	2 1/2	1/2	3/8 x 3 1/2	3/8 x 12 x 12	3/4
6	2 1/2	5/8	1/2 x 3 1/2	3/8 x 12 x 12	3/4
8	2 1/2	5/8	1/2 x 3 1/2	3/8 x 12 x 12	3/4
10	2 1/2	3/4	1/2 x 3 1/2	3/8 x 12 x 12	3/4
12	2 1/2	7/8	1/2 x 3 1/2	3/8 x 12 x 12	3/4

ALL SIZES ARE IN INCHES

### A4 PIPE STAND

SCALE: NOT TO SCALE

FX301

APPROVED

FOR COMMANDER NAVFAC

ACTIVITY

APPROVED BY KYLE STRAUSSBAUGH, NAVFAC FEAD DIRECTOR - PWD OCEANA, VA EMAIL: kyle.straussbaugh@navfac.navy.mil

SATISFACTORY TO DATE: 12/06/2022

DES: MOP: DRW: JMK: CHR: MUB

FM/DM: EAW/CWJ

BRANCH MANAGER: DSN

CHIEF ENG/ARCH: EJA

FIRE PROTECTION: DSN

DEPARTMENT OF THE NAVY

NAVAL FACILITIES ENGINEERING SYSTEMS COMMAND

NAVAL STATION - OCEANA

NAVAL STATION - NORFOLK VA

NAVAL STATION - VIRGINIA BEACH, VA

HANGAR 404 FIRE PROTECTION AND BUILDING ENVELOPE REPAIRS

DETAILS - SPRINKLER

SCALE: NOT TO SCALE

PROJECT NO.: 1372148

CONSTR. CONTR. NO.

NAVFAC DRAWING NO. 12821802

SHEET 197 OF 382

FX501

DRAWING REVISION: 07 AUG 2018







