

Finish Plans & Schedules

1

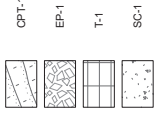
2

3

4

5

FLOOR FINISH KEY



GENERAL FINISH NOTES

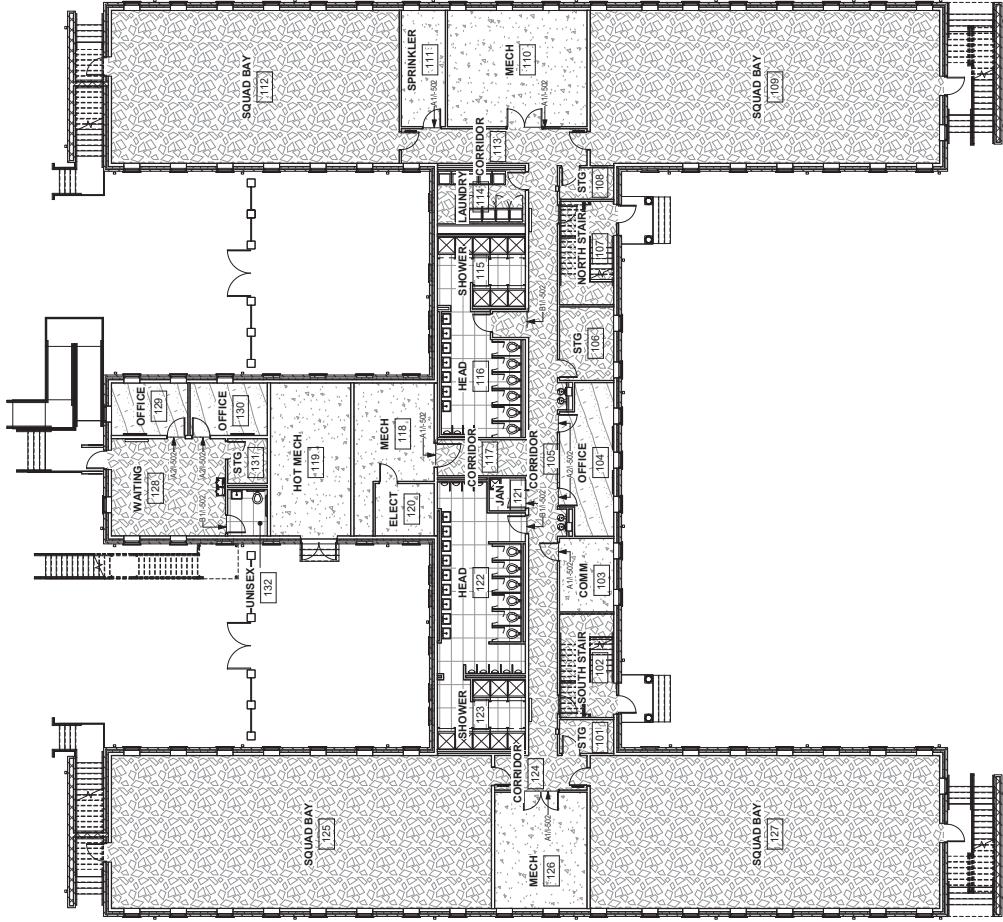
- A. FINISHES INDICATED ARE THE APPROVED BASIS OF DESIGN TO CONVEY COLOR, PATTERN, TEXTURE AND SALIENT CHARACTERISTICS ONLY. THE LISTING OF MANUFACTURER INFORMATION IS NOT INTENDED TO LIMIT THE SELECTION OF PRODUCTS. THE CONTRACTOR SHALL BE RESPONSIBLE FOR PRODUCTS MEETING THESE CRITERIA WILL BE CONSIDERED AND MUST BE REVIEWED BY THE INTERIOR DESIGNER OF RECORD (IDOR) AND THE NAVFAC INTERIOR DESIGNER AND APPROVED BY THE CONTRACTING OFFICER. DUE TO ORDERING LEAD TIMES, IT IS THE CONTRACTOR'S RESPONSIBILITY TO ORDER ALL MATERIALS IN TIME TO AVOID DELAYS.
- C. COORDINATE THERMOSTAT LOCATIONS WITH MECHANICAL CONTRACTOR. COORDINATE THERMOSTAT LOCATIONS WITH THE MECHANICAL CONTRACTOR. COORDINATE THERMOSTAT LOCATIONS WITH THE MECHANICAL CONTRACTOR. DO NOT INSTALL THERMOSTATS IN THE CENTER OF A WALL.
- D. SPRAY PAINT ELECTRICAL PANELS, ACCESS PANELS, AND EXPANSION JOINTS TO MATCH THE ADJACENT WALL COLOR.
- E. ALL FLOORING TRANSITIONS MUST MEET AIA GUIDELINES. FLOORING TRANSITIONS OCCURRING UNDER DOORS MUST BE CENTERED UNDER DOOR.
- F. ALL WALL AND CEILING FINISHES IN VERTICAL EXIT WAYS, EXIT LOBBIES, AND EXIT CORRIDORS MUST MEET MINIMUM AIA GUIDELINES.
- G. ROOMS IDENTIFIED TO RECEIVE TILE ON WALLS MUST INCLUDE METAL TRANSITIONS ON ALL OUTSIDE AND INSIDE CORNERS AS WELL AS THE INTERSECTION BETWEEN FLOOR AND WALL TILE WHERE APPLICABLE FOR A COMPLETE INSTALLATION.
- H. INSTALL CORNER GUARDS (CG-1) ON ALL OUTSIDE CORNERS. INSTALL END CAPS ON ALL OPEN EDED WALLS. CORNER GUARDS AND END CAPS MUST BE FULL HEIGHT AND SHOULD NOT BE USED ON CMU WALLS, TILED WALLS, OR MANUFACTURED STONE WALLS.
- I. REPAIRS TO EXISTING RESIN/EPoxy COVE BASE AREAS RECEIVING EPOXY RESINOUS FLOORINGS TO RECEIVE INTEGRAL RESINOUS COVE BASE.
- J. FINISHED CONCRETE FLOORS MUST BE SEALED TO ALLOW NO CONDENSATION TO PENETRATE THROUGH FINISHED SURFACE. TO BE PAINTED (PNT-1) UNLESS OTHERWISE INDICATED. ALL GYM CEILINGS TO BE PAINTED (PNT-2). ALL HOLLOW METAL DOORS AND DOOR FRAMES TO BE PAINTED (PNT-3) UNLESS OTHERWISE INDICATED.
- L. INTERIOR WOOD DOORS TO BE FINISHED (WD-1).
- M. ALL WINDOW SILLS TO BE SOLID SURFACE (SS-2).
- N. ALL MATERIALS/PRODUCTS ARE TO BE INSTALLED PER MANUFACTURER'S INSTALLATION REQUIREMENTS.



FLOOR FINISH NOTES

- A. HATCH PATTERN DOES NOT INDICATE DIRECTION OR METHOD OF FLOORING INSTALLATION.
- B. SEE I-401 FOR FINISH LEGEND.

A1 FIRST FLOOR FINISH PLAN
SCALE: 3/32" = 1'-0"



GRAPHIC SCALE:

3/32" = 1'-0" 0' 6" 12" 18"

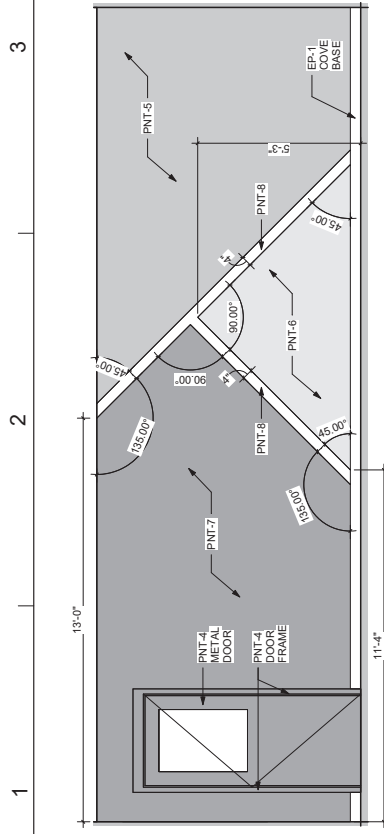
1

2

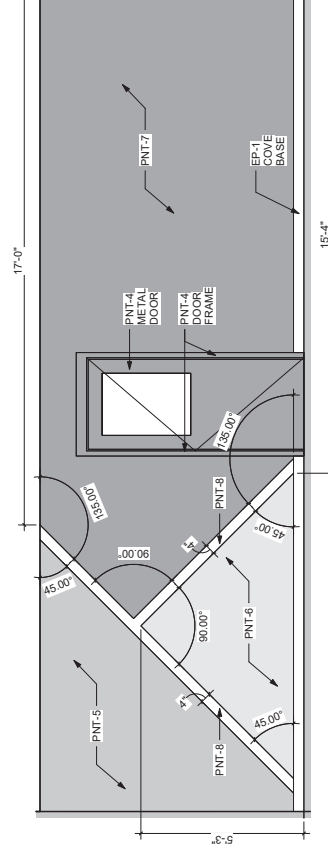
3

4

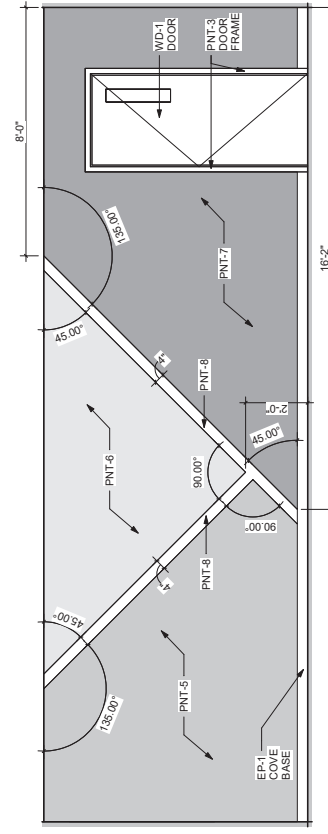
5



C1 ACCENT WALL ELEVATION @ SQUAD BAY BACK WALL



B1 ACCENT WALL ELEVATION @ SQUAD BAY BACK WALL

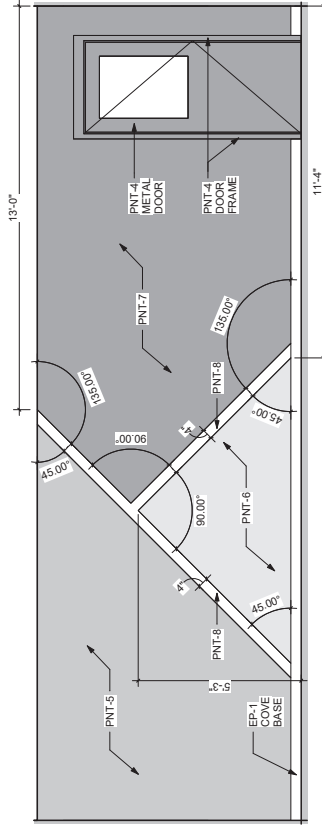


A1 ACCENT WALL ELEVATION @ SQUAD BAY ENTRY WALL

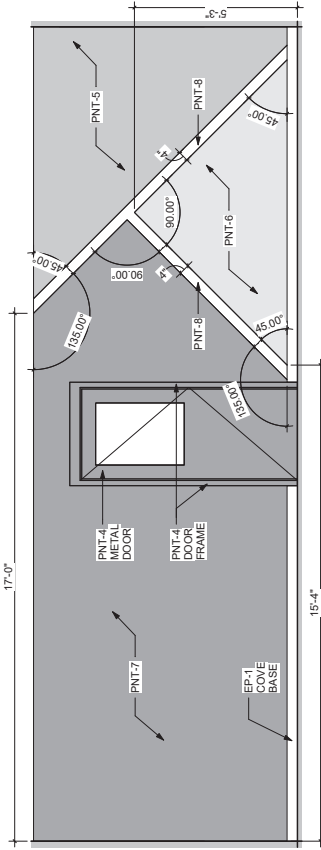


GRAPHIC SCALE:

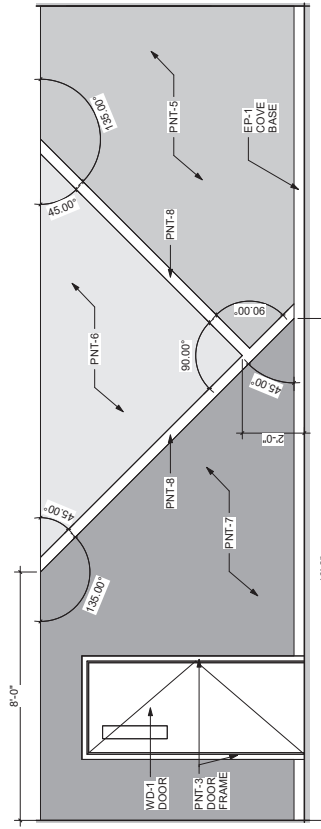
[illegible]



24 ACCENT WALL ELEVATION @ SQUAD BAY BACK WALL



D1 ACCENT WALL ELEVATION @ SQUAD BAY BACK WALL

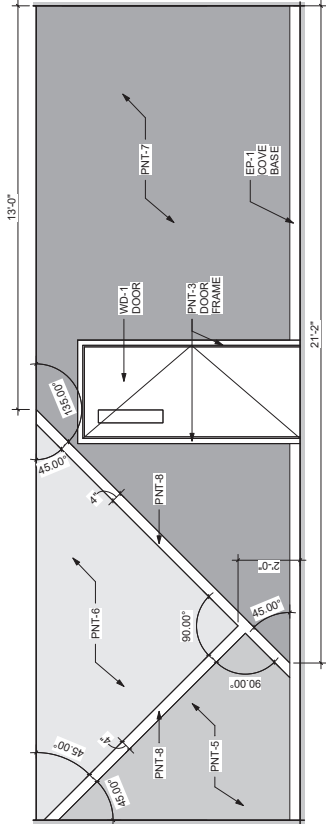


ACCENT WALL ELEVATION @ SOLIAD BAY ENTRY WALL

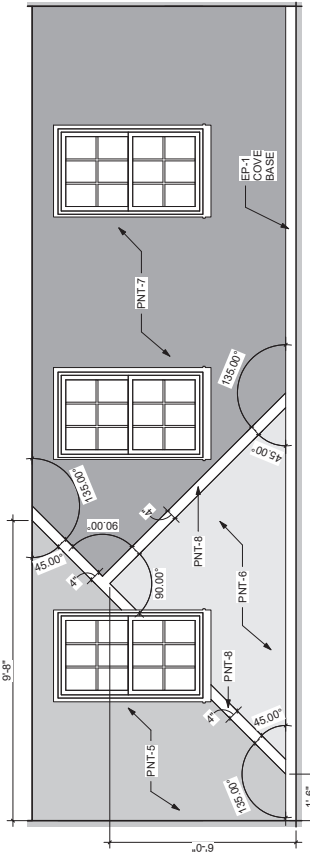
GENERAL FINISH NOTES

- A. FINISHES INDICATED ARE THE APPROVED BASIS OF DESIGN TO CONVEY COLOR, PATTERN, TEXTURE AND SALIENT CHARACTERISTICS ONLY. THE LISTING OF MANUFACTURER INFORMATION IS NOT INTENDED TO LIMIT THE SELECTION OF EQUIPMENT OR MATERIALS. THE SELECTION OF PRODUCTS MEETING THESE CRITERIA WILL BE CONSIDERED AND MUST BE REVIEWED BY THE INTERIOR DESIGNER OF RECORD (IDOR) AND THE MAF/CAF INTERIOR DESIGNER AND APPROVED BY THE CONTRACTING OFFICER.
- B. THE FINISHES INDICATED ARE THE APPROVED BASIS OF DESIGN FOR THE INTERIOR LEAD LINES. IT IS THE CONTRACTORS RESPONSIBILITY TO ORDER ALL THE MATERIALS IN TIME TO AVOID DELAYS.
- C. COORDINATE THERMOSTAT LOCATIONS WITH MECHANICAL CONTRACTOR. THERMOSTATS SHALL BE LOCATED NEAR THE THERMOSTATS NEAR CORNER OF THE ROOM OR AT LIGHT SWITCHES. DO NOT INSTALL THERMOSTATS IN THE CENTER OF A WALL.
- D. SPRAY PAINT ELECTRICAL PANELS, ACCESS PANELS, AND THERMOSTATS. FINISHES SHALL MATCH SURROUNDING COLOR. PANELS PAINTED IN BRUSHES ARE NOT ACCEPTABLE.
- E. ALL FLOORING TRANSITIONS MUST MEET ABA GUIDELINES. FLOORING TRANSITIONS OCCURRING UNDER DOORS MUST BE CENTERED UNDER DOOR.
- F. ALL WALL AND CEILING FINISHES IN VERTICAL ELEVATIONS, CLASS A BAKING, AND ALL EXIST CORRIDORS MUST MEET MINIMUM REQUIREMENTS.
- G. ROOMS IDENTIFIED TO RECEIVE TILE ON WALLS MUST INCLUDE METAL TRANSITIONS ON ALL OUTSIDE AND INSIDE CORNERS AS WELL AS THE INTERSECTION BETWEEN FLOOR AND WALLS WHERE APPLICABLE FOR A COMPLETE INSTALLATION.
- H. INSTALL CORNER GUARDS (CG-1) ON ALL OUTSIDE WALLS CORNERS, INSTALL END CAPS ON ALL OPEN EDD WALLS CORNER GUARDS AND END CAPS MUST BE FULL HEIGHT TO MATCH FINISHES OF THE WALLS. TILED WALLS, OF MANUFACTURED FINISHES, SHALL BE USED.
- I. CARPETED AREAS TO RECEIVE RESILIENT COVE BASE. AREAS RECEIVING POLYURETHANOUS FLOORING TO RECEIVE INTEGRAL RESILIENT COVE BASE.
- J. FINISHED CORNER FLOORS MUST BE SEALED TO ALLOW FOR PENETRATION TO PENETRATE THROUGH FINISHED SURFACES.
- K. WALLS TO BE PAINTED (PNT-1) UNLESS OTHERWISE INDICATED. ALL GMB CEILINGS TO BE PAINTED (PNT-2). ALL HOLLOW METAL DOORS AND DOOR FRAMES TO BE PAINTED (PNT-3) UNLESS OTHERWISE INDICATED.
- L. INTERIOR WOOD DOORS TO BE FINISHED (WD-1).
- M. INTERIOR WOOD DOORS TO BE FINISHED (WD-2).
- N. ALL MATERIALS PROVIDED ARE TO BE INSTALLED PER MANUFACTURER'S INSTALLATION REQUIREMENTS.

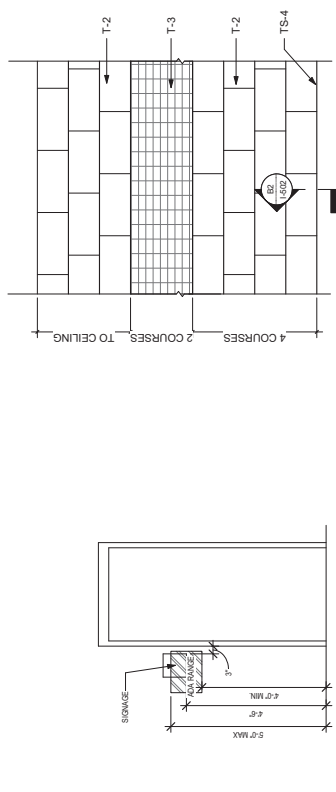




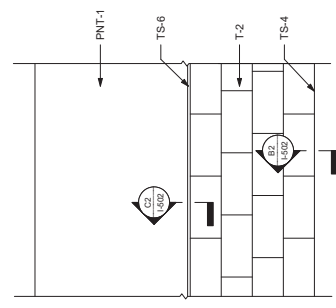
C1 ACCENT WALL ELEVATION @ SQUAD BAY ENTRY WALL



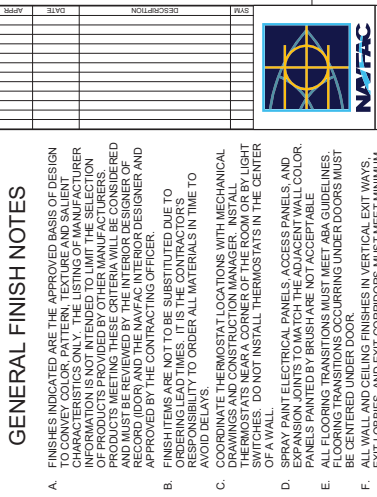
B1 ACCENT WALL ELEVATION @ SQUAD BAY BACK WALL
SCALE: 1/2" = 1'-0"



A1 TYPICAL SIGNAGE LOCATION
SCALE: 1/2" = 1'-0"



A3



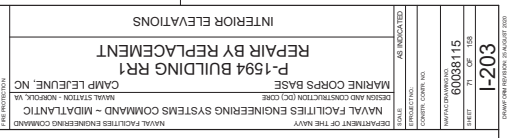
GENERAL FINISH NOTES

- F. FINISHES INDICATED ARE THE APPROVED BASIS OF DESIGN TO CONVEY COLOR, PATTERN, TEXTURE AND VALUE. CHARACTERISTICS ONLY. THE LISTING OF MANUFACTURER INFORMATION IS NOT INTENDED TO LIMIT THE SELECTION OF PRODUCTS MEETING THESE CRITERIA. WILL BE CONSIDERED AND MUST BE REVIEWED BY THE INTERIOR DESIGNER OF RECORD (IDOR) AND THE NAVAFC INTERIOR DESIGNER AND APPROVED BY THE CONTRACTING OFFICER.
- G. FINISHMENTS ARE NOT TO BE SUBSTITUTED DUE TO AVAILABILITY. THE CONTRACTOR SHALL BE RESPONSIBLE FOR RESPONSIBILITY TO ORDER ALL MATERIALS IN TIME TO AVOID DELAYS.
- H. COORDINATE THERMOSTAT LOCATIONS WITH MECHANICAL THERMISTAS AT NEARBY CORNER OF THE ROOM OR BY LIGHT SWITCHES, BUT DO NOT INSTALL THERMOSTATS IN THE CENTER OF A WALL.
- I. SPRAY PAINT ELECTRICAL PANELS, ACCESS PANELS, AND PANELS PAINTED TO FINISH ARE NOT ACCEPTABLE. COLOR, FINISH, AND TEXTURE OF ALL ELECTRICAL PANELS SHALL BE CENTERED UNDER DOOR.
- J. ALL WALL AND CEILING FINISHES IN VERTICAL EXIT WAYS, WALLS, AND EXIT CORRIDORS MUST MEET MINIMUM CLASS 1 REQUIREMENTS.
- K. ROOMS IDENTIFIED TO RECEIVE TILE ON WALLS MUST INCLUDE METAL TRANSITIONS ON ALL OUTSIDE AND INSIDE CORNERS AS WELL AS THE INTERSECTION BETWEEN FLOOR FINISHES, WHERE APPLICABLE FOR A COMPLETE INSTALLATION.
- L. INSTALL CORNER GUARDS (CG-1) ON ALL OUTSIDE CORNERS, INSTALL END CAPS ON ALL OPEN END WALLS. CORNER GUARDS AND END CAPS MUST BE FULL HEIGHT WALLS, OR MANUFACTURED STONE WALLS.
- M. CARPETED AREAS TO RECEIVE RESILIENT COVE BASE. AREAS RECEIVING EPOXY/RESINOUS FLOORING TO RECEIVE INTEGRAL RESINOUS COVE BASE.
- N. FINISH RESILIENT FLOORS MUST BE SEALED TO ALLOW FOR PENETRATION OF TRAFFIC THROUGH FINISHED SURFACE.
- O. ALL WALLS TO BE PAINTED (PNT-1) UNLESS OTHERWISE INDICATED. ALL GMB CEILINGS TO BE PAINTED (PNT-2). ALL CEILING AREAS TO BE PAINTED (PNT-3) UNLESS OTHERWISE NOTICED.
- P. INTERIOR WOOD DOORS TO BE FINISHED (WD-1).
- Q. ALL WINDOW SILLS TO BE SOLID SURFACE. (SS-2).
- R. ALL MATERIALS/PRODUCTS ARE TO BE INSTALLED PER MANUFACTURER'S INSTALLATION REQUIREMENTS.



SIGNAGE NOTES

- A. SIGNAGE TO FOLLOW GUIDELINES FROM UFC 3 120 01
- B. ALL SIGN TYPES, TEXT WORKING AND ROOM NUMBERS TO BE VERIFIED WITH END USER AND REVIEWED BY NAVFAC INTERIOR DESIGN PRIOR TO FABRICATION.
- C. SIGNS TO MOUNT TO GLASS SHALL INCLUDE AN EQUALLY SIZED BLACK SIGN PANEL ALIGNED TO OPPOSITE SIDE OF THE GLASS.
- D. SEE ELEVATION A111-203 FOR MOUNTING HEIGHT OF ACRYLIC SIGNAGE.
- E. REFER TO SHEET H301 FOR SIGNAGE DETAILS.
- F. REFER TO SHEET H401 FINISH LEGEND FOR SIGNAGE FINISHES.



GRAPHIC SCALE:

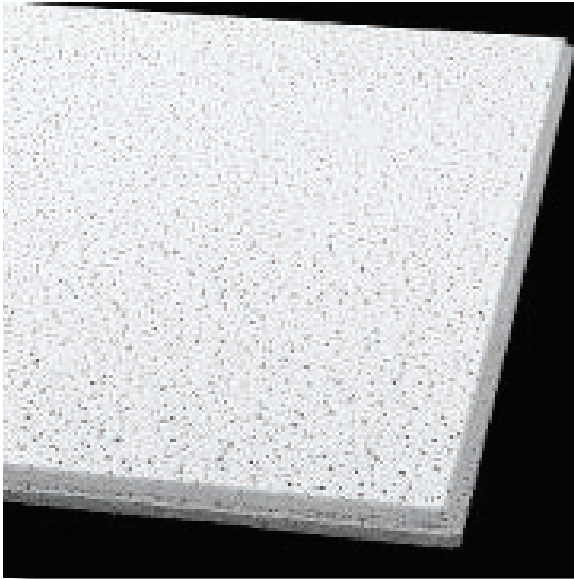


DRAFT FOR REVISION: 25 AUGUST 2020

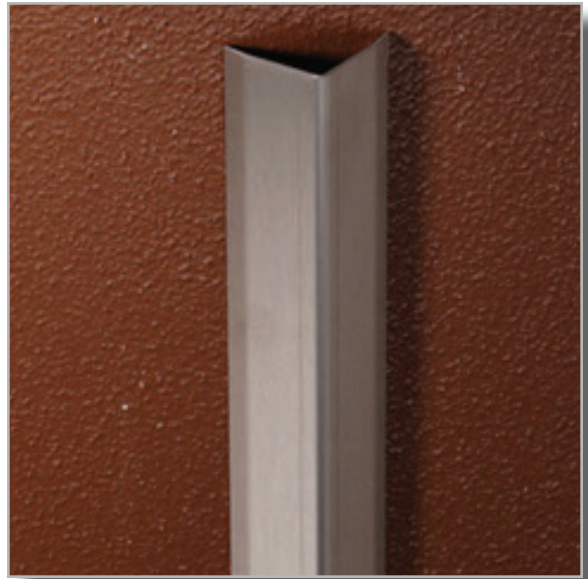
Finish Boards

P1594 Building RR1 Repair By Replacement
MCB Camp Lejeune, NC
Structural Interior Design Package

within
INTERIOR DESIGN



ACT-1
 Armstrong
 Fine Fissured 24x24 Square Lay-In, White
 *Image similar to finish



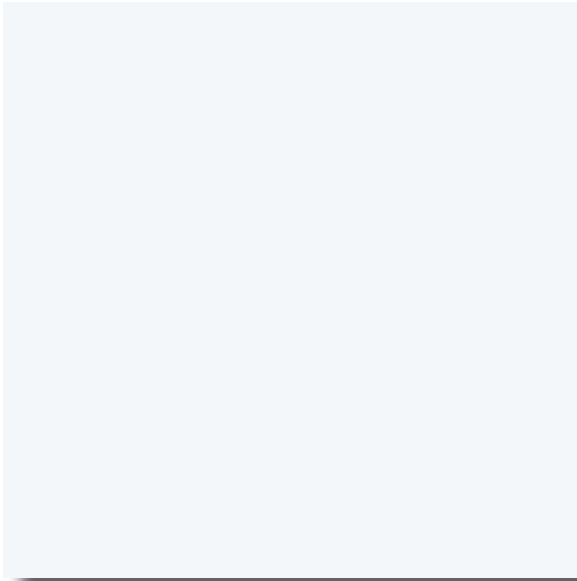
CG-1
 Inpro
 Stainless Steel Type 430 Corner Guard
 *Image similar to finish



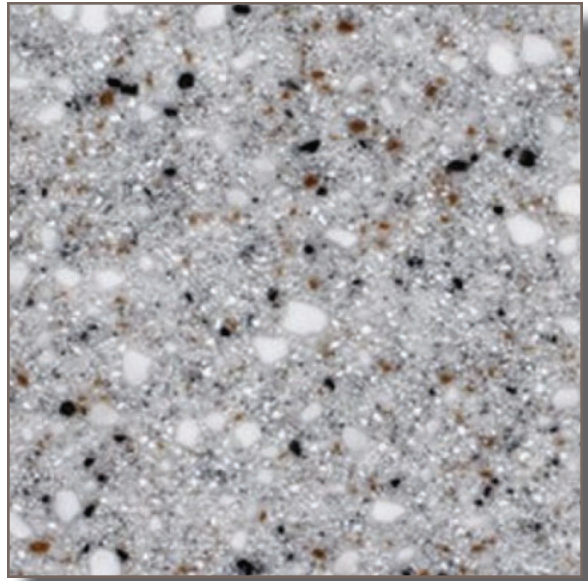
EP-1
 Stonhard
 Stonshield, Steel Gray



CPT-1
 Patcraft
 Restorative Sky 24" x 24"



SS-1
Wilsonart
Designer White



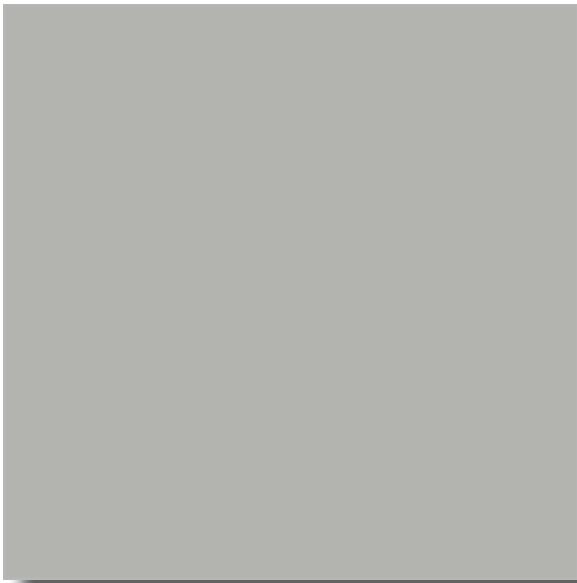
SS-2
Wilson Art
Northern Melange



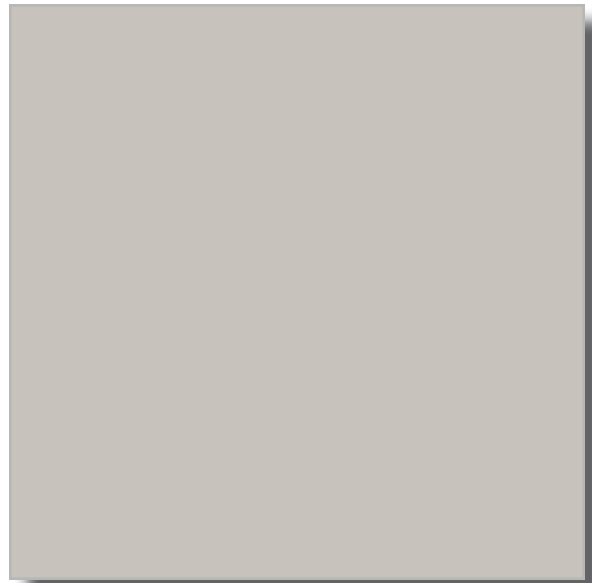
TP-1
Scranton
Charcoal Gray



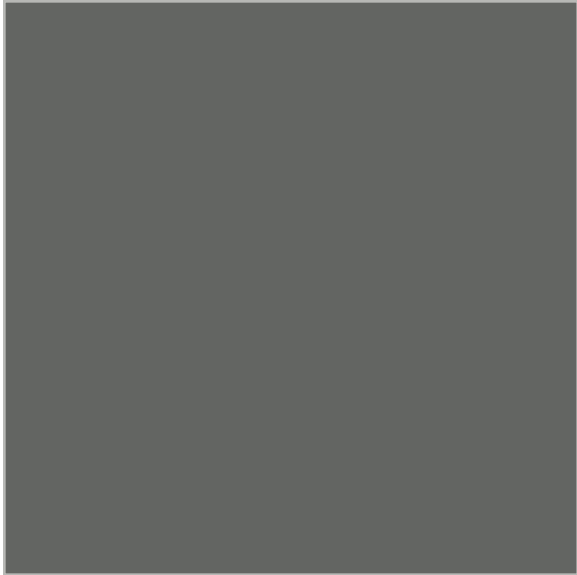
WD-1
Masonite
Clear on White Oak



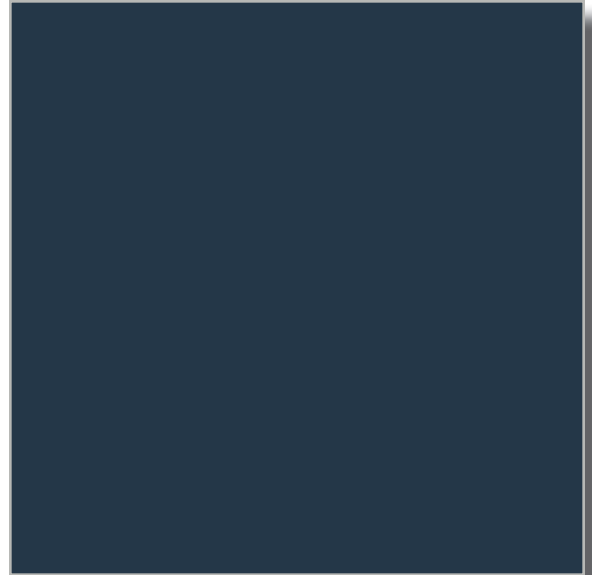
PNT-1
Sherwin Williams
SW7668 March Wind



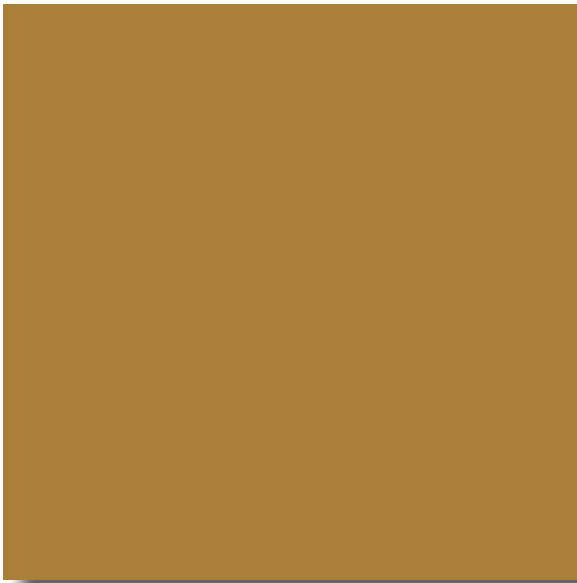
PNT-2
Sherwin Williams
SW7015 Repose Gray



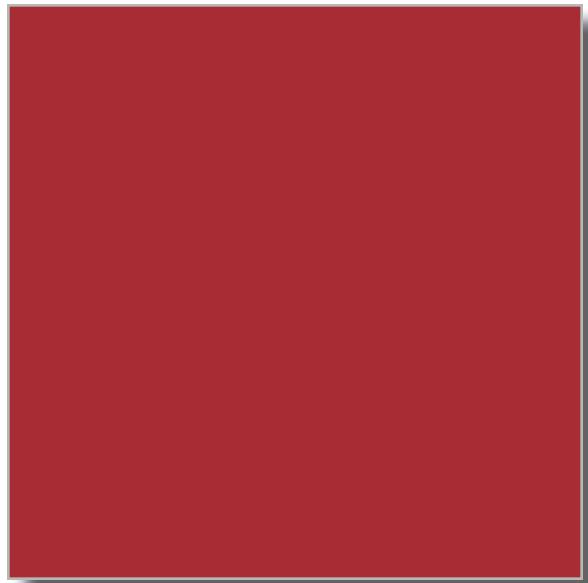
PNT-3
Sherwin Williams
SW7068 Grizzle Gray



PNT-4
Sherwin Williams
SW9178 In the Navy



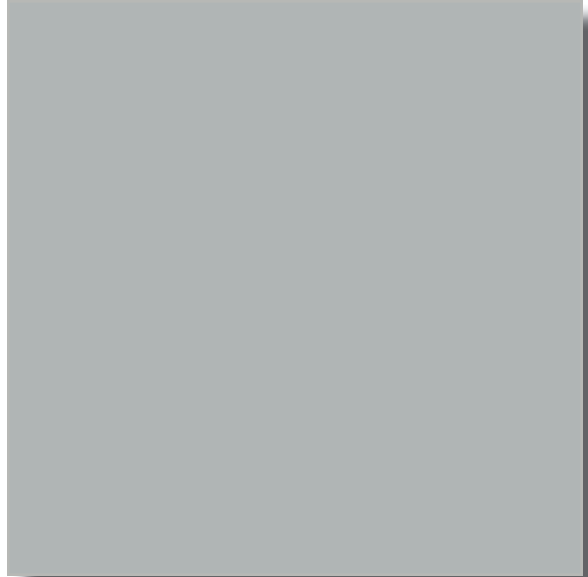
PNT-5
Sherwin Williams
SW6397 Nankeen



PNT-6
Sherwin Williams
SW6866 Heartthrob



PNT-7
Sherwin Williams
SW6811 Honorable Blue



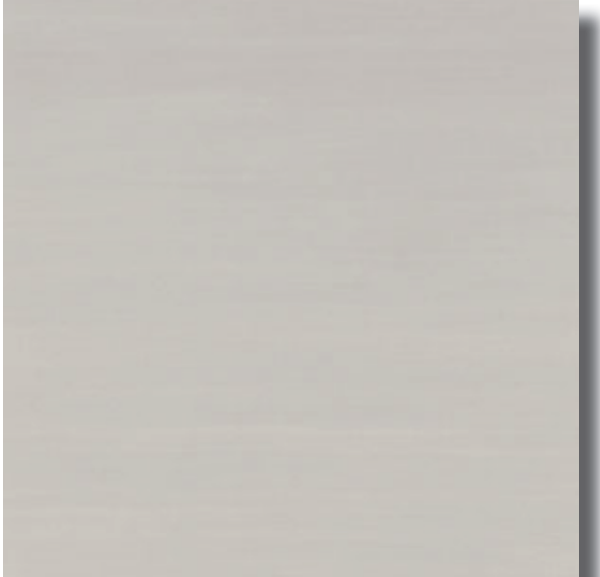
PNT-8
Sherwin Williams
SW7072 Online



T-1
Crossville
Shades 2.0, Thunder UPS



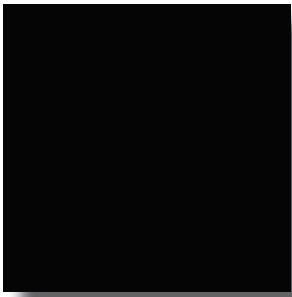
RB-1
Tarkett
Reveal Profile, Grey WG 48



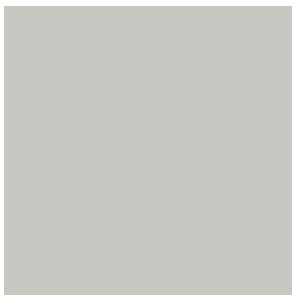
T-2
Crossville
Shades 2.0, Mist UPS



T-3
Architessa
Overlook, Blue Matte Brick



S-1
2/90 Sign Systems
Black 204



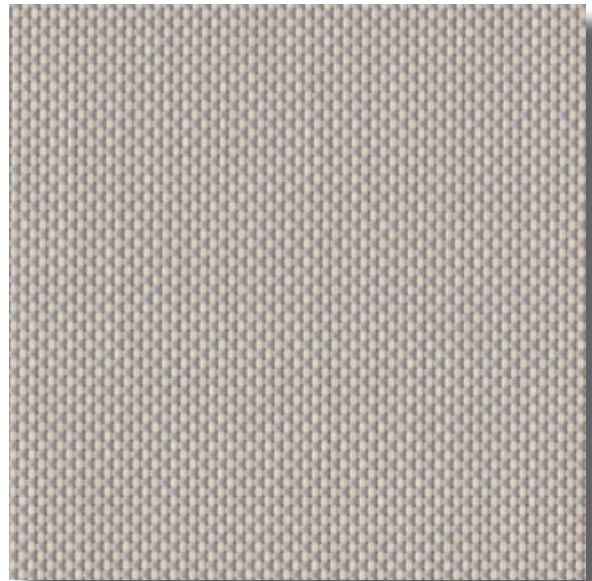
S-2
2/90 Sign Systems
Cement 709



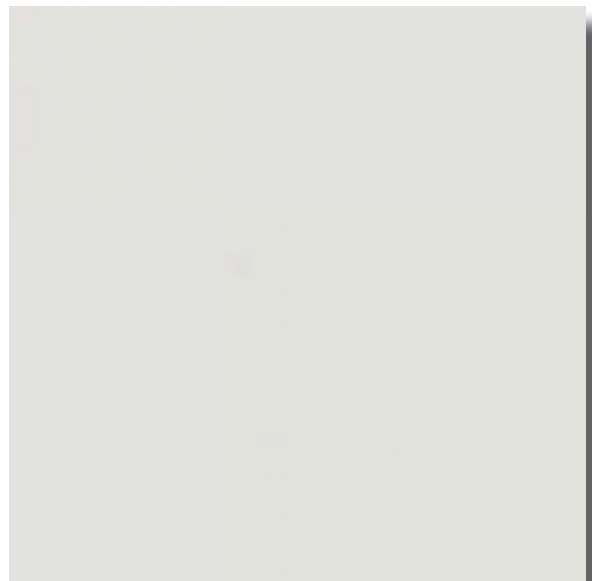
GR-1
Mapei
47 Charcoal



GR-2
Mapei
19 Pearl Gray



WS-1
Read Window Products
Jumble, Beige/Gray 5%



WS-2
Read Window Products
Definitive, White/Blackout

Basis of Design Spreadsheet

REQUEST FOR QUOTATION




PART 1: Vendor Pricing





PLEASE NOTE: Technical Performance Criteria takes precedence over the basis of design examples provided on this spreadsheet.
Project Name: P1994 Building RR1 Repair Replacement
Location: U.S. Marine Corps Base, Camp Lejeune, NC
Dealer:
GSA #: 4/20/2023
Date:
Bids must include all **BLUE** cells to be filled out. See all tabs at bottom. This spreadsheet must be submitted as a single "live" excel document. No other types of documents will be accepted.


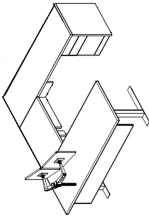
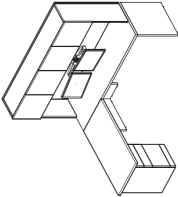

VENDOR PRICING


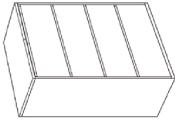
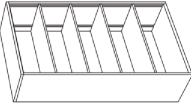

Product Total	If not FOB destination (% of product total)
Freight/Delivery	(% of product total)
Installation	(if applicable)
Additional fees	(% of product total)
Design Fee	(% of product total)
Project Mgmt Fee	(% of product total)
Total	
Storage fee	(price for 30 day increment in case of unforeseen construction delays)

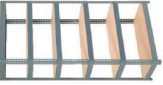
Total with Storage

ITEM	BRIEF DESCRIPTION	QTY	BASIS OF DESIGN IMAGE	MFG/MODEL	PROPOSED DESIGN IMAGE	ITEM PRICE	EXTENDED PRICE
A1	DESK WASTEBASKET Nominal Dimensions: - Overall Width: 15" - Overall Depth: 10" - Overall Height: 15" Reference Performance Criteria Enclosure V for complete list of specification requirements.	16					
A2	WALL CLOCK Nominal Dimensions: - Overall Width: 12" - Overall Depth: 1" - Overall Height: 12" Reference Performance Criteria Enclosure V for complete list of specification requirements.	14					
A5	SHOWER CURTAIN Nominal Dimensions: - Overall Width: 74" - Overall Depth: N/A - Overall Height: 71" Reference Performance Criteria Enclosure V for complete list of specification requirements.	32					

ITEM	BRIEF DESCRIPTION	QTY	BASIS OF DESIGN IMAGE	MFG/MODEL	PROPOSED DESIGN IMAGE	ITEM PRICE	EXTENDED PRICE
B1	BUNK BED Nominal Dimensions: - Overall Width: 41" - Overall Depth: 87" - Overall Height: 34-69" <i>Reference Performance Criteria Enclosure III for complete list of specification requirements.</i>	120					
B2	TWIN MATTRESS XL Nominal Dimensions: - Overall Width: 36" - Overall Depth: 80" - Overall Height: 7" <i>Reference Performance Criteria Enclosure III for complete list of specification requirements.</i>	240					
B3	TWIN BEDDING XL Nominal Dimensions: - Overall Width: 62" - Overall Depth: N/A - Overall Height: 110" <i>Reference Performance Criteria Enclosure III for complete list of specification requirements.</i>	240					
C1	TASK CHAIR Nominal Dimensions: - Overall Width: 29" - Overall Depth: 29" - Overall Height: 38-43" <i>Reference Performance Criteria Enclosure I for complete list of specification requirements.</i>	6					

ITEM	BRIEF DESCRIPTION	QTY	BASIS OF DESIGN IMAGE	MFG/MODEL	PROPOSED DESIGN IMAGE	ITEM PRICE	EXTENDED PRICE
C3	WAITING CHAIR Nominal Dimensions: - Overall Width: 22 1/4" - Overall Depth: 21 1/2" - Overall Height: 33 1/8" Reference Performance Criteria Enclosure I for complete list of specification requirements.	28					
D1	U-SHAPED DESK Nominal Dimensions: - Overall Width: 72" - Overall Depth: 96" - Overall Height: 72" - See A1/I-701 for details Reference Performance Criteria Enclosure II for complete list of specification requirements.	2					
D2	L-SHAPED DESK Nominal Dimensions: - Overall Width: 72" - Overall Depth: 78" - Overall Height: 72" - See C1/I-701 for details Reference Performance Criteria Enclosure II for complete list of specification requirements.	4					
E1	TOP LOAD WASHER Nominal Dimensions: - Overall Width: 27" - Overall Depth: 28" - Overall Height: 43" Reference Performance Criteria Enclosure IV for complete list of specification requirements.	10					

ITEM	BRIEF DESCRIPTION	QTY	BASIS OF DESIGN IMAGE	MFG/MODEL	PROPOSED DESIGN IMAGE	ITEM PRICE	EXTENDED PRICE
E2	FRONT LOAD DRYER Nominal Dimensions: - Overall Width: 27" - Overall Depth: 28" - Overall Height: 43" <i>Reference Performance Criteria Enclosure IV for complete list of specification requirements.</i>	10					
S1	4 HIGH FILE CABINET Nominal Dimensions: - Overall Width: 30" - Overall Depth: 19" - Overall Height: 52" <i>Reference Performance Criteria Enclosure II for complete list of specification requirements.</i>	4					
S2	BOOKSHELF Nominal Dimensions: - Overall Width: 30" - Overall Depth: 14 1/4" - Overall Height: 71 1/2" <i>Reference Performance Criteria Enclosure II for complete list of specification requirements.</i>	2					
S3	WARDROBE Nominal Dimensions: - Overall Width: 18" - Overall Depth: 24" - Overall Height: 72" <i>Reference Performance Criteria Enclosure III for complete list of specification requirements.</i>	240					

ITEM	BRIEF DESCRIPTION	QTY	BASIS OF DESIGN IMAGE	MFG/MODEL	PROPOSED DESIGN IMAGE	ITEM PRICE	EXTENDED PRICE
S4	<p>STORAGE SHELF</p> <p><i>Nominal Dimensions:</i></p> <ul style="list-style-type: none"> - Overall Width: 36" - Overall Depth: 18" - Overall Height: 60" <p><i>Reference Performance Criteria Enclosure III for complete list of specification requirements.</i></p>	12					

Performance Criteria

P1594 BUILDING RR1 REPAIR BY REPLACEMENT BVD ANALYSIS: PERFORMANCE CRITERIA

TABLE OF CONTENTS

ENCLOSURE I – SEATING

- A. C1 – TASK CHAIR
- B. C3 – WAITING CHAIR

ENCLOSURE II – CASEGOODS

- A. D1 – U-SHAPED DESK
- B. D2 – L-SHAPED DESK
- C. S1 – 4 HIGH FILE CABINET
- D. S2 – BOOKSHELF
- E. S3 – WARDROBE
- F. S4 – STORAGE SHELF

ENCLOSURE III – DORM QUARTERS FURNITURE

- A. B1 – BUNK BED
- B. S3 – WARDROBE
- C. B2 – TWIN MATTRESS XL
- D. B3 – TWIN BEDDING XL

ENCLOSURE IV – EQUIPMENT

- A. E1 – TOP LOAD WASHER
- B. E2 – FRONT LOAD DRYER

ENCLOSURE V – ANCILLARY ITEMS

- A. A1 – DESK WASTEBASKET
- B. A2 – WALL CLOCK
- C. A5 – SHOWER CURTAIN

PERFORMANCE CRITERIA ENCLOSURE I

SEATING

These specifications establish the minimum technical requirements for the acquisition and installation of the complete and usable items as specified below. These requirements are based on general industry standards and are intended to provide high quality seating with broad applicability for computer work, general office work, conferencing, waiting, and casual or formal meetings. All components and hardware must be provided by a single dealer/manufacturer and must be a standard commercial product as shown in the vendors current GSA price list. All proposed products must be compliant with the Buy American Act or Trade Agreement Act.

ERGONOMIC TASK CHAIR (ITEM C1)

GENERAL FEATURES

1. Multi adjustable arms
2. Mesh/plastic back, upholstered or mesh seat
3. Pneumatic height adjustment
4. Adjustable lumbar
5. Separate seat and back
6. Synchronized Tilt or 3-point pivot mechanism
7. Greenguard, SCS, or BIFMA FES certified
8. Minimum 10 year warranty on parts (labor warranty per GSA Schedule)
9. Products on GSA Schedule

TECHNICAL REQUIREMENTS

1. The chair must be a high-performance, long-term ergonomic chair that meets or exceeds all ANSI/BIFMA Standards.
2. The chair must have a fixed or ratchet-style adjustable back.
3. At workstations, chair must be offered with a 4D adjustable arm. Adjustable arms must be molded urethane with resilient surfaces that protect the arms and work surfaces.
4. The chair must have a 5-star molded engineered glass filled nylon base with hard floor and carpet caster options.
5. The chair must have a standard pneumatic height adjustment and swivel tilt control with tilt tension, swivel, and tilt tension lock.
6. The chair must have an available option for synchronized control featuring tilt control with side mounted tilt tension and multi-position tilt lock for maximum comfort.
7. Chair must sustain weight of 300 lbs.

GENERAL OVERALL SIZE REQUIREMENTS

1. Depth: 26" minimum
2. Width: 27" minimum
3. Seat Width: 17.7" minimum

ADJUSTABILITY RANGES

1. Seat Height Range: 4" minimum seat height range
2. Overall Height Range: 38"-45"
3. Arm Height: 3.5" minimum
4. Arm Length: 8" minimum
5. Seat Depth: 2" minimum

CHAIR MECHANISM

1. The task chair mechanism is to be a synchronized – tilt, 3-point pivot, or a balanced tilt style passive ergonomic type with a tension control that is easily reached by the user in a seated position.
2. Sliding seat pan or chair available in small, medium and large sizes.

PNEUMATIC SEAT HEIGHT ADJUSTMENT

1. The chair is to have a pneumatic seat height adjustment that allows a minimum of 4" for travel between 16" to 20" above finished floor.
2. An optional 7" height adjustment for travel between 15" to 22" in product offering is preferred.

SEAT DEPTH ADJUSTMENT

1. A seat depth adjustment is required with a minimum range of 2". A waterfall edge is required.

ADJUSTABLE LUMBAR SUPPORT

1. A manually adjustable lumbar is required with a minimum of 3.75" of vertical adjustment and can be reached easily from a seated position.
2. Additional offerings with independent support controls on each side of the lumbar control along with a passive pelvic support at the lower part of the mechanism is preferred.

ADJUSTABLE ARMS

1. The adjustable arms are required to be a 4-way design, which allows adjustments in/out, pivot/rotating arm caps, forward/backward, and up/down.
2. Height Adjustment: 3.5" minimum
3. Side to Side: 2" minimum
4. Front to Back: 1.5" minimum required for single size chairs. Front to back adjustment not required for multi-size chairs.
5. Rotating Arm Cap Range: minimum 10 degrees in both directions.

FINISHES

1. Task chair must be multi-use mesh back style with upholstered seat, plastic seat back, frame and arms.
2. Upholstery must be Grade 2 COM.
3. 5-star plastic base.

SUSTAINABILITY AND WARRANTY

1. The task chair must be Greenguard or SCS certified. Cradle to Cradle, SMaRT, or BIFMA Level 3 certified
2. Low VOC adhesives and or material.
3. Minimum 10-year warranty on parts (inclusive of mesh and plastic)
4. Minimum 5-year warranty on manufacturers' standard fabrics.

BOD TECHNICAL SPECIFICATIONS

- **C1 – Task Chair**

Features:

- Approximately 29"W x 29"D x 38-43"H
- Dual posture option
- 4D arms
- Bleach cleanable mesh back
- 400lb weight capacity

SIDE SEATING (ITEM C3)

TECHNICAL REQUIREMENTS

1. The chair must have two-piece construction.
2. The back must be able to flex by a torsion mechanism which can flex up to 14 degrees.
3. The frame must be made up of heavy gauge steel tube legs welded to a shell mechanism.
4. Frame must be finished in electrostatically applied powder coat paint.
5. Seat must be cushioned and upholstered and field replaceable.
6. Chair must sustain weight as indicated under BOD Technical Specifications listed below.

GENERAL OVERALL SIZE REQUIREMENTS

1. Depth: 22.75" minimum
2. Width: 23" minimum
3. Seat Width: 19" minimum
4. Height: 34.5" minimum

SUSTAINABILITY AND WARRANTY

1. Chair must be Greenguard or SCS certified.
2. Minimum 10-year warranty on parts (inclusive of mesh and plastic)
3. Minimum 5-year warranty on manufacturers' standard fabrics.

BOD TECHNICAL SPECIFICATIONS

- **C3 – Waiting Chair**
Features:
 - Approximately 22-1/4"W x 21-1/2"D x 33-1/8"H
 - Sled base
 - Upholstered seat
 - Perforated poly back
 - Armless

PERFORMANCE CRITERIA ENCLOSURE II

CASEGOODS

This specification establishes the minimum requirements for the acquisition and installation of the complete and usable suite of furniture composed of laminate and metal, supporting components, electrical hardware, communication and data cable routing, locking features, special electrical features and accessories.

Requirements and configurations must be in accordance with furniture layout and typical types shown in drawings and specified herein. If dimension variations are not mentioned after the called-out dimensions within this specification, nominal dimensions are acceptable. Components and hardware must be provided by a single manufacturer and must be standard commercial products as shown in the vendor's current GSA pricelist. Vendor must submit a single product solution for the casegoods. All products must be branded from the same manufacturer with the exception of the articulating keyboard tray, monitor arm, CPU holder, work tools, adjustable height legs and task lighting. All proposed products must be compliant with the Buy American Act or Trade Agreement Act.

DESKS (ITEM D1 & D2)

TECHNICAL REQUIREMENTS

1. All casegood items must come from one manufacturer.
2. All products must carry a lifetime warranty. Limitations or exclusions involving materials and components such as lamps, ballasts, and upholstery are acceptable.
3. Metallic or mid-Grade level of painted finishes for pricing purposes.
4. Laminate to be priced using the highest grade.
5. Greenguard, SCS, MAS Green or BIFMA FES Certified.
6. Manufacturer must have a coordinating systems furniture product that can coordinate with the desking system.
7. Non-handed.

STYLE

1. Furniture and hardware should have contemporary, transitional, and traditional design options.
2. Design must have features including a mix of laminate & metal components

CONSTRUCTION

1. Exterior must have high-pressure plastic laminate finishes (no thermofoil allowed) or powder coated metal with an epoxy finish.

WORKSURFACES

1. Main work surface to be rectangular.
2. Work surface to be laminate to match the adjacent casegood components.
3. Primary work surface to be height adjustable with ½ height modesty panel.

WIRE MANAGEMENT

1. One (1) grommet to be specified on all pieces including desks and returns.
2. Provide troughs for wire management with data and power modules as indicated on plan.

ERGONOMIC ACCESSORIES

1. Provide one (1) desk mounted dual monitor arm with vertical & horizontal arms at each station.

SUSTAINABILITY AND WARRANTY

1. Greenguard, SCS, or BIFMA FES certified
2. All products must carry a lifetime warranty. Limitations or exclusions involving materials and components such as lamps, ballasts, and upholstery are acceptable.

BOD TECHNICAL SPECIFICATIONS

- **D1 – U-Shaped Desk**

Features:

- Approximately 72"W x 96"D x 66"H Overall
- 72"W x 30"D HPL adjustable height main work surface
- 42"W x 18"D HPL bridge return
- 72"W x 24"D Rear credenza
- 13"H HPL Modesty panel mounted to main work surface
- (1) 18"W Box/Box/File Pedestal
- (1) 18"W Mobile Box/Box/File Pedestal
- (1) Grommet with wire management on each worksurface
- (1) Desk mounted task light
- (1) Desk mounted dual monitor arm
- See A1/I-701 for further details

- **D2 – L-Shaped Desk**

Features:

- Approximately 78"W x 72"D x 66"H Overall
- 78"W x 30"D HPL static height main work surface
- 48"W x 24"D HPL return
- 72"W x 15"D Overhead storage hutch w/ tackboard & task light
- (1) 18"W Box/Box/File Pedestal
- (1) 18"W Mobile Box/Box/File Pedestal
- (1) Grommet with wire management on each worksurface
- (1) Desk mounted dual monitor arm
- See C1/I-701 for further details

STORAGE (ITEMS S1 & S2)

TECHNICAL REQUIREMENTS

1. All products must come from one manufacturer or multiple manufacturers with matching finishes.
2. Laminate to be priced using the highest grade.
3. Manufacturer must have a coordinating systems furniture product that can coordinate with the desking system.

STYLE

1. Furniture and hardware should have contemporary, transitional, and traditional design options.
2. Design must have features including a mix of laminate & metal components.

CONSTRUCTION

1. Storage units must have a fully finished back to allow for use away from the wall.
2. Exterior must have high-pressure plastic laminate finishes (no thermofoil allowed) or powder coated metal with an epoxy finish.

3. Freestanding storage to be finished on all sides and be available in various heights to match each other.
4. Multiple drawer options to be available (metal, laminate, frosted glass, etc.)
5. Vertical storage to be constructed of High-Pressure Laminate and must be properly supported, counterbalanced, and secured to wall.
6. All freestanding storage to include 1 ½" levelers with a minimum of 1" adjustment.
7. All storage with doors and drawers to be lockable and keyed alike to a master key.
8. All doors and drawers must have a minimum of 4 standard pull options.

SUSTAINABILITY AND WARRANTY

1. Greenguard, SCS, or BIFMA FES certified
2. All products must carry a lifetime warranty. Limitations or exclusions involving materials and components such as lamps, ballasts, and upholstery are acceptable.

BOD TECHNICAL SPECIFICATIONS

- **S1 – 4 High File Cabinet**

Features:

- Approximately 30"W x 19"D x 52"H
- (4) Drawers with side to side hanging bars & Heavy duty steel full-extension slides
- Flush front with integral pulls
- Finished back, sides & top
- Safety interlock to prevent tipping with counterweight included
- Adjustable leveling glides
- HPL finish

- **S2 – Bookshelf**

Features:

- Approximately 30"W x 14-1/4"D x 71-1/2"H
- (4) Adjustable shelves
- Finished back, top, sides & interior
- Adjustable leveling glides
- HPL finish

INDUSTRIAL STORAGE (ITEM S4)

TECHNICAL REQUIREMENTS

1. Vertical shelving to be constructed of steel with plywood shelf surface and must be properly supported, counterbalanced, and secured to wall.
2. Shelving unit to include 1 ½" levelers with a minimum of 1" adjustment.

BOD TECHNICAL SPECIFICATIONS

- **S4 – Storage Shelf**

Features:

- Approximately 36"W x 18"D x 60"H
- Durable steel construction
- 5/8" Wood deck shelving
- 1500 lb weight capacity
- 14 auge steel uprights

PERFORMANCE CRITERIA ENCLOSURE III

DORM QUARTERS FURNITURE

This specification establishes the minimum requirements for the acquisition and installation of the complete and usable suite of metal dorm furniture composed of metal panels with wood trim, supporting components, heavy duty hardware, locking features, special electrical features and accessories.

Requirements and configurations must be in accordance with furniture layout and typical types shown in drawings and specified herein. If dimension variations are not mentioned after the called-out dimensions within this specification, nominal dimensions are acceptable. Components and hardware must be provided by a single manufacturer and must be standard commercial products as shown in the vendor's current GSA pricelist. All proposed products must be compliant with the Buy American Act or Trade Agreement Act.

METAL FURNITURE (ITEMS B1 & S3)

GENERAL REQUIREMENTS

1. Design/Aesthetics: The design shall be age appropriate for men and women within the range of 18-28 years of age.
2. Manufacturer Requirements: Dorm and Quarters manufacturers must be able to manufacture all coordinating products listed in this document. Offeror/Dealer must have in-house services including sales and installation. Offeror/Dealer must have warehousing capability.
3. Mockups: Room mockups may be required. Evaluation of the mockup will be conducted by the NAVFAC Interior Design POC, Base Property and End User, if desired. Mockups may be required to remain on site until project installations are complete.
4. All products must carry a 25 year warranty.
5. Finish samples shall be required for final approval prior to production of any orders.

CONSTRUCTION AND MATERIALS

1. All steel shall be cold rolled, oil treated, dimension stock steel of commercial grade quality conforming to international standards.
2. Low carbon steel shall be ASTM A366 standard with the highest grade carbon quality available. Weight per sheet in lbs shall be 120 lbs per 60" x 144" size sheet. Thickness should be a min of 1.2-1.5mm thick (18-16 gauge). Where 16 gauge is called for lesser grade shall not be considered equal. All square tubes shall be 16 gauge, 1.3mm thickness.
3. Internal construction should allow for easy parts replacement.
4. All welding and rivets shall be smooth to the touch and visually without dimple or indentation.
5. All welding shall be smooth to the touch and visually without dimple or indentation, which could cause visual adversity or affect the structural integrity of the tubing

STYLE

1. Style shall be appropriate for small campus like spaces.
2. All furnishings shall have simple lines and detailing that is durable and easily maintained.
3. All furnishings specified herein shall be of a design, material and workmanship to withstand heavy daily usage over an extended life with a minimum of maintenance and repair.
4. The style shall include a full range of dorm and quarters furniture pieces.

UNDERBED DRAWERS

1. Drawers to have recessed padlock hasp.
2. Pullout drawers to have 2 sets of 150 lb minimum, full extension, steel ball bearing drawer glides.
3. Drawer construction and materials, to include drawer bottoms, shall be able to withstand a load of 125% of the rated load of the drawer glides without sagging or failing.

HARDWARE

1. Bearing glides, wherever required, to be high quality steel ball bearing drawer glides with full extension and epoxy or powder coated to match finish requirements.
2. Single locking system in powder coat finish is required on lift top beds w/drawers, wardrobes and desk units. Please provide matching matte black scuff plates behind each hasp lock area where wood finish would be prone to scratching.
3. All shelf supports to be metal powder coated in powder coat, to match color of hardware package.
4. Metal powder coated hooded drawer and door pulls in powder coat is required, with a minimum of four (4) concealed screw attachment points required.
5. All handles to be steel powder coated to match hardware package with mounting hardware of heavy duty quality.
6. Levelers to be nylon based (felt covered to protect flooring), color: black or silver

FINISHES

1. All metal pieces shall have a powder coat finish with an epoxy finish that is a minimum of 1.5 mil thickness and a hardness of 3H.
2. All finishes shall be formaldehyde free and low or no VOC. Acrylated UV curable epoxy and polyester finish or water based acrylic are acceptable finishes – no catalyzed lacquer or other solvent based finishes are allowed.
3. Wood, laminate and metal finish on all furniture pieces shall coordinate where applicable. Provide scratch resistant finish coats on all furniture pieces.
4. All surface finishes shall be electro-statically applied utilizing electro-static finishing processes. All six sides on any three dimensional items shall be finished to ensure a full barrier and shall be suitable for construction grade institutional use quality.

METAL BUNKABLE BED UNIT

1. Metal Bed with 2 Lockable Drawers. Bunkable with or without bunking brackets.
2. Ladder Style Bed Ends contain min of 14 sets of pin settings to accommodate height adjustments where warranted from 0 in to 36 in height.
3. Assembly of bed accomplished with a hook or similar assembly (no tools required).
4. Ability to support at min a 38 in W x 80 in L x 9 in H mattress.
5. High Pressure Steel, thickness, 1.2 to 1.5 mm (18 to 16 gauge).
6. Bed's supporting capacity: min. 550 lbs. (combined weight person/gear).
7. Lockable Drawers shall consist of recessed locking device, Metal Drawer Fronts.
8. 2 Lockable Drawers, minimum dimensions of 24 In W x 24 In L x 6 In H.
9. Double roller-bearing drawer glides.
10. Headboard panel: double-sided high-pressure wood laminate that consists of 50 to 52 lb. particleboard core with 2 to 3 mm wood grain PVC fused edge banding to match wood laminate panels.
11. Metal, rivets, brackets, and welding points shall be powder-coated and shall be smooth to the touch and visually without dimple or indentation.

WARDROBE WITH FULL DOORS

1. 1-Door ventilated wardrobe unit with solid back panel, and side panels with ventilated holes.
2. High Pressure Steel, thickness (18 - 16 gauge), powder-coated metal with epoxy finish.
3. Front: (2) doors with diamond cut pattern ventilated holes, left and right outswing (toward user) with the maximum opening capability of 180 degrees.
4. Interior: (1-2) fixed shelves and full width clothes rod under-shelf; fixed shelves shall be flush with back interior wall.
5. (3) Chrome Hooks, (1) inside each door, (1) on back panel.
6. Three-point latching system with padlock hasp.
7. Equipped with (4) adjustable plastic nylon floor glides.
8. Metal, rivets, brackets, and welding points shall be powder-coated and shall be smooth to the touch and visually without dimple or indentation.
9. Shipped Fully Assembled.

SUSTAINABILITY AND WARRANTY

1. Greenguard, MAS Green, or SCS certification is required.
2. Finish coats should use low VOC materials.
3. Painted finishes must comply with Federal Regulation 16CRF 1303 for lead content.
4. All products must carry a 25-year warranty.
5. All finishes shall carry a minimum of a 10-year manufacturer warranty for peeling and chipping.

BOD TECHNICAL SPECIFICATIONS

- **B1 – Bunk Bed**
Features:
 - Approximately 41"W x 87"D x 34-69"H
 - Metal bunk bed
 - EZ Hook assembly
 - Underbed pull-out drawers with recessed lock
 - Solid mattress decking
- **S3 – Wardrobe**
Features:
 - Approximately 18"W x 24"D x 72"H
 - Durable steel construction
 - Includes corner gussets for added durability
 - Textured powder-coated finish
 - Perforated mesh doors
 - Box construction and double thickness doors
 - Variety of locking types available

SOFTGOOD COMPONENTS (ITEMS B2 & B3)

TECHNICAL REQUIREMENTS

1. Softgoods must be high-performance, long lasting and able to withstand extensive use.
2. Must fit Twin XL bed frame.
3. Provide two-sided Twin XL mattress with minimum 364 double, heat-tempered steel, Bonnell innerspring coils (minimum of 12.75 gauge Steel), and each coil with minimum one turn per inch.

4. Edge support with 6-gauge minimum border wire secured to the outer row of perimeter coils by helicals to protect the edges from premature breakdown.
5. Wire border must be butt-welded at ends (support seating usage).
6. All sides shall be completely enclosed with adequate padding so no sharp edges or coils can be felt through sides.
7. Smooth, dark- colored, outer-cover of breathable, soft, and comfortable polyurethane-coated nylon fabric or similar Polybrominated Diphenyl Ether (PDBE) and Polyvinyl Chloride (PVC) material and shall have inverted seams to resist raveling and zippering if stitches are broken or cut.
8. Mattress shall have a bonded, flame resistant and chemical-free insulation pad or fire retardant fiber (laminated to the outer cover) on top and bottom as a fire barrier.
9. Beneath the fire barrier, a minimum of 1.5 thick High Resilience (HR) polyurethane high density foam with an unfilled density of at least 1.5 pounds per cubic foot and minimum Indentation Load Deflection (ILD) of 30 on both sides of mattress.
10. Product must be fluid proof, hypoallergenic, bug resistant, antimicrobial, antistatic, crack resistant, and flame retardant.
11. Flame retardant chemicals shall not be used to meet FR requirements. Meet CPSC 16 CFR 1632 and 16 CFR 1633.

SUSTAINABILITY AND WARRANTY

1. Manufacturer's warranty minimum of 10 years

BOD TECHNICAL SPECIFICATIONS

- **B2 – Twin Mattress XL**

Features:

- Approximately 36"W x 80"L x 8"D
- Bacterial/fungal resistant
- 13-gauge wire inner spring
- 6-gauge border
- 7/16" foam on both sides
- CAL 117 fire resistant

- **B3 – Twin Bedding XL**

Features:

- Approximately 62"W x 110"L
- Double layer contrasting blanket
- 87% post-consumer recycled polyester & 13% virgin polyester
- Machine washable
- Fits Twin XL mattress

PERFORMANCE CRITERIA ENCLOSURE IV EQUIPMENT

This specification establishes the minimum requirements for the acquisition and installation of Equipment. Requirements and configurations must be in accordance with furniture layout shown in drawings and specified herein. If dimension variations are not mentioned after the called-out dimensions within this specification, nominal dimensions are acceptable. Components and hardware must be provided by a single manufacturer and must be standard commercial products as shown in the vendor's current GSA pricelist. All proposed products must be compliant with the Buy American Act or Trade Agreement Act.

GENERAL EQUIPMENT (ITEMS E1 & E2)

TECHNICAL REQUIREMENTS

2. Equipment must be high-performance, long lasting and able to withstand extensive use.
3. Products must be ETL listed or equal and in compliance with accepted national standards.
4. Parts must be easily replaceable.
5. Must be available through GSA.

SUSTAINABILITY AND WARRANTY

1. All equipment items must be Energy Star Certified.
2. Minimum 7-Year Warranty on all parts

BOD TECHNICAL SPECIFICATIONS

- **E1 – Top Load Washer**

Features:

- Approximately 26"W x 28"D x 43"H
- Top loading with 3.2 Cu. Ft. capacity
- Various wash/spin speed combos with 16 preset wash cycles
- (3) Wash/rinse temperatures
- Various water levels
- Energy Star Certified

- **E1 – Front Load Dryer**

Features:

- Approximately 27"W x 28"D x 43"H
- Front load dryer with reversable door hinge
- Galvanized drying cylinder
- End-of-cycle signal
- Durable exterior finish
- Energy Star Certified

PERFORMANCE CRITERIA ENCLOSURE V

ANCILLARY ITEMS

This specification establishes the minimum requirements for the acquisition and installation of Ancillary Items. Requirements and configurations must be in accordance with furniture layout shown in drawings and specified herein. If dimension variations are not mentioned after the called-out dimensions within this specification, nominal dimensions are acceptable. Components must be standard commercial products as shown in the vendor's current GSA pricelist. All proposed products must be compliant with the Buy American Act or Trade Agreement Act.

ANCILLARY FURNISHINGS (ITEMS A1, A2 & A5)

TECHNICAL REQUIREMENTS

1. Items must be high-performance, long lasting and able to withstand extensive use.
2. Must be available through GSA.

WARRANTY

1. Minimum 3-year Warranty

BOD TECHNICAL SPECIFICATIONS

- **A1 – Waste Can**

Features:

- Approximately 15"W x 10"D x 15"H
- 28 qt. volume
- Resists chipping and denting
- Rolled rim adds strength and holds up liners
- Complies with UL, CSFM

- **A2 – Wall Clock**

Features:

- 12" Overall Diameter
- White face with black numerals
- Glass face cover
- Aluminum finish bezel
- Quartz battery movement
- Batteries included

- **A5 – Shower Curtain**


Features:

- Approximately 74"W x 71"L
- Hookless curtain with grommets
- Made of 100% polyester
- Snap-on liner with viewing window above the shoulder
- 100% waterproof w/ ultrasonic hem
- Stitch-free allowing water to run off easily reducing mildew

Procurement Sheets

P1594 Building RR1 Repair By Replacement
MCB Camp Lejeune, NC
Furniture Fixtures & Equipment Package

within
INTERIOR DESIGN

NAVAL FACILITIES ENGINEERING COMMAND MIDLANT		DATE:																																	
PROJECT: P1594 Building RR1 Repair By Replacement		4/20/2023																																	
BASE/CITY/STATE: U.S. Marine Corps Base, Camp Lejeune, NC																																			
BPA CONTRACT #: TBD		ITEM NO:																																	
EXPIRATION DATE: TBD		A1																																	
ITEM: DESK WASTEBASKET																																			
MANUFACTURER: Alle																																			
MANUFACTURER ADDRESS: Alle P.O. Box 961 Amherst, NY 14226 (716) 446-5538		ORDERING ADDRESS: TBD																																	
ANY VARIANCE OR MODIFICATION OF THIS SPECIFICATION WILL BE COORDINATED THROUGH NAVFAC WASHINGTON																																			
NAVFAC ID CONTACT: Peggy Noland, NAVFAC LANT																																			
PROJECT ID CONTACT: Within Interior Design																																			
DESCRIPTION: MFG: Alle Model #: 8128 Dimensions: 14-1/2"W x 10-1/2"D x 15-1/4"H Finishes: Black Technical Specifications: - 28 qt volume. - Resists chipping and denting - Rolled rim adds strength & holds up liners - Complies with UL, CSFM		<table border="1" style="width: 100%; border-collapse: collapse;"> <tr> <td style="background-color: #f2f2f2;">QUANTITY</td> </tr> <tr> <td>16</td> </tr> <tr> <td style="background-color: #f2f2f2;">UNIT PRICE</td> </tr> <tr> <td>\$30.00</td> </tr> <tr> <td style="background-color: #f2f2f2;">EXTENDED PRICE</td> </tr> <tr> <td>\$480.00</td> </tr> </table>		QUANTITY	16	UNIT PRICE	\$30.00	EXTENDED PRICE	\$480.00																										
QUANTITY																																			
16																																			
UNIT PRICE																																			
\$30.00																																			
EXTENDED PRICE																																			
\$480.00																																			
Disclaimer: Model numbers provided by the dealer as specified on their BOM.																																			
ROOM LOCATIONS: <table border="1" style="width: 100%; border-collapse: collapse; margin-top: 10px;"> <thead> <tr> <th style="text-align: left;">QTY</th> <th style="text-align: left;">ROOM NUMBER</th> <th style="text-align: left;">QTY</th> <th style="text-align: left;">ROOM NUMBER</th> </tr> </thead> <tbody> <tr> <td>2</td> <td>104 - OFFICE</td> <td>1</td> <td>130 - OFFICE</td> </tr> <tr> <td>1</td> <td>109 - SQUAD BAY</td> <td>2</td> <td>203 - OFFICE</td> </tr> <tr> <td>1</td> <td>112 - SQUAD BAY</td> <td>1</td> <td>207 - SQUAD BAY</td> </tr> <tr> <td>1</td> <td>125 - SQUAD BAY</td> <td>1</td> <td>209 - SQUAD BAY</td> </tr> <tr> <td>1</td> <td>127 - SQUAD BAY</td> <td>1</td> <td>216 - SQUAD BAY</td> </tr> <tr> <td>1</td> <td>128 - WAITING</td> <td>1</td> <td>222 - SQUAD BAY</td> </tr> <tr> <td>1</td> <td>129 - OFFICE</td> <td>1</td> <td>224 - SQUAD BAY</td> </tr> </tbody> </table>				QTY	ROOM NUMBER	QTY	ROOM NUMBER	2	104 - OFFICE	1	130 - OFFICE	1	109 - SQUAD BAY	2	203 - OFFICE	1	112 - SQUAD BAY	1	207 - SQUAD BAY	1	125 - SQUAD BAY	1	209 - SQUAD BAY	1	127 - SQUAD BAY	1	216 - SQUAD BAY	1	128 - WAITING	1	222 - SQUAD BAY	1	129 - OFFICE	1	224 - SQUAD BAY
QTY	ROOM NUMBER	QTY	ROOM NUMBER																																
2	104 - OFFICE	1	130 - OFFICE																																
1	109 - SQUAD BAY	2	203 - OFFICE																																
1	112 - SQUAD BAY	1	207 - SQUAD BAY																																
1	125 - SQUAD BAY	1	209 - SQUAD BAY																																
1	127 - SQUAD BAY	1	216 - SQUAD BAY																																
1	128 - WAITING	1	222 - SQUAD BAY																																
1	129 - OFFICE	1	224 - SQUAD BAY																																
ITEM PHOTO/FINISH SAMPLES <div style="text-align: center;">  </div>																																			

NAVAL FACILITIES ENGINEERING COMMAND MIDLANT
DATE:
PROJECT: P1594 Building RR1 Repair By Replacement

4/20/2023
BASE/CITY/STATE: U.S. Marine Corps Base, Camp Lejeune, NC

BPA CONTRACT #: TBD

EXPIRATION DATE: TBD

ITEM NO:
ITEM: **WALL CLOCK**
A2
MANUFACTURER:

Peter Pepper

MANUFACTURER ADDRESS:

Peter Pepper

17929 So. Susanna Rd PO BOX 576

Compton, CA 90224

(800) 496-0204

ORDERING ADDRESS:

TBD

ANY VARIANCE OR MODIFICATION OF THIS SPECIFICATION WILL BE COORDINATED THROUGH NAVFAC
NAVFAC ID CONTACT: Peggy Noland, NAVFAC LANT

PROJECT ID CONTACT: Within Interior Design

DESCRIPTION:
MFG: Peter Pepper

Model #: 343

Dimensions: 11-3/4" Diameter

Finishes: Aluminum

Technical Specifications:

- Quartz battery movement
- White face with black graphics
- Glass face cover
- Aluminum finish bezel
- Includes batteries

QUANTITY

14

UNIT PRICE

\$260.00

EXTENDED PRICE

\$3,640.00

Disclaimer: Model numbers provided by the dealer as specified on their BOM.

ROOM LOCATIONS:

QTY	ROOM NUMBER
1	104 - OFFICE
1	109 - SQUAD BAY
1	112 - SQUAD BAY
1	125 - SQUAD BAY
1	127 - SQUAD BAY
1	128 - WAITING
1	129 - OFFICE

QTY	ROOM NUMBER
1	130 - OFFICE
1	203 - OFFICE
1	207 - SQUAD BAY
1	209 - SQUAD BAY
1	216 - SQUAD BAY
1	222 - SQUAD BAY
1	224 - SQUAD BAY

ITEM PHOTO/FINISH SAMPLES


NAVAL FACILITIES ENGINEERING COMMAND MIDLANT
DATE:
PROJECT: P1594 Building RR1 Repair By Replacement

4/20/2023
BASE/CITY/STATE: U.S. Marine Corps Base, Camp Lejeune, NC

BPA CONTRACT #: TBD

EXPIRATION DATE: TBD

ITEM NO:
ITEM: **SHOWER CURTAIN**
A5
MANUFACTURER:

Construction Specialties

MANUFACTURER ADDRESS:

Construction Specialties

3 Werner Way Suite 100

Lebanon, NJ 08833

(800) 972-7214

ORDERING ADDRESS:

TBD

ANY VARIANCE OR MODIFICATION OF THIS SPECIFICATION WILL BE COORDINATED THROUGH NAVFAC
NAVFAC ID CONTACT: Peggy Noland, NAVFAC LANT

PROJECT ID CONTACT: Within Interior Design

DESCRIPTION:
MFG: Construction Specialties

Model #: Hookless

Dimensions: 74"W x 71"H

Finishes: Litchfield

Technical Specifications:

- 24 gallon painted steel waste receptacle with adjustable glides
- Step mechanism with soft close lid
- Internal 16 gallon capacity liner with bag ring
- Black label waste icon

QUANTITY

32

UNIT PRICE

\$50.00

EXTENDED PRICE

\$1,600.00

Disclaimer: Model numbers provided by the dealer as specified on their BOM.

ROOM LOCATIONS:
QTY **ROOM NUMBER**

8 115 - SHOWER

8 123 - SHOWER

8 212 - SHOWER

8 220 - SHOWER

ITEM PHOTO/FINISH SAMPLES

Litchfield*


NAVAL FACILITIES ENGINEERING COMMAND MIDLANT
DATE:
PROJECT: P1594 Building RR1 Repair By Replacement

4/20/2023
BASE/CITY/STATE: U.S. Marine Corps Base, Camp Lejeune, NC

BPA CONTRACT #: TBD

EXPIRATION DATE: TBD

ITEM NO:
ITEM: **BUNK BED**
B1
MANUFACTURER:

University Loft Co.

MANUFACTURER ADDRESS:

 University Loft Co.
 2588 Jannetides Blvd.
 Greenfield, IN 46140
 (800) 423-5638

ORDERING ADDRESS:

TBD

ANY VARIANCE OR MODIFICATION OF THIS SPECIFICATION WILL BE COORDINATED THROUGH NAVFAC
NAVFAC ID CONTACT: Peggy Noland, NAVFAC LANT

PROJECT ID CONTACT: Within Interior Design

DESCRIPTION:	QUANTITY
MFG: University Loft Co. Model #: G85278 Metal Storage Bed Dimensions: 38 5/32"W x 83 1/2"D x 69"H Finishes: Jute	120
Technical Specifications: - Metal bunk bed with bunking brackets - EZ Hook assembly - Underbed drawers - Ladder style bed ends - Solid mattress decking	UNIT PRICE \$2,098.00
Disclaimer: Model numbers provided by the dealer as specified on their BOM.	EXTENDED PRICE \$251,760.00

ROOM LOCATIONS:

QTY	ROOM NUMBER	QTY	ROOM NUMBER
14	109 - SQUAD BAY	14	207 - SQUAD BAY
11	112 - SQUAD BAY	15	209 - SQUAD BAY
15	125 - SQUAD BAY	8	216 - SQUAD BAY
14	127 - SQUAD BAY	15	222 - SQUAD BAY
		14	224 - SQUAD BAY

ITEM PHOTO/FINISH SAMPLES


JUTE



NAVAL FACILITIES ENGINEERING COMMAND MIDLANT
DATE:
PROJECT: P1594 Building RR1 Repair By Replacement

4/20/2023
BASE/CITY/STATE: U.S. Marine Corps Base, Camp Lejeune, NC

BPA CONTRACT #: TBD

EXPIRATION DATE: TBD

ITEM NO:
ITEM: **TWIN MATTRESS XL**
B2
MANUFACTURER:

University Loft Co.

MANUFACTURER ADDRESS:

 University Loft Co.
 2588 Jannetides Blvd.
 Greenfield, IN 46140
 (800) 423-5638

ORDERING ADDRESS:

TBD

ANY VARIANCE OR MODIFICATION OF THIS SPECIFICATION WILL BE COORDINATED THROUGH NAVFAC
NAVFAC ID CONTACT: Peggy Noland, NAVFAC LANT

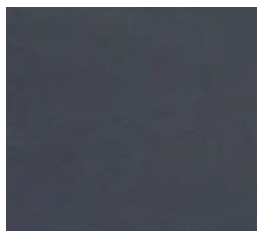
PROJECT ID CONTACT: Within Interior Design

DESCRIPTION:	QUANTITY
MFG: University Loft Co. Model #: Standard Mattress Dimensions: 36"W x 80"D Finishes: Navy	240
Technical Specifications: - Bacterial/fungal resistant - 13 gauge wire inner spring - 6 gauge boarder - 7/16" foam on both sides - CAL 117 fire resistant	UNIT PRICE
	\$200.00 EXTENDED PRICE \$48,000.00

Disclaimer: Model numbers provided by the dealer as specified on their BOM.


ROOM LOCATIONS:

QTY	ROOM NUMBER	QTY	ROOM NUMBER
28	109 - SQUAD BAY	28	207 - SQUAD BAY
22	112 - SQUAD BAY	30	209 - SQUAD BAY
30	125 - SQUAD BAY	16	216 - SQUAD BAY
28	127 - SQUAD BAY	30	222 - SQUAD BAY
		28	224 - SQUAD BAY

ITEM PHOTO/FINISH SAMPLES


NAVY



NAVAL FACILITIES ENGINEERING COMMAND MIDLANT		DATE:																																																													
PROJECT: P1594 Building RR1 Repair By Replacement		4/20/2023																																																													
<table style="width: 100%; border: none;"> <tr> <td style="width: 30%;">BASE/CITY/STATE:</td> <td colspan="3">U.S. Marine Corps Base, Camp Lejeune, NC</td> </tr> <tr> <td>BPA CONTRACT #:</td> <td colspan="3">TBD</td> </tr> <tr> <td>EXPIRATION DATE:</td> <td colspan="3">TBD</td> </tr> <tr> <td>ITEM:</td> <td style="text-align: center;">TWIN BEDDING XL</td> <td style="width: 10%;"></td> <td style="text-align: right;">ITEM NO:</td> </tr> <tr> <td></td> <td></td> <td></td> <td style="text-align: right;">B3</td> </tr> <tr> <td colspan="4">MANUFACTURER:</td> </tr> <tr> <td colspan="4">Valley Forge Fabrics</td> </tr> <tr> <td colspan="2">MANUFACTURER ADDRESS:</td> <td colspan="2">ORDERING ADDRESS:</td> </tr> <tr> <td colspan="2">Valley Forge Fabrics</td> <td colspan="2">TBD</td> </tr> <tr> <td colspan="2">1650 W McNab Rd</td> <td colspan="2"></td> </tr> <tr> <td colspan="2">Fort Lauderdale, FL 33309</td> <td colspan="2"></td> </tr> <tr> <td colspan="2">(954) 971-1776</td> <td colspan="2"></td> </tr> <tr> <td colspan="4">ANY VARIANCE OR MODIFICATION OF THIS SPECIFICATION WILL BE COORDINATED THROUGH NAVFAC</td> </tr> <tr> <td colspan="2">NAVFAC ID CONTACT:</td> <td colspan="2">Peggy Noland, NAVFAC LANT</td> </tr> <tr> <td colspan="2">PROJECT ID CONTACT:</td> <td colspan="2">Within Interior Design</td> </tr> </table>				BASE/CITY/STATE:	U.S. Marine Corps Base, Camp Lejeune, NC			BPA CONTRACT #:	TBD			EXPIRATION DATE:	TBD			ITEM:	TWIN BEDDING XL		ITEM NO:				B3	MANUFACTURER:				Valley Forge Fabrics				MANUFACTURER ADDRESS:		ORDERING ADDRESS:		Valley Forge Fabrics		TBD		1650 W McNab Rd				Fort Lauderdale, FL 33309				(954) 971-1776				ANY VARIANCE OR MODIFICATION OF THIS SPECIFICATION WILL BE COORDINATED THROUGH NAVFAC				NAVFAC ID CONTACT:		Peggy Noland, NAVFAC LANT		PROJECT ID CONTACT:		Within Interior Design	
BASE/CITY/STATE:	U.S. Marine Corps Base, Camp Lejeune, NC																																																														
BPA CONTRACT #:	TBD																																																														
EXPIRATION DATE:	TBD																																																														
ITEM:	TWIN BEDDING XL		ITEM NO:																																																												
			B3																																																												
MANUFACTURER:																																																															
Valley Forge Fabrics																																																															
MANUFACTURER ADDRESS:		ORDERING ADDRESS:																																																													
Valley Forge Fabrics		TBD																																																													
1650 W McNab Rd																																																															
Fort Lauderdale, FL 33309																																																															
(954) 971-1776																																																															
ANY VARIANCE OR MODIFICATION OF THIS SPECIFICATION WILL BE COORDINATED THROUGH NAVFAC																																																															
NAVFAC ID CONTACT:		Peggy Noland, NAVFAC LANT																																																													
PROJECT ID CONTACT:		Within Interior Design																																																													
DESCRIPTION: <table style="width: 100%; border: none;"> <tr> <td style="width: 15%;">MFG:</td> <td>Valley Forge Fabrics</td> </tr> <tr> <td>Model #:</td> <td>BIB-FXL-9FB</td> </tr> <tr> <td>Dimensions:</td> <td>62"W x 110"D</td> </tr> <tr> <td>Finishes:</td> <td>Gun Metal/Tea Chest</td> </tr> </table> Technical Specifications: - Double layer contrasting blanket - 87% post-consumer recycled polyester & 13% virgin polyester - Machine Washable - Fits a twin XL mattress		MFG:	Valley Forge Fabrics	Model #:	BIB-FXL-9FB	Dimensions:	62"W x 110"D	Finishes:	Gun Metal/Tea Chest	<table border="1" style="width: 100%; border-collapse: collapse;"> <tr> <td style="padding: 5px;">QUANTITY</td> </tr> <tr> <td style="padding: 10px;">240</td> </tr> <tr> <td style="padding: 5px;">UNIT PRICE</td> </tr> <tr> <td style="padding: 10px;">\$250.00</td> </tr> <tr> <td style="padding: 5px;">EXTENDED PRICE</td> </tr> <tr> <td style="padding: 10px;">\$60,000.00</td> </tr> </table>		QUANTITY	240	UNIT PRICE	\$250.00	EXTENDED PRICE	\$60,000.00																																														
MFG:	Valley Forge Fabrics																																																														
Model #:	BIB-FXL-9FB																																																														
Dimensions:	62"W x 110"D																																																														
Finishes:	Gun Metal/Tea Chest																																																														
QUANTITY																																																															
240																																																															
UNIT PRICE																																																															
\$250.00																																																															
EXTENDED PRICE																																																															
\$60,000.00																																																															
Disclaimer: Model numbers provided by the dealer as specified on their BOM.																																																															
ROOM LOCATIONS: <table style="width: 100%; border: none;"> <tr> <td style="width: 10%;">QTY</td> <td style="width: 40%;">ROOM NUMBER</td> <td style="width: 10%;">QTY</td> <td style="width: 40%;">ROOM NUMBER</td> </tr> <tr> <td>28</td> <td>109 - SQUAD BAY</td> <td>28</td> <td>207 - SQUAD BAY</td> </tr> <tr> <td>22</td> <td>112 - SQUAD BAY</td> <td>30</td> <td>209 - SQUAD BAY</td> </tr> <tr> <td>30</td> <td>125 - SQUAD BAY</td> <td>16</td> <td>216 - SQUAD BAY</td> </tr> <tr> <td>28</td> <td>127 - SQUAD BAY</td> <td>30</td> <td>222 - SQUAD BAY</td> </tr> <tr> <td></td> <td></td> <td>28</td> <td>224 - SQUAD BAY</td> </tr> </table>				QTY	ROOM NUMBER	QTY	ROOM NUMBER	28	109 - SQUAD BAY	28	207 - SQUAD BAY	22	112 - SQUAD BAY	30	209 - SQUAD BAY	30	125 - SQUAD BAY	16	216 - SQUAD BAY	28	127 - SQUAD BAY	30	222 - SQUAD BAY			28	224 - SQUAD BAY																																				
QTY	ROOM NUMBER	QTY	ROOM NUMBER																																																												
28	109 - SQUAD BAY	28	207 - SQUAD BAY																																																												
22	112 - SQUAD BAY	30	209 - SQUAD BAY																																																												
30	125 - SQUAD BAY	16	216 - SQUAD BAY																																																												
28	127 - SQUAD BAY	30	222 - SQUAD BAY																																																												
		28	224 - SQUAD BAY																																																												
ITEM PHOTO/FINISH SAMPLES <div style="text-align: center;">  </div>																																																															

NAVAL FACILITIES ENGINEERING COMMAND MIDLANT
DATE:
PROJECT: P1594 Building RR1 Repair By Replacement

4/20/2023
BASE/CITY/STATE: U.S. Marine Corps Base, Camp Lejeune, NC

BPA CONTRACT #: TBD

EXPIRATION DATE: TBD

ITEM NO:
ITEM: **TASK CHAIR**
C1
MANUFACTURER:

Haworth

MANUFACTURER ADDRESS:

Haworth

One Haworth Center

Holland, MI 49423

(616) 393-3000

ORDERING ADDRESS:

TBD

ANY VARIANCE OR MODIFICATION OF THIS SPECIFICATION WILL BE COORDINATED THROUGH NAVFAC
NAVFAC ID CONTACT: Peggy Noland, NAVFAC LANT

PROJECT ID CONTACT: Within Interior Design

DESCRIPTION:
MFG: Haworth

Model #: Zody II

Dimensions: 29"W x 29"D x 38-43"H

Finishes: Upholstery: Wellington, Black
Knit Back: Zody Knit, Rosewood
Base: Metallic Silver
Trim: Fog

Technical Specifications:

- Dual posture option
- 4D arms
- Bleach cleanable mesh back
- 400lb weight capacity
- BIFMA Level 3
- 12 year 24/7-365 warranty

Disclaimer: Model numbers provided by the dealer as specified on their BOM.

QUANTITY

6

UNIT PRICE

\$750.00

EXTENDED PRICE

\$4,500.00

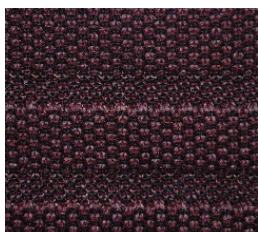
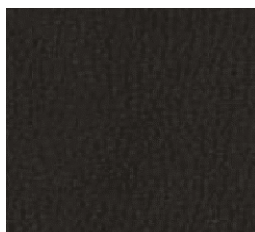
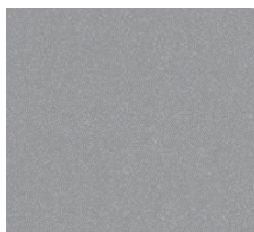
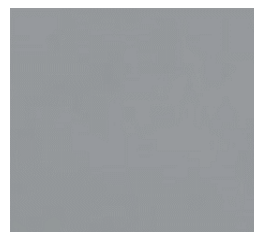
ROOM LOCATIONS:
QTY **ROOM NUMBER**

2 104 - OFFICE

1 129 - OFFICE

1 130 - OFFICE

2 203 - OFFICE

ITEM PHOTO/FINISH SAMPLES

KNIT

UPHOLSTERY

BASE

TRIM


NAVAL FACILITIES ENGINEERING COMMAND MIDLANT
DATE:
PROJECT: P1594 Building RR1 Repair By Replacement

4/20/2023
BASE/CITY/STATE: U.S. Marine Corps Base, Camp Lejeune, NC

BPA CONTRACT #: TBD

EXPIRATION DATE: TBD

ITEM NO:
ITEM: **WAITING CHAIR**
C3
MANUFACTURER:

National Office Furniture

MANUFACTURER ADDRESS:

National Office Furniture

1600 Royal Street

Jasper, IN 47546

(800) 482-1717

ORDERING ADDRESS:

TBD

ANY VARIANCE OR MODIFICATION OF THIS SPECIFICATION WILL BE COORDINATED THROUGH NAVFAC
NAVFAC ID CONTACT: Peggy Noland, NAVFAC LANT

PROJECT ID CONTACT: Within Interior Design

DESCRIPTION:	QUANTITY
MFG: National Office Furniture Model #: Ditto Dimensions: 22-1/4"W x 21-1/2"D x 33 1/8"H Finishes: Upholstery: Silica Etch/Slate Plastic: Black Technical Specifications: - Upholstered back - Plastic perforated back - BIFMA certified - Sled base - Armless - 12 year warranty	28
	UNIT PRICE
	\$450.00
	EXTENDED PRICE
	\$12,600.00

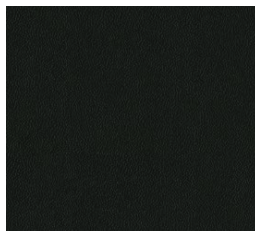
Disclaimer: Model numbers provided by the dealer as specified on their BOM.

ROOM LOCATIONS:

QTY	ROOM NUMBER
20	128 - WAITING
2	104 - OFFICE
2	129 - OFFICE
2	130 - OFFICE
2	203 - OFFICE

ITEM PHOTO/FINISH SAMPLES


UPHOLSTERY



PLASTIC



NAVAL FACILITIES ENGINEERING COMMAND MIDLANT
DATE:
PROJECT: P1594 Building RR1 Repair By Replacement

4/20/2023
BASE/CITY/STATE: U.S. Marine Corps Base, Camp Lejeune, NC

BPA CONTRACT #: TBD

EXPIRATION DATE: TBD

ITEM NO:
ITEM: **U-SHAPED DESK**
D1
MANUFACTURER:

Haworth

MANUFACTURER ADDRESS:

Haworth

One Haworth Center

Holland, MI 49423

(616) 393-3000

ORDERING ADDRESS:

TBD

ANY VARIANCE OR MODIFICATION OF THIS SPECIFICATION WILL BE COORDINATED THROUGH NAVFAC
NAVFAC ID CONTACT: Peggy Noland, NAVFAC LANT

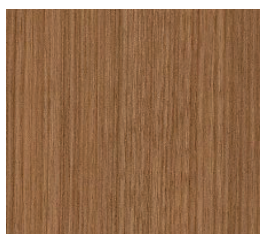
PROJECT ID CONTACT: Within Interior Design

DESCRIPTION:	QUANTITY
MFG: Haworth Model #: X-Series Dimensions: 72"W x 96"D x 72"H Finishes: Tackboard: Chevron Meander Laminate: Neo Walnut Trim: Metallic Silver	2
Technical Specifications: - Steel core structure with box-in-box construction - Storage has full-extension steel ball bearing drawer slides - High-pressure laminate worksurfaces with steel modesty panels - Modesty panels include cable management - See A1/I-701 for further details	UNIT PRICE \$3,300.00
	EXTENDED PRICE \$6,600.00

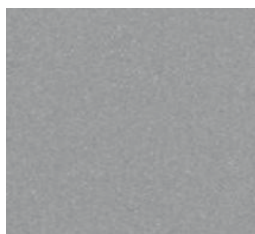
Disclaimer: Model numbers provided by the dealer as specified on their BOM.

ROOM LOCATIONS:

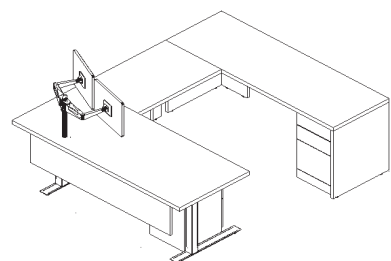
QTY	ROOM NUMBER
1	129 - OFFICE
1	130 - OFFICE

ITEM PHOTO/FINISH SAMPLES


LAMINATE



TRIM



NAVAL FACILITIES ENGINEERING COMMAND MIDLANT
DATE:
PROJECT: P1594 Building RR1 Repair By Replacement

4/20/2023
BASE/CITY/STATE: U.S. Marine Corps Base, Camp Lejeune, NC

BPA CONTRACT #: TBD

EXPIRATION DATE: TBD

ITEM NO:
ITEM: **L-SHAPED DESK**
D2
MANUFACTURER:

Haworth

MANUFACTURER ADDRESS:

Haworth

One Haworth Center

Holland, MI 49423

(616) 393-3000

ORDERING ADDRESS:

TBD

ANY VARIANCE OR MODIFICATION OF THIS SPECIFICATION WILL BE COORDINATED THROUGH NAVFAC
NAVFAC ID CONTACT: Peggy Noland, NAVFAC LANT

PROJECT ID CONTACT: Within Interior Design

DESCRIPTION:
MFG: Haworth

Model #: X-Series

Dimensions: 72"W x 78"D x 72"H

Finishes: Tackboard: Chevron Meander

Laminate: Neo Walnut

Trim: Metallic Silver

Technical Specifications:

- Steel core structure with box-in-box construction
- Storage has full-extension steel ball bearing drawer slides
- High-pressure laminate worksurfaces with steel modesty panels
- Modesty panels include cable management
- Overhead storage extends over the return and includes LED lighting
- See C1/I-701 for further details

Disclaimer: Model numbers provided by the dealer as specified on their BOM.

QUANTITY

4

UNIT PRICE

\$2,900.00

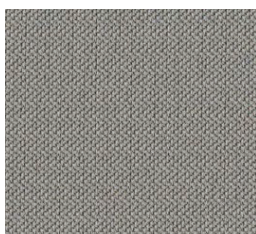
EXTENDED PRICE

\$11,600.00

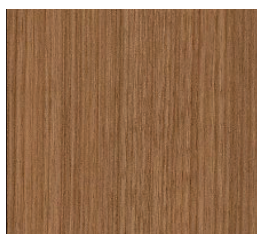
ROOM LOCATIONS:
QTY **ROOM NUMBER**

2 104 - OFFICE

2 203 - OFFICE

ITEM PHOTO/FINISH SAMPLES


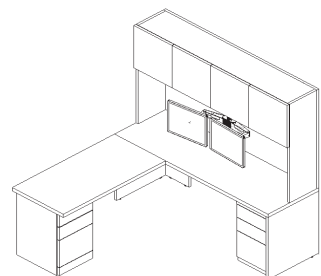
TACKBOARD



LAMINATE



TRIM



NAVAL FACILITIES ENGINEERING COMMAND MIDLANT
DATE:
PROJECT: P1594 Building RR1 Repair By Replacement

4/20/2023
BASE/CITY/STATE: U.S. Marine Corps Base, Camp Lejeune, NC

BPA CONTRACT #: TBD

EXPIRATION DATE: TBD

ITEM NO:
ITEM: **TOP LOAD WASHER**
E1
MANUFACTURER:

Speed Queen

MANUFACTURER ADDRESS:

Speed Queen

PO Box 990

Ripon, WI 54971

(800) 345-5649

ORDERING ADDRESS:

TBD

ANY VARIANCE OR MODIFICATION OF THIS SPECIFICATION WILL BE COORDINATED THROUGH NAVFAC
NAVFAC ID CONTACT: Peggy Noland, NAVFAC LANT

PROJECT ID CONTACT: Within Interior Design

DESCRIPTION:
MFG: Speed Queen

Model #: LWNE22SP115TW01

Dimensions: 25-5/8"W x 28"D x 43"H

Finishes: White

Technical Specifications:

- Top loading with 3.17 Cu Ft capacity
- Various wash/spin speed comboss.
- Automatic balancing suspension
- Four-Vane Polypropylene Agitator
- Energy Star certified

QUANTITY

10

UNIT PRICE

\$1,590.00

EXTENDED PRICE

\$15,900.00


Disclaimer: Model numbers provided by the dealer as specified on their BOM.

ROOM LOCATIONS:
QTY **ROOM NUMBER**

5 114 - LAUNDRY

5 211 - LAUNDRY

ITEM PHOTO/FINISH SAMPLES


NAVAL FACILITIES ENGINEERING COMMAND MIDLANT		DATE:																																										
PROJECT: P1594 Building RR1 Repair By Replacement		4/20/2023																																										
<table style="width: 100%; border: none;"> <tr> <td style="width: 30%;">BASE/CITY/STATE:</td> <td colspan="2">U.S. Marine Corps Base, Camp Lejeune, NC</td> </tr> <tr> <td>BPA CONTRACT #:</td> <td colspan="2">TBD</td> </tr> <tr> <td>EXPIRATION DATE:</td> <td colspan="2">TBD</td> </tr> <tr> <td>ITEM:</td> <td style="text-align: center;">FRONT LOAD DRYER</td> <td style="text-align: right;">ITEM NO: E2</td> </tr> <tr> <td colspan="3">MANUFACTURER:</td> </tr> <tr> <td colspan="3">Speed Queen</td> </tr> <tr> <td colspan="2">MANUFACTURER ADDRESS:</td> <td>ORDERING ADDRESS:</td> </tr> <tr> <td colspan="2">Speed Queen</td> <td>TBD</td> </tr> <tr> <td colspan="2">PO Box 990</td> <td></td> </tr> <tr> <td colspan="2">Ripon, WI 54971</td> <td></td> </tr> <tr> <td colspan="2">(800) 345-5649</td> <td></td> </tr> <tr> <td colspan="3"> ANY VARIANCE OR MODIFICATION OF THIS SPECIFICATION WILL BE COORDINATED THROUGH NAVFAC </td> </tr> <tr> <td colspan="3"> NAVFAC ID CONTACT: Peggy Noland, NAVFAC LANT </td> </tr> <tr> <td colspan="3"> PROJECT ID CONTACT: Within Interior Design </td> </tr> </table>			BASE/CITY/STATE:	U.S. Marine Corps Base, Camp Lejeune, NC		BPA CONTRACT #:	TBD		EXPIRATION DATE:	TBD		ITEM:	FRONT LOAD DRYER	ITEM NO: E2	MANUFACTURER:			Speed Queen			MANUFACTURER ADDRESS:		ORDERING ADDRESS:	Speed Queen		TBD	PO Box 990			Ripon, WI 54971			(800) 345-5649			ANY VARIANCE OR MODIFICATION OF THIS SPECIFICATION WILL BE COORDINATED THROUGH NAVFAC			NAVFAC ID CONTACT: Peggy Noland, NAVFAC LANT			PROJECT ID CONTACT: Within Interior Design		
BASE/CITY/STATE:	U.S. Marine Corps Base, Camp Lejeune, NC																																											
BPA CONTRACT #:	TBD																																											
EXPIRATION DATE:	TBD																																											
ITEM:	FRONT LOAD DRYER	ITEM NO: E2																																										
MANUFACTURER:																																												
Speed Queen																																												
MANUFACTURER ADDRESS:		ORDERING ADDRESS:																																										
Speed Queen		TBD																																										
PO Box 990																																												
Ripon, WI 54971																																												
(800) 345-5649																																												
ANY VARIANCE OR MODIFICATION OF THIS SPECIFICATION WILL BE COORDINATED THROUGH NAVFAC																																												
NAVFAC ID CONTACT: Peggy Noland, NAVFAC LANT																																												
PROJECT ID CONTACT: Within Interior Design																																												
DESCRIPTION: <table style="width: 100%; border: none;"> <tr> <td style="width: 15%;">MFG:</td> <td>Speed Queen</td> </tr> <tr> <td>Model #:</td> <td>LDEE7RGS173TW01</td> </tr> <tr> <td>Dimensions:</td> <td>27"W x 28"D x 43"H</td> </tr> <tr> <td>Finishes:</td> <td>White</td> </tr> </table> Technical Specifications: <ul style="list-style-type: none"> - Front load dryer with reversible door ginge - Galvanized steel cylinder - 6 dry cycles - Moisture sensing technology - Energy Star certified Disclaimer: Model numbers provided by the dealer as specified on their BOM.	MFG:	Speed Queen	Model #:	LDEE7RGS173TW01	Dimensions:	27"W x 28"D x 43"H	Finishes:	White	<table border="1" style="width: 100%; border-collapse: collapse;"> <tr> <td style="padding: 5px;">QUANTITY</td> </tr> <tr> <td style="padding: 10px;">10</td> </tr> <tr> <td style="padding: 5px;">UNIT PRICE</td> </tr> <tr> <td style="padding: 10px;">\$1,075.00</td> </tr> <tr> <td style="padding: 5px;">EXTENDED PRICE</td> </tr> <tr> <td style="padding: 10px;">\$10,750.00</td> </tr> </table>	QUANTITY	10	UNIT PRICE	\$1,075.00	EXTENDED PRICE	\$10,750.00																													
MFG:	Speed Queen																																											
Model #:	LDEE7RGS173TW01																																											
Dimensions:	27"W x 28"D x 43"H																																											
Finishes:	White																																											
QUANTITY																																												
10																																												
UNIT PRICE																																												
\$1,075.00																																												
EXTENDED PRICE																																												
\$10,750.00																																												
ROOM LOCATIONS: <table style="width: 100%; border: none;"> <tr> <td style="width: 10%;">QTY</td> <td>ROOM NUMBER</td> </tr> <tr> <td style="text-align: center;">5</td> <td>114 - LAUNDRY</td> </tr> <tr> <td style="text-align: center;">5</td> <td>211 - LAUNDRY</td> </tr> </table>			QTY	ROOM NUMBER	5	114 - LAUNDRY	5	211 - LAUNDRY																																				
QTY	ROOM NUMBER																																											
5	114 - LAUNDRY																																											
5	211 - LAUNDRY																																											
ITEM PHOTO/FINISH SAMPLES <div style="text-align: center;">  </div>																																												

NAVAL FACILITIES ENGINEERING COMMAND MIDLANT
DATE:
PROJECT: P1594 Building RR1 Repair By Replacement

4/20/2023
BASE/CITY/STATE: U.S. Marine Corps Base, Camp Lejeune, NC

BPA CONTRACT #: TBD

EXPIRATION DATE: TBD

ITEM NO:
ITEM: **4 HIGH FILE CABINET**
S1
MANUFACTURER:

Haworth

MANUFACTURER ADDRESS:

Haworth

One Haworth Center

Holland, MI 49423

(616) 393-3000

ORDERING ADDRESS:

TBD

ANY VARIANCE OR MODIFICATION OF THIS SPECIFICATION WILL BE COORDINATED THROUGH NAVFAC
NAVFAC ID CONTACT: Peggy Noland, NAVFAC LANT

PROJECT ID CONTACT: Within Interior Design

DESCRIPTION:
MFG: Haworth

Model #: X-Series

Dimensions: 30"W x 18-3/4"D x 51-1/2"H

Finishes: Laminate: Neo Walnut

Technical Specifications:

- 4H file cabinet
- Each drawer has side to side hanging bars
- Drawer fronts have a laminate finish
- Multiple options for drawer pulls
- Drawers have full-extension ball bearing slides
- Cabinet includes a lock that secures all drawers
- Base includes adjustable glides

Disclaimer: Model numbers provided by the dealer as specified on their BOM.

QUANTITY

4

UNIT PRICE

\$715.00

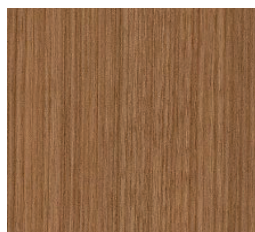
EXTENDED PRICE

\$2,860.00

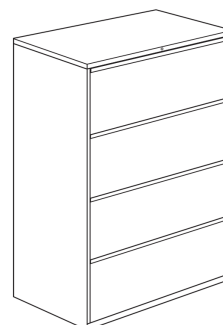
ROOM LOCATIONS:
QTY **ROOM NUMBER**

2 104 - OFFICE

2 203 - OFFICE

ITEM PHOTO/FINISH SAMPLES


LAMINATE



NAVAL FACILITIES ENGINEERING COMMAND MIDLANT
DATE:
PROJECT: P1594 Building RR1 Repair By Replacement

4/20/2023
BASE/CITY/STATE: U.S. Marine Corps Base, Camp Lejeune, NC

BPA CONTRACT #: TBD

EXPIRATION DATE: TBD

ITEM NO:
ITEM: **BOOKSHELF**
S2
MANUFACTURER:

Allsteel

MANUFACTURER ADDRESS:

Allsteel

2210 Second Avenue

Muscatine IA 52761

(563) 272-4800

ORDERING ADDRESS:

TBD

ANY VARIANCE OR MODIFICATION OF THIS SPECIFICATION WILL BE COORDINATED THROUGH NAVFAC
NAVFAC ID CONTACT: Peggy Noland, NAVFAC LANT

PROJECT ID CONTACT: Within Interior Design

DESCRIPTION:
MFG: Allsteel

Model #: Approach

Dimensions: 30"W x 14 1/4"D x 71-1/2"H

Finishes: Laminate: Neo Walnut

Technical Specifications:

- 5H Bookcase
- Includes 4 adjustable shelves
- Shelves accommodate 5 rows of standard height binders
- Interior and exterior laminate finish matches
- Base includes adjustable glides

QUANTITY

2

UNIT PRICE

\$825.00

EXTENDED PRICE

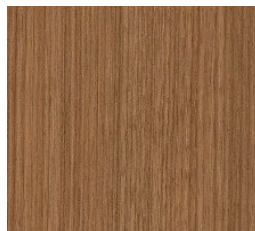
\$1,650.00

Disclaimer: Model numbers provided by the dealer as specified on their BOM.

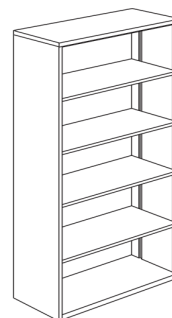
ROOM LOCATIONS:
QTY **ROOM NUMBER**

1 104 - OFFICE

1 203 - OFFICE

ITEM PHOTO/FINISH SAMPLES


LAMINATE



NAVAL FACILITIES ENGINEERING COMMAND MIDLANT
DATE:
PROJECT: P1594 Building RR1 Repair By Replacement

4/20/2023
BASE/CITY/STATE: U.S. Marine Corps Base, Camp Lejeune, NC

BPA CONTRACT #: TBD

EXPIRATION DATE: TBD

ITEM NO:
ITEM: **WARDROBE**
S3
MANUFACTURER:

Spacesaver

MANUFACTURER ADDRESS:

 Spacesaver
 1450 Janesville Ave
 Fort Atkinson, WI 53538
 (800) 255-8170

ORDERING ADDRESS:

TBD

ANY VARIANCE OR MODIFICATION OF THIS SPECIFICATION WILL BE COORDINATED THROUGH NAVFAC
NAVFAC ID CONTACT: Peggy Noland, NAVFAC LANT

PROJECT ID CONTACT: Within Interior Design

DESCRIPTION:	QUANTITY
MFG: Spacesaver Model #: Gear Bag Locker Dimensions: 18"W x 24"D x 72"H Finishes: WP 216 Whisper	240
Technical Specifications: - Durable steel construction - Includes corner gussets for added durability - Textured powder-coated finish - Perforated mesh door - Box construction and double thickness doors - Variety of locking types	UNIT PRICE \$710.00
Disclaimer: Model numbers provided by the dealer as specified on their BOM.	EXTENDED PRICE \$170,400.00

ROOM LOCATIONS:

QTY	ROOM NUMBER	QTY	ROOM NUMBER
28	109 - SQUAD BAY	28	207 - SQUAD BAY
22	112 - SQUAD BAY	30	209 - SQUAD BAY
30	125 - SQUAD BAY	16	216 - SQUAD BAY
28	127 - SQUAD BAY	30	222 - SQUAD BAY
		28	224 - SQUAD BAY

ITEM PHOTO/FINISH SAMPLES


PAINTED METAL



NAVAL FACILITIES ENGINEERING COMMAND MIDLANT
DATE:
PROJECT: P1594 Building RR1 Repair By Replacement

4/20/2023
BASE/CITY/STATE: U.S. Marine Corps Base, Camp Lejeune, NC

BPA CONTRACT #: TBD

EXPIRATION DATE: TBD

ITEM NO:
ITEM: **STORAGE SHELF**
S4
MANUFACTURER:

Global Industrial

MANUFACTURER ADDRESS:

 Global Industrial
 2505 Mill Center Parkway
 Buford, GA 30518
 (888) 978-7759

ORDERING ADDRESS:

TBD

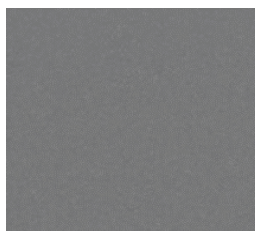
ANY VARIANCE OR MODIFICATION OF THIS SPECIFICATION WILL BE COORDINATED THROUGH NAVFAC
NAVFAC ID CONTACT: Peggy Noland, NAVFAC LANT

PROJECT ID CONTACT: Within Interior Design

DESCRIPTION:	QUANTITY
MFG: Global Industrial Model #: T9FB2296902 Dimensions: 36" W x 18"D X 60"H Finishes: Grey	12
Technical Specifications: - Durable steel construction - 5/8" wood deck shelving - 1500 lb weight capacity - 14 gauge steel uprights	UNIT PRICE \$255.00
Disclaimer: Model numbers provided by the dealer as specified on their BOM.	EXTENDED PRICE \$3,060.00

ROOM LOCATIONS:

QTY	ROOM NUMBER
2	101 - STG
3	106 - STG
2	131 - STG
2	202 - STG
3	205 - STG

ITEM PHOTO/FINISH SAMPLES


PAINTED METAL



Furniture Plans

P1594 Building RR1 Repair By Replacement
MCB Camp Lejeune, NC
Furniture Fixtures & Equipment Package

within
INTERIOR DESIGN



A1 FIRST FLOOR FURNITURE PLAN
SCALE: 3/32" = 1'-0"

GFGI SCHEDULE		
NO.	ITEM	QTY
X1	45" WALL MOUNTED TV	2
X2	70" WALL MOUNTED TV	1



FURNITURE NOTES

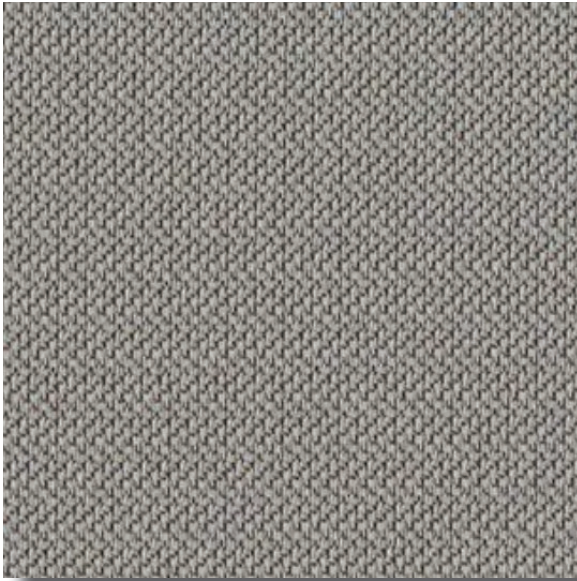
- F. F&E ITEMS ARE NOT INCLUDED ON THE CONSTRUCTION CONTRACT AND MAY BE FUNDED SEPARATELY THROUGH A CONTRACT MODIFICATION.
- B. REFER TO ARCHITECTURAL COORDINATION TO BUILDING SYSTEMS AND STRUCTURE.
- C. REFER TO ELECTRICAL DRAWINGS FOR COORDINATION OF LIGHTING, POWER, DATA, COMMUNICATIONS, AND SECURITY. COORDINATION OF ELECTRICAL AND COMMUNICATIONS ELECTRICAL DEVICES AND EQUIPMENT FOR COORDINATION TO FURNITURE LAYOUTS. CONTRACTOR MUST IDENTIFY ANY CONFLICTS WITH FURNITURE LAYOUTS.
- D. CONTRACTOR IS RESPONSIBLE FOR PROVIDING TO PROVIDE F&E DATA AND COMPONENTS LISTING ITEMS OF FURNISHINGS AND COMPONENTS LISTING ITEMS OF FURNISHINGS. CONTRACTOR MUST OBTAIN FROM THE GOVERNMENT FURNISHED, CONTRACTOR INSTALLED (GFI), AND GOVERNMENT FURNISHED, GOVERNMENT INSTALLED (GFI), REQUIRING CABLING AND CONNECTIONS.
- E. F&E CONTRACTOR MUST COORDINATE WITH GCS ELECTRICAL CONTRACTOR AND/OR DATA CONTRACTOR PRIOR TO INSTALLATION OF ELECTRIFIED FURNISHINGS.
- F. INSTALLATION OF DATA OR FURNITURE ITEMS MUST BE COVERED BY THE GENERAL CONTRACTOR'S MEASUREMENTS AND VERIFICATION REPORT.
- G. CONTRACTOR SHALL PROVIDE MEASUREMENTS AND SITE CONDITIONS TO ENSURE PROPER FIT OF ALL F&E FURNISHINGS MUST NOT OVERLAP OR OBSTRUCT DOOR FRAMES, WALL SWITCHES, THERMOSTATS, OR OTHER WALL MOUNTED DEVICES.
- H. CONTRACTOR SHALL PROVIDE FURNISHINGS REQUIRED TO MEET BUILDING CONDITIONS AT THE TIME OF INSTALLATION MUST BE THE RESPONSIBILITY OF THE F&E CONTRACTOR. ALL MODIFICATIONS MUST BE APPROVED IN WRITING BY A CONTRACTOR'S REPRESENTATIVE PRIOR TO INSTALLATION OF THE FURNISHINGS.
- J. DUAL MONITOR ARMS AND POWERSTRIPS NOT SHOWN ON DRAWINGS TO BE PROVIDED AT DESKS, UNLESS NOTED OTHERWISE.
- K. INSTALL MARKERBOARDS AND BULLETIN BOARDS AT 3'0" TO 3'6" FROM THE CENTER OF THE DESK.
- L. INSTALL WALL CLOCKS AT 8'0" AFT TO CENTER OF CLOCK UNLESS NOTED OTHERWISE.
- M. QUANTITIES ON FURNITURE SCHEDULE ARE TOTALS FOR ENTIRE PROJECT AND NOT INDICATIVE OF EACH SHEET.

[illegible]

Finish Boards

P1594 Building RR1 Repair By Replacement
MCB Camp Lejeune, NC
Furniture Fixtures & Equipment Package

within
INTERIOR DESIGN



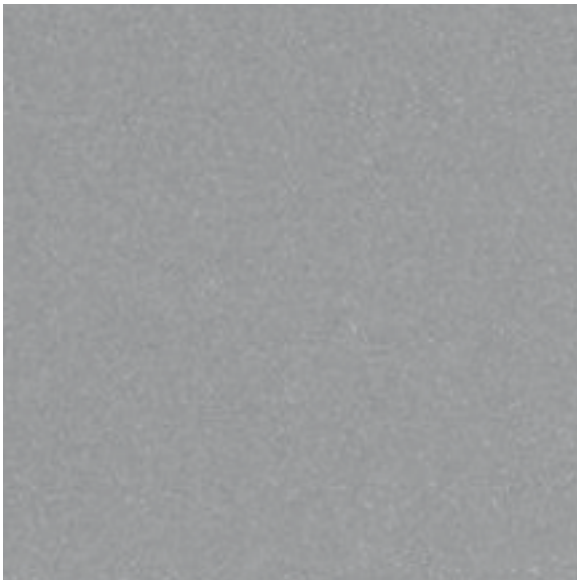
D1 & D2 - Desk Tackboard Fabric

Haworth
Chevron, Meander



D1 & D2 - Desk Laminate

Haworth
Cafelle



D1 & D2 - Trim Finish

Haworth
Metallic Silver



C1 - Task Chair Seat Upholstery

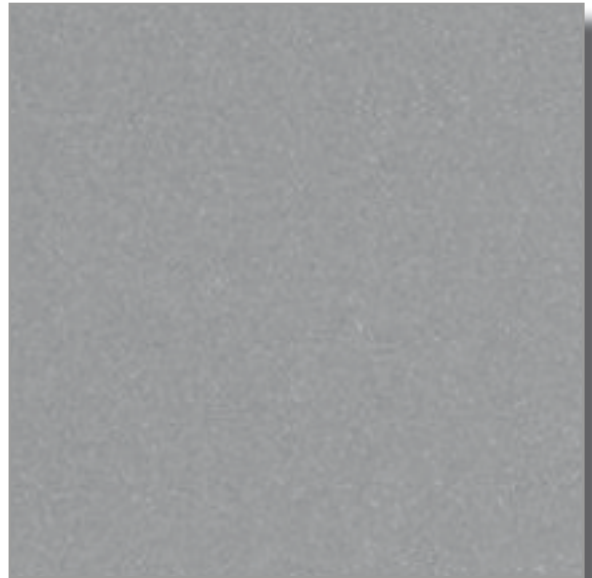
Haworth
Wellington, Black



C1 - Task Chair Back Mesh

Haworth

Zody Knit, Rosewood



C1 - Task Chair Base and Frame

Haworth

Metallic Silver



C1 - Task Chair Trim

Haworth

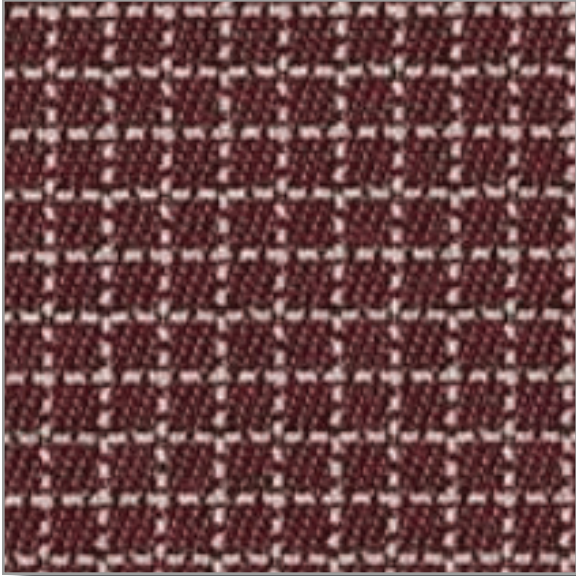
Fog



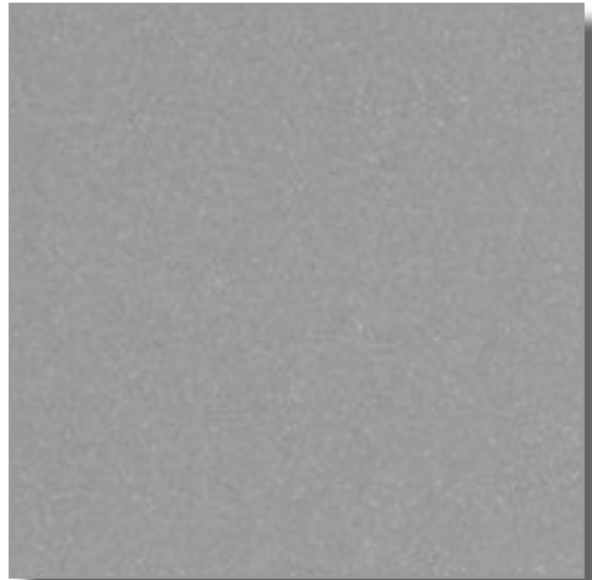
C2 - Guest Chair Seat Upholstery

Haworth

Gauge, Narrow



C2 - Guest Chair Back Upholstery
Haworth
Squares, Kendall



C2 - Guest Chair Base Finish
Haworth
Metallic Silver



C2 - Guest Chair Arm Cap
Haworth
Black



C3 - Waiting Chair Upholstery
Haworth
Silica Etch, Slate



B1 - Bed Frame Finish

University Loft
Jute



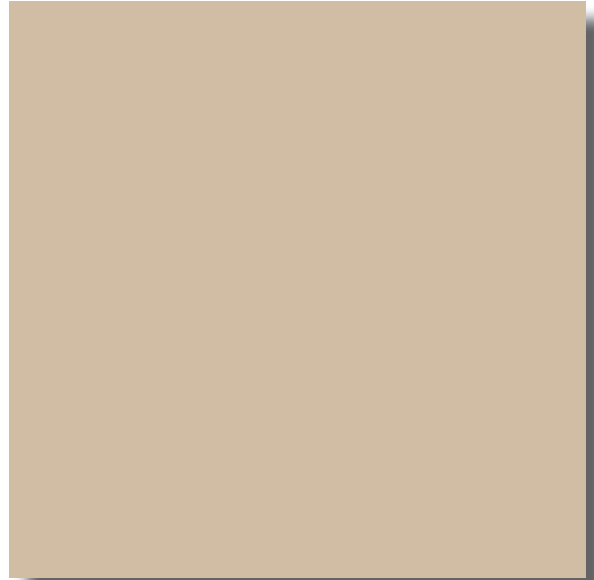
B1 - Bed Laminate Finish

University Loft
Cafelle



B3 - Bedding Finish

Valley Forge Fabrics
Gun Metal/Tea Chest



B4 - Wardrobe Finish

Spacesaver
Whisper