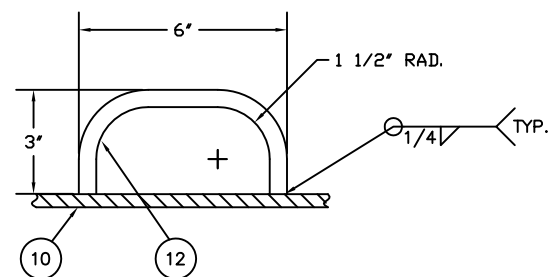
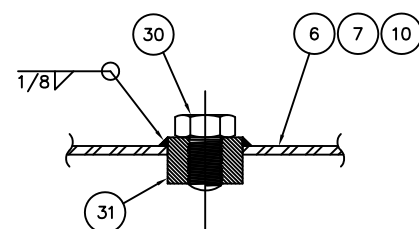


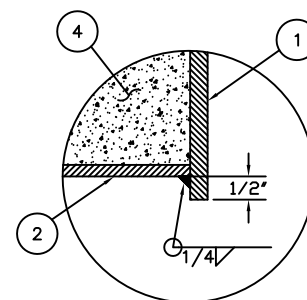
7x20 LIR BUOY  
SCALE: 1-1/2"=1'-0"



DETAIL A  
SCALE: NONE

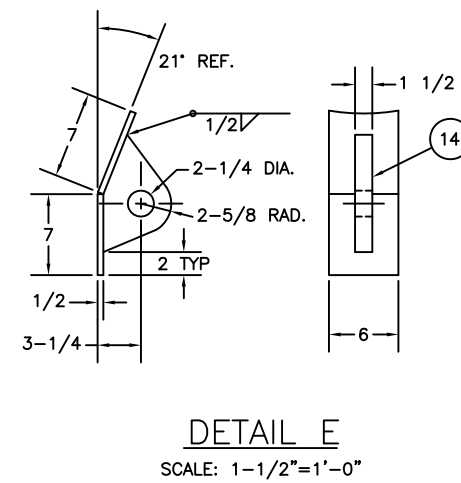
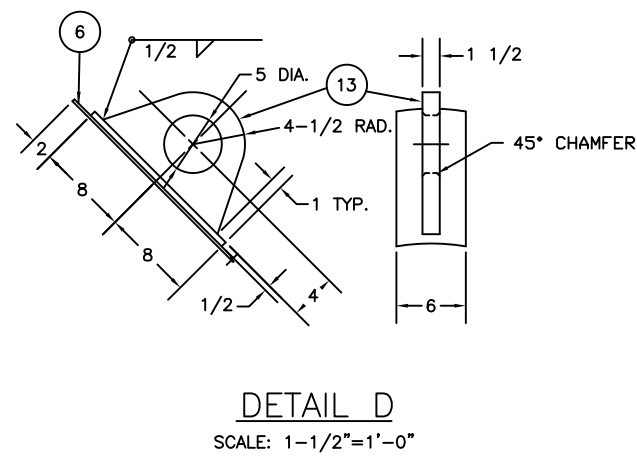
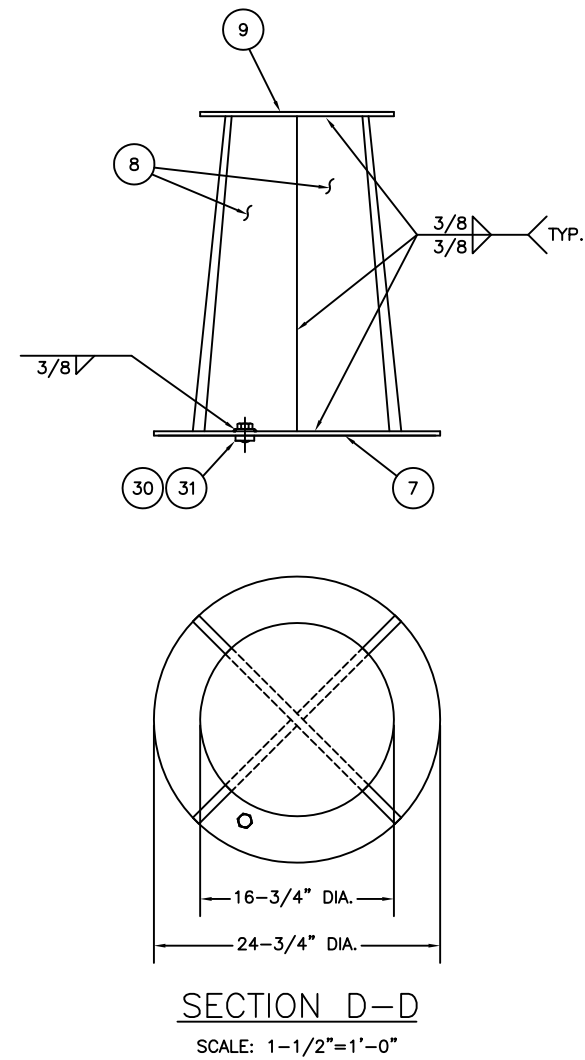
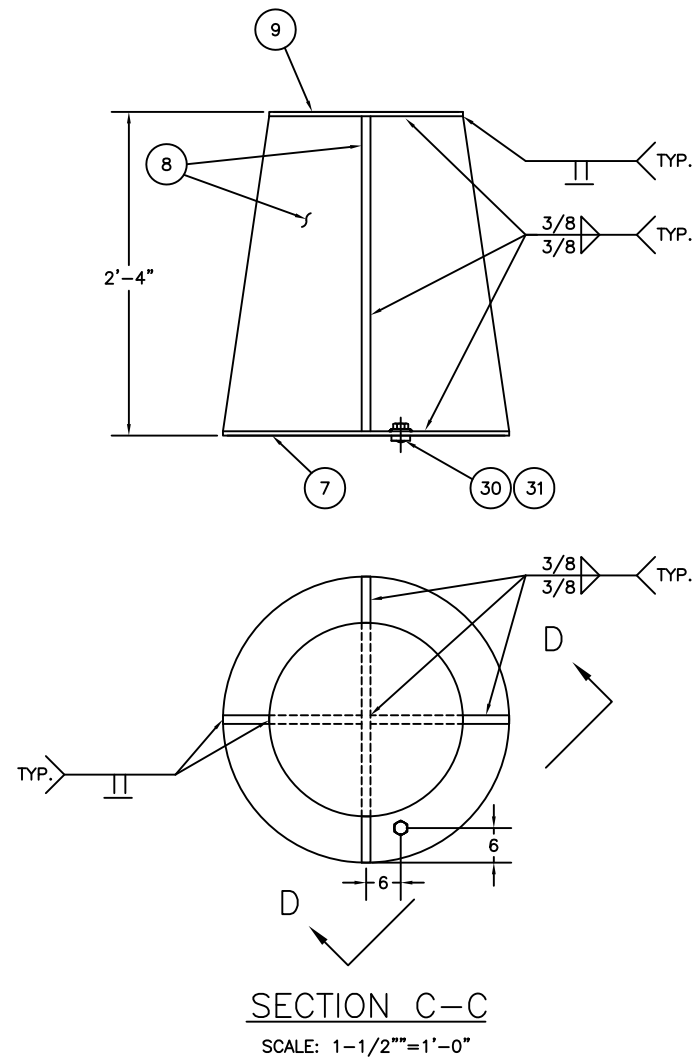
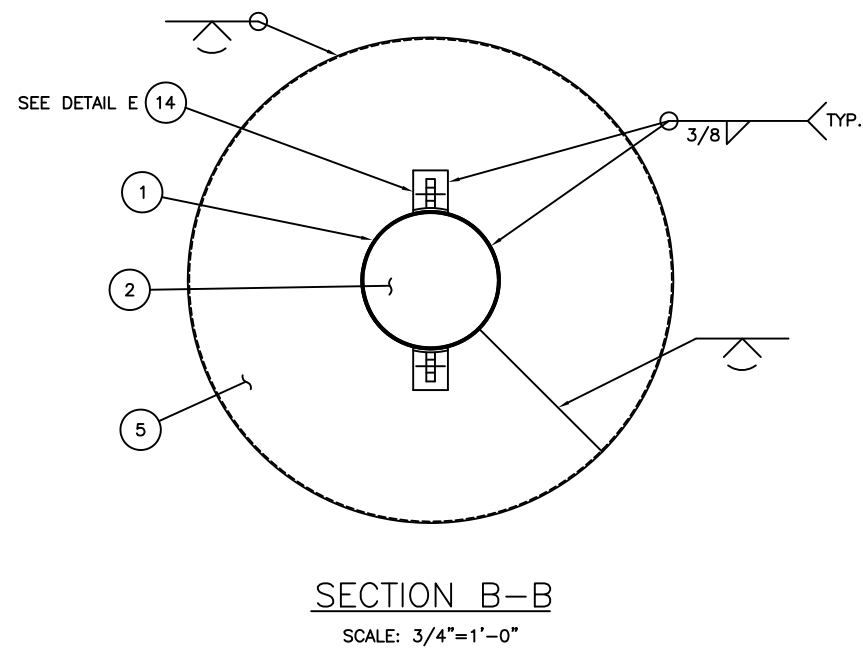
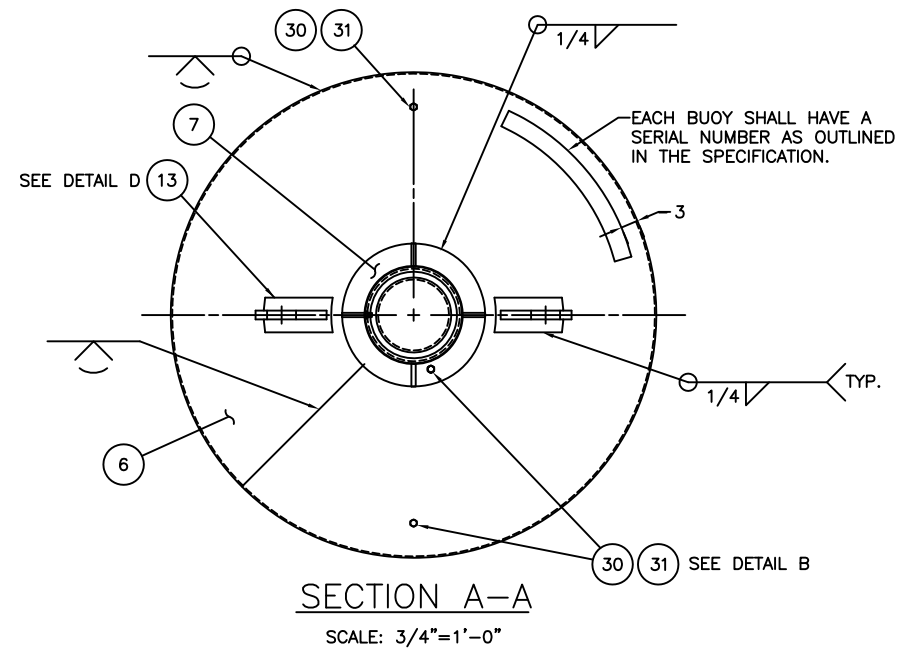


DETAIL B  
SCALE: NONE

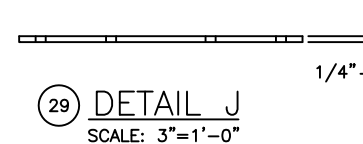
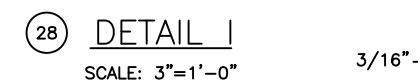
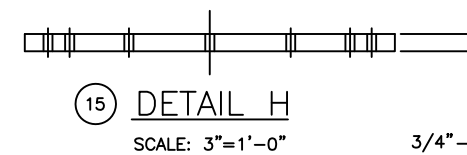
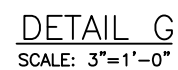


DETAIL C  
SCALE: NONE

REV.	DATE	WD	MODIFIED THICKNESS OF ITEM 28.	SM
DESIGNED: S.M.			U.S. COAST GUARD	HEADQUARTERS
DRAWN: S.M.			CIVIL ENGINEERING	
TRACED:			2010 TYPE	
CHECKED:			7x20LIR	
REVIEWED BY:			ICE BUOY	
S. McEvoy				
PROJECT ENGINEER				
REVIEWED BY:				
W. Danzik				
CG-432B				
REVIEWED BY:				
S. Walker				
CG-432				
APPROVED:			Stan Walker for	DATE 03/15/2011
CHIEF, CG-43				
UNLESS OTHERWISE SPECIFIED: ALL DIMENSIONS ARE IN INCHES. TOLERANCES: DIM. ±1/8 ANG. ±1°				REV. A
DRAWING NUMBER 121193				SCALE: AS NOTED SHEET 1 OF 4



REV.	DATE	WD	MODIFIED THICKNESS OF ITEM 28.	SM
DESIGNED: S.M.	10-7-16	APPR.	DESCRIPTION	BY
DRAWN: S.M.			U.S. COAST GUARD HEADQUARTERS	
TRACED:			CIVIL ENGINEERING	
CHECKED:			2010 TYPE	
REVIEWED BY:			7x20LIR	
S. McEvoy			ICE BUOY	
PROJECT ENGINEER				
REVIEWED BY:				
W. Danzik				
CG-432B				
REVIEWED BY:				
S. Walker				
CG-432				
UNLESS OTHERWISE SPECIFIED: ALL DIMENSIONS ARE IN INCHES. TOLERANCES: DIM. ±1/8 ANG. ±1°			APPROVED: Stan Walker for	DATE 03/15/2011
			CHIEF, CG-43	
			DRAWING NUMBER	REV.
			121193	A
			SCALE: AS NOTED	SHEET 2 OF 4



A	10-7 -16	WD	MODIFIED THICKNESS OF ITEM 28.	SM
REV.	DATE	APPR.	DESCRIPTION	BY
DESIGNED: S.M. DRAWN: S.M. TRACED: CHECKED: REVIEWED BY: S. McEvoy PROJECT ENGINEER REVIEWED BY: W. Danzik CG-432B			U.S. COAST GUARD HEADQUARTERS  CIVIL ENGINEERING  2010 TYPE 7x20LIR ICE BUOY	
REVIEWED BY: S. Walker CG-432			APPROVED: Stan Walker for 03/15/2011 CHIEF, CG-43	
UNLESS OTHERWISE SPECIFIED: ALL DIMENSIONS ARE IN INCHES. TOLERANCES: DIM. $\pm 1/8$ ANG. $\pm 1^\circ$			DRAWING NUMBER 121193 REV. A	
			SCALE: AS NOTED	SHEET 3 OF 4

BILL OF MATERIALS				
ITEM NO.	NO. REQ.	DESCRIPTION	MATL.	REMARKS
1	1	COUNTERWEIGHT PIPE	STEEL	24 O.D. 3/8 WALL
2	1	BOTTOM PLATE	STEEL	1/4 THK.
3	3	COUNTERWEIGHT BAR	STEEL	RE-BAR 1x23 LG.
4	1	COUNTERWEIGHT	CONCRETE	SEE NOTE 2
5	1	BOTTOM CONICAL SECTION	STEEL	3/8 THK.
6	1	MIDDLE CONICAL SECTION	STEEL	1/4 THK.
7	1	LOWER RADAR PLATE	STEEL	3/8 THK.
8	3	RADAR PANELS	STEEL	3/4 THK.
9	1	UPPER RADAR PLATE	STEEL	3/8 THK.
10	1	BATTERY POCKET PIPE	STEEL	16 O.D. 3/8 WALL
11	1	TOP RING	STEEL	3 WIDE x 1/2 THK.
12	1	GRAB BAR	STEEL	1/2 DIA. ROD
13	2	LIFTING EYE	STEEL	SEE DETAIL D
14	2	MOORING EYE	STEEL	SEE DETAIL E
15	1	SUPPORT RING	STEEL	SEE DETAIL H
16	1	BATTERY POCKET FLANGE	STEEL	15-1/4 OD x 10 ID x 1/4 THK
17	1	BATTERY POCKET WRAPPER	STEEL	10 ID x 36 LG x 1/8 THK.
18	1	BATTERY POCKET BOTTOM	STEEL	15-1/4 OD x 1/4 THK
19	1	BATTERY POCKET COVER	STEEL	SEE DRAWING 121186
20	1	TOP STIFFENING RING	STEEL	3/8 THKx3 FLAT BAR
21	1	BOTTOM STIFFENING RING	STEEL	3/8 THKx3 FLAT BAR
22	1	MPV-LED ADAPTER PLATE	STAIN. STEEL	SEE DRAWING 121182
23	12	HEX HD. BOLT	STAIN. STEEL	3/8-16x2 LG.
24	12	NYLON WASHER	NYLON	3/8
25	12	STOP NUT	STAIN. STEEL	3/8-16
26	8	HEX HEAD BOLT	STAIN. STEEL	3/8-16UNCx1-1/4 LG
27	8	STOP NUT	STAIN. STEEL	3/8-16UNC
28	1	ADAPTER PLATE GASKET	RUBBER	SEE DETAIL I
29	1	BATTERY POCKET GASKET	RUBBER	SEE DETAIL J
30	4	PIPE PLUG	STAIN. STEEL	3/4 IPS
31	4	HALF COUPLING	STAIN. STEEL	3/4 IPS
32	1	MPV-LED LANTERN		

▷ FOR REFERENCE ONLY. INSTALLED BY GOVERNMENT AT DESTINATION.

NOTES:

1. SEE LATEST REVISION OF U.S.C.G CIVIL ENGINEERING SPECIFICATION No. 464 FOR FABRICATION REQUIREMENTS.
2. THE TOTAL WEIGHT OF ITEMS 1, 2, 3, & 4 SHALL BE 3,055# (+5% OR -1%).

A	10-7-16	WD	MODIFIED THICKNESS OF ITEM 28.		SM
REV.	DATE	APPR.	DESCRIPTION		
DESIGNED: S.M. DRAWN: S.M. TRACED: CHECKED: REVIEWED BY:			U.S. COAST GUARD HEADQUARTERS		
S. McEvoy PROJECT ENGINEER			CIVIL ENGINEERING		
W. Danzik CG-432B			2010 TYPE 7x20LIR ICE BUOY		
S. Walker CG-432			APPROVED: Stan Walker for		DATE 03/15/2011
UNLESS OTHERWISE SPECIFIED: ALL DIMENSIONS ARE IN INCHES. TOLERANCES: DIM. ±1/8 ANG. ±1°			DRAWING NUMBER		
			121193		REV. A
			SCALE: AS NOTED SHEET 4 OF 4		