

HARDSCAPE LEGEND

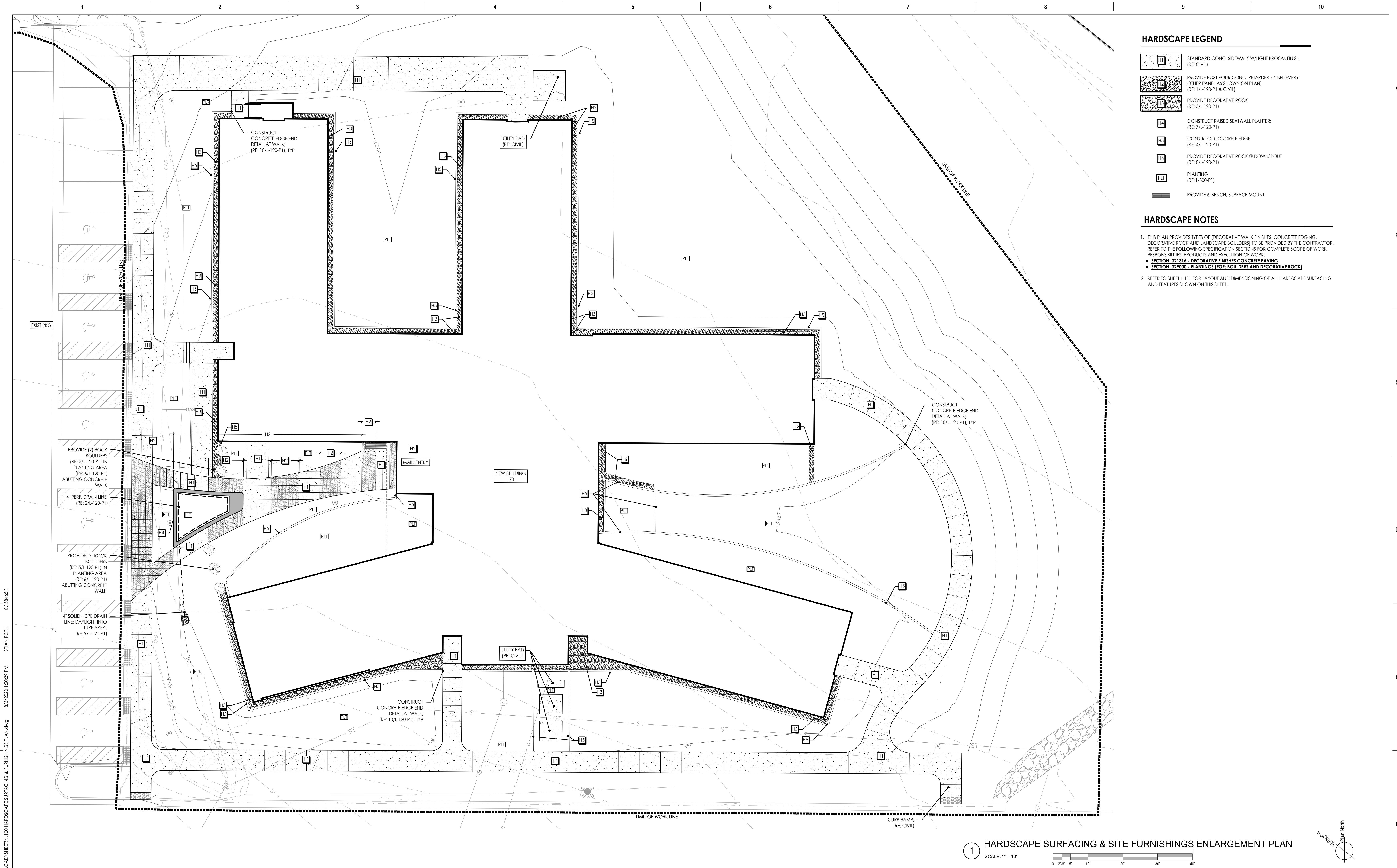
- H1** STANDARD CONC. SIDEWALK W/LIGHT BROOM FINISH (RE: CIVIL)
- H2** PROVIDE POST POUR CONC. RETARDER FINISH (EVERY OTHER PANEL AS SHOWN ON PLAN) (RE: 1/L-120-P1 & CIVIL)
- H3** PROVIDE DECORATIVE ROCK (RE: 3/L-120-P1)
- H4** CONSTRUCT RAISED SEATWALL PLANTER: (RE: 7/L-120-P1)
- H5** CONSTRUCT CONCRETE EDGE (RE: 4/L-120-P1)
- H6** PROVIDE DECORATIVE ROCK @ DOWNSPOUT (RE: 8/L-120-P1)
- PL1** PLANTING (RE: L-300-P1)
- B** PROVIDE 6' BENCH: SURFACE MOUNT

HARDSCAPE NOTES

- THIS PLAN PROVIDES TYPES OF [DECORATIVE WALK FINISHES, CONCRETE EDGING, DECORATIVE ROCK AND LANDSCAPE BOULDERS] TO BE PROVIDED BY THE CONTRACTOR. REFER TO THE FOLLOWING SPECIFICATION SECTIONS FOR COMPLETE SCOPE OF WORK, RESPONSIBILITIES, PRODUCTS AND EXECUTION OF WORK:
 - SECTION 321316 - DECORATIVE FINISHES CONCRETE PAVING
 - SECTION 329000 - PLANTINGS (FOR: BOULDERS AND DECORATIVE ROCK)
- REFER TO SHEET L-111 FOR LAYOUT AND DIMENSIONING OF ALL HARDSCAPE SURFACING AND FEATURES SHOWN ON THIS SHEET.

1 HARDSCAPE SURFACING & SITE FURNISHINGS PLAN
SCALE: 1" = 20'

<p>Issued: _____ Date: _____</p>		<p>CONSULTANTS:</p> <p>HOEFER WYSOCKI LAND3</p> <p>THAO TONKAMPY CREEK PARKWAY SUITE 400, LEAWOOD, KANSAS 66207</p> <p>Protection Engineering JIRSA HEDRICK</p> <p>CONSULTANTS Structural Engineers</p>		<p>ARCHITECT/ENGINEERS:</p> <p>VALHALLA ENGINEERING GROUP, LLC</p> <p>750 W HAMPDEN AVE SUITE #300 ENGLEWOOD CO 80110 (720) 550-6307 WWW.VALHALLAENGINEERING.COM</p> <p>VEG 4.11</p>		<p>STAMP:</p> <p>VALHALLA ENGINEERING GROUP, LLC</p> <p>750 W HAMPDEN AVE SUITE #300 ENGLEWOOD CO 80110 (720) 550-6307 WWW.VALHALLAENGINEERING.COM</p> <p>08-05-20</p>		<p>U.S. Department of Veterans Affairs</p>		<p>Drawing Title</p> <p>HARDSCAPE SURFACING & SITE FURNISHINGS PLAN</p> <p>Approved: Project Director</p>		<p>Phase</p> <p>100% CONSTRUCTION DOCUMENTS</p>		<p>Project Title</p> <p>OUTPATIENT MENTAL HEALTH / EDUCATION ADDITION</p> <p>Location</p> <p>Issue Date: 08/05/2020</p> <p>Checked: bgb</p> <p>Drawn: bdr</p>		<p>Project Number</p> <p>436-114</p> <p>Building Number</p> <p>173</p> <p>Drawing Number</p> <p>L-100-P1</p>	
----------------------------------	--	---	--	---	--	---	--	---	--	--	--	--	--	--	--	---	--






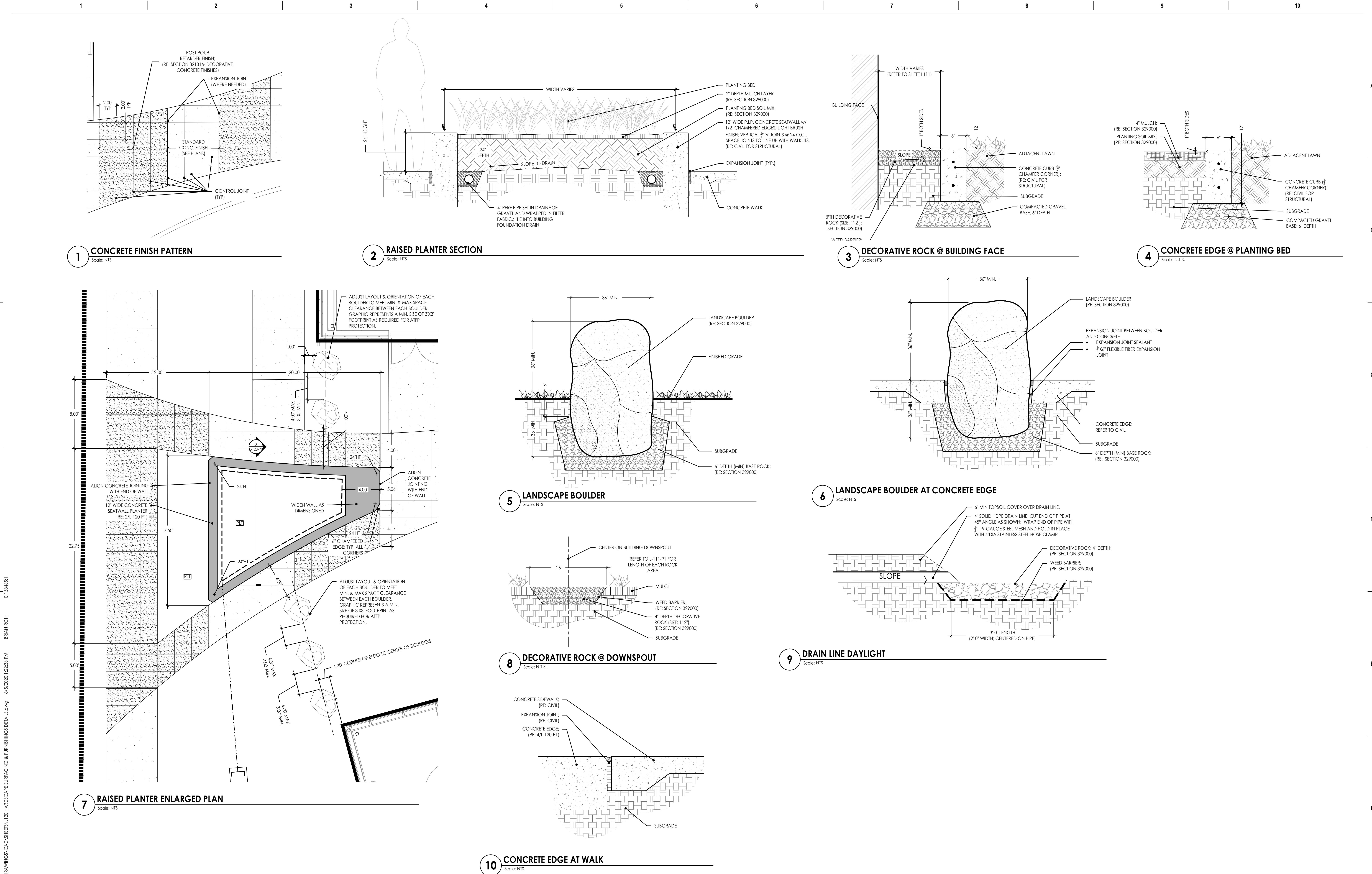
HARDSCAPE LEGEND

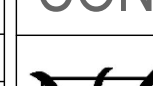


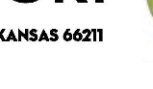






- H1** STANDARD CONC. SIDEWALK W/LIGHT BROOM FINISH (RE: CIVIL)
- H2** PROVIDE POST POUR CONC. RETARDER FINISH (EVERY OTHER PANEL AS SHOWN ON PLAN) (RE: 1/L-120-P1 & CIVIL)
- H3** PROVIDE DECORATIVE ROCK (RE: 3/L-120-P1)
- H4** CONSTRUCT RAISED SEATWALL PLANTER: (RE: 7/L-120-P1)
- H5** CONSTRUCT CONCRETE EDGE (RE: 4/L-120-P1)
- H6** PROVIDE DECORATIVE ROCK @ DOWNSPOUT (RE: 8/L-120-P1)
- PL1** PLANTING (RE: L-300-P1)
- PL2** PROVIDE 6" BENCH: SURFACE MOUNT

HARDSCAPE NOTES

- THIS PLAN PROVIDES TYPES OF [DECORATIVE WALK FINISHES, CONCRETE EDGING, DECORATIVE ROCK AND LANDSCAPE BOULDERS] TO BE PROVIDED BY THE CONTRACTOR. REFER TO THE FOLLOWING SPECIFICATION SECTIONS FOR COMPLETE SCOPE OF WORK, RESPONSIBILITIES, PRODUCTS AND EXECUTION OF WORK:
 - SECTION 321316 - DECORATIVE FINISHES CONCRETE PAVING
 - SECTION 322000 - PLANTINGS (FOR: BOULDERS AND DECORATIVE ROCK)
- REFER TO SHEET L-111 FOR LAYOUT AND DIMENSIONING OF ALL HARDSCAPE SURFACING AND FEATURES SHOWN ON THIS SHEET.

CONSULTANTS:		ARCHITECT/ENGINEERS:		STAMP:		Drawing Title		Phase		Project Title		Project Number	
 THAO TONKAMPY CREEK PARKWAY SUITE 400, LEAWOOD, KANSAS 66211		 750 W HAMPTON AVE SUITE #300 ENGLEWOOD CO 80110 (720) 560-6307 WWW.VALHALLAENGINEERING.COM		 08-05-20		HARDSCAPE SURFACING & SITE FURNISHINGS ENLARGEMENT PLAN		100% CONSTRUCTION DOCUMENTS		OUTPATIENT MENTAL HEALTH / EDUCATION ADDITION		436-114	
Issued:		Date:		Approved: Project Director						Location		Drawing Number	
										Issue Date		Checked	
										08/05/2020		bgb	
												bdr	
												L-110-P1	



Issued:		Date:		<div>CONSULTANTS:</div> <div><div><div>HOEFER WYSOCKI</div><div>11640 TONKAWAY CREEK PARKWAY SUITE 400, LEANWOOD, KANSAS 66211</div></div><div><div>LAND 3</div><div>LLC</div></div><div><div>Protection Engineering</div><div>CONSULTANTS</div></div><div><div>JIRSA HEDRICK</div><div>Structural Engineers</div></div></div> <td colspan="2"><div>ARCHITECT/ENGINEERS:</div><div><div>VALHALLA ENGINEERING GROUP, LLC</div><div>750 W HAMPTON AVE SUITE #300 ENGLEWOOD CO 80110 (720) 560-6307 WWW.VALHALLAENGINEERING.COM</div></div><div>VEG 4.11</div></td> <td colspan="2"><div>STAMP:</div><div></div></td> <td colspan="2"><div><div>U.S. Department of Veterans Affairs</div></div></td> <td colspan="2"><div>Drawing Title</div><div>HARDSCAPE SURFACING & SITE FURNISHINGS DETAILS</div><div>Approved: Project Director</div></td> <td colspan="2"><div>Phase</div><div>100% CONSTRUCTION DOCUMENTS</div></td> <td colspan="2"><div>Project Title</div><div>OUTPATIENT MENTAL HEALTH / EDUCATION ADDITION</div><div>Location</div><div><div>Issue Date</div><div>08/05/2020</div><div>Checked</div><div>bgb</div><div>Drawn</div><div>bdr</div></div></td> <td colspan="2"><div>Project Number</div><div>436-114</div><div>Building Number</div><div>173</div><div>Drawing Number</div><div>L-120-P1</div></td>		<div>ARCHITECT/ENGINEERS:</div> <div><div>VALHALLA ENGINEERING GROUP, LLC</div><div>750 W HAMPTON AVE SUITE #300 ENGLEWOOD CO 80110 (720) 560-6307 WWW.VALHALLAENGINEERING.COM</div></div> <div>VEG 4.11</div>		<div>STAMP:</div> <div></div>		<div><div>U.S. Department of Veterans Affairs</div></div>		<div>Drawing Title</div> <div>HARDSCAPE SURFACING & SITE FURNISHINGS DETAILS</div> <div>Approved: Project Director</div>		<div>Phase</div> <div>100% CONSTRUCTION DOCUMENTS</div>		<div>Project Title</div> <div>OUTPATIENT MENTAL HEALTH / EDUCATION ADDITION</div> <div>Location</div> <div><div>Issue Date</div><div>08/05/2020</div><div>Checked</div><div>bgb</div><div>Drawn</div><div>bdr</div></div>		<div>Project Number</div> <div>436-114</div> <div>Building Number</div> <div>173</div> <div>Drawing Number</div> <div>L-120-P1</div>	
---------	--	-------	--	--	--	---	--	--	--	--	--	--	--	---	--	---	--	--	--

VA FORM 08-6231

12

1

2

3

4

5

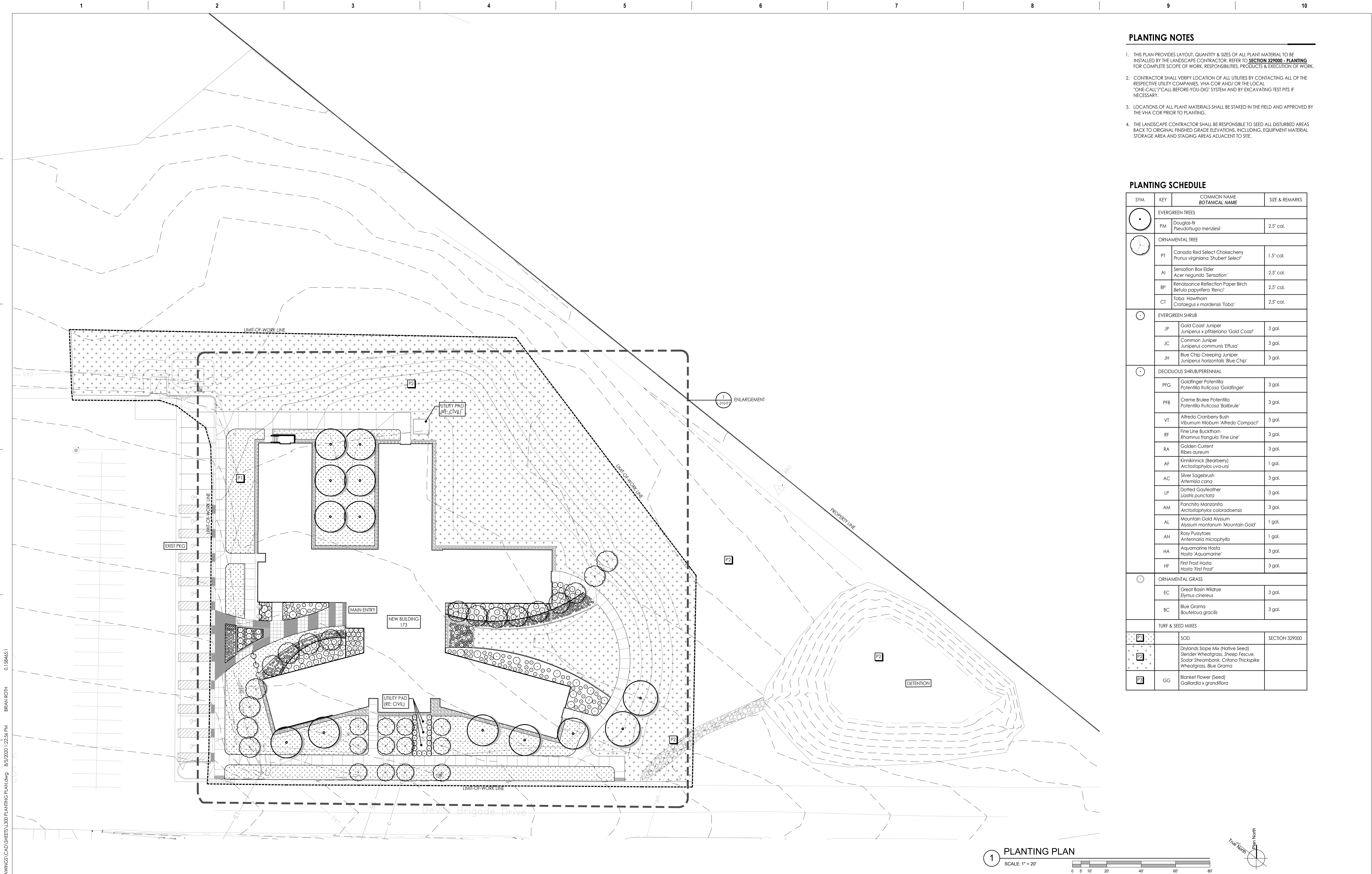
6

7

8

9

10



- PLANTING NOTES**
1. THIS PLAN PROVIDES LAYOUT, QUANTITY & SIZES OF ALL PLANT MATERIAL TO BE INSTALLED BY THE LANDSCAPE CONTRACTOR. REFER TO **SECTION 329000 - PLANTING** FOR COMPLETE SCOPE OF WORK, RESPONSIBILITIES, PRODUCTS & EXECUTION OF WORK.
 2. CONTRACTOR SHALL VERIFY LOCATION OF ALL UTILITIES BY CONTACTING ALL OF THE RESPECTIVE UTILITY COMPANIES, VIA COR AND/OR THE LOCAL "ONE-CALL"/"CALL-BEFORE-YOU-DIG" SYSTEM AND BY EXCAVATING TEST PITS IF NECESSARY.
 3. LOCATIONS OF ALL PLANT MATERIALS SHALL BE STAKED IN THE FIELD AND APPROVED BY THE VHA COR PRIOR TO PLANTING.
 4. THE LANDSCAPE CONTRACTOR SHALL BE RESPONSIBLE TO SEED ALL DISTURBED AREAS BACK TO ORIGINAL FINISHED GRADE ELEVATIONS, INCLUDING, EQUIPMENT MATERIAL STORAGE AREA AND STAGING AREAS ADJACENT TO SITE.

SYM.	KEY	COMMON NAME BOTANICAL NAME	SIZE & REMARKS
EVERGREEN TREES			
PM	Douglas-fir <i>Pseudotsuga menziesii</i>		2.5" cal.
ORNAMENTAL TREE			
PT	Canada Red Select Chokecherry <i>Prunus virginiana 'Shubert Select'</i>		1.5" cal.
AI	Sensation Box Elder <i>Acer negundo 'Sensation'</i>		2.5" cal.
BP	Rendissance Reflection Paper Birch <i>Betula papyrifera 'Rencia'</i>		2.5" cal.
CT	Taba Hawthorn <i>Crataegus x mordenis 'Taba'</i>		2.5" cal.
EVERGREEN SHRUB			
JP	Gold Coast Juniper <i>Juniperus x pfizeriana 'Gold Coast'</i>		3 gal.
JC	Common Juniper <i>Juniperus communis 'Effusa'</i>		3 gal.
JH	Blue Chip Creeping Juniper <i>Juniperus horizontalis 'Blue Chip'</i>		3 gal.
DECIDUOUS SHRUB/PERENNIAL			
PFG	Goldfinger Potentilla <i>Potentilla fruticosa 'Goldfinger'</i>		3 gal.
PFB	Creme Brulee Potentilla <i>Potentilla fruticosa 'Bailbrule'</i>		3 gal.
VT	Alfredo Cranberry Bush <i>Viburnum trilobum 'Alfredo Compact'</i>		3 gal.
RF	Fine Line Buckthorn <i>Rhamnus frangula 'Fine Line'</i>		3 gal.
RA	Golden Currant <i>Ribes aureum</i>		3 gal.
AF	Kinnikinnick (Bearberry) <i>Arctostaphylos uva-ursi</i>		1 gal.
AC	Silver Sagebrush <i>Artemisia cana</i>		3 gal.
LP	Dotted Gayleather <i>Liatris punctata</i>		3 gal.
AM	Panchito Manzanita <i>Arctostaphylos californica</i>		3 gal.
AL	Mountain Gold Alyssum <i>Alyssum montanum 'Mountain Gold'</i>		1 gal.
AN	Rosy Pussyloes <i>Antennaria microphylla</i>		1 gal.
HA	Aquamarine Hosta <i>Hosta 'Aquamarine'</i>		3 gal.
HF	First Frost Hosta <i>Hosta 'First Frost'</i>		3 gal.
ORNAMENTAL GRASS			
EC	Great Basin Wildrye <i>Elymus cinereus</i>		3 gal.
BC	Blue Grama <i>Bouteloua gracilis</i>		3 gal.
TURF & SEED MIXES			
P1	SOD		SECTION 329000
P2	Drylands Slope Mix (Native Seed) Slender Wheatgrass, Sheep Fescue, Sodas Streambank, Citana Thicksipke Wheatgrass, Blue Grama		
P3	GG	Blanket Flower (Seed) Gallardia x grandiflora	

1 PLANTING PLAN
SCALE: 1" = 20'

Issued:

Date:

CONSULTANTS:

HOEFER WYSOCKI
THAO TONKAMPY CREEK PARKWAY SUITE 400, LEANWOOD, KANSAS 66211

LAND3
750 W HAMPTON AVE
SUITE #300
ENGLEWOOD CO 80110
(720) 550-6307
WWW.LAND3ENGINEERING.COM

Protection
Engineering
CONSULTANTS

JIRSA

HEDRICK
Structural Engineers

ARCHITECT/ENGINEERS:

VALHALLA
ENGINEERING
GROUP, LLC
750 W HAMPTON AVE
SUITE #300
ENGLEWOOD CO 80110
(720) 550-6307
WWW.VALHALLAENGINEERING.COM

STAMP:

U.S. Department
of Veterans Affairs

Drawing Title

PLANTING PLAN

Approved: Project Director

Phase

100% CONSTRUCTION
DOCUMENTS

Project Title

OUTPATIENT MENTAL HEALTH /
EDUCATION ADDITION

Issue Date

08/05/2020

Checked

bgb

Drawn

bdr

Project Number

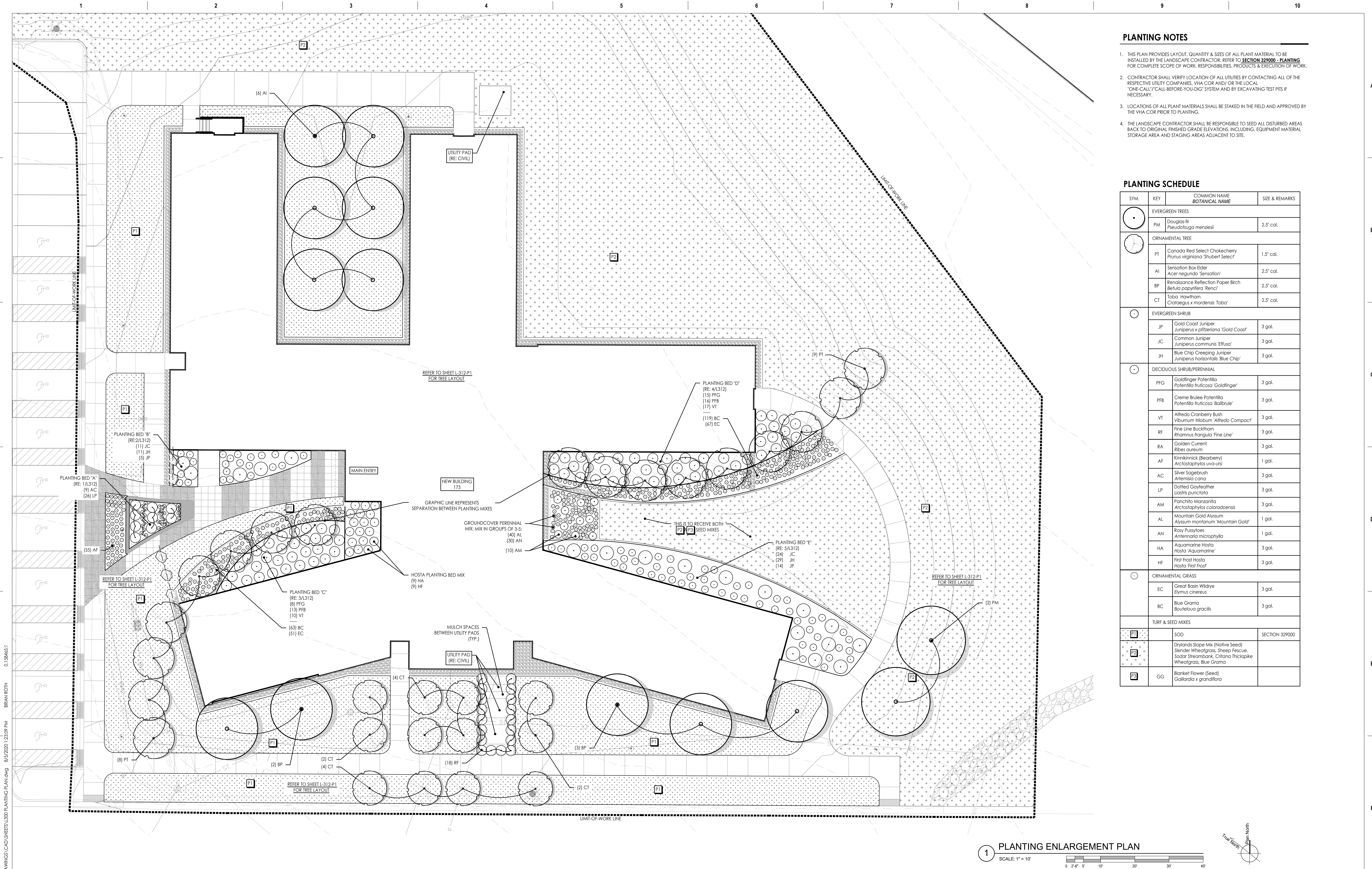
436-114

Building Number

173

Drawing Number

L-300-P1

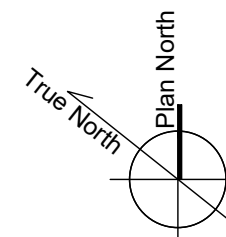
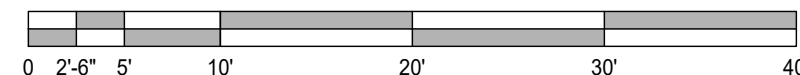


- PLANTING NOTES**
1. THIS PLAN PROVIDES LAYOUT, QUANTITY & SIZES OF ALL PLANT MATERIAL TO BE INSTALLED BY THE LANDSCAPE CONTRACTOR. REFER TO **SECTION 329000 - PLANTING** FOR COMPLETE SCOPE OF WORK, RESPONSIBILITIES, PRODUCTS & EXECUTION OF WORK.
 2. CONTRACTOR SHALL VERIFY LOCATION OF ALL UTILITIES BY CONTACTING ALL OF THE RESPECTIVE UTILITY COMPANIES, VHA COR AND/OR THE LOCAL "ONE-CALL"/"CALL-BEFORE-YOU-DIG" SYSTEM AND BY EXCAVATING TEST PITS IF NECESSARY.
 3. LOCATIONS OF ALL PLANT MATERIALS SHALL BE STAKED IN THE FIELD AND APPROVED BY THE VHA COR PRIOR TO PLANTING.
 4. THE LANDSCAPE CONTRACTOR SHALL BE RESPONSIBLE TO SEED ALL DISTURBED AREAS BACK TO ORIGINAL FINISHED GRADE ELEVATIONS, INCLUDING, EQUIPMENT MATERIAL STORAGE AREA AND STAGING AREAS ADJACENT TO SITE.

PLANTING SCHEDULE			
SYM.	KEY	COMMON NAME BOTANICAL NAME	SIZE & REMARKS
EVERGREEN TREES			
PM	Douglas-fir <i>Pseudotsuga menziesii</i>		2.5" cal.
ORNAMENTAL TREE			
PT	Canada Red Select Chokecherry <i>Prunus virginiana 'Shubert Select'</i>		1.5" cal.
AI	Sensation Box Elder <i>Acer negundo 'Sensation'</i>		2.5" cal.
BP	Rendissance Reflection Paper Birch <i>Betula papyrifera 'Rencia'</i>		2.5" cal.
CT	Taba Hawthorn <i>Crataegus x mordenis 'Taba'</i>		2.5" cal.
EVERGREEN SHRUB			
JP	Gold Coast Juniper <i>Juniperus x pfizeriana 'Gold Coast'</i>		3 gal.
JC	Common Juniper <i>Juniperus communis 'Eflusa'</i>		3 gal.
JH	Blue Chip Creeping Juniper <i>Juniperus horizontalis 'Blue Chip'</i>		3 gal.
DECIDUOUS SHRUB/PERENNIAL			
PFG	Goldfinger Potentilla <i>Potentilla fruticosa 'Goldfinger'</i>		3 gal.
PFB	Crème Brûlée Potentilla <i>Potentilla fruticosa 'Bailbrule'</i>		3 gal.
VT	Alfreda Cranberry Bush <i>Viburnum trilobum 'Alfreda Compact'</i>		3 gal.
RF	Fine Line Buckthorn <i>Rhamnus frangula 'Fine Line'</i>		3 gal.
RA	Golden Currant <i>Ribes aureum</i>		3 gal.
AF	Kinnikinnick (Bearberry) <i>Arctostaphylos uva-ursi</i>		1 gal.
AC	Silver Sagebrush <i>Artemisia cana</i>		3 gal.
LP	Dotted Gayleather <i>Liatris punctata</i>		3 gal.
AM	Panchito Manzanita <i>Arctostaphylos coloradoensis</i>		3 gal.
AL	Mountain Gold Alyssum <i>Alyssum montanum 'Mountain Gold'</i>		1 gal.
AN	Rosy Pussyloes <i>Antennaria microphylla</i>		1 gal.
HA	Aquamarine Hosta <i>Hosta 'Aquamarine'</i>		3 gal.
HF	First Frost Hosta <i>Hosta 'First Frost'</i>		3 gal.
ORNAMENTAL GRASS			
EC	Great Basin Wildrye <i>Elymus cinereus</i>		3 gal.
BC	Blue Grama <i>Bouteloua gracilis</i>		3 gal.
TURF & SEED MIXES			
P1	SOD		SECTION 329000
P2	Drylands Slope Mix (Native Seed) Slender Wheatgrass, Sheep Fescue, Sodas Streambank, Citana Thickspike Wheatgrass, Blue Grama		
P3	GG	Blanket Flower (Seed) <i>Gallardia x grandiflora</i>	

1 PLANTING ENLARGEMENT PLAN

SCALE: 1" = 10'



CONSULTANTS:		ARCHITECT/ENGINEERS:		STAMP:		Drawing Title		Phase		Project Title		Project Number	
						PLANTING ENLARGEMENT PLAN		100% CONSTRUCTION DOCUMENTS		OUTPATIENT MENTAL HEALTH / EDUCATION ADDITION		436-114	
						Approved: Project Director				Location		Building Number	
Issued:		Date:		VEG 4.11						Issue Date		Checked	
										08/05/2020		bgb	
										Drawn		bdr	
												Drawing Number	
												L-310-P1	

LAYOUT NOTES

1. WRITTEN DIMENSIONS SHALL PREVAIL OVER SCALED DIMENSION

A

B

C

D

E

F

A

B

C

D

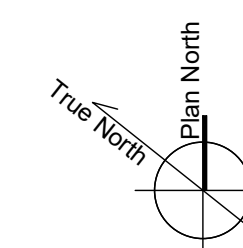
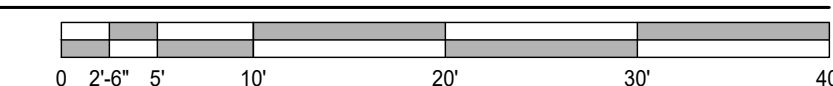
E

F

GA Archive 2019 1230 VA FOR HARRISON DRAWINGS CAD SHEET 1300 PLANTING PLAN.dwg 8/5/2020 12:31 PM BBAN ROTH 01584651

1 PLANTING LAYOUT PLAN

SCALE: 1" = 10'



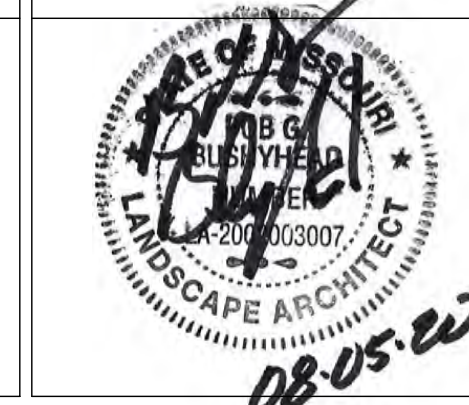
CONSULTANTS:



ARCHITECT/ENGINEERS:



STAMP:



Drawing Title
PLANTING LAYOUT PLAN

Approved: Project Director

Phase
100% CONSTRUCTION DOCUMENTS

Project Title
OUTPATIENT MENTAL HEALTH / EDUCATION ADDITION

Location
Issue Date: 08/05/2020
Checked: bgb
Drawn: bdr

Project Number: 436-114
Building Number: 173
Drawing Number: L-311-P1

LAYOUT NOTES

1. WRITTEN DIMENSIONS SHALL PREVAIL OVER SCALED DIMENSION

JP - SEA GREEN JUNIPER
 JC - COMMON JUNIPER
 JH - CREEPING JUNIPER

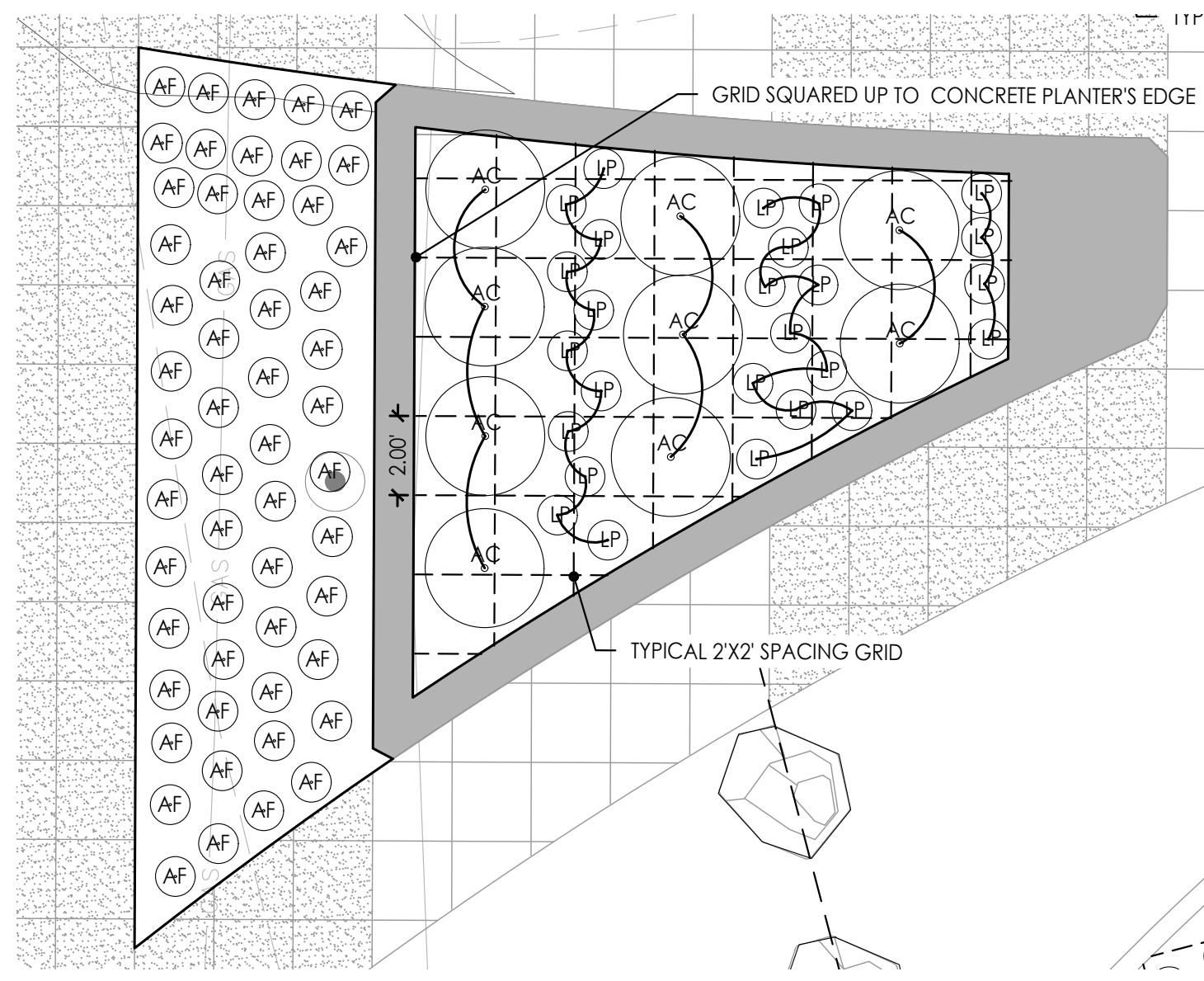
 PFG - GOLDFINGER POTENTILLA
 PFB - CREME BRULEE POTENTILLA
 SA - COMMON SNOWBERRY

 AF - FRINGED SAGE BRUSH

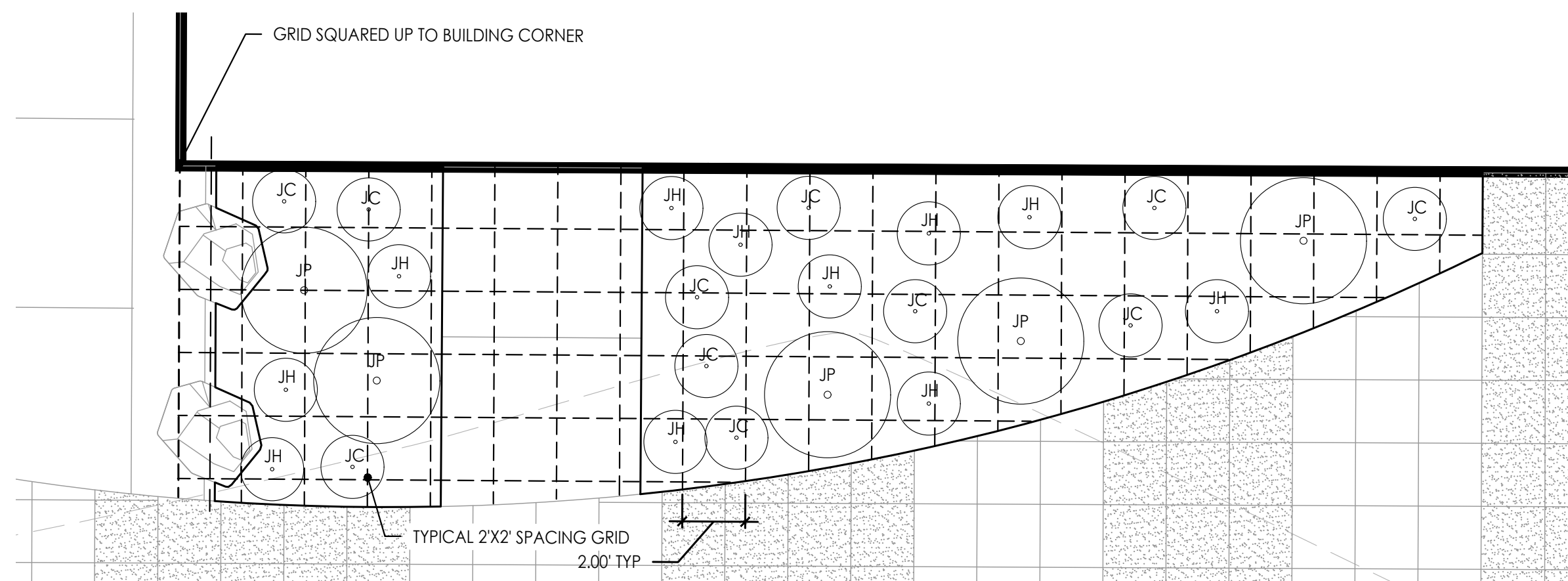
 AC - SILVER SAGEBRUSH
 LP - DOTTED GAYFEATHER

 EC - GREAT BASIN WILDRIE
 BC - BLUE GRAMA

 REFER TO L300 FOR FULL PLANTING SCHEDULE



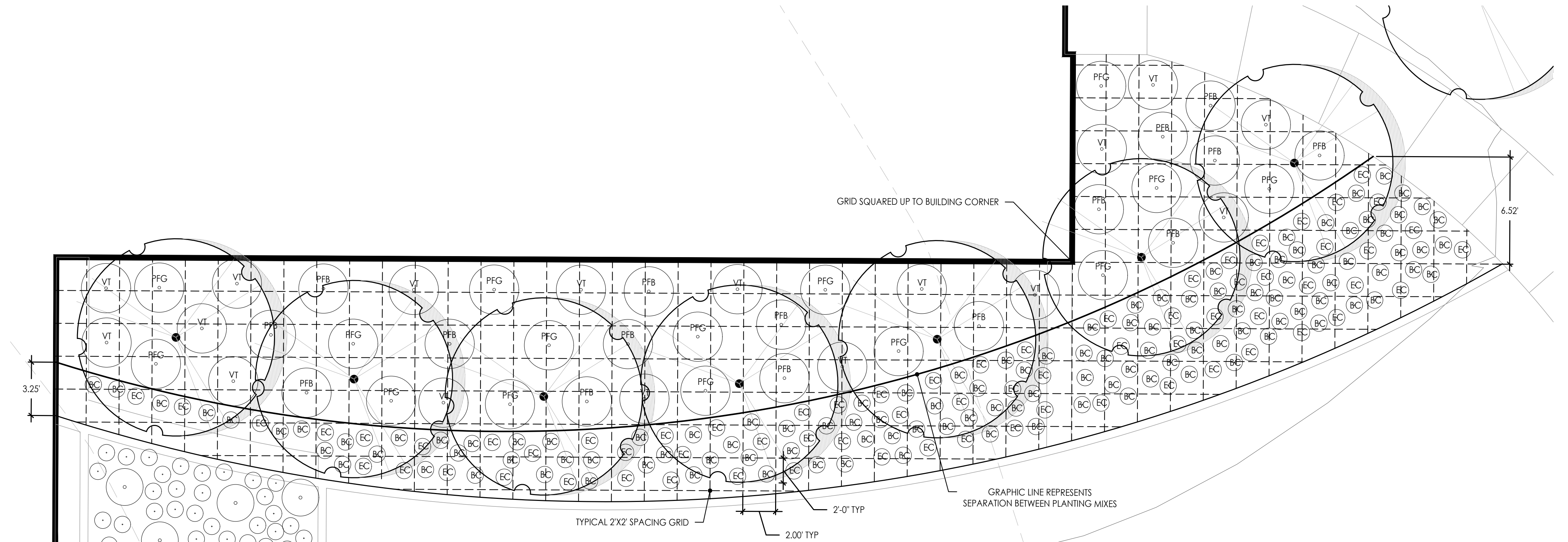
1 PLANTING BED "A"



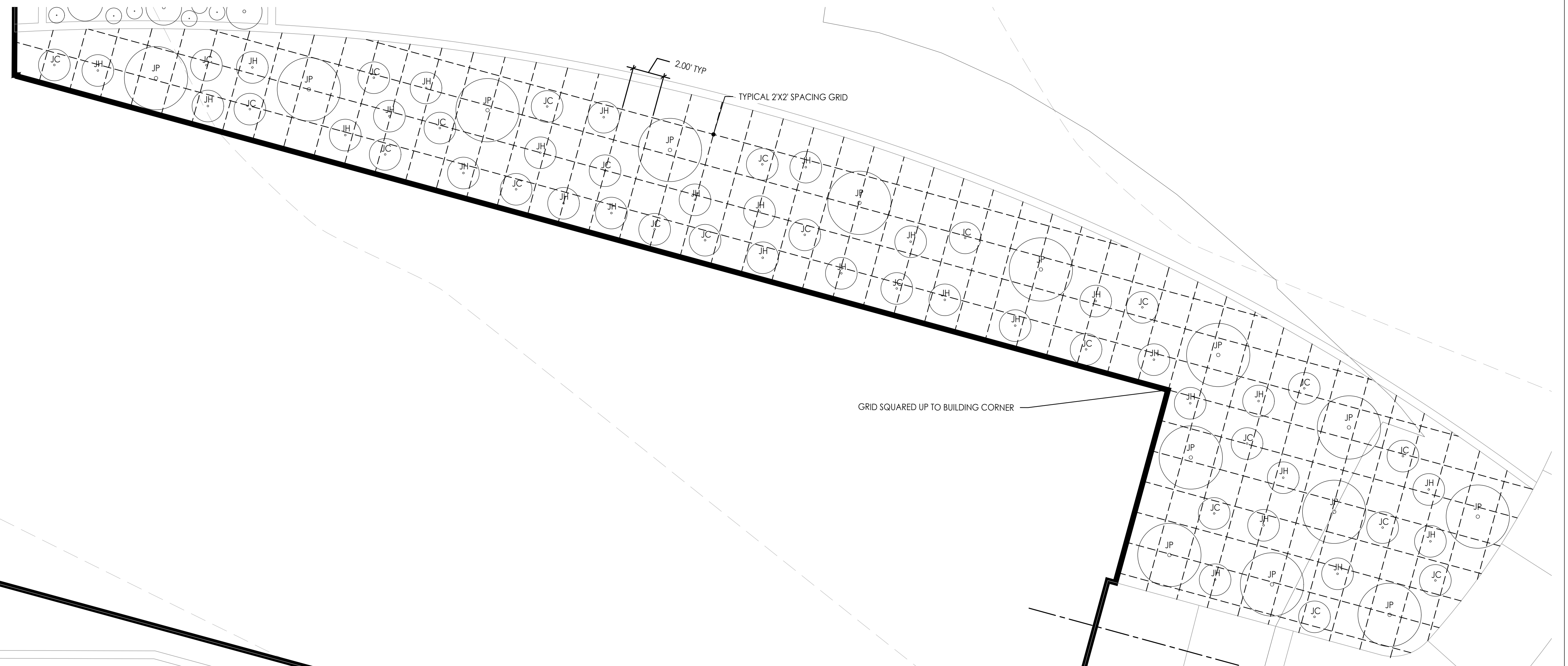
2 PLANTING BED "B"



3 PLANTING BED "C"



4 PLANTING BED "D"



5 PLANTING BED "E"

CONSULTANTS:



ARCHITECT/ENGINEERS:



STAMP:



U.S. Department
of Veterans Affairs

Drawing Title
PLANTING SHRUB LAYOUT PLAN

Approved: Project Director

Phase	100% CONSTRUCTION DOCUMENTS
-------	-----------------------------

Project Title	OUTPATIENT MENTAL HEALTH / EDUCATION ADDITION
---------------	--

	Location

08/05/2020

bqb

bdr

Project Number
436-114

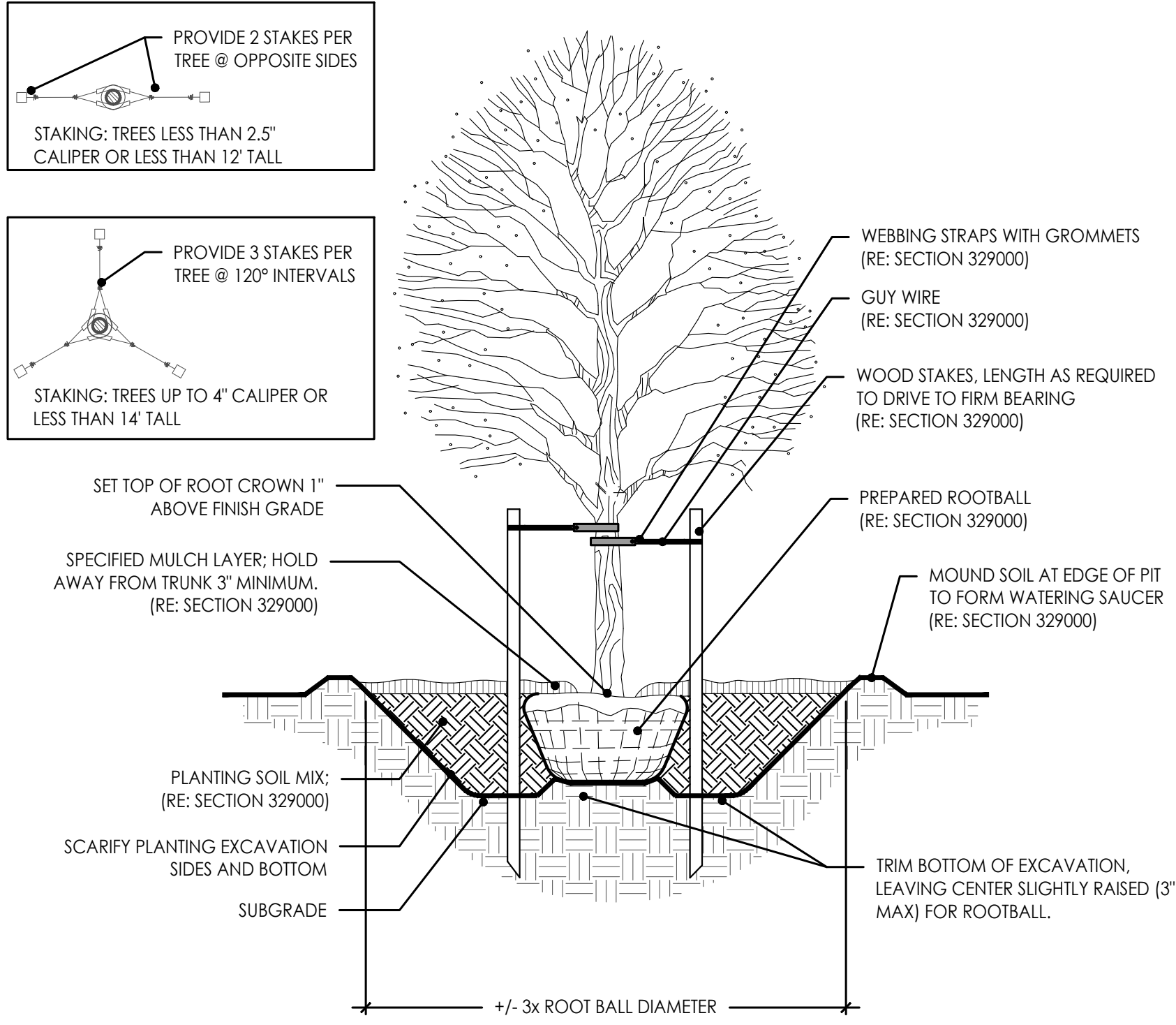
Iding Number

173

Following Number

L_312_P1

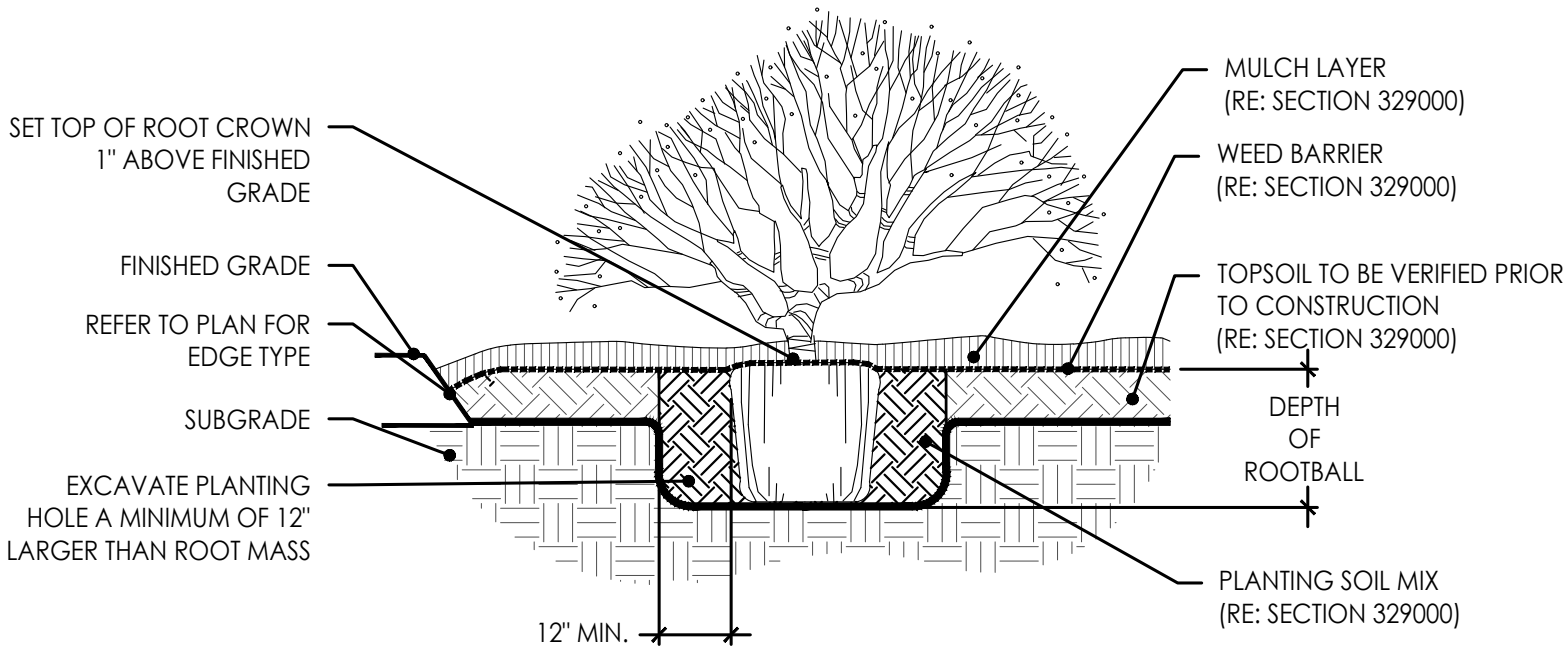
L-512-F-1



1

TREE DETAIL

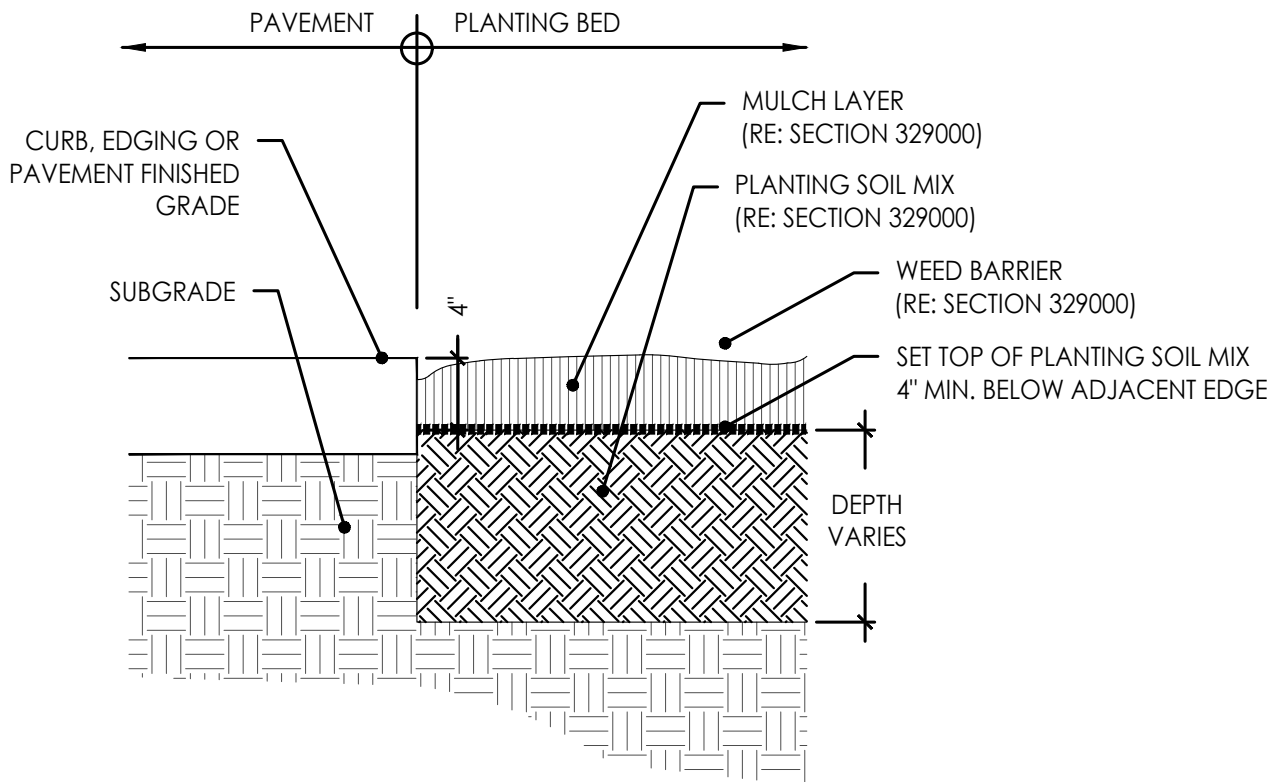
Scale: N.T.S.



2

SHRUB DETAIL

Scale: N.T.S.



3

PLANTING BED @ CONCRETE WALK

Scale: N.T.S.

Issued:	Date:

CONSULTANTS:

HOEFER WYSOCKI
THAO TOHANAMNYE CREEK PARKWAY SUITE 400, LEANWOOD, KANSAS 66211

LAND3
PLANNING

Protection
Engineering
CONSULTANTS

JIRSA HEDRICK
Structural Engineers

ARCHITECT/ENGINEERS:

VALHALLA
ENGINEERING
GROUP, LLC

750 W HAMPDEN AVE
SUITE #300
ENGLEWOOD CO 80110
(720) 550-6307
WWW.VALHALLAENGINEERING.COM

VEG 4.11

STAMP:

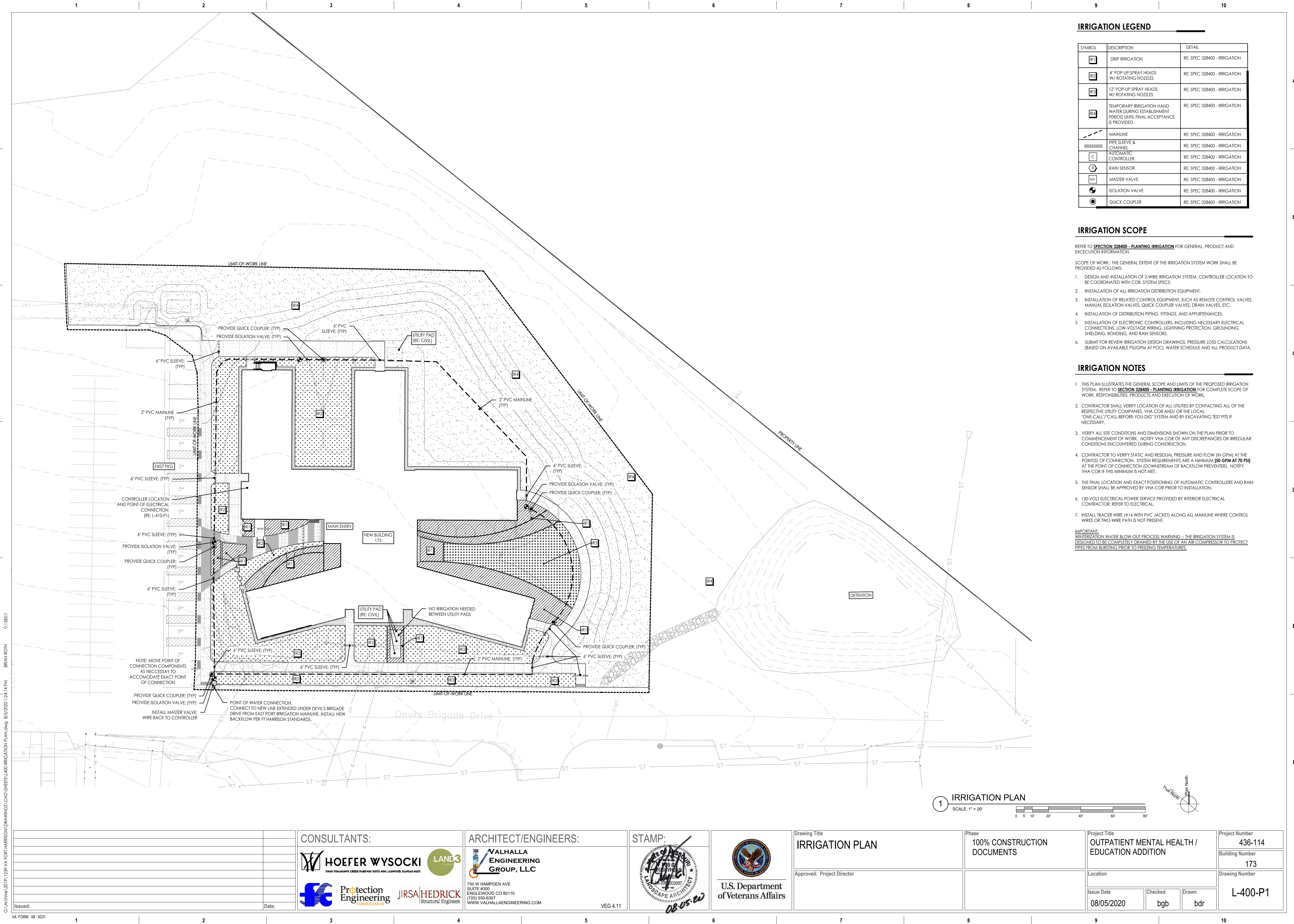
U.S. Department
of Veterans Affairs

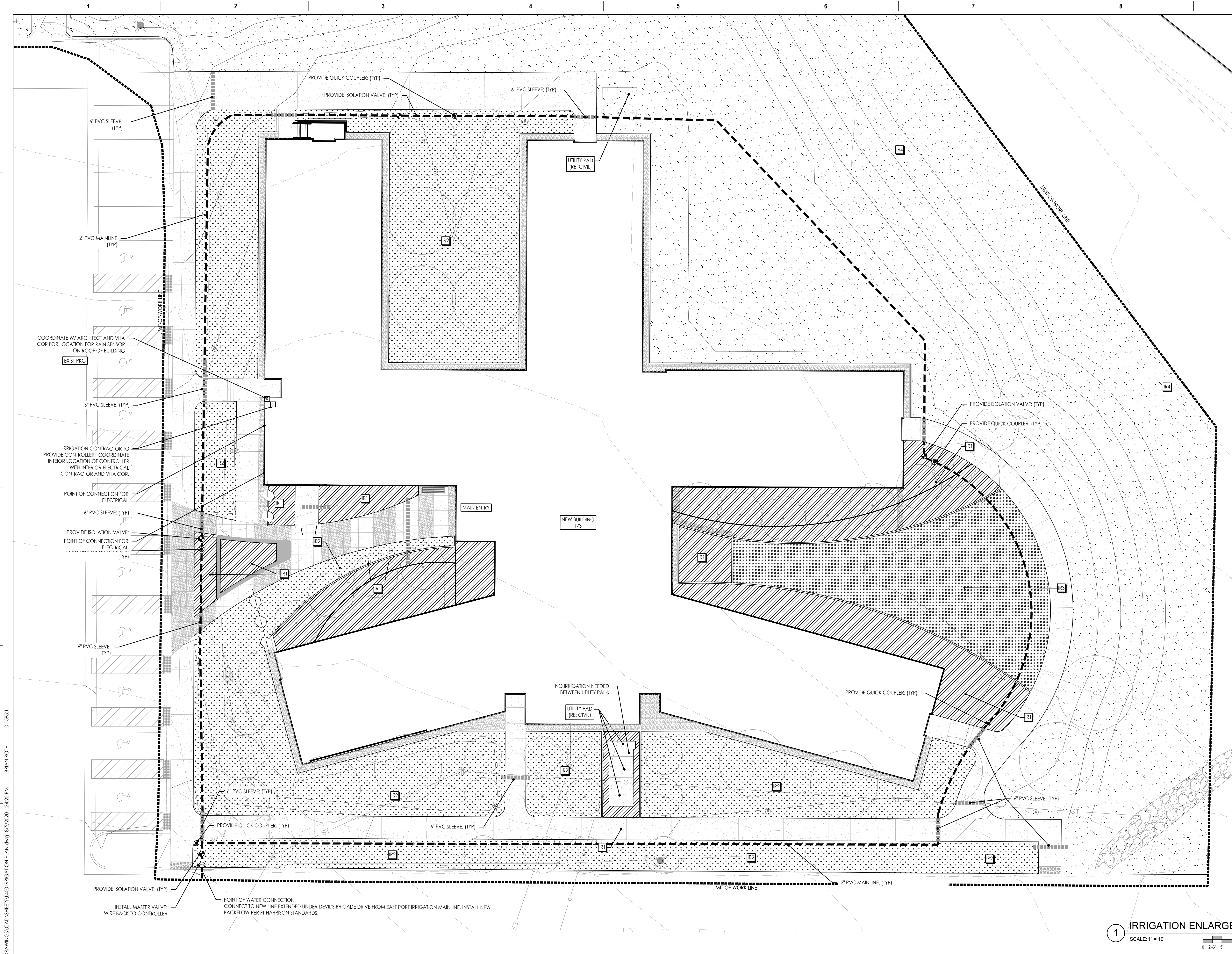
Drawing Title
PLANTING DETAILS
Approved: Project Director



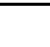

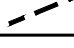

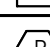




Phase
100% CONSTRUCTION DOCUMENTS

Project Title
OUTPATIENT MENTAL HEALTH / EDUCATION ADDITION
Location
Issue Date
08/05/2020
Checked
bgb
Drawn
bdr

Project Number
436-114
Building Number
173
Drawing Number
L-320-P1





IRRIGATION LEGEND		
SYMBOL	DESCRIPTION	DETAIL
	DRIP IRRIGATION	RE: SPEC 328400 - IRRIGATION
	4" POP-UP SPRAY HEADS W/ ROTATING NOZZLES	RE: SPEC 328400 - IRRIGATION
	12" POP-UP SPRAY HEADS W/ ROTATING NOZZLES	RE: SPEC 328400 - IRRIGATION
	TEMPORARY IRRIGATION HAND WATER DURING ESTABLISHMENT PERIOD UNTIL FINAL ACCEPTANCE IS PROVIDED	RE: SPEC 328400 - IRRIGATION
	MAINLINE	RE: SPEC 328400 - IRRIGATION
	PIPE SLEEVE & CHANNEL	RE: SPEC 328400 - IRRIGATION
	AUTOMATIC CONTROLLER	RE: SPEC 328400 - IRRIGATION
	RAIN SENSOR	RE: SPEC 328400 - IRRIGATION
	MASTER VALVE	RE: SPEC 328400 - IRRIGATION
	ISOLATION VALVE	RE: SPEC 328400 - IRRIGATION
	QUICK COUPLER	RE: SPEC 328400 - IRRIGATION

- IRRIGATION SCOPE**
- REFER TO **SECTION 328400 - PLANTING IRRIGATION** FOR GENERAL PRODUCT AND EXECUTION INFORMATION.
- SCOPE OF WORK: THE GENERAL EXTENT OF THE IRRIGATION SYSTEM WORK SHALL BE PROVIDED AS FOLLOWS:
- DESIGN AND INSTALLATION OF 2-WIRE IRRIGATION SYSTEM. CONTROLLER LOCATION TO BE COORDINATED WITH COR. SYSTEM SPECS.
 - INSTALLATION OF ALL IRRIGATION DISTRIBUTION EQUIPMENT.
 - INSTALLATION OF RELATED CONTROL EQUIPMENT, SUCH AS REMOTE CONTROL VALVES, MANUAL ISOLATION VALVES, QUICK COUPLER VALVES, DRAIN VALVES, ETC.
 - INSTALLATION OF DISTRIBUTION PIPING, FITTINGS, AND APPURTENANCES.
 - INSTALLATION OF ELECTRONIC CONTROLLERS, INCLUDING NECESSARY ELECTRICAL CONNECTIONS, LOW-VOLTAGE WIRING, LIGHTNING PROTECTION, GROUNDING, SHIELDING, BONDING, AND RAIN SENSORS.
 - SUBMIT FOR REVIEW IRRIGATION DESIGN DRAWINGS, PRESSURE LOSS CALCULATIONS (BASED ON AVAILABLE PSI/GPM AT POC), WATER SCHEDULE AND ALL PRODUCT DATA.

- IRRIGATION NOTES**
- THIS PLAN ILLUSTRATES THE GENERAL SCOPE AND LIMITS OF THE PROPOSED IRRIGATION SYSTEM. REFER TO **SECTION 328400 - PLANTING IRRIGATION** FOR COMPLETE SCOPE OF WORK, RESPONSIBILITIES, PRODUCTS AND EXECUTION OF WORK.
 - CONTRACTOR SHALL VERIFY LOCATION OF ALL UTILITIES BY CONTACTING ALL OF THE RESPECTIVE UTILITY COMPANIES, VHA COR AND/OR THE LOCAL "ONE-CALL" CALL-BEFORE-YOU-DIG SYSTEM AND BY EXCAVATING TEST PITS IF NECESSARY.
 - VERIFY ALL SITE CONDITIONS AND DIMENSIONS SHOWN ON THE PLAN PRIOR TO COMMENCEMENT OF WORK. NOTIFY VHA COR OF ANY DISCREPANCIES OR IRREGULAR CONDITIONS ENCOUNTERED DURING CONSTRUCTION.
 - CONTRACTOR TO VERIFY STATIC AND RESIDUAL PRESSURE AND FLOW (IN GPM) AT THE POINT(S) OF CONNECTION. SYSTEM REQUIREMENTS ARE A MINIMUM **[50 GPM AT 70 PSI]** AT THE POINT OF CONNECTION (DOWNSTREAM OF BACKFLOW PREVENTER). NOTIFY VHA COR IF THIS MINIMUM IS NOT MET.
 - THE FINAL LOCATION AND EXACT POSITIONING OF AUTOMATIC CONTROLLERS AND RAIN SENSOR SHALL BE APPROVED BY VHA COR PRIOR TO INSTALLATION.
 - 120-VOLT ELECTRICAL POWER SERVICE PROVIDED BY INTERIOR ELECTRICAL CONTRACTOR. REFER TO ELECTRICAL.
 - INSTALL TRACER WIRE (#14 WITH PVC JACKET) ALONG ALL MAINLINE WHERE CONTROL WIRES OR TWO-WIRE PATH IS NOT PRESENT.
- IMPORTANT:**
WINTERIZATION WATER BLOW-OUT PROCESS WARNING – THE IRRIGATION SYSTEM IS DESIGNED TO BE COMPLETELY DRAINED BY THE USE OF AN AIR COMPRESSOR TO PROTECT PIPES FROM BURSTING PRIOR TO FREEZING TEMPERATURES.

1

IRRIGATION ENLARGEMENT PLAN

SCALE: 1" = 10'

0

2'-0"

5'

10'

20'

30'

40'

True North

North

Issued:

Date:

CONSULTANTS:

HOEFER WYSOCKI
11400 TOWHAMPTON CREEK PARKWAY SUITE 400, LEAWOOD, KANSAS 66211

LAND 3
PLUMBING

Protection
Engineering
CONSULTANTS

JIRSA HEDRICK
Structural Engineers

ARCHITECT/ENGINEERS:

VALHALLA
ENGINEERING
GROUP, LLC

750 W HAMPDEN AVE
SUITE #300
ENGLEWOOD CO 80110
(720) 550-6307
WWW.VALHALLAENGINEERING.COM

STAMP:

08-05-20

U.S. Department
of Veterans Affairs

Drawing Title

IRRIGATION ENLARGEMENT PLAN

Approved: Project Director

Phase

100% CONSTRUCTION
DOCUMENTS

Project Title

OUTPATIENT MENTAL HEALTH /
EDUCATION ADDITION

Location

Issue Date

08/05/2020

Checked

bgb

Drawn

bdr

Project Number

436-114

Building Number

173

Drawing Number

L-410-P1