



**1720 PEACHTREE RD. N.W.
SUITE 716
ATLANTA, GEORGIA 30309**

National Forests in North Carolina Appalachian Ranger District Mars Hill, North Carolina

DIRECTOR OF ENGINEERING

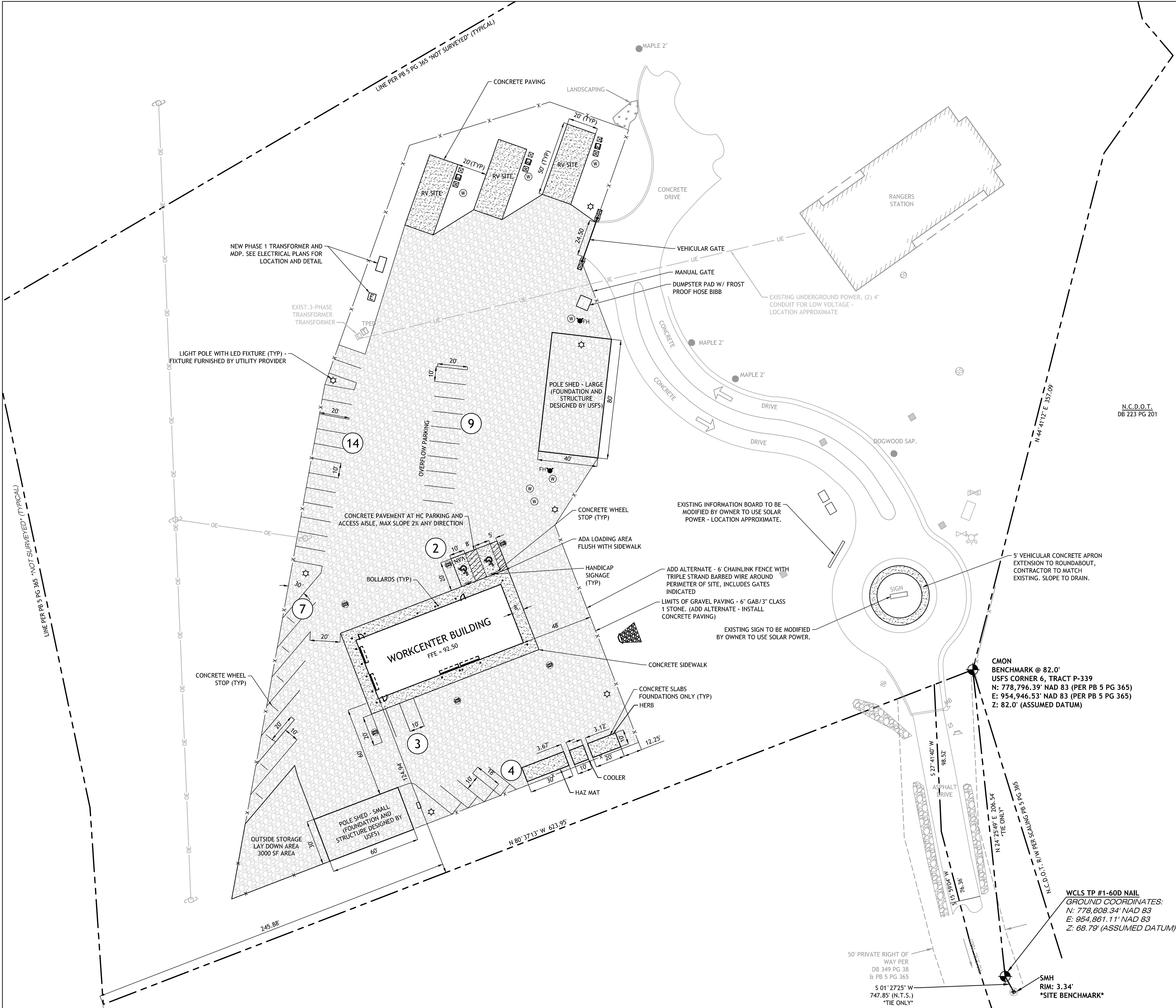
Sheet List				
Sheet Number	Sheet Name	Sheet Issue Date	Current Revision Date	Current Revision
A3.1	INTERIOR ELEVATIONS	04/18/16		
A4.1	DETAILS	04/18/16		
A4.2	DETAILS	04/18/16		
A4.3	DETAILS	04/18/16		
A4.4	MILLWORK	04/18/16		
A4.5	INTERIOR DETAILS	04/18/16		
STRUCTURE				
S1.0	GENERAL NOTES	04/18/16		
S1.1	FOUNDATION PLAN	04/18/16		
S1.2	MEZZANINE FRAMING PLAN	04/18/16		
S1.3	ROOF FRAMING PLAN	04/18/16		
S3.1	FOUNDATION SECTIONS & DETAILS	04/18/16		
S4.1	FRAMING SECTIONS & DETAILS	04/18/16		
MECHANICAL				
M0.1	MECHANICAL LEGEND AND SCHEDULES	04/18/16		
M0.2	MECHANICAL DETAILS	04/18/16		
M1.1	HVAC FLOOR PLAN	04/18/16		
M1.2	HVAC MEZZANINE FLOOR PLAN	04/18/16		
PLUMBING				
P0.1	PLUMBING LEGEND, SCHEDULES, AND NOTES	04/18/16		
P1.1	PLUMBING SANITARY & DOMESTIC WATER FLOOR PLANS	04/18/16		
P1.2	PLUMBING VENT, DOMESTIC WATER & GAS - MEZZANINE	04/18/16		
P3.1	PLUMBING SANITARY & DOMESTIC WATER RISER DIAGRAM	04/18/16		
P4.1	PLUMBING DETAILS	04/18/16		
ELECTRICAL				
E0.1	ELECTRICAL SYMBOLS LEGEND, ABBREVIATIONS & GENERAL NOTES	04/18/16		
E0.2	ELECTRICAL SITE PLAN	04/18/16		
E0.3	ELECTRICAL ONE LINE DIAGRAM, SCHEDULES, LEGEND & DETAILS	04/18/16		
E0.4	ELECTRICAL SCHEDULES AND DETAILS	04/18/16		
E0.5	ELECTRICAL PANEL SCHEDULES, MECHANICAL EQUIPMENT ELECTRICAL CONNECTION SCHEDULE & NOTES	04/18/16		
E0.6	ELECTRICAL DETAILS	04/18/16		
E0.7	ELECTRICAL DETAILS	04/18/16		
E0.8	ELECTRICAL DETAILS	04/18/16		
E1.1	ELECTRICAL POWER & SYSTEMS PLAN - GROUND LEVEL	04/18/16		
E2.1	ELECTRICAL LIGHTING PLAN - GROUND & MEZZANINE LEVELS	04/18/16		

632 MANOR ROAD
MARS HILL, NC 28754

[illegible]

DRAWN: SDA
CHECKED: SDA

G0.0



LONG
ENGINEERING, INC.

2550 Heritage Ct, Suite 250
Atlanta, Georgia 30339
Tel 770.951.2495
Fax 770.951.2496
www.longeng.com

SITE DATA NOTES

PROJECT ADDRESS: 632 MANOR ROAD, MARS HILL, NC
MARS HILL, NORTH CAROLINA 28754

OWNER: U.S. FOREST SERVICE
160 ZILICOA ST., SUITE A
ASHEVILLE, NC 28801

ARCHITECT: SMITH DALIA ARCHITECTS
621 NORTH AVENUE NE, SUITE C-140
ATLANTA, GEORGIA 30308-2805
404-892-2443

ENGINEER: LONG ENGINEERING, INC.
2550 HERITAGE COURT
SUITE 100
ATLANTA, GEORGIA 30339
770-951-2495

CONTACT PERSON: BARRY JONES 828-231-3575

ZONING: R-A

THE APPROXIMATE SITE AREA IS 9.02 ACRES.
THE APPROXIMATE DISTURBED AREA IS 2.63 ACRES.

PARKING SUMMARY:

	STANDARD	HANDICAP	TOTAL
PROPOSED SURFACE LOT	37	2	39

TOTAL REQUIRED HANDICAP PARKING CALCULATION:
H/C PARKING = 2

TOTAL PROPOSED HANDICAP PARKING CALCULATION:
H/C PARKING = 2

PAVING LEGEND

	NEW GRAVEL
	NEW CONCRETE PAVING

U.S. FOREST SERVICE
SOUTHERN REGION

RANDY L. WARBINGTON
REGIONAL ENGINEER

APPALACHIAN WORK CENTER
632 MANOR ROAD
MARS HILL, NC 28754

DATE	CONS.	DOCS	DESCRIPTION
05/27/15	1		

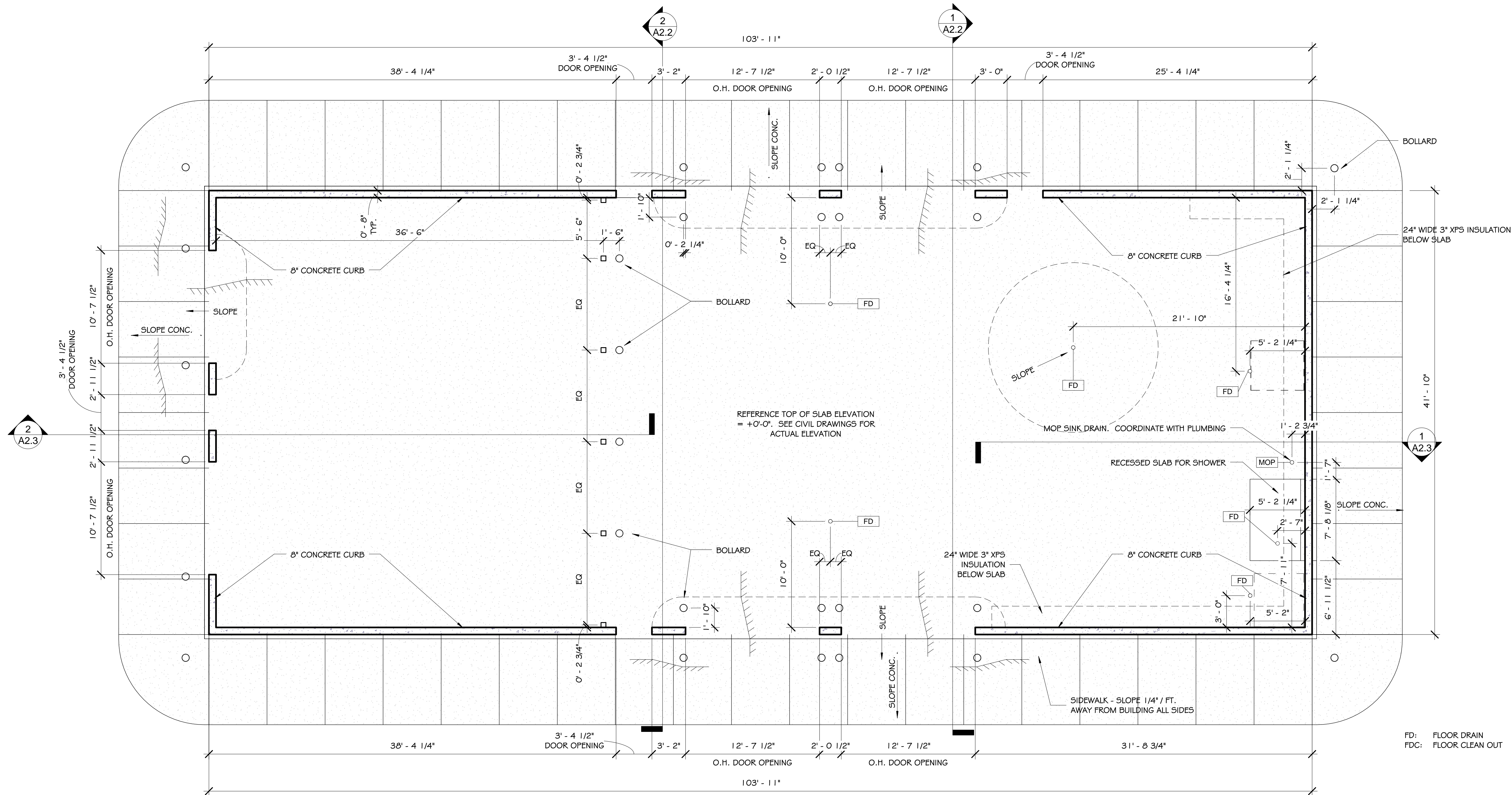
PROJECT: 14060

DRAWN: BH
CHECKED: AP

Sheet Title
SITE PLAN

C3.0

1 SLAB PLAN
3/16" = 1'-0"



SMITH
DALIA
ARCHITECTS, LLC
621 NORTH AVENUE, NE
SUITE C-140
ATLANTA, GA 30308
404.892.2443 voice
404.892.2470 facsimile
mail@smithdalia.com



U.S. FOREST SERVICE
SOUTHERN REGION

PABLO CRUZ, P.E.
DIRECTOR OF ENGINEERING

APPALACHIAN WORK CENTER
632 MANOR ROAD
MARS HILL, NC 28754

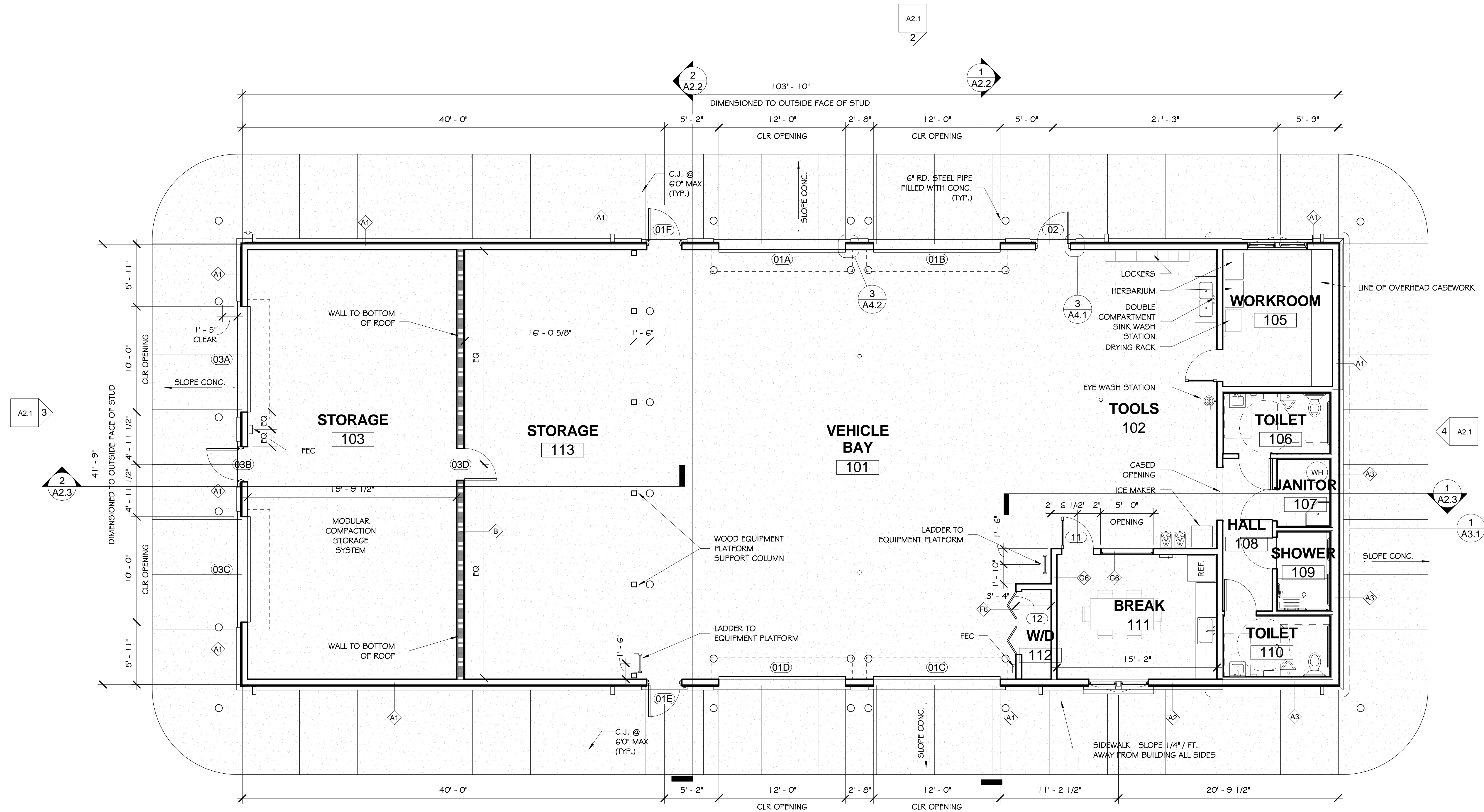
DATE	CONS. DOCS.	DESCRIPTION
04/18/16		

PROJECT: 14060

DRAWN: SDA
CHECKED: SDA

Sheet Title
SLAB PLAN

A1.0



1 FLOOR PLAN
3/16" = 1'-0"

SMITH
DALIA
ARCHITECTS, LLC
621 NORTH AVENUE, NE
SUITE C-140
ATLANTA, GA 30308
404.892.2443 voice
404.892.2470 facsimile
mail@smithdalia.com



U.S. FOREST SERVICE
SOUTHERN REGION

PABLO CRUZ, P.E.
DIRECTOR OF ENGINEERING

APPALACHIAN WORK CENTER
632 MANOR ROAD
MARS HILL, NC 28754

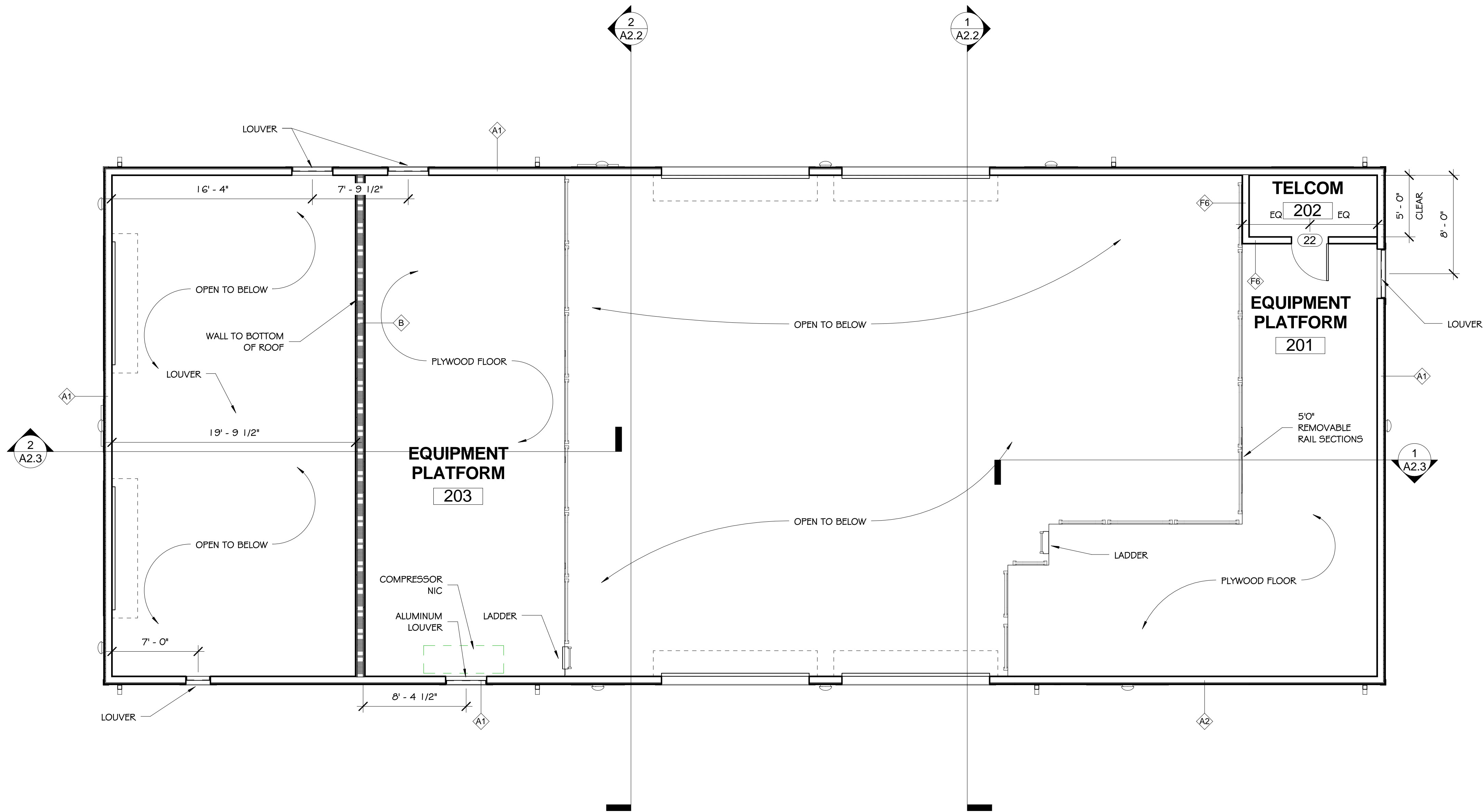
DATE	CONS. DOCS	DESCRIPTION
04/18/16		

PROJECT: 14060

DRAWN: SDA
CHECKED: SDA

Sheet Title
FLOOR PLAN

A1.1



① EQUIPMENT PLATFORM FLOOR PLAN
3/16" = 1'-0"

SMITH
DALIA
ARCHITECTS, LLC
621 NORTH AVENUE, NE
SUITE C-140
ATLANTA, GA 30308
404.892.2443 voice
404.892.2470 facsimile
mail@smithdalia.com



U.S. FOREST SERVICE
SOUTHERN REGION

PABLO CRUZ, P.E.
DIRECTOR OF ENGINEERING

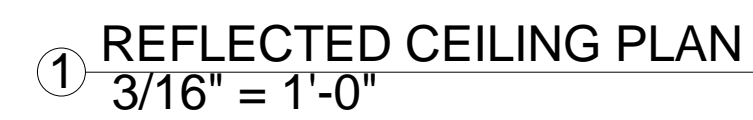
APPALACHIAN WORK CENTER
632 MANOR ROAD
MARS HILL, NC 28754

DATE	DESCRIPTION	CONS. DOCS
04/18/16		


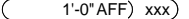


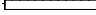

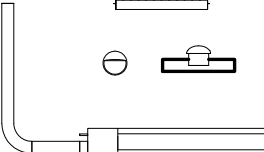
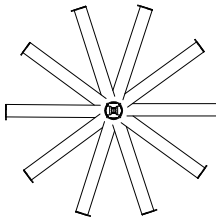
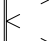




PROJECT: 14060

DRAWN: SDA
CHECKED: SDA

Sheet Title
EQUIPMENT
PLATFORM FLOOR
PLAN

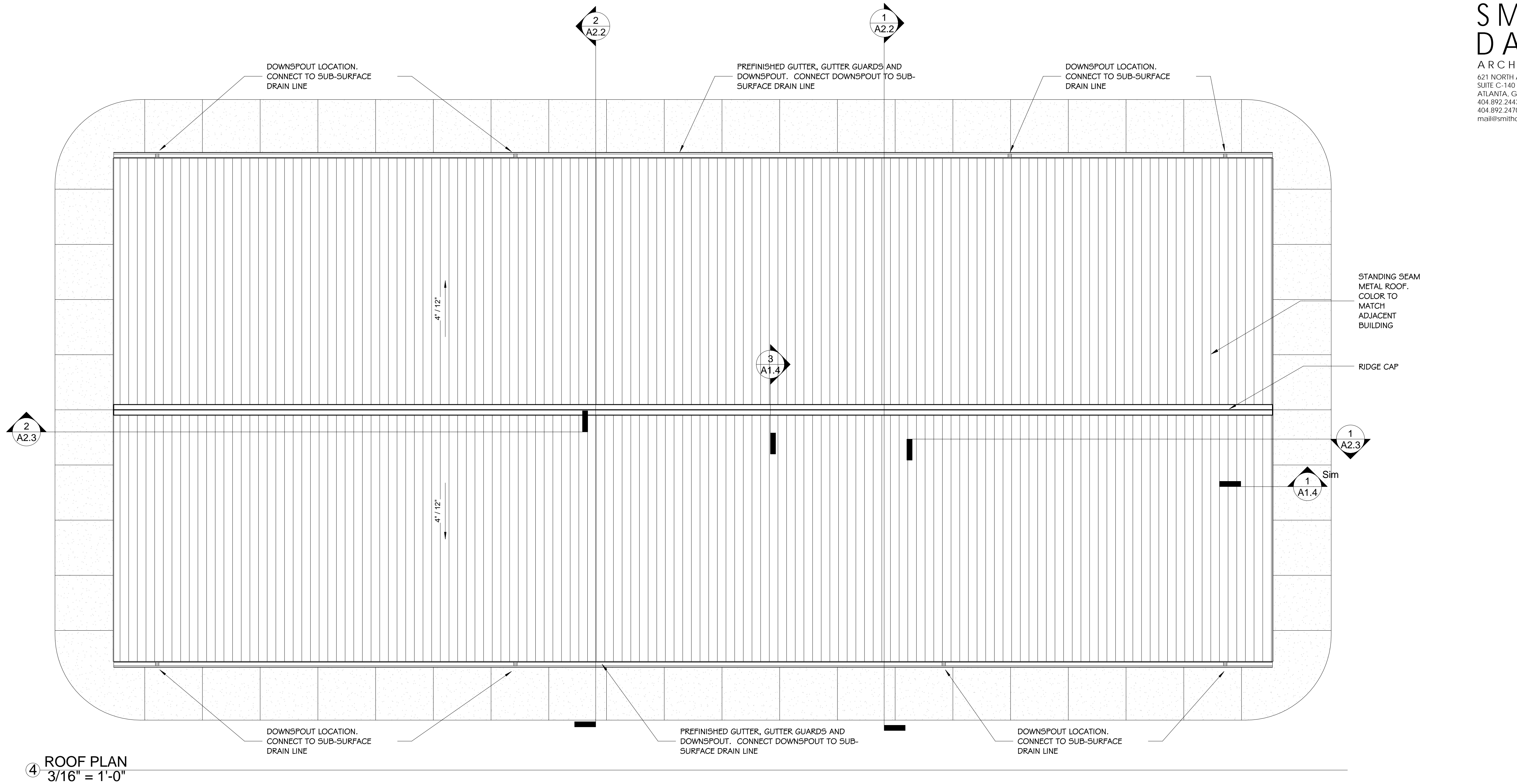


CEILING LEGEND

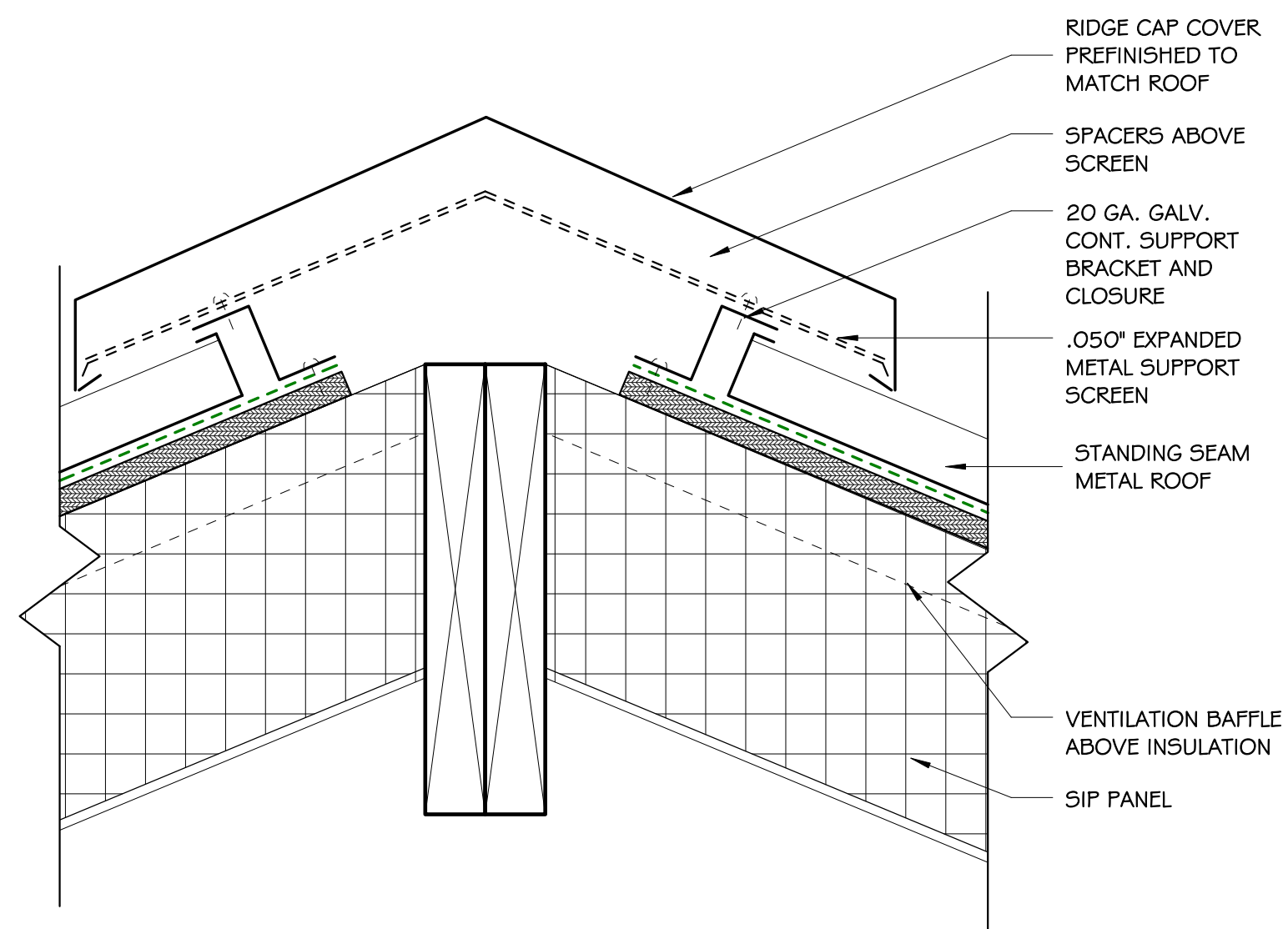
	RECESSED LIGHT FIXTURE, SIZE VARIES		PLY	PAINTED 5/8" PLYWOOD CEILING ON WOOD STUDS
	4' SUSPENDED LIGHT FIXTURE		GYP	GYPSON BOARD CEILING ON WOOD STUDS
	4' WALL MOUNTED LIGHT FIXTURE			
	WALL MOUNTED EXTERIOR LIGHT FIXTURE			
	SUSPENDED INFRARED HEATER			
	SUSPENDED FAN, 4' BLADES			
	ACCESS PANEL			UNDERCOUNTER LIGHT FIXTURE
	DIFFUSER			CENTERLINE
	RETURN AIR			

C:\Users\atoal\Documents\AppalachianWorkCenter_2015_Central_atoal.rvt

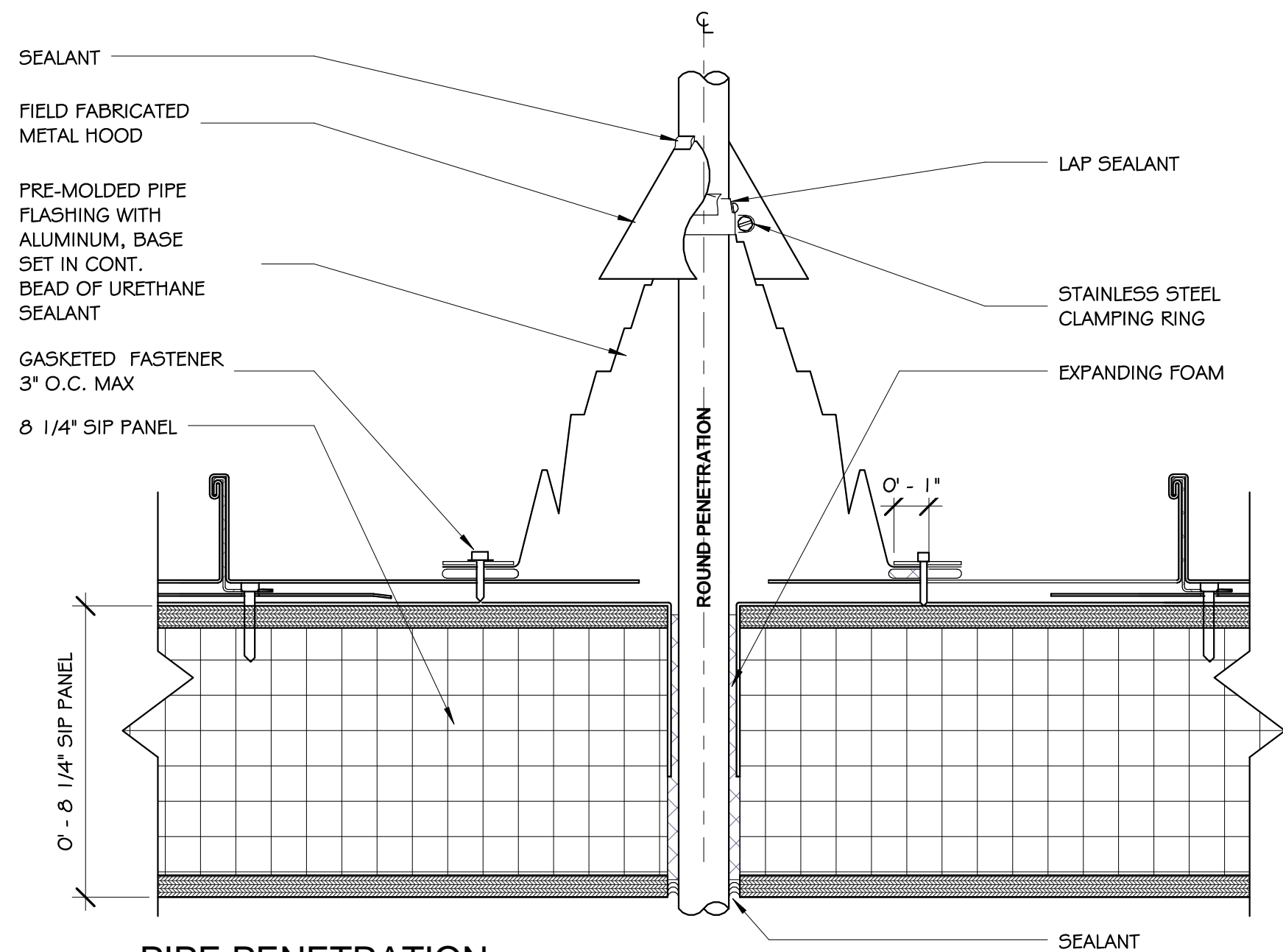
4/20/2016 11:37:49 AM



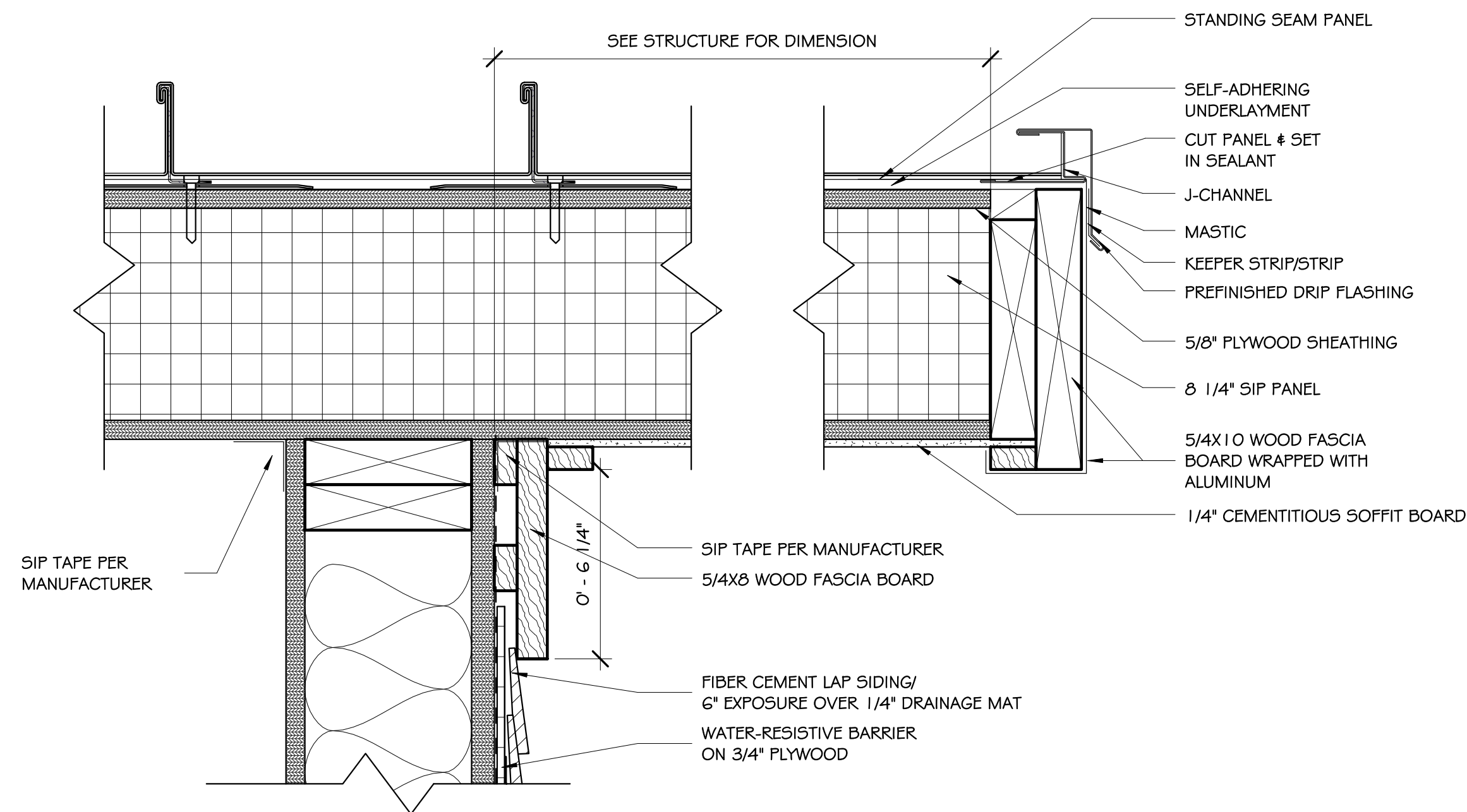
④ ROOF PLAN
3/16" = 1'-0"



③ RIDGE CAP DETAIL
3" = 1'-0"



② PIPE PENETRATION
3" = 1'-0"



① ENDCAP RAKE DETAIL
3" = 1'-0"

SMITH
DALIA
ARCHITECTS, LLC
621 NORTH AVENUE, NE
SUITE C-140
ATLANTA, GA 30308
404.892.2443 voice
404.892.2470 facsimile
mail@smithdalia.com



U.S. FOREST SERVICE
SOUTHERN REGION

PABLO CRUZ, P.E.
DIRECTOR OF ENGINEERING

APPALACHIAN WORK CENTER
632 MANOR ROAD
MARS HILL, NC 28754

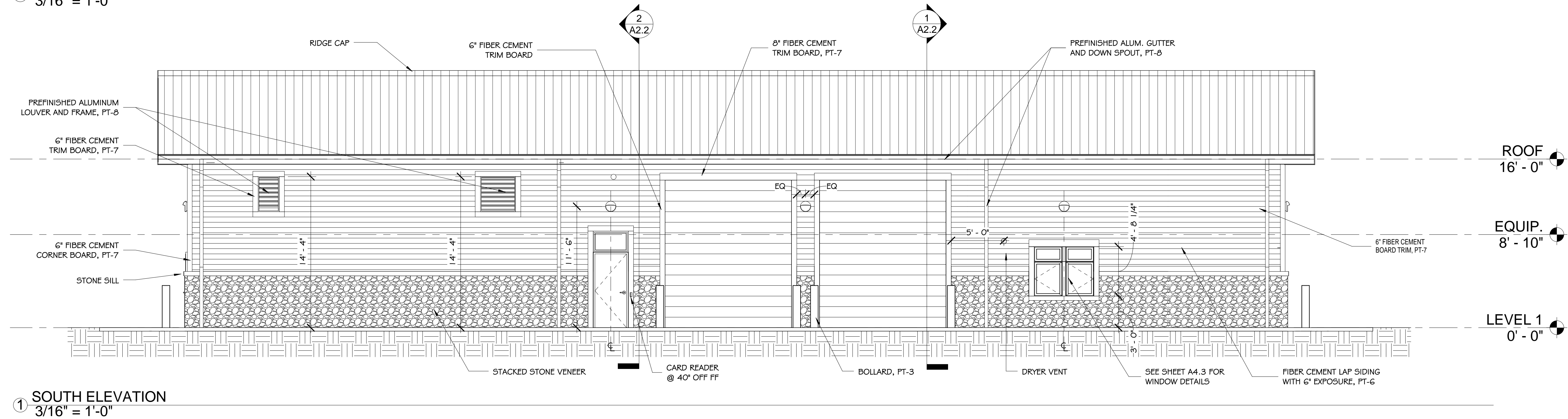
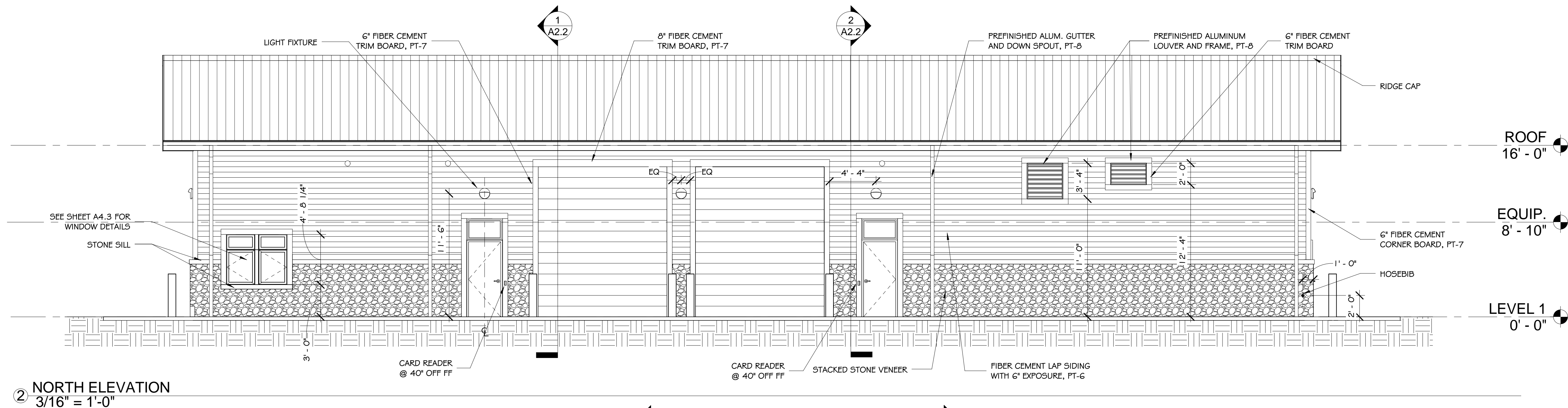
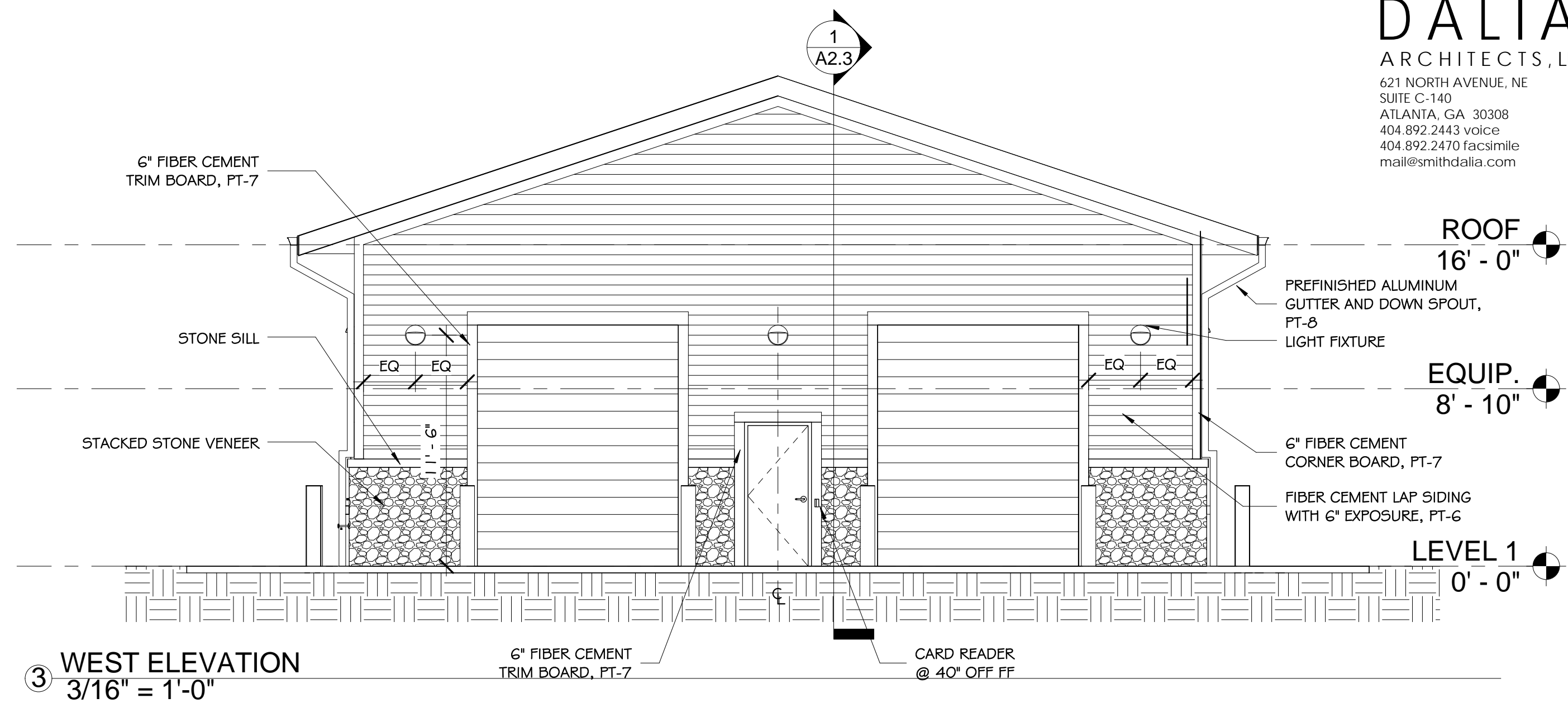
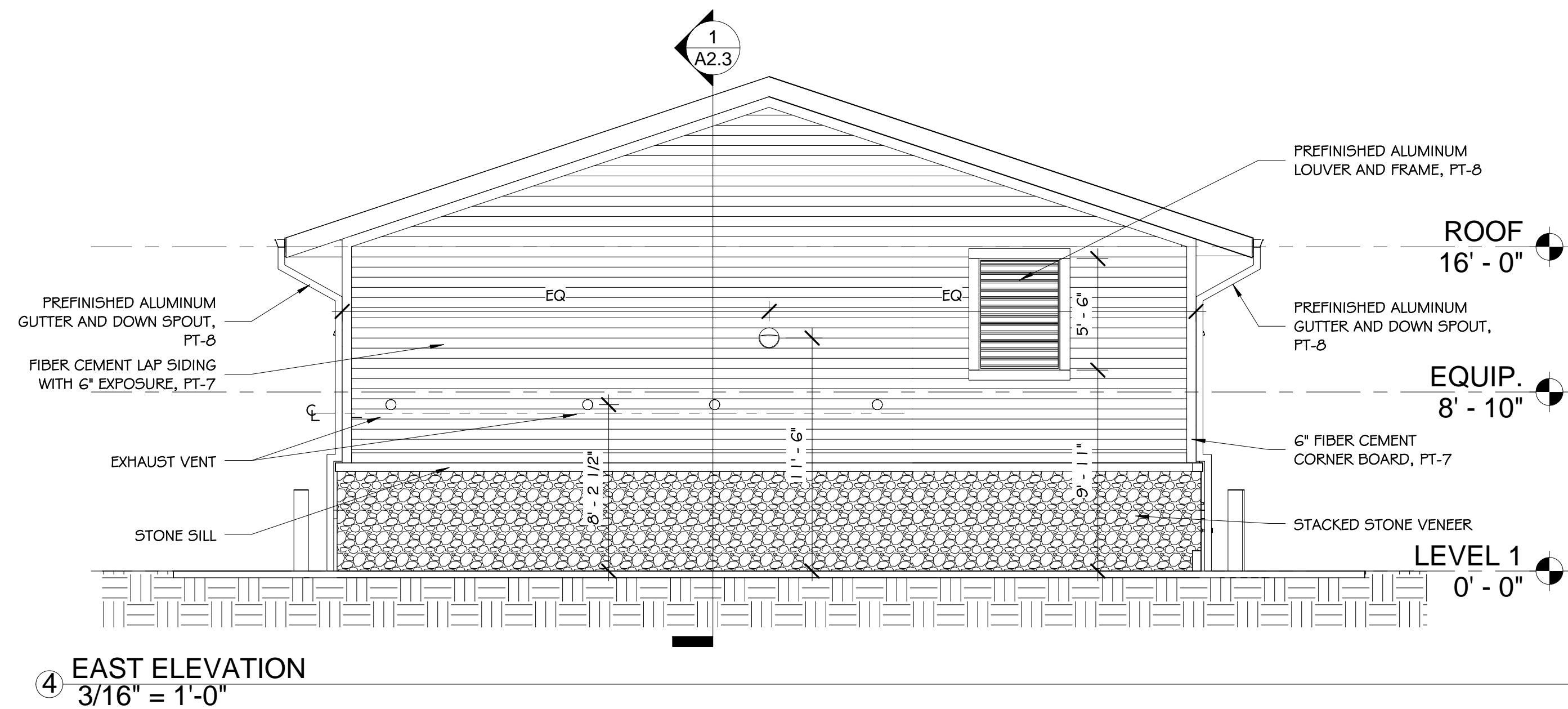
DATE	CONS.	DOCS.
04/18/16		

PROJECT: 14060

DRAWN: SDA
CHECKED: SDA

Sheet Title
ROOF PLAN AND
DETAILS

A1.4



SMITH
DALIA
ARCHITECTS, LLC
621 NORTH AVENUE, NE
SUITE C-140
ATLANTA, GA 30308
404.892.2443 voice
404.892.2470 facsimile
mail@smithdalia.com



U.S. FOREST SERVICE
SOUTHERN REGION

PABLO CRUZ, P.E.
DIRECTOR OF ENGINEERING

APPALACHIAN WORK CENTER
632 MANOR ROAD
MARS HILL, NC 28754

DATE	CONS. DOCS.	DESCRIPTION
04/18/16		

PROJECT: 14060

DRAWN: SDA

CHECKED: SDA

Sheet Title
EXTERIOR
ELEVATIONS

A2.1

SMITH
DALIA
ARCHITECTS, LLC
621 NORTH AVENUE, NE
SUITE C-140
ATLANTA, GA 30308
404.892.2443 voice
404.892.2470 facsimile
mail@smithdalia.com



U.S. FOREST SERVICE
SOUTHERN REGION

PABLO CRUZ, P.E.
DIRECTOR OF ENGINEERING

APPALACHIAN WORK CENTER
632 MANOR ROAD
MARS HILL, NC 28754

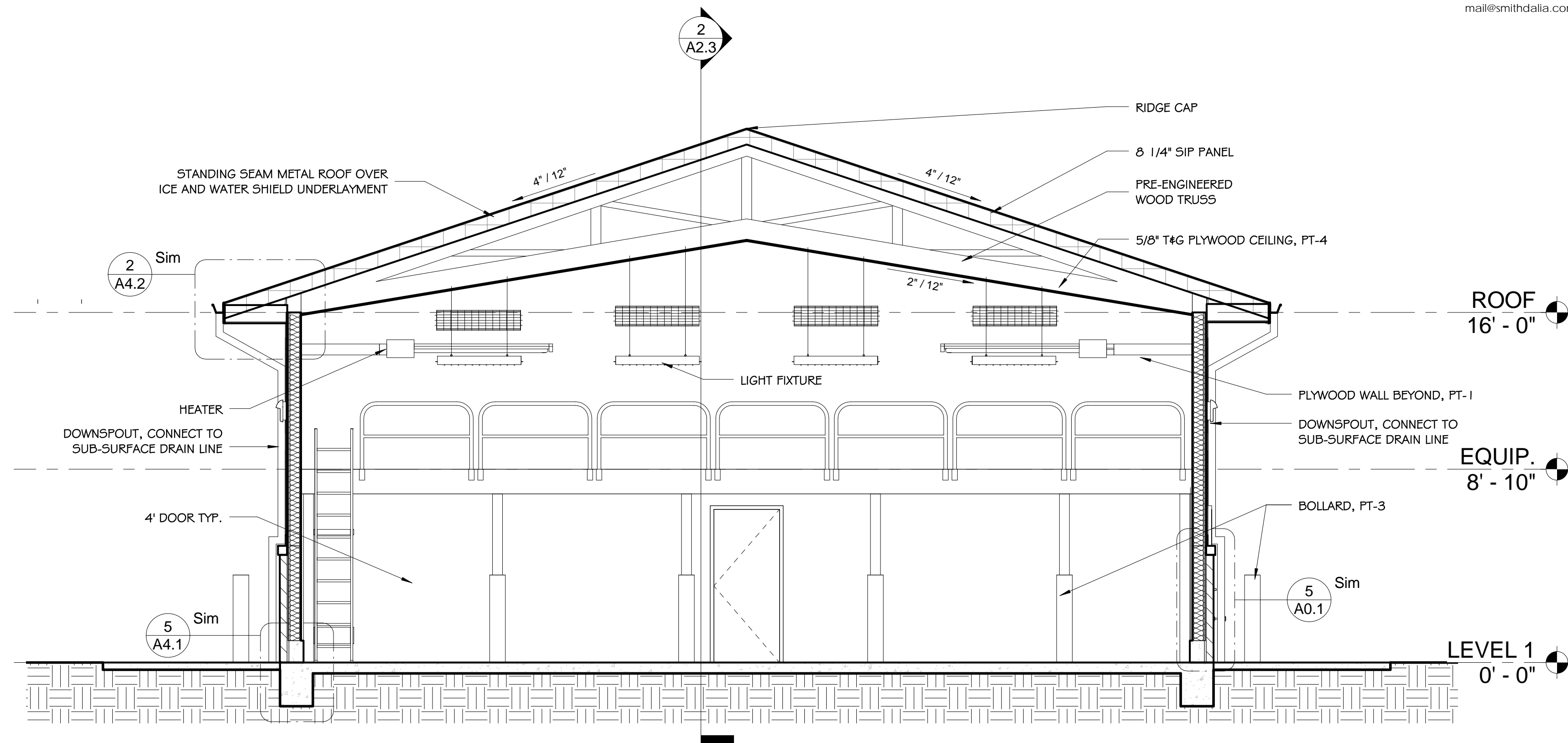
DATE	CONS.	DOCS	DESCRIPTION
04/18/16			

PROJECT: 14060

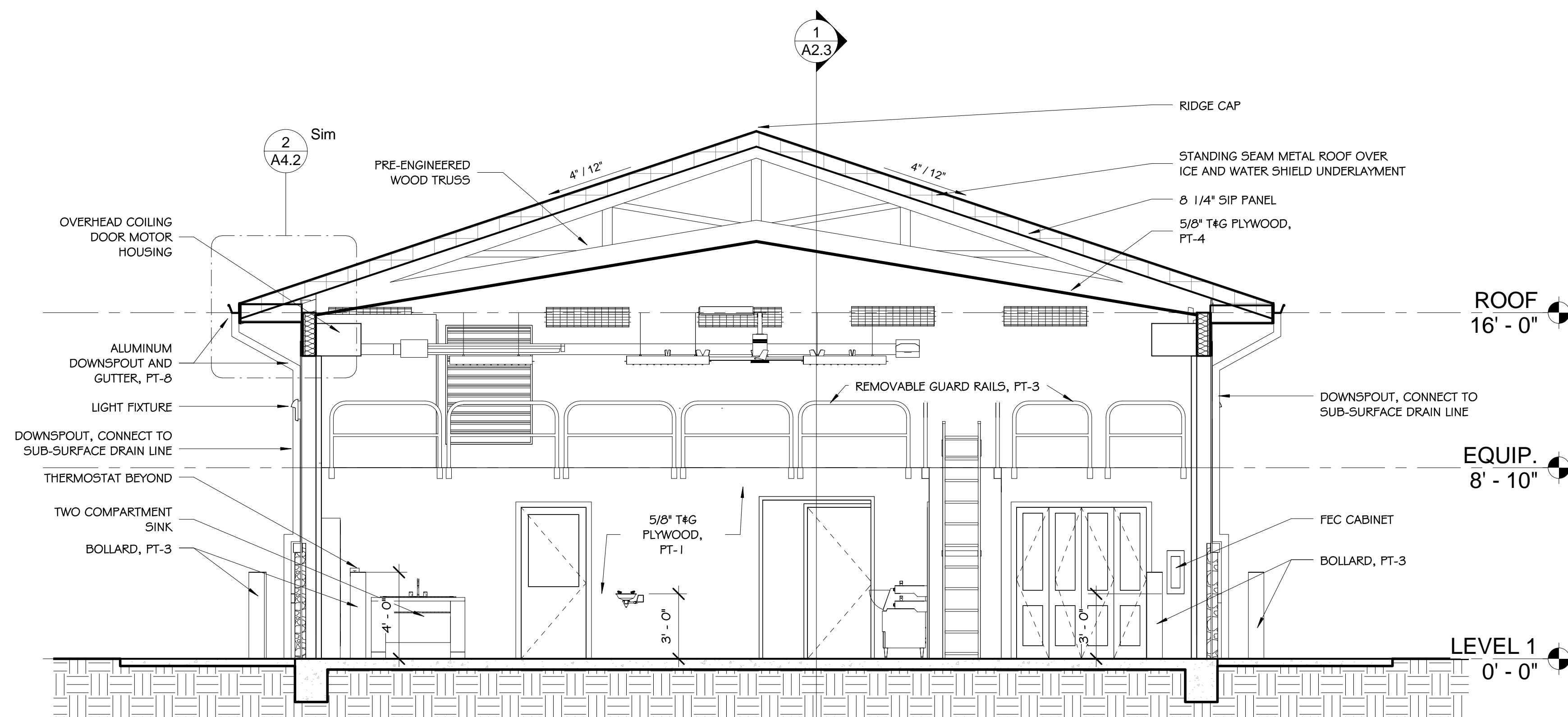
DRAWN: SDA
CHECKED: SDA

Sheet Title
BUILDING
SECTIONS

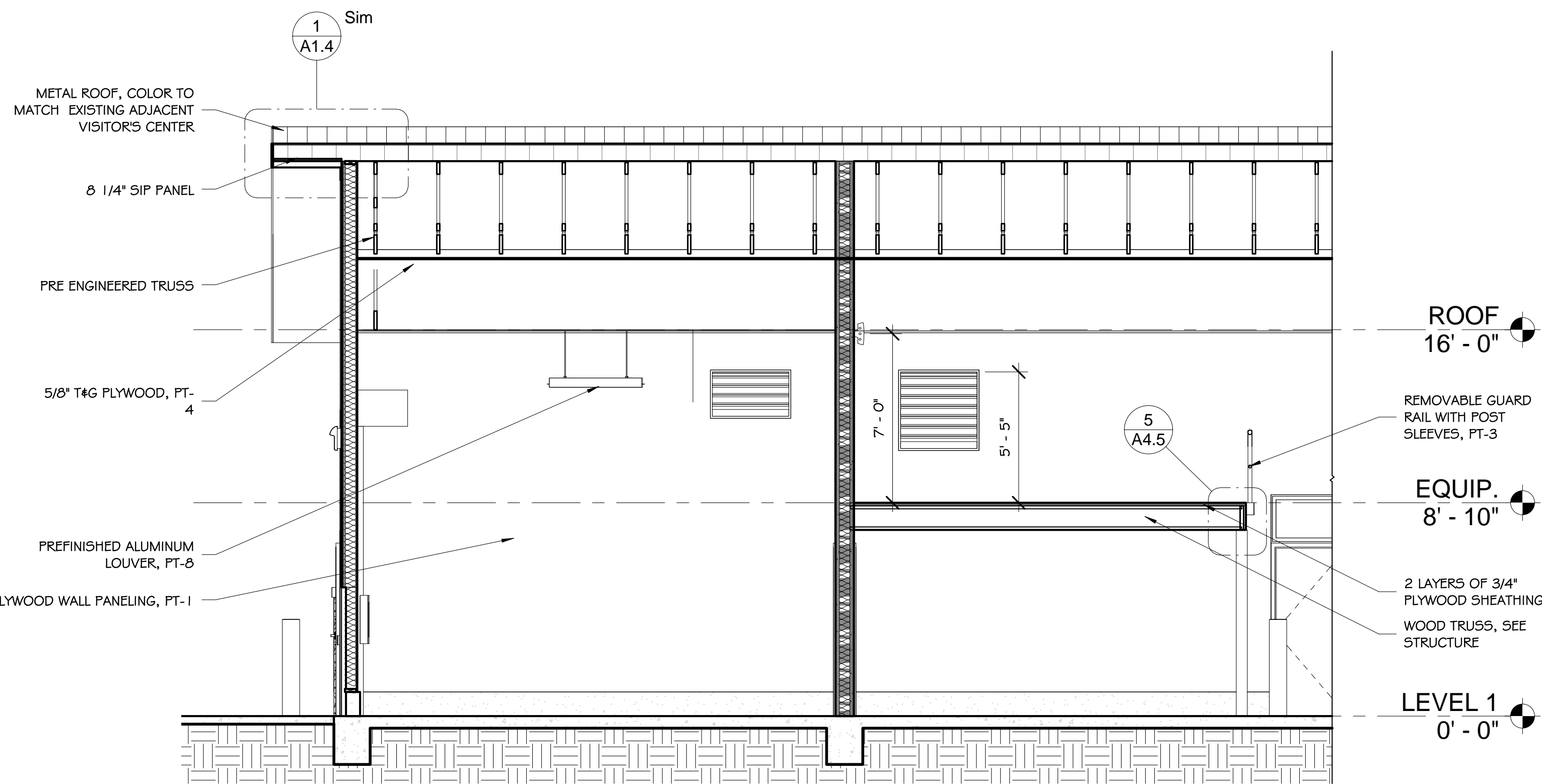
A2.2



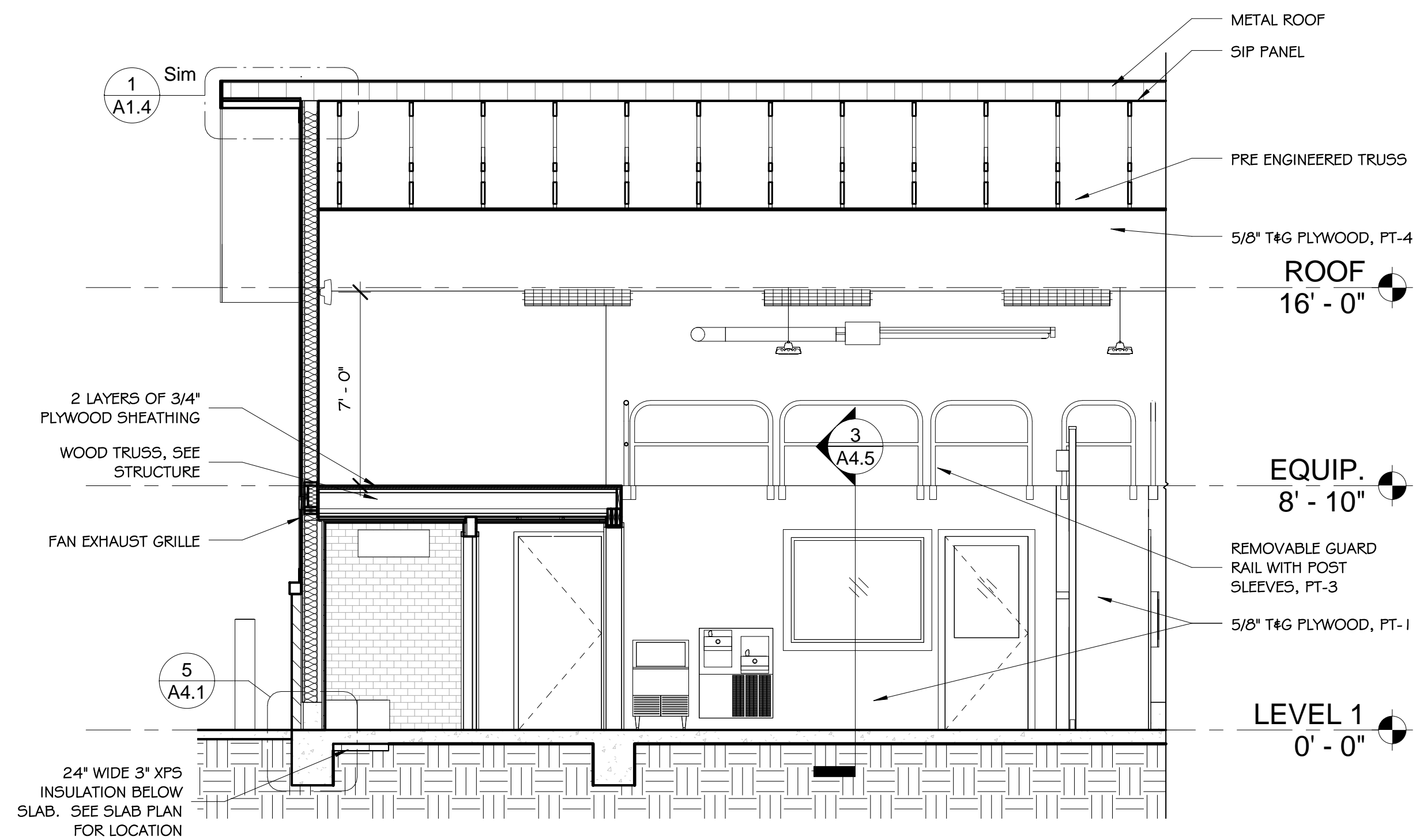
② VEHICLE MEZZANINE SECTION
1/4" = 1'-0"



① VEHICLE BAY SECTION
1/4" = 1'-0"



② FIRE CACHE SECTION
1/4" = 1'-0"



① EQUIPMENT PLATFORM SECTION
1/4" = 1'-0"

SMITH
DALIA
ARCHITECTS, LLC
621 NORTH AVENUE, NE
SUITE C-140
ATLANTA, GA 30308
404.892.2443 voice
404.892.2470 facsimile
mail@smithdalia.com



U.S. FOREST SERVICE
SOUTHERN REGION

PABLO CRUZ, P.E.
DIRECTOR OF ENGINEERING

APPALACHIAN WORK CENTER
632 MANOR ROAD
MARS HILL, NC 28754

DATE	DESCRIPTION	CONS. DOCS.
04/18/16		

PROJECT: 14060

DRAWN: SDA

CHECKED: SDA

Sheet Title
BUILDING
SECTIONS

A2.3