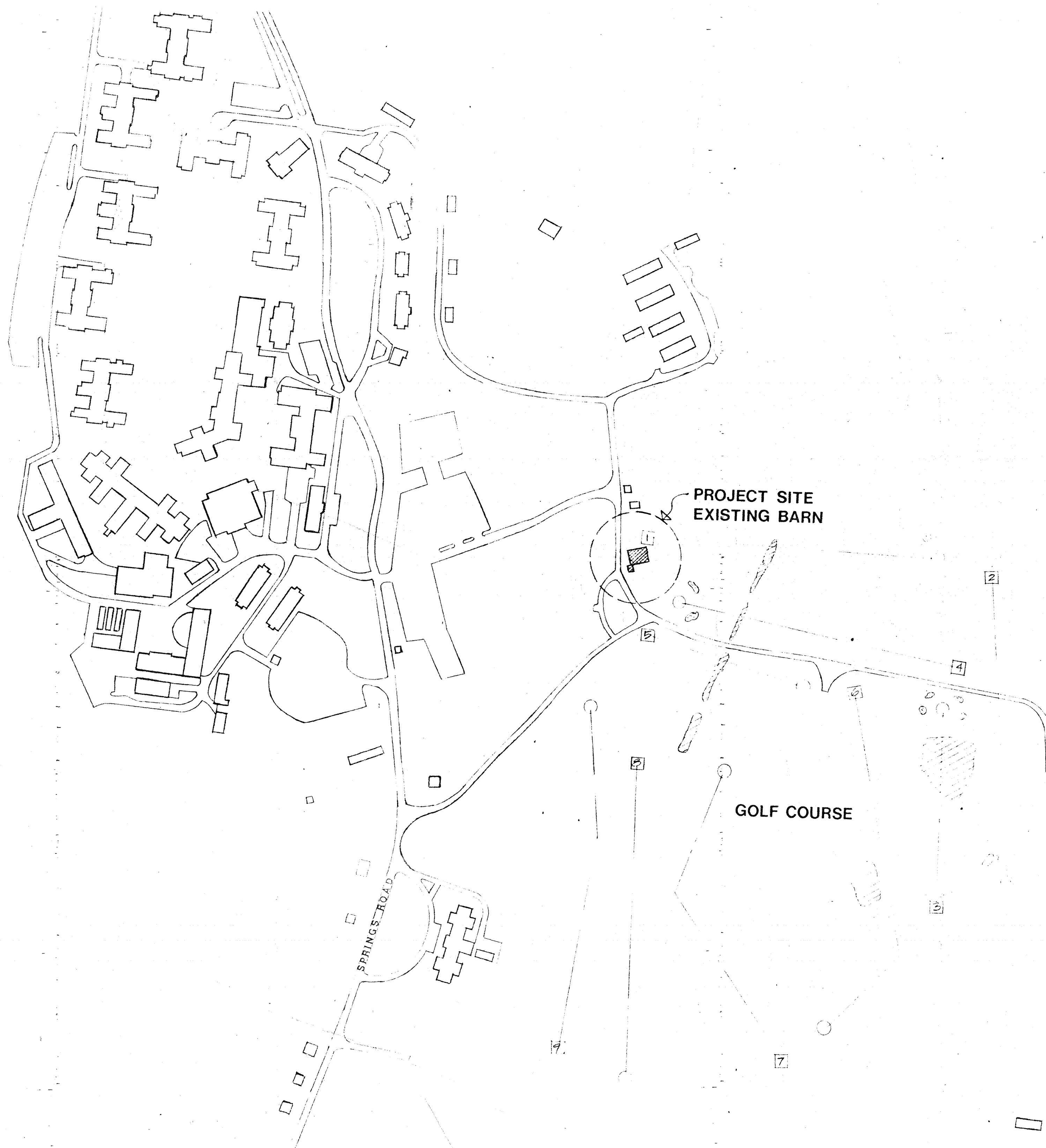


PH 85-0068  
No 0 #

ENTERED MAR 17 2011  
1 of 17



SITE LOCATION MAP - VA HOSPITAL, BEDFORD, MASSACHUSETTS

# VA GOLF COURSE CLUBHOUSE SPRINGS ROAD, BEDFORD, MA. PROJECT NO: HA 85-0068

DEPARTMENT OF THE AIR FORCE  
HEADQUARTERS ELECTRONIC SYSTEMS DIV (AFSC)  
HANSCom AIR FORCE BASE, MA. 01731

LIST OF DRAWINGS:	
A-1 TITLE SHEET	1 of 17
ARCHITECTURAL	
A-2 GROUND FLOOR PLAN - SECTION A-A	2 of 17
A-3 MEZZANINE FLOOR PLAN - SECTION B-B	3 of 17
A-4 HANGOUT FLOOR PLAN - FINISH SCHEDULE	4 of 17
A-5 NORTH & WEST ELEVATIONS - WINDOW DETAIL	5 of 17
A-6 NORTH & EAST ELEVATIONS - WINDOW TYPES	6 of 17
A-7 TRANVERSE SECTION - INTERIOR ELEVATIONS	7 of 17
A-8 DETAILS	8 of 17
A-9 STAIR DETAILS	9 of 17
STRUCTURAL	
S-1 STRUCTURAL PLANS - SECTIONS - DETAILS	10 of 17
MECHANICAL	
M-1 PLUMBING - VENTILATION: GROUND FLOOR PLAN, SECTION & DETAIL	11 of 17
M-2 VENTILATION: MEZZANINE FLOOR PLAN & SECTION	12 of 17
M-3 VENTILATION: HANGOUT FLOOR PLAN	13 of 17
ELECTRICAL	
E-1 ELECTRICAL: GROUND FLOOR PLAN & SECTION	14 of 17
E-2 ELECTRICAL: MEZZANINE FLOOR PLAN & SECTION	15 of 17
E-3 ELECTRICAL: HANGOUT FLOOR PLAN	16 of 17
EXISTING CONDITIONS	
C-1 EXISTING MECHANICAL AND ELECTRICAL	17 of 17

ARCHITECTS:  
COLE AND GOYETTE, ARCHITECTS AND PLANNERS, INC.  
540 FRANKLIN STREET, CAMBRIDGE, MASSACHUSETTS, 02139

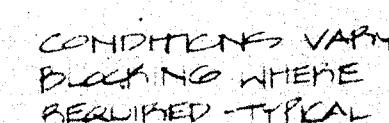
ENGINEER:  
WHITMAN AND HOWARD, INC.  
45 WILLIAM STREET, WELLESLEY, MASSACHUSETTS, 02181

A-1 TITLE SHEET

14553

16 of 17





14560



ENTERED MAR 17 2001

456  
C  
786

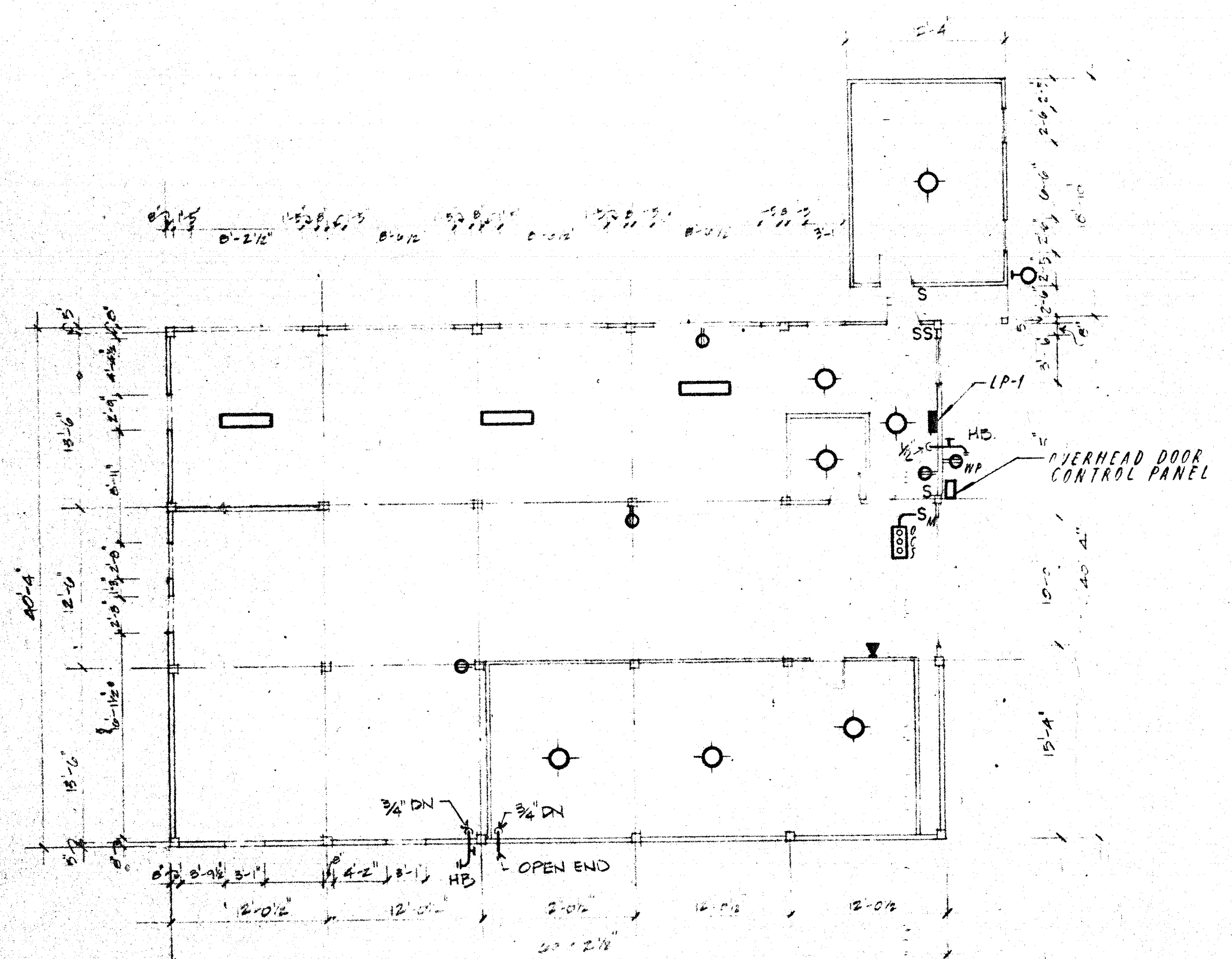
PH 85-0068

LEGEND

- FIXTURE FLUORESCENT LIGHTING
- CEILING-MOUNTED INCANDESCENT LIGHTING FIXTURE
- WALL-MOUNTED INCANDESCENT LIGHTING FIXTURE
- WALL-MOUNTED HORN
- DUPLEX RECEPTACLE (WP INDICATES WEATHERPROOF)
- S SINGLE POLE SWITCH
- SM MOTOR-RATED SWITCH
- SW THREE-WAY SWITCH
- SURFACE-MOUNTED LIGHTING PANEL
- SURFACE-MOUNTED POWER PANEL
- JUNCTION BOX
- OVERHEAD DOOR OPERATOR
- CONDUIT RUN UNDERGROUND
- WALL-MOUNTED TELEPHONE OUTLET
- HOSE BIBB
- GATE VALVE

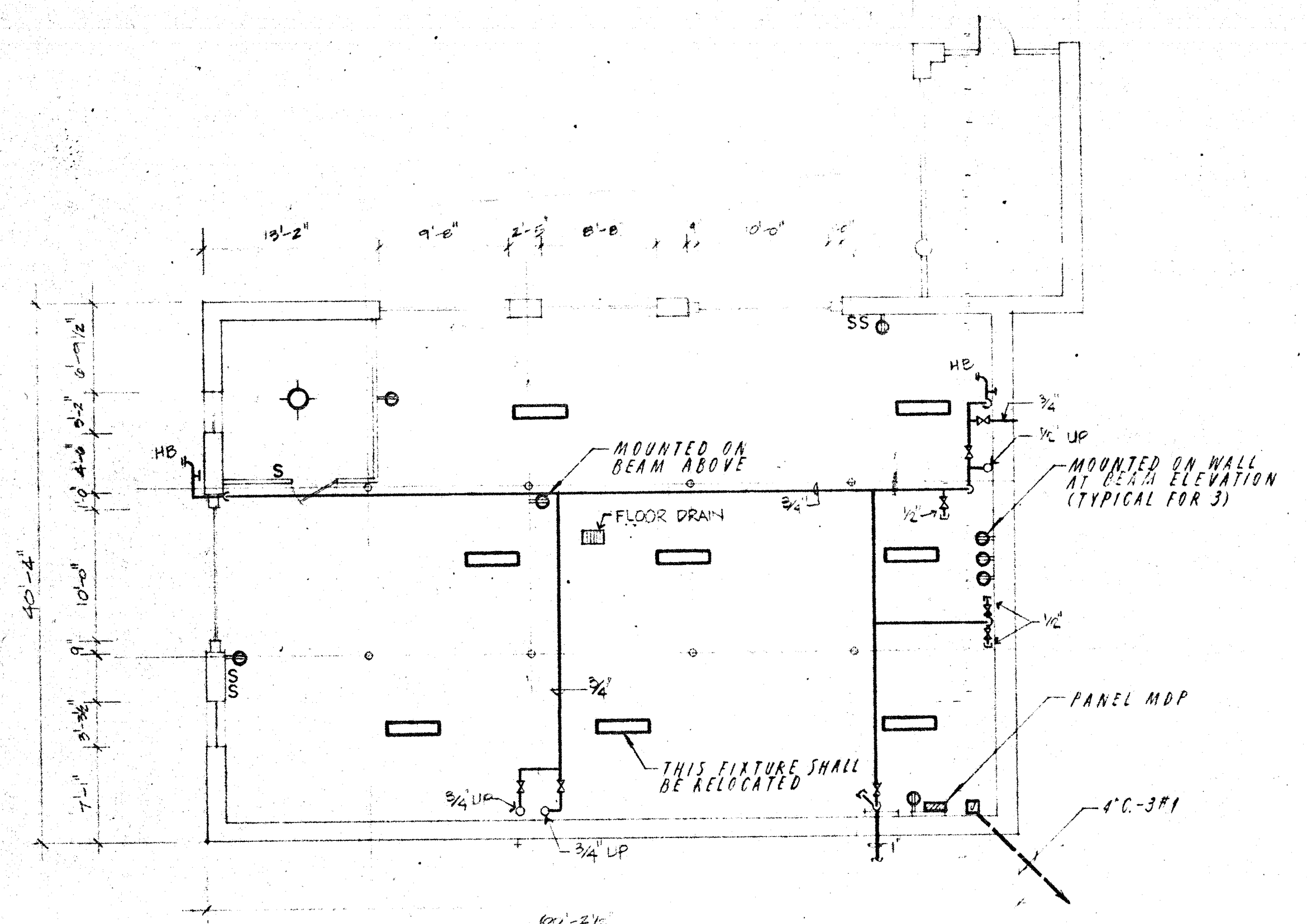
NOTES:

- THIS DRAWING IS INTENDED FOR INFORMATION ONLY. EXACT LOCATION OF ELECTRICAL EQUIPMENT TO BE DETERMINED IN THE FIELD.
- CONTRACTOR TO REMOVE ALL ELECTRICAL EQUIPMENT ON GROUND FLOOR AND MEZZANINE INCLUDING CONDUIT AND WIRING, AS DIRECTED BY CONTRACTING OFFICER.



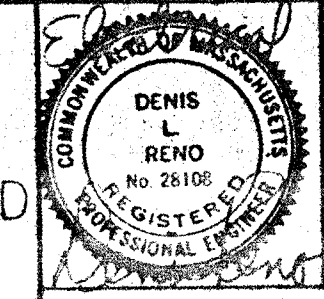
GROUND FLOOR (SEE NOTE 2)  
1/8" = 1'-0"

1/8" = 1'-0"



BASEMENT (EQUIPMENT TO REMAIN)  
1/8" = 1'-0"

1/8" = 1'-0" (SEE NOTE 2)

WHITMAN & HOWARD INC 45 WILLIAM ST WELLESLEY MASS				COLE AND GOYETTE  ARCHITECTS AND PLANNERS INC. 540 FRANKLIN STREET CAMBRIDGE, MASSACHUSETTS TELEPHONE: 617-491-5662	
DATE 2-6-86		SCALE AS NOTED		DRAWN BY E.C.C.	
CHECKED BY K.F.R.					
SHEET C-1		REV		DATE	
COORDINATION		DESCRIPTION		DRAWN APPVD	
SAFETY CHIEF O & M		DEPARTMENT OF THE AIR FORCE 345TH AIR BASE GROUP ESO A/SC HANSCOM AIR FORCE BASE, MA 01731			
SECURITY CONTRACT PGM		BASE CIVIL ENGINEERING DIVISION			
COMMUNICATION CONST MGMT		VA HOSPITAL GOLFCOURSE CLUBHOUSE			
FIRE CHIEF COR CON ENGR		EXISTING MECHANICAL AND ELECTRICAL CONDITIONS			
MEDICAL SRV ENVIRONMENTAL		CHIEF ENGINEERING SECT		CHIEF ENGR & ENV BRANCH	
USING AGENCY ENERGY CONSV		DESIGNED BY		DRAWN BY	
NOC OF DRAFTING		SCALE		DATE	
				SHEET 17 OF 17	

HOSP. DIRECTOR



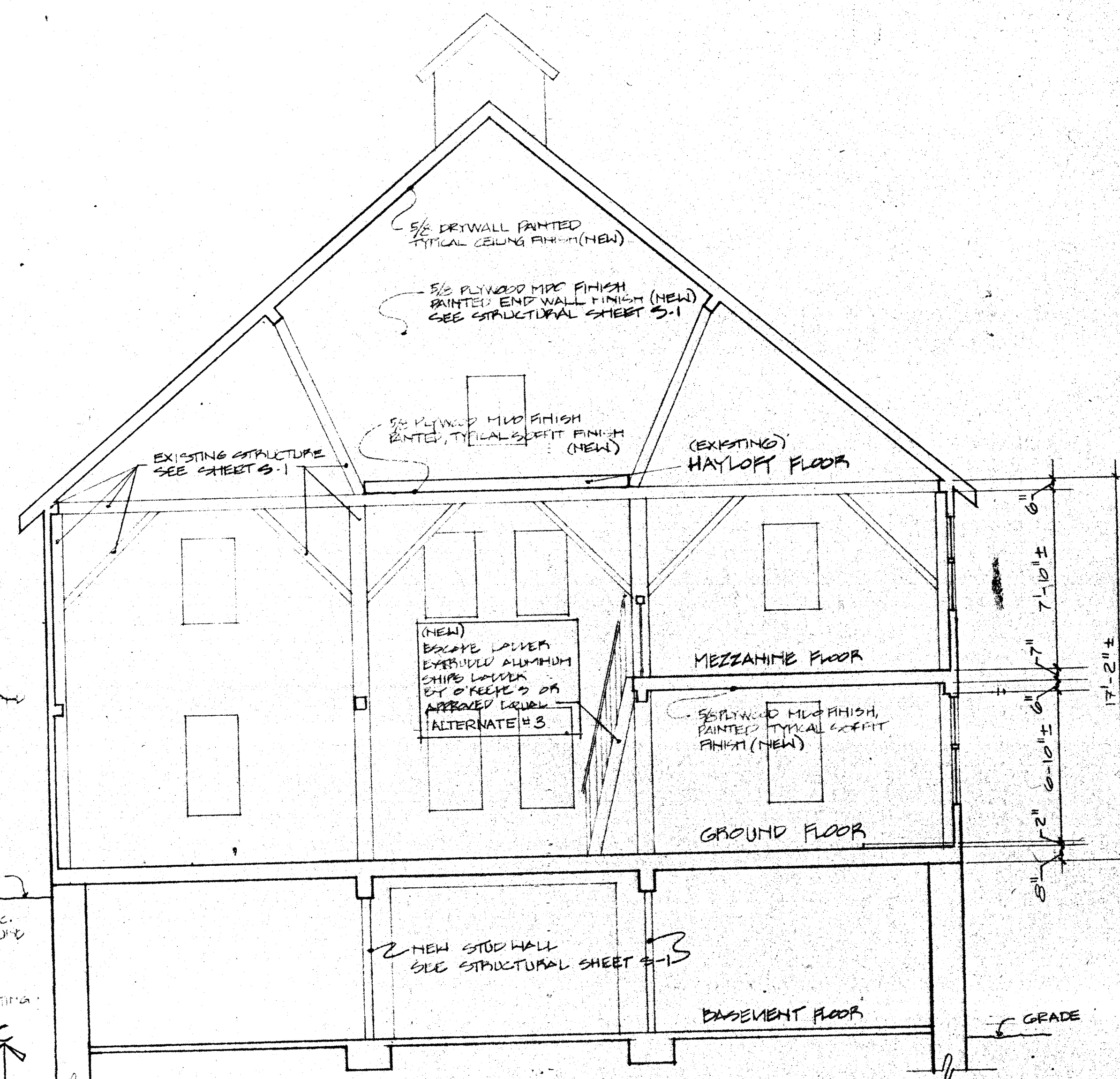
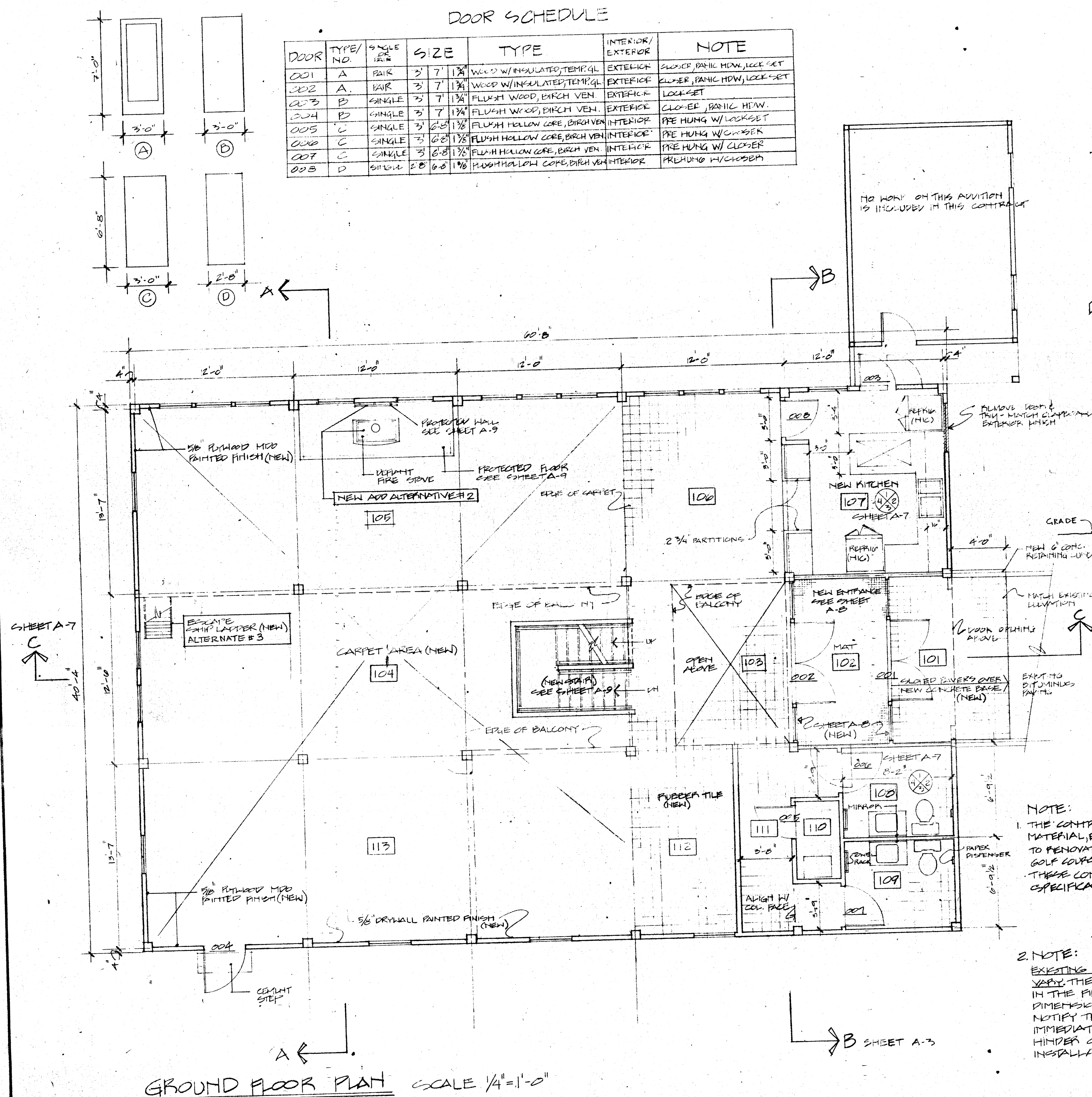
PH 85-1068  
1004  
2 of 7

EMILY CORP. WINE CA  
1988  
Jody Cause

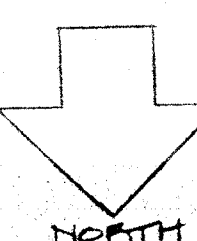
ENTERED MAR 17 2011

# DOOR SCHEDULE

DOOR	TYPE/NO.	STYLE	SIZE	TYPE	INTERIOR/EXTERIOR	NOTE
001	A	PAIR	3' 7" 1 3/4"	WOOD W/INSULATED TEMP GL	EXTERIOR	CLOSER, PANIC HDW, LOCK SET
002	A	PAIR	3' 7" 1 3/4"	WOOD W/INSULATED TEMP GL	EXTERIOR	CLOSER, PANIC HDW, LOCK SET
003	B	SINGLE	3' 7" 1 3/4"	FLUSH WOOD, BIRCH VEN.	EXTERIOR	LOCK SET
004	B	SINGLE	3' 7" 1 3/4"	FLUSH WOOD, BIRCH VEN.	EXTERIOR	CLOSER, PANIC HDW
005	C	SINGLE	3' 6" 8 1/8"	FLUSH HOLLOW CORE, BIRCH VEN.	INTERIOR	PRE HUNG W/ LOCK SET
006	C	SINGLE	3' 6" 8 1/8"	FLUSH HOLLOW CORE, BIRCH VEN.	INTERIOR	PRE HUNG W/ LOCK SET
007	C	SINGLE	3' 6" 8 1/8"	FLUSH HOLLOW CORE, BIRCH VEN.	INTERIOR	PRE HUNG W/ LOCK SET
008	D	SINGLE	3' 6" 8 1/8"	FLUSH HOLLOW CORE, BIRCH VEN.	INTERIOR	PRE HUNG W/ LOCK SET



## SECTION A-A SCALE 1/4"=1'-0"



### NOTE:

1. THE CONTRACTOR SHALL PROVIDE ALL MATERIAL, EQUIPMENT AND LABOR REQUIRED TO RENOVATE THE BARN FOR USE AS THE GOLF COURSE CLUBHOUSE DESCRIBED BY THESE CONSTRUCTION DRAWINGS AND SPECIFICATIONS.

### 2. NOTE:

EXISTING CONDITIONS AND DIMENSIONS VARY. THE CONTRACTOR SHALL VERIFY IN THE FIELD CONDITIONS AND DIMENSIONS. THE CONTRACTOR SHALL NOTIFY THE CONTRACTING OFFICE IMMEDIATELY OF DISCREPANCIES WHICH HINDER OR RESTRICT CORRECT INSTALLATION OF WORK.

R.E. Nole  
HOSP. DIRECTOR

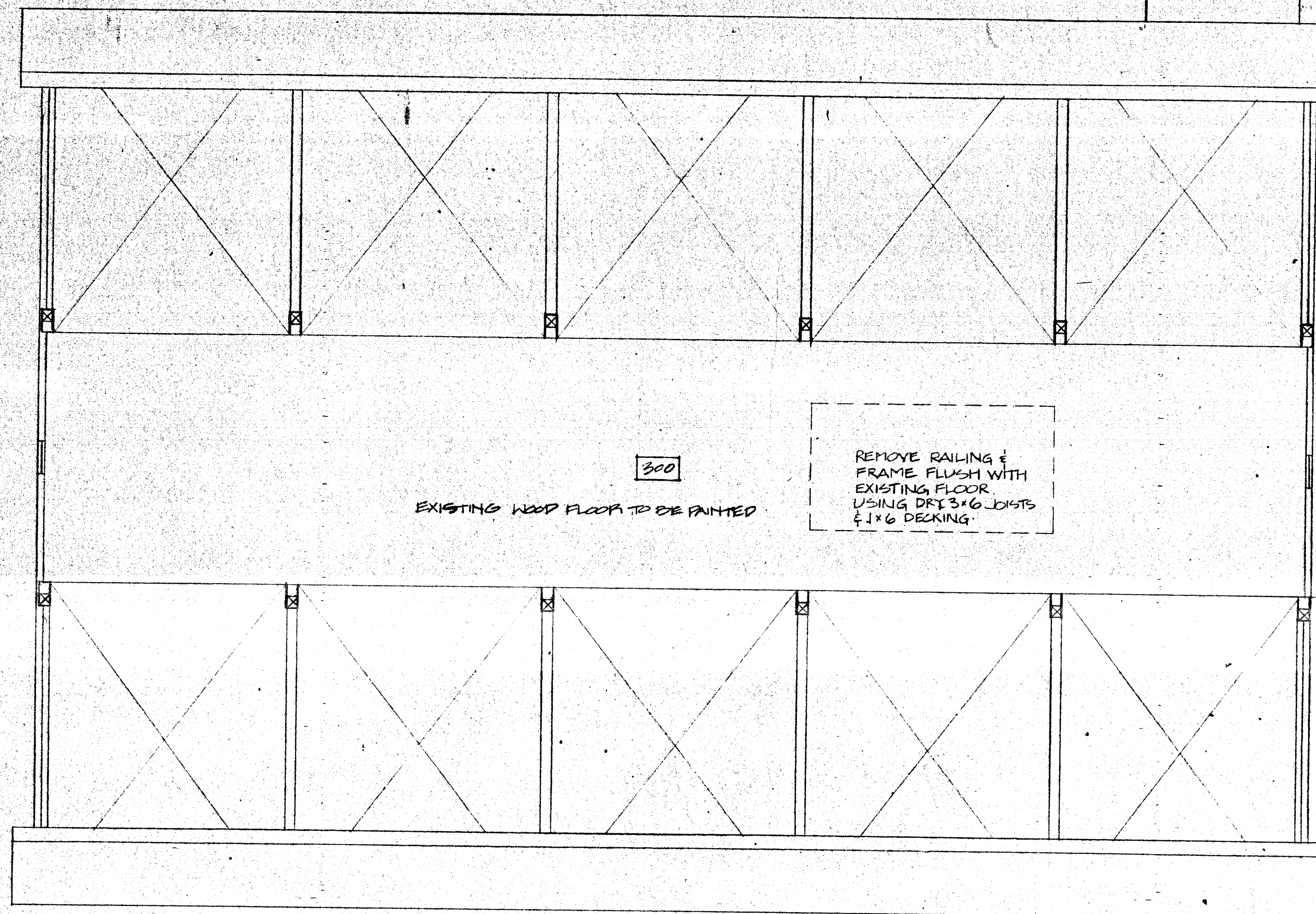
		<b>COLE AND GOYETTE</b>	
ARCHITECTS AND PLANNERS INC.		640 FRANKLIN STREET CAMBRIDGE, MASSACHUSETTS TELEPHONE: 877-401-5502	
DATE	1/7/00	SCALE	1/4"=1'-0"
DRAWN BY	S.S.	CHECKED BY	HS
REVIS	1/10/00		
SHEET A-2			
COORDINATION			
SAFETY: E.Y. Goyette, CHIEF O & M			
SECURITY	CONTRACT PM	CHIEF ENGINEERING SECT	CHIEF ENGR. & ENV. BRANCH
COMMUNICATION	CONTRACT PM	ARCH	CIVIL
FIRE CHIEF	COR. CON. ENGR	ELEC	MECH
MEDICAL SVY	ENVIRONMENTAL	DESIGNED BY	DRAWN BY
USING AGENCY	ENERGY CONSV	SCALE	DATE
NGIC OF DRAFTING			



### SCHEDULE OF MATERIALS, TEXTURES & COLORS

ITEM	MATERIAL/TEXTURE	COLOR
ROOF	PATCH TO MATCH EXISTING MATERIAL & COLOR	BLACK
EXISTING SIDING	PATCH TO MATCH EXISTING CLAPBOARD, 4" TO WEATHER	WHITE
BARN DOOR	EXTERIOR - APA 303 PANEL, T-11, 4" O.C. GROOVES	WHITE/DARK GREEN
EXIT DOORS	FLUSH PANEL, SOLID CORE, INTERIOR PAINTED WHITE	EXT. DARK GREEN
GLASS ENTR. DOORS (FIXED LT. FROM)	WOOD, STAINED SEMI-TRANSPARENT OLYMPIC OR EQUAL	COLOR # 910
GROUND FLOOR CARPET	BAY 300E 111 BY WELCO OR EQUAL	INDIA TAN (INTA)
STAIR & MEZZANINE CARPET	ELECTRA BY WELCO, OR EQUAL	BURNISHED BRONZE (BUCK)
EXPOSED STRUCTURE INTERIOR	WOOD, STAINED SEMI-TRANSPARENT OLYMPIC OR EQUAL	COLOR # 916
SHEET VINYL	VINYL CORLON, PATTERN & COLOR, SEAGATE OR EQUAL	#B0510
RUBBER TILE	ENDURA BY BILTRITE - DOMINO PATTERN OR EQUAL	4471 CHOCOLATE
PLY WALL	INTERIOR	WHITE
PLYWOOD	INTERIOR PANELS AND CEILINGS	WHITE
PLASTIC LAMINATE	COUNTER TOPS NEVAMAR COLOR OR EQUAL & CABINETS	CHINCHILLA
MEZZANINE/HAY LOFT	AREAS OF WOOD FLOORING - PAINTED DECK	LIGHT BROWN
WOOD TRIM	TRIM ADJACENT TO STRUCTURE	STAINED COLOR # 916
PAINTED WOOD	INTERIOR WINDOWS, DOOR, TRIM & CASE	WHITE
EXPOSED STEEL	PAINT ALL STRUCTURAL STEEL CLIPS, ANGLE & TIE RODS	FLAT BLACK

NO WORK ON THIS ADDITION  
IS INCLUDED IN THIS CONTRACT



HAY LOFT SCALE 1/4" = 1'-0"

### SPACE FINISH SCHEDULE NEW WORK

NO.	SPACE	FLOOR		BASE		WALLS								CEILING		NOTES
		M	F	M	F	SOUTH	WEST	NORTH	EAST			M	F			
000	BASEMENT															NO FINISH WORK - SEE STAIR DETAIL
100	GROUND FLOOR															
101	ENTRY	PV	-	WD	PTD	CLP	PTD	GL	-	CLP	PTD	OP	-	PLWD	PTD	DOOR & GL TRIM PTD/ALL GLASS TEMPERED/INSULATED
102	FOYER	CO	-	WD	PTD	CLP	PTD	GL	-	CLP	PTD	GL	-	PLWD	PTD	DOOR & GL TRIM PTD/ALL GLASS TEMPERED/INSULATED
103	STAIR BAY	RB	-	WD	PTD	-	-	GL	-	-	-	-	-	PLWD	PTD	STAIR TREADS CARPET/BASE AT WEST WALL ONLY
104	CENTER BAYS	CP	-	WD	PTD	-	-	-	-	-	-	-	-	PLWD	PTD	-
105	SOUTH BAYS	CP	-	WD	PTD	PLWD	PTD	-	-	-	-	-	-	PLWD	PTD	PLWD
106	EATING BAY	RB	-	WD	PTD	DW	PTD	WD	PTD	-	-	-	-	-	-	BASE SOUTH & EAST WALLS ONLY
107	KITCHEN	SV	-	WD	PTD	PLWD	PTD	PLWD	PTD	DW	PTD	WD	PTD	PLWD	PTD	
108	TOILET	SV	-	WD	PTD	DW	PTD	PLWD	PTD	DW	PTD	DW	PTD	PLWD	PTD	
109	TOILET	SV	-	WD	PTD	DW	PTD	PLWD	PTD	PLWD	PTD	DW	PTD	PLWD	PTD	
110	JANITOR	SV	-	WD	PTD	DW	PTD	DW	PTD	DW	PTD	DW	PTD	PLWD	PTD	
111	HALL WAY	RB	-	WD	PTD	DW	PTD	DW	PTD	DW	PTD	DW	PTD	PLWD	PTD	
112	MANAGER AREA	RB	-	WD	PTD	-	-	DW	PTD	DW	PTD	DW	PTD	PLWD	PTD	BASE NORTH & WEST WALLS ONLY
113	NORTH BAYS	CP	-	WD	PTD	-	-	-	-	DW	PTD	PLWD	PTD	OPEN	PTD	BASE EAST & NORTH WALLS ONLY
200	MEZZANINE															
201	CONNECTOR	CP	-	WD	PTD	-	-	GL	-	-	-	RL	PTD	PLWD	PTD	PTD TRIM
202	LOUNGE	CP	-	WD	PTD	PLWD	PTD	PLWD	PTD	RL	PTD	PLWD	PTD	DW	PTD	
203	VACANT	WD	PTD	WD	PTD	RL	PTD	PLWD	PTD	DW	PTD	RL	PTD	DW	PTD	RETAIN EXISTING WOOD FLOOR (REPAIR-NAIL)
204	OPEN	-	-	-	-	-	-	-	-	DW	PTD	PLWD	PTD	DW	PTD	SCOFFIT AT HAYLOFT PLWD ONLY
300	HAYLOFT	WD	PTD	-	-	-	-	-	-	-	-	-	-	DW	PTD	

### LEGEND

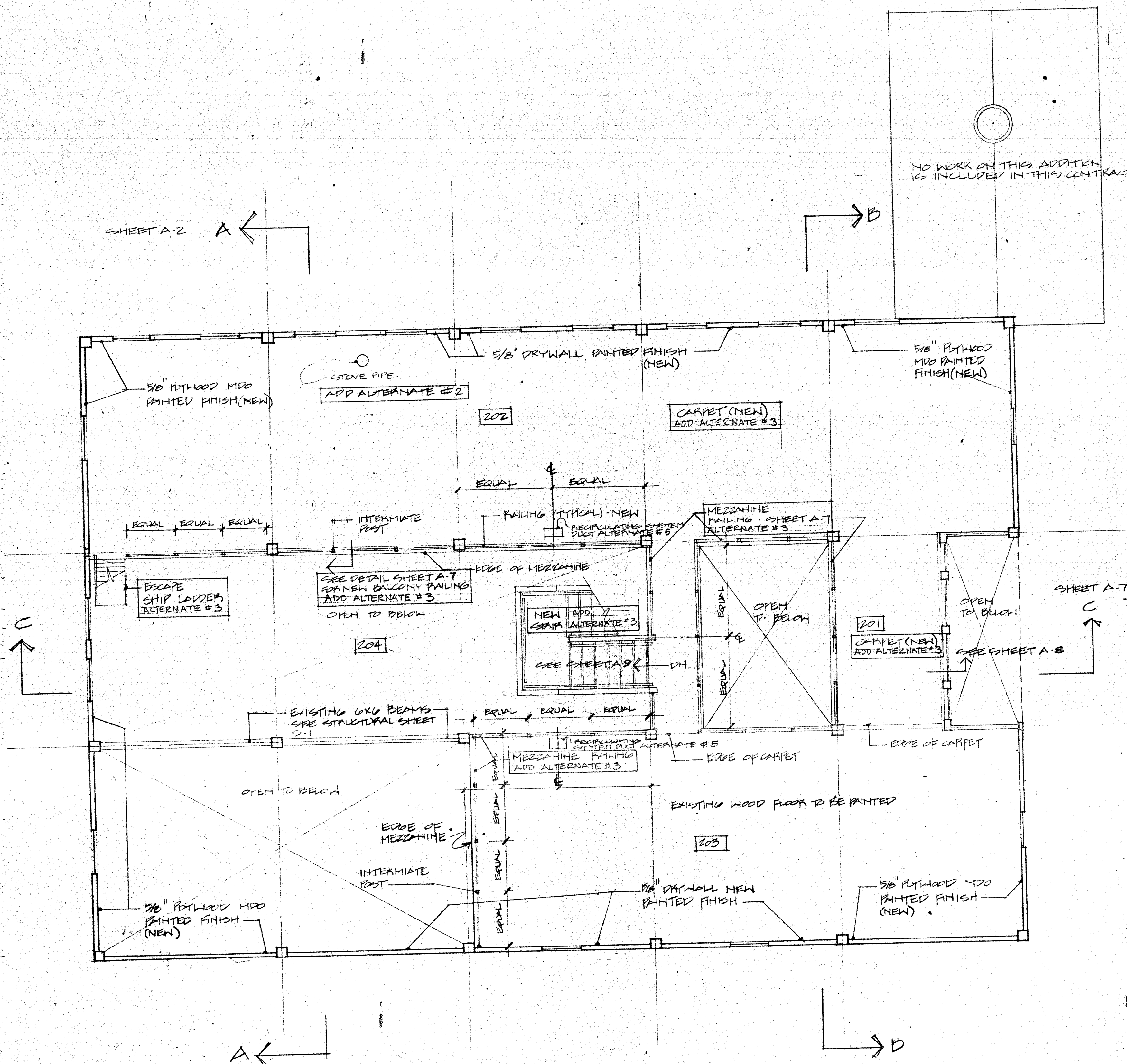
PV - PAVERS	PLWD - PLYWOOD	SV - SHEET VINYL
WD - WOOD	CO - COORD MAT	RL - RAILING (ALUM.)
PTD - PAINTED	RB - RUBBER TILE	
CLP - CLAPBOARD	CP - CARPET	
GL - GLASS	DW - DRY WALL	

SHEET A-4		COLE AND GOYETTE	
		ARCHITECTS AND PLANNERS INC. 540 FRANKLIN STREET CAMBRIDGE, MASSACHUSETTS TELEPHONE: 617-491-5882	
DATE 1/17/80 SCALE 1/4" = 1'-0" DRAWN BY M.B. CHECKED BY M.C.		REV. DATE DESCRIPTION DRAWN APP'D	
COORDINATION		DEPARTMENT OF THE AIR FORCE 324TH AIR BASE GROUP ESO AFSC HANSCOM AIR FORCE BASE, MA. 01731	
SAFETY CHIEF O & M		BASE CIVIL ENGINEERING DIVISION	
SECURITY CONTRACT PGM		YA HOSPITAL COLLEGE COURSE CLUBHOUSE	
COMMUNICATION CONST. MGMT.		HAYLOFT FLOOR PLAN - FINISH SCHEDULE	
FIRE CHIEF COR CON ENGR		CHIEF ENGINEERING SECT	CHIEF ENGR. & ENV. BRANCH
MEDICAL SRV ENVIRONMENTAL		ARCH	CIVIL
USING AGENCY ENERGY CONSV		ELEC.	MECH.
MCOIC OF DRAFTING		DESIGNED BY	DRAWN BY
		SCALE	DATE

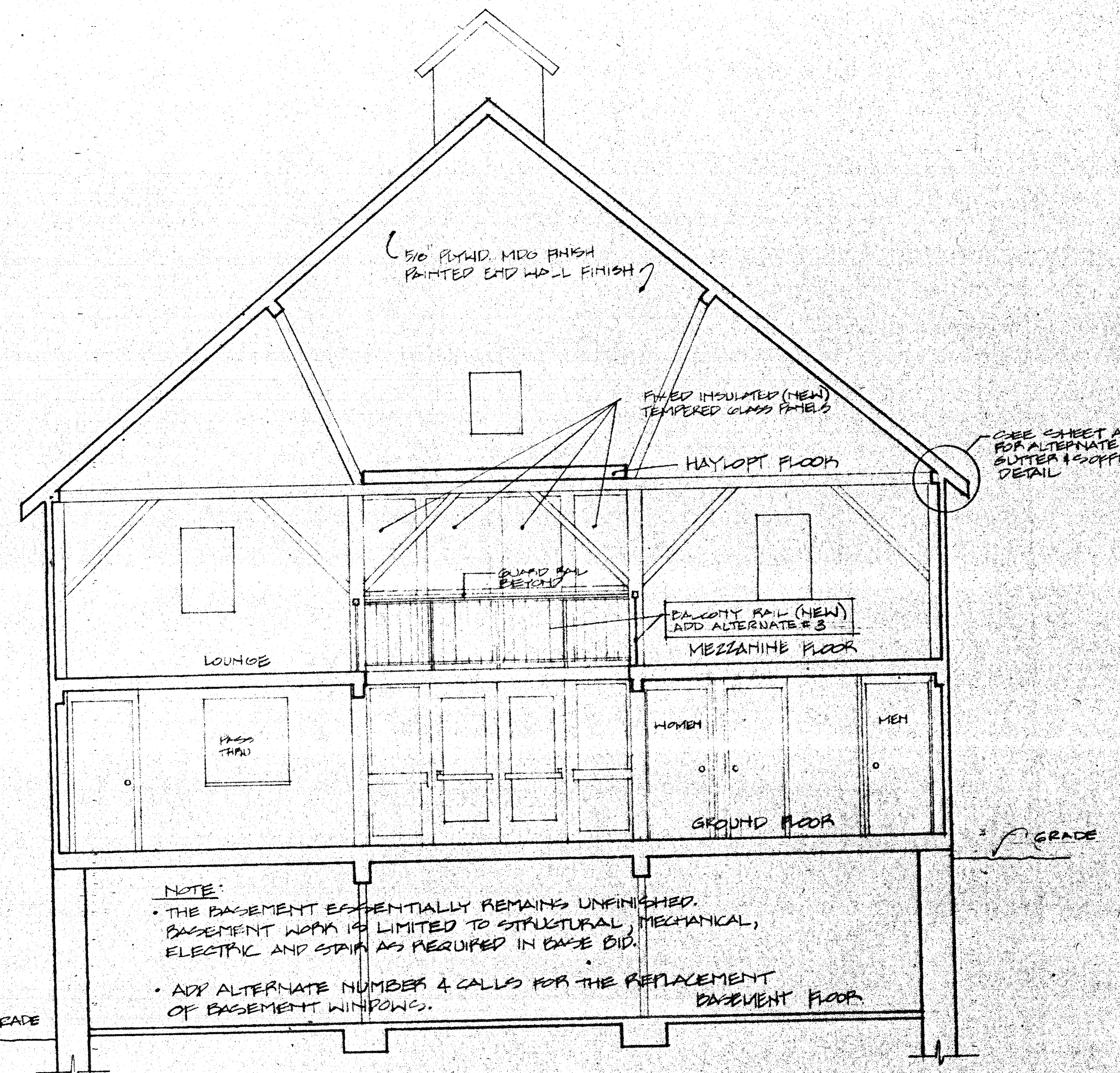
1986  
1986  
1986

85-006 P  
No 2 #  
4 of 17





MEZZANINE FLOOR PLAN - SCALE 1/4"=1'-0"



SECTION B-B  
SCALE 1/4"=1'-0"

<b>SHEET A-3</b>				<b>COLE AND GOYETTE</b> ARCHITECTS AND PLANNERS INC. 540 FRANKLIN STREET CAMBRIDGE, MASSACHUSETTS TELEPHONE: 617-451-5502	
		DATE: 1/11/86 SCALE: 1/4"=1'-0" DRAWN BY: S.S. CHECKED BY: H.G. REVISED: 4/10/86			
DEPARTMENT OF THE AIR FORCE 24TH AIR BASE GROUP (S) AFB HANSCOM AIR FORCE BASE, MA 01731 <b>BASE CIVIL ENGINEERING DIVISION</b>		VA HOSPITAL COLFORDS CLUB HOUSE MEZZANINE FLOOR PLAN - SECTION B-B			
<b>COORDINATION</b>					
SAFETY	CHIEF O & M				
SECURITY	CONTRACT PGM				
COMMUNICATION	CONST. MGMT.	CHIEF ENGINEERING SECT.	CHIEF ENGR. & ENV. BRANCH	BASE CIVIL ENGINEER	
FIRE CHIEF	COR. CON. ENGR.	ARCH	CIVIL	PROJECT NUMBER	
MEDICAL SRV	ENVIRONMENTAL	ELEC	MECH	DRAWING NUMBER	
USING AGENCY	ENERGY CONSV	DESIGNED BY	DRAWN BY	FILE NUMBER	
NOIC OF DRAFTING	1	SCALE	DATE	SHEET 3 OF 17	

HOSP-DIRECTOR

ENTERED MAR 17 2011  
 3 of 4  
 # 85-0068  
 No 8