

STATEMENT OF WORK  
FOR  
KAYENTA HEALTH CENTER  
ADA DOOR OPENER PROJECTS  
AT  
KAYENTA HEALTH CARE CENTER  
KAYENTA, ARIZONA

April 5, 2023

KAYENTA SERVICE UNIT

1. **Introduction:**

- 1.1. Kayenta Health Center (KHC) is located south of Arizona State Highway 160 at milepost 364.3. The nearest town is a two hour drive. The Kayenta Service Unit serves a population of ~20,000 people spread across a remote and sparsely populated area. Services are provided to ~200 patients each day. KHC provides walk-in clinics and a 24 hour, 7 days per week emergency room. KHC requires professional services and expertise to perform the following work:
- a. Installation of twenty-seven ADA door locations

2. **PROJECT BACKGROUND**

- 2.1. Kayenta Health Center currently have need for ADA door openers throughout building.
- 2.2. Some doors are fire/smoke door rated and need to comply with NFPA.
- 2.3. This health facility project requires the expertise of a responsible contractor.
- 2.4. Some door entries may require two sets of ADA door openers.

3. **PROJECT DESCRIPTION:**

- 3.1. The contractor shall prepare a proposal, and upon award, shall provide an accurate timeline to complete project and following will perform the work to completion.
- 3.2. The project includes the following work:
  - a. Modifications and/or replacements need to maintain and not degrade the fire or smoke rating of the door.
  - b. All hardware and door replacements need to be tested and certified (Ex. UL certified)
  - c. Existing doors have panic hardware, handicap door handles, electronic mechanical access systems (striker), and magnet locks.
  - d. Doors that need to be replaced will require same or higher grade, and solid core or metal doors need to be replaced with same type.
  - e. Contractor is to dispose of debris at approved EPA disposal location.
  - f. Fire and smoke door installation/modifications need to pass fire and smoke door criteria inspections.
  - g. Remove door closures as needed, ADA door openers have built in door closures.
  - h. Prepare existing door to place new Handicap Door Openers
  - i. Existing doors are lockable and some doors will need striker or solenoid to work with ADA opener.
  - j. KSU Maintenance to install 120 volt power to Handicap Door Opener location
  - k. Contractor to furnish and install new Handicap Door Openers with two push button.
    - i. Doors are either single door or double door, double doors require two ADA door openers.
  - l. Test and certify Handicap Door Openers that will work with electronic access control.
  - m. Test and certify doors open and close properly

4. **CRITERIA:**

- 4.1. Codes and Standards: the contractor shall perform work in accordance with best common practices and standards;
  - a. Safety and Hazard Awareness (PPE, jobs specific hazards, Electrical isolation).
  - b. NFPA criteria
  - c. The Joint Commission standards and regulations
  - d. Door specification must meet government FGI, Federal Guideline Institute.

5. **GENERAL REQUIREMENTS:**

- 5.1. Contractor shall develop a set plan and accurate timeline to present to KHC project representative prior to the project start date.
- 5.2. Contractor is responsible for furnishing tools, materials and equipment to complete the project.
- 5.3. A report and walk through of the work area will be necessary after completion of project.
- 5.4. Work area should be well kept and free of trash and debris after work days.
- 5.5. Finished work/product needs to function properly, be pristine and professional.
- 5.6. The contractor shall perform work between the hours of 8:00am and 5:00pm Monday through Friday excluding Federal Holidays, weekend work and afterhours work may be necessary.
- 5.7. Work hours need to be discussed and agreed upon with facility (contract officer, facility manager, security and ETC.).
- 5.8. The contractor shall furnish a schedule of the dates agreed upon with the project officer and the facility manager at least two weeks in advance.
- 5.9. Any foreseen or unplanned costs, workhours or changes that will effect or incur extra costs to KSU, needs to be brought to the attention of the KHC project representative before proceeding with this matter.
- 5.10. The Contractor must be mindful of keeping normal business and patient care activities uninterrupted.
- 5.11. Contractor is expected to be professional and efficient with his work.

6. **SPECIAL REQUIREMENTS**

- 6.1. Proper demolition, and construction work methods in a health facility environment is needed to minimize construction and demolition material contamination to the department and facility.
- 6.2. HVAC vents, exhaust hoods, and openings need to be covered and sealed to prevent fumes, dust, odors and other construction related activity contamination from escaping.
- 6.3. Fire safety systems such as sprinklers and smoke alarms need to be blocked, covered and/or protected to prevent damage and activation.
- 6.4. Contractor is required to obtain an identification badge (ID) before starting work at KSU. \*This process can take up to 3 hours depending on the number of workers.
- 6.5. Contractor shall wear ID badge on KSU premises and check in with security every day.
- 6.6. Contractor to abide any latest COVID-19 requirements.

7. **ATTACHEMENTS**

- 7.1. ADA Door Opener List
- 7.2. Doors 1G-202
- 7.3. Doors 1G-203
- 7.4. Doors 2C-201
- 7.5. Doors 1D-220
- 7.6. Door Location Floor Plan.

8. **Period of Performance**

- 8.1. The period of performance shall commence immediately upon award.

9. **Contact information:**

- 9.1. Desmond Jones, Facility Manager, (928) 697-4375
- 9.2. Vernon Begay, Maintenance Supervisor, (928) 697-5194

10. **Warranty**

- 10.1 Workmanship warranty one years.
- 10.2 Equipment warranty by manufacture, finish certificates.

## 7.1 Door Improvement List

	Room #		Door Tag	Fire Door	Electronic Door Access	P-Panic H-Handle C-Closure S-Electric Strike M-Mag Lock T-Vertical Rod Latch	Door Work Request
1	1G-203	G-Wing West			X	P, C,	ADA Opener-Double
2	1G-203B	G-Wing West				C	ADA Opener-Double
3	1G-202	G-Wing	166399	2 Hour	X	P, H, C, M, T	ADA Opener-Double
4	1A-201	Physical T.				H, C	ADA Opener Single
5	1B-202A	Physical T.	166314	2 Hour	X	H, C, S	ADA Opener-Single
6	1C-205B	Navajo Nation			X	H, C, S	ADA Opener-Single
7	1C-021	OEHE Entrance			X	H, C, S	ADA Opener-Single
8	1D-220	ED Entrance	166359	1 Hour	X	P, C, M	ADA Opener-Double
9	1D-220B	ED Entrance	166366	1 Hour		H, C	ADA Opener-Double
10	1D-203	Radiology	166355	1 Hour	X	H, C, S	ADA Opener-Single
11	1D-402	Pharmacy Waiting		1 Hour	X	P, C, M, T	ADA Opener-Double
12	1E-201	Patient Reg.	166343	1 Hour	X	P, C, M, T	ADA Opener-Double
13	1F-201	Outpatient	166333	1 Hour	X	P, C, M, T	ADA Opener-Double
14	1F-202	Outpatient			X	P, H, C, S	ADA Opener-Single
15	1F-210	Outpatient			X	P, H, C, S	ADA Opener-Single
16	2E-202	Conference		1 Hour	X	P, C, M, T	ADA Opener-Double
17	2E-201	Conference		1 Hour	X	P, C, M, T	ADA Opener-Double
18	2D-210	Inpatient	166261	2 Hour	X	P, C, M, T	ADA Opener-Double
19	2B-001	Exec. Conf.			X	H, C, S	ADA Opener-Single
20	2C-201	Administration	166307	1 Hour	X	P, H, C, S	ADA Opener-Single
21	2C-201A	Administration			X	H, C, S	ADA Opener-Single
22	2C-017	Human Resources			X	P, H, C, S	ADA Opener-Single
23	2C-010	Human Resource			X	H, C, S	ADA Opener-Single
24	2D-212B	Inpatient	166267	2 Hour	X	P, C, M, T	ADA Opener-Double
25	2D-214	Inpatient	166243	1 Hour		P, C, T	ADA Opener-Double
26	2D-215	Inpatient				C	ADA Opener-Double
27	1D-209	ED Waiting	163357	1 Hour	X	H, P, C, T	ADA Opener-Double

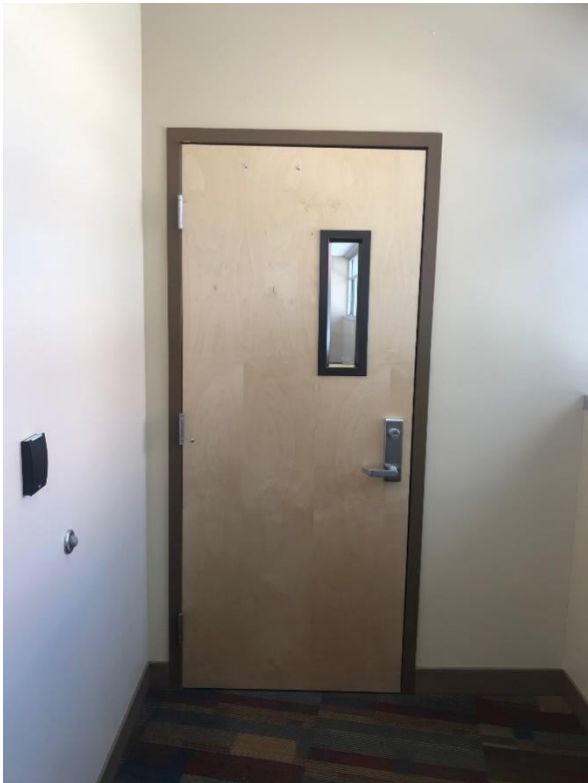
## 7.2 Doors 1G-202



## 7.3 Doors 1G-203



**7.4 Doors 2C-201**

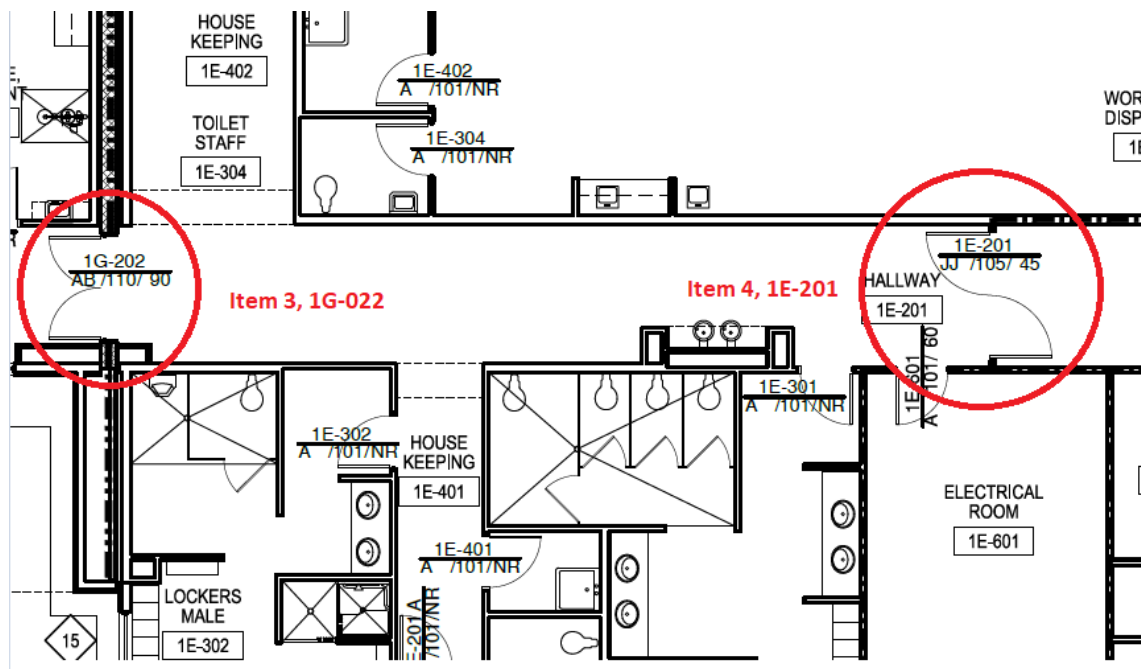
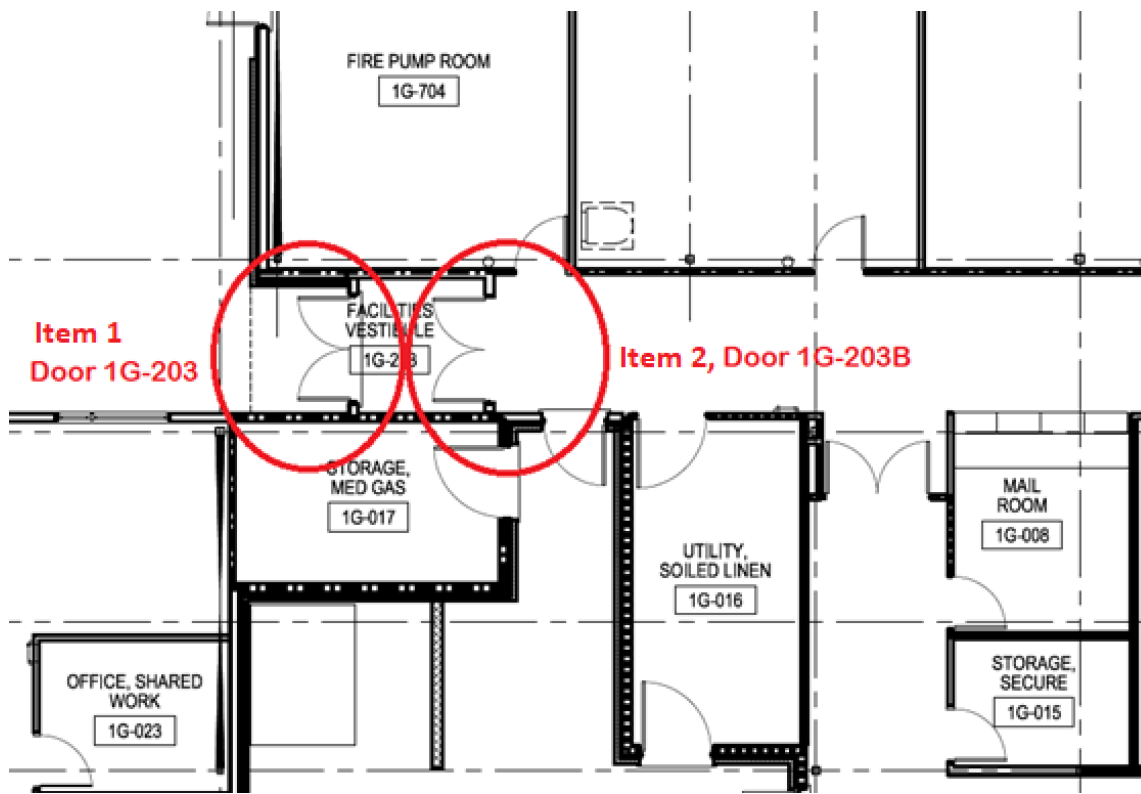


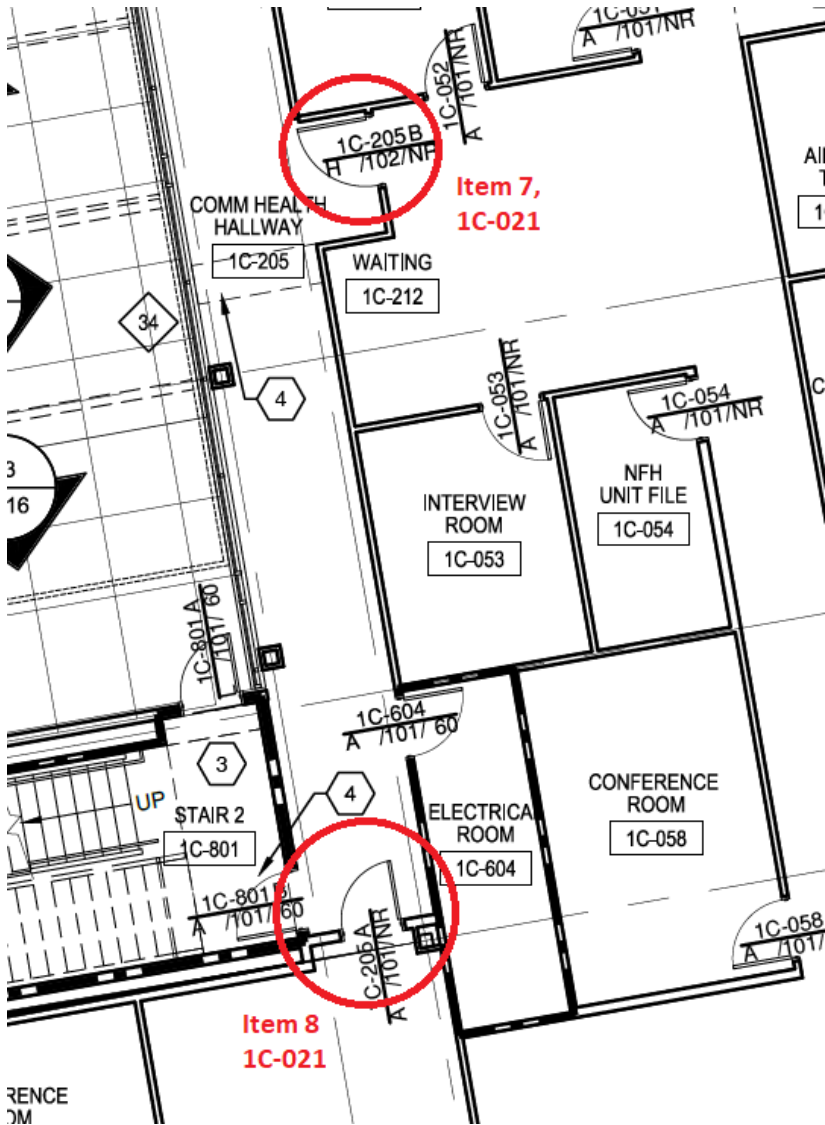
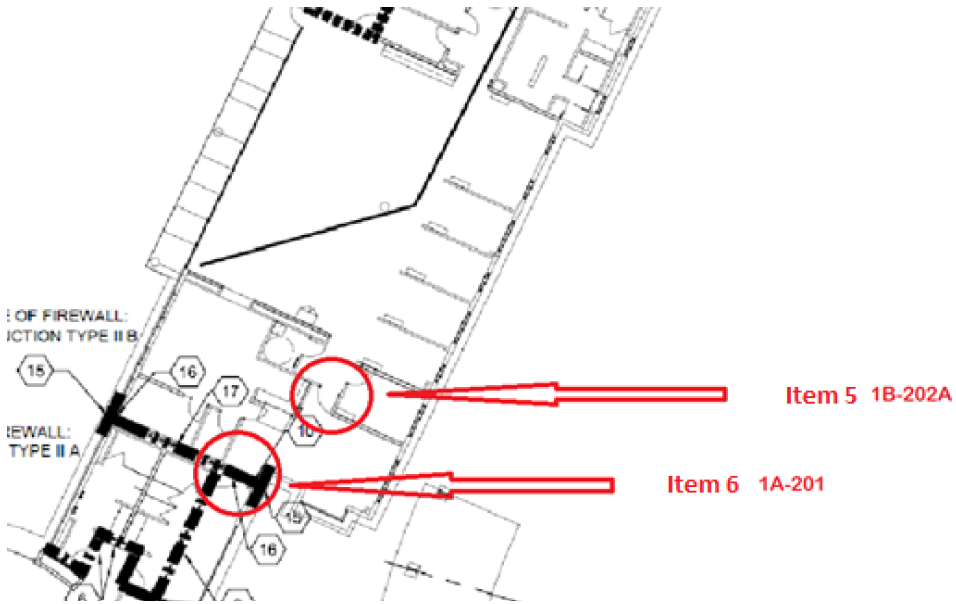
**7.5 Doors 1D-220**

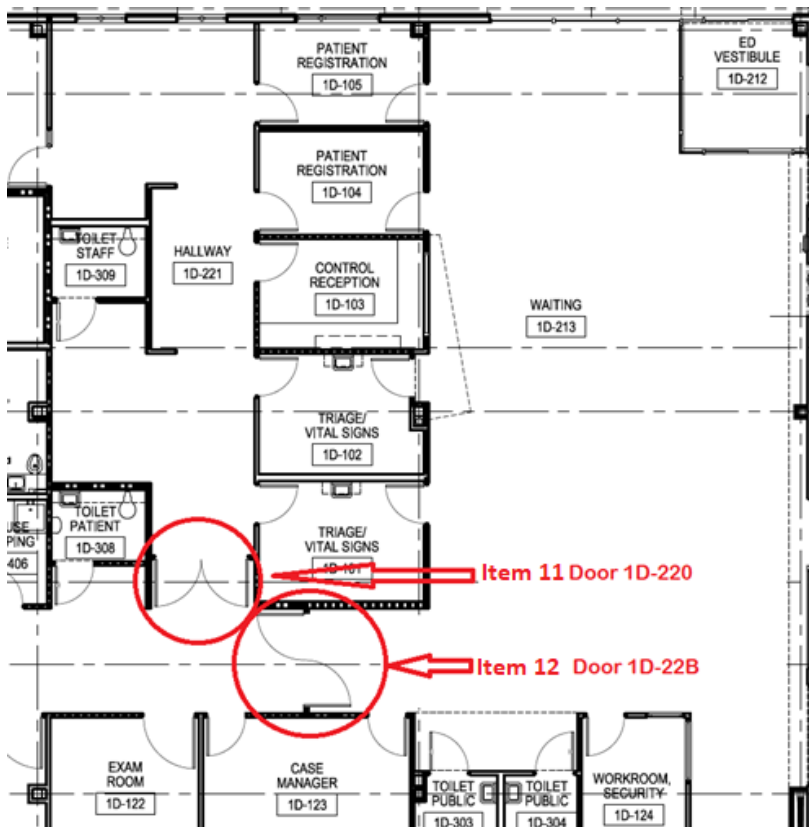
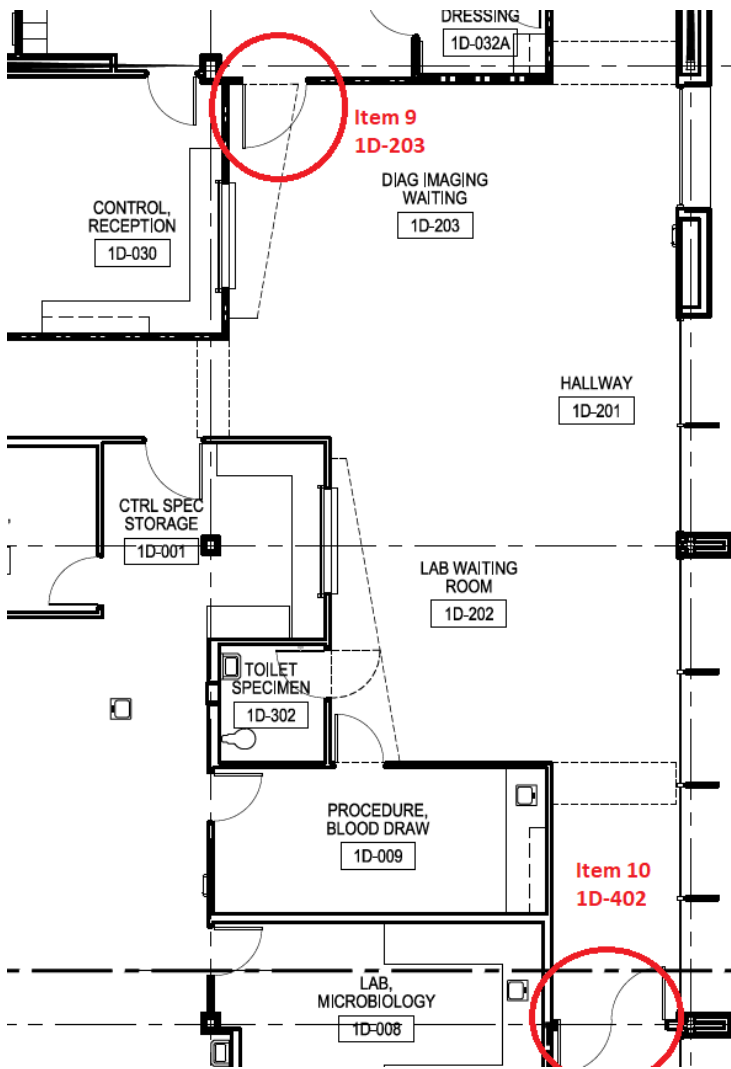


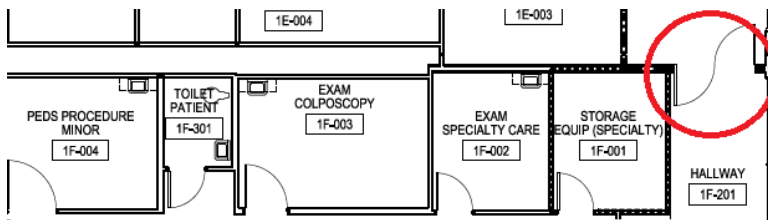


**Figure 7.6: Door Location Floor Plans:**

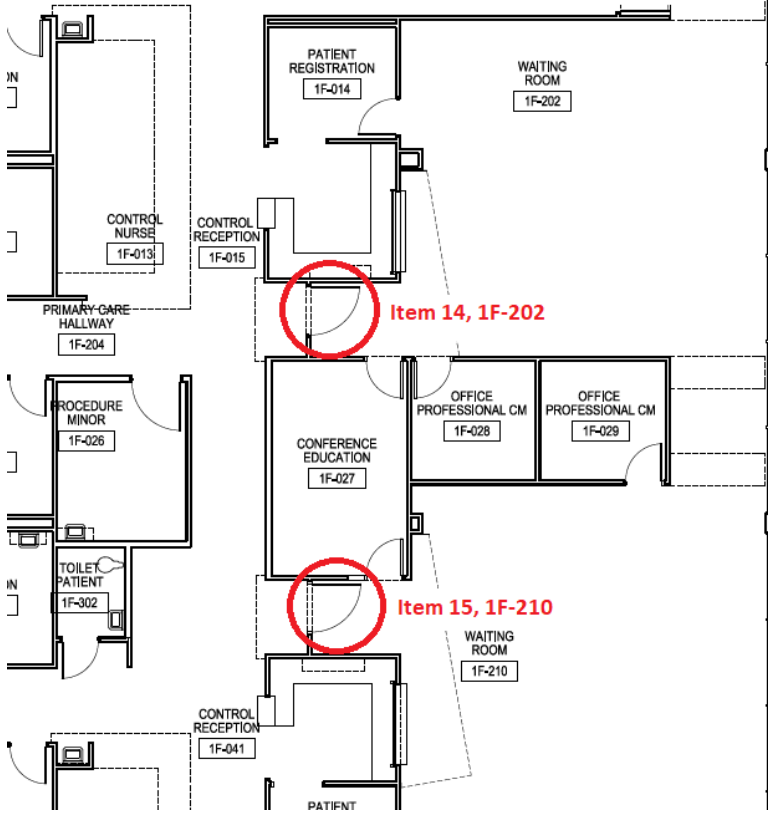






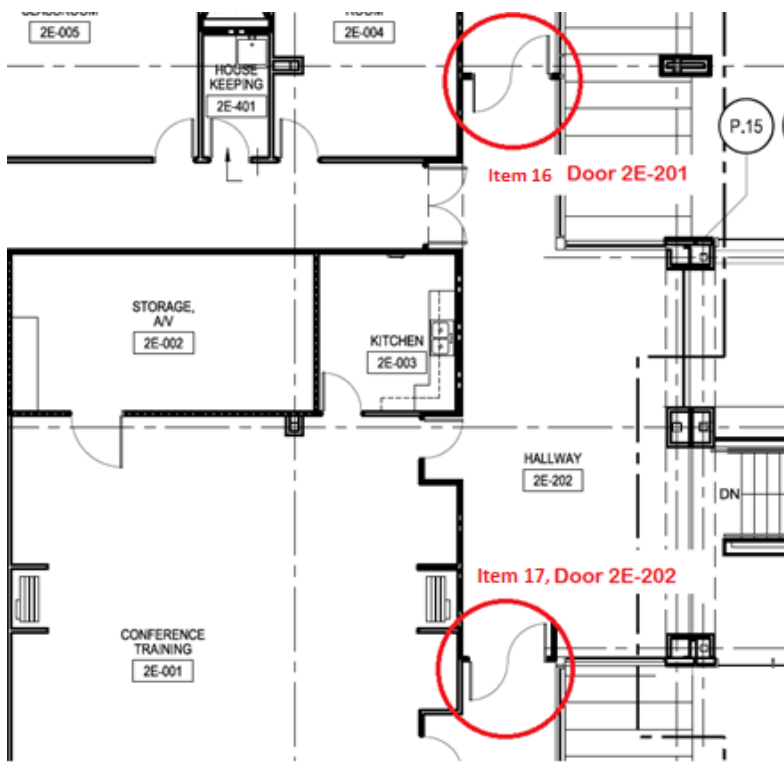


Item 14, 1F-201



Item 14, 1F-202

Item 15, 1F-210



Item 16 Door 2E-201

Item 17, Door 2E-202

