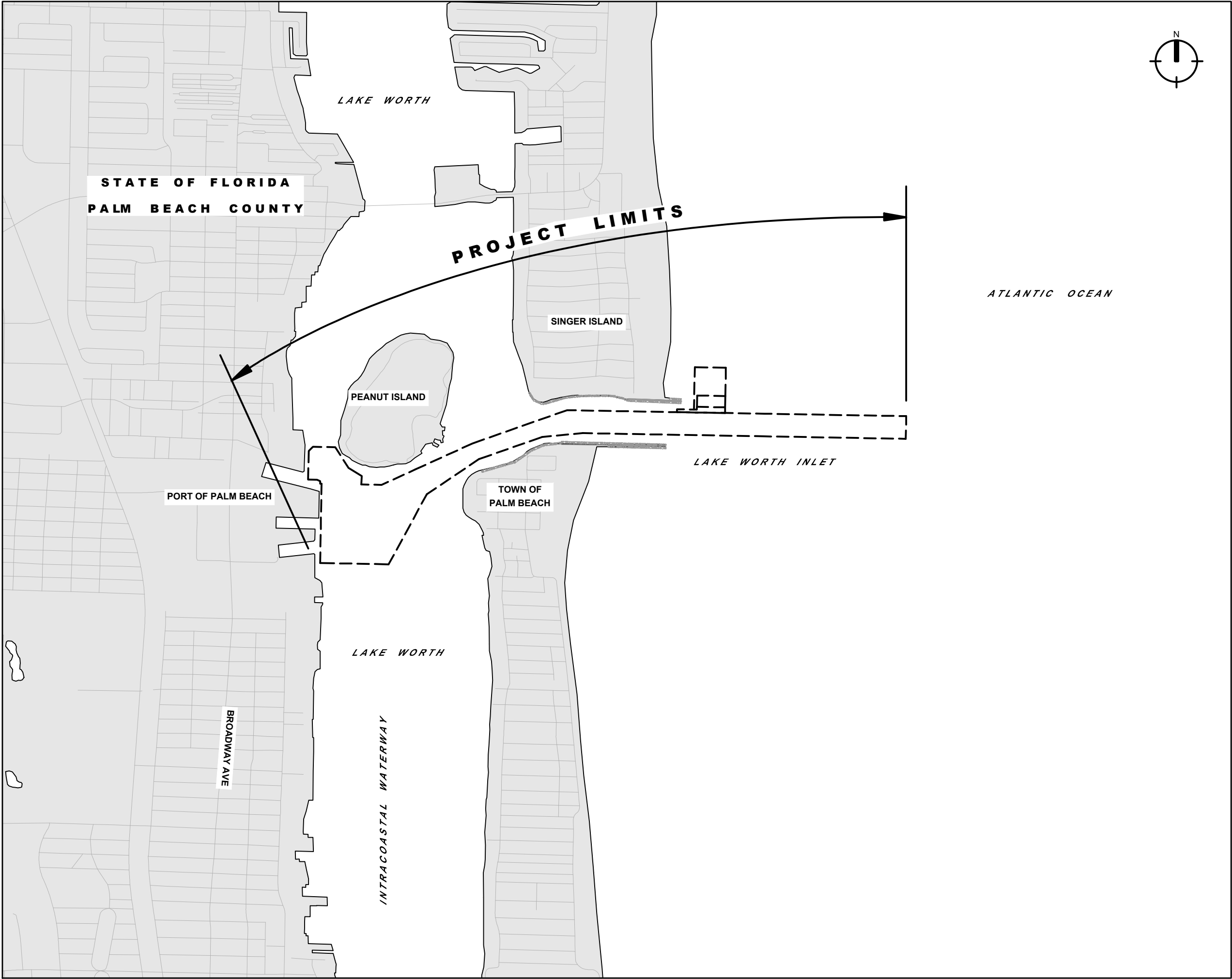




PALM BEACH HARBOR MAINTENANCE DREDGING 33-FOOT PROJECT
ENTRANCE CHANNEL AND SETTLING BASIN
PALM BEACH COUNTY, FLORIDA

SHEET INDEX	
SHEET ID	SHEET TITLE
	GENERAL
G-01	COVER AND SHEET INDEX
G-02	ABBREVIATIONS, SYMBOLS AND, SURVEY NOTES
G-03	PROJECT OVERVIEW
G-04	CHANNEL CONTROL DATA
	CIVIL
C-01	DREDGING PLAN - STA. 25+00 E.C. TO STA. 58+00 E.C.
C-02	DREDGING PLAN - STA. 58+00 E.C. TO STA. 86+00 CUT-2
C-03	DREDGING PLAN - STA. 86+00 CUT-2 TO STA. 22+50 T.B.
C-04	DREDGING CROSS SECTIONS E.C.
C-05	BEACH DISPOSAL - R-76 TO R-78
C-06	BEACH DISPOSAL - R-78 TO R-81
C-07	BEACH DISPOSAL - TYPICAL CROSS SECTION
C-08	NEARSHORE DISPOSAL



SOLICITATION NO.:W912EP23B0002

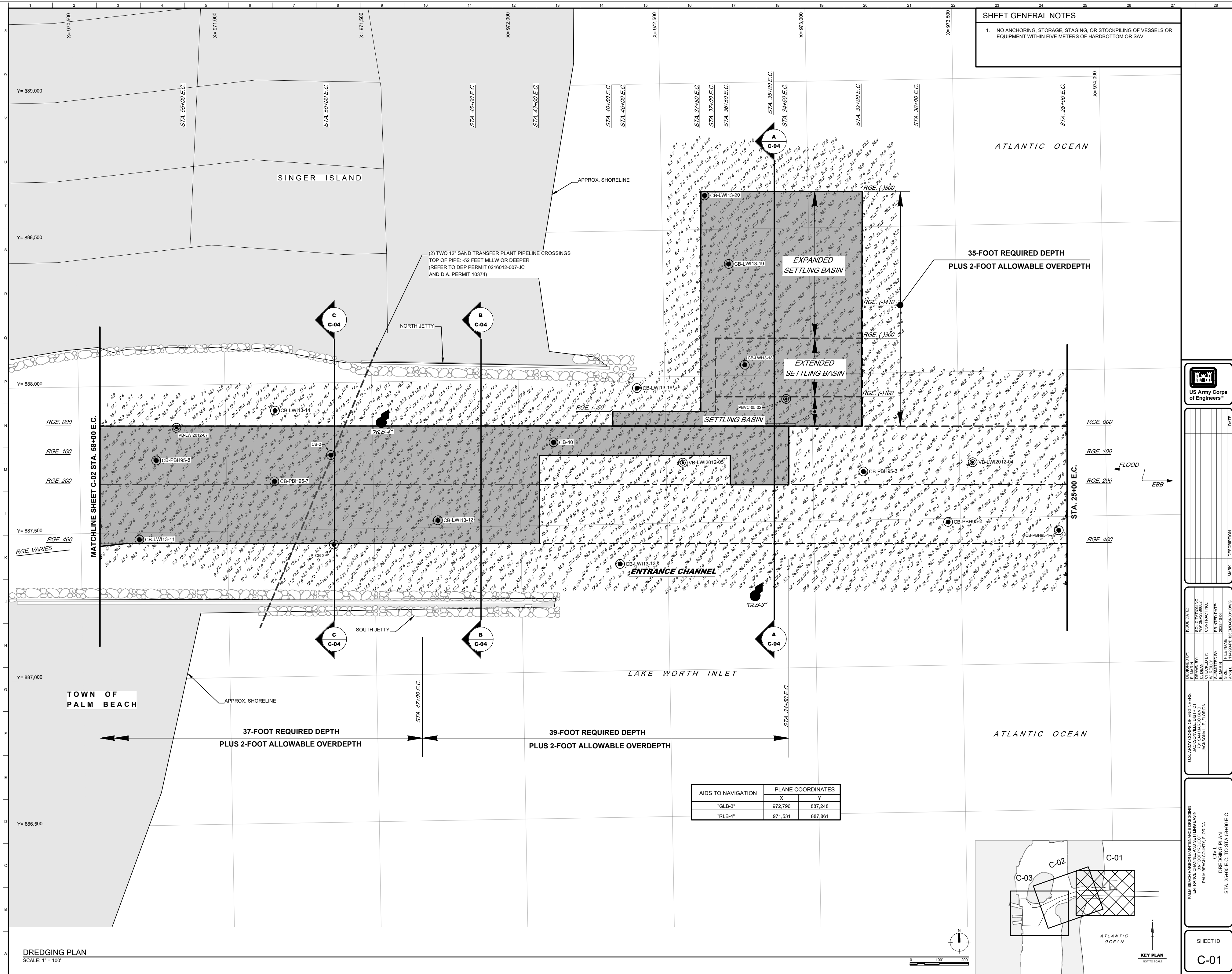
[illegible]

U.S. ARMY CORPS OF ENGINEERS JACKSONVILLE DISTRICT 701 SAN MARCO BLVD JACKSONVILLE, FLORIDA	DESIGNED BY: D. SYPLA CHECKED BY: D. DEAN W. RELLY SUBMITTED BY: I. HEASUSLER	SOLICITATION NO.: W12F2720002 CONTRACT NO.: PRINTED DATE: 2022-10-06	ISSUE DATE: FILE NAME: SIZE:
--	---	--	------------------------------------

PALM BEACH HARBOR MAINTENANCE DREDGING
 ENTRANCE CHANNEL AND SETTLING BASIN
 33-FOOT PROJECT
 PALM BEACH COUNTY, FLORIDA
 GENERAL
 COVER AND SHEET INDEX

SHEET ID

G-01





SHEET GENERAL NOTES

1. NO ANCHORING, STORAGE, STAGING, OR STOCKPILING OF VESSELS OR EQUIPMENT WITHIN 5 METERS OF HARBOTTOM OR SAV.



MARK	DESCRIPTION	DATE

DESIGNED BY: E. MARK	ISSUE DATE: 1/2/2024
DRAWN BY: J. W. KELLY	SOLUTION NO.: 14288-PB-ENG-DC-002-DWG
CHECKED BY: W. KELLY	CONTRACT NO.:
APPROVED BY: E. MARK	PERMIT DATE: 1/2/2024
FILE NAME: 14288-PB-ENG-DC-002-DWG	

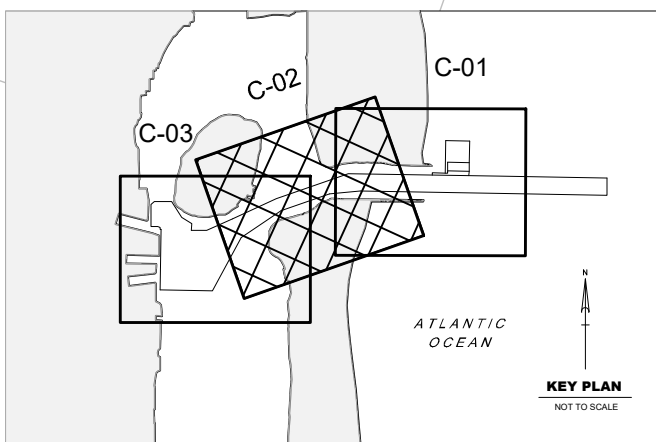
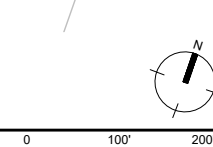
U.S. ARMY CORPS OF ENGINEERS
JACKSONVILLE DISTRICT
JACKSONVILLE, FLORIDA

PALM BEACH HARBOR MAINTENANCE DREDGING
ENTRANCE CHANNEL AND SETTLING BASIN
PALM BEACH COUNTY, FLORIDA

CIVIL
DREDGING PLAN
STA. 58+00 E.C. TO STA. 86+00 CUT-2

SHEET ID
C-02

DREDGING PLAN
SCALE: 1" = 100'



1. NO ANCHORING, STORAGE, STAGING, OR STOCKPILING OF VESSELS OR EQUIPMENT WITHIN 5 METERS OF HARDBOTTOM OR SAV.

PEANUT ISLAND

P.I. STA. 0+00.00 T.B.
P.I. STA. 87+92.96 CU

CUT-2

TOWN OF
PALM BEACH



US Army Corps
of Engineers®

[illegible]

U.S. ARMY CORPS OF ENGINEERS		DESIGNED BY:	ISSUE DATE:
JACKSONVILLE DISTRICT		E. MARIN	
701 SAN MARCO BLVD		DRAWN BY:	SOLUTION NO.:
JACKSONVILLE, FLORIDA		C. DEAN	HW12P2358002
		CHECKED BY:	CONTRACT NO.:
		SUBMITTED BY:	PRINTED DATE:
		E. MARIN	2022-10-08
		FILE NAME:	
		SIZE:	
		ANSI/F	114129.PBH31EWD-CN003.DWG

PALM BEACH HARBOR MAINTENANCE DREDGING
ENTRANCE CHANNEL AND SETTLING BASIN
33-FOOT PROJECT
PALM BEACH COUNTY, FLORIDA

CIVIL
DREDGING PLAN

STA. 86+00 CUT-2 TO STA. 22+50 T.B.

SHEET ID
C-03

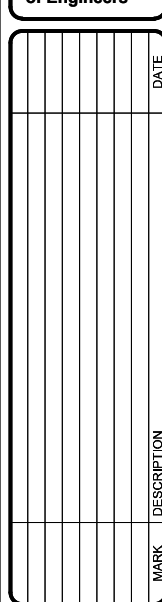
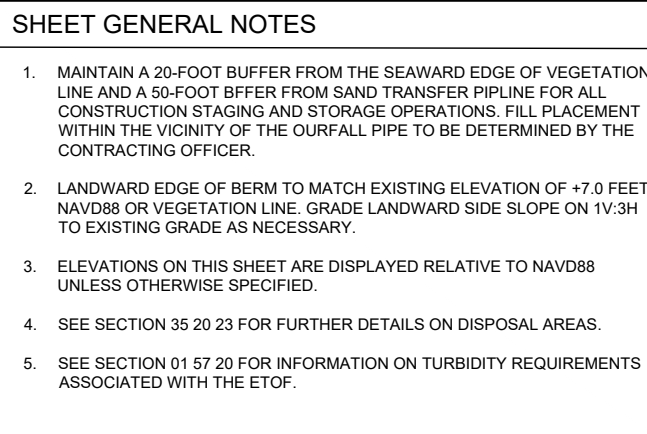
AIDS TO NAVIGATION	PLANE COORDINATES	
	X	Y
"LT-1"	966,427	885,014
"LT-11"	967,954	886,310
"LT-12"	966,907	886,650
"LT-13"	967,311	885,024
"DBN-43"	966,258	887,497

**OPEN WATER STAGING AREA
(SEE NOTE 1)**

IN-WATER STAGING AREA COORDINATES		
CORNER	PLANE COORDINATES (NAD83(90))	
	X (EASTING)	Y (NORTHING)
NW	966,615.85	885,072.97
NE	967,296.82	885,094.64
SW	966,655.97	884,825.88
SE	967,272.96	884,907.16

DREDGING PLAN
SCALE: 1" = 100'

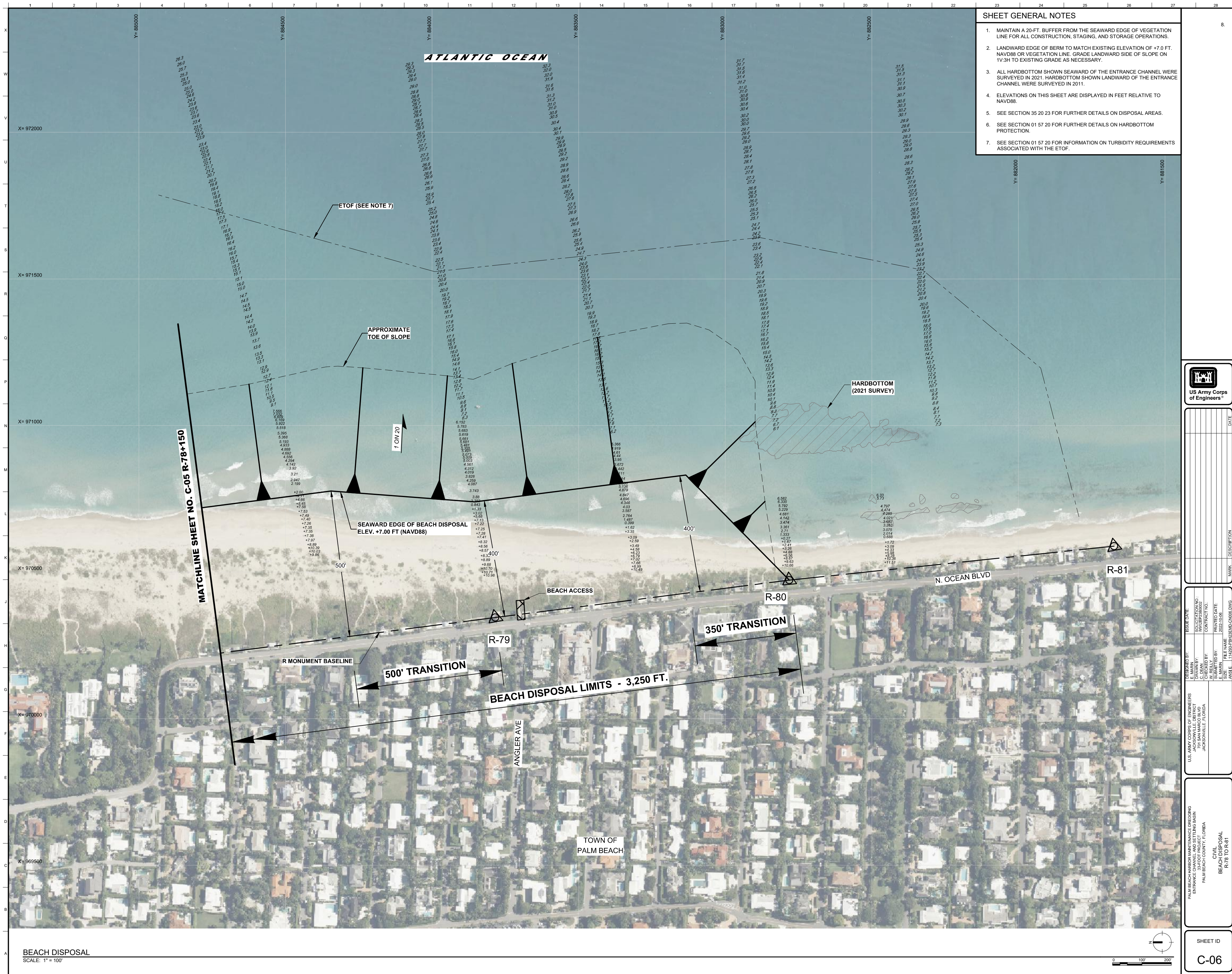
KEY PLAN



U.S. ARMY CORPS OF ENGINEERS JAGT ATTN: SA 701 SAN MARCO BLVD JACKSONVILLE, FLORIDA	DESIGNED BY: E. MARIN	ISSUE DATE:
	DRAWN BY: C. DEARDORF	SOLICITATION NO.: HWZEE236002
	CHECKED BY: W. R. KELLY	CONTRACT NO.:
	SUBMITTED BY: E. MARIN	PRINTED DATE:
	DATE:	
	FILE NAME: S&S DECIMAL	FILE NO.:
	ANSF:	FINFIDE PPH C.DWG.

PALM BEACH HARBOR MAINTENANCE DREDGING
ENTRANCE CHANNEL AND SETTLING BASIN
33-FOOT PROJECT
PALM BEACH COUNTY, FLORIDA

CIVIL
BEACH DISPOSAL
R-76 TO R-78



SHEET GENERAL NOTES

1. MAINTAIN A 20-FT. BUFFER FROM THE SEAWARD EDGE OF VEGETATION LINE FOR ALL CONSTRUCTION, STAGING, AND STORAGE OPERATIONS.
2. LANDWARD EDGE OF BERM TO MATCH EXISTING ELEVATION OF +7.0 FT. NAVD88 OR VEGETATION LINE. GRADE LANDWARD SIDE OF SLOPE ON 1V:3H TO EXISTING GRADE AS NECESSARY.
3. ALL HARDBOTTOM SHOWN SEAWARD OF THE ENTRANCE CHANNEL WERE SURVEYED IN 2021. HARDBOTTOM SHOWN LANDWARD OF THE ENTRANCE CHANNEL WERE SURVEYED IN 2011.
4. ELEVATIONS ON THIS SHEET ARE DISPLAYED IN FEET RELATIVE TO NAVD88.
5. SEE SECTION 35 20 23 FOR FURTHER DETAILS ON DISPOSAL AREAS.
6. SEE SECTION 01 57 20 FOR FURTHER DETAILS ON HARDBOTTOM PROTECTION.
7. SEE SECTION 01 57 20 FOR INFORMATION ON TURBIDITY REQUIREMENTS ASSOCIATED WITH THE ETOP.



US Army Corps
of Engineers®

[illegible]

U.S. ARMY CORPS OF ENGINEERS JACKSONVILLE DISTRICT 701 SAN MARCO BLVD JACKSONVILLE, FLORIDA	DESIGNED BY:	E. MARIN	ISSUE DATE:	
	DRAWN BY:		SOLUTION NO.:	WVJEP2-18002
	CHECKED BY:		CONTRACT NO.:	
	W. REILLY		PRINTED DATE:	2022-10-06
	SUBMITTED BY:	E. MARIN	FILE NAME:	
	SIZE:			

PALM BEACH HARBOR MAINTENANCE DREDGING
ENTRANCE CHANNEL AND SETTLING BASIN
33-FOOT PROJECT
PALM BEACH COUNTY, FLORIDA

SHEET ID
C-06

[illegible]

DESIGNED BY: E. MARIN	ISSUE DATE:
DRAWN BY: C. DEAN	SOLICITATION NO.: W912EP2350002
CHECKED BY: W. RELLY	CONTRACT NO.:
SUBMITTED BY:	PRINTED DATE:
SIZE: E. MARIN	DATE: 8-1-00
FILE NAME:	

PALM BEACH HARBOR MAINTENANCE DREDGING
ENTRANCE CHANNEL AND SETTLING BASIN
33-FOOT PROJECT
PALM BEACH COUNTY, FLORIDA

CIVIL
BEACH DISPOSAL
TYPICAL CROSS SECTION

