

PLAN LEGEND	
SYMBOL	DESCRIPTION
	RECEPTACLE, DUPLEX, NEMA 5-20R, 18" AFF, UON
	RECEPTACLE, QUADRUPLX, NEMA 5-20R, 18" AFF, UON, 18" AFF, UON
	RECEPTACLE, SINGLE, NEMA 5-20R, 18" AFF, UON
	SPECIAL PURPOSE RECEPTACLE, RATING AS INDICATED
	FLOOR BOX, TWO GANG RECESSED, FLUSH MTD. PROVIDE ONE NEMA 5-20R DUPLEX RECEPTACLE OR SPECIAL PURPOSE RECEPTACLE FOR DECIGATED POWER AS REQUIRED.
	FLOOR BOX, TWO GANG, RECESSED, FLUSH MTD. PROVIDE TELE/DATA DEVICE AS INDICATED AND REQUIRED.
	JUNCTION BOX
	FUSED DISCONNECT SWITCH UON, NEMA ENCLOSURE AS REQUIRED
	MOTOR STARTER OR LIGHTING CONTACTOR, SURFACE MOUNTED
	PANELBOARD, SURFACE MOUNTED
	PANELBOARD, RECESSED
	KEYED NOTE, NUMBER IN POSITION "1" INDICATES NOTE NUMBER
	SWITCH, TOGGLE, WALL MOUNTED, 20A., 120/277V RATED (AC ONLY), SINGLE POLE SINGLE THROW. 48" AFF, UON
	SWITCH, TOGGLE, WALL MOUNTED, 20A., 120/277V RATED (AC ONLY), THREE-WAY. 48" AFF, UON
	SWITCH, TOGGLE, WALL MOUNTED, 20A., 120/277V RATED (AC ONLY), FOUR-WAY. MOUNT 48" AFF, UON
	SWITCH, MOTOR RATED, WITH THERMAL OVERLOADS, 48" AFF, UON
	SWITCH, DIMMER, 277V, 2000 WATT RATED, 48" AFF, UON
	CABLE TELEVISION JACK, 18" AFF, UON. INCLUDE ALL REQUIRED CABLE BETWEEN JACK AND THE BUILDING CABLE TV HUB. COORDINATE REQUIRED WORK WITH LOCAL CABLE TELEVISION PROVIDER.
	SWITCH, OCCUPANCY SENSOR, CEILING MOUNTED. WATT STOPPER W-2050A OR EQUAL
	SWITCH, OCCUPANCY SENSOR, WALL MOUNTED, 48" AFF, UON
	MOTOR LOAD AS INDICATED OR SCHEDULED
	WIRING CONTINUATION AS NOTED
	ROOM NUMBER IDENTIFIER, SEE DEPARTMENT INDEX
	CIRCUITAL HOMERUN TO PANEL OR CABINET NOTED. W = PANEL, X, Y, Z = CIRCUIT NUMBER. SYMBOL CAN BE USED WITH LONE CONDUIT OR WIRING SYMBOLS.
	DETAIL, SECTION, PLAN OR VIEW REFERENCE SYMBOL. IN POSITION "X" IS THE DETAIL IDENTIFIER LETTER. IN POSITION "Y" IS THE SHEET NUMBER WHERE DETAIL IS SHOWN.
	TELEPHONE/DATA OUTLET. PROVIDE 4" SQ TWO-GANG OUTLET BOX WITH SINGLE GANG PLASTER RING AT 18" AFF UON WITH 3/4" CONDUIT, CONCEALED IN WALL FROM OUTLET BOX TO ABOVE NEAREST CORRIDOR CEILING OR I.T. RM WITH CONDUIT END BUSHING. TELE/DATA JACKS AND CABLE SHALL BE PROVIDED BY CONTRACTOR. NUMBER INDICATES MIN TOTAL DEVICES ON MOUNTING PLATE. ADD MIN ONE SPARE BLANK DEVICE TO # INDICATED. NO # INDICATES ONE DEVICE REQUIRED (PLUS ONE SPARE).
	DEDICATED ANALOG TELEPHONE OUTLET. SAME REQUIREMENTS AS TELEPHONE/DATA OUTLET ABOVE, INCLUDING SPARE REQUIREMENT.

LIGHTING SYMBOLS LEGEND	
SYMBOL	DESCRIPTION
	2x4 FLUORESCENT, SURFACE OR PENDANT, CEILING MOUNTED
	2x4 FLUORESCENT FIXTURE, ON EMERGENCY GENERATOR POWER
	1x4 FLUORESCENT, SURFACE OR PENDANT, CEILING MOUNTED
	1x4 FLUORESCENT FIXTURE, ON EMERGENCY GENERATOR POWER
	COMPACT FLUORESCENT OR HID FIXTURE, SURFACE, PENDANT, OR RECESSED, CEILING MOUNTED
	COMPACT FLUORESCENT OR HID FIXTURE, ON EMERGENCY GENERATOR POWER
	COMPACT FLUORESCENT OR HID FIXTURE, WALL MOUNTED
	EXIT SIGN, LIGHTED, SURFACE OR PENDANT, CEILING MOUNTED. FACES ARE SOLID, ARROWS INDICATE EGRESS DIRECTION, ON EMERGENCY GENERATOR POWER
	HID FLOODLIGHT, GROUND MOUNTED

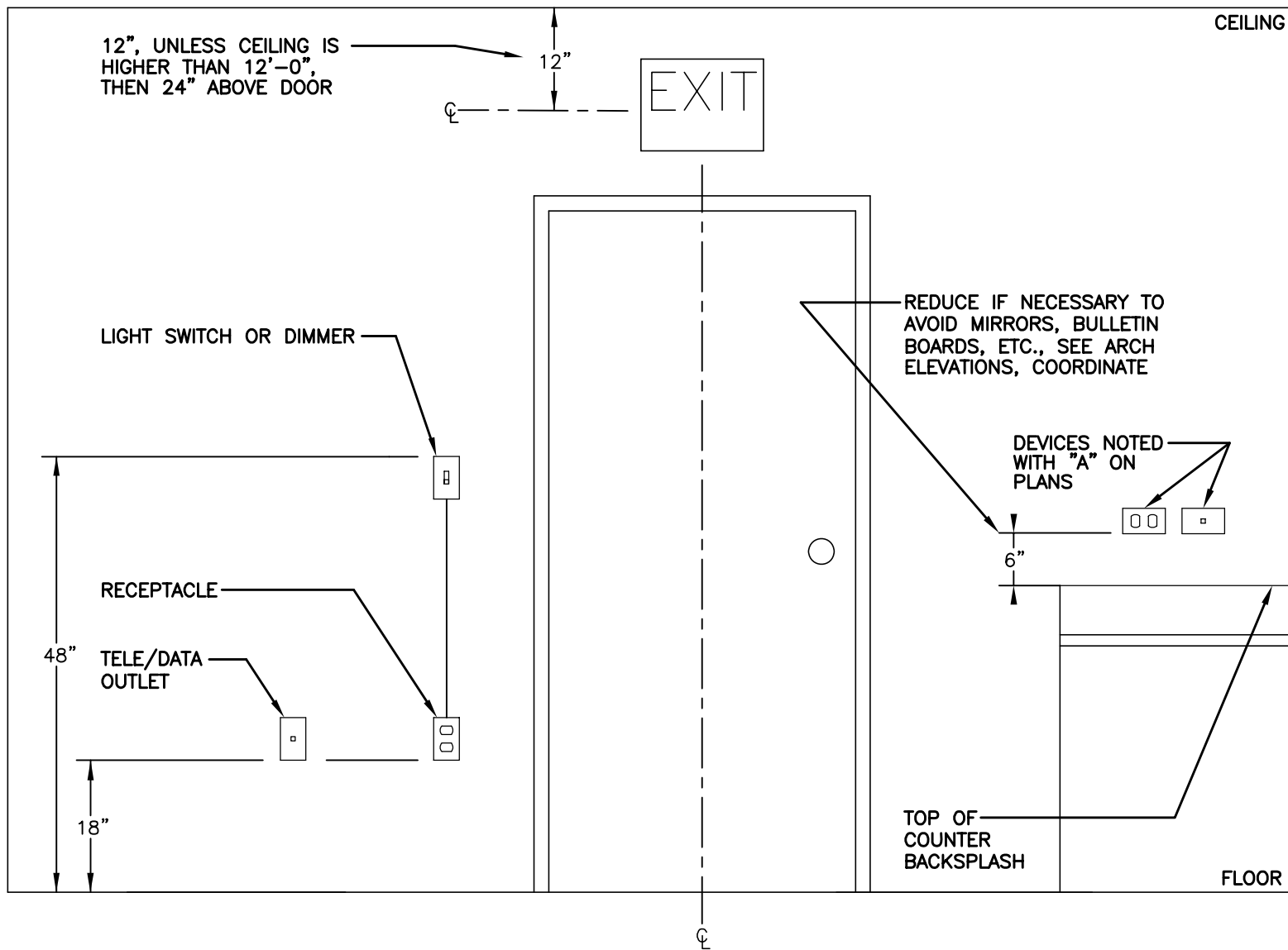
SYMBOL	DESCRIPTION
E	ON EMERGENCY GENERATOR POWER
G	GROUND FAULT CIRCUIT INTERRUPTER (GFCI)
A	MOUNT 6" ABOVE COUNTER BACKSPLASH, COORDINATE WITH ARCHITECTURAL DRAWINGS, SEE DETAIL 1/E001
C	CEILING MOUNTED
W	WEATHERPROOF
I	ISOLATED GROUND
X	EXPLOSION PROOF
K	KEY OPERATED
S	SAFETY TYPE RECEPTACLE (TAMPERPROOF)
U	UNDERCOUNTER

ABBREVIATIONS	
ABBREV.	DESCRIPTION
A	AMPERES OR TRIP AMPERES
AC	ABOVE COUNTERTOP
ADA	AMERICANS WITH DISABILITIES ACT
AFF	ABOVE FINISHED FLOOR
AIC	SYMMETRICAL AMPS INTERRUPTING CAPACITY
AWG	AMERICAN WIRE GAUGE
BLDG	BUILDING
C	CONDUIT
CB	CIRCUIT BREAKER
CKT	CIRCUIT
CONT	CONTACTOR
CONTR	CONTRACTOR
EA	EACH
FT	FEET
OFCI	OWNER FURNISHED CONTRACTOR INSTALLED
GND OR GRD	GROUND
HPS	HIGH PRESSURE SODIUM
KVA	KILOVOLT AMPERES
MAX	MAXIMUM
MIN	MINIMUM
MTD	MOUNTED
NEC	NATIONAL ELECTRICAL CODE
NEMA	NATIONAL ELECTRICAL MANUFACTURERS ASSOCIATION
P	POLE
PH	PHASE
PVC	POLYVINYL CHLORIDE
RM	ROOM
SCH	SCHEDULE
S.O. OR SPACE	SPACE(S) ONLY (NO BREAKER DEVICE)
SPARE	SPARE BREAKER OR DEVICE
SPECS	CONTRACT SPECIFICATIONS
SQ	SQUARE
TTB	TELEPHONE TERMINAL BOARD
UL	UNDERWRITERS LABORATORIES
UON	UNLESS OTHERWISE NOTED
V	VOLTS
VA	VOLT AMPERES
W	WATTS
XF	TRANSFORMER

- ### LEGEND NOTES
- BRANCH CIRCUIT NUMBERS MAY BE SHOWN NEXT TO SYMBOLS IN MULTIWIRE CIRCUITS.
  - EQUIPMENT IDENTIFIERS, MATCHING EQUIPMENT SCHEDULES, ARE DISPLAYED ATTACHED TO SYMBOLS BY LEADER ARROWS, UON.
  - SYMBOL ORIENTATION DOES NOT IMPLY DEVICE OR EQUIPMENT ORIENTATION, UNLESS NOTED AS SUCH. SEE REFLECTED CEILING PLANS FOR LIGHT FIXTURE POSITIONS AND ORIENTATIONS.
  - SYMBOL SIZE DOES NOT IMPLY EQUIPMENT SIZE, UON. THESE ELECTRICAL DRAWINGS ARE SCHEMATIC IN NATURE AND ARE NOT TO BE SCALED FOR ANY PURPOSE.
  - LOWER CASE LETTER NEAR LIGHT SWITCH INDICATES LIGHTING FIXTURES CONTROLLED BY CORRESPONDING LETTER.
  - SEE SHEETS E806 AND E807 FOR SPECIAL SYSTEMS SYMBOLS.
  - SEE SHEET E902 FOR LIGHTNING PROTECTION SYSTEM SYMBOLS.

### GENERAL NOTES: (APPLICABLE TO ALL ELECT. SHEETS)

- EQUIPMENT INTERRUPTING CAPACITIES SPECIFIED IN THE CONTRACT DOCU-MENTS ARE BASED UPON EQUIPMENT CHARACTERISTICS AND IMPEDANCES SHOWN ON THE DRAWINGS. IF ACTUAL INSTALLED EQUIPMENT DEVIATES FROM THESE CHARACTERISTICS OR HAS LOWER IMPEDANCES. THE CONTRACTOR SHALL INCREASE THE INTERRUPTING CAPACITIES OF ALL ITEMS ON THE LOAD SIDE OF THE DEVIANT EQUIPMENT IN DIRECT PROPORTION TO THE CHANGED CHARACTERISTICS. INTERRUPTING CAPACITIES SHALL NOT BE REDUCED TO VALUES LESS THAN THOSE REQUIRED BY THE CONTRACT DOCUMENTS.
- FIRE STOP SHALL BE PROVIDED AT ALL LOCATIONS WHERE ELECTRICAL EQUIPMENT OR SYSTEMS PENETRATE FIRE RATED WALLS.
- RISER AND ONE-LINE DIAGRAMS ARE MEANT TO SHOW ONLY VERTICAL AND ELECTRICAL RELATIONSHIPS AND THEREFORE MAY NOT INCLUDE ALL REQUIRED EQUIPMENT, DEVICES, AND ACCESSORIES.
- ANY ITEMS (I.E. CONDUIT, BOXES, PIPES, ETC) MOUNTED BELOW ROOF STRUCTURE MUST BE EMBEDDED IN WALL.
- INSTALL MINIMUM 200 POUND PULL CORD IN EACH EMPTY CONDUIT.
- NO CONDUIT OR WIRING SHALL PASS THROUGH ELEVATOR SHAFT. ONLY WIRING REQUIRED TO CONNECT ITEMS IN SHAFT WILL BE ALLOWED.
- ELECTRICAL DEVICES MOUNTED ON WAINSCOT PANEL SHALL BE CENTERED IN WAINSCOT PANELS. COORDINATE EXACT LOCATION WITH MILLWORK CONTRACTOR PRIOR TO ROUGH-IN.
- CONTRACTOR SHALL PROVIDE ALL REQUIRED TELEPHONE JACKS AND CABLE TO TELEPHONE TERMINAL BOARD.
- ALL TELE/DATA CABLING, DEVICE JACKS AND CONVERPLATES SHALL BE PROVIDED BY CONTRACTOR.
- ELECTRICAL DEVICES MOUNTED IN EXTERIOR WALLS SHALL BE MOUNTED SUCH THAT THE DEVICE COVER PLATE SHALL BE FLUSH WITH THE FINISHED WALL SURFACE.
- ALL WORK SHALL BE IN FULL ACCORDANCE WITH THE NEC, ADA AND APPLICABLE NFPA CODES.
- POWER, TELEPHONE AND DATA OUTLET ROUGH-IN LOCATIONS ARE INDICATED ON DRAWINGS FOR REFERENCE ONLY AND ARE NOT TO BE SCALED. ALL OUTLET LOCATIONS/HEIGHTS SHALL BE COORDINATED PRIOR TO CONSTRUCTION WITH FINAL APPROVED EQUIPMENT AND FURNITURE SCALED SHOP DRAWINGS. COORDINATE ALL SPECIAL SYSTEMS REQUIREMENTS WITH OWNER PRIOR TO CONSTRUCTION AND SUBMIT SCALED SHOP DRAWINGS FOR APPROVAL.
- ALL PUBLIC ADDRESS SYSTEM SPEAKERS SHALL BE PROVIDED AS PART OF THE TELEPHONE SYSTEM, COORDINATE AS REQUIRED.
- LIGHT SWITCHES SHALL NOT BE INSTALLED IN WOOD WALL PANELS OR IN PUBLIC CORRIDORS, COORDINATE WITH ARCHITECTURAL DRAWINGS.
- BACK-TO-BACK THRU WALL TYPE DEVICE BOXES ARE NOT ALLOWED.



### 1 E001 DEVICE AND EXIT SIGN MOUNTING HEIGHTS NOT TO SCALE

LIGHTING FIXTURE SCHEDULE					
MARK	MANUFACTURER & MODEL NO.(OR EQUAL)	LAMPS		MOUNTING	REMARKS
		NO.	TYPE		
A	COLUMBIA JT824232G-FSA12-EB8LHUNV-F0735	2	F32 T8	RECESSED	
A1	COLUMBIA STR24-232G-MPO-S-EB8LHUNV-F0735	2	F32 T8	RECESSED	
B	COLUMBIA JT824332G-FSA12-3EB8LHUNV-F0735	3	F32 T8	RECESSED	
B1	COLUMBIA JT824332G-FSA12-3EBDMMKX277-F0735	3	F32 T8	RECESSED	NOTE 9
B2	COLUMBIA JT824332G-FSA12-3EB8LHUNV-F0735	3	F32 T8	RECESSED	NOTE 10
B3	COLUMBIA STR24-332G-MPOS-EB8LHUNV	3	F32 T8	RECESSED	
D	COLUMBIA CS4-232-EB8LHUNV-F0735	2	F32 T8	SURFACE/CHAIN	
E	COLUMBIA SA4-232-EB8LHUNV-F0735	2	F32 T8	SURFACE	
F	COLUMBIA CRC24-332G-A19--3EB8UNV-F0735	3	F32 T8	RECESSED	
G	PRESCOLITE CF1832EB-STF802-TRG-B24-F32TBX-835-4P	1	32W TTT	RECESSED	
H	COLUMBIA CS4-232-EB8LHUNV-F0735	2	F32 T8	SURFACE	
H1	COLUMBIA SS2-217B-EB8LHUNV	2	17W T8	SURFACE	
J	ALERA CVL-318-CM48-LD-EB8LHUNV-MW-12-SCE	9	F32 T8	SUSPENDED	NOTE 7
K	PRESCOLITE IBX26ICAT-TL64-G6-277	1	26W TTT	RECESSED	NOTE 2
L	PRESCOLITE #CF8C32IEB-CR-BA-277	1	32W TTT	WALL MOUNT	NOTE 1
M	COLUMBIA UC48-132-EB8-120R5W	1	F32 T8	UNDER CABINET	
N	COLUMBIA M464-432F-FSOP-4EB8-277-F0735	4	F32 T8	RECESSED	
	HUBBELL CSXWREB3	-	L.E.D.	SURFACE	
AA1	HUBBELL CR1-A-H40-H3-F-5-GR-L/SSP30-4-7-GRYDM10-BC	1	400W MH	POLE MOUNTED	NOTE 1
AA2	HUBBELL CR1-A-H40-H3-F-5-GR-L/SSP30-4-7-GRYDM2180-BC	2	400W MH	POLE MOUNTED	NOTE 1
BB	HUBBELL PGM-175H128-3-277	1	175W MH	WALL MOUNT	NOTE 1
CC	HUBBELL FN2-P10-DO-Q-GR	1	100W MH	BOLLARD	NOTE 1
DD	HUBBELL PGM-070H-128-3-277	1	70W MH	WALL MOUNT	NOTE 1
EE	HUBBELL MHSY-400H-468-1	1	400W MH	SURFACE	NOTE 8
FF	PRESCOLITE RHD801-100MHFF-WTH802-B6-277	1	100W MH	RECESSED	
GG	PRESCOLITE CF8W32IEB-CR-277-BA	1	32W TTT	WALL	NOTE 1
HH	KIM AFL22-400MH480-LG-P/SM2-LGP	1	400W MH	FOOTING	NOTES 1 & 5
JJ	INSIGHT WF5/00/1A(1)/T5H0/54W/4/2/TN	1	54W T5H0	SURFACE	NOTE 6.

- ### LIGHTING FIXTURE NOTES:
- FIXTURE FINISH SHALL BE GRAY UON. COORDINATE MOUNTING LOCATION WITH ARCHITECTURAL DRAWINGS.
  - SHALL BE WET LOCATION RATED.
  - ALL FLUORESCENT LAMPS SHALL BE 3500 DEGREES KELVIN COLOR TEMPERATURE AND HAVE A MINIMUM CRI OF 80.
  - CONTRACTOR SHALL PROVIDE GYPBOARD FLANGE KITS FOR FIXTURES SHOWN IN GYPBOARD LOCATIONS.
  - MOUNT ON PIPE TENON SET IN CONCRETE FOOTING SIMILAR TO DETAIL 2/E201.
  - MOUNT ON BEAM OF CANOPY.
  - SUSPEND FIXTURE UNIFORM DISTANCE FROM CEILING
  - MOUNT ON BEAM SEE ARCHITECTURAL DETAIL
  - FIXTURE TO HAVE DIMMING BALLAST
  - FIXTURE TO HAVE 2 BALLASTS FOR SWITCHING INNER AND OUTER LAMPS

DEPARTMENT INDEX	
01	CHILD BEHAVIOR
02	OUTDOOR EQUIPMENT
03	LABORATORY
04	W.I.C.
05	ADMINISTRATION
06	BUSINESS OFFICE
07	HEALTH INFORMATION MANAGEMENT
08	INFORMATION MANAGEMENT
09	AUDIOLOGY
10	DENTAL CARE
11	EYE CARE
12	PRIMARY CARE
13	DIAGNOSTIC IMAGING
14	PHARMACY
15	PHYSICAL THERAPY
16	MENTAL HEALTH
17	SOCIAL WORK
18	CLINICAL ENGINEERING
19	FACILITY MANAGEMENT
20	ENVIRONMENTAL HEALTH
21	HEALTH EDUCATION
22	PUBLIC HEALTH NURSING
23	PUBLIC HEALTH NUTRITION
24	EDUCATION AND GROUP COUNSELING
25	LIBRARY
26	EMPLOYEE FACILITIES
27	HOUSEKEEPING & LINEN
28	HOUSEKEEPING
29	PROPERTY & SUPPLY
30	PUBLIC FACILITIES
31	MECHANICAL

**AS-BUILT DRAWINGS**  
These Documents reflect the "Relative As-Built" conditions of the Project as completed by the General Contractor.  
The Design Team neither warrants nor implies the accuracy of these documents in relation to work-in-place.

CONSULTANTS:

CONTRACTOR:

**SGS, L.L.C.**  
25 S. OKLAHOMA AVE., SUITE 910  
Oklahoma City, OK 73104  
405.416.8400 / Fax 405.416.8410

**The Clinton Indian Health Center**  
Cheyenne and Arapaho Tribes  
of Oklahoma Indian Reserve  
Clinton, Oklahoma  
IHS PROJECT NO. OK03CL137C7

REVIEWED:

ES PROJECT MANAGER: DATE:

APPROVED:

ES PROJECT MANAGER: DATE:

ES BRANCH CHIEF: DATE:

CONCURRENCE:

AGENCY REPRESENTATIVE: DATE:

TITLE

REV. DATE DESCRIPTION

ISSUE: 08-01-2007  
PROJECT NO: CA000104  
CAD DWG FILE: CIG-E001.DWG  
DRAWN BY: SAC  
CHECKED BY: DEH

SHEET TITLE:

**ELECTRICAL LEGEND AND SCHEDULES**

E001  
SHEET NO: 189 of 219



CONSULTANTS:



5555 North Grand Boulevard  
Oklahoma City, OK 73125-5507  
405.416.8239 / Fax 405.416.8414

CONTRACTOR:

**SGS, L.L.C.**

25 S. OKLAHOMA AVE., SUITE 310  
Oklahoma City, OK 73104  
405.416.8400 / Fax 405.416.8410

**The Clinton Indian Health Center**

Cheyenne and Arapaho Tribes  
of Oklahoma Indian Reserve  
Clinton, Oklahoma

IHS PROJECT NO. OK03CL137C7

US DEPARTMENT  
OF HEALTH AND  
HUMAN SERVICES  
**INDIAN HEALTH SERVICE**  
ENGINEERING SERVICES  
SEATTLE / DALLAS

REVIEWED:

ES PROJECT MANAGER DATE:

APPROVED:

ES PROJECT MANAGER DATE:

ES BRANCH CHIEF DATE:

CONCURRENCE:

AGENCY REPRESENTATIVE DATE:

TITLE

REV.	DATE	DESCRIPTION

ISSUE: 08-01-2007

PROJECT NO: CA000104

CAD DWG FILE: CIG-E201.DWG

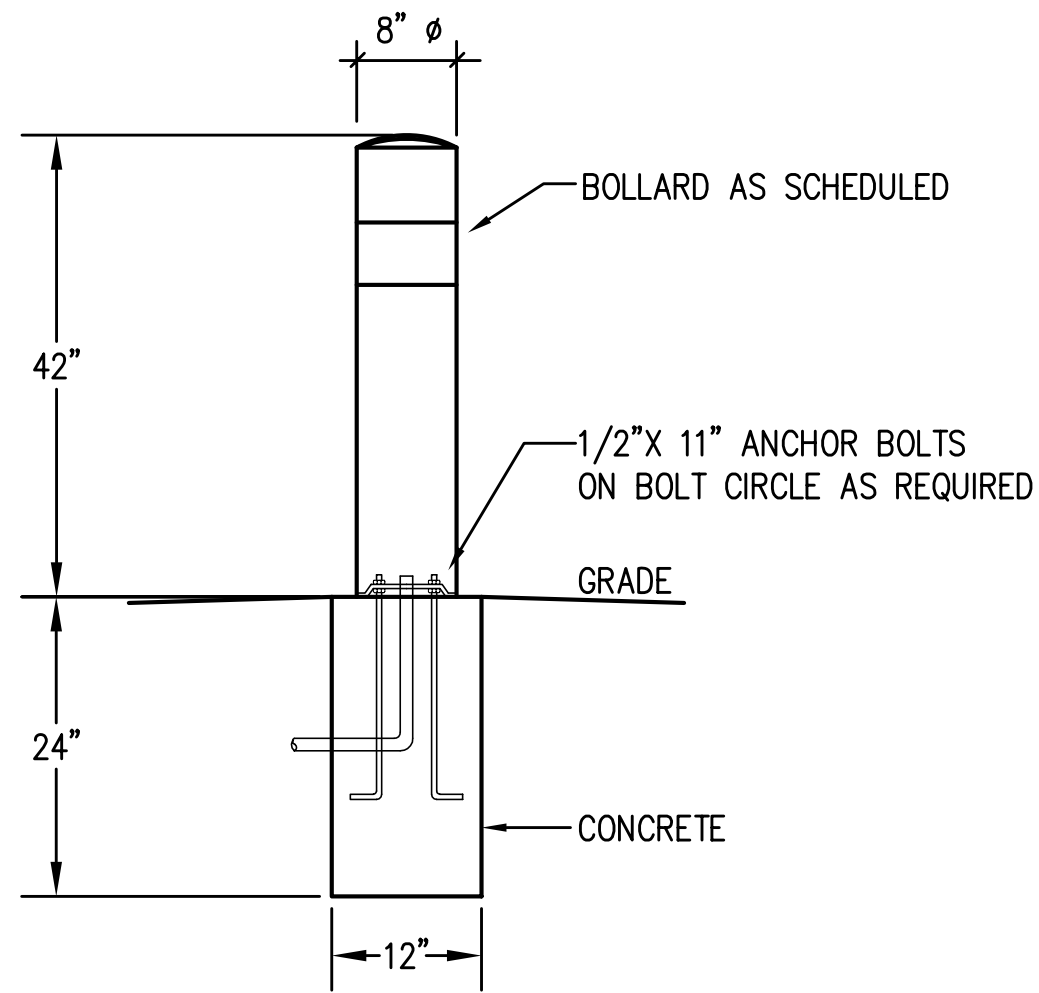
DRAWN BY: SAC

CHECKED BY: DEH

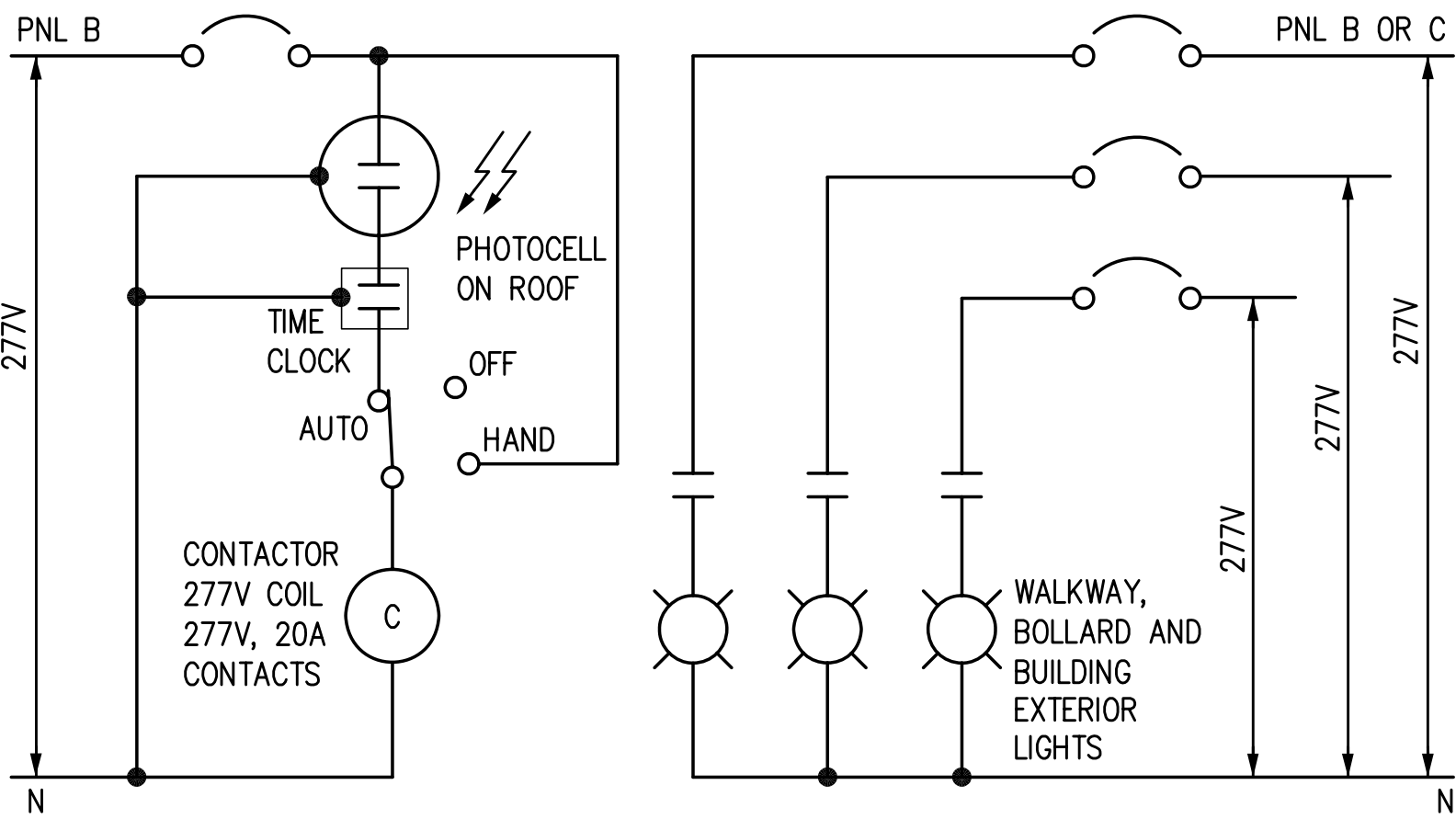
SHEET TITLE:

**ELECTRICAL SITE  
PLAN AND  
DETAILS**

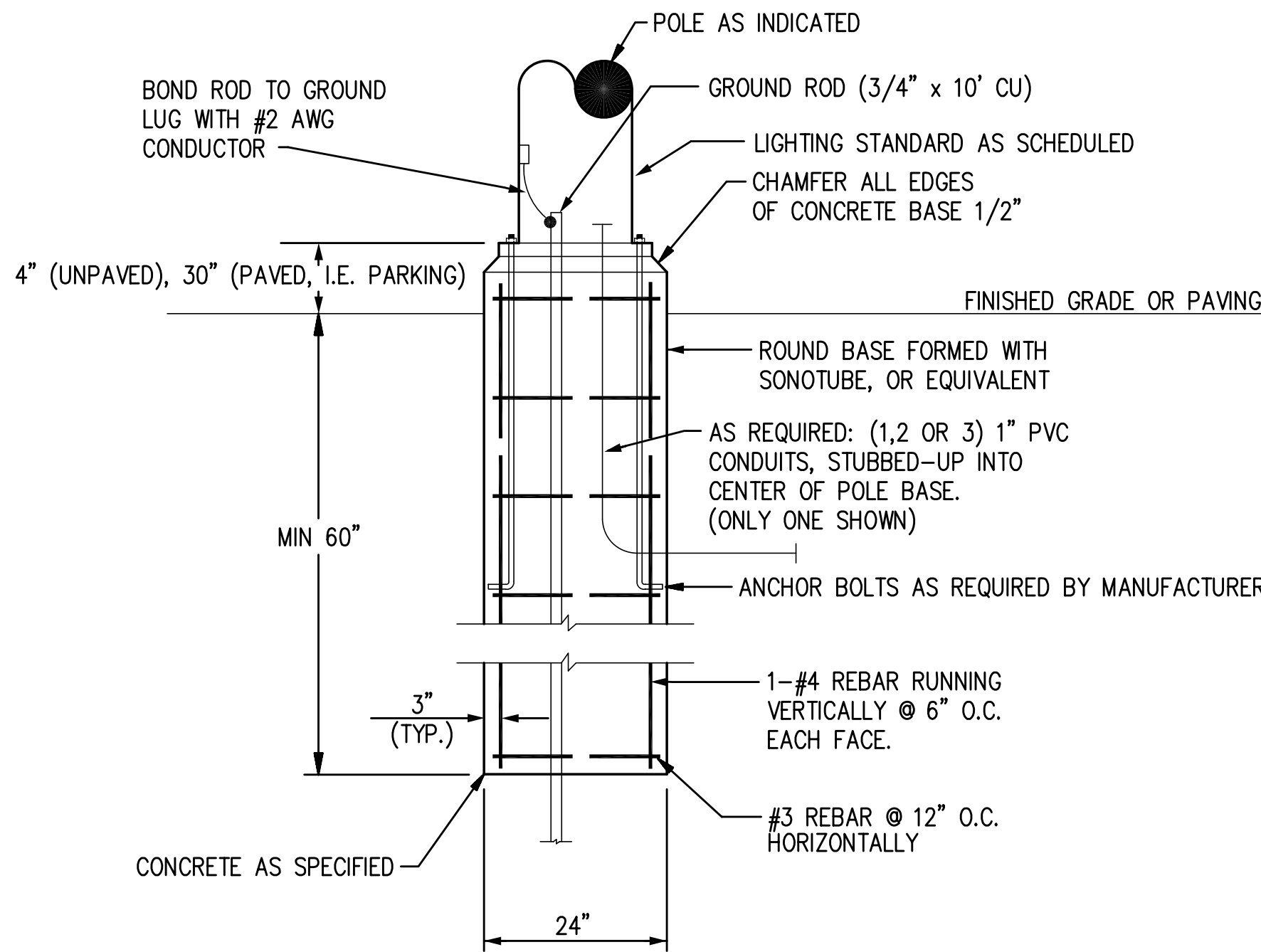
E201  
SHEET NO: 190 of 219



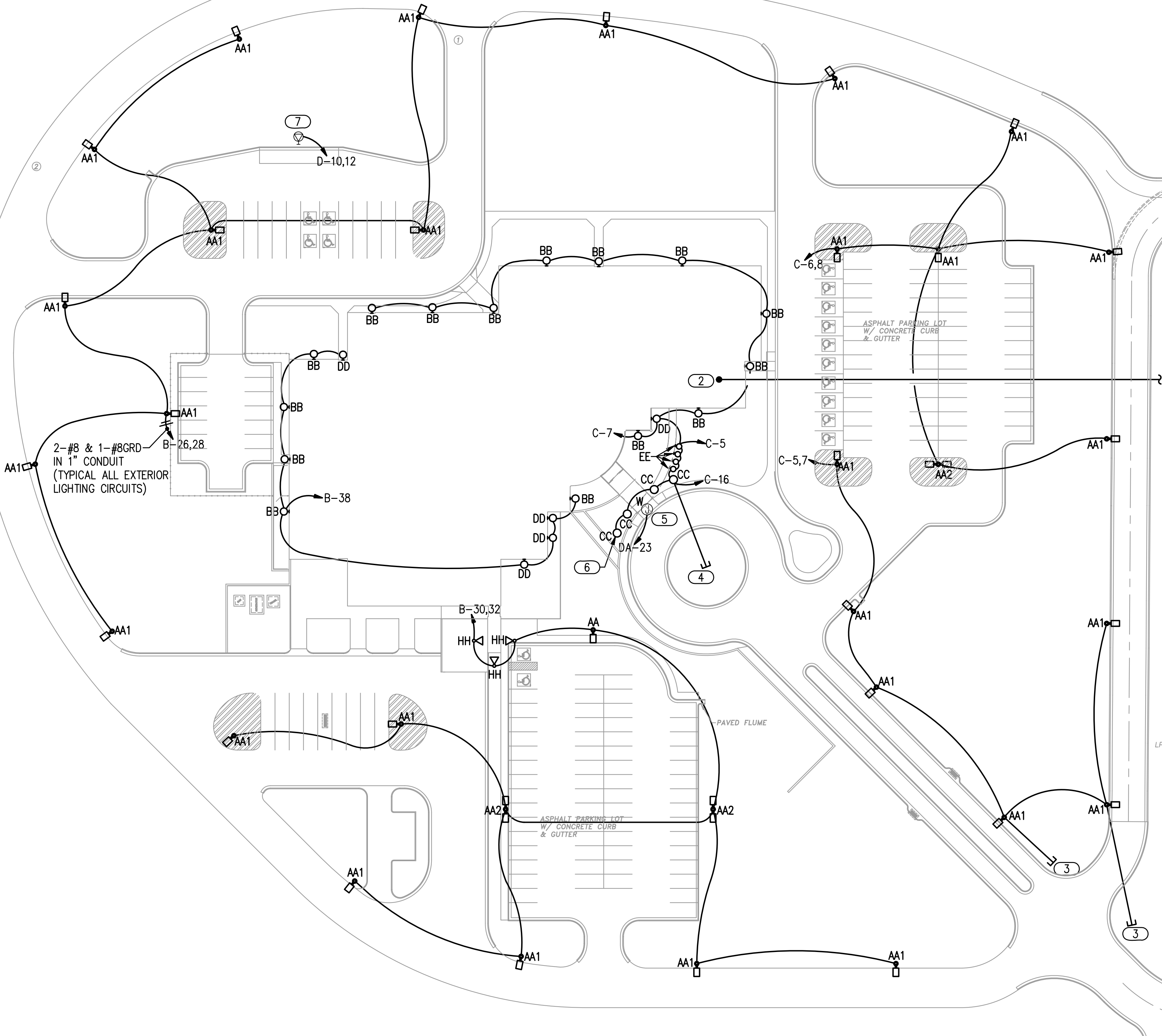
2 BOLLARD DETAIL (MARK "CC")  
NOT TO SCALE



3 EXTERIOR LIGHTING SCHEMATIC  
NOT TO SCALE



4 TYPICAL LIGHT POLE BASE DETAIL  
NOT TO SCALE



1 ELECTRICAL SITE PLAN  
Scale: 1" = 40'-0"

NOTES:

- SEE SHEET E305 FOR ADDITIONAL LOCATION INFORMATION.
- TELEPHONE AND CATV DEMARCATION POINT IN ROOM 31-02, SEE SHEET E801. PROVIDE TWO 2" CONDUITS EACH WITH A PULL CORD AND 3 CELL MAXCELL TEXTILE LINER FOR FUTURE.
- STUB OUT AND CAP 1" PVC SCH. 40 FOR FUTURE ILLUMINATION OF SIGNAGE.
- STUB OUT AND CAP 1" PVC SCH. 40 FOR FUTURE WATER FEATURE.
- 120V CIRCUIT TO J-BOX FOR BACK LIGHTED SIGN. COORDINATE EXACT LOCATION WITH ARCHITECTURAL PLANS.
- COORDINATE EXACT LOCATION OF FOUR BOLLARD LIGHTS WITH ARCHITECTURAL DRAWINGS, SEE SHEET AS101A.
- PROVIDE RV POWER PEDESTAL INCLUDING 20A., 30A., AND 50A. 120V. RECEPTACLES IN A NEMA 3R ENCLOSURE. MOUNT RECEPTACLES AT 36" AFF. PROVIDE 3-#4, & #6 GND. IN 1" SCHEDULE 40 PVC.

SITE LIGHTING PLAN LEGEND	
SYMBOL	DESCRIPTION
	POLE MOUNTED SITE LIGHT FIXTURE
	BOLLARD SITE LIGHT FIXTURE
	WALL MOUNTED FIXTURE
	HID GROUND MOUNTED FIXTURE

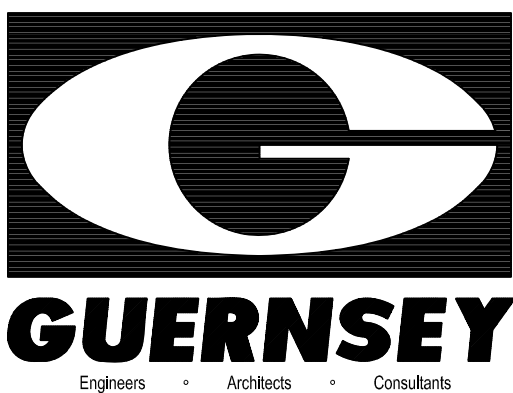
40' 0' 40' 80'  
SCALE OF FEET

**AS-BUILT DRAWINGS**

These Documents reflect the "Relative As-Built" conditions of the Project as completed by the General Contractor.  
The Design Team neither warrants nor implies the accuracy of these documents in relation to work-in-place.



CONSULTANTS:



5555 North Grand Boulevard  
Oklahoma City, OK 73112-5507  
405.416.8239 / Fax 405.416.8114

CONTRACTOR:

**SGS, L.L.C.**

25 S. OKLAHOMA AVE., SUITE 310  
Oklahoma City, OK 73104  
405.416.8400 / Fax 405.416.8410

**The Clinton Indian Health Center**

Cheyenne and Arapaho Tribes  
of Oklahoma Indian Reserve  
Clinton, Oklahoma

IHS PROJECT NO. OK03CL137C7



REVIEWED:

ES PROJECT MANAGER DATE:

APPROVED:

ES PROJECT MANAGER DATE:

ES BRANCH CHIEF DATE:

CONCURRENCE:

AGENCY REPRESENTATIVE DATE:

TITLE

REV.	DATE	DESCRIPTION

ISSUE: 08-01-2007

PROJECT NO: CA000104

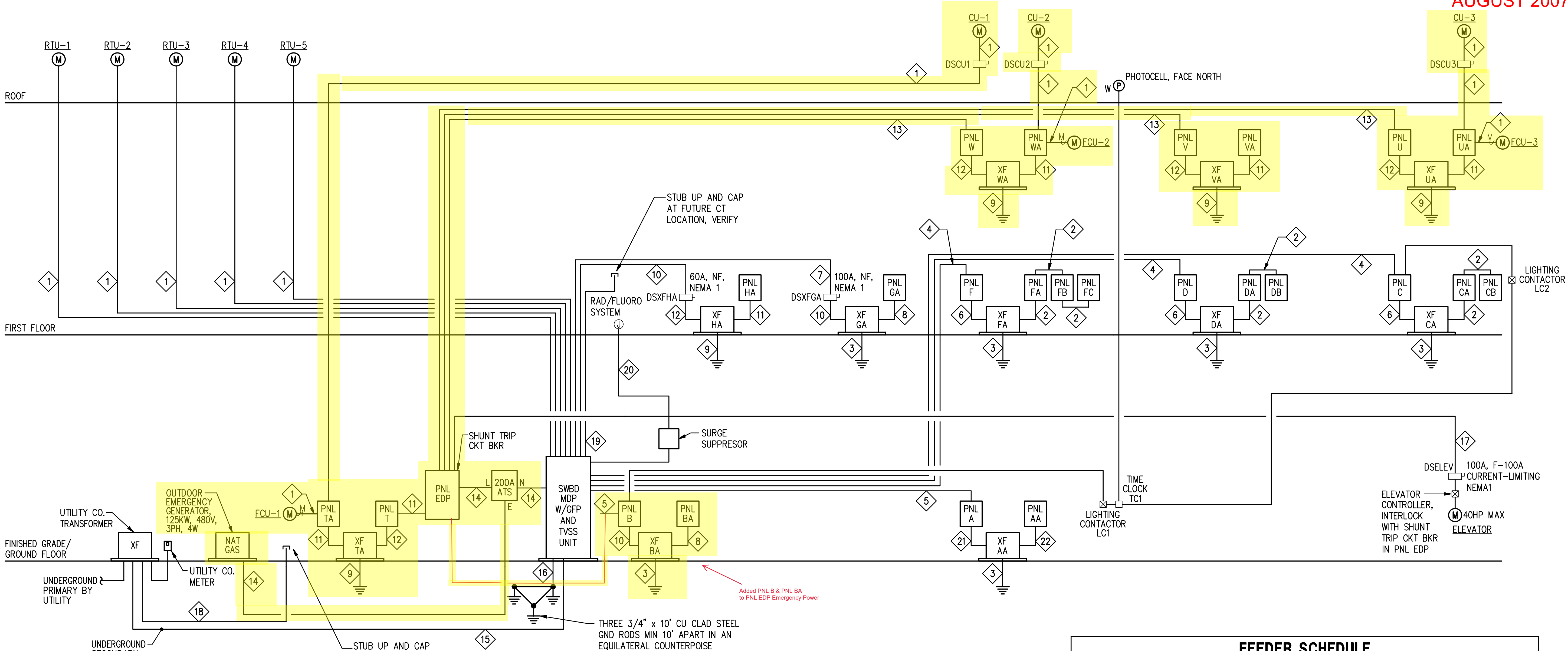
CAD DWG FILE: CIG-E601.DWG

DRAWN BY: SAC

CHECKED BY: DEH

SHEET TITLE:

**ELECTRICAL POWER  
SCHEMATIC AND  
SCHEDULES**



**1 ELECTRICAL POWER SCHEMATIC**  
NOT TO SCALE

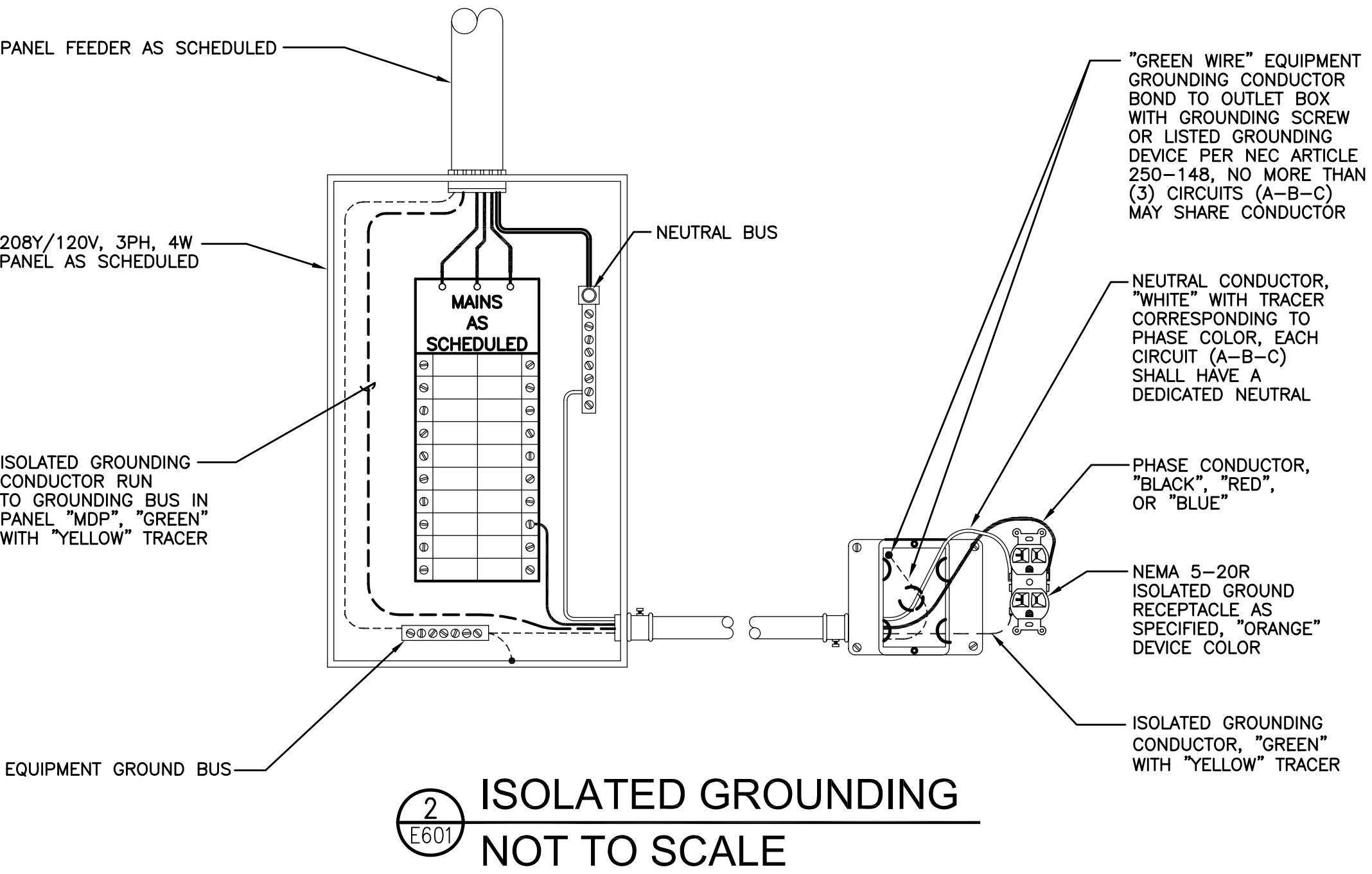
TRANSFORMER SCHEDULE						
NAME	LOCATION	KVA	VOLTAGE		IMPEDANCE	
			PRIMARY	SECONDARY	MAX	MIN
AA	ROOM 31-08	45	480V	120/208V	3.0%	4.0%
BA	ROOM 31-01	30	480V	120/208V	3.0%	4.0%
CA	ROOM 31-02	75	480V	120/208V	3.0%	4.0%
DA	ROOM 31-04	75	480V	120/208V	3.0%	4.0%
FA	ROOM 31-07	75	480V	120/208V	3.0%	4.0%
GA	ROOM 31-10	30	480V	120/208V	3.0%	4.0%
HA	ROOM 31-04	15	480V	120/208V	3.0%	4.0%
TA	ROOM 31-08	15	480V	120/208V	3.0%	4.0%
UA	ROOM 31-02	15	480V	120/208V	3.0%	4.0%
VA	ROOM 31-04	15	480V	120/208V	3.0%	4.0%
WA	ROOM 31-07	15	480V	120/208V	3.0%	4.0%

**AS-BUILT DRAWINGS**  
These Documents reflect the "Relative As-Built" conditions of the Project as completed by the General Contractor.  
The Design Team neither warrants nor implies the accuracy of these documents in relation to work-in-place.

FEEDER SCHEDULE			
CONDUCTORS	CONDUIT	NOTES	
1 VARIES	VARIES	1	
2 4-#4/0, & 1-#2 GND.	2-1/2"		
3 1-#2 GND.	1/2"		
4 4-#250KCM & 1-#4 GND.	3"		
5 4-#4/0, & 1-#4 GND.	2-1/2"		
6 3-#3, & 1-#8 GND.	1-1/4"		
7 3-#1, & 1-#6 GND.	1-1/2"		
8 4-#3, & 1-#8 GND.	1-1/4"		
9 1-#8 GND.	1/2"		
10 3-#6, & 1-#8 GND.	1"		
11 4-#8, & 1-#8 GND.	3/4"		
12 3-#10, & 1-#10 GND.	3/4"		
13 4-#6, & 1#8 GND.	1"		
14 4-#4/0, & 1-#2 GND.	2-1/2"		
15 4 SETS OF 4-#600KCM & 1-#300KCM GND.	4", 4 EACH		
16 1-#300KCM GND.	1"		
17 3-#2, & 1-#4 GND.	1-1/2"		
18 200 LB PULL CORD	4"	2	
19 200 LB PULL CORD	2"	3	
20 4-#1/0, & 1-#1/0 GND.	3"	4	
21 3#4 & GND.	1-1/4"		
22 4#1/0 & GND.	2"		

NOTES:

- SEE MECHANICAL EQUIPMENT CONNECTION SCHEDULE, SHEET E502, FOR FEEDER INFORMATION.
- BASED ON ESTIMATED 50HP POSSIBLE FUTURE ELECTRIC-DRIVEN, 480V, 3PH FIRE PUMP AND 1HP JOCKEY PUMP.
- CONDUIT FOR POSSIBLE FUTURE CT INSTALLATION.
- FEEDER FOR RAD/FLUORO SYSTEM, VERIFY AND COORDINATE WITH ACTUAL EQUIPMENT FURNISHED.



**2 ISOLATED GROUNDING**  
NOT TO SCALE



# Panel CB

NOTED FOR NON-TELEPHONIC

DISBURSEMENT

LIGHTING & APPLIANCE

**X**

CCT	BKR	LOAD DESCRIPTION	LOAD VA	% DEM	A	PHASE VA B	C	% DEM	LOAD VA	LOAD DESCRIPTION	BKR	CCT
1	1/20	RECEPTACLES	1080	100	1620			100	540	RECEPTACLES	1/20	2
3	1/20	RECEPTACLES	720	100		1260		100	540	RECEPTACLES	1/20	4
5	1/20	RECEPTACLES	900	100			1800	100	900	RECEPTACLES	1/20	6
7	1/20	RECEPTACLES	900	100	1482			100	540	EF-2 & EF-3	1/20	8
9	1/20	EF-4, EF-5, EF-6 & EF-25	1353	80		2553		80	1200	ROBOTIC DISP SYSTEM	1/20	10
11	1/20	RECEPTACLES	720	100			1080	100	360	TABLE/CAPSULE TABLE	1/20	12
13	1/20	PLASMA SCREENS	1800	100	3060			100	1260	RECEPTACLES	1/20	14
15	1/20	RECEPTACLES	600	100		1520		100	920	RECEPTACLES	1/20	16
17	1/20	SPARE					0			SPARE	1/20	18
19	1/20	SPARE			0					SPARE	1/20	20
21	1/20	SPARE				0				SPARE	1/20	22
23	1/20	SPARE								SPARE	1/20	24
25	1/20	SPARE			0					SPARE	1/20	26
27	1/20	SPARE				0				SPARE	1/20	28
29	1/20	SPARE					0			SPARE	1/20	30
31	1/20	SPARE			0					SPARE	1/20	32
33	1/20	SPARE				0				SPARE	1/20	34
35	1/20	SPARE					0			SPARE	1/20	36
37	1/20	SPARE			0					SPARE	1/20	38
39	1/20	SPARE				0				SPARE	1/20	40
41	1/20	SPARE					0			SPARE	1/20	42

INITIAL CONNECTED	14.4 Kva	6162.0	5333.0	2880.0
INITIAL DEMAND	13.7 Kva	6045.6	4822.4	2880.0
FUTURE DEMAND	17.2 Kva	7557.0	6028.0	3600.0

**10,000** A.I.C.

MAIN BUS RATING

NEUTRAL BAR

MOUNTING

225 amps

Yes

SURFACE

MAIN

EQ. GND. BAR

ENCL. TYPE

MLO

amps

Yes

1

VOLT RATING

120/208V.

3 PH.

4W

SPECIAL NOTES:

**AS-BUILT DRAWINGS**  
These Documents reflect the "Relative As-Built" conditions of the Project as completed by the General Contractor. The Design Team neither warrants nor implies the accuracy of these documents in relation to work-in-place.



# Panel

# FB

RATED FOR NON-FLUOR-LOADING

DISTRIUTION

LIGHTING & APPLIANCE

X

CCT	BKR	LOAD DESCRIPTION	LOAD VA	% DEM	A	PHASE VA B	C	% DEM	LOAD VA	LOAD DESCRIPTION	BKR	CCT
3	1/20	RECEPTACLES	1080	100	1980			100	900	RECEPTACLES	1/20	2
3	1/20	RECEPTACLES	1580	100		2480		100	900	RECEPTACLES	1/20	4
5	1/20	RECEPTACLES	1080	100			1980	100	900	RECEPTACLES	1/20	6
7	1/20	RECEPTACLES	1080	100	1980			100	900	RECEPTACLES	1/20	8
9	1/20	RECEPTACLES	1080	100			1900	100	900	RECEPTACLES	1/20	10
11	1/20	RECEPTACLES	540	50			1440	50	900	RECEPTACLES	1/20	12
13	1/20	RECEPTACLES	1580	50	2840			50	1260	RECEPTACLES	1/20	14
15	1/20	RECEPTACLES	1080	50		1440		50	360	RECEPTACLES	1/20	16
17	1/20	RECEPTACLES	1080	50			2160	50	1080	RECEPTACLES	1/20	18
19	1/20	RECEPTACLES	900	50	1620			50	720	RECEPTACLES	1/20	20
21	1/20	RECEPTACLES	1220	50		1940		50	720	RECEPTACLES	1/20	22
23	1/20	RECEPTACLES	900	50			1800	50	900	RECEPTACLES	1/20	24
25	1/20	COPIER	1920	80	2640			50	720	RECEPTACLES	1/20	26
27	1/20	RECEPTACLES	720	50		1440		50	720	RECEPTACLES	1/20	28
29	1/20	EF-10, EF-12, EF-13 & EF-15	858	80			1621	80	763	EF-14, EF-16, EF-17 & EF-18	1/20	30
31	1/20	RECEPTACLES	1080	50	2640			80	1560	COPIER RECEPTACLE	1/20	32
33	2/30	STEAM STERILIZER	2500	80		3820		80	1320	EYE EXAM CHAIR	1/20	34
35	-	-	2500	80			3820	80	1320	EYE EXAM CHAIR	1/20	36
37	2/30	STEAM STERILIZER	2500	80	3820			80	1320	EYE EXAM CHAIR	1/20	38
39	-	-	2500	80		4300		1800	40	COPIER RECEPTACLE	1/20	40
41	1/20	PANORAMIC XRAY	1840	80			2840	100	1000	AUDIOLOGY BOOTH	1/20	42

INITIAL CONNECTED	50.5	Kva	17520.0	17320.0	15661.0
INITIAL DEMAND	37.7	Kva	12930.0	13286.0	11504.8
FUTURE DEMAND	47.2	Kva	16162.5	16607.5	14381.0

10,000 \_\_\_\_\_ A.I.C.

MAIN BUS RATINGS

NEUTRAL BAR

MOUNTING

225 \_\_\_\_\_ amps

Yes \_\_\_\_\_

SURFACE \_\_\_\_\_

MAIN \_\_\_\_\_ MLO \_\_\_\_\_ amps

EQ. GND. BAR \_\_\_\_\_

ENCL. TYPE \_\_\_\_\_

VOLT RATING \_\_\_\_\_

Yes \_\_\_\_\_

120/208V. \_\_\_\_\_

3 PH. 4W \_\_\_\_\_

NEMA 1 \_\_\_\_\_


SPECIAL NOTES: \_\_\_\_\_

FEED-THRU LUGS \_\_\_\_\_

						RATED FOR NON-LINEAR LOADING						
Panel		GA				DISTRIBUTION LIGHTING & APPLIANCE						
CCT	BKR	LOAD DESCRIPTION	LOAD VA	% DEM	A	PHASE VA B	C	% DEM	LOAD VA	LOAD DESCRIPTION	BKR	CCT
1	1/20	EF-1	1176	80	1176			80		SPARE	1/20	2
3	1/20	EF-26	1176	80		1176		80		SPARE	1/20	4
5	1/20	COPIER	1440	80			1440	80		SPARE	1/20	6
7	1/20	SPARE	1632	80	2712			100	1080	RECEPTACLES	1/20	8
9	1/20	RECEPTACLES	720	100		1440		100	720	RECEPTACLES	1/20	10
11	1/20	RECEPTACLES	720	100			1080	100	360	RECEPTACLES	1/20	12
13	1/20	RECEPTACLES	360	100	720			100	360	RECEPTACLES	1/20	14
15	1/20	RECEPTACLES	360	100		1080		100	720	RECEPTACLES	1/20	16
17	1/20	RECEPTACLES	720	100			1440	100	720	RECEPTACLES	1/20	18
19	1/20	RECEPTACLES	1800	100	3600			100	1800	RECEPTACLES	1/20	20
21	1/20	RECEPTACLES	1800	100		1800				SPARE	1/20	22
23	1/20	SPARE					0			SPARE	1/20	24
25	1/20	SPARE			0					SPARE	1/20	26
27	1/20	SPARE				0	0			SPARE	1/20	28
29	1/20	SPARE					0			SPARE	1/20	30
31	1/20	SPARE			0					SPARE	1/20	32
33	1/20	SPARE				0				SPARE	1/20	34
35	1/20	SPARE					0			SPARE	1/20	36
37	1/20	SPARE			0					SPARE	1/20	38
39	1/20	SPARE				0				SPARE	1/20	40
41	1/20	SPARE					0			SPARE	1/20	42
INITIAL CONNECTED			17.7 Kva	8208.0		5496.0	3960.0					
INITIAL DEMAND			16.6 Kva	7646.4		5260.8	3672.0	10,000 A.I.C.				
FUTURE DEMAND			20.7 Kva	9558.0		6576.0	4590.0					
MAIN BUS RATING			100 amps	MAIN E.Q. GND. BAR ENCL. TYPE			VOLT RATING	120/208V.	3 PH / 4W			
NEUTRAL BAR MOUNTING			<u>Yes</u>				<u>Yes</u>					
			<u>SURFACE</u>				<u>NEMA 1</u>					
SPECIAL NOTES:			SERVICE RATED									

**AS-BUILT DRAWINGS**  
These Documents reflect the "Rela

CONSULTANTS:



**GUERNSEY**

Engineers + Architects + Consultants

5555 North Grand Boulevard  
Oklahoma City, OK 73112-5507  
405.416.8239 / Fax 405.416.8114

CONTRACTOR:

**SGS, L.L.C.**


25 S. OKLAHOMA AVE., SUITE 310  
Oklahoma City, OK 73104  
405.416.8400 / Fax 405.416.8410

**The Clinton Indian Health Center**


Cheyenne and Arapaho Tribes  
of Oklahoma Indian Reserve  
Clinton, Oklahoma

IHS PROJECT NO. 0K03CL137C7

---

 U.S. DEPARTMENT  
OF HEALTH  
AND HUMAN SERVICES

**INDIAN HEALTH SERVICE  
ENGINEERING SERVICES  
SEATTLE / DALLAS**



REVIEWED:		
ES PROJECT MANAGER	DATE:	
APPROVED:		
ES PROJECT MANAGER	DATE:	
ES BRANCH CHIEF	DATE:	
CONCURRENCE:		
AGENCY REPRESENTATIVE	DATE:	
TITLE		
REV.	DATE	DESCRIPTION

ISSUE:	08-01-2007
PROJECT NO:	CA000104
CAD DWG FILE:	CIC-E603.DWG
DRAWN BY:	SAC
CHECKED BY:	DEH

SHEET TITLE:

---

**PANEL SCHEDULES**

---

E603

SHEET NO: 205 of 219





ARCHITECT AIA  
1800 N. Interstate Drive  
Suite 114  
Norman, OK 73072  
405-878-0200

CONSULTANTS:



GUERNSEY  
Engineers Architects Consultants

5555 North Grand Boulevard  
Oklahoma City, OK 73112-5507  
405.416.8239 / Fax 405.416.8114

CONTRACTOR:

SGS, L.L.C.

25 S. OKLAHOMA AVE., SUITE 910  
Oklahoma City, OK 73104  
405.416.8400 / Fax 405.416.8410

The Clinton Indian Health Center

Cheyenne and Arapaho Tribes  
of Oklahoma Indian Reserve  
Clinton, Oklahoma

IHS PROJECT NO. OK03CL137C7



US DEPARTMENT  
OF HEALTH AND  
HUMAN SERVICES  
INDIAN HEALTH SERVICE  
ENGINEERING SERVICES  
SEATTLE / DALLAS



REVIEWED:

ES PROJECT MANAGER DATE:

APPROVED:

ES PROJECT MANAGER DATE:

ES BRANCH CHIEF DATE:

CONCURRENCE:

AGENCY REPRESENTATIVE DATE:

TITLE		

REV.	DATE	DESCRIPTION
------	------	-------------

ISSUE: 08-01-2007

PROJECT NO: CA000104

CAD DWG FILE: CIG-E604.DWG

DRAWN BY: SAC

CHECKED BY: DEH

SHEET TITLE:

PANEL SCHEDULES

E604  
SHEET NO: 206 of 219

AS-BUILT DRAWINGS

These Documents reflect the  
"Relative As-Built" conditions of the  
Project as completed by the  
General Contractor.  
The Design Team neither warrants  
nor implies the accuracy of these  
documents in relation to  
work-in-place.

Panel HA														RATED FOR NON-LINEAR LOADING		DISTRIBUTION		LIGHTING & APPLIANCE		X		
CCT	BKR	LOAD DESCRIPTION	LOAD VA	% DEM	A	PHASE VA B	C	% DEM	LOAD VA	LOAD DESCRIPTION	BKR	CCT										
1	1/20	PROJ SCREENS & DIVIDER	1000	80	1720			100	720	RECEPTACLES	1/20	2										
3	1/20	RECEPTACLES	900	100		1260		100	360	RECEPTACLES	1/20	4										
5	1/20	DISHWASHER	1200	80			1450	80	250	COOKTOP EXHAUST HOOD	1/20	6										
7	1/20	MICROWAVE RECEP	1500	80	1860			100	360	RECEPTACLES	1/20	8										
9	2/30	COOKTOP RANGE	2080	80		3880		80	1800	REFRIGERATOR	1/20	10										
11	-	-	2080	80				80	1400	DEMO STAND RECEP	1/20	12										
13	1/20	SPARE			0					SPARE	1/20	14										
15	1/20	SPARE				0				SPARE	1/20	16										
17	1/20	SPARE					0			SPARE	1/20	18										
19	1/20	SPARE			0					SPARE	1/20	20										
21	1/20	SPARE				0				SPARE	1/20	22										
23	1/20	SPARE					0			SPARE	1/20	24										
25	1/20	SPARE			0					SPARE	1/20	26										
27	1/20	SPARE				0				SPARE	1/20	28										
29	1/20	SPARE					0			SPARE	1/20	30										
INITIAL CONNECTED			13.7	Kva	3580.0	5140.0	4930.0															
INITIAL DEMAND			11.4	Kva	3080.0	4364.0	3944.0	10,000 A.I.C.														
FUTURE DEMAND			14.2	Kva	3850.0	5455.0	4930.0															
MAIN BUS RATING			100	amps	MAIN	3/100 MCB	amps	VOLT RATING	120/208V.	3 PH	4W											
NEUTRAL BAR MOUNTING			Yes			EO, GND BAR		Yes														
			<u>SURFACE</u>						<u>NEMA 1</u>													
SPECIAL NOTES:			SERVICE RATED																			

Emergency Panel U														RATED FOR NON-LINEAR LOADING				DISTRIBUTION				LIGHTING & APPLIANCE				X	
CCT	BKR	LOAD DESCRIPTION	LOAD VA	% DEM	A	PHASE VA B	C	% DEM	LOAD VA	LOAD DESCRIPTION	BKR	CCT															
1	1/20	EMERGENCY LIGHTING	1902	100	1902					SPARE	1/20	2															
3	1/20	SPARE				0				SPARE	1/20	4															
5	1/20	SPARE					0			SPARE	1/20	6															
7	1/20	SPARE			0					SPARE	1/20	8															
9	1/20	SPARE				0				SPARE	1/20	10															
11	1/20	SPARE					0			SPARE	1/20	12															
13	1/20	SPARE			0					SPARE	1/20	14															
15	1/20	SPARE				0				SPARE	1/20	16															
17	1/20	SPARE					0			SPARE	1/20	18															
19	1/20	SPARE			0					SPARE	1/20	20															
21	1/20	SPARE				0				SPARE	1/20	22															
23	1/20	SPARE					0			SPARE	1/20	24															
25	1/20	SPARE			5000			100	5000	XF UA	3/25	26															
27	1/20	SPARE				5000		100	5000	-	-	28															
29	1/20	SPARE					5000	100	5000	-	-	30															
																				</							

Emergency Panel VA														RATED FOR NON-LINEAR LOADING		DISTRIBUTION		LIGHTING & APPLIANCE		X	
CCT	BKR	LOAD DESCRIPTION	LOAD VA	% DEM	A	PHASE VA B	C	% DEM	LOAD VA	LOAD DESCRIPTION	BKR	CCT									
1	1/20	FIRE ALARM NAC PANEL	1200	100	2200			80	1000	AUTOMATIC DOORS	1/20	2									
3	1/20	SPARE				1000		80	1000	AUTOMATIC DOORS	1/20	4									
5	1/20	SPARE					0			SPARE	1/20	6									
7	1/20	SPARE			0					SPARE	1/20	8									
9	1/20	SPARE				0				SPARE	1/20	10									
11	1/20	SPARE					0			SPARE	1/20	12									
13	1/20	SPARE			0					SPARE	1/20	14									
15	1/20	SPARE				0				SPARE	1/20	16									
17	1/20	SPARE					0			SPARE	1/20	18									
19	1/20	SPARE			0					SPARE	1/20	20									
21	1/20	SPARE				0				SPARE	1/20	22									
23	1/20	SPARE					0			SPARE	1/20	24									
25	1/20	SPARE			0					SPARE	1/20	26									
27	1/20	SPARE				0				SPARE	1/20	28									
29	1/20	SPARE					0			SPARE	1/20	30									

Emergency Panel T														RATED FOR NON-LINEAR LOADING		DISTRIBUTION		LIGHTING & APPLIANCE		X	
CCT	BKR	LOAD DESCRIPTION	LOAD VA	% DEM	A	PHASE VA	B	C	% DEM	LOAD VA	LOAD DESCRIPTION	BKR	CCT								
1	1/20	EMERGENCY LIGHTING	1456	100	1456						SPARE	1/20	2								
3	1/20	SPARE				0					SPARE	1/20	4								
5	1/20	SPARE					0				SPARE	1/20	6								
7	1/20	SPARE			0						SPARE	1/20	8								
9	1/20	SPARE				0					SPARE	1/20	10								
11	1/20	SPARE					0				SPARE	1/20	12								
13	1/20	SPARE			0						SPARE	1/20	14								
15	1/20	SPARE				0					SPARE	1/20	16								
17	1/20	SPARE					0				SPARE	1/20	18								
19	1/20	SPARE			0						SPARE	1/20	20								
21	1/20	SPARE				0					SPARE	1/20	22								
23	1/20	SPARE					0				SPARE	1/20	24								
25	1/20	SPARE			5000			0	100	5000	XE TA	3/25	26								
27	1/20	SPARE				5000			100	5000	-	-	28								
29	1/20	SPARE					5000		100	5000	-	-	30								