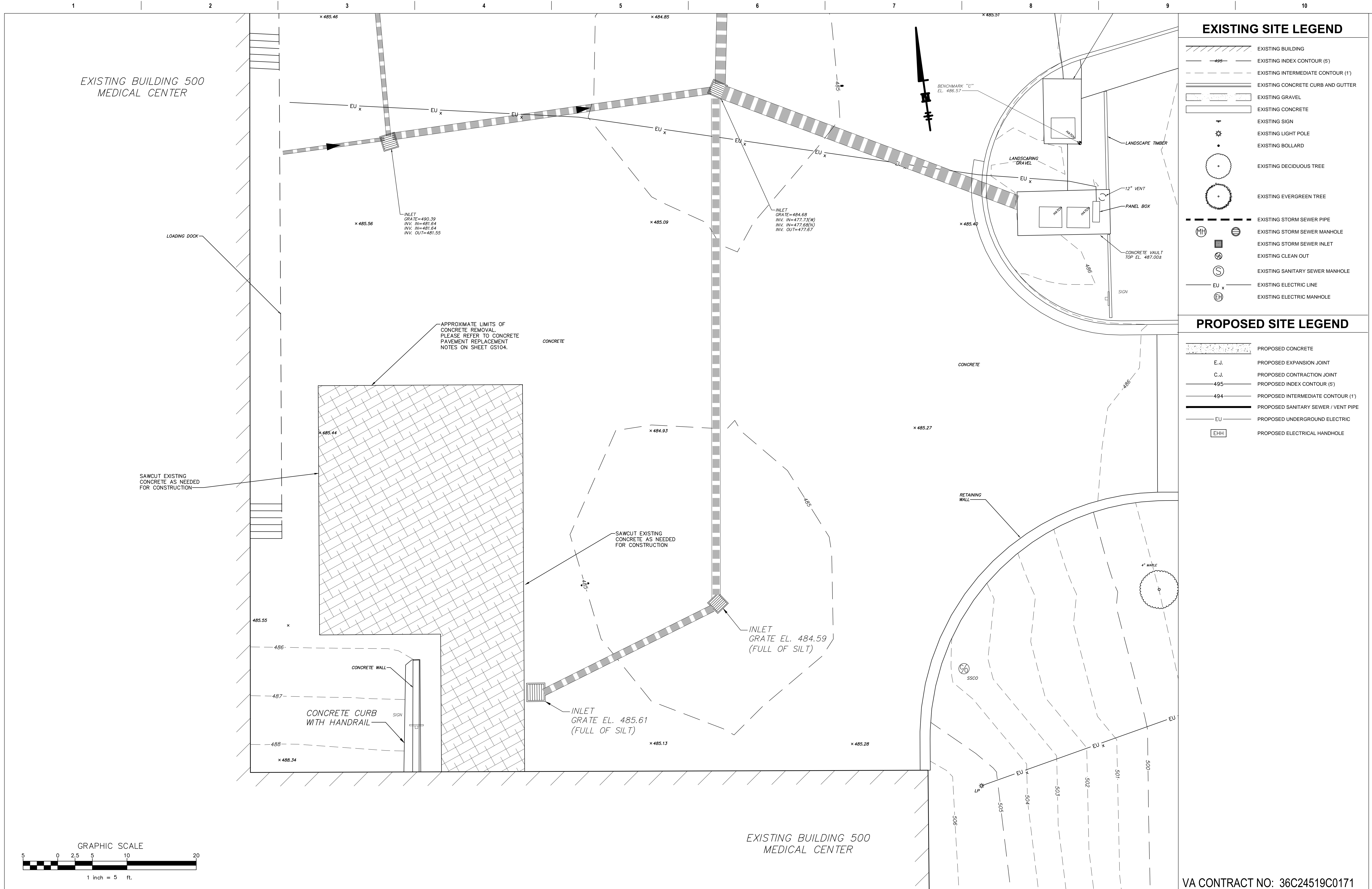


G:\20080\Kitchen Project\20080_05101.dwg 2-10-21 03:53:06 PM kbeldin



EXISTING SITE LEGEND

- EXISTING BUILDING
- EXISTING INDEX CONTOUR (5')
- EXISTING INTERMEDIATE CONTOUR (1')
- EXISTING CONCRETE CURB AND GUTTER
- EXISTING GRAVEL
- EXISTING CONCRETE
- EXISTING SIGN
- EXISTING LIGHT POLE
- EXISTING BOLLARD
- EXISTING DECIDUOUS TREE
- EXISTING EVERGREEN TREE
- EXISTING STORM SEWER PIPE
- EXISTING STORM SEWER MANHOLE
- EXISTING STORM SEWER INLET
- EXISTING CLEAN OUT
- EXISTING SANITARY SEWER MANHOLE
- EXISTING ELECTRIC LINE
- EXISTING ELECTRIC MANHOLE

PROPOSED SITE LEGEND

- PROPOSED CONCRETE
- PROPOSED EXPANSION JOINT
- PROPOSED CONTRACTION JOINT
- PROPOSED INDEX CONTOUR (5')
- PROPOSED INTERMEDIATE CONTOUR (1')
- PROPOSED SANITARY SEWER / VENT PIPE
- PROPOSED UNDERGROUND ELECTRIC
- PROPOSED ELECTRICAL HANDHOLE

VA CONTRACT NO: 36C24519C0171

95% CONSTRUCTION DOCUMENTS SUBMISSION	02.12.2021
60% DESIGN DEVELOPMENT SUBMISSION	09.11.2020
30% SCHEMATIC DESIGN SUBMISSION	05.24.2020
Revisions:	Date:

CONSULTANT
GD&F
GWIN DOBSON & FOREMAN ENGINEERS
3121 Fairway Drive Altoona, PA 16602 814.943.5214 gdfengineers.com

ARCHITECT/ENGINEER OF RECORD
Bancroft
700 Nicholas Bldg. Suite 300 Elk Grove Village, IL 60007 T: 847.992.9362 F: 847.992.9403 www.bancroft-ae.com Bancroft-AE Project No. 18-133

STAMP

Office of Construction and Facilities Management
VA U.S. Department of Veterans Affairs

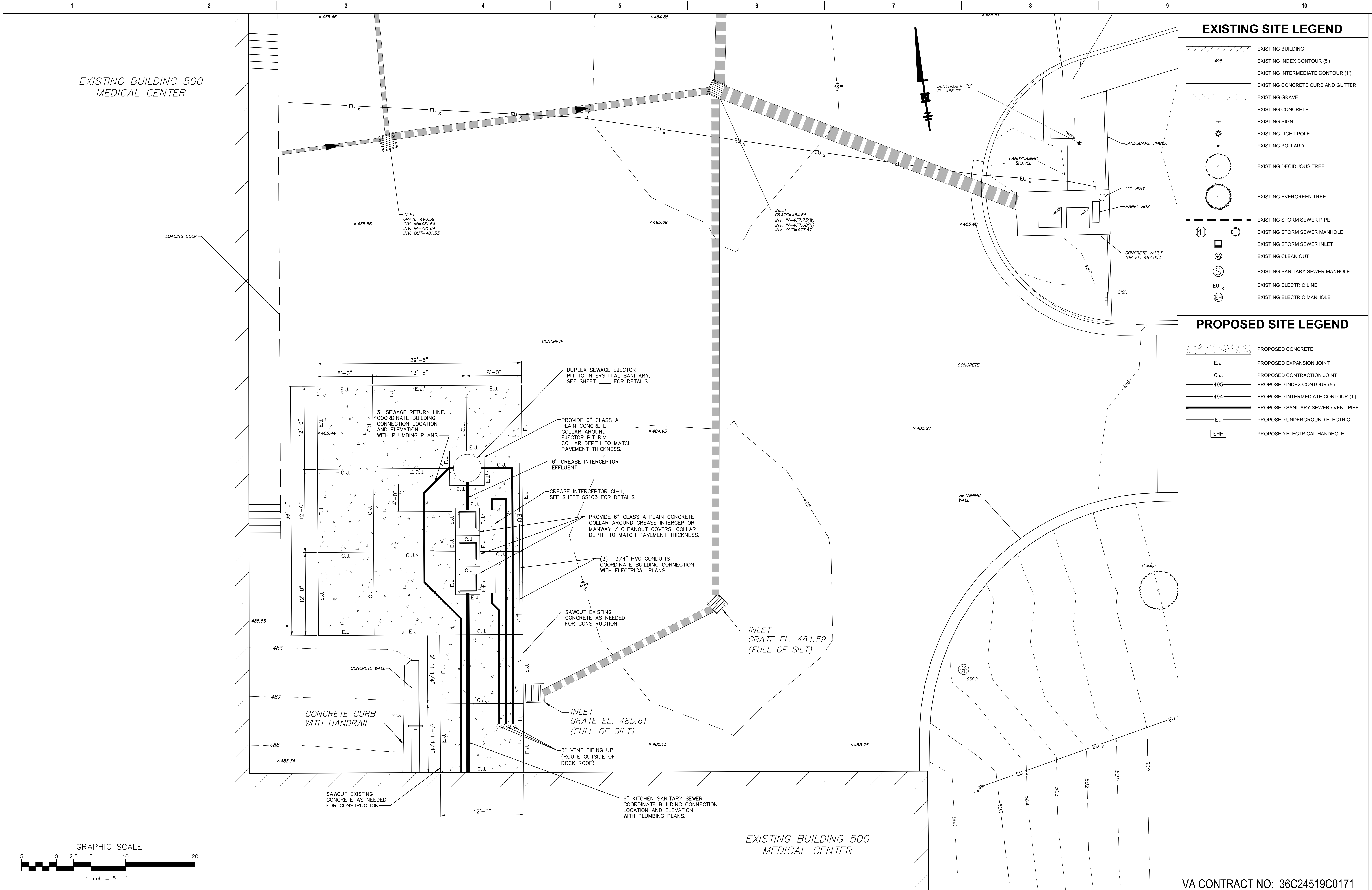
Drawing Title
EXISTING SITE AND DEMOLITION PLAN
Approved: Project Director

Phase
100% CONSTRUCTION DOCUMENTS
FULLY SPRINKLERED

Project Title
RENOVATE/UPGRADE NFS KITCHEN - BUILDING 500 BASEMENT
Location
510 BUTLER AVENUE, MARTINSBURG, WV 25405
Issue Date
02/12/21
Checked
KWB
Drawn
DLK

Project Number
613-19-103
Building Number
500
Drawing Number
GS101

G:\20080\Kitchen Project\20080_05102.dwg 2-10-21 03:53:17 PM kbeldin



--	--	--	--	--	--	--	--	--	--	--	--	--	--	--	--	--	--	--	--	--	--	--	--	--	--	--	--	--	--	--	--	--	--	--	--	--	--	--	--	--	--	--	--	--	--	--	--	--	--	--	--	--	--	--	--	--	--	--	--	--	--	--	--	--	--	--	--	--	--	--	--	--	--	--	--	--	--	--	--	--	--	--	--	--	--	--	--	--	--	--	--	--	--	--	--	--	--	--	--	--	--	--	--	--	--	--	--	--	--	--	--	--	--	--	--	--	--	--	--	--	--	--	--	--	--	--	--	--	--	--	--	--	--	--	--	--	--	--	--	--	--	--	--	--	--	--	--	--	--	--	--	--	--	--	--	--	--	--	--	--	--	--	--	--	--	--	--	--	--	--	--	--	--	--	--	--	--	--	--	--	--	--	--	--	--	--	--	--	--	--	--	--	--	--	--	--	--	--	--	--	--	--	--	--	--	--	--	--	--	--	--	--	--	--	--	--	--	--	--	--	--	--	--	--	--	--	--	--	--	--	--	--	--	--	--	--	--	--	--	--	--	--	--	--	--	--	--	--	--	--	--	--	--	--	--	--	--	--	--	--	--	--	--	--	--	--	--	--	--	--	--	--	--	--	--	--	--	--	--	--	--	--	--	--	--	--	--	--	--	--	--	--	--	--	--	--	--	--	--	--	--	--	--	--	--	--	--	--	--	--	--	--	--	--	--	--	--	--	--	--	--	--	--	--	--	--	--	--	--	--	--	--	--	--	--	--	--	--	--	--	--	--	--	--	--	--	--	--	--	--	--	--	--	--	--	--	--	--	--	--	--	--	--	--	--	--	--	--	--	--	--	--	--	--	--	--	--	--	--	--	--	--	--	--	--	--	--	--	--	--	--	--	--	--	--	--	--	--	--	--	--	--	--	--	--	--	--	--	--	--	--	--	--	--	--	--	--	--	--	--	--	--	--	--	--	--	--	--	--	--	--	--	--	--	--	--	--	--	--	--	--	--	--	--	--	--	--	--	--	--	--	--	--	--	--	--	--	--	--	--	--	--	--	--	--	--	--	--	--	--	--	--	--	--	--	--	--	--	--	--	--	--	--	--	--	--	--	--	--	--	--	--	--	--	--	--	--	--	--	--	--	--	--	--	--	--	--	--	--	--	--	--	--	--	--	--	--	--	--	--	--	--	--	--	--	--	--	--	--	--	--	--	--	--	--	--	--	--	--	--	--	--	--	--	--	--	--	--	--	--	--	--	--	--	--	--	--	--	--	--	--	--	--	--	--	--	--	--	--	--	--	--	--	--	--	--	--	--	--	--	--	--	--	--	--	--	--	--	--	--	--	--	--	--	--	--	--	--	--	--	--	--	--	--	--	--	--	--	--	--	--	--	--	--	--	--	--	--	--	--	--	--	--	--	--	--	--	--	--	--	--	--	--	--	--	--	--	--	--	--	--	--	--	--	--	--	--	--	--	--	--	--	--	--	--	--	--	--	--	--	--	--	--	--	--	--	--	--	--	--	--	--	--	--	--	--	--	--	--	--	--	--	--	--	--	--	--	--	--	--	--	--	--	--	--	--	--	--	--	--	--	--	--	--	--	--	--	--	--	--	--	--	--	--	--	--	--	--	--	--	--	--	--	--	--	--	--	--	--	--	--	--	--	--	--	--	--	--	--	--	--	--	--	--	--	--	--	--	--	--	--	--	--	--	--	--	--	--	--	--	--	--	--	--	--	--	--	--	--	--	--	--	--	--	--	--	--	--	--	--	--	--	--	--	--	--	--	--	--	--	--	--	--	--	--	--	--	--	--	--	--	--	--	--	--	--	--	--	--	--	--	--	--	--	--	--	--	--	--	--	--	--	--	--	--	--	--	--	--	--	--	--	--	--	--	--	--	--	--	--	--	--	--	--	--	--	--	--	--	--	--	--	--	--	--	--	--	--	--	--	--	--	--	--	--	--	--	--	--	--	--	--	--	--	--	--	--	--	--	--	--	--	--	--	--	--	--	--	--	--	--	--	--	--	--	--	--	--	--	--	--	--	--	--	--	--	--	--	--	--	--	--	--	--	--	--	--	--	--	--	--	--	--	--	--	--	--	--	--	--	--	--	--	--	--	--	--	--	--	--	--	--	--	--	--	--	--	--	--	--	--	--	--	--	--	--	--	--	--	--	--	--	--	--	--	--	--	--	--	--	--	--	--	--	--	--	--	--	--	--	--	--	--	--	--	--	--	--	--	--	--	--	--	--	--	--	--	--	--	--	--	--	--	--	--	--	--	--	--	--	--	--	--	--	--	--	--	--	--	--	--	--	--	--	--	--	--	--	--	--	--	--	--	--	--	--	--	--	--	--	--	--	--	--	--	--	--	--	--	--	--	--	--	--	--	--	--	--	--	--	--	--	--	--	--	--	--	--	--	--	--	--	--	--	--	--	--	--	--	--	--	--	--	--	--	--	--	--	--	--	--	--	--	--	--	--	--	--	--	--	--	--	--	--	--	--	--	--	--	--	--	--	--	--	--	--	--	--	--	--	--	--	--	--	--	--	--	--	--	--	--	--	--	--	--	--	--	--	--	--	--	--	--	--	--	--	--	--	--	--	--	--	--	--	--	--	--	--	--	--	--	--	--	--	--	--	--	--	--	--	--	--	--	--	--	--	--	--	--	--	--	--	--	--	--	--	--	--	--	--	--	--	--	--	--	--	--	--	--	--	--	--	--	--	--	--	--	--	--	--	--	--	--	--	--	--	--	--	--	--	--	--	--	--	--	--	--	--	--	--	--	--	--	--	--	--	--	--	--	--	--	--	--	--	--	--	--	--	--	--	--	--	--	--	--	--	--	--	--	--	--	--	--	--	--	--	--	--	--	--	--	--	--	--	--	--	--	--	--	--	--	--	--	--	--	--	--	--	--	--	--	--	--	--	--	--	--	--	--	--	--	--	--	--	--	--	--	--	--	--	--	--	--	--	--	--	--	--	--	--	--	--	--	--	--	--	--	--	--	--	--	--	--	--	--	--	--	--	--	--	--	--	--	--	--	--	--	--	--	--	--	--	--	--	--	--	--	--	--	--	--	--	--	--	--	--	--	--	--	--	--	--	--	--	--	--	--	--	--	--	--	--	--	--	--	--	--	--	--	--	--	--	--	--	--	--	--	--	--	--	--	--	--	--	--	--	--	--	--	--	--	--	--	--	--	--	--	--	--	--	--	--	--	--	--	--	--	--	--	--	--	--	--	--	--	--	--	--	--	--	--	--	--	--	--	--	--	--	--	--	--	--	--	--	--	--	--	--	--	--	--	--	--	--	--	--	--	--	--	--	--	--	--	--	--	--	--	--	--	--	--	--	--	--	--	--	--	--	--	--	--	--	--	--	--	--	--	--	--	--	--	--	--	--	--	--	--	--	--	--	--	--	--	--	--	--	--	--	--	--	--	--	--	--	--	--	--	--	--	--	--	--	--	--	--	--	--	--	--	--	--	--	--	--	--	--	--	--	--	--	--	--	--	--	--	--	--	--	--	--	--	--	--

G:\20080\Kitchen Project\20080_05103.dwg 2-10-21 03:53:28 PM kbeldin

95% CONSTRUCTION DOCUMENTS SUBMISSION	02.12.2021
60% DESIGN DEVELOPMENT SUBMISSION	09.11.2020
30% SCHEMATIC DESIGN SUBMISSION	05.24.2020
Revisions:	Date:

CONSULTANT

GD&F
GWIN
DOBSON &
FOREMAN
ENGINEERS
3121 Fairway Drive
Altoona, PA 16602
814.943.5214
gdandfengineers.com

ARCHITECT/ENGINEER OF RECORD

Bancroft
BANCROFT ARCHITECTS + ENGINEERS
www.bancroft-ae.com
700 Nicholas Bldg. Suite 300
Elk Grove Village IL 60007
T: 847.952.9362 F: 847.952.9403
www.bancroft-ae.com
Bancroft-AE Project No. 18-133

STAMP

Office of
Construction
and Facilities
Management

VA

U.S. Department
of Veterans Affairs

Drawing Title

GREASE INTERCEPTOR
PROFILE, NOTES AND DETAIL

Approved: Project Director

Phase

100% CONSTRUCTION
DOCUMENTS

FULLY SPRINKLERED

VA CONTRACT NO: 36C24519C0171

Project Title

RENOVATE/UPGRADE NFS KITCHEN
- BUILDING 500 BASEMENT

Location

510 BUTLER AVENUE, MARTINSBURG, WV 25405

Issue Date

02/12/21

Checked

KWB

Drawn

DLK

Project Number

613-19-103
Building Number
500

Drawing Number

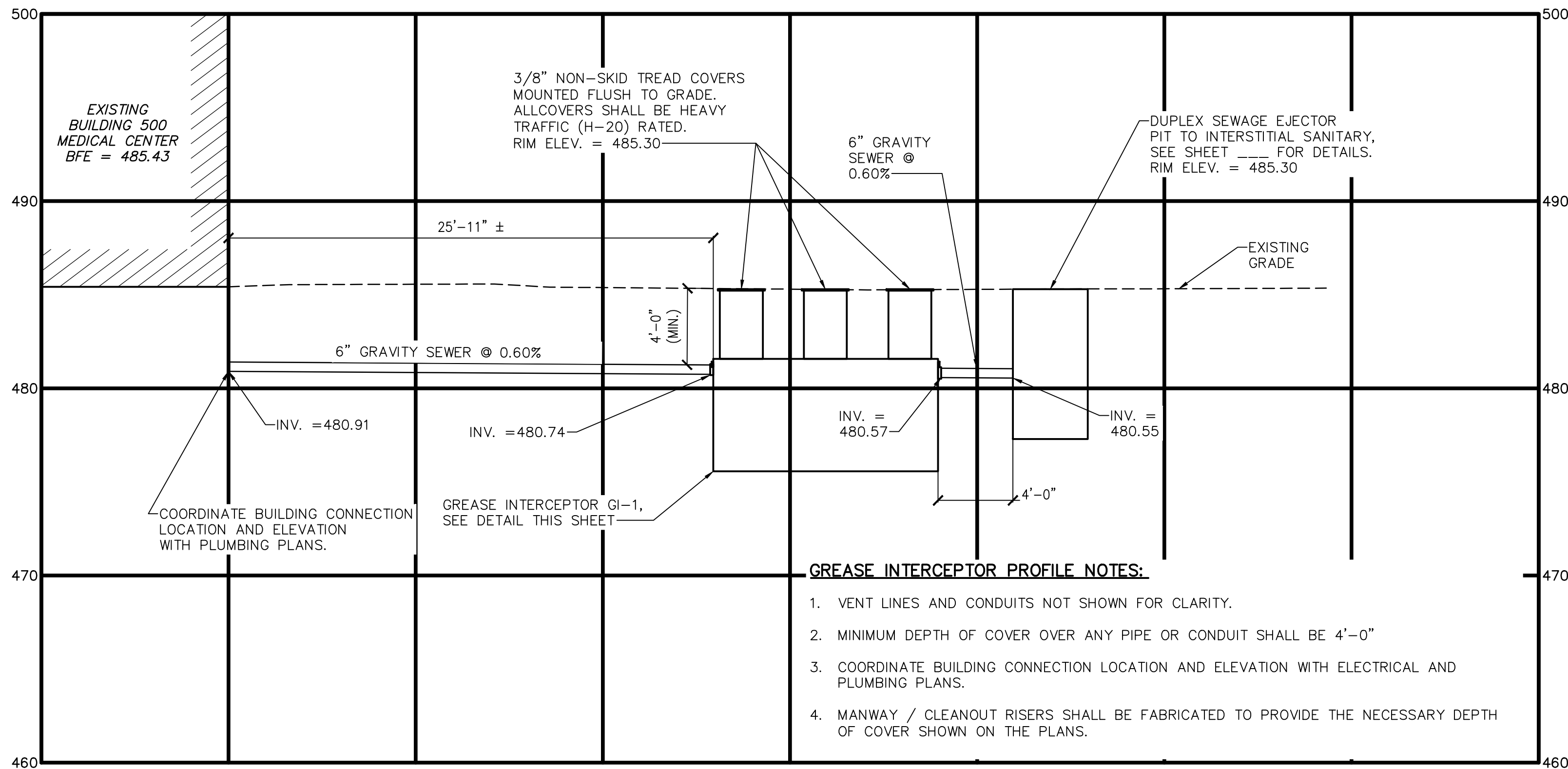
GS103

EXISTING SITE LEGEND

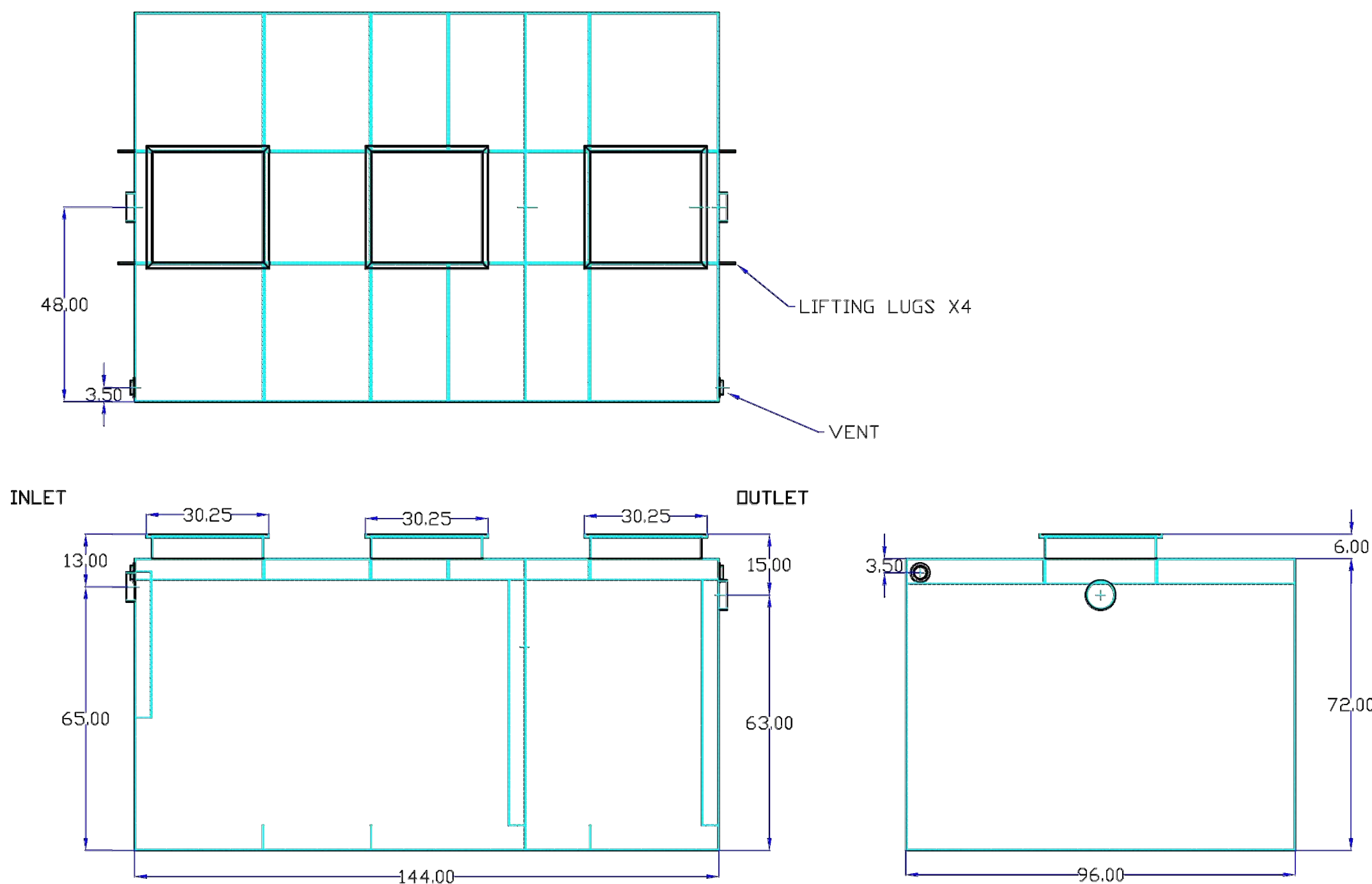
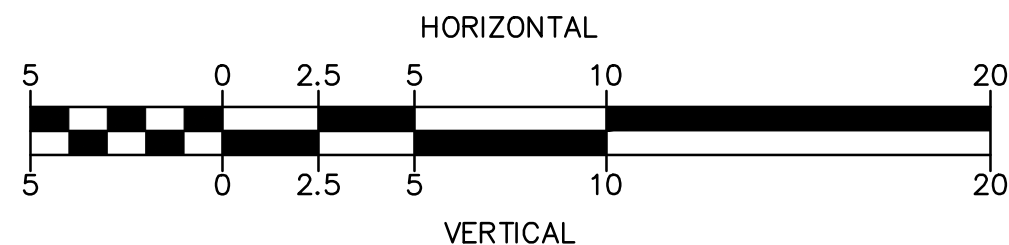
	EXISTING BUILDING
	EXISTING INDEX CONTOUR (5')
	EXISTING INTERMEDIATE CONTOUR (1')
	EXISTING CONCRETE CURB AND GUTTER
	EXISTING GRAVEL
	EXISTING CONCRETE
	EXISTING SIGN
	EXISTING LIGHT POLE
	EXISTING BOLLARD
	EXISTING DECIDUOUS TREE
	EXISTING EVERGREEN TREE
	EXISTING STORM SEWER PIPE
	EXISTING STORM SEWER MANHOLE
	EXISTING STORM SEWER INLET
	EXISTING CLEAN OUT
	EXISTING SANITARY SEWER MANHOLE
	EXISTING ELECTRIC LINE
	EXISTING ELECTRIC MANHOLE

PROPOSED SITE LEGEND

	PROPOSED CONCRETE
	PROPOSED EXPANSION JOINT
	PROPOSED CONTRACTION JOINT
	PROPOSED INDEX CONTOUR (5')
	PROPOSED INTERMEDIATE CONTOUR (1')
	PROPOSED SANITARY SEWER / VENT PIPE
	PROPOSED UNDERGROUND ELECTRIC
	PROPOSED ELECTRICAL HANDHOLE



GRAPHIC SCALE



GREASE INTERCEPTOR GENERAL NOTES:

1. GREASE INTERCEPTOR SHALL BE AN ALL WELDED STEEL GREASE INTERCEPTOR WITH MINIMUM 3,500 GALLON CAPACITY, 17,460 LBS. GREASE SLUDGE CAPACITY, ROCKFORD SANITARY SYSTEMS, INC. MODEL RGI-3500 OR EQUAL.
2. INTERCEPTOR SHALL HAVE 6" DIA. THREADED INFLUENT AND EFFLUENT CONNECTIONS AND 3" DIA. VENT CONNECTIONS.
3. MANWAY / CLEANOUT COVERS SHALL HAVE REMOVABLE 3/8" NON-SKID TREAD COVERS THAT ARE TO BE MOUNTED FLUSH TO GRADE. THE COVERS SHALL BE CAPABLE OF SUPPORTING HEAVY TRAFFIC (H-20) LOADINGS SECURED WITH STAINLESS STEEL FLAT HEAD SCREWS, HEAVY DUTY LEAK PROOF GASKET AND WITH BITUMINOUS OUTSIDE COATING.
4. GREASE INTERCEPTOR SHALL BE STORED AND INSTALLED FOLLOWING ALL MANUFACTURER'S RECOMMENDATIONS AND SPECIFICATIONS.

1 GREASE INTERCEPTOR DETAIL

NTS

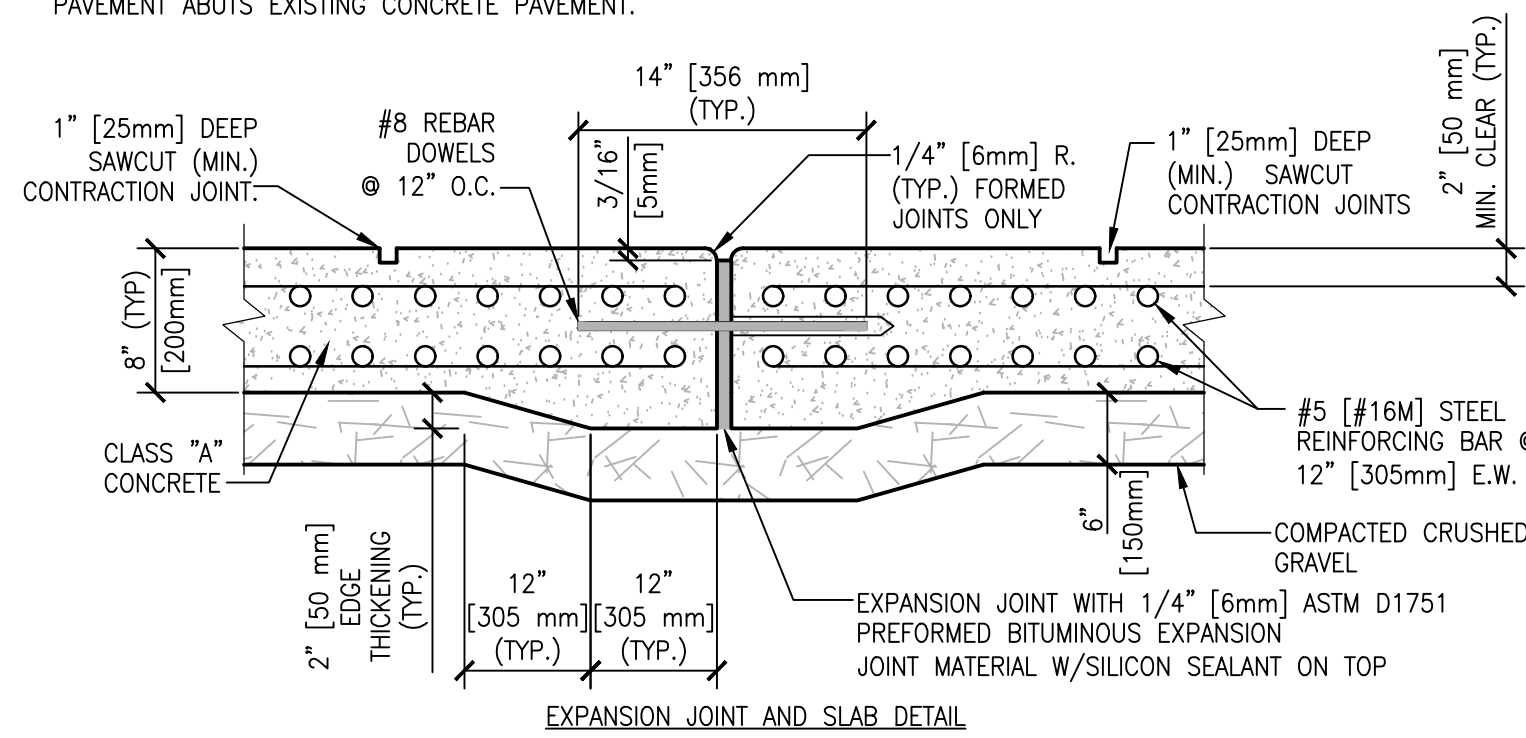
GENERAL NOTES:

1. THE VAMC MARTINSBURG MASTER UTILITY PLAN HAS IDENTIFIED A POTENTIAL UNDERGROUND STORAGE TANK IN THE VICINITY OF THE IMPROVEMENTS SHOWN ON THIS PLAN. NO INDICATORS SUCH AS VENT PIPING, CLEANOUTS, ETC. WERE ENCOUNTERED DURING THE FIELD SURVEY. IT IS EXPRESSLY STATED THAT INFORMATION CONCERNING EXISTING FACILITIES AND SUBSURFACE CONDITIONS SHOWN ON THESE DRAWINGS WAS OBTAINED FROM DESIGN/RECORD DRAWINGS AND FIELD SURVEYS AND MAY NOT REPRESENT CONDITIONS EXACTLY AS THEY EXIST AT THE PRESENT. THE FACILITIES ARE DEPICTED BASED UPON THE BEST AVAILABLE KNOWLEDGE AT THE TIME OF PLAN DRAWING PREPARATION. WHEN THE INFORMATION PRESENTED HERE IS USED BY THE CONTRACTOR IN THE DEMOLITION, MODIFICATION OR CONSTRUCTION OF THE WORK, ACCURACY AND/OR COMPLETENESS OF THE INFORMATION IS NOT GUARANTEED OR WARRANTED BY THE ENGINEER OR ANY AGENT THEREOF. THE CONTRACTOR SHALL REVIEW THE DRAWINGS PERTAINING TO EXISTING FACILITIES AND PERFORM THE NECESSARY ONSITE INSPECTIONS TO DEVELOP A FULL UNDERSTANDING OF THE SCOPE OF THE WORK. ANY DEVIATIONS FROM THE INFORMATION DEPICTED ON THE DRAWINGS, FOUND DURING CONSTRUCTION, WILL NOT BE THE BASIS OF A CLAIM FOR ADDITIONAL COMPENSATION.
2. THE CONTRACTOR IS ADVISED OF THE EXISTENCE OF UNDERGROUND WATERLINES, STORAGE TANKS, SANITARY SEWERS, GAS LINES, SERVICE LINES, ELECTRIC AND TELEPHONE, AND OTHER UTILITIES. THE HORIZONTAL AND VERTICAL ALIGNMENTS ARE SHOWN ON THE DRAWINGS FOR INFORMATION PURPOSES ONLY. THE CONTRACTOR IS ADVISED THAT PRIOR TO ANY EARTH DISTURBANCE ACTIVITIES, THEY SHALL PERFORM EXPLORATORY EXCAVATIONS TO DETERMINE SAID LOCATIONS. IF CONFLICTS OCCUR WITH EXISTING UTILITIES, THE CONTRACTOR SHALL NOTIFY THE COR AND A/E OF SAID CONFLICTS IMMEDIATELY. THE CONTRACTOR SHALL ADJUST THE LOCATION OF THE PROPOSED PIPING AND STRUCTURES AS COORDINATED AND APPROVED BY THE COR AND A/E. THE CONTRACTOR SHALL UNDERSTAND THAT NO SEPARATE PAYMENT SHALL BE MADE FOR THE REQUIRED EXPLORATORY EXCAVATIONS OR SUBSEQUENT ADJUSTMENTS REQUIRED. IN ADDITION, THE CONTRACTOR SHALL REPAIR ALL UTILITIES DAMAGED DURING THE COURSE OF CONSTRUCTION TO THE SATISFACTION OF THE VA. THE CONTRACTOR SHALL ENSURE THE MAINTENANCE OF ALL UTILITY SERVICES AND LIMIT SHUTDOWNS, IF REQUIRED, TO A MINIMUM. NO SEPARATE PAYMENTS SHALL BE MADE FOR SAID UTILITY REPAIRS AND SERVICE MAINTENANCE.
3. CONTRACTOR SHALL DESIGN, FURNISH AND INSTALL STEEL SHEET PILING OR OTHER EARTH RETAINING SYSTEM: DEPTH, TYPE, SIZE AND METHOD AS NEEDED TO COMPLETE CONSTRUCTION. CONTRACTOR SHALL PROVIDE TEMPORARY SUPPORT/SHORING AS NEEDED. THE LOADING AREA IS TO REMAIN OPERATIONAL DURING THE DURATION CONSTRUCTION AND THE MAINTENANCE OF THE STABILITY OF EXISTING STRUCTURES AND UTILITIES THROUGHOUT THE DURATION OF CONSTRUCTION IS THE SOLE RESPONSIBILITY OF THE CONTRACTOR.
4. THE CONTRACTOR WILL, AT ALL TIMES THROUGHOUT THE WORK, COOPERATE FULLY WITH THE COR IN PERMITTING ALL NECESSARY OPERATIONS OF THE MEDICAL CENTER TO PROCEED UNIMPEDED BY THE CONTRACTOR'S OPERATIONS.
5. SERVICE OUTAGES WILL BE KEPT TO THE MINIMUM EXTENT PRACTICABLE. THE CONTRACTOR WILL MAINTAIN A RECORD OF THE DATE, TIME, AND DURATION OF ALL OUTAGES THROUGHOUT THE PERFORMANCE OF THE WORK. IN NO EVENT WILL ANY SERVICE BE PERMITTED TO BE CURTAILED DURING NONWORKING HOURS, OVERNIGHT OR OVER WEEKENDS OR HOLIDAYS, UNLESS SPECIFICALLY APPROVED AND PLANNED IN ADVANCE. ALL MATERIALS NECESSARY TO INSTALL THE WORK NECESSITATING THE OUTAGE MUST BE ON SITE AND READY FOR INSTALLATION BEFORE NOTIFYING THE COR OF THE ANTICIPATED SHUTDOWN.
6. THE CONTRACTOR WILL PLAN, COORDINATE AND SEQUENCE THEIR WORK IN ACCORDANCE WITH THE REQUIREMENTS SET FORTH HEREIN AND TO MEET THE NEEDS OF THE MEDICAL CENTER. THE VA RESERVES THE RIGHT TO COORDINATE THE SEQUENCING OF WORK ELEMENTS IN WHOLE OR IN PART AS THE JOB CONDITIONS MAY REQUIRE.
7. THE CONTRACTOR WILL NOTE THAT THE WORK MAY INVOLVE MODIFICATIONS TO AND THE DEMOLITION OF EXISTING FACILITIES AND STRUCTURES WHICH, DUE TO THE NATURE OF THE VARIOUS ITEMS OF THE WORK, MUST BE COMPLETED, IN SOME INSTANCES, IN SEQUENCE WITH ONE ANOTHER DUE TO THE PHYSICAL REQUIREMENTS OF THE WORK OR THE OPERATIONAL NEEDS OF THE MEDICAL CENTER.
8. THE CONTRACTOR MUST AT ALL TIMES COORDINATE ITS WORK SCHEDULE, AND SEQUENCING THROUGH THE COR TO AVOID INTERFERENCE WITH NECESSARY OPERATIONS. IT IS ANTICIPATED THAT MAJOR ALTERATIONS OR ADJUSTMENTS TO THE SEQUENCING AND SCHEDULING OF THE WORK WILL BE PLANNED IN ADVANCE.
9. HORIZONTAL CONTROLS ARE REFERENCED TO THE WEST VIRGINIA STATE PLANE (NAD 83), NORTH ZONE. VERTICAL CONTROLS ARE REFERENCED TO THE NORTH AMERICAN VERTICAL DATUM OF 1988 (NAVD 88).

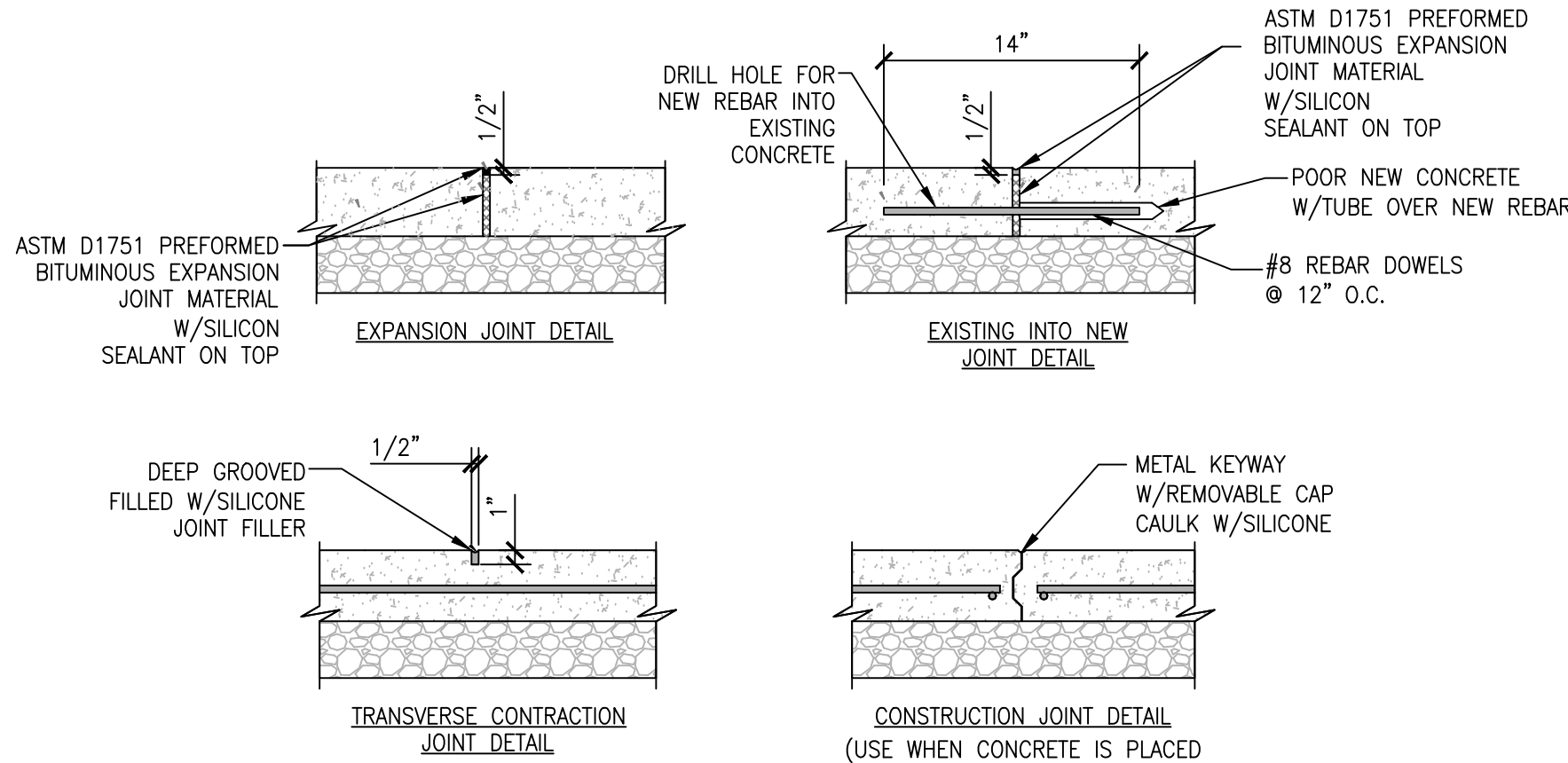
H:\JOBS\20080 - Bancroft Architects - Martinsburg VAMC Audiology Kitchen Project\95% Design Submission\CAD Files\20080_GS104.dwg 2-11-21 08:45:10 AM kbeldin

NOTES:

- EXPANSION JOINTS SHALL BE LOCATED WHERE CONCRETE ABUTS CONCRETE DRIVEWAYS, CURB OR OTHER ADJACENT STRUCTURES.
- ONE-HALF INCH BITUMINOUS JOINT FILLER SHALL BE INSTALLED AT EXPANSION JOINT LOCATIONS AND SHALL EXTEND THE FULL DEPTH OF THE CONCRETE.
- 1" [25mm] DEEP CONTRACTION JOINTS SHALL BE PLACED AT INTERVALS INDICATED ON THE PLANS.
- THE PANEL LENGTHS INDICATED ON THE PLANS ARE APPROXIMATE AND BASED UPON THE BEST AVAILABLE INFORMATION. PANEL LENGTHS AND DIMENSIONS MUST BE FIELD VERIFIED TO THE NEAREST EXISTING JOINT AND ANY DEVIATION FROM THE LENGTHS AND WIDTHS INDICATED ON THE PLANS SHALL BE CONFIRMED BY THE COR AND PROJECT A/C BEFORE INSTALLATION.
- EDGE THICKENING SHALL BE PROVIDED AT ALL EXPANSION JOINTS AND AREAS WHERE THE PROPOSED CONCRETE PAVEMENT ABUTS EXISTING CONCRETE PAVEMENT.



1 CONCRETE PAVEMENT REPAIR DETAIL
NTS



2 CONCRETE JOINTING DETAILS
NTS

EXISTING SITE LEGEND

	EXISTING BUILDING
	EXISTING INDEX CONTOUR (5)
	EXISTING INTERMEDIATE CONTOUR (1)
	EXISTING CONCRETE CURB AND GUTTER
	EXISTING GRAVEL
	EXISTING CONCRETE
	EXISTING SIGN
	EXISTING LIGHT POLE
	EXISTING BOLLARD
	EXISTING DECIDUOUS TREE
	EXISTING EVERGREEN TREE
	EXISTING STORM SEWER PIPE
	EXISTING STORM SEWER MANHOLE
	EXISTING STORM SEWER INLET
	EXISTING CLEAN OUT
	EXISTING SANITARY SEWER MANHOLE
	EXISTING ELECTRIC LINE
	EXISTING ELECTRIC MANHOLE

PROPOSED SITE LEGEND

	PROPOSED CONCRETE
	PROPOSED EXPANSION JOINT
	PROPOSED CONTRACTION JOINT
	PROPOSED INDEX CONTOUR (5)
	PROPOSED INTERMEDIATE CONTOUR (1)
	PROPOSED SANITARY SEWER / VENT PIPE
	PROPOSED UNDERGROUND ELECTRIC
	PROPOSED ELECTRICAL HANDHOLE

VA CONTRACT NO: 36C24519C0171

		CONSULTANT <div><div>GD&F</div><div>GWIN DOBSON & FOREMAN ENGINEERS</div></div> <div>3121 Fairway Drive Altoona, PA 16602 814.943.5214 gdfengineers.com</div>	ARCHITECT/ENGINEER OF RECORD <div><div>Bancroft</div><div>BANCROFT ARCHITECTS + ENGINEERS www.bancroft-ae.com</div></div> <div>700 Nicholas Bl. d. Suite 300 Elk Grove Village, IL 60007 T: 847.992.9362 F: 847.992.9403 www.bancroft-ae.com Bancroft-AE Project No. 18-133</div>	STAMP	Office of Construction and Facilities Management <div>VAU.S. Department of Veterans Affairs</div>	Drawing Title CONCRETE PAVEMENT RESTORATION NOTES AND DETAILS	Phase 100% CONSTRUCTION DOCUMENTS	Project Title RENOVATE/UPGRADE NFS KITCHEN - BUILDING 500 BASEMENT	Project Number 613-19-103		
						Approved: Project Director		Location 510 BUTLER AVENUE, MARTINSBURG, WV 25405	Building Number 500	Drawing Number	
95% CONSTRUCTION DOCUMENTS SUBMISSION 60% DESIGN DEVELOPMENT SUBMISSION 30% SCHEMATIC DESIGN SUBMISSION Revisions:								Issue Date 02/12/21	Checked KWB	Drawn DLK	GS104
02.12.2021 09.11.2020 05.24.2020 Date:											