



**DEPARTMENT OF THE AIR FORCE
HEADQUARTERS 316TH WING (AFDW)
JOINT BASE ANDREWS, MARYLAND 20762**

MEMORANDUM FOR 316 CES

FROM: AFDW/SEW

SUBJECT: CONTRACTORS ACKNOWLEDGEMENT OF EXPLOSIVES HAZARDS

References: (a) DESR 6055.09_AFMAN 91-201 EXPLOSIVES SAFETY STANDARDS

1. Workers must follow guidance provided in the safety briefings they will receive prior to entering the explosives environment by their escort. The personnel listed below understand that they will be working inside of the explosives clear zone of the Munitions Storage Area. This explosive clear zone presents a hazard to anyone within it, due to the risk of a mishap incident. In the event of a mishap, follow directions of your escort and evacuate to a minimum of 2500ft for accountability.

OPTION 1- NORTHEAST EVACUATION POINT- SUPPLY BUILDING PARKING LOT 3066

OPTION 2- SOUTHWEST EVACUATION POINT - BASE LAKE ROAD

2. Likelihood of a Mishap: IMPROBABLE // CONTINUOUS //MARGINAL //HIGH

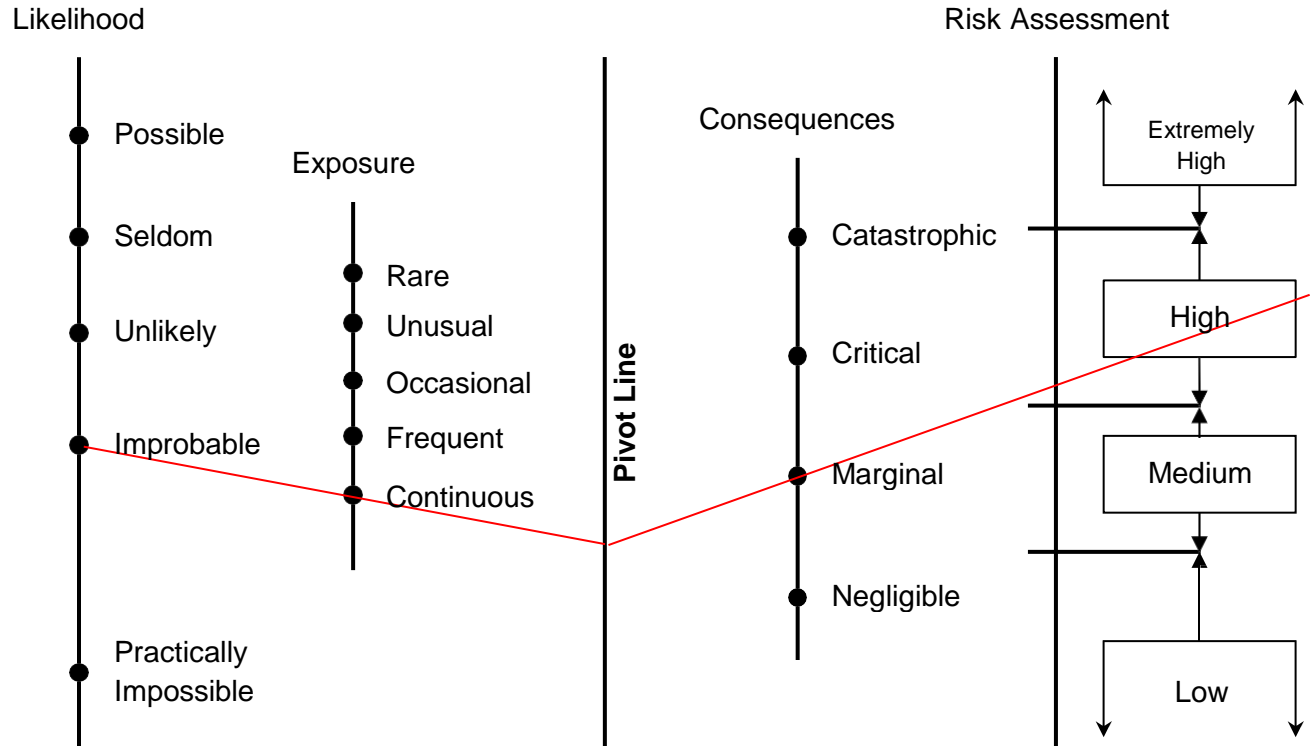
3. By signing this statement, we the undersigned understand and accept the risk of working in and around an explosives clear zone. Personnel below will be provided an explosives safety briefing prior to entering the areas.

4. The following activities fall within the explosive clear zones: Construction of the Hazardous Cargo Pad and Explosives Ordnance Disposal Proficiency Range.

5. Please return signed copies to: alan.law.2@us.af.mil, DSN 612-6375//COM: 240-612-6375

LAST NAME	FIRST NAME	RANK/CIV	DATE	SIGNATURE

Exception Decision Nomograph – Day-to-Day Operations



Title: Contractors Exposed By Munitions Storage Area Explosives Arcs **Exception Type:** IBD

Standards Not Met

V3.E3.1.1.2.2.6. (Added)(AF) Inhabited Building Distance (IBD/1250ft) will not be maintained to civilian construction workers of the new Hazardous Cargo Pad and Explosives Ordnance Disposal Range from the Munitions Storage Area. This separation requirement applies to all construction activities related to PESs whether being accomplished by civilian, military, or host-nation personnel. Construction activities are tentatively scheduled to start in FY24. Personnel will be inside of the various arcs at the closest point being 55ft outside of the fence line.

Justification

Munitions maintenance consist of storage, inspections, and movement for when munition trailers are transitory to and from the flight line. This documented risk assessment, including the control measures taken, will be briefed and signature required for civilian construction personnel prior to entry inside of the arcs and to ensure they are aware of the explosives risks and evacuation point in case of emergency and lightning within 5 nautical miles. Locally maintain the signatures of the risk assessment brief until operations have been completed and personnel have permanently vacated the work site. DESR 6055.09_AFMAN 91-201 Explosives Safety Standards, para V1.E3.9.2.2. requires this risk "HIGH" to be accepted by AFDW/CC.

Alternatives

There are no alternatives since this is the location authorized by the Deputy Under Secretary of the Air Force and has an approved restrictive easement for the land outside of the installation affected by the 1250ft quantity distance arc with the incumbent land owner.

Control Measures

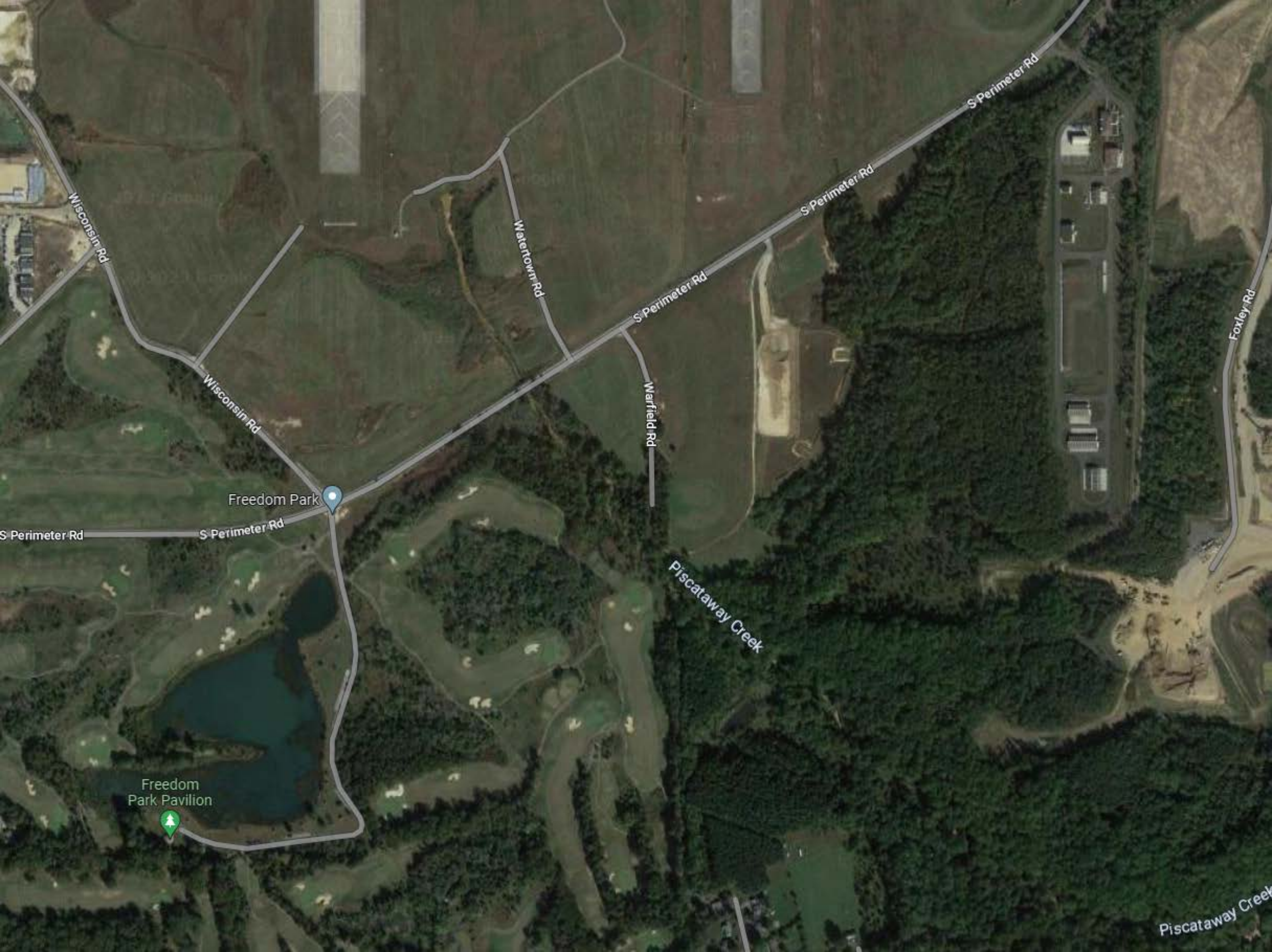
Prior to entering the Munitions Storage Area's explosives arc, personnel will be briefed in case of an emergency event, per DSER 6055.09_ AFMAN 91-201, Explosives Safety Standards, Table V1.E10.T10 Emergency Withdrawal Distance for Non-Essential Personnel, to evacuate to a minimum distance of 2500 ft. For accountability purposes, in case of an explosives mishap, Option 1 Northeast, personnel will evacuate to facility 3066 Supply Parking Lot. Option 2, Southwest, personnel will evacuate to the Base Lake Road.

Risk Assessment

PES Facility Number	ES Facility Number	Number of Personnel	Required K-Factor	Actual K-Factor	Required Distance	Actual Distance	PSI
Munition Storage Area	Explosives Clear Zone	30 C	K40	K22	1250 FT	55 FT from Fence Line of MSA	11

Personnel:

- Separation is IMD or less
- < K11; > 8 psi overpressure
- Personnel are likely to be seriously injured due to blast, fragments, debris, and translation (i.e., being struck against hard objects)
- A 20 percent or better chance of eardrum rupture



Wisconsin Rd

Watertown Rd

S Perimeter Rd

S Perimeter Rd

S Perimeter Rd

Warfield Rd

Foxley Rd

Wisconsin Rd

Freedom Park

S Perimeter Rd

S Perimeter Rd

Piscataway Creek

Freedom Park Pavilion

Piscataway Creek

Pearl Harbor Dr

Fo'C'sel

NAVSUP Building 3086

Watson Dr



Base Supply

Pearl Harbor Dr

E Perimeter Rd

Topeka Ct