

FIRST DECK PLAN - AREA F - POWER

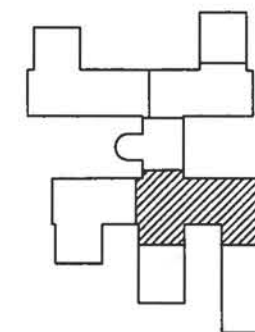
SCALE: 1/8"=1'-0"



NOTES

- UNITS DESIGNATED WITH AN ELONGATED OVAL ARE FAN TERMINAL UNITS LOCATED ABOVE CEILING. EACH UNIT CONTAINS A FRACTIONAL HORSEPOWER FAN AND ELECTRIC DUCT HEATER CONFIGURED FOR A SINGLE POINT 277 VOLT, 1 PHASE POWER CONNECTION.
- UNITS DESIGNATED WITH A RECTANGLE ARE VARIABLE AIR VOLUME UNITS LOCATED ABOVE CEILING. EACH UNIT CONTAINS A 277 VOLT, 1 PHASE CONTROL POWER CONNECTION.
- TYPICALLY DENOTES PHOTOELECTRIC SMOKE DETECTORS SENSING AN OPEN RETURN AIR OPENING ABOVE CEILING. SEE DETAIL 1/TE222/TE505.
- TO LIGHTING, SEE SHEET TE207.
- WHERE LOCATION OF A WIRING DEVICE CORRESPONDS WITH THE LOCATION OF A RAISED INSTRUCTION PLATFORM MOUNT DEVICES 18-INCHES ABOVE THE 12-INCH HIGH RAISED PLATFORM.
- PROVIDE POWER AND CONTROL JUNCTION BOXES ABOVE CEILING FOR FUTURE CARD READER, SEE DOOR MONITOR SYSTEM RISER DIAGRAM 1/TE225/TE416.

IF SHEET IS LESS THAN (22"x34") IT IS A REDUCED PRINT, SCALE REDUCED ACCORDINGLY.



KEY PLAN



GRAPHIC SCALE


1/8" = 1'-0" 6' 3' 0' 6' 12' 18'

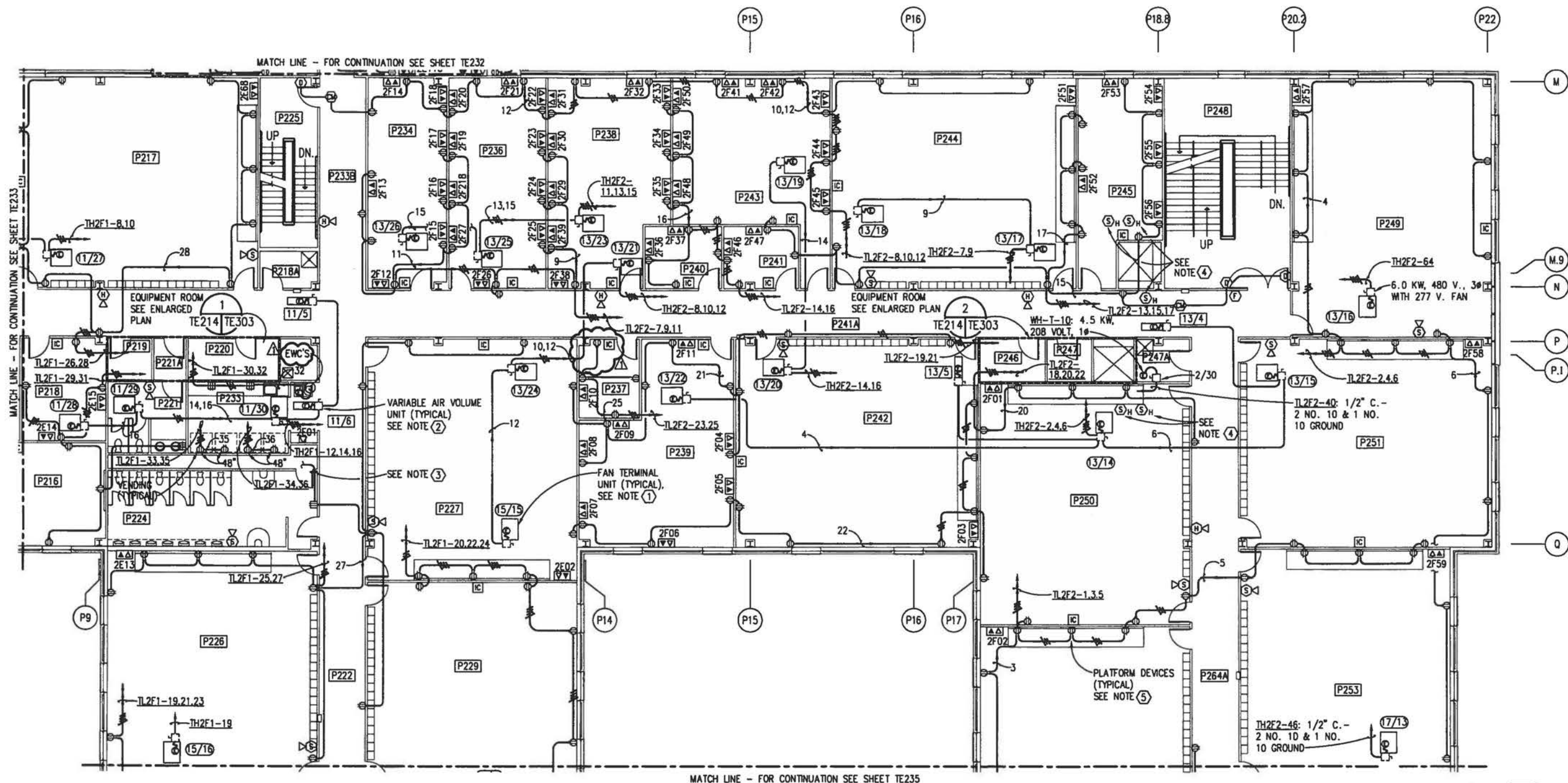
TRAINING FACILITY

REVISIONS	DESCRIPTION	DATE	APPROVED	BY
1	GENERAL REVISIONS	7/26/96	CAW	K. BEAVERS
2				
3				
4				
5				
6				
7				
8				
9				
10				
11				
12				
13				
14				
15				
16				
17				
18				
19				
20				
21				
22				
23				
24				
25				
26				
27				
28				
29				
30				
31				
32				
33				
34				
35				
36				
37				
38				
39				
40				
41				
42				
43				
44				
45				
46				
47				
48				
49				
50				
51				
52				
53				
54				
55				
56				
57				
58				
59				
60				
61				
62				
63				
64				
65				
66				
67				
68				
69				
70				
71				
72				
73				
74				
75				
76				
77				
78				
79				
80				
81				
82				
83				
84				
85				
86				
87				
88				
89				
90				
91				
92				
93				
94				
95				
96				
97				
98				
99				
100				

REVISIONS	DESCRIPTION	DATE	APPROVED	BY
1	GENERAL REVISIONS	7/26/96	CAW	K. BEAVERS
2				
3				
4				
5				
6				
7				
8				
9				
10				
11				
12				
13				
14				
15				
16				
17				
18				
19				
20				
21				
22				
23				
24				
25				
26				
27				
28				
29				
30				
31				
32				
33				
34				
35				
36				
37				
38				
39				
40				
41				
42				
43				
44				
45				
46				
47				
48				
49				
50				
51				
52				
53				
54				
55				
56				
57				
58				
59				
60				
61				
62				
63				
64				
65				
66				
67				
68				
69				
70				
71				
72				
73				
74				
75				
76				
77				
78				
79				
80				
81				
82				
83				
84				
85				
86				
87				
88				
89				
90				
91				
92				
93				
94				
95				
96				
97				
98				
99				
100				

REVISIONS	DESCRIPTION	DATE	APPROVED	BY
1	GENERAL REVISIONS	7/26/96	CAW	K. BEAVERS
2				
3				
4				
5				
6				
7				
8				
9				
10				
11				
12				
13				
14				
15				
16				
17				
18				
19				
20				
21				
22				
23				
24				
25				
26				
27				
28				
29				
30				
31				
32				
33				
34				
35				
36				
37				
38				
39				
40				
41				
42				
43				
44				
45				
46				
47				
48				
49				
50				
51				
52				
53				
54				
55				
56				
57				
58				
59				
60				
61				
62				
63				
64				
65				
66				
67				
68				
69				
70				
71				
72				
73				
74				
75				
76				
77				
78				
79				
80				
81				
82				
83				
84				
85				
86				
87				
88				
89				
90				
91				
92				
93				
94				
95				
96				
97				
98				
99				
100				

		RECORD DRAWING DATE			
DRAWING NO.		CODE LD NO.			
SPEC. NO. 06-95-		CONSTR. CONTR. NO. N62467-95-C			
NAVFAC DRAWING NO. 532131		SHEET 421 OF			
TE22		SEAL AREA			
SOUTHERN DIVISION CHARLESTON, S.C.		NAVAL WEAPONS STATION CHARLESTON, S.C.			
REV.		DESCRIPTION	PREP BY	DATE	APPROVD
Δ		GENERAL REVISIONS	K. BEAVERS	7/26/96	C.R.H.

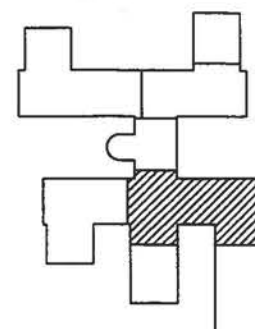


NOTES

- ① UNITS DESIGNATED WITH AN ELONGATED OVAL ARE FAN TERMINAL UNITS LOCATED ABOVE CEILING. EACH UNIT CONTAINS A FRACTIONAL HORSEPOWER FAN AND ELECTRIC DUCT HEATER CONFIGURED FOR A SINGLE POINT 277 VOLT, 1 PHASE POWER CONNECTION, U.N.O.
- ② UNITS DESIGNATED WITH A RECTANGLE ARE VARIABLE AIR VOLUME UNITS LOCATED ABOVE CEILING. EACH UNIT CONTAINS A 277 VOLT, 1 PHASE CONTROL POWER CONNECTION.
- ③ TO LIGHTING, SEE SHEET TE214.
- ④ TYPICALLY DENOTES PHOTOELECTRIC SMOKE DETECTORS SENSING AN OPEN RETURN AIR OPENING ABOVE CEILING. SEE DETAIL 1/TE222/TE505.
- ⑤ WHERE LOCATION OF A WIRING DEVICE CORRESPONDS WITH THE LOCATION OF A RAISED INSTRUCTION PLATFORM MOUNT DEVICES 18-INCHES ABOVE THE 12-INCH HIGH RAISED PLATFORM.

SECOND DECK PLAN - AREA F - POWER

SCALE: 1/8"=1'-0"



KEY PLAN

GRAPHIC SCALE

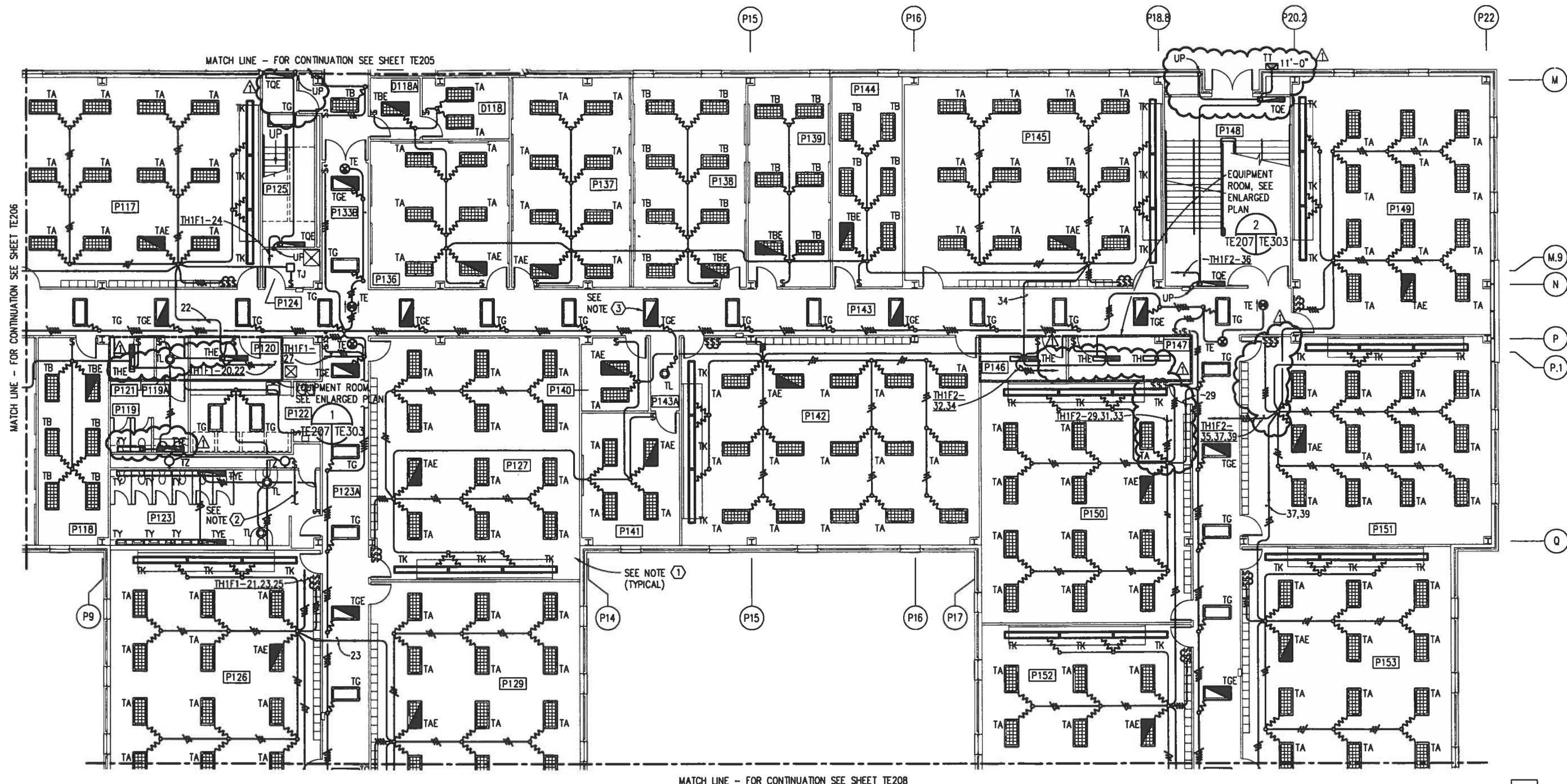
1/8" = 1'-0" 6' 3' 0' 6' 12' 18'

IF SHEET IS LESS THAN (22"x34") IT IS A REDUCED PRINT, SCALE REDUCED ACCORDINGLY.

TRAINING FACILITY

REVISIONS	DATE	APPROVED	BY	DESCRIPTION
1	7/26/95	K. BEAVERS	LA771	GENERAL REVISIONS
SOUTHERN DIVISION CHARLESTON, S.C. NAVAL WEAPONS STATION NNPTC TRAINING COMPLEX				
DEPARTMENT OF THE NAVY NAVAL FACILITIES ENGINEERING COMMAND CHARLESTON, S.C.				
DRAWING NO. 06-95- CONTROL NO. N62467-95-C NAVFAC DRAWING NO. 532131 SHEET 428 OF 428				
9512TE06/NP2 (AREA F) TE23				

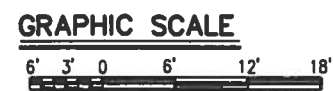
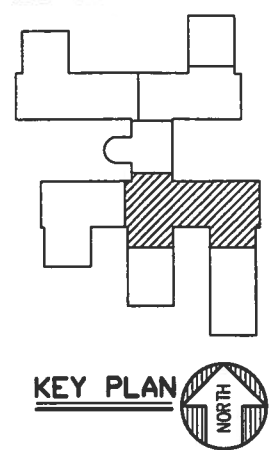
9512TE02/NPI (AREA_F)



FIRST DECK PLAN - AREA F - LIGHTING
SCALE: 1/8"=1'-0"

NOTES

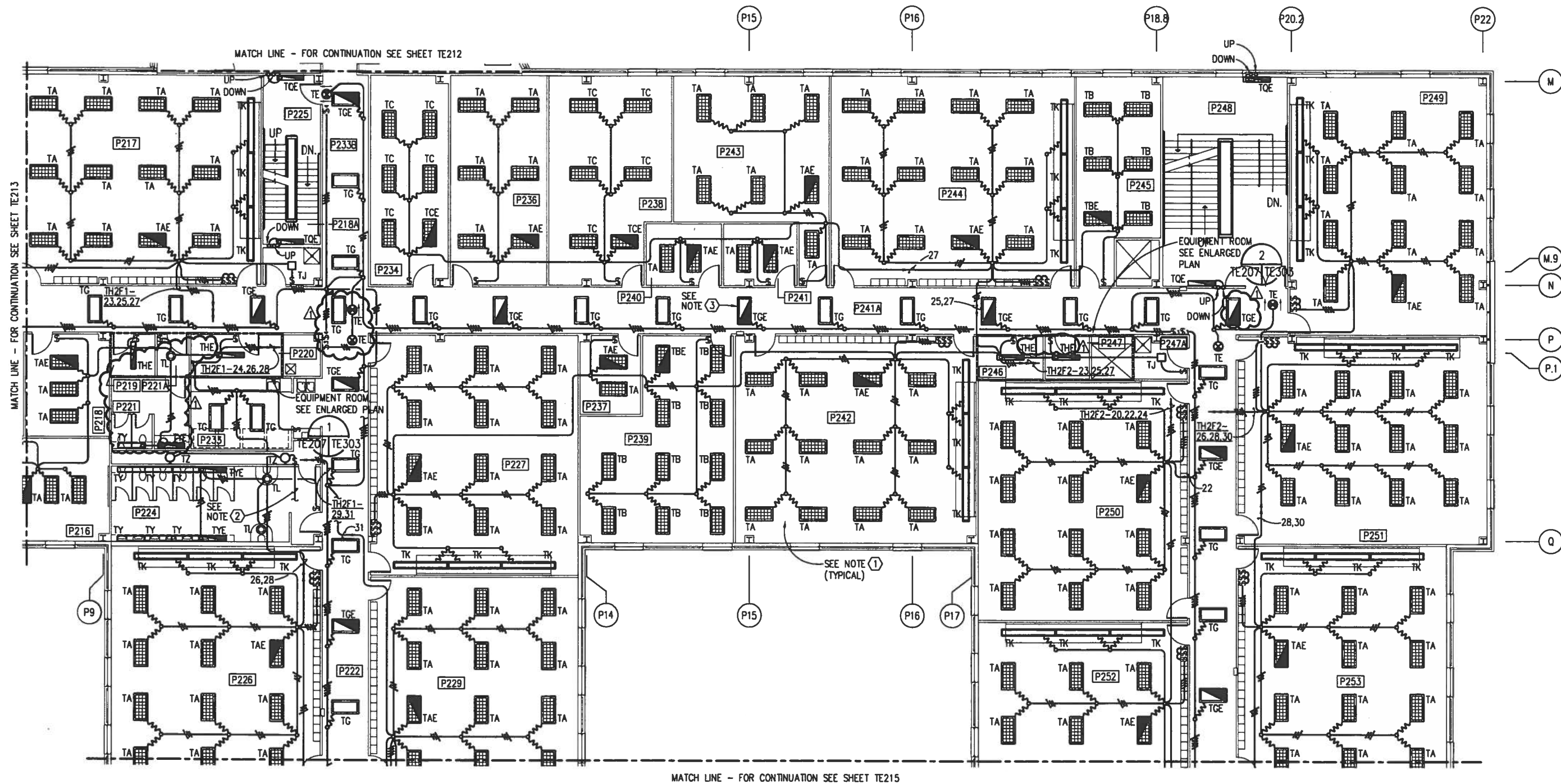
- 1 AT EACH CLASSROOM, GROUP STUDY AND LABORATORY, ONE SWITCH SHALL CONTROL OUTBOARD LAMPS IN TYPE "TA" FIXTURES, ONE SWITCH SHALL CONTROL CENTER LAMP IN TYPE "TA" FIXTURES, AND ONE SWITCH SHALL CONTROL TYPE "TK" FIXTURES.
- 2 CIRCUIT TL1F1-8 TO RECEPTACLE, FOR CONTINUATION SEE SHEET TE227.
- 3 ALL LIGHTING FIXTURES LOCATED IN CORRIDORS WHICH CONTAIN INTEGRAL EMERGENCY BATTERY UNITS SHALL BE UNSWITCHED NIGHT LIGHTS.



IF SHEET IS LESS THAN (22"x34") IT IS A REDUCED PRINT, SCALE REDUCED ACCORDINGLY.

TRAINING FACILITY

REVISIONS	REV.	DESCRIPTION	DATE	APPROVED
	1	GENERAL REVISIONS	7/25/95	K. BEAVERS
	2			
	3			
DRAWN BY: J. L. PHILLIPS CHECKED BY: J. L. PHILLIPS DATE: 7/25/95				
PROJECT: NNPTC TRAINING COMPLEX LOCATION: CHARLESTON, S.C. DIVISION: SOUTHERN DIVISION NAVAL WEAPONS STATION				
SHEET 401 OF 401				



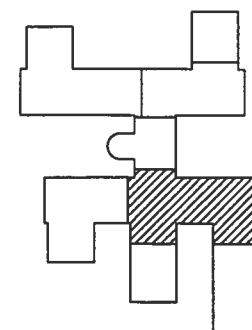
SECOND DECK PLAN - AREA F - LIGHTING

SCALE: 1/8"=1'-0"



NOTES

- ① AT EACH CLASSROOM AND LABORATORY, ONE SWITCH SHALL CONTROL OUTBOARD LAMPS IN TYPE "TA" FIXTURES, ONE SWITCH SHALL CONTROL CENTER LAMP IN TYPE "TA" FIXTURES, AND ONE SWITCH SHALL CONTROL TYPE "TK" FIXTURES.
- ② CIRCUIT TL2F1-27 TO RECEPTACLE, FOR CONTINUATION SEE SHEET TE234.
- ③ ALL LIGHTING FIXTURES LOCATED IN CORRIDORS WHICH CONTAIN INTEGRAL EMERGENCY BATTERY UNITS SHALL BE UNSWITCHED NIGHT LIGHTS.



KEY PLAN

GRAPHIC SCALE

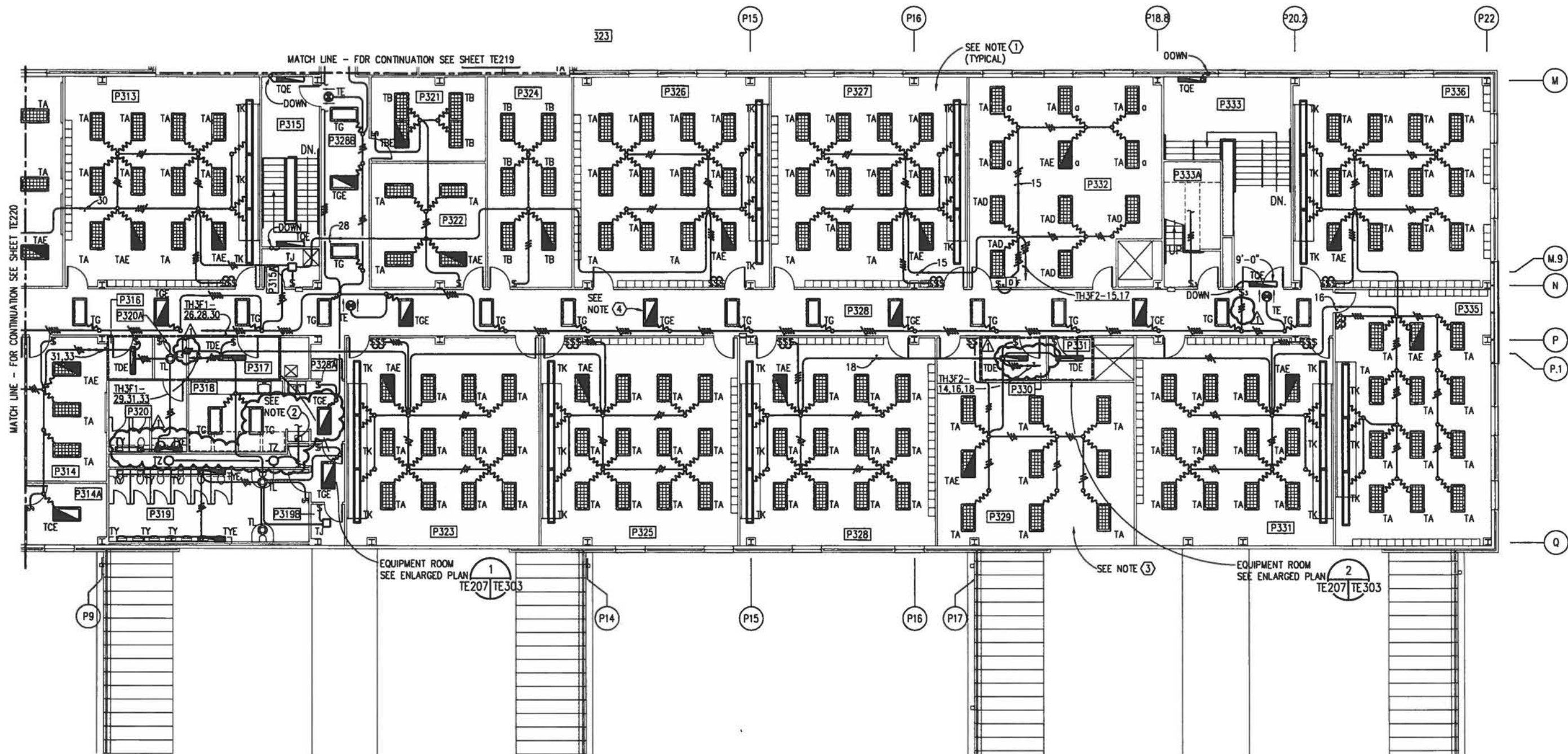
1/8" = 1'-0"

6' 3' 0' 6' 12' 18'

IF SHEET IS LESS THAN (22"x34") IT IS A REDUCED PRINT, SCALE REDUCED ACCORDINGLY.

TRAINING FACILITY

DESIGNED BY K. BEANERS	DATE 7/26/96	APPROVED EAT
REV. DESCRIPTION GENERAL REVISIONS		
SOUTHERN DIVISION CHARLESTON, S.C.		
NAVAL WEAPONS STATION NNPTC TRAINING COMPLEX		
RECORD DRAWING DATE		
CODE NO.		
DRAWING NO.		
SPEC. NO.	06-95	
CONSTRUCTION NO.	N62467-95-C	
NAVFAC DRAWING NO.	532129	
SHEET	408 OF	
TE21		



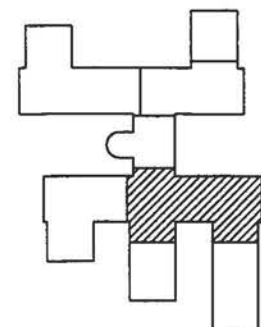
THIRD DECK PLAN - AREA F - LIGHTING

SCALE: 1/8" = 1'-0"



NOTES

- ① AT EACH CLASSROOM AND GROUP STUDY, ONE SWITCH SHALL CONTROL OUTBOARD LAMPS IN TYPE "TA" FIXTURES, ONE SWITCH SHALL CONTROL CENTER LAMP IN TYPE "TA" FIXTURES, AND ONE SWITCH SHALL CONTROL TYPE "TK" FIXTURES.
- ② CIRCUIT TL3F1-23 TO RECEPTACLE, FOR CONTINUATION SEE SHEET TE241.
- ③ ALTERNATELY SWITCH INBOARD AND OUTBOARD LAMPS WITHIN EACH FIXTURE IN THIS ROOM TO PROVIDE SEPARATE LEVELS OF ILLUMINATION.
- ④ ALL LIGHTING FIXTURES LOCATED IN CORRIDORS WHICH CONTAIN INTEGRAL EMERGENCY BATTERY UNITS SHALL BE UNSWITCHED NIGHT LIGHTS.



KEY PLAN

GRAPHIC SCALE

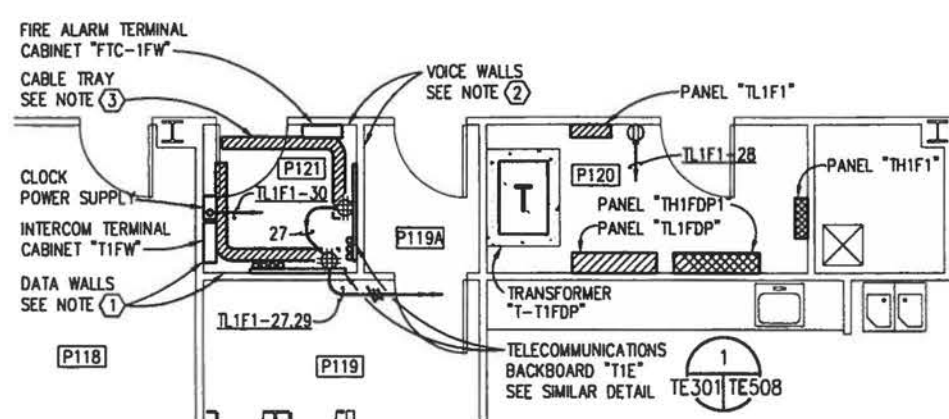
1/8" = 1'-0"



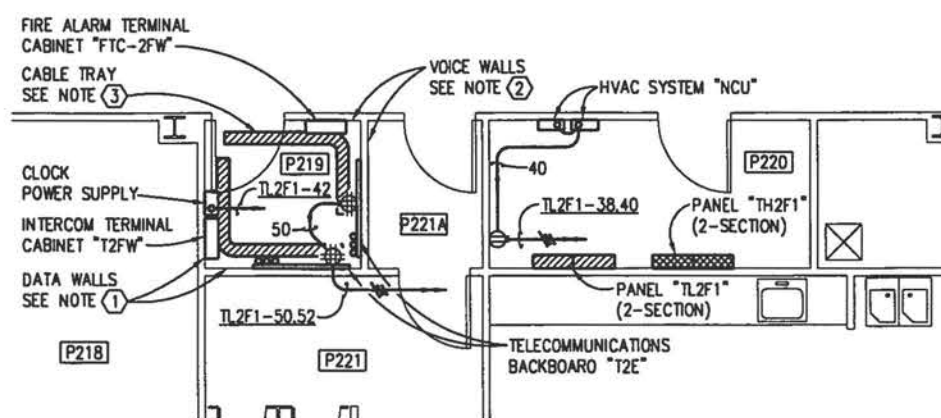
IF SHEET IS LESS THAN (22"x34") IT IS A REDUCED PRINT, SCALE REDUCED ACCORDINGLY.

TRAINING FACILITY

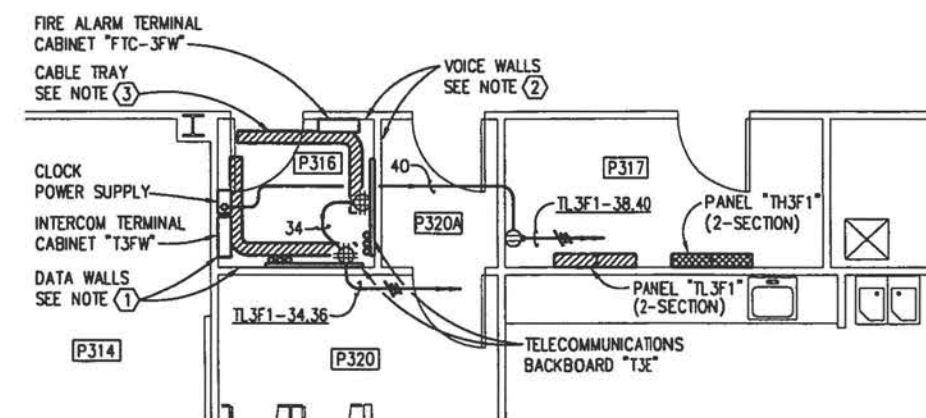
REVISIONS	DATE	APPROVED	BY	DATE	APPROVED	BY
1	7/26/96	CLW	K. BEAVERS	7/26/96	CLW	K. BEAVERS
2						
3						
4						
5						
6						
7						
8						
9						
10						
11						
12						
13						
14						
15						
16						
17						
18						
19						
20						
21						
22						
23						
24						
25						
26						
27						
28						
29						
30						
31						
32						
33						
34						
35						
36						
37						
38						
39						
40						
41						
42						
43						
44						
45						
46						
47						
48						
49						
50						
51						
52						
53						
54						
55						
56						
57						
58						
59						
60						
61						
62						
63						
64						
65						
66						
67						
68						
69						
70						
71						
72						
73						
74						
75						
76						
77						
78						
79						
80						
81						
82						
83						
84						
85						
86						
87						
88						
89						
90						
91						
92						
93						
94						
95						
96						
97						
98						
99						
100						



FIRST FLOOR



SECOND FLOOR

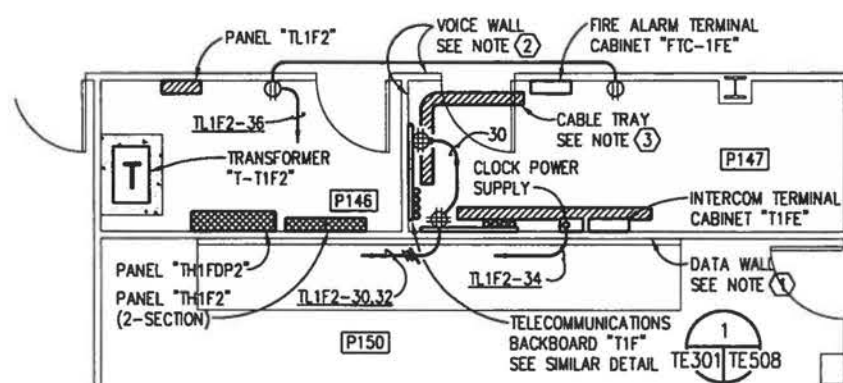


THIRD FLOOR

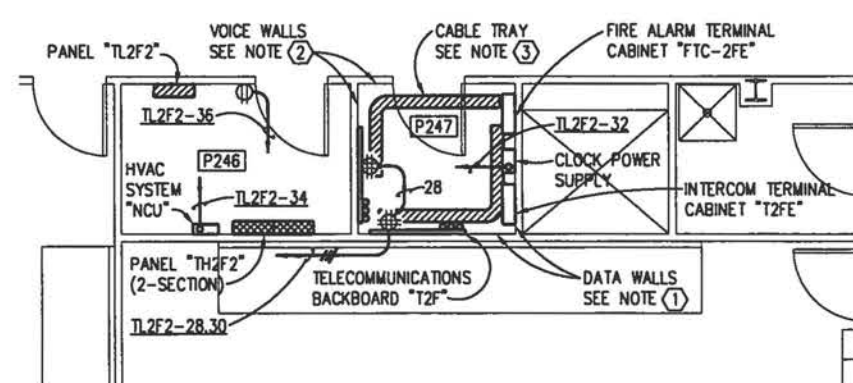
AREA "F" WEST ENLARGED EQUIPMENT ROOMS - ELECTRICAL

SCALE: $1/4" = 1' - 0"$

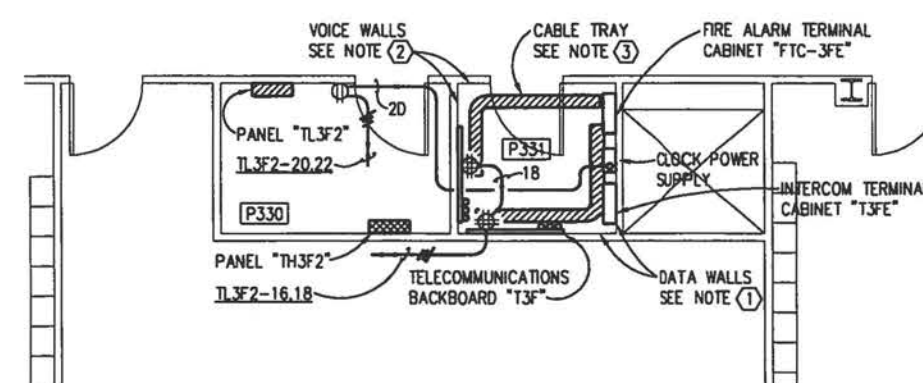
TE207 | TE303



FIRST FLOOR



SECOND FLOOR

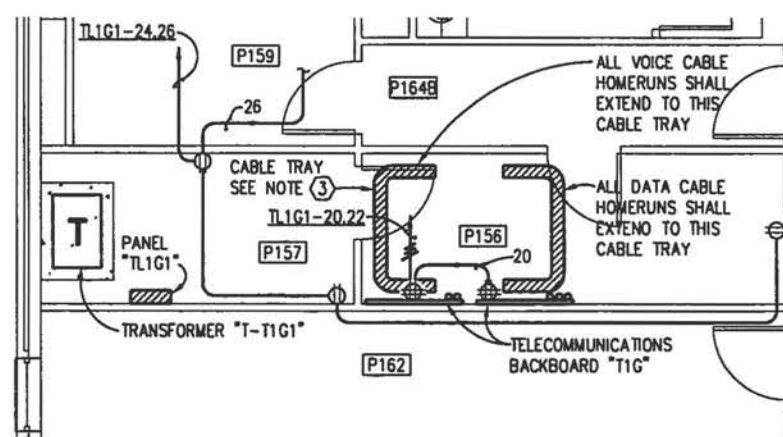


THIRD FLOOR

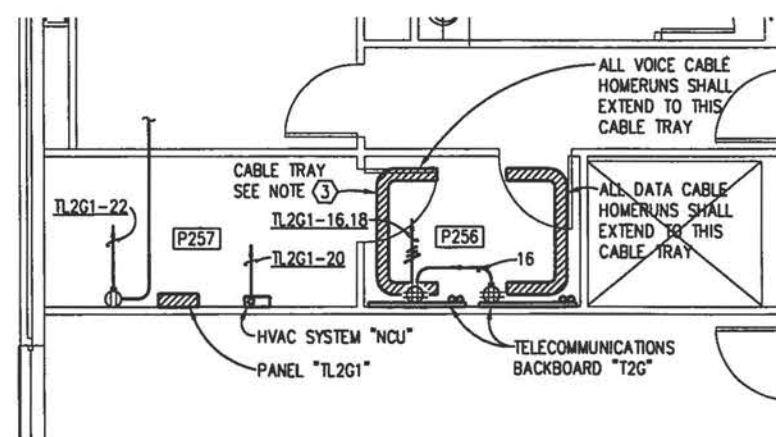
AREA "F" EAST ENLARGED EQUIPMENT ROOMS - ELECTRICAL

SCALE: $1/4" = 1' - 0"$

TE207 TE303



FIRST FLOOR



SECOND FLOOR

AREA "G" ENLARGED EQUIPMENT ROOMS - ELECTRICAL

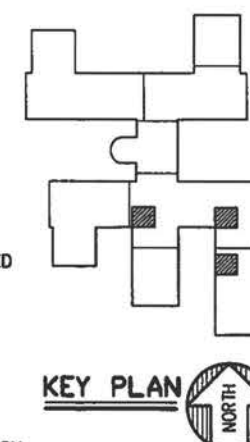
SCALE: 1/4"=1'-0"

TE208 TE303



NOTES

- ① ALL DATA CONDUIT HOMERUNS SHALL PENETRATE THE INDICATED DATA WALLS AND TERMINATE.
- ② ALL VOICE CONDUIT HOMERUNS SHALL PENETRATE THE INDICATED VOICE WALLS AND TERMINATE.
- ③ PROVIDE A 6" WIDE, 3" HIGH, ALUMINUM LADDER TYPE CABLE TRAY WITH RUNGS ON 6" CENTERS. FURNISH CABLE TRAY COMPLETE WITH ALL REQUIRED FITTINGS AND HARDWARE FOR ARRANGEMENT AS SHOWN ON PLAN. SUPPORT CABLE TRAY FROM WALL WITH BOTTOM 9'-4" ABOVE FLOOR.



KEY PLAN

GRAPHIC SCALE

$$1/4'' = 1'-0''$$

TRAINING FACILITY

IF SHEET IS LESS THAN (22"x34") IT IS A REDUCED PRINT, SCALE REDUCED ACCORDINGLY.

PANEL "TL2F1" 120/208 VOLT, 3 PHASE, 4 WIRE, 225 AMP MAIN LUGS ONLY, SURFACE MOUNTED. (2-SECTION) ALL BREAKERS SHALL HAVE A MINIMUM INTERRUPTING CAPACITY OF 10,000 RMS SYMMETRICAL AMPERES.									
CKT. NO.	POLE	TRIP	LOAD KVA	SERVES	CKT. NO.	POLE	TRIP	LOAD KVA	SERVES
1	1	20	1.08	REC RMS P203,P206	2	1	20	1.08	REC RMS P200,P202
3	1	20	0.72	REC RMS P206,P207	4	1	20	1.26	REC RMS P200
5	1	20	1.26	REC RMS P205,P206,P207	6	1	20	1.26	REC RMS P202,P203
7	1	20	0.72	REC RMS P212	8	1	20	1.08	REC RMS P203A,P213,P214
9	1	20	1.08	REC RMS P202,P203	10	1	20	1.26	REC RMS P212,P213
11	1	20	1.26	REC RMS P204	12	1	20	1.08	REC RMS P212,P213,P214
13	1	20	0.90	REC RM P215	14	1	20	1.08	REC RMS P230,P232,P235
15	1	20	1.26	REC RMS P03A,P211,P215	16	1	20	0.90	REC RMS P230,P232
17	1	20	0.90	REC RMS P211	18	1	20	1.08	REC RMS P235
19	1	20	1.26	REC RMS P228,P226	20	1	20	1.26	REC RMS P229,P227
21	1	20	1.26	REC RMS P228,P230	22	1	20	1.26	REC RMS P231,P229
23	1	20	0.90	REC RMS P230,P232	24	1	20	1.08	REC RMS P222,P231
25	1	20	1.08	REC RMS P226	26	1	20	1.08	REC RMS P217,P218
27	1	20	1.12	REC RMS P222,P227,P224 & LIGHTING	28	1	20	0.90	REC RMS P217
29	1	20	1.26	REC RMS P216,P221,P218	30	1	20	0.90	MICROWAVE P223
31	1	20	1.08	REC RMS P214,P216	32	1	20	0.50	EWV P223
33	1	20	0.60	VENDING P223	34	1	20	0.60	VENDING P223
35	1	20	0.60	VENDING P223	36	1	20	0.60	VENDING P223
37	1	20	0.36	REC RM P337	38	1	20	0.18	REC RM P220
39	1	20	0.60	AHU LIGHTING & EMCS RM P337	40	1	20	0.80	HVAC NETWORK CONTROL UNIT
41	1	20	0.70	EXH FAN EF-T-13	42	1	20	0.18	CLOCK POWER "T2FW"
43	1	20	----	SPARE	44	1	20	1.0	REFRIGERATOR RM P208
45	1	20	----	SPARE	46	1	20	1.0	COFFEE MAKER RM P208
47	1	20	----	SPARE	48	1	20	1.08	REC RMS P207,P208
49	1	20	----	SPARE	50	1	20	0.36	REC TEL BD "T2E" (VOICE)
51	3	50	10.08	SHREDDER RM P208	52	1	20	0.36	REC TEL BD "T2E" (DATA)
53	1	20	----	SPARE	54	1	20	----	SPARE
55	1	20	----	SPARE	56	1	20	----	SPARE
57	3	40	7.38	PANEL "TL2F3"	58	1	20	----	SPARE
59	1	20	----	SPARE	60	1	20	----	SPARE

TOTAL CONNECTED LOAD: 60.68 KVA

PANEL "TL2F3" 120/208 VOLT, 3 PHASE, 4 WIRE, 40 AMP MAIN BREAKER WITH 120 V. UNDERVOLTAGE RELEASE COIL, SURFACE MOUNTED. ALL BREAKERS SHALL HAVE A MINIMUM INTERRUPTING CAPACITY OF 10,000 RMS SYMMETRICAL AMPERES. PANEL U.L. LISTED SUITABLE FOR NON-LINEAR LOADS.									
CKT. NO.	POLE	TRIP	LOAD KVA	SERVES	CKT. NO.	POLE	TRIP	LOAD KVA	SERVES
1	1	20	0.72	RECEPTACLES WEST	2	1	20	0.72	RECEPTACLES EAST
3	1	20	0.72	RECEPTACLES WEST	4	1	20	0.54	RECEPTACLES EAST
5	1	20	0.54	RECEPTACLES WEST	6	1	20	0.54	RECEPTACLES EAST
7	1	20	0.54	FLOOR RECEPTACLES WEST	8	1	20	0.54	FLOOR RECEPTACLES EAST
9	1	20	0.72	RECEPTACLES SOUTH	10	1	20	0.72	RECEPTACLES NORTH
11	1	20	0.54	RECEPTACLES SOUTH	12	1	20	----	SPARE
13	1	20	0.54	RECEPTACLES SOUTH	14	1	20	----	SPARE
15	1	20	----	SPARE	16	1	20	----	SPARE

TOTAL CONNECTED LOAD: 7.38 KVA

PANEL "TH3F1" 277/480 VOLT, 3 PHASE, 4 WIRE, 400 AMP MAIN LUGS ONLY, SURFACE MOUNTED. (2-SECTION) ALL BREAKERS SHALL HAVE A MINIMUM INTERRUPTING CAPACITY OF 18,000 RMS SYMMETRICAL AMPERES.									
CKT. NO.	POLE	TRIP	LOAD KVA	SERVES	CKT. NO.	POLE	TRIP	LOAD KVA	SERVES
1	1	20	2.53	FTU 11/36	2	1	20	2.53	FTU 11/34
3	1	20	3.03	FTU 11/35	4	1	20	2.53	FTU 11/33
5	1	20	3.53	FTU 11/31	6	1	20	2.53	FTU 11/32
7	1	20	2.53	FTU 11/39	8	1	20	1.64	FTU 11/41
9	1	20	2.53	FTU 11/38	10	1	20	0.63	FTU 11/44
11	1	20	1.75	FTU 11/37	12	1	20	3.03	FTU 11/40
13	1	20	1.14	FTU 11/42	14	1	20	2.66	FTU 13/37 AND VAV 11/7
15	1	20	1.75	FTU 11/43	16	1	20	1.25	FTU 13/38
17	1	20	1.69	FTU 11/44, VAV 11/8 AND 11/9	18	1	20	3.03	FTU 13/36
19	1	20	2.03	FTU 13/33	20	1	20	----	SPARE
21	1	20	3.03	FTU 13/32	22	1	20	----	SPARE
23	1	20	----	SPARE	24	1	20	----	SPARE
25	1	20	----	SPARE	26	1	20	3.32	LTC RMS P307,P313,P328,P328A
27	1	20	----	SPARE	28	1	20	2.80	LTC RMS P321,P322,P324,P326
29	1	20	4.13	NOTE 1	30	1	20	3.46	LTC RMS P305,P307,P309,P311
31	1	20	3.50	LTC RMS P306,P308,P310,P312,P314A	32	1	20	0.84	ATTIC LIGHTING
33	1	20	3.98	LTC RMS P300,P301,P302,P303	34	1	20	3.50	UH-T2 RM P401
35	1	20	----	SPARE	36	1	20	----	SPARE
37	1	20	----	SPARE	38	1	20	----	SPARE
39	1	20	----	SPARE	40	1	20	----	SPARE
41	1	20	----	SPARE	42	1	20	----	SPARE
43	1	20	----	SPARE	44	1	20	----	SPARE
45	1	20	----	SPARE	46	3	20	9.14	AHU-T12
47	1	20	----	SPARE	48	1	20	----	SPARE
49	1	20	----	SPARE	50	1	20	----	SPARE
51	3	20	1.16	HW-T6	52	3	20	6.32	EF-T6
53	1	20	----	SPARE	54	1	20	----	SPARE
55	1	20	----	SPARE	56	1	20	----	SPARE
57	3	125	54.0	AHU-T11	58	3	100	60.0	EDH-T6
59	1	20	----	SPARE	60	1	20	----	SPARE

TOTAL CONNECTED LOAD: 201.52 KVA
1. LTC RMS P316,P317,P318,P319,P320,P321,P322,P323,P325

PANEL INDEX	
TL2F1	TH3F1
TL2F3	

DEPARTMENT OF THE NAVY SOUTHERN DIVISION CHARLESTON, S.C. S STATION JPTC TRAINING COMPLEX PANEL SCHEDULES DATE 5-21-96	REV. DESCRIPTION A GENERAL REVISIONS	PREP BY K. BEAVERS	DATE 7/28/96	APPROV [Signature]	VOA ASSOCIATES, INC. ARCHITECTURE & PLANNING 100 WEST BROAD STREET, SUITE 1000 CHARLESTON, S.C. 29401 TEL: 771-1111 FAX: 771-1111
	PROJECT PARTNER 21 MAY 1996				
	E. L. MELETS				
	[Signature]				

CODE LD NO.	80091
DRAWING NO.	06-95-0748
SPEC. NO.	06-95-0748
CONSTR. CONTR. NO.	N62467-95-C-0748
NAVFAC DRAWING NO.	5321379
SHEET 490 OF	

TRAINING FACILITY

TE615

IF SHEET IS LESS THAN (22"x34") IT IS A REDUCED PRINT, SCALE REDUCED ACCORDINGLY.

9512TE17 (PS14)

