

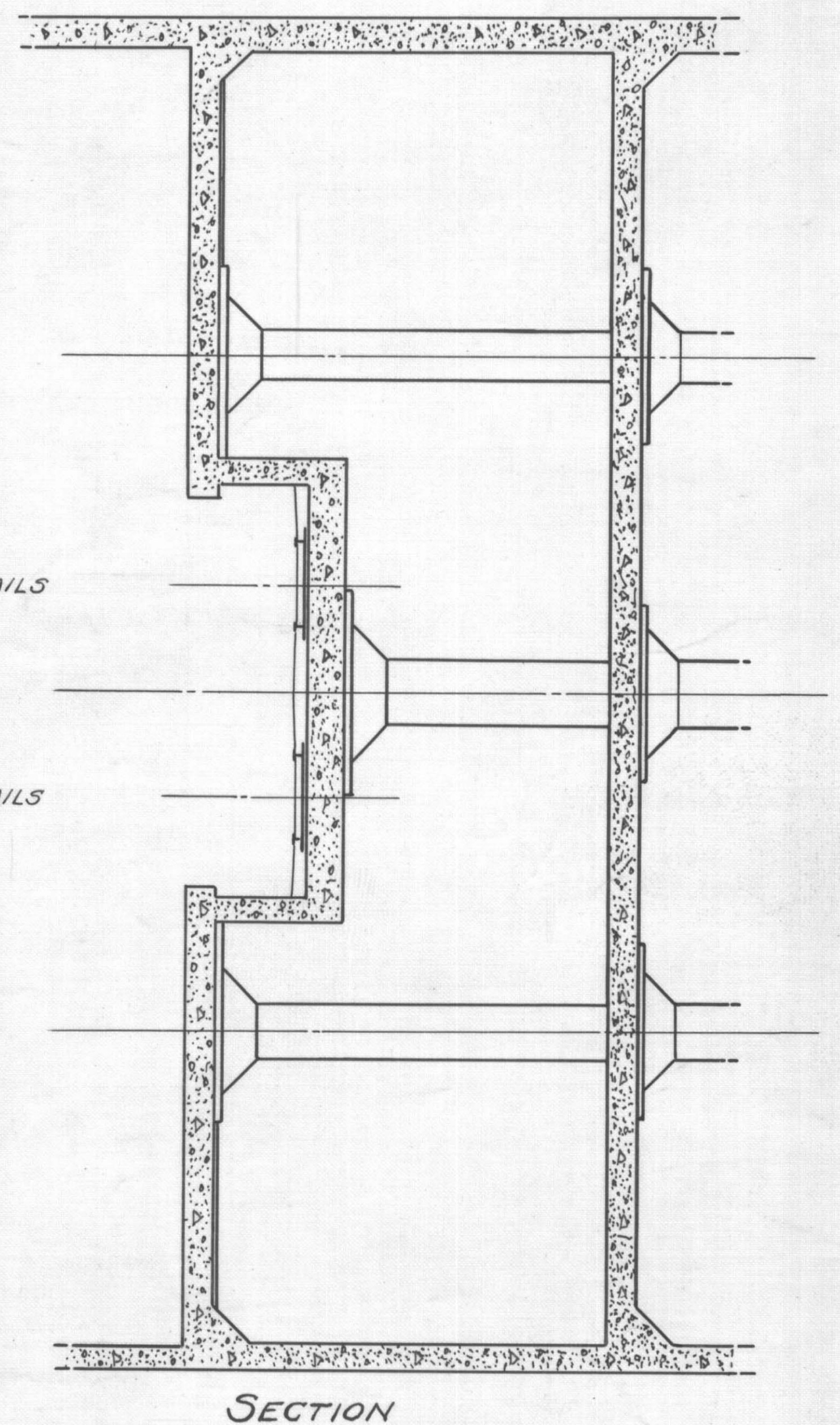
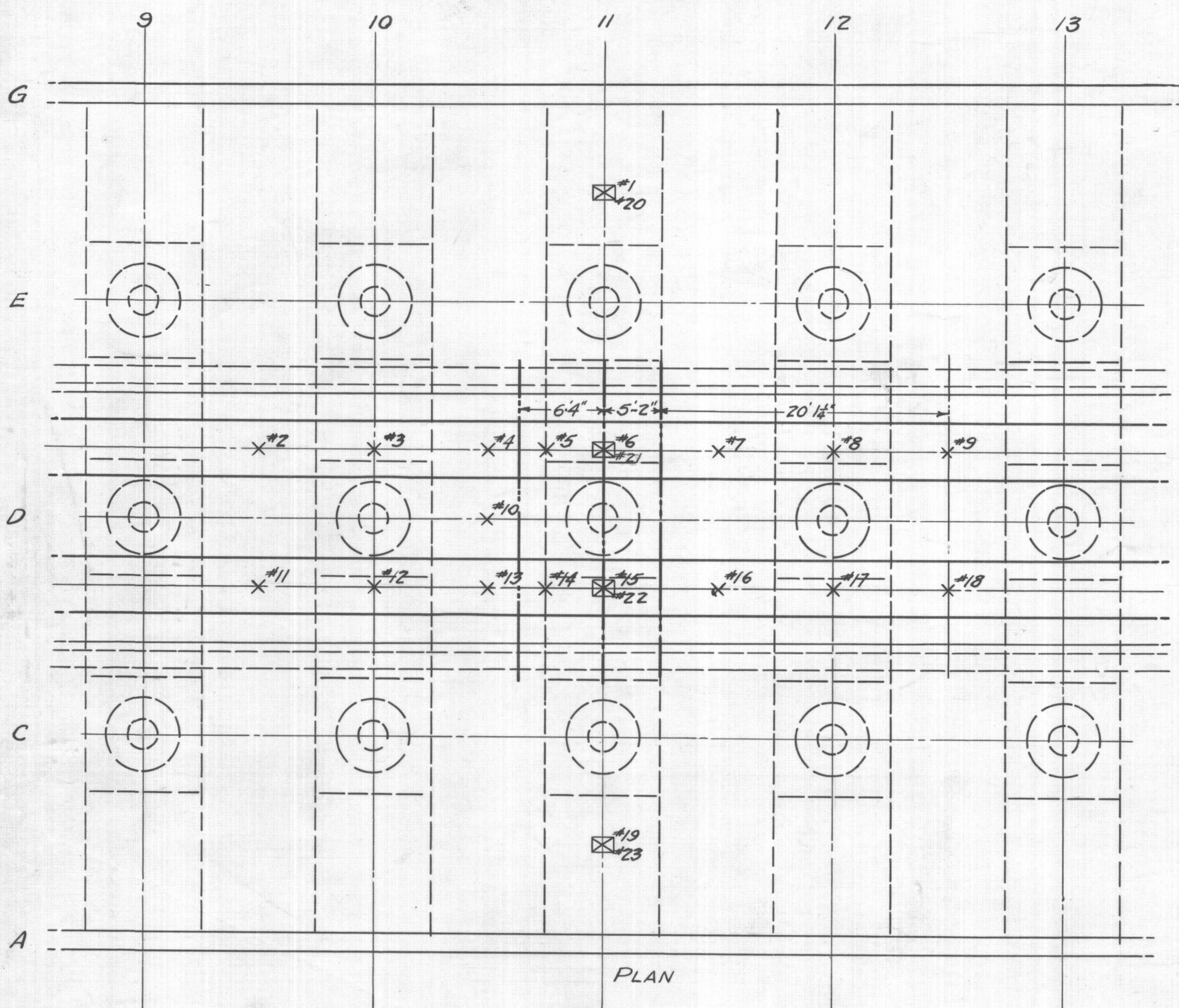
GOVERNMENT PRINTING OFFICE BUILDING #4
WASHINGTON D. C.

LOAD TEST 3RD FLOOR SLAB

STATION	No Load 3:00 P.M. 11/29		1 ST LOCOMOTIVE 7:05 A.M. 11/30		"		"		"		2 ND LOCOMOTIVE 7:00 P.M. 11/30		"		"		"		LOAD OFF 7:00 A.M. 12/1		LOAD OFF 10:15 A.M. 12/2	
	ROD	DEF.	ROD	DEF.	ROD	DEF.	ROD	DEF.	ROD	DEF.	ROD	DEF.	ROD	DEF.	ROD	DEF.	ROD	DEF.	ROD	DEF.	ROD	DEF.
B.M. #1	0.759		0.759		0.757		0.759		0.758		0.760		0.759		0.760		0.760		0.760		0.760	
#1 (On 3 RD FLOOR)	12.668		12.668	0.000	12.667	-0.003	12.668	0.000	12.668	-0.001	12.667	0.000	12.668	0.000	12.667	0.000	12.667	0.000	12.667	0.000	12.667	0.000
#2 "	8.592		8.588	-0.004	8.591	-0.003	8.590	-0.002	8.593	0.000	8.594	+0.003	8.594	+0.002	8.595	+0.004	8.593	+0.002	8.594	+0.003	8.595	+0.004
#3 "	8.258		8.253	-0.005	8.255	-0.003	8.256	-0.002	8.258	-0.001	8.256	-0.001	8.259	+0.001	8.260	+0.003	8.260	+0.003	8.257	0.000	8.257	0.000
#4 "	8.575		8.567	-0.008	8.569	-0.008	8.570	-0.005	8.569	-0.007	8.571	-0.003	8.572	-0.003	8.570	-0.004	8.571	-0.003	8.573	-0.001	8.574	0.000
#5 "	8.273		8.265	-0.008	8.267	-0.008	8.267	-0.006	8.267	-0.007	8.268	-0.004	8.268	-0.005	8.267	-0.005	8.268	-0.004	8.270	-0.002	8.270	-0.002
#6 "	8.270		8.262	-0.008	8.262	-0.010	8.263	-0.007	8.263	-0.008	8.265	-0.004	8.264	-0.006	8.264	-0.005	8.263	-0.006	8.265	-0.004	8.267	-0.002
#7 "	8.597		8.588	-0.009	8.592	-0.007	8.591	-0.006	8.593	-0.005	8.593	-0.003	8.590	-0.007	8.590	-0.006	8.591	-0.005	8.595	-0.001	8.595	-0.001
#8 "	8.270		8.265	-0.005	8.268	-0.004	8.266	-0.004	8.267	-0.004	8.267	-0.002	8.267	-0.003	8.267	-0.002	8.268	-0.001	8.270	+0.001	8.269	0.000
#9 "	8.602		8.595	-0.007	8.598	-0.006	8.597	-0.005	8.597	-0.006	8.599	-0.002	8.599	-0.003	8.600	-0.001	8.599	-0.002	8.604	+0.003	8.603	+0.002
#10 "	8.589		8.583	-0.006	8.586	-0.005	8.587	-0.002	8.587	-0.003	8.586	-0.002	8.586	-0.003	8.586	-0.002	8.587	-0.001	8.587	-0.001	8.587	-0.001
#11 "	8.580		8.578	-0.002	8.580	-0.002	8.579	-0.001	8.580	-0.001	8.579	-0.000	8.580	0.000	8.579	0.000	8.580	+0.001	8.580	+0.001	8.579	0.000
#12 "	8.249		8.247	-0.002	8.249	-0.002	8.248	-0.001	8.250	0.000	8.246	-0.002	8.246	-0.003	8.247	-0.001	8.248	0.000	8.246	-0.002	8.247	-0.001
#13 "	8.555		8.552	-0.003	8.554	-0.003	8.554	-0.001	8.556	0.000	8.553	-0.001	8.552	-0.003	8.553	-0.001	8.553	-0.001	8.555	+0.001	8.555	+0.001
#14 "	8.276		8.270	-0.006	8.273	-0.005	8.273	-0.003	8.274	-0.003	8.270	-0.005	8.268	-0.008	8.270	-0.005	8.272	-0.003	8.273	-0.002	8.273	-0.002
#15 "	8.280		8.278	-0.002	8.278	-0.004	8.280	0.000	8.282	+0.001	8.275	-0.004	8.275	-0.005	8.276	-0.003	8.276	-0.003	8.280	+0.001	8.277	-0.002
#16 "	8.591		8.590	-0.001	8.592	-0.001	8.590	-0.001	8.591	-0.001	8.590	0.000	8.587	-0.004	8.587	-0.003	8.590	0.000	8.592	+0.002	8.594	+0.004
#17 "	8.268		8.265	-0.003	8.266	-0.004	8.264	-0.004	8.264	-0.005	8.264	-0.003	8.263	-0.005	8.264	-0.003	8.263	-0.004	8.266	-0.001	8.266	-0.001
#18 "	8.595		8.595	0.000	8.599	+0.002	8.597	+0.002	8.598	+0.002	8.599	+0.005	8.596	+0.001	8.595	+0.001	8.595	+0.001	8.599	+0.005	8.597	+0.003
#20 (On 2 ND FLOOR)	5.063		5.064	-0.001	5.062	-0.001	5.062	+0.001	5.064	-0.002	5.064	0.000	5.062	+0.001	5.062	-0.002	5.065	-0.001	5.064	0.000	5.065	-0.001
21 "	5.109		5.116	-0.007	5.115	-0.008	5.115	-0.006	5.114	-0.006	5.115	-0.005	5.116	-0.007	5.115	-0.005	5.115	-0.005	5.115	-0.005	5.115	-0.005
22 "	5.111		5.111	0.000	5.110	-0.001	5.109	+0.002	5.110	0.000	5.110	+0.002	5.112	-0.001	5.111	+0.001	5.110	+0.002	5.108	+0.004	5.110	+0.002
B.M. #2	0.390																					
#19 (On 3 RD FLOOR)	6.650		STATIONS #19 & #23 OMITTED BY DIRECTION OF MR. EMSWILER OF THE STRUCTURAL DIVISION 11/30/37																			
#23 (On 2 ND FLOOR)	5.110																					

DEFLECTION OF COLUMNS

COLUMN #11C 12' above floor	2 $\frac{13}{64}$ "	0	2 $\frac{51}{64}$ "	5 $\frac{1}{2}$ "	2 $\frac{50}{64}$ "	5 $\frac{1}{4}$ "	2 $\frac{49}{64}$ "	0	2 $\frac{50}{64}$ "	5 $\frac{1}{4}$ "	2 $\frac{50}{64}$ "	5 $\frac{1}{4}$ "	2 $\frac{50}{64}$ "	5 $\frac{1}{4}$ "	2 $\frac{49}{64}$ "	0	2 $\frac{49}{64}$ "	0	2 $\frac{3}{4}$ "	N. 6 $\frac{1}{4}$ "	2 $\frac{49}{64}$ "	0
COLUMN #11D 8' above floor	2 $\frac{3}{4}$ "	0	2 $\frac{51}{64}$ "	5 $\frac{3}{8}$ "	2 $\frac{50}{64}$ "	5 $\frac{3}{16}$ "	2 $\frac{50}{64}$ "	5 $\frac{1}{2}$ "	2 $\frac{50}{64}$ "	5 $\frac{3}{8}$ "	2 $\frac{49}{64}$ "	5 $\frac{1}{4}$ "	2 $\frac{49}{64}$ "	5 $\frac{1}{4}$ "	2 $\frac{49}{64}$ "	5 $\frac{3}{8}$ "	2 $\frac{49}{64}$ "	5 $\frac{3}{8}$ "	2 $\frac{49}{64}$ "	S. 6 $\frac{1}{4}$ "	2 $\frac{49}{64}$ "	5 $\frac{1}{4}$ "
COLUMN #11E 12' above floor	3 $\frac{3}{8}$ "	0	3 $\frac{53}{64}$ "	N. 6 $\frac{1}{4}$ "	3 $\frac{52}{64}$ "	N. 6 $\frac{1}{4}$ "	3 $\frac{5}{8}$ "	0	3 $\frac{50}{64}$ "	0	3 $\frac{50}{64}$ "	0	3 $\frac{5}{8}$ "	0	3 $\frac{5}{8}$ "	0	3 $\frac{5}{8}$ "	0	3 $\frac{5}{8}$ "	0	3 $\frac{5}{8}$ "	0



NOTE: x DENOTES POINTS IN CEILING (*1% #19)
 " " " FLOOR (*20% #23)
 NO SCALE SEE DRWG #403
 --- DENOTES LOCOMOTIVE DRIVERS
 CLASS B63A LOCOMOTIVES & TENDERS

DRAWN BY *Livingston La. Johnson*
 CONSTRUCTION ENGINEER
 APPROVED BY *William A. Miller*
 CONSTRUCTION ENGINEER

BLDG #4 3RD FL
 FILE #22 SH. 40

2659
 SH. 1 OF 1 4-75