

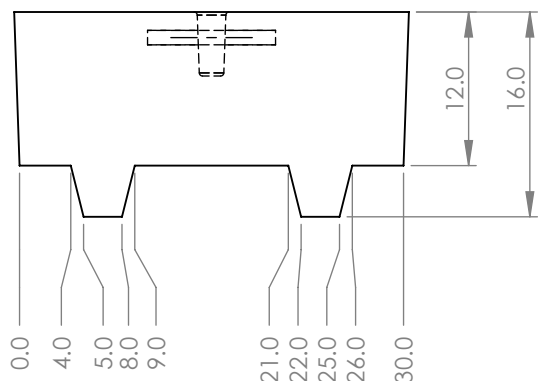
4

3

2

1

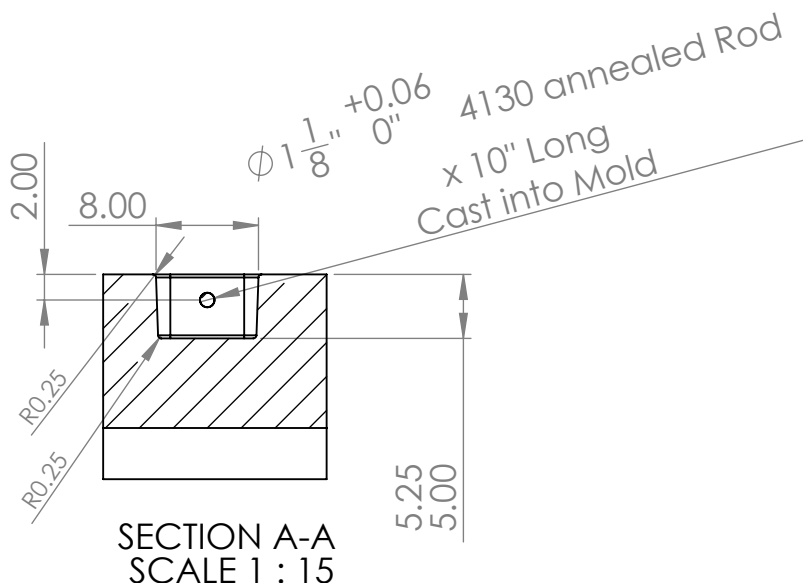
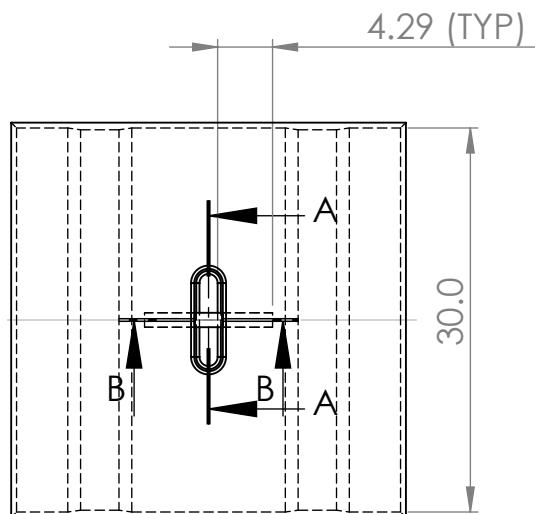
D

**DRAWING VIEW REVISIONS :**

- A. ENGINEER: NLS DATE: 11/15 ZONE: ALL
DESCRIPTION: Eliminate surface finish spec, loosen .XX tolerances frm 0.02, Add Rod spec, change rod frm 1045 steel.
- B. ENGINEER: NLS DATE: 01/16 ZONE: ALL
DESCRIPTION: Add in Draft and Radius Spec.
- C. ENGINEER: NLS DATE: 10/17 ZONE: ALL
DESCRIPTION: Change Pocket frm 4" width and 4" depth, for increased factor of safety.

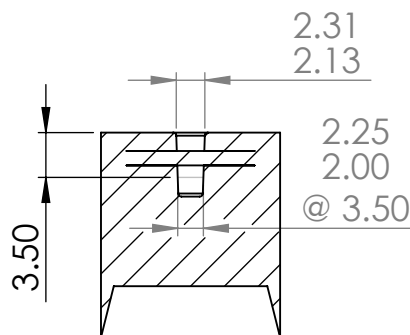
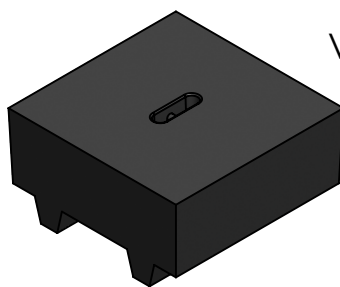
D

C

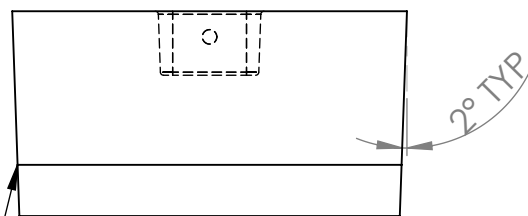


C

B

SECTION B-B
SCALE 1 : 15

Vendor can add in draft as shown

Vendor may add a
0.50 radius on
all external edgesPOCKET MUST BE ABLE TO DIP
A 3/4" SAFETY ANCHOR SHACKLE

F.O.S. > 6

B

MATERIAL: CAST IRON ASTM A48, CL30 OR EQUIVALENT

APPROXIMATE WEIGHT: 3000 +/- 100lbs

A

NO MODIFICATION OF SPECIFIED
DIMENSIONS OR MATERIALS IS
ALLOWED UNLESS APPROVED
BY NOAA ENGINEERS.

Surface Finish: As Cast

DO NOT SCALE DRAWING

DIMENSIONS ARE IN INCHES

TOLERANCES ARE:

ANGLES $\pm 1^\circ$ FRACTIONS $\pm 1/8$

DECIMALS

.X ± 0.25 .XX ± 0.13 .XXX ± 0.002

CAD FILE

{ENGR}{Anchor}{3000# NOAA CAST ANCHOR WITH ROD}{3}

THIRD ANGLE PROJECTION



DRAWN

MHO

DATE

07/14

CHECKED

NLS

DATE

11/15

NOAA-PMEL
Engineering Division7600 Sand Point Wy NE
Seattle, WA 98115
206-526-6800

PROJECT

Engineering Cast Anchor

SHEET NAME

NOAA CAST ANCHOR WITH ROD

PLOT DATE

12/1/2021

SHEET

1 OF 1

A

4

3

2

1