

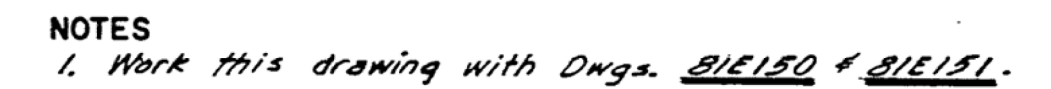
[illegible]

DRAWN BY: D. MEIER 1616 CAPITOL AVE OMAHA, NE 68102	SOLICITATION NO: W9128F28B0001	CHECKED BY:	SUBMITTER BY:	FILE NUMBER:	FILENAME:	ANSI.D	BBA1S1110.dgn
	CONTRACT NO:				SIZE:		

STRUCTURAL INFORMATION DRAWING  
UNWATERING SUMP CONCRETE PLACEMENT DETAILS

SHEET ID

1110



## EXISTING CONSTRUCTION

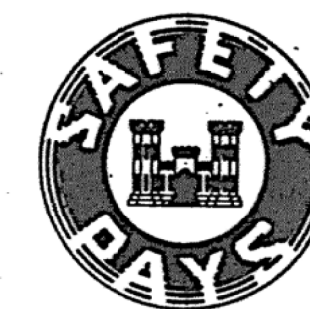
INFORMATION SHOWN ON THIS DRAWING DEPICTS  
EXISTING CONSTRUCTION FOR GENERAL REFERENCE,  
EXCEPT FOR LOCATION REFERENCES, SECTION  
CUTS, PHOTO REFERENCE POINTS, AND NOTES  
RELATING TO NEW WORK. ITEMS DEPICTED ON THIS  
SHEET ARE NOT TO SCALE.

THIS DRAWING HAS BEEN REDUCED TO  
ONE HALF THE ORIGINAL SCALE

**GRAPHIC SCALES**

**SCALE:  $\frac{1}{8}$  INCH = 1 FOOT**

**SCALE:  $\frac{3}{16}$  INCH = 1 FOOT**



THIS PLAN ACCOMPANIES CONTRACT NO.  
DA-25-066-eng.-61-332, MODIFICATION NO.9

[illegible]

Note: Do not scale this drawing. Follow dimensions.





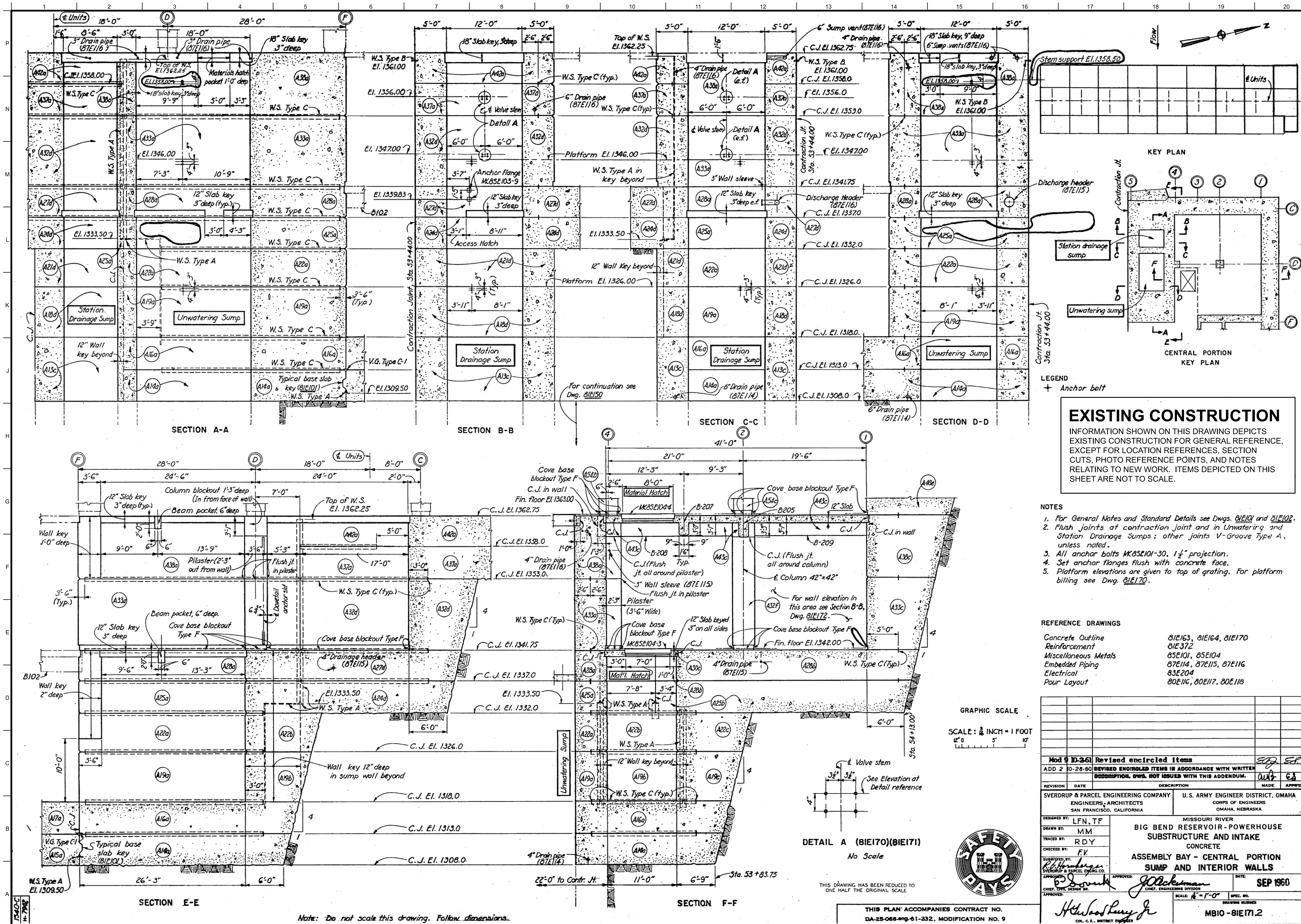




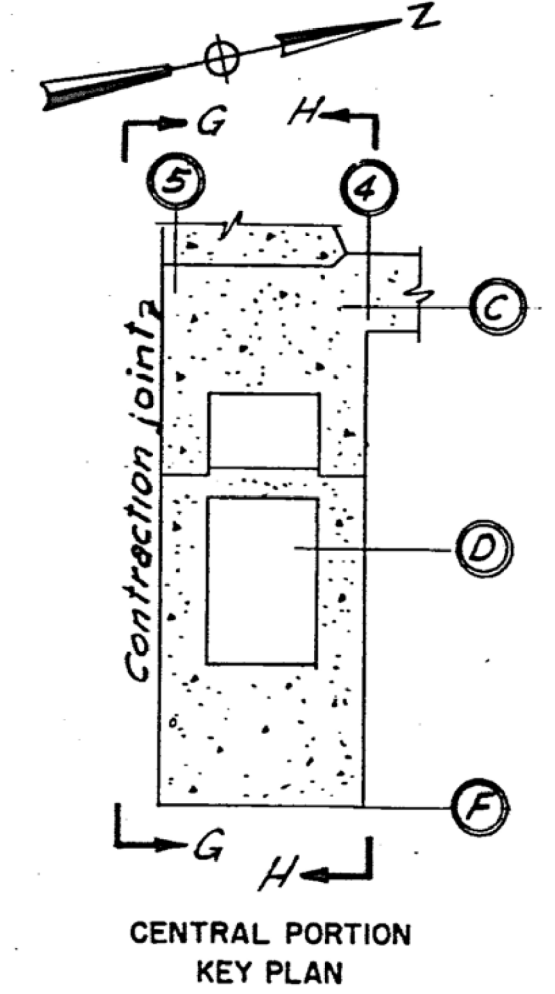
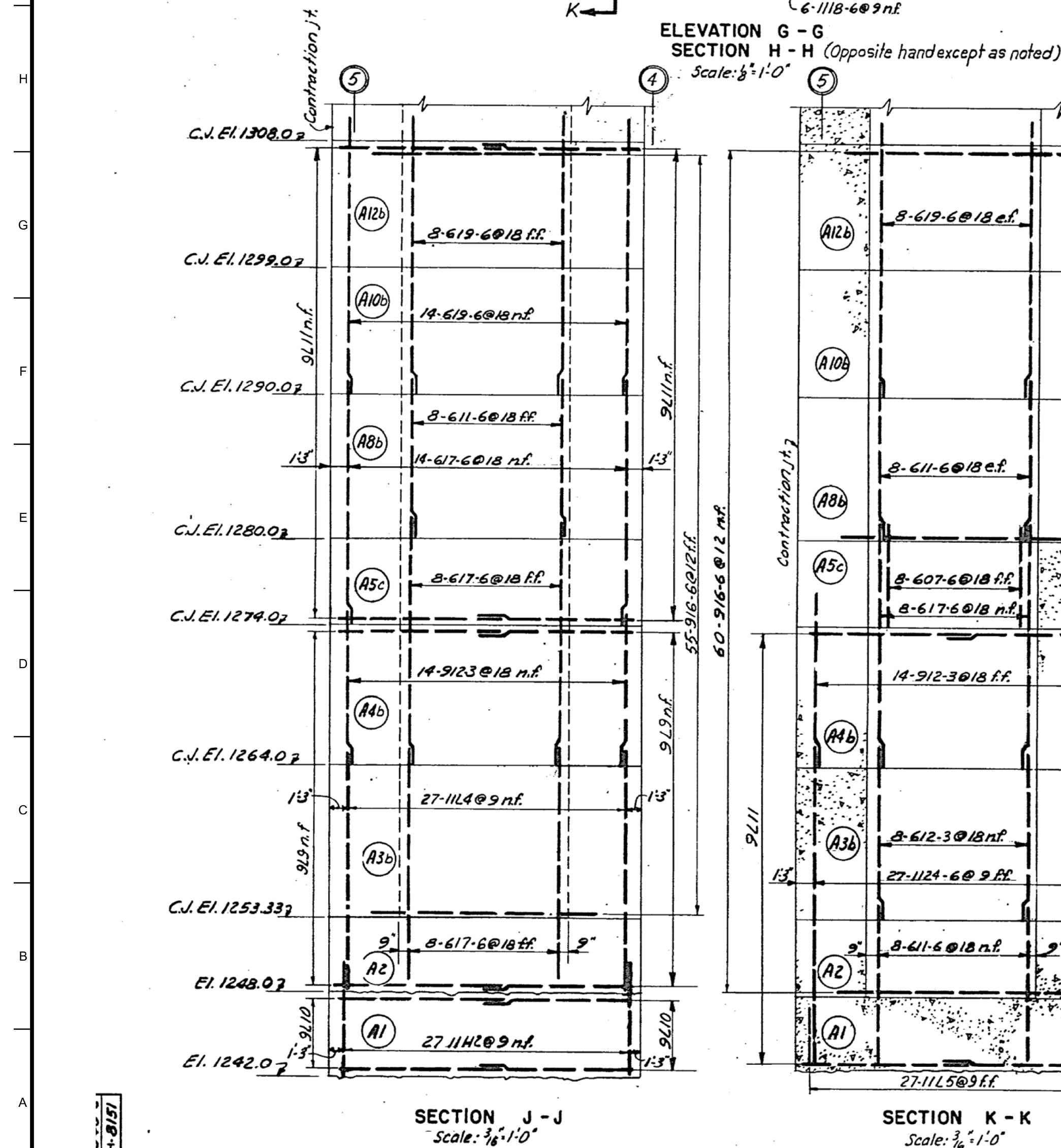






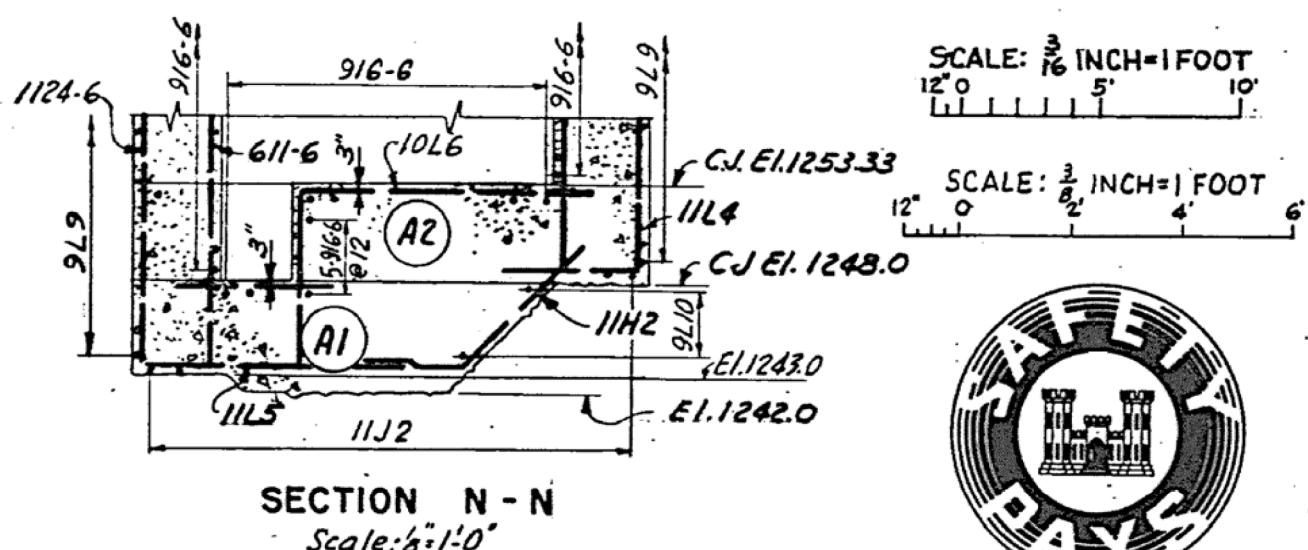







# EXISTING CONSTRUCTION

INFORMATION SHOWN ON THIS DRAWING DEPICTS EXISTING CONSTRUCTION FOR GENERAL REFERENCE, EXCEPT FOR LOCATION REFERENCES, SECTION CUTS, PHOTO REFERENCE POINTS, AND NOTES RELATING TO NEW WORK. ITEMS DEPICTED ON THIS SHEET ARE NOT TO SCALE.

[illegible]

Note: Do not scale this drawing. Follow dimensions.

THIS PLAN ACCOMPANIES CONTRACT NO.  
DA-25-066-eng.- , MODIFICATION NO.

 <b>US Army Corps of Engineers®</b>		<b>ISSUE DATE:</b> NOVEMBER 2022	
<b>DESIGNED BY:</b> D. MEIER		<b>SOLICITATION NO.:</b> W9128F23B0001	
<b>DRAWN BY:</b> D. MEIER		<b>CONTRACT NO.:</b>	
<b>CHECKED BY:</b>		<b>FILE NUMBER:</b>	
<b>S. DENNING</b>		<b>S. DENNING</b>	
<b>SUBMITTED BY:</b>		<b>DATE:</b>	
<b>SIZE:</b>		<b>MARK</b>	
<b>FILENAME:</b> BBA1SI115.dgn		<b>DESCRIPTION</b>	
<b>ANSI D</b>		<b>DATE</b>	

<b>U.S. ARMY CORPS OF ENGINEERS</b> OMAHA DISTRICT 1616 CAPITOL AVE OMAHA, NE 68102	<b>ISSUE DATE:</b> NOVEMBER 2022 <b>SOLICITATION NO.:</b> W9128F23B0001 <b>CONTRACT NO.:</b>  <b>FILE NUMBER:</b>  <b>S. DENNING</b> <b>SUBMITTED BY:</b>  <b>DATE:</b>  <b>MARK</b>  <b>DESCRIPTION</b>  <b>ANSI D</b> BBA1SI115.dgn
--	---

<b>U.S. ARMY CORPS OF ENGINEERS</b> OMAHA DISTRICT 1616 CAPITOL AVE OMAHA, NE 68102	<b>ISSUE DATE:</b> NOVEMBER 2022 <b>SOLICITATION NO.:</b> W9128F23B0001 <b>CONTRACT NO.:</b>  <b>FILE NUMBER:</b>  <b>S. DENNING</b> <b>SUBMITTED BY:</b>  <b>DATE:</b>  <b>MARK</b>  <b>DESCRIPTION</b>  <b>ANSI D</b> BBA1SI115.dgn
--	---

<b>U.S. ARMY CORPS OF ENGINEERS</b> OMAHA DISTRICT 1616 CAPITOL AVE OMAHA, NE 68102	<b>ISSUE DATE:</b> NOVEMBER 2022 <b>SOLICITATION NO.:</b> W9128F23B0001 <b>CONTRACT NO.:</b>  <b>FILE NUMBER:</b>  <b>S. DENNING</b> <b>SUBMITTED BY:</b>  <b>DATE:</b>  <b>MARK</b>  <b>DESCRIPTION</b>  <b>ANSI D</b> BBA1SI115.dgn
--	---

<b>U.S. ARMY CORPS OF ENGINEERS</b> OMAHA DISTRICT 1616 CAPITOL AVE OMAHA, NE 68102	<b>ISSUE DATE:</b> NOVEMBER 2022 <b>SOLICITATION NO.:</b> W9128F23B0001 <b>CONTRACT NO.:</b>  <b>FILE NUMBER:</b>  <b>S. DENNING</b> <b>SUBMITTED BY:</b>  <b>DATE:</b>  <b>MARK</b>  <b>DESCRIPTION</b>  <b>ANSI D</b> BBA1SI115.dgn
--	---

<b>U.S. ARMY CORPS OF ENGINEERS</b> OMAHA DISTRICT 1616 CAPITOL AVE OMAHA, NE 68102	<b>ISSUE DATE:</b> NOVEMBER 2022 <b>SOLICITATION NO.:</b> W9128F23B0001 <b>CONTRACT NO.:</b>  <b>FILE NUMBER:</b>  <b>S. DENNING</b> <b>SUBMITTED BY:</b>  <b>DATE:</b>  <b>MARK</b>  <b>DESCRIPTION</b>  <b>ANSI D</b> BBA1SI115.dgn
--	---

<b>U.S. ARMY CORPS OF ENGINEERS</b> OMAHA DISTRICT 1616 CAPITOL AVE OMAHA, NE 68102	<b>ISSUE DATE:</b> NOVEMBER 2022 <b>SOLICITATION NO.:</b> W9128F23B0001 <b>CONTRACT NO.:</b>  <b>FILE NUMBER:</b>  <b>S. DENNING</b> <b>SUBMITTED BY:</b>  <b>DATE:</b>  <b>MARK</b>  <b>DESCRIPTION</b>  <b>ANSI D</b> BBA1SI115.dgn
--	---

<b>U.S. ARMY CORPS OF ENGINEERS</b> OMAHA DISTRICT 1616 CAPITOL AVE OMAHA, NE 68102	<b>ISSUE DATE:</b> NOVEMBER 2022 <b>SOLICITATION NO.:</b> W9128F23B0001 <b>CONTRACT NO.:</b>  <b>FILE NUMBER:</b>  <b>S. DENNING</b> <b>SUBMITTED BY:</b>  <b>DATE:</b>  <b>MARK</b>  <b>DESCRIPTION</b>  <b>ANSI D</b> BBA1SI115.dgn
--	---

<b>U.S. ARMY CORPS OF ENGINEERS</b> OMAHA DISTRICT 1616 CAPITOL AVE OMAHA, NE 68102	<b>ISSUE DATE:</b> NOVEMBER 2022 <b>SOLICITATION NO.:</b> W9128F23B0001 <b>CONTRACT NO.:</b>  <b>FILE NUMBER:</b>  <b>S. DENNING</b> <b>SUBMITTED BY:</b>  <b>DATE:</b>  <b>MARK</b>  <b>DESCRIPTION</b>  <b>ANSI D</b> BBA1SI115.dgn
--	---

<b>U.S. ARMY CORPS OF ENGINEERS</b> OMAHA DISTRICT 1616 CAPITOL AVE OMAHA, NE 68102	<b>ISSUE DATE:</b> NOVEMBER 2022 <b>SOLICITATION NO.:</b> W9128F23B0001 <b>CONTRACT NO.:</b>  <b>FILE NUMBER:</b>  <b>S. DENNING</b> <b>SUBMITTED BY:</b>  <b>DATE:</b>  <b>MARK</b>  <b>DESCRIPTION</b>  <b>ANSI D</b> BBA1SI115.dgn
--	---

<b>U.S. ARMY CORPS OF ENGINEERS</b> OMAHA DISTRICT 1616 CAPITOL AVE OMAHA, NE 68102	<b>ISSUE DATE:</b> NOVEMBER 2022 <b>SOLICITATION NO.:</b> W9128F23B0001 <b>CONTRACT NO.:</b>  <b>FILE NUMBER:</b>  <b>S. DENNING</b> <b>SUBMITTED BY:</b>  <b>DATE:</b>  <b>MARK</b>  <b>DESCRIPTION</b>  <b>ANSI D</b> BBA1SI115.dgn
--	---

<b>U.S. ARMY CORPS OF ENGINEERS</b> OMAHA DISTRICT 1616 CAPITOL AVE OMAHA, NE 68102	<b>ISSUE DATE:</b> NOVEMBER 2022 <b>SOLICITATION NO.:</b> W9128F23B0001 <b>CONTRACT NO.:</b>  <b>FILE NUMBER:</b>  <b>S. DENNING</b> <b>SUBMITTED BY:</b>  <b>DATE:</b>  <b>MARK</b>  <b>DESCRIPTION</b>  <b>ANSI D</b> BBA1SI11
--	--

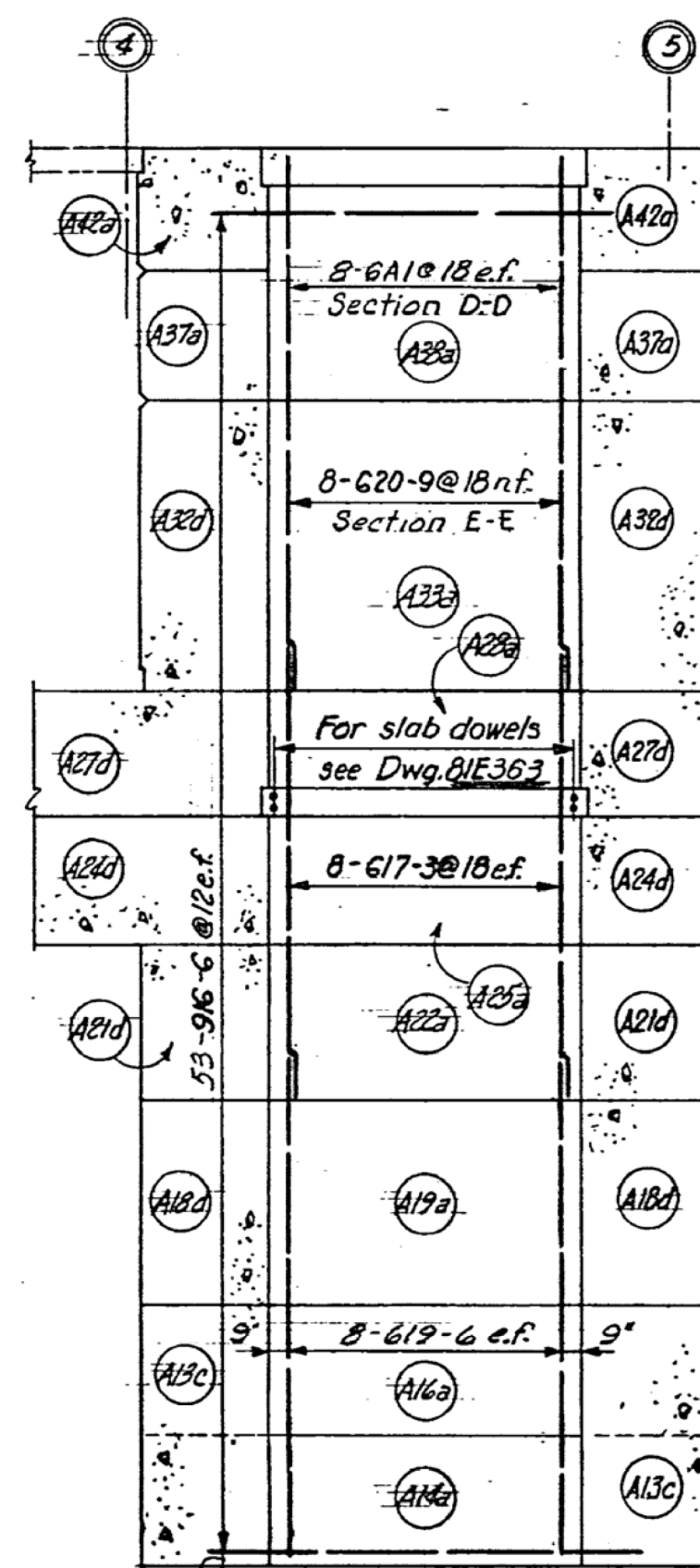
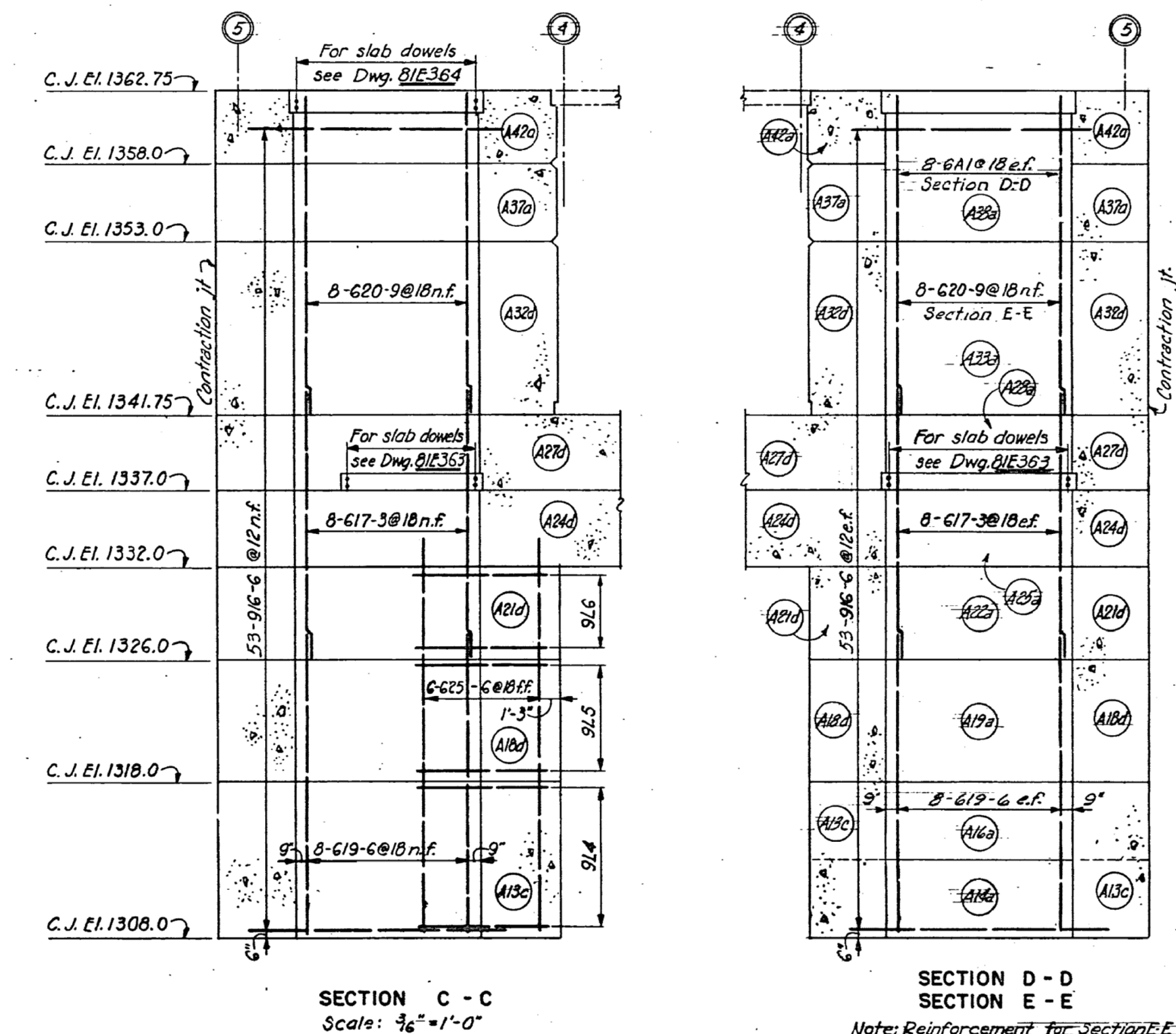
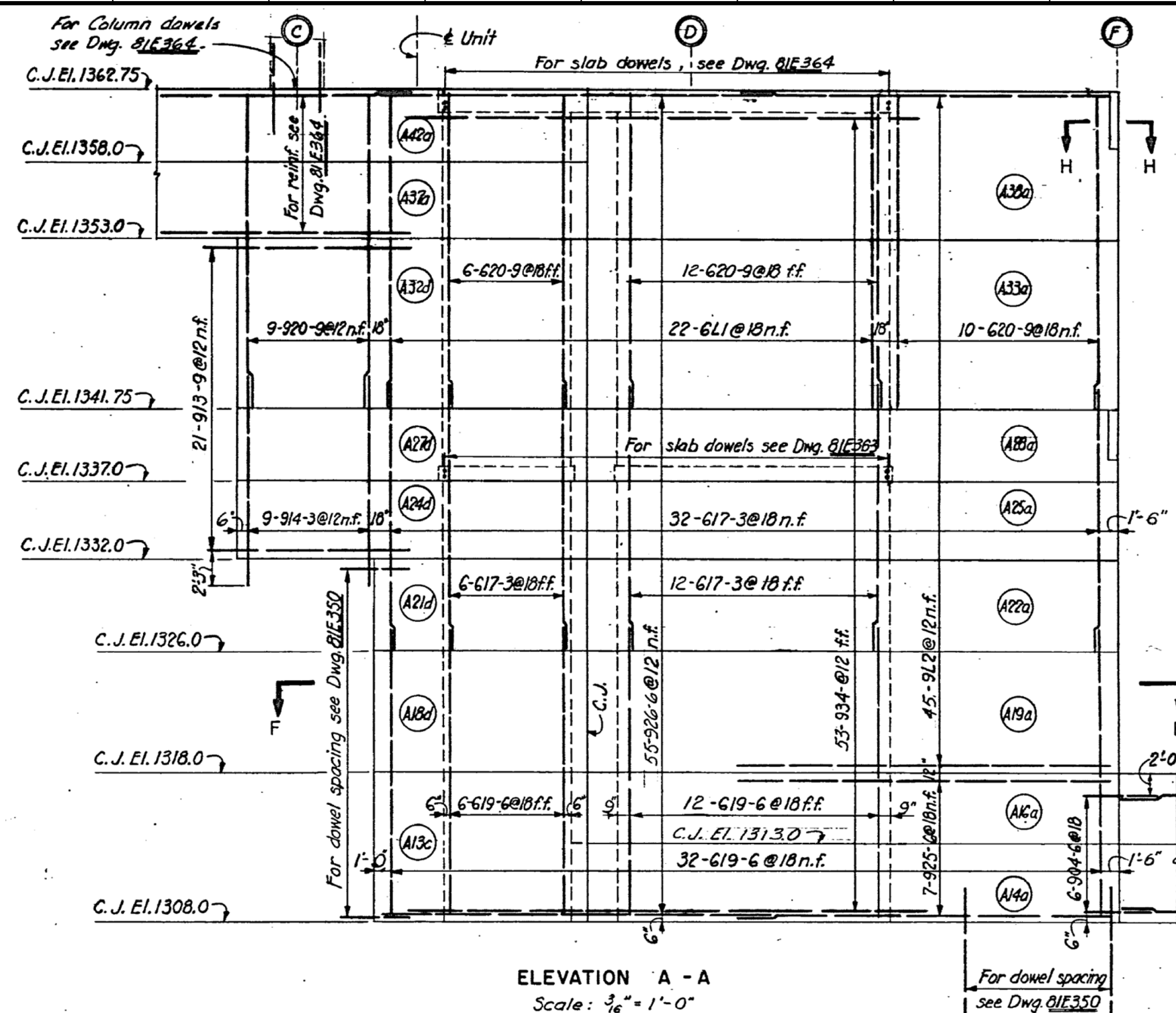




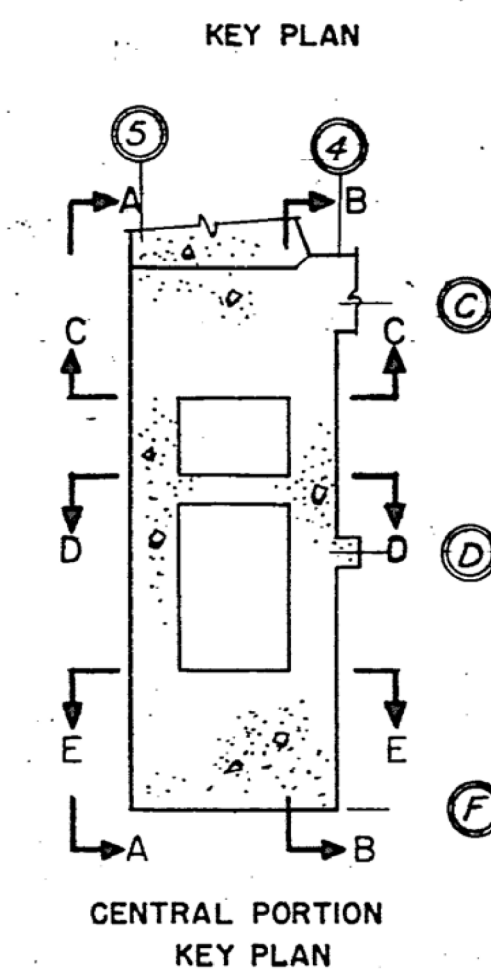
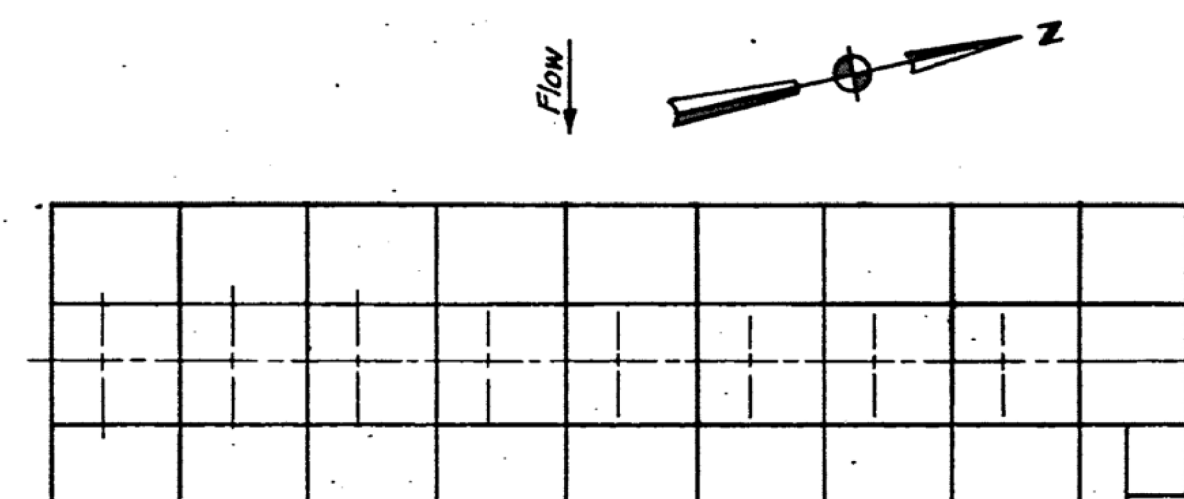
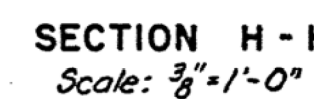
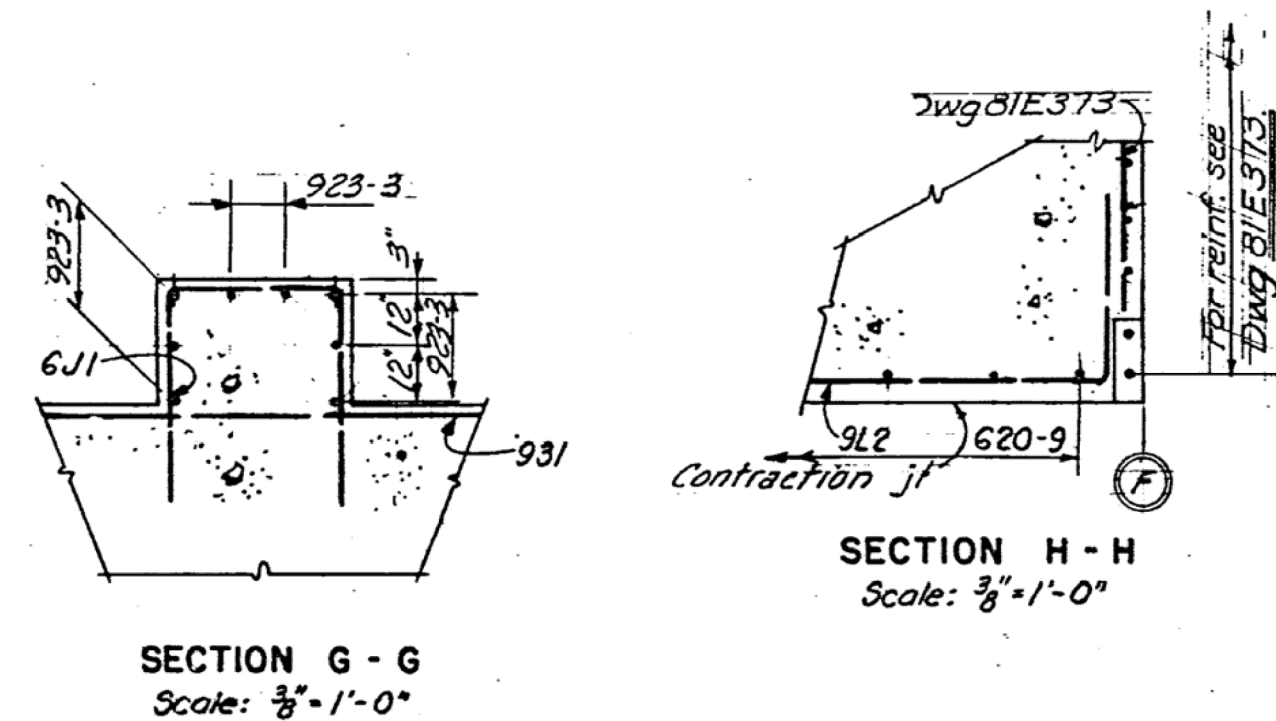
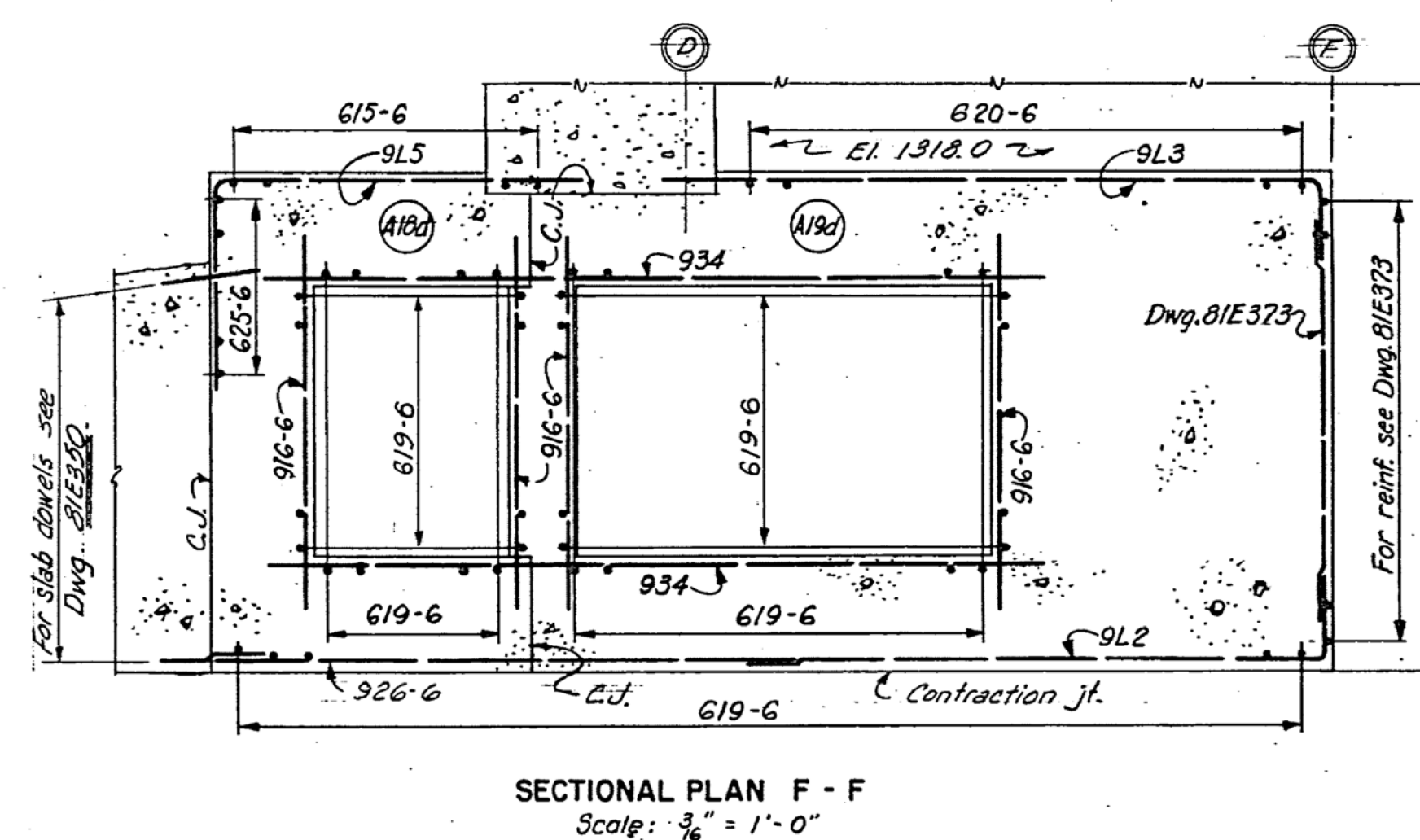
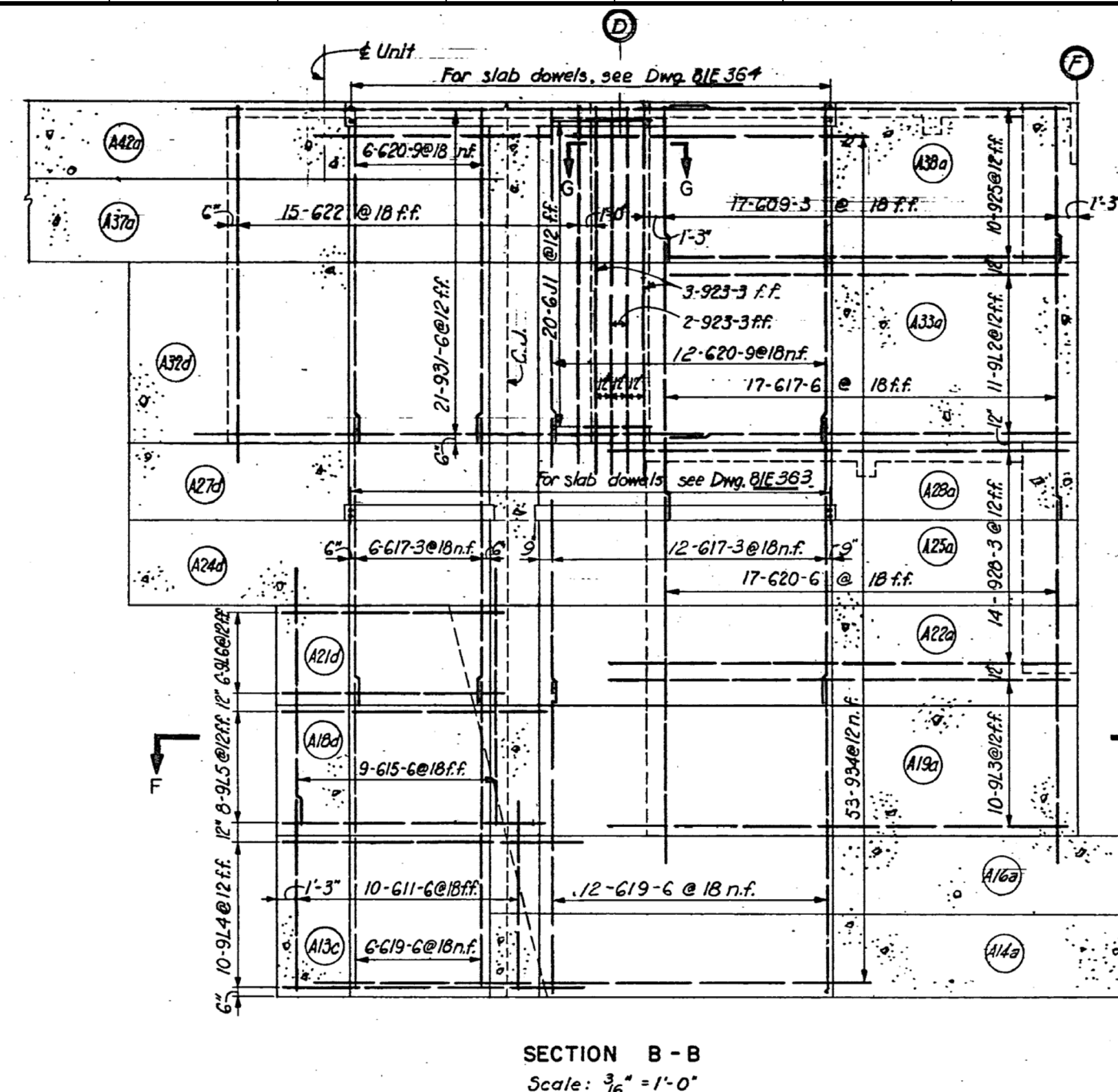








Note: Reinforcement for Section E-E  
same as reinf. for near face  
of Section D-D except as noted.  
Scale  $\frac{3}{16}'' = 1' = 0''$



PAYMENT ITEM  
 (18) Reinforcing steel.

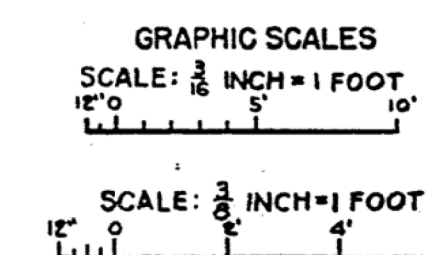
NOTES

1. For Standard Details and General Notes see Dwg. B1E101
2. All bar marks for bars billed on this drawing shall have prefix 372, and are listed on Reinforcement Schedule No. 372.

## EXISTING CONSTRUCTION

INFORMATION SHOWN ON THIS DRAWING DEPICTS  
EXISTING CONSTRUCTION FOR GENERAL REFERENCE,  
EXCEPT FOR LOCATION REFERENCES, SECTION  
CUTS, PHOTO REFERENCE POINTS, AND NOTES  
RELATING TO NEW WORK. ITEMS DEPICTED ON THIS  
SHEET ARE NOT TO SCALE.

THIS DRAWING HAS BEEN REDUCED TO  
ONE HALF THE ORIGINAL SCALE



REVISION	DATE	DESCRIPTION	MADE	APPROVED
SVERDRUP & PARCEL ENGINEERING COMPANY ENGINEERS-ARCHITECTS SAN FRANCISCO, CALIFORNIA			U.S. ARMY ENGINEER DISTRICT, OMAHA CORPS OF ENGINEERS OMAHA, NEBRASKA	
DESIGNED BY:	TF, LFN	MISSOURI RIVER BIG BEND RESERVOIR-POWERHOUSE SUBSTRUCTURE AND INTAKE REINFORCEMENT ASSEMBLY BAY - CENTRAL PORTION SUMP WALLS ABOVE EL. 4308.0		
DRAWN BY:	TF			
TRACED BY:	RDY			
CHECKED BY:	JEL			
SUBMITTED BY:	R. B. Hunsberger			
SVERDRUP & PARCEL ENGRG. CO.		APPROVED: <i>J. E. Erickson</i> DATE: _____ CHIEF, CIVIL DESIGN BR. CHIEF, ENGINEERING DIVISION APPROVED: _____ SCALE: AS SHOWN. SPEC. NO. _____ DRAWING NUMBER		
<i>H. H. Goodhue Jr.</i> MBIO - 81E372				

THIS PLAN ACCOMPANIES CONTRACT NO. DA-25-066-eng.-, MODIFICATION NO.

MBIO - 81E372



**S Army Corps  
Engineers®**

[illegible]

FILENAME:	ANSI D BBA1SI118.dgn	
SIZE:	S. DENNING	
SUBMITTED BY:		
S. DENNING		
CHECKED BY:		
D. MEIER		
CONTRACT NO.:		
W9128F23B0001		
SOLICITATION NO.:		

OMAHA DISTRICT  
1616 CAPITOL AVE  
OMAHA, NE 68102

# STRUCTURAL INFORMATION DRAWING UNWATERING SUMP CONCRETE REINFORCEMENT DETAILS

SHEET ID

SI118