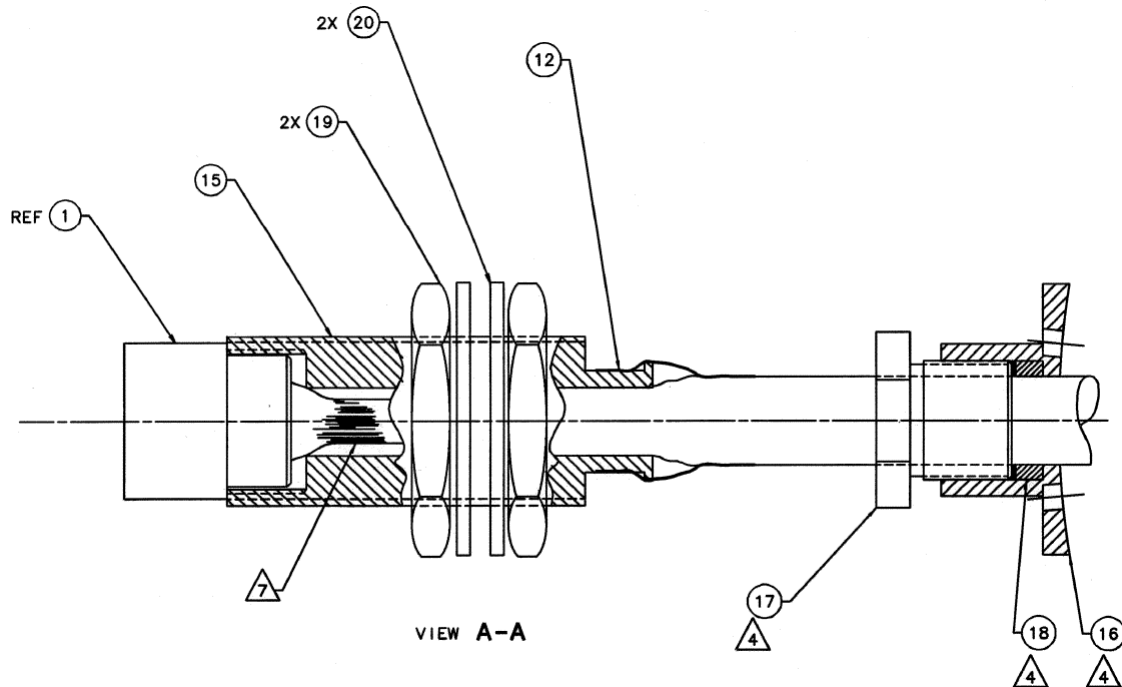


---

## MK70 1W1 Cable Manufactured Parts Statement of Work (SOW)

---

The Statement of Work (SOW) herein is to define the process of acquiring parts and services for new MK70 Machined parts for installation into MK70 Boosters that conform to the provided drawings.



**Figure 1** P1 Connector per 1W1 Cable Drawing 1030-5579

### Background

The 1W1 Cable is used in the MK 70 Booster under specialty purposes. The P1 Connector assembly is required to be manufactured and assembled in accordance with drawing 1030-5579.

- The parts will be manufactured per the drawings in Table 001
- All identifiers will be clear and clean
- All surfaces will be bur free

### Objectives

To purchase new parts that meet the drawing specifications:

- The goal is to purchase new Condition Code A parts
- The completed parts will be assembled into the P1 Connector end.

### Scope

Purchase of new machined parts for the MK70 Booster Project that adhere to the provided drawings and are form, function, and fit to those drawings.

**Tasks**

1. Purchase parts per drawing 1030-5579 in the Table 001 & 002.
  - Each part is to be bagged and labeled IAW Tables 001 & 002 below with the Find Number, DWG or P/N, Title, and Description.

Table of 1W1 Cable Machined Parts per Drawing 1030-5579

F/N	DWG	REV	TITLE	DESCRIPTION
15	1030-2013-001	C	P1 Housing	Connector Lanyard Tube
16	1030-2016-001	-	P1 Adapter	Connector Adapter Plug
17	1030-2120-001	-	P1 Plug	Hold Down Plug
18	1030-2122-001	-	P1 Grommet	Grommet (Made From Rubber Sheet P/N 9455K436)

**Table 001**

Table of 1W1 Cable Machined Parts per Part Number 1030-5579

F/N	Part Number	TITLE	DESCRIPTION
19	NAS1423-20	P1 Housing Nut	Plain Hex Nut 1.25-12 UNF
20	NAS1149C2016R	P1 Housing Washer	Flat Washer 1/14, 2" Round, 0.016" Thick, 1.265 Hole

**Table 002**

- To assemble a complete 1W1 P1 Connector per drawing 1030-5579
- Each line item is to be packaged as to protect the parts from damage.
- The parts may be bagged individually or wrapped and bagged per line item.

---

**Delivery**

Items to be delivered are:

- Quantities per the contract.
- Bagged and/or boxed to protect the parts
- Deliver the completed parts to:
  - [Indian Head Division, Naval Surface Warfare Center \(IHD NSWC\)](#)
  - [4145 Fowler Road, Suite 103](#)
  - [Code E35KW, Building 1900](#)
  - [Indian Head Maryland, 20640-5108](#)
  - [ATTN: Karen Wood](#)
- Each part must pass inspection prior to acceptance and payment.